

O.P.I.



NEW FORMULA

Meet the OPI GelColor Intelli-Gel System™

NEW FORMULA

Self-Corrects.
Stays Put.
Brilliant.



O.P.I.

The New GelColor Intelli-Gel System™

Say goodbye to streaking, flooding, and rework. Our improved formula features Intelli-Gel Technology that self-corrects every stroke, an innovative Intelli-Brush that delivers easier, more precise application, and supercharged pigment and shine for more intense color coverage. It's a stroke of genius.



A Next Level GelColor Service

100+ shades nailed in a vegan* and HEMA-free formula.

*No animal-derived ingredients or by-products.



O.P.I.

NEW FORMULA

MEET THE OPI GELCOLOR INTELLI-GEL™ SYSTEM

Self-Corrects.
Stays Put.
Brilliant.



OPI ICONIC CAP

Smooth cap in iconic shape provides a solid grip for application.

NEW ARTWORK DESIGN

Larger logo improves visibility on shelf.

30% PCR

Amber glass in the iconic 15mL bottle.

PATENT-PENDING STEM DESIGN

Enables better product pickup and control for an easier and more precise application*.

UNIQUE SHOULDER COPY FOR EASY SHADE NAVIGATION

Featuring OPI INTELLI-GEL TECHNOLOGY™, OPI GelColor code, and new opacity icons.



A Next Level GelColor Service

100+ shades nailed in a Vegan* and HEMA-free** formula.

EASIER, MORE PRECISE APPLICATION***

- OPI Intelli-Gel Technology™ + Intelli-Brush™
- Self-corrects every stroke, and stays where you put it for a fast, effortless service.
- Say goodbye to streaking, flooding and rework.
- Patent Pending Intelli-Brush delivers groundbreaking product pick-up, control, and flow.

SUPERCHARGED PIGMENT & SHINE

- Vibrant, stay-true color.
- First coat coverage. True color payoff in two coats.
- Multi-faceted shine
- Easier and faster nail art****: achieve expert-level precision.

DELIGHTING CLIENTS

- 3 weeks of professional wear and shine.
- Vegan*, HEMA-Free**, TPO-Free****
- No color fading, no color shifting.



SELF-CORRECTING

GENIUS PRECISION



OLD COVERAGE

NEW COVERAGE

3 WEEKS OF PROFESSIONAL WEAR



Allows for the perfect product flow due to the higher viscosity formula.

RADICAL FAN BRUSH

Designed to get tight to the cuticle and cover the nail in just one stroke with precision.

* vs. previous OPI GelColor.



	SUPER BASE BASE COAT 15mL	GELCOLOR 15mL	SUPER GLOSS TOP COAT 15mL	SUPER GLOSS NO WIPE TOP COAT 15mL	SUPER MATTE TOP COAT 15mL
Salon cost*	\$18.50*	\$18.50*	\$18.50*	\$18.50*	\$18.50*
Average # of services per pkg	105	92	160	97	137
Cost per application	\$0.18*	\$0.40*	\$0.12*	\$0.19*	\$0.14*

OPI GelColor Intelli-Gel™ System approximate cost per service: \$0.70*

*All pricing is in USD -please update with local pricing outside the United States. Pricing is at the discretion of the retailer/distributor

*No animal-derived ingredients or by-products.
**See opi.com for details.
***vs previous OPI GelColor
****US claim only



OPI Service Essentials



n.a.s. 99 Nail Cleansing Solution

- Cleanses nails and removes any excess oils
- Effectively removes gel residue at the end of a GelColor service



Bond Aid pH Balancing Agent

- A crucial step in proper nail prep
- Balances the pH of the natural nail
- Makes the nail surface slightly more alkaline for optimal adhesion between Nail Lacquer, GelColor, and enhancements applied to the natural nail



Expert Touch

Nail Wipes, Lacquer Remover & Removal Wraps

- Easy-to-use, convenient removal foils with built-in absorbent pads
- Non-drying formula - leaves cuticles soft and supple
- Nail wipes for lint-free cleansing

O.P.I. PRO Salon Service

NAIL PREP BASICS



Nail prep for OPI Salon Services including: OPI GelColor Intelli-Gel™ System, Powder Perfection and Acrylic services.

WHAT YOU'LL NEED

OPI Products:
Expert Touch Lacquer Remover
NAS 99 Nail Cleansing Solution

BondAid
Additional Products:
Nail trimmer

Cuticle pusher
Cuticle removal tool
Cuticle nipper

240-grit nail file
220-grit buffer or 180-grit file
or E-file & bits

THE STEPS

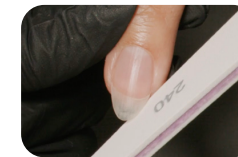
Prep those nails! Every salon service should start with professional quality nail prep, to ensure nails are clean and free of debris and oils. Clean, well-manicured nails will provide your clients with a high-performing OPI nail service that's Insta-worthy!

FRANCHISE	HAND FILE	E-FILE BIT
GelColor	220-grit buffer *Optional	Cuticle prep bit Low speed
Powder Perfection	220-grit buffer	Cuticle prep bit & a fine sanding band or diamond bit Low speed
Absolute	180-grit file	Cuticle prep bit & fine sanding band or diamond bit Low speed
Clarté	180-grit file	Cuticle prep bit & fine sanding band or diamond bit Low speed



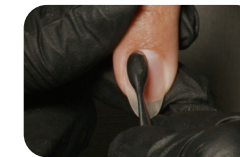
1

Have your client wash and dry their hands thoroughly.



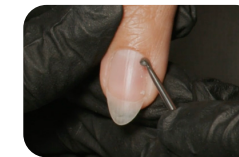
2

Trim nails if needed and shape as desired with a 240-grit nail file.



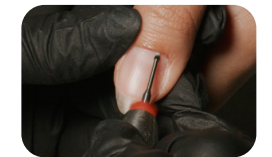
3

Gently glide a cuticle pusher along the nail plate, pushing back the proximal fold and loosening cuticle from the nail plate.



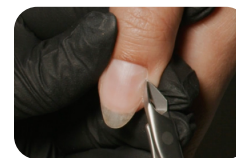
4

Use a cuticle removal tool to remove any remaining cuticle from the nail.



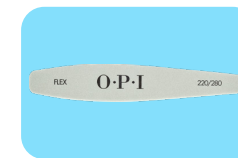
5

If using an e-file use a diamond cuticle prep bit on a low speed, gently guiding the bit around the perimeter of the sidewalls and cuticle line.



6

If necessary, trim away any excess dead skin with a cuticle nipper.



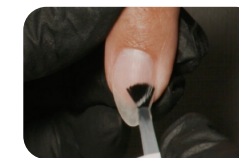
7

Lightly buff the surface of the nail, referencing the grit chart to the above. Focus on the perimeter of the nail around the cuticle line and sidewalls.



8

Scrub the nail with a nail wipe saturated with N.A.S. 99 Cleansing Solution to remove any oil or debris.



9

Apply a coat of BondAid to each nail. Allow to dry.

PRO TIP

Scrub nails well with N.A.S. 99 Cleansing Solution, changing nail wipes every 2-3 nails. Nails should appear slightly matte once cleansed. For clients with oily nail plates or who experience service wear issues cleanse with N.A.S. 99 Cleansing Solution and BondAid pH Balancing agent one hand at a time. (Reference steps 8 and 9)

O.P.I. GelColor Intelli-Gel™ System

SALON APPLICATION GUIDE

It's a stroke of genius that makes your work effortless.
3 Weeks of professional wear.

INTELLI-BRUSH™

SUPERCHARGED PIGMENT

WHAT YOU'LL NEED

OPI Products:
GelColor Super Base Base Coat
GelColor Super Gloss Top Coat

NEW OPI GelColor Shade:
Black Onyx® / Lady in Black

OPI Star Light Gel Lamp
NAS 99 Nail Cleansing Solution
Additional Products:

Nail wipes
ProSpa Nail & Cuticle Oil

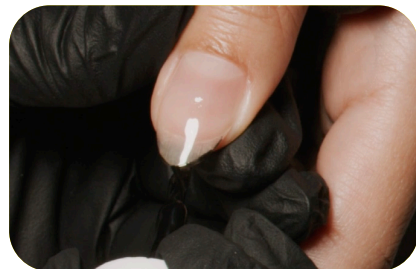
THE STEPS

Shake bottles vigorously for 1 minute to thoroughly blend ingredients. Prep those nails!
Follow OPI Salon Service Prep steps prior to GelColor application.



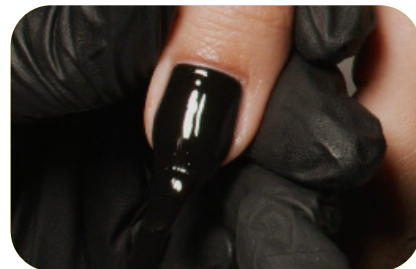
1

Apply a thin coat of Super Base Base Coat to nails. Start by capping the free edge of the nail to seal and apply to the surface of the nail leaving a small free margin around the perimeter of the nail. Cure for 30 seconds in an OPI Star Light Gel Lamp.



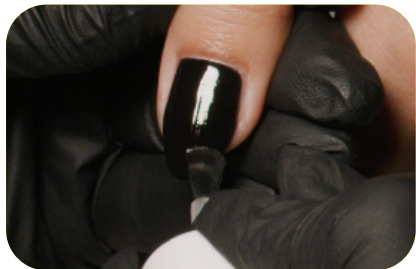
2

Apply a thin coat of color, start by capping the free edge to seal and apply to the surface of the nail leaving a small free margin around the perimeter of the nail. Cure for 30 seconds.



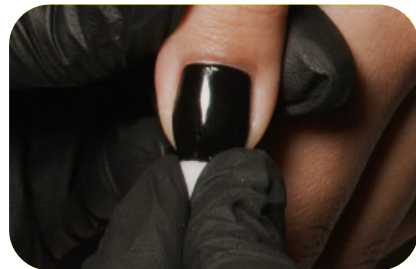
3

Apply a second thin coat of color, start by capping the free edge to seal and apply to the surface of the nail leaving a small free margin around the perimeter of the nail. Cure for 30 seconds.



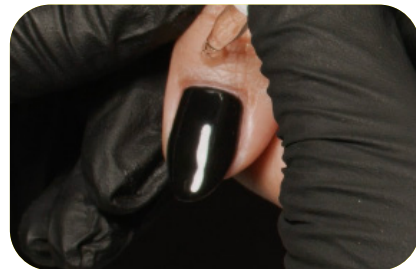
4

Apply a thin coat of Super Gloss Top Coat to nails, start by capping the free edge of the nail to seal and apply to the surface of the nail leaving a small free margin around the perimeter of the nail. Cure for 30 seconds.



5

Cleanse the nails to remove gel residue with a nail wipe saturated with NAS 99 Nail Cleansing Solution.



6

Apply a drop of ProSpa Nail & Cuticle Oil to the base of each nail and massage in.

O.P.I. GelColor Intelli-Gel™ System

PRO FRENCH APPLICATION



WHAT YOU'LL NEED

OPI Products:
GelColor Super Base Base Coat
GelColor Super Gloss Top Coat

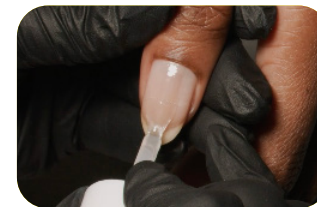
NEW OPI GelColor Shades:
Bare My Soul
Big Apple Red®

Shade Bare My Soul
OPI Star Light Gel Lamp
NAS 99 Nail Cleansing Solution

Additional Products:
Nail wipes
ProSpa Nail & Cuticle Oil
Detail Brush

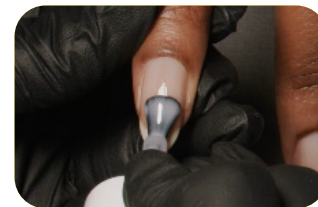
THE STEPS

BEFORE YOU BEGIN: Prep those nails! Follow OPI Salon Service Prep steps prior to GelColor application.
Shake bottles vigorously for 1 minute to thoroughly blend ingredients.



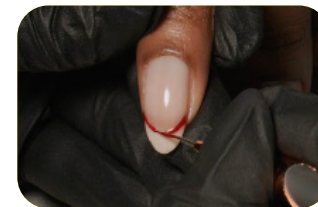
1

Apply a thin coat of Super Base Base Coat to nails. Start by capping the free edge of the nail to seal and apply to the surface of the nail leaving a small free margin around the perimeter of the nail. Cure for 30 seconds in an OPI Star Light Gel Lamp.



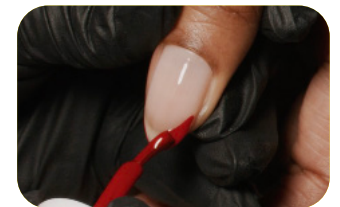
2

Apply a thin coat of Bare My Soul. Start by capping the free edge to seal and apply to the surface of the nail leaving a small free margin around the perimeter of the nail. Cure for 30 seconds. Repeat for coverage.



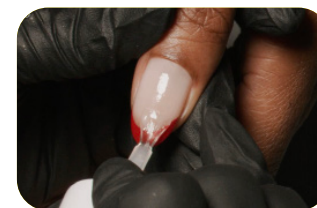
3

OPTIONAL: If desired use a detail brush dipped in Big Apple Red to create your smile line.



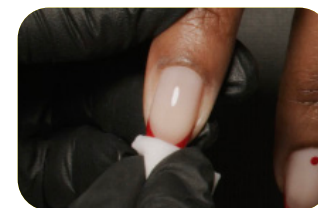
4

Cap the free edge of the nail with Big Apple Red®. Use the precision corner of the Intelli-Brush™ to tuck the color into the corner and create the smile line and fill in the tip of the nail.



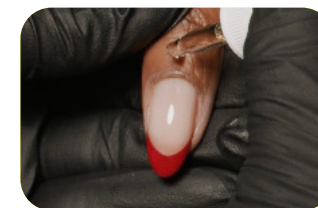
5

Apply a thin coat of Super Gloss Top Coat to nails, start by capping the free edge of the nail to seal and apply to the surface of the nail leaving a small free margin around the perimeter of the nail. Cure for 30 seconds.



6

Cleanse the nails to remove gel residue with a nail wipe saturated with NAS 99 Nail Cleansing Solution.



7

Apply a drop of ProSpa Nail & Cuticle Oil to the base of each nail and massage in.

O.P.I. GelColor Intelli-Gel™ System

PRO APPLICATION OVER ENHANCEMENTS



WHAT YOU'LL NEED

OPI Products:
GelColor Super Base Base Coat
GelColor Super Gloss Top Coat

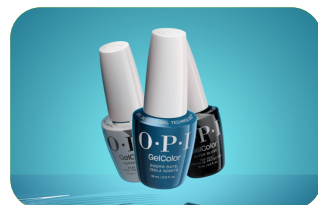
NEW OPI GelColor Shade:
Duomo Days, Isola Nights

OPI Star Light Gel Lamp
N.A.S. 99 Cleansing Solution

Additional Products:
Nail wipes
ProSpa Nail & Cuticle Oil

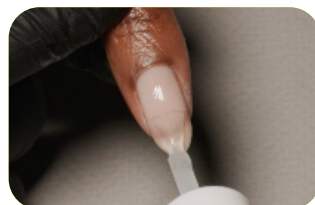
THE STEPS

BEFORE YOU BEGIN: GelColor can be applied directly over the tacky layer of gel, or a finished sculpting gel or acrylic enhancement filed with a 180 grit file.



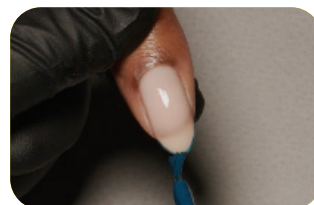
1

Shake bottles for 1 minute to thoroughly blend ingredients.



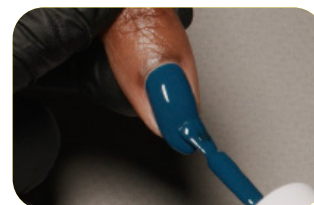
2

Apply a thin coat of Super Base Base Coat to nails, start by capping the free edge of the nail to seal and apply to the surface of the nail leaving a small free margin around the perimeter of the nail. Cure for 30 seconds in an OPI Star Light Gel Lamp.



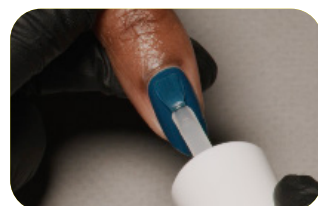
3

Apply a thin coat of color, start by capping the free edge to seal and apply to the surface of the nail leaving a small free margin around the perimeter of the nail. Cure for 30 seconds.



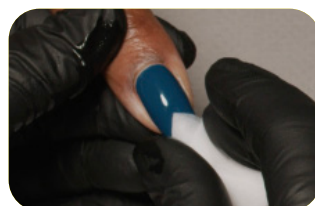
4

Apply a second thin coat of color, start by capping the free edge to seal and apply to the surface of the nail leaving a small free margin around the perimeter of the nail. Cure for 30 seconds.



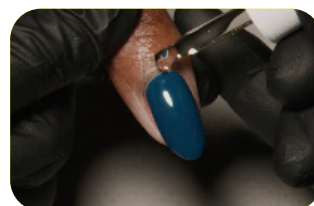
5

Apply a thin coat of Super Gloss Top Coat to nails, start by capping the free edge of the nail to seal and apply to the surface of the nail leaving a small free margin around the perimeter of the nail. Cure for 30 seconds.



6

Cleanse the nails to remove gel residue with a nail wipe saturated with NAS 99 Nail Cleansing Solution.



7

Apply a drop of ProSpa Nail & Cuticle Oil to the base of each nail and massage in.

O.P.I. GelColor Intelli-Gel™ System

PROFESSIONAL GELCOLOR REMOVAL GUIDE



WHAT YOU'LL NEED

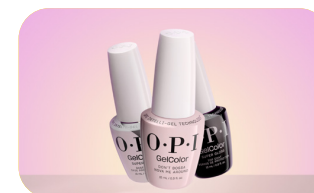
OPI Products:
Expert Touch Lacquer Remover

Expert Touch Removal Wraps
Cuticle Stick

Optional:
240-grit file or E-file and
medium grit bit

ProSpa Nail & Cuticle Oil
Nail wipes

THE STEPS



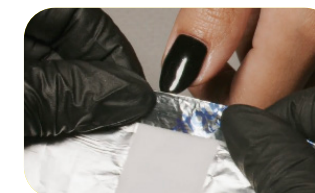
1

OPTIONAL: For dry skin or darker lacquer shades apply a drop of ProSpa Nail & Cuticle Oil to the base of each nail and massage in prior to removal.



2

Fully saturate an Expert Touch Removal Wrap with Expert Touch Lacquer Remover.



3

Fold the edge of the wrap over to reinforce.



4

Place the pad of the wrap against the free edge of the nail.



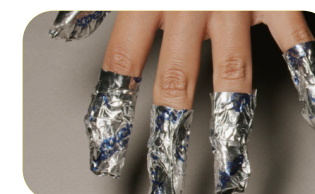
5

Fold the wrap, placing the pad on the surface of the nail.



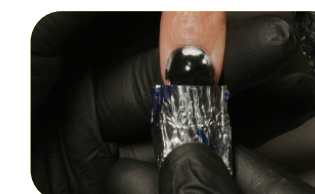
6

Wrap one side of the removal wrap under the finger to ensure the nail is fully encased by the remover pad, followed by the other side and squeeze to tighten. Repeat on remaining fingers.



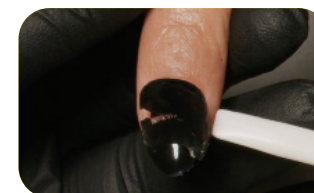
7

Set a timer for 15 minutes.



8

Lightly press and rub the finger tip to help loosen the softened GelColor product inside the wrap, then gently twist back and forth while pulling away from the nail. Remove the wrap.



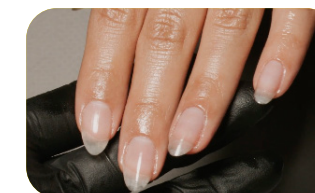
9

Use a cuticle stick to gently flake away any excess pieces of GelColor.



10

Have your client wash and dry hands thoroughly.



11

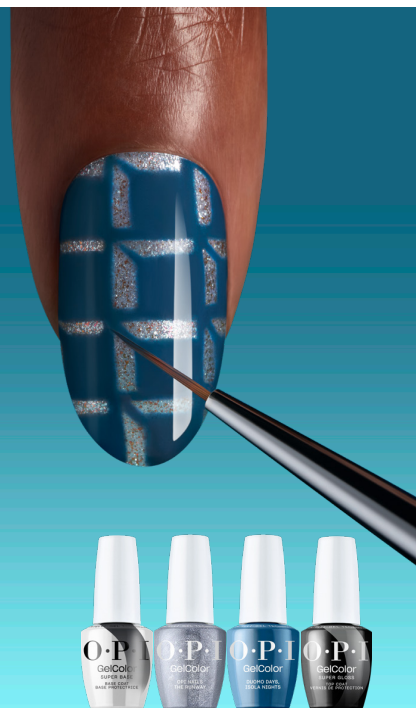
Apply a drop of ProSpa Nail & Cuticle Oil to the base of each nail and massage in.

PRO TIP

If using GelColor No Wipe Top Coat or to speed up your removal, file the free-edge and buff the surface with a 240-grit file or an E-file with a medium grit bit.

O.P.I. ^{NEW} GelColor Intelli-Gel™ System

PRO GelColor Nail Art



Get in Line
Sharp lines check every box.

WHAT YOU'LL NEED

NEW OPI GelColor Super Base Base Coat
NEW OPI GelColor Super Gloss Top Coat
OPI Star Light Gel Lamp

N.A.S. 99 Nail Cleansing Solution

ProSpa Nail & Cuticle Oil
NEW OPI GelColor Shades:
OPI Nails the Runway

Duomo Days, Isola Nights
Nail wipe
Detail brush

THE "NAIL ART" STEPS

BEFORE YOU BEGIN: Prep those nails! Follow our OPI PRO Salon Service Nail Prep Step-by-Steps. Apply a coat of GelColor Super Base Base Coat and cure for 30 seconds in the OPI Star Light Gel Lamp.



1

Apply a thin coat of OPI Nails the Runway to the nail. Cure for 30 seconds in the OPI Star Light. Repeat for coverage.



2

Dip a detail brush in Duomo Days, Isola Nights and create 2 vertical lines from the cuticle to the tip of the nail, dividing the nail into 3 equal parts. Flash cure for 5 seconds.



3

With the detail brush and Duomo Days, Isola Nights create 3-4 evenly spaced horizontal lines from sidewall to sidewall, dividing the nail into 4-5 parts. Flash cure for 5 seconds.



4

Create a smaller square inside the top center grid and fill in. Use the detail brush to connect the corner of the square to the corner of the grid. Flash cure for 5 seconds as needed.



5

Repeat this pattern filling in each section of the grid. Cure for 30 seconds.

THE FINISHING TOUCH

Apply a coat of GelColor Super Gloss Top Coat and cure for 30 seconds. Remove gel residue with a nail wipe saturated with N.A.S. 99 Nail Cleansing Solution. Apply ProSpa Nail & Cuticle Oil to the base of each nail and massage in.

O.P.I. ^{NEW} GelColor Intelli-Gel™ System

PRO GelColor Nail Art



Tip-le Threat
Precise linework that goes round and round.

WHAT YOU'LL NEED

NEW OPI GelColor Super Base Base Coat
NEW OPI GelColor Super Gloss Top Coat
OPI Star Light Gel Lamp

N.A.S. 99 Nail Cleansing Solution
ProSpaNail & Cuticle Oil

NEW OPI GelColor Shades:
Put It In Neutral
Strawberry Margarita
Black Onyx® / Lady in Black

Nail wipe
Detail brush

THE "NAIL ART" STEPS

BEFORE YOU BEGIN: Prep those nails! Follow our OPI PRO Salon Service Nail Prep Step-by-Steps. Apply a coat of GelColor Super Base Base Coat and cure for 30 seconds in the OPI Star Light Gel Lamp.



1

Apply a thin coat of Put It In Neutral to the nail. Cure for 30 seconds in the OPI Star Light. Repeat for coverage.



2

Dip a detail brush in Black Onyx® / Lady in Black and create an arc starting on one side of the nail, arcing up and back down to the opposite side. Thicken the line at the center of the arc tapering thinner at the sides. Flash cure for 5 seconds.



3

Dip a detail brush in Strawberry Margarita and create a smaller arc under the first, thickening the line at the center and tapering down to the sides. Flash cure for 5 seconds.



4

With a detail brush dipped in Black Onyx® / Lady in Black, create a small arc at the tip of the nail widening in the center. Cure for 30 seconds.

THE FINISHING TOUCH

Apply a coat of GelColor Super Gloss Top Coat and cure for 30 seconds. Remove gel residue with a nail wipe saturated with N.A.S. 99 Nail Cleansing Solution. Apply ProSpa Nail & Cuticle Oil to the base of each nail and massage in.

O.P.I.

NEW
GelColor
Intelli-Gel™ System
PRO GelColor Nail Art

Give it a Swirl

Sharp lines paint an optical nail-lusion.



WHAT YOU'LL NEED

NEW OPI GelColor Super Base Base Coat
NEW OPI GelColor Super Gloss Top Coat
OPI Star Light Gel Lamp

N.A.S. 99 Nail Cleansing Solution
ProSpa Nail & Cuticle Oil

NEW OPI GelColor Shades:
Alpine Snow®
Black Onyx® / Lady in Black

Nail wipe
Detail brush

THE "NAIL ART" STEPS

BEFORE YOU BEGIN: Prep those nails! Follow our OPI PRO Salon Service Nail Prep Step-by-Steps. Apply a coat of GelColor Super Base Base Coat and cure for 30 seconds in the OPI Star Light Gel Lamp.



1

Apply a thin coat of Alpine Snow® to the nail. Cure for 30 seconds in the OPI Star Light. Repeat for coverage.



2

Dip a detail brush in Black Onyx® / Lady in Black and create a partial oval shape, thicken the line at the top of the curve as it descends down and off the nail. Flash cure for 5 seconds.



3

With a detail brush and Black Onyx® / Lady in Black, create a second curved line in the center curving away from the first. Thicken the line, tapering thin at the end. Flash cure for 5 seconds.



4

Create additional curved lines moving outward from the larger oval. Thicken the lines consistently to create the optical illusion. Flash cure as needed.



5

Create additional lines radiating up from the smaller oval. Cure for 30 seconds.

THE FINISHING TOUCH

Apply a coat of GelColor Super Gloss Top Coat and cure for 30 seconds. Remove gel residue with a nail wipe saturated with N.A.S. 99 Nail Cleansing Solution. Apply ProSpa Nail & Cuticle Oil to the base of each nail and massage in.

O.P.I.

NEW
GelColor
Intelli-Gel™ System
PRO GelColor Nail Art

Geometrick

Nail sharp lines and statement shapes.



WHAT YOU'LL NEED

NEW OPI GelColor Super Base Base Coat
NEW OPI GelColor Super Gloss Top Coat
OPI Star Light Gel Lamp
N.A.S. 99 Nail Cleansing Solution
ProSpa Nail & Cuticle Oil

NEW OPI GelColor Shades:
Strawberry Margarita
Exotic Birds Do Not Tweet
Duomo Days, Isola Nights

Gelato on My Mind®
Optical Nailusion
Black Onyx® / Lady in Black

Nail wipe
Detail brush

THE "NAIL ART" STEPS

BEFORE YOU BEGIN: Prep those nails! Follow our OPI PRO Salon Service Nail Prep Step-by-Steps. Apply a coat of GelColor Super Base Base Coat and cure for 30 seconds in the OPI Star Light Gel Lamp.



1

Create a geometrical color block in the top right corner with a detail brush using Strawberry Margarita. Flash cure for 5 seconds in the OPI Star Light.



2

Create a geometric shape in the top left corner with a detail brush and Exotic Birds Do Not Tweet. Flash cure for 5 seconds.



3

With a detail brush and Duomo Days, Isola Nights, create a triangle under the first two shades. Flash cure for 5 seconds.



4

Continue creating geometric shapes in alternating shades to include Gelato on My Mind® and Optical Nailusion. Flash cure for 5 seconds as needed and cure for 30 seconds when finished.



5

Using a detail brush, outline each shape with Black Onyx® / Lady in Black. Cure for 30 seconds.

THE FINISHING TOUCH

Apply a coat of GelColor Super Gloss Top Coat and cure for 30 seconds. Remove gel residue with a nail wipe saturated with N.A.S. 99 Nail Cleansing Solution. Apply ProSpa Nail & Cuticle Oil to the base of each nail and massage in.



#OPIGelColor

OPI.COM  @OPI  @OPI_PROFESSIONALS  /OPIPROFESSIONALS

Dist. Wella Operations US LLC, Calabasas, CA 91302 Wella UK Ltd., SW19 4DR, London Wella, 64295 Darmstadt, Germany