



RAMBRIDGE™
growing *with* the future

RAMBRIDGE PRODUCT GUIDE

2019

RAMBRIDGE WHOLESALE SUPPLY

Rambridge Wholesale Supply is an international manufacturer and wholesale distributor of garden and hydroponic supplies.

Founded in 1982, this Canadian owned company leads the market in product innovation and proven performance. Our proprietary lines of nutrients and additives are manufactured in Calgary, and are some of the most well-known and relied upon in the industry.

This includes products such as Blossom Blood, Veg-Booster and Wegener's Liquid.

Our knowledge and experience in the industry allow us to provide our customers with high quality, reputably tested products. "We are a sales and service oriented organization devoted to the growth and development of the gardening industry. As your wholesale distributor we see our goal best met by providing the highest quality products at the best price."

CONNECT WITH US ONLINE!

We want to hear your opinion and feedback on our products! Follow us online for product information and news, special pricing and exciting updates!

Follow us on:

Facebook: RambridgeWholesale

Twitter: @RambridgeGrows

Instagram: @RambridgeGrows



Rambridge Wholesale Supply
Bay 8-8009 57 Street SE
Calgary, AB, Canada T2C 5K7

TOLL FREE ORDER DESK
1-800-265-4769
Telephone Administration:
403-230-5717
Fax: 1-866-852-5475

E-mail: info@rambridge.com
www.rambridge.com



Fertilizers & Additives 4-21

- Blossom Blood
- Veg Booster
- Green Up
- Liquid Black Crystal
- Liquid Gold
- Clearing Solution
- Bumper Crop: Blossom & Veg
- Wegener's Liquid
- Potassium Silicate
- Mr. No!
- Guardian Angel
- B'Cuzz Nutrients
- Greenhouse Seed Company: Powder Feeding
- Gold Label Nutrients
- Terpenez
- BioNova & BioNova Veganics

Growing Substrates 22-25

- Gold Label Substrates
- Quickstart Fiber pellets
- B'Cuzz Roxx stonewool
- Magic moisture crystals
- EazPlug & HGA Propagators

Lighting 26-48

- SolarMAX: Super HPS & MH
- SolarMAX Reflector Series
- Gavita
- UltraGrow
- Lighting Accessories
- Plantmax
- Sunmaster
- NextLight
- Solistek

Environmental 49-59

- Anden
- Agri-Aire
- Fantech
- Mammoth Grow Tents
- TurboKlone
- AirPot
- The Bucket Company
-

Gardening Supplies 60-64

- Chikamasa Gardening Scissors

Hydroponics & Irrigation 65-72

- Tropf Blumat- Drip Irrigation Systems
- Philmac Large Bore Hose Fittings
- Dripline Fittings- Valves, Couplers & Shears

Testing Meters & Solutions- 72-83

- HM Digital Testing Meters
- Bluelab Measurement Systems
- Bumper Up & Down
- CannaMAX Calibration Solutions

Resources 84-95

Terms & Conditions 96-97



Fertilizers & Additives





BLOSSOM BLOOD

The addition of Blossom Blood to your feed schedule during the flowering stage of a plant will promote fuller buds and flowers utilizing selective pH control. Blossom Blood's reputation comes from over 25 years of positive results. Developed for stabilization and floral production in hydroponic applications, Blossom Blood may also be used in soilless growing mediums. Blossom Blood is a specific type of pH buffer salt and is compatible with all quality nutrients.

PRODUCT #	DESCRIPTION
04190300	BLOSSOM BLOOD 20G
04190320	BLOSSOM BLOOD 300G
04190321	BLOSSOM BLOOD 1KG

CASE QUANTITY: 20G 10/CASE; 300G 12/CASE; 1KG 6/CASE



VEG BOOSTER

Enables young cuttings or seedlings to better promote stronger fuller plant growth during the vegetative stage. Add Veg-Booster directly to your reservoir only once at the beginning of a plant's vegetative cycle when the seedling/cuttings have gotten over transplant shock. Works on soil grown plants too.

PRODUCT #	DESCRIPTION
04190310	VEG-BOOSTER 20G
04190312	VEG-BOOSTER 270G

CASE QUANTITY: 20G 10/CASE; 270G 12/CASE





GREEN UP 1-3.5-0

GREEN-UP is designed to reduce yellowing when cuttings are rooting. It has the ability to feed a cutting before the roots have developed. **DO NOT** foliar spray Green-Up directly on cuttings, seedlings or maturing plants. Green-Up is compatible with all quality brand name nutrients. Can be used on mature plants to reduce yellowing on lower leaves in flowering stage.



PRODUCT #	DESCRIPTION
04220091	GREEN UP 1L
04220092	GREEN UP 4L
04220093	GREEN UP 10L
CASE QUANTITY: 1L 12/CASE; 4L 4/CASE; 10L 2/CASE	



LIQUID BLACK CRYSTAL 0 - 0.04 - 0.06

LIQUID BLACK CRYSTAL assists in increasing the ion exchange across the root membrane. It improves the plants ability to absorb nutrients. Liquid Black Crystal must be put into your reservoir or used as a substrate drench. It is most effective when it is applied to the root zone of a plant. **DO NOT** foliar spray with Liquid Black Crystal directly onto leaf tissue.

PRODUCT #	DESCRIPTION
04220095	LIQUID BLACK CRYSTAL 1L
04220096	LIQUID BLACK CRYSTAL 4L
04220105	LIQUID BLACK CRYSTAL 10L
CASE QUANTITY: 1L 12/CASE; 4L 4/CASE; 10L 2/CASE	



LIQUID GOLD 0-0.04-0.06

LIQUID GOLD can be added directly to your reservoir water, or used as a foliar spray. It is compatible with any nutrient. Liquid Gold will increase the cell metabolic rate which translates into better growth. Liquid Gold is absorbed directly into the plant tissue and regular daily spraying will treat new growth cells.

PRODUCT #	DESCRIPTION
04220097	LIQUID GOLD 1L
04220098	LIQUID GOLD 4L
04220099	LIQUID GOLD 10L
CASE QUANTITY: 1L 12/CASE; 4L 4/CASE; 10L 2/CASE	



CLEARING SOLUTION

CLEARING SOLUTION is used to replace the nutrient in the final days before removing a floral crop from your growing system. Clearing Solution induces a stress on the plants system forcing reactions within the plant. **DO NOT** foliar spray Clearing Solution. **DO NOT** mix Clearing Solution with nutrients.

PRODUCT #	DESCRIPTION
04190500	CLEARING SOLUTION 1L
04190501	CLEARING SOLUTION 4L
04190502	CLEARING SOLUTION 10L
CASE QUANTITY: 1L 12/CASE; 4L 4/CASE; 10L 2/CASE	



BUMPER CROP SPECIALTY HYDROPONICS NUTRIENTS: THE FIRST CHOICE FOR HYDROPONIC GROWERS!



Bumper Crop Nutrients are celebrating over 30 years of excellence! These nutrients were the first liquid foods in the market and are recognized for their quality. Rambridge has continued to improve the products' performance.

Bumper Crop Nutrients are an easy to use two part nutrient specifically for vegetative growth and a simple two part specifically for flowering. They contain the natural minerals plants prefer for healthy energetic growth.

BUMPER A&B: THE FOOD FOR VEGETATIVE GROWTH

Designed for feeding vegetative growth and fruit production, Bumper Crop is ideal for starting cuttings or for vegetables (like tomatoes and cucumbers, both which produce fruit and have on-going vegetative growth). High calcium and magnesium levels prevent blossom end rot and improve pollination. Bumper Crop A&B formulation provides the N-P-K micro minerals plus the health minerals magnesium, sulphur and calcium.

PRODUCT #	DESCRIPTION	PRODUCT #	DESCRIPTION
04220041	BUMPER A 0-3-4 1L	04220051	BUMPER B 4-0-3 1L
04220042	BUMPER A 0-3-4 4L	04220052	BUMPER B 4-0-3 4L
04220045	BUMPER A 0-3-4 10L	04220055	BUMPER B 4-0-3 10L
04220043	BUMPER A 0-3-4 20L	04220053	BUMPER B 4-0-3 20L

CASE QUANTITY: 1L 12/CASE; 4L 4/CASE; 10L 2/CASE



BLOSSOM A&B: BUD BURSTING PERFORMANCE!

THE FOOD FOR HEALTHY FLOWERS

This is the formula that earned Bumper Crop its reputation for consistent flower yields crop after crop. It is loaded with the right stuff, in the right combination, without having to add other "nutrient supplements". Blossom A & B is recommended to growers who desire a simple, straight forward nutrient aimed at growing flowers. Blossom A&B are productive nutrient formulations for greenhouse production. To maximize both yields and crop quality it is recommended that you purchase a good nutrient meter to assist in maintaining nutrient levels in your nutrient solution.

PRODUCT #	DESCRIPTION	PRODUCT #	DESCRIPTION
04220061	BLOSSOM A 0-5-4 1L	04220071	BLOSSOM B 3-0-4 1L
04220062	BLOSSOM A 0-5-4 4L	04220072	BLOSSOM B 3-0-4 4L
04220065	BLOSSOM A 0-5-4 10L	04220075	BLOSSOM B 3-0-4 10L
04220063	BLOSSOM A 0-5-4 20L	04220073	BLOSSOM B 3-0-4 20L

CASE QUANTITY: 1L 2/CASE; 4L 4/CASE; 10L 2/CASE





WEGENER'S *Liquid*

Wegener's Liquid provides a balanced NPK (8-6-6) with calcium, magnesium, plus a formulation of trace minerals and elements including plant based extracts from bees wax and select foliage that help plants to absorb and use organic nutrients. Great for your lawn, garden or houseplants. Wegener's Liquid is a concentrate and must be diluted 200 times. One teaspoon (5 ml) to a quart (litre) of water will provide your plants with a healthy organic based diet they'll love.

Use A Little - Grow A Lot: Whether you are a commercial grower or a home gardener, you will find that Wegener's Liquid addresses nutrient imbalances and is ideal for helping plants recover from stress. Wegener's Liquid provides a gentle release of nutrients which will not burn plants.

Environmentally Safe: Wegener's does not easily leach into waterways making it a preferred choice for golf courses, lake front landscaping, around ponds and water gardens.

Commercial Use: Wegener's Liquid provides the complete nutrition required for growing in soilless mediums. This makes it ideal for interior plant maintenance, nursery stock, fruit, vegetables or herbs.

Lawn Management: Use Wegener's Liquid on recreational turf including golf courses, not only as a great fertilizer but as a biological thatch control. When the grass is cut, the cuttings form thatch which is slow in breaking down and decomposing. Apply Wegener's immediately after cutting and thatch breakdown speed up. It has results you'll appreciate.

PRODUCT #	DESCRIPTION
04220406	WEGENER'S LIQUID 500 ML
04220407	WEGENER'S LIQUID 1L
04220408	WEGENER'S LIQUID 4L
04220409	WEGENER'S LIQUID 10L

CASE QUANTITY: 500ML, 12/CASE; 1L, 12/CASE; 4L, 4/CASE; 10L 2/CASE

CannaMax™

POTASSIUM SILICATE

Nutrient Control for Fungus & Molds. Adding Potassium Silicate to your nutrient solution helps prevent the growth of mold and fungus in plants, helps raise the pH of the nutrient and is a source of potassium for your plant. Our Potassium Silicate mix is 16 times more concentrate than any other on the market. A smaller amount is required to get optimized results. Potassium Silicate can increase your plants tolerances of environmental stress, temperature changes, water and soil toxicity. It can also aid in the improved growth rate in the root zone and the foliage.

PRODUCT #	DESCRIPTION
04230050	POTASSIUM SILICATE 500 ML
04230052	POTASSIUM SILICATE 4L

CASE QUANTITY: 500ML, 12/CASE; 4L, 4/CASE



MR. NO!

MR. NO!

Mr. No! is a specially formulated nutrient that increases the number of internodes, shortens the length between them and focuses plants' energy on lateral growth rather than vertical growth. This powerful nutrient will also tighten up buds and maximize your yield.

Proper Use of Mr.No! can result in:

- an increase chlorophyll content of the treated plants
- an increase cell wall thickness thereby can increase the pest and disease resistant
- an increase lateral branching and reduces vertical growth
- an increase flower bud formation and number of female flowers
- an increase biosynthesis of resins thereby increases flavor and aroma of the treated plants
- an increase yield per plant
- an increase fertilizer use efficiency (FEU)
- stimulates synthesis of root exudates
- provide better root development



PRODUCT #	DESCRIPTION
04220036	MR. NO! 250ML
04220035	MR. NO! 1L

CASE QUANTITY: 250ML- 18 PER CASE, 1L -12 PER CASE

Guardian Angel

GUARDIAN ANGEL

Guardian Angel fosters healthy plants that better resist harmful microbial attacks. The product of innovative technology, Guardian Angel utilizes nutrition in the prevention of root disease. Guardian Angel hovers over your whole growing system and promotes a healthy maintenance of your lines, pumps and hydroponic components. Works in soilless mix too!

Guardian Angel is a non living blend of composted fertilizers, root zone soil amendments, inert nutritional salts and natural bacteria derived enzymes. These enzymes aid microbes in producing carbohydrate-binding proteins, the lectins and to enhance macro and micro nutrient availability to the symbiotic beneficial bacteria in the plant root hair zone. The availability of these enzymes and nutrient substrates promote the growth of natural soil microbial communities and best supports the uptake of nutrients required for the plants natural defense activation and growth.



PRODUCT #	DESCRIPTION
09650600	GUARDIAN ANGEL 500ML
09650601	GUARDIAN ANGEL 1L
09650602	GUARDIAN ANGEL 4L

CASE QUANTITY: 500ML, 12/CASE; 1L, 12/CASE; 4L, 4/CASE



B'CUZZ HYDRO NUTRITION

B'Cuzz Hydro Nutrients are entirely tailored to hydroponic substrate. However, experienced growers requiring an aggressive feeding regime in other substrate will experience great results with B'Cuzz Hydro Nutrients.



PRODUCT #	DESCRIPTION	PRODUCT #	DESCRIPTION
04240170	B'CUZZ HYDRO A 946ML	04240174	B'CUZZ HYDRO A 10L
04240171	B'CUZZ HYDRO B 946ML	04240175	B'CUZZ HYDRO B 10L
04240172	B'CUZZ HYDRO A 5L	04240176	B'CUZZ HYDRO A 20L
04240173	B'CUZZ HYDRO B 5L	04240177	B'CUZZ HYDRO B 20L

BOX QUANTITIES: 946 ML-12 PER BOX 3.79L/ 5L- 4 PER BOX 10L- 2 PER BOX 20L- 1 PER BOX

B'CUZZ SOIL NUTRITION

B'Cuzz Nutrients are entirely tailored to soil specific substrate leading to maximum output. B'Cuzz Soil Nutrients ensure biological balance in soil media.



PRODUCT #	DESCRIPTION	PRODUCT #	DESCRIPTION
04240178	B'CUZZ SOIL A 946ML	04240182	B'CUZZ SOIL A 10L
04240179	B'CUZZ SOIL B 946ML	04240183	B'CUZZ SOIL B 10L
04240180	B'CUZZ SOIL A 5L	04240184	B'CUZZ SOIL A 20L
04240181	B'CUZZ SOIL B 5L	04240185	B'CUZZ SOIL B 20L

BOX QUANTITIES: 946 ML-12 PER BOX 3.79L/ 5L- 4 PER BOX 10L- 2 PER BOX 20L- 1 PER BOX

B'CUZZ PK1314

B'Cuzz PK1314 is a high quality flowering preparation with Phosphorous and Potassium. Fast growing plants require Phosphate and Potassium in order to flourish in flowering. B'Cuzz PK1314 will stimulate exuberant floral development rapidly. This formula is fully soluble in water and is especially suited for the flowering phase of the plant. PK1314 ensures firm and dense budding.



PRODUCT #	DESCRIPTION
04240168	B'CUZZ PK 946ML
04240169	B'CUZZ PK 5L

BOX QUANTITIES: 946 ML-12 PER BOX 5L- 4 PER BOX

B'CUZZ ROOT STIMULANT

B'Cuzz Root Stimulator will initiate an explosive root production. The rooting formula will supplement this change. B'Cuzz Root Stimulant solution can be best used when soaking B'Cuzz Roxx Stonewool, in cloning systems and for young plants, cuttings and seedlings.

PRODUCT #	DESCRIPTION	PRODUCT #	DESCRIPTION
09650080	B'CUZZ ROOT 355ML	09650086	B'CUZZ ROOT 3.79L
09650083	B'CUZZ ROOT 946ML	09650089	B'CUZZ ROOT 10L

BOX QUANTITIES: 355ML & 946 ML -12 PER BOX 3.79L/ 5L- 4 PER BOX 10L- 2 PER BOX



B'CUZZ GROWTH STIMULANT

B'Cuzz Growth Stimulator (1.0-0-0.7) has been developed specifically to stimulate the growth phase. It is an all-in-one growing stimulator, containing micro-nutrients, aqua-bacteria's, amino The growth formula will supplement changes from rooting to growth stages.

PRODUCT #	DESCRIPTION	PRODUCT #	DESCRIPTION
09650081	B'CUZZ GROWTH 355ML	09650087	B'CUZZ GROWTH 3.79L
09650084	B'CUZZ GROWTH 946ML	09650093	B'CUZZ GROWTH 10L

BOX QUANTITIES: 355ML & 946 ML-12 PER BOX 3.79L/ 5L- 4 PER BOX 10L- 2 PER BOX



B'CUZZ BLOOM STIMULANT

B'Cuzz Bloom Stimulator (0-0-0.7) encourages flower cell production and increases the manufacture and transport of sugar molecules in the flower development. This will lead to big and dense flowers with great taste.

PRODUCT #	DESCRIPTION	PRODUCT #	DESCRIPTION
09650082	B'CUZZ BLOOM 355ML	09650088	B'CUZZ BLOOM 3.79L
09650085	B'CUZZ BLOOM 946ML	09650094	B'CUZZ BLOOM 10L

BOX QUANTITIES: 355 & 946 ML-12 PER BOX 3.79L/ 5L- 4 PER BOX 10L- 2 PER BOX



B'CUZZ COCO NUTRIENTS

B'Cuzz Coco Nutrients are entirely tailored to coco specific substrate leading to maximum output. B'Cuzz Coco Nutrients ensure biological balance in coco media.

PRODUCT #	DESCRIPTION	PRODUCT #	DESCRIPTION
04240160	B'CUZZ COCO A 946ML	04240162	B'CUZZ COCO A 10L
04240164	B'CUZZ COCO B 946ML	04240166	B'CUZZ COCO B 10L
04240161	B'CUZZ COCO A 5L	04240163	B'CUZZ COCO A 20L
04240165	B'CUZZ COCO B 5L	04240167	B'CUZZ COCO B 20L

BOX QUANTITIES: 946 ML-12 PER BOX 3.79L/ 5L- 4 PER BOX 10L- 2 PER BOX 20L- 1 PER BOX





Welcome to Gold Label. We have been the market leaders in manufacturing substrates in Holland for many years. We are a family run business dating back three generations. Gold Label Special Mix Substrates has a long history of innovation, product improvement and quality certification. Our professional substrates and nutrients are the result of both using the finest materials in the market and listening to the feedback from our customers. We will keep on innovating and developing our products as the market changes to ensure they meet expectations of our worldwide customer base. Commercial growers worldwide recognise Gold Label as the premium quality substrate and nutrient manufacturer the world has to offer.

We guarantee every bag of Gold Label substrate with each batch having been quality checked and sampled before sale. Gold Label is all about quality. A bad substrate can cause a lot of damage. Our quality substrates are not only RHP certified but we are the only peat substrate manufacturer whose peat substrates also have KIWA certification. Horticultural growers trust Gold Label Substrates and Nutrients. That's why professionals prefer our substrates.

GOLD LABEL NUTRIENTS

The philosophy behind Gold Label Nutrients is simple: Use the best possible professional ingredients and make it adaptable to every style of growing. Gold Label Nutrients are specifically developed to work best with Special Mix substrates, but can also be used on other brands' substrates. Our base nutrients are a perfect mix of elements with added chelated Ca (calcium) which makes Gold Label the perfect balanced fertilizer. Perfect pH balanced plant nutrients give superior yields and unprecedented crop quality. We have developed separate lines: Gold Label Soil for peat and compost based substrates. Gold Label Coco for coco substrates. Gold Label Hydro for grows on inert hydroponics substrates such as clay pebbles, rock wool, glass wool, mapito etc. The basis of every line is a two component A/B base nutrient with balanced micro elements, chelated Fe and added Ca. The base nutrients have a different formula: For the hydro nutrients for example, almost all the added micro elements are chelated, enabling them to be effective in a wider pH range and readily available for the plant.

RHP- CERTIFIED FOR HOTRICULTURE

In The Netherlands the RHP foundation is responsible for the certification of substrates for consumer and horticulture. Companies who bear the RHP Horticulture Mark, have to be verified by a certification institute (CI). ECAS is the only CI with accreditation for the RHP quality mark. The requirements of the products are such that they comply with the demands and/or questions from the professional grower. Substrates and substrate components that carry the RHP Quality Mark for Horticulture satisfy the highest chemical and physical requirements, and are low in weeds and free of pathogenic germs. This is all to guarantee a safe and reliable application to the grower. The RHP Quality Mark guarantees quality, stability and crop safety.

www.rhp.nl



KIWA CERTIFICATION

Kiwa is a worldwide operating quality assurance firm that assists organizations in comprehensive certification procedures. Special Mix is the only peat substrate with Kiwa certification. Kiwa does regular inspections of all facilities and samples production material to assure constant high quality.

www.kiwa.nl





Coco A&B

Gold Label Coco is a professional grade mineral two component base plant nutrient for the vegetative and flowering phase on coco substrates. Add A & B in equal quantities, 0.5-3ml/litre or until the desired EC. The chelated micro elements guarantee optimum availability in a wide pH range. Never combine pure nutrients together, always mix in water. Shake bottles before use, store at room temperature. Optimized for Gold Label Coco substrate. Use in combination with Gold Label Roots, Ultra Mg and Ultra PK for optimum results.

GOLD LABEL HYDRO

Gold Label Hydro is a professional grade mineral two component base plant nutrient for the vegetative and flowering phase on hydro substrates such as expanded clay pebbles (Gold Label RHP Hydrocorn) and rockwool. Add A & B in equal quantities, 0.5-3ml/litre or until the desired EC. The chelated micro elements guarantee optimum availability in a wide pH range. Never combine pure nutrients together, always mix in water. Shake bottles before use, store at room temperature. Use in combination with Gold Label Roots, Ultra Mg and Ultra PK for optimum results.

SOIL A&B

Gold Label Soil A & B is a professional grade mineral two component base plant nutrient for the vegetative and flowering phase on peat and compost substrates. Add Soil A & B in equal quantities, 0.5-2ml/litre or until the desired EC. Never combine pure nutrients together, always mix in water. Shake bottles before use, store at room temperature. Use in combination with Gold Label Roots, Ultra Mg and Ultra PK for optimum results.

PRODUCT #	DESCRIPTION
04240361	GL COCO A 1L
04240373	GL COCO B 1L
04240385	GL COCO A 4L
04240374	GL COCO B 4L
04240363	GL COCO A 10L
04240375	GL COCO B 10L
04240364	GL COCO A 20L
04240376	GL COCO B 20L

BOX QUANTITIES: 1L - 12 PER BOX
4L - 4 PER BOX
10L/20L - 1 PER BOX

PRODUCT #	DESCRIPTION
04240369	GL HYDRO A 1L
04240386	GL HYDRO B 1L
04240381	GL HYDRO A 4L
04240382	GL HYDRO B 4L
04240371	GL HYDRO A 10L
04240383	GL HYDRO B 10L
04240372	GL HYDRO A 20L
04240384	GL HYDRO B 20L

BOX QUANTITIES: 1L - 12 PER BOX
4L - 4 PER BOX
10L/20L - 1 PER BOX

PRODUCT #	DESCRIPTION
04240365	GL SOIL A 1L
04240377	GL SOIL B 1L
04240389	GL SOIL A 4L
04240378	GL SOIL B 4L
04240367	GL SOIL A 10L
04240379	GL SOIL B 10L
04240368	GL SOIL A 20L
04240380	GL SOIL B 20L

BOX QUANTITIES: 1L - 12 PER BOX
4L - 4 PER BOX
10L/20L - 1 PER BOX





ULTRA PH-

Gold Label Ultra pH- is a universal acid for adjusting the pH levels of nutrient solutions. It contains a balanced mix of phosphoric acid, nitric acid and sulphuric acid. Add last to your nutrients solution, reduce pH carefully in small steps and stir well before measuring. Use Ultra pH- in the vegetative and flowering period.

PRODUCT #	DESCRIPTION
09650066	GOLD LABEL Ultra pH- 1L
09650067	GOLD LABEL Ultra pH- 4L

BOX QUANTITIES: 500/ 1L - 12 PER BOX 4L - 4 PER BOX

ULTRA MG

Gold Label Ultra MG is a nitrogen/magnesium additive for all plant development stages. Ultra MG has been specifically developed to perfectly balance your NPK and micro elements in all stages of vegetative and generative development. It contains high quality magnesium chelate which is easily absorbed by your crop in a wide pH range. Use continuously on inert media and as a replenishment on peat and compost media.

PRODUCT #	DESCRIPTION
09650055	GOLD LABEL Ultra MG 500ML
09650056	GOLD LABEL Ultra MG 1L
09650058	GOLD LABEL Ultra MG 4L

BOX QUANTITIES: 500/ 1L - 12 PER BOX 4L - 4 PER BOX

ULTRA PK

Gold Label Ultra PK is a flowering additive based on advanced polyphosphates and chelated trace elements. Ultra PK has been specifically developed to perfectly balance your NPK and micro elements in all stages of vegetative and generative development. The Ultra PK formula prevents phosphorus from depositing at pH levels >6.2, promotes availability of Ca, Mg and trace elements and keeps your drip lines clean.

PRODUCT #	DESCRIPTION
09650050	GOLD LABEL Ultra PK 500ML
09650051	GOLD LABEL Ultra PK 1L
09650053	GOLD LABEL Ultra PK 4L

BOX QUANTITIES: 500/ 1L - 12 PER BOX 4L - 4 PER BOX

ROOTS

Gold Label Roots is a highly concentrated root and growth stimulator with biological extracts of kelp, humic acids and high quality amino acids. We incorporate EDDHMA chelated Fe which is the most stable Fe available on the market. Use Gold Label Roots for seedlings and cuttings through the vegetative phase of growth. Add 0.5ml/litre continuously from first watering to 3rd week of flowering.

PRODUCT #	DESCRIPTION
09650075	GOLD LABEL ROOTS 250ML
09650076	GOLD LABEL ROOTS 1L

BOX QUANTITIES: ALL SIZES - 12



TERPENEZ 0-0-0 ESSENTIAL OIL INTENSIFIER

Terpenez represents a new class of horticultural products aimed at enhancing the aromatic experience associated with gardening. Many of the plants chosen for cultivation are selected based upon the value of their essential oils. With that knowledge, Terpenez has been purposefully formulated from all organic botanical extracts and is designed to assist the plant with processes associated with oil and resin production.

Terpenez is blended in house in California USA and is made from the finest botanical inputs currently available. Versatile in its application, Terpenez is recommended to be applied during flush as part of your standard 11-14 day flush regimen but can be applied at a diluted rate throughout your flowering cycle for advanced results. Terpenez can also be used exclusively during the flush cycle to aid in the removal of residual nutrient salts and enhance the scent profile of your garden. Bottom line: it's an organic terpene enhancer. Boosts terpenoid profiles & increases overall aromatic effect. Terpenez alternatively uses bio-identical organic steam distilled plant extracts that the target plant identifies as its own. No undue stress, no heavy metals and no salts just extracts and an organic wetting agent.



PRODUCT #	DESCRIPTION
04220501	TERPENEZ 500 ML
04220502	TERPENEZ 1L
04220503	TERPENEZ 4L
04220504	TERPENEZ 10L



TERPENEZ
ESSENTIAL OIL INTENSIFIER

0 - 0 - 0

Terpenez represents a new class of horticultural products aimed at enhancing the aromatic experience associated with gardening. Many of the plants chosen for cultivation are selected based upon the value of their essential oils. With that knowledge, Terpenez has been purposefully formulated from all organic botanical extracts and is designed to assist the plant with processes associated with oil and resin production.

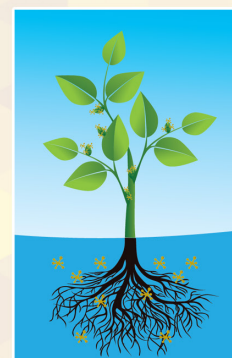
Terpenez is blended in house in California USA and is made from the finest botanical inputs currently available. Versatile in its application, Terpenez is recommended to be applied during flush as part of your standard 11-14 day flush regimen but can be applied at a diluted rate throughout your flowering cycle for advanced results.

As with all gardening products, results are variable and dependent upon a variety of conditions however the vast majority of users have experienced very favorable results that were not only more intense than they expected but far more pervasive than anyone could have hoped. If your goal is an overall increase in the intensity of the natural bouquet of your garden, Terpenez may be the answer.



HOW DOES IT WORK?

Terpenez has been carefully formulated to provide essential oil bearing plants with both precursors (ex. metabolic building blocks, trace elements etc.) as well as readily available bio-identical organic plant compounds with the objectives of increased overall essential oil production and intensity. Precursors provide support to the pathways, essential for oil production, while bio-identical plant compounds augment in-situ concentrations through contact assimilation.



WHY 0 - 0 - 0?

Terpenez was purposefully formulated as 0 - 0 - 0 from certified organic inputs ensuring it won't conflict with your existing schedule or contaminate your crop. Commercial Grade.

GROWSOLUTIONS.COM



BIO NOVA PREMIUM FERTILIZERS

You decide which way to grow!

BASIC WAY

Yes, it really is that easy with just two products. Use Coco Forte A + B in the same quantities on coconut fibres.

OR WITH THE SUPERMIXES:

Soil-SuperMix on potting compost or in open soil.



PRODUCT #	DESCRIPTION
04246000	BIONOVA SOIL SUPERMIX 1L
04246001	BIONOVA SOIL SUPERMIX 5L
04246002	BIONOVA SOIL SUPERMIX 20L

PRODUCT #	DESCRIPTION
04246003	BIONOVA COCO FORTE 1L A&B SET
04246004	BIONOVA COCO FORTE 5L A&B SET
04246005	BIONOVA COCO FORTE 20L A&B SET

DEDICATED WAY

Add up to 4 products to the basic way. Add a choice of the following products or all four to the basic way in order to further stimulate development of the crop.

Use PK 13-14 in combination with SuperMixes from the start to the end of the flowering period.

TML, The Missing Link for optimum health and a quick-acting immune system. Iron ammonium citrate in a base of colloidal minerals of vegetable origin.

BN X-cel is the number 1 hormone-free plant improver on a base of fermented algae and animal proteins. The best of land and sea. The combination of these products significantly increases the development and flowering period for every plant. A higher and better yield is therefore possible. Managing the crop with these special products also provides plant-based insights and this can lead to improved results.



PRODUCT #	DESCRIPTION
04246006	BIONOVA PK 13-14 1L
04246007	BIONOVA PK 13-14 5L
04246008	BIONOVA PK 13-14 20L

PRODUCT #	DESCRIPTION
09651002	BIONOVA X-CEL 1L GROW/BLOOM
09651003	BIONOVA X-CEL 5L GROW/BLOOM
09651004	BIONOVA X-CEL 20L GROW/BLOOM
09651005	BIONOVA TML 250ML
09651006	BIONOVA TML 1L
09651007	BIONOVA TML 5L
09651008	BIONOVA TML 20L



BN Roots when planting out or transplanting for optimum root protection, development and stress-resistance in a vegetable base of algae and other important building blocks. BN-Zym for breaking down plant waste products and converting them into absorbable elements.

PRODUCT #	DESCRIPTION	PRODUCT #	DESCRIPTION
09651009	BIONOVA ROOTS 250ML	09651011	BIONOVA ROOTS 5L
09651010	BIONOVA ROOTS 1L	09651012	BIONOVA ROOTS 20L

BN-Zym is a natural bio-catalyst (process accelerator), medium builder and medium improver based on specific enzymes. While BN-Zym penetrates into the medium, it also brings more oxygen into it! BN-Zym brings about an increased bacteria activity, which convert the nutrients and minerals in the soil into material that is directly absorbable by the crop. BN-Zym catalyses the waste matters and delivers them back to the crop in the form of absorbable nutrients.

PRODUCT #	DESCRIPTION	PRODUCT #	DESCRIPTION
09651013	BIONOVA ZYM 250ML	09651015	BIONOVA ZYM 5L
09651014	BIONOVA ZYM 1L	09651016	BIONOVA ZYM 20L

NovaFoliar is a powerful and highly effective cleaner against pollution of the leaf surface and clogging of the leaf pores (stomata) by waste from pests. This leaf detergent cleans the crop of all organic pollution with the result that the crop is no longer attractive to all kinds of insects and fungi.

PRODUCT #	DESCRIPTION	PRODUCT #	DESCRIPTION
09651017	BIONOVA FOLIAR 250ML 1:4	09651019	BIONOVA FOLIAR 5L 1:4
09651018	BIONOVA FOLIAR 1L 1:4	09651020	BIONOVA FOLIAR 20L 1:4

Silution consists of a stabilized and bioavailable form of silicic acid. It is a highly plant-available and bio-active product that has positive effects on the plant. Silution results in a better harvest: higher yield and a better quality. The effectiveness of silicic acid in strengthening the plant and stimulating growth and flowering is particularly visible with growers that have less optimal growing conditions such as in greenhouses, indoor crops, growing in warm climates and high infection risk conditions. Silution should be given right from the start of the growing period for the plant's rooting system to grow bigger. Bigger roots take up more nutrients, which in turn allows the plant to grow better, faster and stronger and helps the plant to resist external influences and diseases.

PRODUCT #	DESCRIPTION	PRODUCT #	DESCRIPTION
09651000	BIONOVA SILUTION 250ML	09651001	BIONOVA SILUTION 1L

BIO NOVA PREMIUM COCOSUBSTRATE

This is a mixture of 50% coco fibres, 25% peat mould and 25% peat moss. This mixture combines the buffer capacity of a pottingsoil with the capillary action of coco fibres. The best of both worlds!

BIO NOVA PREMIUM COCO

This is 100% coco fibres

PRODUCT #	DESCRIPTION
08632000	BIONOVA COCOSUBSTRATE 40L BAG
08632001	BIONOVA COCO ONLY 40L BAG



BIONOVA VEGANICS- VEGAN AND ORGANIC NUTRIENTS

The purest nutrient for a clean and pure yield.



“In 2018 Bio Nova has been in business for 25 years. A very important milestone to all of us!

We take this moment to set a new benchmark and introduce “Bio Nova Veganics”. It is the best product we have ever made. Veganics is all our experience, passion and knowhow, combined and translated in a complete new line up. We are very proud to share this knowledge with you and introduce the first two products now: Veganics GROW and Veganics BLOOM. With Veganics nutrients we take organic growing to the next level.

We have captured the natural power of the building blocks of all life, marine phytoplankton, and have created a unique and pure blend. The purest nutrient for a clean and pure yield.”

Best regards, Eric van Vlimmeren, founder



VEGANICS

All Veganics-products:

- 100% vegan
- Contain plant based raw materials only
- Enriched with primordial sea minerals
- Mixed with pure low saline seawater



Grow Schedule Bio Nova Veganics

All amounts are in ml per 10 L	Growth period	Start Flowering			Mid Flowering			End Flowering		last week/ Flush
Veganic Grow Vegan Main Nutrient	30	30	25	25	20	18	15	5	-	-
Veganic Bloom Vegan Main Nutrient	13	25	30	40	45	45	45	35	20	-
PK 13-14 Mineral Flowering Booster	-	1,5	2,5	4	6,5	9	10	7,5	5	-
BN Roots Organic Root Stimulator	once 100 ml./ 10 L	-	-	-	once 100 ml./ 10 L	-	-	-	-	-
X-cel Organic Growing- and Flowering Booster	5	5	5	5	10	10	10	10	7,5	-
The Missing Link Organic Growing- and Flowering Booster	5	5	5	5	5	5	5	5	5	-
BN-Zym Organic Substrate amplifier	2,5	2,5	2,5	2,5	2,5	2,5	2,5	2,5	2,5	-
Silution Mineral Plant Strengtheners	2,5	2,5	2,5	2,5	2,5	2,5	2,5	2,5	2,5	-

Usefull Tips of Veganics Grow Schedule

- First add water to the feed vessel, then add the main nutrients and stir well.
 - In areas of soft water it is recommended to add Ca 15 to the main nutrients.
 - Leave the mix for one hour and then adjust the pH value to pH 5.8 if necessary.
 - The dosage of the main nutrient can be adjusted in steps of $\pm 10\%$.
 - Do not use nutrients in the last week before harvest.
 - Use BN Roots when planting and repeat after 30 days. In periods of high stress in the plants we recommend using BN Roots every week.
- Dosage may be adjusted at your discretion.



VEGANICS GROW 3-2-4

Veganics GROW is a 100% organic liquid nutrient and is particularly recommended for sustainable agriculture and organic farming. Veganics GROW is formulated to be used during the entire growing season.

- Product is directly bio-available for the roots
- Naturally build-in root stimulator
- Small cuttings and seedlings will gain strength from the first application
- Steady growth with small internodes
- Increases the number of secondary branches
- Stimulates the forming of flowers
- 100% vegan

Veganics GROW is available in 1L bottle, 5L, 20L and 200L cans.

PRODUCT #	DESCRIPTION
04246018	BIONOVA VEGANIC GROW 1L 3-2-4
04246019	BIONOVA VEGANIC GROW 5L 3-2-4
04246020	BIONOVA VEGANIC GROW 20L

VEGANICS BLOOM 2-2-5

Veganics BLOOM is a 100% organic liquid nutrient and is particularly recommended for sustainable agriculture and organic farming. Veganics BLOOM is formulated to be used during the budding or flowering stage

- Clean and pure big yields.
- Terpenes of the highest possible grade
- No rest or waste material/nutrients in the crop
- Intense fine smell
- Very cost effective
- Free of heavy metals
- 100% vegan
- Cleanest nutrient in the world
- Two steps further then normal organics
- Certified quality

Veganics BLOOM is available in 1L bottle, 5L, 20L and 200L cans.

PRODUCT #	DESCRIPTION
04246021	BIONOVA VEGANIC BLOOM 1L 2-2-5
04246022	BIONOVA VEGANIC BLOOM 5L 2-2-5
04246023	BIONOVA VEGANIC BLOOM 20L 2-2-5



Growing Substrates



Coco

Gold Label Coco is the best buffered coco in the market with a very low EC. This not only guarantees a clean and buffered substrate, but also a production process with respect for the environment. Gold Label Coco is an ideal hydroponics substrate: It's an organic rest material and a renewable resource, light and airy, can hold 8-10 times its weight in water, has a high capillary action, a stable pH and can be reused or recycled in the compost bin.

PRODUCT #	DESCRIPTION
08630110	GOLD LABEL COCO 50L

70 PER PALLET

HYDROCORN

Gold Label Hydro Clay Pebbles are manufactured using a mix of the best quality pure clay and are baked in an open furnace using high grade clean fuels. This guarantees absence of heavy metals or other contaminates. Gold Label Hydro carries the RHP for Horticulture quality certificate. Gold Label Hydrocorn is the inert hydroponics substrate of choice for professionals. The 16-25 mm size provides stability and the unique uneven shape of the pebble is an ideal surface for roots and beneficial bacteria. The porous structure has a high water capacity and is suitable for both ebb/flood and top irrigation systems.

PRODUCT #	DESCRIPTION
08630112	GOLD LABEL HYDROCORN 8-16 MM 50L
08630113	GOLD LABEL HYDROCORN 16-25 MM 50L

65 PER PALLET

60/40 (60% HYDROCORN / 40% COCO)

Gold Label 60/40 is 60% Hydrocorn and 40% Coco. It is an ideal match for high water capacity, lower watering frequency and better rooting. We utilize the 16-25mm Hydrocorn from Gold Label and the purest Gold Label Coco to give you the perfect ebb and flood growing substrate that also works well in any pot based systems. The 60/40 mix allows you to feed less frequently than in straight Hydrocorn. This gives you a buffer on the watering times but still allows you to feed regularly without over watering.

PRODUCT #	DESCRIPTION
08630114	GOLD LABEL HYDRO/COCO 60/40 MIX 50L

60 PER PALLET

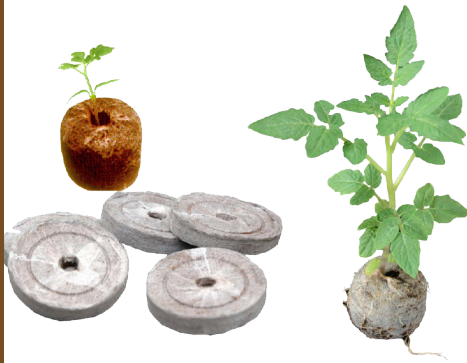
80/20 (80% HYDROCORN / 20% COCO)

Gold Label Hydrocorn and Coco is an ideal match for high water capacity, lower watering frequency and better rooting. We utilize the 8-16mm Hydrocorn from Gold Label and the purest Gold Label Coco to give you the perfect ebb and flood growing substrate that also works well in any pot based systems. The 80/20 mix allows you to feed less frequently than in straight Hydrocorn but more frequently than 60/40. This gives you a buffer on the watering times but still allows you to feed regularly without over watering.

PRODUCT #	DESCRIPTION
08630111	GOLD LABEL HYDRO/COCO 80/20 50L

60 PER PALLET





QUICKSTART-FIBER PELLETS

Planter's Pride is conscious of today's environmental concerns and is actively developing new and exciting eco-friendly growing mediums. The new line of fiber-based pellets is designed to offer you all the benefits of peat pellets without contributing to the destruction of our environmentally important peat bogs

B'CUZZ ROXX STONEWOOL

B'Cuzz Roxx is one of the first to match the high standards of the competition. Commercial Agriculture would demand no less. There is no doubt that B'Cuzz Roxx stonewool stands among the best stonewool brands on the market today. B'Cuzz Roxx is a rockwool alternative for the serious grower. B'Cuzz Roxx propagating plugs are effective means of starting seeds or producing healthy cuttings. B'Cuzz Roxx Stonewool incorporates a complex weave pattern to allow the natural growth of roots. All sleeves of B'Cuzz Roxx stonewool are plastic wrapped. B'Cuzz Roxx offers competitive pricing and is the first to incorporate the stealth box feature. Each box is packed in a generic brown box sleeve. Discover the only other option for top quality stonewool in North America!

MAGIC MOISTURE CRYSTAL

Magic Moisture Crystals act like miniature water bottles that can be filled over and over again. They store up to 400 times their weight in water and then they gently release that water back to the plant as needed.

Easier Plant Care

- Absorbs up to 400 times its weight in water
- Acts like miniature water bottles
- Reduces the need to water your garden
- More productive veggie gardens
- Works year after year, plants thrive on them
- Nontoxic
- Use to reduce demand of water wells
- Use with new sod or seeding of lawns
- Use where there is water rationing

PRODUCT #	DESCRIPTION	PRODUCT #	DESCRIPTION	PRODUCT #	DESCRIPTION
08630129	FIBER PELLETS (42MM)	08590104	SQUARE PLUG SHEETS 98/SHEET 30 SHEETS/CS	08620010	MAGIC MOISTURE CRYSTALS 50G
		08590105	ROXX 6x6x5.8 (Box 48)	08620040	MAGIC MOISTURE CRYSTALS 2-4MM/ KG
				08620041	MAGIC MOISTURE CRYSTALS 1-2MM/ KG



Eazy Plug & Eazy Block

Eazy Plug & Eazy Block are made of organic materials which are bonded and formed into an extensive product line of plugs and blocks for the professional horticulture and can be used for the production of a wide range of crops.

HGA Garden manufactures this breakthrough, natural and sustainable growth solution for growing all of your plants. Our products are carefully balanced and have a predetermined pH, EC value and a fixed air- to - water ratio. Because of this, growing conditions are always optimal and a very fast and powerful rooting or germination is ensured.

The Eazy Plug and Block are supplied dried, making them clean and lightweight, with limitless shelf life and no risk of molds. The dry Eazy Plug & Eazy Block take water back up very easily and quickly, retaining all of their former characteristics.

PRODUCT #	DESCRIPTION
08631000	Eazy Plug CT24
08631004	Eazy Plug CT66 (10x20)
08631001	Eazy Plug CT77
08631002	Eazy Block Case 160
08631003	Eazy Pyramid
08631005	Eazy Pyramid Mini
05271000	HGA PROP 64 KIT
05271001	HGA TRAY 64- TRAY ONLY
05271002	HGA COVER 64- DOME ONLY
05271003	HGA PROP 43 KIT
05271004	HGA TRAY 43- TRAY ONLY
05271005	HGA COVER 43- DOME ONLY
05271006	HGA PROP 64 50D, 50W HEATER- TEMP CONTROL
05271007	HGA PPROP 43 INSULATED 11WATT HEATER



Nature's Choice



Lighting



SOLARMAX SUPER HPS

Super HPS - 2100 K - FLOWERING

As plants approach maturity they require less "Blue Light" and depend more upon radiation from the "Red" portion of the spectrum between 610 nm - 720 nm.

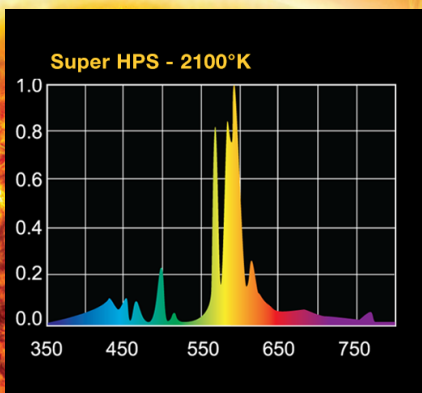
SOLARMAX HPS lamps have been engineered to constantly deliver 10% more targeted "Red Light" energy to the maturing plant to promote aggressive flowering.

Available in 400, 600, 1000W

PRODUCT #	DESCRIPTION
07450736	SOLARMAX HPS 400W SUPER
07450737	SOLARMAX HPS 600W SUPER

12 PER BOX

SOLARMAX



SOLARMAX SUPER MH

Vegetative - 7200 K- VEGETATIVE and VEG CONVERSION

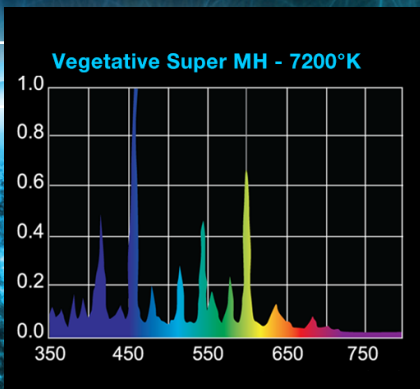
SOLARMAX lamps deliver 30% more "nutritious" Blue light radiation than standard lamps. The result - more vigorous vegetative growth and stronger roots during the important early stages of a plant's development.

Available in 400, 600, 1000W MH & Veg-Conversion

PRODUCT #	DESCRIPTION
07450807	SOLARMAX MHT 400W VEG-CONVERSION
07450738	SOLARMAX MHT 600W VEG-CONVERSION
07450758	SOLARMAX MHT 1000W VEG-CONVERSION
07450806	SOLARMAX MHT 400W VEG LAMP
07450757	SOLARMAX MHT 1000W VEG LAMP

12 PER BOX

SOLARMAX



SOLARMAX

Reflector Series



SOLARMAX REFLECTOR SERIES

SUPER HPS 95% efficient. Amazing uniformity in light spread with 10% more light on the plant canopy. Reduce greenhouse shadowing and no shades/reflectors to assemble. Available in high output 400W (58,000 lumens) or 600W (95,000 lumens) HPS. Smaller than a 400 BT37 lamp. Available in high output 400W (58,000 lumens) or 600W (95,000 lumens) HPS.

VEG. LAMPS Operates on standard 400W or 600W HPS ballast. 95% efficient with amazing light uniformity. More vigorous vegetative growth and stronger roots.

Adjustable lamp base for perfect alignment. Available in high output 400W (32,000 lumens) or 600W (55,000 lumens) MH 7200°K.

PRODUCT #	DESCRIPTION
07450800	SOLARMAX 400W HPS REFLECTOR SERIES
07450801	SOLARMAX 600W HPS REFLECTOR SERIES
07450802	SOLARMAX MHT/R 400W REFLECTOR SERIES
07450803	SOLARMAX MHT/R 600W REFLECTOR SERIES

15 PER BOX



WHY GAVITA?



Gavita is the oldest specialised horticultural lighting company. Gavita builds on 30 years of accumulated knowledge and innovation. Many of the Gavita innovations are now de facto standards in horticultural lighting. In 2009 Gavita entered the hobby / hydroponics market as Gavita Holland bv with a selection of adapted professional luminaries and a series of new products, specifically aimed at the hobby indoor and greenhouse grower.

Based in Aalsmeer, The Netherlands, Gavita serves customers world-wide. As a development partner of Philips, General Electric and Osram, Gavita designs and produces state of the art electronic ballasts, high efficiency reflectors and complete fixtures.

For greenhouses and indoor facilities, Gavita designs lighting plans and in their testing facilities evaluates lamps and reflectors for hundreds of horticultural growers. Testing facilities include the Ulbricht integrating sphere for accurate light measurements.

Pro-line

The Gavita Pro-line is a series of professional horticultural products that have been adapted for the hobby user. These products have proven themselves in professional greenhouses and indoor growing facilities all around the world.

Pro-line Reflectors

Gavita's best reflectors have been selected from the Pro-line. All reflectors are replaceable and made of high grade Miro aluminium, guaranteeing the best performance available.

Pro-line Classic Fixtures

Eliminate electromagnetic interference by using Gavita's Pro-line Complete Fixtures. Long wires from remote high frequency electronic ballasts to lamps can cause EMI.

Pro-line E-Series Fixtures & Master Controller

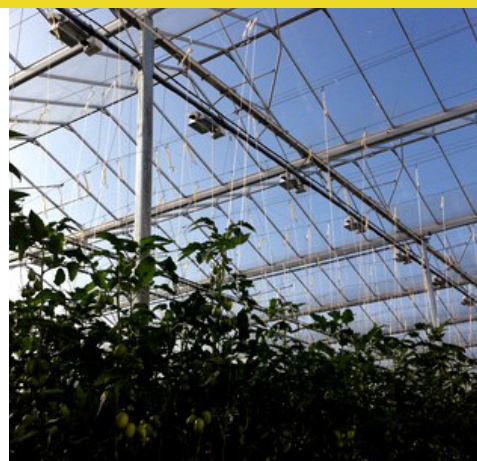
The best just got better! The new Gavita Pro line e-series are improved models and are suitable for central control with the Gavita Master lighting controllers. Now you can have complete lighting control at your fingertips.

The Master Controllers enable you to switch, dim, and boost up to 80 e-series fixtures. They replace your switchboard completely, eliminate inrush current, have advanced features such as sunrise and sunset simulation and protect your valuable crop by temperature safety features.

The Master Controller will automatically dim your lamps when your climate control is no longer able to sustain a healthy climate, and completely switches them off when your climate control fails, safeguarding your crop.

It can control a text messaging module or alarm system to notify you instantly when a failure occurs. You can even choose to run one room with 80 ballasts or two rooms with each 40 ballasts in an alternating 12/12 cycle.

Installation of the controller and e-series fixtures is completely plug-and-play. All you need to do is connect the controller cable to the fixtures and plug the fixtures and controller into mains.





PRO 270E LEP SUP / GROW

The Gavita Pro 270E LEP is a plasma light fixture based on the LUXIM Light Emitting Plasma (LEP) technology. It is completely solid state (no moving parts) and suitable for climate rooms (damp environments). They are suitable for central control with the Gavita Master lighting controllers. Now you can have complete lighting control at your fingertips.

Technology

The LEP technology is based on a radio frequency driver which excites an emitter cell without electrodes. The molecules in the emitter transform into plasma state, emitting an intense full continuous spectrum light.

Features & Benefits

- No electrode wear which translates in a very long lamp life
- Very high quality light (full spectrum) because of the molecular light emission, including UVA and UVB
- A full continuous light
- Very stable light spectrum
- Long output stability (at mean stable output) over time
- Absence of infrared radiation

Application

The Gavita Pro 270E LEP is developed for plant cultivation, but can also be used in any environment when a high quality, full continuous light source has advantages.

Emitter models

We have two different spectra available:

1. Grow spectrum (41.02 emitter) – high CRI full spectrum lighting for stand-alone use
2. Supplemental spectrum (41.01) – specifically developed to add quality spectrum in combination with HPS light, adding the spectrum that the HPS lacks.

The Gavita Pro LEP is available as a convection cooled unit and as an air cooled unit, where all heat emitting parts are mounted in a 150mm/6" tube which requires active cooling. Both emitter versions are available in the convection cooled as well as the air cooled unit.



PRODUCT #	DESCRIPTION
07500217	FIXTURE GAVITA PRO 270E LEP 41.01
07500218	FIXTURE GAVITA PRO 270E LEP 41.02



WHICH LEP FOR WHICH PURPOSE?



Growing in indoor conditions without sunlight not only requires a good climate but also a good quality light. Though one can grow successful under HPS alone or a combination of HPS and MH, it is still not the full spectrum our sun delivers. The Gavita light Plasma fixtures produce light with a spectrum similar to that of the sun.

Recently Gavita introduced a LEP fixture which produces less red spectrum and more green and yellow for use in combination with HPS. The philosophy behind that is very simple. HPS is the most efficient technology to produce red light, so why would you want your LEP to produce this red spectrum when used in combination with HPS? This type of emitted light is more efficient to use in combination with HPS, and still provides enough quality spectrum for a vegetative cycle. The spectrum of the O1 emitter primarily picks up where the HPS stops. Another advantage of the O1 emitter is that it has a 50,000 hours lifetime, over 30,000 over the O2 emitter.

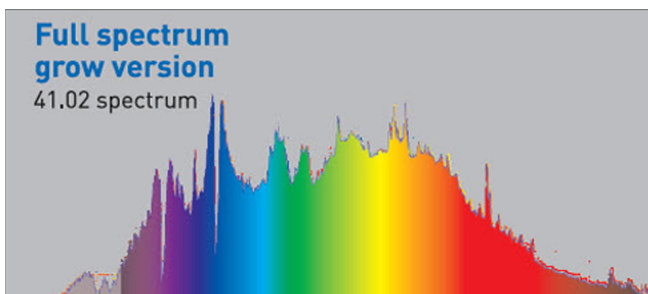
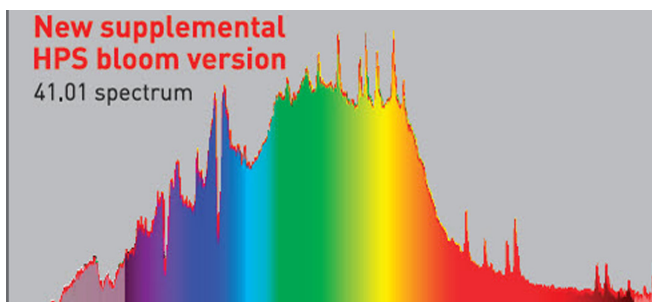
The original LEP with O2 emitter is also still available from Gavita and produces the best spectrum for a pure vegetative cycle or for artificial sunlight. The lamp offers efficient benefits, for example, in a dedicated grow room. It is still a good choice to use it with HPS, though the O1 green emitter has the advantage there. There is something to choose now when it comes to plasma.

Losses and you have losses from wall reflection, but it gives you a much better indication than using lux and lumens.

LEP is more efficient than high temperature MH lamps and much more stable. The lifetime is as much as 30,000-50,000 hours compared to the 2,000-4,000 of a MH. It has a better light quality and is more efficient than MH. But is it more efficient than HPS? No, it is not.

- Gavita Holland- Garden Culture NA Issue #1

We recommend the O1 version as most efficient to complement HPS light during the generative phase and suitable for short vegetative cycles. The O2 version is also suitable for a combination with HPS but has a better quality than the O1 for vegetative development, so it is best utilized in a pure vegetative environment or for sunlight simulations. Use one Gavita Pro 270e LEP in combination with a maximum of 1200W HPS lighting for a better color spectrum which results in healthier plants, higher quality and a better yielding crop.



LUMENS ARE FOR HUMANS!

Gavita Pro lighting fixtures have a higher output than any other HID lighting product in the market. That's 15-20% more light for your money, every day you use it, 365 days a year.

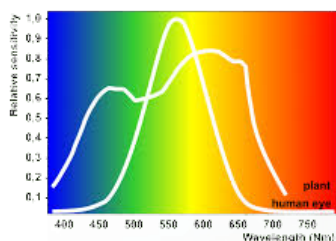
IT'S ALL ABOUT PHOTONS-Many lamp manufacturers will specify the output of their lamps (illuminance) in lumens, though this just specifies how we humans perceive the intensity of that light. Our eyes are the most sensitive to green light of 555nm, but plants are sensitive to a much broader spectrum. So what is the right way to specify horticultural lamps and how can you calculate with that?

PAR SPECTRUM- Plants primarily use the light ranging from 400-700nm bandwidth (violet to far red). The light within this spectrum is called Photosynthetic Active Radiation (PAR). So the spectrum of light that plants are sensitive to is much broader than what we see. Using lumens which are measured according to what the eye is sensitive to, is therefore not a correct representation of the grow light properties of a lamp.

PHOTOSYNTHETIC PHOTON FLUX- Scientists discovered long ago that there is a relationship between the number of photons and photosynthesis. It takes about 8-10 photons to bind one CO₂ molecule. They also discovered that there is only little difference in the effectiveness of blue or red light. So they defined a direct relationship between the number of photons in the PAR spectrum and the photosynthetic potential of that light.

For many years, professional researchers have used photon counts in the PAR spectrum as a standard and the greenhouse industry followed very quickly. European horticultural lamp manufacturers specify the output of their lamps in PAR photons per second. This is called Photosynthetic Photon Flux (PPF) and is expressed in micromoles per second ($\mu\text{mol/s}$). This is the accepted professional industry standard now.

CALCULATING WITH MICROMOLES- If you know the output of a lamp you can calculate how many photons will reach your crop based on the lit surface and your reflector efficiency. The more photons the more potential photosynthesis. For example, if your luminaire outputs 2000 $\mu\text{mol/s}$ and you spread that light over a 2m² surface the average irradiation on that surface will be 1000 $\mu\text{mol/m}^2/\text{s}$. This is what we call Photosynthetic Photon Flux Density (PPFD). In practice it is a bit more complicated as you have to calculate the reflector losses and you have losses from wall reflection but it gives you a much better indication than using lux and lumens.



GAVITA PRO 600E SE

- Completely sealed housing with GORE-TEX[®] ventilation plug, no moving parts, completely silent and cool to the touch
- Suitable for high frequency 400V electronic horticultural lamps with 10-25% more output than traditional HPS lamps
- High light maintenance: >95% per year so you only need to change your lamp once per year
- Replaceable 96% efficient Gavita HR96 reflector for optimal efficiency
- Controllable output: dim or boost your light to adjust it to changing circumstances or grow phases
- Soft dim which gradually changes the output when switched, eliminating stress on the lamp
- Equipped with very high frequency Gavita electronics (>100 kHz)
- No electromagnetic interference problems through the integrated design.

FEATURES & BENEFITS:

- Controllable 600W EL fixture
- Comes with a Gavita Pro 600W 400V EL E40/E39 lamp, 1120 $\mu\text{mol s}^{-1}$
- Highest output 600W fixture in the market using 400V EL lamp
- Suitable for Gavita Master Controller
- Plug-and-play installation
- Control range 50-110%
- Lights more than 1 square meters with 1000 $\mu\text{mol m}^{-2} \text{s}^{-1}$



PRODUCT #	DESCRIPTION
07500222	FIXTURE GAVITA 600E SE



GAVITA PRO 1000E DE

The best just got better! The new Gavita Pro line e-series are improved models and are suitable for central control with the Gavita Master lighting controllers. Now you can have complete lighting control at your fingertips.

Gavita Pro line HPS fixtures are the professional standard for efficient climate room lighting. Running on standard 120V - 240V they power the high voltage horticultural electronic lamps, which are superior in spectrum, light output and light maintenance over time.

FEATURES & BENEFITS:

- The professional fixture of choice
- Comes with a Gavita Pro Plus 1000W 400V DE EL lamp, 2100 $\mu\text{mol s}^{-1}$
- Highest output and efficacy in the market (A++ energy label)
- Suitable for Gavita Master Controller
- Plug-and-play installation
- Control range 50-115%
- Lights more than 2 square meters with 1000 $\mu\text{mol m}^{-2} \text{s}^{-1}$
- CSA C/US Certified

PRODUCT #	DESCRIPTION
07500224	FIXTURE GAVITA 1000E DE



GAVITA PRO 6/750E DE FLEX

New in the Pro line e-series is the 6/750e DE FLEX fixture, which utilizes a newly developed Gavita double ended Pro 750W 400V EL lamp. The control range of this lamp is 400-825W, bridging the gap between 600W and 1000W lamps. We named it 6/750 DE FLEX because it is as efficient running on 600W as it is on 750W. In many cases it is a retrofit replacement for a 1000W air cooled fixture, while running at just 825W. This will save you up to 20% electricity. The output of the lamp, running at 750W, is 1500 $\mu\text{mol s}^{-1}$ (2 $\mu\text{mol s}^{-1}$ per Watt).

Gavita Pro line HPS fixtures are the professional standard for efficient climate room lighting. Running on standard 240 V they power the high voltage horticultural electronic lamps, which are superior in spectrum, light output and light maintenance over time.

FEATURES & BENEFITS:

- New! Right-size your light for any size room
- Comes with the new Gavita Pro 750W 400V EL DE lamp, 1500 $\mu\text{mol s}^{-1}$
- Gavita double ended lamp has high efficiency range from 600-825W
- Total control range 50-110%
- Suitable for Gavita Master Controller
- Plug-and-play installation
- Lights more than 1,5 square meters with 1000 $\mu\text{mol m}^{-2} \text{s}^{-1}$
- CSA C/US Certified

PRODUCT #	DESCRIPTION
07500223	FIXTURE GAVITA 6/750E DE





GAVITA MASTER CONTROLLER

Both the EL1 and EL2 feature auto-dim, auto-shutdown, sunrise/sunset and timer. The EL1 has one output channel, while the EL2 has 2 output channels and additional outputs for External Contactor Modules and alarm contacts. For one room without auxiliary equipment or alarm contacts, the EL1 is the best choice for you. If you require switched auxiliary equipment during lights on/off, alarm contacts and/or a 2 room 12/12 setup, the EL2 is most suitable.

FUNCTIONALITY OVERVIEW

- EASY INSTALLATION
- CLEAR INTERFACE
- REPLACES TIMERS AND CONTACTORS
- FLEXIBLE SWITCHING
- DIMMING AND BOOSTING
- SWITCHING AUXILIARY EQUIPMENT

A NEW GENERATION OF GAVITA MASTER CONTROLLERS

Take control of your grow lights and switch, dim or boost them from a simple, clean interface. Our improved, second-generation Master controller now has advanced functionality like sunrise and sunset settings, safety control features, logging and independent light cycles (EL2 only).

We also offer Fan control in our new EL1F and EL2F controllers. The smart, integrated fan controller directly controls your EC fans for a stable grow room environment.

MASTER CONTROLLER EL1 & EL2 – GEN 2

Lighting control at your fingertips! The Master controller EL1 and EL2 Gen2 are our entry-level systems for centrally controlling large rooms with e-series fixtures. The second generation of Master controllers features improved and expanded functionality that raises the bar:

- Non-volatile memory
- Event logging
- Independent sunrise and sunset settings
- Independent light cycles on the EL2

PRODUCT #	DESCRIPTION
07150233	MASTER CONTROLLER EL1 GEN 2
071502034	MASTER CONTROLLER EL2 GEN 2

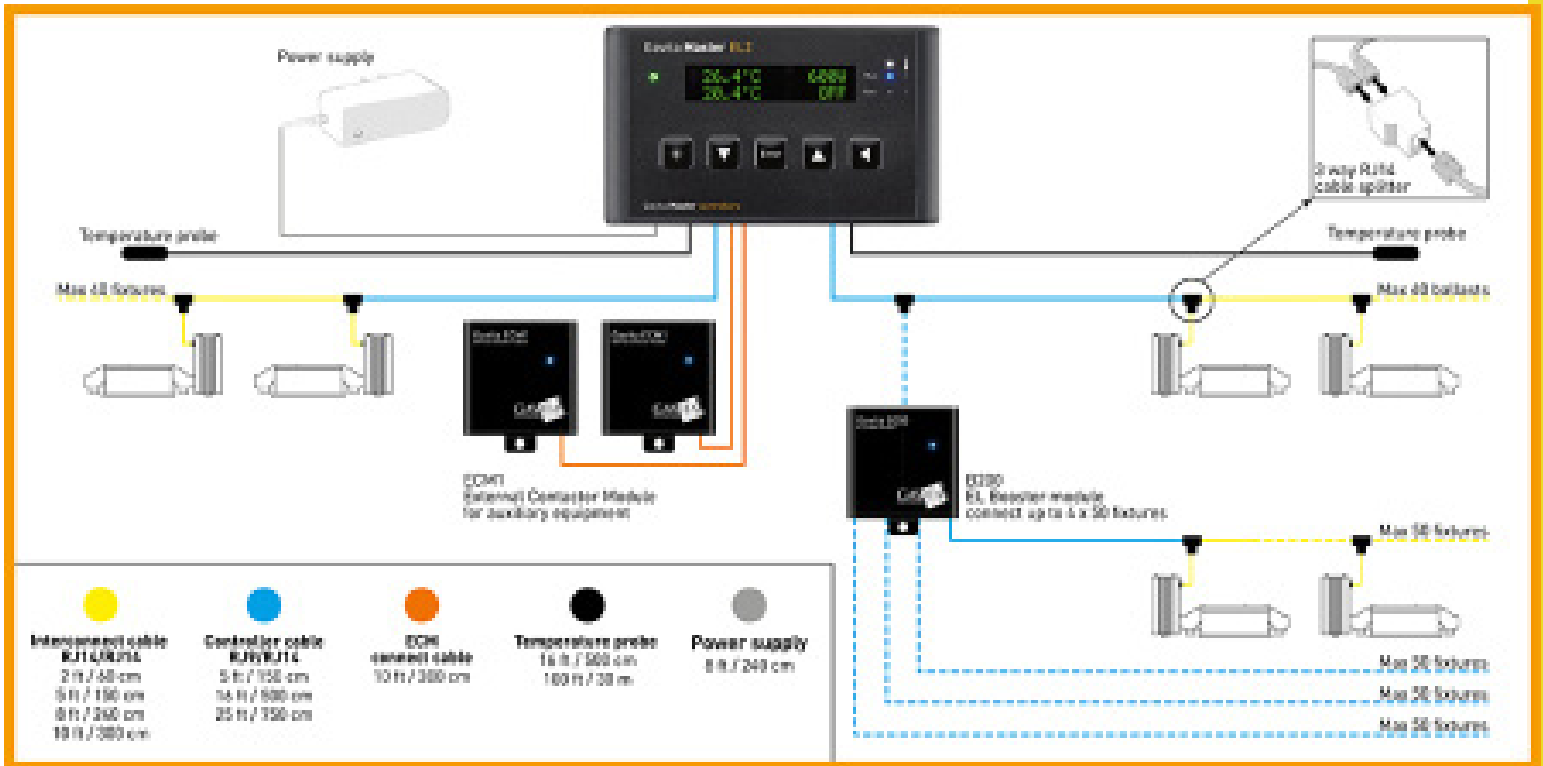
Master controller EL1F & EL2F – Gen 2

The EL F controllers are new to the family. Not only do they offer everything the Gen 2 controller has to offer in control and safety, but they also provide integrated, intelligent fan control, based on a PID algorithm:

- 0-10V EC fan control
- Intelligent PID fan control
- Non-volatile memory
- Event logging
- Independent sunrise and sunset settings
- Independent light cycles on the EL2

PRODUCT #	DESCRIPTION
	MASTER CONTROLLER EL1F GEN 2
	MASTER CONTROLLER EL2F GEN 2

DON'T FORGET YOUR MASTER CONTROLLER ACCESSORIES!



PRODUCT #	DESCRIPTION
07150200	MASTER CONTROLLER EL1
07150201	MASTER CONTROLLER EL2
07150202	ECM1 US 120V
07150203	ECM1 US 240V
07150204	GAVITA RJ9/RJ14 25 FT
07150205	GAVITA RJ14/RJ14 10 FT
07150206	GAVITA TEMP. PROBE 5M
07150207	GAVITA TEMP. PROBE 30M
07150208	GAVITA MC POWER CORD 120V
07150209	GAVITA RJ14 SPLITTER- 3 WAY
07150210	GAVITA BOOSTER B2000
07150211	GAVITA ECM CABLE 10 FT
07150212	GAVITA RJ9/RJ14 16 FT
07150213	GAVITA RJ14/RJ14 8 FT
07150214	GAVITA RJ14/ RJ14 5 FT



GAVITA HORTISTAR REFLECTOR 600SE



A reflector should bring as much light to your crop as possible and do this in a uniform way. The Gavita HortiStar 600 does just that: It has one of the most efficient reflectors in the market with an efficiency of 96 %. It is our most popular 600/750 W horticultural reflector. Using a professional quality fixture and reflector has suddenly become very affordable. The Gavita HortiStar 600 reflector fixture comes with a replaceable Miro aluminium reflector that can be replaced with the lamp still in the lamp holder. As an alternative, inlay reflectors are available. The fixture is suitable for HPS/MH lamps up to 750 Watt. The lamp cord terminal is shielded by a metal housing. Installation is very easy with the two eye bolts.

PRODUCT #	DESCRIPTION
07520245	SHADE GAVITA 600 HORTISTAR

GAVITA HORTISTAR REFLECTOR 1000DE



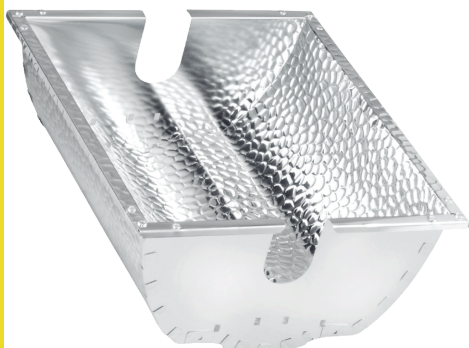
One of the best 1000 Watt HPS lamps in the market is the double ended Philips GreenPower Plus 1000W 400V EL lamp. Specifically designed for high frequency electronic ballasts it has a connection at each side of the lamp, removing the need for a frame support wire inside of the lamp. The absence of a frame wire eliminates any shadows in the beam. Instead of vacuum it is gas filled which allows for a smaller arc tube, improving the optical control. The Gavita HortiStar 1000 DE reflector is specifically designed for this type of lamp. The Gavita HortiStar 1000 DE comes with a replaceable high efficiency Miro aluminium reflector. As an alternative, inlay reflectors are available. It is specifically designed for 1000 Watt double ended lamps. The lamp cord terminal is shielded by a metal housing.

PRODUCT #	DESCRIPTION
07520246	SHADE GAVITA 1000 HORTISTAR

GAVITA REPLACEMENT REFLECTORS

Replacement reflector for Pro 600, 6/750 DE FLEX / Pro 1000 DE / HortiStar 600 SE or 1000 DE. Made with Vega aluminium. Reflector efficiency 96%. Easily replaceable reflector.

PRODUCT #	DESCRIPTION
07520247	SHADE REPLACEMENT GAVITA 600W SE
07520248	SHADE REPLACEMENT GAVITA 1000W DE



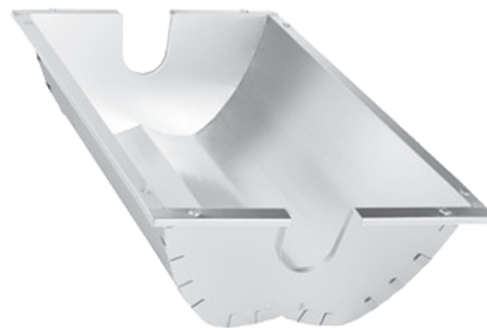
<p>for single ended 400-600W HPS</p>	<p>138° beam angle 138°</p>	<p>most suitable for overlapping plans</p>	<p>designed for uniformity penetration</p>	<p>plug & play HortiStar replacement reflector</p>	<p>plug & play Pro line replacement reflector</p>
<p>for double ended 750-1000W HPS</p>	<p>138° beam angle 138°</p>	<p>most suitable for overlapping plans</p>	<p>designed for uniformity penetration</p>	<p>plug & play HortiStar replacement reflector</p>	<p>plug & play Pro line replacement reflector</p>



GAVITA PRO M 110 DE SR REFLECTOR

FEATURES & BENEFITS:

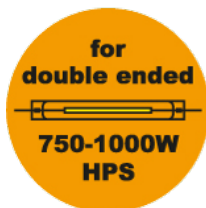
- Replacement reflector for Gavita Pro line & HortiStar
- Easy to install, no tools required
- Medium spread for optimal uniformity in small rooms (110° beam angle)
- Suitable for double ended 750-1000W HPS
- Most suitable for single plans
- Designed for uniformity and deep crop penetration in 1 or 2 fixture configurations



One fixture optimal room size: 1,1 m / 3.61 ft x 1,8 m / 5.91 ft (Mammoth G1 tent)

Two fixtures optimal room size: 1,8 m / 5.91 ft x 2,2 m / 7.22 ft (Mammoth G2 tent)

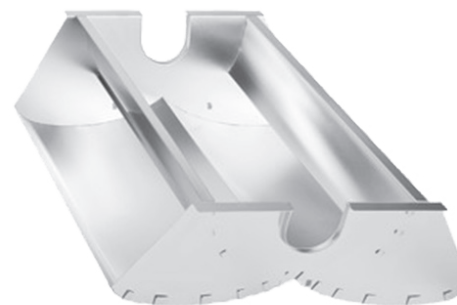
PRODUCT #	DESCRIPTION
07520252	GAVITA REFLECTOR SMALL ROOM



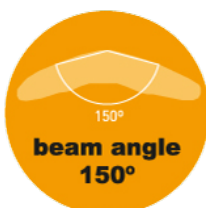
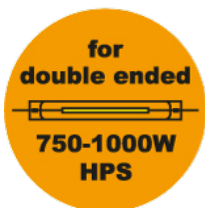
GAVITA PRO W 150 DE REFLECTOR

FEATURES & BENEFITS:

- Replacement reflector for Gavita Pro line & HortiStar
- Easy to install, no tools required
- Wide spread for optimal uniformity (150° beam angle)
- Suitable for 750-1000W HPS double ended lamps



PRODUCT #	DESCRIPTION
07520251	GAVITA REFLECTOR WIDE



GAVITA PRO 1650E LED ML

The Gavita Pro 1650e LED ML is a 1650 $\mu\text{mol s}^{-1}$ fixture with an efficiency of 2.6 $\mu\text{mol s}^{-1}$ per Watt. ML stands for Multi-Layer, as the array of LEDs provides a uniform spread of light at a short distance to the crop. The 8-bar configuration allows you to use it in low rooms, over single benches, or even in 4x4' or 5x5' tents.



- High efficiency (2.6 $\mu\text{mol s}^{-1}$ per Watt)
- High output for high intensity (1650 $\mu\text{mol s}^{-1}$)
- Reduced HVAC requirement (30-40% less)
- High-quality 120-277V Philips Advance drivers
- Top bin LEDs
- Balanced full spectrum
- External control
- Priva control compatible
- UL Listed



PRODUCT #	DESCRIPTION
07500228	GAVITA FIXTURE PRO 1650E LED
07500231	GAVITA ADAPTOR FOR 1650E LED
07500232	GAVITA 8' POWER CORD FOR 1650E LED

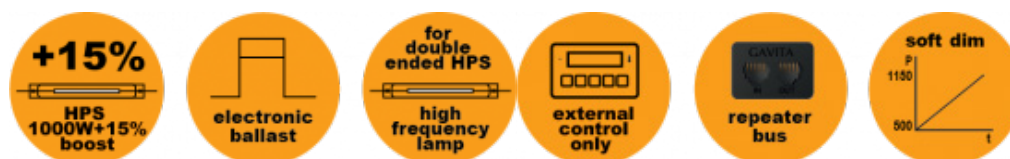
GAVITA PRO 1000E DE 208-240 SL

The Gavita Slim Line series is part of the 'professional' line of fixtures. Designed especially for grow rooms, our professional fixtures suit flexible and fixed installations. They are compact and come with a Repeater Bus interface (no manual control). For 208V three-phase or 240V. The reduced height make this the fixture of choice for low rooms.

- Slim-line ballast, only 9.7 inches high
- Highest light output and maintenance over time
- Highly efficient passive cooling of ballast for longer electronics lifetime
- Sealed housings with Gore-Tex® ventilation plugs
- External control with Repeater Bus interface
- Mounting brackets for Unistrut/c-profiles available



PRODUCT #	DESCRIPTION
07500228	FIXTURE GAVITA SL 1000E DE 208-240V



GAVITA PRO 400V HIGH FREQUENCY LAMPS SUITABLE FOR PRO-LINE HIGH FREQUENCY BALLASTS

GAVITA PRO 600W 400V EL

SPECIFICATIONS:

Brand: Gavita

Type: Pro EL 600 Watt

Power: 600 Watt

Lamp base: E40

Lumens: 85.000

Growlight (μMol): 1150

Light maintenance 1 year (5000 hours):: >95%

Voltage: 400V

PRODUCT #	DESCRIPTION
07450825	LAMP GAVITA PRO 600W 400V EL



GAVITA PRO 6/750 W EL DE FLEX

SPECIFICATIONS:

Brand: Gavita

Type: Pro EL DE

Power: 750 Watt

Lamp base: K12 x 30S

Growlight (μMol): 1500

Light maintenance 1 year (5000 hours):: >95%

Voltage: 400V

PRODUCT #	DESCRIPTION
07450828	LAMP GAVITA PRO 6/750W 400V DE



GAVITA PRO PLUS 1000W EL DE

Professional European 1000 W high frequency horticultural lamp. No wireframe, quartz glass outer bulb for perfect optical quality. Double ended, K12 x 30S lamp base for accurate lamp positioning. Extremely high photosynthetic photon flux (ppf): 2100 μmol (see specs). Only suitable for high frequency, high voltage Electronic ballasts (Gavita Pro series). 1 year warranty on suitable electronic ballasts (Gavita Pro series)

SPECIFICATIONS:

Brand: Gavita

Type: Pro EL 1000 Watt

Power: 1000 Watt

Lamp base: K12 x 30S

Growlight (μMol): 2100 μmol

Voltage: 400V

PRODUCT #	DESCRIPTION
07450829	LAMP GAVITA PRO 1000W 400V DE 2100 μMOL



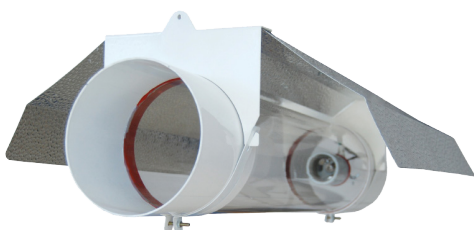


ULTRAGROW T5 FLUORESCENT FIXTURE WITH BULBS

- Cool-running operation
- Convenient On/Off switch
- 8 feet ground power cord
- Hanging cable system
- Low heat and high lumen output
- Extremely energy efficient
- Fully assembled
- Cables included
- 4' with 4 lamps, or 4' with 8 lamps



PRODUCT #	DESCRIPTION
07440228	T5 FIXTURE 4'4' FIXTURE WITH BULBS
07440229	T5 FIXTURE 4'8' FIXTURE WITH BULBS



ULTRAGROW COOL TUBE

- Built-in socket with 15' ballast cord
- High quality aluminum for excellent reflectivity
- Tempered glass – easy to clean
- Maximum cooling efficiency
- Easy to assemble
- Hangers included
- Available in 6" & 8"

PRODUCT #	DESCRIPTION
07520150	SHADE 6" COOL TUBE
07520151	SHADE 8" COOL TUBE



ULTRAGROW WING REFLECTOR

- Built-in socket with 15' ballast cord
- High quality aluminum for excellent reflectivity
- Maximum cooling efficiency
- Hangers included

PRODUCT #	DESCRIPTION
07520100	SHADE ECCO WING REFLECTOR 15' CORD



ULTRAGROW WING DOUBLE-ENDED REFLECTOR

- Double-Ended Socket with 15' ballast cord
- High quality aluminum for excellent reflectivity
- Compact and light weight
- Hangers included

PRODUCT #	DESCRIPTION
07525003	SHADE DE WING REFLECTOR



SQUARE DOUBLE-ENDED REFLECTOR

- Double-Ended Socket with 15' ballast cord
- High quality aluminum for excellent reflectivity
- Powder coated housing
- Compact size
- Hangers included

PRODUCT #	DESCRIPTION
07525005	SHADE DE SQUARE REFLECTOR



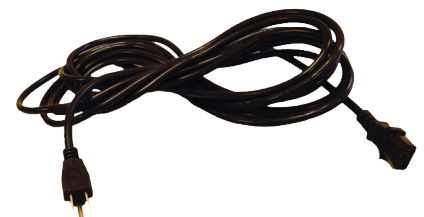
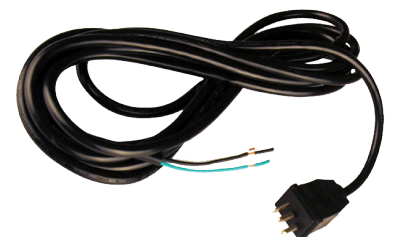
ECO MAGNETIC BALLAST 1,000 WATT

- Dual input voltage: 120V/240V
- 120V power cord included
- Compatible with High Pressure Sodium & Metal Halide lamps

PRODUCT #	DESCRIPTION
07550049	BALLAST 1000W ECO



PRODUCT #	DESCRIPTION
07500196	WIRE (POWER) 120V PLUG BOTH ENDS 6'
07500197	WIRE (POWER) 240V PLUG BOTH ENDS 6'
07560022	POWER CORD 120V 20'
07560023	POWER CORD 240V 20'
07550199	WIRE (LAMP) 600V 15' ONE PLUG
07550398	WIRE (LAMP) 10' EXTENSION
07550399	WIRE (LAMP) 50' EXTENTION





METAL HALIDE LAMP

- Sky Blue Metal Halide provides an ideal spectrum to help plants grow in vegetative stages.
- 7,200K blue spectrum is perfect for young plants.
- Operating position: Universal with enclosed fixtures.
- Average life hours: 10,000.

PRODUCT #	DESCRIPTION
07450058	PLANTMAX MH 250W
07450059	PLANTMAX MH 400W
07450060	PLANTMAX MH 1000W



METAL HALIDE CONVERSION LAMP 7,200K

- Fits High Pressure Sodium ballast
- 7,200K spectrum for vegetative stage
- Operating position: Universal

PRODUCT #	DESCRIPTION
07450064	PLANTMAX CONVER 250W 7200K
07450065	PLANTMAX CONVER 400W 7200K
07450066	PLANTMAX 600W MH 7200K
07450067	PLANTMAX CONVER 1000W 7200K



HIGH PRESSURE SODIUM CONVERSION LAMP

- Fits Metal Halide ballast
- Great for flowering stage
- Operating position: Universal

PRODUCT #	DESCRIPTION
07450062	PLANTMAX CONVER 360W
07450063	PLANTMAX CONVER 940W



PLANTMAX HIGH PRESSURE SODIUM LAMPS

- High Pressure Sodium with adjusted blue spectrum brings you the best yields in flowering and fruiting
- Quality, Values & Results
- Operating position: Universal

PRODUCT #	DESCRIPTION
07450053	PLANTMAX HPS 400W
07450054	PLANTMAX HPS 430W
07450055	PLANTMAX HPS 600W
07450057	PLANTMAX HPS 1000W



DOUBLE-ENDED HIGH PRESSURE SODIUM 1,000 WATT LAMP

- Excellent lumen maintenance for maximum yields
- Commercial grade quality for professional growers
- Double – Ended design for optimal reflecting application
- Operating position: Horizontal

PRODUCT #	DESCRIPTION
07450080	PLANTMAX HPS 1000W DE



T5 FLUORESCENT HO LAMP

- T5 Fluorescent Lamps bring you high lumen output
- With extreme high efficacy and long life, you can expect great results for plant growth as well as energy savings
- Available in both cool (6,500K) and warm (3,000K) temperatures
- Operating position: Horizontal

PRODUCT #	DESCRIPTION
07460041	T5 BULB 2FT 3K PLANTMAX
07460042	T5 BULB 2FT 6.5K PLANTMAX
07460043	T5 BULB 4FT 3K PLANTMAX
07460044	T5 BULB 4FT 6.5K PLANTMAX



HEAVY DUTY GROUNDED TIMER

For air conditioners, heaters and other heavy electrical loads. Three (3) on - three (3) off settings per day. Rating: 1.5 amp, 1 HP for use with air conditioners, with standard grounded plug.

PRODUCT #	DESCRIPTION
03150021	INTERMATIC 15 AMP GROUNDED TIMER



HANGING CORDS

PRODUCT #	DESCRIPTION
07520149	SHADE HANGERS ULTRA



NEXTLIGHT LED GROW LIGHTS

NextLight LED Grow Lights have been specifically designed to match the HPS spectrum, providing the same sun-like qualities plants love without the negatives ..

Spectrum

NextLight Commercial Series is a Game Changer in Grow Lighting- Full Spectrum LED. NextLight's Full Spectrum has been specifically designed to outperform the HPS spectrum, providing the same sun-like qualities plants love without the negatives of high energy requirements and high heat.

Commercial Series Universal Specifications

- Life Rating: 100,000 hrs
- Warranty: 5 Years Full
- Standard Operating Volts: 120v - 277v (347v Option Available)
- UL Certified
- No Bulb Replacements
- Made in the USA: Of US and Imported Parts

NEXTLIGHT MEGA

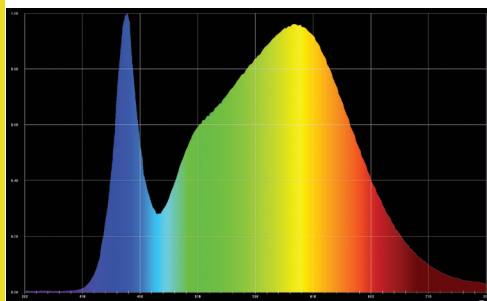
DE 1000w HPS Replacement

The NextLight Mega produces a high intensity full spectrum light designed to efficiently replace any DE 1000w HPS on the market. This bright white LED grow light is named "Mega" not for its size but for the increased production and large footprint it will supply to your canopy. Using only 650 watts, this light is perfect for growers looking to cover larger areas using less. The Mega covers a 5 ft x 5 ft flower footprint and a 7 ft x 7 ft veg footprint. This unit is part of the NextLight Commercial Series. This distinction means each unit is covered by a 5 year full manufacturer's warranty, has a 100,000 hour life rating, is UL listed and you will never have to change a bulb again.

The Mega is designed to meet the needs of commercial and home growers alike. We understand excessive power consumption, bulb replacements and heat are the biggest problems indoor growers face. The NextLight Commercial Series alleviates all of those issues. Coming in at 2.15 PPF/Watt, the Mega is the most efficient full spectrum LED, period.

NextLight's Full Spectrum provides the same sun-like qualities plants love without the negatives of high energy requirements and high heat. Using NextLight's Full Spectrum you will see faster growth, tighter internodal spacing and increased production overall.

PRODUCT #	DESCRIPTION
07503000	NEXTLIGHT MEGA 120/240
07153000	NEXTLIGHT DIMMER
07153001	NEXTLIGHT CAT6 PORT AND CORD



SPECIFICATIONS

- Flower Footprint: 5 ft x 5 ft
- Veg Footprint: 7 ft x 7 ft
- PPF: 1400
- Wattage: 650w
- PPF/Watt: 2.15



NEXTLIGHT VEG8 LED 8 Tube T5 Replacement

The NextLight Veg8 is a full spectrum, bright white LED grow light designed to efficiently replace a fluorescent 8 tube T5. This unit uses half the power, produces minimal heat and is silent. The Veg8 only draws 190 watts, covers a 2 ft x 4 ft veg footprint and eliminates the need to ever change a bulb again. It is part of the NextLight Commercial Series. This distinction means each unit is covered by a 5 year full manufacturer's warranty, has a 100,000 hour life rating and is UL listed.

The Veg8 is designed to meet the needs of commercial and home growers alike. We understand excessive power consumption, bulb replacements and heat are the biggest problems indoor growers face. The NextLight Commercial Series alleviates all of those issues. Coming in at 1.94 PPF/Watt, the Veg8 is the most efficient full spectrum LED 8 tube T5 replacement, period.

NextLight's Full Spectrum provides the same sun-like qualities plants love without the negatives of high energy requirements and high heat. Using NextLight's Full Spectrum you will see faster growth, tighter internodal spacing and increased production overall.

PRODUCT #	DESCRIPTION
07503001	NEXTLIGHT VEG8 120V
07503003	NEXTLIGHT VEG8 240V



SPECIFICATIONS

- Veg Footprint: 2 ft x 4 ft
- Flower Footprint: Not Recommended
- PPF: 380
- Wattage: 190w
- PPF/Watt: 2.0
- Unit Dimensions: 45 in x 22 in

NEXTLIGHT CORE LED GROW LIGHT

Use for Flowering in Restricted Spaces

The NextLight Core is a full spectrum bright white LED grow light. We harnessed the same high intensity light of the NextLight Mega and redesigned it for use in smaller spaces. The NextLight Core is an enhanced version of its predecessor, the NextLight Mini. Boasting a 50% increase in light output and using only 190 watts, this light is perfect for small tents and any space where venting and air conditioning is an issue.

The Core covers a 3 ft x 3 ft flower footprint and a 4 ft x 4 ft veg footprint. This unit is part of the NextLight Commercial Series. This distinction means each unit is covered by a 5 year full manufacturer's warranty, has a 100,000 hour life rating, is UL listed and you will never have to change a bulb again.

The Core is designed to meet the needs of commercial and home growers alike. We understand excessive power consumption, bulb replacements and heat are the biggest problems indoor growers face. The NextLight Commercial Series alleviates all of those issues. The Core is extremely efficient coming in at 1.92 PPF/Watt, NextLight's Full Spectrum provides the same sun-like qualities plants love without the negatives of high energy requirements and high heat. Using NextLight's Full Spectrum you will see faster growth, tighter internodal spacing and increased production overall.

PRODUCT #	DESCRIPTION
07503002	NEXTLIGHT CORE 120V
07503004	NEXTLIGHT CORE 240V



SPECIFICATIONS

- Flower Footprint: 3 ft x 3 ft
- Veg Footprint: 4 ft x 4 ft
- PPF: 380
- Wattage: 190w
- PPF/Watt: 2.0
- Unit Dimensions: 22 in x 20.9 in





SOLIS TEK®
DIGITAL LIGHTING

SOLISTEK A1 1000W COMPLETE LIGHT SYSTEM

The SolisTek A1 Complete Lighting System is a professional high output fixture that powers both double ended HPS & Metal Halide lamps. SolisTek DE HPS lamps have proven to have incredibly high PAR output, a broader spectrum than traditional single ended HPS lamps, and only 5% depreciation @ 10,000 hours.

Multi-Wattage, Multi-Voltage, 9.81A @ 120V - 4.91A @ 240V - Generator Ready
Wattages: 1100W, 1000W, 750W, 600W.

Designed around the competition, the SolisTek A1 provides high output & consistent uniform spread. This fixture is the preferred choice among growers who understand light quality.

FEATURES:

- Professional 1000W adjustable ultra high frequency lighting system
- High efficiency super reflective horticultural aluminum
- Suitable for High Pressure Sodium & Metal Halide Lamps
- Incredibly high output & even spread
- Featuring Ignition Control™ & SenseSmart™ diagnostic check
- Includes SolisTek high output 2,100 µmol HPS lamp
- Light weight & easy to install & reflector is easily replaceable

PRODUCT #	DESCRIPTION
07500333	SOLISTEK A1 1000W DE FIXTURE

SOLISTEK C1 315W CMH COMPLETE FIXTURE 120/208/240V

The SolisTek C1 is designed specifically for full spectrum and low heat. This high performance system exceeds any single CMH fixture on the market with PAR output and spread consistency. The C1 system was created to be an incredibly easy system to set up. With the ability to daisy chain multiple systems in series, installation is a breeze. Note: The C1 should not be more than 32" above the canopy

FEATURES:

- Digital lighting system designed for CMH
- Suitable for 315W Ceramic Metal Halide lamps only
- Daisy-chain ability to run multiple fixtures in series
- Ignition Control™, SenseSmart™, Soft Start technology ready
- Guaranteed high output & consistent spread
- Incredible par output, top performing single CMH full fixture
- Industry's lowest output THD%

PRODUCT #	DESCRIPTION
07500044	SOLISTEK C1 CMH 315W FIXTURE

SOLISMAX56 DE COMMERCIAL REFLECTOR

SolisTek exclusive DE reflector designed to outperform complete fixture systems. This 1000/600W DE Lamp compatible and extremely high PAR & output reflector runs 25-50% cooler than complete fixture systems.

FEATURES:

- 14 AWG highly conductive tinned wire
- RFI shielded
- 95% reflective German material
- 10" x 18" compact greenhouse design, designed for commercial use
- 15' lamp cord
- Massive 5' x 6' high PAR footprint
- Compact size perfect for greenhouse light deprivation techniques

PRODUCT #	DESCRIPTION
07520301	SOLISMAX56 DE REFLECTOR



SOLISMAX44 SE 8" REFLECTOR

8" SolisMax44 - Dimensions: 21" x 25" x 10"

FEATURES:

- Maximum and consistent spread for 4' x 4' space
- Removable glass for non air cooled operation and maximum UV
- Very high PAR output and consistencies
- 95% highly reflective aluminum material
- completely sealed system, air tight & free of leaks
- streamline socket ready for 400/600/1000W applications
- 15' pre-wired lamp socket built into reflector



PRODUCT #	DESCRIPTION
07520302	SOLISMAX44 SE 8" REFLECTOR

SOLISMAX56 SE 6" REFLECTOR

(1000/600/400W Lamp compatible -Air Cooled 6" Duct) Dimensions: 10" x 18" x 7.5"

FEATURES:

- 14 AWG highly conductive tinned wire
- RFI shielded
- Low Iron Super Clear glass for maximum UV penetration
- 95% reflective German material
- 10" x 18" compact greenhouse design
- Removable lens for non air cooled use
- Massive 5' x 6' high PAR footprint



PRODUCT #	DESCRIPTION
07520300	SOLISMAX56 SE 6" REFLECTOR

SOLISTEK DIGITAL LAMP EXTENSION

SolisTek Digital Lamp Extensions

FEATURES:

- High Quality Upgraded Tinned wiring
- 14 AWG wiring
- High quality connectors
- Rated for 600V
- Increases overall conductivity for higher performance
- Lowers impedance

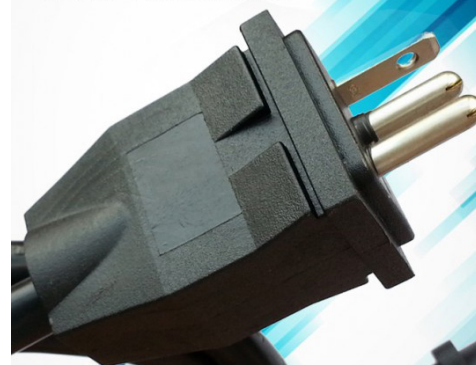
SolisTek offers a full line of high quality lamp extensions. SolisTek lamp extensions are not created equally. We use completely upgraded 14 AWG Tinned wiring for the least amount of resistance possible from the ballast to lamp. Using SolisTek digital lamp extensions prevents frequency output shifts to the lamp

Using higher quality lamp extensions with ultra high conductivity you can expect:

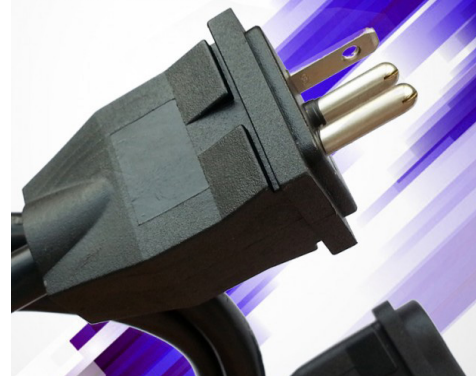
- The ability to ignite lamps from further distances (up to 90ft @ 1000w, or up to 75ft @ 600w)
- No resistance between ballast and lamp resulting with proper spectrum

PRODUCT #	DESCRIPTION
07550500	SOLISTEK 15' TINNED LAMP EXTENSION
07550501	SOLISTEK 25' TINNED LAMP EXTENSION
07550502	SOLISTEK 50' TINNED LAMP EXTENSION
07440100	SOLISTEK DIGITAL SPLITTER (1000W/600WX2)

15 FT
LAMP EXTENSION



25 FT
LAMP EXTENSION



SOLISTEK SINGLE ENDED LAMPS



SOLIS TEK®
DIGITAL LIGHTING

SOLISTEK SE MH LAMPS (Available in 600 AND 1000W)

- 4K Metal Halide is a pulse-start full spectrum lamp used for all stages of growth and bloom.
- 6K Metal Halide is a pulse-start lamp popularly used for vegetative growth to encourage shorter node spacing and bushier plants.
- 10K Metal Halide is a pulse-start lamp used for the last 7 - 14 days of bloom to allow better ripening and finishing.

Featuring Low Iron (Low-E) glass for enhanced UV penetration to your plants for higher quality and yield.

SOLISTEK HIGH FREQUENCY MH OFFERS:

- Color Enhanced Full Balanced Spectrum
- Less depreciation of PAR and lumen output over time.
- Precise Gas Combination for Increased Blues, Reds & UV
- True High Frequency Technology & Proper UV Balance
- Advanced HID Lamp Design for Prolonged Lamp Life
- Made for Quality, Consistency & Yield



SOLIS TEK®
DIGITAL LIGHTING **600W 4K DAYLIGHT**

SOLIS TEK®
DIGITAL LIGHTING **600W 6K BLUE**

SOLIS TEK®
DIGITAL LIGHTING **600W 10K FINISHER**

SOLIS TEK®
DIGITAL LIGHTING **1000W 4K DAYLIGHT**

SOLIS TEK®
DIGITAL LIGHTING **1000W 6K BLUE**

SOLIS TEK®
DIGITAL LIGHTING **1000W 10K FINISHER**

PRODUCT #	DESCRIPTION
07450070	SOLISTEK 1000 MH SE- 10K
07450071	SOLISTEK 1000 MH SE-6K
07450072	SOLISTEK 1000 MH SE- 4K
07450073	SOLISTEK 600 MH SE- 10K
07450074	SOLISTEK 600 MH SE-6K
07450076	SOLISTEK 600 MH SE- 4K

SOLISTEK SE HPS LAMPS (Available in 600 and 1000W)

The 2K HPS is optimal for all stages of growth.

FEATURES:

- Superior Photochemical Reactions
- Proper UV Balance
- Advanced HID Lamp Design
- Lamps made by Life Scientists for plants -Best Sunlight Replication
- Made for Quality, Consistency & Yield



PRODUCT #	DESCRIPTION
07450068	SOLISTEK 1000 HPS SE
07450069	SOLISTEK 600 HPS SE



SOLISTEK DOUBLE ENDED LAMPS



SOLIS TEK®
DIGITAL LIGHTING

SOLISTEK DE MH LAMPS (Available in 600 AND 1000W)

- 4K Metal Halide is a pulse-start full spectrum lamp used for all stages of growth and bloom
- 6K Metal Halide is a pulse-start lamp popularly used for vegetative growth to encourage shorter node spacing and bushier plants
- 10K Metal Halide is a pulse-start lamp used for the last 7 - 14 days of bloom to allow better ripening and finishing

SolisTek lamps contain enhanced UV Spectra. Exercise caution when working around any HID lamp that contains UV, always wear protective lenses.

SOLISTEK HIGH FREQUENCY MH OFFERS:

- Color Enhanced Full Balanced Spectrum
- Less depreciation of PAR and lumen output over time.
- Precise Gas Combination for Increased Blues, Reds & UV
- True High Frequency Technology & Proper UV Balance
- Advanced HID Lamp Design for Prolonged Lamp Life
- Made for Quality, Consistency & Yield

PRODUCT #	DESCRIPTION
07450774	SOLISTEK 1000 MH DE- 10K
07450773	SOLISTEK 1000 MH DE-6K
07450772	SOLISTEK 1000 MH DE- 4K
07450777	SOLISTEK 600 MH DE- 10K
07450776	SOLISTEK 600 MH DE-6K
07450775	SOLISTEK 600 MH DE- 4K

SOLISTEK DE HPS LAMPS (Available in 600 and 1000W)

The 2K HPS is optimal for all stages of growth.

FEATURES:

- Superior Photochemical Reactions
- Proper UV Balance
- Advanced HID Lamp Design
- Lamps made by Life Scientists for plants -Best Sunlight Replication
- Made for Quality, Consistency & Yield

PRODUCT #	DESCRIPTION
07450770	SOLISTEK 1000 DE HPS
07450771	SOLISTEK 600 DE HPS



	SOLIS TEK® DIGITAL LIGHTING	600W 4K DAYLIGHT
	SOLIS TEK® DIGITAL LIGHTING	600W 6K BLUE
	SOLIS TEK® DIGITAL LIGHTING	600W 10K FINISHER
	SOLIS TEK® DIGITAL LIGHTING	1000W 4K DAYLIGHT
	SOLIS TEK® DIGITAL LIGHTING	1000W 6K BLUE
	SOLIS TEK® DIGITAL LIGHTING	1000W 10K FINISHER



	SOLIS TEK® DIGITAL LIGHTING	1000W 2K
---	---------------------------------------	-----------------



SOLISTEK MATRIX SE/DE 1000W DIGITAL BALLAST 120/240V

The SolisTek SE/DE ballast will operate any single or double ended HPS or MH lamp at its optimal efficiency.

- Built in Digital Timer - Completely customizable on/off schedule settings for any grow cycle. Sync all SolisTek Ballasts on the same schedule with only 1 remote control. Eliminate unnecessary external components.
- Remote Control - The exclusive SolisTek remote control will allow you to wirelessly configure the wattage settings from over 70ft away and also set the integrated digital timer for your SolisTek Matrix Ballast(s). The Matrix remote control allows as many Matrix ballasts to be synced to the same schedule eliminating the need for an external controller.
- Green LCD Screen- Digital green read-out to visually display ballast settings and won't disrupt plant sleep cycle. Dark cycle-friendly!
- Ballast Life Timer -On board ballast 'odometer' that will count the number of hours the ballast has been used.

REMOTE CONTROL FOR MATRIX SE/DE

The exclusive SolisTek remote control will allow you to wirelessly configure the wattage settings from over 70ft away and also set the integrated digital timer for your SolisTek SE/DE Matrix Ballast(s), [STrooLCD].

The remote control allows as many Matrix ballasts to be synced to the same schedule, eliminating the need for an external controller. Only 1 remote needed for all SolisTek SE/DE Matrix ballasts.

PRODUCT #	DESCRIPTION
07570040	SOLISTEK MATRIX SE/DE 1000W BALLAST 120/ 240
07150041	SOLISTEK REMOTE CONTROL FOR MATRIX SE/DE

SOLISTEK SE/DE DIGITAL BALLAST 120/240V

SolisTek 600W SE/DE digital ballast designed for single & double ended lamps 120/240V (208V Compatible)

SolisTek SE/DE digital ballast now operates at 106+ kHz frequency, making it one of the highest frequency ballasts available on the market. The SolisTek SE/DE ballast will operate any single or double ended lamp at its optimal efficiency. We have matched single & double ended lamps in both HPS and MH.

The SolisTek Ballast is a digital ballast on a software based platform. Utilizing Japanese components and unparalleled engineering, SolisTek is able to achieve a less than 1% return rate.

SolisTek digital ballasts are equipped with:

- Ignition Control™ Sequential lamp ignition
- SenseSmart™ Pre-ignition self-diagnostic checks
- Low OUTPUT Total Harmonic Distortion (THD%)

PRODUCT #	DESCRIPTION
07570043	SOLISTEK 600/400 BALLAST 120/240 DE/SE
07570042	SOLISTEK 1000 BALLAST V2.0 120/240 DE/SE



Environmental





ANDEN

Anden has been an innovator in the development of precise humidity control systems for commercial and residential applications since 1954. Trust us to deliver the reliable products and expert technical support that are critical to successful harvests. At capacities up to 300 pints per day and up to 500 cubic feet per minute of airflow, our dehumidifiers are the only products on the market specifically designed to pull moisture out of the air at lower temperatures.



COMPARE THE PERFORMANCE



Digital Control
Included with every unit



Accurate, digital sensor with convenient top or side mounting options.

External Digital Control
Optional



Position at crop height for critical monitoring and accuracy of RH control where it's needed most.



MODEL A70



MODEL A95



MODEL A130

	MODEL A70	MODEL A95	MODEL A130
Water removal @ 80°F/60% RH	70 pints/day	95 pints/day	130 pints/day
Efficiency @ 80°F/60% RH	4.4 pints/kWh	4.7 pints/kWh	6.1 pints/kWh
Airflow	200 CFM	265 CFM	310 CFM
Power (Watts @ 80°F/60% RH)	630	870	900
Supply voltage	120VAC, 1 Phase, 60Hz	120VAC, 1 Phase, 60Hz	120VAC, 1 Phase, 60Hz
Dimensions: (cabinet only)	12½" W x 12½" H x 25" L	12½" W x 14½" H x 27½" L	19½" W x 18¾" H x 30" L
Weight	56 lbs.	70 lbs.	113 lbs.
Air filter	Washable MERV 8	Washable MERV 8	Washable MERV 8
Power cord	8' 120VAC grounded plug	8' 120VAC grounded plug	8' 120VAC grounded plug
Warranty	5-YEAR WARRANTY	5-YEAR WARRANTY	5-YEAR WARRANTY
Hanging kit	Model 5660 18" W x 6½" H x 29½" Weight: 13 lbs. Working Load: 400 lbs.	Model 5660 18" W x 6½" H x 29½" Weight: 13 lbs. Working Load: 400 lbs.	Model A130 27" W x 10½" x 35" Weight: 18 lbs. Working Load: 400 lbs.



INDUSTRIAL GROW-OPTIMIZED DEHUMIDIFIERS

Anden AV-Series Dehumidifiers range from 210-310 pints per day of moisture removal. Components utilize materials designed for the most extreme conditions and demanding enterprises. Sensors and controls can be custom-configured for each facility. Anden AV-Series are recommended for the large, ultrahigh volume industrial facilities.



Balanced RH



Temperature



Air Circulation



Precise Control

PRODUCT #	DESCRIPTION
03097003	ANDEN A200V1 DEHUMIDIFIER HW IG
03097004	ANDEN A300V1 240V DEHUMIDIFIER HW IG
03097005	ANDEN A300V3 277V DEHUMIDIFIER HW IG
03097006	ANDEN 76 DIGITAL DEHUMIDIFIER CONTROL



MODEL A200V1



MODEL A300V1



MODEL A300V3

	MODEL A200V1	MODEL A300V1	MODEL A300V3
Water removal @ 80°F/60% RH	210 pints/day	300 pints/day	300 pints/day
Efficiency @ 80°F/60% RH	6.0 pints/kWh	4.6 pints/kWh	Coming Soon
Airflow	400 CFM	400 CFM	Coming Soon
Power (Watts @ 80°F/60% RH)	1400	3100	Coming Soon
Supply voltage	208/240VAC, 1 Phase, 60Hz	208/240VAC, 1 Phase, 60Hz	Coming Soon
Dimensions: (cabinet only)	28½" W x 18¾" H x 23" L	28½" W x 18¾" H x 23" L	28½" W x 18¾" H x 23" L
Weight	140 lbs.	140 lbs.	Coming Soon
Air filter	MERV 11 disposable	MERV 11 disposable	MERV 11 disposable
Power cord	10' 240VAC grounded plug	Hardwired	Hardwired
Warranty			
Hanging kit	Models A200 and A300 hanging brackets are built in	Models A200 and A300 hanging brackets are built in	Models A200 and A300 hanging brackets are built in

► FACT

Humidity spikes when lights are turned off.

► FACT

Dehumidifiers must achieve full capacity quickly and hold capacity while temperatures drop until lights are turned on.

Anden dehumidifiers utilize refrigeration technology designed for grow conditions.





EFFECTIVE, SAFE AND ECONOMICAL
BIO-PROTECTION FOR CANNABIS &
INDOOR CULTIVATION

AGRIAIR

High quality. American made products.

Since 1988, Omnitec Design Inc has been designing and manufacturing air purification equipment. Our equipment has become one of the industry's leading brands and the first choice for mold, asbestos, and odor abatement projects in commercial and residential premises, sanitation of patient rooms and hospital facilities, and in restoration and first response to natural disasters.

In 2014, in response to the needs of indoor growers, Omnitec created the line of Agriair® with an advanced technology, to address the overlooked importance of air quality and sanitation in indoor grow facilities. Like Omnitec Design's machines, Agriair® equipment is manufactured to the highest quality standards and performance to help indoor growers meet increasing compliance requirements for air quality and purity of product, and a healthy work environment.

All of our equipment is proudly manufactured in the USA, and tested by Nationally Recognized Testing Laboratories (NRTL) to ensure that the product in your hands is safe and reliable.



1000-3 AIR PURIFIER WITH IO TECHNOLOGY

Effective, Safe and Economical Bio-Protection for Cannabis & Indoor Cultivation

The Agriair® 1000-3 air purifier uses Ionic Oxidation (IO) technology to generate friendly oxidizer plasma which seeks and destroys odors at their source and bio-contaminants in indoor commercial cultivation facilities. Our energy efficient purifier produces and distributes oxidizer plasma naturally generated from humidity and oxygen in the surrounding area. The 1000-3 is sized to sanitize environments 3,000-10,000 cubic feet of flowering, drying and packaging rooms. It's portable, easy to install, scalable and ready to plug-in and go.

AAHPG1000-3 HO & AAHPG1000-3 HO-230	
Airflow	300 - 650 CFM*, variable speed blower
Power Requirements	115 VAC/60 Hz/3 amps; 230 VAC/50-60 Hz/1.6 amps
Recessed Controls	(2) ON/OFF generator switches, (2) generator ON lights, (2) hour meters, fan speed controller
Filtration	16"x24"x2" MERV 11 pleated filter; 16"x24"x1" pleated carbon filter
IO Generator Cell	(2) 14" Ionic Oxidation cell
Housing	aluminum powder coated housing with 12" outlet & (2) rubber handles
Size/Weight	14 W x 20"H x 27"L, 40 lbs.



PG-3 HO AIR PURIFIER WITH IO TECHNOLOGY

The Agriair® PG-3 HO air purifier produces and distributes eco-friendly oxidizer plasma that sanitizes air, surfaces and controls odors at their source, in 3,000-12,000 cubic feet of grow space. The oxidizer plasma provides bio-protection 24/7. This purifier is easy to install with any HVAC or air moving system and is scalable to any size operation.

AAHPG-3 HO & AAHPG-3 HO-230	
Airflow	300 - 2000 CFM from external fan
Power Requirements	115-230 VAC/50-60 Hz/0.4-0.2 amps
Recessed Controls	ON/OFF switch, (2) hour meters, (2) ON/OFF generator switches
Filtration	(2) 12"x12"x1" MERV-11 pleated filters, (2) 12"x12"x1" pleated carbon filters
PHI Generator Cell	(2) 14" Ionic Oxidation cell
Housing	aluminum housing with 12" inlet/outlet connections, (2) rubber handles
Size/Weight	8.5"D x 15.5"W x 27"H; 18 lbs.



CONFORMS TO UL STD 507
CERTIFIED TO CAN/CSA STD
C22.2 NO. 115-M1984

OMNIAIRE 600 NITRO

HEPA Air Filtration Machine

The OmniAire Nitro 600 a portable HEPA air scrubber with a variable speed motorized impeller featuring high suction capacity and air flow. It is used for removal of toxic mold, asbestos and lead dust during renovation and abatement projects, and for purifying air in commercial, factory sites and medical facilities. The Nitro can be used with a variety of filters such as HEPA 99.99%, MERV 15, GEO95 high capacity dust filter or an activated carbon filter. Units are safely stackable up to 3 high during operation, transportation, and storage.

OmniAire 600 Nitro	
Airflow*	200 - 600 CFM
Power Requirements	115VAC/60 Hz/2.4 Amp
Blower	motorized impeller with thermal overload
Recessed Controls	variable speed control; red power indicator light; amber change filter light; GFI protected outlet (8 Amp load max); 12 Amp breaker
Filtration	HEPA Filter 99.99% 0.3µ; MERV 9 primary/secondary filter Optional: OdorGuard 600 carbon web filter; MERV15 GEO95 filter
Housing	polyethylene; 10" inlet/outlet; soft rubber handle
Size/Weight	19"W x 19"H x 25"L; 36 lbs.

*Airflows based on blower manufacturer curves. Different filters may cause the flow to vary.



Labs and universities confirm the following results of Ionic Oxidation purifiers

AGRIAIR® PURIFIERS SEEK & DESTROY

- 99% surface bacteria, virus, and microbes
- 99% E-Coli and Salmonella
- 97% airborne bacteria and mold spores
- 85% odor and VOC reduction





fantech®

FANTECH

For more than 3 decades, Fantech has been researching, designing and bringing to market “Ventilation Solutions” that ensure better indoor air quality in the buildings where we work and live.

FG SERIES

- Speed-controllable
- Built-in thermal overload protection with automatic reset
- Can be installed in any position and outdoors
- Maintenance-free and reliable
- Mounting bracket and hardware included
- Five-year factory warranty
- UL Listed, CSA Certified, HVI Certified, ENERGY STAR®

The housing is manufactured from a two-piece stamped galvanized construction. The two halves are joined using Fantech’s unique folded seam closure, which gives the fan the first in class, air tight seal. Duct connected outdoor and wet room applications of the fan are possible due to the air tight casing. FG fans are equipped with backward-curved impeller blades and external rotor motors. With the motor in the airstream the fan provides the constant dissipation of heat buildup thus giving the fan first in class of longevity and reliability.



PRODUCT #	DESCRIPTION
03096000	FANTECH 4" C DUCT FAN- 170 CFM, 120V
03096001	FANTECH 6" C DUCT FAN, 483 CFM-120V
03096002	FANTECH 8" C DUCT FAN - 502 CFM,120V
03096003	FANTECH 10" C DUCT FAN - 589 CFM, 120V
03096004	FANTECH 12" C DUCT FAN - 940 CFM, 120V

FKD SERIES

- Mixed-flow impeller
- 100% Speed-controllable
- Integral thermal contacts
- Air stream temperatures up to 140 °

Fantech FKD direct drive, mixed flow fans blend the high air flow of axial fans with the higher pressure, non-overloading characteristics of backward curved impellers. An excellent choice for exhaust or supply applications where quieter performance and easy installation are important. Perfect for commercial and institutional structures such as offices, hospitals, beauty salons, veterinary clinics as well as residential applications such as kitchen range hood exhaust. The casing is manufactured from galvanized sheet metal. The Series have external rotor motors with a mixed flow impeller, which reduces the external dimensions of the fans. Brackets are supplied with the fans to make installation easier.



PRODUCT #	DESCRIPTION
03096011	FANTECH 8" IMF DUCT FAN - 836 CFM
03096012	FANTECH 10" IMF DUCT FAN - 1266 CFM
03096013	FANTECH 12" IMF DUCT FAN - 2016 CFM
03096014	FANTECH 14" IMF DUCT FAN - 2619 CFM
03096015	FANTECH 16" IMF DUCT FAN - 4274 CFM



FANTECH REVOLUTION STRATOS

The Fantech Revolution Stratos is an energy-efficient, in-line, mixed flow fan with a 115V AC external rotor motor. Air flow is increased using aerodynamically optimized impellers and guide vanes, all while producing lower decibels than most other fans on the market. The Stratos Fan can be installed in any position with the included mounting bracket.

FEATURES:

- Airflow up to 1,375 cfm
- Zero air leakage
- Extremely energy efficient operation
- Can be installed in any position

PRODUCT #	DESCRIPTION
03096005	FANTECH 6" STRATOS REVOLUTION AC-296 CFM
03096006	FANTECH 8" STRATOS REVOLUTION AC- 647 CFM
03096007	FANTECH 10" STRATOS REVOLUTION AC-1380 CF

PRODUCT #	DESCRIPTION
03096008	FANTECH 6" VECTOR REVOLUTION - 444 CFM
03096009	FANTECH 8" VECTOR REVOLUTION EC - 811 CFM
03096010	FANTECH 10" VECTOR REVOLUTION EC - 1237 CFM

FANTECH EPD SERIES

FEATURES:

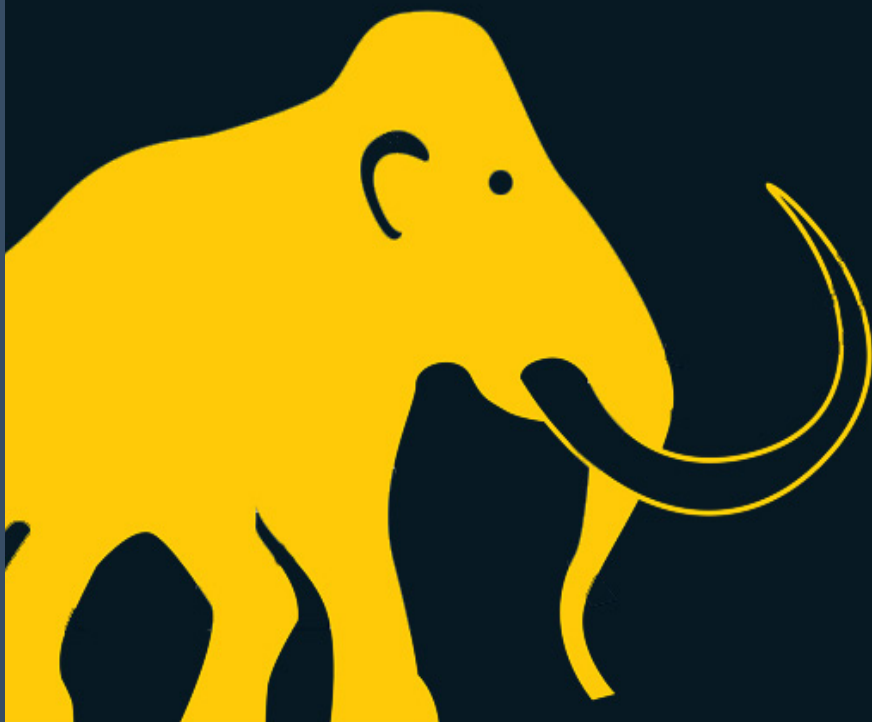
- Low temperature operation to 40°F
- Tough roto molded cabinet
- Electronic controls for precise, convenient setup and simple operation
- Digital hour meter for recording job times even when the unit is unplugged
- Integrated handles (upper/lower) allow for easy lifting job to job

PRODUCT #	DESCRIPTION
03096018	FANTECH 150 PINT DEHUMIDIFIER LG REFRIDG
03096019	FANTECH 180 PINT DEHUMIDIFIER S. REFRIDG
03096020	FANTECH 190 PINT DEHUMIDIFIER LG REFRIDG
03096021	FANTECH 250 PINT DEHUMIDIFIER S. REFRIDG



pioneers in mobile climate rooms

Pro | Classic | Lite | Elite
Dual | Propagator | Dryer
Accessories



MAMMOTH GROW TENTS

Mammoth grow tents offer all options possible to growers from the novice to the advanced.

Quality assured with dual stitching, with reflective and durable Mylar, strong framing with plastic protective cornering.

Easy assembly with interlocking tent options. Mammoth grow tents have been designed for growing all types of plants, even those that require specific conditions (Orchids, Aloe Vera, citrus plants, carnivorous or tropical plants). These indoor grow tents incorporate a hammered effect Mylar in the material which acts as a barrier to toxins generated by PVC and also has a reflectivity value of over 95%.

Whether you are a beginner or a more experienced gardener, Mammoth grow tents will bring you total satisfaction in knowing you can reproduce plants and control the environment in a portable environment.





MAMMOTH CLASSIC

A high quality tent for the hobby grower, this mid-range grow room has features normally associated with higher end tents.

- High light proofing (Level 1)
- Equipment tubes are strong enough to hold 20kg
- Large doors - easy to access and work in
- Various intakes and exhausts make setup flexible
- Straps and hooks for easy integration



MAMMOTH PRO

A high end range, ideal for the professional grower.

- High light proofing (Level 2)
- Polypropylene corners for maximum rigidity
- Equipment tubes that have 30kg load capacity
- Large doors - easy to access and work in
- Material is washable inside and out
- Straps and hooks for easy integration of equipment
- Light, easy-to-transport material and is easy to assemble



MAMMOTH ELITE

The ultimate in quality for the professional grower.

- Heavy duty frame, corners and fabric, with stainless steel / aluminium click system
- Dual multiple intake and extraction socks
- Equipment tubes that have a 75kg load capacity
- Wide easy access door, with jam proof / waterproof zipper. Waterproof floor
- Large doors - easy to access and work in
- Material is washable inside and out
- Modular: customize your own grow room by combining different Elites sizes - unique linkable panels - your shape, your size

PRODUCT #	DESCRIPTION
05300729	CLASSIC MICRO 1.3X1.3X2.6
05300730	CLASSIC 60 2X2X4.6
05300731	CLASSIC 90 3X3X5.3
05300732	CLASSIC 120 4X4X
05300733	CLASSIC 150 5X5X6.6

PRODUCT #	DESCRIPTION
05300708	PRO MICRO 1.3X1.3X2.6
05300700	PRO60 2X2X5.3
05300701	PRO90 3X3X6
05300702	PRO120 4X4X6.6
05300703	PRO150 5X5X6.6
05300704	PRO240 8X8X6.6
05300705	PRO300 10X10X6.6
05300706	PRO 240 WIDE 8X4X6.6
05300707	PRO300 WIDE 10X5X6.6

PRODUCT #	DESCRIPTION
05300709	ELITE MICRO HC
05300770	ELITE 480 16X8X7
05300771	ELITE 600L 20X10X17
05300772	ELITE HC 900L 15X30X8
05300773	ELITE HC 300L 5X10X8
05300776	ELITE HC 600L 10X20X8





MAMMOTH DUAL

The Mammoth Dual is the ultimate growing environment. Thanks to the large doors, the Mammoth Dual easily accessible and convenient to operate.

PRODUCT #	DESCRIPTION
05300750	MAMMOTH DUAL 90 3X3X6.3
05300751	MAMMOTH DUAL 120 4X4X7

MAMMOTH WEBIT

Adjustable Plant Support designed to fit the Pro Series tents Small fits Pro 60 - 90 Large Fits Pro 120 - 150.

PRODUCT #	DESCRIPTION
05300782	MAMMOTH WEB 60-100
05300783	MAMMOTH WEB 120-150

MAMMOTH DRYER

31" 5 Layer Dryer you can dry your yields in the very same Mammoth grow tents in which you grew those plants! The Mammoth DryIT is a 31" dryer that is powerful enough to dry large amounts of yields simultaneously. The Mammoth DryIT hangs from the roof crossbars inside the DarkRoom. The DryIT is also compatible with the DarkDryer system, which when used in tandem team up to create one super-efficient and high-performance drying system.

PRODUCT #	DESCRIPTION
05300785	MAMMOTH DRY 45
05300786	MAMMOTH DRY 80
05300780	MAMMOTH DRYER 90 3X3X6

MAMMOTH S HOOKS

Mammoth S Hooks 16mm 5 Pack
5 "S" hooks Mammoth Hook with a diameter of 23 mm. Ideal for hanging objects and power cables in the grow room. Great way to Hang Accessories in your Tent

PRODUCT #	DESCRIPTION
05300789	MAMMOTH S HOOK 16MM (5PC)
05300790	MAMMOTH S HOOK 23MM (5PC)
05300788	MAMMOTH STRAP (2PC)
05300787	MAMMOTH ADJUST (2PC)
05300792	MAMMOTH HYDRO/THERMO METER



MAMMOTH PROPAGATOR

The Mammoth Propagator is a small propagation and germination grow box, ideal for keeping mother plants, germinate seeds, cutting propagation and for the small plants growth stage. Small and reflective, everything you need for your cuttings and seedlings. Lined with 190D Mylar (CRX 95%) material at a very high coefficient of light refraction. Provided with all the necessary tools for a professional growing, with ventilation diagonal window and metal strong structure to support lighting and filters smells (up to 20kg).

PRODUCT #	DESCRIPTION
05300781	MAMMOTH PROPAGATOR 3X2X2
05300791	MAMMOTH PROPAGATOR 125 4X2X4



MAMMOTH GAVITA G1

The only tent made for Gavita DE! Now run one Gavita DE 1000W fixture in a tent with matching footprint at 3.6 ft x 5.9 ft x 7.88 ft. Rugged exterior, heavy duty 22mm steel frame, 2 front doors, 3 side windows, 95% reflective mylar coating 600D lightproof canvas, waterproof built in tray. Use with New Gavita M Style SR Small Room Reflector insert with Gavita DE fixtures for optimized growth.

PRODUCT #	DESCRIPTION
05300760	MAMMOTH GAVITA TENT G1 (3.6X5.9X7.9)



MAMMOTH GAVITA G2

The only tent made for Gavita DE! Now run TWO Gavita DE 1000W fixtures in a tent with a matching footprint at 5.91 ft x 7.22 ft x 7.88 ft. Rugged exterior, Heavy duty 22mm steel frame, 2 front doors, 2 side doors, 3 side windows, 95% reflective mylar coating 600D lightproof canvas, waterproof built in tray. Use with New Gavita M Style SR Small Room Reflector insert with Gavita DE fixtures for optimized growth

PRODUCT #	DESCRIPTION
05300761	MAMMOTH GAVITA TENT G2 (7.2X5.9X7.9)



MAMMOTH GAVITA G1 & G2 ADDITIONAL FEATURES

- Deep Penetration of Light - Mammoth Elite reflective walls and tent shape maximize light in all directions
- FootPrint - tent matches the Gavita Light footprint
- More Ports! - Port on front allows access to Gavita Master Controller
- Never Overheat - at almost 8 feet tall this tent keeps its cool
- 100% Waterproof Flooring - built in water tray
- Heavy duty frame with 22 mm steel poles
- Rugged, light proof canvas exterior and reflective mylar interior





TURBOKLONE

FEATURES:

- Longer lasting, more durable Polyethylene Collars
- Reservoir is stronger and easier to clean
- Fan system provides constant oxygen and keeps temperatures optimal for rooting
- More Klone sites in the same dimensional footprint as other systems on the market.
- Why settle for less when you can have more... Klone sites that is!
- TurboKlone gives you up to 60% more sites than other systems of similar size on the market.



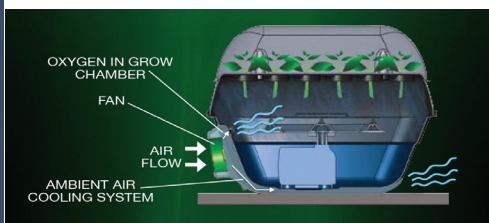
The fan system provides constant oxygen to the growing chamber and, most importantly, combats high temperatures by circulating cool air throughout the unit.

The innovative fan system fits like a glove on the side of the reservoir—keeping the unit free from dangling parts and tangling cords like other systems on the market.

Ahead of the Curve

While other cloning machines are designed with straight lines and angles that resemble storage containers and planter boxes, the TurboKlone has sleek, rounded edges and curved walls that give it greater strength and resilience from external and internal forces.

And those curves aren't just for good looks! Its sleek, rounded design makes cleaning the TurboKlone a breeze! You don't have to worry about bacteria hanging around in tight corners.



PRODUCT #	DESCRIPTION	PRODUCT #	DESCRIPTION
05260046	TURBOKLONE SYSTEM - 24 SITE	05260056	TURBOKLONE MANIFOLD - T48
05260047	TURBOKLONE DOME - 24 SITE	05260057	TURBOKLONE MANIFOLD - T96
05260051	TURBOKLONE SYSTEM - 48 SITE	05260058	TURBOKLONE MANIFOLD - T144
05260052	TURBOKLONE DOME - 48 SITE	05260059	TURBOKLONE SHROUD WITHOUT FAN
05260053	TURBOKLONE SYSTEM - 96 SITE	05260060	TURBOKLONE SHROUD WITHOUT FAN
05260054	TURBOKLONE DOME - 96 SITE	05260061	TURBOKLONE PUMP - T48 & T96
05260055	TURBOKLONE SYSTEM - 144 SITE	05260062	TURBOKLONE PUMP - T144
05260045	TURBOKLONE DOME - 144 SITE	05260063	TURBOKLONE REPLACEMENT SPRAY HEADS
05260050	TURBOKLONE COLLARS (PACK OF 52)	05260064	TURBOKLONE REPLACEMENT FAN
05260068	TURBOKLONE T96 SITE & DOME		
05260069	TURBOKLONE T48 SITE & DOME		



TURBOKLONE ELITE

The revolution continues with the even larger T96. All the great features you've come to love – but now in a larger system for ultimate growers.

The TurboKlone Elite gives you a stronger, longer-lasting product thanks to its smart design and use of innovative technology.

The Elite Series takes all the fan favorite features of the Black Label models and adds:

- Grey ABS plastic shell - less absorption of heat from lights and greater reflective properties to promote higher levels of photosynthesis
- Alpha/numeric lid to categorize plant species
- Colored klone collars to further differentiate plant species
- Optional Humidity Dome with integrated vents (the humidity level within the dome can be adjusted)
- Larger fan introduces more oxygen to the grow chamber and provides a greater cooling effect)

The Elite Series is available in the following model sizes: T96 & T144 (humidity domes will be optional)

PRODUCT #	DESCRIPTION
05260070	TURBOKLONE ELITE 96 SITE SYSTEM
05260071	TURBOKLONE ELITE96D SITE & DOME
05260072	TURBOKLONE ELITE144 SITE
05260073	TURBOKLONE ELITE 144D SYSTEM& DOME
05260074	TURBOKLONE ELITE COLLARS 52 PACK
05260075	TURBOKLONE 144 ELITE PUMP
05260076	TURBOKLONE 144 ELITE DOME ONLY





RAMBRIDGE™

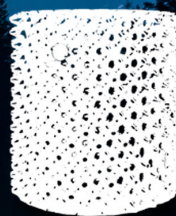
growing *with* the future



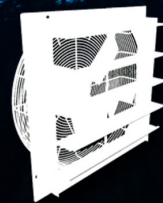
Lighting



Irrigation



Gardening
Supplies



Ventilation



Grow
Media



Nutrients &
Additives



Grow
Tents

Rambridge Wholesale International | 1-800-265-4769 | www.rambridge.com



Air-Pot

For plants to thrive they need healthy roots, but standard pots deform roots which seriously compromises the plant. The Air-Pot system does the opposite, actively enhancing the plant, by making it develop a mass of healthy fibrous roots. This maximises its ability to absorb nutrients and water, leading to a healthier, faster growing plant. Nurseries in many countries are reaping the benefits of the Air-Pot system, from the small to the very large. The Air-Pot system is truly unique in its ability to containerise any size.

COST BENEFITS:

Using the Air-Pot® isn't just a choice of container – it is a decision to revolutionise the whole way that you grow. Compared to normal plant containers the Air-Pot® is not cheap, but the massive benefits gained from the superior plants that the Air-Pot system produces, far outweigh the initial investment.

- Air-Pot® grown plants are healthy plants and healthy plants sell quicker and for higher prices.
- Air-Pot® grown plants grow faster leading to faster turnover of stock, faster turnover of cash, and bigger profits.
- Air-Pot® grown plants are more resistant to disease, so there are less losses, and there is less expenditure on fungicides and pesticides.
- Air-Pot® grown plants need repotting less frequently, meaning less labour costs.
- The Air-Pot system gives you more flexibility. Plants can stay in the Air-Pot® for an extra season rather than be sold off at a discounted price. Or you can pot up for a more valuable plant next season.
- Air-Pot® grown plants establish better when planted out, so there are no losses to replace and happy customers return to order more.

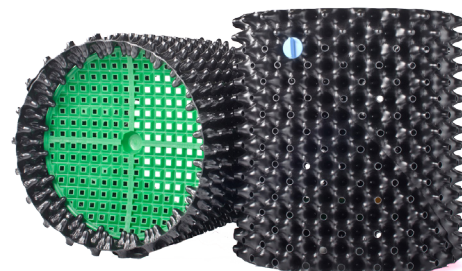
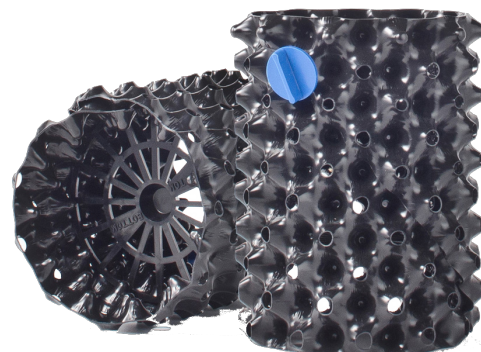


THE EXPERTS' CHOICE

Air-Pot Size Descriptions

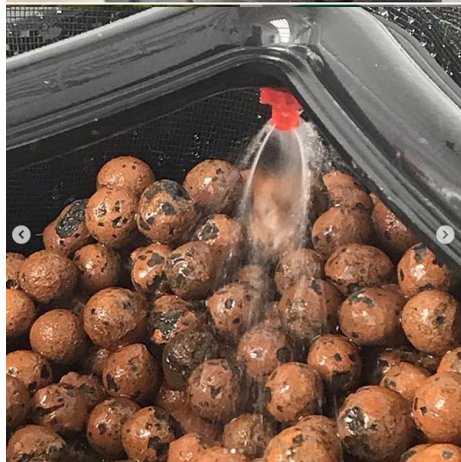
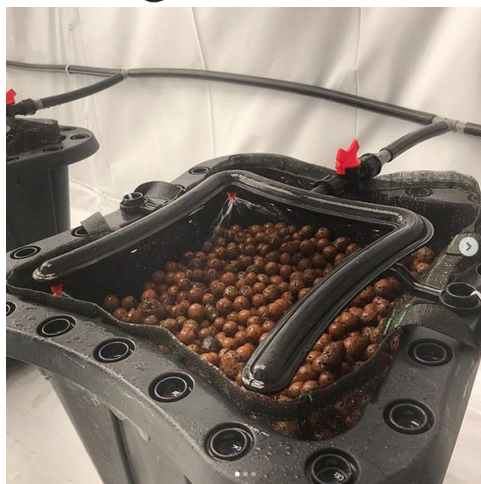
Base Color	Litres	Nursery Equiv.	Outside Wall Height (inches)	Outside Diameter (inches)	Row Overlap	Water Reservoir (closed cones)	Volume (inches) (H x D)	Recommended applications.
Air-Pot Hydro KITS - (includes wall, base, fixing(s))								
<i>Small Cones - 1 cone reservoir - 1 small fixing - base placed up the wall 1 row/59" (15mm) - volume based on inside measurement</i>								
Prop Cell	1.02	Prop	5.7	4.75	2	1	4.75 x	Ideal for germinating seeds and cuttings.
<i>Large Cones - 2 cone reservoir - 1 large fixing - base placed up the wall 3 rows/2.36" (60mm) - volume based on inside measurement</i>								
No. 1	3.1	1 gal	8.5	7.5	2	2	6.1 x 6	Great for cuttings & seedlings, full term growth & bloom.
No. 2	4.7	2 gal	8.5	9	2	2	6.1 x 7	Great for cuttings & seedlings, full term growth & bloom.
<i>Large Cones - 2 cone reservoir - 2 large fixings - base placed up the wall 3 rows/2.36" (60mm) - volume based on inside measurement</i>								
No. 3	9.2	3 gal	10.8	10.5	2	2	8.5 x 9	Will accommodate a 2' to 6' plant through vegetation and full
No. 5	14.6	5 gal	12.4	11.5	2	2	10 x 10	Great for full term growth up to 6', also for long term growing.
No. 7	22	7 gal	13.2	13.5	4	2	10.8 x	Great for full term growth up to 6', also for long term growing.
<i>Large Cones - 3 cone reservoir - 3 large fixings - base placed up the wall 3 rows/2.36" (60mm) - volume based on inside measurement</i>								
No. 10	30.9	10 gal	16.5	16.5	4	3	10 x 15	Great for indoor and outdoor growth up to 8', also for long term
No. 15	45.4	15 gal	16.5	16.5	4	3	14.8 x	Great for indoor and outdoor growth up to 8', also for long term

PRODUCT #	DESCRIPTION
05300407	AIR POT - PROPAGATOR- 25 PER BOX
05300400	AIR POT NO. 1 (1 GALLON) - 25 PER BOX
05300402	AIR POT NO. 3 (3 GALLON) - 25 PER BOX
05300403	AIR POT NO. 5 (5 GALLON) - 12 PER BOX
05300404	AIR POT NO. 7 (7 GALLON) - 12 PER BOX
05300406	AIR POT NO. 15 (15 GALLON) - 8 PER BOX



THE BUCKET COMPANY- EZ-PZ PLANTER

The Ez- Pz Planter™ works with all growing styles. Simply stated, the Ez- Pz Planter™ is a modern day solution for today's rapidly growing agriculture industry. The Ez-Pz Planter™ is that it is a Universal System that can be used in countless applications from small grow tents to large commercial grows .



- **100% EXPANDABLE AND UNIVERSAL.**
Whether you need 1 or 1,000's, the Ez-Pz Planter™ Growing system is for you. It works with all types of growing mediums and styles
- **SOIL BASED MEDIUMS (SOIL, COCO, ETC.)**
Our unique system can be set for "Top Feed Drain to Waste" Style growing. You can use PVC to set up a closed direct drain system, a gutter system to have a more open fluid drain system or you can put them directly on a flood table. Set your pumps on a timer or hand feed on your schedule
- **HYDROPONIC GROWING (HYDROCORN, COCO, ETC.)**
You can connect PVC to our drainage system and set it to recirculate back to a reservoir leaving your pumps running without a timer and having constant water flow in a close loop traditional hydro-style growing system.

FEATURES AND BENEFITS

- **3° "V" BOTTOM DESIGN**
Let gravity and our "V" Bottom design do all the work and keep your plants properly drained. Controlling your humidity levels is one of the most important parts of growing. This design helps save time and electricity.
- **PATENT PENDING AIR CHANNELS**
Our Patent Pending Air Channels create a steady flow of oxygen to your roots keeping them healthy and helping you to eliminate root rot
- **360 DEGREES OF A -W-E-S-O-M-E**
Our unique Feeding Manifold comes with Four Optional 360 Degree Sprayers. The design completely covers your media to ensure that your nutrients and water are spread evenly. Use it with or without sprayers, Its up to you!
- **THE EZ-PZ FEEDER SYSTEM™**
This feeder system truly is universal, works with nearly all existing piping and all fittings can be easily purchased at most hardware stores. Individual Shut-Off Valve allows you to decide when to feed a specific plant.
- **FULLY CUSTOMIZABLE SPREADERS**
Our Ez-Pz Branch Spreader Arms™ snap onto the outside of your planter keeping stakes out of your roots and eliminating cross contamination. You have the freedom of setting them up anywhere on the planter in any shape or design
- **NO TOOLS REQUIRED!**
Designed to make your set up and take down more efficient, everything snaps on and off easily. Whether you are cleaning your irrigation system or adjusting your spreaders you won't be fumbling around looking for tools
- **ADD OXYGEN TO YOUR ROOTS!**
The Ez-PzPlanter™ is designed to drain your medium quickly and effectively eliminating root rot. the Screen Pot/insert does not retain water/nutrients and creates oxygen bubbles. The closed drain system reduces humidity in your room.

Available in 1.2, 3 or 10 gallon buckets.

THE BUCKET COMPANY- THE MEDICAL PLANTER

The Medical Planter™ is the newest addition to the Ez- Pz Planter™ family. It has all the features of the traditional Ez- Pz Planter™ with the added benefit of Medical Grade FDA and EPA Approved plastics making it Anti -Mold and Anti-Algae. A must have in and truly commercial growing operation.

The Anti-Microbial plastic used in the Medical Planter™ will not allow E-Coli, gray mold, black mold, algae and more from growing on your planter helping you keep your grow operations clean and healthy.

Available in 1.2, 3 or 10 gallon buckets.

THE Bucket+Company®



PRODUCT #	DESCRIPTION
05300900	TBC 10 GALLON KIT ANTI-MICROBIAL (4 BUCKETS/ KIT)
05300901	TBC 10 GALLON KIT - BLACK (4 BUCKETS/ KIT)
05300902	TBC 3 GALLON KIT - ANTI-MICROBIAL (6 BUCKETS/ KIT)
05300903	TBC 3 GALLON KIT - BLACK (6 BUCKETS/ KIT)
05300904	TBC 1.2 GALLON KIT - ANTI-MICROBIAL (12 BUCKETS/ KIT)
05300905	TBC 1.2 GALLON KIT - BLACK (12 BUCKETS/ KIT)



FDA & EPA APPROVED PLASTIC



ELIMINATE

- ✓ E-COLI
- ✓ MOLD
- ✓ ALGAE



NO MORE

- ✓ MANUAL FEEDING
- ✓ WET VAC SPILLS
- ✓ DRAIN PANS

UNIVERSAL APPLICATION WORKS WITH
ALL TYPES OF MEDIUM



THE Medical+Planter™





Gardening Supplies





PRO
CHIKAMASA

SINCE 1910

CHIKAMASA

Chikamasa CO. is a family owned pruner and garden scissor company located in Osaka, Japan. Chikamasa scissors hand crafted in Japan are the highest quality garden scissor available to trimmers and pruners. If your product is grapes, herbs or any agriculture, you are need of an efficient harvest tool that will help prevent wrist aches and pain caused by conventional garden scissors. Chikamasa is designed with bonsai sculpting in mind. Chikamasa has developed the perfect scissor for specialty gardeners who work long hours with attention to detail.

100 years ago founder SHOJIRO WADA (grandfather of current president) followed the family business of manufacturing flower shears when he was 15 years old at Zaimoku-cho, Sakai, Osaka. The idea was to produce high quality products. Chikamasa has more than 80 types original shears and scissors for agriculture use, gardening, handicrafts and office works etc. They have been developing useful products for users. Their products are supported overwhelmingly by professionals and amateurs.

CHIKAMASA B220S

Total Length: 130mm
Blade Length: 33mm
Weight: 42g
Blade: high-quality carbon steel
Grip: elastomer resin

PRODUCT #	DESCRIPTION
05300614	CHIKAMASA B220S

CHIKAMASA PSA-G8 CARBON

Total Length: 210mm
Blade Length: 52mm
Weight: 255g
Blade: high-quality carbon steel upper blade / high-quality fluorine coating under blade / hard-chrome plating
Handle: die-cast aluminium

PRODUCT #	DESCRIPTION
05300610	CHIKAMASA PSA-G8 CARBON

BOX QUANTITY: 6

CHIKAMASA B500SF

Total Length: 155mm
Blade Length: 35mm
Weight: 42g
Blade: high-quality stainless steel / fluorine coating
Grip: elastomer

PRODUCT #	DESCRIPTION
05300606	CHIKAMASA B500SF SS/ FLUORINE COATING

BOX QUANTITY: 6



www.chikamasa.co.jp





CHIKAMASA B300

Total Length: 157mm
 Blade Length: 35mm
 Weight: 47g
 Blade: high-quality carbon steel
 Grip: ABS



PRO

CHIKAMASA

SINCE 1910

PRODUCT #	DESCRIPTION
05300600	CHIKAMASA B-300 CARBON STEEL

BOX QUANTITY: 6



CHIKAMASA B300S

Total Length: 157mm
 Blade Length: 35mm
 Weight: 47g
 Blade: high-quality stainless steel
 Grip: ABS

PRODUCT #	DESCRIPTION
05300601	CHIKAMASA B-300S STAINLESS STEEL

BOX QUANTITY: 6



CHIKAMASA B300SF

The Chikamasa B-300SF is yet another creation from Chikamasa Japan's quality craftsmanship. Stainless steel coated with sap resistant Fluorine, the B300SF cuts with ease and efficacy.

Total Length: 157mm
 Blade Length: 35mm
 Weight: 47g
 Blade: high-quality stainless steel / fluorine coating
 Grip: ABS

PRODUCT #	DESCRIPTION
05300602	CHIKAMASA B-300SF STAINLESS STEEL / FLUORINE COATING

BOX QUANTITY: 6



CHIKAMASA B500H

Total Length: 155mm
 Blade Length: 35mm
 Weight: 42g
 Blade: high-quality carbon steel
 Grip: ABS

PRODUCT #	DESCRIPTION
05300603	CHIKAMASA B-500H CARBON STEEL

BOX QUANTITY: 6



CHIKAMASA B-500S

Total Length: 155mm
Blade Length: 35mm
Weight: 42g
Blade: high-quality stainless steel
Grip: elastomer

PRODUCT #	DESCRIPTION
05300604	CHIKAMASA B-500S STAINLESS STEEL

BOX QUANTITY: 6

CHIKAMASA B-500SKF

Total Length: 155mm
Blade Length: 35mm
Weight: 42g
Blade: high-quality stainless steel / fluorine coating
Grip: elastomer

PRODUCT #	DESCRIPTION
05300608	CHIKAMASA B-500SKF ANTI-BACTERIAL

BOX QUANTITY: 6

CHIKAMASA B-500SL

Total Length: 155mm
Blade Length: 35mm
Weight: 42g
Blade: high-quality stainless steel
Grip: elastomer

PRODUCT #	DESCRIPTION
05300605	CHIKAMASA B-500SL STAINLESS STEEL

BOX QUANTITY: 6

CHIKAMASA B-500SLF

Total Length: 155mm
Blade Length: 35mm
Weight: 42g
Blade: high-quality stainless steel / fluorine coating
Grip: elastomer

PRODUCT #	DESCRIPTION
05300607	CHIKAMASA B-500SLF SS/ FLUORINE COATING

BOX QUANTITY: 6





CHIKAMASA CRI-360 SFW (WITH WIRE CUTTING GROOVE)

If you are looking for the perfect snip that will last you a life-time, consider the CRI360 for a sharp tip to pick a flower for your loved one or some fresh herbs from your garden. Equipped with a unique wire cutting groove to snip thin plant wire without damaging the scissors. The CRI360 series are ideal for wet trimming, cloning, de-leafing, as well as general harvest plant preparation.

Total Length: 160mm

Blade Length: 38mm

Blade: stainless steel

PRODUCT #	DESCRIPTION
05300612	CHIKAMASA CRI-360SFW STAINLESS STEEL



CHIKAMASA CRI-550 SRF (CURVED BLADE SAP RESISTANT)

With ergonomic comfort of the curved Chikamasa scissor, the NEW CRI550! Made from the highest quality stainless steel, this scissor offers a true curved blade! The CRI550 from Chikamasa features the innovative Fluorine Coating, a sap resistant layer, which prevents buildup on the scissors blades. This means longer use of scissors between cleanings, to allow for more proficiency for even the most elite user.

Total Length: 157mm

Blade Length: 35mm

Weight: 47g

Blade: high-quality stainless steel / fluorine coating

Grip: ABS

PRODUCT #	DESCRIPTION
05300611	CHIKAMASA CRI-550SRF STAINLESS STEEL / FLUORINE COATING

BOX QUANTITY: 6

CHIKAMASA T550

These unique and durable torsion spring loaded Chikamasa trim scissors boast a sharper point, as well as a lasting stainless steel blades. Equipped with a medium tension torsion spring, the T550 will outlast and out-perform cheaper traditional spring loaded trim scissors.

Total Length: 185mm

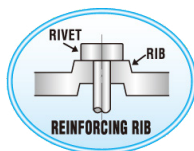
Blade Length: 48mm

Weight: 105g

Blade: high-quality carbon steel

Grip: steel plate / non slip coating

PRODUCT #	DESCRIPTION
05300609	CHIKAMASA T-550 CARBON STEEL
05300613	CHIKAMASA T-550 CARBON STEEL



CHIKAMASA PST-8

PST-8 blade makes sharp cut and the reinforcing rib is given near the rivet to enhance strength

Total Length: 190mm

Blade Length: 45mm

Weight: 150g

Blade: high-quality carbon steel

PRODUCT #	DESCRIPTION
05300615	CHIKAMASA PST-8



Hydroponics/ Irrigation

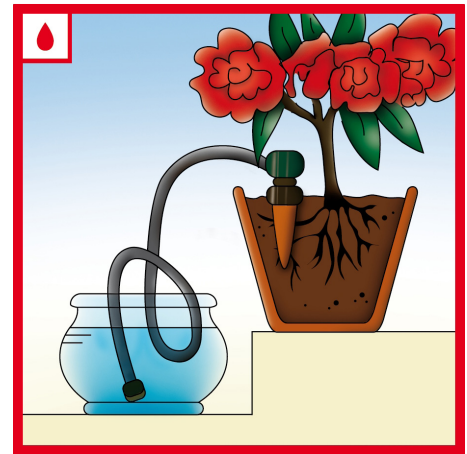
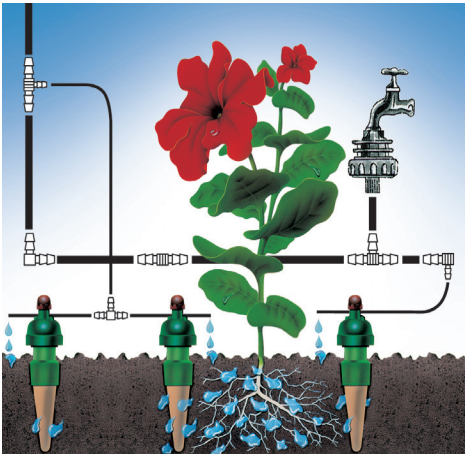




TROPF BLUMAT (Drip Irrigation Systems)

The Tropf-Blumat (Drip-Blumat) is a sensor that supplies plants with drips of water via thin tubing. As the soil dries its natural suction power triggers the opening of the Tropf Blumat allowing the water to flow. When the soil is sufficiently moist, the Tropf Blumat automatically stops. The system functions fully automatically. Every plant, every container or group of plants requires at least 1 Tropf-Blumat adjusted to the individual needs of the plant. Larger containers or surfaces require longer or more than one sensor. All Tropf-Blumats are connected using one supply tube, this allows for flexibility in the layout and is changeable at any time.

- Automatically waters individual plants and only when needed
- Connects directly to your hose tap or rain barrel
- Easily installed with a pair of scissors
- Inexpensive and works for years
- Ideal for small or larger grow areas



PRODUCT #	DESCRIPTION	PRODUCT #	DESCRIPTION
02060225	TROPF-BLUMAT PRESSURE REDUCER	02060210	TROPF-BLUMAT (50/BOX) C/W TEE FITTINGS
02060230	TROPF-BLUMAT END PIECE	02060215	BLUMAT JR. (BOX OF 25)
02060249	TROPF-BLUMAT 8MM FEEDLINE TEE	02060216	BLUMAT JR. 3 PACK
02060250	TROPF-BLUMAT TEE (3 PKG)	02060211	TROPF-BLUMAT MAXI
02060251	TROPF-BLUMAT HOSE COUPLER (3 PKG)	02060220	PATIO & BALCONY SET C/W 12 TROPF BLUMATS, HOSE & FITTINGS
02060252	TROPF-BLUMAT ELBOW (3 PKG)	02050167	TROPF FEEDLINE 8MM - 100M ROLL
02060253	TROPF MINI-BRANCH & DRIP TUBE (3 PKG)	02060222	TROPF-BLUMAT 10M SET
02060254	TROPF HOSE TEE/END PIECE (2 PKG)		
02060255	TROPF SHUT OFF VALVE		
02060256	TROPF GARDEN DRIPPER (10 PKG)		
02060257	TROPF-BLUMAT SUPPORTS (10 PKG)		
02060258	TROPF-BLUMAT THRU-HULL		
02050168	TROPF DRIPLINE 30M ROLL		



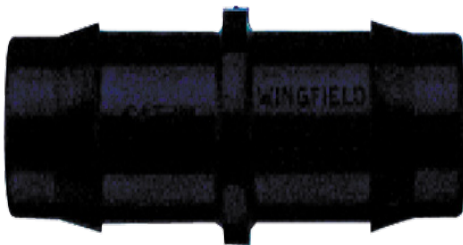
PHILMAC LARGE BORE HOSE FITTINGS

Our fittings are designed with an extra large bore so nutrient can flow more easily. The single barb and thin edges ensure that the hose stays on and conforms to give a smooth contour to the inside of the junction between the hose and the fitting.



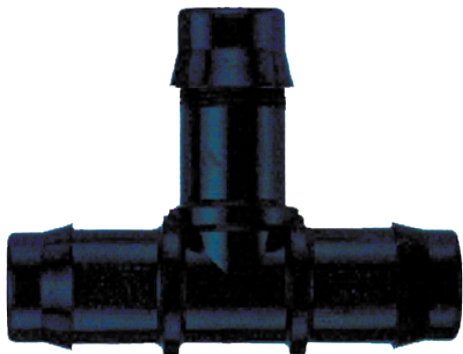
ELBOW BARB- 25 PER BAG

PRODUCT #	DESCRIPTION
02033801	3/8" ELBOW BARB
02031201	1/2" ELBOW BARB
02035801	5/8" ELBOW BARB
02033401	3/4" ELBOW BARB
02031001	1" ELBOW BARB
02032501	1 1/4" ELBOW BARB



COUPLER BARB- 25 PER BAG

PRODUCT #	DESCRIPTION
02033803	3/8" COUPLER BARB
02031203	1/2" COUPLER BARB
02035803	5/8" COUPLER BARB
02033403	3/4" COUPLER BARB
02031003	1" COUPLER BARB



TEE BARB- 25 PER BAG

PRODUCT #	DESCRIPTION
02033802	3/8" TEE BARB
02031202	1/2" TEE BARB
02065802	5/8" TEE BARB
02033402	3/4" TEE BARB
02031002	1" TEE BARB

PRODUCT #	DESCRIPTION
02032502	1 1/4" TEE BARB
02031262	1/2X1/2 X3/4" TEE BARB
02033462	3/4X3/4X1/2" TEE BARB
02032508	1 1/4X 1 1/4 X 3/4" TEE BARB



END PLUG BARB- 25 PER BAG

PRODUCT #	DESCRIPTION
02033804	3/8" END PLUG BARB
02031204	1/2" END PLUG BARB
02035804	5/8" END PLUG BARB
02033404	3/4" END PLUG BARB
02031004	1" END PLUG BARB
02032503	1 1/4" END PLUG BARB



HOSE END PLUG BARB- 100 PER BAG

PRODUCT #	DESCRIPTION	PRODUCT #	DESCRIPTION
02033805	3/8" FEMALE HOSE END PLUG BARB	02035805	5/8" FEMALE HOSE END PLUG BARB
02033806	5/8" MALE HOSE END PLUG BARB	02035806	5/8" MALE HOSE END PLUG BARB
02031205	1/2" FEMALE HOSE END PLUG BARB	02033449	3/4" FEMALE HOSE END PLUG BARB
02031206	1/2" MALE HOSE END PLUG BARB	02033453	3/4" MALE HOSE END PLUG BARB



BALL VALVE BARB- 20 PER BAG

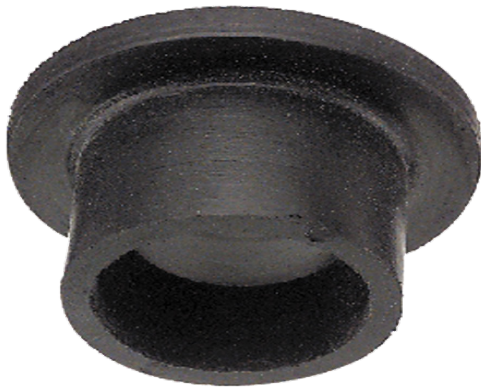
PRODUCT #	DESCRIPTION
02033860	3/8" BALL VALVE BARB
02031260	1/2" BALL VALVE BARB
02035860	5/8" BALL VALVE BARB
02033452	3/4" BALL VALVE BARB
02031005	1" BALL VALVE BARB



CROSS BARB- 25 PER BAG

PRODUCT #	DESCRIPTION
02031207	1/2" CROSS BARB





GROMMET & LARGE BORE INSERTS- 50 PER BAG

PRODUCT #	DESCRIPTION	PRODUCT #	DESCRIPTION
02030450	GROMMET 5/16" (8 MM)	02030476	GROMMET INSERT 3/4/3/4"
02030451	GROMMET 1/2" (13 MM)	02030477	GROMMET INSERT 3/4/1 1/4"
02030452	GROMMET 5/8" (16 MM)	02030478	GROMMET INSERT 5/8-5/8"
02030453	GROMMET 3/4" (19 MM)		

DRAIN FITTINGS

Our drain fittings are made from high impact resistant PVC. A quality product and good value for your customers. Washers sold seperately.



DRAIN FITTING- 48 PER BAG

PRODUCT #	DESCRIPTION
02035850	5/8" DRAIN FITTING
02033450	3/4" DRAIN FITTING
02032550	1 1/4" DRAIN FITTING

DRAIN WASHER- 100 PER BAG

PRODUCT #	DESCRIPTION
02033451	5/8- 3/4" DRAIN WASHER
02032551	1 1/8 - 1/ 1/4" DRAIN WASHER



DRAIN/ SPLASH GUARD- 48 PER BAG

PRODUCT #	DESCRIPTION
02033457	3/4" DRAIN/ SPLASH GUARD

DRIPLINE FITTINGS- VALVES, COUPLERS & SHEARS

The Dripline Valve is a very high quality needle valve offering infinite adjustment. Use it for adjusting airflow to airstones. Threaded couplers are the answer for trouble free drip or air connections. The self tapping thread ensures a positive seal. Threaded couplers can be installed in poly hose using the Orange Punch Wrench to both create the hole and twist in the coupler. Threaded couplers can be installed in PVC pipe, buckets and flood tables. The Dripline Stake "S6" accepts hoses (1/8 to 3/8"), easily checks if water is flowing and doesn't restrict flow.

GOOF PLUG- 100 PER BAG

PRODUCT #	DESCRIPTION
02060100	DUAL GOOF PLUG 1/8-1/4"



COUPLERS- 100 PER BAG

PRODUCT #	DESCRIPTION
02060110	DRIPLINE COUPLER 1/8" BARB ON BOTH ENDS
02060113	1/4" THREADED COUPLER WITH BARB
02060114	1/4" THREADED DRIP COUPLER (BOTH ENDS)
02060115	DRIPLINE COUPLER 1/4" BARB ON BOTH ENDS



FLOW VALVE- 50 PER BAG

PRODUCT #	DESCRIPTION
02060112	DRIPLINE FLOW VALVE 1/8-1/4" THREADED END



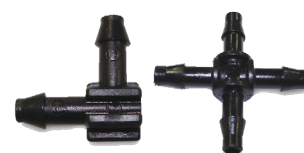
DRIPLINE TEE

PRODUCT #	DESCRIPTION
02060120	DRIPLINE TEE- 100 PER BAG
02060121	1/4" DRIPLINE TEE- 50 PER BAG



ELBOW & CROSS BARB- 50 PER BAG

PRODUCT #	DESCRIPTION
02060122	1/4" ELBOW BARB
02060123	1/4" CROSS BARB



SPRAY JET- 100 PER BAG

PRODUCT #	DESCRIPTION
02060170	SPRAY JET 360 - 1/4"





DRIPLINE SPEAR & STAKE- 100 PER BAG

PRODUCT #	DESCRIPTION
02060135	DRIPLINE "S6" STAKE
02060130	DRIPLINE SPEAR



DRIPLINE EMITTERS- 100 PER BAG

PRODUCT #	DESCRIPTION
02060140	DRIPLINE EMITTER GREY 1.2 GPH / 2 LPH
02060150	DRIPLINE EMITTER BLACK 1 GPH / 4 LPH
02060160	DRIPLINE EMITTER GREEN 2 GPH / 8 LPH



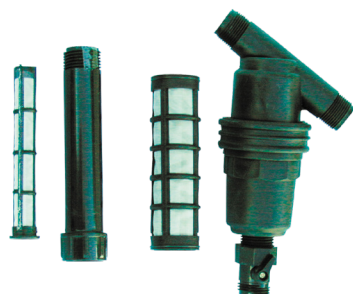
PUNCH WRENCH- 25 PER BAG

PRODUCT #	DESCRIPTION
02060201	ORANGE PUNCH WRENCH



RESERVOIR FLOATS

PRODUCT #	DESCRIPTION
02030410	FLOAT ASSEMBLY- 50 PRE BAG
02030411	FLOAT ASSEMBLY WASHER - 100 PER BAG



PARTICLE FILTERS

PRODUCT #	DESCRIPTION
02070100	PARTICLE FILTER, 7GPM, MESH SCREEN
02070110	REPLACEMENT PARTICLE FILTER SCREEN MESH



SUPER FLEX HOSE

PRODUCT #	DESCRIPTION
02050240	5/8" FLEXIBLE HOSE
02050245	3/4" FLEXIBLE HOSE
02050250	1 1/8" FLEXIBLE HOSE
02050255	1 1/4" FLEXIBLE HOSE

MEASURING SYRINGE

PRODUCT #	DESCRIPTION
03130020	MEASURING SYRINGE



TAP 3/4 WHITE 6 GAL

PRODUCT #	DESCRIPTION
02033463	TAP 3/4 WHITE 6 GAL



Blumat Digital Moisture Meter



At the touch of a button the professional moisture sensor shows you how thirsty your plants are and gives you 100% certainty that you're watering them properly. For, in the case of large pots, the soil's moisture content

cannot be assessed visually. The Tropf Blumat Digital Moisture Meter displays the suction power the roots need to absorb water.

Fields of Application:

- In all soils and clay granulates
- For inside and outside, such as, e.g.:
 - For plant troughs
 - Perennials and shrubs
 - Bushes
 - Hedges vegetable and fruit cultivation in horticultural farms
 - Valuable plants - controlled hibernation in store granulate

PRODUCT #	DESCRIPTION
03090302	METER MOISTURE DIGITAL BLUMAT



Testing Meters & Solutions



HM METER TDS-EZ WATER QUALITY TESTER

FEATURES:

- Economy model that is ideal for end-users
- Highly efficient and accurate due to its advanced microprocessor technology
- Hold Function: saves measurements for convenient reading and recording
- Auto-off function: the meter shuts off automatically after 10 minutes of non-use to conserve batteries
- Measurement Range: 0-9990 ppm. From 0-999 ppm, the resolution is in increments of 1ppm. From 1000 to 9990 ppm, the resolution is in increments of 10ppm, indicated by a blinking 'x10' image
- Display: large and easy-to-read LCD screen
- Factory Calibrated: our meters are calibrated with a 342 ppm NaCl solution. Meters can be recalibrated with a mini-screwdriver
- Fun, translucent blue housing that's very strong and durable
- Includes a TDS chart sticker on the back of the meter that explains TDS values

PRODUCT #	DESCRIPTION
03110034	HM METER TDS- EZ

HM PH80 PH METER HYDROTESTER

FEATURES:

- Measures pH and Temperature
- One-touch automatic digital calibration
- Water resistant
- Simultaneous temperature display
- Sleek, lightweight design
- Large LCD display
- Automatic Temperature Compensation (ATC)
- Auto-off function, data-hold function and low-battery indicator
- Includes storage solution in a sponge embedded in a translucent cap
- Factory Calibrated: The PH-80 meter is factory calibration to pH 7.0. The meter can easily and quickly be recalibrated with digital calibration to pH 4.0, 7.0 or 10.0 using the meter's simple one-touch process
- Includes a cap, batteries, storage solution and pH 7.0 buffer

PRODUCT #	DESCRIPTION
03110490	HM PH80 PH METER

HM COM-100 METER EC/TDS/TEMP

FEATURES:

- Measures electrical conductivity (EC), total dissolved solids (TDS), salinity and temperature
- UPGRADED: Four scales: μ S, mS, ppm, ppt (mS and ppt are new)
- Three different non-linear EC-to-TDS conversion factors (KCl, 442TM, NaCl)
- Automatic Temperature Compensation (ATC) using three temperature coefficients
- Waterproof housing (IP-67 rating)
- Measurement Range: 0-9990 μ S; 0-8560 ppm; 0-9.99 mS; 0-8.56 ppt
- Digital Calibration (push button) to any point within the meter's range
- Auto-off function, data-hold function and low-battery indicator
- Display: large and easy-to-read LCD screen includes simultaneous temperature reading.
- Replaceable Sensor (model SP-C1)
- Factory Calibrated: The COM-100 meter is calibrated with a 1413 μ S solution. The meter can be recalibrated with digital calibration using the push buttons, rather than a screwdriver
- Includes a cap, batteries and lanyard

PRODUCT #	DESCRIPTION
03110030	HM COM-100 METER EC/TDS/TEMP





HM DIGITAL™ HYDROMASTER CONTINUOUS pH/EC/TDS/TEMP MONITOR MODEL HM-500

HydroMaster Digital tester makes monitoring water easier than ever by reading the levels that matter most and providing accurate readings that you can depend on.

FEATURES:

- Continuous pH/EC/TDS/Temp monitor with rechargeable battery
- Portable, wall mount or benchtop use
- Tests pH at a range of 0 pH-14 pH, temperatures from 30°F-176°F, TDS from 0-9999 ppm and EC from 0-9999 µS
- Stores up to 20 measurement readings, so you can monitor changes over time
- LCD touch-type screen with auto backlighting. Includes a rechargeable lithium ion battery
- Adjustable alarm that has a high and low set point
- Automatically turns off after 5 minutes
- Comes with wall mountable bracket, USB cable, 2 flotation disks, 1 EC/TDS conductivity sensor, 1 pH sensor, 1 packet each pH 4, pH 7, storage solution and 1000 ppm calibration solution



PRODUCT #	DESCRIPTION
03110491	HM EC/TDS/PH/ TEMP CONTROL MONITOR

HM DIGITAL™ HM COM-80 EC/TDS/TEMP HYDRO TESTER

The COM-80 is an economically priced, reliable EC/TDS meter that is ideal for testing applications such as hydroponics & gardening, pools & spas, aquariums & reef tanks, water ionizers, drinking water and more.

FEATURES:

- Measures electrical conductivity (EC), total dissolved solids (TDS). Excellent for nutrient testing
- Four scales: EC: µS, mS; TDS: ppm, ppt
- Automatic Temperature Compensation (ATC)
- Water resistant
- Measurement Range: 0-9990 µS; 0-5000 ppm; 0-9.9 mS; 0-5.0 ppt
- Digital Calibration (push button) to any point within the meter's range
- Auto-off function, data-hold function and low-battery indicator
- Display: large and easy-to-read LCD screen includes simultaneous temperature reading
- Factory Calibrated: The COM-80 meter is calibrated with a 1413 µS solution. The meter can be recalibrated with digital calibration using the push buttons.
- Includes a protective cap and batteries



PRODUCT #	DESCRIPTION
03110492	HM COM-80 EC/TDS/TEMP HYDRO TESTER



HM pH BUFFER SOLUTION VARIETY PACK

HM Digital's pH buffer solution comes in powder form, so it's lightweight, takes up very little space, is inexpensive and has an indefinite shelf life. Includes pH 4, pH 7 & pH 10.

FEATURES:

- Variety pack of pH buffer solution
- Simple to use
- Powder has an indefinite shelf life

PRODUCT #	DESCRIPTION
03I20015	pH BUFFER SOLUTION VARIETY PACK



TDS AND EC CALIBRATION SOLUTIONS

For optimal performance, re-calibrate your meters periodically or if testing TDS or conductivity levels in wide or different ranges.

FEATURES:

- NaCl calibration solution, available in 342 ppm or 1000 ppm
- Comes in lightweight HDPE plastic bottles
- Sealed with a coated foam liner

PRODUCT #	DESCRIPTION
03I20013	CALIBRATION SOLUTION 1000 PPM NaClT
03I20014	CALIBRATION SOLUTION 342 PPM NaCl





BLUELAB WORLD-LEADING WATER-BASED MEASUREMENT SYSTEMS FOR PRO- DUCTIVITY AND QUALITY.

Manage crop health and productivity the easy way with a Bluelab meter, monitor or controller.

Bluelab has been dedicated to helping the hydroponic industry manage crop health and productivity easily and effectively for over 30 years. Bluelab has a wide range of tough and dependable nutrient solution testers and accessories that measure pH, conductivity (ppm/EC) and temperature. Their testing products make knowing the essentials easy – so you can have better plants, and a better and growing horticulture business.



BLUELAB EC & PPM PENS

The ultimate handy solution for measuring conductivity (EC or ppm) and temperature! The Bluelab EC or ppm Pen simply tells you that your plants have the right amount of nutrient in your solution and lets you know if adjustments are needed. To feed plants well, we need to know what we're feeding them. Start with a quality nutrient.

Measuring the conductivity every day is the best way to avoid over-diluting or over-concentrating your nutrient solution. Completely change the reservoir solution every 7 days. Top up the nutrient level between changes - so your plants always have the right amount of food.

The Bluelab EC or ppm Pen also measures the temperature of the solution, as root health is vital to the success of a crop. Temperature affects the growth rate and structure of a plant so a solution temperature of 18 - 22°C or 65 - 72°F is recommended.

FEATURES:

- Measures conductivity and temperature
- Selectable units for conductivity and temperature
- Backlit LCD display
- Calibration optional
- Successful EC or ppm calibration indicator
- Hold reading function
- Low battery indicator
- Fully waterproof
- Auto off function
- Automatic temperature compensation
- 1 x AAA alkaline battery included

PRODUCT #	DESCRIPTION
03110495	BLUELAB METER PPM PEN





BLUELAB pH PEN

Plants get their nutrient from minerals but they can only get all the right minerals they need if certain conditions are right. Think of nutrients like a lock. pH is the key. A key factor that affects food uptake is whether your solution is acid or alkaline. We measure this in pH.

The Bluelab pH Pen also measures the temperature of the solution, as root health is vital to the success of a crop. Temperature affects the growth rate and structure of a plant so a solution temperature of 18 - 22°C or 65 - 72°F is recommended.

The hand held pH pen provides a compact quick and handy way to manage the success of your crop to ensure maximum uptake of nutrients.

FEATURES:

- Measures pH and temperature
- Selectable units for temperature
- Backlit LCD display
- Double junction probe (not replaceable)
- Successful pH calibration indicator
- Hold reading function
- Low battery indicator
- Fully waterproof
- Auto off function
- Automatic temperature compensation
- 1 x AAA alkaline battery included



PRODUCT #	DESCRIPTION
03110496	BLUELAB METER PH PEN



BLUELAB GUARDIAN MONITOR

The Bluelab Guardian Monitor provides 24 hour continuous reading for pH, conductivity (EC/ppm 700/TDS/CF) and temperature within a nutrient solution.

Optimizing these critical parameters through a plants' growing phase helps ensure a successful crop.

Designed for indoor use, the Guardian Monitor can be mounted on a wall or hung on a support bar. Set up your reservoir, place the pH and conductivity probes in the solution, then adjust and glance!

Simply set high and low alarm states – if the solution moves away from the ideal range, the display flashes. A quick look at the monitor will let you know when your nutrient solution needs adjusting.

FEATURES:

- Plant-safe green LEDs
- Large easy to read displays
- No calibration required for conductivity and temperature
- Simple push button pH calibration
- Selectable values for conductivity and temperature
- Flashing high and low alarms
- Greater tolerance to RF / electronic interference provided
- Water resistant design
- International power supply included
- Replaceable double junction pH probe included
- Adjustable display brightness
- Non-volatile memory (setting retained when power lost)



PRODUCT #	DESCRIPTION
03II0497	BLUELAB GUARDIAN METER TEMP/pH/EC

BLUELAB PROBE CARE KIT - CONDUCTIVITY

Everything you need to clean and test conductivity (ppm/EC) / temperature probes. The instrument is only as accurate as the probe is clean. Accurate readings simplify crop management and provide improved growth.

Proper ppm/EC probe maintenance also ensures you maximize the life of the probe and instrument. The probe surface is where the instrument takes the reading of the solution. If the probe face is dirty or contaminated, the readings may be inaccurate. Much like the windshield of a car, if it's dirty you can't see out! If the probe face is dirty, it cannot read the solution.

A tip: If the conductivity reads low, the probe needs cleaning



PLEASE CONTACT YOUR REP FOR PRICING.

PRODUCT #	DESCRIPTION
03I20016	PROBE CARE KIT- CONDUCTIVITY



BLUELAB SOIL pH METER

The pH level of soils, substrates or media strongly influences crop performance. Do you know what the pH of your soil is? pH Soil testing made simple! Most soils have a natural buffer for nutrients and pH but when it goes wrong, it goes really wrong and fast.

Yellow leaves, stunted growth, slow growth, are all signs that the plant is not getting the nutrients they need from the soil. This is often caused by 'lock up'. This is a situation where the plant loses the ability to absorb specific nutrient elements because the pH value of the soil is incorrect.

This needs to be dealt with quickly, so the BlueLab Soil pH Meter is exactly what you need. This handheld meter comes with a replaceable Soil pH Probe and instructions for measuring direct into soils or measuring a soil solution. Used for cropping, pasture, turf culture, containerized plants, home gardens, orchards, tree farms, greenhouses, propagation culture... anywhere that involves growing plants in soils.

The replaceable soil pH probe can be used to measure the pH value of solutions or nutrient mixes too!

FEATURES:

- Lightweight and portable
- Large easy to read display
- Simple push button pH calibration
- Replaceable soil pH probe included
- Successful pH calibration indicator
- Over range and under range indicators
- 2 x AAA alkaline batteries included
- Auto off function
- Low battery indicator

PRODUCT #	DESCRIPTION
03110498	BLUELAB METER SOIL PH
03110499	BLUELAB METER SOIL PH PROBE



BLUELAB TRUNCHEON® NUTRIENT METER

The World's favorite conductivity meter. Simply brilliant, brilliantly simple!

It is essential when growing with a hydroponic solution to KNOW what the strength of the solution is before feeding your plants AND while they are growing. If the conductivity reading is too low, your plants may not be getting enough nutrients. If the conductivity reading is too high, plants can dehydrate.

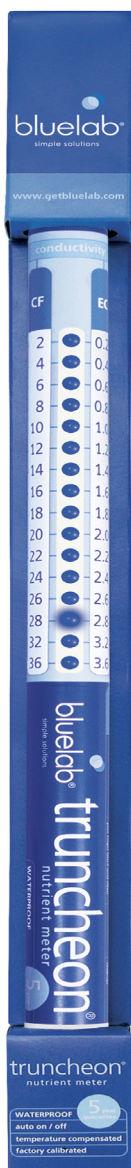
Understanding the conductivity of the nutrient solution takes the guesswork out of feeding plants. It will also save you money! Using the BlueLab Truncheon® Nutrient Meter is the fastest and easiest way to measure the conductivity!

To take a reading of your solution - simply place the probe head into the solution and the reading is indicated by the flashing lights. Calibration of the Truncheon® Nutrient Meter is not required.

Meter length: 40.7cm or 16 1/32 in.

FEATURES:

- Fully waterproof
- Auto on/off function
- No calibration required
- Daylight readable blue LED's
- Battery operated – 3 x AA batteries included
- No buttons, switches or knobs
- Provided with EC, CF, ppm 700 and ppm 500 scales



PRODUCT #	DESCRIPTION
03110015	BLUELAB QUICK DIP/TRENCHON STICK



BLUELAB PRO COMBO METER

It's all you need for simple and reliable crop management.

The Bluelab Combo Meter is a portable pH, conductivity and temperature meter all in one. If you are experiencing problems with yellow leaves, or slow stunted growth, the Bluelab Combo Meter will soon tell you if each parameter is within the plants requirements. Adjustments can be quickly made to get your crop back on track.

The Bluelab Combo Meter has two probes, a Bluelab pH Probe and a Bluelab Conductivity/Temperature Probe. When taking a reading, simply place them into the solution and the selected reading is displayed on screen. As the Bluelab Combo Meter is portable and does not require a power supply to operate, it can be used anywhere, anytime to help you manage your crops' daily nutrient requirements.

Calibration of the pH probe is simple as instructions are supplied on the back of the meter and the easy push button method makes this one of the simplest meters to use. The pH probe is replaceable so you can use this meter for years to come. The Conductivity/temperature probe does not require calibration as this is locked in during manufacture.

FEATURES:

- Measures pH, conductivity/nutrient (EC, CF, ppm 500 and ppm 700) and temperature (°C, °F)
- Lightweight and portable
- Large easy to read display
- Simple push button pH calibration
- Successful pH calibration indicator
- No calibration required for conductivity and temperature
- Replaceable double junction pH probe included
- Over range and under range indicators
- Low battery indicator
- 2 x AAA alkaline batteries included
- Auto off function



PRODUCT #	DESCRIPTION
03110506	BLUELAB GROW SAFE PRO COMBO METER
03110334	BLUELAB PH PROBE REPLACEMENT 6 1/2'





BUMPER UP

Bumper Up works by raising the pH of plantfood solutions.

PRODUCT #	DESCRIPTION
04230041	BUMPER UP 1L
04230042	BUMPER UP 4L

CASE QUANTITY: 1L 12/CASE; 4L 4/CASE



BUMPER DOWN

Bumper Down helps your plants absorb nutrients by lowering the pH of the water around your plant's roots.

PRODUCT #	DESCRIPTION
04230021	BUMPER DOWN 1L
04230022	BUMPER DOWN 4L

CASE QUANTITY: 1L 12/CASE; 4L 4/CASE

CALIBRATION SOLUTIONS

CannaMax are accurate laboratory calibration standard solutions used to calibrate pH and PPM/EC meters. Black light proof bottle keeps CannaMax solutions fresh and ready when you need them.



PRODUCT #	DESCRIPTION
03120010	1000 PPM REFERENCE SOLUTION 500ML
03120020	pH7 REFERENCE SOLUTION 500ML
03120030	pH4 REFERENCE SOLUTION 500ML

CASE QUANTITY: 500ML 12/CASE



Resources



Your plant will recognize the Original Blossom-Blood

Blossom-Blood



Before

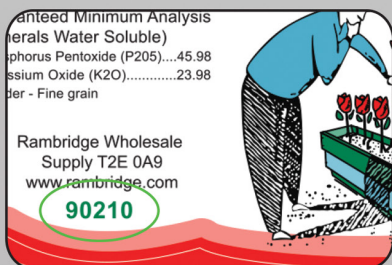
Due to the popularity of Blossom-Blood, counterfeit copies do exist. Make sure you buy the ORIGINAL Blossom-Blood.

*Rambridge will provide compensation for information pertaining to the sale of counterfeit Blossom-Blood



After

NEW Security features to help you authenticate your Blossom-Blood



Unique Serial Numbers



Die-Cut Gloss Label



Hologram Security Sticker



For more information, please speak to your local retailer or visit our website www.rambridge.com. Or you can contact Rambridge toll free at 1.800.265.4769 and fax 1.866.852.5475





Additives that work!

Blossom Blood

Beautiful Flowers, Healthy Plants
Selective pH Control Water Treatment

HOW TO USE BLOSSOM BLOOD

Directions are for maximum strength. We recommend using 1/2 the amount of Blossom Blood to start with. Response varies with different plant types.

Hydroponics: Add Blossom Blood directly to your reservoir when flower buds appear well established. Repeat the process once more in 2 weeks or next nutrient change. For every 10 litres of growing solution in your reservoir mix in 1 gram of Blossom Blood. One 20 gram package will treat 200 litres of growing solution.

Soil Applications: Dissolve 1 gram into 20 litres of water. Water with 1/2 litre per plant when the flower buds are established. Repeat the procedure once more in 2 weeks.

Veg-Booster

HOW TO USE VEG-BOOSTER

Hydroponics: Add Veg-Booster directly to your reservoir when the roots have developed on your cuttings. **USE ONLY ONCE.** For every 15 litres of growing solution in your reservoir mix in 1 gram of Veg-Booster. One 20 gram package will treat 300 litres of growing solution.

Soil Applications: Dissolve 1 gram of Veg-Booster into 20 litres of water. Water with 1/2 litre per plant when you see the roots have developed. **USE ONLY ONCE.**

NOTE: For both the Blossom Blood and Veg-Booster **DO NOT USE** as a foliar spray. Use with fresh water only.



Blossom Blood

What is Blossom Blood?

Blossom Blood is a product specifically for floral crops that has an amazing impact on the development of the flowers.

How do I use Blossom Blood?

Blossom Blood is added to your reservoir when you are sure your plants have entered into the flowering stage. Blossom Blood should be added in very small quantities as all flowers will respond differently. Follow the instructions on the package closely, remember, less is more.

What happens if Blossom Blood is foliar sprayed on a plant?

Kiss your plant goodbye.

What happens if too much Blossom Blood is added to my reservoir?

Drain your reservoir immediately and flush the system with fresh water. Make up a new batch with the correct amount of Blossom Blood. You should experiment with the amount of Blossom Blood, by using half the recommended dose and work your way up to full strength.

Liquid Gold

Hydroponic Specialty Nutrient Component 0-0.04-0.06

- *Increases the fresh weight of floral crops when used as a foliar feed during flowering*
- *Positive effect on the transfer of minerals, vitamins and hormones*



HOW TO USE LIQUID GOLD

Liquid Gold is a concentrate. It must be diluted before application.

FOLIAR FEEDING: Mix 5 ml of Liquid Gold per litre (1 tsp/qt) of water (distilled water is best). Using a fine spray, lightly mist the flowers as they develop. May be applied daily. DO NOT soak the flowers. DO NOT mix Liquid Gold with any other foliar spray products.

HYDROPONICS: When changing your nutrient use 2 ml per litre (1/2 tsp/qt) of nutrient solution to promote improved nutrient uptake, especially micro nutrients. Compatible with all hydroponic nutrients.

POTTING SOIL: Mix 1 ml per litre of water (1/4 tsp/qt). Apply to pots three times (soil drench) during each phase of growth. May be mixed with plantfood.

Questions & Answers

Where does Liquid Gold come from?

Liquid Gold's source is from living plant material that grows in the sub-arctic. These plants do not freeze in the spring when night temperatures dip into the freezing range. While research has not answered exactly why these plants do not freeze, it is suspected that a particular blend of naturally light molecular weight humat substances present in the plant are responsible. Liquid Gold has an positive effect on cell metabolism rates.

Why is Liquid Gold a gold color when other fulvic like products are a dark color? Liquid Gold is a naturally occurring pure extract from living plants. Plants respond best to this fulvic blend. Other fulvics are sourced from compressed dead plant matter and are contaminated with heavier humate materials which gives it the dark color. Also, it is important to remember that plants do not respond to all fulvic blends.

Can I use Liquid Gold in my reservoir?

Yes, you can add Liquid Gold directly to your reservoir water. It is compatible with any nutrient.

What are the effects of treating my water in my reservoir with Liquid Gold?

Liquid Gold will increase the cell metabolic rate which translates into better growth. Seedlings that usually grow to 20 cm (8 inches) have been reported to grow up to 30

cm (12 inches) in the same time period. This has been seen to be true of crops throughout the entire plant cycle.

Can I foliar spray my crop with water treated with Liquid Gold?

Yes, Liquid Gold can be effectively applied by foliar spraying. Just a light misting rather than a drench. This is a preferred method if you want to apply Liquid Gold to specific areas on the plant during particular stages of plant growth. Liquid Gold is absorbed directly into the plant tissue and regular daily spraying on select parts of the plant will treat new growth cells.

How do you mix a foliar spray using Liquid Gold?

The instructions indicate that you should mix 5 mL of Liquid Gold into one litre of water. Experience has indicated that there is a safe margin of error and you can use up to 10 mL per litre with very good results.

Can too much Liquid Gold be applied to a plant?

For use in a reservoir, Liquid Gold is effective in very low amounts. More is not better and to achieve the best results, follow directions. If you apply too much, you simply waste it. Foliar spraying is more variable and excess tends to run off.

There are "things growing" in my Liquid Gold?

Liquid Gold likes to promote the growth of organic things and while every

precaution is taken during the processing, sometimes penicillin spores can awaken and take advantage of the potential contained in Liquid Gold. While this penicillin does consume a very small amount of the Liquid Gold, it will in no manner effect or harm any plants.

Can I use Liquid Gold on plants growing in soil?

The best way to use Liquid Gold on soil plants is to foliar spray it. You can also do a soil drench if foliar spraying is not an option.

I have read that fulvic Substances can also have positive effects on people?

Yes, some health foods claim to have fulvic substances in them and claim that it increases the human cellular metabolism. Remember that there are 100's of fulvic blends, depending on the source. Plants respond best to Liquid Gold. The effects of Liquid Gold on human cells has not been researched, so give it to your plants, not yourself.

Can Liquid Gold be frozen?

While freezing may not effect the Liquid Gold, it can cause the bottle to fail. Avoid freezing if possible.



Liquid Black Crystal

Hydroponic Specialty Nutrient Component 0-0.04-0.06

- Promotes nutrient uptake
- Stimulates root and stem growth
- Add to nutrient solutions or use in water for soil grown plants



HOW TO USE LIQUID BLACK CRYSTAL

Liquid Black Crystal is a concentrate. It must be diluted before application.

- **SEEDLINGS:** Mix 5 ml per litre (1 tsp/qt) of water (or nutrient solution). Apply to growing mediums when rooting cuttings or just after seed germination and during early seedling stage for dramatic root growth.
- **HYDROPONICS:** When changing nutrient add 3 ml to 5 ml per litre (1/2 - 1 tsp/qt) of nutrient solution. Use throughout the entire growth cycle to promote improved nutrient uptake.
- **POTTING SOIL:** Mix 5 ml per litre (1 tsp/qt) of water. Apply to pots three (3) times (soil drench) during each phase of growth. May be mixed with plant food.

COMPATIBLE WITH ALL ROOTING GELS AND LIQUIDS. COMPATIBLE WITH ALL HYDROPONIC NUTRIENTS. IDEAL FOR OUTDOOR CROPS.

Questions & Answers

What is Liquid Black Crystal?

Liquid Black Crystal is a heavy molecular weight humic blend that is extracted from ancient plant material. Liquid Black Crystal is a blend sourced from a particular lignite ore that has shown to have a greater positive effect on plant nutrient uptake than any other source.

How do I use Liquid Black Crystal?

Liquid Black Crystal must be put into your reservoir or use as a soil drench. Mix 3 ml (1/2 tsp/qt) of Liquid Black Crystal per litre of nutrient in your reservoir. Liquid Black Crystal is most effective in small quantities. Do not exceed 5 ml per litre (1 tsp/qt). Mix 5 ml per litre for a soil drench. Apply every time you apply nutrient to your soil.

What does Liquid Black Crystal do?

Liquid Black Crystal is a humic blend that assists in increasing the ion exchange across the root membrane. It improves the plants ability to absorb nutrients, thus the plant grows better.

There are several humic acid products in the market, what makes Liquid Black Crystal so special?

Liquid Black Crystal is a humic blend that plants respond best to. You can see the effect of the Liquid Black Crystal on your plants. Not all humic blends are the same, and some have no effect on plants at all.

Can I freeze Liquid Black Crystal?

Yes, freezing will not harm Liquid Black Crystal, however, it can cause bottle failure. It is best not to freeze it.

Can Liquid Black Crystal be harmed by high heat? No, warm temperatures do not harm Liquid Black Crystal.

Does Liquid Black Crystal become less effective with age?

Liquid Black Crystal has a long shelf life.

Can I apply Liquid Black Crystal as a foliar spray? Liquid Black Crystal is most effective when it is applied to the root zone of a plant. Do not foliar spray with Liquid Black Crystal.

Does Liquid Black Crystal enter into the plant? No, Liquid Black Crystal does not enter into a plant but rather remains on the outside of the root.

Can I use Liquid Black Crystal in my outdoor garden? Yes, Liquid Black Crystal can be used for gardens and lawns, particularly where the pH of the soil is high. Apply as a spray directly to the soil, or mix 5 ml per litre and drench bedding plants and garden seedlings.



Green Up

Hydroponic Specialty Nutrient Component 1-3.5-0

- Feeds cuttings even before they develop roots
- Reduces yellowing, increases success rate
- Accelerates vegetative growth when added to any grow nutrient



HOW TO USE GREEN UP

Use Green Up to reduce yellowing in clones while they develop new roots. Mix 3 ml of Green Up into 1 litre (1/2 tsp/qt) of water. Use this water to do the initial soaking of your rockwool cubes or rooting medium, prior to placing in your cuttings.

- **HYDROPONICS:** Green Up encourages very aggressive vegetative growth in young plants when it is added in with your hydroponic nutrient (in the reservoir). Add 5 ml of Green Up for every litre (1tsp/qt) of nutrient your reservoir holds. Mix in well and adjust the pH of your nutrient solution.
- **POTTING SOIL:** Add 5 ml to 1 litre (1 tsp/qt) of water. Apply two (2) applications for soil growing.

Green Up is scientifically formulated from minerals and plant extracts. Used as directed, **Green Up will promote stronger, healthier clones with more vigor.** When integrated with a regular nutrient program, Green Up enables the grower to experience an aggressive vegetative growth cycle resulting in greater floral growth. This is particularly useful with your various herb crops.

Questions & Answers

What is Green-Up? Green-Up is designed to reduce yellowing when cuttings are rooting. It has the ability to feed a cutting before the roots have developed.

How do I use Green-Up on cuttings?

Add 3 ml of Green-up to a litre of water. Soak the rockwool cubes prior to putting the cuttings into them. If you are using other rooting mediums, use this Green-Up mixture to do the initial soaking. It is important that you do not repeat this application. Green-Up can feed a seedling when it has no roots to speak of, so you should see what it can do to seedlings that have roots.

If I want to use Green-Up on seedlings, how should I apply it? Add 3 ml per litre of nutrient each time you change your nutrient. You must also have a very high light level and adding a little extra CO2 is a good idea. Drop Green-Up from the plants diet at the last nutrient change prior to flowering. Give the plant a rest and pause.

I am using Green-Up and still some of my cuttings don't make it? Green-Up helps the yellowing in cuttings. There are still lots of things that can attack cuttings. pythium fungus particularly loves young cuttings except those treated with Guardian Angel and Bio-Bran.

Can I foliar spray Green-Up? **DO NOT** foliar spray Green-Up directly on cuttings, seedlings or maturing plants.

Can I use Green-Up with any brand of nutrients? Yes, Green-Up is compatible with any quality brand name nutrients.

Can I freeze Green-Up? Green-Up should not be frozen. If freezing has been suspected and the bottle has not been damaged, place the GreenUp in very hot water until it is warm. Then shake. If it remains green it is OK.

Does Green-Up have a shelf life?

Technically, Green-Up should last indefinitely, but experience has shown that you should use the Green-Up within a year or so. It seems to still work after that time, almost as good as when it is fresh. It is best if Green-Up is used within a year from time of purchase. Using Green-up after this time period may not yield the same results.



Clearing Solution

Hydroponic Specialty Root Wash

- Use in the final stages of plant growth to promote a final burst of flower expansion
- Ensures that all nutrients and residues are “cleared” from the plant, leaving a clean fresh taste



HOW TO USE CLEARING SOLUTION

Clearing Solution is a concentrate. It must be diluted before application.

- **SEEDLINGS:** Use Clearing Solution at least one week before the final harvesting. Longer periods may be beneficial, depending on the crop.
- **HYDROPONICS:** Drain your nutrient reservoir and refill with fresh water. Add 5 ml of Clearing Solution for every litre (1 tsp/qt) of water your reservoir holds. Mix well and adjust to pH 5.5
- **POTTING SOIL:** Mix 15 ml per litre (3 tsp/qt) and soak the soil until the solution runs out the bottom.
- **OTHER USES:** To correct excess nutrient accumulation, drain your nutrient and use Clearing Solution for 1 to 2 days to reduce old nutrient from your growing medium and restore your roots back to a healthy feeding pattern. Clearing Solution is NOT a plantfood so drain and refill your reservoir with fresh nutrients.

Clearing Solution is scientifically formulated from natural minerals and plant extracts that assist a plant to clear out nutrients accumulated in a plant's flowers and leaves. Used as directed, **Clearing Solution enables the grower to have control over the final appearance of dried leaves and flowers.** This is particularly useful with various herb crops where taste and texture is important.

Questions & Answers

What is Clearing Solution? Clearing Solution is used to replace the nutrient in the final days before removing a floral crop from your growing system. This product induces a stress on the plants system forcing reactions within the plant. These reactions result in an amazing amount of energy stored in the plants roots to combine with elements in the leaves and be directed to the remaining flowers. A final reproductive surge.

How do I use Clearing Solution? Drain your reservoir and fill with water. Add 5 mL (1 tsp) of Clearing Solution per litre/quart of water. Let your garden grow for several more days. While the instructions indicate using it for only a few days, experience has shown that, depending on the nutrient that the crop was grown on, extending this period up to two weeks is beneficial.

What are the effects of using Clearing Solution? Clearing Solution can create a browning or “fall” effect in the color of the whole plant. In some floral crops it will promote the growth of tracery flowers giving a very good bouquet effect. When used on tobacco, sweet grass or sage, it will improve the burning and sensory qualities. There is also an increase in actual yield.

Can Clearing Solution be foliar sprayed? No. **DO NOT** foliar spray Clearing Solution.

Can I use Clearing Solution on fruit and vegetable crops? Clearing Solution has been designed to work on floral crops. In actual experience, it also has applications on grasses, in particular varieties used for smudging like sweet grass and sage.

This bottle of Clearing Solution has things growing in it? Clearing Solution should be thought of as being alive. That it grows things is a sign it is still fresh. It has things in it that want to grow and are held in check by a low pH. It is common to see small black specks on the sides of the bottle.

How long can Clearing Solution be stored before it should not be used? Clearing Solution should be used within 18 months, or within a year if stored in hot conditions. Experience has shown that it can be used beyond this time limit, however, it is more effective when it is fresher.

I accidentally mixed Clearing Solution in with my nutrient? Drain the nutrient Clearing Solution immediately from the system. Flush with fresh pH adjusted water. Make up a new nutrient solution. **DO NOT** mix Clearing Solution with nutrients.

I have seen products that claim similar results. How do they compare? Clearing Solution is designed to increase total yield and improve quality. If you have been using Clearing Solution and then use the other products you will notice the difference. Clearing Solution is designed to yield and improve quality. We have had consistent results and are confident that it will work for you.



RAMBRIDGE SPECIALTY HYDROPONIC NUTRIENTS

	BASIC FEED				ADVANCED		EXPERT				
	BUMPER A	BUMPER B	BLOSSOM A	BLOSSOM B	GUARDIAN ANGEL	MR. NO	LIQUID BLACK CRYSTAL	LIQUID GOLD	GREEN-UP	BLOSSOM BLOOD	VEG BOOSTER
	NUTRIENTS				PLANT HEALTH		DRY FLOWER PRODUCTS				
WEEK 1	5 ml/litre 4tsp/gal	5 ml/litre 4tsp/gal			0.75 ml/ L		5 ml/ L		5 ml/ L 4 tsp/gal		
WEEK 2	5 ml/litre 4tsp/gal	6 ml/litre 4.5 tsp/gal			0.75 ml/ L		5 ml/ L 4 tsp/gal	2 ml/ L 1.5 tsp/gal			
WEEK 3			5 ml/litre	5 ml/litre 4 tsp/gal	0.75 ml/ L		5 ml/ L	2 ml/ L 1.5 tsp/gal		1 g/ 10L	
WEEK 4			5 ml/litre	6 ml/litre	0.75 ml/ L		5 ml/ L	2 ml/ L 1.5 tsp/gal			
WEEK 5			5 ml/litre	7 ml/litre	0.75 ml/ L	5 ml/ L 4 tsp/gal	5 ml/ L 4 tsp/gal	2 ml/ L 1.5 tsp/gal		1 g/ 10L	1g/ 15L
WEEK 6			5 ml/litre 4 tsp/gal	7 ml/litre 5.25 tsp/gal	0.75 ml/ L		5 ml/ L	2 ml/ L 1.5 tsp/gal			
WEEK 7			5 ml/litre 4 tsp/gal	7 ml/litre	0.75 ml/ L		5 ml/ L 4 tsp/gal	2 ml/ L 1.5 tsp/gal			
FINAL WEEK	In the final week or when crop has finished flowering, drain your reservoir and add only Clearing Solution for 3 to 10 days.										

SOIL USE: Use at 1/3 to ½ strength every other watering. Place a saucer under each pot. Add nutrients and extras to the saucer and let the soil take up what it can hold. Empty out everything not taken up. Water without nutrients from the top until the water flows out the bottom into the saucer. Empty any water from the saucer. Thoroughly leech each pot with water monthly.



The following schedules apply to soil, hydro, and cocos nutrients. The EC value lies between 1.0 and 2.2. The pH-value lies between 5.5 and 5.8. Dosage indications for producing a nutrient reservoir of 100L

Week	Soil Nutrient A	Soil Nutrient B	PK 13/14	Root Stimulator	Growth Stimulator	Bloom Stimulator
1	100-200 mL	100-200 mL	×	100 mL	50-100 mL	×
2	100-200 mL	100-200 mL	×	100 mL	50-100 mL	×
3	200-250 mL	200-250 mL	×	×	25-50 mL	100 mL
4	250-300 mL	250-300 mL	×	×	25-50 mL	100 mL
5	250-300 mL	250-300 mL	150 mL	×	25-50 mL	150 mL
6	250-300 mL	250-300 mL	150 mL	×	25-50 mL	200 mL
7	250-300 mL	250-300 mL	150 mL	×	×	200 mL
8	250-300 mL	250-300 mL	150 mL	×	×	200 mL
9	250-300 mL	250-300 mL	150 mL	×	×	200 mL
10	250-300 mL	250-300 mL	×	×	×	200 mL

Week	Hydro Nutrient A	Hydro Nutrient B	PK 13/14	Root Stimulator	Growth Stimulator	Bloom Stimulator
1	75-100 mL	75-100 mL	×	100 mL	50-100 mL	×
2	100-150 mL	100-150 mL	×	100 mL	50-100 mL	×
3	150-200 mL	150-200 mL	×	×	25-50 mL	100 mL
4	200-300 mL	200-300 mL	×	×	25-50 mL	100 mL
5	200-300 mL	200-300 mL	150 mL	×	25-50 mL	150 mL
6	200-300 mL	200-300 mL	150 mL	×	25-50 mL	200 mL
7	200-300 mL	200-300 mL	150 mL	×	×	200 mL
8	200-300 mL	200-300 mL	150 mL	×	×	200 mL
9	200-300 mL	200-300 mL	150 mL	×	×	200 mL
10	200-300 mL	200-300 mL	×	×	×	200 mL

Week	Coco Nutrient A	Coco Nutrient B	PK 13/14	Root Stimulator	Growth Stimulator	Bloom Stimulator
1	100-150 mL	100-150 mL	×	100 mL	50-100 mL	×
2	100-150 mL	100-150 mL	×	100 mL	50-100 mL	×
3	150-200 mL	150-200 mL	×	×	25-50 mL	100 mL
4	200-300 mL	200-300 mL	×	×	25-50 mL	100 mL
5	200-300 mL	200-300 mL	150 mL	×	25-50 mL	150 mL
6	200-300 mL	200-300 mL	150 mL	×	25-50 mL	200 mL
7	200-300 mL	200-300 mL	150 mL	×	×	200 mL
8	200-300 mL	200-300 mL	150 mL	×	×	200 mL
9	200-300 mL	200-300 mL	150 mL	×	×	200 mL
10	200-300 mL	200-300 mL	×	×	×	200 mL

NUTRIENTS SCHEDULE

— Grow — Hybrids — short Flowering — long Flowering

PHASE	VEGETATIVE PHASE					FLOWERING PHASE												
LIGHT	18 HOURS					12 HOURS												
WEEK	YOUNG PLANT/ SEEDLING	GROWTH	PRE CUTTING REGIMEN	POST CUTTING REGIME	LIBRARY REGIMEN	1	2	3	4	5	6	7	8	9	10	11	12	13

						1	2	3	4	5	6	7	8	9	10	11	12	13
TERRA	pH	5.6	6.0	6.1	6.3	6.5	-	-	-	-	-	-	-	-	-	-	-	-
		5.7	5.8	-	-	-	6.0	6.1	6.2	6.3	6.4	6.5	6.5	6.5	6.5	-	-	-
		5.7	5.8	-	-	-	6.0	6.1	6.2	6.3	6.4	6.5	6.5	6.5	6.5	6.5	-	-
		5.6	5.7	-	-	-	6.0	6.1	6.2	6.3	6.4	6.5	6.6	6.7	6.8	6.9	7.0	7.0

TERRA	EC	1.0	1.4	1.3	1.6	1.1	-	-	-	-	-	-	-	-	-	-	-	-
		1.0	1.4	-	-	-	1.5	1.5	1.6	1.6	1.6	1.7	1.7	1.8	flush	-	-	-
		1.0	1.4	-	-	-	1.5	1.5	1.6	1.6	1.6	1.7	1.7	1.8	1.8	flush	-	-
		1.0	1.4	-	-	-	1.5	1.5	1.6	1.6	1.6	1.7	1.7	1.8	1.8	1.7	1.6	1.5

						1	2	3	4	5	6	7	8	9	10	11	12	13
COCO	pH	5.5	5.6	5.7	5.8	5.9	-	-	-	-	-	-	-	-	-	-	-	-
		5.5	5.6	-	-	-	5.7	5.7	5.7	5.7	5.8	5.8	5.8	5.8	6.0	-	-	-
		5.5	5.6	-	-	-	5.7	5.7	5.7	5.7	5.8	5.8	5.8	5.8	6.0	-	-	-
		5.5	5.6	-	-	-	5.7	5.8	5.9	6.0	6.1	6.1	6.1	6.2	6.2	6.3	6.4	6.5

COCO	EC	1.1	1.5	1.4	1.7	1.2	-	-	-	-	-	-	-	-	-	-	-	-
		1.1	1.5	-	-	-	1.6	1.6	1.7	1.7	1.7	1.8	1.8	1.8	flush	-	-	-
		1.1	1.5	-	-	-	1.6	1.6	1.7	1.7	1.7	1.8	1.8	1.8	1.8	flush	-	-
		1.1	1.5	-	-	-	1.6	1.6	1.7	1.7	1.7	1.8	1.8	1.8	1.8	1.7	1.6	1.5

						1	2	3	4	5	6	7	8	9	10	11	12	13
HYDRO	pH	5.5	5.5	5.6	5.7	5.8	-	-	-	-	-	-	-	-	-	-	-	-
		5.5	5.5	-	-	-	5.6	5.6	5.6	5.7	5.7	5.7	5.7	5.8	6.0	-	-	-
		5.5	5.5	-	-	-	5.6	5.6	5.6	5.7	5.7	5.7	5.7	5.8	5.8	6.0	-	-
		5.5	5.5	-	-	-	5.6	5.7	5.8	5.9	6.0	6.0	6.0	6.0	6.1	6.1	6.1	6.2

HYDRO	EC	1.1	1.5	1.4	1.7	1.2	-	-	-	-	-	-	-	-	-	-	-	-
		1.1	1.5	-	-	-	1.6	1.6	1.7	1.7	1.7	1.8	1.8	1.8	flush	-	-	-
		1.1	1.5	-	-	-	1.6	1.6	1.7	1.7	1.7	1.8	1.8	1.8	1.8	flush	-	-
		1.1	1.5	-	-	-	1.6	1.6	1.7	1.7	1.7	1.8	1.8	1.8	1.8	1.7	1.6	1.5

DILUTION PROPORTIONS: 1g = 1L - 10g = 10L - 100g = 100L - 1Kg = 1000L



Growing Schedule: Coco

- Start building a nutrient buffer from the start, gradually increasing the base nutrients **Gold Label Coco A & B**.
- Add **Gold Label Roots** up to the 3rd week of flowering while the plant is still developing growth.

- Do not overdose your nutrient solution with **Ultra PK** and **Ultra MG**. They are highly concentrated and this will create an imbalance in your NPK levels.
- Add **Enzymes** once a week starting week 3 of flowering or at least once in week 3 of flowering and once before flushing. Add 0.5ml/litre once or 0.1ml/litre continuously.

Grow/Vegetative Stage 18hr	Coco Part A	Coco Part B	Roots	Ultra MG	Ultra PK	Enzymes	pH Levels	EC (mS/cm)	Plus background water EC of 0.4
Week 1	0.5	0.5	0.5	0.5			5.2	0.6	1.0
Week 2	0.75	0.75	0.5	0.5			5.2	0.7	1.1
Week 3	1.0	1.0	0.5	0.5			5.2	0.9	1.3

Flowering Stage 12hr

Week 1	1.0	1.0	0.5	0.5			5.8	0.9	1.3
Week 2	1.0	1.0	0.5	1.0			5.8	1.1	1.5
Week 3	1.5	1.5	0.5	1.0		0.5*	5.8	1.4	1.8
Week 4	2.0	2.0		1.0	0.25		5.8	1.7	2.1
Week 5	2.0	2.0		1.0	0.5		5.8	1.8	2.2
Week 6	2.0	2.0		1.0	0.5		5.8	1.8	2.2
Week 7	2.0	2.0		1.0	0.5		5.8	1.8	2.2
Week 8	1.5	1.5		0.5	0.5		5.8	1.3	1.7
Week 9	1.0	1.0			0.5	0.5*	5.8	0.8	1.2
Week 10	Flush	Flush	Flush	Flush	Flush	Flush	Flush	Flush	Flush

* 0.1ml/litre continuously or 0.5ml/litre once

This is a basic growing schedule. Always adapt your schedule to your crop. Different crops have different nutrient requirements.

All nutrient dosages are ml/litre

Growing Schedule: Hydro

- Start building a nutrient buffer from the start, gradually increasing the base nutrients **Gold Label Hydro A & B**.
- Add **Gold Label Roots** up to the 3rd week of flowering while the plant is still developing growth.

- Do not overdose your nutrient solution with **Ultra PK** and **Ultra MG**. They are highly concentrated and this will create an imbalance in your NPK levels.
- Add **Enzymes** once a week starting week 3 of flowering or at least once in week 3 of flowering and once before flushing. Add 0.5ml/litre once or 0.1ml/litre continuously.

Grow/Vegetative Stage 18hr	Hydro Part A	Hydro Part B	Roots	Ultra MG	Ultra PK	Enzymes	pH Levels	EC (mS/cm)	Plus background water EC of 0.4
Week 1	0.5	0.5	0.5	0.5			5.2	0.6	1.0
Week 2	0.75	0.75	0.5	0.5			5.2	0.7	1.1
Week 3	1.0	1.0	0.5	0.5			5.2	0.9	1.3

Flowering Stage 12hr

Week 1	1.0	1.0	0.5	0.5			5.8	0.9	1.3
Week 2	1.0	1.0	0.5	1.0			5.8	1.1	1.5
Week 3	1.5	1.5	0.5	1.0		0.5*	5.8	1.4	1.8
Week 4	2.0	2.0		1.0	0.25		5.8	1.7	2.1
Week 5	2.0	2.0		1.0	0.5		5.8	1.8	2.2
Week 6	2.0	2.0		1.0	0.5		5.8	1.8	2.2
Week 7	2.0	2.0		1.0	0.5		5.8	1.8	2.2
Week 8	1.5	1.5		0.5	0.5		5.8	1.3	1.7
Week 9	1.0	1.0			0.5	0.5*	5.8	0.8	1.2
Week 10	Flush	Flush	Flush	Flush	Flush	Flush	Flush	Flush	Flush

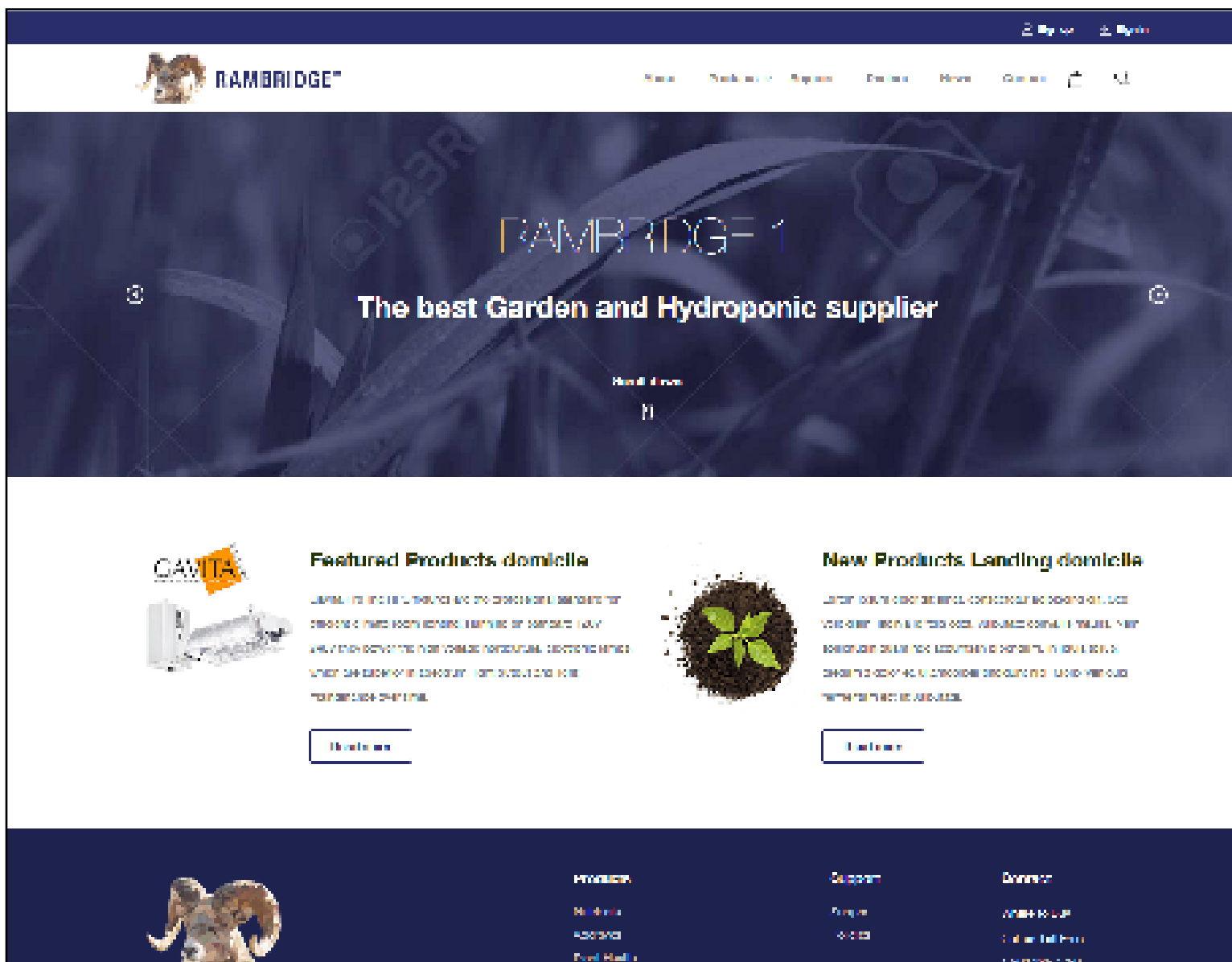
* 0.1ml/litre continuously or 0.5ml/litre once

This is a basic growing schedule. Always adapt your schedule to your crop. Different crops have different nutrient requirements.

All nutrient dosages are ml/litre



For more product information Visit Our New Website!



Sign in get full access to:

- product information- feedcharts, MSDS sheets, white papers, instruction guides, etc
- special promotions
- pricing.

www.rambridge.com





FG SERIES

MODEL #	Item #	DESCRIPTION	Installed Cord? Y/N	Motor Type	VOLTAGE	PHASE
FGC 4 XL	40377	Inline 4" Centrifugal Duct Fan, Metal Housing – 170 CFM, 120V	Y	AC	120	1~
FG 6XL H	44696	Inline 6" Centrifugal Duct Fan, Metal Housing – 483 CFM, 120V	Y	AC	120	1~
FG 8XL H	44697	Inline 8" Centrifugal Duct Fan, Metal Housing – 502 CFM, 120V	Y	AC	120	1~
FG 10XL H	44698	Inline 10" Centrifugal Duct Fan, Metal Housing – 589 CFM, 120V	Y	AC	120	1~
FG 12XL H	44699	Inline 12" Centrifugal Duct Fan, Metal Housing – 940 CFM, 120V	Y	AC	120	1~

REVOLUTION SERIES

MODEL #	Item #	DESCRIPTION	Installed Cord? Y/N	Motor Type	VOLTAGE	PHASE
Revolution Stratos 6C	49319	Inline Mixed Flow 6" AC Duct Fan, Molded Housing - 296 CFM - 8.0 cfm/w	Y	AC	120	1~
Revolution Stratos 8C	49321	Inline Mixed Flow 8" AC Duct Fan, Molded Housing - 647 CFM - 7.0 cfm/w	Y	AC	120	1~
Revolution Stratos 10C	56069	Inline Mixed Flow 10" AC Duct Fan, Molded Housing - 1380 CFM - 4.54 cfm/w	Y	AC	120	1~





AC3600/4800 AIR CURTAINS

	3600/1	4800/1
Type of installation	Horizontal	Horizontal
Type of heating	Ambient, no heat	Ambient, no heat
Length	36 inches	48 inches
Height	9.25 inches	9.25 inches
Depth	8.25 inches	8.25 inches
Weight	26 lbs	28.7 lbs
Max Installation Height	108 inches	108 inches
Control/motor supply	115V	115V
Control/motor current	1.15A	1.15A
Max fan rpm	1500 rpm	1500 rpm
Motor power	0.135 kW	0.135 kW

EPD SERIES

MODEL #	Item #	DESCRIPTION	Installed Cord? Y/N	Motor Type	VOLTAGE	PHASE
EPD150LR	412951	Industrial Dehumidifier - 150 pint - Low Grain Refrigeration	Y	AC	120	1~
EPD180CR	412952	Industrial Dehumidifier - 180 pint - Standard Refrigeration	Y	AC	120	1~
EPD190LR	412953	Industrial Dehumidifier - 190 pint - Low Grain Refrigeration	Y	AC	120	1~
EPD250CR	412954	Industrial Dehumidifier - 250 pint - Standard Refrigeration	Y	AC	120	1~

Terms & Conditions



TERMS AND CONDITIONS

Net 30 days from date of invoice on approval of credit, otherwise orders must be prepaid prior to shipping. Customers will be advised immediately when an order exceeds their credit limit so they can rectify the situation and the order can be shipped expediently.

PRODUCT RETURNS

All returns must be authorized by Rambridge prior to shipping any return to our warehouse. Items returned to Rambridge without authorization and/or freight collect will be refused. All returns must be shipped freight prepaid. Items subject to freezing damage must be returned by heated carrier. Any replacement product will have freight prepaid back to your door.

NON-DEFECTIVE RETURNS

Returned non-defective goods will only be accepted within 30 days from the date of purchase and must be in original packaging and in clean, resaleable condition. All non-defective returns will be subject to a 15% restocking charge unless otherwise authorized.

WARRANTY RETURNS

Warranty returns must be accompanied by the original end user bill of sale, a clear explanation of why the product is being returned under warranty and a brief description of any inspection and evaluation performed prior to its return. Acceptance of a warranty return does not constitute acknowledgement of warranty given. Credit or replacement will only be authorized after warranty confirmation by the manufacturer or supplier. We reserve the right to issue credit or product, in lieu of credit. All returns should be pre-authorized and freight prepaid.

FREIGHT AND CLAIMS

All orders are shipped F.O.B. our warehouse unless otherwise authorized. If you have a preferred carrier please inform us, otherwise we will ship with the best available carrier for the product being shipped. Heated service is required in the winter for some products. All shipments will be insured unless we are otherwise advised. If you have an account with us and have not completed the freight insurance advisory form please contact us immediately.

CARRIER RESPONSIBILITY

The carrier is responsible for the safe delivery of the goods and any claims for damage or shortages should be made with the carrier.

SHIPMENT INSPECTION

Inspect each shipment as soon as it arrives while the carrier is still present.

WARRANTY AND LIABILITY LIMITATIONS

Rambridge Wholesale Supply makes no warranties, expressed or implied, including without limitation the implied warranties of merchantability and fitness for a particular purpose and in no event will be liable for any consequential, incidental or indirect damages arising out of the use or inability to use a product. All warranties shall be the warranties of the manufacturer or supplier and shall be limited to either the purchase price or product replacement with the same or equivalent product at the sole discretion of Rambridge.

MINIMUM ORDERS / FREIGHT POLICY

	PREPAID		PREPAID		PREPAID
BRITISH COLUMBIA		ALBERTA		ONTARIO	
-VANCOUVER LOWER MAINLAND	\$ 500.00	- CALGARY	\$ 1000.00	- ALL LOCATIONS	\$ 1500.00
FRASER VALLEY	1500.00	- ALL OTHER	1500.00		
- VANCOUVER ISLAND	1500.00			QUEBEC	
- OKANAGAN	1500.00	SASKATHEWAN / MANITOBA		- ALL LOCATIONS	1000.00
- KOOTNEYS	1500.00	- ALL LOCATIONS	\$ 2000.00		
- ALL OTHER	2000.00			ATLANTIC CANADA	
				- ALL AREAS	2000.00

Please consult us for freight terms on all grow media

CONVERSION FACTORS

1 US gallon is equal to:	1 cup is equal to:	1 tablespoon is equal to:
4 quarts 256 tbsp	8 ounces 0.52 lbs	1/2 ounce 180 drops
8 pints 768 tsp	1/2 pint 0.23 litre	15 ml 15 grams
16 cups 8.34 lbs	16 tbsp 14.4 cu. in.	3 tsp 0.663 cup
128 ounces 231 cu. in.	48 tsp 236 grams	
3.785 litres	236 ml	
1 litre is equal to:		
1000 ml 2.22 lbs	1 mho = 1 Siemen	mg/l = milligrams per litre
2.164 pints 202.88 tsp	1 Siemen = 1000 mS	ppm = parts per million
1000 grams 0.264 gal	1 mS = 1000 uS	mho = conductivity
4.328 cups 1.057 quart	1 mS = 500 ppm	mS = millisiemen
67.63 tbsp	(standard)	uS = microsiemen
	1 mS = 650 ppm	tds = total dissolved solids
	(horticultural)	cc = electrical conductivity
	1 mg/litre = 1 ppm	pH = potential hydrogen



