

**///CODE 3<sup>®</sup>**

**2015+  
FORD F-150  
POLICE RESPONDER<sup>®</sup>  
SOLUTIONS**





POLICE SOLUTIONS / 2015+ FORD F-150 POLICE RESPONDER®



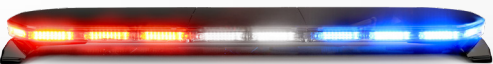
BUILT FOR YOU. BUILT TO LAST.  
BUILT TO SERVE.

When you are on shift, rely on Code 3 emergency warning systems to get the job done safely and effectively. Our lighting and warning solutions ensure officers are seen and heard, whether responding to an emergency or rendering assistance in the roadway.

Officers put their lives on the line every day and we are committed to their safety. That is why Code 3 has engineered and developed the most advanced emergency solutions over the past 48 years.

The latest emergency warning technology is here and we have selected the following products that are ideal for the 2015+ Ford F-150 Police Responder®. Explore your options and upfit the fleet with confidence.

A



**COVERT™ - MATRIX® ENABLED**  
52" LED LIGHTBAR / COMPACT, LOW PROFILE  
12V | Unlimited flash patterns  
Dual- and tri-color options  
Class I (SAE J595, J845), CA T13



**21 SERIES - MATRIX® ENABLED**  
52" LED LIGHTBAR / DELIVERS OFF-ANGLE PERFORMANCE  
12V | Unlimited flash patterns  
Dual- and tri-color lightheads  
Class I (SAE J595, J845), CA T13, R65, R10, CISPR 25



**C5590 SERIES REFLEX®**  
15" LED MINIBAR  
12-24V | 18 flash patterns  
Single- and split-color options  
SAE Class I, CA T13, CE, R10, RCM, IP69K



**27 SERIES - MATRIX® ENABLED**  
52" LED LIGHTBAR / DUAL REFLECTOR TECHNOLOGY  
12V | Unlimited flash patterns  
Dual- and tri-color lightheads  
Class I (SAE J595, J845), CA T13, R65, CISPR 25



**PURSUIT™**  
53" LED LIGHTBAR / TWO LEVELS OF LIGHTING  
12-24V | 29+ flash patterns  
Powerful LEDs  
Class I (SAE J595, J845), CA T13, CISPR 25



**C5550 SERIES REFLEX®**  
11" LED MICROBAR  
12-24V | 35 Single, 91 Dual patterns  
Sync-capable | Single- and dual-color options  
SAE Class I, CA T13, R10, RCM, IP65, RoHS

B



**CHASE™ SERIES**  
DECK & DASH LIGHTS  
12-24V | 69 Flash patterns  
Dual switch control & adjustable visor  
SAE Class I, CA T13, R10, R65



**XT4 SERIES**  
DECK & DASH LIGHTS  
12-24V | 22 Flash patterns  
Single-color  
SAE Class I, CA T13, R10, R65



**XT6 SERIES**  
DECK & DASH LIGHTS  
12-24V | 22 Flash patterns  
Single- and split-color  
SAE Class I, CA T13, R10, R65



**THIN SUPERVISOR™- MATRIX® ENABLED**  
WINDSHIELD MOUNTED INTERIOR LIGHT  
12-24V | Unlimited flash patterns  
Dual- or tri-color lightheads  
Class I (SAE J595), CA T13

C



**XTP4 SERIES**  
SURFACE MOUNT  
12-24V | 4.7" LED Lighthead  
Single- and dual-color  
SAE Class I, R65, R10, IP67, RoHS



**MR6 SERIES**  
MULTI-MOUNT  
12-24V | 4.7" LED Lighthead  
Single- and dual-color  
SAE Class I, CA T13, R65, R10 (excludes tri), IP67



**CHASE™ SERIES**  
SURFACE MOUNT  
12-24V | 6.4" LED Lighthead  
Dual-color  
SAE Class I, CA T13, R65, R10, RoHS

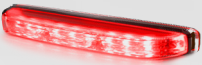


**M180™ / M180L™ SERIES**  
MULTI- AND SURFACE MOUNT  
12-24V | 5.1" LED Lighthead  
Single- and dual-color  
SAE Class I, CA T13, R65, R10, IP67, RoHS



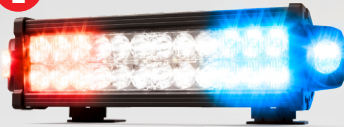
**MEGA THIN™ SERIES**  
SURFACE MOUNT  
12-24V | 4.7" LED Lighthead  
Single-, dual- and tri-color  
SAE Class I, CA T13, R65, R10, IP67, RoHS

D



**CD5051 SERIES**  
MULTI-MOUNT  
12-24V | 35% Slimmer  
Single- and dual-color  
SAE Class I, CA T13, R65, R10, IP67, RoHS

E



**CD9215 SERIES**  
COMBO WARNING & WORKLIGHT  
12-24V | 69 Flash patterns | Amber/White, Blue/White, Red/Blue or Red/White  
Syncs with up to 8 devices | Versatile mounting options with included brackets  
Class I (SAE J845, SAE J595), CA T13, R10, IP67, CISPR 25, RoHS



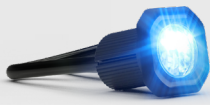
**CW3200 SERIES**  
DOUBLE ROW UTILITY BAR  
12-24V | Deutsch Connector  
High-intensity beam | Versatile mounting options with included brackets  
CE, IP67, RoHS

F



**BULLET™ SERIES**  
CONCEALED WARNING  
12-24V | Single-color  
Self-adhesive - no hardware required  
CE, R10, IP67

G



**MICROPAK SERIES**  
SURFACE MOUNT  
12-24V | Single- and dual-color  
All controls embedded in head light  
SAE Class I, CA T13, IP67, R10, R65



**VIBRANT™ SERIES**  
SURFACE OR CONCEALED  
12-24V | Single-color  
Sync-capable to additional heads  
CE, R10, IP67

H



**DASH EMITTER**  
HIGH AND LOW PRIORITY  
12V | Windshield bracket included  
Compatible with all non-coded emitters  
Will fit above or behind rearview mirror

I



**OUTLINER™ SERIES**  
RUNNING BOARD WARNING  
12V | 32 Flash patterns including steady-burn color 1, color 2  
Each 12" section offers dual-color warning  
Class II ((SAE J595) A, R, W only), Class III (SAE J595 B only), CA T13 (R only), IP67, RoHS

J



**C3900 SERIES SPEAKER**  
INDUSTRY LEADING THIN DESIGN  
C3900EXPNF150-SD - C3900 + Bracket  
12V | 100W | Compact, low profile design  
High efficiency and easy to install  
J1849, CA T13



**C3100 SERIES SPEAKER**  
SIREN SPEAKER  
C3100F15015 and C3100F15015-2  
12V | 100W | Powerful warning  
Easy to install and Banshee® compatible  
J1849, CA T13

## POLICE SOLUTIONS / 2015+ FORD F-150 POLICE RESPONDER®

### OUR PROMISE TO YOU

Code 3 has your back with unparalleled customer service and a five-year, no-hassle warranty on most products. Certain exceptions apply to replacement parts, camera systems, legacy models and non-permanent mount products, which have one-year warranties. Our customer support and Inside Sales Team stand ready to answer any questions you may have.

Code 3 products are tested beyond the industry standard. All lighting and warning systems undergo rigorous testing in the lab and in the real world. From wild temperature swings to prolonged use in extreme environmental conditions, we work tirelessly to deliver the most reliable products in the emergency market. You have a tough job and work hard to keep your communities safe. You deserve the best and most reliable equipment to meet your needs from one shift to the next.



**K**



#### MEGA THIN™ STIK SERIES

LOW-PROFILE, VERSATILE COMBINATION LIGHT

12-24V | Combination emergency, warning, and ArrowStik® light  
Curved end optics for better off-angle performance  
Class I (SAE J595), CA T13, R10, IP67



#### TORUS® NARROWSTIK™ SERIES

TRAFFIC DIRECTING AND WARNING LIGHT

12V | Combination emergency, warning, and ArrowStik® light  
Weather-protected for interior or exterior use  
Class I (SAE J595), CA T13

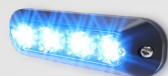


#### XT STIKS SERIES

REAR & SIDE WINDOWS

12-24V | Shock and water resistant  
Synchronized flash pattern are standard  
Class I (SAE J595, SAE J845)

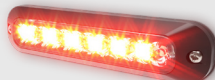
**L**



#### XTP4 SERIES

SURFACE MOUNT

12-24V | 4.7" LED Lighthead  
Single- and dual-color  
SAE Class I, R65, R10, IP67, RoHS



#### XTP6 SERIES

SURFACE MOUNT

12-24V | 6.2" LED Lighthead  
Single- and dual-color  
SAE Class I, R65, R10, IP67, RoHS



#### M180™ SERIES

MULTI-MOUNT

12-24V | 5.1" LED Lighthead  
Single- and dual-color  
SAE Class I, CA T13, R65, R10, IP67, RoHS



#### MEGA THIN™ SERIES

SURFACE MOUNT

12-24V | 4.7" LED Lighthead  
Single-, dual- and tri-color  
SAE Class I, CA T13, R65, R10, IP67, RoHS



#### MR6 SERIES

MULTI-MOUNT

12-24V | 4.7" LED Lighthead  
Single- and dual-color  
SAE Class I, CA T13, R65, R10, IP67

**M**



#### MICROPAK SERIES

SURFACE MOUNT

12-24V | Single- and dual-color  
All controls embedded in head light  
SAE Class I, CA T13, IP67, R10, R65



#### VIBRANT™ SERIES

SURFACE OR CONCEALED

12-24V | Single-color  
Sync-capable to additional heads  
CE, R10, IP67



#### BULLET™ SERIES

CONCEALED WARNING

12-24V | Single-color  
Self-adhesive - no hardware required  
CE, R10, IP67

**O**



#### OUTLINER™ SERIES

RUNNING BOARD WARNING

12V | 32 Flash patterns including steady-burn color 1, color 2  
Each 12" section offers dual-color warning  
Class II (SAE J595) A, R, W only, Class III (SAE J595 B only), CA T13 (R only), IP67, RoHS

**P**



#### CW3010 FOCUS360™

REMOTE SPOTLIGHT

12-24V | 360° Rotation | 135° Tilt range  
Permanent or magnet mount  
CE, R10, IP68 (lighthead), RoHS



#### CW3000 FOCUS360™

REMOTE SPOTLIGHT

12-24V | 350° Rotation | 90° Tilt range  
Permanent or magnet mount  
CE, R10, IP68 (lighthead), RoHS

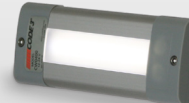
**Q**



#### CW0100 SERIES

HIGH-BOND TAPE MOUNT

12V | Spliceable every 2"  
Several lengths to choose from  
CE, IP65, RoHS



#### CW0400 SERIES

SURFACE MOUNT

12-24V | White or red illumination  
Several lengths to choose from  
CE, R10, IP55, RoHS



#### CW0800 SERIES

90° CORNER MOUNT

12-24V | Waterproof for interior or exterior use  
Several lengths to choose from  
R10, IP67, RoHS



**R**



### Z3S™ SIREN - MATRIX®

#### EASY CONTROL

12V | 200W/300W | 18 outputs, 13 inputs  
Push button or rotary control  
Models available with built-in Banshee®  
J1849, CAT13, R10



### H<sub>2</sub>COVERT™ SIREN

#### HAND-HELD CONTROLLER

12V | 100W/200W  
Push button programmable siren tones  
Undercover installation  
J1849, CAT13, R10



### XCEL™ SIREN

#### PROGRAMMABLE SIREN

12V | 100W OR 200W  
Console mount  
5 Rotary switch positions  
Program CAT13 compliance

**S**



### CC7008-WK

#### 7" QUAD VIEW WIRELESS

12V | Multi-view screen | Remote control  
SD card-enabled recording | Auto pairing  
FCC, CE, R10, RCM, IP69K (camera), RoHS



### CA248

#### UNIVERSAL MOUNT

12-48V | 97 dB(A)  
Vertical or horizontal mounting  
SAE J994

**T**



### SWITCH NODE - MATRIX®

#### MORE OUTPUT CONTROL

12-24V | Offers 16 additional outputs  
Easy 2-wire install connection to Z3S or SIB  
IP69K, R10



### SPLITTER - MATRIX®

#### ENABLES 3+ END NODES

10-32V | 2 CAT5 inputs, 4 CAT5 outputs  
Expand total number of supported  
Matrix end nodes in a system



### OBD MODULE - MATRIX®

#### ON BOARD DIAGNOSTICS

12V | Matrix Enabled | Z3S-OBD-PIU-G  
Can be used with Z3 Siren or SIB  
Reacts automatically to vehicle signals  
Provides seamless cable connectivity

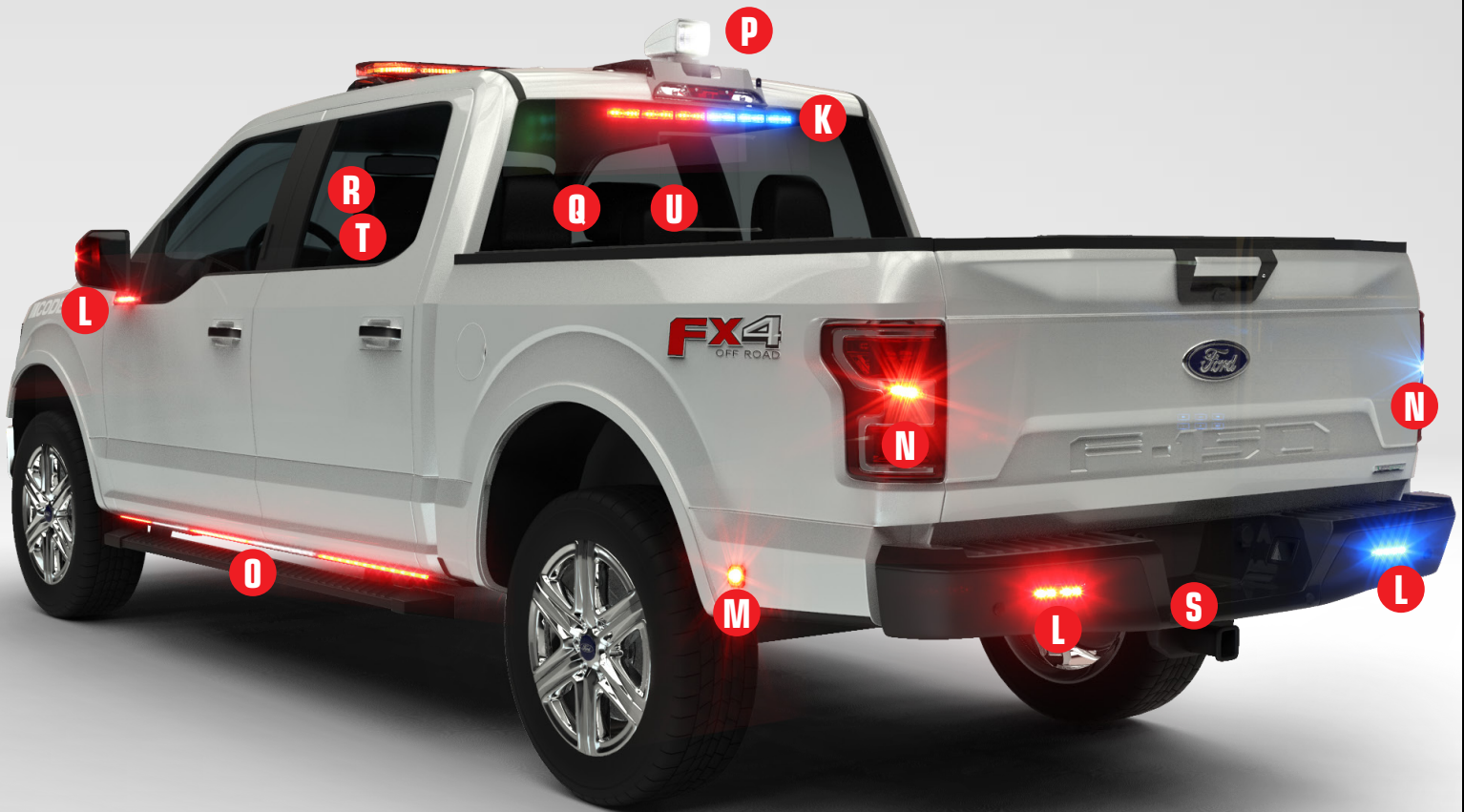
**U**

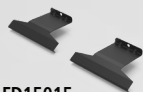


### CT0010

#### ROADSIDE RECHARGEABLE FLASHER KIT

5V | Durable charging case with AC & DC supplied chargers  
360° illumination with top center illumination | Waterproof  
White light run time: 9 hours (when fully charged), perimeter flashes up to 12 hours (when fully charged)



**ACCESSORIES / 2015+ FORD F-150 POLICE RESPONDER®****LIGHTBARS**

**FD15015**  
Mounting Adapter Bracket  
2015+ F150



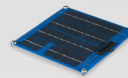
**CZ27PC**  
Photo Cell® - Matrix®  
Covert & 27 Series



**CZ21PC**  
Photo Cell® - Matrix®  
21 Series



**CZ0175**  
Photo Cell® CC  
27 Series



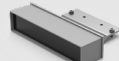
**S13971M**  
Solar Panel  
Covert, 21 & 27 Series



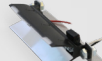
**CZ2500JB**  
Junction Box  
Pursuit



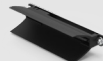
**CZ2501USB**  
USB-CAN  
Pursuit



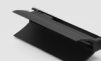
**E795LP-LX**  
LED Infrared Emitter  
Covert, 21 & 27 Series



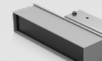
**NPE1000**  
N-3 Strobe Emitter  
Covert, Pursuit, 21 & 27 Series



**CZ25NPE-L**  
Nova Emitter, Passenger  
Pursuit



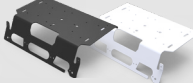
**CZ25NPE-R**  
Nova Emitter, Driver  
Pursuit



**CZ21OPT**  
Bracket, LP Emitter  
21 Series

**C5590 / C5550 SERIES**

**EZ1000B-FH / W-FH**  
3rd Brake Light Platform  
2015+ F150 - Halogen



**EZ1001B-FL / W-FL**  
3rd Brake Light Platform  
2015+ F150 - LED



**CZ5500BKT**  
C5550 Mounting Bracket

**THIN SUPERVISOR™**

**CZ3904**  
Gasket



**SFMTG-TSUNIV**  
Mounting Bracket  
Universal

**OUTLINER™ SERIES**

**RNRBKT-F150**  
Bracket Kit  
2015+ Ford F150

**TORUS® NARROWSTIK SERIES**

**NSTIK-MTG-F150**  
Mounting Bracket  
2015+ F150



**NASLCH2**  
Replacement or Additional  
Programmable Controller



**GMB-F150**  
Grille  
2015+ F150

**XTP SERIES**

**GMB-F150**  
Grille  
2015-2017 F150, XTP3/XTP4/XTP6



**GMBXT4-F150**  
Grille  
2015+ F150, XTP4



**LXEXLPBKT-CH15**  
License Plate  
2015+ F150, XTP3/XTP4/XTP6  
(blocks trailer plug in rear of vehicle)

**M180™ / MR6 SERIES**

**BSM-BKT-F150**  
Under Mirror  
2015-2020 F150  
(not available for Lariat trim)



**GMB-F150**  
Grille  
2015+ F150



**CHSGRL**  
Grille  
Universal



**MR6LBKT**  
L-Bracket  
Universal



**LXEXLPBKT-CH15**  
License Plate  
2015+ F150



**TRXWIND**  
Side Window  
Universal

**MEGA THIN™ SERIES**

**GMB-F150**  
Grille  
2015-2020 F150  
(not available for Lariat trim)



**GMBXT4-F150**  
Grille  
2015+ F150



**GMBTH15**  
Grille  
2015+ F150



**XT6GRL**  
Grille  
Universal



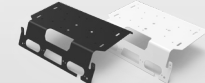
**CZ0142**  
Siren Bracket - Single/Dual  
2015+ F150



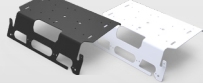
**CZ3108**  
Siren Bracket  
2015+ F150

**CT0010**

**CR0038**  
Replacement Puck  
CT0010

**FOCUS360™ SERIES**

**EZ1000B-FH / W-FH**  
3rd Brake Light Platform  
2015+ F150 - Halogen



**EZ1001B-FL / W-FL**  
3rd Brake Light Platform  
2015+ F150 - LED



**CZ3014**  
Magnet Mount Kit  
Universal



**CZ3010-ADPT**  
Adapter Bracket  
Universal



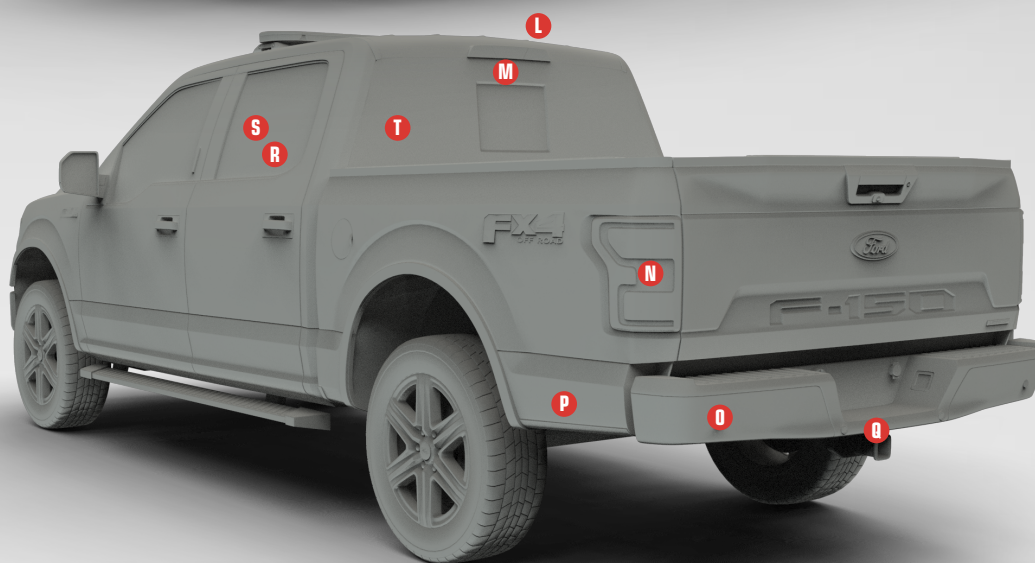
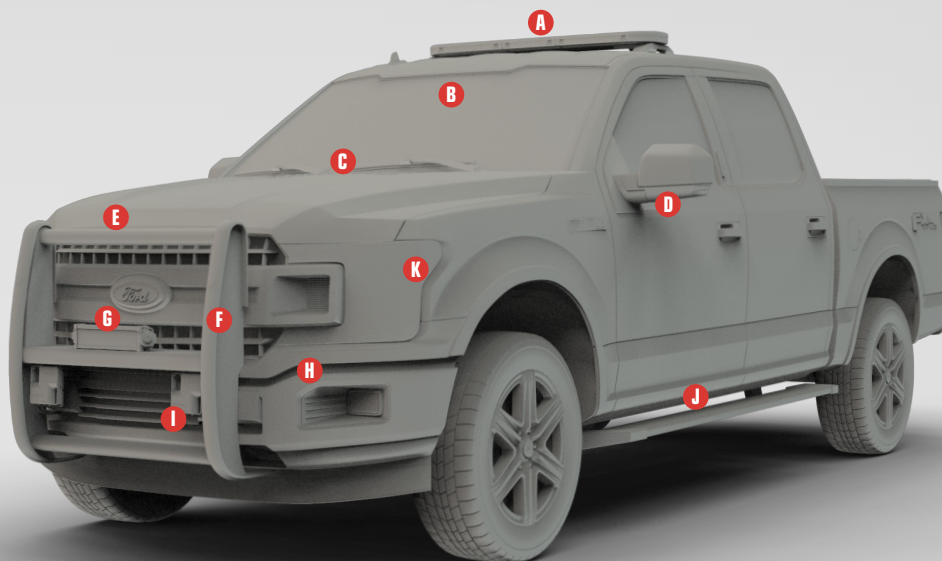
**CR3010**  
Replacement Remote  
Universal



# PRODUCT APPLICATION WORKSHEET



Sales Rep Name \_\_\_\_\_ Agency Name \_\_\_\_\_ Date \_\_\_\_\_  
 Sales Rep Phone # \_\_\_\_\_ Agency Phone # \_\_\_\_\_ Other \_\_\_\_\_



- A \_\_\_\_\_
- B \_\_\_\_\_
- C \_\_\_\_\_
- D \_\_\_\_\_
- E \_\_\_\_\_
- F \_\_\_\_\_
- G \_\_\_\_\_

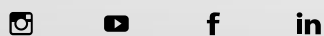
- H \_\_\_\_\_
- I \_\_\_\_\_
- J \_\_\_\_\_
- K \_\_\_\_\_
- L \_\_\_\_\_
- M \_\_\_\_\_
- N \_\_\_\_\_

- O \_\_\_\_\_
- P \_\_\_\_\_
- Q \_\_\_\_\_
- R \_\_\_\_\_
- S \_\_\_\_\_
- T \_\_\_\_\_
- U \_\_\_\_\_

NOTES

**CODE3ESG.COM**

@CODE3INC





**CONNECT WITH US**



**CODE3ESG.COM**

10986 North Warson Road, St. Louis, MO 63114  
(314) 426-2700 / [C3\\_orders@code3esg.com](mailto:C3_orders@code3esg.com)  
(314) 996-2800 / [C3\\_tech\\_support@code3esg.com](mailto:C3_tech_support@code3esg.com)