



BALSAM LOFT

55' SINGLE
4-5 BEDROOM / 3-4 BATH



ELEVATION A
2,476 – 3,526
SQ. FT.

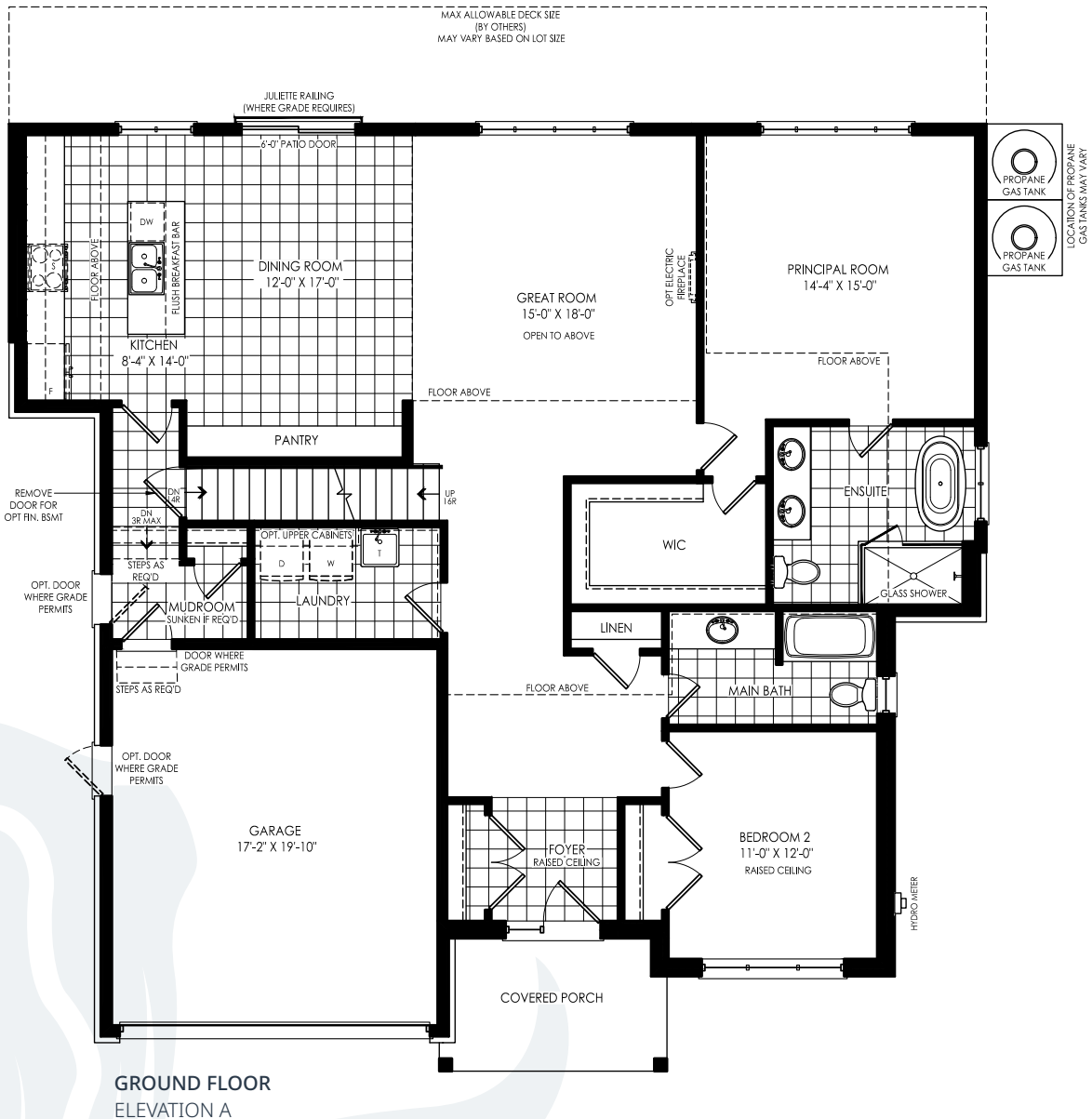


ELEVATION B
2,476 – 3,526
SQ. FT.

BALSAM LOFT

ELEVATION A / 2,476 – 3,526 SQ. FT.

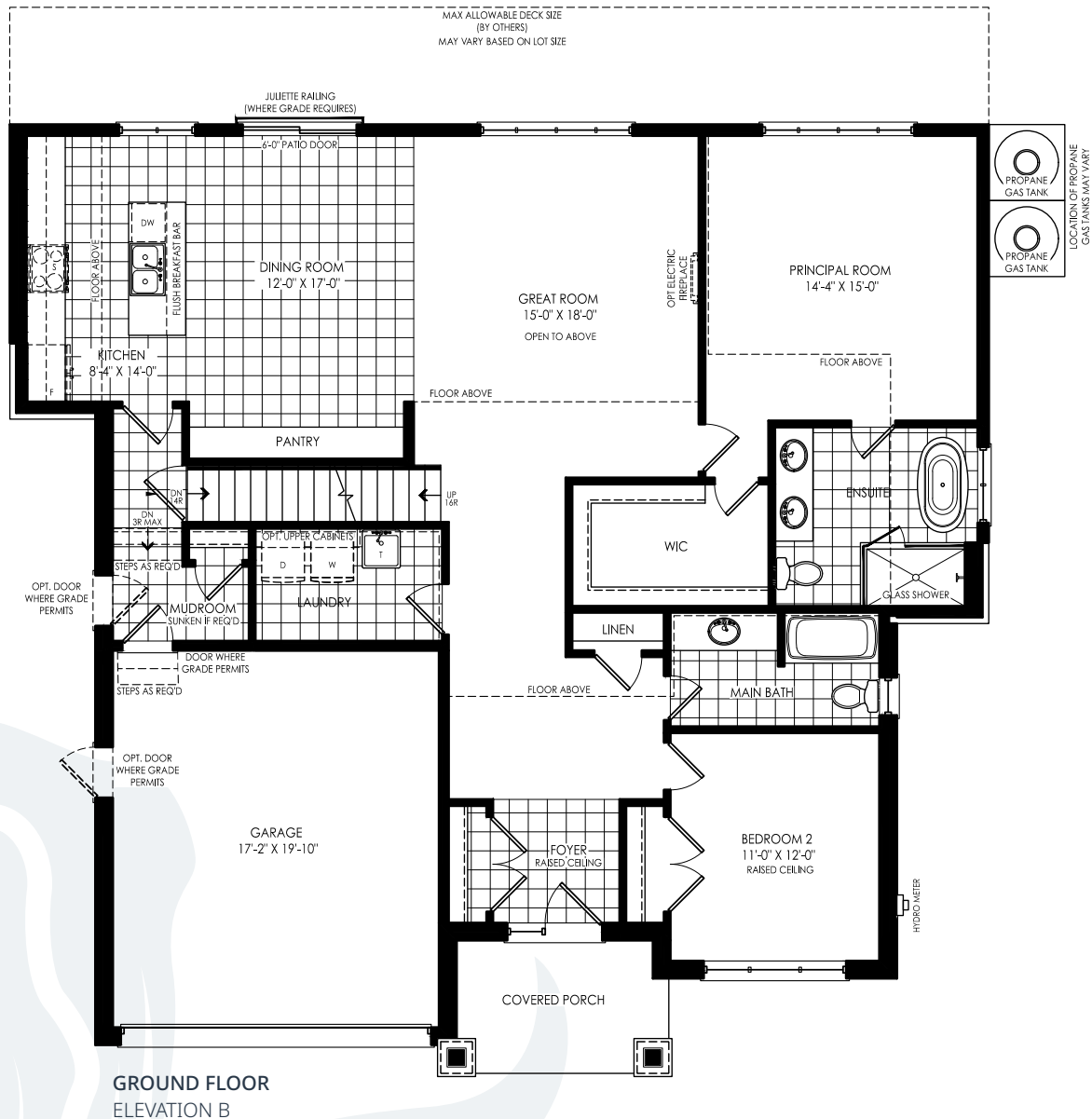
ELEVATION B / 2,476 – 3,526 SQ. FT.



BALSAM LOFT

ELEVATION A / 2,476 – 3,526 SQ. FT.

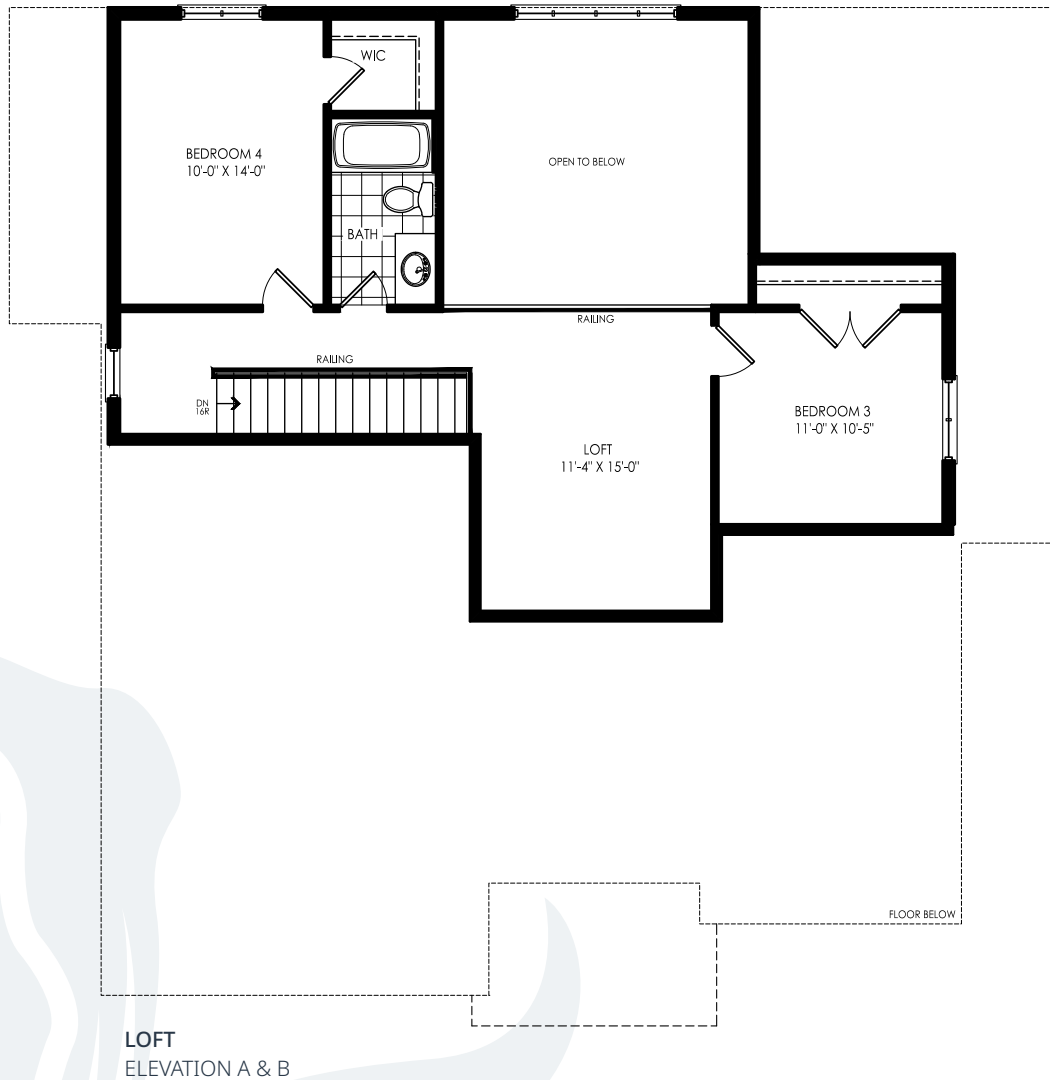
ELEVATION B / 2,476 – 3,526 SQ. FT.



BALSAM LOFT

ELEVATION A / 2,476 – 3,526 SQ. FT.

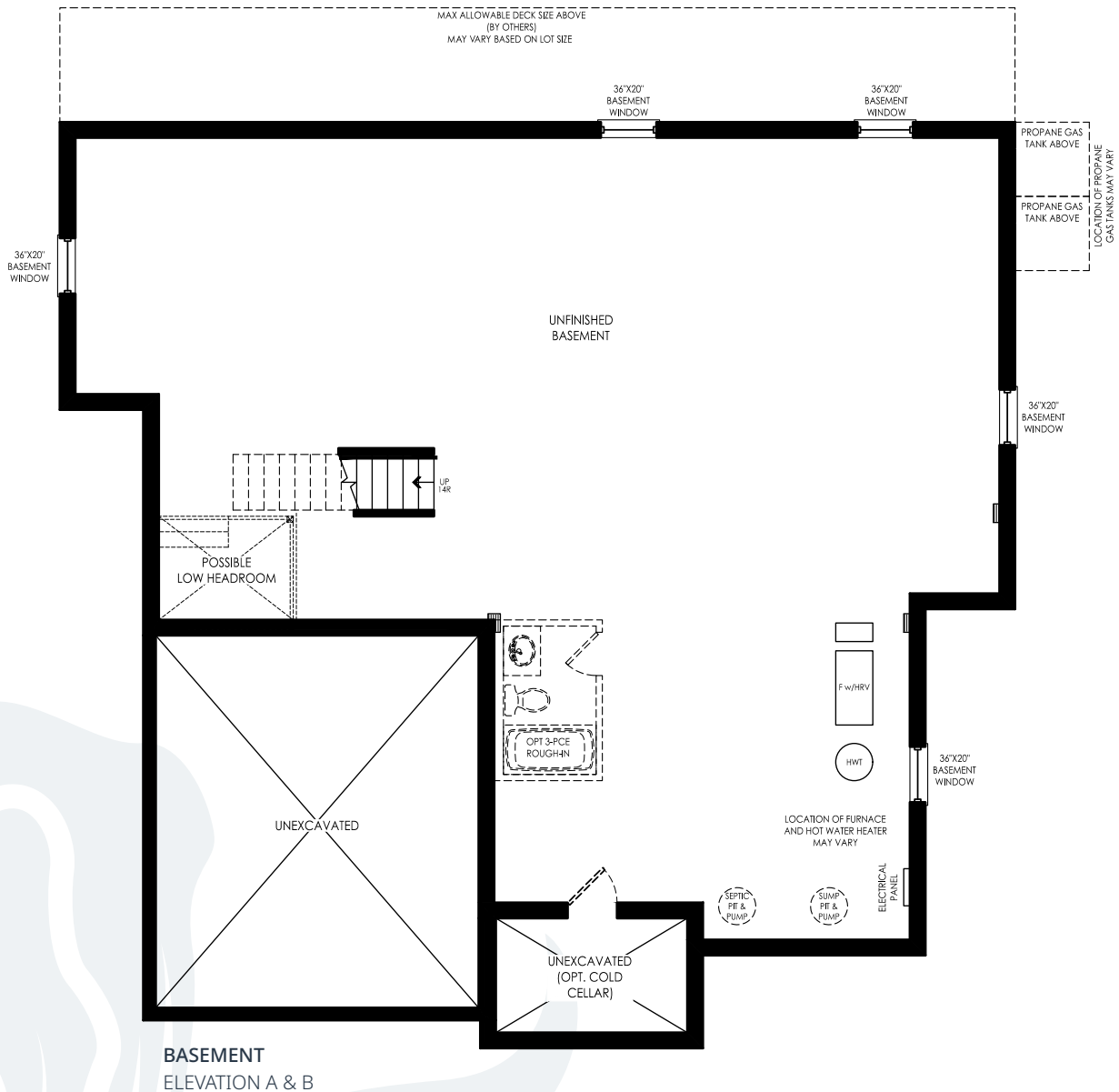
ELEVATION B / 2,476 – 3,526 SQ. FT.



BALSAM LOFT

ELEVATION A / 2,476 – 3,526 SQ. FT.

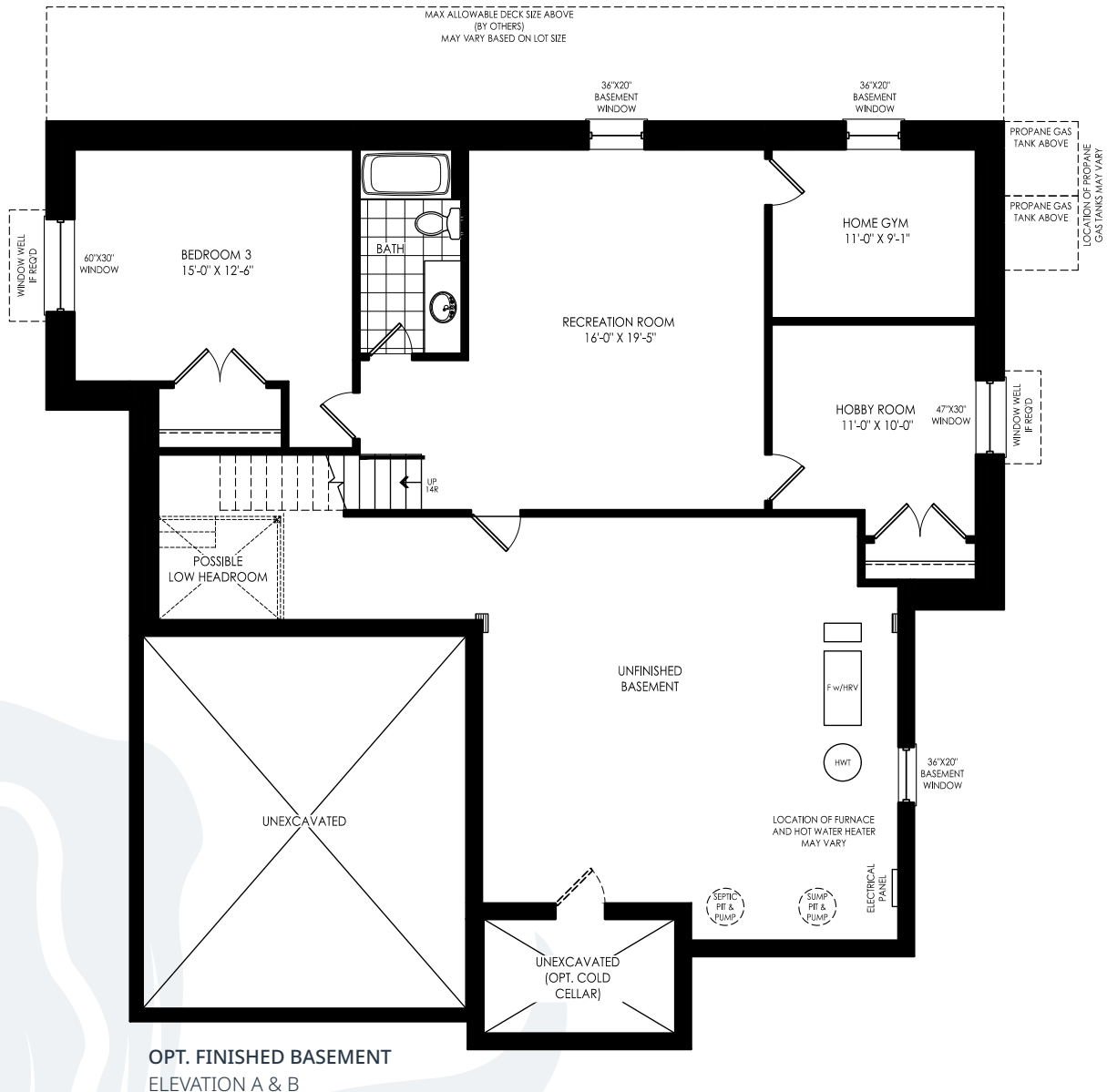
ELEVATION B / 2,476 – 3,526 SQ. FT.



BALSAM LOFT

ELEVATION A / 2,476 – 3,526 SQ. FT.

ELEVATION B / 2,476 – 3,526 SQ. FT.



BALSAM

55' SINGLE
2-4 BEDROOM / 2-3 BATH



ELEVATION A
1,756 – 2,850
SQ. FT.

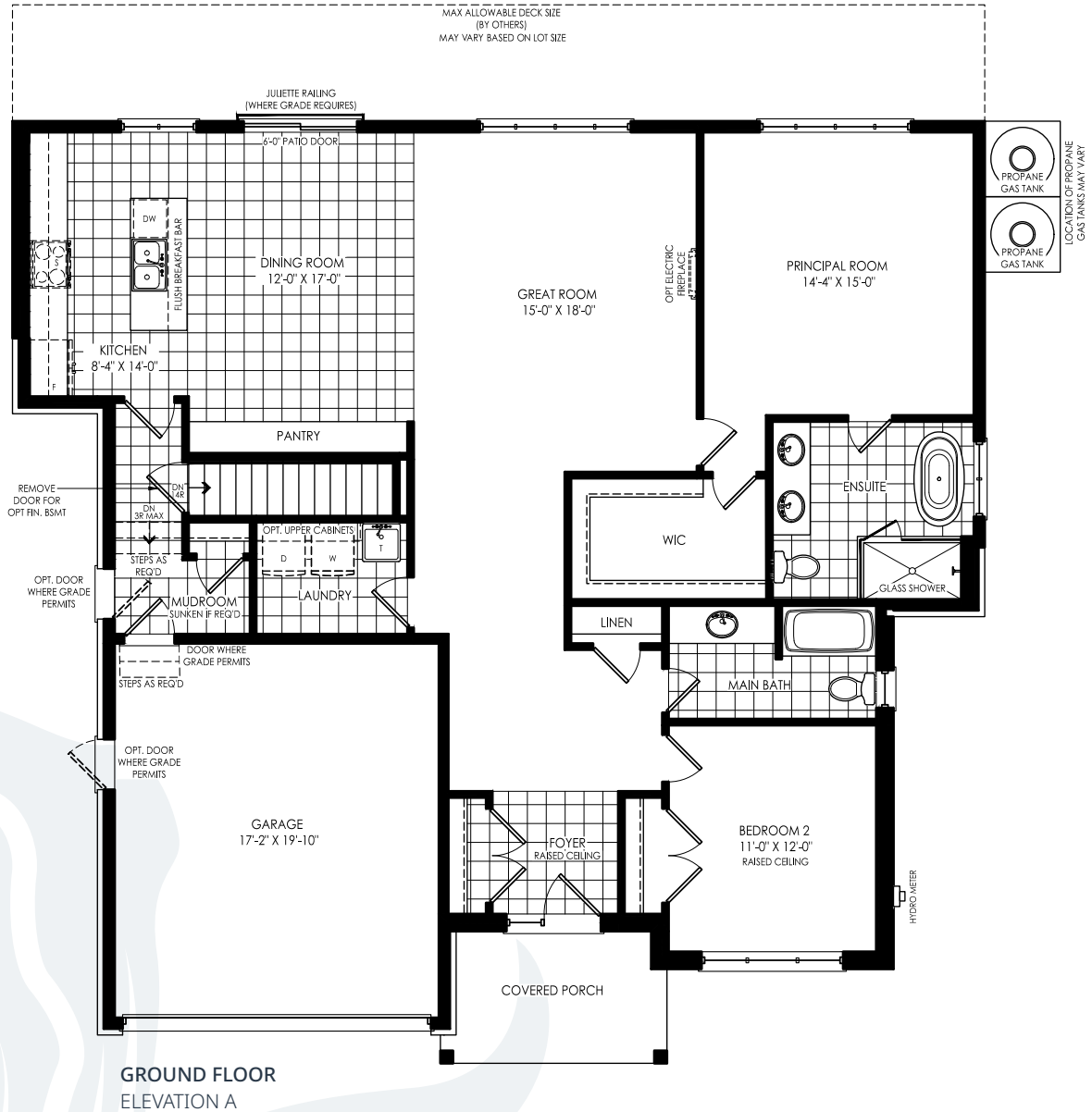


ELEVATION B
1,756 – 2,805
SQ. FT.

BALSAM

ELEVATION A / 1,756 – 2,850 SQ. FT.

ELEVATION B / 1,756 – 2,805 SQ. FT.



BALSAM

ELEVATION A / 1,756 – 2,850 SQ. FT.

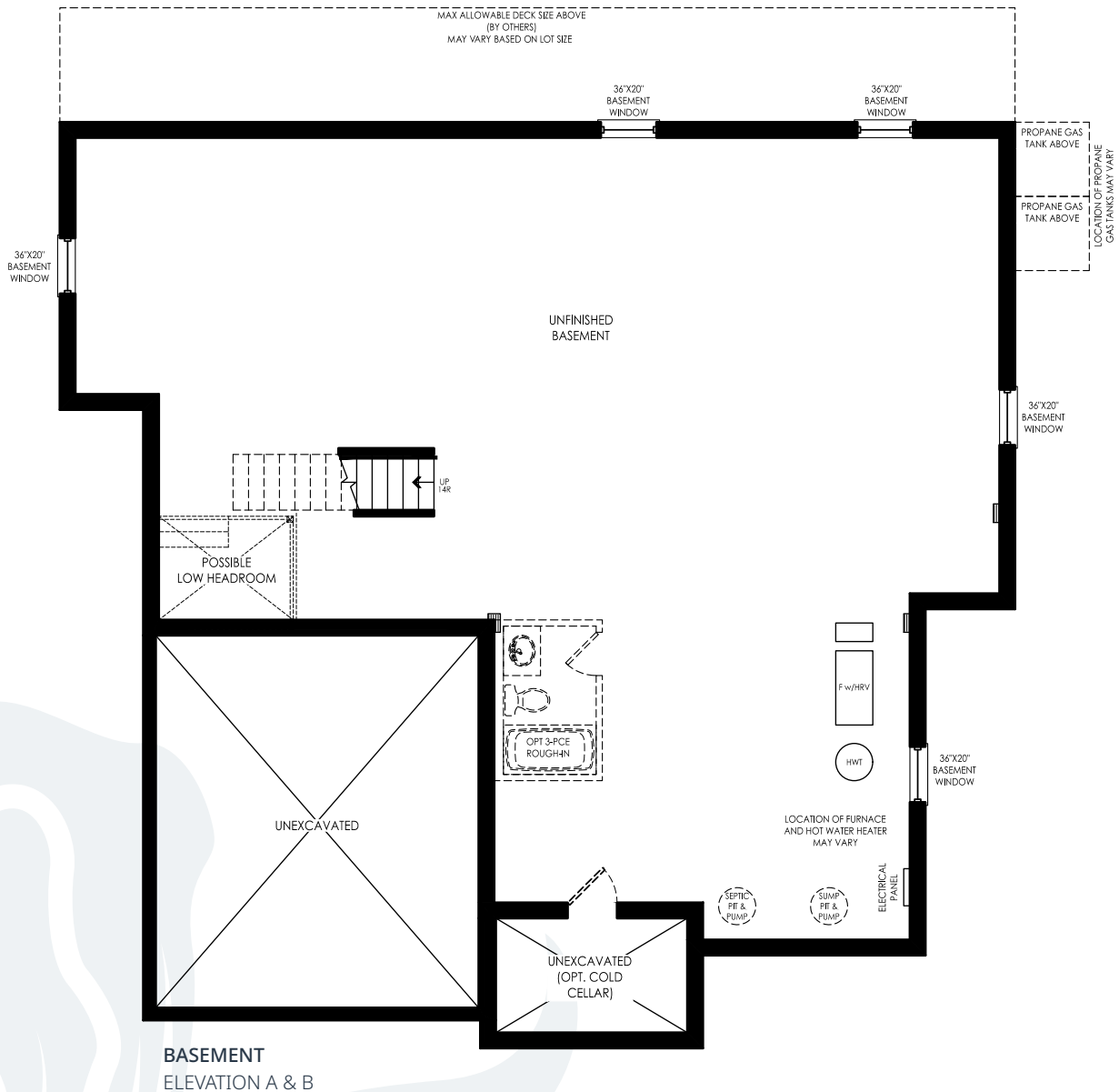
ELEVATION B / 1,756 – 2,805 SQ. FT.



BALSAM

ELEVATION A / 1,756 – 2,850 SQ. FT.

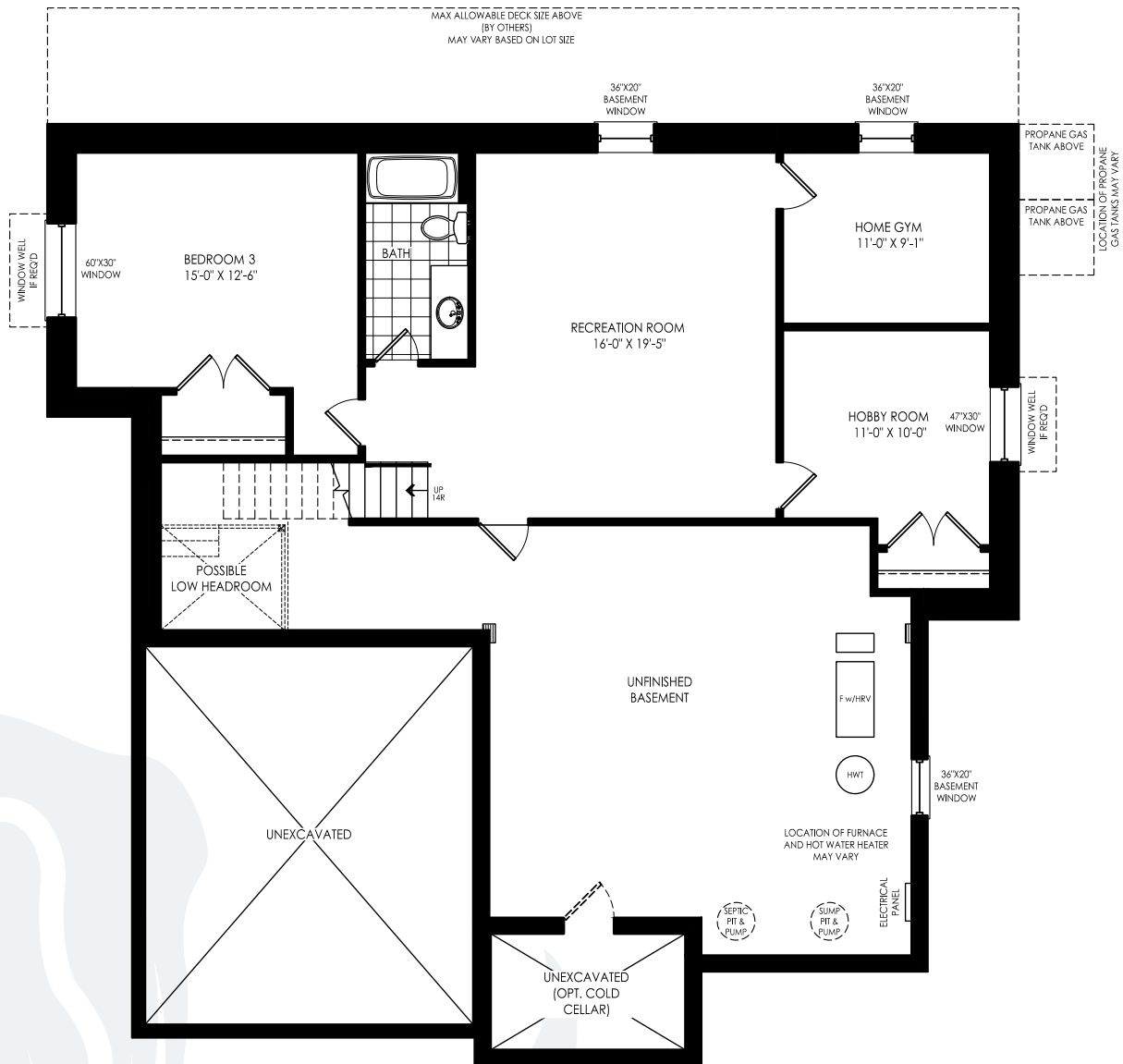
ELEVATION B / 1,756 – 2,805 SQ. FT.



BALSAM

ELEVATION A / 1,756 – 2,850 SQ. FT.

ELEVATION B / 1,756 – 2,805 SQ. FT.



OPT. FINISHED BASEMENT
ELEVATION A & B

BUCKHORN LOFT

55' SINGLE
4-5 BEDROOM / 3-4 BATH



ELEVATION A
2,688 – 3,651
SQ. FT.

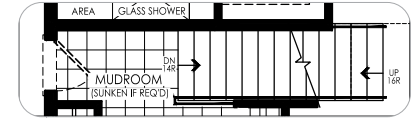
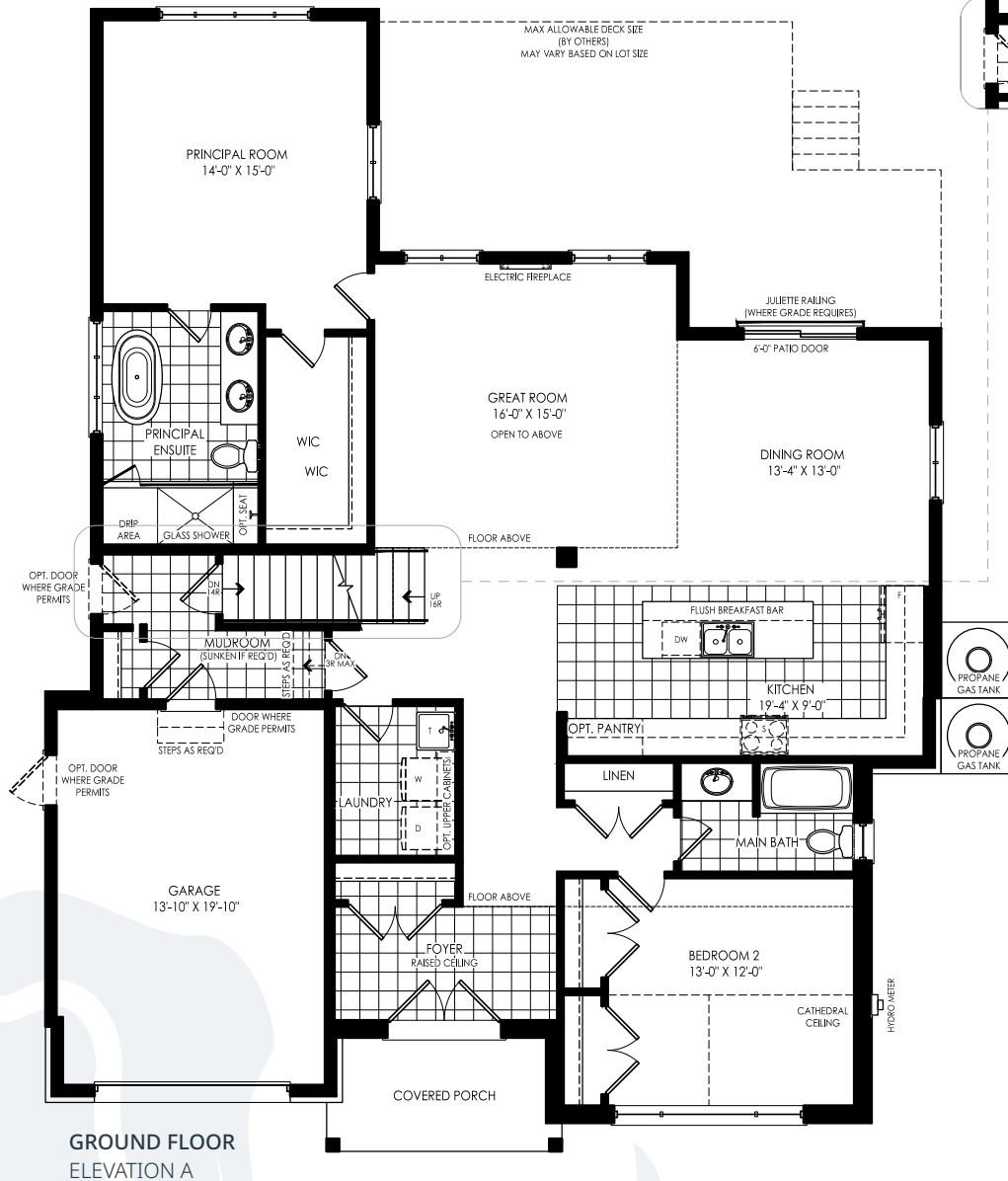


ELEVATION B
2,688 – 3,651
SQ. FT.

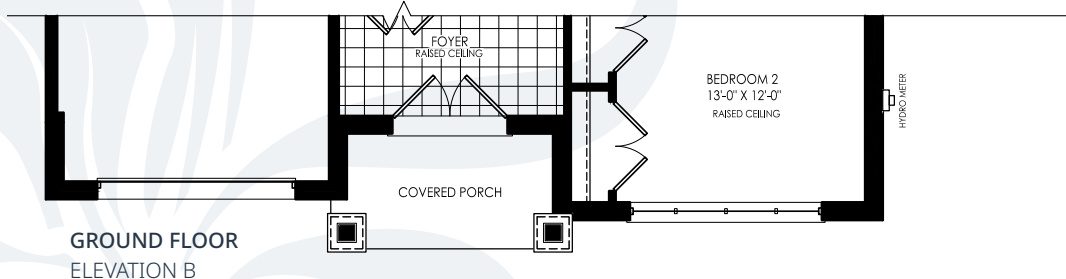
BUCKHORN LOFT

ELEVATION A / 2,688 – 3,651 SQ. FT.

ELEVATION B / 2,688 – 3,651 SQ. FT.



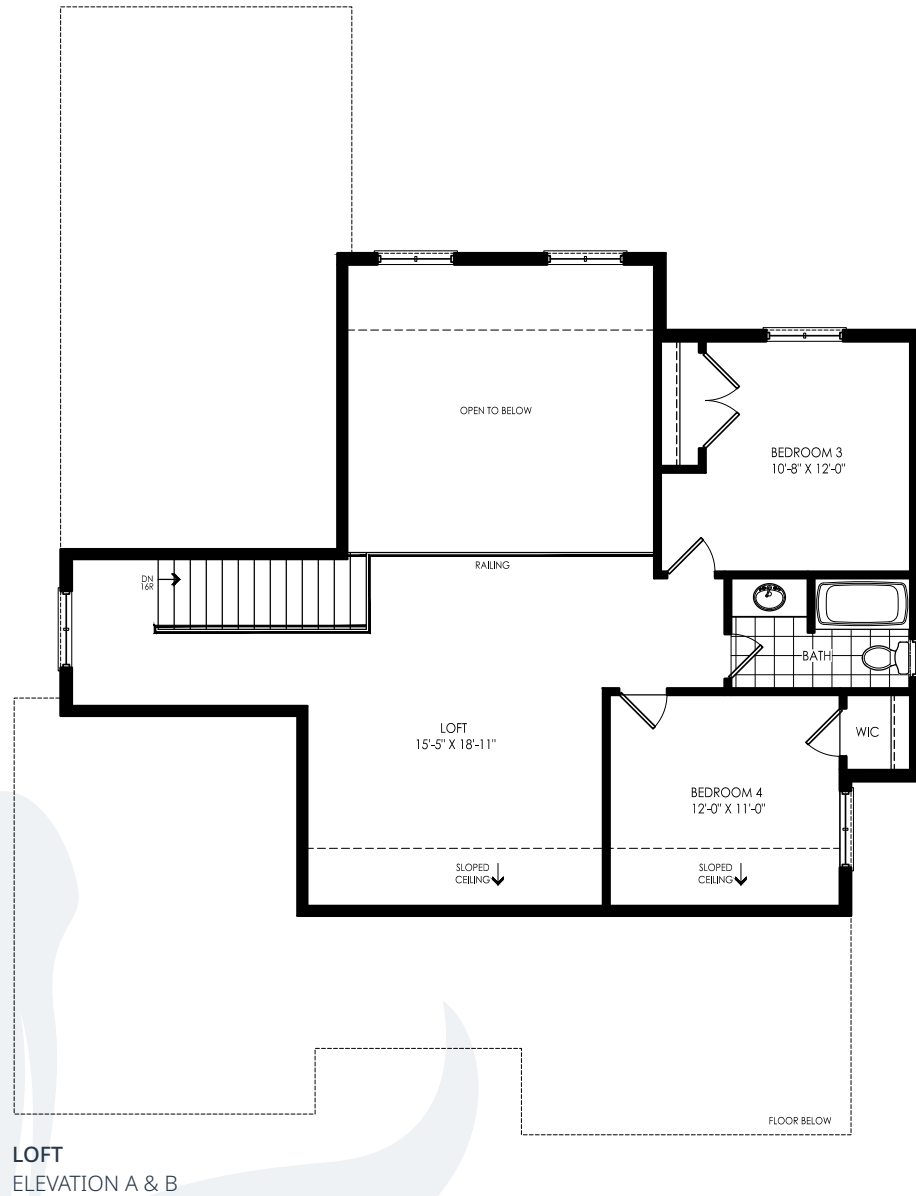
PART. GROUND FLOOR
FOR OPT. FINISHED
BASEMENT
ELEVATION A & B



BUCKHORN LOFT

ELEVATION A / 2,688 – 3,651 SQ. FT.

ELEVATION B / 2,688 – 3,651 SQ. FT.





ELEVATION B / 2,688 – 3,651 SQ. FT.

[illegible]

BASEMENT
ELEVATION A & B

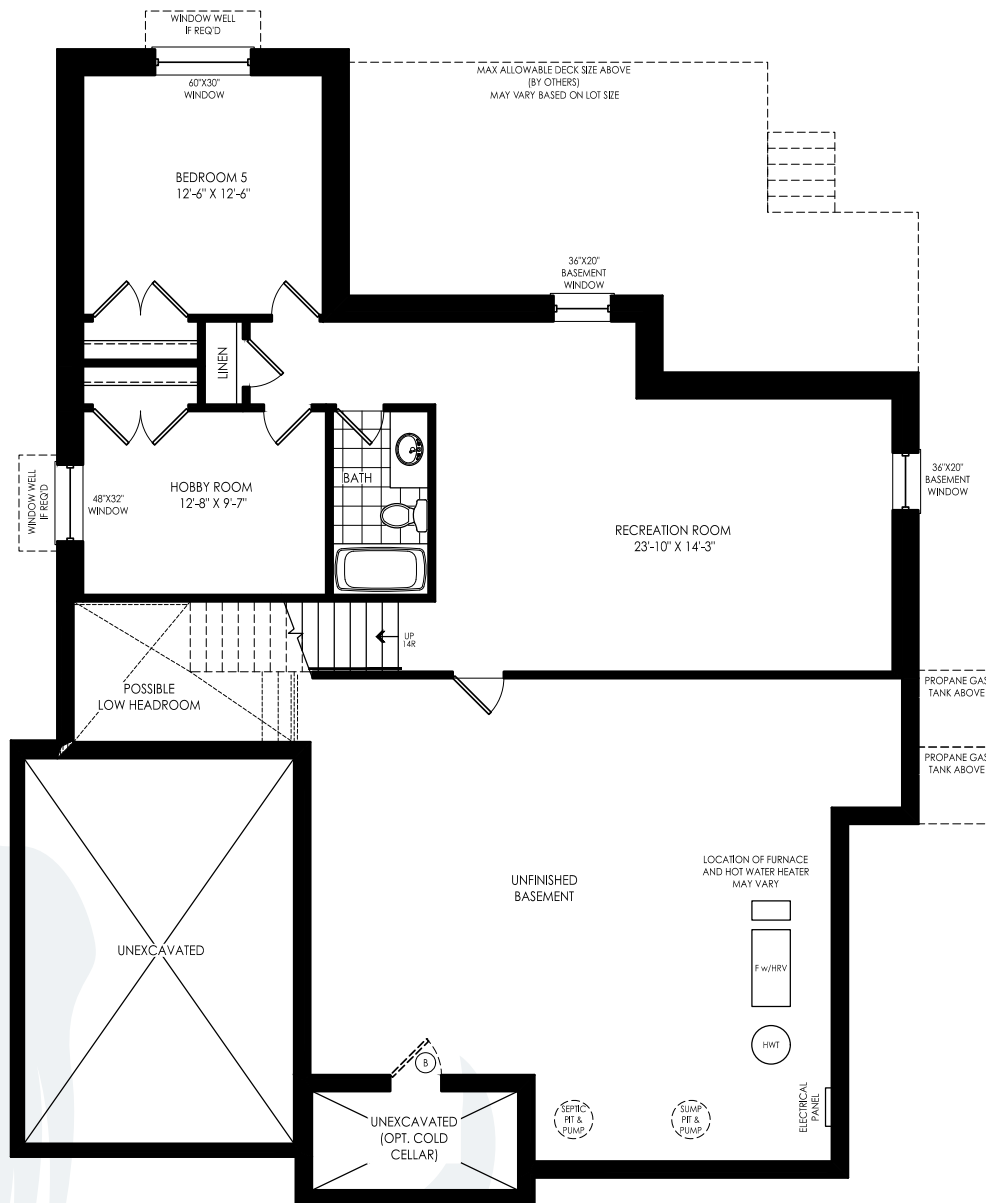


APEX
development group

BUCKHORN LOFT

ELEVATION A / 2,688 – 3,651 SQ. FT.

ELEVATION B / 2,688 – 3,651 SQ. FT.



OPT. FINISHED BASEMENT
ELEVATION A & B

BUCKHORN

55' SINGLE
2-4 BEDROOM / 2-3 BATH



ELEVATION A
1,811 - 2774
SQ. FT.

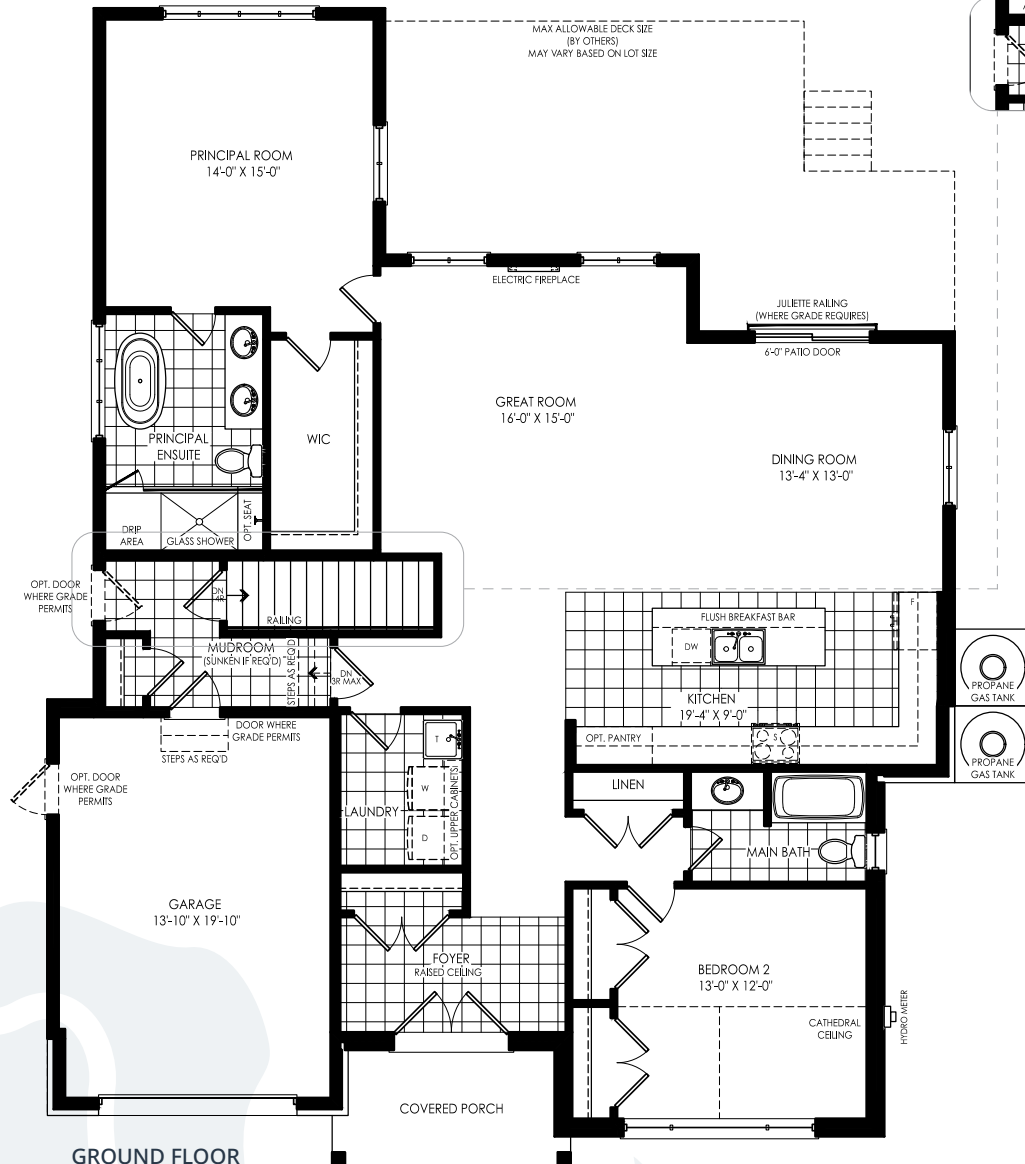


ELEVATION B
1,811 - 2774
SQ. FT.

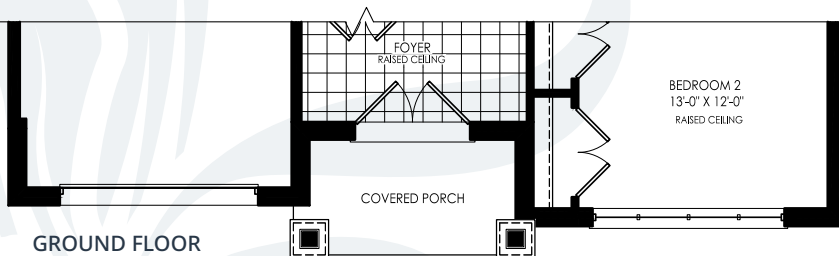
BUCKHORN

ELEVATION A / 1,811 – 2774 SQ. FT.

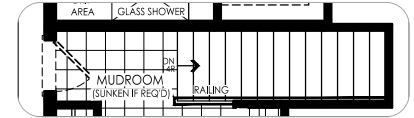
ELEVATION B / 1,811 – 2774 SQ. FT.



GROUND FLOOR
ELEVATION A



GROUND FLOOR
ELEVATION B

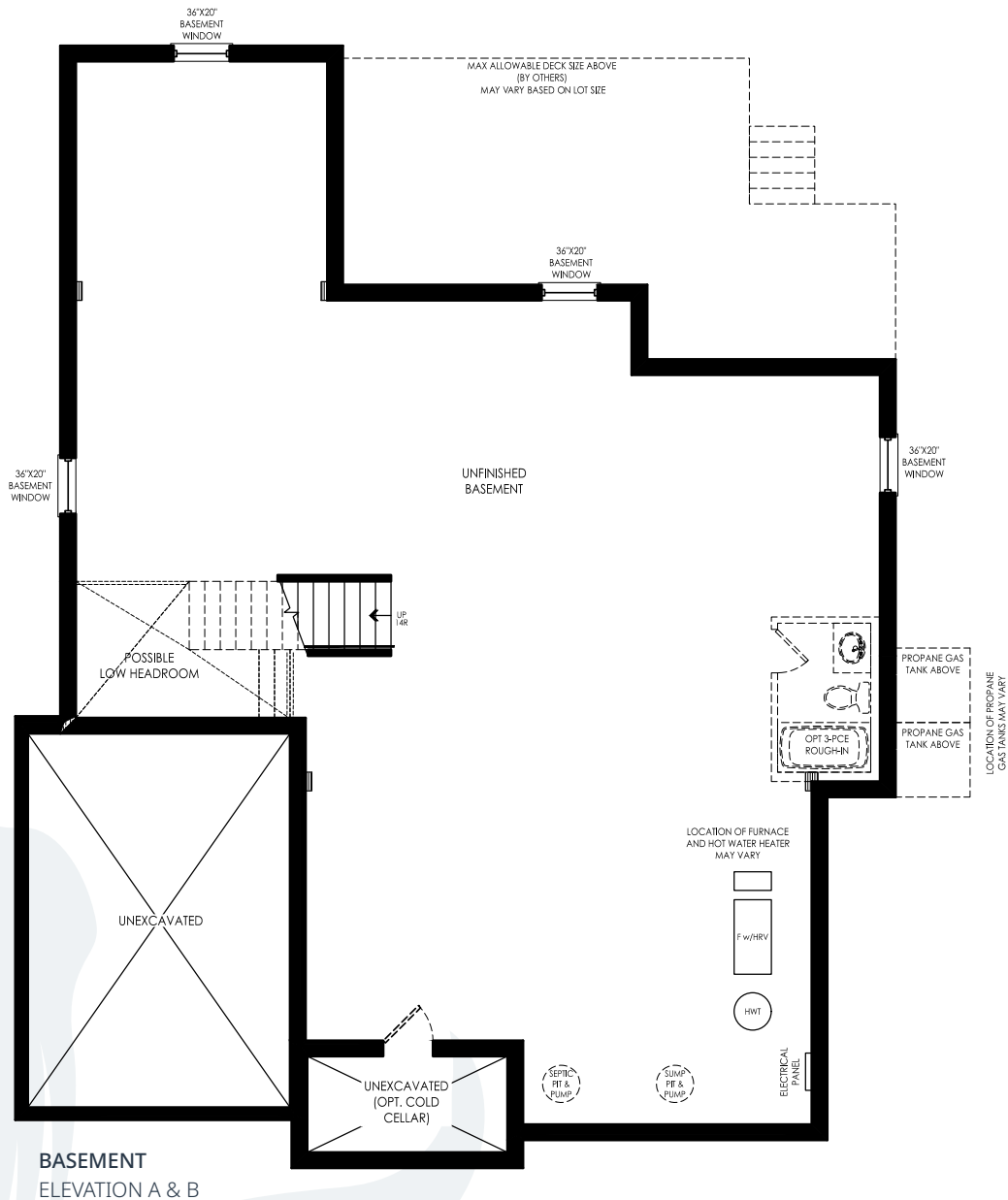


PART. GROUND FLOOR
FOR OPT. FINISHED
BASEMENT
ELEVATION A & B

BUCKHORN

ELEVATION A / 1,811 – 2774 SQ. FT.

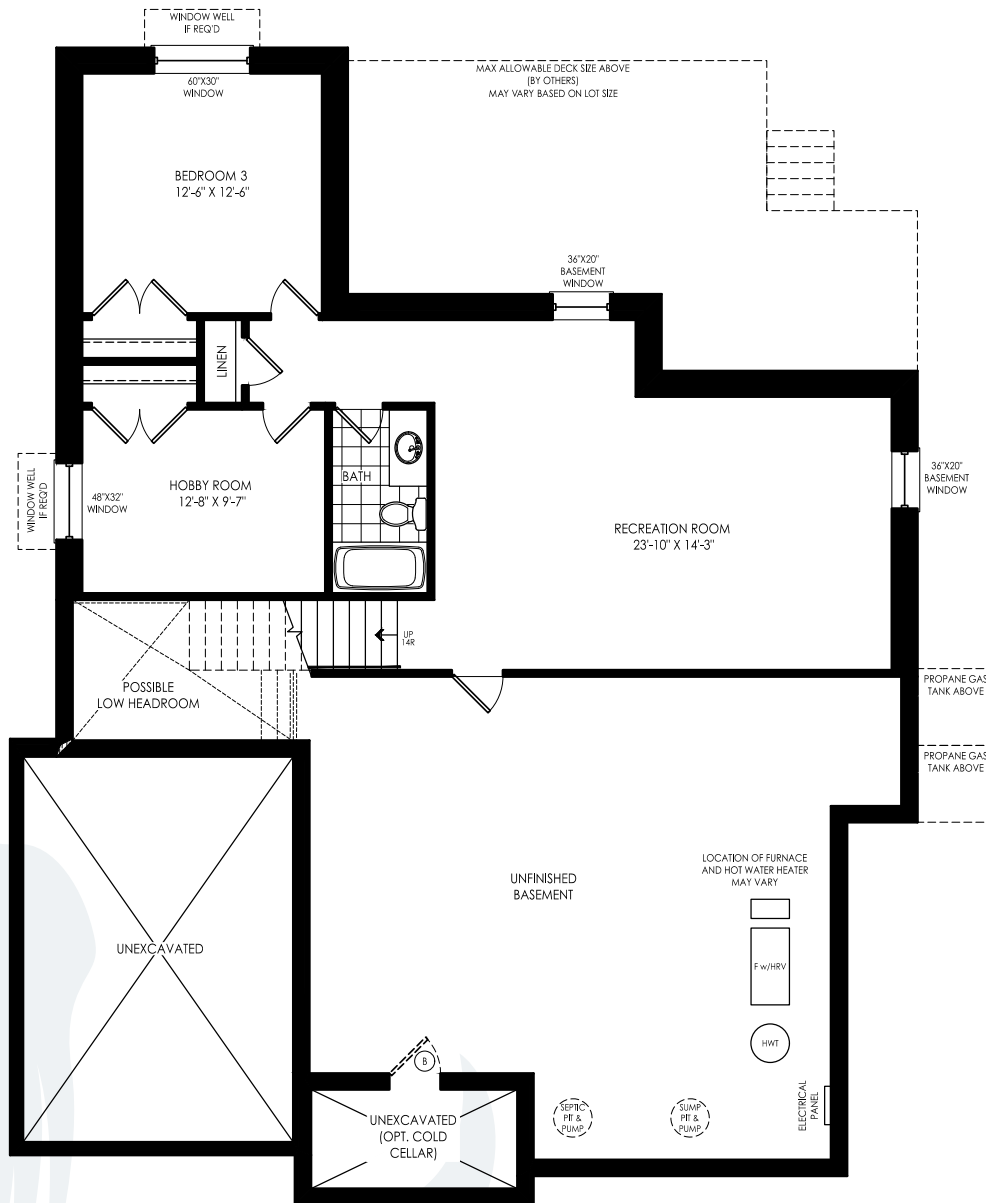
ELEVATION B / 1,811 – 2774 SQ. FT.



BUCKHORN

ELEVATION A / 1,811 – 2774 SQ. FT.

ELEVATION B / 1,811 – 2774 SQ. FT.



OPT. FINISHED BASEMENT
ELEVATION A & B

CAMERON

49' SINGLE
1-4 BEDROOM / 1-3 BATH



ELEVATION A
1,525 – 2,421
SQ. FT.

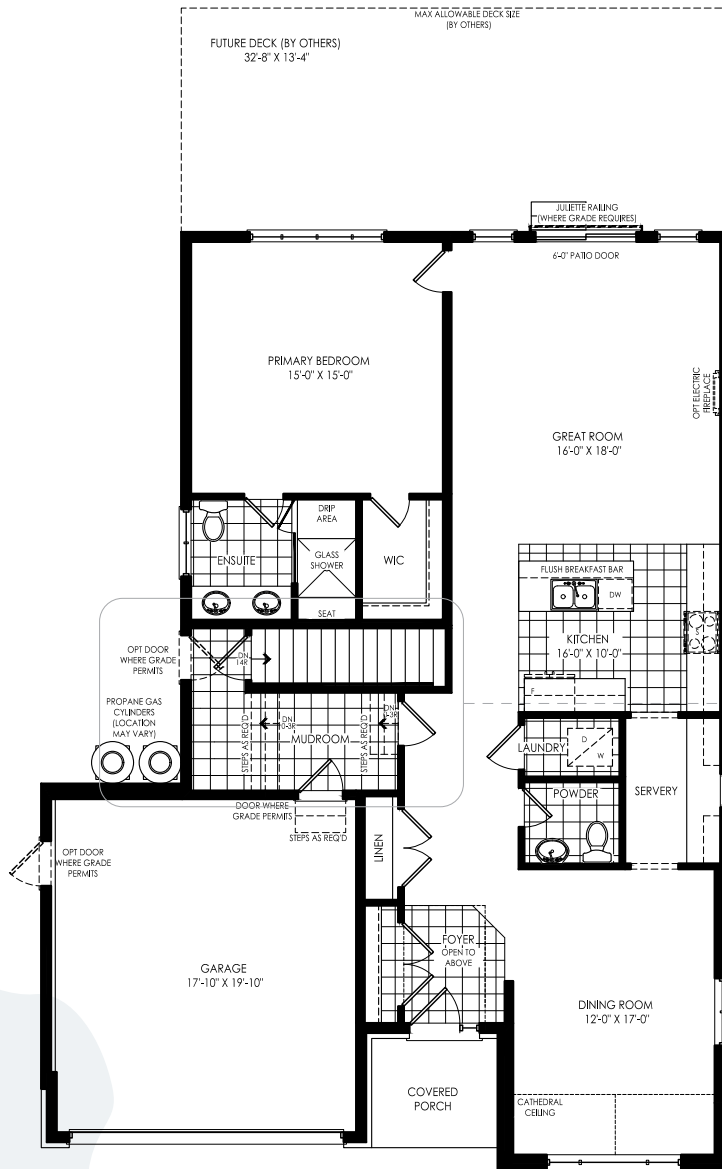


ELEVATION B
1,525 – 2,421
SQ. FT.

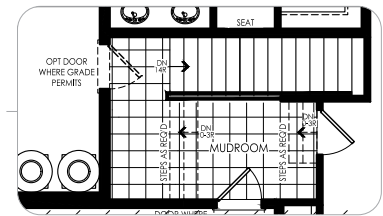
CAMERON

ELEVATION A / 1,525 – 2,421 SQ. FT.

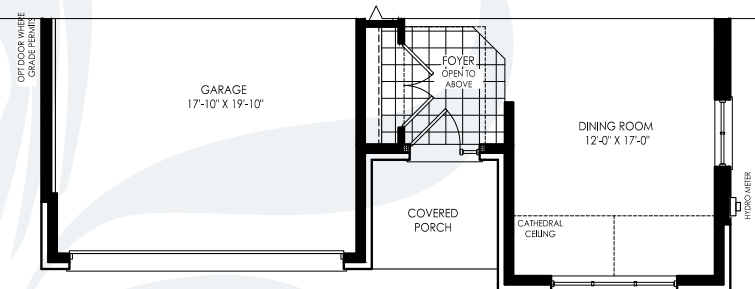
ELEVATION B / 1,525 – 2,421 SQ. FT.



GROUND FLOOR ELEVATION A



PART. GROUND FLOOR FOR
OPT. FINISHED BASEMENT
ELEVATION A & B



GROUND FLOOR
ELEVATION B

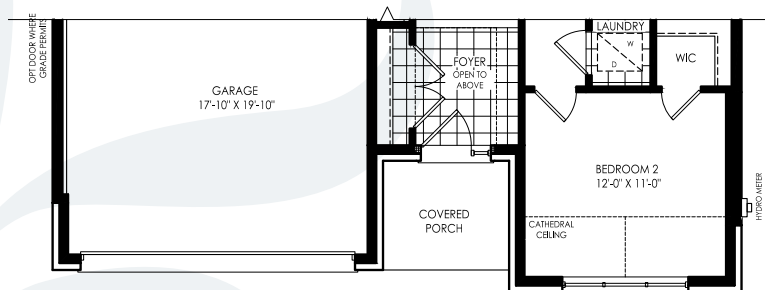
CAMERON

ELEVATION A / 1,525 – 2,421 SQ. FT.

ELEVATION B / 1,525 – 2,421 SQ. FT.



OPT. GROUND FLOOR
ELEVATION A

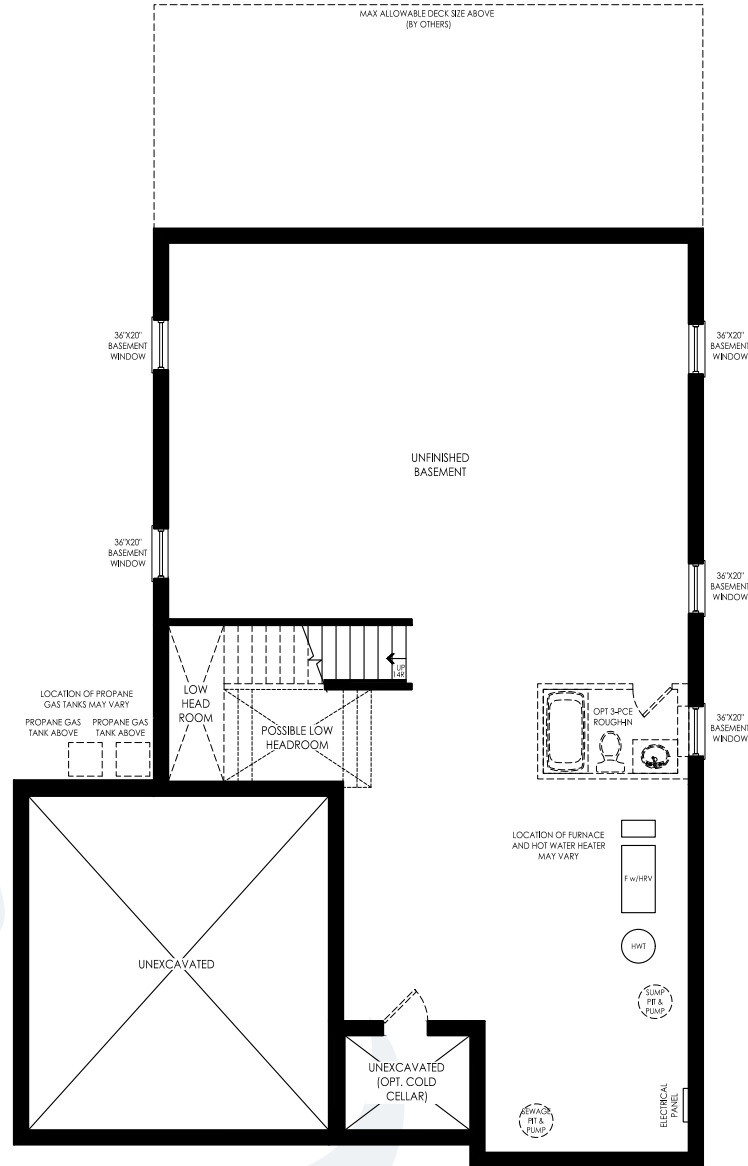


OPT. GROUND FLOOR
ELEVATION B

CAMERON

ELEVATION A / 1,525 – 2,421 SQ. FT.

ELEVATION B / 1,525 – 2,421 SQ. FT.

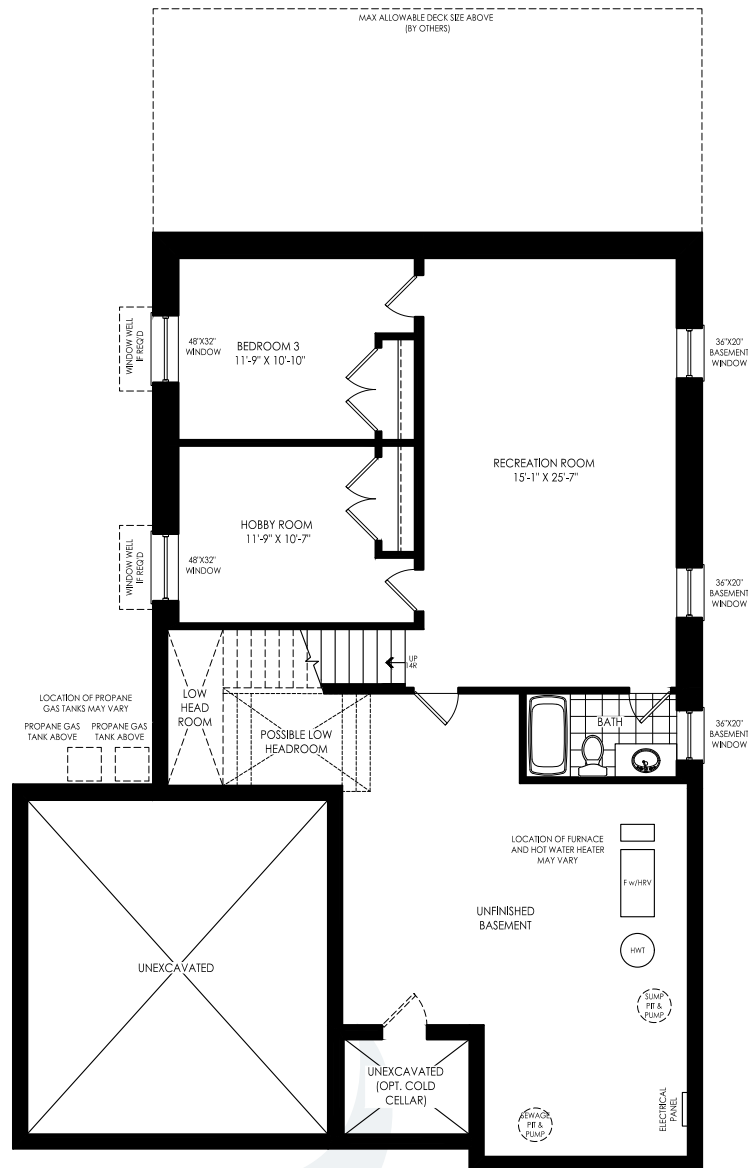


BASEMENT
ELEVATION A & B

CAMERON

ELEVATION A / 1,525 – 2,421 SQ. FT.

ELEVATION B / 1,525 – 2,421 SQ. FT.



OPT. FINISHED BASEMENT
ELEVATION A & B

CAMERON LOFT

49' SINGLE
3-5 BEDROOM / 2-4 BATH



ELEVATION A
2,336 – 3,231
SQ. FT.



ELEVATION B
2,315 – 3,211
SQ. FT.

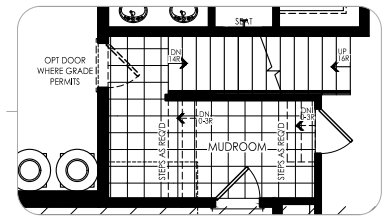
CAMERON LOFT

ELEVATION A / 2,336 – 3,231 SQ. FT.

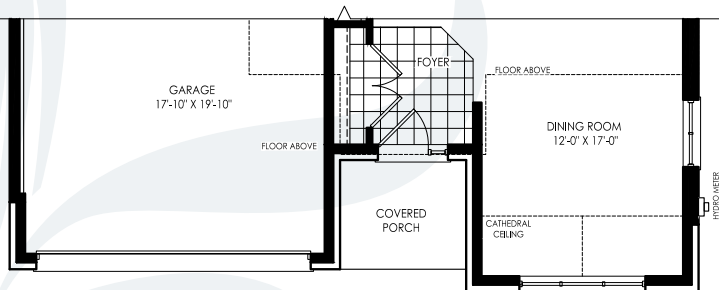
ELEVATION B / 2,315 – 3,211 SQ. FT.



GROUND FLOOR FOR LOFT
ELEVATION A



PART. GROUND FLOOR FOR
OPT. FINISHED BASEMENT
ELEVATION A & B

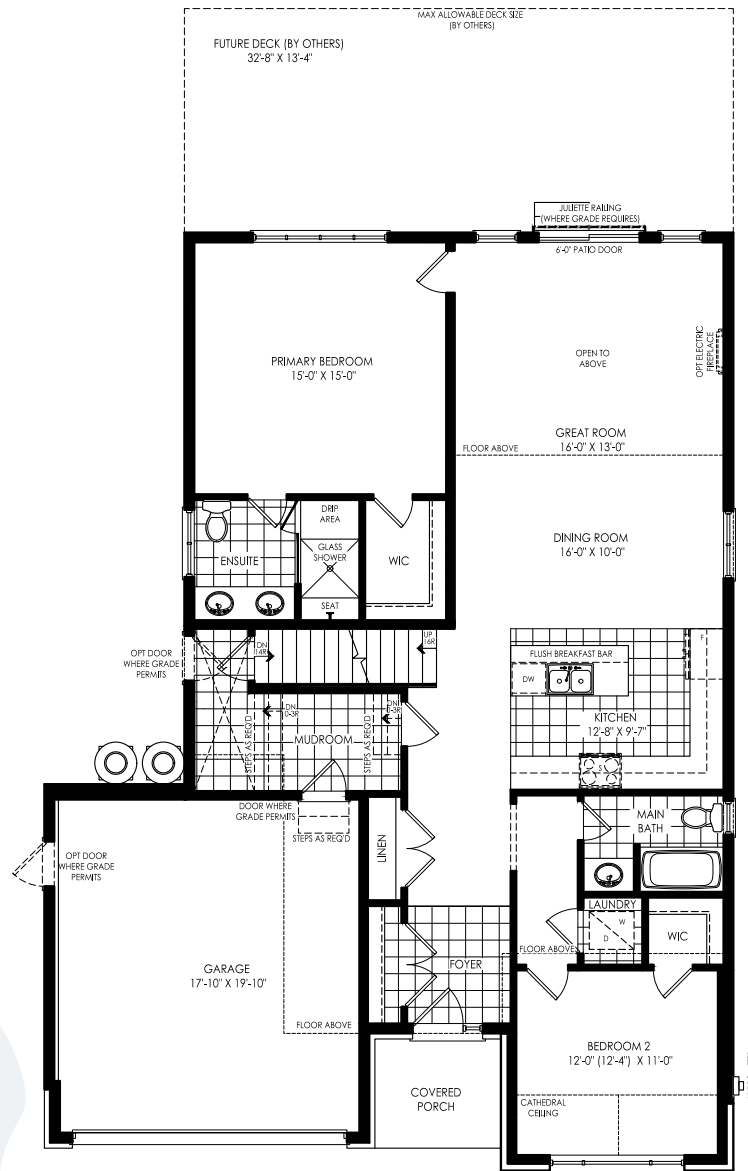


GROUND FLOOR FOR LOFT
ELEVATION B

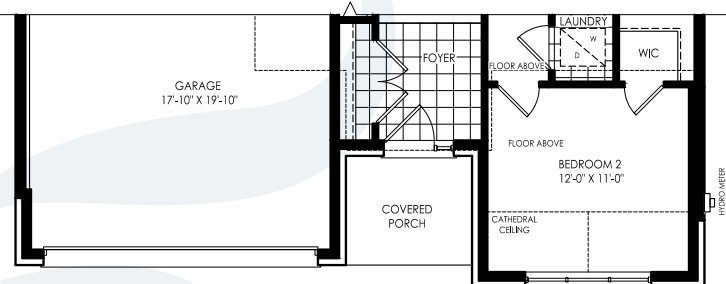
CAMERON LOFT

ELEVATION A / 2,336 – 3,231 SQ. FT.

ELEVATION B / 2,315 – 3,211 SQ. FT.



OPT. GROUND FLOOR FOR LOFT
ELEVATION A

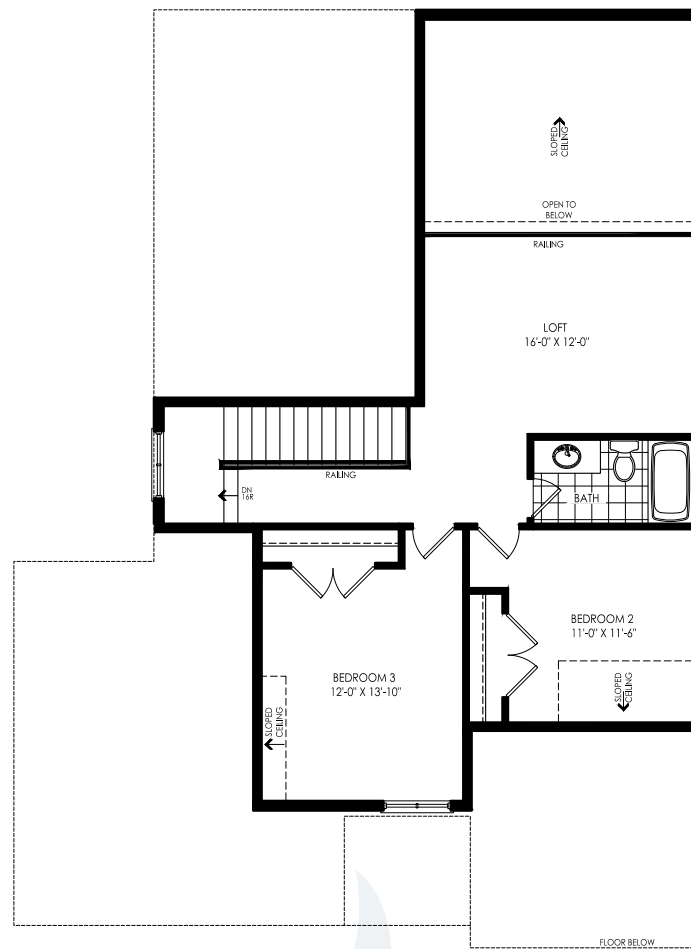


OPT. GROUND FLOOR FOR LOFT ELEVATION B

CAMERON LOFT

ELEVATION A / 2,336 – 3,231 SQ. FT.

ELEVATION B / 2,315 – 3,211 SQ. FT.

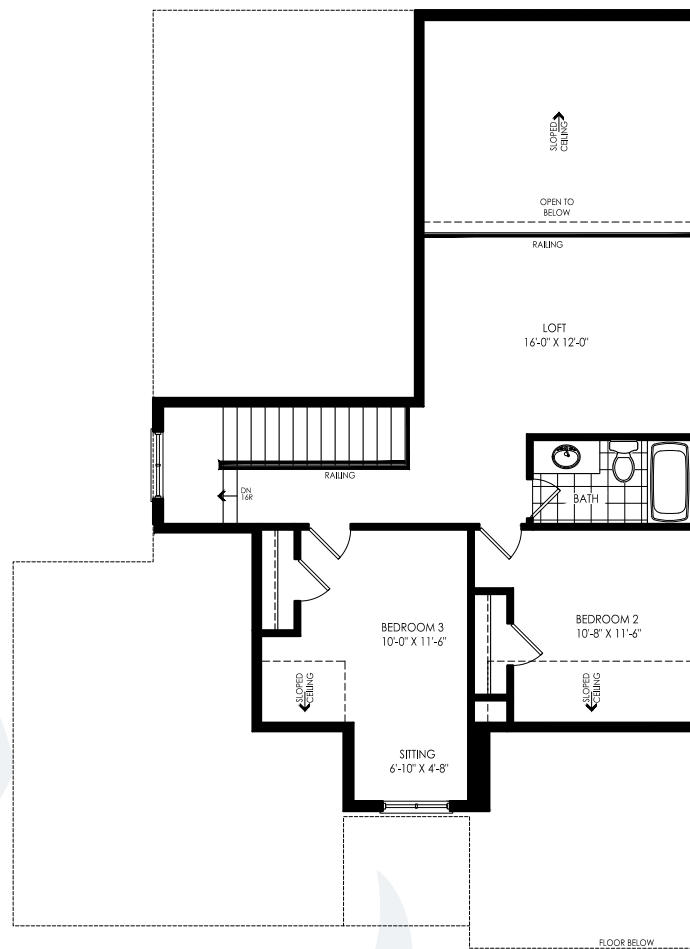


LOFT
ELEVATION A

CAMERON LOFT

ELEVATION A / 2,336 – 3,231 SQ. FT.

ELEVATION B / 2,315 – 3,211 SQ. FT.

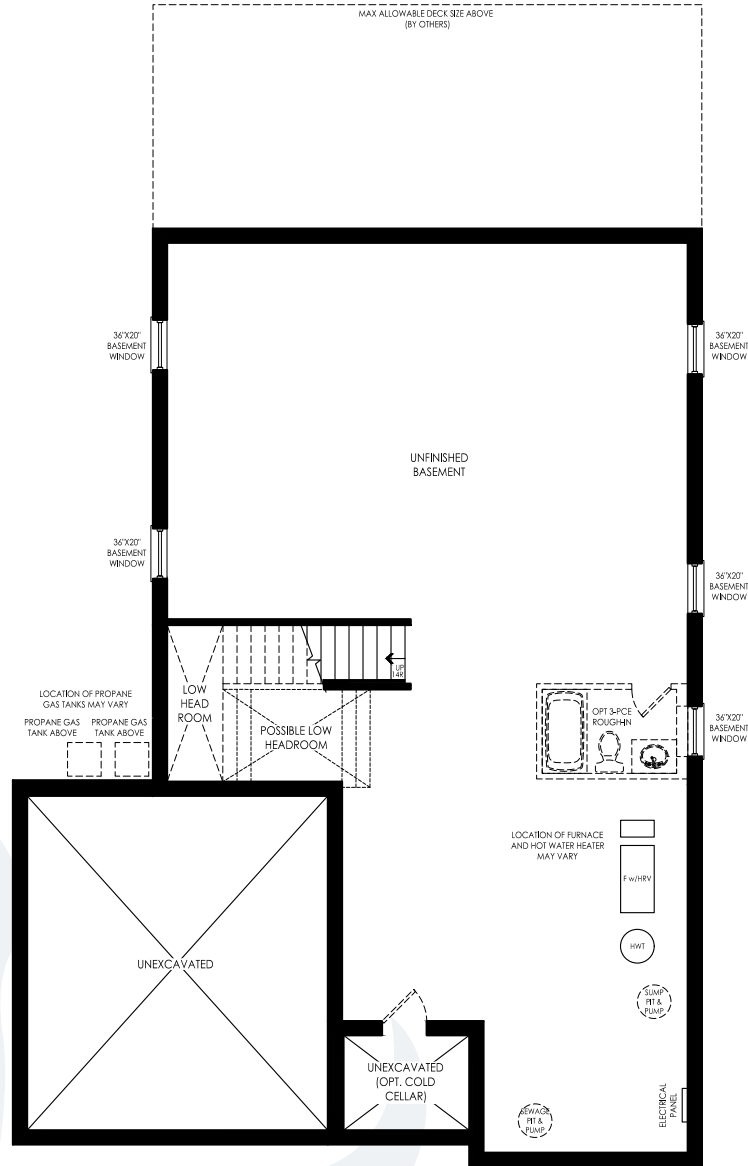


LOFT
ELEVATION B

CAMERON LOFT

ELEVATION A / 2,336 – 3,231 SQ. FT.

ELEVATION B / 2,315 – 3,211 SQ. FT.

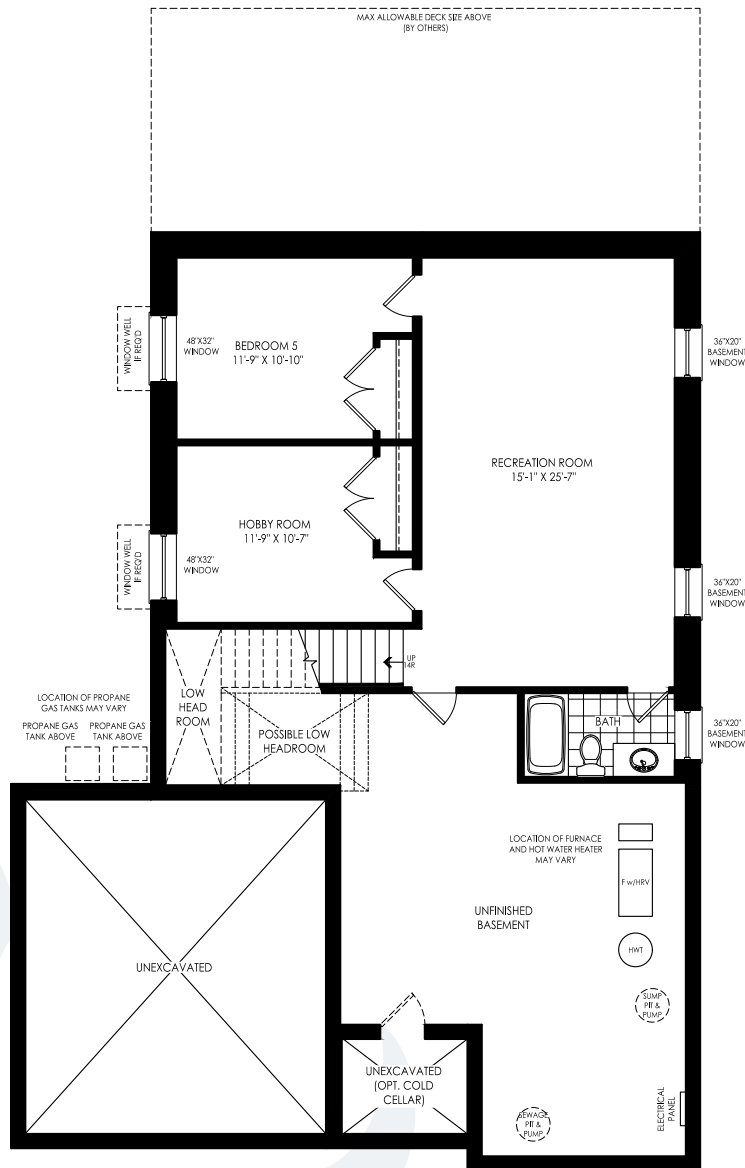


BASEMENT
ELEVATION A & B

CAMERON LOFT

ELEVATION A / 2,336 – 3,231 SQ. FT.

ELEVATION B / 2,315 – 3,211 SQ. FT.



OPT. FINISHED BASEMENT
ELEVATION A & B

CHEMONG

55' SINGLE
1-4 BEDROOM / 1-3 BATH



ELEVATION A
1,742 – 2,718
SQ. FT.

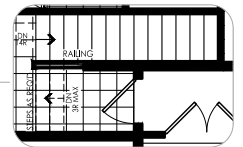
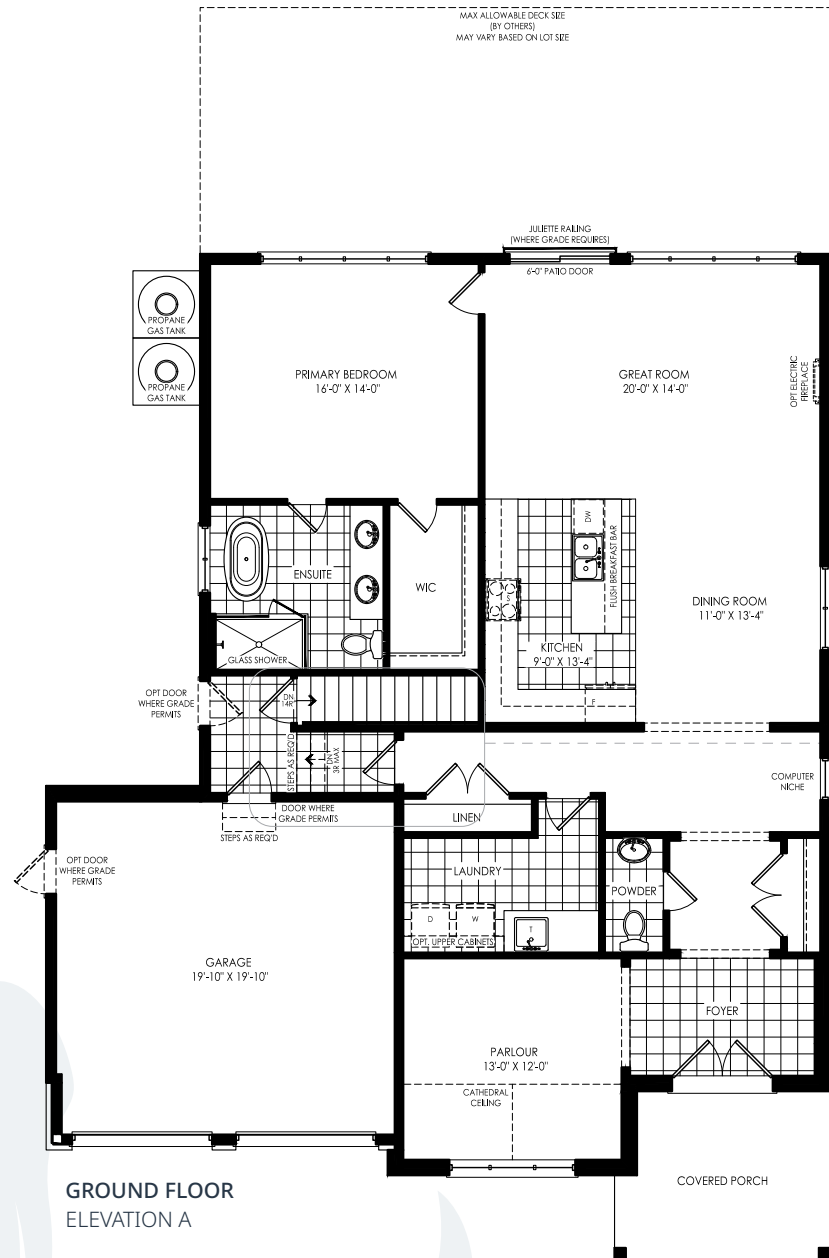


ELEVATION B
1,742 – 2,718
SQ. FT.

CHEMONG

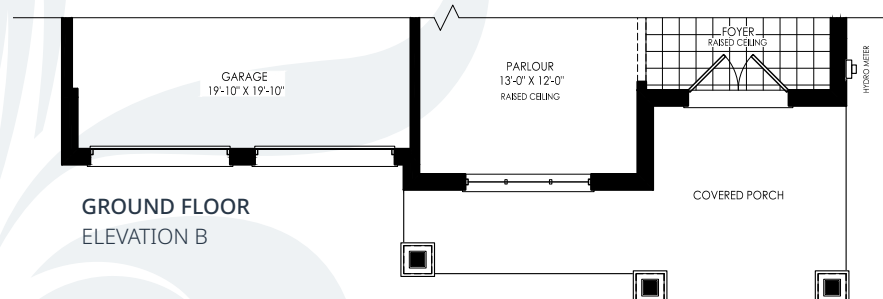
ELEVATION A / 1,742 – 2,718 SQ. FT.

ELEVATION B / 1,742 – 2,718 SQ. FT.



PART. GROUND FLOOR
FOR OPT. FINISHED
BASEMENT
ELEVATION A & B

GROUND FLOOR
ELEVATION A

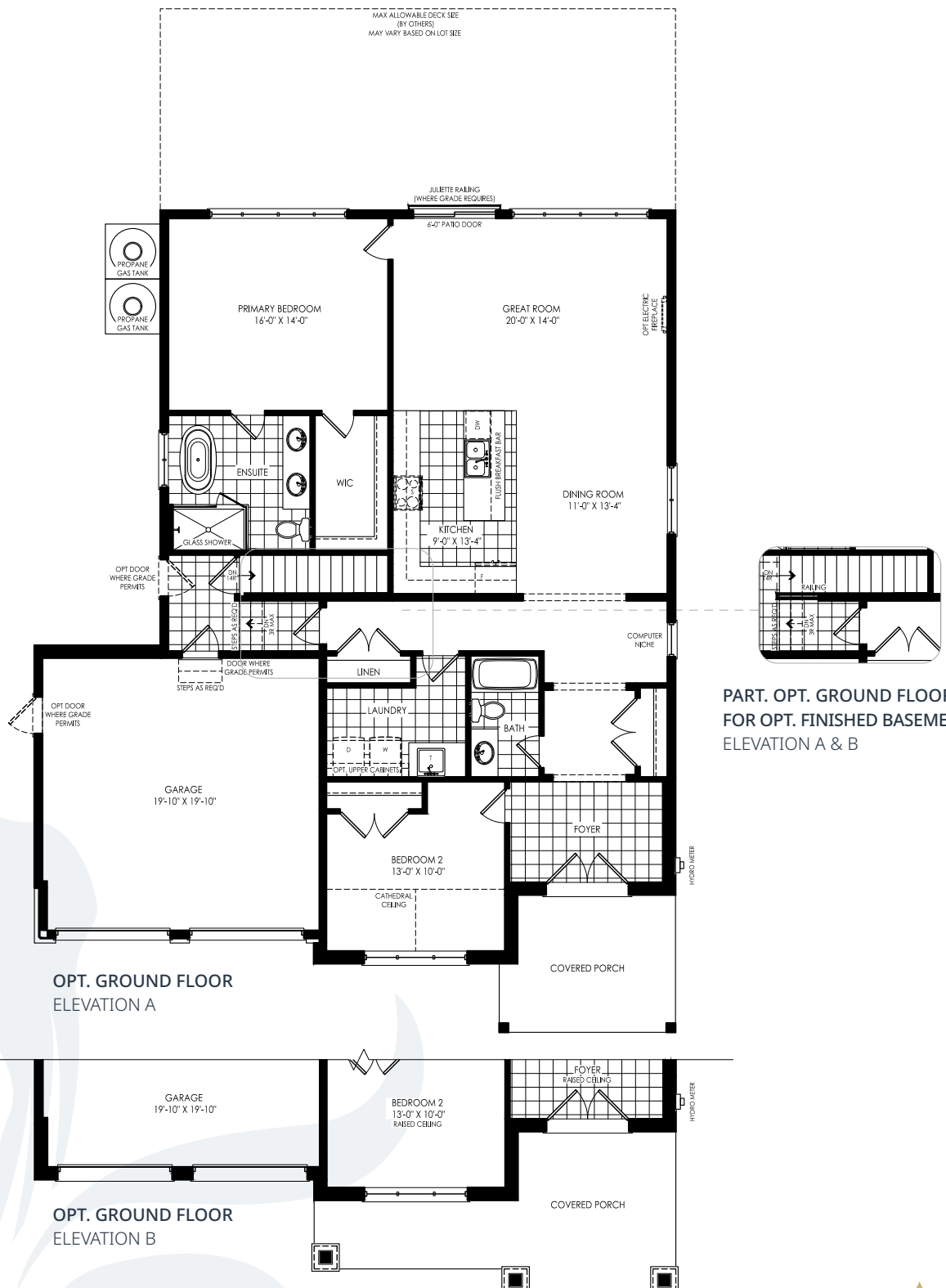


GROUND FLOOR
ELEVATION B

CHEMONG

ELEVATION A / 1,742 – 2,718 SQ. FT.

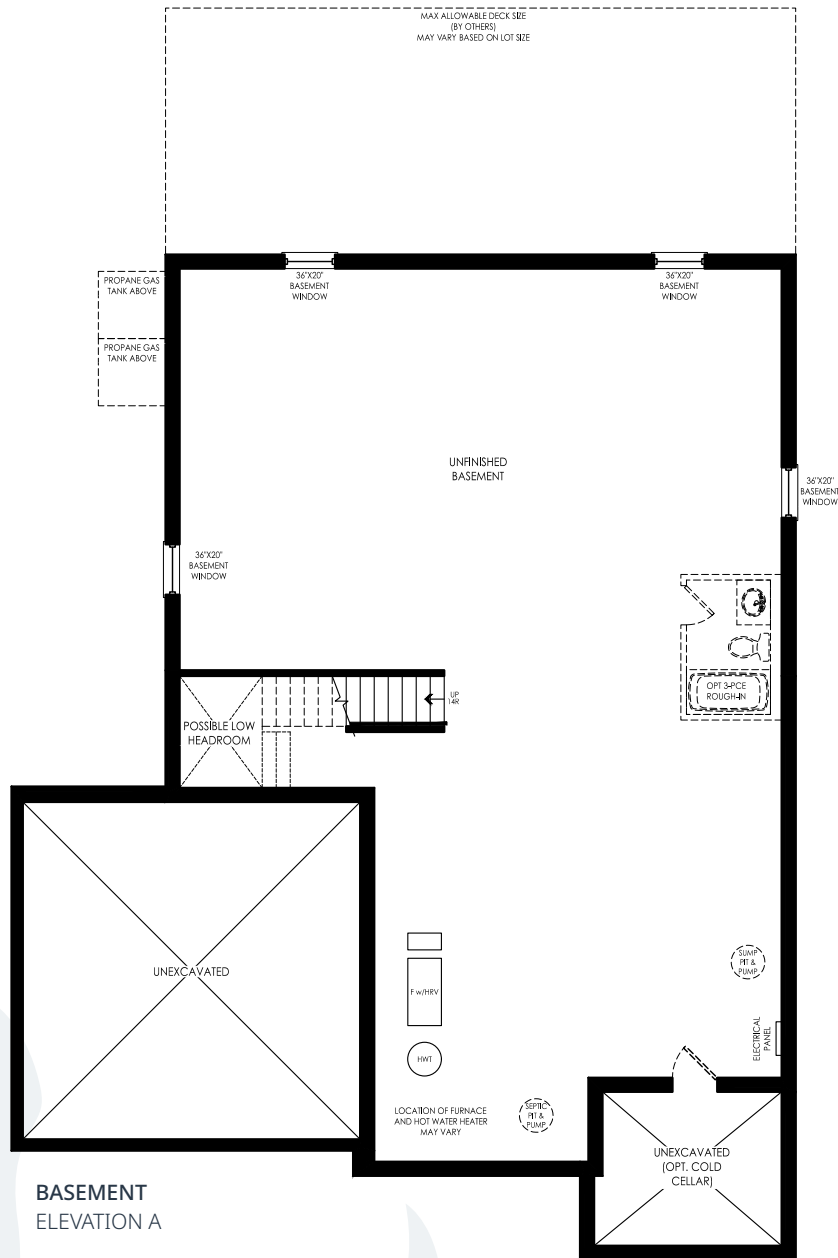
ELEVATION B / 1,742 – 2,718 SQ. FT.



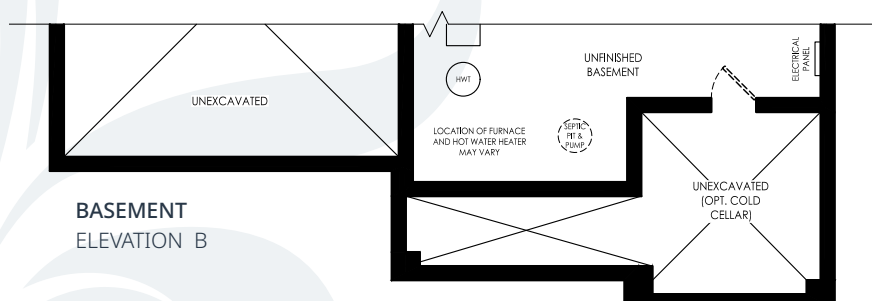
CHEMONG

ELEVATION A / 1,742 – 2,718 SQ. FT.

ELEVATION B / 1,742 – 2,718 SQ. FT.



BASEMENT
ELEVATION A

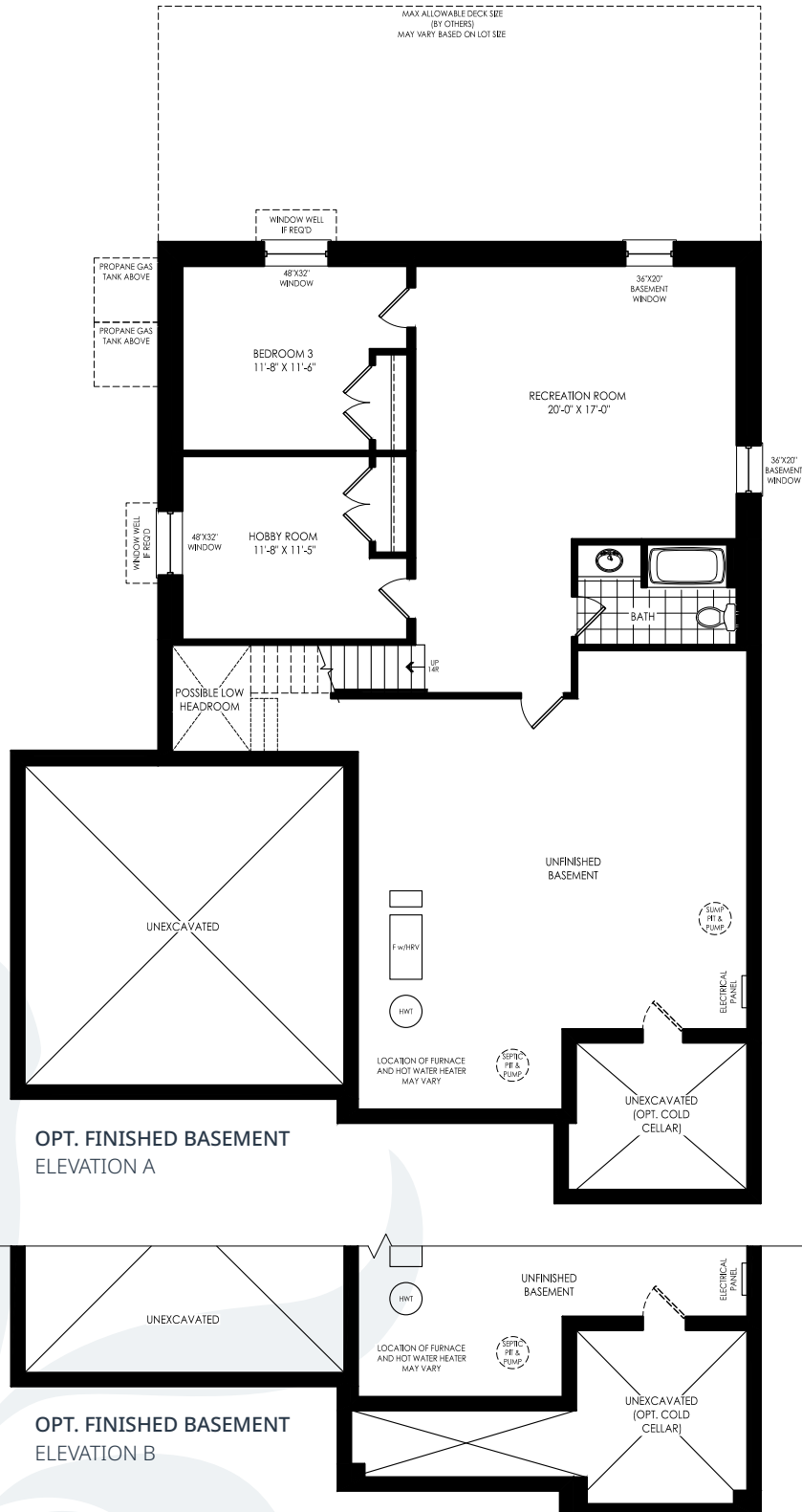


BASEMENT
ELEVATION B

CHEMONG

ELEVATION A / 1,742 – 2,718 SQ. FT.

ELEVATION B / 1,742 – 2,718 SQ. FT.





CLEAR

55' SINGLE CORNER
2-4 BEDROOM / 2-3 BATH



ELEVATION A
1,717 - 2,754
SQ. FT.

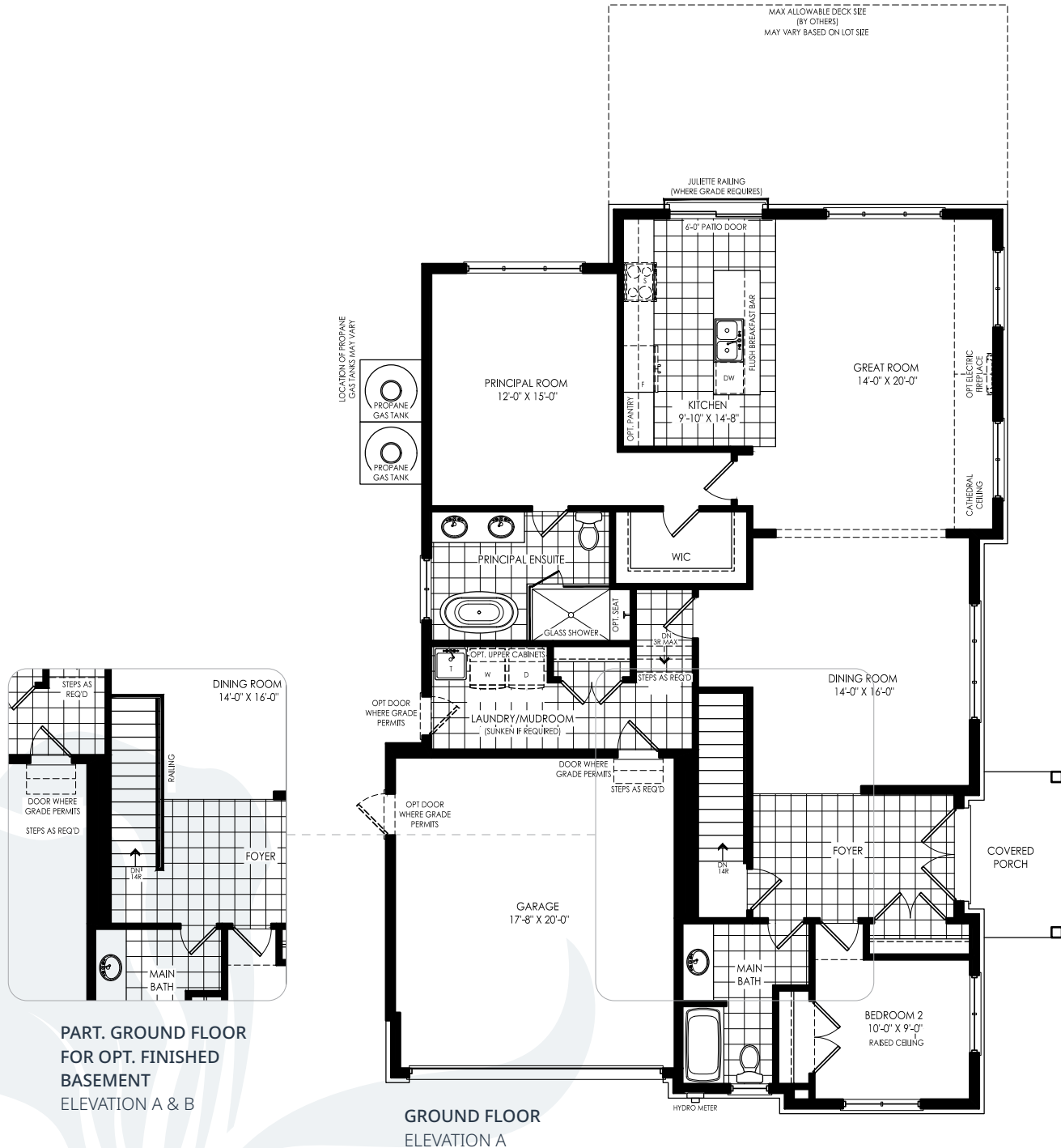


ELEVATION B
1,717 - 2,755
SQ. FT.

CLEAR

ELEVATION A / 1,717 – 2,754 SQ. FT.

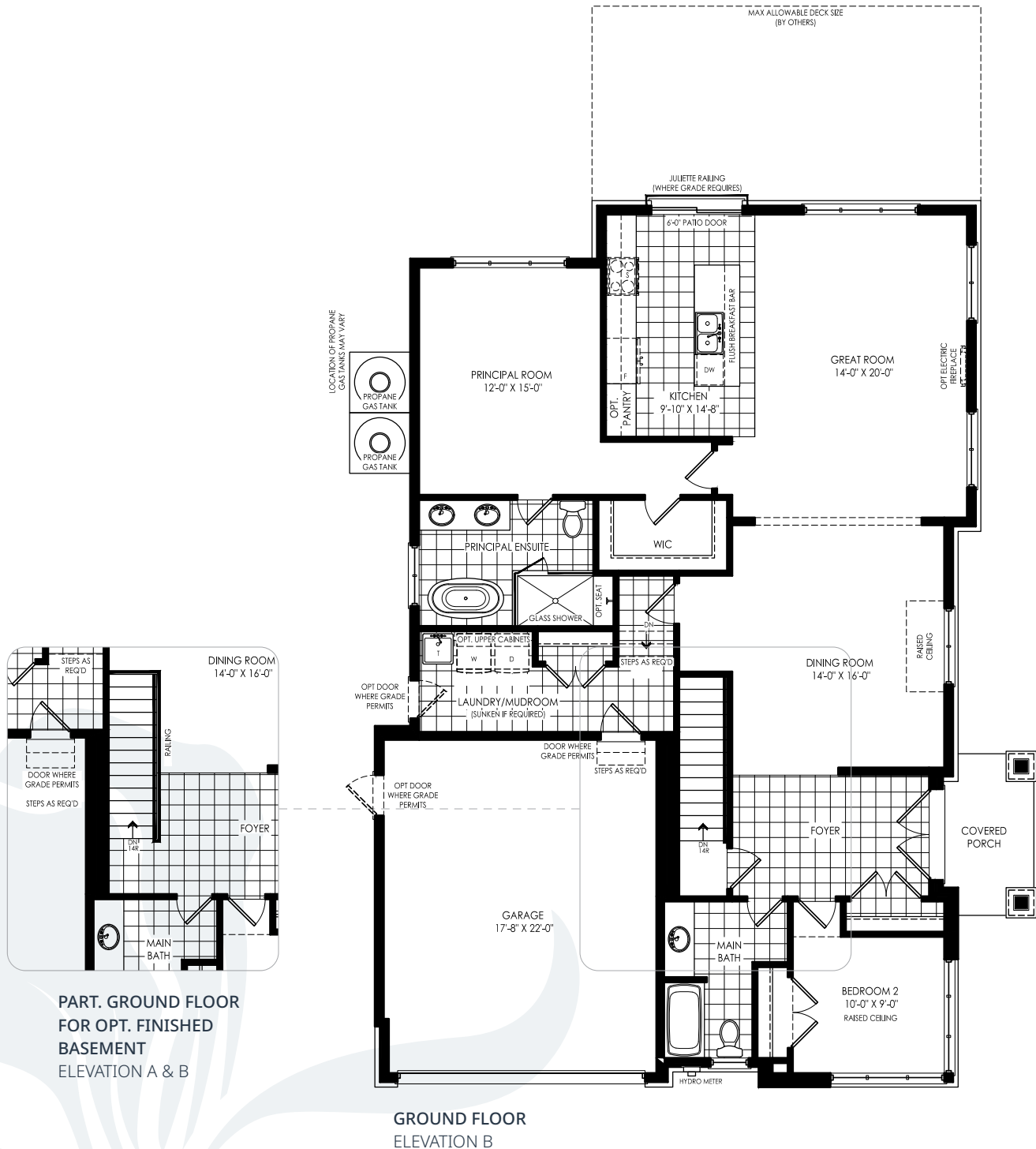
ELEVATION B / 1,717 – 2,755 SQ. FT.



CLEAR

ELEVATION A / 1,717 – 2,754 SQ. FT.

ELEVATION B / 1,717 – 2,755 SQ. FT.





ELEVATION A / 1,717 – 2,754 SQ. FT.
ELEVATION B / 1,717 – 2,755 SQ. FT.





ELEVATION A / 1,717 – 2,754 SQ. FT.
ELEVATION B / 1,717 – 2,755 SQ. FT.



PIGEON LOFT

55' SINGLE
4-5 BEDROOM / 3-4 BATH



ELEVATION A
2,410 – 3,425
SQ. FT.

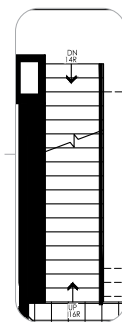
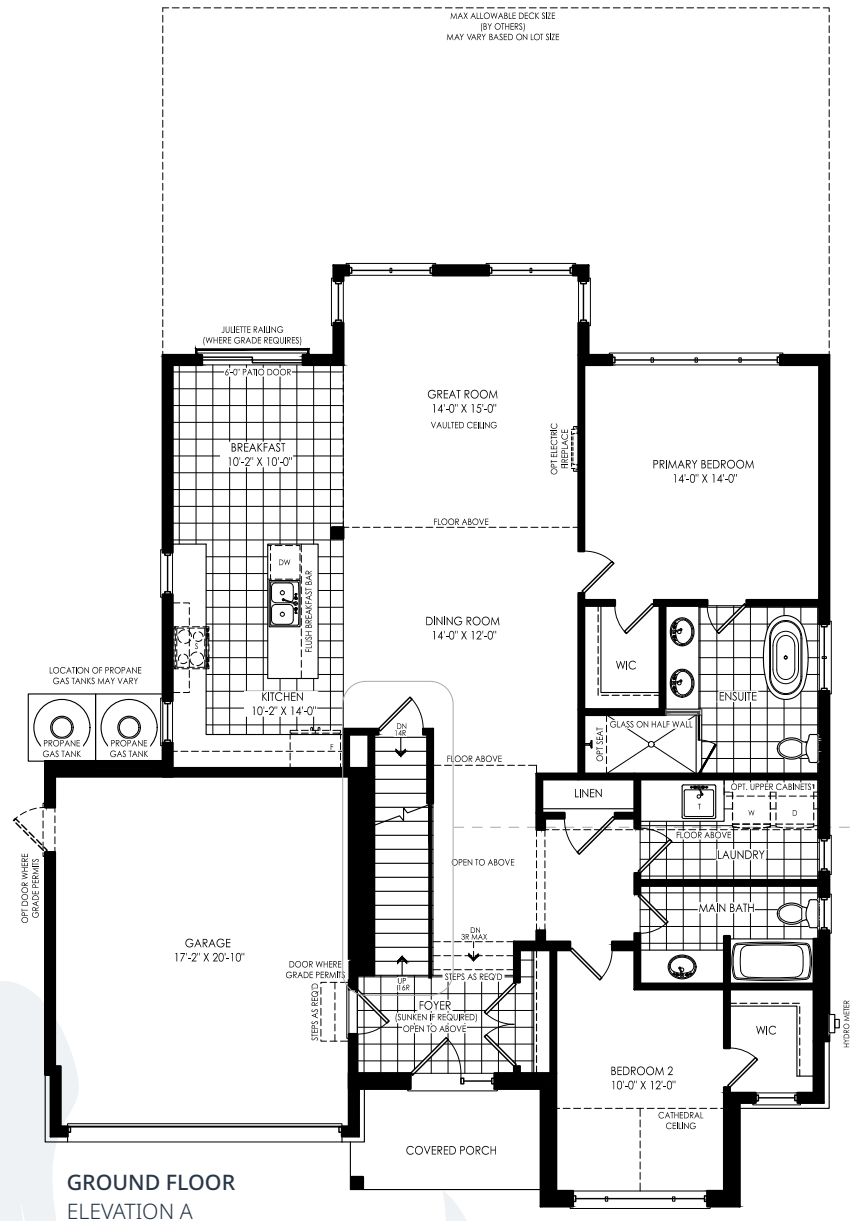


ELEVATION B
2,410 – 3,425
SQ. FT.

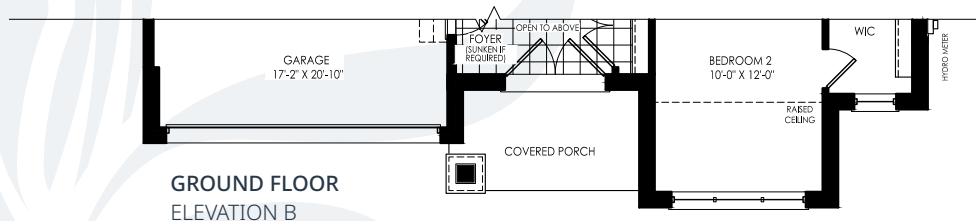
PIGEON LOFT

ELEVATION A / 2,410 – 3,425 SQ. FT.

ELEVATION B / 2,410 – 3,425 SQ. FT.



**PART. GROUND FLOOR
FOR OPT. FINISHED
BASEMENT
ELEVATION A & B**



PIGEON LOFT

ELEVATION A / 2,410 – 3,425 SQ. FT.

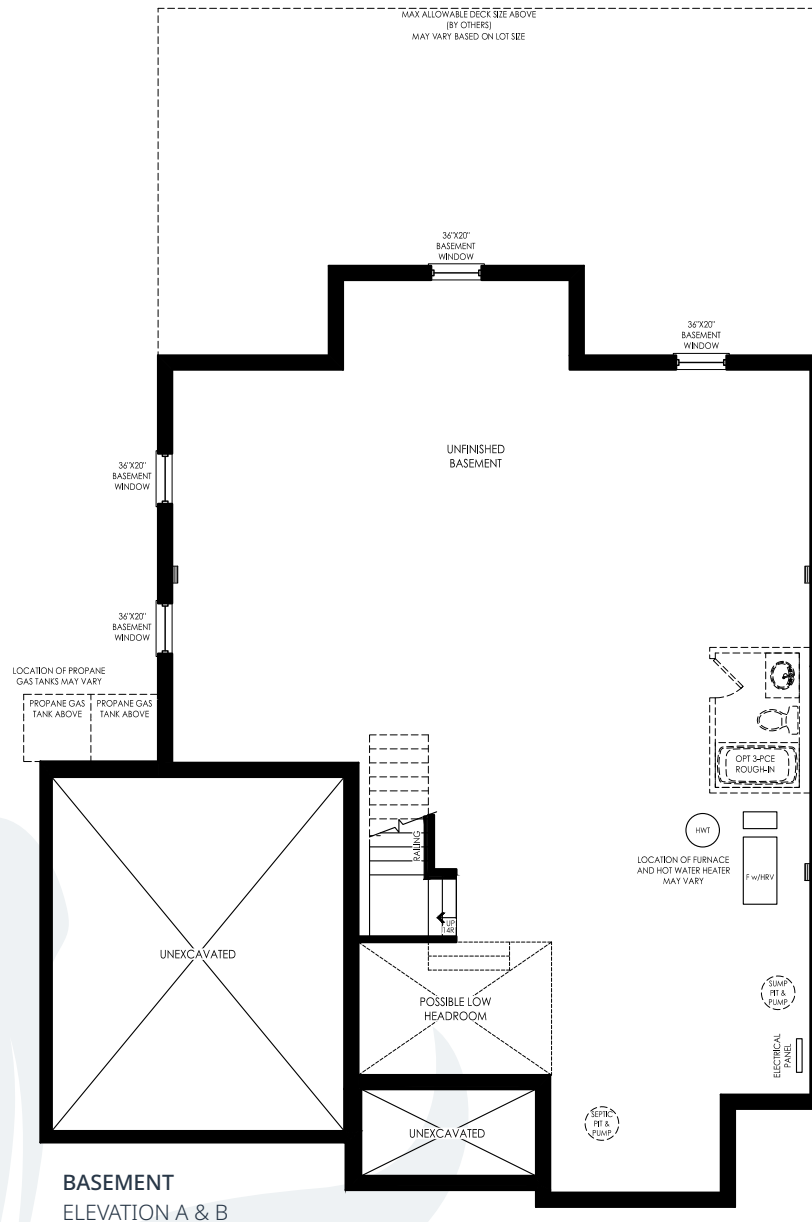
ELEVATION B / 2,410 – 3,425 SQ. FT.



PIGEON LOFT

ELEVATION A / 2,410 – 3,425 SQ. FT.

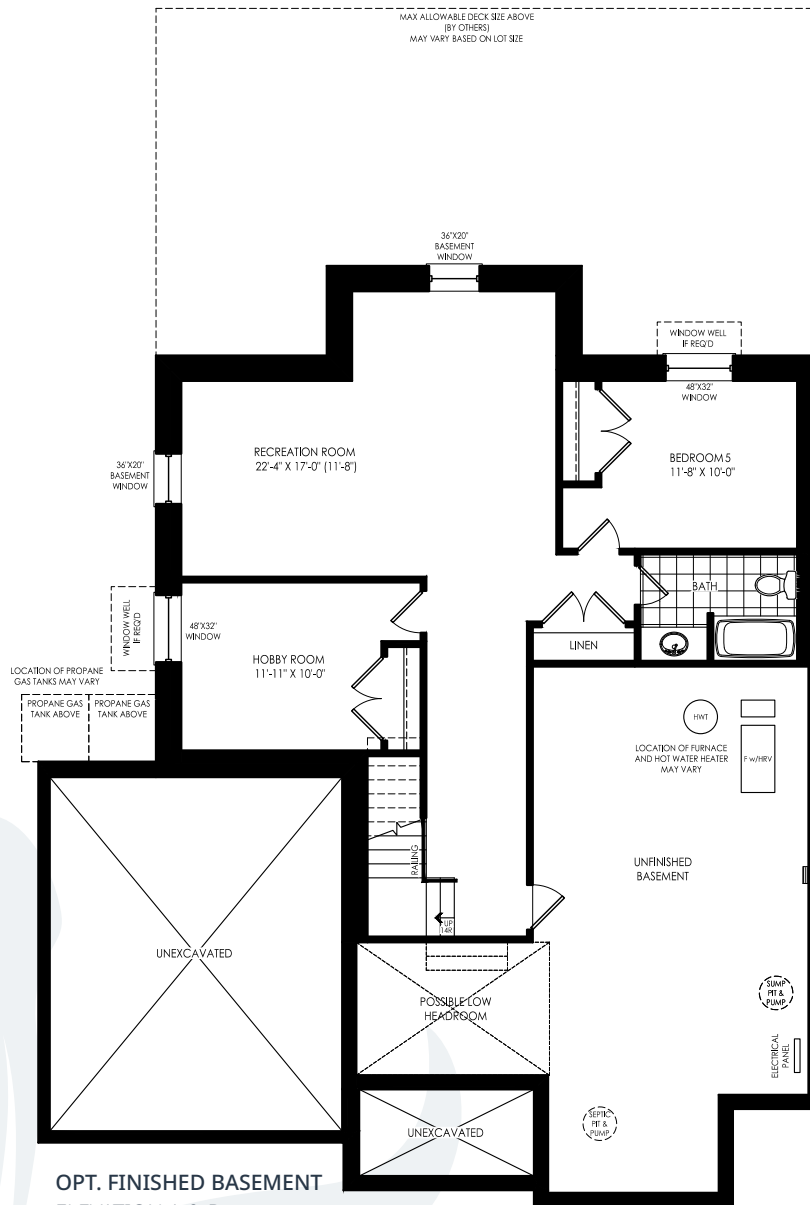
ELEVATION B / 2,410 – 3,425 SQ. FT.



PIGEON LOFT

ELEVATION A / 2,410 – 3,425 SQ. FT.

ELEVATION B / 2,410 – 3,425 SQ. FT.



OPT. FINISHED BASEMENT
ELEVATION A & B



PIGEON

55' SINGLE
2-4 BEDROOM / 2-3 BATH



ELEVATION A
1,696 – 2,711
SQ. FT.

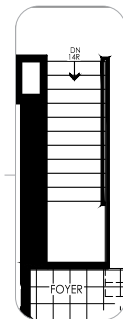
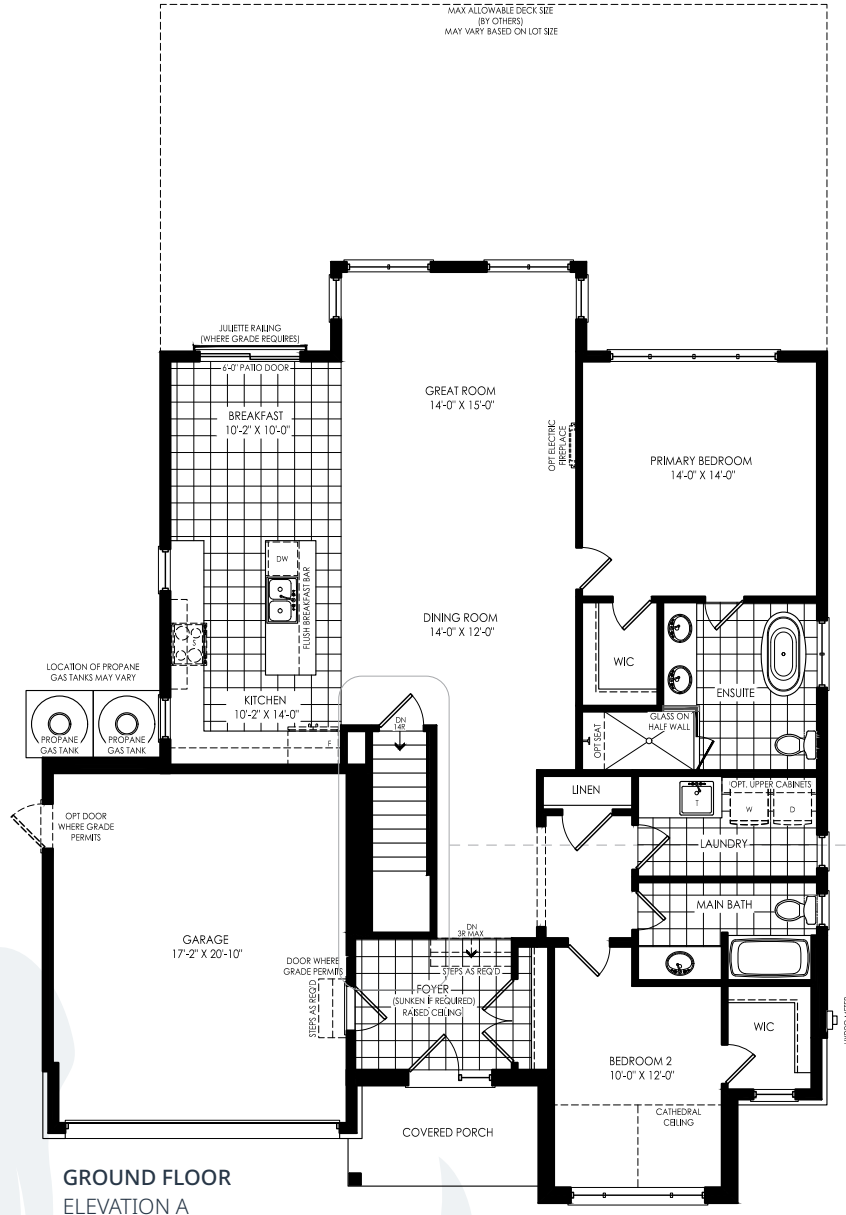


ELEVATION B
1,696 – 2,711
SQ. FT.

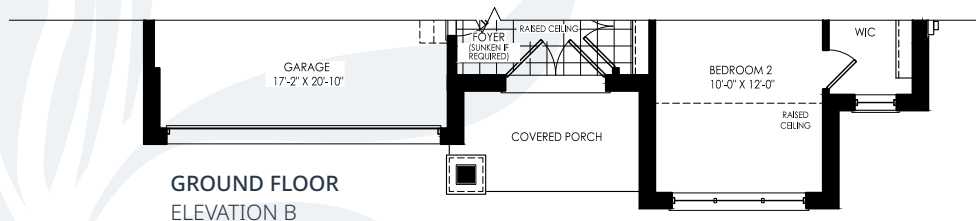
PIGEON

ELEVATION A / 1,696 – 2,711 SQ. FT.

ELEVATION B / 1,696 – 2,711 SQ. FT.



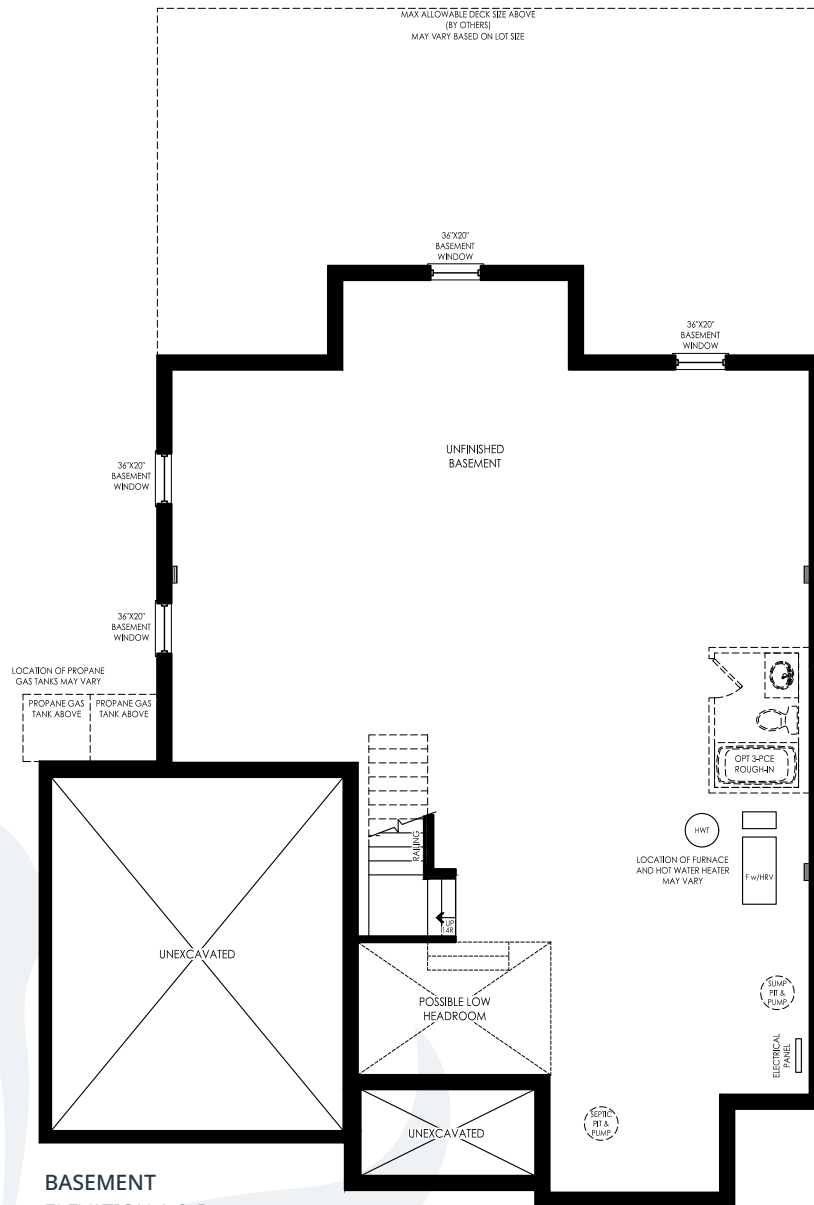
PART. GROUND FLOOR
FOR OPT. FINISHED
BASEMENT
ELEVATION A & B



PIGEON

ELEVATION A / 1,696 – 2,711 SQ. FT.

ELEVATION B / 1,696 – 2,711 SQ. FT.

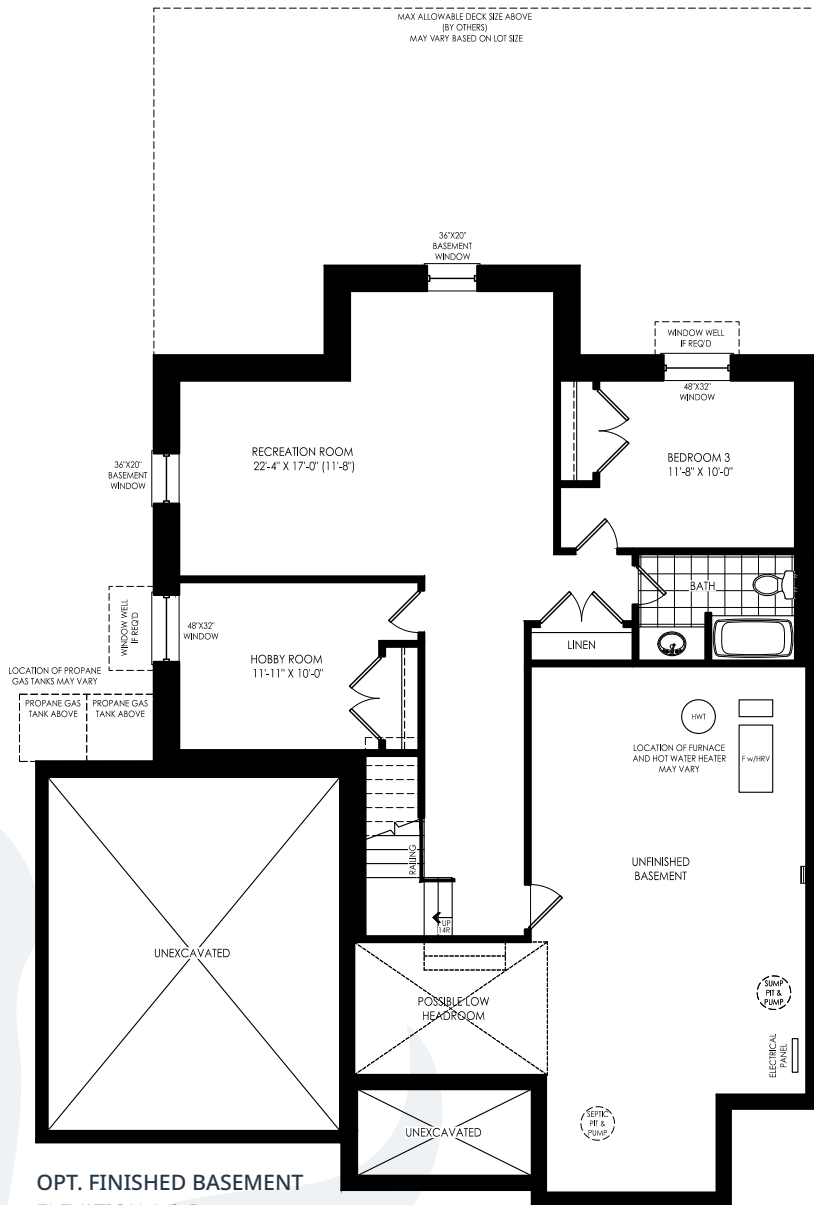


BASEMENT
ELEVATION A & B

PIGEON

ELEVATION A / 1,696 – 2,711 SQ. FT.

ELEVATION B / 1,696 – 2,711 SQ. FT.



OPT. FINISHED BASEMENT
ELEVATION A & B



SCUGOG

49' SINGLE CORNER
2-4 BEDROOM / 2-3 BATH



ELEVATION A
1,751 - 2,844
SQ. FT.

SCUGOG

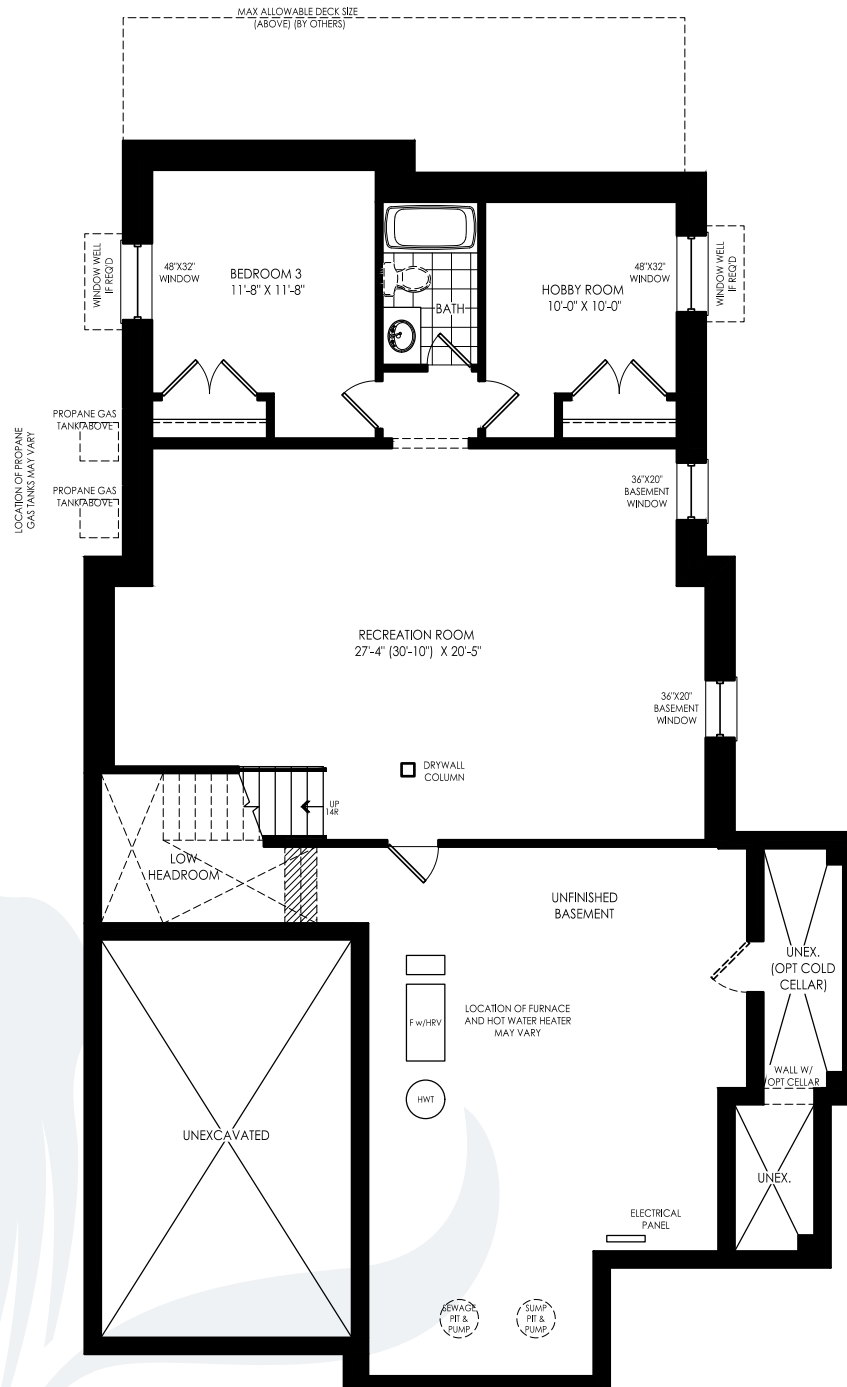
ELEVATION A / 1,751 – 2,844 SQ. FT.

49' SINGLE CORNER



SCUGOG

ELEVATION A / 1,751 – 2,844 SQ. FT.



OPT. FINISHED BASEMENT
ELEVATION A



STONE

49' SINGLE
2-4 BEDROOM / 2-3 BATH



ELEVATION A
1,391 – 2,197
SQ. FT.

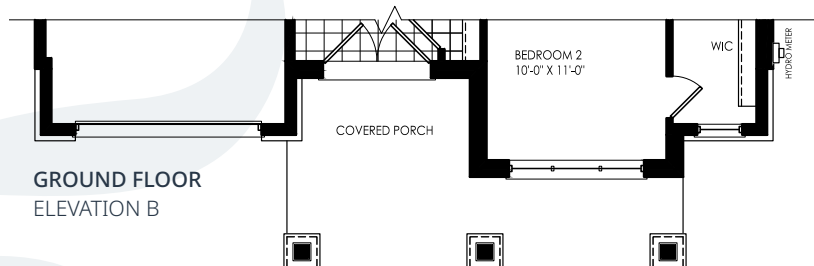
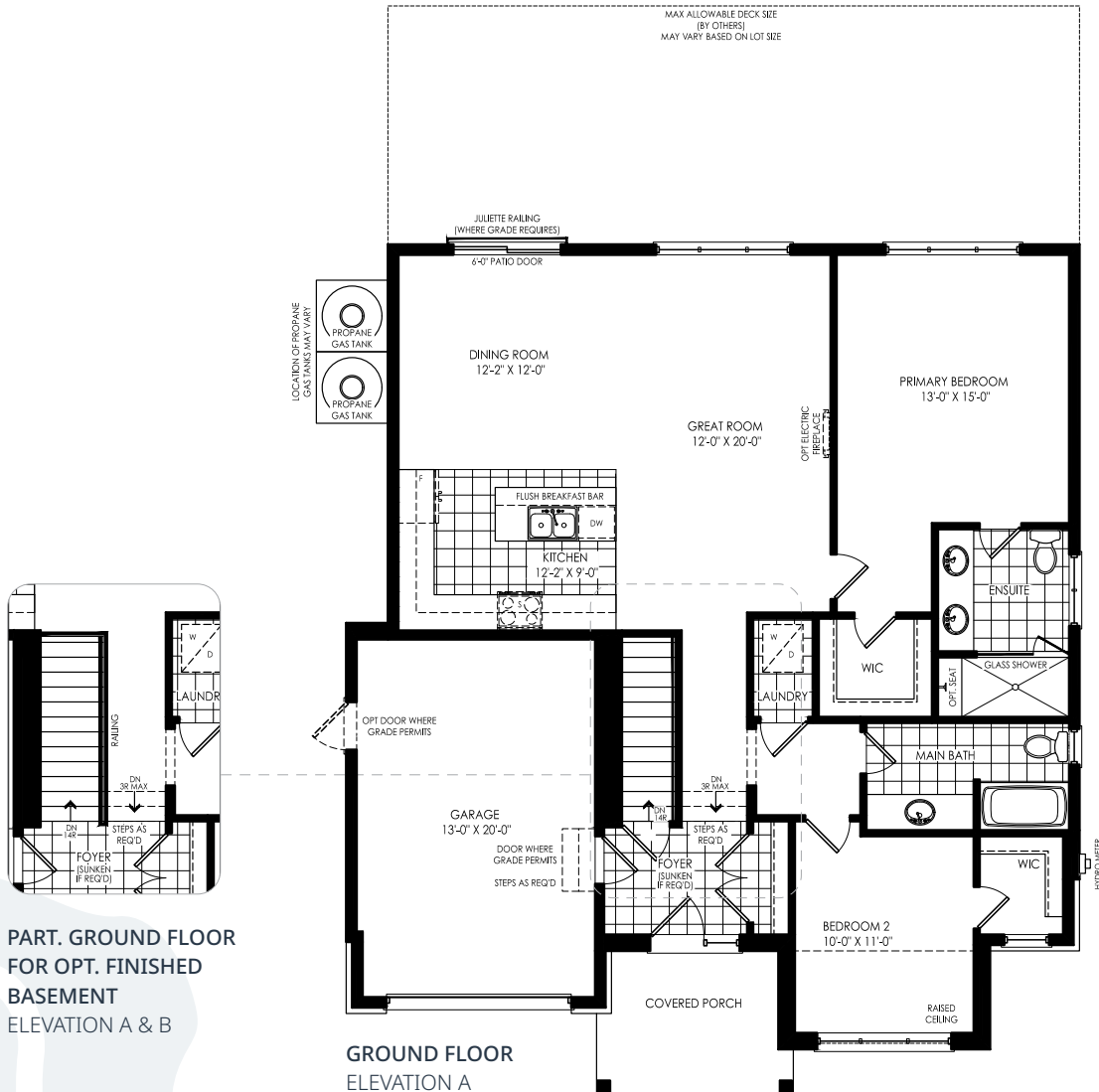


ELEVATION B
1,408 – 2,214
SQ. FT.

STONEY

ELEVATION A / 1,391 – 2,197 SQ. FT.

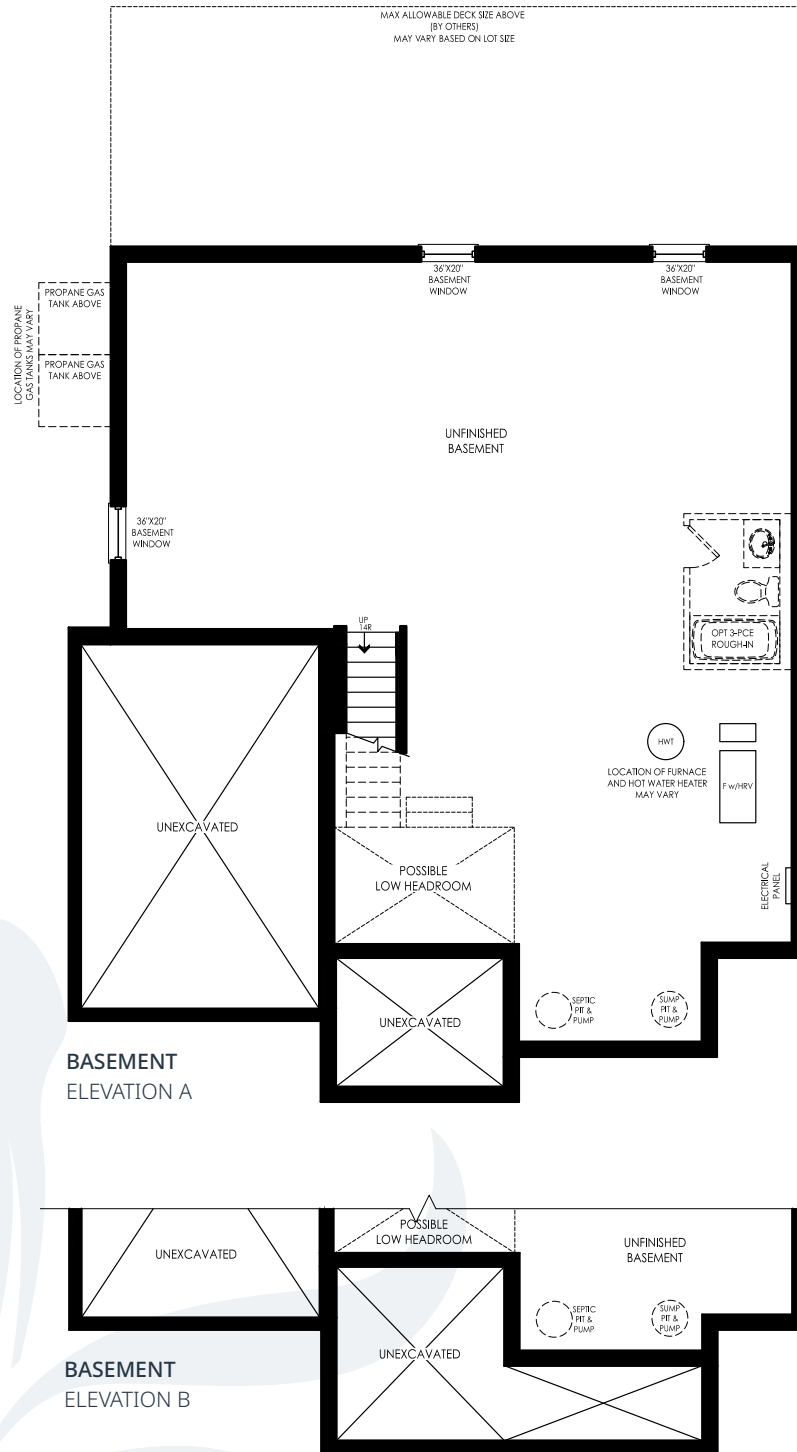
ELEVATION B / 1,408 – 2,214 SQ. FT.



STONEY

ELEVATION A / 1,391 – 2,197 SQ. FT.

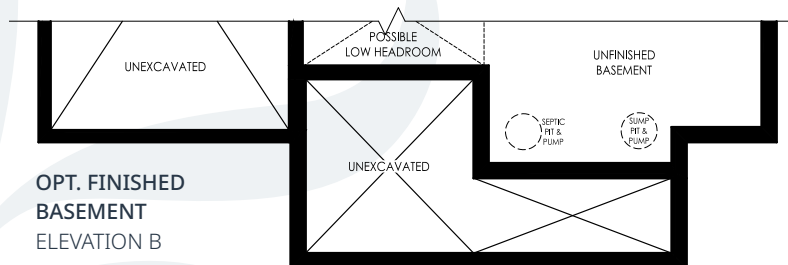
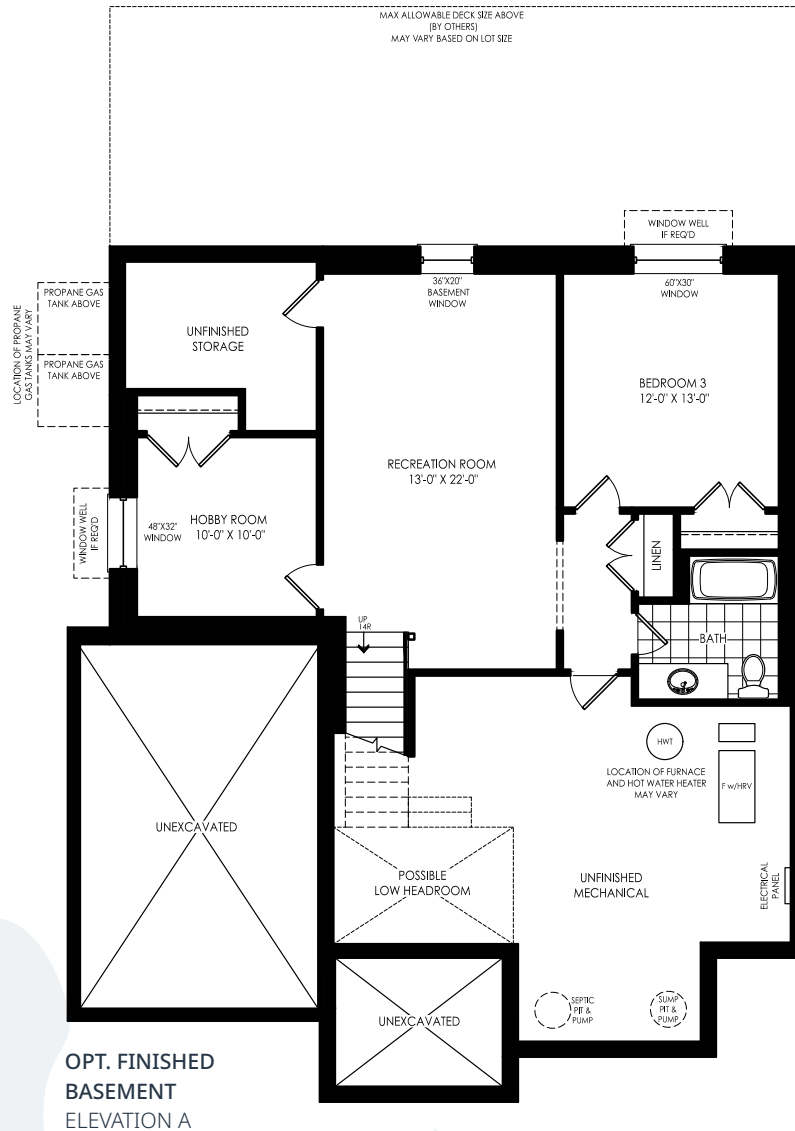
ELEVATION B / 1,408 – 2,214 SQ. FT.



STONEY

ELEVATION A / 1,391 – 2,197 SQ. FT.

ELEVATION B / 1,408 – 2,214 SQ. FT.





STURGEON

49' SINGLE
1-4 BEDROOM / 1-3 BATH



ELEVATION A
1,669 – 2,645
SQ. FT.

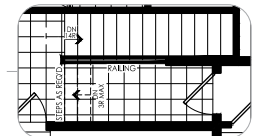
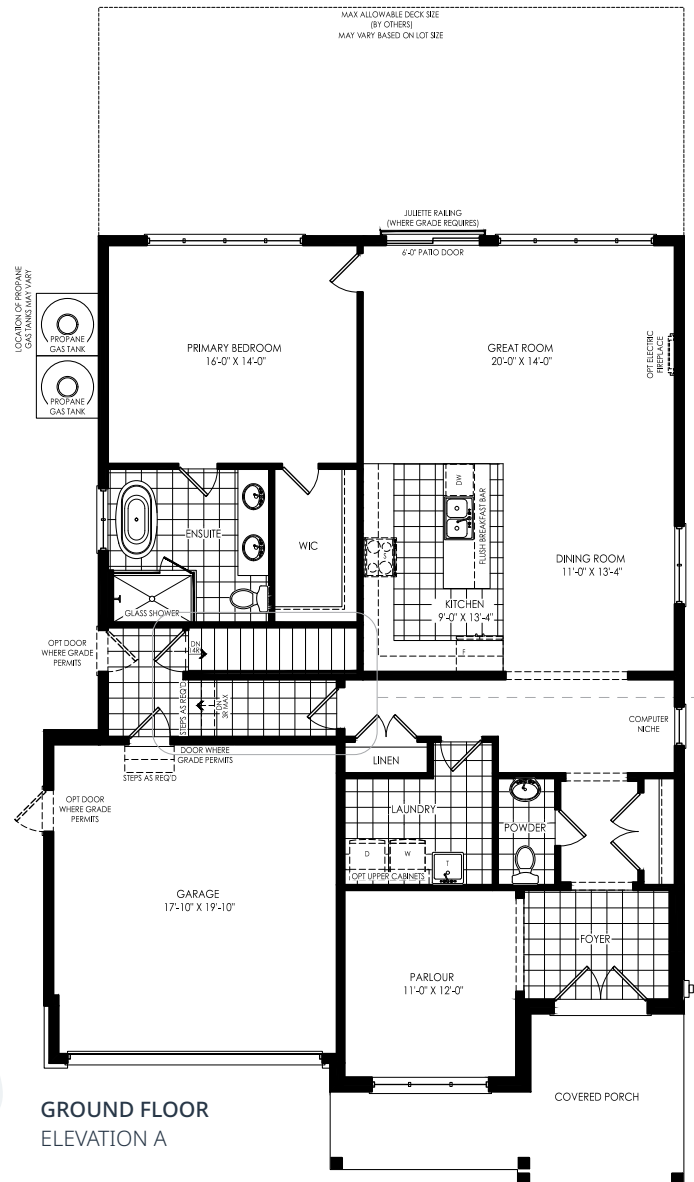


ELEVATION B
1,669 – 2,645
SQ. FT.

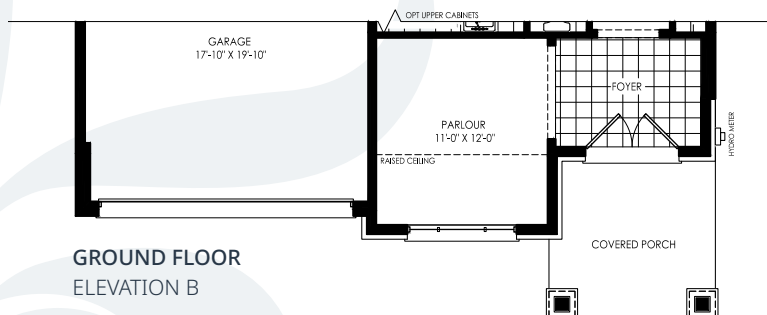
STURGEON

ELEVATION A / 1,669 – 2,645 SQ. FT.

ELEVATION B / 1,669 – 2,645 SQ. FT.



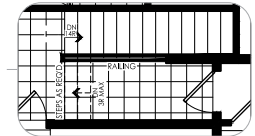
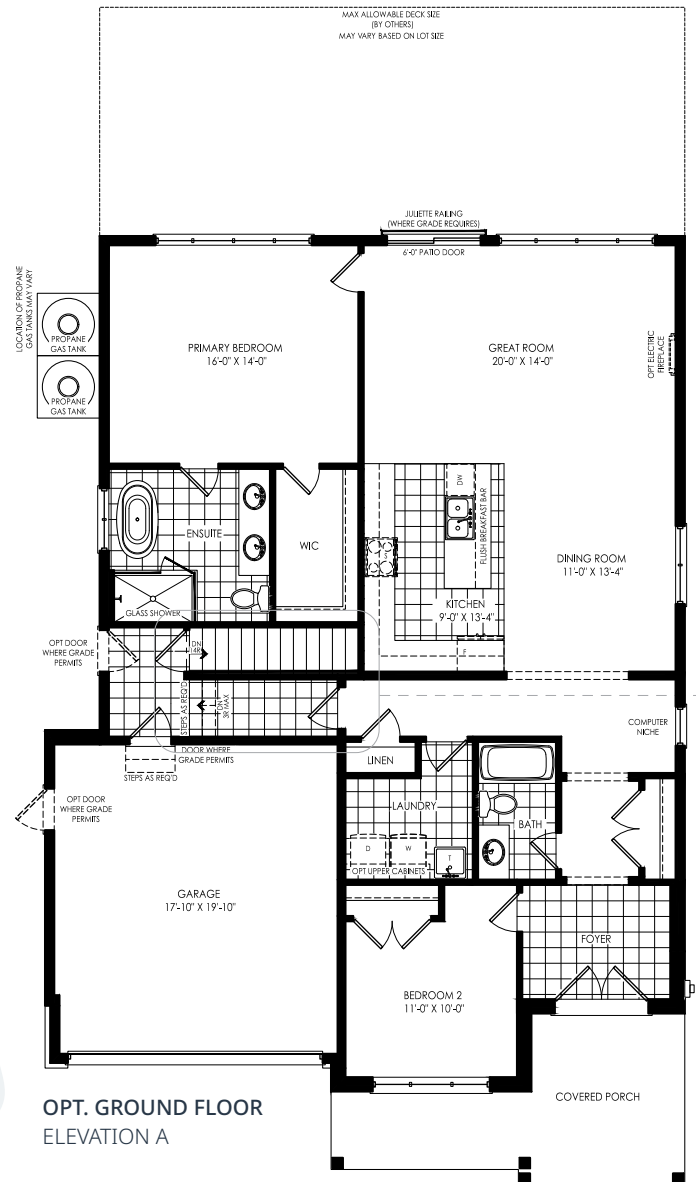
PART. GROUND FLOOR FOR
OPT. FINISHED BASEMENT
ELEVATION A & B



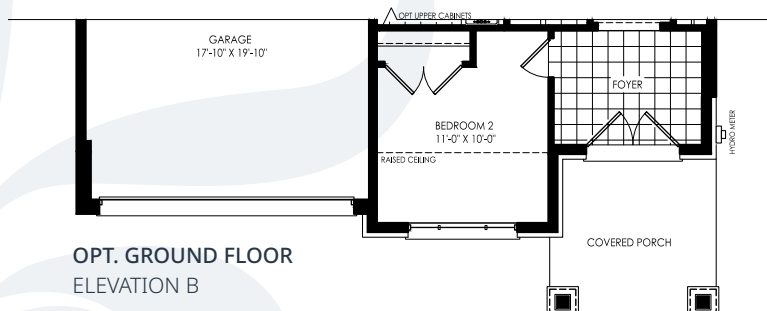
STURGEON

ELEVATION A / 1,669 – 2,645 SQ. FT.

ELEVATION B / 1,669 – 2,645 SQ. FT.



PART. GROUND FLOOR FOR
OPT. FINISHED BASEMENT
ELEVATION A & B





49' SINGLE



STURGEON

ELEVATION A / 1,669 – 2,645 SQ. FT.

ELEVATION B / 1,669 – 2,645 SQ. FT.

