

**the
wolfe**

**4 BEDROOM
+ 2.5 BATH**

Elevation B - 1,965 sq. ft.

Elevation C - 1,955 sq. ft.

BA33-7



Elevation B - 1,965 sq. ft.



Elevation C - 1,955 sq. ft.



32' singles

 **GREAT GULF**



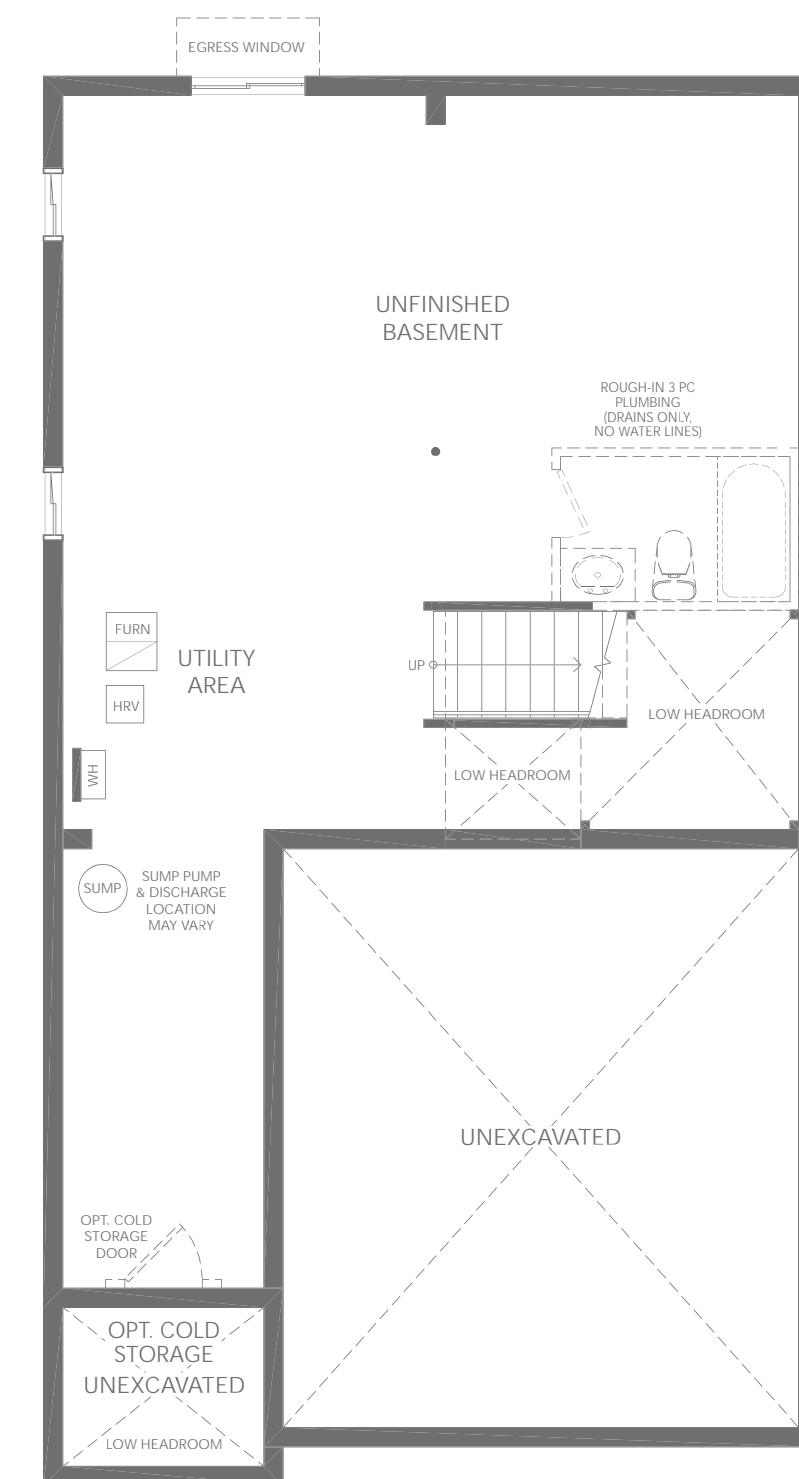
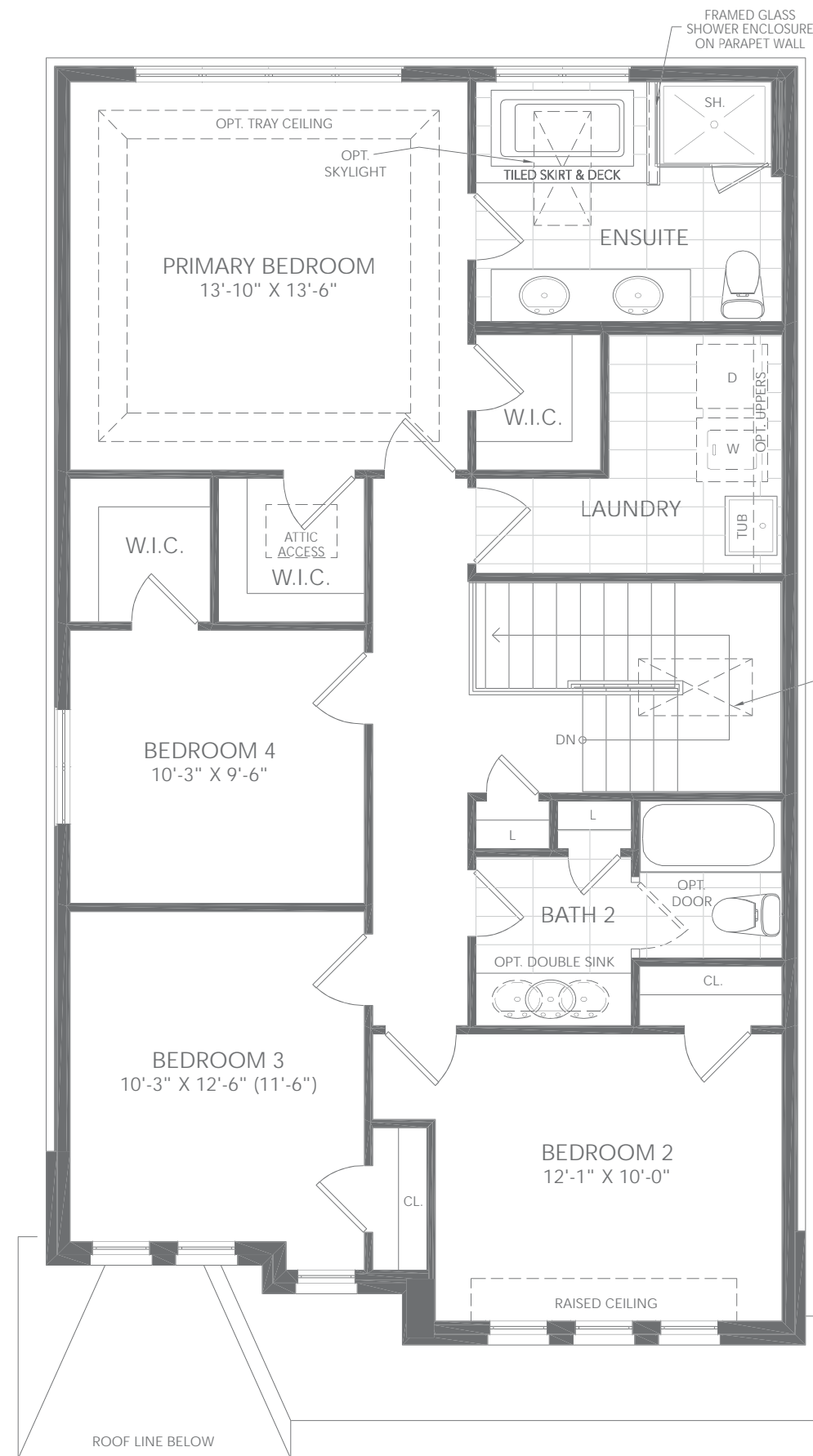
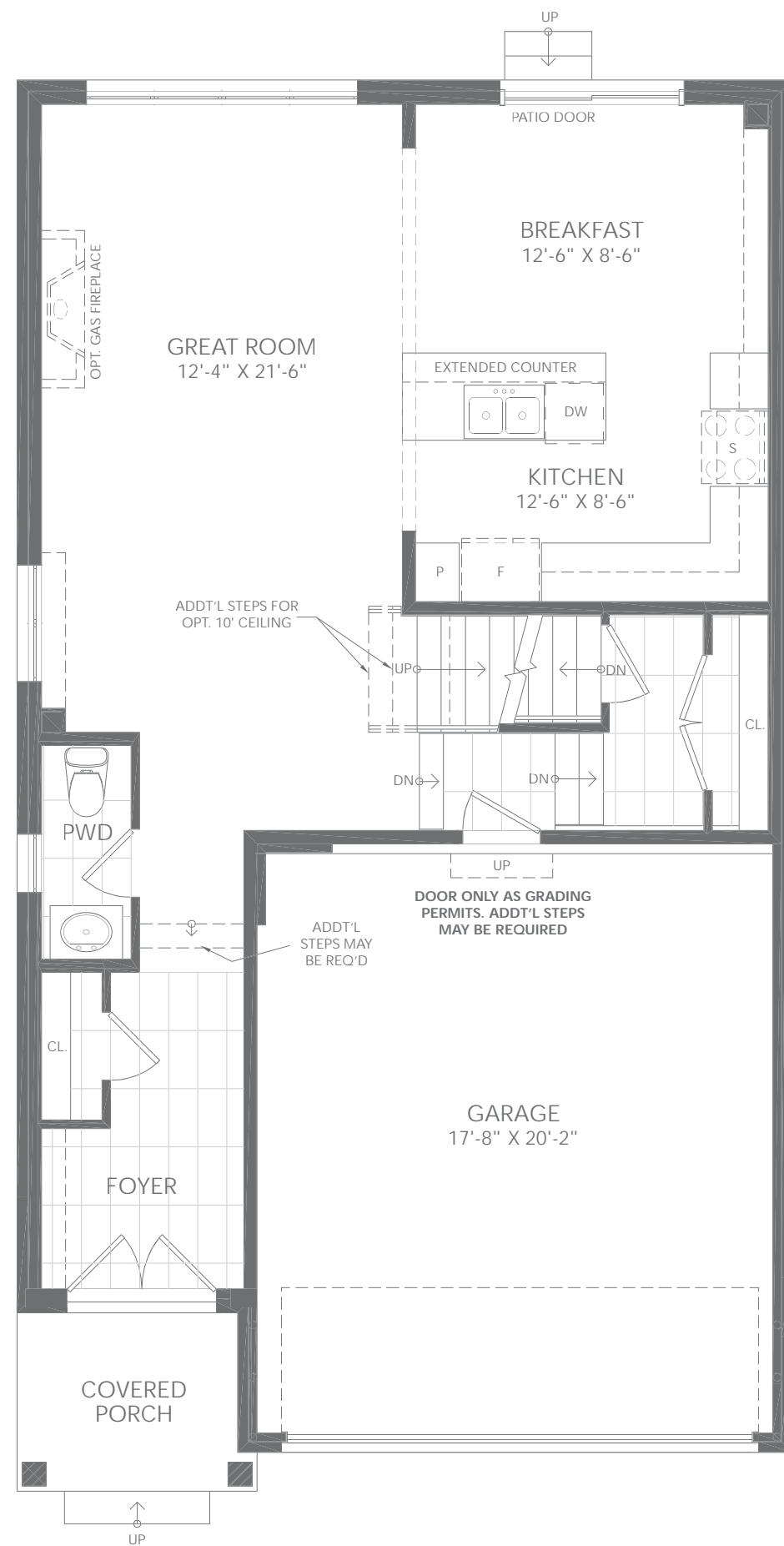
the wolfe

4 BEDROOM + 2.5 BATH

Elevation B - 1,965 sq. ft.

Elevation C - 1,955 sq. ft.

BA33-7



32' singles

the sawyer

**4 BEDROOM
+ 2.5 BATH**

Elevation B - 2,250 sq. ft.

Elevation C - 2,245 sq. ft.

BA33-8



Elevation B - 2,250 sq. ft.



Elevation C - 2,245 sq. ft.



32' singles



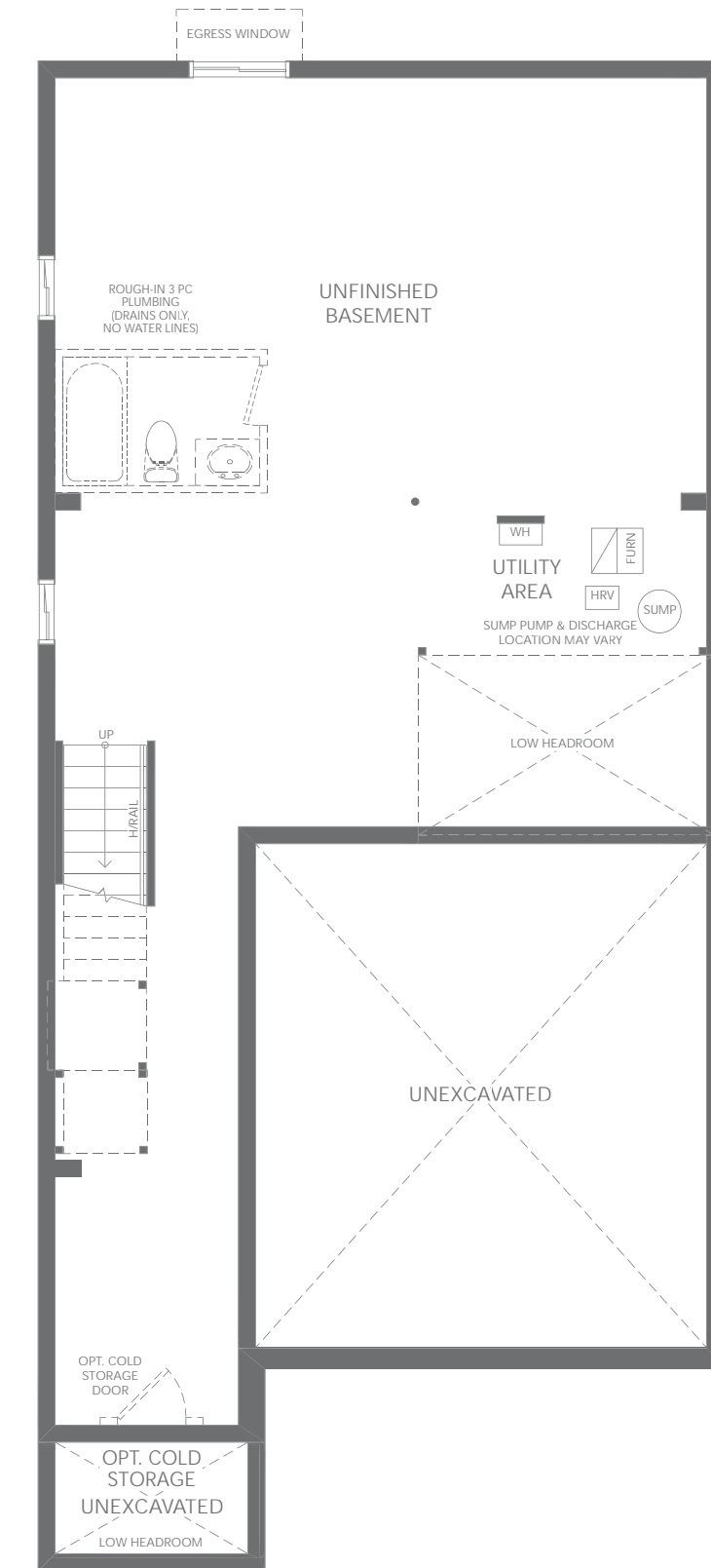
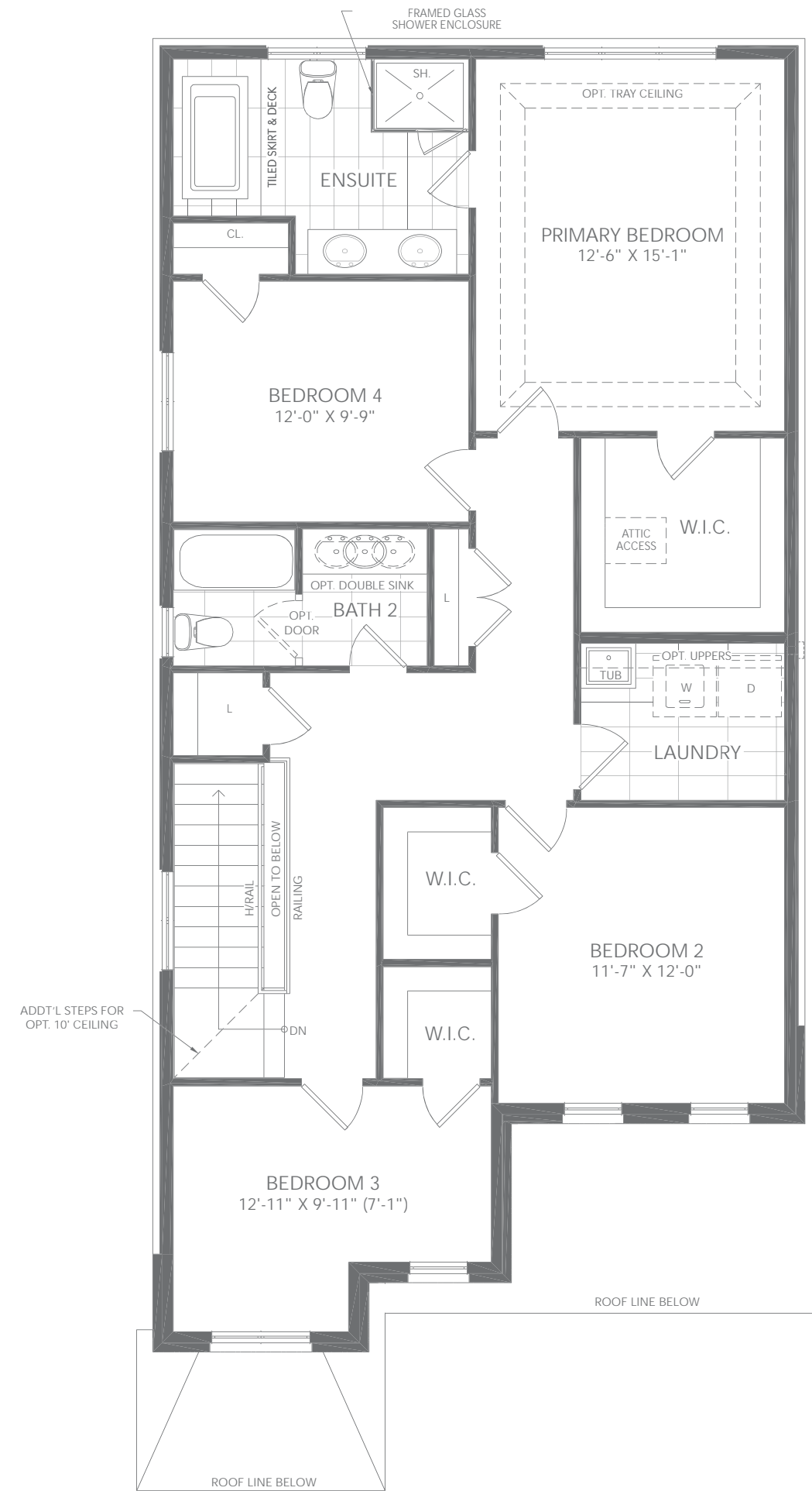
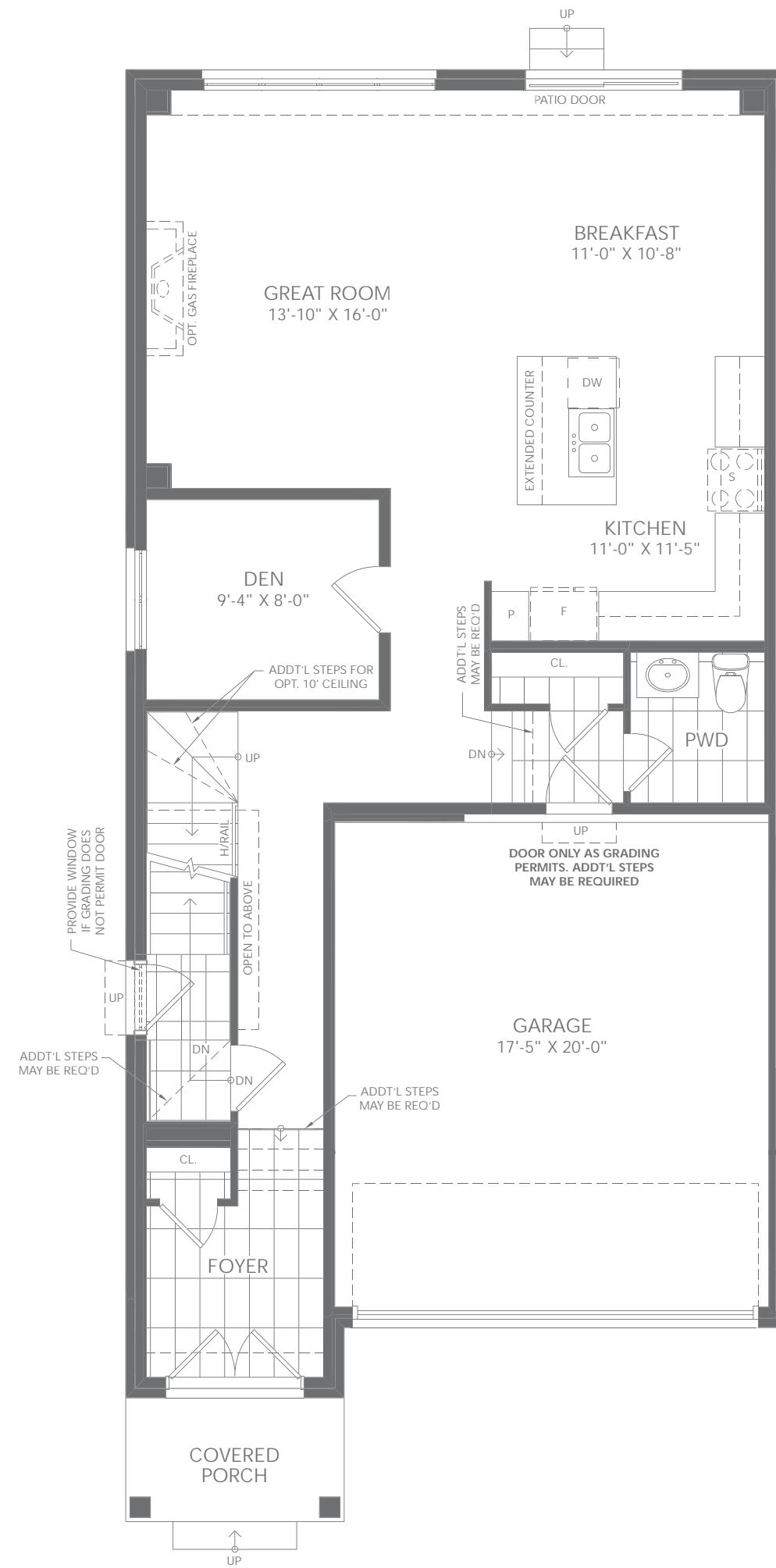
the sawyer

4 BEDROOM + 2.5 BATH

Elevation B - 2,250 sq. ft.

Elevation C - 2,245 sq. ft.

BA33-8



32' singles

the sawyer

**5 BEDROOM
+ 3.5 BATH**

Elevation B - 2,900 sq. ft.

Elevation C - 2,900 sq. ft.

All elevations include 650 sq. ft. of finished basement area

BA33-8



Elevation B - 2,900 sq. ft.



Elevation C - 2,245 sq. ft.

 **GREAT GULF**



the sawyer

5 BEDROOM + 3.5 BATH

Elevation B - 2,900 sq. ft.

Elevation C - 2,900 sq. ft.

All elevations include 650 sq. ft. of finished basement area

BA33-8

fullhouse
EDITION

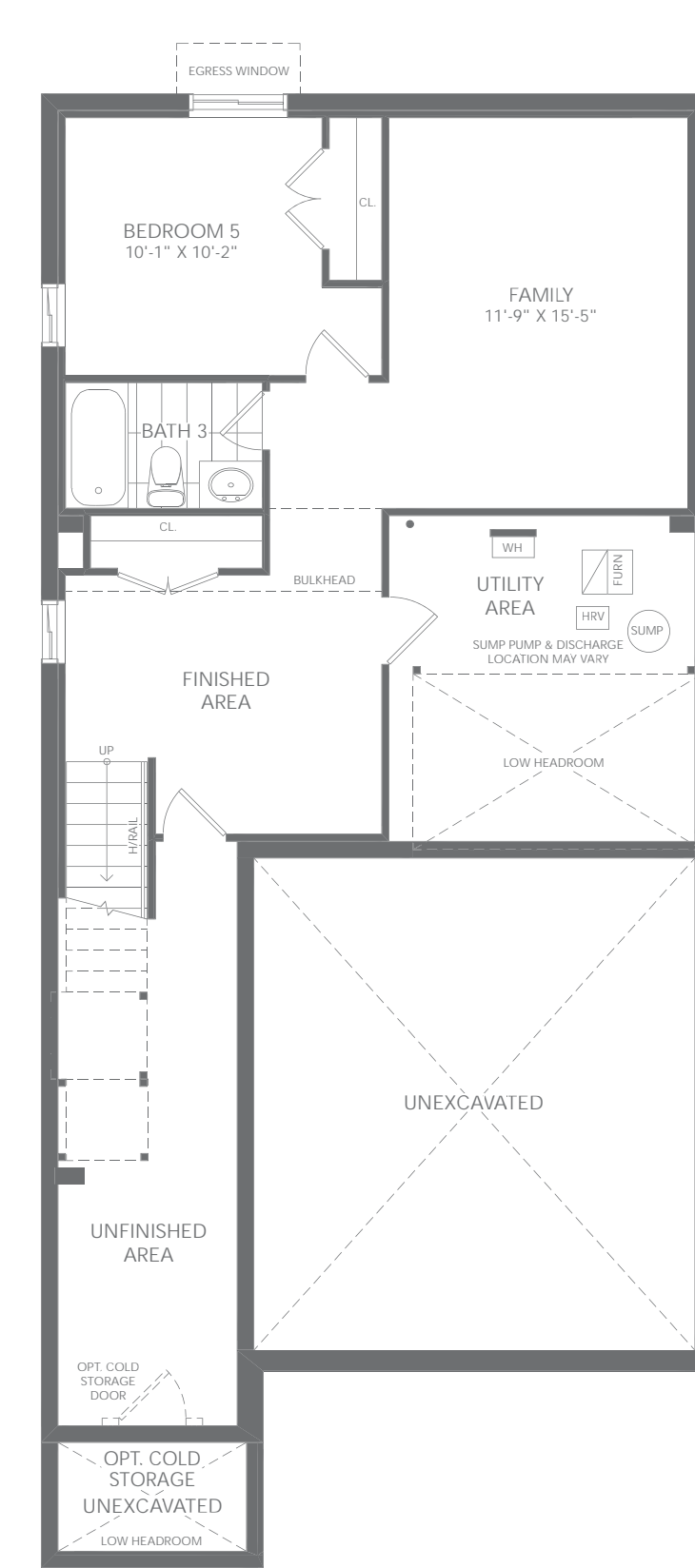
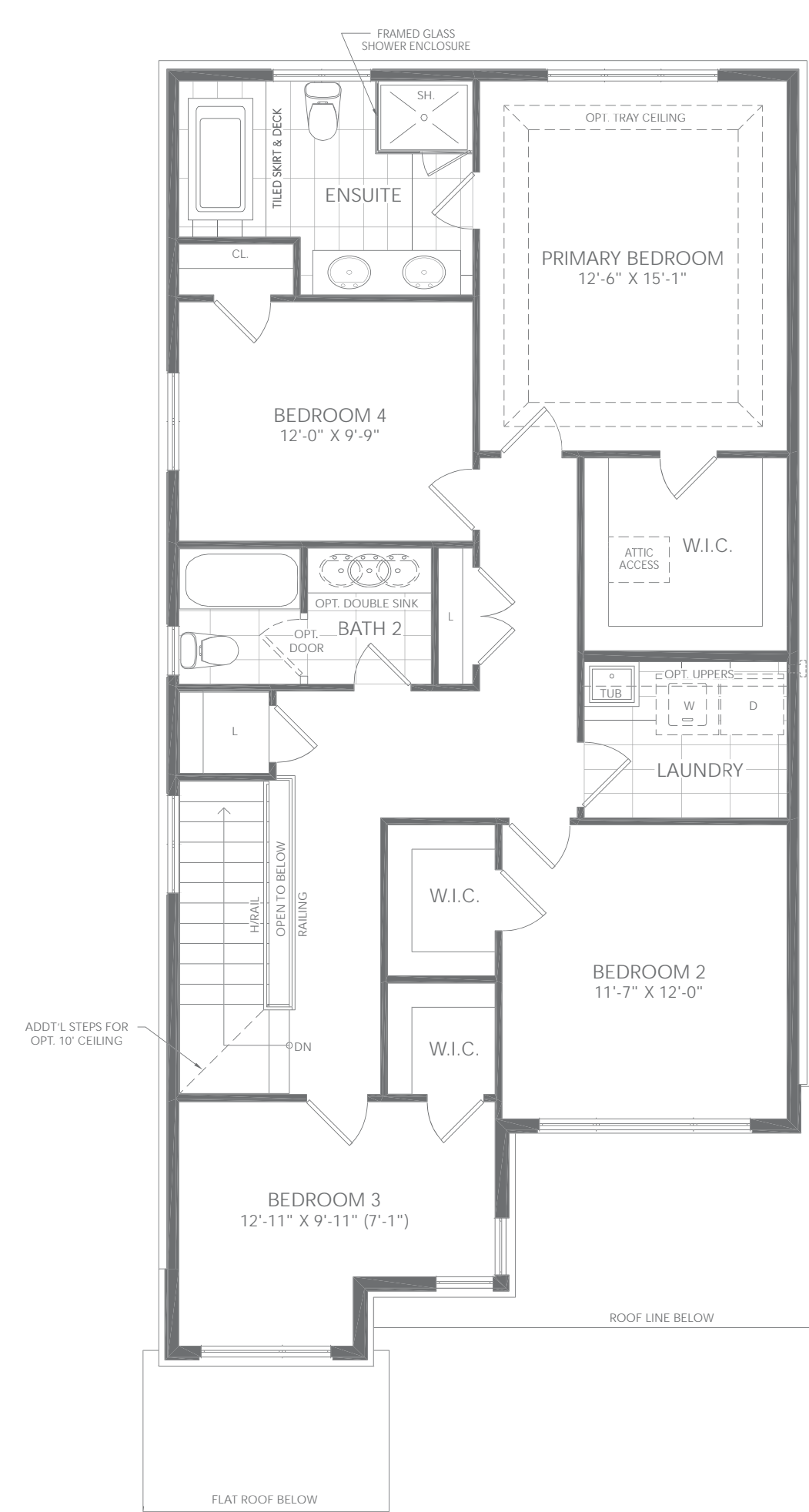
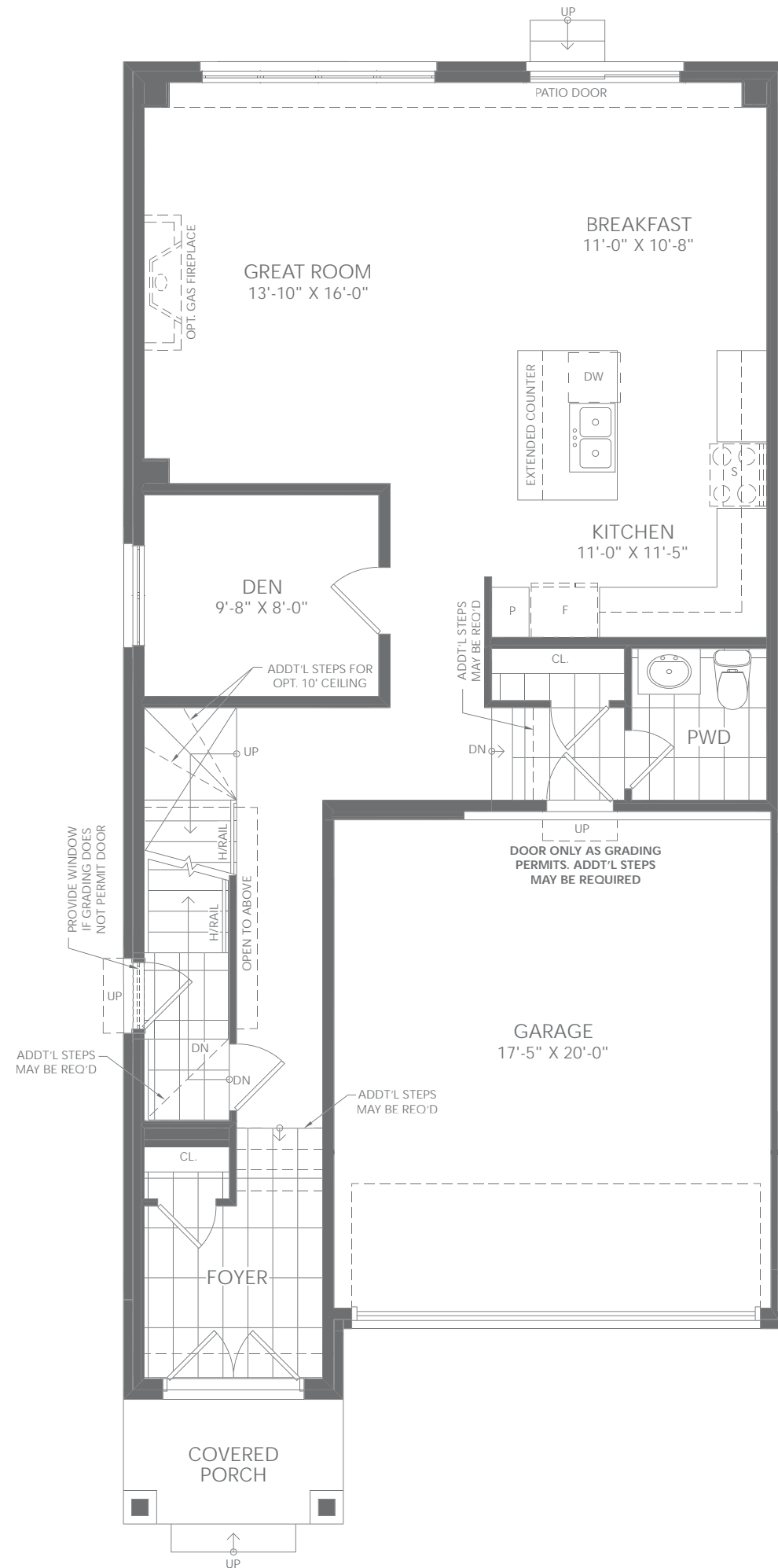
As part of Great Gulf's commitment to always deliver greater value, we bring you our new, exclusive and unprecedented collection of homes.

YOUR FULL HOUSE INCLUDES:

Finished basement with:

- Additional 5th bedroom
- Additional full bathroom
- Larger basement windows
- Full underslab insulation
- Main floor side door entry*

*As grading permits. E. & OE.



32' singles

the cameron

**4 BEDROOM
+ 3.5 BATH + LOFT**

Elevation B - 2,435 sq. ft.

Elevation C - 2,430 sq. ft.

BA33-9



Elevation B - 2,435 sq. ft.



Elevation C - 2,430 sq. ft.



32' singles



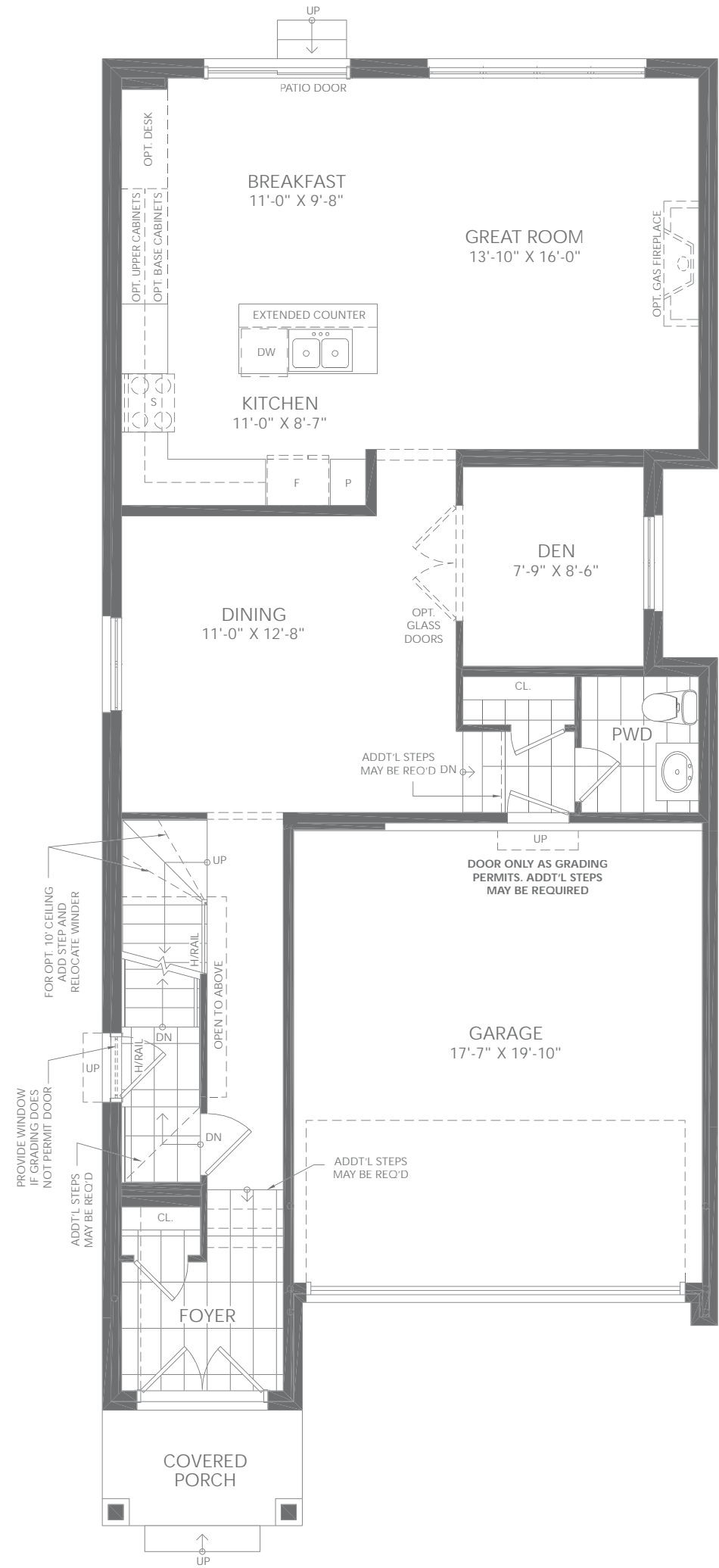
the cameron

**4 BEDROOM
+ 3.5 BATH + LOFT**

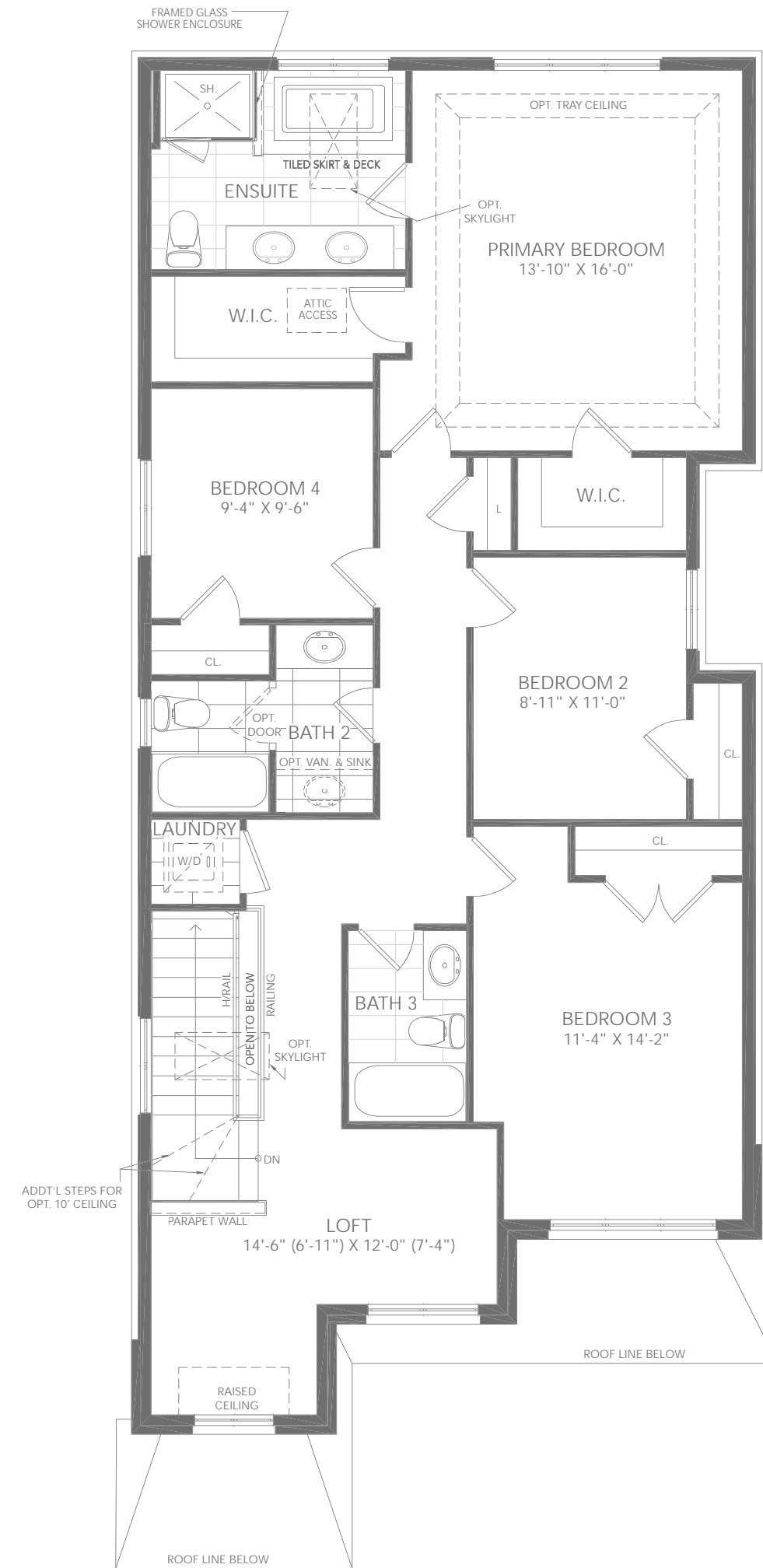
Elevation B - 2,435 sq. ft.

Elevation C - 2,430 sq. ft.

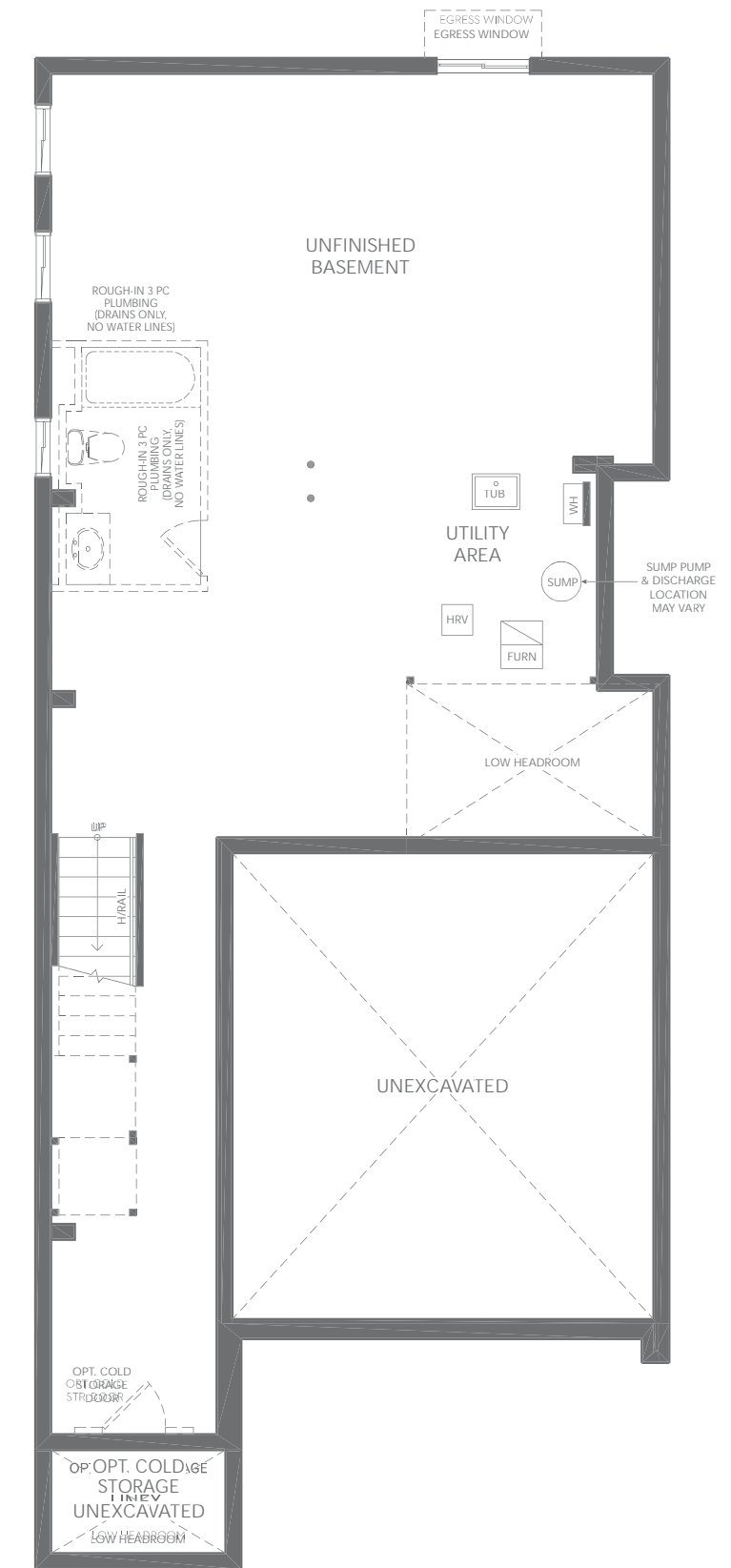
BA33-9



GROUND FLOOR PLAN B



SECOND FLOOR PLAN B



BASEMENT PLAN B

32' singles

the cameron

**5 BEDROOM
+ 4.5 BATH + LOFT**

Elevation B - 3,145 sq. ft.

Elevation C - 3,140 sq. ft.

All elevations include 710 sq. ft. of finished basement

BA33-9



Elevation B - 3,145 sq. ft.



Elevation C - 3,140 sq. ft.



32' singles

 **GREAT GULF**



the cameron

5 BEDROOM + 4.5 BATH + LOFT

Elevation B - 3,145 sq. ft.

Elevation C - 3,140 sq. ft.

All elevations include 710 sq. ft. of finished basement

BA33-9

fullhouse
EDITION

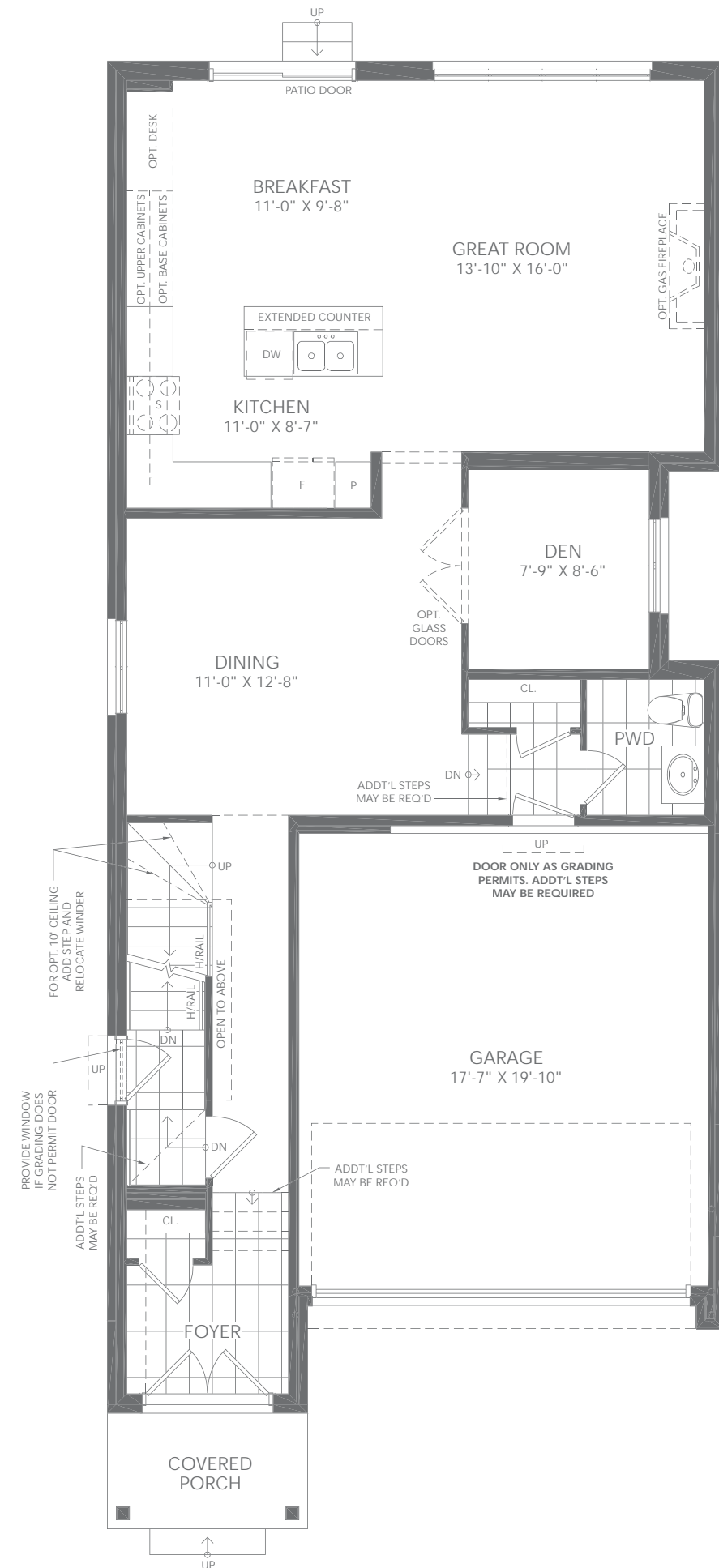
As part of Great Gulf's commitment to always deliver greater value, we bring you our new, exclusive and unprecedented collection of homes.

YOUR FULL HOUSE INCLUDES:

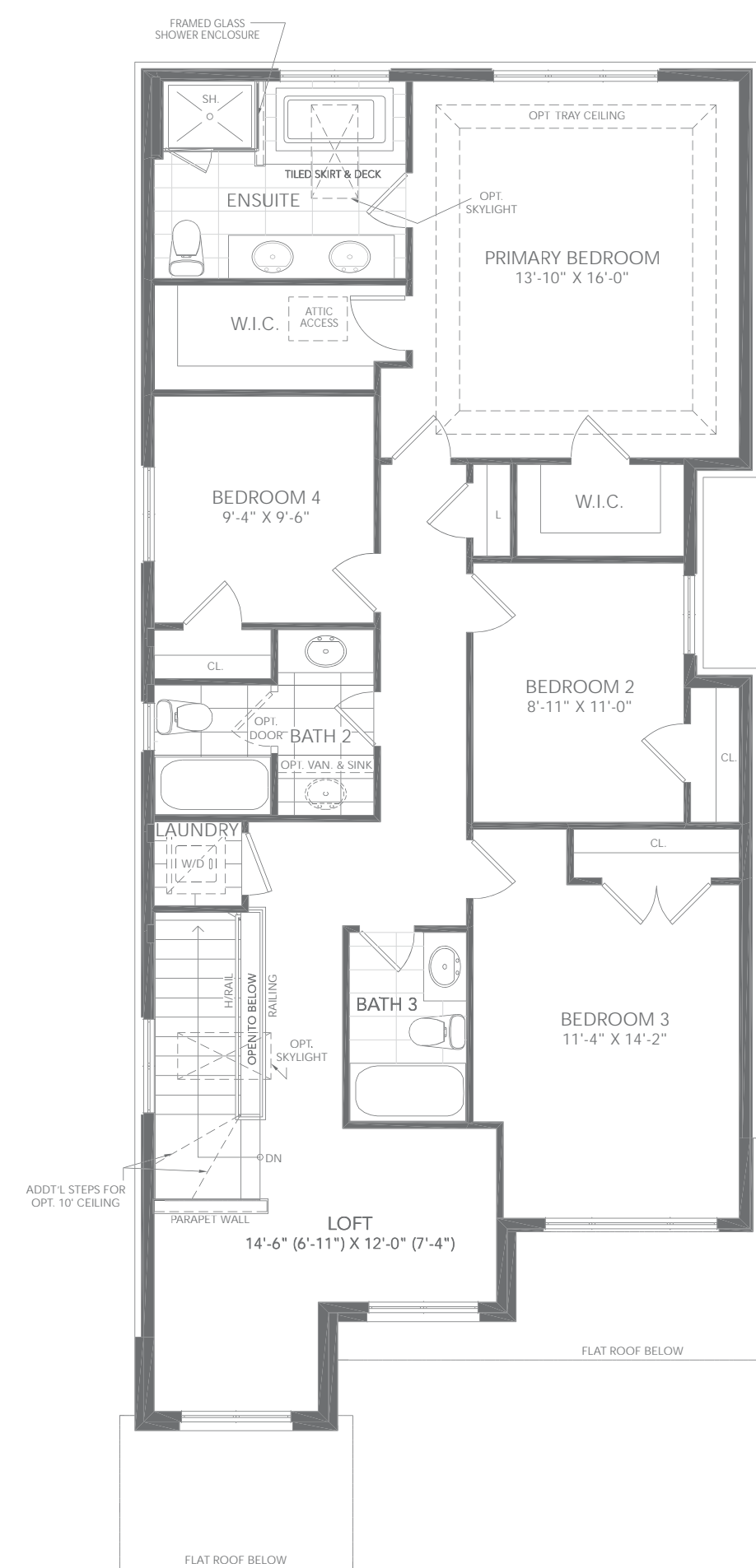
Finished basement with:

- Additional 5th bedroom
- Additional full bathroom
- Larger basement windows
- Full underslab insulation
- Main floor side door entry*

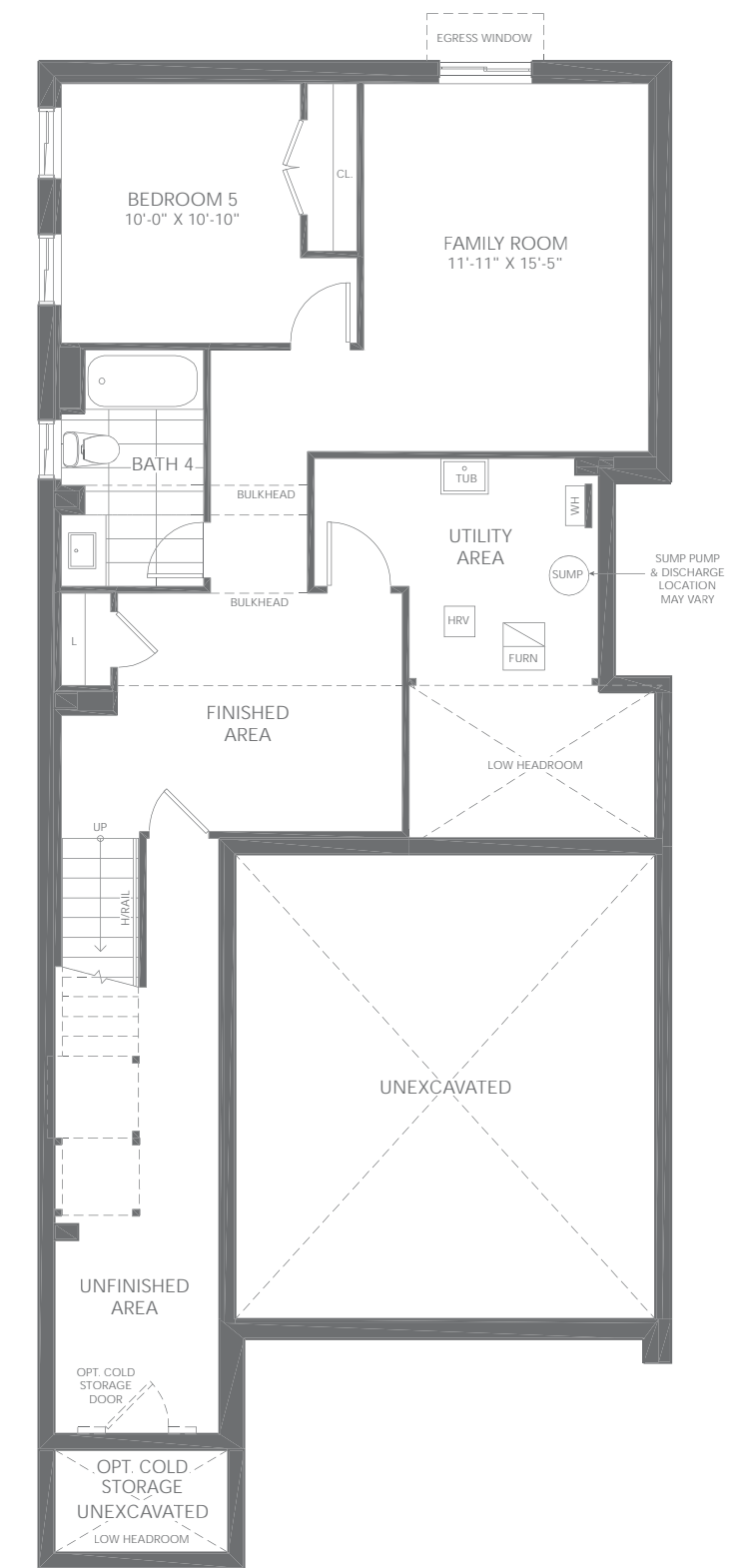
*As grading permits. E. & OE.



GROUND FLOOR PLAN C



SECOND FLOOR PLAN C



BASEMENT PLAN C

32' singles

the stony

**4 BEDROOM
+ 2.5 BATH**

Elevation B - 1,850 sq. ft.

Elevation C - 1,835 sq. ft.

BA33-10



Elevation B - 1,850 sq. ft.



Elevation C - 1,835 sq. ft.



32' singles



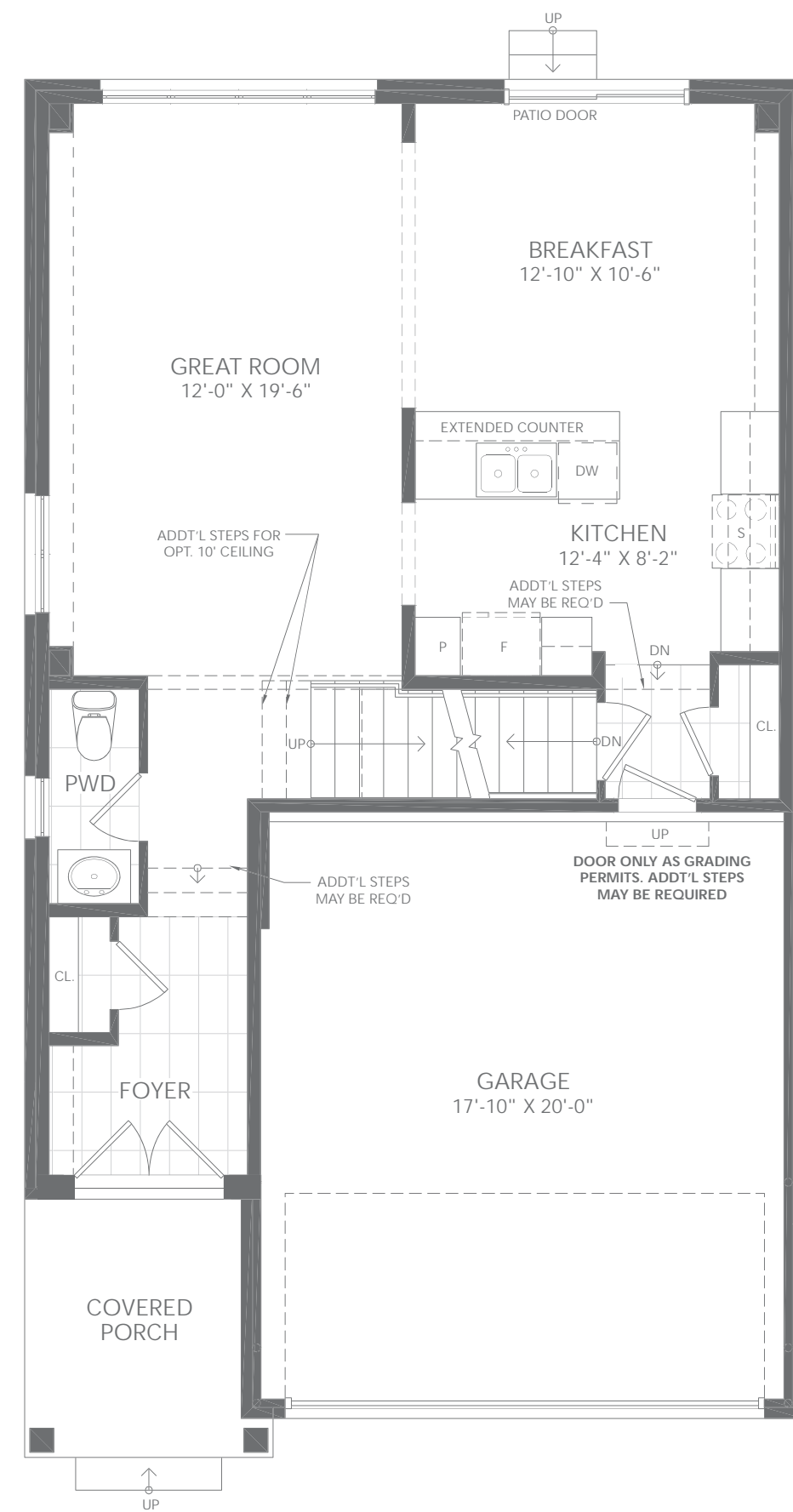
the stony

4 BEDROOM + 2.5 BATH

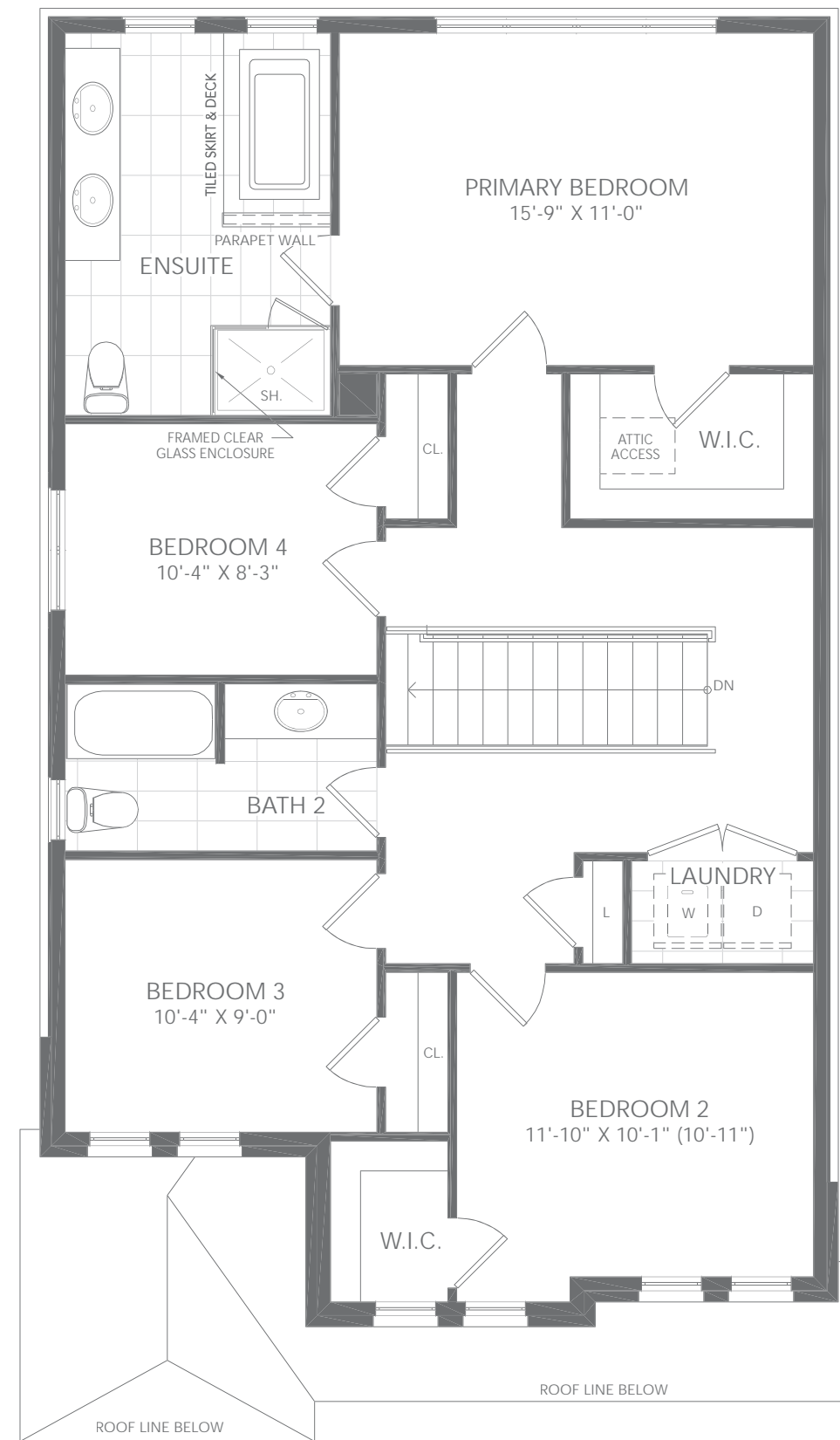
Elevation B - 1,850 sq. ft.

Elevation C - 1,835 sq. ft.

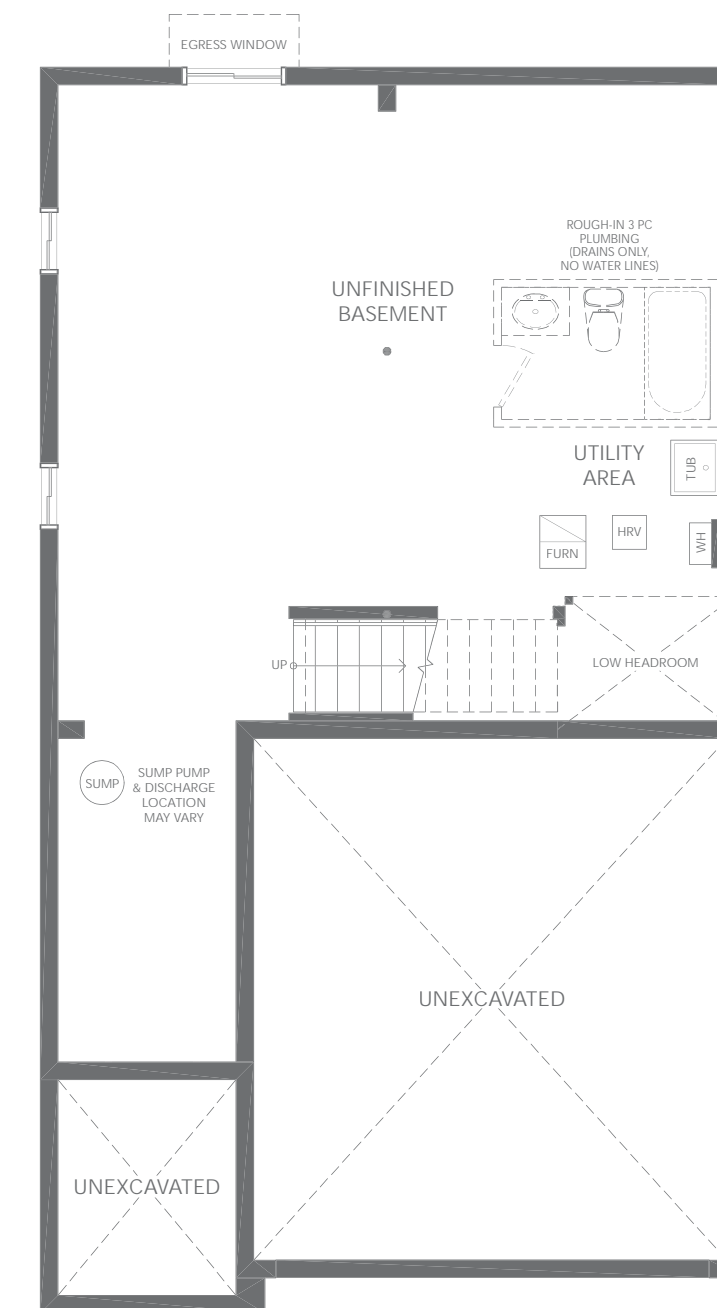
BA33-10



GROUND FLOOR PLAN B



SECOND FLOOR PLAN B



BASEMENT PLAN B

32' singles

**the
arlo**

**4-5 BEDROOM
+ 3.5 BATH + LOFT**

Elevation C - 2,570 sq. ft.

BA33-11



Elevation C - 2,570 sq. ft.



32' singles

 **GREAT GULF**

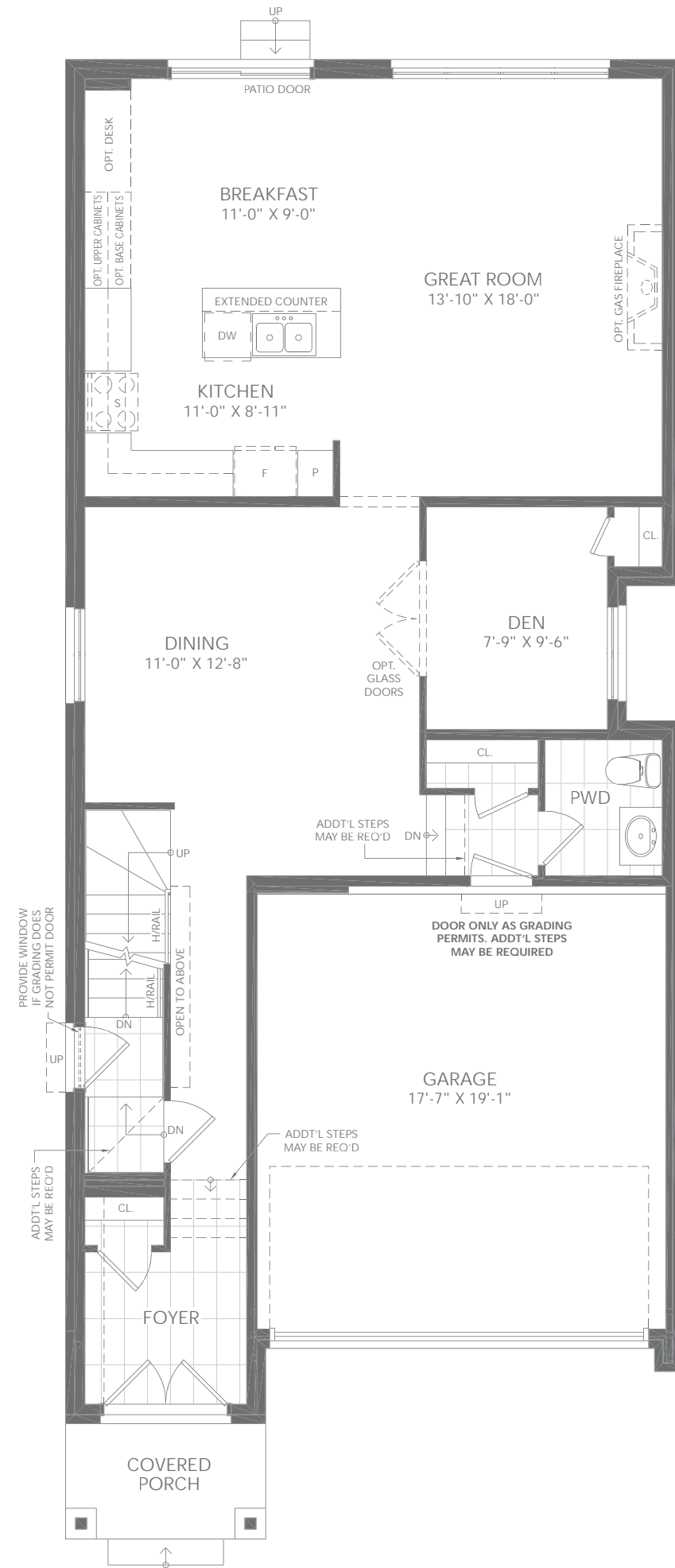


the arlo

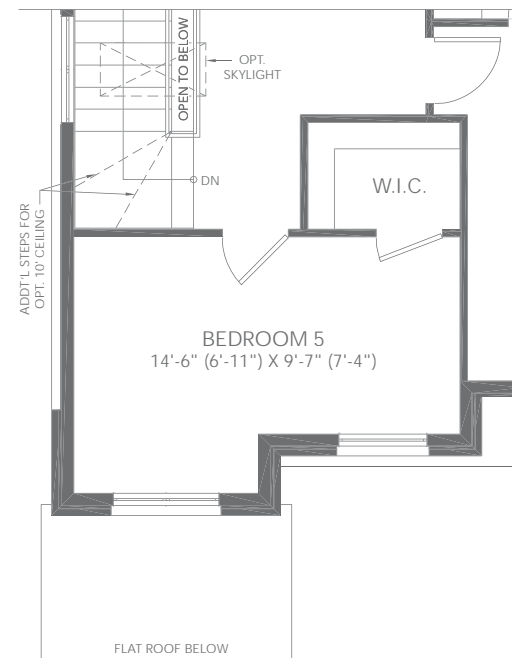
**4-5 BEDROOM
+ 3.5 BATH + LOFT**

Elevation C- 2,570 sq. ft.

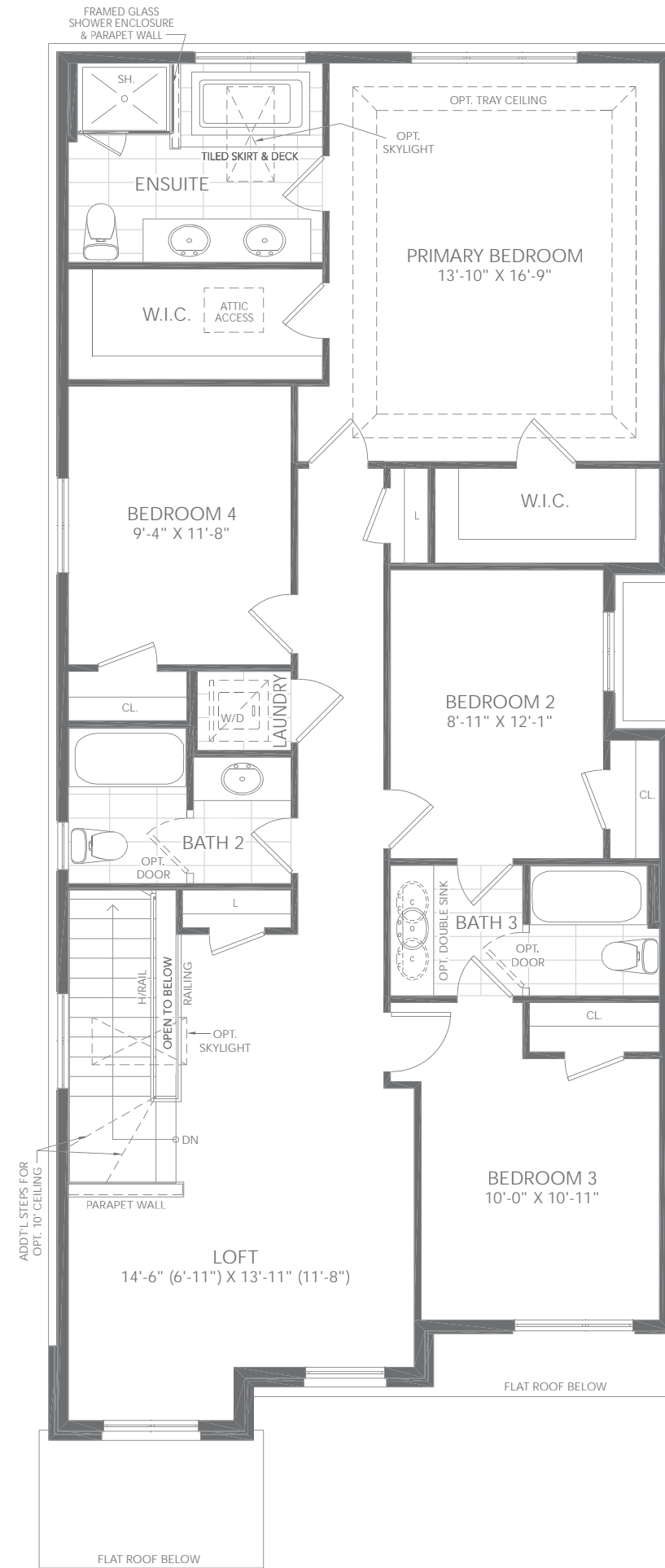
BA33-11



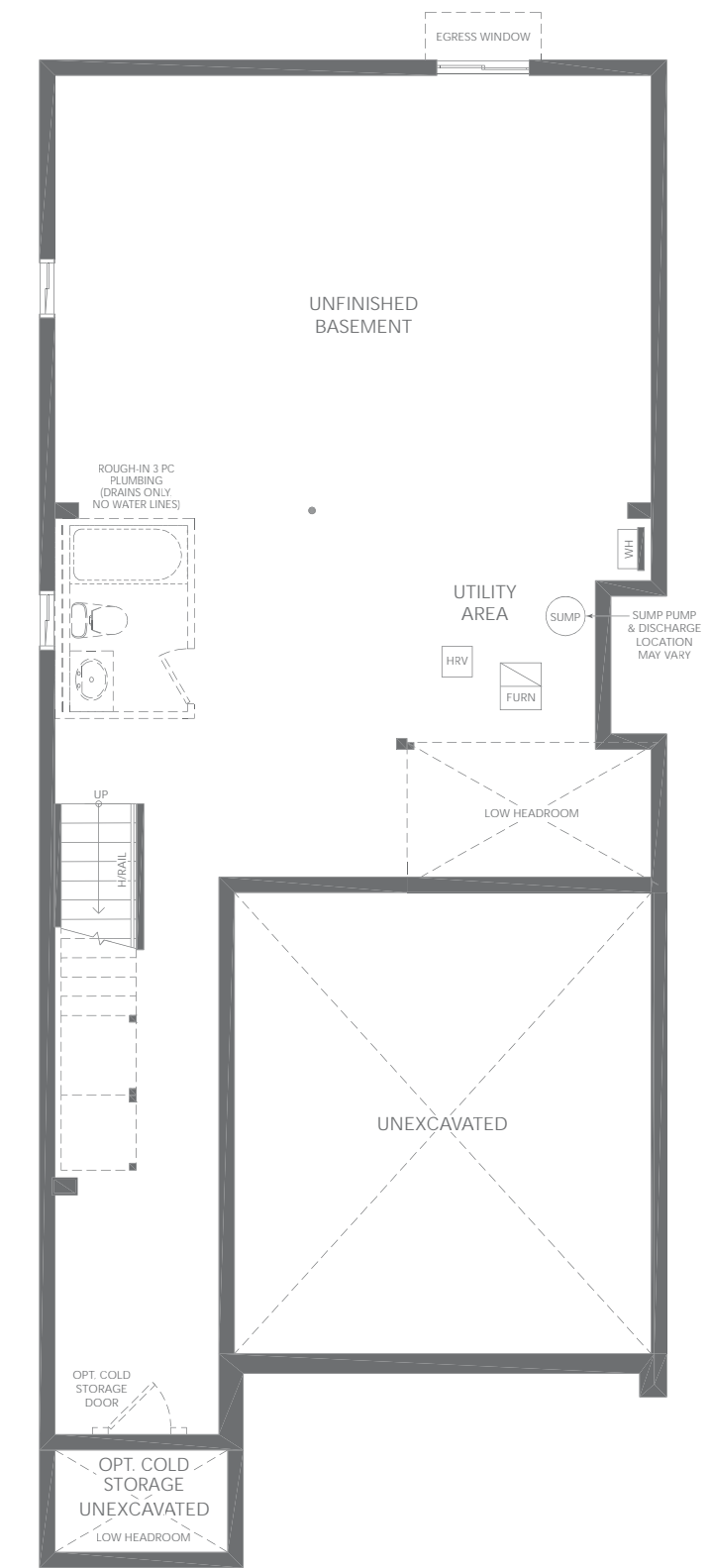
GROUND FLOOR PLAN C



PARTIAL PLAN
OPT. 5TH BEDROOM



SECOND FLOOR PLAN C



BASEMENT PLAN C

32' singles

the morraine

4 BEDROOM + 3.5 BATH

Elevation A - 2,170 sq. ft.

Elevation B - 2,180 sq. ft.

Elevation C - 2,170 sq. ft.

BA38-9



Elevation B - 2,180 sq. ft.



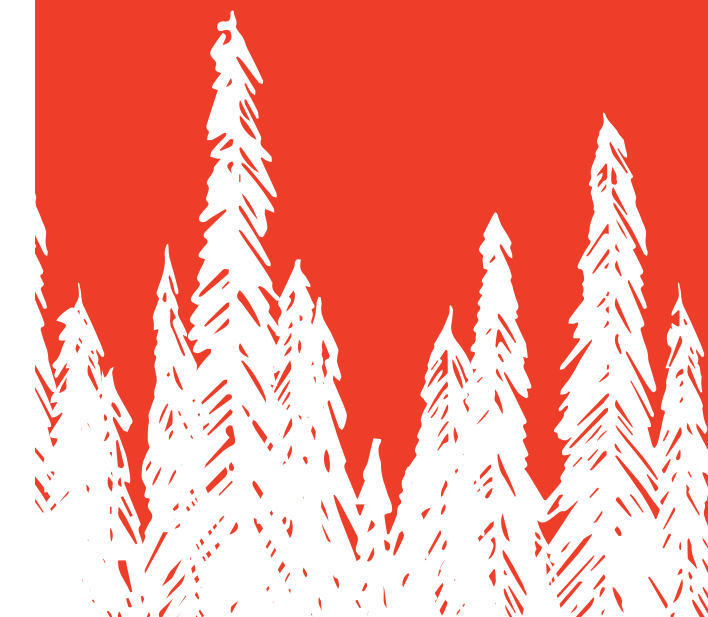
Elevation C - 2,170 sq. ft.



Elevation A - 2,170 sq. ft.



38' singles



the morraine

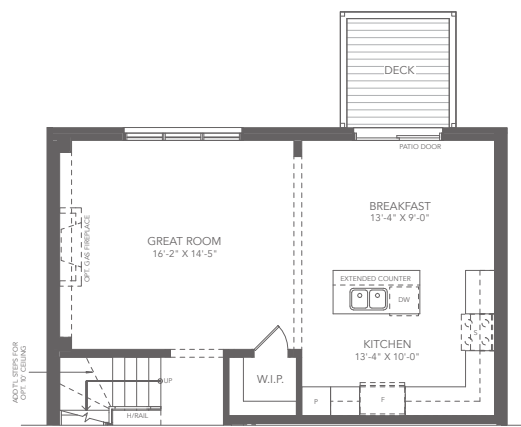
4 BEDROOM + 3.5 BATH

Elevation A - 2,170 sq. ft.

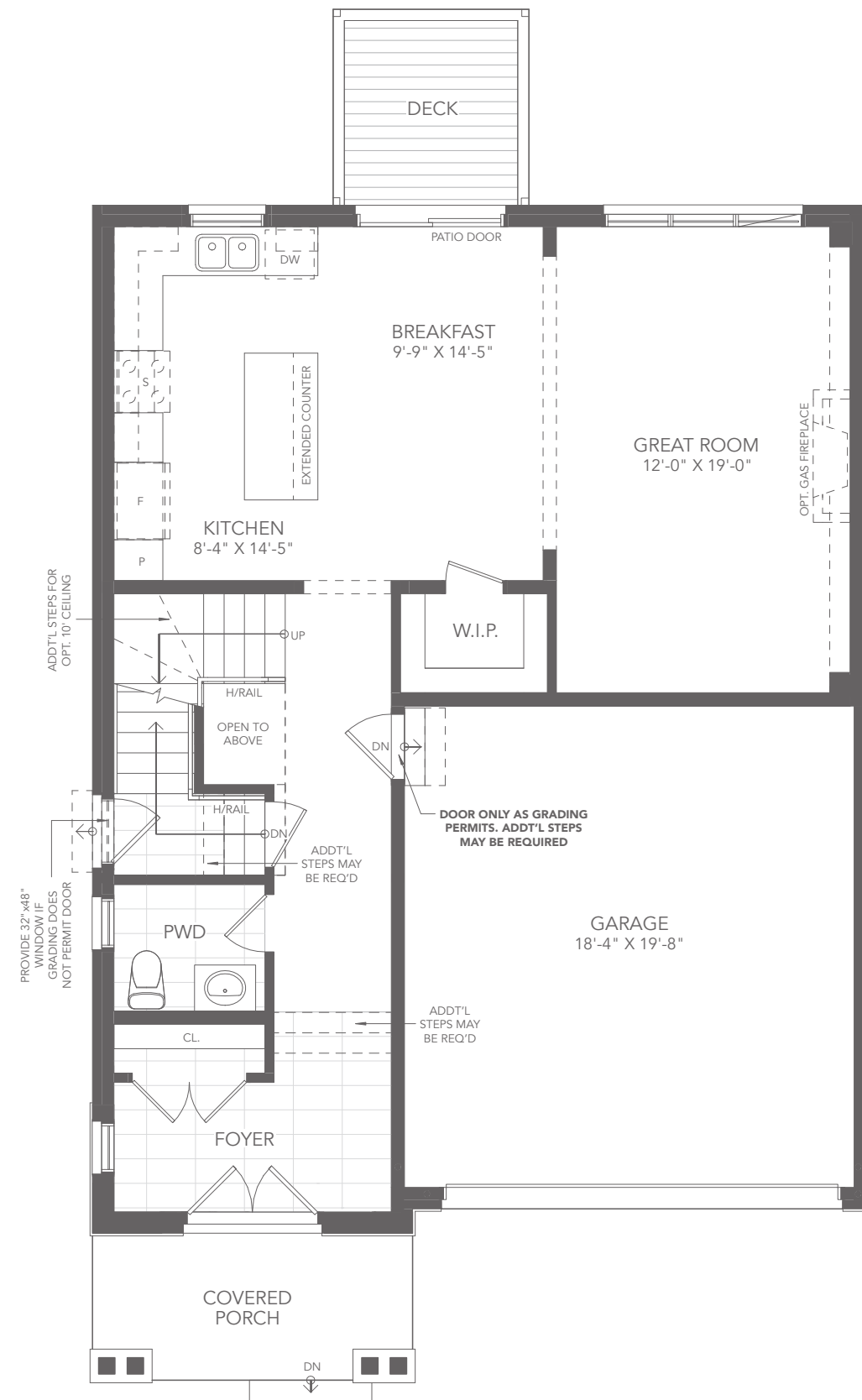
Elevation B - 2,180 sq. ft.

Elevation C - 2,170 sq. ft.

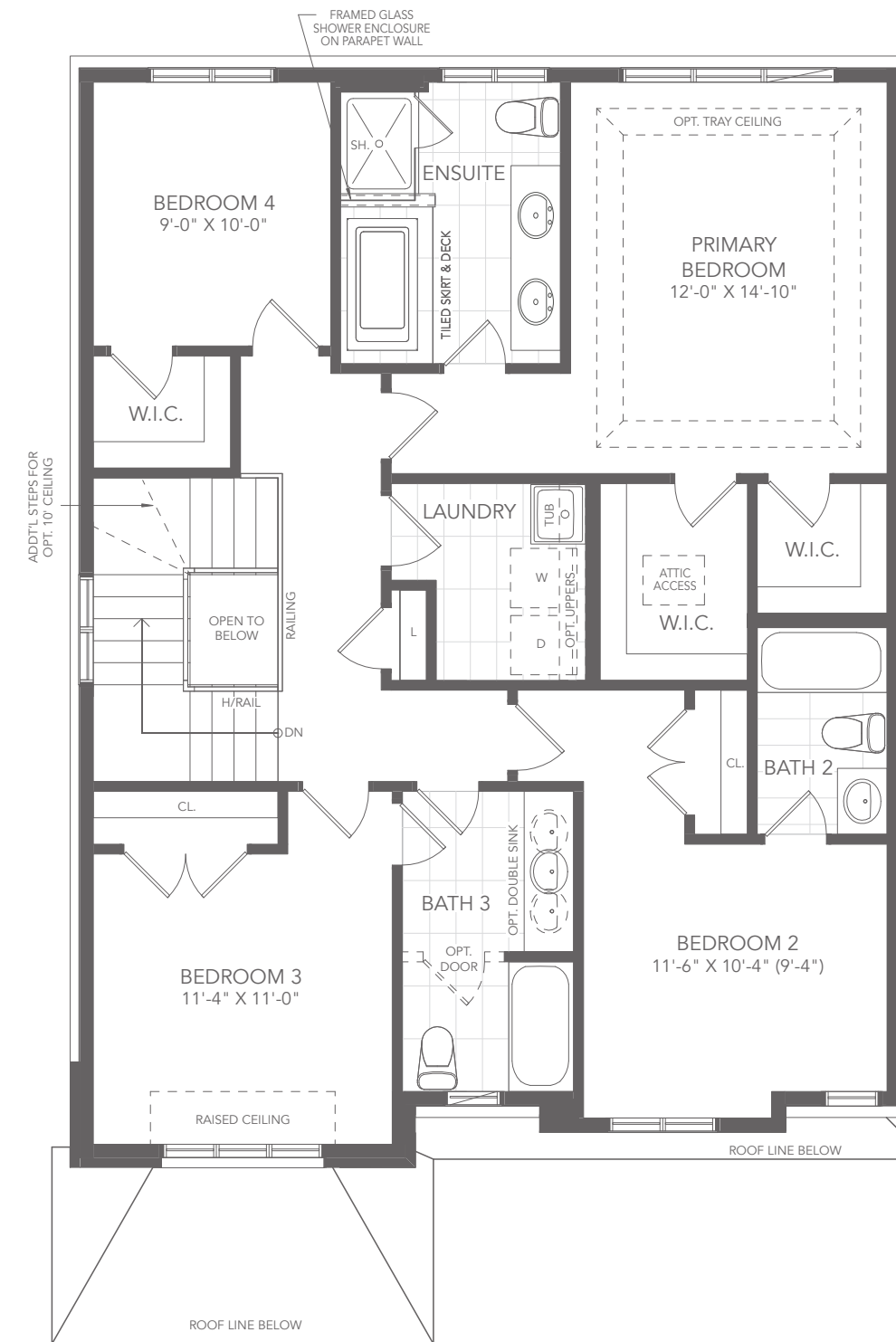
BA38-9



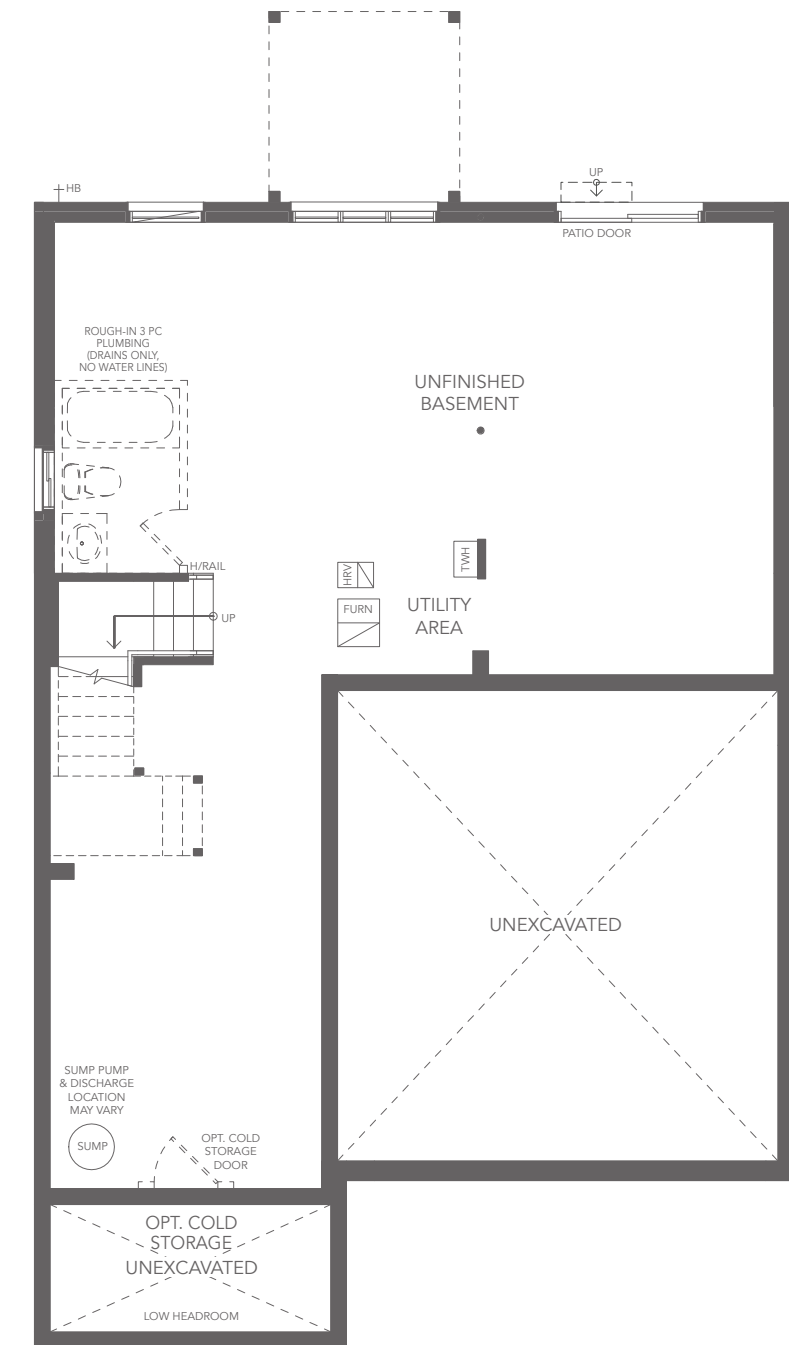
PARTIAL GROUND FLOOR PLAN
OPT. GREAT ROOM & KITCHEN



GROUND FLOOR PLAN A



SECOND FLOOR PLAN A



BASEMENT PLAN A

38' singles

the morraine

**5 BEDROOM
+ 4.5 BATH**

Elevation A - 2,790 sq. ft.

Elevation B - 2,800 sq. ft.

Elevation C - 2,790 sq. ft.

All elevations include 620 sq. ft. of finished basement area

BA38-9



Elevation A - 2,790 sq. ft.



Elevation B - 2,800 sq. ft.



Elevation C - 2,790 sq. ft.

fullhouse
EDITION

TERRA
A GREAT GULF COMMUNITY IN BARRIE

38' singles

 **GREAT GULF**

the morraine

5 BEDROOM + 4.5 BATH

Elevation A - 2,790 sq. ft.

Elevation B - 2,800 sq. ft.

Elevation C - 2,790 sq. ft.

All elevations include 620 sq. ft. of finished basement area

BA38-9

fullhouse
EDITION

As part of Great Gulf's commitment to always deliver greater value, we bring you our new, exclusive and unprecedented collection of homes.

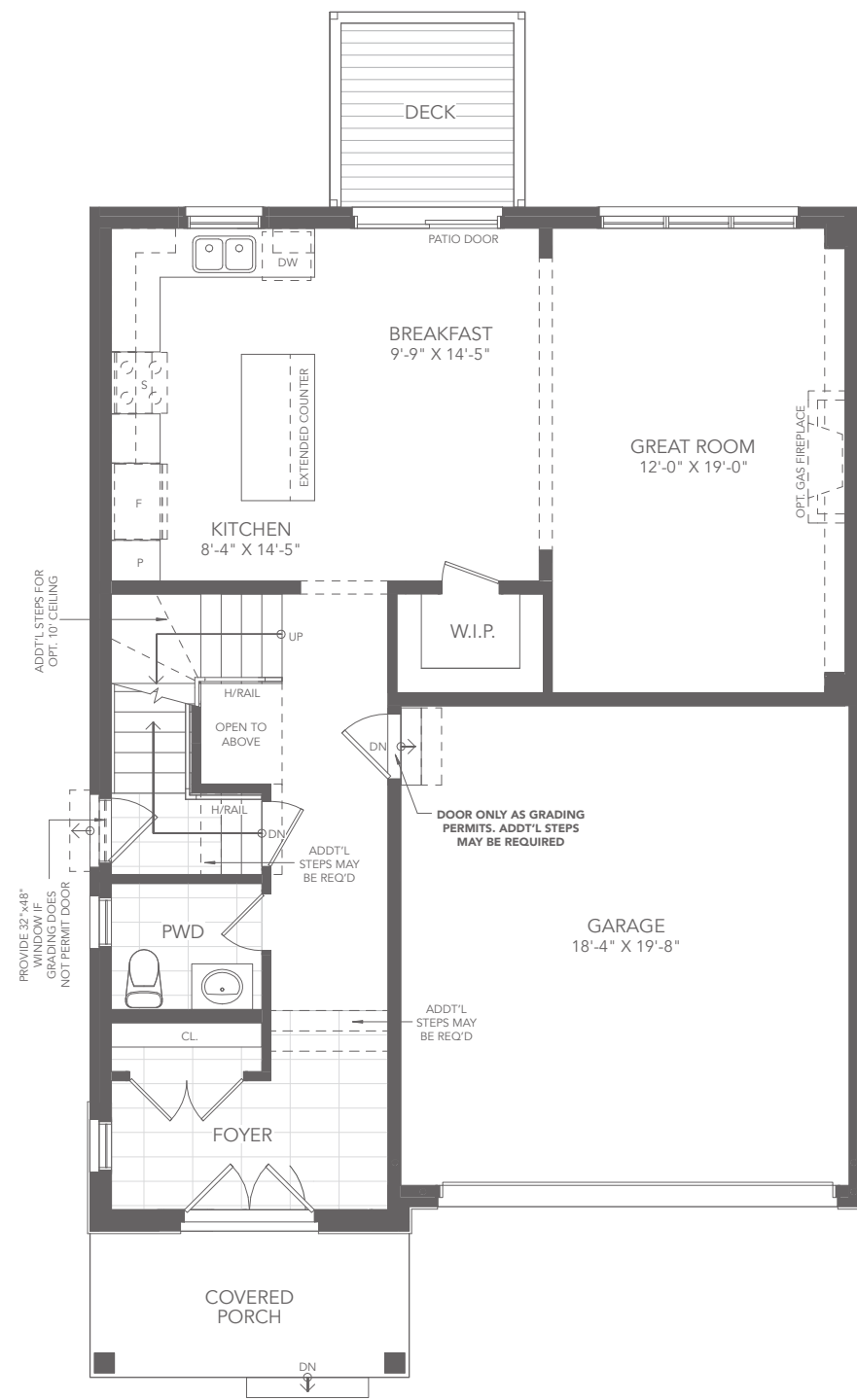
YOUR FULL HOUSE INCLUDES:

Finished basement with:

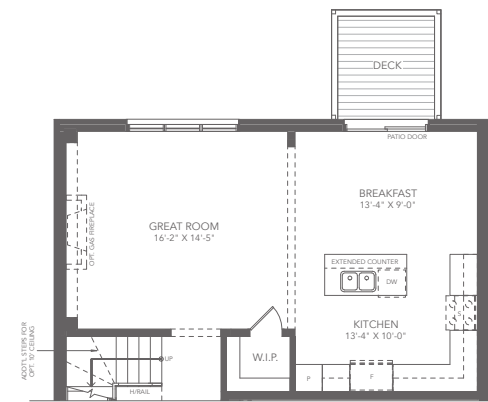
- Additional 5th bedroom
- Additional full bathroom
- Larger basement windows
- Full underslab insulation
- Main floor side door entry*

*As grading permits. E. & OE.

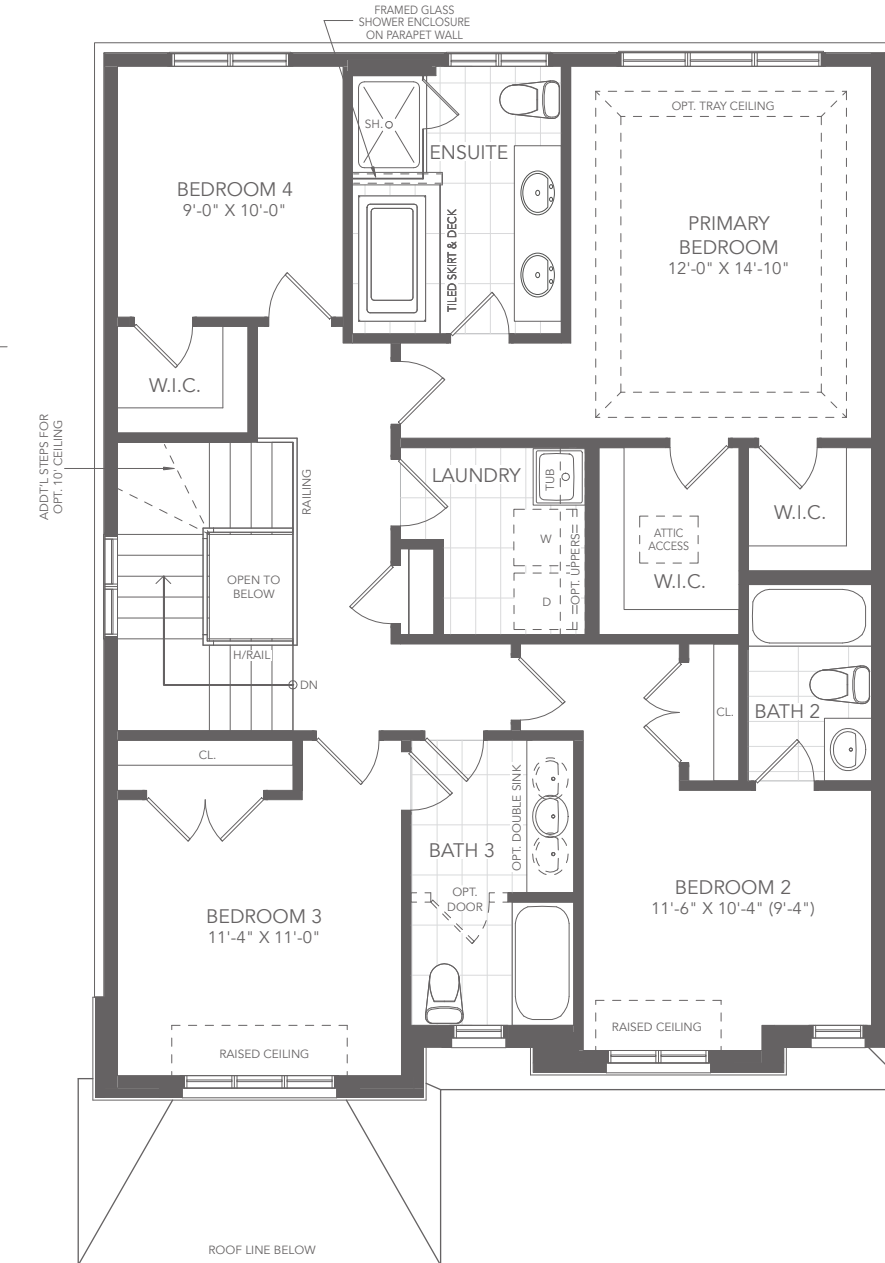
GREAT GULF



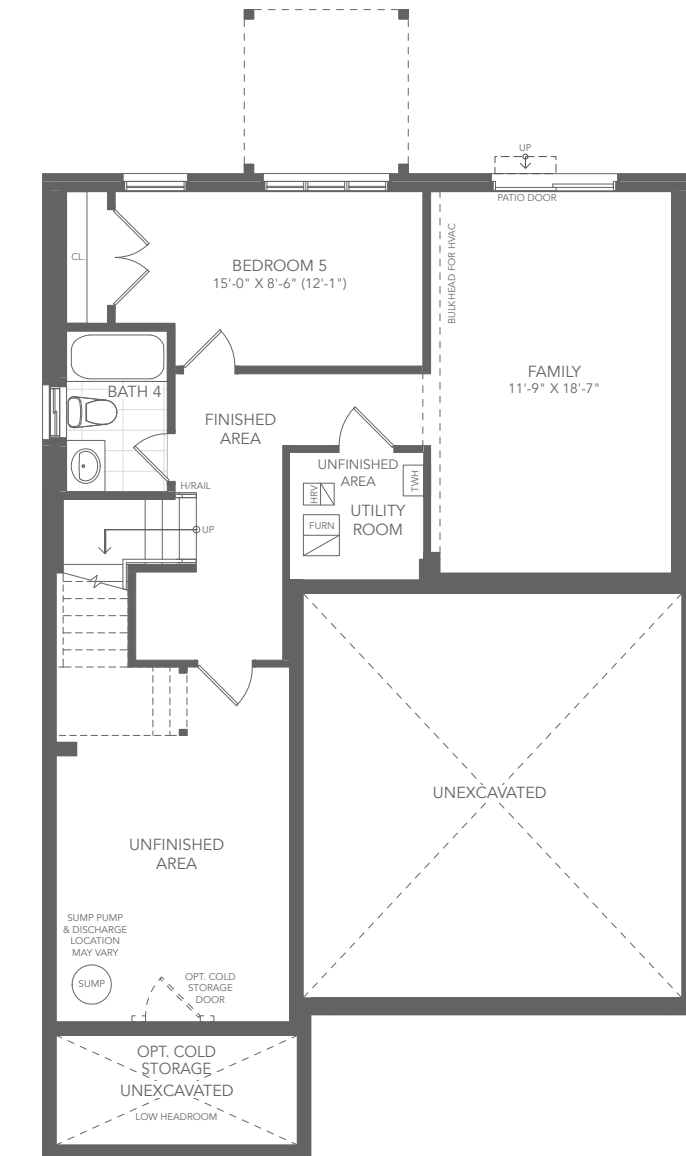
GROUND FLOOR PLAN B



PARTIAL GROUND FLOOR PLAN
OPT. GREAT ROOM & KITCHEN



SECOND FLOOR PLAN B



BASEMENT PLAN B

All illustrations are artist's concept. All dimensions are approximate. Sizes and specifications are subject to change without notice. Note: Actual usable floor space may vary from the stated floor area. Actual layout may be reverse of layout shown. E. & O.E.

38' singles



the redstone

4 BEDROOM + 3.5 BATH

Elevation A - 2,445 sq. ft.

Elevation B - 2,440 sq. ft.

Elevation C - 2,435 sq. ft.

BA38-10



Elevation B - 2,440 sq. ft.



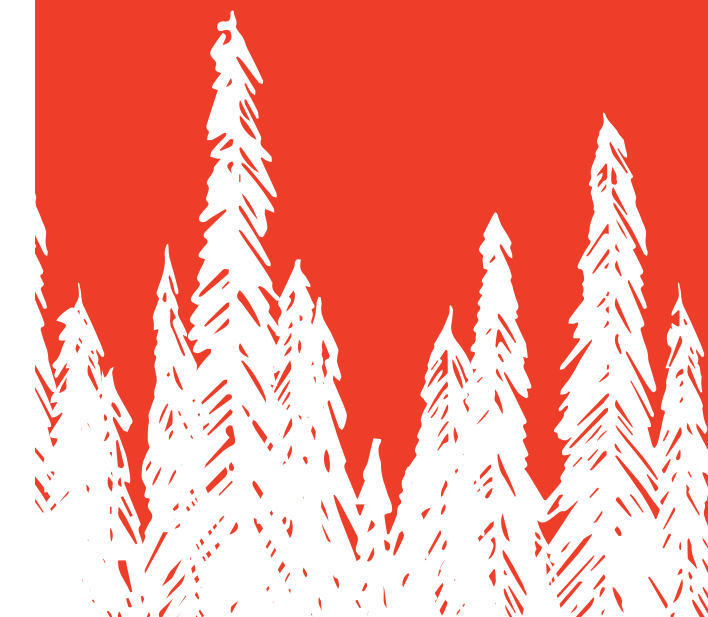
Elevation C - 2,435 sq. ft.



Elevation A - 2,445 sq. ft.



38' singles



the redstone

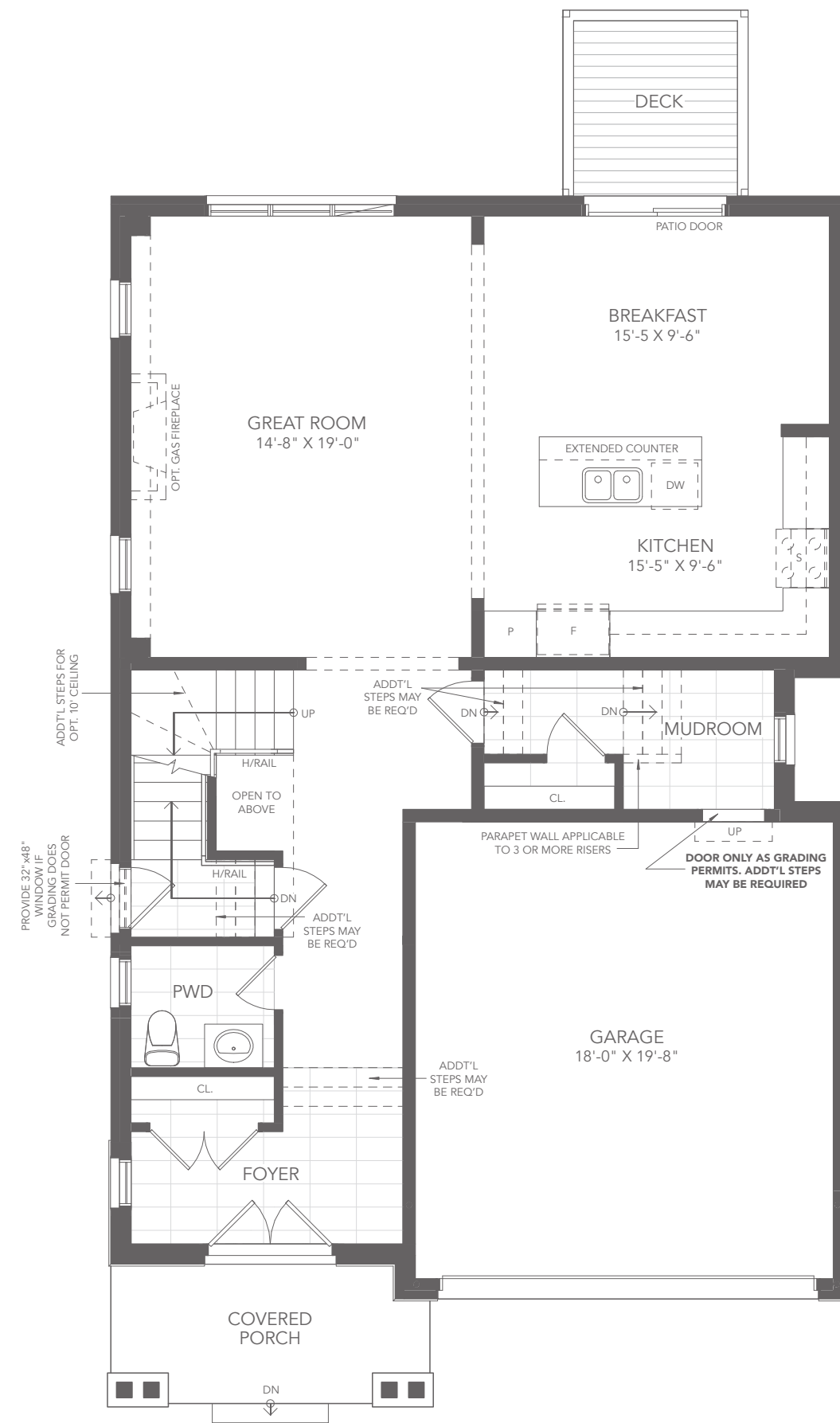
4 BEDROOM + 3.5 BATH

Elevation A - 2,445 sq. ft.

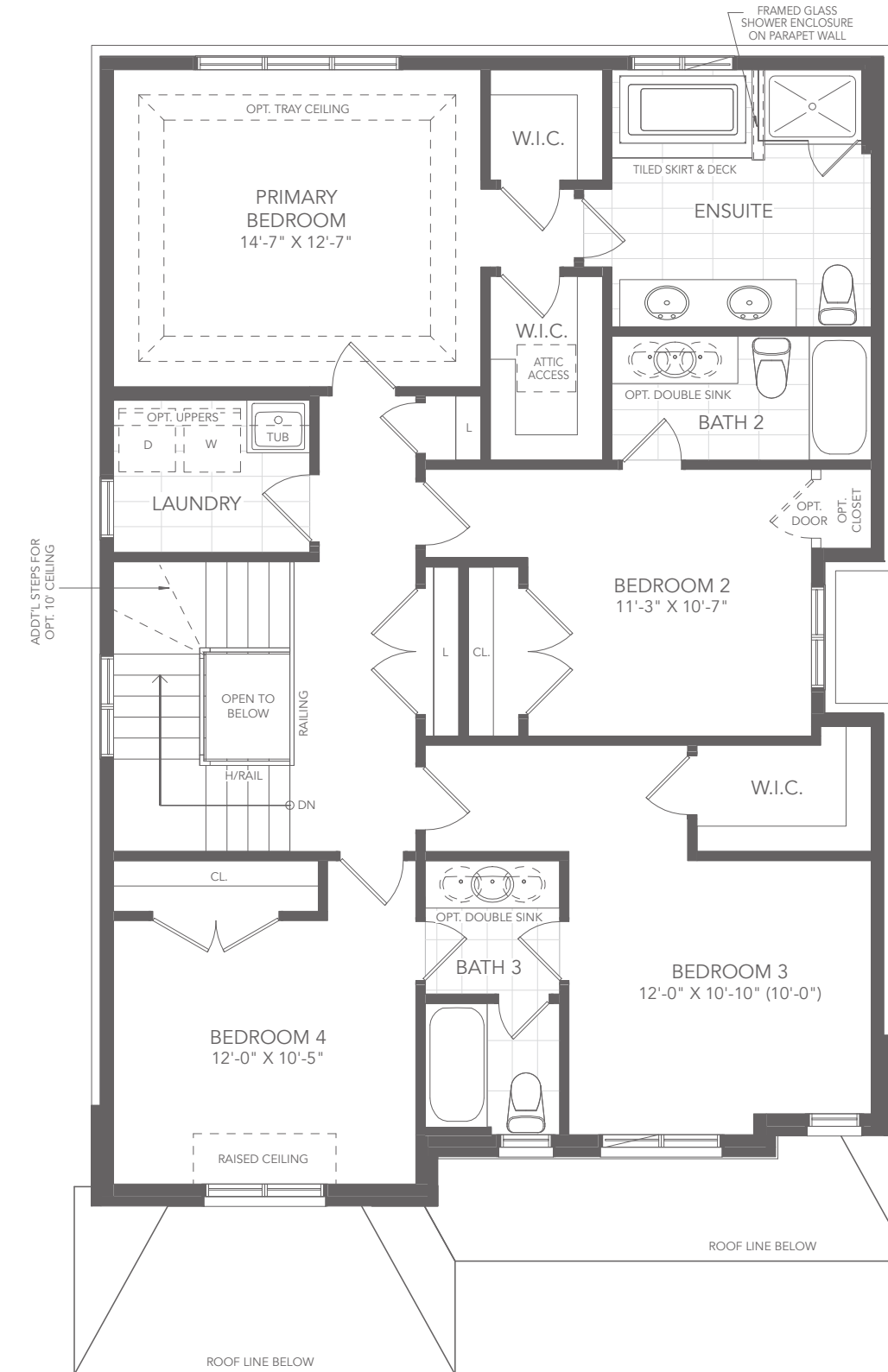
Elevation B - 2,440 sq. ft.

Elevation C - 2,435 sq. ft.

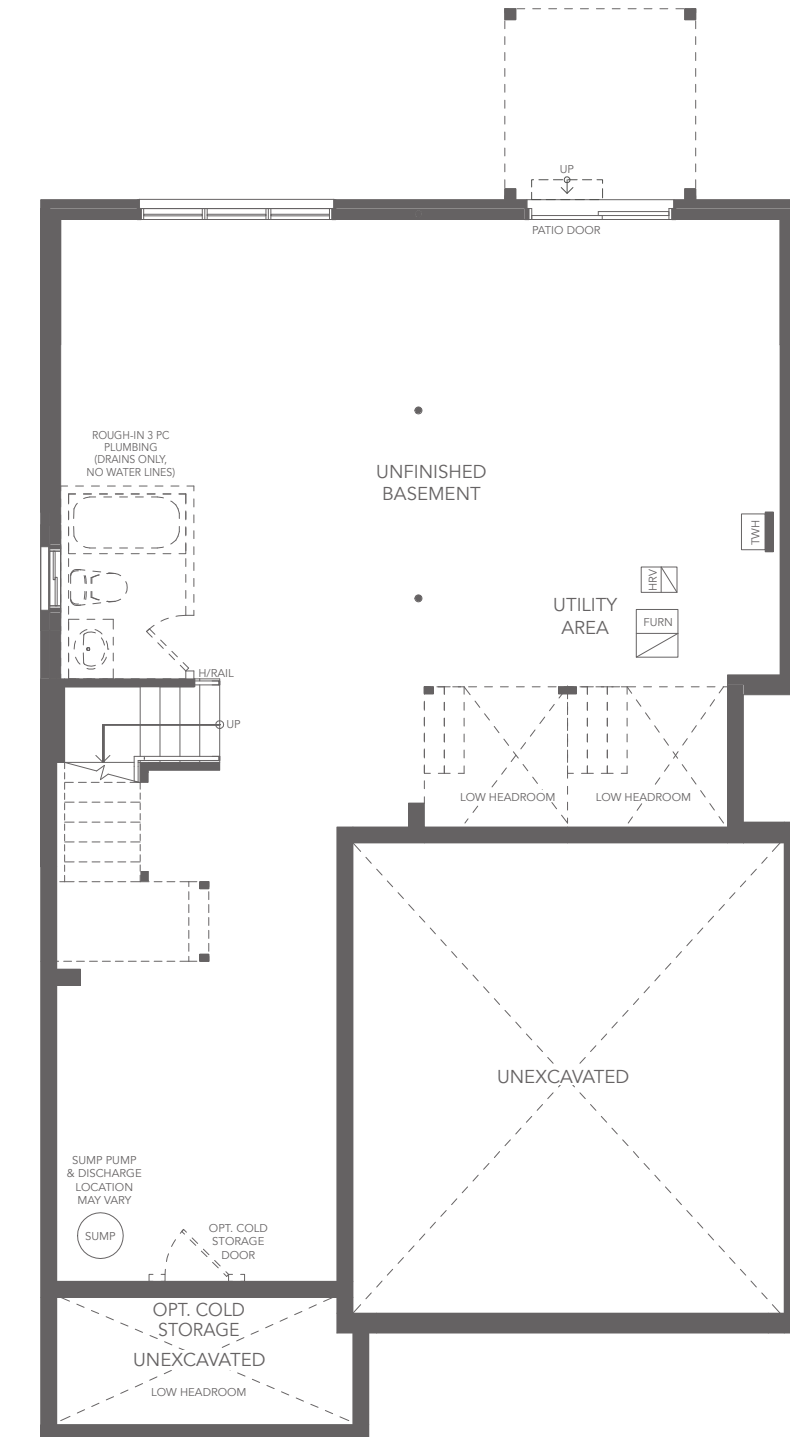
BA38-10



GROUND FLOOR PLAN A



SECOND FLOOR PLAN A



BASEMENT PLAN A

38' singles

the redstone

**5 BEDROOM
+ 4.5 BATH**

Elevation A - 3,095 sq. ft.

Elevation B - 3,090 sq. ft.

Elevation C - 3,085 sq. ft.

All elevations include 650 sq. ft. of finished basement area

BA38-10



Elevation A - 3,095 sq. ft.



Elevation B - 3,090 sq. ft.



Elevation C - 3,085 sq. ft.

fullhouse
EDITION

TERRA
A GREAT GULF COMMUNITY IN BARRIE

38' singles

 **GREAT GULF**

the redstone

5 BEDROOM + 4.5 BATH

Elevation A - 3,095 sq. ft.

Elevation B - 3,090 sq. ft.

Elevation C - 3,085 sq. ft.

All elevations include 650 sq. ft. of finished basement area

BA38-10

fullhouse
EDITION

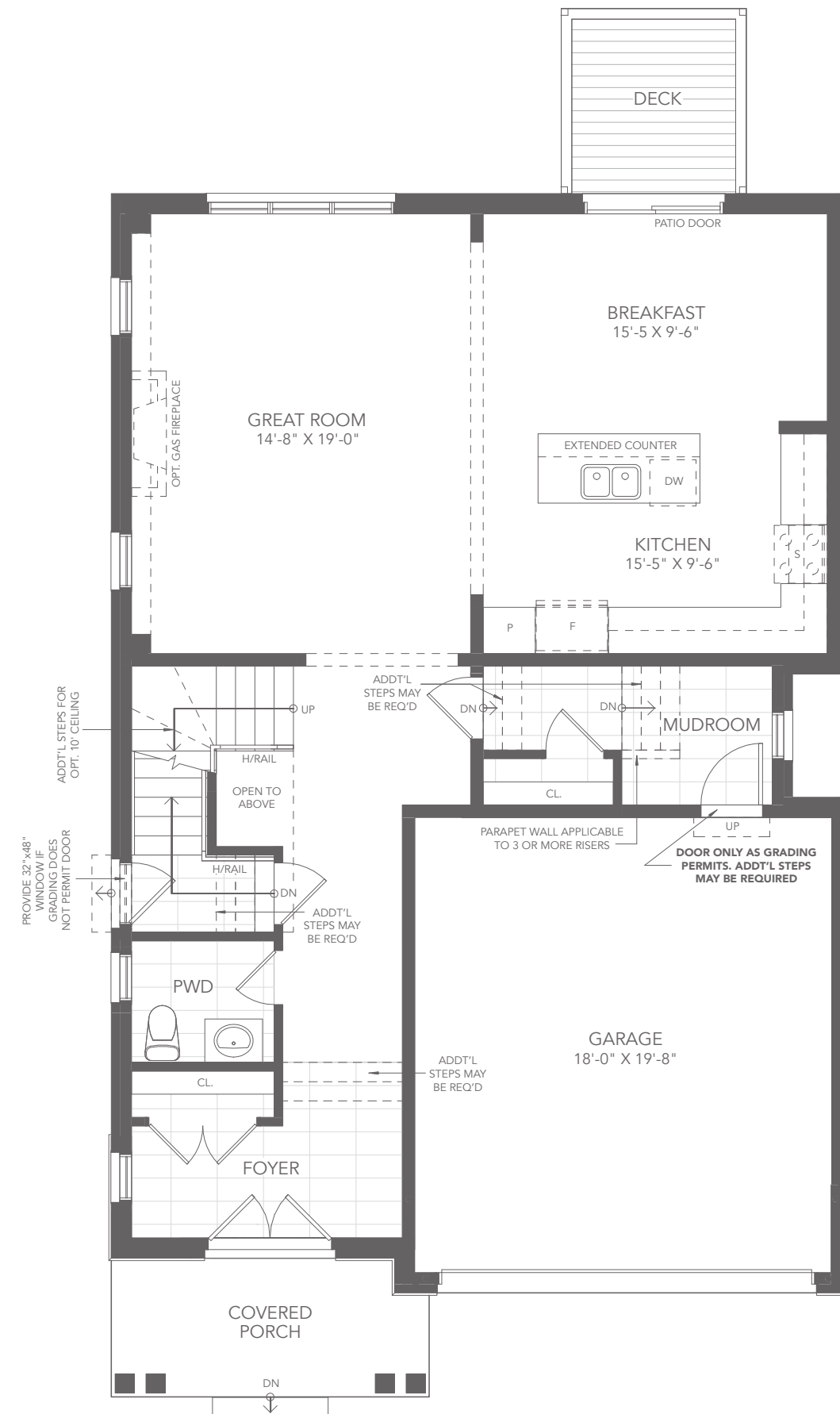
As part of Great Gulf's commitment to always deliver greater value, we bring you our new, exclusive and unprecedented collection of homes.

YOUR FULL HOUSE INCLUDES:

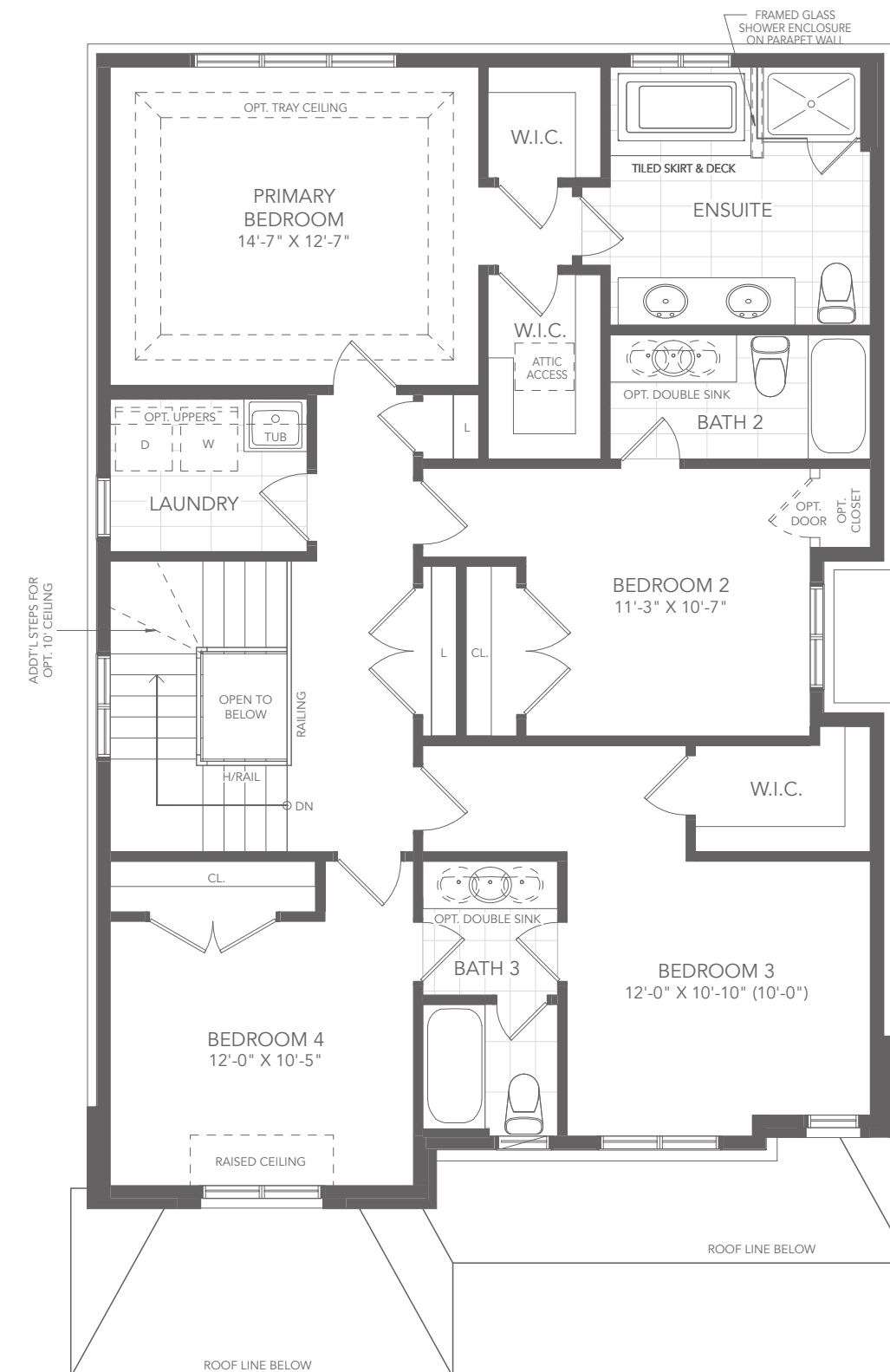
Finished basement with:

- Additional 5th bedroom
- Additional full bathroom
- Larger basement windows
- Full underslab insulation
- Main floor side door entry*

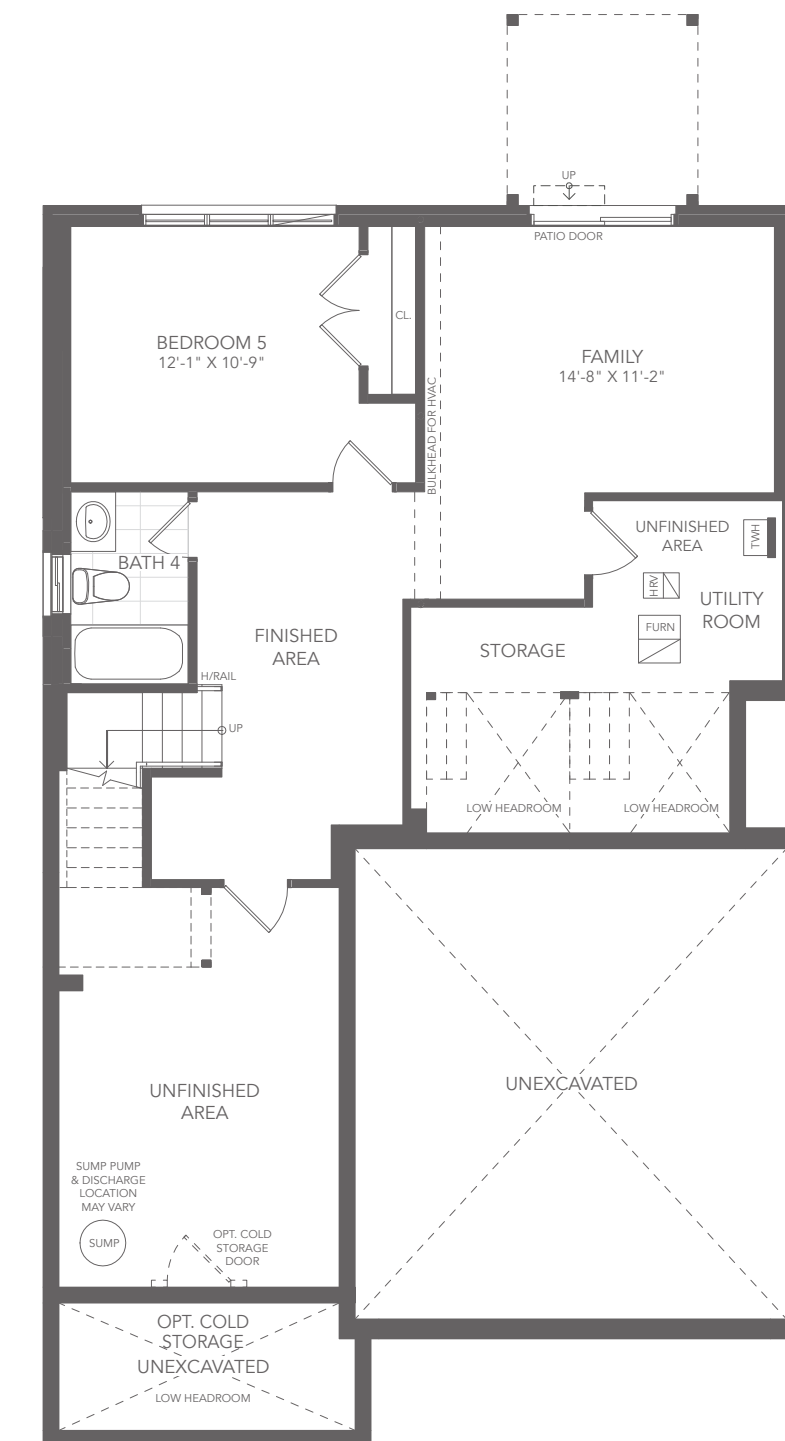
*As grading permits. E. & OE.



GROUND FLOOR PLAN B



SECOND FLOOR PLAN B



BASEMENT PLAN B

38' singles

the florence

4 BEDROOM + 3.5 BATH

Elevation B - 2,615 sq. ft.

Elevation C - 2,610 sq. ft.

BA38-12



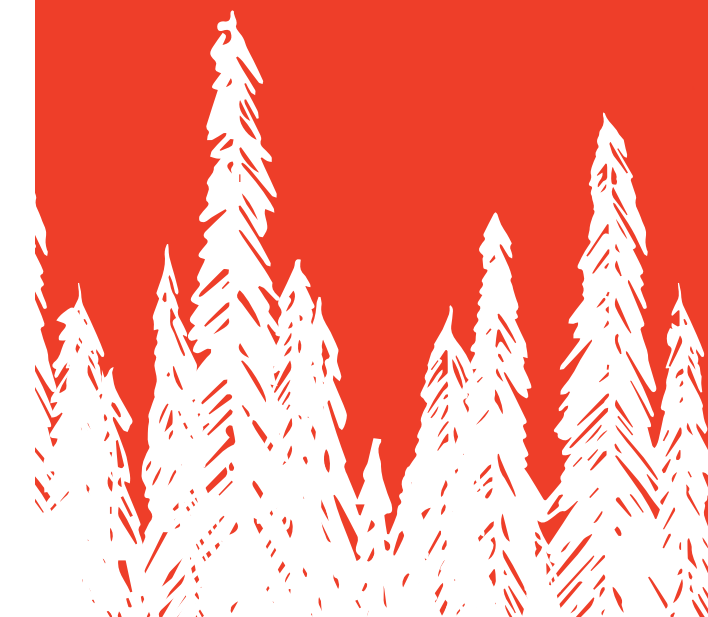
Elevation B - 2,615 sq. ft.



Elevation C - 2,610 sq. ft.



38' singles



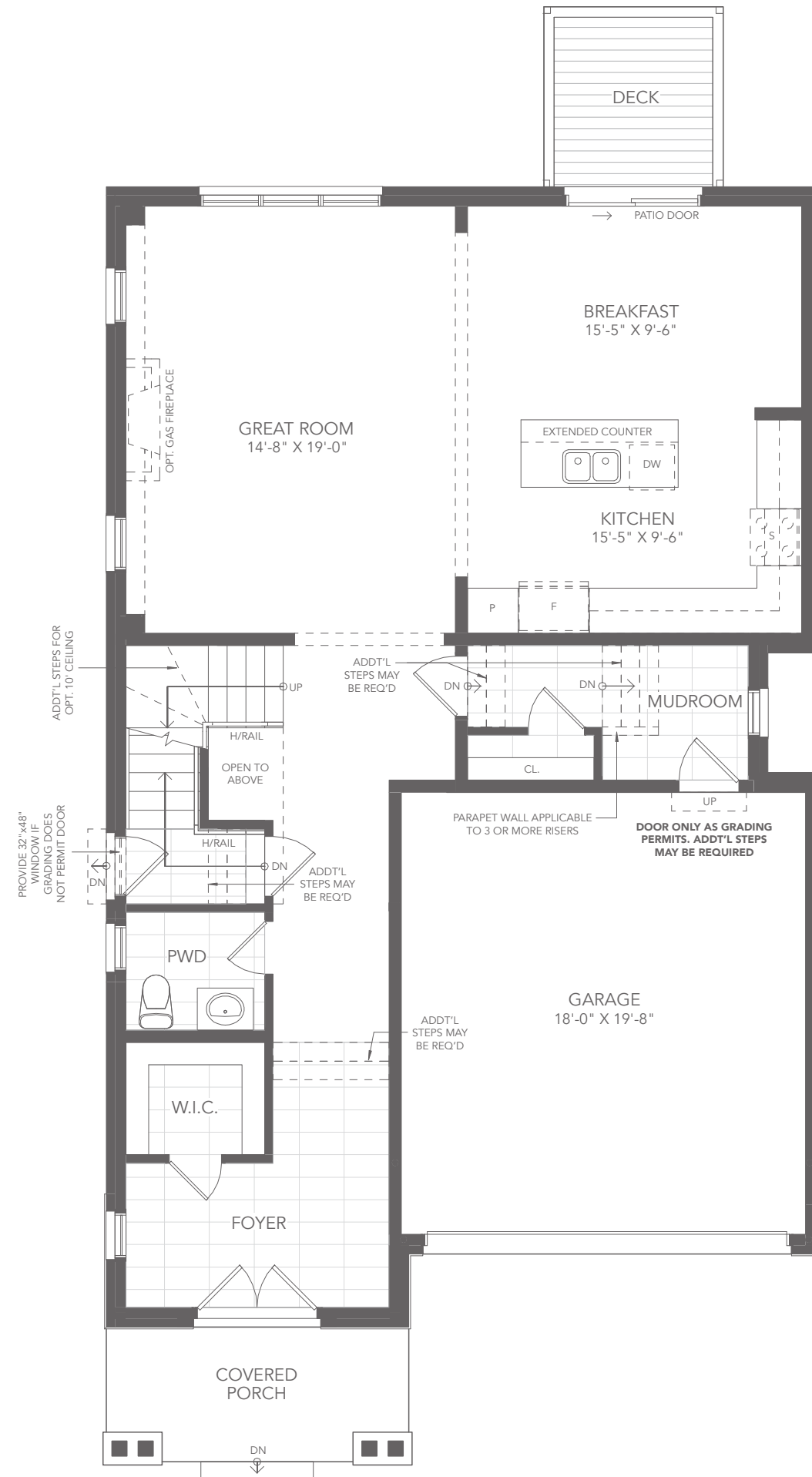
the florence

**4 BEDROOM
+ 3.5 BATH**

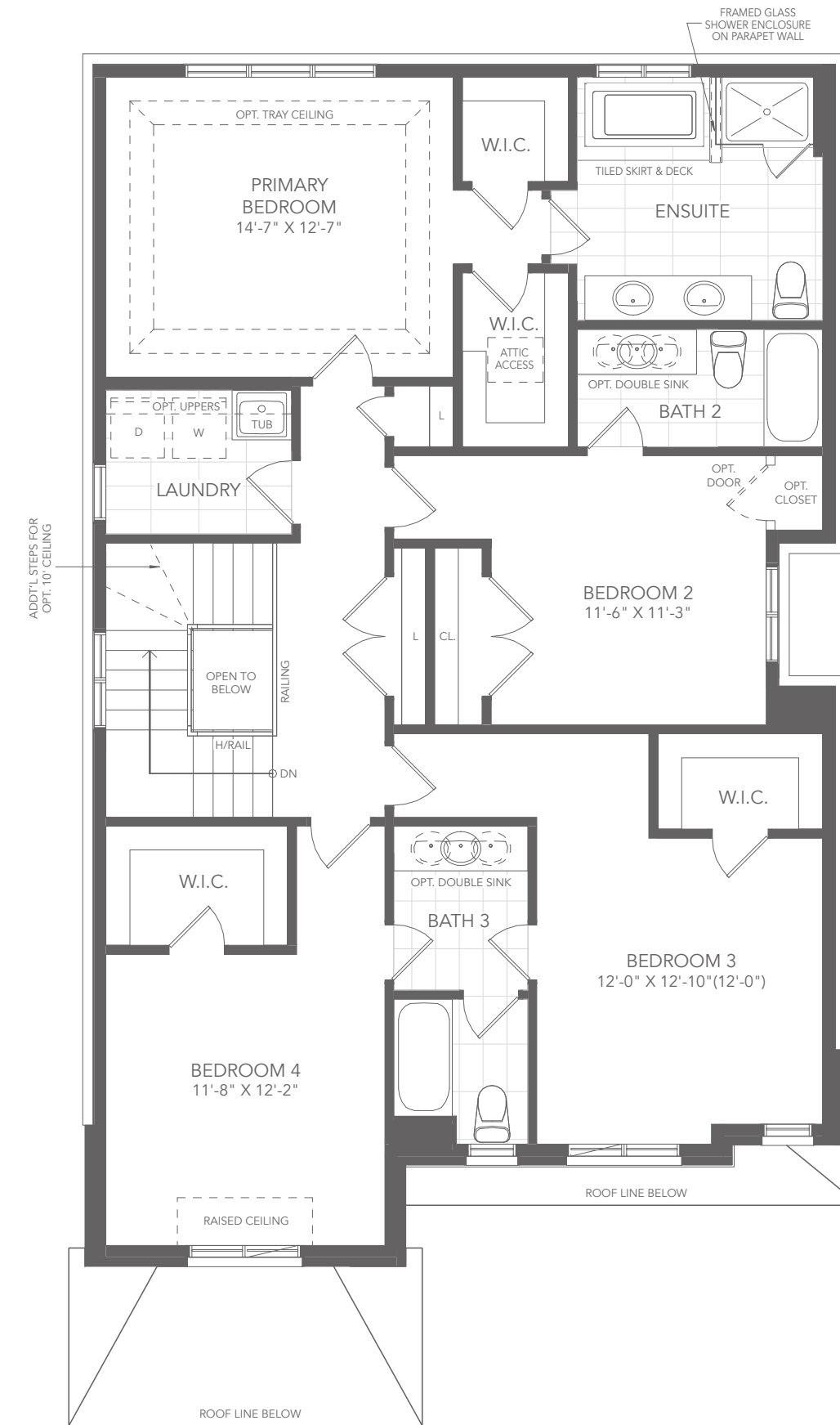
Elevation B - 2,615 sq. ft.

Elevation C - 2,610 sq. ft.

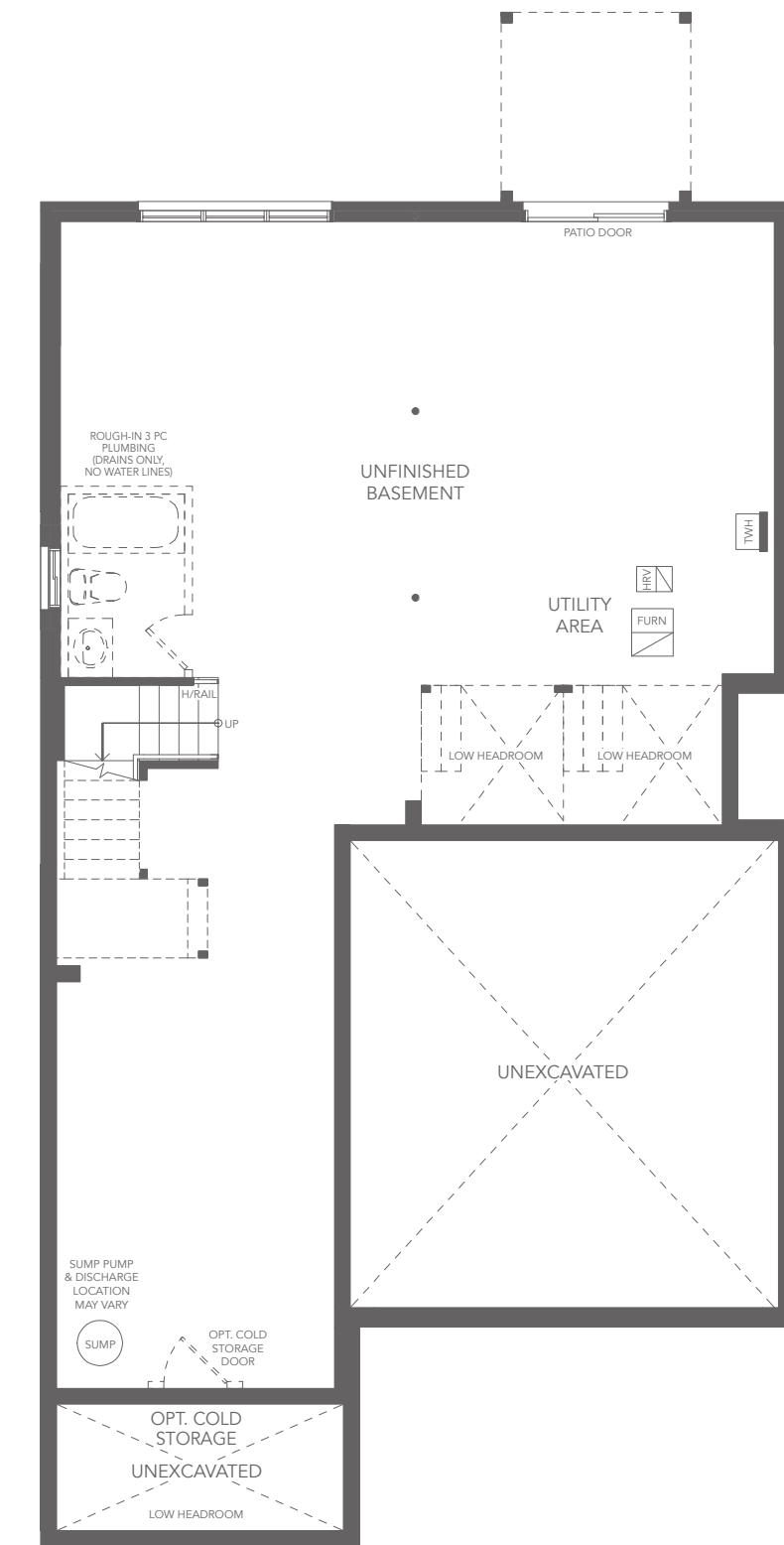
BA38-12



GROUND FLOOR PLAN B



SECOND FLOOR PLAN B



BASEMENT PLAN B

38' singles