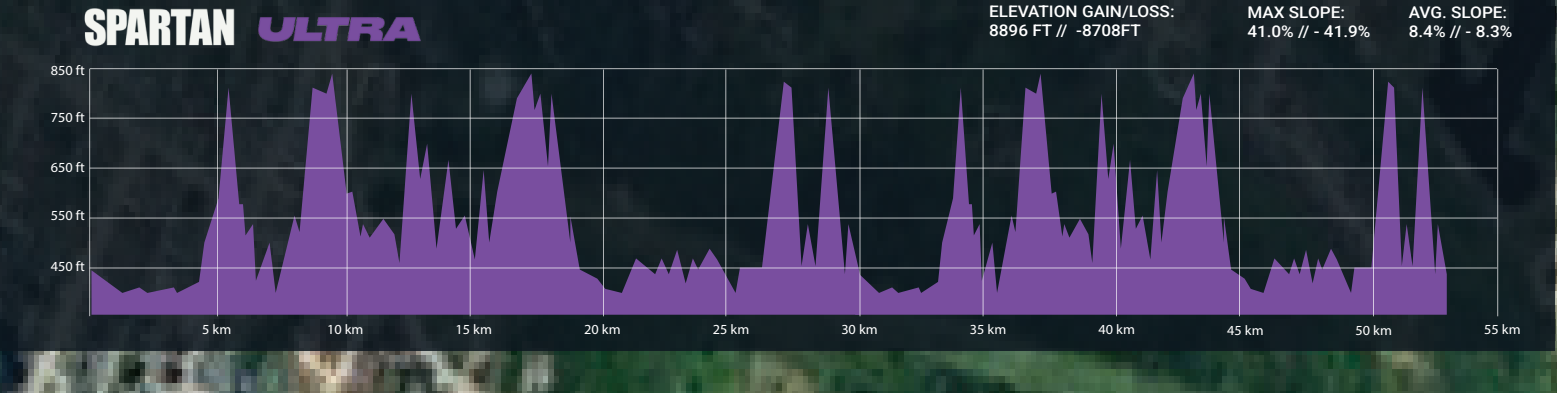
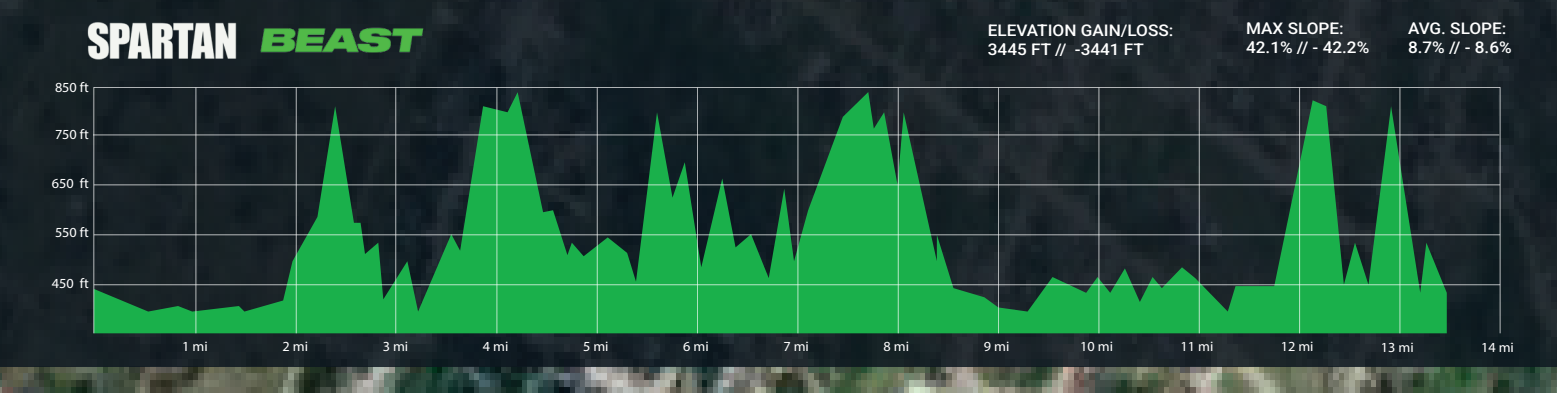
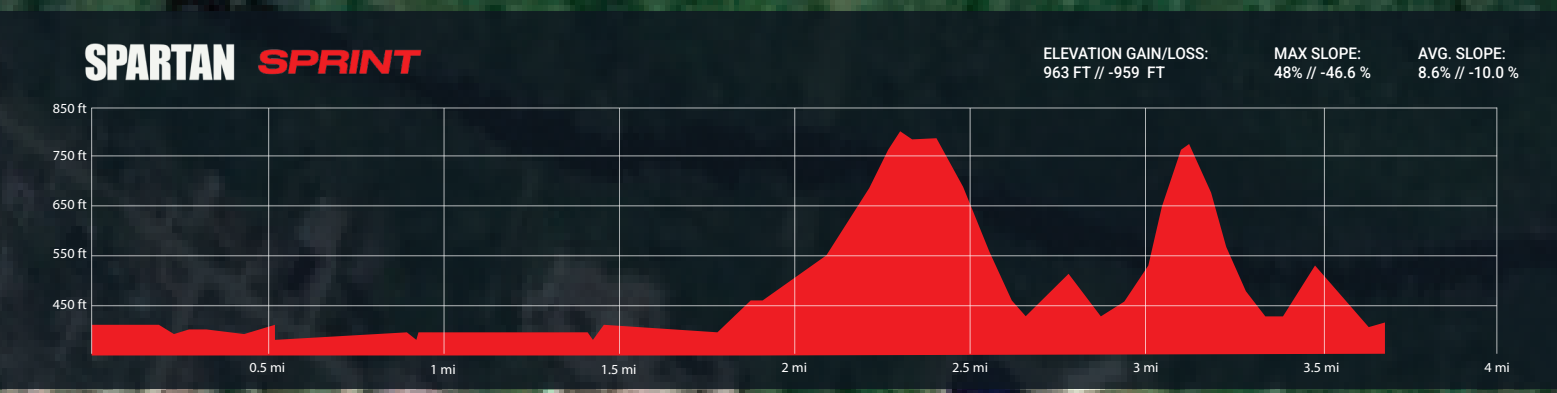




**KEY**

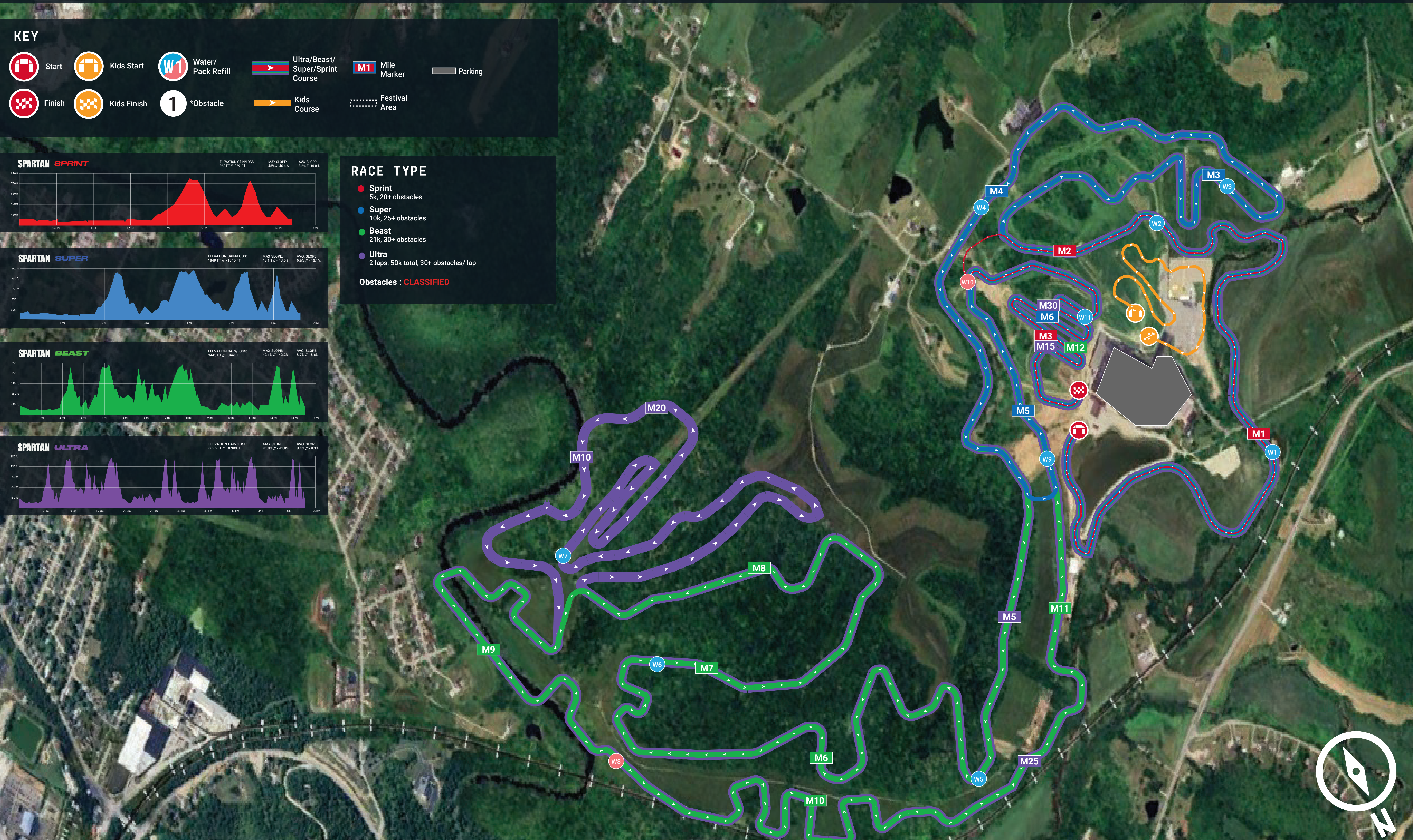
- Start
- Kids Start
- Water/Pack Refill
- Ultra/Beast/Super/Sprint Course
- Mile Marker
- Parking
- Finish
- Kids Finish
- \*Obstacle
- Kids Course
- Festival Area



**RACE TYPE**

- **Sprint**  
5k, 20+ obstacles
- **Super**  
10k, 25+ obstacles
- **Beast**  
21k, 30+ obstacles
- **Ultra**  
2 laps, 50k total, 30+ obstacles/ lap

Obstacles : **CLASSIFIED**



Due to the nature of our events this map is subject to change. Detailed maps can be found on the event webpage or onsite at the information tent where applicable.  
 \*Please note obstacles are separated into two categories, Mandatory Obstacles and Pass/Fail Obstacles. Pass/Fail Obstacles consist of single attempt and multiple attempt obstacles. The penalty for Competitive racers (red headbands) on ALL pass/fail obstacles is a penalty loop. The penalty for Open heat racers (black headbands) will be EITHER a penalty loop OR 30 burpees; course signage will indicate which penalty to expect. The Rules of Competition can be found on the Spartan website.