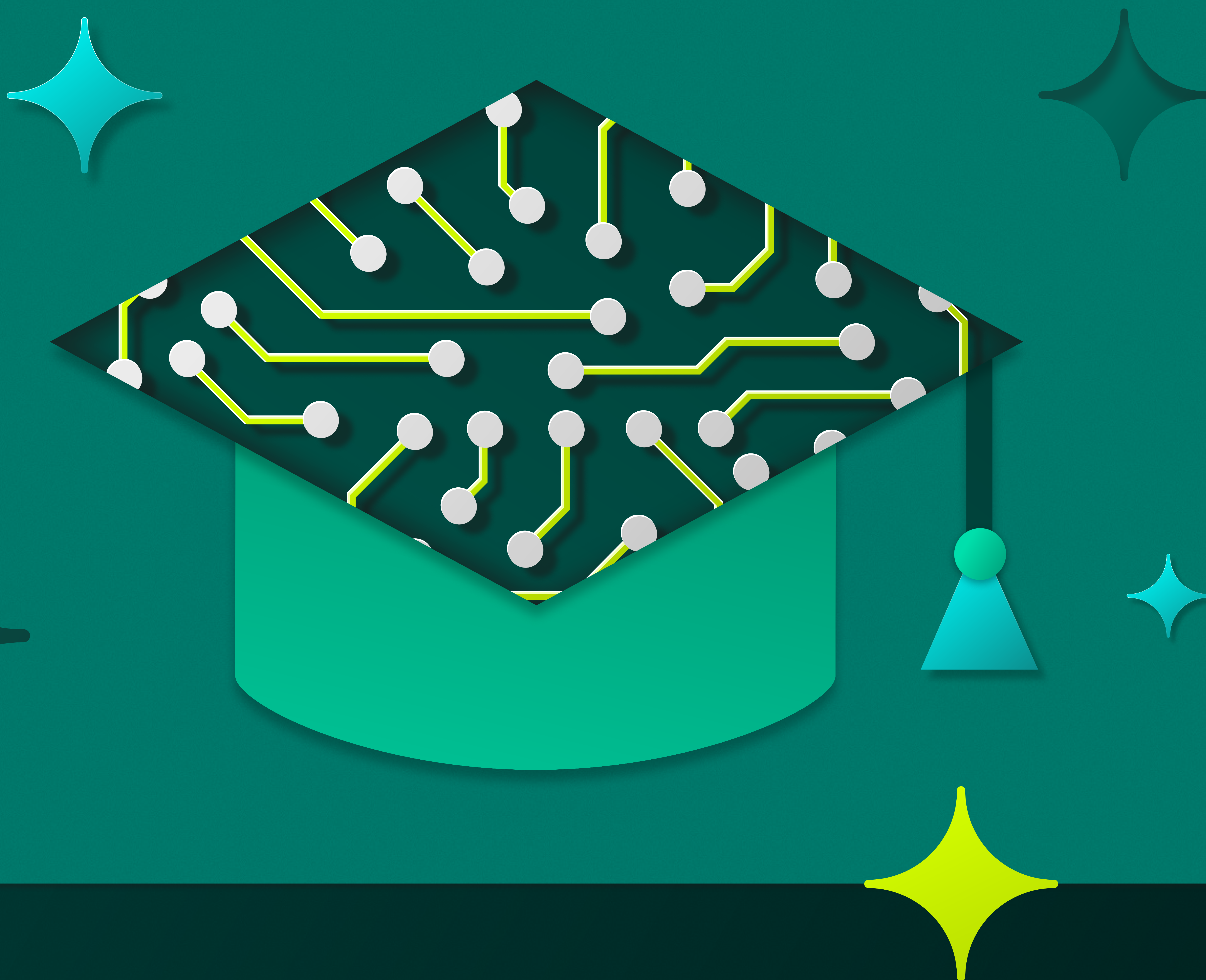




Grammarly for Education



Responsible AI in Higher Education: A Prioritization Guide

Introduction

Operationalizing Responsible AI in Higher Education

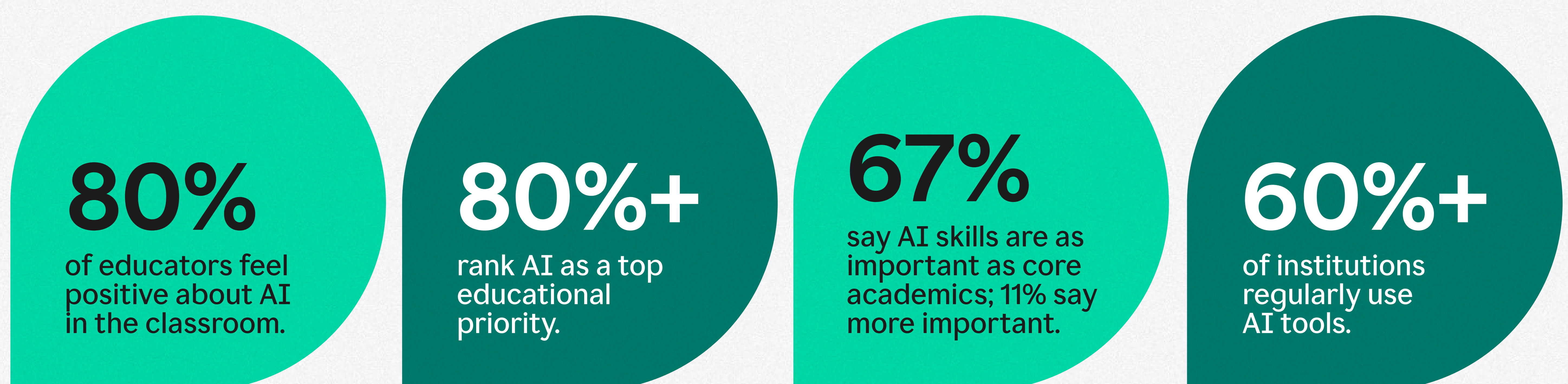
Artificial intelligence has been transforming higher education for years, but we now stand at a pivotal moment where its rapid evolution demands immediate focus on responsible innovation.

Institutions are embracing AI, recognizing its potential to enhance learning, and equipping students with AI skills essential for the future of work.

How to use this guide

After surveying higher ed leaders in partnership with Higher Ed Dive, Grammarly uncovered a common lack of clarity on responsible AI requirements, roles and responsibilities, and action steps. This asset provides guidance on how to understand responsible AI in higher education, who to involve, and key priority steps.

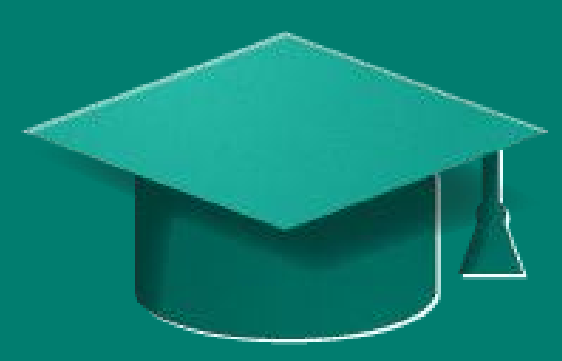
What higher ed says about AI today:



[Discover how to bridge the gap](#)

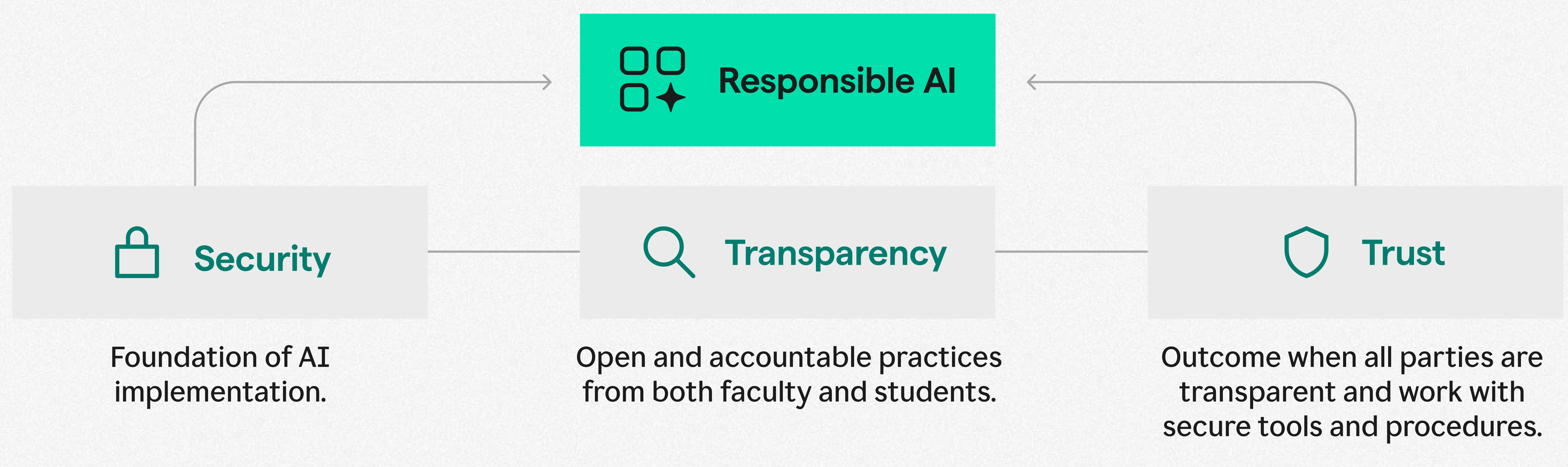
Next: The Responsible AI framework →



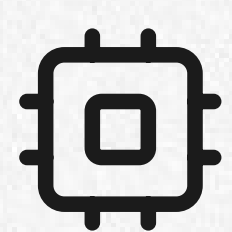


The Responsible AI Framework for Higher Education

A Clear Pathway to Practical AI Adoption in Higher Education

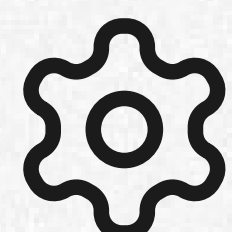


Key Stakeholders



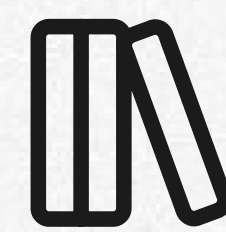
IT Professionals

Ensure technical safety.



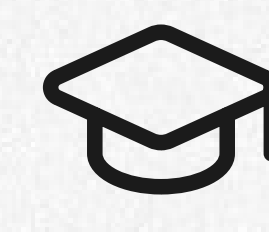
Administrators

Guide institutional policies.



Educators

Integrate AI into teaching and learning.



Students

Develop future-ready skills.

The Responsible AI (RAI) framework provides actionable steps to help your institution effectively integrate responsible AI practices.



Assess Your Current AI Practices

Understand how your existing initiatives align with the RAI framework.



Identify Gaps and Define Next Steps

Pinpoint areas for improvement to develop a comprehensive RAI approach.



Engage Stakeholders for Shared Responsibility

Determine who should be involved at each stage to create an institution-wide approach.

[Explore each component in depth](#)

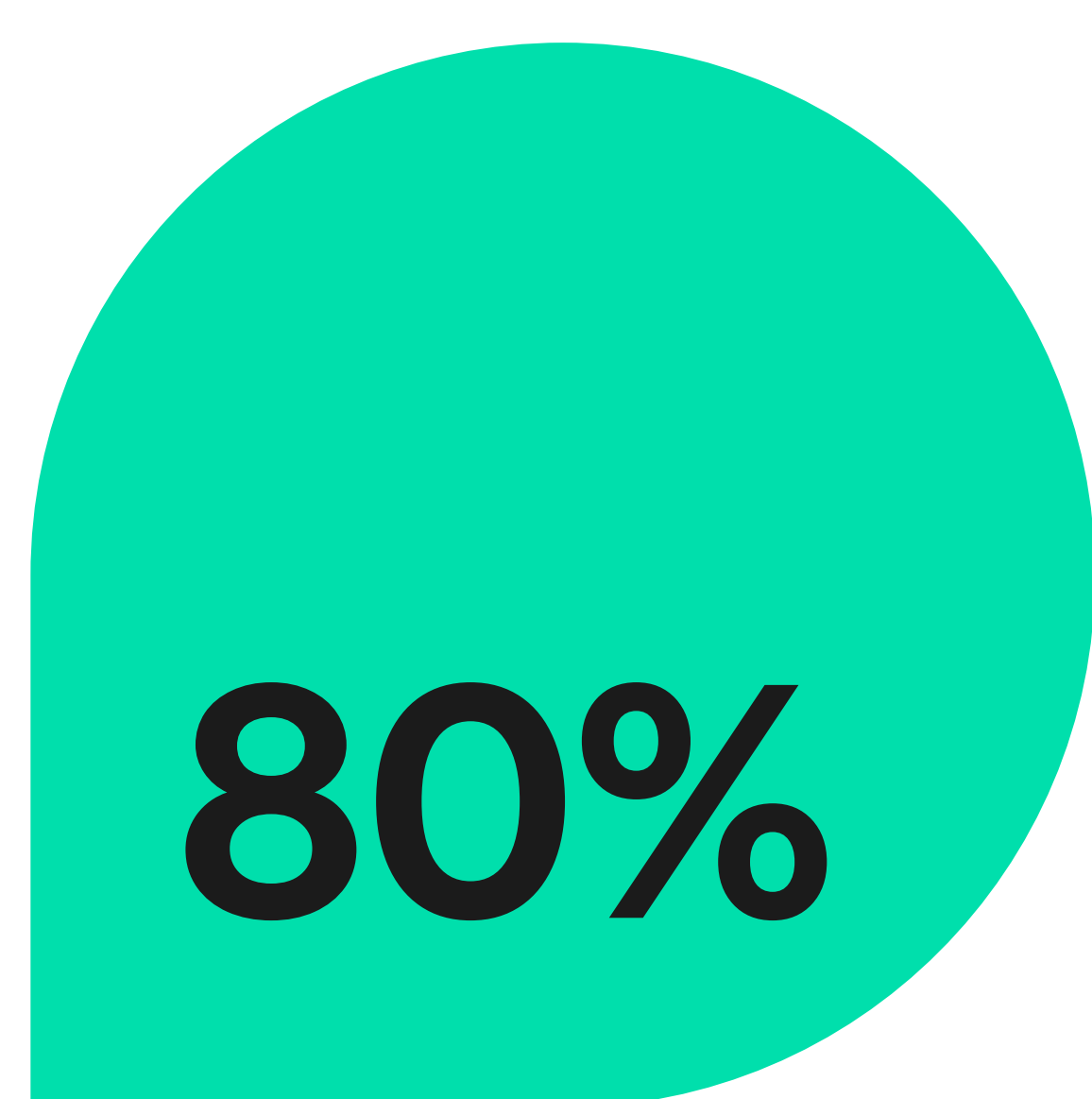
Next: Security →



Security—The Foundation of Responsible AI

Core components: Technical Safety & Reliability | Data Security & Privacy Protection

Ensure technical safety and privacy in AI implementation



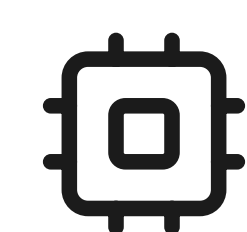
of higher ed leaders identify student data privacy and security as extremely important

Key Stakeholders



CTO/CIO

Guide secure AI adoption and innovation as a strategic leader.



IT Professionals

Ensure system safety and data protection as technical experts.

Technical Safety & Reliability

[See Grammarly's self-assessment](#)



Evaluate Your AI Tools

[Assess AI tools for security and reliability](#) before implementation.



Implement Timely Updates

Keep systems up-to-date to protect against threats.



Conduct Regular System Audits

Identify vulnerabilities and ensure system integrity.



Monitor Performance Continuously

Ensure optimal functioning of AI systems.

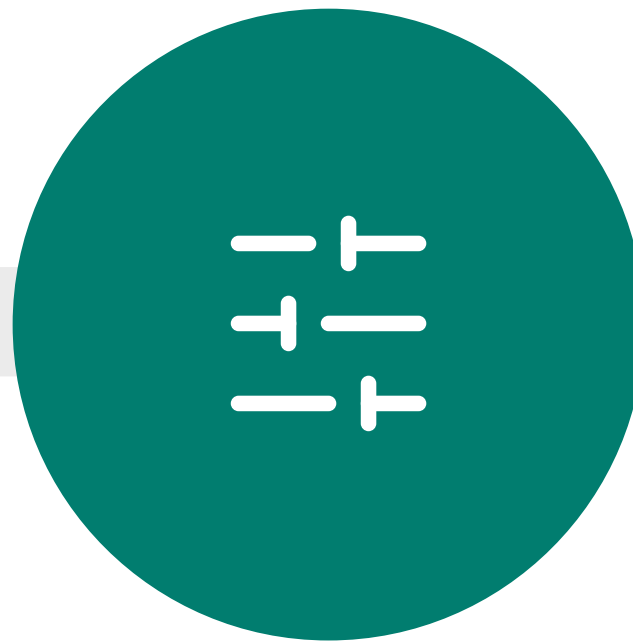
Data Security & Privacy Protection



Practice 1:
Ensure Regulatory Compliance
Adhere to laws like FERPA and GDPR.



Practice 2:
Use Advanced Encryption
Protect data both at rest and in transit.



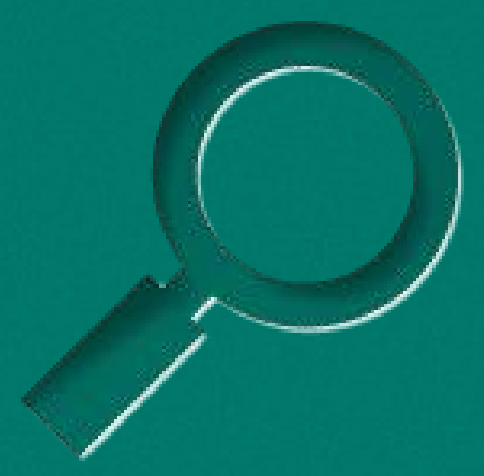
Practice 3:
Implement Access Controls
Configure custom permissions and group-level access.



[Secure foundations support AI safety at scale](#)

Next: Transparency →



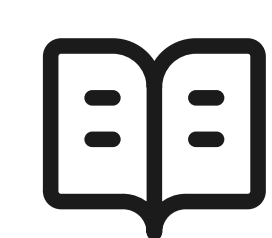


Transparency—Responsible Implementation

Core components: Bias Mitigation & Equitable Access | Transparency & Accountability

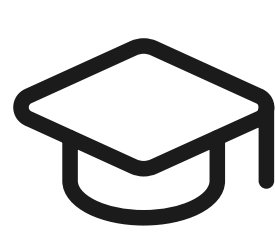
Foster equitable outcomes through transparent and accountable AI use

Key Stakeholders



Provost

Oversees academic policies and promotes institutional transparency.



Academic Affairs

Designs and coordinates transparent practices to ensure academic integrity and fairness.

Bias Mitigation & Equitable Access

Priorities for Transparency

Percent of higher ed leaders surveyed who feel it is important to:

Give all students equitable access to AI tools

75%

Complement human educators rather than replace them

71%

Promote fairness and eliminate bias

68%



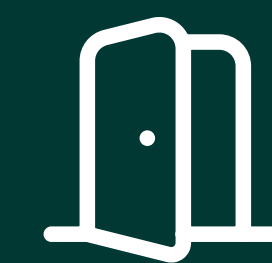
Conduct Regular Bias Assessments

Identify and address biases in AI systems.



Adopt Inclusive-Forward AI Tools

Deploy AI tools that serve all user groups.



Ensure Equitable Access

Provide AI resources and literacy opportunities to all students equally.

Transparency & Accountability

74%

of higher education leaders identify transparency about AI use in decision-making processes as extremely important



Action 1:

Create Transparent and Living Policies

Maintain dynamic AI policies that evolve with technology.



Action 2:

Clarify Academic Integrity Expectations

Define and publicize ethical AI use to help students avoid unintentional misconduct.



Action 3:

Establish Policy Steering Committee

Regularly update policies through active committees.

[Transparency fosters trust and collaboration](#)

Next: Trust →

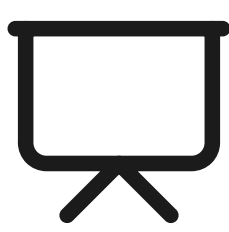


Trust—The Future of Higher Ed Innovation

Core components: Student Information & AI Literacy | Ethical & Effective Pedagogical Integration

Build confidence with ethical AI to enrich educational experiences

Key Stakeholders



Educators

Guide ethical AI integration in teaching.



Students

Prepare for the future workforce with AI skills.

Student Information & AI Literacy



Facilitate Open Dialogues on AI Use

Host listening tours for students, educators, and administrators to openly discuss AI.



Promote Development of Soft Skills

Enhance communication, collaboration, and adaptability skills alongside AI literacy.



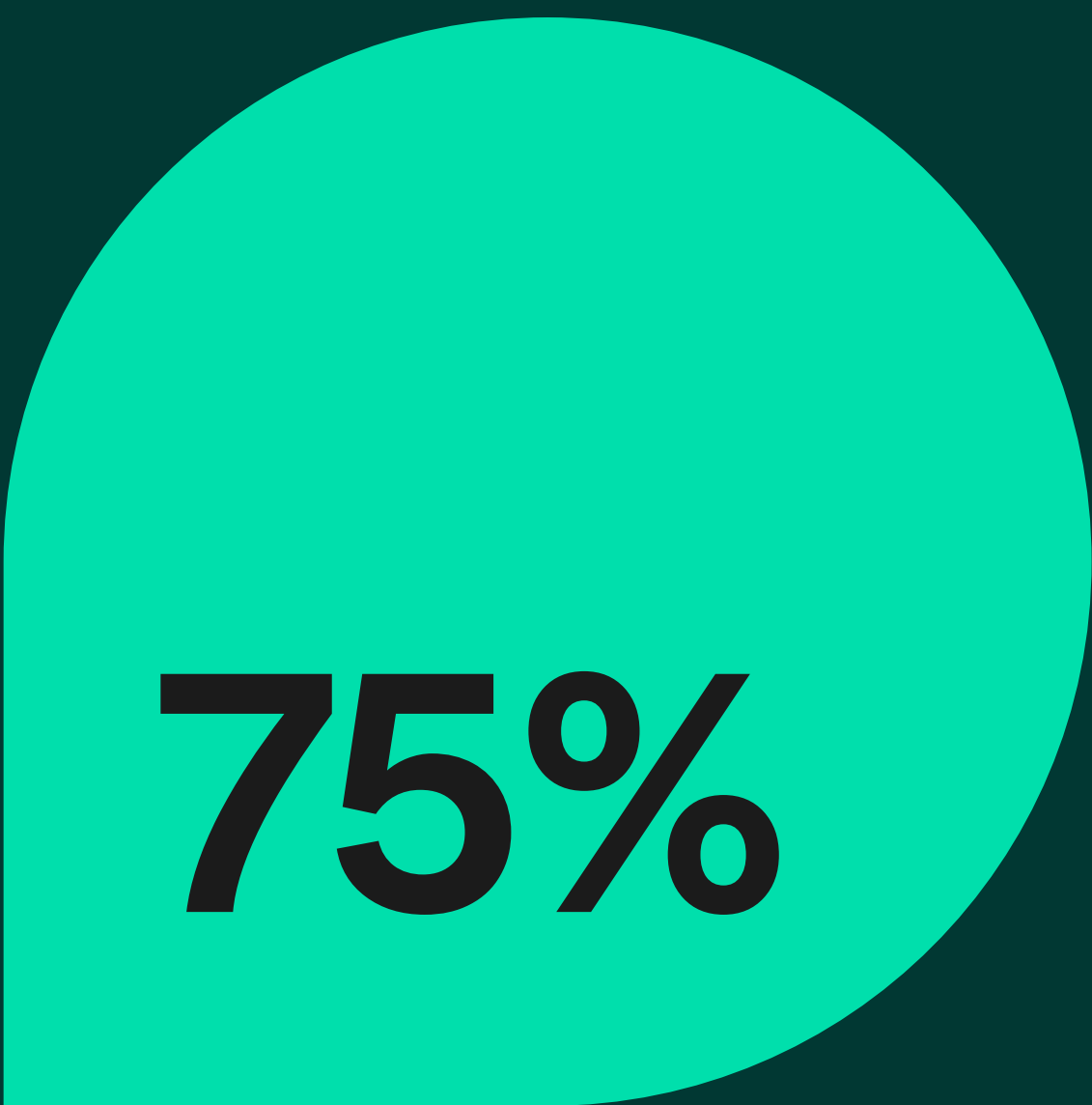
Provide Ongoing AI Resources

Regularly offer materials to deepen understanding of AI and its ethical implications.

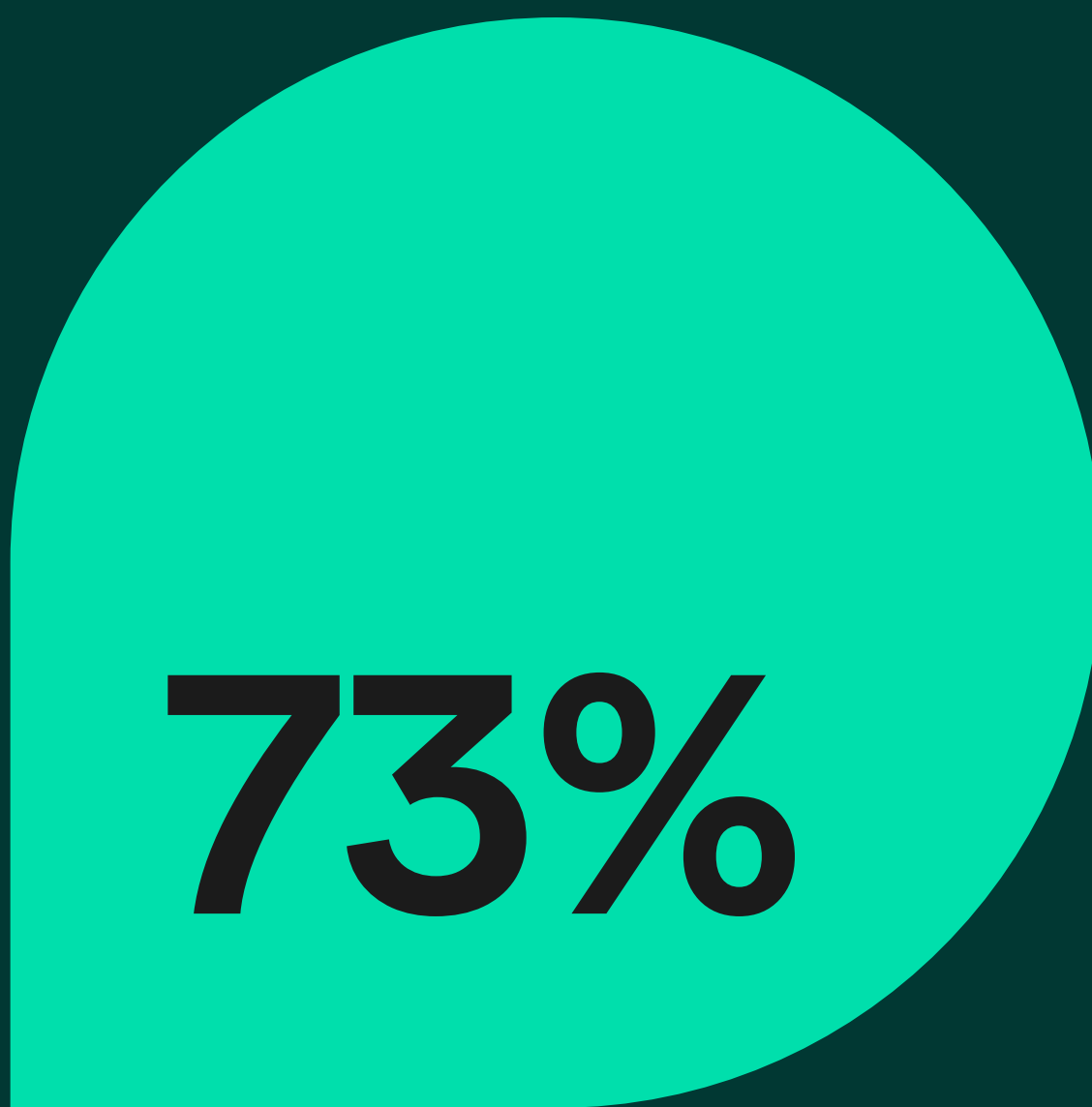
Ethical & Effective Pedagogical Integration

Priorities for Trust

Percent of higher ed leaders surveyed who feel it is important to:



Preserve academic integrity



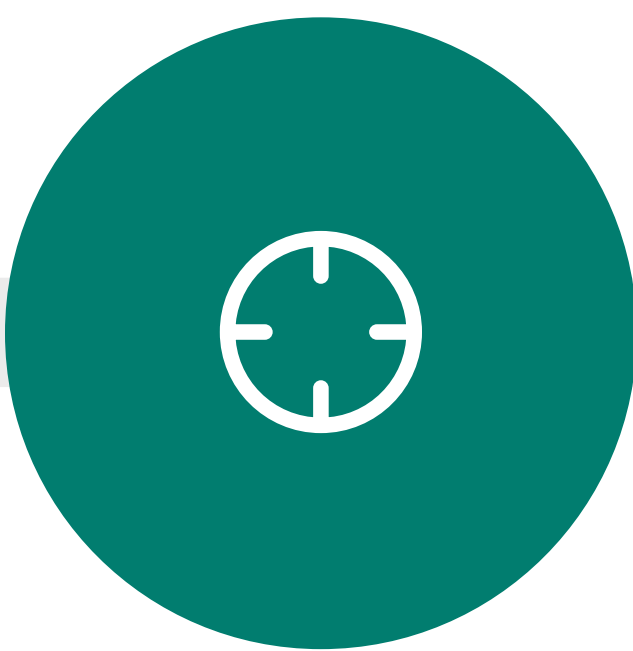
Align AI use with ethical standards and educational values



Action 1:

Integrate AI Topics into Curriculum

Incorporate AI education across disciplines.



Action 2:

Align AI Tools With Learning Objectives

Identify AI use cases that support educational goals.



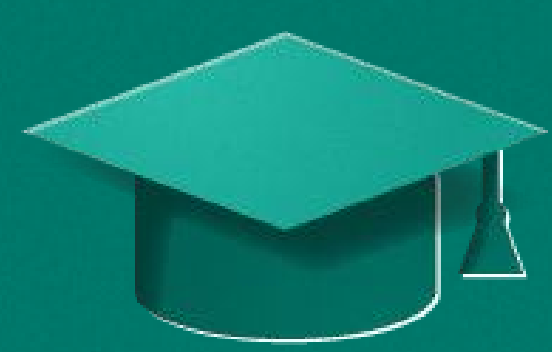
Action 3:

Monitor and Evaluate Impact

Assess AI’s effectiveness on student outcomes.

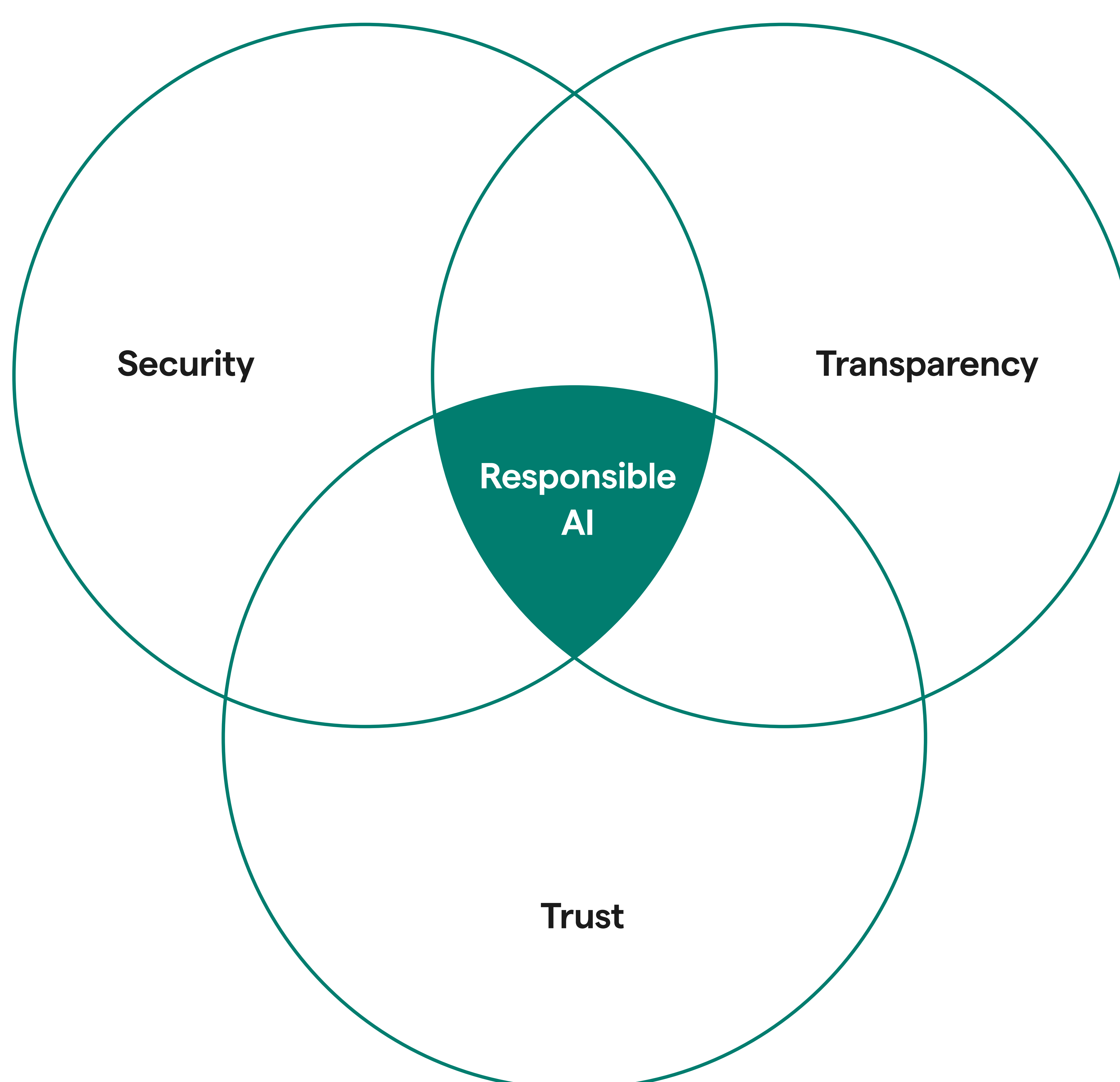
[Ready to build trust with responsible AI?](#)

Next: Conclusion →



Conclusion—The Journey Toward Responsible AI

**Integrate security, transparency, and trust to shape
the future of higher education**



**Responsible AI: the guardrails
to drive AI innovation**

[Download our latest report in collaboration with Higher Ed Dive:
“Navigating the AI Dilemma in Higher Ed: Insights From a National Survey”](#)

[Download](#)



About Grammarly

Grammarly for Education is an AI-powered communication assistant trusted by over 3,000 institutions to equip students with essential AI skills for the new era of work. It helps students learn as they write, enhancing their ability to communicate confidently and succeed in the classroom and beyond. For educators, Grammarly boosts productivity and makes teaching more efficient and meaningful. By offering writing suggestions that augment classroom instruction and improve student outcomes, Grammarly serves as the trusted generative AI partner for your entire institution.

Learn more by [getting in touch with our product experts.](#)