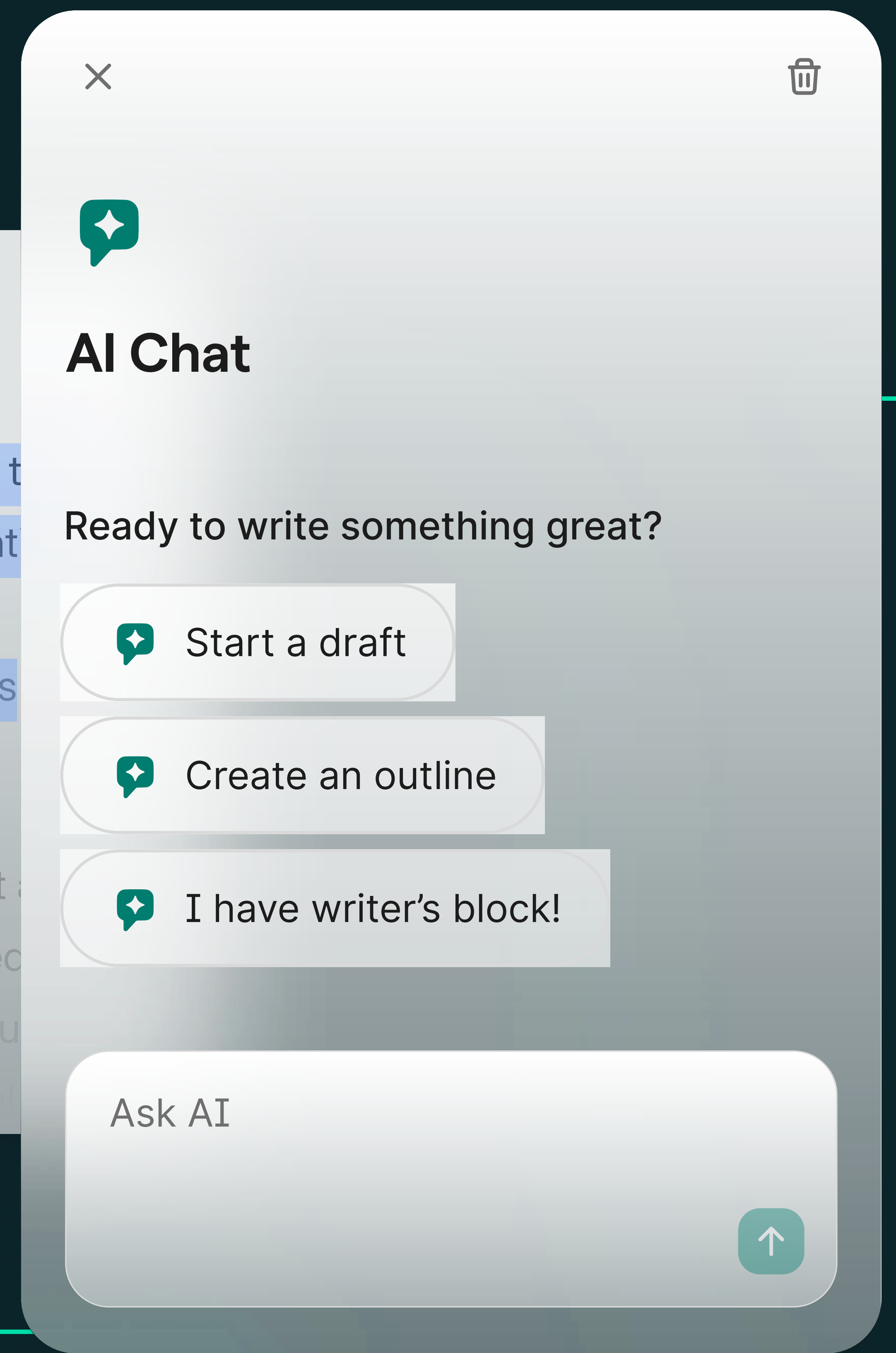
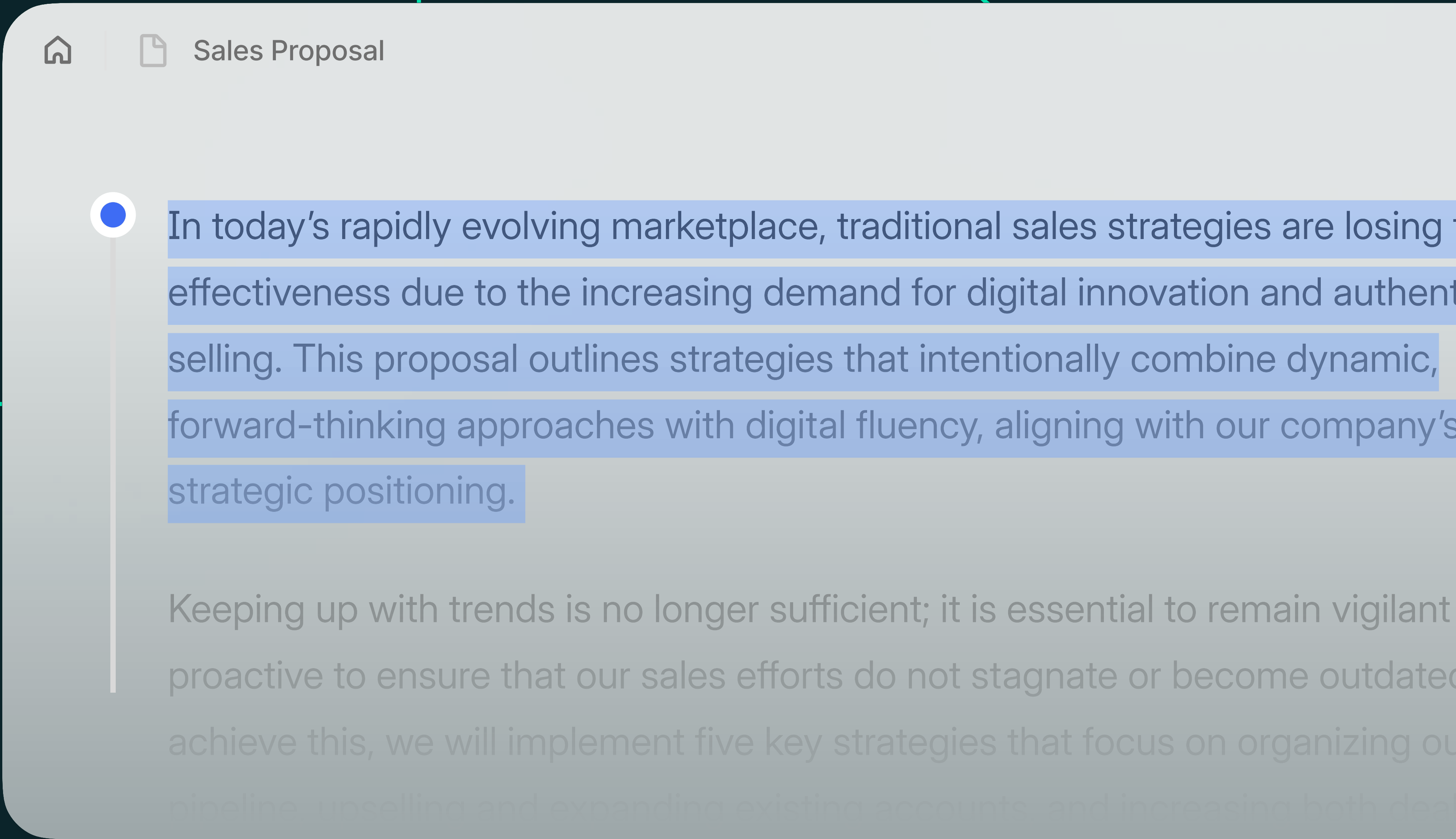




# Introducing docs: Your AI-powered writing surface

Docs is an AI-powered writing surface for creating communication that drives results.

From brainstorming to final polish, purpose-built AI agents help your team craft proposals, reports, and content with clarity and impact, all on a single seamless surface.



## All-in-one document editor

Docs combines a powerful editor with AI agents that support you at every stage of your writing process to write clearly, confidently, and efficiently. Get the help you need, exactly when you need it, all in one place.



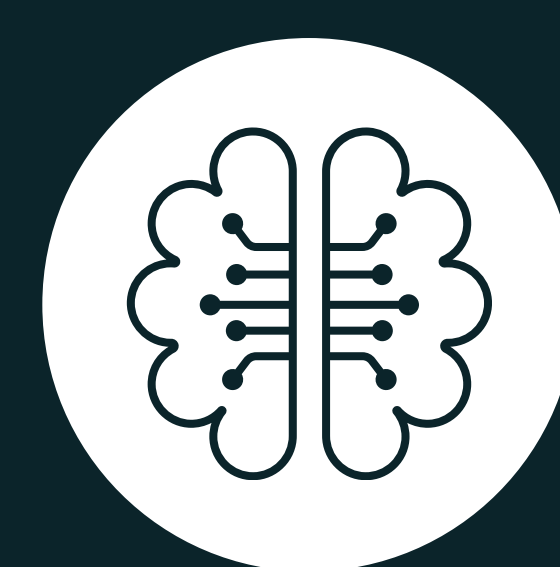
## AI that amplifies your voice

Our agents don't replace your thinking. They enhance it by sharpening arguments, refining tone, and anticipating audience reactions while maintaining your authentic voice and expertise.



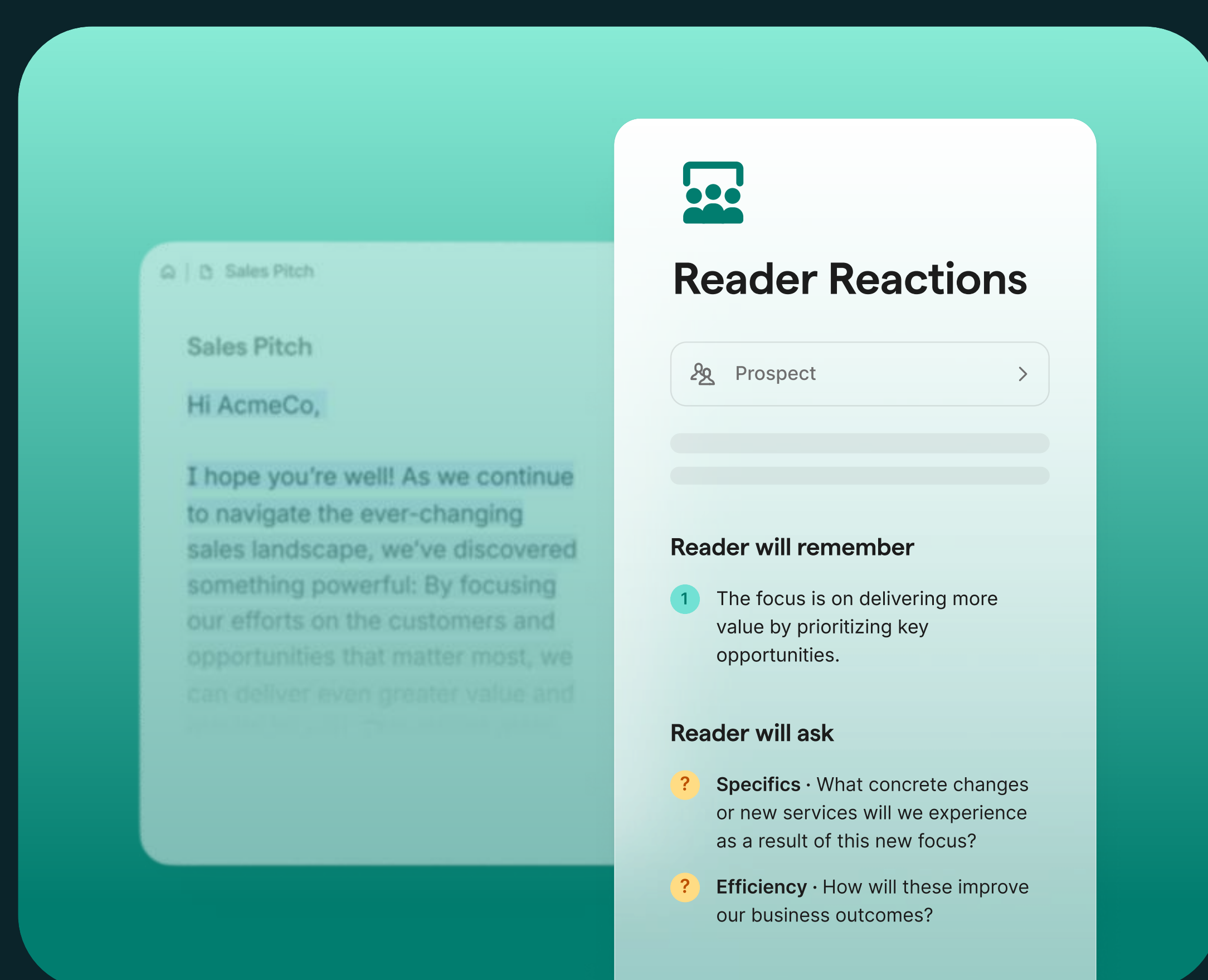
## Write with credibility and confidence

Get intelligent feedback and revision support that elevates your work without losing what makes it yours. Our AI agents help you build stronger communication skills while delivering polished results.



## Context-aware assistance

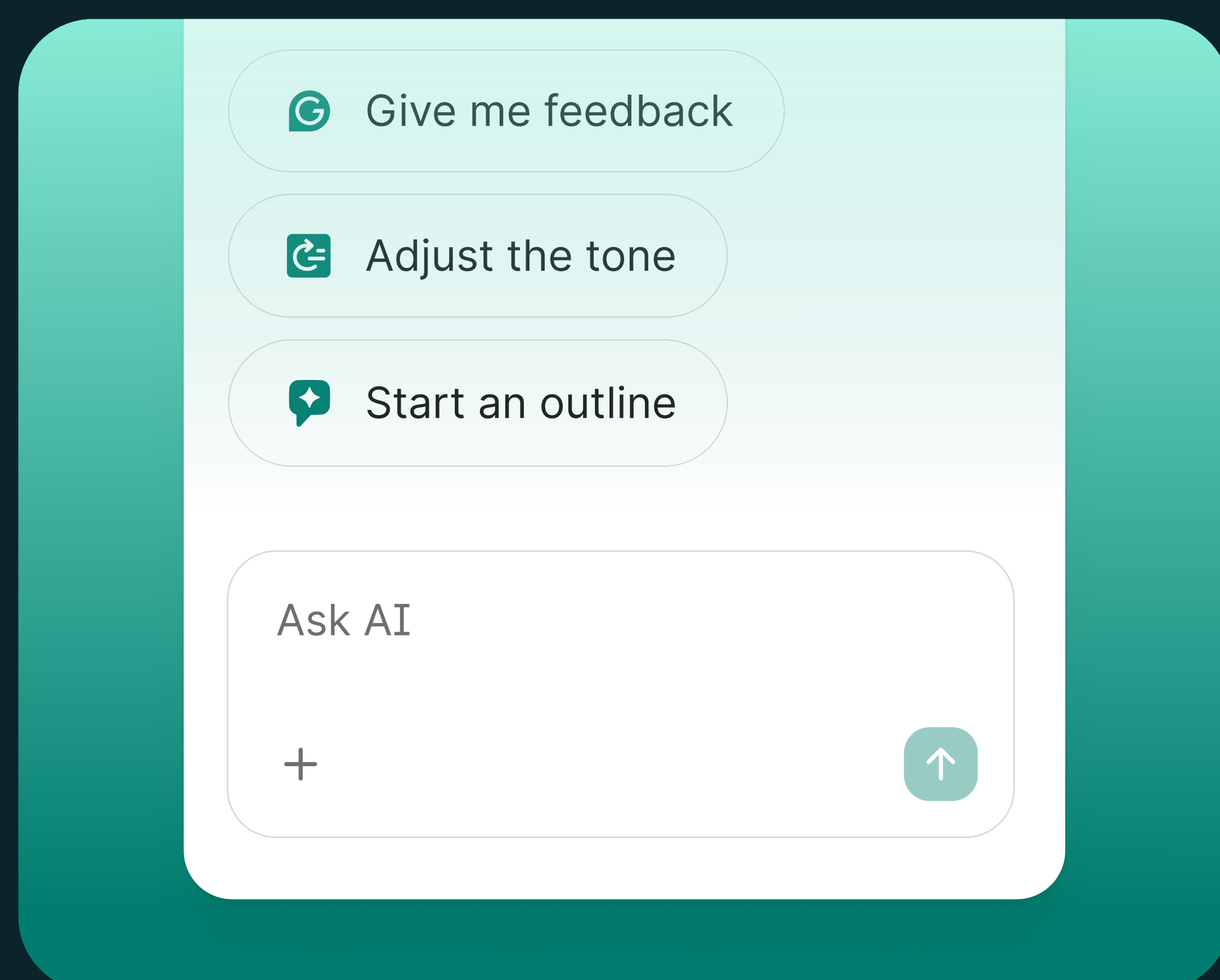
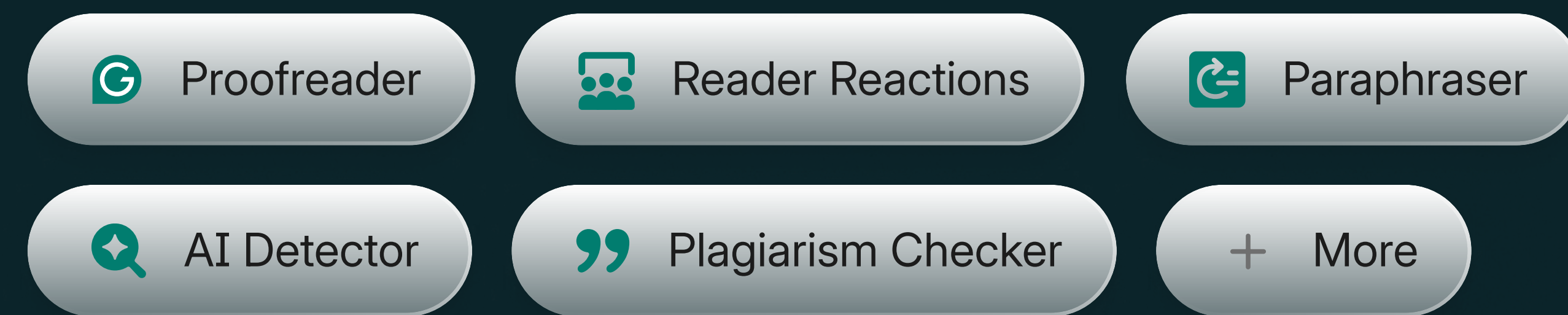
Agents adapt to your writing in real time, offering relevant feedback that evolves as your ideas develop. Strengthen clarity, hit your goals, and finish with confidence every time.



## AI agents in one powerful surface

Tackle any writing challenge with purpose-built agents for proofreading, audience reactions, tone adjustment, and more. Get instant help without leaving your document.

### Featured agents:



## Brainstorm and generate ideas with AI Chat

AI Chat brings conversational AI directly into your document. Ask questions, conduct research, generate ideas, or refine messaging without switching tools. Get instant support for any phase of your writing process.

## How to get started

- Admins should enable these four settings on the [Feature Access](#) page: **Grammarly Editor**, **Docs with agents**, **AI assistant**, and **Paragraph-level rewrites**.
- Once enabled, all agents are on by default. Admins can customize agent access at any time on the [Agent Access](#) page.
- Docs are accessed at [app.grammarly.com](http://app.grammarly.com)

