

STRIDELIVING.CA

STRIDE ON UNION

UNION

BROUGHT TO YOU BY

 ZEHR

Leading REAL ESTATE COMPANIES IN THE WEST
TRILLIUMWEST

WE'RE LOCAL
WE'RE GLOBAL

Upscale living

tailored to

your lifestyle

**Our STRIDE
Promise**

We care about the community inside our buildings just as much as the carefully selected neighbourhoods in which it chooses to build.

Confident Living is a unique lifestyle and promise STRIDE makes to each of its tenants.



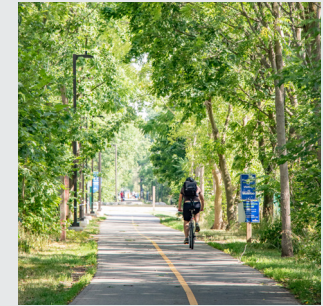
24
UNION

STRIDLIVING.CA



Mary Allen Park
95 Allen Street East



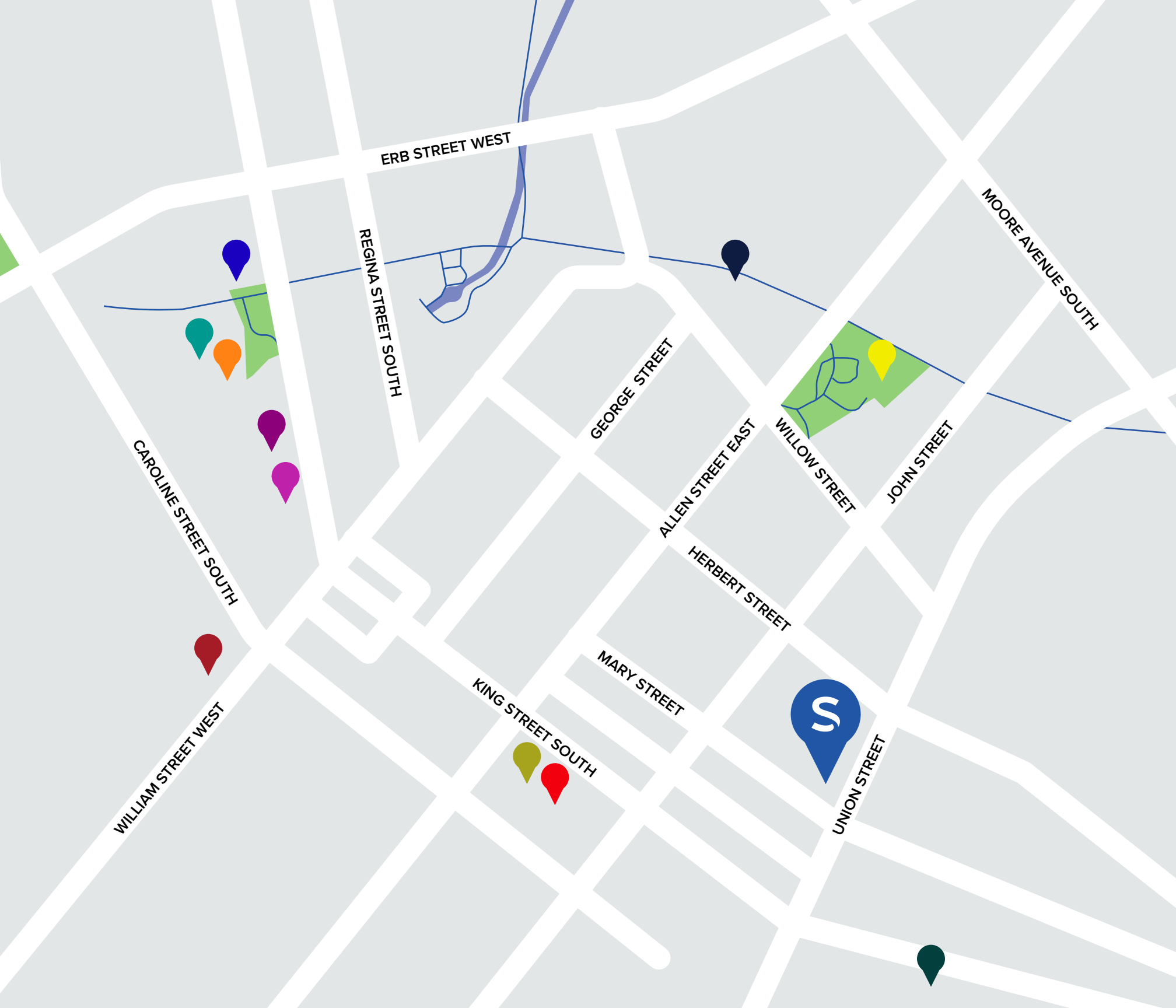


Located centrally in Uptown Waterloo - this is the perfect location for individuals who want to be in the center of the action with everything right at their fingertips.

Uptown, Belmont, Downtown

Shopping, transit, restaurants are all conveniently located for those who don't have or need a car. Uptown Waterloo, Belmont Village and even Downtown Kitchener can be conveniently accessed by foot or bike. Want to explore a bit further?

Easy. Just hop on the ION light rail transit - which is only steps from 24 Union.



ERB STREET WEST

REGINA STREET SOUTH

MOORE AVENUE SOUTH

GEORGE STREET

ALLEN STREET EAST

WILLOW STREET

JOHN STREET

CAROLINE STREET SOUTH

HERBERT STREET

WILLIAM STREET WEST

MARY STREET

KING STREET SOUTH



UNION STREET



Grocery shopping at Vincenzo's. Brunch at Bauer. Walkable to Waterloo Square. Play some outdoor ping-pong or enjoy the community rink at Mary-Allen.

If you're feeling physical, take the Spurline trail or relax on the ION to get to uptown or downtown. Swing by the LCBO for your Friday night soiree.

Both inside and outside, the convenience of living at Stride stands out as second-to-none.

 Mary Allen Park

 Vincenzo's

 Bauer Kitchen

 Spur Line Trail

 Red House Dining

 LCBO

 Starbucks

 Waterloo Square

 Beertown

 ION Stop

 Grand River Hospital





Fitness Room

Welcome to a state-of-the-art fitness room located in the heart of your condo building. Our fitness room offers everything you need to achieve your health and fitness goals, all conveniently located just down a hallway from your front door.

With top-of-the-line cardio and strength training equipment, including:

- Treadmills, ellipticals, stationary bikes, and weight machines
- Open space for stretching and yoga, with mats and blocks available

With large windows letting in natural light and a peaceful ambiance, you'll feel relaxed and refreshed as you work on your wellness journey.

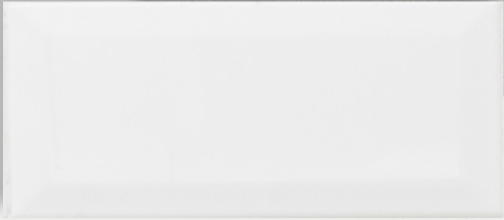
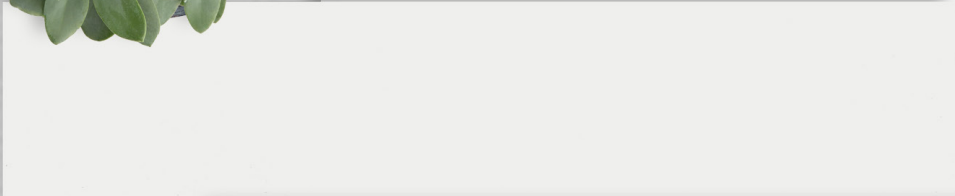
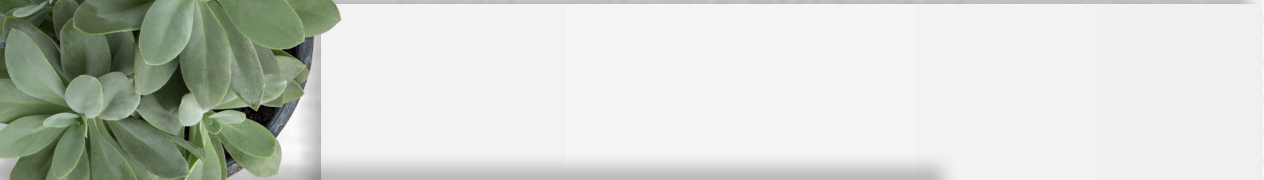




EV Parking

An eco-friendly condo building that offers the convenience of electric vehicle (EV) parking spots. Our commitment to sustainability and reducing our carbon footprint is reflected in our offering of EV parking spots, making it easier and more convenient for our residents to make the switch to electric vehicles.

Our EV parking spots are conveniently located near the entrance and exit of the building, so you can easily and quickly access your vehicle. Plus, our building offers 24/7 security and surveillance, giving you peace of mind that your vehicle is safe and secure.





Luxury rentals that offer the ultimate in modern convenience. Designed with the highest attention to detail and featuring premium finishes.

Well thought-out floor plans feature an open concept design that maximizes space and creates a seamless flow throughout the unit. The kitchen is a chef's dream, with top-of-the-line stainless steel appliances, sleek modern cabinetry, and ample storage space.

The bathrooms are equally impressive, with high-end fixtures and finishes that create a spa-like experience. The quartz countertops and modern lighting fixtures add a touch of sophistication and style to the space.

Experience the ultimate in luxury living and make one of our high-end rental condos your new home. If you haven't already, contact us today to schedule a viewing.

UNION

SUITE 1A
FLOORS 1 - 6

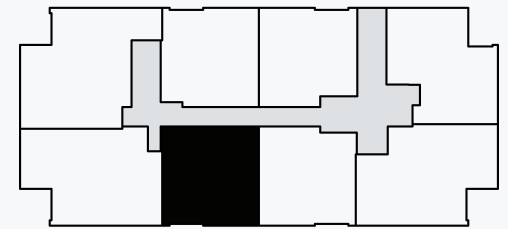
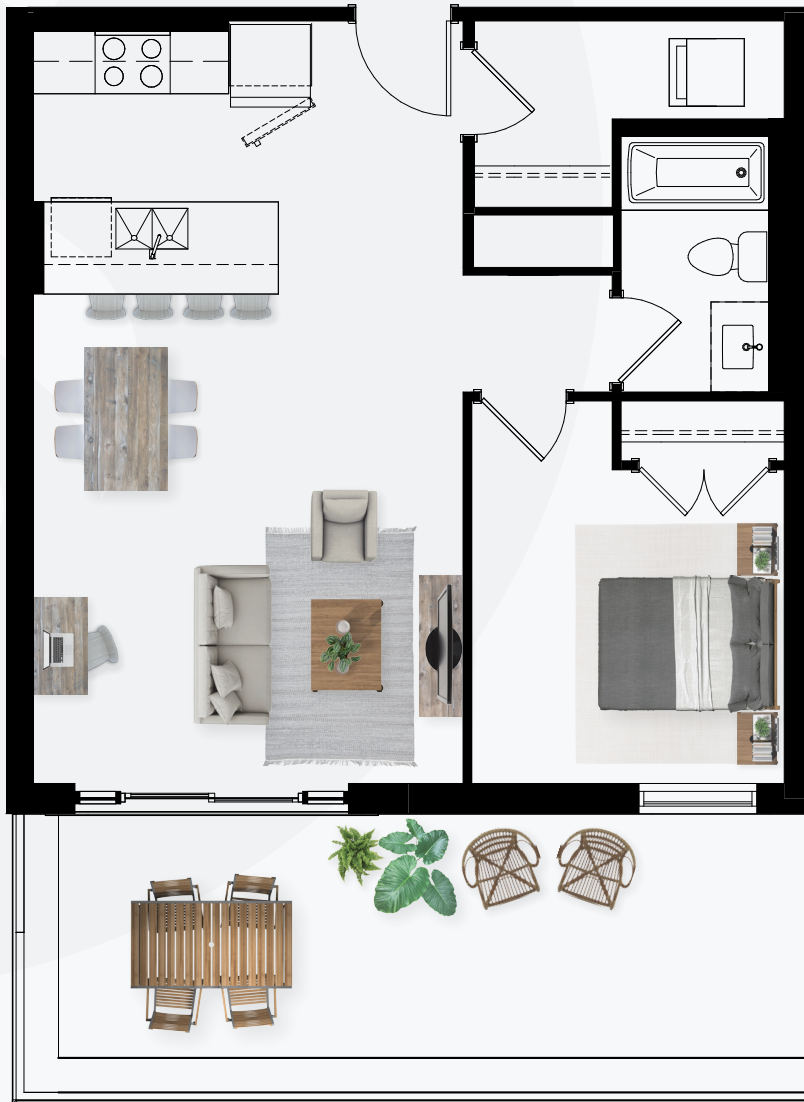
1 BEDROOM
1 BATHROOM

INDOOR LIVING
706 SQFT

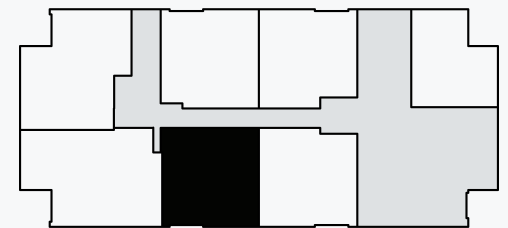
JULIET
BALCONY FLOORS 2-6

PATIO FLOOR 1
257 SQFT

(SHOWN)



FLOORS 2 - 6



FLOOR 1

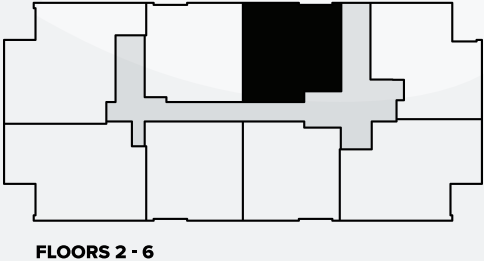
WILLIAM

SUITE 1B
FLOORS 1 - 6

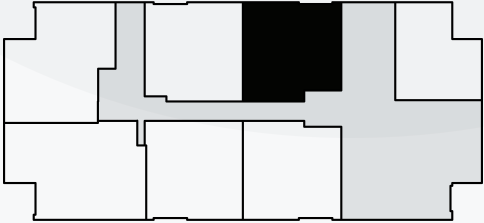
1 BEDROOM
1 BATHROOM

INDOOR LIVING
689 SQFT

JULIET
BALCONY FLOORS 1-6



FLOORS 2 - 6



FLOOR 1

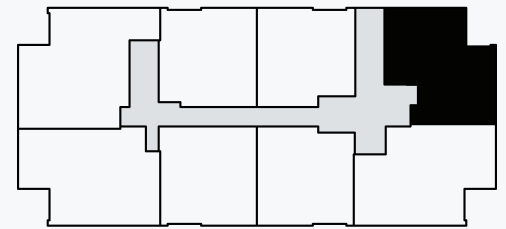
JOHN

SUITE 1C
FLOORS 2 - 6

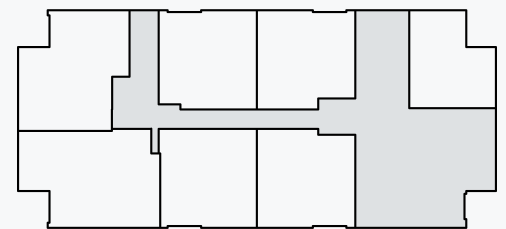
1 BEDROOM
1 BATHROOM

INDOOR LIVING
786 SQFT

BALCONY FLOORS 2-6
80 SQFT



FLOORS 2 - 6



FLOOR 1

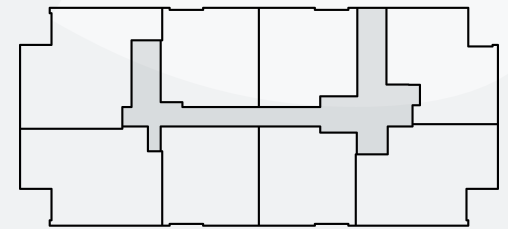
HERBERT

SUITE 1D
FLOOR 1

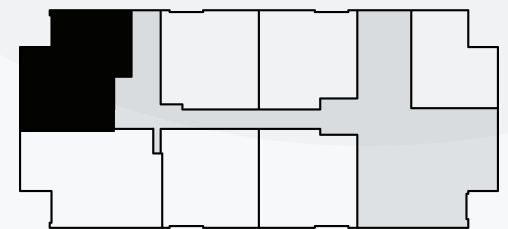
1 BEDROOM
1 BATHROOM

INDOOR LIVING
841 SQFT

BALCONY FLOOR 1
80 SQFT



FLOORS 2 - 6



FLOOR 1

WILLOW

SUITE 1E
FLOORS 1 - 6

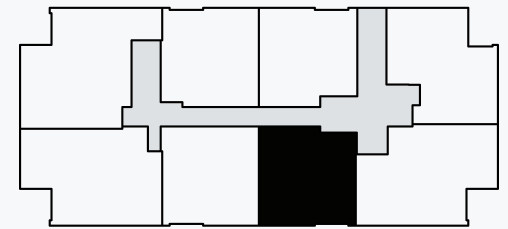
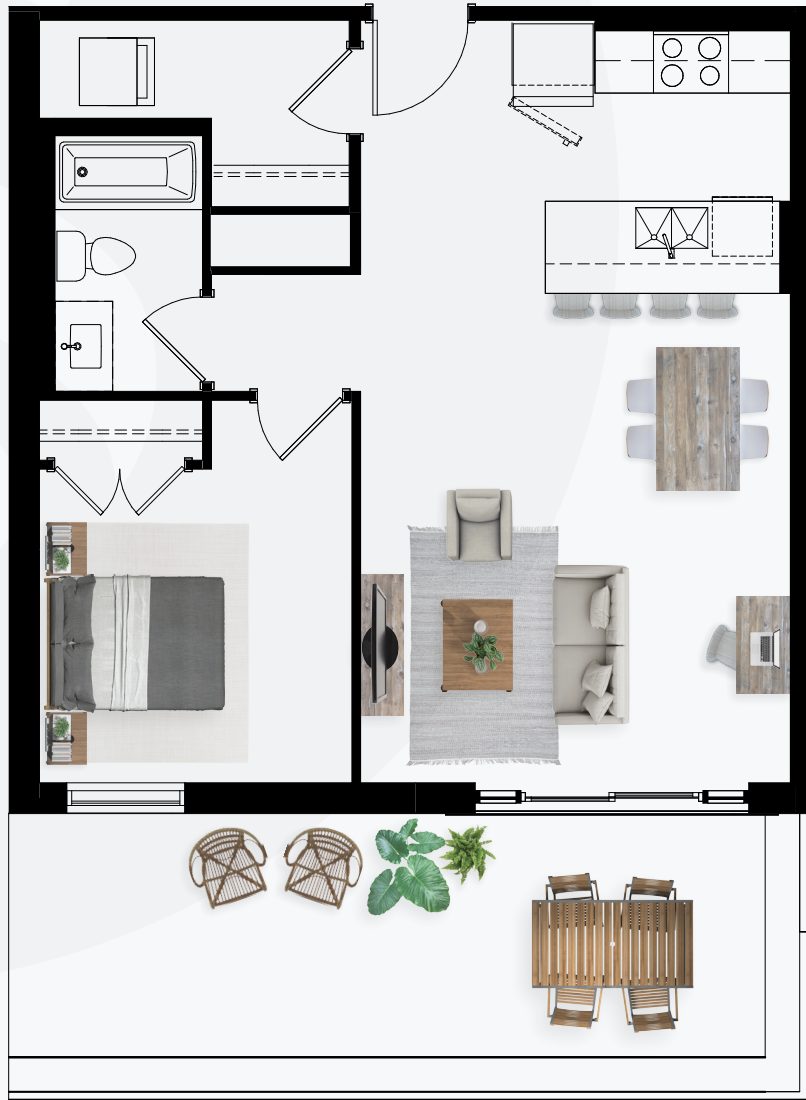
1 BEDROOM
1 BATHROOM

INDOOR LIVING
692 SQFT

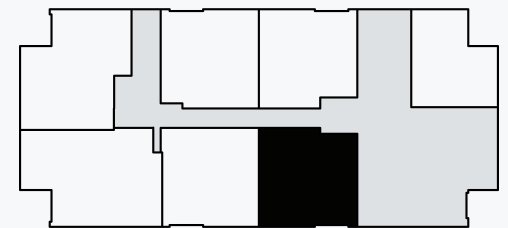
JULIET
BALCONY FLOORS 2-6

PATIO FLOOR 1
257 SQFT

(SHOWN)



FLOORS 2 - 6



FLOOR 1

GEORGE

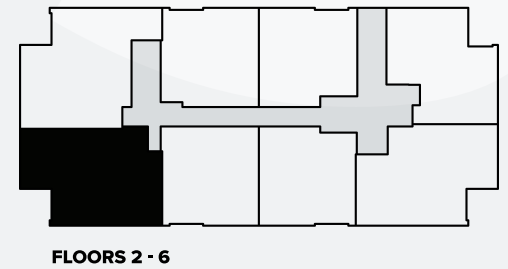
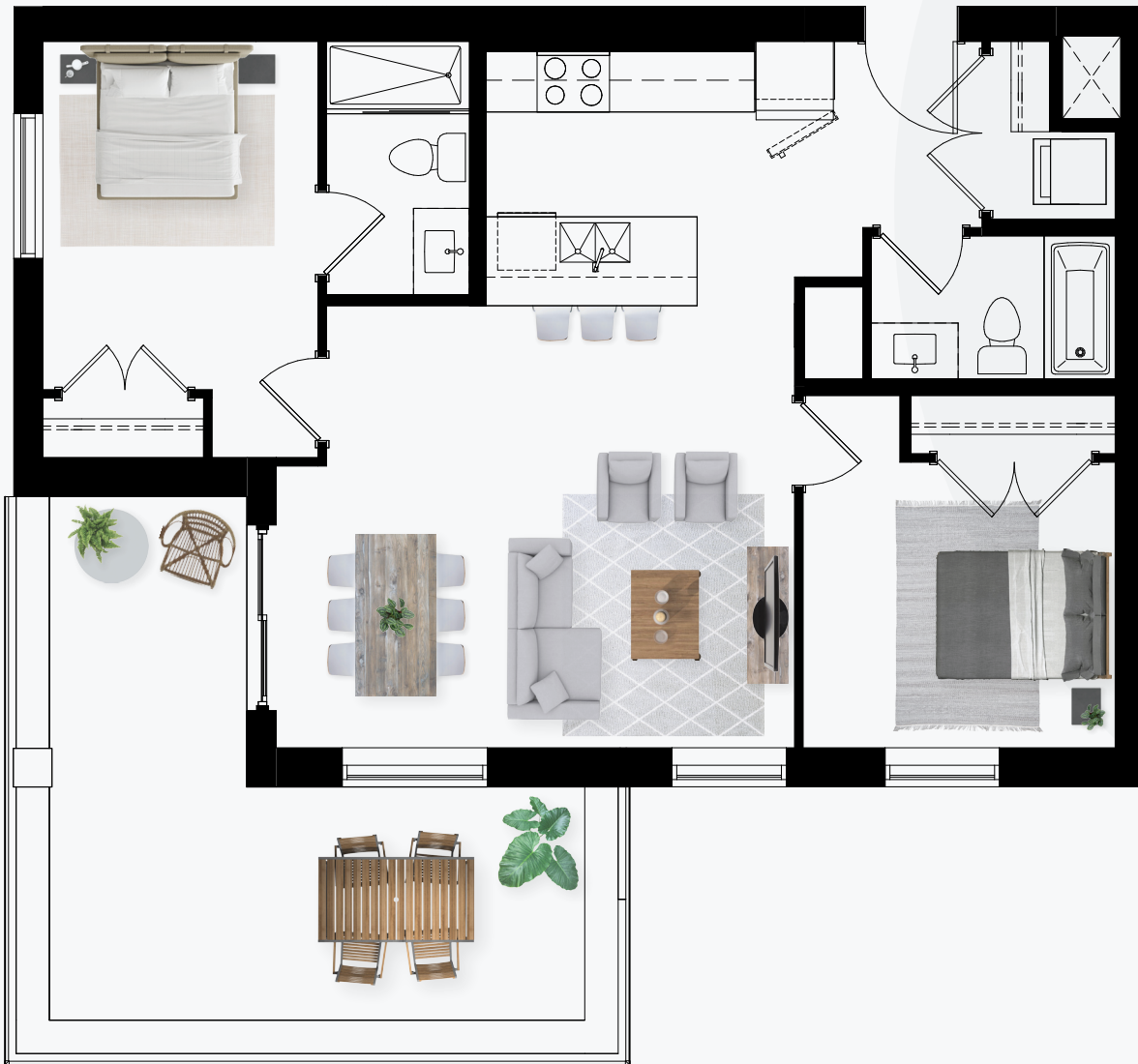
SUITE 2A
FLOORS 1 - 6

2 BEDROOM
2 BATHROOM

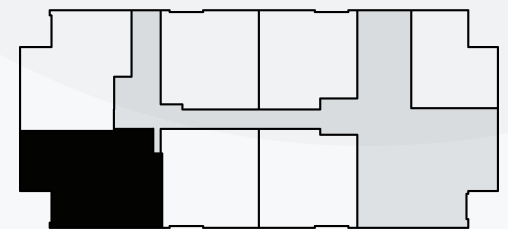
INDOOR LIVING
930 SQFT

BALCONY FLOORS 2-6
80 SQFT

PATIO FLOOR 1
290 SQFT
(SHOWN)



FLOORS 2 - 6



FLOOR 1

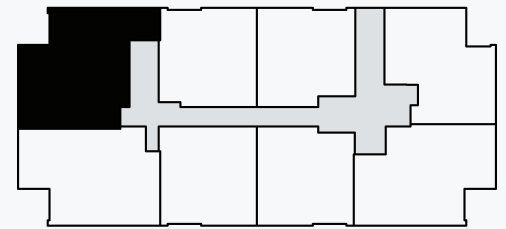
MARY

SUITE 2B (BF)
FLOORS 2-6

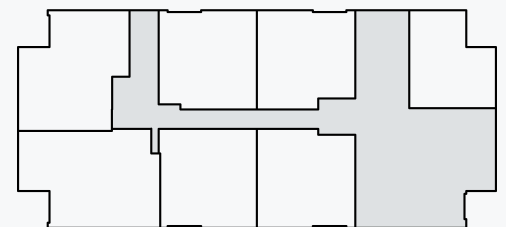
2 BEDROOM + DEN
2 BATHROOM

INDOOR LIVING
961 SQFT

BALCONY FLOORS 2-6
80 SQFT



FLOORS 2 - 6



FLOOR 1

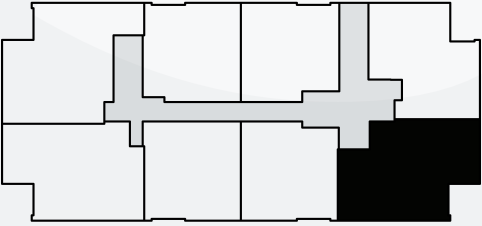
ALLEN

SUITE 2C
FLOORS 2 - 6

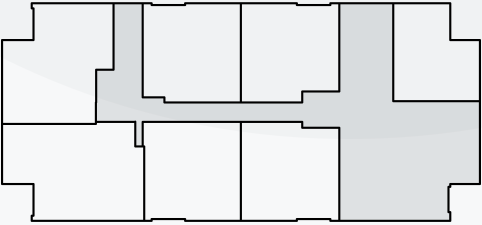
2 BEDROOM
2 BATHROOM

INDOOR LIVING
903 SQFT

BALCONY FLOORS 2-6
80 SQFT



FLOORS 2 - 6



FLOOR 1

Built By Your Neighbours, For Your Neighbours

The STRIDE development has been carried out by members of the local community who have a vested interest in creating a high-quality living space for their fellow neighbours.

This approach prioritizes the needs of the community and fosters a sense of ownership and pride. It also ensures that STRIDE is built with the community's unique needs and values in mind, creating a living space that is truly reflective of the local culture and character.

By working together, we look to build a truly exceptional living space that meets their collective needs and enhances the quality of life for everyone involved. This approach to development fosters a strong sense of community and encourages collaboration, making for a more vibrant and inclusive neighbourhood.

Meet The Team

Zehr Group

The Zehr Group is composed of top-performing project managers and coordinators, property managers, and site personnel. In addition to being leaders in their fields, many of their staff have achieved industry certifications including Gold Seal and LEED accreditations. For more information, visit www.zehrgroup.ca.

TrilliumWest

Your local real estate advisors. They are not your big box franchise, but instead a group of highly-skilled professionals who work and raise their families right here in the Region. Their goal is to find real solutions for real estate, create custom strategies and to earn your business each and every day. Visit www.trilliumwest.com.

STRIDELIVING.CA

BROUGHT TO YOU BY



Leading REAL ESTATE COMPANIES IN THE WORLD™
TRILLIUMWEST | WE'RE LOCAL WE'RE GLOBAL™