



SAFEGUARDING POLICY

FOR CHILDREN & YOUNG PEOPLE
AT BIRMINGHAM CITY FOOTBALL CLUB



INTRODUCTION TO Safety & Welfare

Birmingham City Football Club, put the safety and well-being of all children and young people at the centre of everything we do.

We aim to create an environment where you feel encouraged, listened to and able to reach your full potential.

You have the right to be safe wherever you are; at home, school, out and about and at football.

Everyone at Birmingham City FC has a responsibility to make sure that your well-being is put first.

That Means:

LISTENING TO YOU

MAKING SURE YOU ARE SAFE

TAKING ACTION WHEN NEEDED

We call it 'safeguarding' and it is really important to us because we know that when you are safe and happy you can make the most of every opportunity that football has to offer.



ANYONE UNDER 18 IS CONSIDERED A CHILD OR YOUNG PERSON

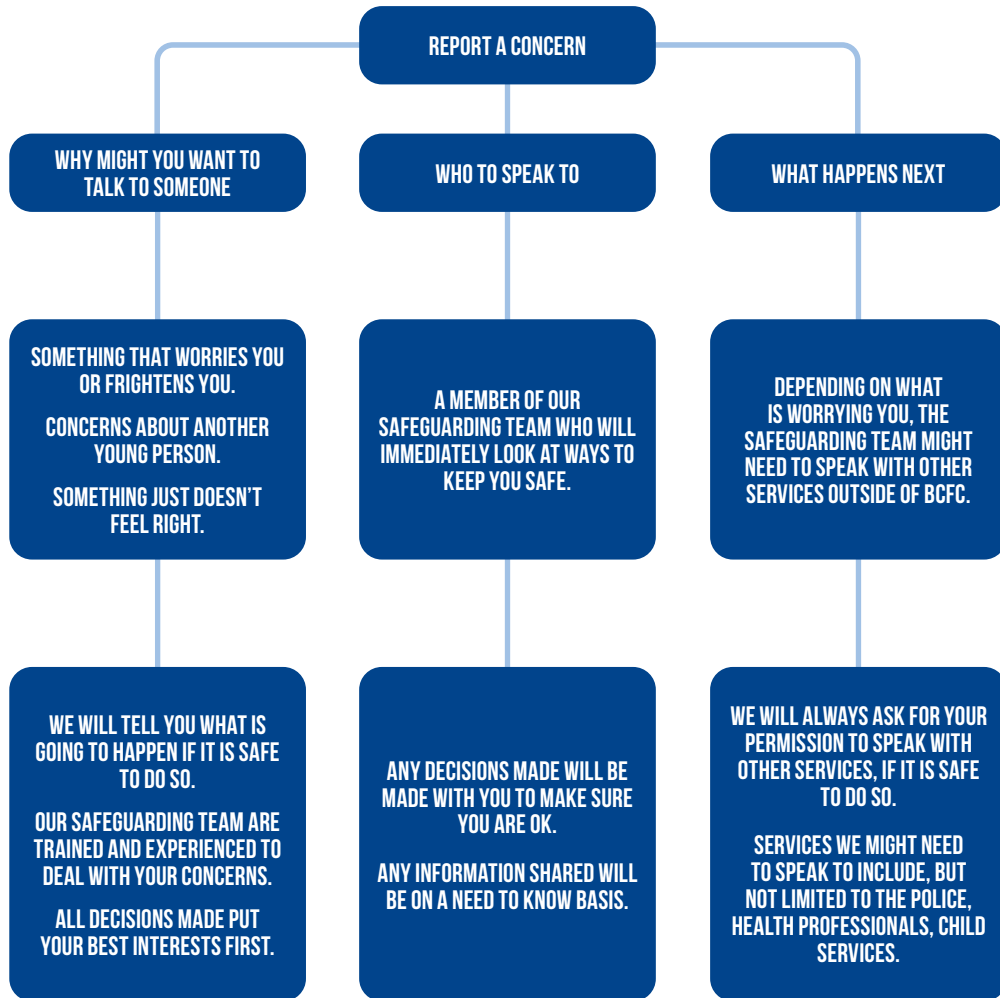
Stephanie Rolfe is the Club's Head of Safeguarding. You can contact her any time if you are worried about something or just need someone to talk to.

☎ 07817 359 329

✉ Stephanie.Rolfe@bcfc.com

SAFEGUARDING INDUCTION

WHAT WE DO TO KEEP YOU SAFE



SAFEGUARDING INDUCTION

TRAINED STAFF

It is really important that everyone at Birmingham City FC feels safe and happy, we make sure that:

- We have an open environment where you feel comfortable to tell someone if something worries you.
- What you say is taken seriously.

WHO IS RESPONSIBLE FOR SAFEGUARDING YOUNG PEOPLE AT BIRMINGHAM CITY FC?

EVERYONE

All members of staff at Birmingham City FC who work with children and young people are trained to look out and care for them.

We also have people whose job it is to make sure that the things you say are listened to and acted on. They are specially trained and know how best to deal with any worries you may have about your safety and well-being.

We want you to feel safe, happy and comfortable talking to us no matter what the worry.

YOU CAN TALK TO ANY ADULT YOU TRUST



SAFEGUARDING INDUCTION

WHAT IS ABUSE?

ABUSE IS ANYTHING THAT ANOTHER PERSON DOES THAT CAUSES HARM TO A CHILD OR YOUNG PERSON.

PHYSICAL ABUSE

When someone is hurting you.

Things like;
Hitting, smacking and slapping
Scolding or burning you
Spitting or throwing things at you
Shaking or suffocating you

SEXUAL ABUSE

This is when someone;
Touches you
Says things
Makes you watch
Makes you take part in

NEGLECT

When you don't have the things you really need to be well.

Things like;
Food, clean clothes, medicine. It also includes things like protection from harm and dangerous people.

EMOTIONAL ABUSE

When a person intentionally makes you feel bad about yourself, ignores you or puts you down.

Some examples are;
Putting you in a dangerous situation
Calling you names
Being aggressive and violent to other people in your presence

BULLYING

Means different things to different people. Generally it is when you are made to feel bad or humiliated by name calling, pushing or pulling or being threatened. This can happen anywhere – online or offline.

RADICALISATION

Radicalisation is when someone starts to believe and support extreme aspirations around terrorism, political, social or religious ideas.

**ABUSE IS NEVER OKAY.
IT IS NOT YOUR FAULT. YOU ARE NOT ALONE.
THERE ARE PEOPLE WHO CAN HELP**



SAFEGUARDING INDUCTION

BE S.M.A.R.T ONLINE (FROM CHILDNET INTERNATIONAL)

SAFE

Keep your personal information safe. When chatting or posting online don't give away things like your full name, password or home address. Remember personal information can be seen in images and videos you share too. Keep them safe to keep yourself safe.

MEET

Meeting up with someone you only know online, even a friend of a friend, can be dangerous as this person is still a stranger. If someone you only know online ever asks you to meet up, for personal information or for photos/videos of you then tell an adult straight away and report them together on www.thinkuknow.co.uk

ACCEPTING

Think carefully before you click on or open something online (e.g. links, adverts, friend requests, photos) as you never know where they may lead to or they may contain viruses. Do not accept something if you are unsure of who the person is or what they've sent you.

RELIABLE

You cannot trust everything you see online as some things can be out of date, inaccurate or not entirely true. To find reliable information compare at least three different websites, check in books and talk to someone about what you have found.

TELL

Tell a trusted adult if something or someone ever makes you feel upset, worried or confused. This could be if you or someone you know is being bullied online. There are lots of people who will be able to help you like your teachers, parents, carers or contact Childline – **0800 11 11** or www.childline.org.uk

BE SMART WITH A HEART

Remember to always be smart with a heart by being kind and respectful to others online. Make the internet a better place by helping your friends if they are worried or upset by anything that happens online.

You can report internet abuse at the click of a button on a really good website www.thinkuknow.co.uk



SAFEGUARDING INDUCTION

SOCIAL MEDIA GUIDELINES

ENGAGE & ENJOY

Social Media can be a positive force, both on a personal and Club level.

YOU ARE WHAT YOU POST

What image of yourself and the club do you want to portray? Remember once posted, there is no turning back. Deleting a social media post or text doesn't mean that's the end of it – screenshots can come back to haunt you.

IF IN DOUBT, DON'T DO IT

If you are unsure about a comment, a like, making a post or sharing content, then that should set the alarm bells ringing.

NO EXCUSES

You are responsible for everything on your social media accounts, whether or not you posted it. Ignorance of the meaning of words, phrases, images is not a defence.

BE SMART

Don't be caught off guard by indulging in inappropriate selfies, videos or even songs – other people might not think twice about making it public. Remember nowadays everyone has a camera phone.

DISCLOSURE

Please **do not** disclose any sensitive information about Club Operations and business e.g. player transfers, sponsorship deals, financials.

Please **do** quote, tweet, share official Club announcements in regards to positive news to help generate interest and point people to our media channels. Express yourself, but think, if the Club see this, what would they think?

PROTECT YOURSELF

Be careful about what person information you share.

TACT & DISCRETION

We would advise against liking, reposting or engaging with a rival club you support.

RESPECT OTHERS, RESPECT YOURSELF

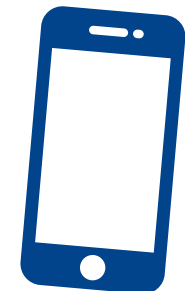
Please do not discriminate on race, gender, religious belief, sexual orientation, disability. Please don't post, host, text or email content that is hurtful, insulting, offensive, abusive, threatening or discriminatory.

BE SOCIAL, BE PART OF THE CLUB

Players must not "hide" or "mute" content from the official football club channel or football Club staff. To do so would be in direct contravention of the agreed policy.

& FINALLY

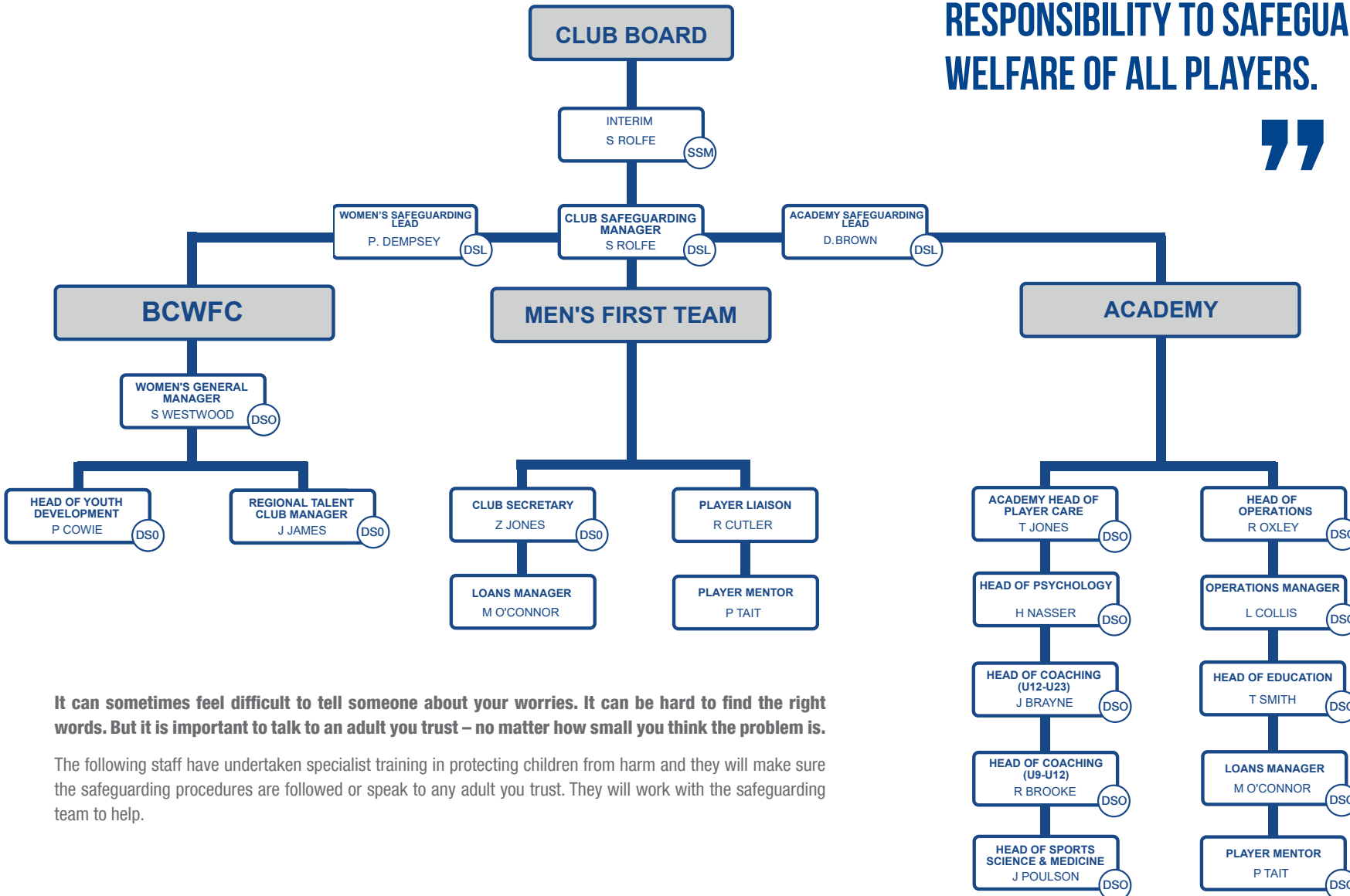
Be Yourself, & Remember Common Sense is King.



SAFEGUARDING INDUCTION TALK TO SOMEONE



BIRMINGHAM CITY FOOTBALL CLUB HAS A SPECIAL RESPONSIBILITY TO SAFEGUARD & PROMOTE THE WELFARE OF ALL PLAYERS.



It can sometimes feel difficult to tell someone about your worries. It can be hard to find the right words. But it is important to talk to an adult you trust – no matter how small you think the problem is.

The following staff have undertaken specialist training in protecting children from harm and they will make sure the safeguarding procedures are followed or speak to any adult you trust. They will work with the safeguarding team to help.



SAFEGUARDING INDUCTION

MORE INFORMATION AND ADVICE

If you ever feel unsafe or are worried for someone else's safety, you can contact the police On **101**. Or call **999** if it is an emergency.

You can find contact details for other helpful groups below.

<p>THE PFA SAFETY NET Offers confidential support to Academy players, trialists and their parents/guardians/ carers</p>	<p>TEL: 0330 236 8850 EMAIL: YOUTHADVISORY@THEPFA.COM</p>
<p>SPORTING CHANCE Offers support on Mental Health & Wellbeing and are available anytime, day or night.</p>	<p>TEL: 07500 000777 EMAIL: SUPPORT@SPORTINGCHANCECLINIC.COM</p>
<p>CHILDLINE Offers free, confidential and available any time, day or night.</p>	<p>0800 1111 WWW.CHILDLINE.ORG.UK</p>
<p>FRANK Find out anything you need to know about drugs, their effects and the law.</p>	<p>0300 123 6600 CALL FRANK 24 HOURS A DAY, 7 DAYS A WEEK. TEXT 82111 TEXT A QUESTION AND FRANK WILL TEXT YOU BACK.</p>
<p>YOUNG MINDS Provides free, 24/7 text support for young people across the UK experiencing a mental health crisis.</p>	<p>TEXT YM TO 85258</p>
<p>BEAT Support for those affected by eating disorders.</p>	<p>TEL: 0845 6341414</p>

