

# MONIER

## Elabana<sup>®</sup> Mineral Roof Tile

Long-lasting beauty  
that the world prefers



Antique Red

Part of **BMI**

[www.bmigroup.com/in](http://www.bmigroup.com/in)

# ELABANA®

## MINERAL ROOF TILES

Elabana ensures a beautiful roof with a range of attractive colours and peace of mind for years to come.

### PRODUCT & TECHNICAL DATA

Dimension	330mm (W) x 420mm (L)	
Batten Spacing*	295mm - 345mm	
Headlap	75mm - 125mm	
Coverage	9.7pcs/m <sup>2</sup> (based on 75mm headlap)	
Weight	Weight/piece	4.1kg - 4.2kg
	Weight/m <sup>2</sup>	40.7kg/m <sup>2</sup> (-2.9kg/m <sup>2</sup> )
Minimum Pitch	17.5°	



In view of innovation, the specifications are subject to change without any prior notice and in the event of such changes, BMI MONIER® shall ensure that the new specifications are equivalent if not better.

### Coverage and unit weight of tiles at various slopes

Slope (in degrees)	Minimum overlapping	Maximum batten space	Number of tiles	Unit weight
>17 and <27	100 mm	320 mm	0.966 / sq ft	± 4 kg / sq ft
>27	75 mm	345 mm	0.89 / sq ft	± 3.7 kg / sq ft



#### DIMENSIONALLY CONSISTENT

High quality toolings were used to produce BMI Monier Elabana roof tiles which gives it the dimensional consistency in shape and size to ensure high level of roof performance.



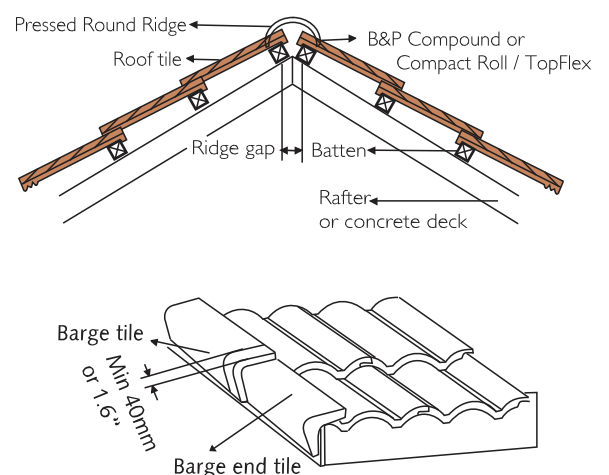
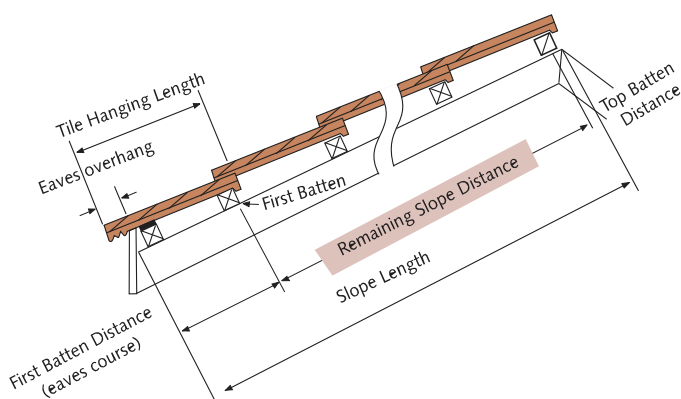
#### EASY INSTALLATION

Moulded with precision and uniformity to ensure dimensional stability for a consistent and perfect fit each time. Tiles can be laid cross bond and straight bond fashion.



#### COMPACT ROUND NOSE

The unique round nose, improves ageing by delaying fungus and algae growth at the nose of the tile. This feature is well-matched and suitable for Indian weather.



### Advantages over other roofing tiles:

- Easy installation
- Double grooved tiles with variable overlap
- Wide range of long-lasting plain and double-tone colours
- Complete range of fittings
- High breaking strength
- Dimensional stability and low water absorption
- Three decompression chambers under the tile improves water-tightness at the tile overlapping area
- Low energy consuming manufacturing process
- Unmatched production capacity in India



## Colours



Orange



Red



Dark Grey



Graphite



Deep Brown



Sunrise red



Antique Red



Antique Grey



Mahogany



Vintage Orange



Terra Brown



Antique Blue



Antique Green

## Fittings

### Ridge and Hips

Perfect finishing for your roof



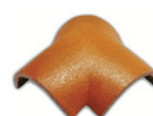
Ridge End



Ridge Tile



Hip Starter



3-Way Apex



4-Way Apex

### Barge

Aesthetic Way to protect the top of your walls and to safely finish your roof



Barge Tile



Barge End

### Vent Tile

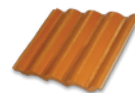
Brings additional ventilation between tiles and the concrete deck or the underlay



Vent Tile

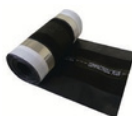
### Twin Mini Tile

Mainly for balcony roofs and windows shades coverage - 15 tiles / sq.m

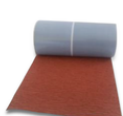


Twin Mini Tile

## Roof System Components for perfect finish, water-tightness and skylight



Compact Roll  
to ventilate  
ridges and hips



Easyflash  
for waterproof  
abutments



Valley Metal Sheet  
for water  
orienteering



Veltisun  
RadenShield for  
waterproofing  
and heat reduction



Radiant Barrier  
for heat  
reduction



Translucent Tile  
for  
natural light

# MONIER



Visit our exclusive showroom and orientation center,  
Monier Roofing Pvt Ltd.  
143/C3, Bommasandra industrial area, 1st phase, Bangalore - 560099  
Tel : 080 41658016 / 27, Mob: +91 90191 10303, +91 96866 63013  
Email : [contact.india@bmigroup.com](mailto:contact.india@bmigroup.com), [www.bmigroup.com/in](http://www.bmigroup.com/in)



Authorized Roofing Partner

 [facebook.com/bmigroup.india](https://facebook.com/bmigroup.india)  
 <https://twitter.com/bmimonierindia>  
 Chat @ [90191 10303](https://api.whatsapp.com/send?phone=9019110303)