



Trainee gains hands-on skills in vegetation management and wildfire mitigation at AntFarm Youth Services.

PGE Foundation Impact Report 2025



Advancing opportunity across Oregon



Angelica Espinosa – Chair

Kregg Arntson – Executive Director

At the PGE Foundation, we believe strong communities thrive when people have opportunities to gain the skills, tools and knowledge they need to pursue meaningful work and community connections that endure over time. As an independent grantmaking organization, aligned with the priorities of Portland General Electric, we are dedicated to helping communities across Oregon through philanthropic investments in education, workforce readiness and community resilience.

In 2025, our Career-Connected Learning grants supported organizations that provide hands-on, real-world experiences for students across the state. These investments spanned career technical education, STEM and creative learning experiences that helped individuals explore career pathways, develop confidence and translate learning into meaningful work.

Through our Responsive Philanthropy Fund, the Foundation responded to immediate community needs during a year of economic uncertainty for many families. We supported the Boardman Food Pantry and Oregon Food Bank, to help ensure community access to essential nutrition following reductions in publicly funded food benefits. These grants reflect our commitment to standing alongside trusted local organizations when communities face sudden or increased hardship.

Reaching communities across Oregon remains central to our mission. In 2025, 23% of total grant funding supported rural communities outside of the Portland tri-county areas — a 6% increase from the prior year. Our grantees are expanding access to education, workforce training and economic opportunities in ways that respond to local priorities and build long-term capacity.

Looking ahead, PGE Foundation's new Climate Resilient Communities Fund, developed in collaboration with community partners across the state, will support locally led efforts that help communities prepare for, adapt to and recover from the impacts of climate-related disruptions. The goal is practical, community driven resilience — supporting solutions that reflect local knowledge and strength of readiness for the challenges ahead.

We are grateful to our nonprofit community, Board of Trustees and communities across Oregon for their leadership, collaboration and trust. Together, we are investing in people, places and partnerships that strengthen communities and support shared prosperity across the state.

Sincerely,

Evolving impact: climate resilient communities

In 2026, the PGE Foundation will launch a new grant pillar focused on climate resilient communities—an investment shaped by listening closely to the people and organizations working on the front lines of climate change across Oregon.

Over the past several years, community partners have told us clearly and consistently that climate impacts are already here, unevenly felt, and deeply connected to housing stability, public health, environmental quality and economic opportunity. In response, the Foundation set out to engage community in design, learning alongside those with lived experience and long-standing expertise. More than 20 community organizations contributed their time, insight, and candor to help shape this fund—informing its priorities, approach and values.

The Climate Resilient Communities fund is designed to support community-driven solutions that reduce the risks of climate impacts, strengthen preparedness and build long-term resilience, particularly in communities historically under-resourced and overexposed to environmental harm. The Climate Resilient Communities fund complements the Foundation's long-standing investments in education and workforce development by addressing upstream conditions that affect community stability, health and economic opportunity. It builds on the work of trusted partners who have been advancing resilience for decades—organizations like Depave, Friends of Trees and many others—while also creating space for new voices and locally rooted innovation.

This fund reflects a simple belief: resilient communities are built through collaboration, trust and shared responsibility. We are grateful to the partners who helped bring this vision to life and look forward to learning together as the work continues.



Young hands planting seeds for healthier, resilient communities at Wapato Island Farms. Photo Credit: Portland General Electric

“This fund is the result of listening – listening to community leaders who know what resilience looks like on the ground and who reminded us that the best solutions are built together.”

— Kregg Arntson, Executive Director, PGE Foundation



A landmark moment as Friends of Trees celebrates planting its one-millionth tree — growing a greener future for our region.

Powering prosperity for Oregonians



Learning by doing, an AntFarm trainee masters high-demand workforce skills. Photo credit: AntFarm Youth Services



Middle schoolers in Hillsboro explore career possibilities. Photo Credit: Hillsboro Schools Foundation

Economic prosperity is built through opportunity to learn, create and connect educational experiences with meaningful careers.

In 2025, our work was guided by a simple but powerful idea we call **Powering Prosperity**: supporting Oregonians through a continuum of hands-on, applied and career-connected learning experiences that strengthen workforce development and expand access to family-wage jobs.

Our grants align with three interconnected funding priorities: **Career-Connected Learning, Creative Expression and Career Pathways**. Together, these strategies reflect our belief that learning does not happen in isolation. It happens when young people explore their interests through creative experiences, when students gain real-world skills through applied learning and when individuals can access clear, supported pathways into meaningful careers.

Career-connected learning

Building futures through hands-on learning

Families, educators, employers and students alike recognize the importance of introducing students to STEM and career and technical education (CTE) well before high school, when interests and aspirations begin to take shape.

As school districts face stretched budgets and growing demands that make it difficult to fully fund these experiences, local school foundations and community-based education organizations are stepping up to help close the gap. The PGE Foundation supported organizations addressing the growing need to engage students early and often in applied, career-connected learning that builds skills, confidence and curiosity.

Through the **Beaverton Education Foundation**, more than 150 middle school students were introduced to CTE learning, while nearly 1,000 eighth-grade science students participated in project-based learning focused on clean energy — bringing science concepts to life through real-world application. The **Hillsboro Schools Foundation** supported welding education and workforce development experiences for more than 800 middle school students, offering early exposure to in-demand skills and career pathways.

In Central Oregon, **The School Foundation** (Bend-La Pine) expanded classroom STEM and CTE enrichment in high-need schools, strengthening hands-on learning opportunities where they are needed most. Organizations like **Oregon STEM** are influencing education systems to ensure these strategies result in relevant, real-world STEM and CTE learning for every student regardless of zip code.

Together, these investments reflect PGE Foundation’s commitment to investing in career-connected learning that prepares students for future success.



Beaverton middle school students discover opportunities through hands-on activities. Photo Credit: Beaverton Education Foundation

45 higher education scholarships awarded



Bend Tech Academy students build emergency shelters following wildfire. Photo Credit: The School Foundation

“Oregon STEM is expanding career-connected learning and opening doors for students —especially in rural and under-resourced communities—to Oregon’s clean energy and technology careers.”

— Kyle Ritchey-Noll, Board Chair, Oregon STEM

Creative expression

Empowering youth to connect and create

The PGE Foundation firmly believes that arts and creative learning are not extras—they are essential to healthy development and lifelong learning. Creative learning experiences help young people build confidence, resilience and a sense of belonging; outcomes consistently valued by educators, parents and employers across Oregon.

Through our Creative Expression grants, we invest in organizations that integrate creativity into education and youth development, with a focus on communities where access to arts experiences may be limited.

A three-year funding commitment was made to **Caldera**, a creative arts and environmental education nonprofit connecting urban and rural communities. Caldera engages students in Portland through immersive nature-based learning experiences at its location in Sisters, encouraging exploration, connection and personal growth.

This collaboration supports the **Caldera Phenomena** capacity-building project, which will strengthen and expand Caldera's youth programming while laying the groundwork for long-term impact at the intersection of resilience, leadership and social connection.



Caldera youth explore the world through their individual lenses. Photo Credit: Caldera

“Multi-year grants like this represent more than funding – they are a true partnership. PGE Foundation’s investment affirms the power of Caldera’s year-round, seven-year cohort model and enables students to reach its culminating High School Apprenticeship experience.”

— Kimberly Howard Wade, Executive Director, Caldera



Art becomes a canvas for youth voices, ideas, and limitless creativity. Photo credit: Caldera

“Caldera doesn’t just encourage artistic growth; it teaches young leaders to align their creative energy with purpose.”

— Yellow Jacket, recent Caldera learning graduate



Photo credit: Portland Art Museum

The **Portland Art Museum** celebrated the opening of the long-awaited Mark Rothko Pavilion in November 2025. As a longtime supporter of the Portland Art Museum, the PGE Foundation celebrates this extraordinary community effort to create a welcoming space for Oregonians and visitors alike to share in Portland’s rich arts and culture offerings.

Career pathways

Community-powered pathways to prosperity

Access to meaningful work — work that brings purpose, dignity and family-sustaining wages — is foundational to strong, resilient communities. Yet job training, mentorship and real-world experience for youth and adults in Oregon is often uneven and out of reach.

Through the PGE Foundation’s Career Pathways funding priority, we invest in organizations that remove barriers to employment and create hands-on opportunities rooted in community needs and addressing local workforce challenges.

For example, in Sandy, **AntFarm Youth Services** provides education, job training and wraparound support for youth and adults facing barriers to employment. Through paid work experiences, skill-building projects and community-based services, AntFarm helps participants build confidence, credentials and a stronger connection to their local economy.

Heart of Oregon Corps is building Oregon’s only dedicated youth workforce development campus in Redmond, which broke ground in September 2025. Heart of Oregon Corps trains rural and underserved youth across Central Oregon for careers that address the region’s most pressing needs, including construction, childcare, wildfire risk reduction and public lands conservation. Situated on a 3.4-acre site, the campus will serve Deschutes, Jefferson and Crook counties as an inspiring central hub for expanded training, certifications and youth support services.

Together, these investments demonstrate PGE Foundation’s commitment to strengthening economic prosperity for individuals and communities.

“Talent is universal. Opportunity is not. That’s why the PGE Foundation is here to open doors.”

— Angelica Espinosa, Board Chair, PGE Foundation



AntFarm youth develop industry skills through hands-on learning in the field. Photo credit: AntFarm Youth Services

“Heart of Oregon Corps’ new central campus, opening in fall of 2026, will expand opportunity for Central Oregon youth, removing barriers and equipping them with the skills, confidence and experience needed to succeed in work and life. This generational resource will prepare young people for thriving careers while fueling a stronger regional economy as they take on some of Central Oregon’s most urgent challenges.”

— Laura Handy, Executive Director, Heart of Oregon Corps



Heart of Oregon Corps students and alumni break ground on the new Redmond campus. Photo credit: Heart of Oregon Corps

Responsive philanthropy

Answering the call in 2025: Food security

In times of acute need, access to food can quickly become a serious challenge for families and communities. As rising costs, economic strain and climate-related disruptions increased demand on emergency food providers across Oregon, the PGE Foundation activated its Responsive Philanthropy Fund to deliver timely, flexible support beyond its core giving priorities.

The Responsive Philanthropy Fund allows the Foundation to listen closely and act when conditions call for immediate support — recognizing that trusted community organizations are best positioned to respond in real time.

Standing beside respected organizations — including the **Oregon Food Bank** and local providers such as the **Boardman Food Pantry** — the PGE Foundation joined Oregon’s philanthropic community during a moment of heightened need to help stabilize and support essential services when they mattered most for families, seniors and children across the state.



Portland General Electric employees gift time and energy to the Oregon Food Bank. Photo credit: Portland General Electric

“As hundreds of thousands of our neighbors faced disruption to SNAP benefits, communities across Oregon came together to ensure families could still access the food we all need to thrive. PGE Foundation’s longstanding partnership with Oregon Food Bank and timely investment strengthened both immediate hunger relief and the long-term solutions that end hunger and its root causes for good”

— Alison Wandschneider, Oregon Food Bank spokesperson



“The PGE Foundation’s support allows us to rebuild more than a pantry, but to also strengthen hope and stability for families across our community. We’ve made a promise to our community that compassion and partnership can make a lasting difference.”

— Mary Killion, Boardman Food Pantry

Portland General Electric employees in Boardman volunteer at the Food Pantry in Spring 2025, months before a fire destroyed the building. Photo credit: Portland General Electric

By the numbers

\$33 million+

Grants paid since 1997

\$1,626,053

Total grants paid in 2025

68%

Dollars awarded supporting communities of color

45

College scholarships

26

Grants given by Community 101 students in 10 PGE Foundation supported schools

70%

Project Zero* interns from communities of color

56%

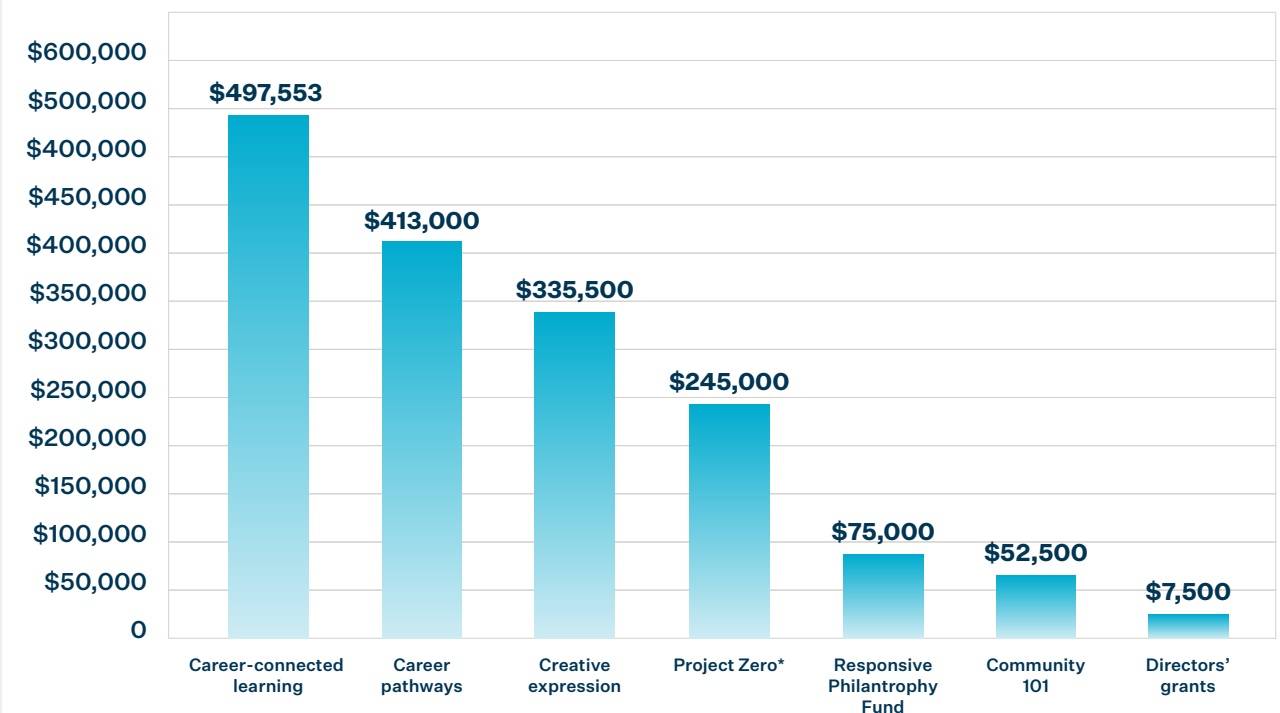
Grants of \$25,000 or more

5th

Corporate Philanthropy Award rank, Portland Business Journal

23%

Dollars granted outside Portland Metro, exceeding 18% goal



*Project Zero is a green jobs internship program for underserved youth originally established by PGE and the PGE Foundation. In 2025, the program transitioned to Portland Opportunities Industrialization Center (POIC), where it now operates as Roots of Change and continues its mission.

Grants

Career pathways

\$20,000+

- Adelante Mujeres
- AHIVYOY (Asociación Hispana de la Industria del Vino en Oregon y Comunidad)
- AntFarm
- Constructing Hope
- Heart of Oregon Corps
- Immigrant And Refugee Community Organization (IRCO)
- LatinoBuilt Foundation
- NECA - IBEW Electrical Training Center
- New Avenues for Youth
- Our Just Future
- Portland Community College Foundation
- Urban League of Portland

\$15,000+

- Be-Blac Foundation
- Centro Cultural del Condado de Washington
- Community Action Organization
- Dress for Success Oregon
- Latino Business Alliance
- Xcelerate Women

\$10,000

- MicroEnterprise Resources Initiatives and Training (MERIT)
- Northwest Native Chamber
- Portland YouthBuilders
- Unidos Bridging Community

Creative expression

\$20,000+

- Artist Mentorship Program
- Arts for Learning Northwest
- Literary Arts
- Portland Art Museum CUT

\$15,000

- Caldera
- Ethos
- Oregon Children's Theatre Company
- Oregon Symphony Association
- PassinArt: A Theatre Company
- Portland Opera Association

\$10,000+

- Friends of Noise
- Bag&Baggage Productions
- Beaverton Black People's Union
- Confluences
- Hand2Mouth
- Metropolitan Youth Symphony
- Michael Allen Harrison's Play it Forward
- Northpole Studio
- Oregon East Symphony
- p:ear
- Portland Playhouse
- Scalehouse
- Wonderfolk

\$5,000+

- Bend Pops Orchestra
- Miracle Theatre Group
- Oregon Bravo Youth Orchestras

Career-connected learning

\$25,000+

- All Hands Raised
- Central Oregon STEM Hub
- Friends of Saturday Academy
- Girls Inc. of the Pacific Northwest
- Oregon MESA
- Oregon STEM
- Portland Opportunities Industrialization Center (POIC)
- Willamette Workforce Partners/Team Oregon Build

\$20,000+

- Boys & Girls Clubs of Portland Metropolitan Area
- Camp ELSO
- Juntos - Oregon State University Foundation

\$15,000

- Beaverton Education Foundation
- Girl Scouts of Oregon and Southwest Washington
- OHSU OnTrack!
- Todos Juntos

\$7,500+

- College Possible
- Hillsboro Schools Foundation
- The School Foundation

Community 101

\$52,500

Community 101 is the student leadership program created by the PGE Foundation in 1997 and now administered by the Oregon Community Foundation.

Illumination Scholarships

\$25,000+

- Oregon Alliance of Independent Colleges & Universities
- Oregon State University Foundation
- Portland State University Foundation

\$10,000+

- Oregon Tech Foundation
- University of Oregon Foundation

\$5,000

- Black United Fund
- Hispanic Metropolitan Chamber
- Pride Foundation
- The Skanner
- United Negro College Fund

Responsive Philanthropy Fund

\$50,000

- Oregon Food Bank

\$25,000

- Boardman Food Pantry

Roots of Change

\$245,000

Roots of Change is a green jobs internship program that provides young people with job skills for environmental stewardship and green economy careers. Established by the PGE Foundation in 2020 as Project Zero, the program transitioned in 2025 to Portland Opportunities Industrialization Center.

About the Foundation

The PGE Foundation, an independent philanthropic organization, aligns its grantmaking with Portland General Electric's commitment to the communities it serves. Founded in 1997, the Foundation was created through an endowment with the express purpose of improving the quality of life for Oregonians. Since its inception, more than \$33 million has been awarded to community organizations across the state.

OFFICERS



Angelica Espinosa
Chair
Senior Vice President,
Chief Legal and Compliance
Officer, PGE



Verlea Briggs
Vice-Chair
Senior Manager, Strategic
Asset Management, Supply
Chain Fleet Storeroom, PGE



Kregg Arntson
Executive Director
Director of Community
Impact, PGE

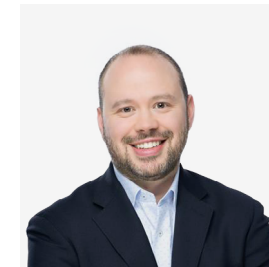


Ian Preddy
Treasurer
Senior Director,
Supply Chain, PGE



Julie Franz
Secretary
Senior Executive
Assistant to COO, PGE

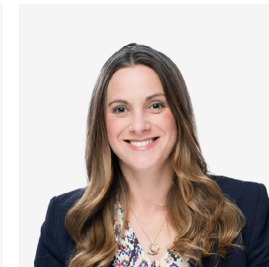
BOARD OF DIRECTORS



Chris Liddle
Senior Director
Treasurer, PGE



James F. Lobdell
Retired CFO and Sr. VP
Finance and Treasurer, PGE



Maria Ouellette
Director
Engineering Services, PGE



Maria Pope
President and CEO, PGE

STAFF



Melissa Dubois Lewis
Program Officer



Michele Keever
Grants Administrator

WITH APPRECIATION TO FOUNDING BOARD MEMBER RANDY MILLER



Randy Miller
PGE Board of Directors,
1997-2025

As PGE Foundation's longest-serving board member, Randy Miller has profoundly shaped the Foundation's philanthropic mission and impact on the Oregon community. Throughout his remarkable 28-year tenure, Randy served with unwavering dedication and visionary leadership. We are grateful for his engagement as a curious, thoughtful and trusted counselor. We celebrate Randy's exceptional civic leadership and tireless commitment to advancing Portland's economic and cultural vitality. His legacy will continue to inspire our work for years to come.

"What stands out isn't the amount of time Randy devoted, it's the way he has approached the work — with boundless enthusiasm, steadfast loyalty and forward-thinking vision."

— Maria Pope, PGE Foundation board member, PGE President and CEO



Foundation