

An aerial, top-down view of a large, circular arena. The arena has a green, grassy field in the center, which is surrounded by a dark, metallic-looking structure. The structure has a grid-like pattern and is illuminated by bright, circular lights. The arena is surrounded by a dark, industrial-looking environment with various structures and pipes. The overall atmosphere is futuristic and high-tech.

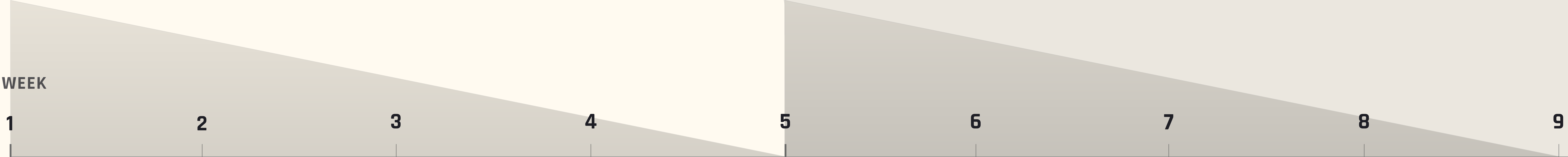
# STAR ATLAS Golden Era

Start Sequence

COUNCIL OF PEACE ASSET CATALOG  
SUPPORT YOUR FACTION  
[staratlas.com](http://staratlas.com)



# Golden Era: Start Sequence



○ Phase 1

**Titan Sales**  
**Ship Sales**

○ Phase 2

**Claim Stake Sales**  
**Central Space Station Land & Hab**



Phase 1

# Titan Sales

Titan class spaceships are cosmic behemoths, the pride of their factions. They are unmatched in conquests of deep space. In total, each Star Atlas faction has access to just 3 Titan class ships. Three additional Titan models, one per each remaining faction, will be released in the future, bringing the number of different Titan models to 6, a maximum of 18 in total.

START SEQUENCE INVENTORY

Availability: Week 1-4  
Three Titan Class Spaceships

MODELS

- Pearce T1 (MUD)
- Busan The Last Stand MK3 (ONI)
- Fimbul ECOS Superphoenix (ECOS)

Regular Manufacturer price: \$5,000,000 each  
Start Sequence Price: \$1,000,000 each - 80% DISCOUNT  
Over 4 consecutive weeks, price discount is reduced by 10% each week (80% - 70% - 60% - 50%)

Earning SCORE rewards at a VWAP of \$5,000,000  
Each model receives a custom commemorative Titan skin representing participation in the Start Sequence





Phase 1

# Ship Sales

START SEQUENCE INVENTORY

Availability: Week 1-4

Very limited set of select ship models on sale at 80% discount.  
Limited quantity of 1% or less of this ship inventory has been sold.

Earning SCORE rewards at a normal VWAP

Each model receives a custom commemorative skin representing participation in Start Sequence  
Sales history for Large, Capital, and Commander Class ships will be used to  
airdrop one bonus ship per each ship purchased.

Over 4 consecutive weeks, price discount is reduced by 10% each week (80% - 70% - 60% - 50%)

|                      |           |
|----------------------|-----------|
| Pearce D9            | Capital   |
| Ogrika Sunpaa        | Large     |
| Busan Maiden Heart   | Capital   |
| Fimbul Mamba         | Medium    |
| Pearce R6            | Small     |
| Fimbul BYOS Tankship | Commander |





# Claim Stake Sales

Claim stakes are physical objects that must be transported to a chosen planet in order to lay claim to a plot on its surface. Claiming a planetary plot grants the owner access to extracting available local resources.

They play an important role in the Golden Era. Together with mining drills and powerplants, claim stakes are a necessary structural component to enable linking planetary operations with orbiting space stations, and protecting all mining structures (mining drills and power plants) to keep resource extraction operational. Space squatting is discouraged with a tax to maintain ownership of the plot.

## START SEQUENCE INVENTORY

Availability: Week 5-8

## UTILITY

Activated in the first mainnet release of SAGE to enable mining, crafting, starbase building, and claim staking

Tier 1 Claim Stake (Common Resources)  
Tier 2 Claim Stake (Uncommon Resources)  
Tier 3 Claim Stake (Rare Resources)  
Tier 4 Claim Stake (Epic Resources)  
Tier 5 Claim Stake (Legendary Resources)

## ALSO ON OFFER

Mining drills, power plants, and space stations  
It will be possible to acquire these items along with claim stakes.





# Central Space Station Land & Hab Sales

## START SEQUENCE INVENTORY

Availability: Week 5-8

Residential estate on central space stations provides a number of features and wider utility, such as cargo storage, landing pads, exclusive indoor and outdoor paint, pet houses, sculptures, crafting stations and crafting rate improvements for galactic explorers.

All land in this offer will include a hab. Future land releases will sell habs separately.

Depending on its plot size, the purchased hab will come with all the utility and features that would otherwise need to be purchased separately.

All land in this offer will include an exclusive ship skin.

Whitelist Access: Purchased land will be whitelisted and receive priority in selecting a specific plot location on the CSS when lot selection opens. Plot selection will require an auction process when plots open, though competition for lot selection will be lower since a limited quantity of land will be sold in this release.

The land purchased in this release will also provide a whitelist for future commercial plot sales.

Purchased land will also receive a commemorative badge representing participation in the Start Sequence.

Perks: Land/ Hab owners get cargo space increases at their Central Space Station.  
Land/ Hab owners also get crafting rate increases for R4 resources at their Central Space Station.





# Central Space Station Land & Hab Sales

Inventory will be released in tranches with additional discounts - up to 10% of total land estate.

First wave: 2.5% of total land at 15% off

Second wave: 2.5% of total land at 10% off

Third wave: 2.5% of total land at 5% off

Fourth wave: 2.5% of total land at 0% off

There are six tiers of Central Space Station land claims:

Tier 0 to Tier 5 - priced based on size of parcel

The land purchased will also receive a ship based on the size of the plot.

Each of these ships is from an inventory of unreleased spaceship models. These ships will remain exclusive to the users until a future public market release. Ship models include:

Tier 0 Land - n/a

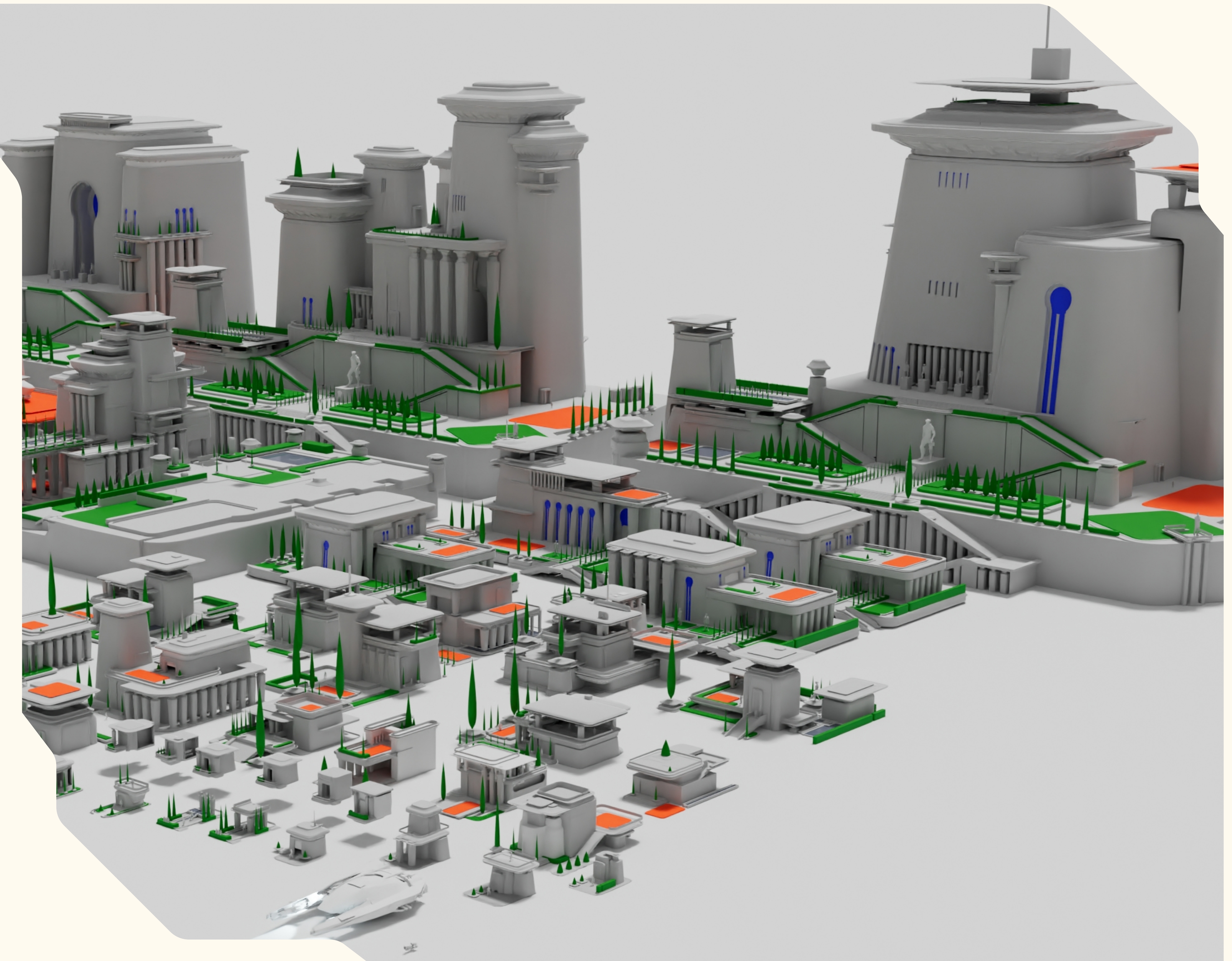
Tier 1 Land - XXS - Calico Scud

Tier 2 Land - XXS - Calico Scud and Calico Maxhog

Tier 3 Land - XS - Ogrika Niruch, Calico Scud and Calico Maxhog

Tier 4 Land - S - Opal Rayfam, Ogrika Niruch, Calico Scud and Calico Maxhog

Tier 5 Land - M - Fimbul Mamba EX, Opal Rayfam, Ogrika Niruch, Calico Scud and Calico Maxhog





# STAR ATLAS Golden Era

## Start Sequence

“The first to arrive at the universe’s next frontier  
is the first to knock on the gates of prosperity.”  
– **Ustur Armi.eldr.**

Visit  
[play.staratlas.com](https://play.staratlas.com)

