

AIRCRAFT NOISE REPORT

2024 ANNUAL SUMMARY

Cincinnati/Northern Kentucky
International Airport

Published February 2025



Aircraft Noise Report

2024 Annual Summary

Table of Contents and Summary of Report

Introduction; Page 2

This page provides an introductory message, providing purpose and intent behind the annually released aircraft noise report.

2024 Noise Summary Page 3

This page provides introductory data points from all complaints recorded through 2024; including all reported states and top ten complaint locations.

Kentucky Noise Capture Page 4

Provides reported complaint counts from Kentucky, broken down by county and city.

Ohio & Indiana Noise Capture Page 5

Provides reported complaint counts from Ohio and Indiana, broken down by county and city.

2024 Operational Impacts & Closure Summary Page 6

Provides noise impacting projects and closures that occurred throughout 2024, and includes a month by month capture of operations and complaint counts.

Hourly Insight Page 7

This page provides complaint totals by hour during both daytime operations (7am - 10pm) and nighttime operations (10pm-7am).

Complaints by Event Type & Contact Method Page 8

Complaints received for the reporting period are detailed by type of noise event and proportion of utilized contact methods.

Runway Utilization Page 9

Provides runway utilization by arrivals and departures, both count and percentage, supplemented with an aerial runway view for reference.

Frequent Complainants Page 10

This report shows the number of complaints made by the most frequent/repeat complainants for the reporting period.

Historical Operation and Complaint Counts Page 11

This report shows the number of complaints made by the most frequent/repeat complainants for the reporting period, compared with operation counts.

Sisters of Charity Quarterly Monitoring Page 12

This report details the noise monitoring location and results for each reporting period.



Introduction

The CVG Airport Authority, owner/operator of the Cincinnati/Northern Kentucky International Airport (CVG), issues an annual noise report sharing data and detailing information pertinent to noise and community impacts. The general purpose of this report is to provide a statistical summary of aircraft operations and noise-related feedback received in CY2024.

Personal data of complainants remain confidential, but key data points are aggregated to share insights and promote understanding of the operational impacts of the airport to the community.

The CVG Airport Authority works with the community, particularly noise-sensitive areas, to promote understanding and information-sharing on efforts that have been and are undertaken to minimize the impact of aircraft noise on the community. The CVG Airport Authority is proud to maintain its long-standing commitment to address local aviation noise concerns.

If you have questions or concerns regarding this report, please contact the CVG Noise Abatement Team at noise@cvgairport.com or by calling (859) 767-7020.

2024 Noise Summary

Total Complaints **1,087**

Aircraft Operation Count **157,971**

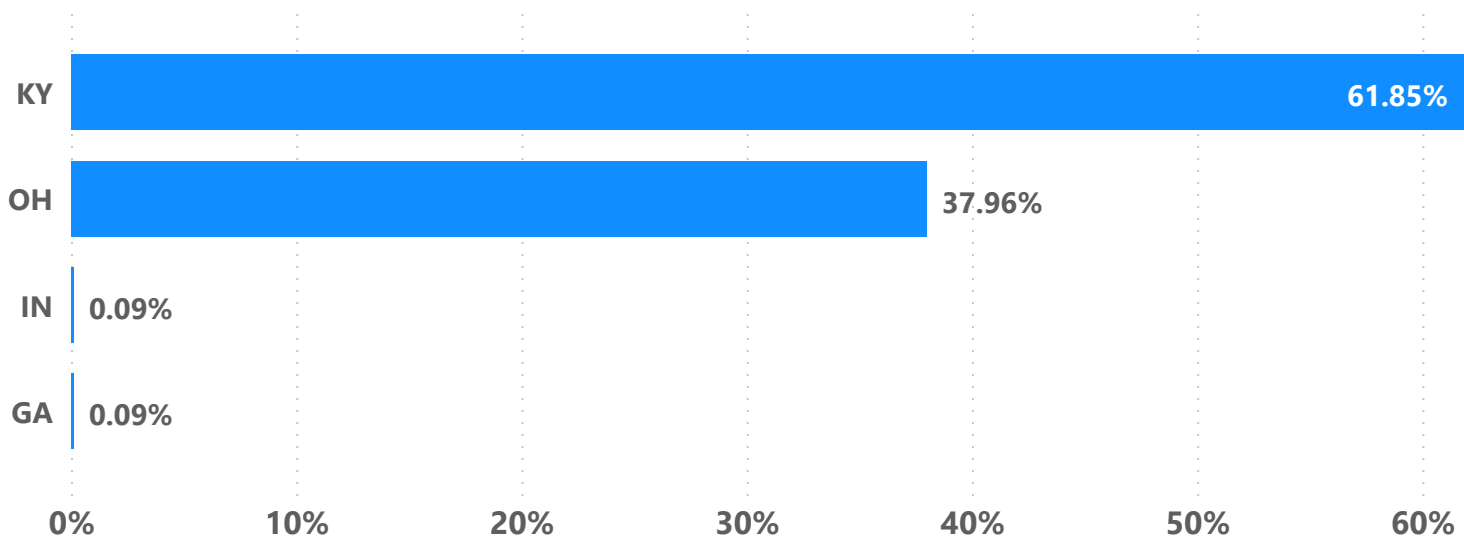
"Airport Operation Count" includes all departures and arrivals; including military, air carrier, commuter & air taxi, and other general aviation flights.

Total Complainants **255**

"Frequent" complainants are responsible for submitting 10 or more complaints in 2024.

Top 10 Reported Locations						
#	City	County	State	Operation	Complaints	%
1	Cincinnati	Hamilton County	Ohio	18C Arrivals	387	35.64%
2	Union	Boone County	Kentucky	36R Arrivals	173	15.93%
3	Florence	Boone County	Kentucky	18L Departures	146	13.44%
4	Fort Mitchell	Kenton County	Kentucky	27 Arrivals	98	9.02%
5	Independence	Kenton County	Kentucky	18L Departures	67	6.17%
6	Hebron	Boone County	Kentucky	36C Departures	57	5.25%
7	Burlington	Boone County	Kentucky	27 Departures	44	4.05%
8	Edgewood	Kenton County	Kentucky	27 Arrivals	27	2.49%
9	Villa Hills	Kenton County	Kentucky	27 Arrivals	25	2.30%
10	North Bend	Hamilton County	Ohio	36C Departures	10	0.92%

2024 Reported States

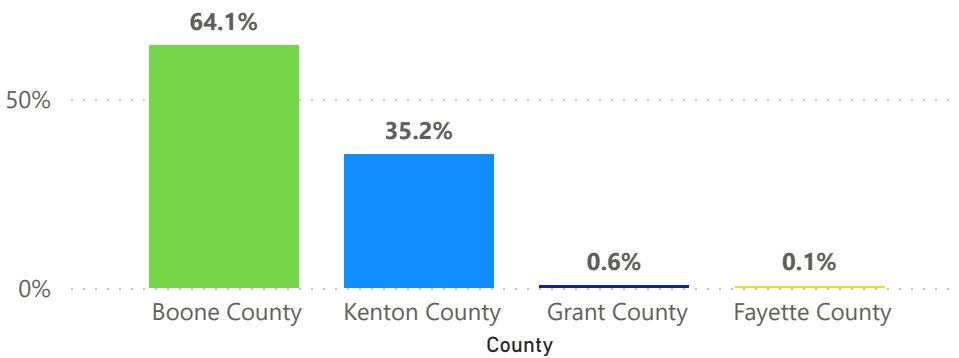
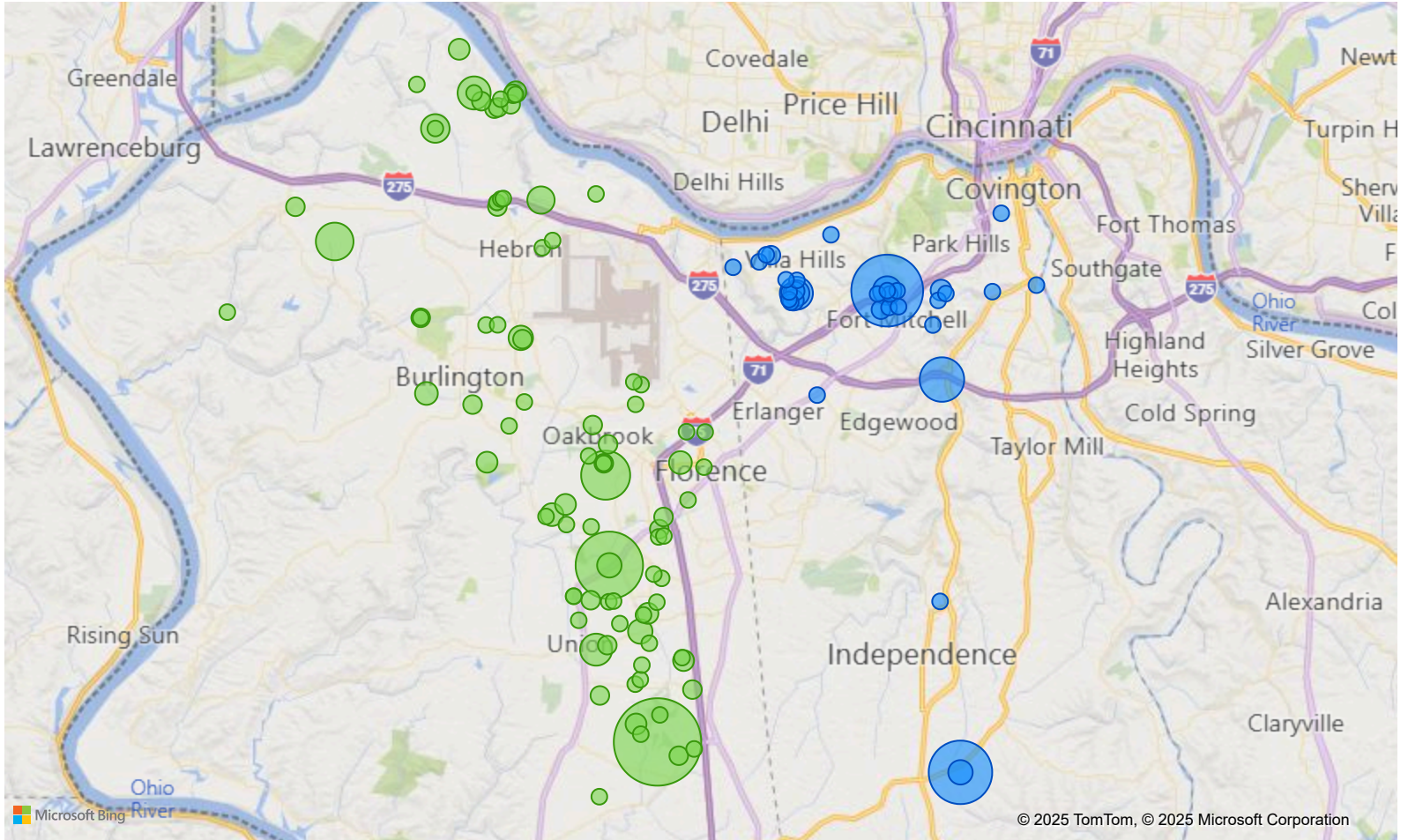


Kentucky Noise Capture

Complaint Count by County

Reported Locations

● Boone County ● Fayette County ● Grant County ● Kenton County



Fayette County		
City	Total Located Complaints	%GT Total ...
Lexington	1	100.00%

The inquiry listed above was a property/development document request.

Boone County		
City	Total Located Complaints	%
Union	173	40.42%
Florence	146	34.11%
Hebron	57	13.32%
Burlington	44	10.28%
Walton	6	1.40%
Petersburg	1	0.23%
Verona	1	0.23%

Kenton County		
City	Total Located Complaints	%
Fort Mitchell	98	41.70%
Independence	67	28.51%
Edgewood	27	11.49%
Villa Hills	25	10.64%
Crescent Springs	8	3.40%
Fort Wright	5	2.13%
Covington	3	1.28%
Erlanger	1	0.43%
Morning View	1	0.43%

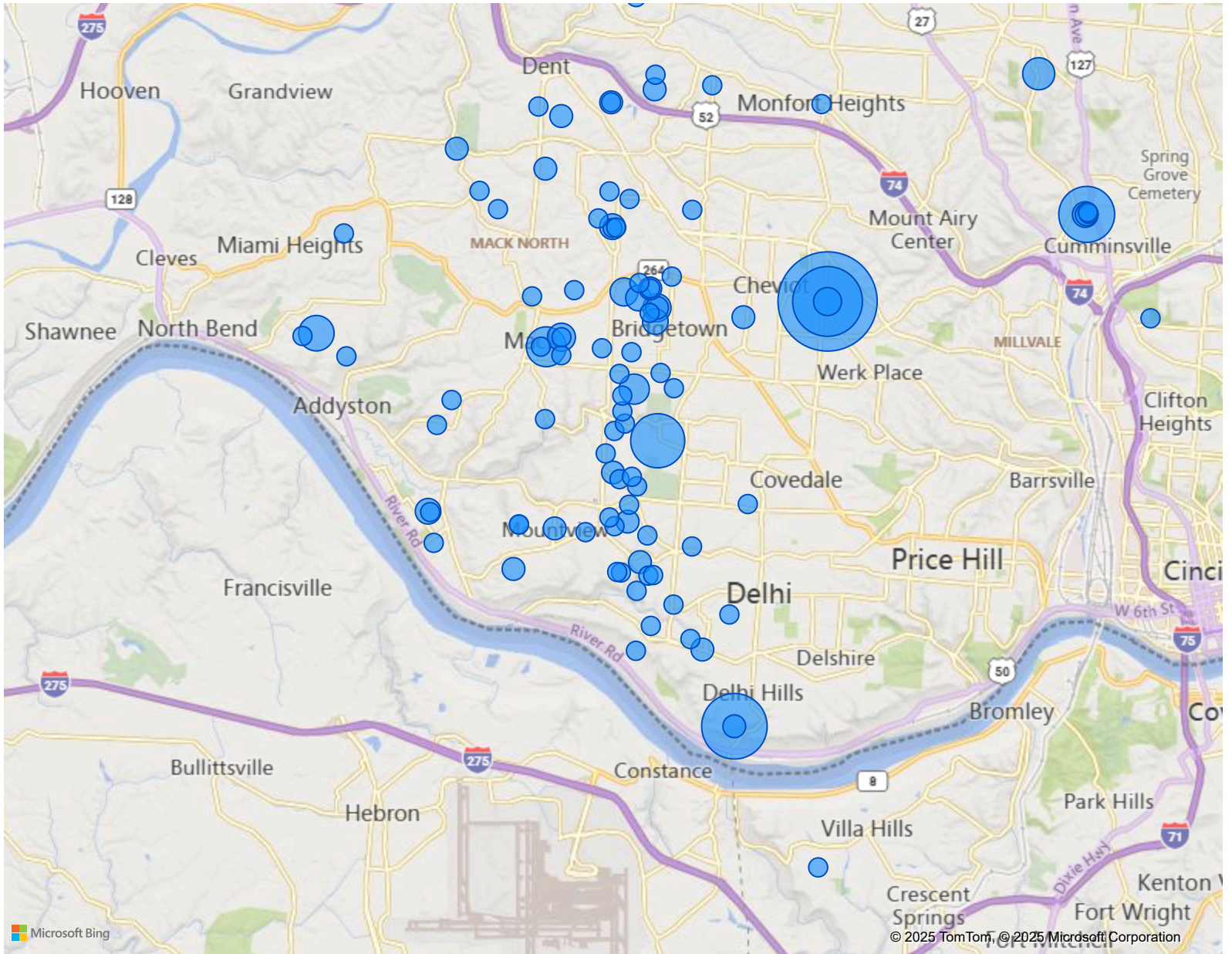
Grant County		
City	Total Located Complaints	%
Crittenden	4	100.00%

Ohio & Indiana Noise Capture

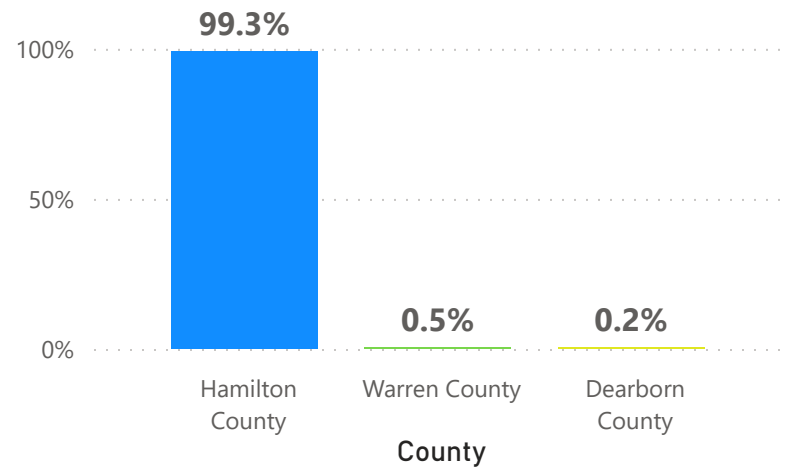
Complaint Count by County

Reported Locations

● Dearborn County ● Hamilton County ● Warren County



Hamilton County		
City	Total Located Complaints	%
Cincinnati	387	94.85%
North Bend	10	2.45%
Cleves	3	0.74%
Green Township	3	0.74%
Cheviot	2	0.49%
Harrison	2	0.49%
Madeira	1	0.25%



Warren County		
City	Total Located Complaints	%
Morrow	1	50.00%
Pleasant Plain	1	50.00%

Dearborn County INDIANA		
City	Total Located Complaints	%
Lawrenceburg	1	100.00%

Operational Impacts & Closure Summary

See all construction related activities, taxiway closures, and operational changes that can impact the surrounding communities in 2024.

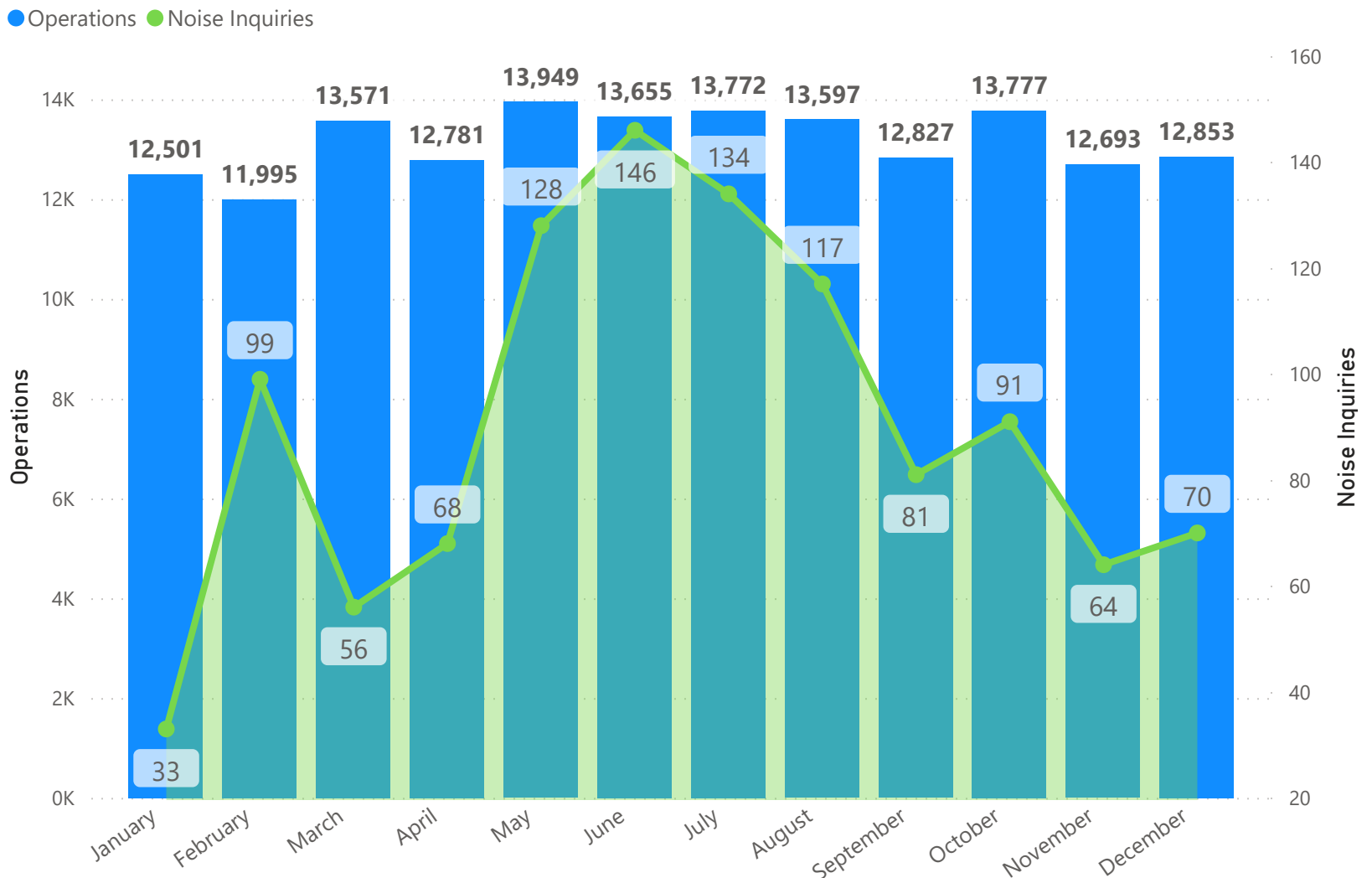
Runway Closures

On June 17th 2024, the Runway 18L/36R grading project commenced and concluded in late July. Upon completion of this project, Runway 18C/36C and its associated taxiways were closed for rehabilitation until December 2024.

These consecutive closures resulted in a higher utilization of the Runway 9/27 and other north/south runways. Advance notification and public notice was provided on our noise abatement page, email messaging, and noise line voice messaging.

Passenger & Cargo Operations

In 2024, CVG welcomed 9.2 million passengers, with a total of 157,971 aircraft operations. CVG is one of the top 20 largest cargo airports in the world. As a result of passenger activity, cargo throughput, capital investments by the airport and tenants, and induced visitor spending in the region, CVG has an annual economic impact of \$9.3 billion.



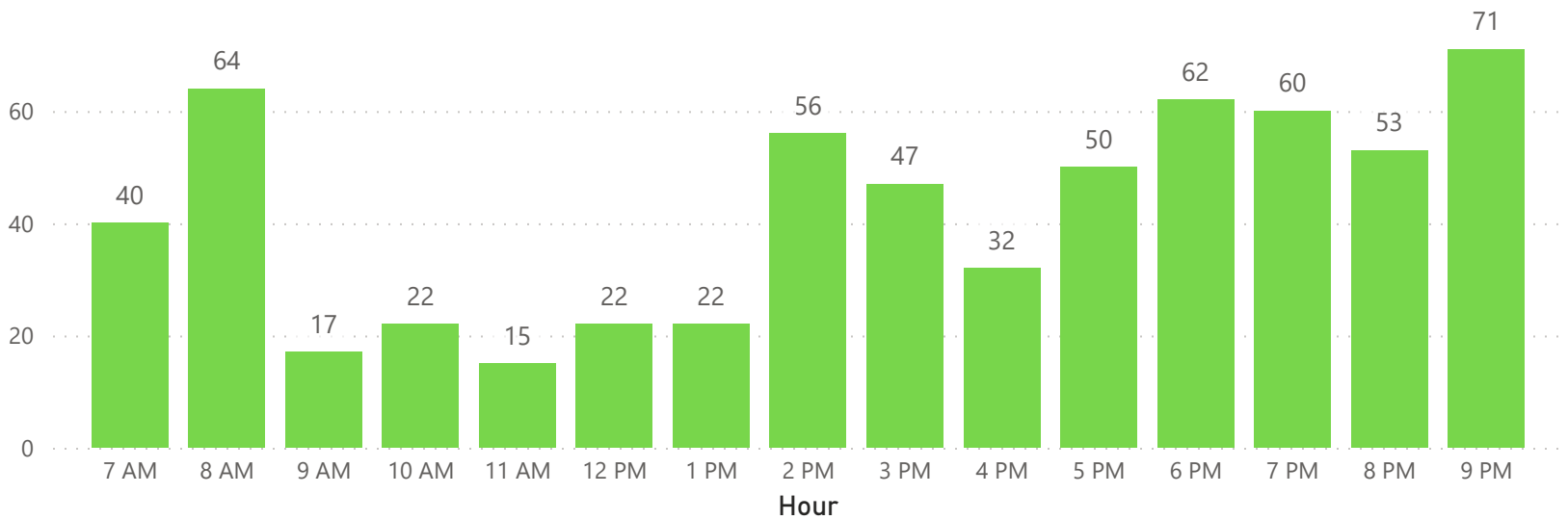
2024 Hourly Insight

Hourly insight providing the count of complaints reported by time of noise event.

Daytime Complaints

7am - 10pm

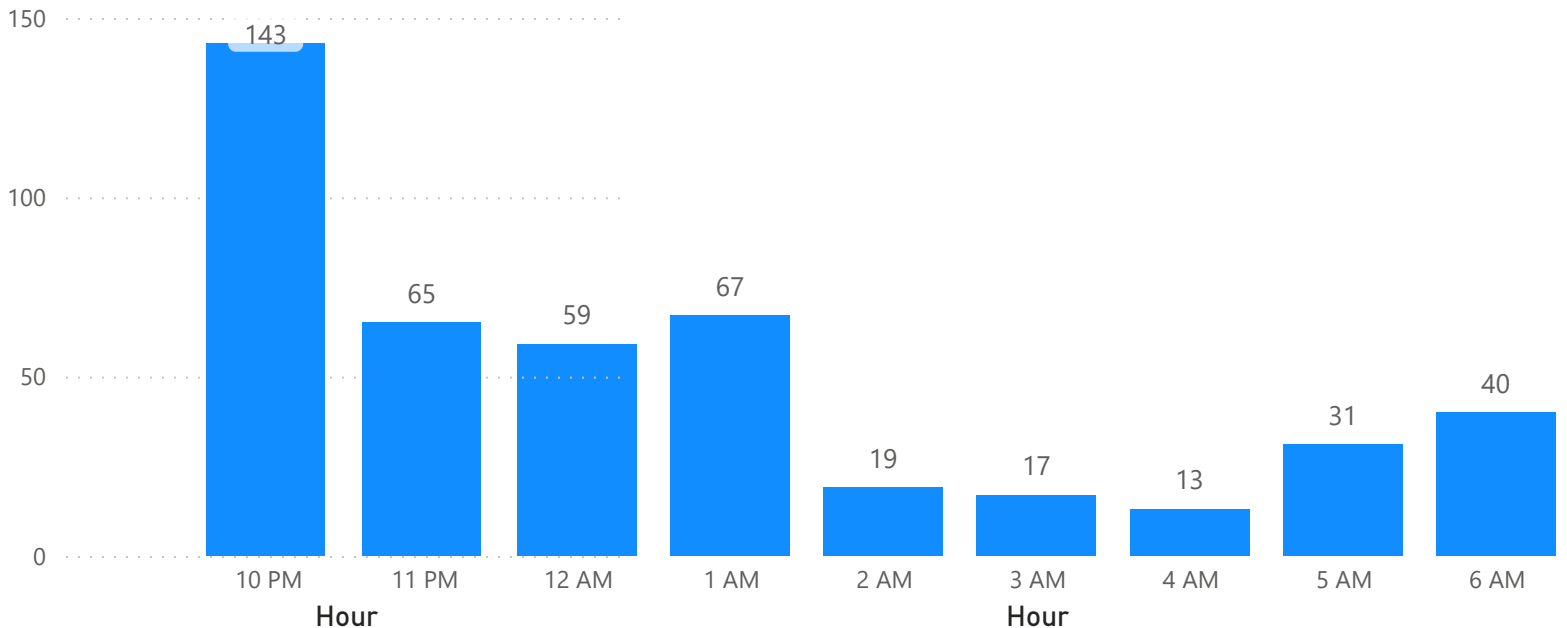
Aircraft takeoff and land into the wind. Based on historical south/southwest wind conditions at CVG, approximately 80% of the time aircraft land over the north (south flow) and takeoff to the south and west. North winds and poor weather conditions require north operations (takeoff to the north and west and land over the south), which is approximately 20% of the time.



Nighttime Complaints

10 pm - 7am

The nighttime runway use program was established to focus the majority of nighttime traffic over the west side of the airport (arrivals to Runway 9 over the west and departures from Runway 27 to the west). The center north/south runway (Runway 18C/36C) is designated as the alternate nighttime runway.



Event Type & Contact Method

Insight on reported event type, contact method, and request of response throughout 2024.

Reported Event Type

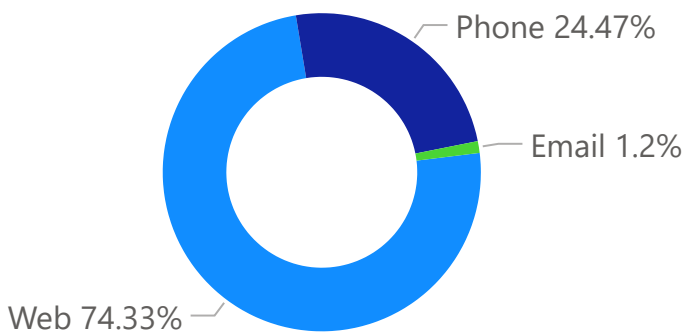
All noise concerns are categorized into the following event types for annual reporting.
New event types are now available for 2024 annual reporting.

Event Type		% Reported
Low & Loud Aircraft	547	50.32%
Loud Aircraft	307	28.24%
Vibrations	53	4.88%
Frequent	50	4.60%
Low Aircraft	49	4.51%
Off Path	41	3.77%
Operational Cadence	22	2.02%
Runway Closure & Construction Inquiry	5	0.46%
Property/Development Document Request	4	0.37%
Safety Concerns	3	0.28%
Unusual Flight Behavior	3	0.28%
Location Inquiry	2	0.18%
Helicopter	1	0.09%

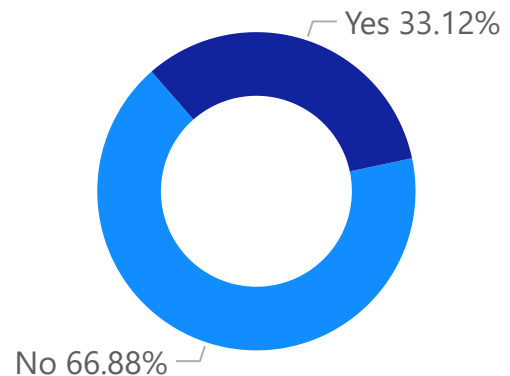
Contact Methods

Noise related concerns and complaints are submitted to the Noise Abatement Team by email, phone, and online via contact form. See proportion of used communication channels utilized below:

Reported Contact Method



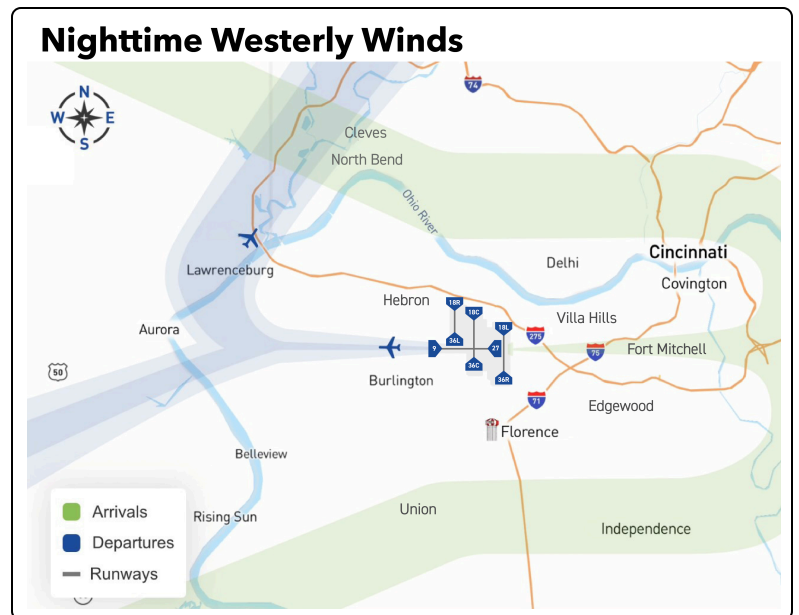
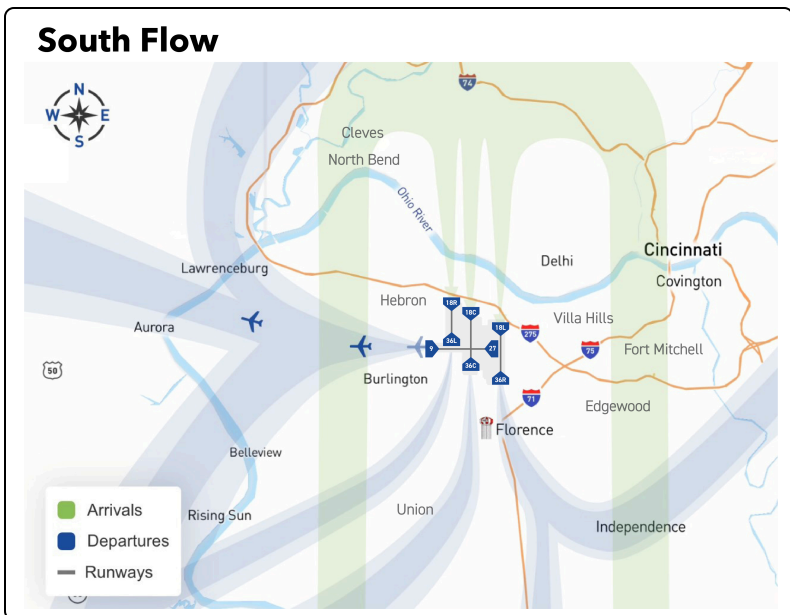
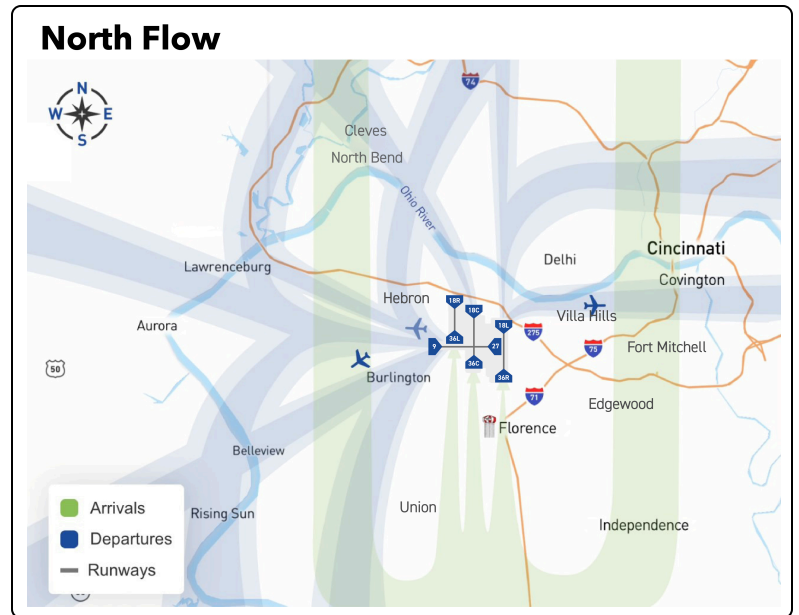
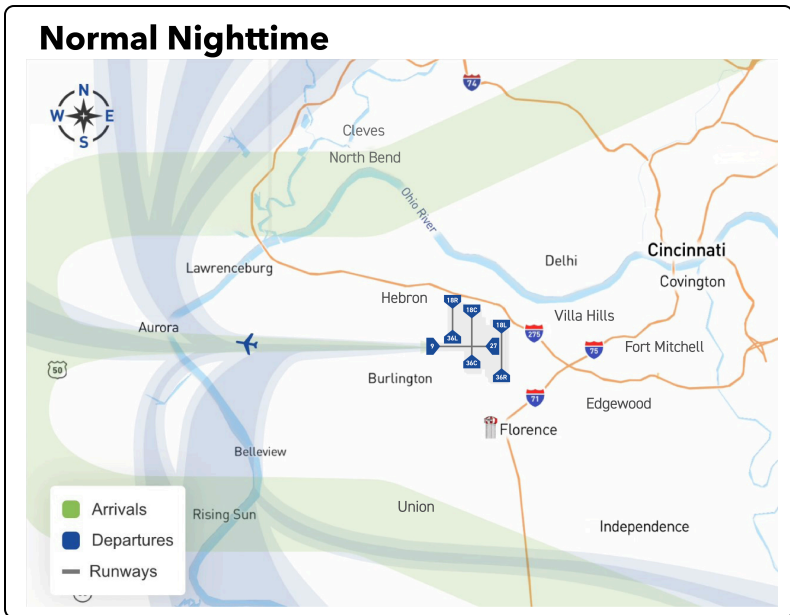
Response Request Rate



2024 Runway Utilization

Departure Utilization		
Runway	Count	Utilization
27	50,832	64.48%
18L	13,944	17.69%
36R	9,061	11.49%
36C	3,489	4.43%
18C	1,204	1.53%
9	193	0.24%
36L	83	0.11%
18R	24	0.03%

Arrival Utilization		
Runway	Count	Utilization
18L	22,040	27.94%
36R	19,812	25.12%
18C	13,552	17.18%
27	10,015	12.70%
9	7,172	9.09%
36C	5,923	7.51%
18R	319	0.40%
36L	48	0.06%



Frequent Complainants Overview

Annually, 'frequent' complainants submit 10 or more total complaints. In total, the frequent complainants below were responsible for 63.66% (692) of all complaints submitted in 2024.

See generalized location, runway impact, and complaint count below:

	City	County	Complaint Count	% of Total Complaints
1	Cincinnati	Hamilton County	142	13.06%
2	Union	Boone County	126	11.59%
3	Fort Mitchell	Kenton County	66	6.07%
4	Independence	Kenton County	65	5.98%
5	Florence	Boone County	58	5.34%
6	Cincinnati	Hamilton County	40	3.68%
7	Florence	Boone County	33	3.04%
8	Edgewood	Kenton County	26	2.39%
9	Cincinnati	Hamilton County	24	2.21%
10	Fort Mitchell	Kenton County	22	2.02%
11	Villa Hills	Kenton County	18	1.66%
12	Florence	Boone County	17	1.56%
13	Burlington	Boone County	17	1.56%
14	Cincinnati	Hamilton County	14	1.29%
15	Hebron	Boone County	13	1.20%
16	Union	Boone County	11	1.01%

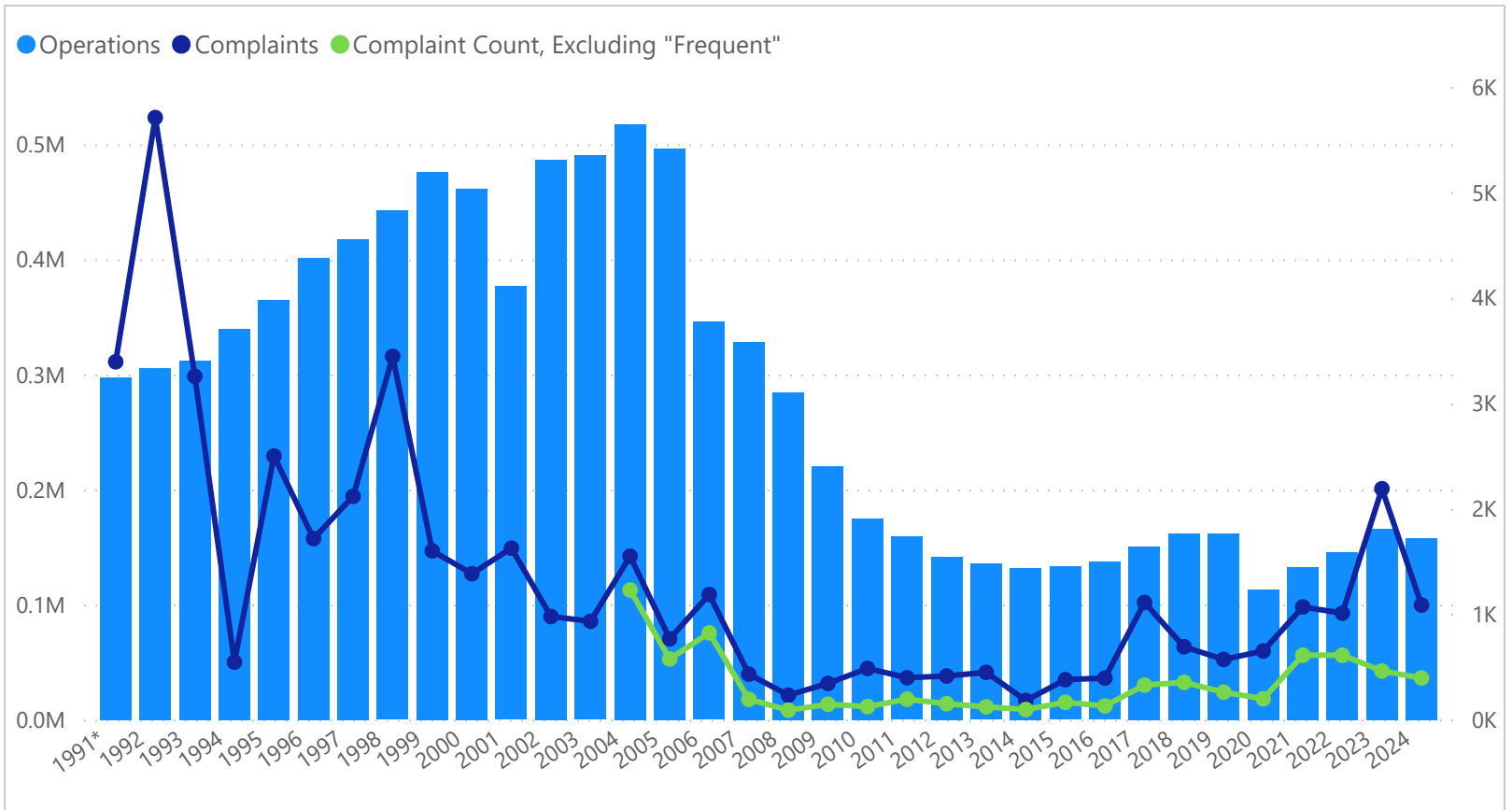
2024 Complainant Count **255**

2024 Submitted Complaints **1,087**

Historical Operation & Complaint Counts

Year	Complaints	Operations
1991*	3,393	297,425
* Total complaints included September - December, 1991		
1992	5,709	305,544
1993	3,256	312,204
1994	546	339,839
1995	2,500	365,114
1996	1,717	401,367
1997	2,118	417,391
1998	3,444	442,276
* 1,845 complaints were made by one complainant		
1999	1,601	476,128
2000	1,384	461,454
2001	1,626	376,744
2002	978	486,501
2003	933	490,284
2004	1,550	517,520
2005	767	496,366
2006	1,187	345,754
2007	432	328,069
2008	232	284,487

Year	Complaints	Operations
2009	344	220,323
2010	486	174,982
2011	398	159,060
2012	414	141,372
2013	449	135,492
2014	182	131,695
2015	379	133,068
2016	395	137,225
2017	1,111	150,463
* 546 complaints were made by one complainant		
2018	691	161,672
2019	571	162,106
2020	651	113,377
2021	1,069	132,867
* Increase related to RWY 9/27 closure		
2022	1,010	145,606
* Increase related to RWY 9/27 closure		
2023	2,190	165,739
* 940 complaints were made by one complainant		
2024	1,087	157,971
* Increase related to RWY 18/36C & RWY 18L/36R closure		



2024 Recorded DNL Levels

Sisters of Charity Quarterly Monitoring

The Cincinnati/Northern Kentucky International Airport conducts quarterly noise monitoring at the Sisters of Charity campus in Delhi Township, Ohio to ensure the average day-night noise level (DNL) remains at or below 62 DNL during normal operations.

Monitoring Period	Average DNL
Quarter 1	56.9
Quarter 2	55.9
Quarter 3	59.1
Quarter 4	62.5*

**The fourth quarter of 2024 resulted in a slight exceedance due to the construction closure of Runway 18C/36C (not normal operations). The construction closure concluded on December 13, 2024.*

