

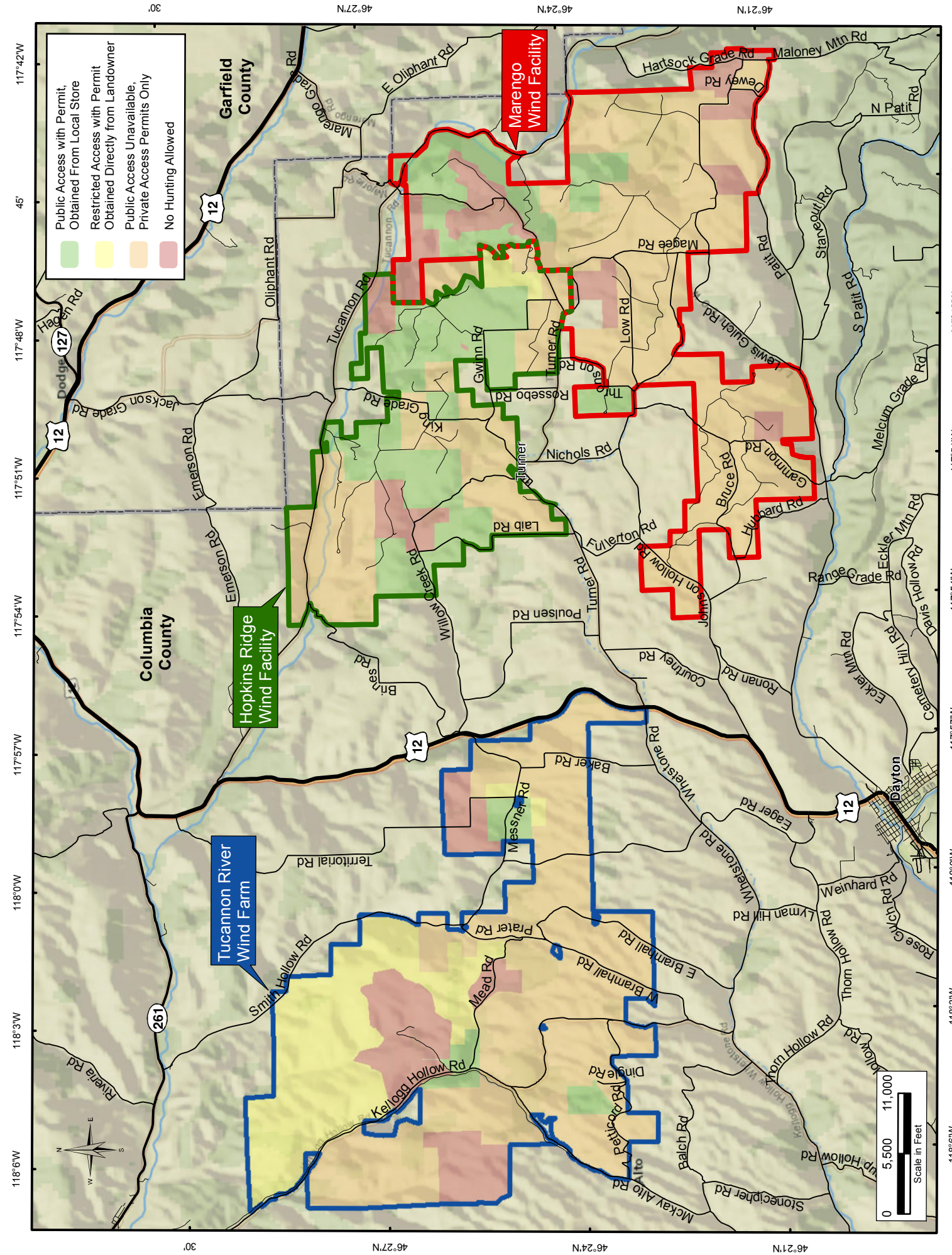
Access rules

Tucannon River Wind Farm, Hopkins Ridge Wind Facility & Marengo Wind Facility

Violation of any of the rules that follow will result in loss of all access privileges and possible trespassing violations.

1. No hunting during wind turbine construction periods or posted closure periods.
2. No access of any kind within 300 feet (100 yards) of the wind turbines, buildings or substations.
3. No access of any kind within 1,000 feet (333 yards) of the wind turbines from the 3rd Sunday of November through the 3rd Sunday of February due to potential icing conditions.
4. No pointing or shooting of any weapon at a target of any kind with people, wind turbines, overhead power lines, splice boxes, junction boxes, maintenance vehicles, signs, poles, fences, gates, maintenance facilities or substation in your scope of view. No shooting from vehicles, across roads or from any maintained portion of wind facility access roads.
5. No vehicle traffic of any kind on lessors' property except on county roads unless authorized in writing by lessor. Driving on wind turbine access roads is not allowed. This includes operation of off-road vehicles (ORVs) or all-terrain vehicles (ATVs).
6. No horses or pack animals are allowed on lessors' property unless previously authorized in writing by lessor.
7. Do not block access gates or entrances.
8. All hunters must abide by Washington state game rules and regulations.
9. All access may be canceled on lessors' land whenever it is deemed necessary by lessors or lessees.
10. No overnight camping/parking or outdoor fires on lessors' property unless previously authorized in writing by lessor.
11. Hanging vehicle tags must be clearly displayed and visible from outside of the vehicle while accessing lessors' property.
12. Your access permission agreement must be carried with you at all times while accessing the Portland General Electric Tucannon River, Puget Sound Energy Hopkins Ridge or PacifiCorp Marengo wind facility areas.
13. Please remove gut piles to prevent attracting scavenging raptors to the wind farm area.

To help assure continued access to these lands, please report any violations of rules or laws to the Columbia County Sheriff's Office **509-382-1100** or if an emergency, please dial **911**.



Tucannon River Wind Farm

Access rules and maps

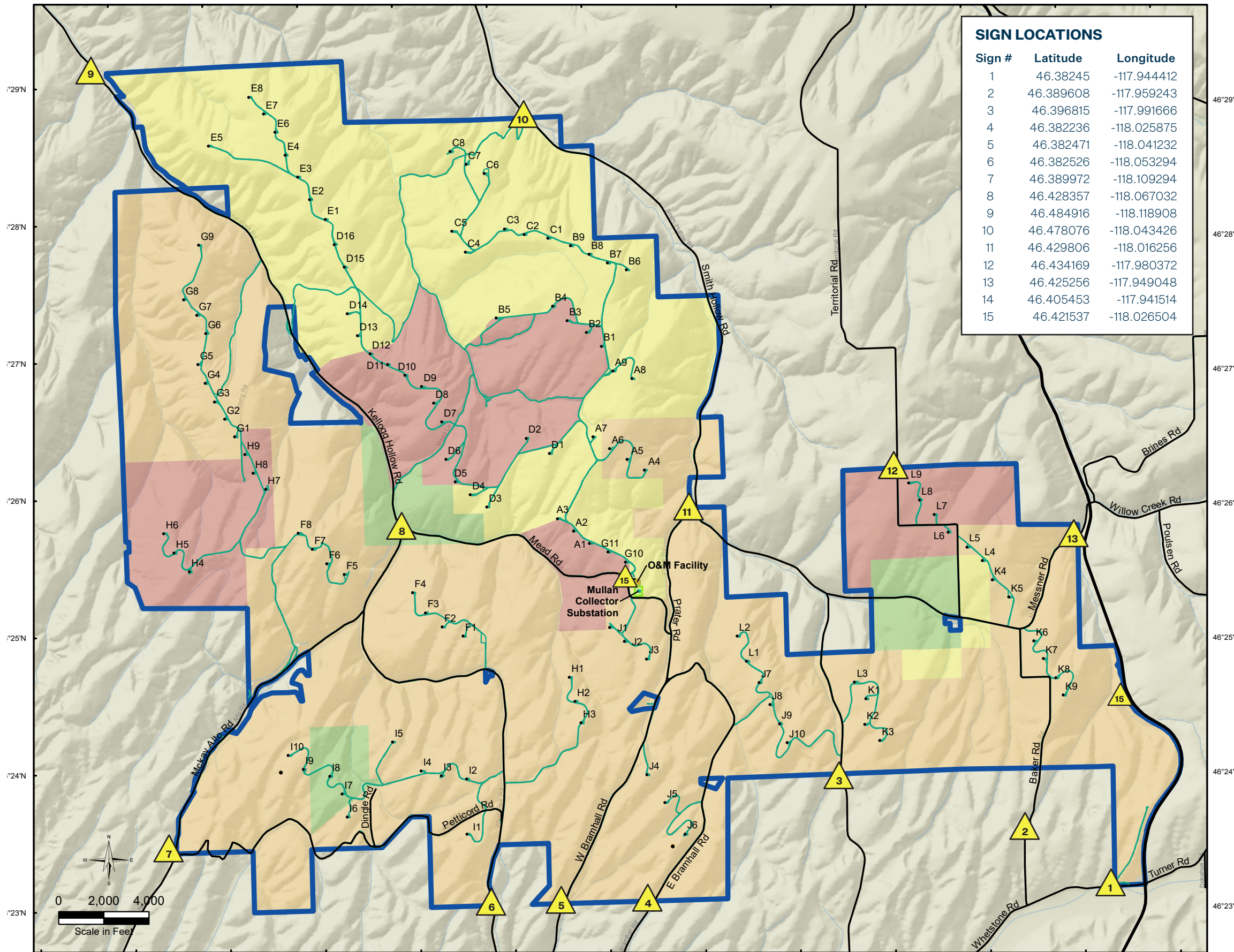
Portland General Electric's Tucannon River Wind Farm is located on 20,000 acres of farm and rangeland north of Dayton, WA. The project's 116 wind turbines are located on private property PGE leases from landowners.

While some of this land is open to public access, special rules are in place to ensure the safety of visitors, hunters, local residents and wind farm workers. The enclosed rules are also designed to prevent damage to the wind farm's equipment.



Tucannon River Wind Farm

Access map

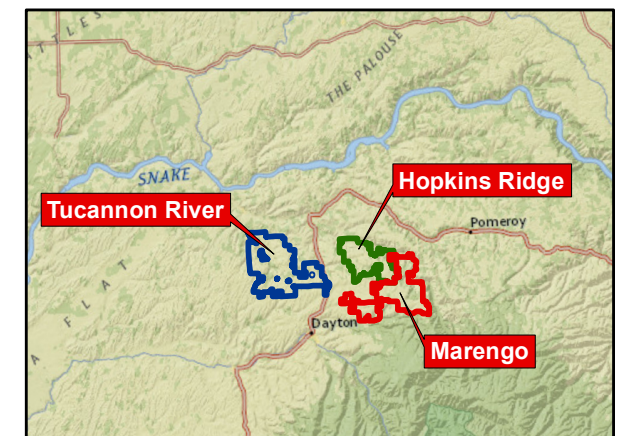


Sign #	Latitude	Longitude
1	46.38245	-117.944412
2	46.389608	-117.959243
3	46.396815	-117.991666
4	46.382236	-118.025875
5	46.382471	-118.041232
6	46.382526	-118.053294
7	46.389972	-118.109294
8	46.428357	-118.067032
9	46.484916	-118.118908
10	46.478076	-118.043426
11	46.429806	-118.016256
12	46.434169	-117.980372
13	46.425256	-117.949048
14	46.405453	-117.941514
15	46.421537	-118.026504

Tucannon River Wind Farm Recreational access map

Map features

- Public access with permit, obtained from local store
- Restricted access with permit obtained directly from landowner
- Public access unavailable, private access permits only
- No hunting allowed
- Access sign
- Wind turbine
- Met tower
- Turbine access road
- TRWF project boundary



For additional information, visit portlandgeneral.com/tucannon or contact PGE's Parks and Recreation office at **503-464-8515**.