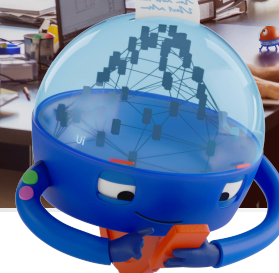


# Automating Application Testing for the Insurance Industry with **UiPath Test Suite**



**UiPath has made it easier than ever for insurance carriers, underwriters, brokers, and agents to fully maximize their enterprise automation capabilities. Building on its status as a leader in process automation, UiPath consistently looks for ways to help insurance customers transform their organizations—including automating the testing process with UiPath Test Suite.**

In the insurance industry, IT teams spend an average of 30% to 40% of their budgets maintaining and testing legacy applications. Additionally, over 68% of testing efforts are devoted to some form of manual testing, which can be time-consuming and error-prone. While insurers recognize the benefits of test automation, they're faced with multiple challenges: complex systems with numerous business rules and interactions between different systems, legacy systems without the necessary APIs or user interfaces to support test automation, and stringent compliance requirements regarding data privacy and security. Current legacy testing solutions can be difficult to automate and many automated testing tools have a low ROI because teams commonly use them only once during migration or upgrade projects.

Enter UiPath Test Suite, the resilient automated testing solution powered by the UiPath Business Automation Platform. UiPath Test Suite can help insurance organizations improve the quality and security of their services through automation-led testing. With the end-to-end UiPath Business Automation Platform, insurance companies can ensure that their applications follow regulations and accurately process customer data. UiPath customers have reduced test cycles by as much as 50%, improved automated test coverage by two to three times, and reduced overhead costs by up to 30%. The UiPath Platform is also purpose-built for enterprise automation. It features reusable component libraries that organizations can share across test, IT, and business process automation teams.

An easy-to-learn, low-code approach empowers testers to create their own test automations, which frees up application developers for other mission-critical work. UiPath Test Suite also integrates seamlessly with your existing testing tool landscape and can interact with any type of application. These capabilities allow you to test full-scale end-to-end processes across legacy applications, desktop applications, modern browser applications, and chatbots.

**Now's the time to  
accelerate your digital  
transformation with  
automated testing**

**40%**

of a typical insurers' IT budget is  
allocated to maintaining and testing  
legacy applications

**68%**

of insurance companies still depend  
on some form of manual testing due to  
legacy systems

**62%**

of insurance professionals identified  
"lack of testing skills" as a key  
challenge in testing

# What makes UiPath different?



## A unified testing tool for all your insurance systems

The application landscape of an insurance company can be complex and multifaceted with numerous systems and applications that support different business functions such as underwriting, claims management, policy administration, and billing. Additionally, with the increasing focus on digitalization and customer experience, insurance companies are adopting new technologies and channels, such as mobile apps, chatbots, and social media, which further expand the application landscape. Whether you leverage full application suites like Guidewire, Duck Creek, or Oracle Insurance, or have a home-grown custom solution, the UiPath Platform can automate and test them all. It supports more than 190 different UI and API technologies with a single workflow designer that doesn't require programming skills. By combining native integrations with flexible API consumption and industry-leading user interface automation capabilities, UiPath Test Suite can test a virtually limitless set of target applications.



## UiPath automation capabilities for transforming chatbot interactions

UiPath Test Suite provides comprehensive automation capabilities for testing the conversation flows of chatbots. Users can create test cases that accurately reflect different conversation scenarios and test them with ease. UiPath Test Robots can interact with chatbots using natural language processing (NLP) techniques to validate chatbot responses and confirm that they meet user expectations, intents, and sentiments. By leveraging UiPath automation technology for chatbot testing, insurance companies can ensure that their chatbots deliver high-quality, accurate, and secure insurance services to their customers.



## Synthetic test data that mirrors real-world scenarios

Insurance companies must manage data from multiple sources, including internal systems, partner systems, and third-party data providers. The UiPath Platform uses advanced automation technologies to extract, transform, and load data from various sources. Additionally, data can be synthetically generated to ensure customer privacy and compliance with industry regulations. Organizations can then leverage process automation to update test environments with this data. Plus, data-driven testing with UiPath Test Suite allows test robots to consume the data dynamically to test multiple scenarios at scale.



## Modernize your legacy insurance systems with confidence, speed, and precision

Many insurance companies are looking to modernize their tech stack by migrating from on-premises legacy and mainframe applications to cloud-based applications. This shift to cloud-based applications offers increased scalability, flexibility, and security, as well as improved cost-efficiency. However, the process of migrating to the cloud can be complex and expensive, requiring significant investment in time, resources, and expertise.

With UiPath Test Suite, insurance companies can automate functional, performance, and regression testing to ensure that their systems work as expected. The UiPath terminal activity package allows users to easily interact with AS/400, mainframe, and green screen applications via terminal emulation. UiPath can also automate data migration tasks, reducing the risk of errors and ensuring sensitive customer and claims data is migrated accurately. Additionally, UiPath can optimize workflows related to change management, project management, and reporting, streamlining the project and reducing costs for insurance companies.

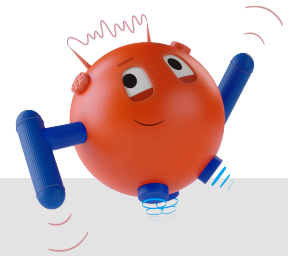


## Guarantee compliance with confidence

Both application compliance and customer centricity are crucial for insurance companies, and they're often intertwined. Insurers must follow various regulations and industry standards to ensure they operate within legal and ethical boundaries. Simultaneously, they must also focus on customer centricity to remain competitive, attract, and keep clients.

Achieving this balance requires insurance applications to innovate and add features at a fast pace. However, software upgrades, new features, and quick turnaround times require even faster testing timelines. The UiPath Platform can help address these challenges by ensuring regulatory compliance, improving accuracy, and reducing fraud and abuse. Automating testing with UiPath Test Suite can enable insurers to provide high-quality, precise, and secure insurance services to their customers.

# UiPath Test Suite is part of a converged automation platform



## UiPath Business Automation Platform



**Discover**  
Process and Task Mining



**Automate**  
Test Automation



**Operate**  
Orchestration



**Manage**  
Test Management



**Business Process Automation**



**Run**  
Test, Attended, and Unattended Robots

### End-to-End UI and API Automation

Automation Cloud



Hybrid



On-premises



 **GUIDEWIRE**



**Duck Creek Technologies**

**ORACLE®**  
Insurance

**3-5x**

**Automation Development**

**90%**

**Automation Rates**

**3x**

**Faster Release Speed**

**70%**

**Component Reuse**

**30-40%**

**Cost Reduction**



For more details, please visit us at:

<https://www.uipath.com/solutions/industry/insurance-automation>

**UiPath** The Foundation of Innovation™