



Three products, one goal

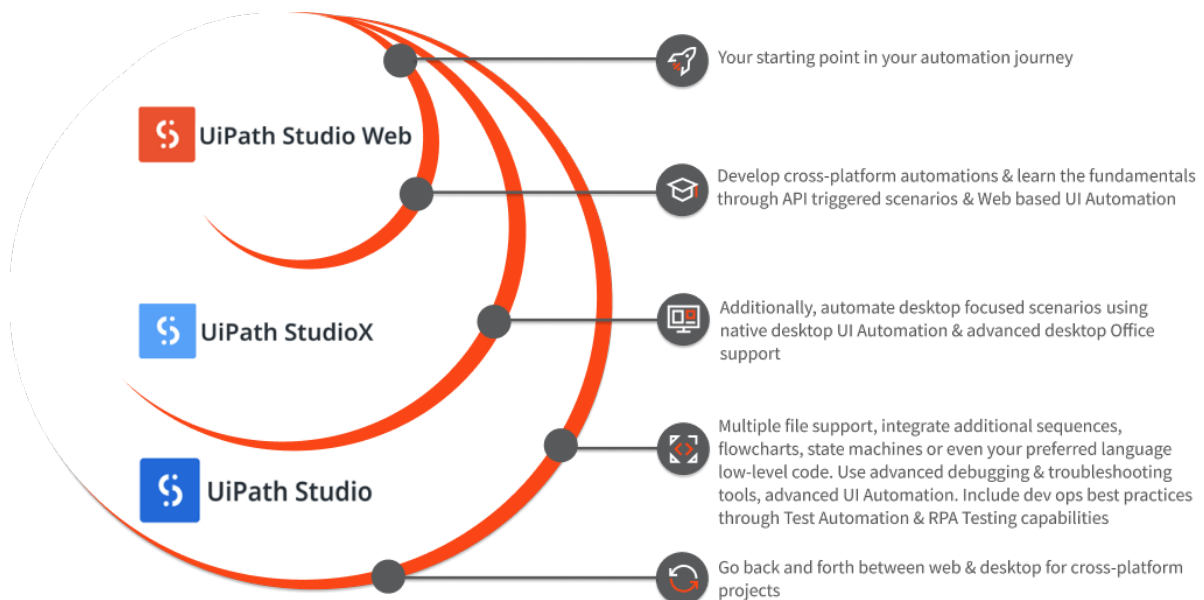
With a shared foundation and dedicated activity packages for different coding skills, the Studio family of products offers everyone the ability to build their own robot.

Quickly start in **Studio Web** as your Web based automation canvas and build and test Cross-platform automations across online apps and services.

Switch to **StudioX** to automate repetitive tasks across online applications and desktop native applications. Caters for native desktop apps scenarios in addition to what Studio Web already provides.

Ultimately move your project into **Studio** as it's the complete solution for automating complex business processes, with advanced UI Automation, intuitive error handling and robust debugging tools. Includes support for rich reusable components, RPA test cases, Test Automation, flow charts and state machines.

This journey is a continuum, allowing you to go back & forth between Studio Web, StudioX and Studio, adapting to your automation needs.



Why UiPath Studio?

Rich ecosystem for activities

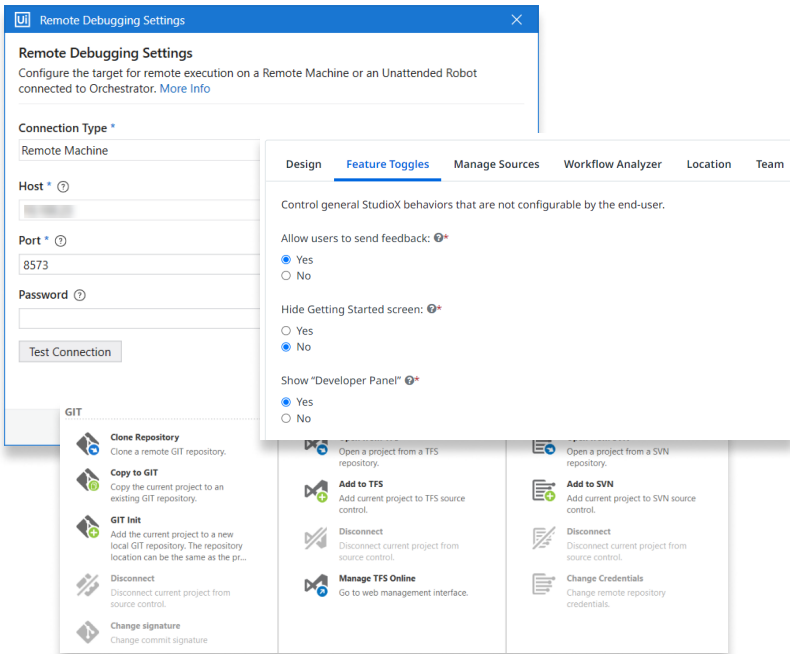
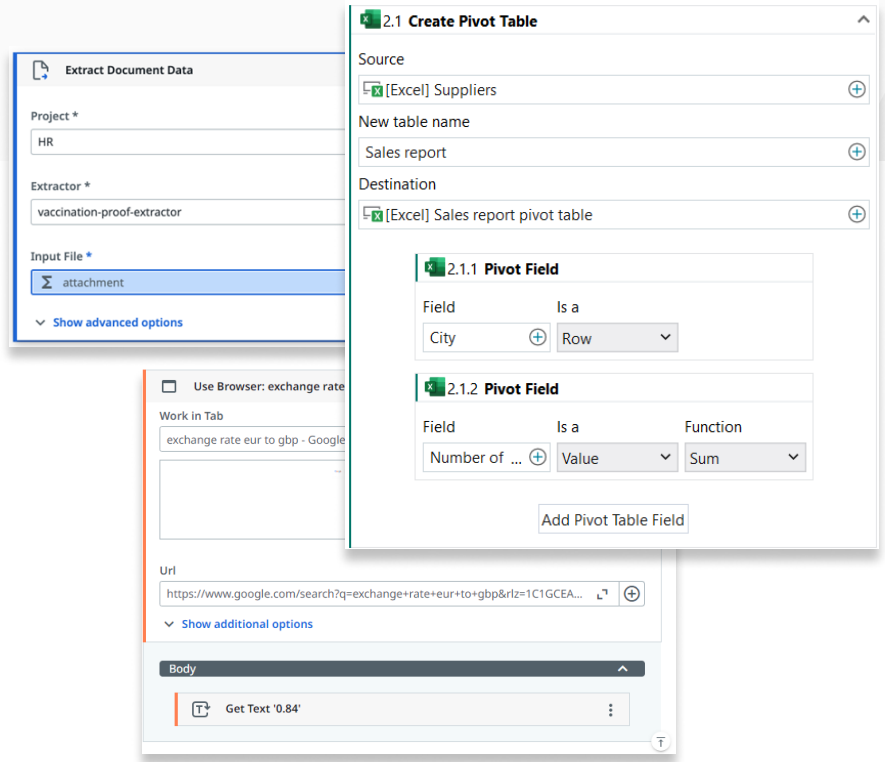
Automate a varied range of use cases, from extracting document data, IT focused automations to productivity tools (Office 365, Google Workspace, Slack, etc.)

Automate any User Interface

Automate any desktop or web application you work with by using selectors, recorder, computer vision or image identification.

Continuum journey between Desktop and Web

Easily navigate from web to Desktop through a couple of clicks. Started your work in Studio Web? Continue in Studio Desktop and add Desktop focused activities.



Test Automation

Create & maintain test cases for RPA and application testing.

Extensibility

Build your own custom activities or create reusable elements through Libraries.

Find the right learning path

Join our community on forum.uipath.com or check out our tutorials, demos as well as training programs to upgrade your skill level.

Advanced debugging

Ensure quality code through extensive debugging tools and logging.

Source control

Integrate with Git, TFS, VSTS, and SVN for better collaboration in teams.

Governance

Configure and deploy governance policies that offer control over various functionalities (packages, Workflow Analyzer rules).

Cross-platform

Configure and deploy governance policies that offer control over various functionalities (packages, Workflow Analyzer rules).

