








Size

12in x 12in x 2in




Base Material

 Kraft or  White




Print Option

Outside Only



Color

1–4 Pantone Colors



Sustainability

Compostable, Recyclable,
FDA-Certified

Print perfect checklist

- 

Add your custom artwork to **your design here layer**.
- 

In order to ensure your custom packaging cuts correctly, it is very important that the unique structural dieline we send you is included as part of the print file. Please **do not delete, rotate or change the colors** of the structural dieline.
- 

For full background design, make sure to extend your background to fill the bleed area to avoid a white border. We require **5mm** of bleed all around.
- 

We recommend using **1mm font size** or larger.
- 

Lines and stroke weight should be no less than **0.2mm** if reversed out.
- 

All artwork should be converted to **Coated or Uncoated Pantones**. Please take note that we can only print up to **4 Pantone colors** only.
- 

For best results, all artwork should be strictly **vectorized**.
- 

In order to ensure your custom pizza box prints correctly, we require that **all fonts be converted to outlines**.
- 

For optimal scanning, ensure **QR codes have high contrast** and measure **20x20mm or above**. Do not scale the QR code below a **minimum of 16x16mm**.

- 1

Download dieline

Ensure you have downloaded the correct sized dieline. Dielines can be found on the **noissue website**.

2

Complete your design

Use the Print Perfect Checklist as a guide to get the best print results. Export as **CMYK PDF**. No crop marks needed.

3

Upload artwork and order

Complete your order, upload your artwork and checkout. To guarantee print satisfaction, we'll review your file and send you a final proof to approve before going to print.

Connect your packaging

NEW

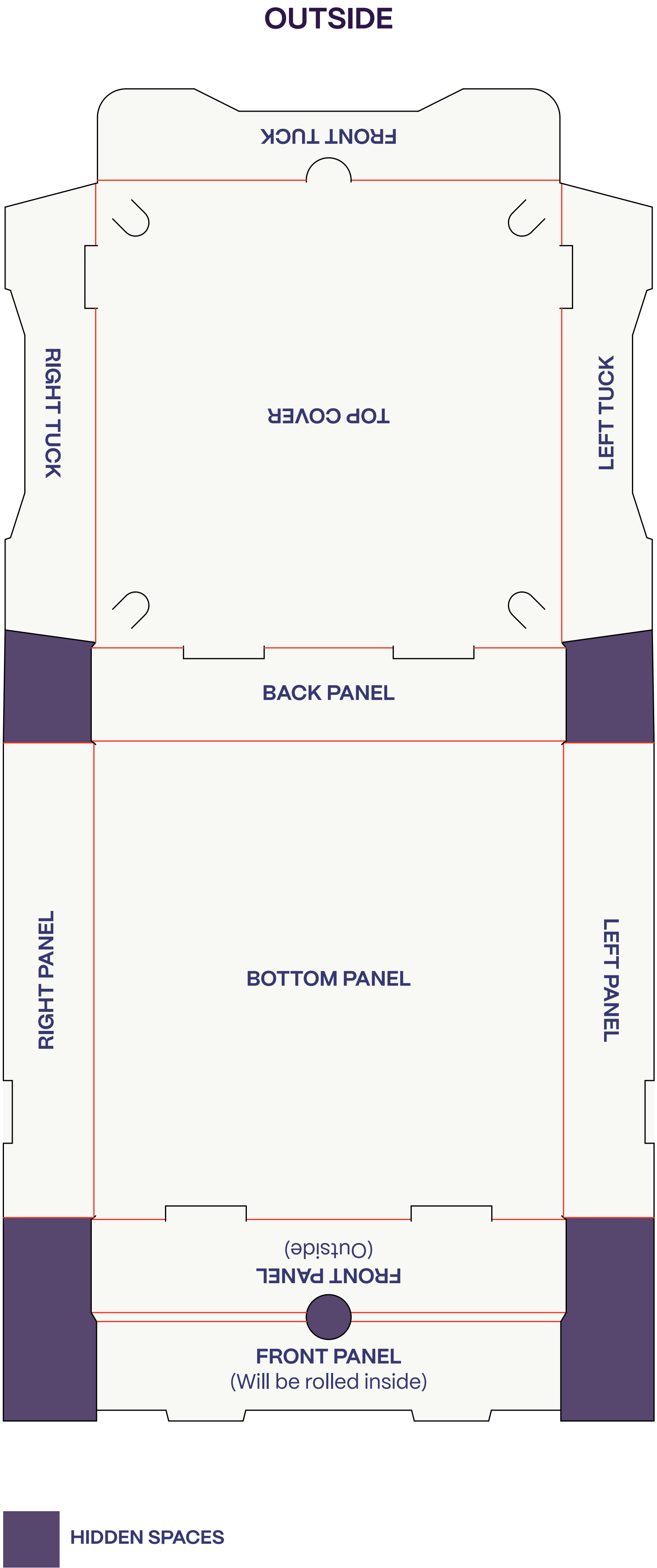
Tapkit by noissue

Add a Dynamic QR code to your packaging

Connect to anything and everyone with dynamic QR & microsites

Create QR Code (free) →

Custom Pizza Box – Orientation Guide



Size:

12" x 12" x 2"

Base Material:

☐ White

☐ Brown Kraft

Print Color:

☐ Insert Pantone Color

☐ Insert Pantone Color

☐ Insert Pantone Color

☐ Insert Pantone Color

Other Notes:

☒ None

LEGEND:

CUT LINE

FOLD

BLEED AREA

OUTSIDE

