



Size
8oz



Base Material
Kraft or White



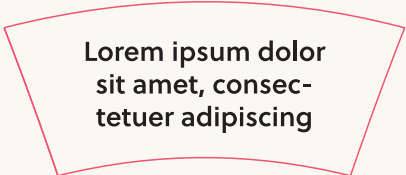
Color
Pantone or CMYK



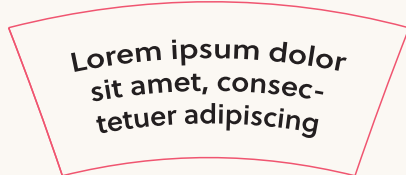
Sustainability
Recycle, FSC-Certified

Print perfect checklist

- ☐ Add your custom artwork to **your design here layer**.
- ☐ We recommend using **6pt font size (0.8mm height)** or larger.
- ☐ Thickness of lines, strokes and gaps should be **no less than 0.2mm**.
- ☐ For designs with lots of texts, we recommend to place the the text layout following the curve of the dieline. This ensures the texts will appear straight.



The texts will appear distorted when assembled.



The texts will appear more upright because it follows the curve.

- ☐ For best results, your design should be in **vector** format, but if an image will be used, it should be no less than **300 DPI**.
- ☐ In order to ensure your custom cup sleeve prints correctly, we require that **all fonts be converted to outlines**.
- ☐ For optimal scanning, ensure **QR codes have high contrast** and measure **20x20mm or above**. Do not scale the QR code below a **minimum of 16x16mm**.

1

Download dieline
Ensure you have downloaded the correct sized dieline. Dielines can be found on the **noissue website**.

2

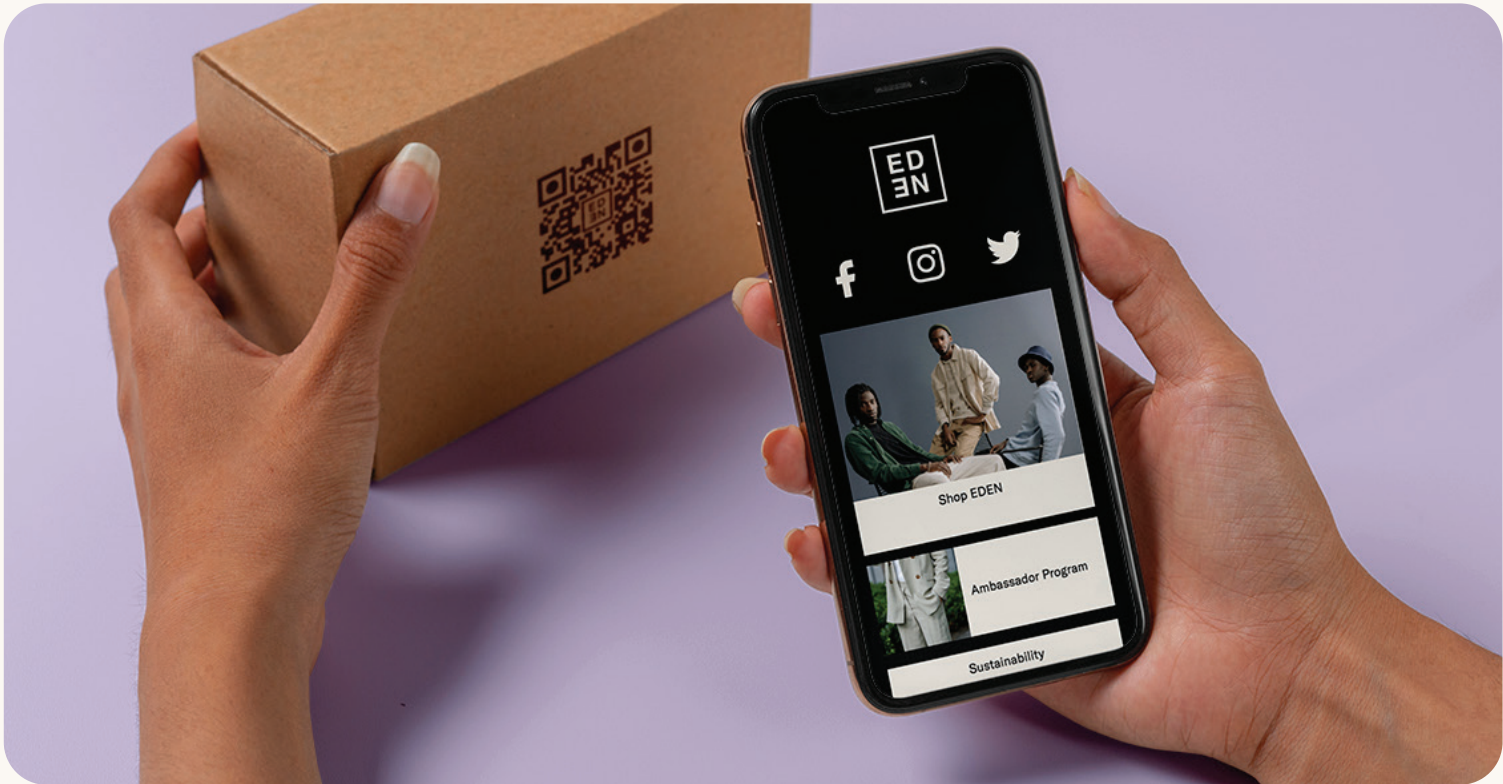
Complete your design
Use the Print Perfect Checklist as a guide to get the best print results. Export as **CMYK PDF**. No crop marks needed.

3

Upload artwork and order, or share with yourAccount Manager
Complete your order, upload your artwork and checkout. To guarantee print satisfaction, we'll review your file and send you a final proof to approve before going to print.

Connect your packaging

NEW



Tapkit by noissue

Add a Dynamic QR code to your packaging

Connect to anything and everyone with dynamic QR & microsites

Create QR Code (free) →

noissue.

Custom Cup Sleeves (8oz)



BASE MATERIAL

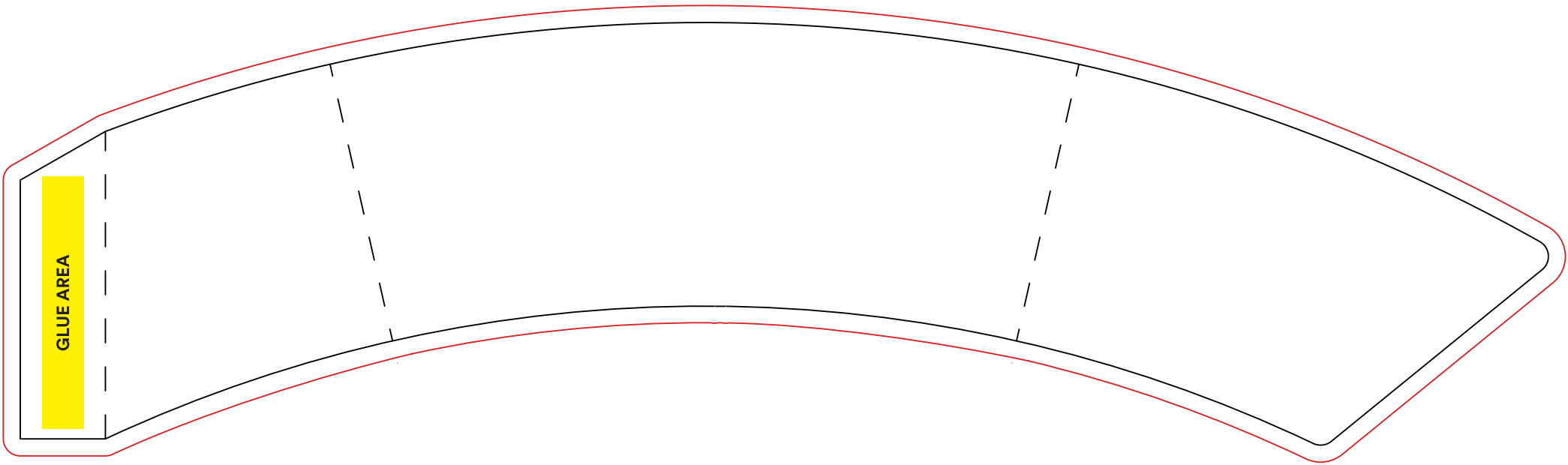
- ☒ White (Default)
- ☐ Brown Kraft

FINISH

- ☒ Matte (Default)
- ☐ Glossy

PRINT COLOR

- ☐ Pantone Color or CMYK
- ☐ Pantone Color or CMYK
- ☐ Pantone Color or CMYK
- ☐ Pantone Color or CMYK



— — —

FOLD

—————

CUT LINE

—————

BLEED AREA