



Size

254mm x 254mm x 127mm



Print Option

Inside and Outside



Color

Pantone or CMYK



Sustainability

Recyclable, FSC-Certified,
FDA-Compliant

Print perfect checklist

- Add your custom artwork to **your design here layer**.
- In order to ensure your custom packaging cuts correctly, it is very important that the unique structural dieline we send you is included as part of the print file. Please **do not delete, rotate or change the colors** of the structural dieline.
- Keep all important text and graphics within at least **0.125 inches (3 mm)** from the cutting line to avoid them being cut off during production.
- We recommend using **10 pt font size** or larger.
- Lines and stroke weight should be no less than **.5pt** and **1pt** if reversed out.
- For best results, all artwork should be vectored and image resolution should be **no less than 300 dpi**.
- In order to ensure your custom pastry box prints correctly, we require that **all fonts be converted to outlines**.
- For optimal scanning, ensure **QR codes have high contrast** and measure **20x20mm or above**. Do not scale the QR code below a **minimum of 16x16mm**.

- 1

Download dieline

Ensure you have downloaded the correct sized dieline. Dielines can be found on the **noissue website**.
- 2

Complete your design

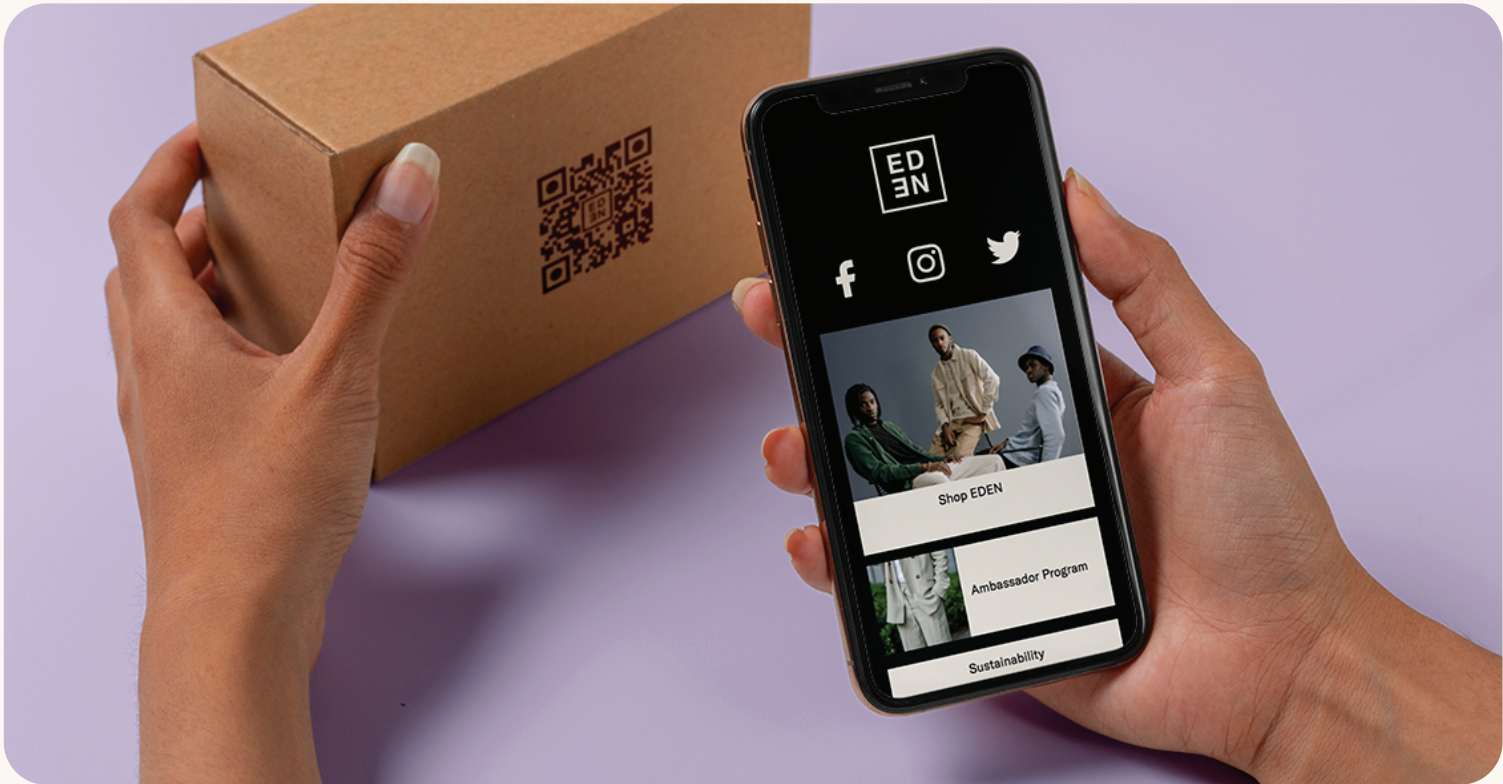
Use the Print Perfect Checklist as a guide to get the best print results. Export as **CMYK PDF**. No crop marks needed.
- 3

Upload artwork and order, or share with yourAccount Manager

Complete your order, upload your artwork and checkout. To guarantee print satisfaction, we'll review your file and send you a final proof to approve before going to print.

Connect your packaging

NEW



Tapkit by noissue

Add a Dynamic QR code to your packaging

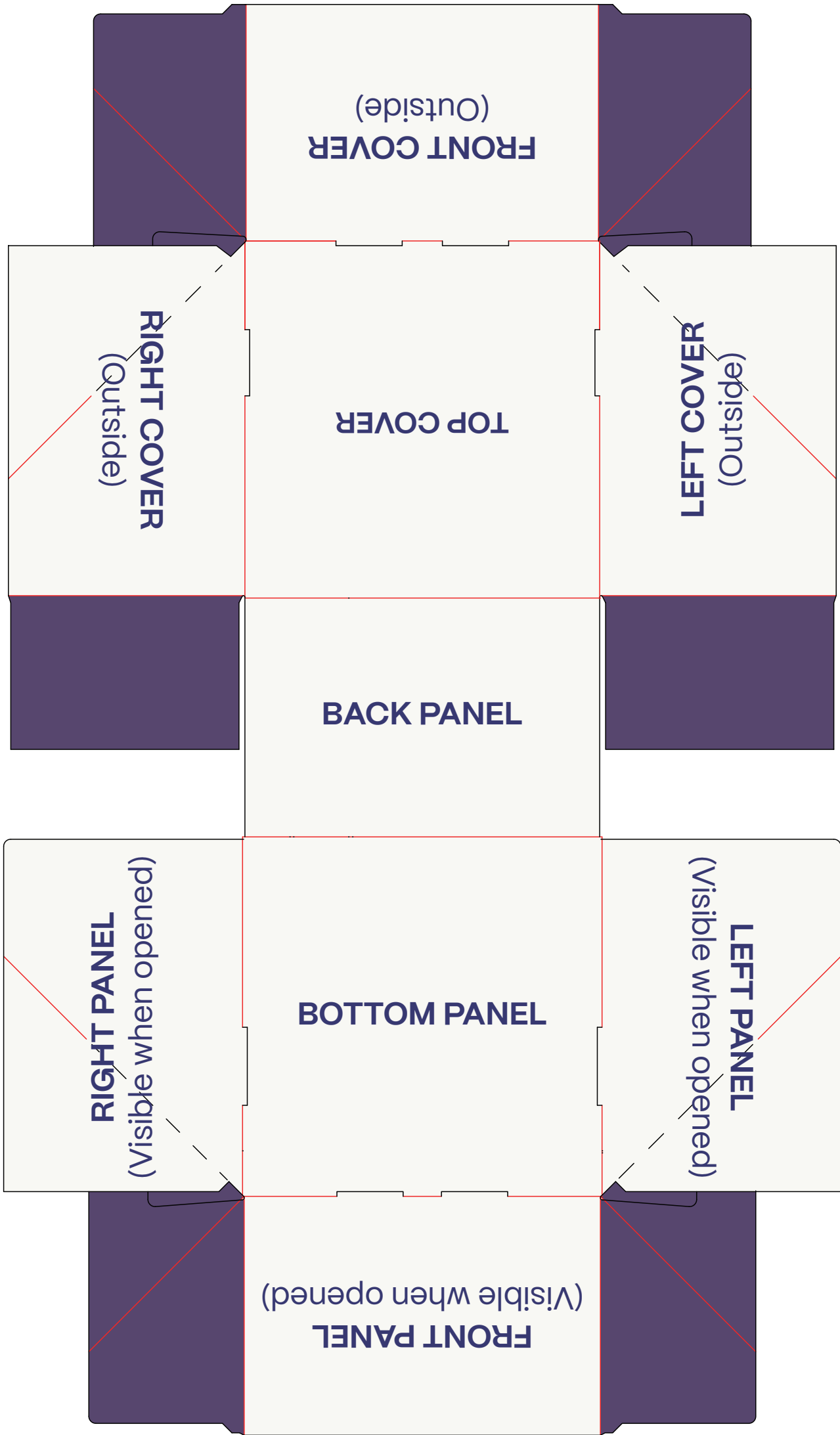
Connect to anything and everyone with dynamic QR & microsites

Create QR Code (free) →

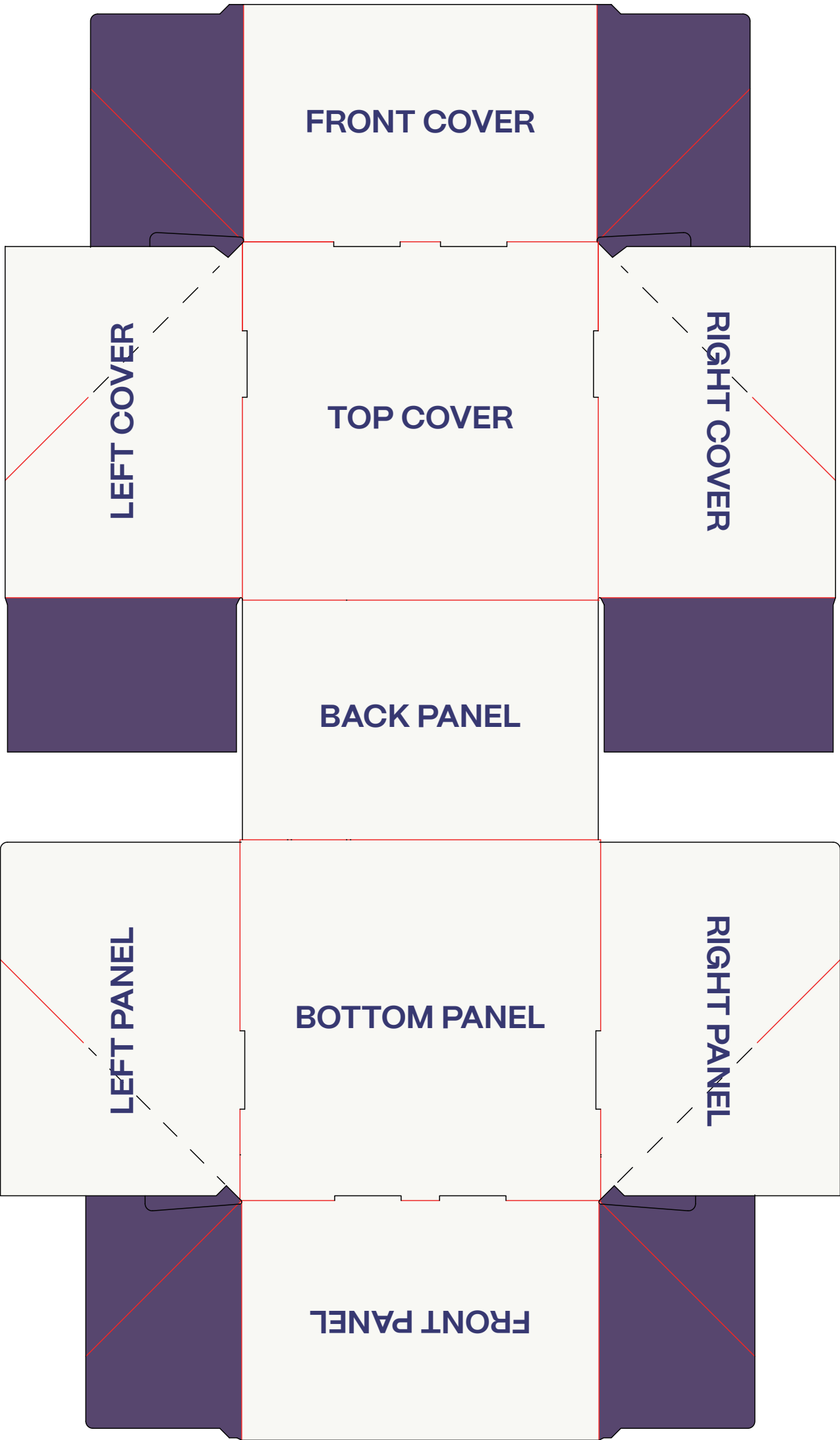
noissue.

Pastry Box – Orientation Guide (Auto-pop)

OUTSIDE



INSIDE



HIDDEN SPACES

noissue.
Pastry Box



Size:

L: 254 mm
W: 254 mm
H: 127 mm

Print Colors:

- ☐ Insert Color Code
☐ Insert Color Code
☐ Insert Color Code
☐ Insert Color Code

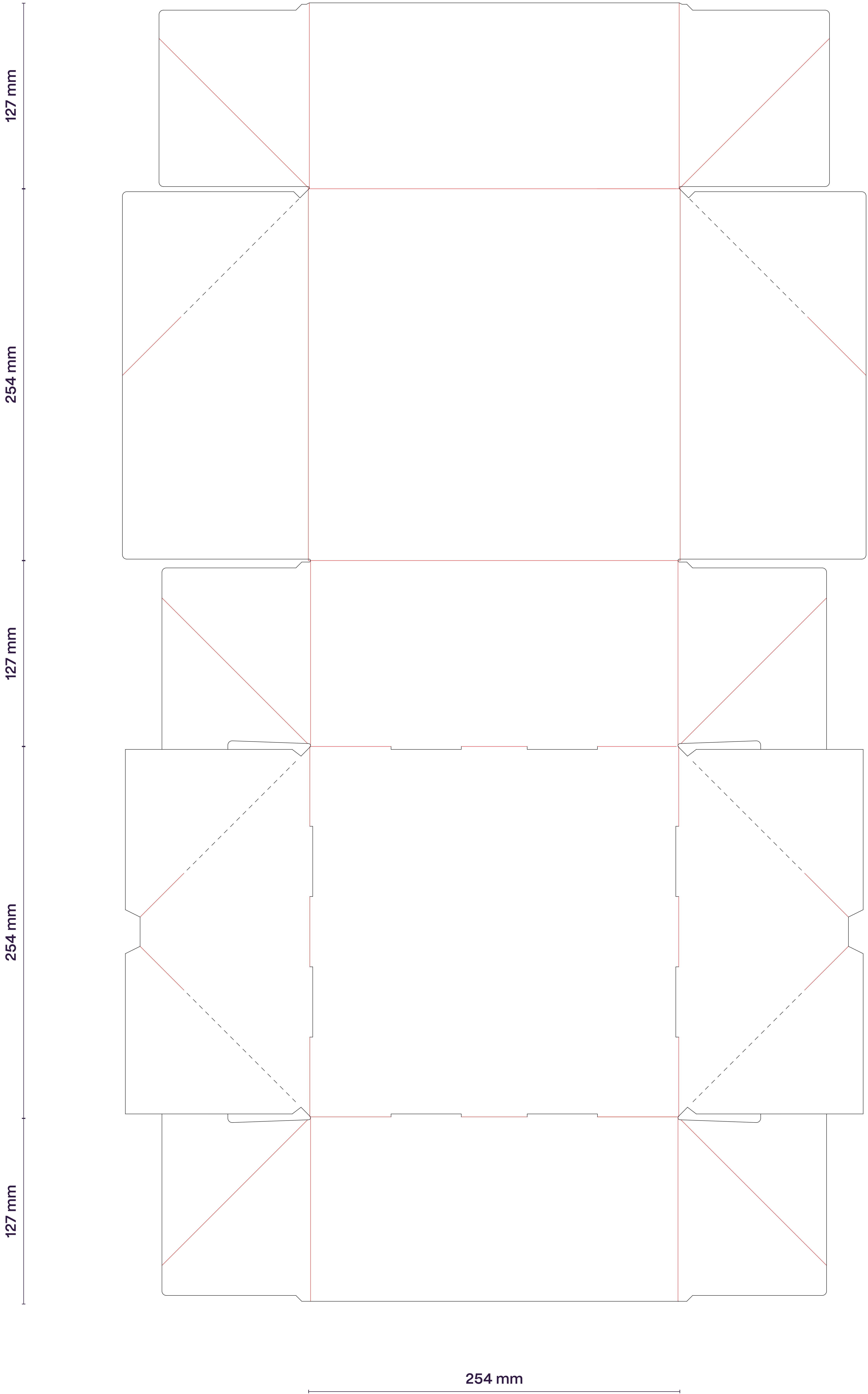
Other Notes:



LEGEND:

-  CUT LINE
 FOLD

OUTSIDE



INSIDE

