



- Size

203mm x 203mm x 101mm
- Print Option

Inside and Outside
- Color

Pantone or CMYK

- Sustainability

Recyclable, FSC-Certified,
FDA-Compliant

Print perfect checklist

- Add your custom artwork to **your design here layer**.
- In order to ensure your custom packaging cuts correctly, it is very important that the unique structural dieline we send you is included as part of the print file. Please **do not delete, rotate or change the colors** of the structural dieline.
- Keep all important text and graphics within at least **0.125 inches (3 mm)** from the cutting line to avoid them being cut off during production.
- We recommend using **10 pt font size** or larger.
- Lines and stroke weight should be no less than **.5pt** and **1pt** if reversed out.
- For best results, all artwork should be vectored and image resolution should be **no less than 300 dpi**.
- In order to ensure your custom pastry box prints correctly, we require that **all fonts be converted to outlines**.
- For optimal scanning, ensure **QR codes have high contrast** and measure **20x20mm or above**. Do not scale the QR code below a **minimum of 16x16mm**.

- 1

Download dieline

Ensure you have downloaded the correct sized dieline. Dielines can be found on the **noissue website**.

2

Complete your design

Use the Print Perfect Checklist as a guide to get the best print results. Export as **CMYK PDF**. No crop marks needed.

3

Upload artwork and order, or share with yourAccount Manager

Complete your order, upload your artwork and checkout. To guarantee print satisfaction, we'll review your file and send you a final proof to approve before going to print.

Connect your packaging

NEW

Tapkit by noissue

Add a Dynamic QR code to your packaging

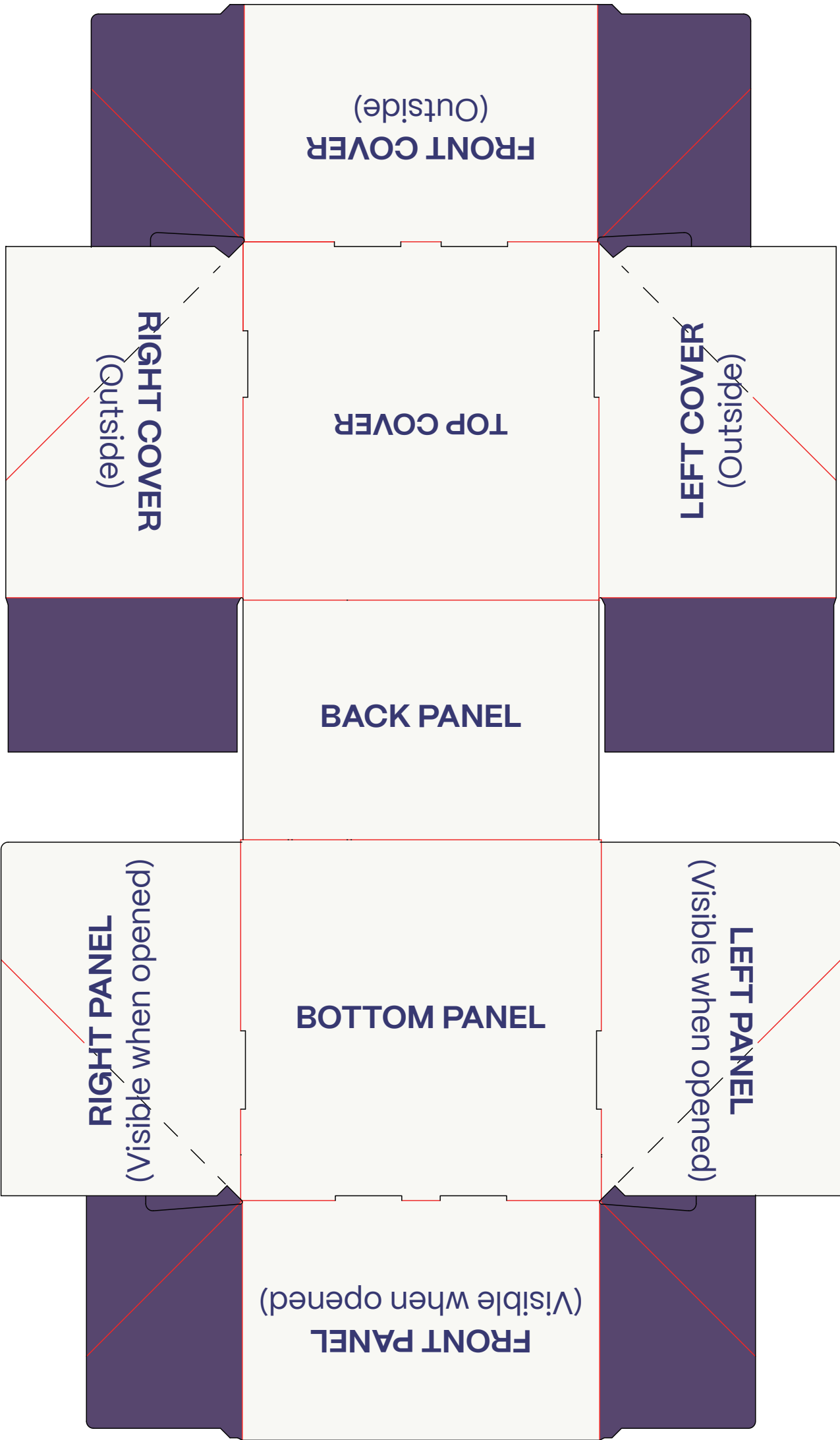
Connect to anything and everyone with dynamic QR & microsites

Create QR Code (free) →

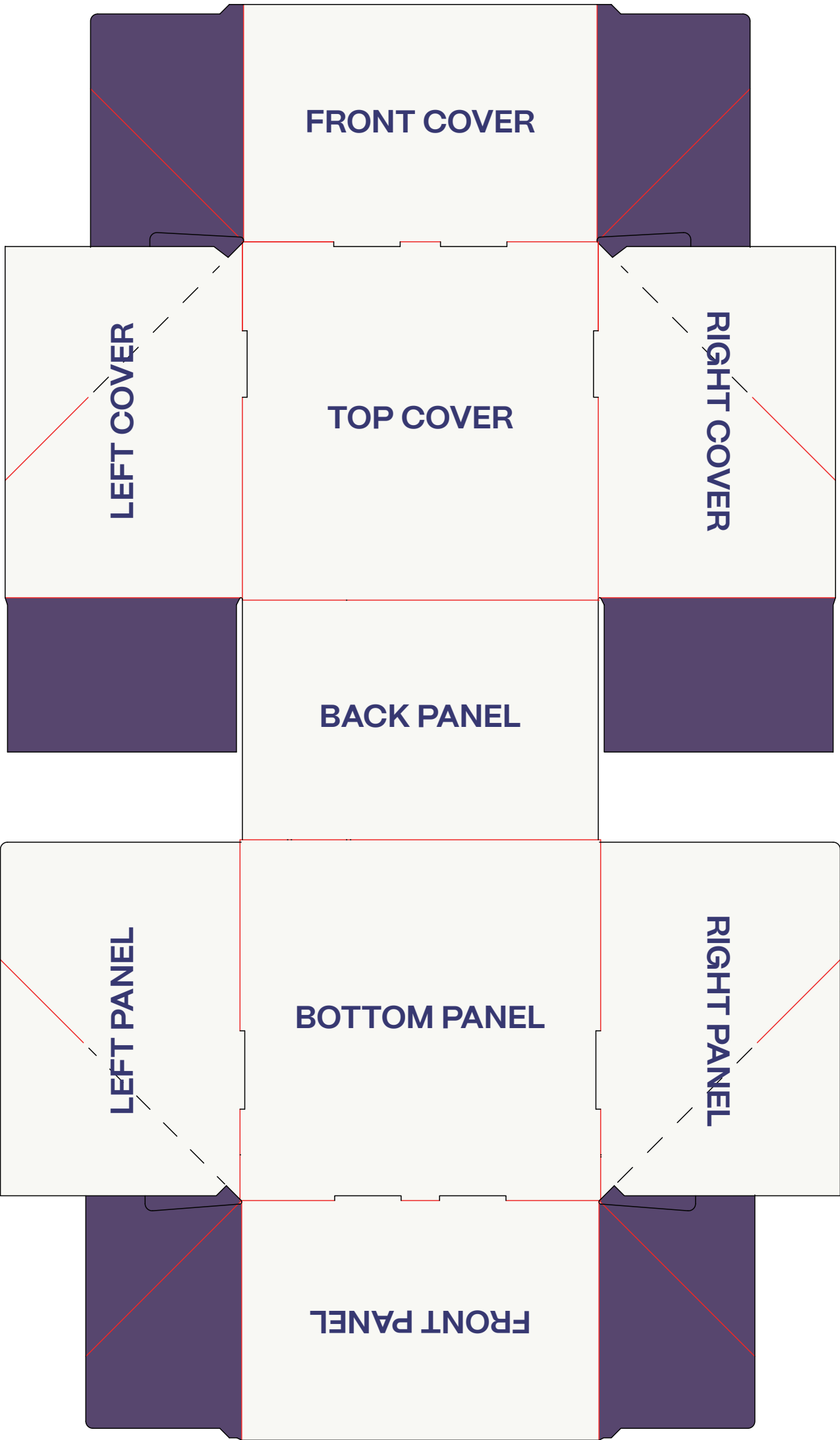
noissue.

Pastry Box – Orientation Guide (Auto-pop)

OUTSIDE



INSIDE



HIDDEN SPACES

noissue

Pastry Box



Size:

L: 203 mm
W: 203 mm
H: 101 mm

Print Colors:

- ☐ Insert Color Code
☐ Insert Color Code
☐ Insert Color Code
☐ Insert Color Code

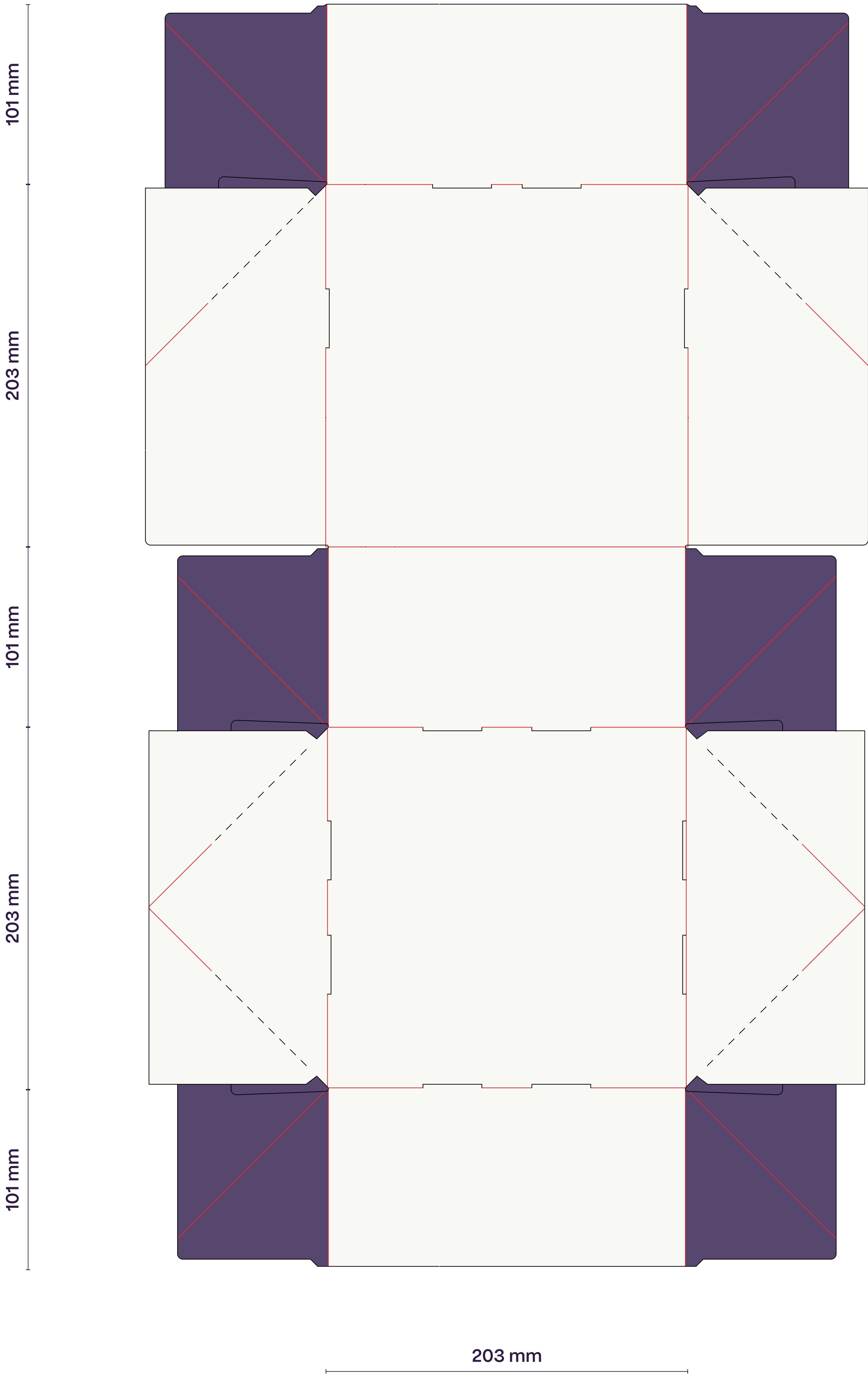
Other Notes:

- ☒ None

LEGEND:

- CUT LINE
 FOLD

OUTSIDE



INSIDE

