

noissue

Custom Container Shipping Box



- Size**
203 x 203 x 203 mm
(8 x 8 x 8")
- Base Material**
☒ Kraft or ☐ White
- Print Option**
Inside and Outside
- Color**
CMYK
- Sustainability**
Recycled, Recyclable, Premium White – 30% Recycled, White & Kraft – Up to 60% Recycled, FSC-Certified

Print perfect checklist

- ☐

Add your custom artwork to **your design here layer**.
- ☐

In order to ensure your custom packaging cuts correctly, it is very important that the unique structural dieline we send you is included as part of the print file. Please **do not delete, rotate or change the colors** of the structural dieline.
- ☐

We recommend using **10 pt font size** or larger.
- ☐

Single logo or design should also be **0.125 in** away from the trim lines.
- ☐

Lines and stroke weight should be no less than **.5pt** and **1pt** if reversed out.
- ☐

All artwork should be converted to **CMYK**.
- ☐

An alternative method to replicate the look of white ink on a kraft that you may consider is to purchase a white box instead and **simulate the Kraft material** by placing an image of Kraft material as a background image.
- ☐

If your art includes black, we recommend it's built as a rich black with **30 cyan (C), 30 magenta (M), 30 yellow (Y), and 100 black (K)**. For best results, include a .5pt stroke of 100% black (K) to avoid print overspray.
- ☐

For best results, all artwork should be vectored and image resolution should be **no less than 300 dpi**.
- ☐

In order to ensure your custom shipping box prints correctly, we require that **all fonts be converted to outlines**.
- ☐

Extend your design until the green lines in the dielines. This serves as a bleed area to allow for inconsistencies during printing.
- ☐

For optimal scanning, ensure **QR codes have high contrast** and measure **20x20mm or above**. Do not scale the QR code below a **minimum of 16x16mm**.

- 1

Download dieline
Ensure you have downloaded the correct sized dieline. Dielines can be found on the **noissue website**.

2

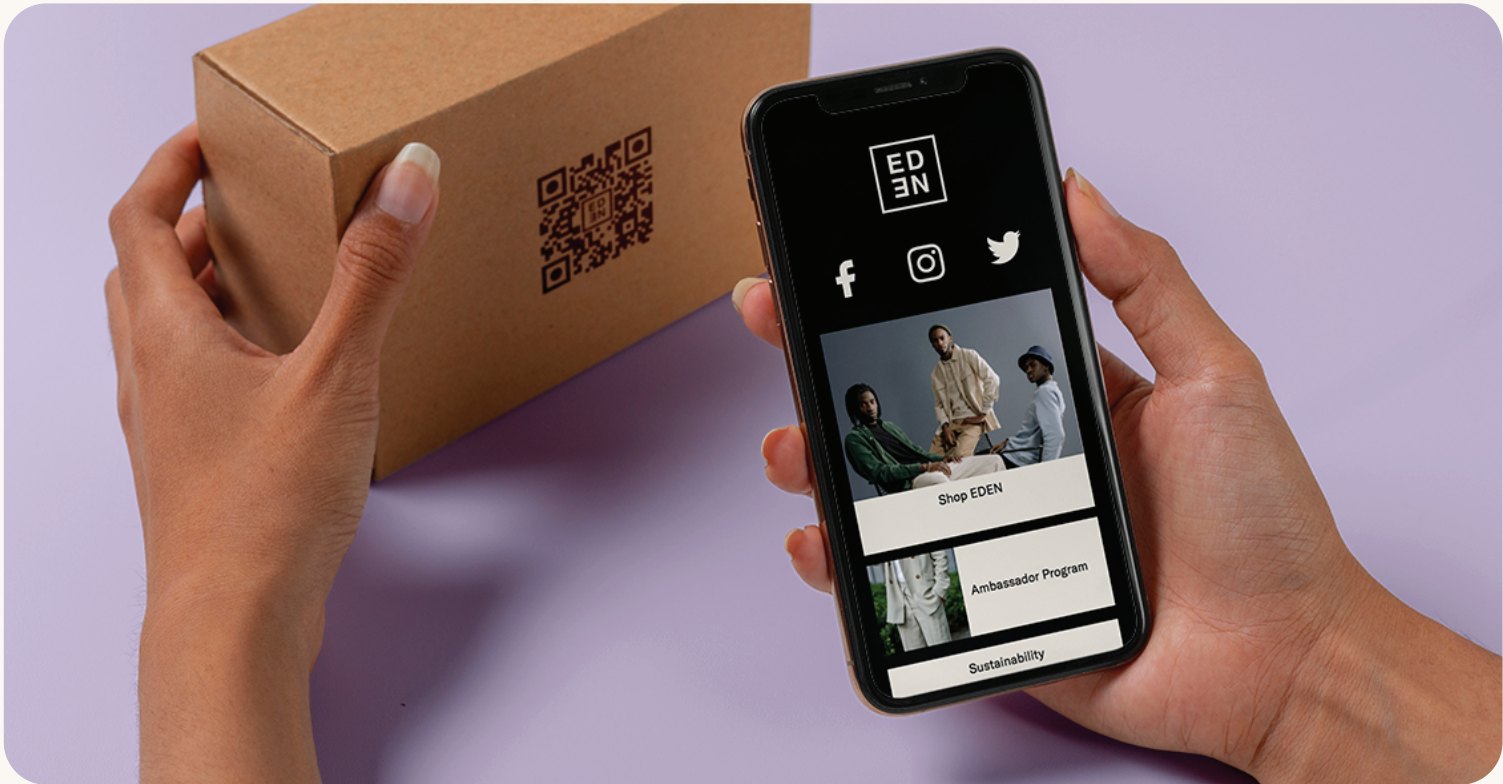
Complete your design
Use the Print Perfect Checklist as a guide to get the best print results. Export as **CMYK PDF**. No crop marks needed.

3

Upload artwork and order, or share with your Account Manager
Complete your order, upload your artwork and checkout. To guarantee print satisfaction, we'll review your file and send you a final proof to approve before going to print.

NEW

Connect your packaging



Tapkit by noissue

Add a Dynamic QR code to your packaging

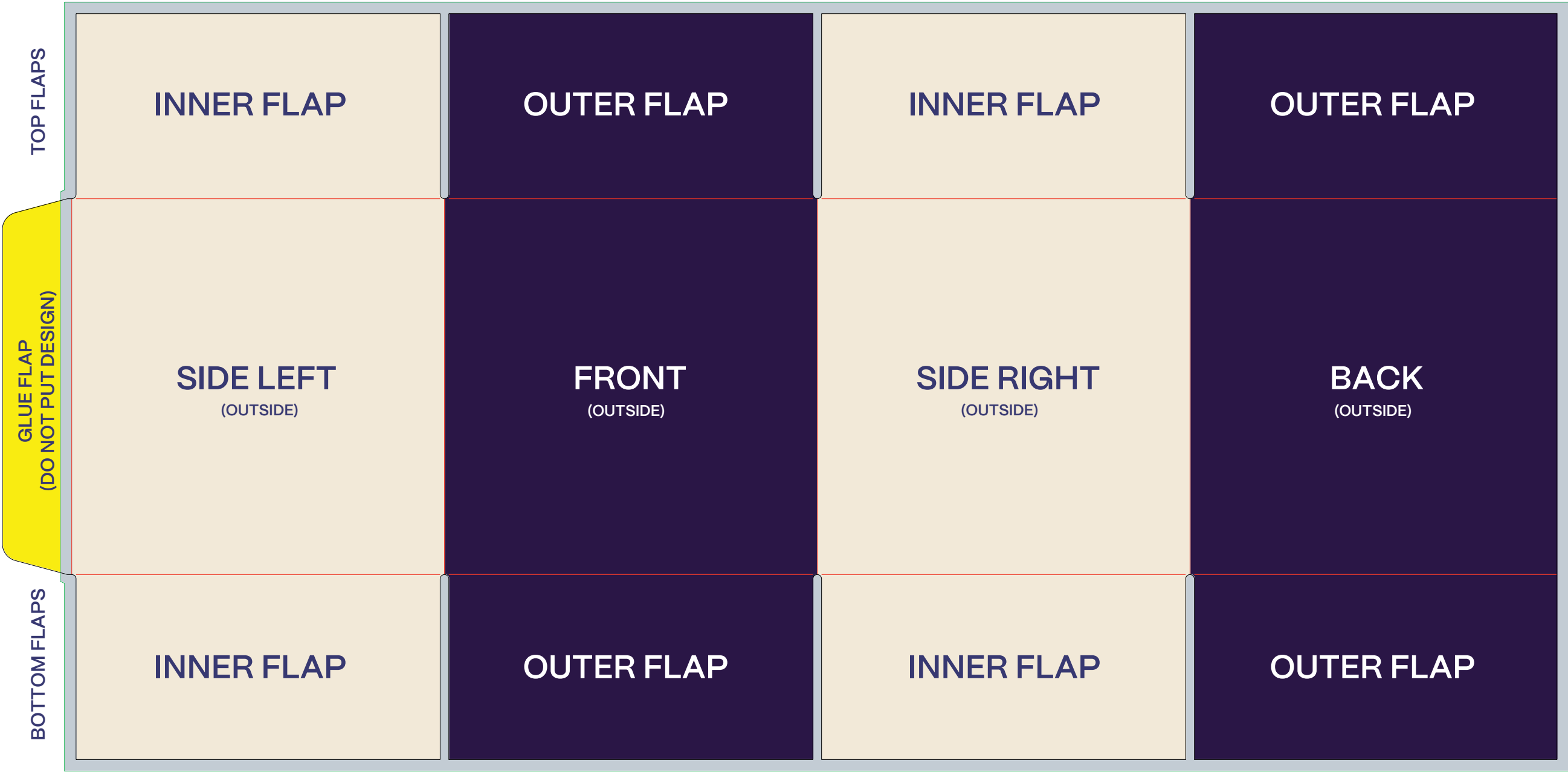
Connect to anything and everyone with dynamic QR & microsites

Create QR Code (free) →

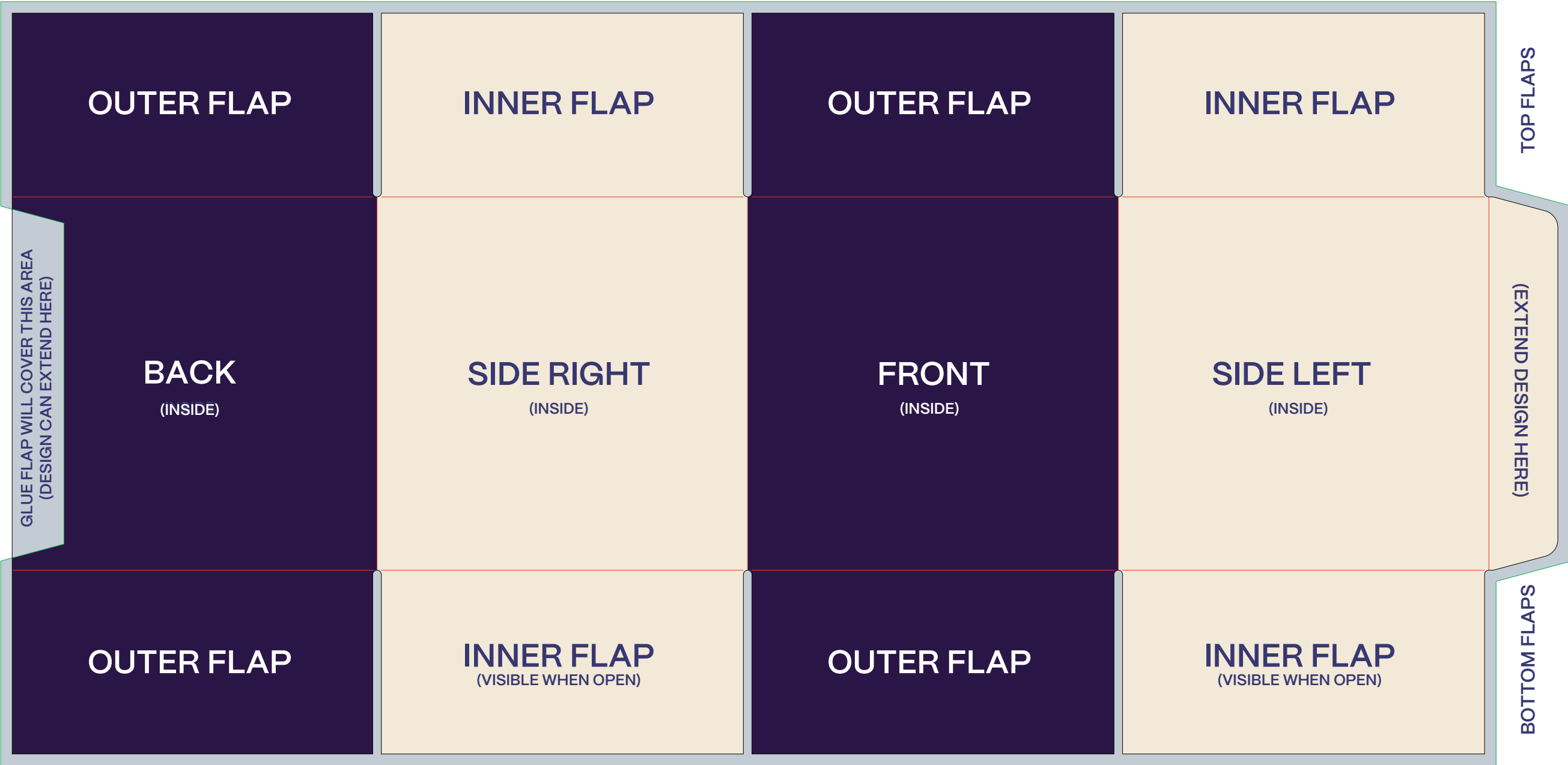
noissue.

Custom Container Shipping Box – Orientation Guide

OUTSIDE (CONTAINER SHIPPING BOX)

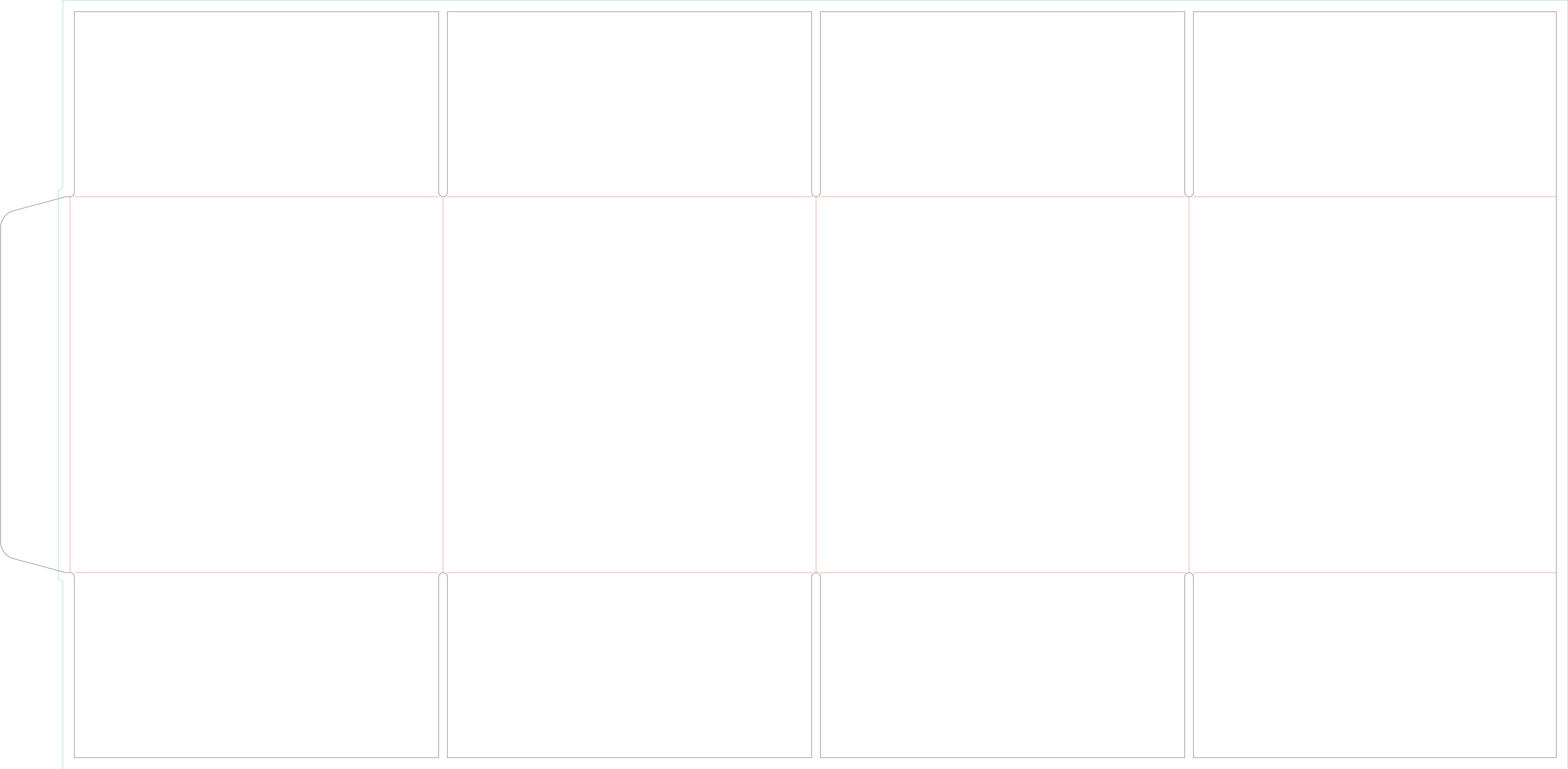


INSIDE (CONTAINER SHIPPING BOX)



noissue.

Custom Container Shipping Box – Outside



noissue.

Custom Container Shipping Box – Inside

