



Size

18in x 18in x 2in

Base Material

Kraft or White

Print Option

Outside Only

Color

1–4 Pantone Colors

Sustainability

Compostable, Recyclable,
FDA-Certified

Print perfect checklist

- Add your custom artwork to **your design here layer**.
- In order to ensure your custom packaging cuts correctly, it is very important that the unique structural dieline we send you is included as part of the print file. Please **do not delete, rotate or change the colors** of the structural dieline.
- For full background design, make sure to extend your background to fill the bleed area to avoid a white border. We require **5mm** of bleed all around.
- We recommend using **1mm font size** or larger.
- Lines and stroke weight should be no less than **0.2mm** if reversed out.
- All artwork should be converted to **Coated or Uncoated Pantones**. Please take note that we can only print up to **4 Pantone colors** only.
- For best results, all artwork should be strictly **vectorized**.
- In order to ensure your custom pizza box prints correctly, we require that **all fonts be converted to outlines**.
- For optimal scanning, ensure **QR codes have high contrast** and measure **20x20mm or above**. Do not scale the QR code below a **minimum of 16x16mm**.

- 1

Download dieline

Ensure you have downloaded the correct sized dieline. Dielines can be found on the **noissue website**.
- 2

Complete your design

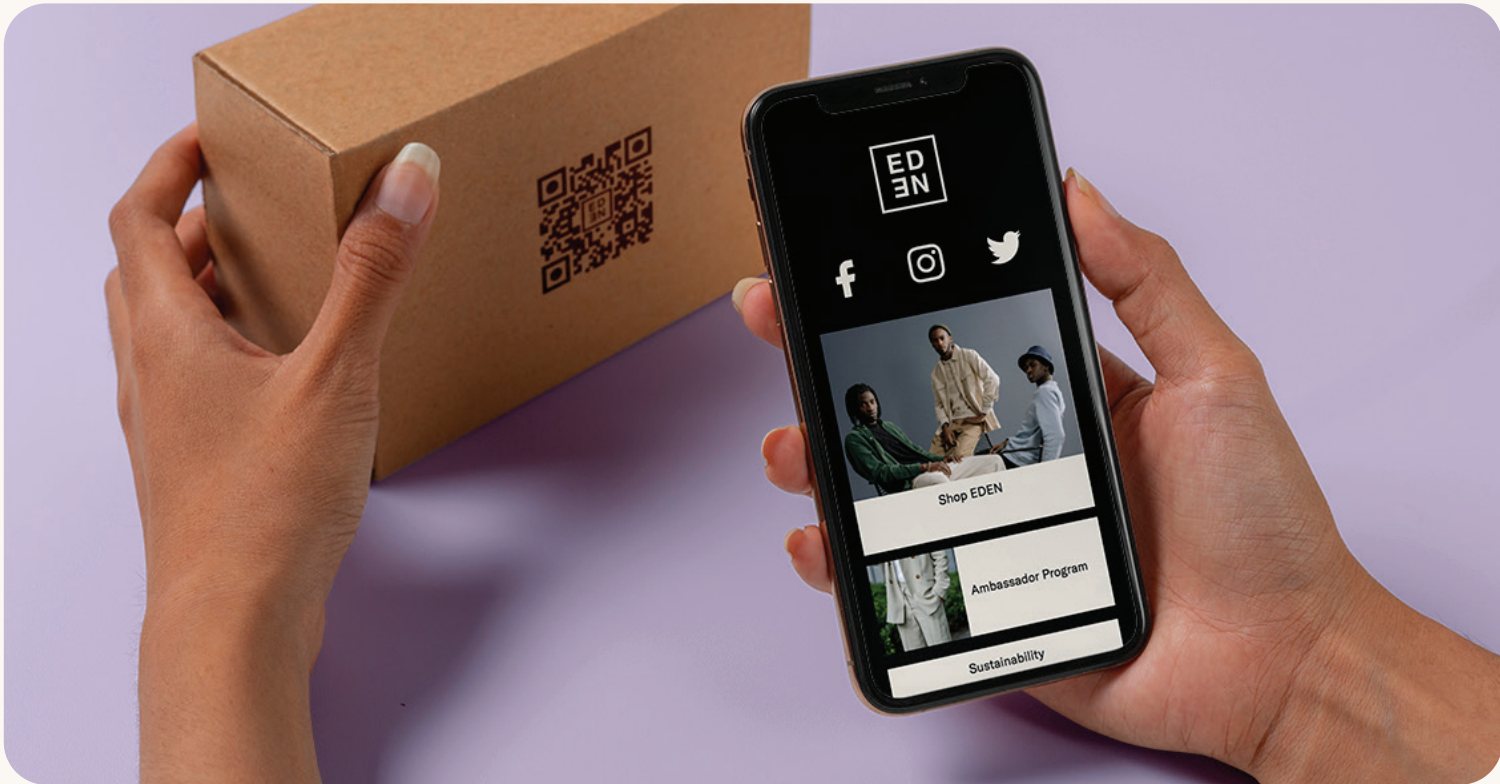
Use the Print Perfect Checklist as a guide to get the best print results. Export as **CMYK PDF**. No crop marks needed.
- 3

Upload artwork and order

Complete your order, upload your artwork and checkout. To guarantee print satisfaction, we'll review your file and send you a final proof to approve before going to print.

Connect your packaging

NEW



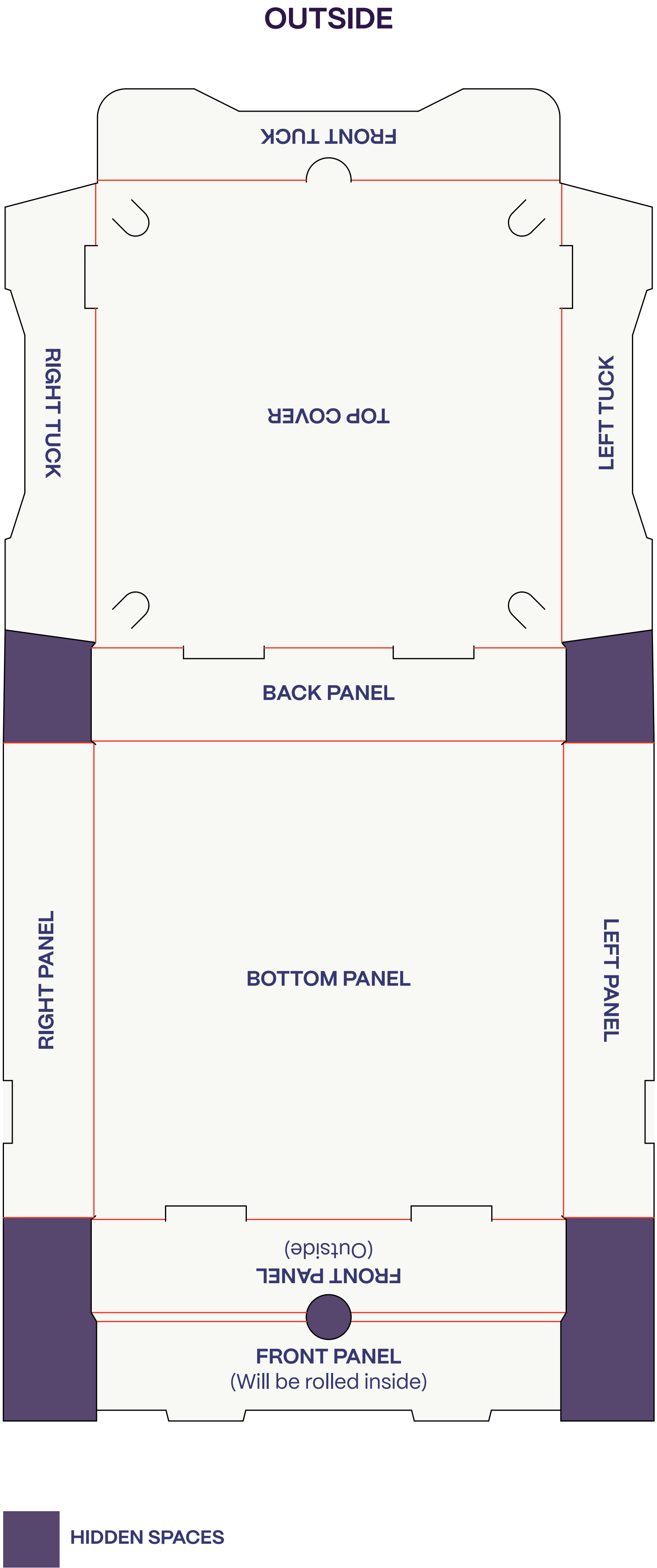
Tapkit by noissue

Add a Dynamic QR code to your packaging

Connect to anything and everyone with dynamic QR & microsites

Create QR Code (free) →

Custom Pizza Box – Orientation Guide





Size:

18" x 18" x 2"

Base Material:

- White
- Brown Kraft

Print Color:

- Insert Pantone Color
- Insert Pantone Color
- Insert Pantone Color
- Insert Pantone Color

Other Notes:

- None

LEGEND:

- CUT LINE
- FOLD
- BLEED AREA

OUTSIDE

