

noissue

Custom Pastry Box



Size
152mm x 114mm x 70mm

Base Material
☒ Kraft or ☐ White

Print Option
Inside and Outside

Color
Pantone or CMYK

Sustainability
Recyclable, FSC-Certified,
FDA-Compliant

Print perfect checklist

- ☐ Add your custom artwork to **your design here layer**.
- ☐ In order to ensure your custom packaging cuts correctly, it is very important that the unique structural dieline we send you is included as part of the print file. Please **do not delete, rotate or change the colors** of the structural dieline.
- ☐ Extend your background design at least **0.125 inches (3 mm)** beyond the cutting line. This allows for minor errors during the cutting process. Ensure that any elements that need to extend to the edge of the finished product extend into this bleed area.
- ☐ Keep all important text and graphics within at least **0.125 inches (3 mm)** from the cutting line to avoid them being cut off during production.
- ☐ We recommend using **10 pt font size** or larger.
- ☐ Single logo or design should also be **0.125 in** away from the trim lines.
- ☐ Lines and stroke weight should be no less than **.5pt** and **1pt** if reversed out.
- ☐ If your art includes black, we recommend it's built as a rich black with **30 cyan (C), 30 magenta (M), 30 yellow (Y), and 100 black (K)**. For best results, include a .5pt stroke of 100% black (K) to avoid print overspray.
- ☐ For best results, all artwork should be vectored and image resolution should be **no less than 300 dpi**.
- ☐ In order to ensure your custom mailer box prints correctly, we require that **all fonts be converted to outlines**.
- ☐ For optimal scanning, ensure **QR codes have high contrast** and measure **20x20mm or above**. Do not scale the QR code below a **minimum of 16x16mm**.

- 1

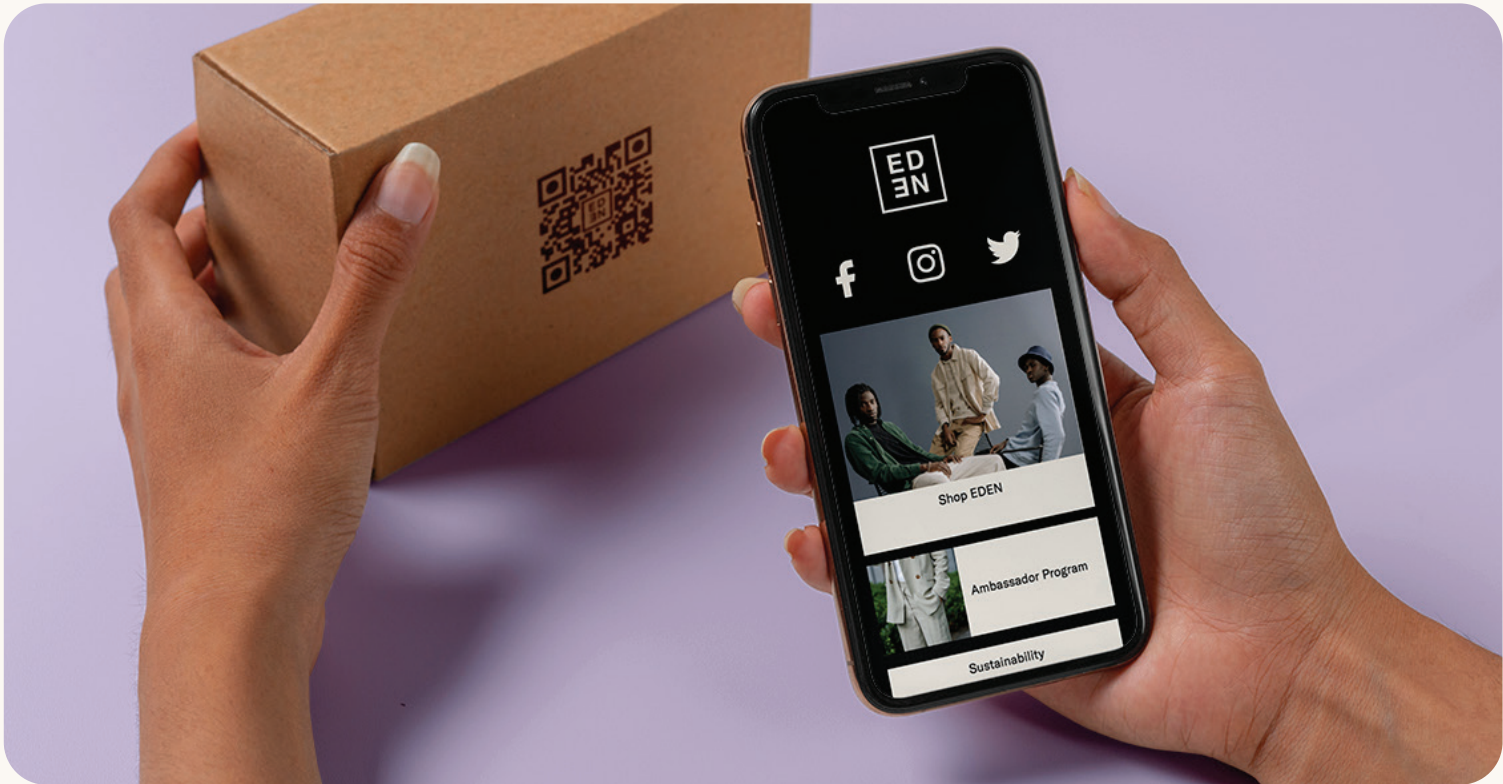
Download dieline
Ensure you have downloaded the correct sized dieline. Dielines can be found on the **noissue website**.
- 2

Complete your design
Use the Print Perfect Checklist as a guide to get the best print results. Export as **CMYK PDF**. No crop marks needed.
- 3

Upload artwork and order, or share with yourAccount Manager
Complete your order, upload your artwork and checkout. To guarantee print satisfaction, we'll review your file and send you a final proof to approve before going to print.

Connect your packaging

NEW



Tapkit by noissue

Add a Dynamic QR code to your packaging

Connect to anything and everyone with dynamic QR & microsites

Create QR Code (free) →

noissue®

Custom Pastry Box



SIZE
152mm x 114mm x 70mm



FINISH
Glossy or Matte



BASE MATERIAL
☒ Kraft / ☐ White



PRINT COLOR
☐ CMYK or Pantone Color

LEGEND:

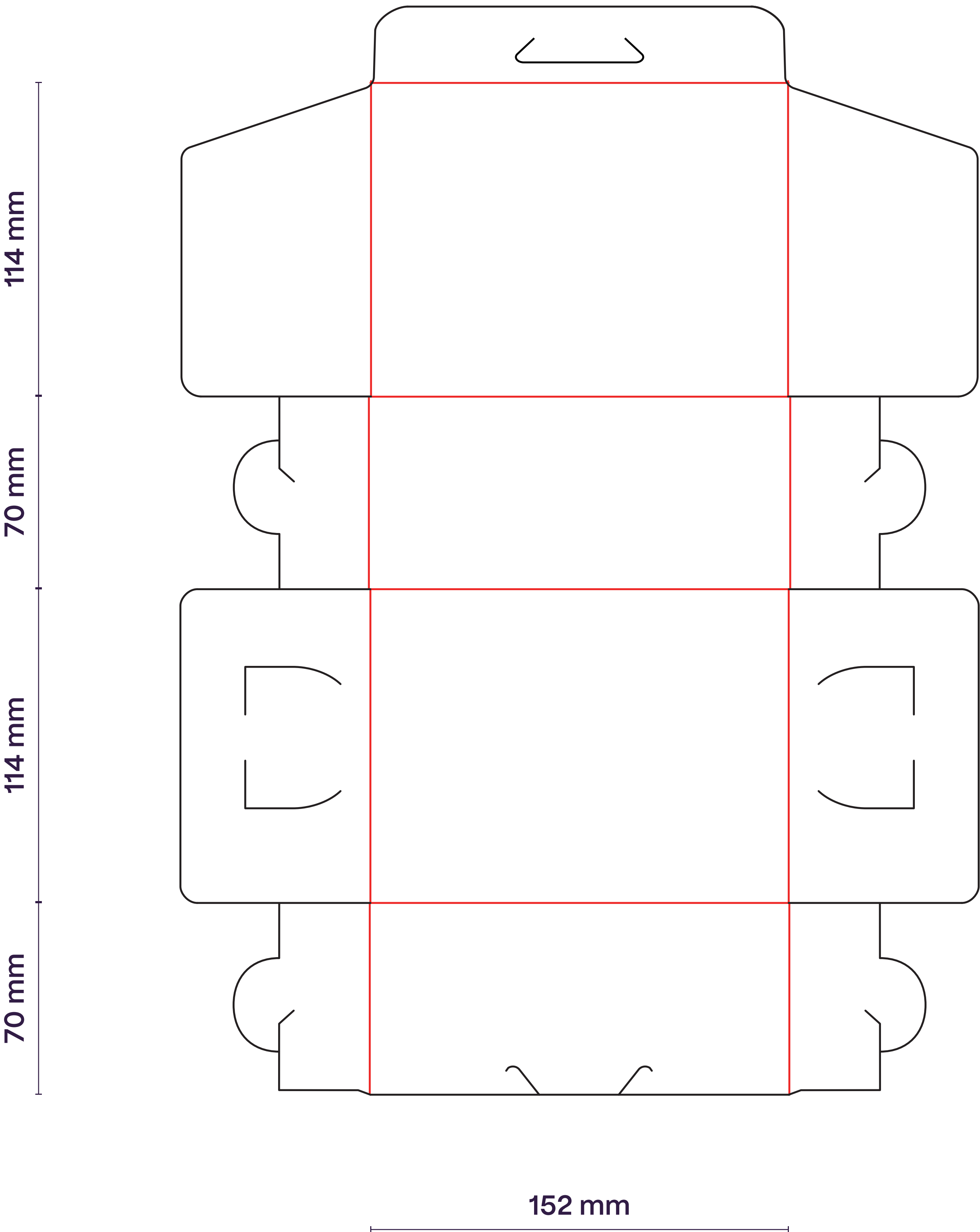
— Cut / Die

— Fold

NOTES:

- * For one-side prints, leave the other side blank.
- * Our box is measured from the outside. The interior will be shorter to cover the thickness of the box.

OUTSIDE



INSIDE

