

MONIER

Nova Series



Part of **BMI**



The colours shown here are reproduced as close to the original as printing technology allows. For best accuracy on colour selection, refer to actual tile. Monier recommends the use of underlay in all flat tiles.

The BMI Nova Series roof tile retains its modern minimalist design and distinct features, now featuring a modest and durable surface suitable for our tropical climate.



**MINIMALIST
ELEGANCE**

- Subtle, slightly rough textures that enhance without overpowering.



**LASTING
BEAUTY**

- Designed to withstand tropical climates, ensuring enduring appeal.



**SUPERIOR
CRAFTSMANSHIP**

- A testament to innovation, quality, and our commitment to excellence.

Monier[®] Legacy[®] Nova, Modern Flat Roof & Minimalist Design

PRODUCT & TECHNICAL DATA

Dimension	330mm (W) x 420mm (L)		
Batten Spacing*	310mm - 330mm		
*Batten Spacing has to be calculated based on actual rafter length. The maximum rafter length span up to 6 meters at minimum roof pitch stated. For rafter lengths greater than this, please contact Monier.			
Minimum Headlap	90mm - 110mm		
Coverage	10.1 - 10.8pcs/m ²		
Weight	5.40 kg (+0.0, -0.40)		
Laying Pattern	Strictly Cross / Broken Bond		
Pitch**	≥20°	≥25°	≥30°
Max. Rafter Length	4.5m	6.0m	9.0m



Nova Black

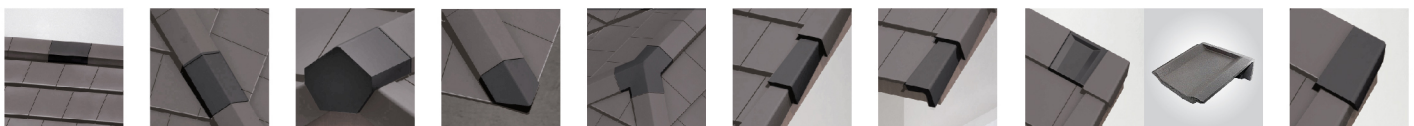
In view of innovation, the specifications are subject to change without any prior notice and in the event of such changes. Monier shall ensure that the new specifications are equivalent if not better.

**Monier[®] Legacy[®] Nova is essential to be installed with Monier's Complete Roof System Components. Refer to the sales representative for further information.

ANGULAR FITTINGS & ROOF SOLUTIONS SERIES

LEGACY[®] NOVA is offered as a closed system with a wide range of fittings and components.

MONIER[®] ANGULAR FITTINGS SERIES



Angular Ridge (Coverage: 2.90 pcs/m)	Angular Hip (Coverage: 2.90 pcs/m)	Angular Ridge End	Angular Hip End	3-Way Apex	Universal Angular Verge Tile (Coverage: 3.10 pcs/m)	Universal Angular Verge End	Monoridge Tile (Coverage: 3.30 pcs/m)	Monoridge End Tile
---	---------------------------------------	-------------------	-----------------	------------	--	-----------------------------	--	--------------------

MONIER[®] ROOF SOLUTION

CoolRoof™		SolarRoof™		Leak-Proof™				Safe-Roof™				
Compactroll [®] Plus for Ridge & Hip Ventilation	Radenshield [®] (Underlay)	Pest Guard [™] for Ventilation at the Eaves	Solar Water Heating System	Toplight [®]	Compactroll [®] Plus for Ridge & Hip Ventilation	V-Pipe Set	EasyFlash [®] Plus (Wall Flashing Dry Fix)	Solar Fitting Kit	Wakastrap	Pest Guard [™] for Ventilation at the Eaves	Cut Tile Clip for Secure Fixing at Valleys & Hips	Fixings (Nails/Screw/Clips)

Monier® Perspective® Nova, Sleek Lines with Geometric Design & Durable Coating

PRODUCT & TECHNICAL DATA

Dimension	330mm (W) x 420mm (L)			
Batten Spacing*	up to 295mm	up to 320mm	up to 330mm	up to 345mm
Minimum Headlap	125mm	100mm	90mm	75mm
Coverage	11.3pcs/m ²	10.4pcs/m ²	10.1pcs/m ²	9.7pcs/m ²
Weight	Weight/piece 4.5 kg (+0.0, -0.30)			
	Weight/m ² (+0.0, -3.34kg/m ²)	46.8 kg/m ² (+0.0, -3.12kg/m ²)	45.4 kg/m ² (+0.0, -2.98kg/m ²)	43.7 kg/m ² (+0.0, -2.96kg/m ²)
Minimum Pitch	≥15°	≥17.5°	≥20°	≥25°

*Batten Spacing has to be calculated based on actual rafter length. The **maximum rafter length span up to 6 meters** at minimum roof pitch stated. For rafter lengths greater than this, please contact BMI.

In view of innovation, the specifications are subject to change without any prior notice and in the event of such changes, Monier shall ensure that the new specifications are equivalent if not better.



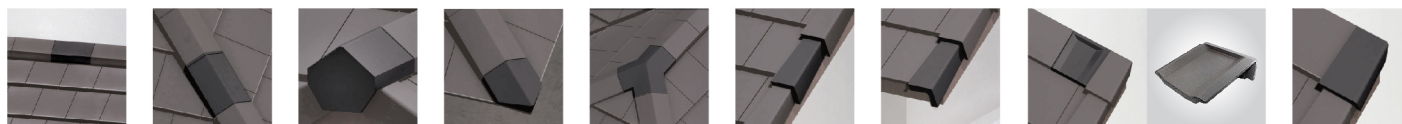
Nova Black

*With proper overlapping, MONIER® PERSPECTIVE® NOVA design can cope with ultra modern 15° pitch roofs.

ANGULAR FITTINGS & ROOF SOLUTIONS SERIES

PERSPECTIVE® NOVA is offered as a closed system with a wide range of fittings and components.

MONIER® ANGULAR FITTINGS SERIES



Angular Ridge (Coverage: 2.90 pcs/m)	Angular Hip (Coverage: 2.90 pcs/m)	Angular Ridge End	Angular Hip End	3-Way Apex	Universal Angular Verge Tile (Coverage: 3.10 pcs/m)	Universal Angular Verge End	Monoridge Tile (Coverage: 3.30 pcs/m)	Monoridge End Tile
---	---------------------------------------	-------------------	-----------------	------------	--	-----------------------------	--	--------------------

MONIER® ROOF SOLUTION

CoolRoof™

SolarRoof™

Leak-Proof™

Safe-Roof™



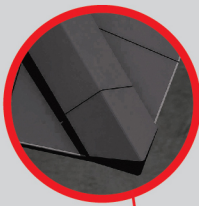
Compactroll® Plus for Ridge & Hip Ventilation	Radenshield® (Underlay)	Pest Guard™ for Ventilation at the Eaves	Solar Water Heating System	Toplight®	Compactroll® Plus for Ridge & Hip Ventilation	V-Pipe Set	EasyFlash® Plus (Wall Flashing Dry Fix)	Solar Fitting Kit	Wakastrap	Pest Guard™ for Ventilation at the Eaves	Cut Tile Clip for Secure Fixing at Valleys & Hips	Fixings (Nails/Screw/Clips)
---	-------------------------	--	----------------------------	-----------	---	------------	---	-------------------	-----------	--	---	-----------------------------

Components and fittings make tiles become a roof

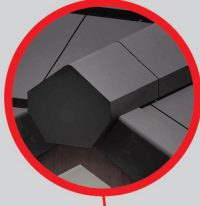
Mono-Ridge End Tile



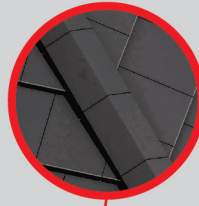
Angle Hip End



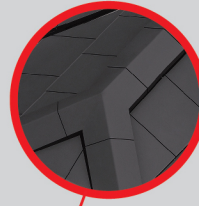
Angle Ridge End Tile



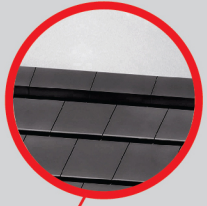
Angle Hip Tile



3 Way Apex



Angle Ridge Tile



Mono-Ridge Tile



Verge Tile



Fixings



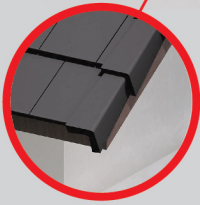
Wall Flashing



Toplight



Verge End Tile



Ridge & Hip



Underlay



Pest Guard™



Ventilation Pipe



Rainwater





Roof System Guarantee

Hailed as the first of its kind in Malaysia, Monier® Roof System Guarantee (RSG) offers the ultimate peace of mind to customers. That's because BMI Malaysia guarantees the rain-tightness* of Monier® roof systems for a period of up to 10 years** upon installation. The guarantee applies solely to roof system*** sold under the Monier® brand in Malaysia.



**PROTECTION AGAINST
UNEXPECTED
REPAIR COST**



**THE ULTIMATE
PEACE OF MIND**



**UNWAVERING
COMMITMENT
TO QUALITY**

* "Rain-tightness" refers to the ability of a roof system, including its design, tiles, fittings and components, to prevent the passage of rainwater through the roof system and impede damage to the underlying structure.

** Terms & conditions apply.

*** "Roof-systems" refers to a product or a group of products designed to fit together to create a complete roof system fulfilling its functional requirements.



Confident in your roof? We guarantee it.

Introducing BMI RoofPro: Uniting top contractors and installers for superior quality and craftsmanship.

Through BMI RoofPro, you can **reach out to the roofing industry's best contractors, and BMI's globally proven roofing systems and advanced technologies**, certain that you will find the best solution to your specific roofing needs, and with complete confidence in the installation standards.

Achieve roofing excellence and maximize your investment with BMI RoofPro. Whether you require a solution for a basic flat roof or an extraordinary architectural masterpiece, trust in our expertise to ensure that you get it precisely right. Embrace the new approach to roofing and rely on BMI RoofPro for superior results.

Look for a roof that performs

A roof is integral to the energy efficiency of a building. BMI RoofPro contractors using BMI technology can provide every solution for your needs, from retaining heat through advanced insulation systems to keeping it out with reflective membranes. They can help you create roofs holding solar panels or heat recovery systems, either integrated or on-roof solutions.

Choosing a BMI RoofPro member gives you the assurance that they will perform for years to come.

Look for a positive impact on the community

Through BMI RoofPro, you can access solutions that turn a roof into a true community asset. The BMI RoofPro network of qualified installers allow you to find the right specialist roofer for complex installations and maximise the value of your investment.

- Include green areas to support urban insect populations
- Provide a water collection system
- Reduce Nitrous Oxide in the area
- Create spaces for social interaction

Look for support to realise your vision

Building owners often have big ambitions for their roofing projects and look to push the boundaries of design and construction, to compliment the building or to transform.

- Create more usable space for your building
- Turn a flat roof into a pitched roof
- Create a garden or a social outdoor space

Through BMI RoofPro, you have access to the contractors and roofing technologies to confidently bring your roofing vision to life.

Look for valuable enhanced guarantees

The assured quality of workmanship and materials built into the BMI RoofPro programme means you will get **enhanced guarantees** on the projects you commission through BMI RoofPro.

BMI RoofPro offers three levels of guarantee, so you can choose the cover you need. And through rapid response times and regular, in-depth inspections during construction, we ensure that your roof keeps performing and your business keeps running.

MONIER



Awarded Corporate Excellence Award at the prestigious Asia Pacific Enterprise Awards (APEA) 2024



PMHA 2016/2017 Notable Achievement in Environmental Performance



Member of the Malaysia Green Building Confederation



Scan QR Code for BMI Malaysia



The Best Brands in Roof Systems by The Brand Laureate Awards for 6 Consecutive Years 2008, 2009, 2010, 2011, 2012 and 2015



Recognized for our CSR efforts, Monier was honoured with an Asia Responsible Entrepreneur Award 2011



CERTIFIED TO: MS ISO 9001:2015 Certificate No: QMS 00434



Scan QR Code for Showroom & Sales office location

BMI ROOFING SYSTEMS SDN. BHD.

Registration No.197401002179 (19163-M)
(Formerly known as Monier Malaysia Sdn. Bhd.)
Suite 11.02, 11th Floor, Menara JKG,
No. 282, Jalan Raja Laut,
50350 Kuala Lumpur, Malaysia
T (+60) (3) 21760600
Toll Free: 1800 88 0865
roofing-malaysia@bmgigroup.com

bmgigroup.com/my



ABOUT BMI GROUP

BMI Group was born out of a recognition that customers now expect a single point of expertise to help them find their ideal roof. Bringing together some of the industries most trusted brands to become the largest supplier of both flat and pitched roofing and waterproofing solutions throughout Europe, BMI Group has over 173 years of experience and innovation to offer its clients.

As a **Standard Industries** company, BMI Group, headquartered in London, has the support, reach and resources of a global enterprise. With over 120 production facilities across Europe, Africa and Asia, and more than 9,500 employees worldwide, the business is well positioned to provide an unparalleled level of service to homeowners, specifiers, contractors, property owners and developers.

Find out more at www.bmgigroup.com