

扫微信二维码  
关注谱尼测试

Pony Testing International Group

报告编号(Report ID): MNIWATOM87696721

# UN38.3 测试报告

## UN38.3 Test Report

Sample Description	LI-ION POLYMER BATTERY Li3939T44P8h756547
& Model	(3.87V 3.900Ah 15.09Wh)
Applicant	ZhuHai Coslight Battery Co., Ltd.
Manufacturer	Zhuhai Coslight Power Jinwan Subsidiary Co.,Ltd.

P O N Y 谱尼测试  
Pony Testing International Group  
www.ponytest.com



秒速扫一扫，使用小程序 小程序扫一扫，在线验证  
No.: MNIWATOM87696721  
Code: s9b8gs



扫微信二维码  
关注谱尼测试



Pony Testing International Group

Report ID: MNIWATOM87696721 Page 1 of 12

## I、SAMPLE DESCRIPTION

Sample description		LI-ION POLYMER BATTERY		Sample model	Li3939T44P8h756547
Applicant		ZhuHai Coslight Battery Co., Ltd.			
Manufacturer	Name	Zhuhai Coslight Power Jinwan Subsidiary Co.,Ltd.			
	Address	Workshop No.1, No.2, No.3 and No.5, No.3 Qingwansanlu Road, Qingwan Industry Park, Sanzao Town, Jinwan District, Zhuhai City, Guangdong Province, P.R.China			
	Tel	15919293015/0756-6331501			
	E-mail	molichun@coslight-zh.com	Web	http://lan.coslight-zh.com	
Nominal voltage		3.87V	Rated capacity	3.900Ah	Limited charge voltage 4.45V
Charge current		0.780A	Maximum continuous charge current	3.900A	End charge current 0.078A
Cut-off voltage		3.0V	Maximum discharge current	3.900A	Mass 51g
Cell number		1PCS	Cell model	CA466573F	Cell capacity 3.920Ah
Manufacturer of cell		ZhuHai Coslight Battery Co., Ltd.			
Electrochemistry System		Li-Co			
Entrust date		2019-01-23		Finished date	2019-02-13

## II、TEST METHOD

UNITED NATIONS "Recommendations on the TRANSPORT OF DANGEROUS GOODS" Manual of Tests and Criteria (ST/SG/AC.10/11/Rev.6/Amend.1), Part III sub-section.

## III、TEST ITEM & CONCLUSION

ITEM	SAMPLE NUMBER	STANDARD	CONCLUSION
Altitude simulation	N1~N5 C1~C5	UN38.3 ST/SG/AC.10/11/Rev.6/ Amend.1	PASS
Thermal test			PASS
Vibration			PASS
Shock			PASS
External short circuit			PASS
Crush	N6~N10 C6~C10		PASS
Overcharge	N11~N14 C11~C14		PASS
Forced discharge	N15~N24 C15~C24		PASS

The Samples has passed the test items of UNITED NATIONS "Recommendations on the TRANSPORT OF DANGEROUS GOODS" Manual of Tests and Criteria (ST/SG/AC.10/11/Rev.6/Amend.1), Part III sub-section.

Appraiser: Lizugiang

Checker: Jinshifang

Approver: Yishawbm

Issue Date: February 13, 2019





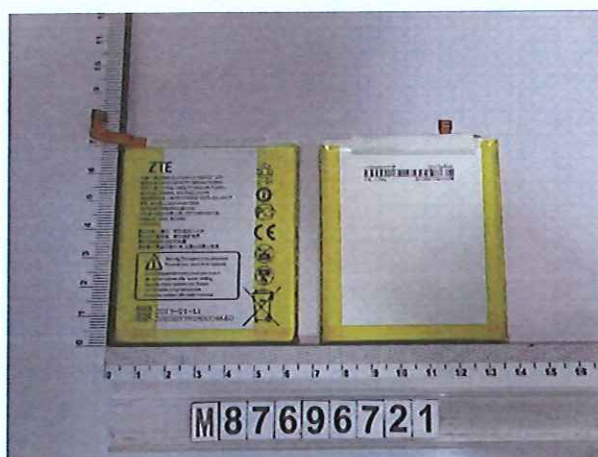
Pony Testing International Group

Report ID: MNIWATOM87696721 Page 2 of 12

### Notes:

- N1~N5, N11~N14: Cells at first cycle in fully charged states;  
 N6~N10: Cells at first cycle at 50% of the design rated capacity;  
 N15~N24: Cells at first cycle in fully discharged states;  
 C1~C5, C11~C14: Cells after 25 cycles ending in fully charged states;  
 C6~C10: Cells after 25 cycles at 50% of the design rated capacity;  
 C15~C24: Cells after 25 cycles ending in fully discharged states.

### IV、PHOTO OF THE SAMPLE



Authenticate the photo on original report only



Pony Testing International Group

Report ID: MNIWATOM87696721 Page 3 of 12

## V、TEST METHOD

Tests T.1 to T.5 shall be conducted in sequence on the same cell or battery. Tests T.6 and T.8 shall be conducted using not otherwise tested cells or batteries. Test T.7 may be conducted using undamaged batteries previously used in tests T.1 to T.5 for purposes of testing on cycled batteries.

In order to quantify the mass loss, the following procedure is provided:

$$\text{Mass loss(\%)} = (M_1 - M_2) / M_1 \times 100$$

Where  $M_1$  is the mass before the test and  $M_2$  is the mass after the test. When mass loss does not exceed the values in Table below, it shall be considered as “no mass loss”.

Mass M of cell or battery	Mass loss limit
$M < 1\text{g}$	0.5%
$1\text{g} \leq M \leq 75\text{g}$	0.2%
$M > 75\text{g}$	0.1%

### T.1 Altitude simulation

Test cells and batteries shall be stored at a pressure of 11.6 kPa or less for at least six hours at ambient temperature ( $20 \pm 5^\circ\text{C}$ ).

Cells and batteries meet this requirement if there is no leakage, no venting, no disassembly, no rupture and no fire and if the open circuit voltage of each test cell or battery after testing is not less than 90% of its voltage immediately prior to this procedure. The requirement relating to voltage is not applicable to test cells and batteries at fully discharged states.

### T.2 Thermal test

Test cells and batteries are to be stored for at least six hours at a test temperature equal to  $72 \pm 2^\circ\text{C}$ , followed by storage for at least six hours at a test temperature equal to  $-40 \pm 2^\circ\text{C}$ . The maximum time interval between test temperature extremes is 30 minutes. This procedure is to be repeated until 10 total cycles are complete, after which all test cells and batteries are to be stored for 24 hours at ambient temperature ( $20 \pm 5^\circ\text{C}$ ). For large cells and batteries the duration of exposure to the test temperature extremes should be at least 12 hours.

Cells and batteries meet this requirement if there is no leakage, no venting, no disassembly, no rupture and no fire and if the open circuit voltage of each test cell or battery after testing is not less than 90% of its voltage immediately prior to this procedure. The requirement relating to voltage is not applicable to test cells and batteries at fully discharged states.





Pony Testing International Group

Report ID: MNIWATOM87696721 Page 4 of 12

### T.3 Vibration

Cells and batteries are firmly secured to the platform of the vibration machine without distorting the cells in such a manner as to faithfully transmit the vibration. The vibration shall be a sinusoidal waveform with a logarithmic sweep between 7 Hz and 200 Hz and back to 7 Hz traversed in 15 minutes. This cycle shall be repeated 12 times for a total of 3 hours for each of three mutually perpendicular mounting positions of the cell. One of the directions of vibration must be perpendicular to the terminal face.

The logarithmic frequency sweep shall differ for cells and batteries with a gross mass of not more than 12 kg (cells and small batteries), and for batteries with a gross mass of more than 12 kg (large batteries).

For cells and small batteries: from 7 Hz a peak acceleration of 1  $g_n$  is maintained until 18 Hz is reached. The amplitude is then maintained at 0.8 mm (1.6 mm total excursion) and the frequency increased until a peak acceleration of 8  $g_n$  occurs (approximately 50 Hz).

A peak acceleration of 8  $g_n$  is then maintained until the frequency is increased to 200 Hz.

For large batteries: from 7 Hz to a peak acceleration of 1  $g_n$  is maintained until 18 Hz is reached. The amplitude is then maintained at 0.8 mm (1.6 mm total excursion) and the frequency increased until a peak acceleration of 2  $g_n$  occurs (approximately 25 Hz). A peak acceleration of 2  $g_n$  is then maintained until the frequency is increased to 200 Hz.

Cells and batteries meet this requirement if there is no leakage, no venting, no disassembly, no rupture and no fire during the test and after the test and if the open circuit voltage of each test cell or battery after testing in its perpendicular mounting position is not less than 90% of its voltage immediately prior to this procedure. The requirement relating to voltage is not applicable to test cells and batteries at fully discharged states.

### T.4 Shock

Test cells and batteries shall be secured to the testing machine by means of a rigid mount which will support all mounting surfaces of each test battery.

Each cell shall be subjected to a half-sine shock of peak acceleration of 150  $g_n$  and pulse duration of 6 milliseconds. Alternatively, large cells may be subjected to a half-sine shock of peak acceleration of 50  $g_n$  and pulse duration of 11 milliseconds.

Each battery shall be subjected to a half-sine shock of peak acceleration depending on the mass of the battery. The pulse duration shall be 6 milliseconds for small batteries and 11 milliseconds for large batteries. The formulas below are provided to calculate the appropriate minimum peak accelerations.





Pony Testing International Group

Report ID: MNIWATOM87696721 Page 5 of 12

Battery	Minimum peak acceleration	Pulse duration
Small batteries	150 g <sub>n</sub> or result of formula	6 ms
	$\text{Acceleration}(g_n) = \sqrt{\left(\frac{100850}{\text{mass}^*}\right)}$ Whichever is smaller	
Large batteries	50 g <sub>n</sub> or result of formula	11 ms
	$\text{Acceleration}(g_n) = \sqrt{\left(\frac{30000}{\text{mass}^*}\right)}$ Whichever is smaller	

\* Mass is expressed in kilograms.

Each cell or battery shall be subjected to three shocks in the positive direction and to three shocks in the negative direction in each of three mutually perpendicular mounting positions of the cell or battery for a total of 18 shocks.

Cells and batteries meet this requirement if there is no leakage, no venting, no disassembly, no rupture and no fire and if the open circuit voltage of each test cell or battery after testing is not less than 90% of its voltage immediately prior to this procedure. The requirement relating to voltage is not applicable to test cells and batteries at fully discharged states.

#### T.5 External short circuit

The cell or battery to be tested shall be heated for a period of time necessary to reach a homogeneous stabilized temperature of  $57 \pm 4^\circ\text{C}$ , measured on the external case. This period of time depends on the size and design of the cell or battery and should be assessed and documented. If this assessment is not feasible, the exposure time shall be at least 6 hours for small cells and small batteries, and 12 hours for large cells and large batteries. Then the cell or battery at  $57 \pm 4^\circ\text{C}$  shall be subjected to one short circuit condition with a total external resistance of less than 0.1 ohm. This short circuit condition is continued for at least one hour after the cell or battery external case temperature has returned to  $57 \pm 4^\circ\text{C}$ , or in the case of the large batteries, has decreased by half of the maximum temperature increase observed during the test and remains below that value. The short circuit and cooling down phases shall be conducted at least at ambient temperature.

Cells and batteries meet this requirement if their external temperature does not exceed  $170^\circ\text{C}$  and there is no disassembly, no rupture and no fire during the test and within six hours after the test.





Pony Testing International Group

Report ID: MNIWATOM87696721 Page 6 of 12

## T.6 Impact / Crush

Impact (applicable to cylindrical cells not less than 18 mm in diameter)

The test sample cell or component cell is to be placed on a flat smooth surface. A  $15.8 \text{ mm} \pm 0.1 \text{ mm}$  diameter, at least 6 cm long, or the longest dimension of the cell, whichever is greater, Type 316 stainless steel bar is to be placed across the centre of the sample. A  $9.1 \text{ kg} \pm 0.1 \text{ kg}$  mass is to be dropped from a height of  $61 \pm 2.5 \text{ cm}$  at the intersection of the bar and sample in a controlled manner using a near frictionless, vertical sliding track or channel with minimal drag on the falling mass. The vertical track or channel used to guide the falling mass shall be oriented 90 degrees from the horizontal supporting surface.

The test sample is to be impacted with its longitudinal axis parallel to the flat surface and perpendicular to the longitudinal axis of the  $15.8 \text{ mm} \pm 0.1 \text{ mm}$  diameter curved surface lying across the centre of the test sample. Each sample is to be subjected to only a single impact.

Crush (applicable to prismatic, pouch, coin/button cells and cylindrical cells less than 18 mm in diameter)

A cell or component cell is to be crushed between two flat surfaces. The crushing is to be gradual with a speed of approximately 1.5 cm/s at the first point of contact. The crushing is to be continued until the first of the three options below is reached.

- (a) The applied force reaches  $13 \text{ kN} \pm 0.78 \text{ kN}$ ;
- (b) The voltage of the cell drops by at least 100 mV; or
- (c) The cell is deformed by 50% or more of its original thickness.

Once the maximum pressure has been obtained, the voltage drops by 100 mV or more, or the cell is deformed by at least 50% of its original thickness, the pressure shall be released.

A prismatic or pouch cell shall be crushed by applying the force to the widest side. A button/coin cell shall be crushed by applying the force on its flat surfaces. For cylindrical cells, the crush force shall be applied perpendicular to the longitudinal axis.

Each test cell or component cell is to be subjected to one crush only. The test sample shall be observed for a further 6 h. The test shall be conducted using test cells or component cells that have not previously been subjected to other tests.

Cells and component cells meet this requirement if their external temperature does not exceed  $170^\circ\text{C}$  and there is no disassembly and no fire during the test and within six hours after this test.

## T.7 Overcharge

The charge current shall be twice the manufacturer's recommended maximum continuous charge current. The minimum voltage of the test shall be as follows:



Pony Testing International Group

Report ID: MNIWATOM87696721 Page 7 of 12

- (a) When the manufacturer's recommended charge voltage is not more than 18V, the minimum voltage of the test shall be the lesser of two times the maximum charge voltage of the battery or 22V.
- (b) When the manufacturer's recommended charge voltage is more than 18V, the minimum voltage of the test shall be 1.2 times the maximum charge voltage.

Tests are to be conducted at ambient temperature; the duration of the test shall be 24 hours.

Rechargeable batteries meet this requirement if there is no disassembly and no fire during the test and within seven days after the test.

#### T.8 Forced discharge

Each cell shall be forced discharged at ambient temperature by connecting it in series with a 12V D.C. power supply at an initial current equal to the maximum discharge current specified by the manufacturer.

The specified discharge current is to be obtained by connecting a resistive load of the appropriate size and rating in series with the test cell. Each cell shall be forced discharged for a time interval (in hours) equal to its rated capacity divided by the initial test current (in ampere).

Primary or rechargeable cells meet this requirement if there is no disassembly and no fire during the test and within seven days after the test.

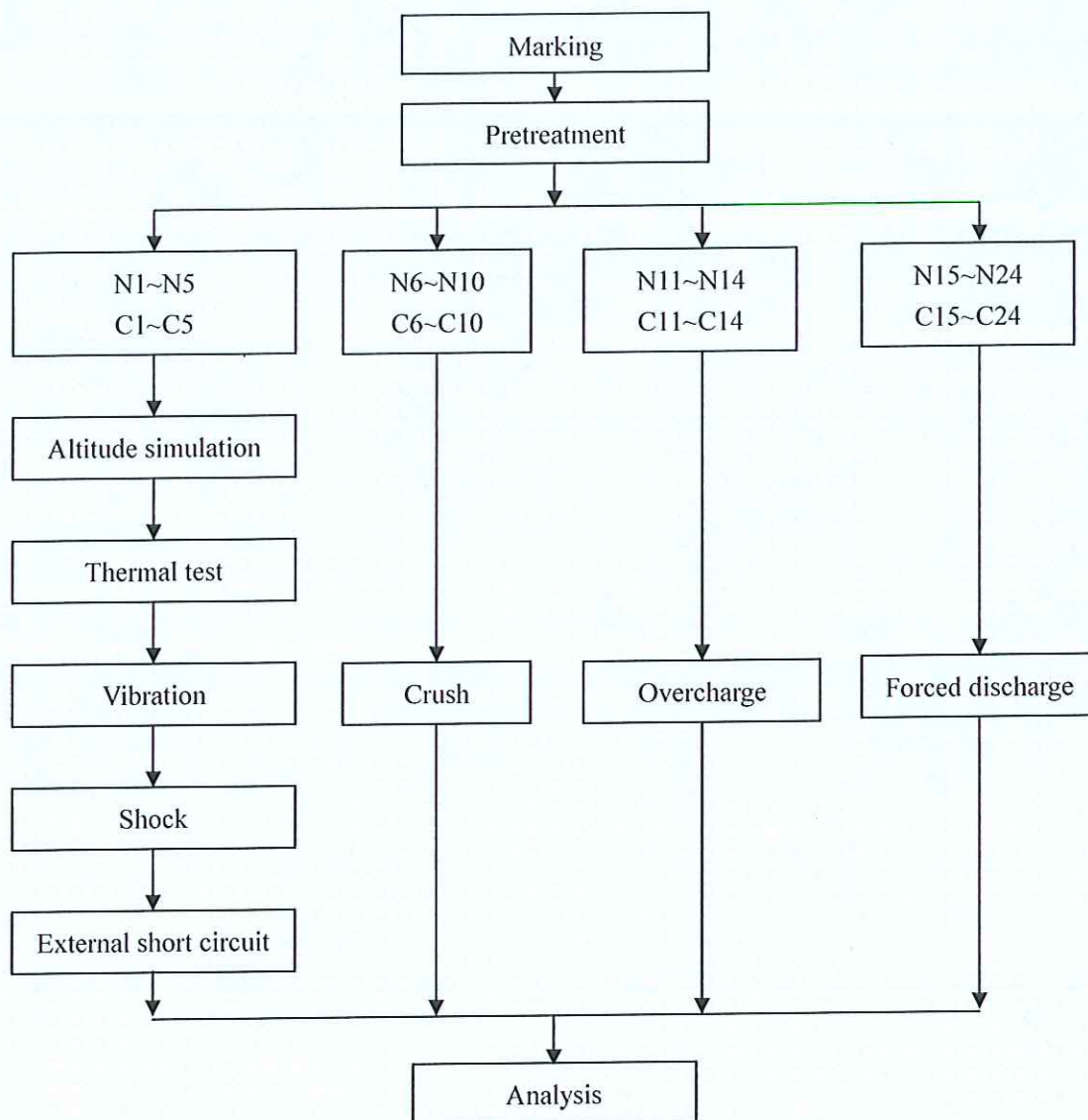




Pony Testing International Group

Report ID: MNIWATOM87696721 Page 8 of 12

## VI、TEST PROCEDURE



## VII、TEST APPARATUS

IE-0121 High precision battery test system

IE-0434 Vacuum drying oven

IE-0090 Multimeter

IE-0824 Tableland air pressure gauge

IE-0259 Electronic balance

IE-0281 Temperature controlled short circuit testing machine

IE-0664 Pneumatic vertical impact testing platform

IE-0328 Rapid temperature change test chamber

IE-0503 Electric vibration test system

IE-0185 The digital thermometer (TC)

IE-0198 Battery crush testing machine

IE-0511 Programmable DC power source



Pony Testing International Group

Report ID: MNIWATOM87696721 Page 9 of 12

## VIII、DATA

### 1. Altitude simulation

No.	Pre-test		After test		Mass loss (%)	Voltage loss (%)	Whether leakage, venting, disassembly, rupture, fire (Y/N)
	Mass (g)	Voltage (V)	Mass (g)	Voltage (V)			
N1	51.658	4.41	51.658	4.41	0.000	0.000	N
N2	51.602	4.40	51.602	4.40	0.000	0.000	N
N3	51.816	4.41	51.816	4.40	0.000	0.227	N
N4	51.728	4.40	51.728	4.40	0.000	0.000	N
N5	51.622	4.40	51.622	4.40	0.000	0.000	N
C1	51.037	4.40	51.037	4.40	0.000	0.000	N
C2	51.609	4.41	51.609	4.40	0.000	0.227	N
C3	51.671	4.40	51.671	4.39	0.000	0.227	N
C4	51.003	4.40	51.003	4.40	0.000	0.000	N
C5	51.641	4.40	51.641	4.39	0.000	0.227	N

### 2. Thermal test

No.	Pre-test		After test		Mass loss (%)	Voltage loss (%)	Whether leakage, venting, disassembly, rupture, fire (Y/N)
	Mass (g)	Voltage (V)	Mass (g)	Voltage (V)			
N1	51.658	4.41	51.656	4.338	0.004	1.633	N
N2	51.602	4.40	51.602	4.337	0.000	1.432	N
N3	51.816	4.40	51.816	4.337	0.000	1.432	N
N4	51.728	4.40	51.728	4.333	0.000	1.523	N
N5	51.622	4.40	51.621	4.333	0.002	1.523	N
C1	51.037	4.40	51.035	4.333	0.004	1.523	N
C2	51.609	4.40	51.607	4.337	0.004	1.432	N
C3	51.671	4.39	51.671	4.335	0.000	1.253	N
C4	51.003	4.40	51.003	4.327	0.000	1.659	N
C5	51.641	4.39	51.641	4.327	0.000	1.435	N





Pony Testing International Group

Report ID: MNIWATOM87696721 Page 10 of 12

## 3. Vibration

No.	Pre-test		After test		Mass loss (%)	Voltage loss (%)	Whether leakage, venting, disassembly, rupture, fire (Y/N)
	Mass (g)	Voltage (V)	Mass (g)	Voltage (V)			
N1	51.656	4.338	51.654	4.338	0.004	0.000	N
N2	51.602	4.337	51.601	4.336	0.002	0.023	N
N3	51.816	4.337	51.815	4.336	0.002	0.023	N
N4	51.728	4.333	51.725	4.333	0.006	0.000	N
N5	51.621	4.333	51.618	4.333	0.006	0.000	N
C1	51.035	4.333	51.033	4.331	0.004	0.046	N
C2	51.607	4.337	51.606	4.336	0.002	0.023	N
C3	51.671	4.335	51.670	4.335	0.002	0.000	N
C4	51.003	4.327	51.000	4.326	0.006	0.023	N
C5	51.641	4.327	51.638	4.326	0.006	0.023	N

## 4. Shock

No.	Pre-test		After test		Mass loss (%)	Voltage loss (%)	Whether leakage, venting, disassembly, rupture, fire (Y/N)
	Mass (g)	Voltage (V)	Mass (g)	Voltage (V)			
N1	51.654	4.338	51.653	4.337	0.002	0.023	N
N2	51.601	4.336	51.598	4.336	0.006	0.000	N
N3	51.815	4.336	51.815	4.335	0.000	0.023	N
N4	51.725	4.333	51.723	4.332	0.004	0.023	N
N5	51.618	4.333	51.617	4.332	0.002	0.023	N
C1	51.033	4.331	51.031	4.330	0.004	0.023	N
C2	51.606	4.336	51.605	4.335	0.002	0.023	N
C3	51.670	4.335	51.667	4.333	0.006	0.046	N
C4	51.000	4.326	51.000	4.326	0.000	0.000	N
C5	51.638	4.326	51.636	4.325	0.004	0.023	N



Pony Testing International Group

Report ID: MNIWATOM87696721 Page 11 of 12

## 5. External short circuit

No.	Peak temperature (°C)	Whether disassembly, rupture, fire (Y/N)
N1	57.3	N
N2	57.5	N
N3	57.6	N
N4	57.4	N
N5	57.6	N
C1	57.5	N
C2	57.4	N
C3	57.6	N
C4	57.4	N
C5	57.6	N

## 6. Crush

No.	Peak temperature (°C)	Whether disassembly, fire (Y/N)
N6	20.8	N
N7	20.9	N
N8	20.7	N
N9	20.9	N
N10	20.7	N
C6	20.8	N
C7	20.9	N
C8	20.8	N
C9	20.7	N
C10	20.8	N





Pony Testing International Group

Report ID: MNIWATOM87696721 Page 12 of 12

## 7. Overcharge

No.	Whether disassembly, fire (Y/N)
N11	N
N12	N
N13	N
N14	N
C11	N
C12	N
C13	N
C14	N

## 8. Forced discharge

No.	Whether disassembly, fire (Y/N)
N15	N
N16	N
N17	N
N18	N
N19	N
N20	N
N21	N
N22	N
N23	N
N24	N
C15	N
C16	N
C17	N
C18	N
C19	N
C20	N
C21	N
C22	N
C23	N
C24	N

\*\*\* End of report \*\*\*