



KING'S LEAP

CLARK FILIO

HEAVEN SHIP

Priestess of the Moon, 2020
Oil on canvas
20 x 16 inches (51 x 41 cm)
[INQUIRE](#)



Paradise Lost, After Dore, 2020
Oil on canvas
20 x 16 inches (51 x 41 cm)
[INQUIRE](#)



Bellagio, After Pejman, 2020
Oil on canvas
20 x 16 inches (51 x 41 cm)
[INQUIRE](#)



Samson, After Espalter, 2020
Oil on canvas
20 x 16 inches (51 x 41 cm)
[INQUIRE](#)



Soldier, After Da Zhong, 2020
Oil on canvas
20 x 16 inches (51 x 41 cm)
[INQUIRE](#)



Sack of Rome, After Sylvestre, 2020
Oil on canvas
20 x 16 inches (51 x 41 cm)
[INQUIRE](#)



Bella and Miq, 2020
Oil on canvas
20 x 16 inches (51 x 41 cm)
[INQUIRE](#)



Ixion in Tartarus, After Picart, 2020
Oil on canvas
20 x 16 inches (51 x 41 cm)
[INQUIRE](#)





Clark Filio, *Heaven Ship* [Installation view]



Children of Gont, 2020
Oil on canvas
98 x 144 inches (249 x 366 cm)
[INQUIRE](#)



Children of Gont, 2020



Children of Gont, 2020 [detail]



Children of Gont, 2020 [detail]



Children of Gont, 2020 [detail]



Clark Filio, *Heaven Ship* [Installation view]



Clark Filio, *Heaven Ship* [Installation view]

Excelsior, 2020
Oil on canvas
78 x 54 inches (198 x 137 cm)
[INQUIRE](#)





Excelsior, 2020 [detail]



Clark Filio, *Heaven Ship* [Installation view]



Clark Filio, *Heaven Ship* [Installation view]

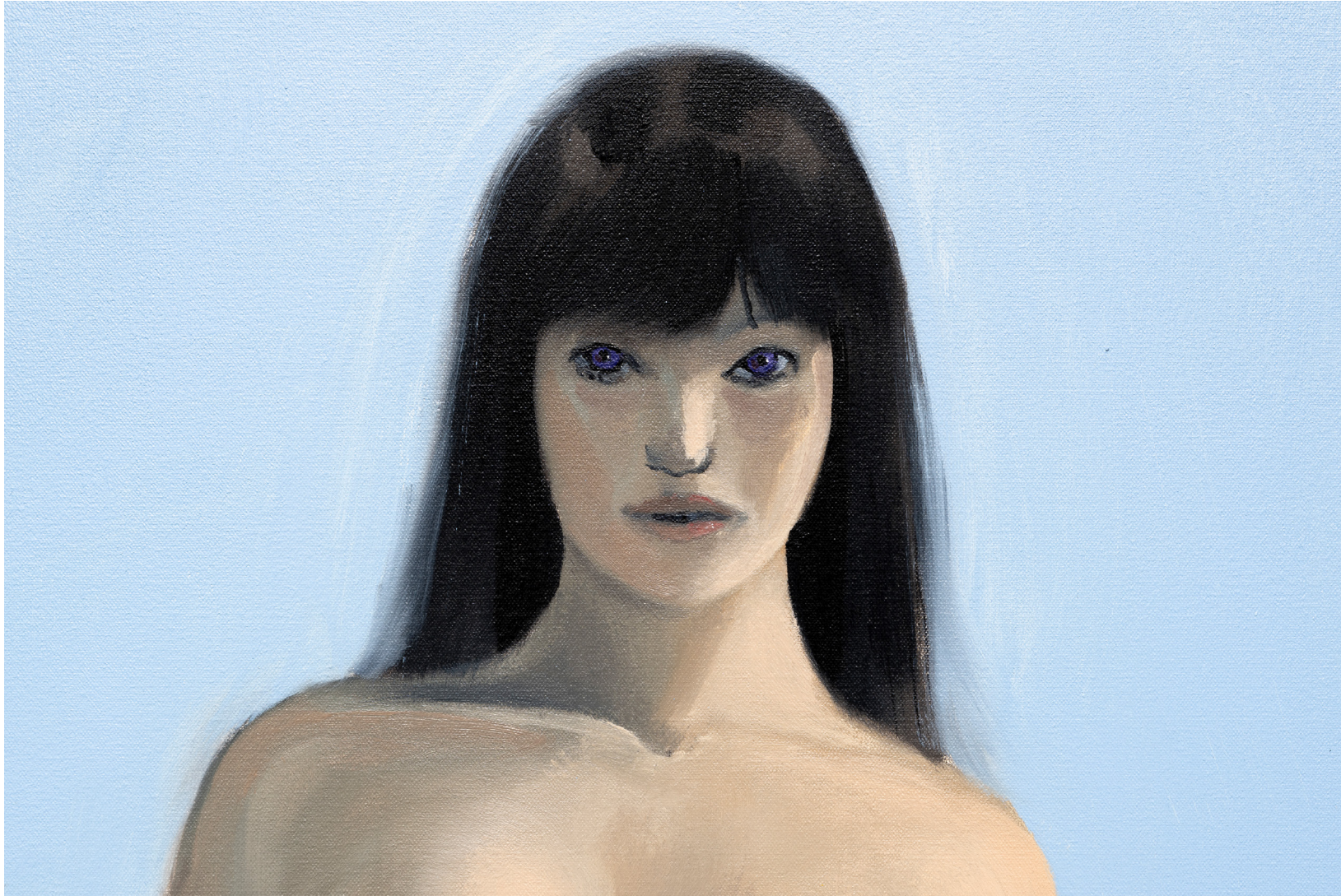


The Baleful Ker, 2020
Oil on canvas
78 x 54 inches (198 x 137 cm)
[INQUIRE](#)





The Baleful Ker, 2020 [detail]



The Baleful Ker, 2020 [detail]