



**ARTWORKS  
THEATRE**

theatre

music

dance

Te whare tapere o Waiheke

comedy

community



## T H E A T R E

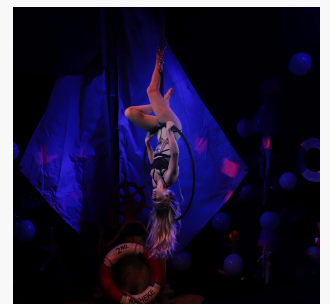
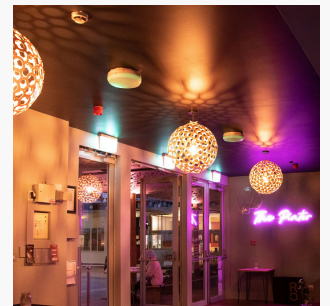
Artworks Theatre is a vibrant community theatre. Visiting acts always tell us how much they love the theatre space, our quirky greenroom, and the passionate support of our management team.



## SHOWTIME PACKAGE

- Performance hire - 3hrs
- Set up/Tech & Dress - 6hrs
- Technician - 4hrs
- Duty Manager - 4hrs
- Venue clean pre+post show
- Box office & ticketing services
- Fully staffed Front of House
- Post show reconciliation
- 50% marketing incl. socials, local papers and mailchimp

**\$550 / \$300 EACH  
NIGHT AFTER + GST**



To keep our packages as low as possible, we follow a ticket commission structure. Read more on page 6.

# MUSIC

Artworks provides a fun and welcoming vibe for music gigs. Whether you're after an intimate seated show, or a foot stomping dance party, we provide a beautiful venue in the heart of Oneroa.



## SOLO / SMALL BAND PACKAGE

Performance hire - 2hrs  
Set up/Rehearsals - 2hrs  
Lighting Technician - 2hrs to set lights  
Duty Manager - 3hrs  
Venue clean pre+post show  
Box office & ticketing services  
Fully staffed Front of House  
Post show reconciliation  
50% marketing incl. socials, local papers and mailchimp

**\$400 +GST**

## BIG BAND / FIESTA PACKAGE

Performance hire - 3hrs  
Set up/Rehearsals - 4hrs  
Lighting Technician - 2 hrs to set lights  
Duty Manager - 4hrs  
Venue clean pre+post show  
Box office & ticketing services  
Fully staffed Front of House  
Post show reconciliation  
50% marketing incl. socials, local papers and mailchimp.

**\$500 +GST**



**Please note that Artworks doesn't provide an in-house sound technician. We strongly recommend bringing an external audio technician unless you can run your own audio. If you need a contact, ask us about local operators.**

*To keep our packages as low as possible, we follow a ticket commission structure. Read more on page 6.*

# DANCE

Artworks Theatre provides a welcoming auditorium and stage for dance shows, interactive performances and instructional sessions.



## MOVEMENT PACKAGE

Performance Hire - 2hrs  
Technician - 2hrs  
Set up/Rehearsals - 2hrs  
Duty Manager - 3hrs  
Venue clean pre+post show  
Box office & ticketing services  
Fully staffed Front of House  
Post show reconciliation  
50% marketing incl. socials,  
local papers and mailchimp

**\$410 +GST**



# COMEDY

We love Comedy shows! Local improv groups, big touring names and more - our venue is warm and welcoming and perfect for generating cheer.



## STAND UP PACKAGE

Performance Hire - 2hrs  
Technician - 2hrs  
Set up/Rehearsals - 2hrs  
Duty Manager - 3hrs  
Venue clean pre+post show  
Box office & ticketing services  
Fully staffed Front of House  
Post show reconciliation  
50% marketing incl. socials,  
local papers and mailchimp

**\$410 +GST**



# OUR SPACES

We've got three distinct spaces for you to hire. When you hire the auditorium or the whole space, you also have access to our much-loved quirky greenroom!

## THE AUDITORIUM



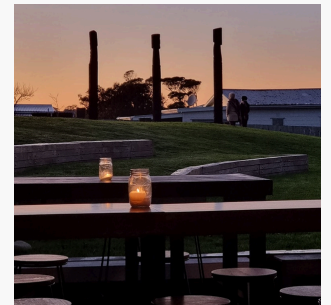
Our largest indoor space, which can seat up to 110 people, with a capacity of 250 standing. We can arrange this in a variety of ways to suit the vibe and size of your show. Each hire package listed above covers hire for the entire venue, including auditorium, greenroom, and Pinter Bar.



## THE PINTER BAR



A multi-purpose space, our cosy Pinter Bar features bench seats, wooden decor and removable furniture and can seat 40 people and hold 80 standing. This includes use of our outdoor deck, within our liquor license area. Hire for the Pinter Bar depends on the complexity of your event, please get in touch to discuss.



## THE COURTYARD



The heart of the Artworks precinct. This open space offers a great atmosphere day and night and hosts diverse events. Power is accessible from multiple points of the courtyard. Please note that to use the courtyard an event permit is required. This is not included in standard hire packages.



# C O M M U N I T Y

Artworks Theatre is Waiheke's Community Theatre and Performing Arts centre. The vibrant and creative community of Waiheke is what makes this island such a special place to be.

## COMMUNITY EVENTS



Are you a Waiheke local, looking to put on a local production? Do you have an idea for a gathering, festival, music show, charity fundraiser or more? Have a chat with our manager! Some of the ways we can help...

- Potential Discounts / Special Packages
- Event Management assistance
- Help with event permits
- Joint Ventures or production support
- Social media and marketing connections
- Ideas for, or a second eye over, funding applications
- Plus more! Get in touch\* to chat.

## SOME OF OUR HIGHLIGHTS

You've probably been to some of our Community events before! We have quite a few scattered throughout the year. Some of our favourites include:

Creative Sunday's - events in the courtyard every Sunday through February!

SOLO Short Play Festival - local artists producing solo theatre

Waiheke Short Play Festival - local ensembles producing short form theatre

Junk To Funk - a waste-saving fashion show!

MOTU Matariki - a celebration of Matariki

The HeART of Christmas - the Waiheke-wide celebration of Christmas.



Email Kara on [info@artworkstheatre.org.nz](mailto:info@artworkstheatre.org.nz), or stop in during our box office hours on Tuesdays 1-3pm and Thursdays 10-12pm to chat.

If you feel drawn to helping out or taking part in any of our existing community events, we'd love to have you!

# PLUS THE OTHER THINGS

Is there something else you need for your show? No worries!  
We've got you covered.



## POSTER PACKAGES

Our poster packages include distribution to all the hottest spots, plus we'll take them down!

\$170 Package: 2x A1 synthetic, 1 x A2 synthetic & 10 x A4

\$250 Package: 1 x AO syn / 3 x A1 syn / 1 x A2 syn / 10 x A4 / 15 x A6



## THEATRE COMMISSION

To keep our packages as low as possible, we follow a ticket commission structure.

- 0-25 tickets sold: 0%
- 26-50 tickets sold: 3%
- 51-100 tickets sold: 5%
- 101+ tickets sold: 7%



## OPTIONAL ADD-ONS

- Extra Rehearsals - \$25 per hour
- Extra Tech - \$35 per hour
- Digital Projector - \$30 one off
- Security - \$50 per hour, per guard

Poster Design - Chat to us.

Get in touch for our tech & equipment list.



# NEED A GENERIC SPACE HIRE?

Keen to rehearse, host a class, launch your book, or take a conference? We have a variety of ways we can help!



## CASUAL HIRE

The theatre is available for casual hire for \$30 an hour for rehearsals or classes, for up to 6 hours.

For over 6 hours, there's a daily cap for \$200 a day.



## LIQUOR LICENSES

We are a licensed venue! Our liquor license stipulates that in order for the bar to be open, we must be hosting a public performance - unfortunately we can't open the bar for a conference, rehearsal or meeting. Our venue has a strict midnight closing time.

## MEET THE TEAM!

When you hire Artworks, you get an experienced team behind you. Your event will be managed by our theatre manager Kara or event coordinator Kashmir, supported by our friendly support staff, Zach and Nadi, alongside a trained volunteer team. For any questions, email [manager@artworkstheatre.org.nz](mailto:manager@artworkstheatre.org.nz).



K A R A



K A S H M I R



Z A C H



N A D I