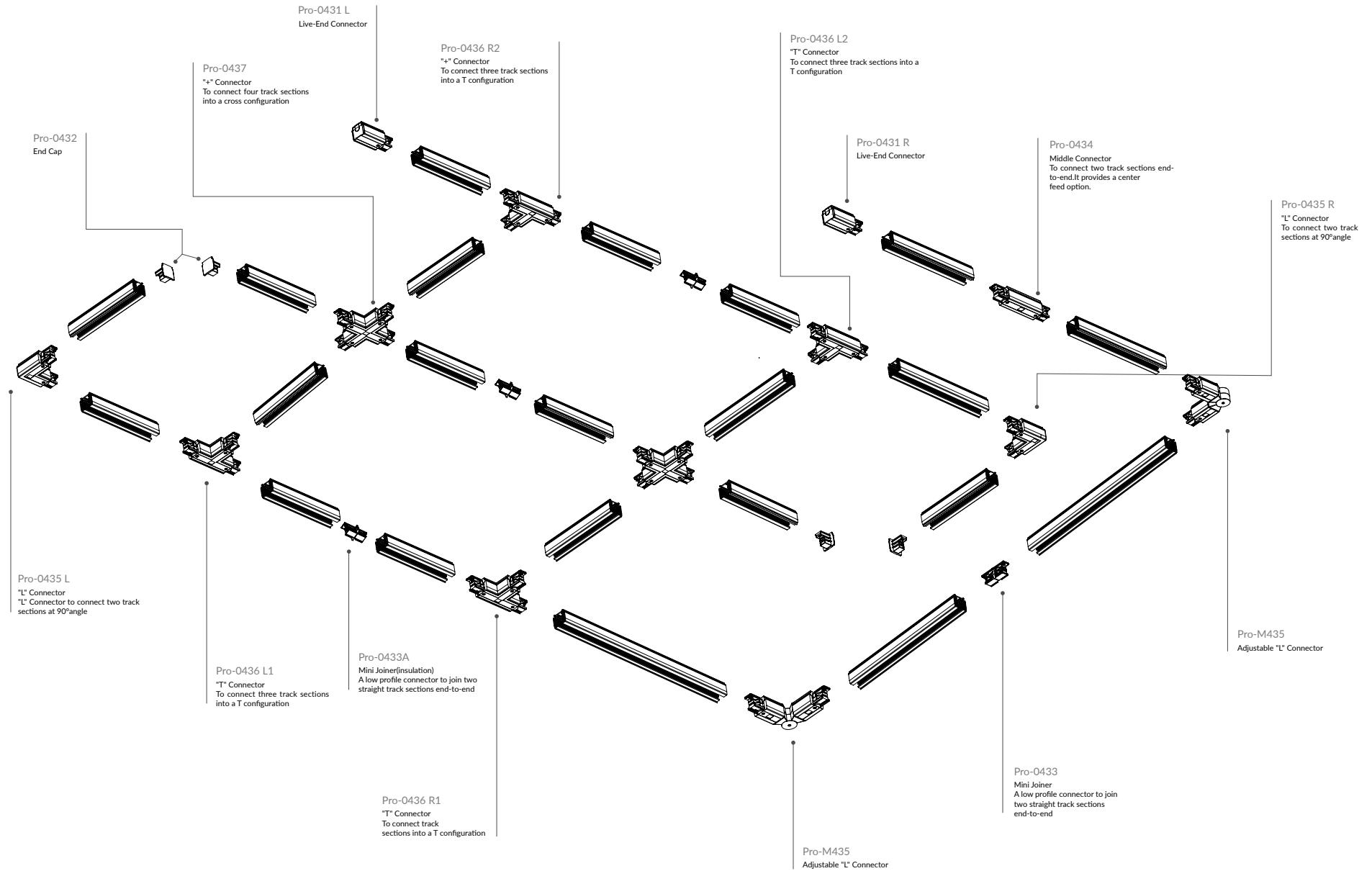
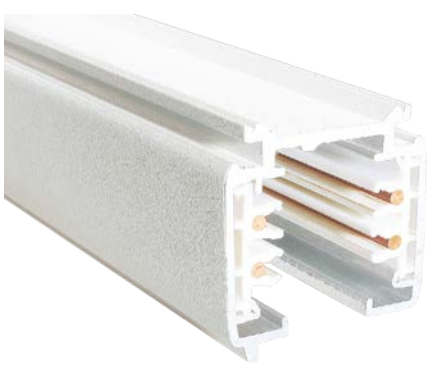
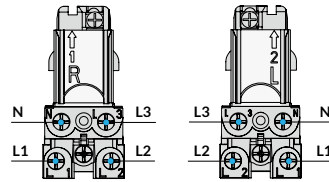
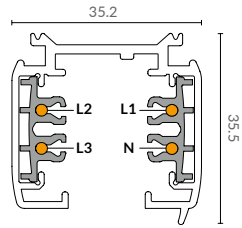


Track System



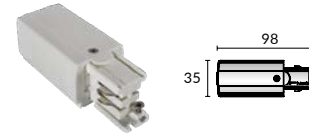


3 Circuits Track System



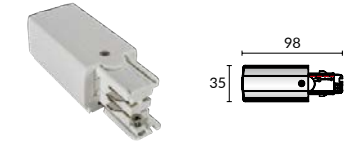
Model No.	Track length	Shell Material	Colour	Package
Pro-0410-W / Pro-0410-S / Pro-0410-B	1M track actual one meter.(100cm)	Aluminium Extrusion	White <input type="checkbox"/> Silver <input type="checkbox"/> Black <input type="checkbox"/>	1 / 12
Pro-0415-W / Pro-0415-S / Pro-0415-B	1.5M track actual one meter. (150cm)	Aluminium Extrusion	White <input type="checkbox"/> Silver <input type="checkbox"/> Black <input type="checkbox"/>	1 / 12
Pro-0420-W / Pro-0420-S / Pro-0420-B	2M track actual one meter.(200cm)	Aluminium Extrusion	White <input type="checkbox"/> Silver <input type="checkbox"/> Black <input type="checkbox"/>	1 / 12
Pro-0430-W / Pro-0430-S / Pro-0430-B	3M track actual one meter.(300cm)	Aluminium Extrusion	White <input type="checkbox"/> Silver <input type="checkbox"/> Black <input type="checkbox"/>	1 / 8
Pro-04400-W / Pro-04000-S / Pro-04000-B	4M track actual one meter.(400cm)	Aluminium Extrusion	White <input type="checkbox"/> Silver <input type="checkbox"/> Black <input type="checkbox"/>	1 / 6

Live-End Connector



Model No.	Package	Colour
Pro-0431 L-W	1 / 150	White <input type="checkbox"/>
Pro-0431 L-S	1 / 150	Silver <input type="checkbox"/>
Pro-0431 L-B	1 / 150	Black <input type="checkbox"/>

Live-End Connector



Model No.	Package	Colour
Pro-0431 R-W	1 / 150	White <input type="checkbox"/>
Pro-0431 R-S	1 / 150	Silver <input type="checkbox"/>
Pro-0431 R-B	1 / 150	Black <input type="checkbox"/>

Mini Joiner



Model No.	Package	Colour
Pro-0433-W	1 / 400	White <input type="checkbox"/>
Pro-0433-S	1 / 400	Silver <input type="checkbox"/>
Pro-0433-B	1 / 400	Black <input type="checkbox"/>

Mini Joiner(insulation)



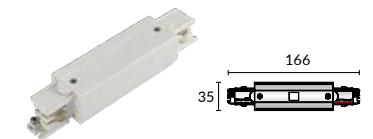
Model No.	Package	Colour
Pro-0433A-W	1 / 150	White <input type="checkbox"/>
Pro-0433A-S	1 / 150	Silver <input type="checkbox"/>
Pro-0433A-B	1 / 150	Black <input type="checkbox"/>

End Cap



Model No.	Package	Colour
Pro-0432-W	1 / 500	White <input type="checkbox"/>
Pro-0432-S	1 / 500	Silver <input type="checkbox"/>
Pro-0432-B	1 / 500	Black <input type="checkbox"/>

Mini Joiner(insulation)



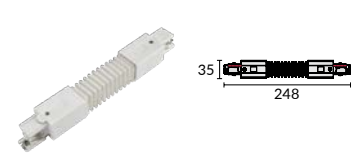
Model No.	Package	Colour
Pro-0434-W	1 / 150	White <input type="checkbox"/>
Pro-0434-S	1 / 150	Silver <input type="checkbox"/>
Pro-0434-B	1 / 150	Black <input type="checkbox"/>

Twisted "L" Connector



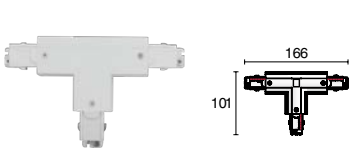
Model No.	Package	Colour
Pro-0438-W	1 / 154	White □
Pro-0438-S	1 / 154	Silver ■
Pro-0438-B	1 / 154	Black ■

Flexible Connector



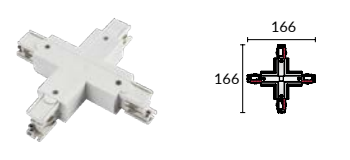
Model No.	Package	Colour
Pro-0439-W	1 / 119	White □
Pro-0439-S	1 / 119	Silver ■
Pro-0439-B	1 / 119	Black ■

Twisted "T" Connector(Left)



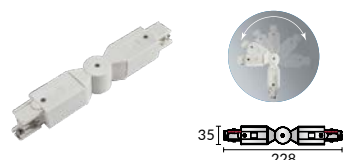
Model No.	Package	Colour
Pro-M436L-W	1 / 84	White □
Pro-M436L-S	1 / 84	Silver ■
Pro-M436L-B	1 / 84	Black ■

"+" Connector



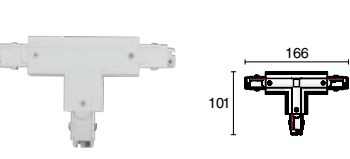
Model No.	Package	Colour
Pro-0437-W	1 / 60	White □
Pro-0437-S	1 / 60	Silver ■
Pro-0437-B	1 / 60	Black ■

Adjustable "L" Connector



Model No.	Package	Colour
Pro-0435-W	1 / 119	White □
Pro-0435-S	1 / 119	Silver ■
Pro-0435-B	1 / 119	Black ■

Twisted "T" Connector(Right)



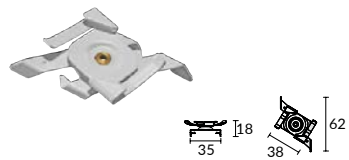
Model No.	Package	Colour
Pro-M436R-W	1 / 84	White □
Pro-M436R-S	1 / 84	Silver ■
Pro-M436R-B	1 / 84	Black ■

Ceiling mount, EZCLICK suspension kit with ROD



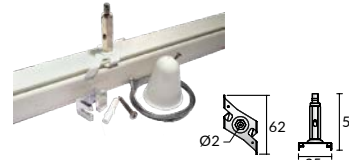
Model No.	Package	Colour
Pro-EZ0447-W	1 / 200	White □
Pro-EZ0447-S	1 / 200	Silver ■
Pro-EZ0447-B	1 / 200	Black ■

T-Bar, EZCLICK mounting kit



Model No.	Package	Colour
Pro-M146T-W	1 / 500	White □
Pro-M146T-S	1 / 500	Silver ■
Pro-M146T-B	1 / 500	Black ■

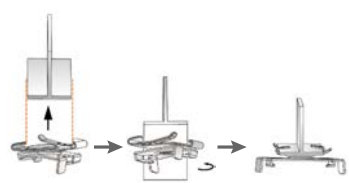
Ceiling mount, EZCLICK suspension kit with wire



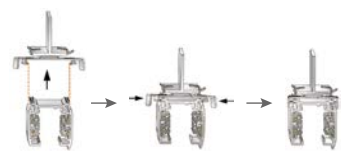
Model No.	Package	Colour
Pro-EZ0448-W	1 / 200	White □
Pro-EZ0448-S	1 / 200	Silver ■
Pro-EZ0448-B	1 / 200	Black ■

Suspension Mounting Kits Manual

1) Adjust the EZCLICK Mounting Kit's Direction, put it vertically into the T-Bar ceiling, and then rotate right and fix (as picture shows).

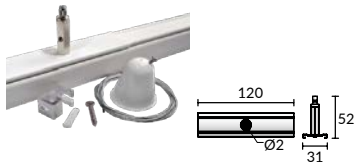


2) Adjust the EZCLICK Mounting Kit's Direction, put the track vertically into the EZCLICK Mounting Kit, rotate left and fix (like picture shows).



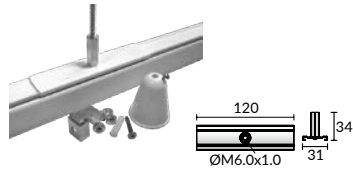
LED Track light

Ceiling Mount Reinforcement Plate with suspension wire



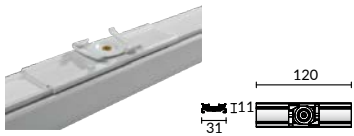
Model No.	Package	Colour
Pro-M147-W	1 / 200	White □
Pro-M147-S	1 / 200	Silver ■
Pro-M147-B	1 / 200	Black ■

Ceiling Mount Reinforcement Plate with suspension rod



Model No.	Package	Colour
Pro-M148-W	1 / 200	White □
Pro-M148-S	1 / 200	Silver ■
Pro-M148-B	1 / 200	Black ■

T-Bar, EZCLICK with Reinforcement Plate



Model No.	Package	Colour
Pro-M149-W	1 / 200	White □
Pro-M149-S	1 / 200	Silver ■
Pro-M149-B	1 / 200	Black ■

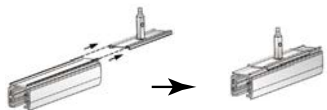
Suspension Hook



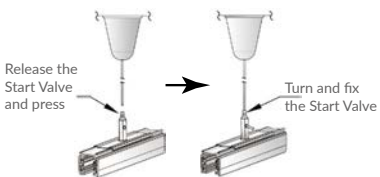
Model No.	Package	Colour
Pro-M142-W	1 / 500	White □
Pro-M142-S	1 / 500	Silver ■
Pro-M142-B	1 / 500	Black ■

Suspension Mounting Kits Manual

1) Put the Track into the EZCLICK Mounting Kits Parallely (As picture shows).

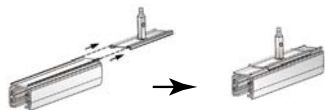


2) Release the start valve, press and get the wirerope through the EZCLICK Mounting Kit, rotate tight the start valve and lock the wirerope (like picture shows).

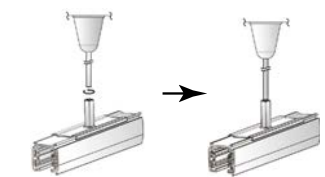


Suspension Mounting Kits Manual

1) Put the Track into the EZCLICK Kit Parallely (As picture shows).

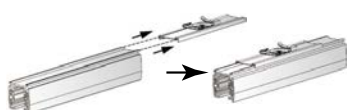


2) Rotate right the EZCLICK Kit and fix it on the rod.

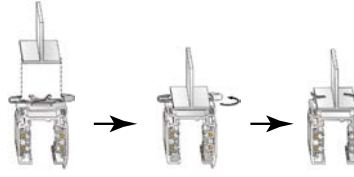


Suspension Mounting Kits Manual

1) Put the Track into the EZCLICK Mounting Kits parallely (As picture shows).



2) Adjust the EZCLICK Mounting Kit's direction, put the track vertically into the EZCLICK Mounting Kit, rotate right and fix (like picture shows).



Mechanical Adaptor

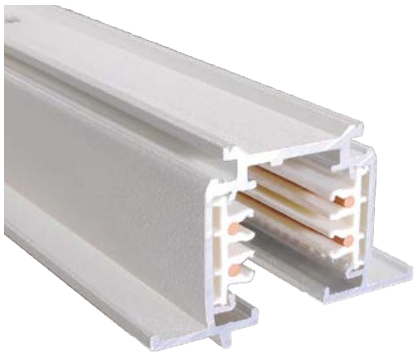


Model No.	Package	Colour
Pro-0449-W	1 / 100	White □
Pro-0449-S	1 / 100	Silver ■
Pro-0449-B	1 / 100	Black ■

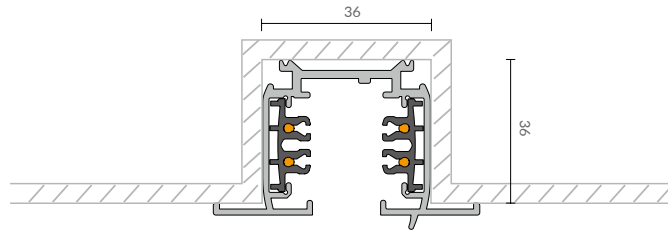
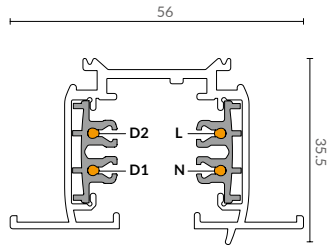
Suspension kit



Model No.	Package	Colour
Pro-045K-W	1 / 100	White □
Pro-045K-S	1 / 100	Silver ■
Pro-045K-B	1 / 100	Black ■



3 Circuits Recessed Track System



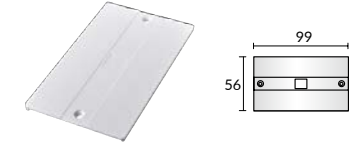
Model No.	Track length	Shell Material	Colour	Package
Pro-R410-W / Pro-R410-S / Pro-R410-B	1M track actual one meter.(100cm)	Aluminium Extrusion	White <input type="checkbox"/> Silver <input type="checkbox"/> Black <input type="checkbox"/>	1 / 9
Pro-R415-W / Pro-R415-S / Pro-R415-B	1.5M track actual one meter. (150cm)	Aluminium Extrusion	White <input type="checkbox"/> Silver <input type="checkbox"/> Black <input type="checkbox"/>	1 / 9
Pro-R420-W / Pro-R420-S / Pro-R420-B	2M track actual one meter.(200cm)	Aluminium Extrusion	White <input type="checkbox"/> Silver <input type="checkbox"/> Black <input type="checkbox"/>	1 / 9
Pro-R430-W / Pro-R430-S / Pro-R430-B	3M track actual one meter.(300cm)	Aluminium Extrusion	White <input type="checkbox"/> Silver <input type="checkbox"/> Black <input type="checkbox"/>	1 / 6
Pro-R4400-W / Pro-R4400-S / Pro-R4400-B	4M track actual one meter.(400cm)	Aluminium Extrusion	White <input type="checkbox"/> Silver <input type="checkbox"/> Black <input type="checkbox"/>	1 / 6

Live-end Connector Cover



Model No.	Package	Colour
Pro-R431-W	1 / 500	White <input type="checkbox"/>
Pro-R431-S	1 / 500	Silver <input type="checkbox"/>
Pro-R431-B	1 / 500	Black <input type="checkbox"/>

Live-End Connector



Model No.	Package	Colour
Pro-R434-W	1 / 400	White <input type="checkbox"/>
Pro-R434-S	1 / 400	Silver <input type="checkbox"/>
Pro-R434-B	1 / 400	Black <input type="checkbox"/>

Mini Joiner



Model No.	Package	Colour
Pro-R435-W	1 / 400	White <input type="checkbox"/>
Pro-R435-S	1 / 400	Silver <input type="checkbox"/>
Pro-R435-B	1 / 400	Black <input type="checkbox"/>

Mini Joiner(insulation)

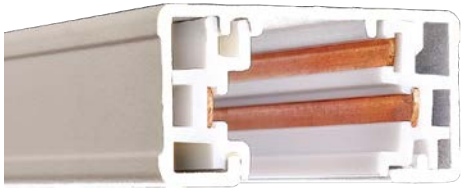


Model No.	Package	Colour
Pro-R436-W	1 / 400	White <input type="checkbox"/>
Pro-R436-S	1 / 400	Silver <input type="checkbox"/>
Pro-R436-B	1 / 400	Black <input type="checkbox"/>

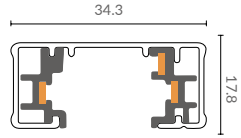
End Cap



Model No.	Package	Colour
Pro-R437-W	1 / 400	White <input type="checkbox"/>
Pro-R437-S	1 / 400	Silver <input type="checkbox"/>
Pro-R437-B	1 / 400	Black <input type="checkbox"/>

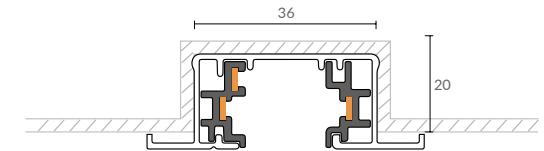
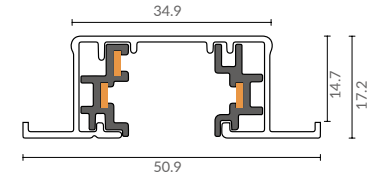
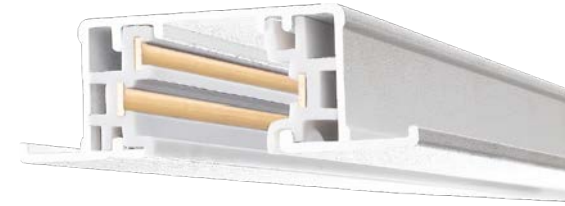


Single Circuit Track System 3 Wires



Model No.	Track length	Shell Material	Colour	Package
Pro-0310A	1M track with double end cap.(100cm)	Aluminium Extrusion	White <input type="checkbox"/> Silver <input type="checkbox"/> Black <input type="checkbox"/>	1 / 12
Pro-0320A	2M track with double end cap.(200cm)	Aluminium Extrusion	White <input type="checkbox"/> Silver <input type="checkbox"/> Black <input type="checkbox"/>	1 / 12
Pro-0330A	3M track with double end cap.(300cm)	Aluminium Extrusion	White <input type="checkbox"/> Silver <input type="checkbox"/> Black <input type="checkbox"/>	1 / 9
Pro-03400A	4M track with double end cap.(400cm)	Aluminium Extrusion	White <input type="checkbox"/> Silver <input type="checkbox"/> Black <input type="checkbox"/>	1 / 9
Pro-0302A	2'track with double end cap actual length24"	Aluminium Extrusion	White <input type="checkbox"/> Silver <input type="checkbox"/> Black <input type="checkbox"/>	1 / 12
Pro-0304A	4'track with double end cap actual length48"	Aluminium Extrusion	White <input type="checkbox"/> Silver <input type="checkbox"/> Black <input type="checkbox"/>	1 / 12
Pro-0306A	6'track with double end cap actual length72"	Aluminium Extrusion	White <input type="checkbox"/> Silver <input type="checkbox"/> Black <input type="checkbox"/>	1 / 12
Pro-0308A	8'track with double end cap actual length96"	Aluminium Extrusion	White <input type="checkbox"/> Silver <input type="checkbox"/> Black <input type="checkbox"/>	1 / 12
Pro-0310B	1M track with live end & end cap.(100cm)	Aluminium Extrusion	White <input type="checkbox"/> Silver <input type="checkbox"/> Black <input type="checkbox"/>	1 / 12
Pro-0320B	2M track with live end & end cap.(200cm)	Aluminium Extrusion	White <input type="checkbox"/> Silver <input type="checkbox"/> Black <input type="checkbox"/>	1 / 12
Pro-0330B	3M track with live end & end cap.(300cm)	Aluminium Extrusion	White <input type="checkbox"/> Silver <input type="checkbox"/> Black <input type="checkbox"/>	1 / 9
Pro-03400B	4M track with live end & end cap.(400cm)	Aluminium Extrusion	White <input type="checkbox"/> Silver <input type="checkbox"/> Black <input type="checkbox"/>	1 / 9
Pro-0302B	2'track with live end and end cap actual length24"	Aluminium Extrusion	White <input type="checkbox"/> Silver <input type="checkbox"/> Black <input type="checkbox"/>	1 / 12
Pro-0304B	4'track with live end and end cap actual length48"	Aluminium Extrusion	White <input type="checkbox"/> Silver <input type="checkbox"/> Black <input type="checkbox"/>	1 / 12
Pro-0306B	6'track with live end and end cap actual length72"	Aluminium Extrusion	White <input type="checkbox"/> Silver <input type="checkbox"/> Black <input type="checkbox"/>	1 / 12
Pro-0308B	8'track with live end and end cap actual length96"	Aluminium Extrusion	White <input type="checkbox"/> Silver <input type="checkbox"/> Black <input type="checkbox"/>	1 / 12
Pro-0310C	1M track with live end & end cap.(100cm)	Aluminium Extrusion	White <input type="checkbox"/> Silver <input type="checkbox"/> Black <input type="checkbox"/>	1 / 12
Pro-0320C	2M track with live end & end cap.(200cm)	Aluminium Extrusion	White <input type="checkbox"/> Silver <input type="checkbox"/> Black <input type="checkbox"/>	1 / 12
Pro-0330C	3M track with live end & end cap.(300cm)	Aluminium Extrusion	White <input type="checkbox"/> Silver <input type="checkbox"/> Black <input type="checkbox"/>	1 / 9
Pro-03400C	4M track with live end & end cap.(400cm)	Aluminium Extrusion	White <input type="checkbox"/> Silver <input type="checkbox"/> Black <input type="checkbox"/>	1 / 9
Pro-0302C	2'track with live end and end cap actual length24"	Aluminium Extrusion	White <input type="checkbox"/> Silver <input type="checkbox"/> Black <input type="checkbox"/>	1 / 12
Pro-0304C	4'track with live end and end cap actual length48"	Aluminium Extrusion	White <input type="checkbox"/> Silver <input type="checkbox"/> Black <input type="checkbox"/>	1 / 12
Pro-0306C	6'track with live end and end cap actual length72"	Aluminium Extrusion	White <input type="checkbox"/> Silver <input type="checkbox"/> Black <input type="checkbox"/>	1 / 12
Pro-0308C	8'track with live end and end cap actual length96"	Aluminium Extrusion	White <input type="checkbox"/> Silver <input type="checkbox"/> Black <input type="checkbox"/>	1 / 12

Single Circuit Recessed 3 Wires

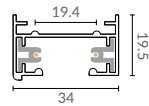


Model No.	Track length	Shell Material	Colour	Package
Pro-R310A	1M track with double end cap.(100cm)	Aluminium Extrusion	White <input type="checkbox"/> Silver <input type="checkbox"/> Black <input type="checkbox"/>	1 / 12
Pro-R320A	2M track with double end cap.(200cm)	Aluminium Extrusion	White <input type="checkbox"/> Silver <input type="checkbox"/> Black <input type="checkbox"/>	1 / 12
Pro-R330A	3M track with double end cap.(300cm)	Aluminium Extrusion	White <input type="checkbox"/> Silver <input type="checkbox"/> Black <input type="checkbox"/>	1 / 12
Pro-R3400A	4M track with double end cap.(400cm)	Aluminium Extrusion	White <input type="checkbox"/> Silver <input type="checkbox"/> Black <input type="checkbox"/>	1 / 9
Pro-R302A	2'track with double end cap actual length24"	Aluminium Extrusion	White <input type="checkbox"/> Silver <input type="checkbox"/> Black <input type="checkbox"/>	1 / 12
Pro-R304A	4'track with double end cap actual length48"	Aluminium Extrusion	White <input type="checkbox"/> Silver <input type="checkbox"/> Black <input type="checkbox"/>	1 / 12
Pro-R306A	6'track with double end cap actual length72"	Aluminium Extrusion	White <input type="checkbox"/> Silver <input type="checkbox"/> Black <input type="checkbox"/>	1 / 12
Pro-R308A	8'track with double end cap actual length96"	Aluminium Extrusion	White <input type="checkbox"/> Silver <input type="checkbox"/> Black <input type="checkbox"/>	1 / 12
Pro-R310B	1M track with live end & end cap.(100cm)	Aluminium Extrusion	White <input type="checkbox"/> Silver <input type="checkbox"/> Black <input type="checkbox"/>	1 / 12
Pro-R320B	2M track with live end & end cap.(200cm)	Aluminium Extrusion	White <input type="checkbox"/> Silver <input type="checkbox"/> Black <input type="checkbox"/>	1 / 12
Pro-R330B	3M track with live end & end cap.(300cm)	Aluminium Extrusion	White <input type="checkbox"/> Silver <input type="checkbox"/> Black <input type="checkbox"/>	1 / 12
Pro-R3400B	4M track with live end & end cap.(400cm)	Aluminium Extrusion	White <input type="checkbox"/> Silver <input type="checkbox"/> Black <input type="checkbox"/>	1 / 9
Pro-R302B	2'track with live end and end cap actual length24"	Aluminium Extrusion	White <input type="checkbox"/> Silver <input type="checkbox"/> Black <input type="checkbox"/>	1 / 12
Pro-R304B	4'track with live end and end cap actual length48"	Aluminium Extrusion	White <input type="checkbox"/> Silver <input type="checkbox"/> Black <input type="checkbox"/>	1 / 12
Pro-R306B	6'track with live end and end cap actual length72"	Aluminium Extrusion	White <input type="checkbox"/> Silver <input type="checkbox"/> Black <input type="checkbox"/>	1 / 12
Pro-R308B	8'track with live end and end cap actual length96"	Aluminium Extrusion	White <input type="checkbox"/> Silver <input type="checkbox"/> Black <input type="checkbox"/>	1 / 12



Single Circuit Track System

2 Wires



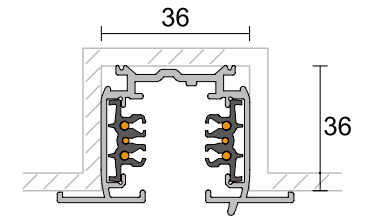
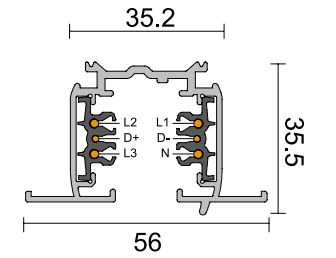
Model No.	Track length	Shell Material	Colour
Pro-L210-W	1M / 1.5M / 2M / 3M track actual one meter. (100cm / 150cm / 200cm / 300cm)	Aluminium Extrusion	White <input type="checkbox"/> Silver <input type="checkbox"/> Black <input type="checkbox"/>



Model No.	Track length	Shell Material	Colour
Pro-RL210-W	1M / 1.5M / 2M / 3M track actual one meter. (100cm / 150cm / 200cm / 300cm)	Aluminium Extrusion	White <input type="checkbox"/> Silver <input type="checkbox"/> Black <input type="checkbox"/>

3 Circuit Recessed

6Wires



LED Track light

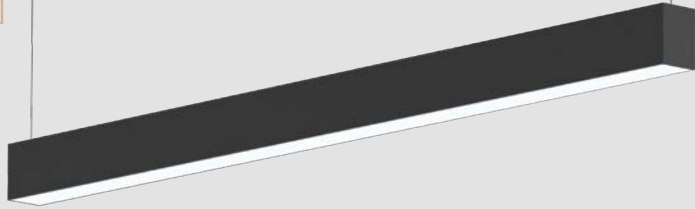
Model No.	Track length	Shell Material	Colour	Package
Pro-R610	1000(mm)	Aluminium Extrusion	White <input type="checkbox"/> Silver <input type="checkbox"/> Black <input type="checkbox"/>	1 / 9
Pro-R620	2000(mm)	Aluminium Extrusion	White <input type="checkbox"/> Silver <input type="checkbox"/> Black <input type="checkbox"/>	1 / 9
Pro-R630	3000(mm)	Aluminium Extrusion	White <input type="checkbox"/> Silver <input type="checkbox"/> Black <input type="checkbox"/>	1 / 6
Pro-R6400	4000(mm)	Aluminium Extrusion	White <input type="checkbox"/> Silver <input type="checkbox"/> Black <input type="checkbox"/>	1 / 4



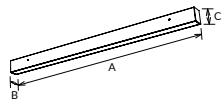
LED Linear & Batten Light

/Series/

LED batten series and linear light are more and more popular nowadays. The original design concept is to replace the LED tube. But LED batten is more decorative and elegant, while it also maintains high lumen efficiency. UPSHINE is committed to the design and development of LED battens for many years. Multiple functions are updated constantly: UGR<19, 100lm/W, 120lm/W, lighting up&down, as well as DALI or 0-10v dimmable system. Surface mounted, suspended and wall mounted are all available.



DB77A Linear light



DB77A is a seamless splicing design with straight/ corner/cross splicing connector. Two lamp cover options: Standard cover and anti-glare cover. Adopt high lumen SMD light source, flicker free and high efficiency driver make a better lumen. Functions: Down lighting, up&down lighting, adjustable CCT, emergency and sensor. Multiple installation: pendant/surface mounted/wall mounted/ recessed/track, Modular design: replaceable driver and emergency module.

Materials of Housing : Aluminium
Materials of Optics : PC

- ▶
- ▶
- ▶
- ▶

Code	Watt	Size(AxBxCmm)	Lumen(±5%)	N.W/pc(kgs)	Q'ty/CTN
DB77A-600-17W	17W	602x57x76	1680lm	1.70	6PCS
DB77A-600-22W	17W+5W	602x57x76	2250lm	1.70	6PCS
DB77A-1200-36W	36W	1212x57x76	3850lm	2.70	6PCS
DB77A-1200-45W	36W+9W	1212x57x76	4850lm	2.70	6PCS
DB77A-1500-45W	45W	1512x57x76	4850lm	3.50	6PCS
DB77A-1500-56W	45W+11W	1512x57x76	6000lm	3.50	6PCS

CCT ——— 3000K ——— 4000K ——— 5700K

Finish ——— White ——— Black

Installation accessories ——— Suspension kit

Recessed ACC-DB66-0300 Suspended with ceiling plate ACC-0200 Track ACC-DB77A-0500

DB77A | DIFFUSER TYPE

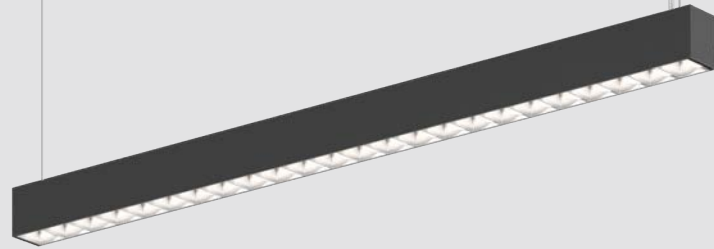
Upper Glowing Accessories



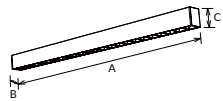
Connection accessories



LED Linear & Batten light



DB77B Linear light



DB77B is a UGR<19 SMD linear light with reflector design. The splicing with L/T/X node connector, making a very convenient connection. It can be down lighting (CCT changeable is optional) or up&down lighting. Functions: 1-10V/DALI dimming, emergency. Multiple installation: surface mounted/Recessed/Suspending.

- ▶ 65° IP20
- ▶ DIM DALI 1-10V Flicker Free SMD SWITCH
- ▶ AC 220-240V PF≥0.9 CRI≥80
- ▶ SAA RoHS CE

Materials of Housing : Aluminium
Materials of Optics : PC

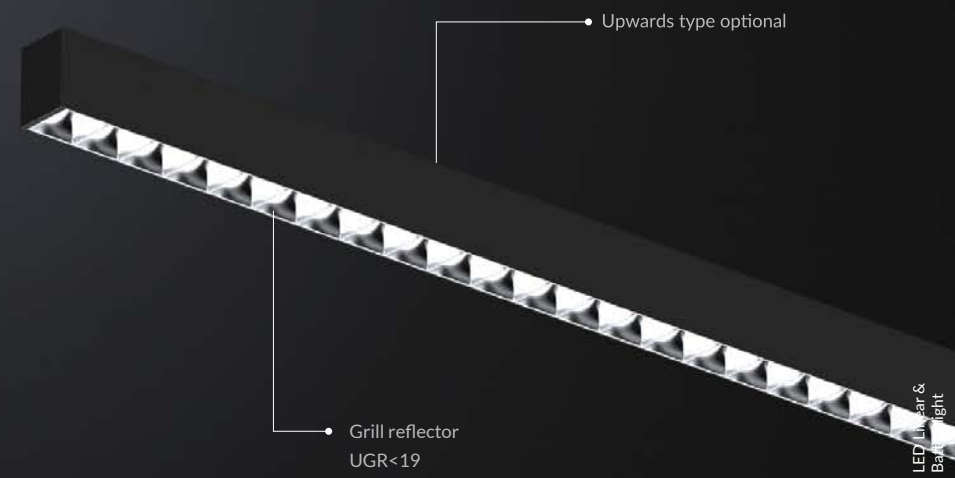
Code	Watt	Size(AxBxCmm)	Lumen(±5%)	N.W/pc(kgs)	Q'ty/CTN
DB77B-1200-36W	36W	Ø1212x57x76	3650lm	2.30	6PCS
DB77B-1200-48W	48W	Ø1212x57x76	4850lm	2.30	6PCS
DB77B-1500-45W	45W	Ø1512x57x76	4550lm	2.80	6PCS
DB77B-1500-60W	60W	Ø1512x57x76	6100lm	2.80	6PCS
DB77B-1800-54W	54W	Ø1812x57x76	5500lm	3.40	6PCS
DB77B-1800-65W	65W	Ø1812x57x76	6600lm	3.40	6PCS
DB77B-2400-72W	72W	Ø2412x57x76	7300lm	4.50	2PCS
DB77B-2400-96W	96W	Ø2412x57x76	9700lm	4.50	2PCS

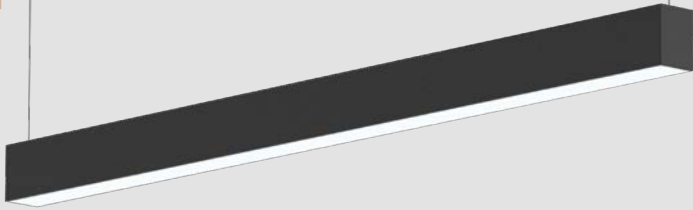
CCT ——— 3000K ——— 4000K ——— 5700K Finish ——— White Black

Installation accessories ——— Suspension kit Recessed ACC-DB66-0300 Suspended with ceiling plate ACC-DB66-0200 Track ACC-DB77A-0500

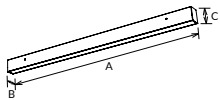


DB77B | GRILL REFLECTOR
UGR<19





DB66 Linear light



DB66A/B is a new linkable design light. Adopt high lumen efficiency SMD LED. Pendant/surface mounted/wall mounted installation available. Up and down light effect for wall mounted and pendant installation. Interchangeable CCT, DALI/0-10V dimming for options. Tridonic DALI driver available.

Materials of Housing : Aluminium
Materials of Optics : PC

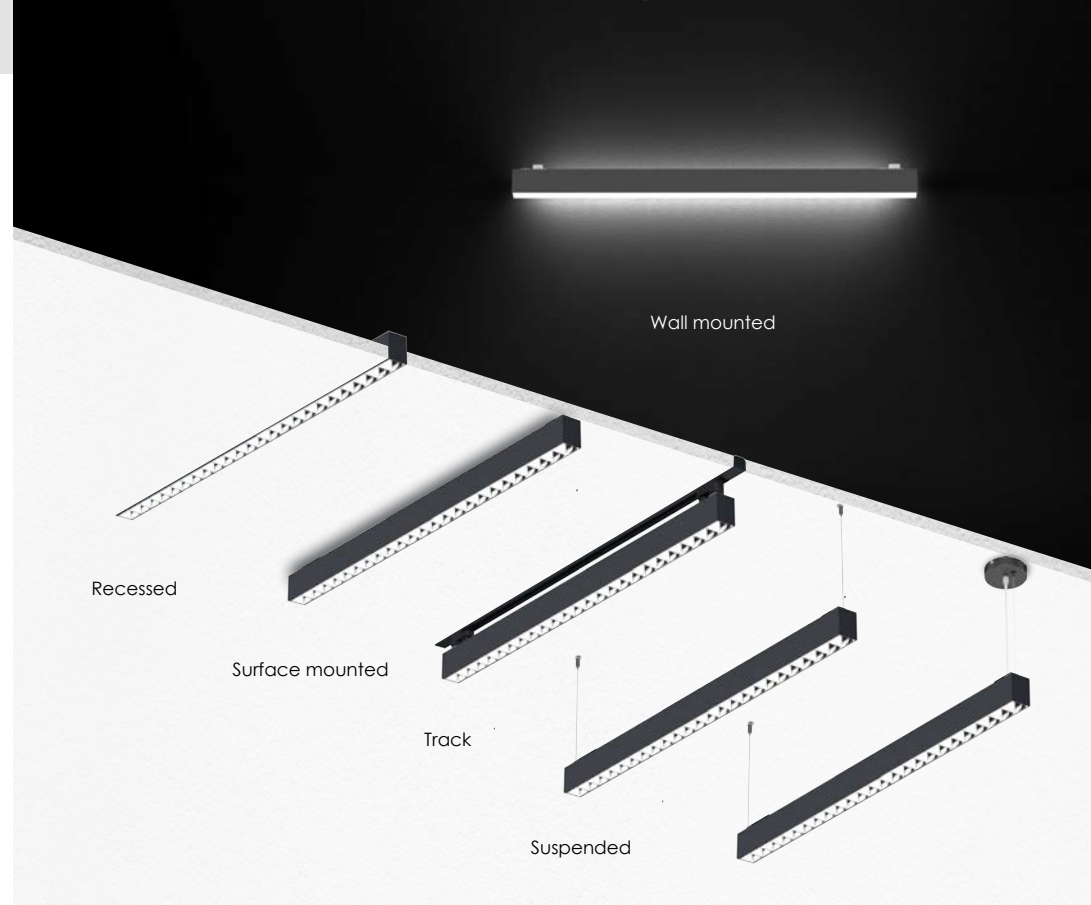
- ▶
- ▶
- ▶
- ▶
- ▶

Code	Watt	Size(AxBxCmm)	Lumen(±5%)	N.W/pc(kgs)	Q'ty/CTN
DB66A-1200-36W	36W	1204x56x75	3950lm/4800lm	2.75	6PCS
DB66A-1200-50W	50W	1204x56x75	6200lm/6400lm	2.75	6PCS
DB66A-1500-42W	42W	1504x56x75	4750lm/5400lm	3.35	6PCS
DB66A-1500-60W	60W	1504x56x75	6450lm/7500lm	3.35	6PCS
DB66B-1200-36W	36W	1204x56x75	3950lm/4300lm	2.75	6PCS
DB66B-1200-50W	50W	1204x56x75	5300lm/6400lm	2.75	6PCS
DB66B-1500-42W	42W	1504x56x75	4600lm/4800lm	3.35	6PCS
DB66B-1500-60W	60W	1504x56x75	6600lm/7600lm	3.35	6PCS

CCT — 3000K — 4000K — 5700K — Finish — White — Black

Installation accessories — Suspension kit — Recessed ACC-DB66-0300 — Suspended with ceiling plate ACC-DB66-0200 — Track ACC-DB66-0500

— Straight link connector — ACC-DB66X-04 — ACC-DB66X-02 — ACC-DB66X-03



Multi-installation

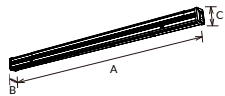
LED Linear & Batten light



DB128A

DB128B

DB128 Trunking System



DB128 LED Linear Track Light adopts high lumen SMD and internal driver. its separated module design can support a flexible installation. For track, 5-wire/8-wire/12-wire selectable, splicing with L/T/X node connector and different entry hole. Power selectable by dip switch. DALI dimming, Emergency, Sensor for more application demands. Multifit for Surface mounting, steel wire suspension, rod suspension and chain suspension.

Materials of Housing : Steel
Materials of Optics : PMMA

- ▶ 30° 60° 90° 120°
- ▶ 30° 30° IP20
- ▶ DIM DALI Floor Free Person Signal
- ▶ AC 200-240V PF=0.9 CRI=80
- ▶ SAA RoHS CE

Code	Watt	Size(AxBxCmm)	Lumen(±5%)	N.W/ pc(kgs)	Q'ty/ CTN
DB128A-1500-40W-A4	28W/33W/36W/40W	1498x71.4x71.5	6150lm/7050lm/7500lm/8400lm	2.00	4PCS
DB128A-1500-60W-A4	45W/50W/55W/60W	1498x71.4x71.5	9550lm/10550lm/11550lm/12550lm	2.00	4PCS
DB128A-1500-74W-A3	62W/68W/74W	1498x71.4x71.5	12200lm/13600lm/14650lm	2.00	4PCS
DB128B-1500-40W-A4	28W/33W/36W/40W	1498x71.4x86.5	4400lm/5150lm/5500lm/6000lm	1.50	4PCS
DB128B-1500-60W-A4	45W/50W/55W/60W	1498x71.4x86.5	7050lm/7700lm/8300lm/8900lm	1.50	4PCS
DB128B-1500-74W-A3	62W/68W/74W	1498x71.4x86.5	9350lm/10200lm/10500lm	1.50	4PCS

CCT — 3000K — 4000K — 5700K

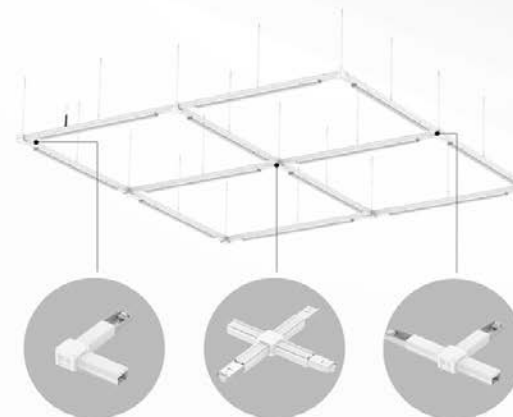
Finish — White

Installation accessories — Surface mounted kit



LED LINEAR LIGHTING SYSTEM

Separated module design with track, linear light and functional modules



Suspension kit



LED Linear & Batten light

CONTENTS

338 Series P002-009



228 Series P010-017



322 Series P018-025



126 Series P026-029



417 Series P030-033



LED DOWNLIGHT Commercial Series P036-113





DL326 / P080



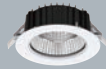
CL94 / P081



DL361 / P082



DL284A/B / P086



DL284C / P087



DL284A/B / P088



DL284C / P089



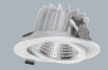
TH0001 / P090



DL113 / P094



DL122 / P095



CL156 / P096



DL297A / P098



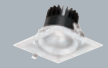
DL77 / P100



DL335 / P101



CL108 / P102



CL113A / P104



CL113B / P105



RD01 / P106



RD01-C / P107



RD07A&B / P108



CL146 / P109



CL99 / P110



RD02&RD03 / P112



RD04&RD05 / P113

LED DOWNLIGHT Surface mounted&Pendant Series P114-124



DL266B/C / P114



DL38B / P116



DL328 / P118



DL176 / P119



DL269 / P120



DL115A/B / P122



PD05A/B / P123



DL207 / P124

LED CEILING LIGHT P128-144



AL37 / P128



AL38 / P129



AL131 / P130



AL188 / P132



AL189 / P133



AL165 / P134



AL137 / P136



AL137B / P137



AL166 / P138



AL99C/D / P140



AL194 / P142



AL174/B / P144

LED BULKHEAD P146-161



AL96 / P146



AL66 / P147



AL65 / P148



AL65B / P149



AL65C / P150



AL65D / P151



AL162/B / P152



AL163/B / P153



AL91 / P154



AL91E / P155



AL91F / P156



AL104 / P158



AL104R / P160



AL104S / P161

LED TRACK LIGHT P166-208



TL29A / P166



TL29B / P167



TL29C / P168



TL29D / P169



TL29E / P170



TL29F / P171



TL90 / P172



TL69A / P174



TL69B / P175



TL57A / P176



TL58A / P177 TL02 / P178 TL127 / P179 TL25 / P180 TL25B / P181



TL129 / P182 TL120 / P184 TL135 / P186 TL56 / P188 TL17 / P189



NEW TL149 / P190 TL79 / P192 TL40B / P193 TL121 / P194 TL49 / P196



TL110 / P197 **NEW** TL151A / P198 **NEW** TL151B / P199 **NEW** TL161A / P200 **NEW** TL161B / P201



TL50 / P202 TL109 / P203 TL111 / P204 TL112 / P205 TL113 / P206

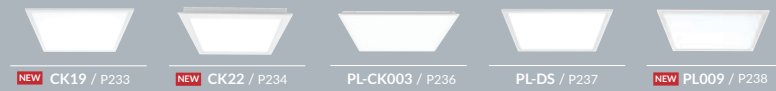


TL114 / P207 TL115 / P208

LED PANEL LIGHT P226-266



PL-CK5 / P226 PL-CK002 / P228 PL-CKB / P230 PL-CK2 / P231 CK15 / P232



NEW CK19 / P233 **NEW** CK22 / P234 PL-CK003 / P236 PL-DS / P237 **NEW** PL009 / P238



PL001 / P239 PL-G5B / P240 PL-G6B / P241 PL-AF2 / P242 PL-CC / P244



PL-CD / P245 PL006 / P246 PL-DP / P248 GL-P / P250 **NEW** PL18 / P251



PL-AK / P252 PL008 / P253 PL-DE / P254 GL-AA / P256 GL002 / P257



PL-DF / P258 PL-DB / P259 DB15B / P260 PL-DR / P261 PL-DG / P262



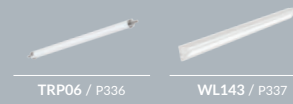
PL-W / P264 PL-DD / P265 PL-EA / P266

LED FREESTANDING LUMINAIRE P270-274



OL02 / P270 OL06 / P272 OL07 / P273 OL01 / P274

LED LINEAR & BATTEN LIGHT P278-337



LED TUBE LIGHT P340-343



338 Series

UGR<19



Track light
TL338



Suspension
PD338B



Suspension
PD338A



Recessed
DL338



Surface mounted
DL338A



Track spot surface
DL338B

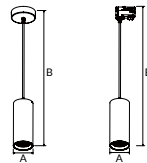
PD338A



PD338B



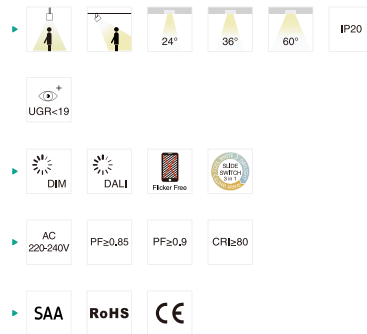
PD338A/B Downlight



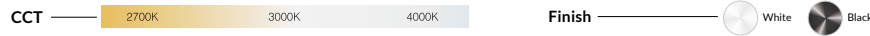
PD338A/B is a DIY modular series with an exquisite appearance and anti-glare UGR19 design, 6 kinds of installation ways, 3 reflectors and 3 front ring colors can be exchangeable. It adopts brand Bridgelux COB led chip with 120lm/W light efficiency. Four size options : Ø55mm, Ø65mm, Ø85mm, Ø100mm. It can do triac dim, DALI dim, CCT interchangeable and wattage adjustable.

Materials of Housing : Aluminium

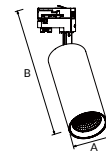
Materials of Optics : Aluminium+transparent tempered glass



Code	Watt	Size(AxBmm)	Lumen(±5%)	N.W/pc(kgs)	Q'ty/CTN
PD338A/B-55-6W	6W	Ø55x1189/Ø55x1213	750lm	0.50/0.48	12PCS
PD338A/B-55-10W	10W	Ø55x1189/Ø55x1213	1200lm	0.50/0.48	12PCS
PD338A/B-65-10W	10W	Ø65x1209/Ø65x1233	1200lm	0.61/0.59	12PCS
PD338A/B-65-15W	15W	Ø65x1209/Ø65x1233	1750lm	0.61/0.59	12PCS
PD338A/B-85-20W	20W	Ø85x1235/Ø85x1259	2550lm	0.98/0.87	12PCS
PD338A/B-85-25W	25W	Ø85x1235/Ø85x1259	3150lm	0.98/0.87	12PCS
PD338A/B-100-30W	30W	Ø100x1249/Ø100x1273	3650lm	1.16/1.14	12PCS
PD338A/B-100-35W	35W	Ø100x1249/Ø100x1273	4100lm	1.16/1.14	12PCS



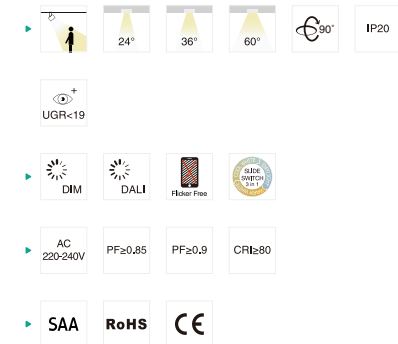
TL338 Track light



TL338 is a DIY modular series with an exquisite appearance and anti-glare UGR19 design, 6 kinds of installation ways, 3 reflectors and 3 front ring colors can be exchangeable. It adopts brand Bridgelux COB led chip with 120lm/W light efficiency. Four size options : Ø55mm, Ø65mm, Ø85mm, Ø100mm. It can do triac dim, DALI dim, CCT interchangeable and wattage adjustable.

Materials of Housing : Aluminium

Materials of Optics : Aluminium+transparent tempered glass



Code	Watt	Size(AxBmm)	Lumen(±5%)	N.W/pc(kgs)	Q'ty/CTN
TL338-55-6W	6W	Ø55x233	750lm	0.48	12PCS
TL338-55-10W	10W	Ø55x233	1200lm	0.48	12PCS
TL338-65-10W	10W	Ø65x253	1200lm	0.58	12PCS
TL338-65-15W	15W	Ø65x253	1750lm	0.58	12PCS
TL338-85-20W	20W	Ø85x292	2550lm	0.87	12PCS
TL338-85-25W	25W	Ø85x292	3150lm	0.87	12PCS
TL338-100-30W	30W	Ø100x306	3650lm	1.13	12PCS
TL338-100-35W	35W	Ø100x306	4100lm	1.13	12PCS



228 Series



Surface mounted
DL228A



Track spot surface
DL228B



TL228
with ceiling box



Suspension
PD228



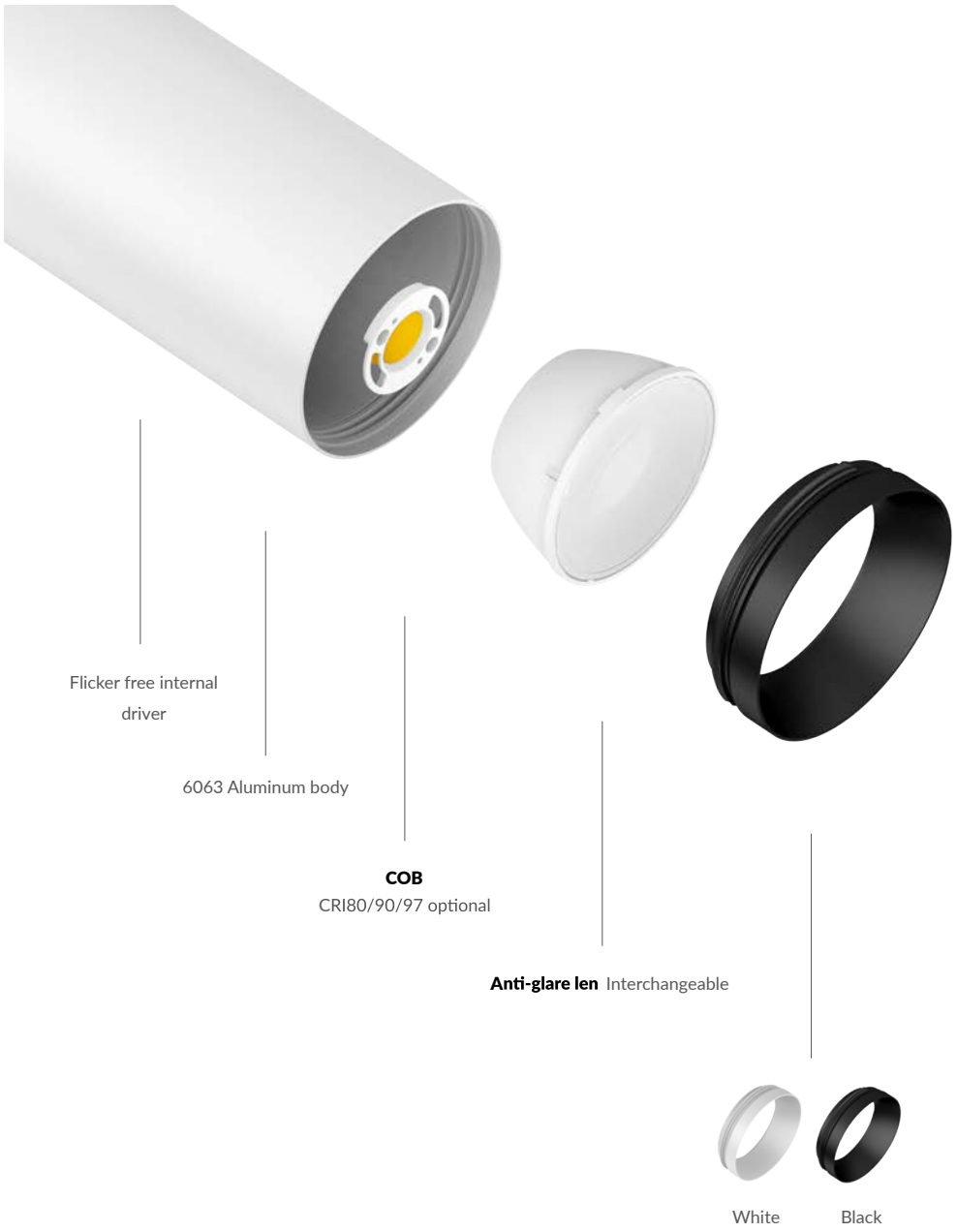
Track light
TL228

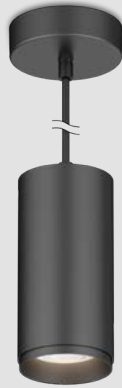


Suspension
PD228B

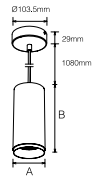


Suspension
PD228B





PD228 Downlight



PD228 pendant spot light is a high-performance LED luminaire that is ideal for commercial or residential applications. It adopts high lumen COB chip and lens design offer uniform light effect and enhanced glare control.

Materials of Housing : Aluminium
Materials of Optics : PMMA

- ▶ IP20
- ▶
- ▶
- ▶

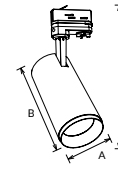
Code	Watt	Size(AxBmm)	Lumen(±5%)	N.W/pc(kgs)	Q'ty/CTN
PD228-10W	10W	Ø65x157	1100lm	0.55	12PCS
PD228-15W	15W	Ø65x157 (Non-dim) Ø85x178 (Triac-dim)	1650lm	0.55	12PCS
PD228-20W	20W	Ø85x178	2250lm	0.80	12PCS
PD228-25W	25W	Ø85x178	2700lm	0.80	12PCS
PD228-30W	30W	Ø100x211	3050lm	1.15	12PCS
PD228-40W	40W	Ø100x211	4200lm	1.15	12PCS

CCT ——— 2700K ——— 3000K ——— 4000K

Finish ——— White ——— Black

Interchangeable lens options ——— 24°/30°/45° for 10W/15W ——— 24°/36°/60° for 15W/20W/25W/30W/40W

TL228 Track light



TL228 anti-glare track light is with high lumen COB chip and lens design offer an uniform lighting output, flicker free internal driver. Modular lens design for different beam angle and convenient maintenance.

Materials of Housing : Aluminium
Materials of Optics : PMMA

- ▶ IP20
- ▶
- ▶
- ▶

Code	Watt	Size(AxBxCmm)	Lumen(±5%)	N.W/pc(kgs)	Q'ty/CTN
TL228-10W	10W	Ø65x157x249	1100lm	0.50	12PCS
TL228-15W	15W	Ø65x157x249(Non-dim) Ø85x178x269 (Triac-dim)	1650lm	0.50	12PCS
TL228-20W	20W	Ø85x178x269	2250lm	0.76	12PCS
TL228-25W	25W	Ø85x178x269	2700lm	0.76	12PCS
TL228-30W	30W	Ø100x211x302	3050lm	1.10	12PCS
TL228-40W	40W	Ø100x211x302	4200lm	1.10	12PCS

CCT ——— 2700K ——— 3000K ——— 4000K

Finish ——— White ——— Black ——— Silver

Interchangeable lens options ——— 24°/30°/45° for 10W/15W ——— 24°/36°/60° for 15W/20W/25W/30W/40W

322 series



Surface mounted
DL322A



Recessed
DL322B



Suspension
PD322



Track light
TL322A



DALI track light
TL322B



Suspension with track
PD322A



DALI suspension with track
PD322B



Oblique axis rotatory

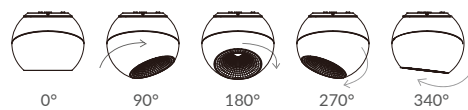
Modern spherical design



ADC12 body

COB LED
CRI80/90/97 optional

UGR22
36°/60° optional



0°

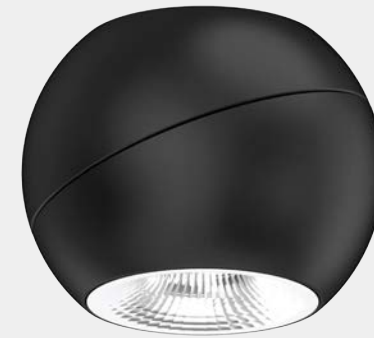
90°

180°

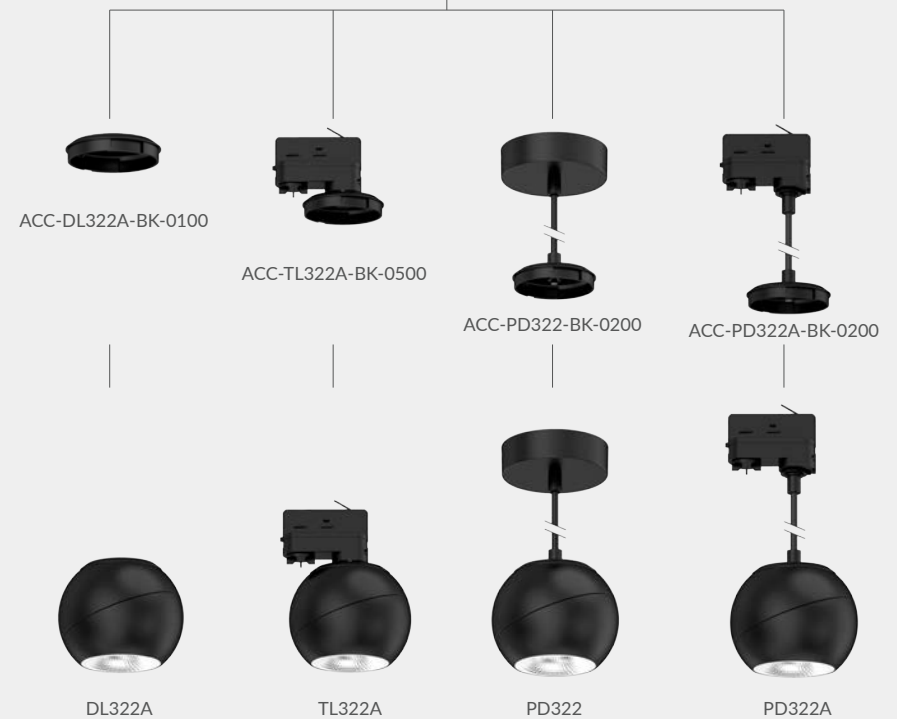
270°

340°

DIY modular design

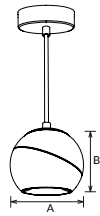


Lamp body





PD322 Downlight



PD322 adopts high lumen COB chip. It is suspension version. PD322A is track suspending, PD322B is DALI track suspending for option.
ADC12 aluminum lamp body provides excellent heat dissipation. 340degree rotatory and lighting direction is 40 degree adjustable

Materials of Housing : Die-casting Aluminium
Materials of Optics : PC

- ▶ 36° 60° IP20
- ▶ DALI Flicker Free
- ▶ AC 220-240V PF≥0.9 CRI≥80
- ▶ RoHS CE

Code	Watt	Size(AxBmm)	Lumen(±5%)	N.W/pc(kgs)	Q'ty/CTN
PD322/ PD322A-10W	10W	Ø120x96	1200lm	0.97	12PCS
PD322/ PD322A-14W	14W	Ø120x96	1600lm	0.97	12PCS
PD322B-13W	13W	Ø120x96	1400lm	1.01	12PCS
PD322B-17W	17W	Ø120x96	1800lm	1.01	12PCS
PD322B-21W	21W	Ø120x96	2100lm	1.01	12PCS

TL322 Track light



TL322 led track light is an ingenious design adopts high efficiency led. ADC12 aluminum lamp body provides excellent heat dissipation. 340degree rotatory and lighting direction is 40 degree adjustable .

Materials of Housing : Die-casting Aluminium
Materials of Optics : PC

- ▶ 36° 60° IP20
- ▶ DALI Flicker Free
- ▶ AC 220-240V PF≥0.9 CRI≥80
- ▶ RoHS CE

Code	Watt	Size(AxBmm)	Lumen(±5%)	N.W/pc(kgs)	Q'ty/CTN
TL322A-10W	10W	Ø120x96	1200lm	0.90	12PCS
TL322A-14W	14W	Ø120x96	1600lm	0.90	12PCS
TL322B-13W	13W	Ø120x96	1400lm	0.92	12PCS
TL322B-17W	17W	Ø120x96	1800lm	0.92	12PCS
TL322B-21W	21W	Ø120x96	2100lm	0.92	12PCS

CCT — 2700K 3000K 4000K

Finish — White Black

CCT — 2700K 3000K 4000K

Finish — White Black



Pendant

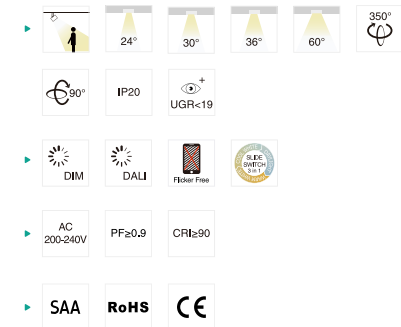
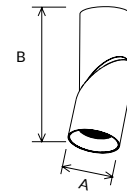
Surface

Track

126 Series CCT Changeable



DL126 Downlight



DL126 is a modular series with super slim and rotate head design. UGR<19, CRI>90 provide high quality light output experience, 3CCT available, 3 kinds of installation for option: track, surface mounted and pendant.

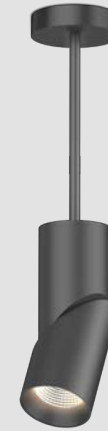
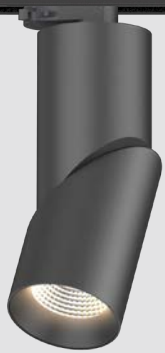
Materials of Housing : Die-casting Aluminium

Materials of Optics : PC

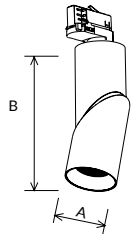
Code	Watt	Size(AxBmm)	Lumen(±5%)	N.W/pc(kgs)	Q'ty/CTN
DL126-65-10W	10W	Ø65x248	980lm	0.78	12PCS
DL126-65-15W	15W	Ø65x248	1400lm	0.78	12PCS
DL126-85-20W	20W	Ø85x278	2100lm	1.15	6PCS
DL126-85-25W	25W	Ø85x278	2500lm	1.15	6PCS
DL126-85-28W	28W	Ø85x278	2850lm	1.15	6PCS
DL126-85-30W	30W	Ø85x278	2900lm	1.15	6PCS

CCT ——— 2700K ——— 3000K ——— 4000K ——— Finish ——— White ——— Black

Installation accessories ——— ACC-DL126 ——— Honeycomb cover



TL126 Track light



TL126 is a modular series with super slim and rotate head design. UGR<19, CRI90 provide high quality light output experience. 3CCT available, 3 kinds of installation for option: track, surface mounted and pendant.

Materials of Housing : Die-casting Aluminium
Materials of Optics : PC

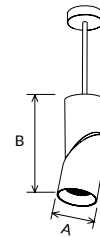
- ▶ 24° 30° 36° 60° 350°
- ▶ 90° IP20 UGR<19
- ▶ DIM DALI Floor-Free 3 CCT
- ▶ AC 200-240V PF≥0.9 CRI≥90
- ▶ SAA RoHS CE

Code	Watt	Size(AxBmm)	Lumen(±5%)	N.W/pc(kgs)	Q'ty/CTN
TL126-65-10W	10W	Ø65x248	980lm	0.75	12PCS
TL126-65-15W	15W	Ø65x248	1400lm	0.75	12PCS
TL126-85-20W	20W	Ø85x278	2100lm	1.25	6PCS
TL126-85-25W	25W	Ø85x278	2500lm	1.25	6PCS
TL126-85-28W	28W	Ø85x278	2850lm	1.25	6PCS
TL126-85-30W	30W	Ø85x278	2900lm	1.25	6PCS

CCT — 2700K 3000K 4000K Finish — White Black

Installation accessories — ACC-TL126 ACC-TL126(DALI)

PD126 Pendant light



PD126 is a modular series with super slim and rotate head design. UGR<19, CRI90 provide high quality light output experience. 3CCT available, 3 kinds of installation for option: track, surface mounted and pendant.

Materials of Housing : Die-casting Aluminium
Materials of Optics : PC

- ▶ 24° 30° 36° 60° 350°
- ▶ 90° IP20 UGR<19
- ▶ DIM DALI Floor-Free 3 CCT
- ▶ AC 200-240V PF≥0.9 CRI≥90
- ▶ SAA RoHS CE

Code	Watt	Size(AxBmm)	Lumen(±5%)	N.W/pc(kgs)	Q'ty/CTN
PD126-65-10W	10W	Ø65x248	980lm	0.91	12PCS
PD126-65-15W	15W	Ø65x248	1400lm	0.94	12PCS
PD126-85-20W	20W	Ø85x278	2100lm	1.45	6PCS
PD126-85-25W	25W	Ø85x278	2500lm	1.45	6PCS
PD126-85-28W	28W	Ø85x278	2850lm	1.45	6PCS
PD126-85-30W	30W	Ø85x278	2900lm	1.45	6PCS

CCT — 2700K 3000K 4000K Finish — White Black

Installation accessories — ACC-PD126 Honeycomb cover



LED Track Light

/Series/

LED track light has been around for decades, yet it remains as fresh and contemporary a ceiling light fixture as ever. This is due primarily to its pure modern look, with clean, rigid tracks and streamlined directional heads. But function is also a factor when it comes to a track lighting system, with each of the selected track heads independently and easily adjustable and brightly focused. Complete track lighting kits will also allow you to have a stylish ceiling track lighting systems instantly. UPSHINE various track light could be your excellent choice!



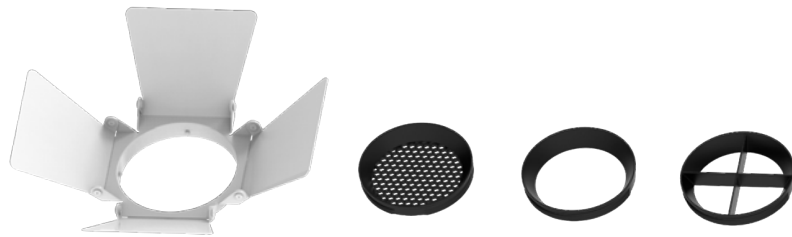
TL29A/C

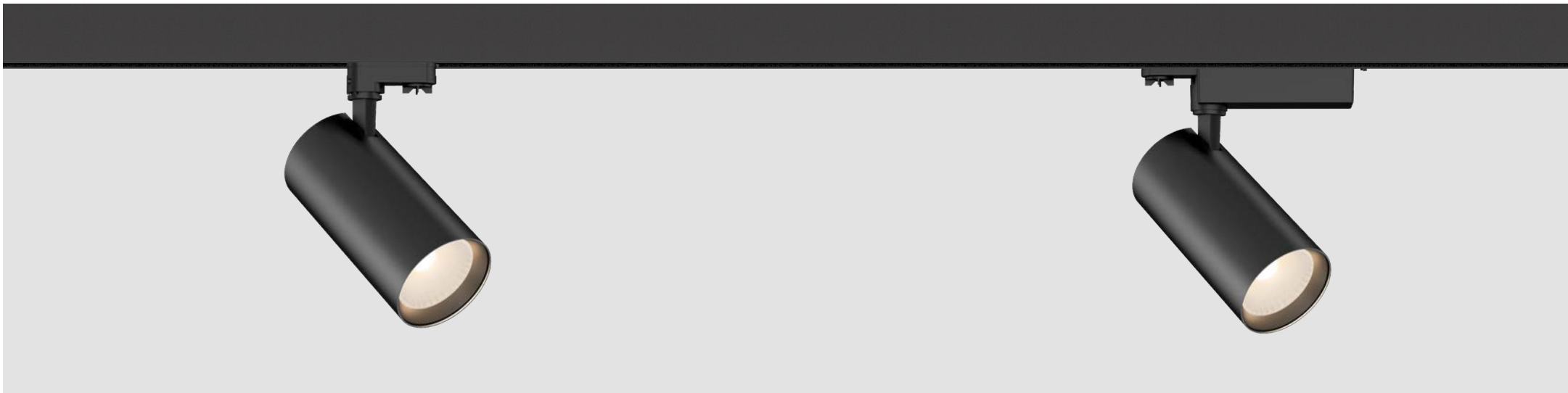
TL29B/D

TL29E

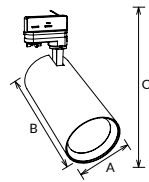
TL29F

TL29 Track Light /Series/





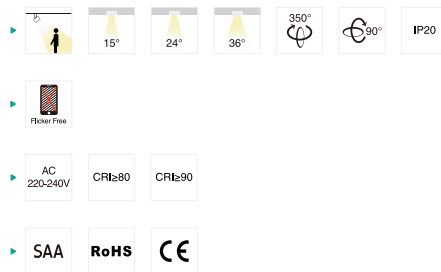
TL29A Track light



TL29A driverless track light adopts high quality brand DOB led light source. Standard/honeycomb/shutter trims for optional.

Materials of Housing : Aluminium

Materials of Optics : PC

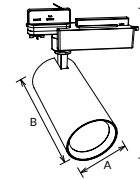


Code	Watt	Size(AxBxCmm)	Lumen(±5%)	N.W/pc(kgs)	Q'ty/CTN
TL29A-20W	20W	Ø85x170x261	1560lm	0.55	12PCS
TL29A-30W	30W	Ø100x200x291	2550lm	0.79	12PCS
TL29A-40W	40W	Ø100x200x291	3400lm	0.79	12PCS

CCT — 2700K 3000K 4000K Finish — White Black Silver

Trim Accessories — Standard Barn Door ACC-TL29-50 Honeycomb Louver ACC-TL29-51 Cross Louver ACC-TL29-52

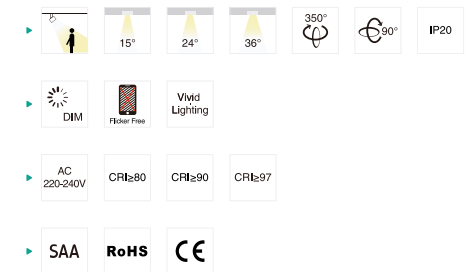
TL29B Track light



TL29B track light adopts brand Citizen COB with CRI80 CRI90 CRI97 for options.Brand Trodonic Driver available,also could be for Fresh Lighting with Citizen CRI95 Natrual Vivid COB.Standard/honeycomb/shutter trims for optional.

Materials of Housing : Aluminium

Materials of Optics : PC



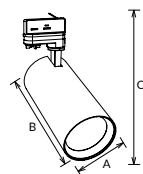
Code	Watt	Size(AxBxCmm)	Lumen(±5%)	N.W/pc(kgs)	Q'ty/CTN
TL29B-12W	12W	Ø65x150x188	1200lm	0.52	12PCS
TL29B-25W	25W	Ø85x170x206	2750lm	0.75	12PCS
TL29B-35W	35W	Ø85x200x206	3675lm	0.79	12PCS
TL29B-42W	42W	Ø100x200x220	4410lm	1.05	12PCS

CCT — 2700K 3000K 4000K Finish — White Black Silver

Trim Accessories — Standard Barn Door ACC-TL29-50 Honeycomb Louver ACC-TL29-51 Cross Louver ACC-TL29-52



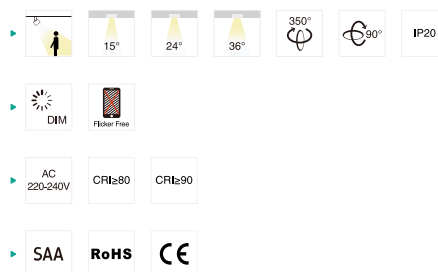
TL29C Track light



TL29C track light adopts brand Citizen COB led chip with internal driver. Standard/honeycomb/shutter trims for optional.

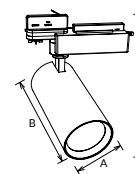
Materials of Housing : Aluminium

Materials of Optics : PC



Code	Watt	Size(AxBxCmm)	Lumen(±5%)	N.W/pc(kgs)	Q'ty/CTN
TL29C-12W	12W	Ø65x150x243	1200lm	0.47	12PCS
TL29C-25W	25W	Ø85x200x291	2750lm	0.68	12PCS
TL29C-35W	35W	Ø100x200x291	3675lm	0.79	12PCS

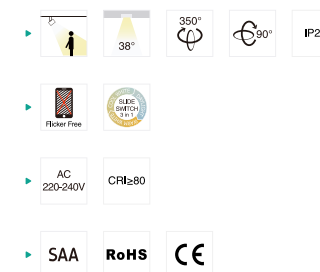
TL29D Track light



TL29D track light is minimalist design with external driver. It adopts high lumen SMD LED, anti-glare PC lens to achieve great lighting distribution. Tri-color with slide switch to reduce stock, standard/honeycomb/shutter trims for optional.

Materials of Housing : Aluminium

Materials of Optics : PC



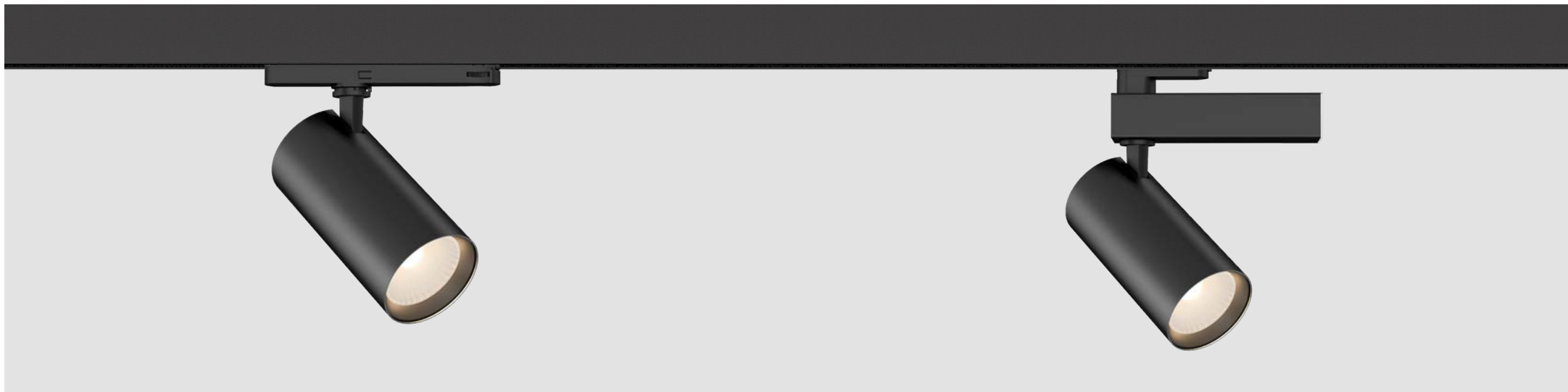
Code	Watt	Size(AxBxCmm)	Lumen(±5%)	N.W/pc(kgs)	Q'ty/CTN
TL29D-20W-C3	20W	Ø85x170x206	1800lm	0.75	12PCS
TL29D-30W-C3	30W	Ø85x200x206	2600lm	0.79	12PCS

CCT — 2700K — 3000K — 4000K — Finish — White — Black — Silver

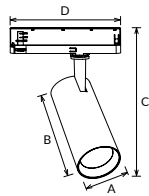
Trim Accessories — Standard — Barn Door ACC-TL29-50 — Honeycomb Louver ACC-TL29-51 — Cross Louver ACC-TL29-52

CCT — 3000K — 4000K — 5700K — Finish — White — Black — Silver

Trim Accessories — Standard — Barn Door ACC-TL29-50 — Honeycomb Louver ACC-TL29-51 — Cross Louver ACC-TL29-52



TL29E Track light



TL29E is with integrated designed of driver and adapter Adopt brand Citizen COB led light source, high quality, reliable performance. CRI80 CRI90 CRI97 for options. Standard/honeycomb/shutter trims available.

Materials of Housing : Aluminium
Materials of Optics : PC

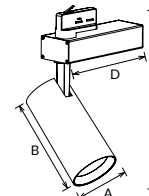
- ▶ IP20
- ▶ Flicker Free
- ▶
- ▶

Code	Watt	Size(AxBxCxDmm)	Lumen(±5%)	N.W/pc(kgs)	Q'ty/CTN
TL29E-25W	25W	Ø85x170x258x198	2750lm	0.65	12PCS
TL29E-35W	35W	Ø85x200x288x198	3675lm	0.68	12PCS

CCT ——— 2700K 3000K 4000K **Finish** ——— White Black Silver

Trim Accessories ——— Standard Barn Door ACC-TL29-50 Honeycomb Louver ACC-TL29-51 Cross Louver ACC-TL29-52

TL29F Track light



TL29F adopts brand Citizen COB led light source, and external Tridonic DALI driver to ensure high quality, reliable performance. CRI80 CRI90 CRI97 for options. Standard/honeycomb/shutter trims available.

Materials of Housing : Aluminium
Materials of Optics : PC

- ▶ IP20
- ▶ DALI Flicker Free
- ▶
- ▶

Code	Watt	Size(AxBxCxDmm)	Lumen(±5%)	N.W/pc(kgs)	Q'ty/CTN
TL29F-25W	25W	Ø85x170x298x198	2610lm	0.90	12PCS
TL29F-35W	35W	Ø85x200x328x198	3490lm	0.95	12PCS
TL29F-42W	42W	Ø100x200x328x198	4110lm	1.20	12PCS

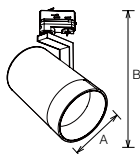
CCT ——— 2700K 3000K 4000K **Finish** ——— White Black Silver

Trim Accessories ——— Standard Barn Door ACC-TL29-50 Honeycomb Louver ACC-TL29-51 Cross Louver ACC-TL29-52

LED Track light



TL90 Track light



TL90 is a high-end track light with professional optical design. It adopts COB light source, special deep reflector design achieves anti-glare effect (Type A UGR<10, Type B UGR<17). Module design provides an easily replacement with different optic parts: reflector+tempered glass with circle lighting spot, reflector+special PC lens with oval lighting spot. Compact structure with big power 40W/50W which meets a high brightness demand. Horizontally 358 degree, vertically 180 degree rotary. DALI dim available.

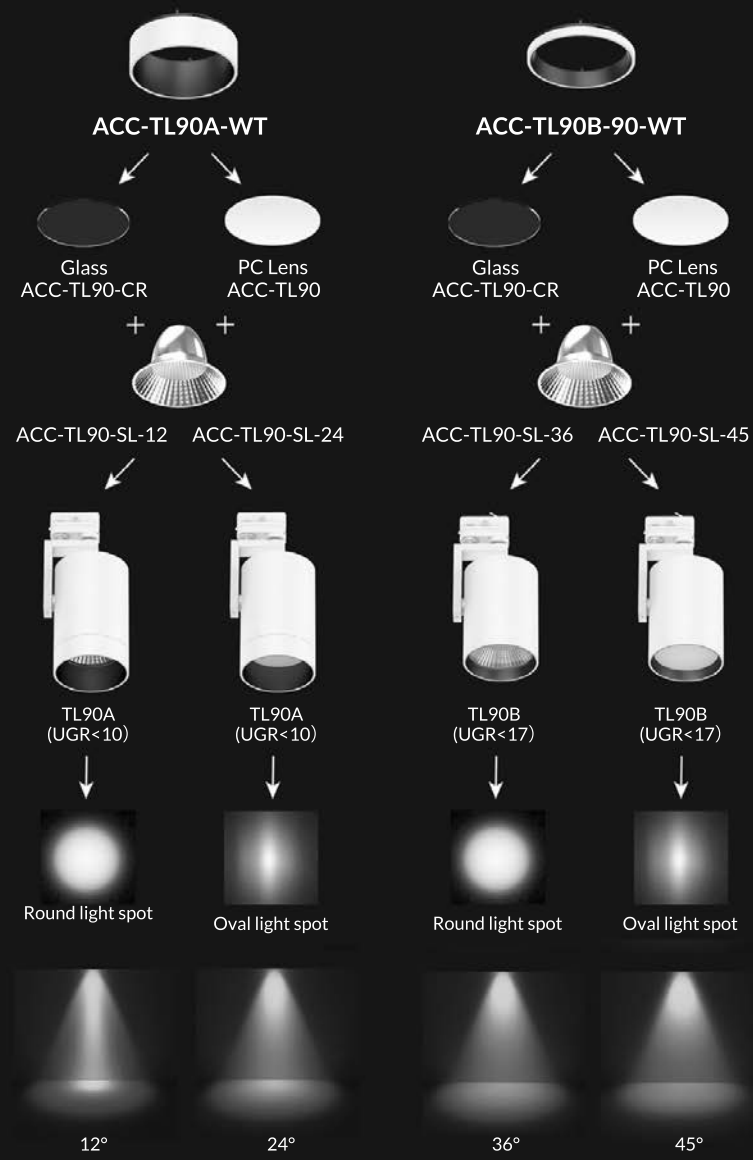
Materials of Housing : Die-casting Aluminium
Materials of Optics : Glass+Aluminium/ PC+Aluminium

- ▶ 12° 24° 36° 45° 358°
- ▶ 180° IP40 UGR<19
- ▶ DALI Flicker Free Adjustable Power
- ▶ AC 220-240V PF≥0.9 CRI≥80 CRI≥90 CRI≥97
- ▶ SAA RoHS CE

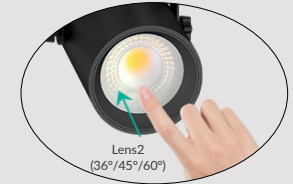
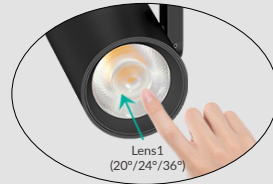
Code	Watt	Size(AxBmm)	Lumen(±5%)	N.W/pc(kgs)	Q'ty/CTN
TL90-70-15W	15W	Ø70x214	1250lm	0.54	6PCS
TL90A-90-30W-A3	20W/25W/30W	Ø90x295	20W:2100lm/25W:2400lm/30W:2750lm	1.20	6PCS
TL90A-110-40W-A3	30W/35W/40W	Ø110x294.8	30W:3200lm/35W:3600lm/40W:3800lm	1.25	6PCS
TL90A-125-50W-A3	40W/45W/50W	Ø125x315.4	40W:4000lm/45W:4400lm/50W:4700lm	1.56	6PCS
TL90A-110-30W-DA	30W	Ø110x294.8	2600lm	1.25	6PCS
TL90A-125-40W-DA	40W	Ø125x315.4	3500lm	1.56	6PCS
TL90B-90-30W-A3	20W/25W/30W	Ø90x280	20W:2300lm/25W:2850lm/30W:3100lm	1.20	6PCS
TL90B-110-40W-A3	30W/35W/40W	Ø110x269.8	30W:3300lm/35W:3700lm/40W:4000lm	1.25	6PCS
TL90B-125-50W-A3	40W/45W/50W	Ø125x287.4	40W:4000lm/45W:4600lm/50W:5000lm	1.56	6PCS
TL90B-110-30W-DA	30W	Ø110x269.8	2900lm	1.25	6PCS
TL90B-125-40W-DA	40W	Ø125x287.4	3800lm	1.56	6PCS

CCT ——— 2700K ——— 3000K ——— 4000K ——— Finish ——— White Black Silver

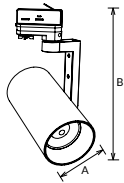
INTERCHANGEABLE REFLECTOR AND DIFFUSER



LED Track light



TL69A Track light



TL69 series track light with focus adjustable design, special lens can have a fast beam angle change (Just press the lens). Adopt high lumen Citizen light source, two bracket design options, changeable lighting orientation with 350° in horizontal direction and 300° in vertical direction.

Materials of Housing : PC/Aluminium

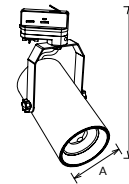
Materials of Optics : PMMA

- 20° 24° 36° 350° 300° IP20
- DIM Flicker Free
- AC 200-240V PF≥0.9 CRI≥80 CRI≥90 CRI≥97
- SAA RoHS CE

Code	Watt	Size(AxBmm)	Lumen(±5%)	N.W/pc(kgs)	Q'ty/CTN
TL69A-25W	25W	Ø96x298	2950lm	1.20	12PCS
TL69A-35W	35W	Ø96x298	3950lm	1.20	12PCS

CCT — 2700K 3000K 4000K Finish — White Black

TL69B Track light



TL69B track light is with special design with lens changeable 36°~60°by press . Adopt high lumen Citizen light source effected 115lm/w. Black and white finish color for option.

Materials of Housing : PC/Aluminium

Materials of Optics : PMMA

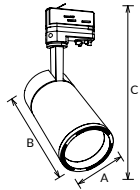
- 36° 45° 60° 350° 300° IP20
- DIM Flicker Free
- AC 200-240V PF≥0.9 CRI≥80 CRI≥90 CRI≥97
- SAA RoHS CE

Code	Watt	Size(AxBmm)	Lumen(±5%)	N.W/pc(kgs)	Q'ty/CTN
TL69B-25W	25W	Ø96x298	2950lm	1.20	12PCS
TL69B-35W	35W	Ø96x298	3950lm	1.20	12PCS

CCT — 2700K 3000K 4000K Finish — White Black

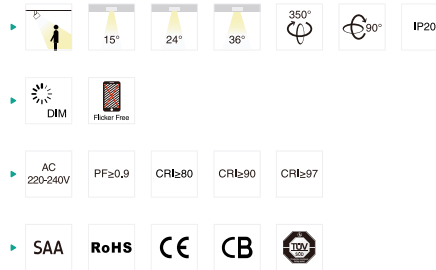


TL57A Track light



TL57A led track light with built-in driver, it adopts brand Citizen COB chip. Secondary optics with lens and reflector make more uniform light.

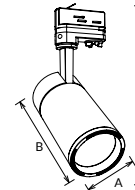
Materials of Housing : Aluminium
Materials of Optics : PC



Code	Watt	Size(AxBxCmm)	Lumen(±5%)	N.W/pc(kgs)	Q'ty/CTN
TL57A-10W-D	10W	Ø65x127x223	1050lm	0.51	12PCS
TL57A-25W-D	25W	Ø80x157x254	2500lm	0.81	12PCS
TL57A-35W-D	35W	Ø100x167x259	3450lm	1.03	12PCS
TL57A-15W	15W	Ø65x127x223	1600lm	0.51	12PCS
TL57A-25W	25W	Ø80x157x254	2700lm	0.81	12PCS
TL57A-35W	35W	Ø100x167x259	3800lm	1.03	12PCS

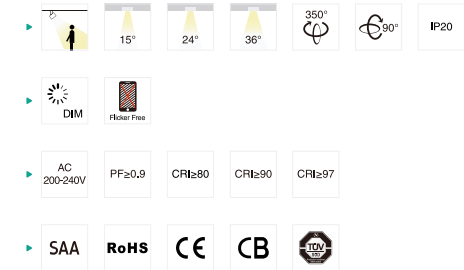
CCT — 2700K — 3000K — 4000K — Finish — White — Black — Silver

TL58A Track light



TL58A LED track light with internal driver adopts CITIZEN chips with high quality LED source, CRI80/90/97 optional. Secondary optics with lens make more uniform light.

Materials of Housing : Aluminium
Materials of Optics : PC

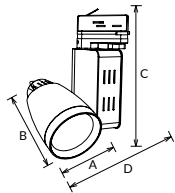


Code	Watt	Size(AxBxCmm)	Lumen(±5%)	N.W/pc(kgs)	Q'ty/CTN
TL58A-15W	15W	Ø65x131x 227	1650lm	0.52	12PCS
TL58A-25W	25W	Ø80x152.5x249	2750lm	0.82	12PCS
TL58A-35W	35W	Ø100x167x259	3850lm	1.10	12PCS

CCT — 2700K — 3000K — 4000K — Finish — White — Black — Silver

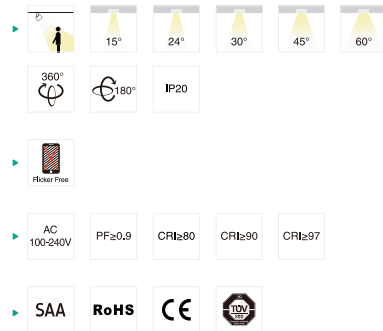


TL02 Track light



TL02 LED track light with internal driver adopts CREE/ CITIZEN branded chips, providing adjustable lighting orientation with 360 degree in horizontal direction and 180 in vertical direction.

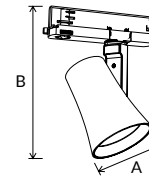
Materials of Housing : Die-casting Aluminium
Materials of Optics : PC



Code	Watt	Size(AxBxCxDmm)	Lumen(±5%)	N.W/pc(kgs)	Q'ty/CTN
TL02-12W	12W	Ø75x104x220x126.5	1380lm	0.70	12PCS
TL02-25W	25W	Ø90x121x233x141	2500lm	1.17	12PCS
TL02-35W	35W	Ø110x131x234x161	3600lm	1.30	8PCS
TL02-45W	45W	Ø110x131x234x161	4380lm	1.30	8PCS

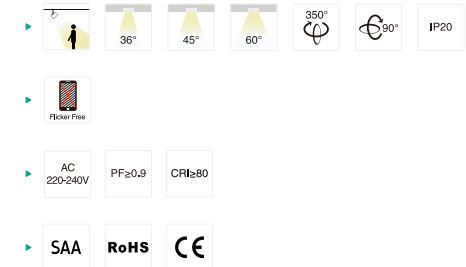
CCT — 2700K — 3000K — 4000K — Finish — White Black Silver

TL127 Track light



TL127 track light using high-lumen COB chip, the design presents a contrast and harmonious appearance, multi-beam Angle reflector, modular design, easy to replace. Track installation, suitable for clothing stores, hotels, exhibition rooms and other indoor commercial lighting.

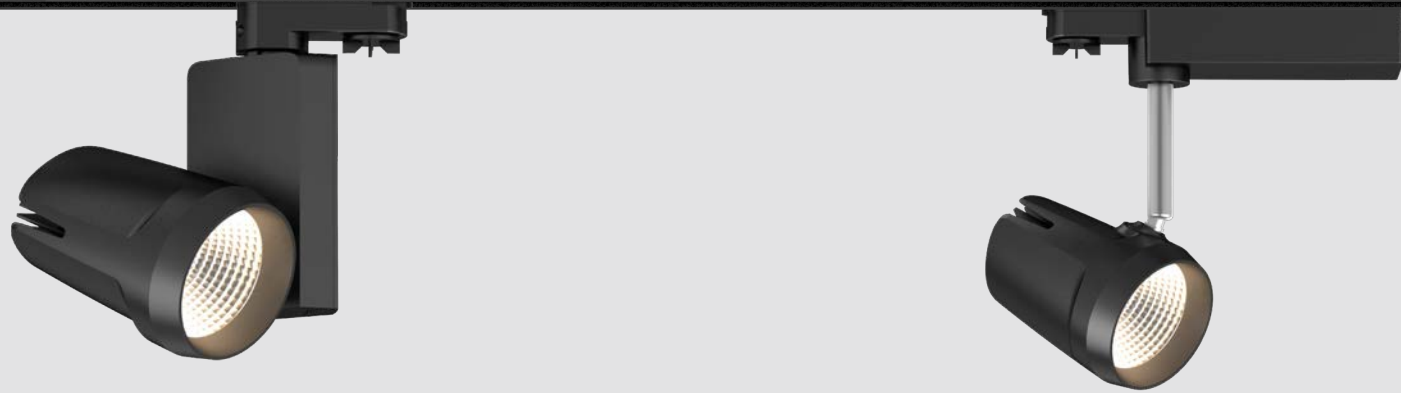
Materials of Housing : Aluminium
Materials of Optics : Aluminium



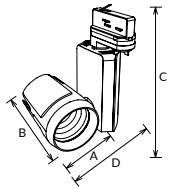
Code	Watt	Size(AxBmm)	Lumen(±5%)	N.W/pc(kgs)	Q'ty/CTN
TL127-86-16W	16W	Ø86x198	2200lm	0.44	12PCS
TL127-86-25W	25W	Ø86x198	3300lm	0.44	12PCS
TL127-97-25W	25W	Ø97x210	3300lm	0.56	12PCS
TL127-97-35W	35W	Ø97x210	4400lm	0.56	12PCS

CCT — 2700K — 3000K — 4000K — Finish — White Black Nickel

LED Track light



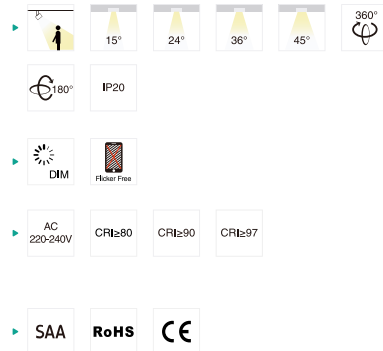
TL25 Track light



TL25 LED track light with dimming button on the bottom of the track light adopts CITIZEN LED, adjustable lighting orientation with 360 degree in horizontal direction and 180 in vertical direction, 1-circuit adapter, 3-circuit adapter available for wide choice.

Materials of Housing : Aluminium

Materials of Optics : PC



Code	Watt	Size(AxBxCxDmm)	Lumen(±5%)	N.W/pc(kgs)	Q'ty/CTN
TL25-15W	15W	Ø68x83x170x102	1470lm	0.38	18PCS
TL25-25W	25W	Ø90x118.5x215x146	2600lm	0.68	12PCS
TL25-35W	35W	Ø105x128x215x161	3600lm	0.85	12PCS
TL25-45W	45W	Ø105x128x215x161	4410lm	0.85	12PCS

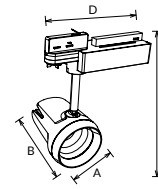
CCT ——— 2700K ——— 3000K ——— 4000K

Finish ——— White ——— Black

Dimming button (100% down to 5%)



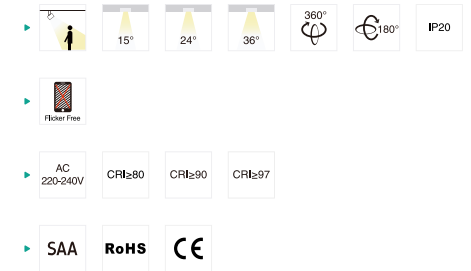
TL25B Track light



TL25B LED track light adopts CITIZEN LED, adjustable lighting orientation with 360 degree in horizontal direction and 180 in vertical direction and 1-circuit adapter, 3-circuit adapter available for wide choice.

Materials of Housing : Aluminium

Materials of Optics : PC



Code	Watt	Size(AxBxCxDmm)	Lumen(±5%)	N.W/pc(kgs)	Q'ty/CTN
TL25B-25W	25W	Ø90x118x247x207	2600lm	0.75	12PCS
TL25B-35W	35W	Ø105x128x262x207	3600lm	0.92	12PCS
TL25B-45W	45W	Ø105x128x262x207	4410lm	0.92	12PCS

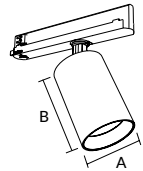
CCT ——— 2700K ——— 3000K ——— 4000K

Finish ——— White ——— Black ——— Silver

LED Track light



TL129 Track light



TL129 led track light is modular design with high lumen COB led, CRI80 and CRI90 both available, low glare with UGR<19, reflector is replaceable with various beam angle 24°/36°/50°, CCT interchangeable, triac dim and dali dim both available.

Materials of Housing : Aluminium
Materials of Optics : PC/Aluminium

- ▶
- ▶
- ▶
- ▶
- ▶

Code	Watt	Size(AxBmm)	Lumen(±5%)	N.W/pc(kgs)	Q'ty/CTN
TL129-65-10W	10W	Ø65x96	1250lm	0.39	24PCS
TL129-65-15W	15W	Ø65x96	1700lm	0.39	24PCS
TL129-85-20W	20W	Ø85x130	2300lm	0.72	12PCS
TL129-85-25W	25W	Ø85x130	2850lm	0.72	12PCS
TL129-85-27W-D	27W	Ø85x130	3100lm	0.74	12PCS
TL129-85-28W	28W	Ø85x130	3300lm	0.72	12PCS

CCT — 2700K — 3000K — 4000K

Finish — White Black



Lighting source interchangeable

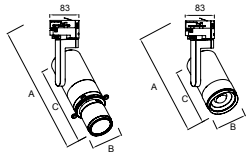
Reflector interchangeable

Honeycomb optional

MODULAR Design



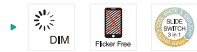
TL120 Track light



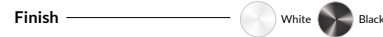
TL120 is a track spotlight with versatility and a high degree of flexibility in terms of combination, adopts high CRI COB light source. It can be horizontally rotated up to 350 degrees and vertically tilted up to 180 degrees, allowing for versatile lighting angles and directions, CCT Interchangeable is available. TL120A is dry damping design, TL120B adopt stepless zooming technology.

Materials of Housing : Die-casting Aluminium

Materials of Optics : Glass (TL120A)/ PC(TL120B)



Code	Watt	Size(AxBxCmm)	Lumen(±5%)	N.W/pc(kgs)	Q'ty/CTN
TL120A-32W-P2/D	32W	360x88.9x267	750lm	1.86	6PCS
TL120B-32W-P2/D	32W	263x92x170	3250lm	1.19	6PCS



DIY MODULE



TL120A

Optical-grade variable aperture design



Multi-layer dry damping design



Color



Projection



TL120B

ZOOM lens



Four-blade baffle



Stretch optics

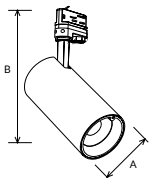


360° manual rotation design





TL135 Track light



TL135 track light, intelligent induction color change design. It can automatically adjust the color temperature according to the environmental color change, changing the color according to the need to achieve a variety of decorative effects. Very suitable for home, office, exhibition, display etc

Materials of Housing : Aluminium
Materials of Optics : PC

- ▶ 38° 350° 30°
- ▶ Flicker Free
- ▶ AC 110-240V PF ≥ 0.9 CRI ≥ 95
- ▶ SAA RoHS CE

Code	Watt	Size(AxBmm)	Lumen(±5%)	N.W/pc(kgs)	Q'ty/CTN
TL135-33W	33W	Ø100x294	1800lm	1.24	6PCS

CCT ——— 2700K ——— 3000K ——— 5100K

Finish ——— Black



TL135

2700K-5100K

Colour-Sensor

LED Track light

4000K Ra95

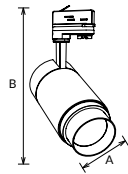
TL135

SUNLIGHT





TL56 Track light



TL56 track light with simple and elegant design. One track light with adjustable beam angle varies from 15° to 60°, creating a diversified and dramatic atmosphere. Lens optical design with even light output. Changeable lighting orientation with 350° in horizontal direction and 90° in vertical direction. Single CCT and interchangeable CCT available.

Materials of Housing : Aluminium
Materials of Optics : PC

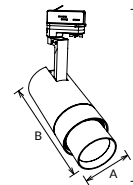
- ▶ 15°-60° beam angle, 350° horizontal rotation, 90° vertical rotation, IP20
- ▶ DIM, Flicker free, SAA, RoHS, CE, CB, TÜV
- ▶ AC 220-240V, PF≥0.9, CRI≥80, CRI≥90, CRI≥97

Code	Watt	Size(AxBxCmm)	Lumen(±5%)	N.W/pc(kgs)	Q'ty/CTN
TL56-10W-D	10W	Ø65x234	960lm	0.69	12PCS
TL56-25W-D	25W	Ø80x260	2500lm	0.91	12PCS
TL56-30W-D	30W	Ø100x260	2800lm	1.29	12PCS
TL56-15W	15W	Ø65x234	1500lm	0.69	12PCS
TL56-25W	25W	Ø80x260	2500lm	0.91	12PCS
TL56-30W	30W	Ø100x265	3000lm	1.29	12PCS
TL56-25W-C3 NEW	25W	Ø80x260	2250lm	0.91	12PCS
TL56-30W-C3 NEW	30W	Ø100x260	2750lm	1.29	12PCS

CCT — 2700K — 3000K — 4000K

Finish — White — Black

TL17 Track light



TL17 LED tracklight, using advancing zooming technology, have a flexible beam angle from 10° to 60°. Flicker free LED driver. Dimmable for option.

Materials of Housing : Aluminium
Materials of Optics : PC

- ▶ 10°-60° beam angle, 320° horizontal rotation, 90° vertical rotation, IP20
- ▶ DIM, Flicker free, SAA, RoHS, CE
- ▶ AC 200-240V, PF≥0.9, CRI≥80, CRI≥90, CRI≥97

Code	Watt	Size(AxBxCmm)	Lumen(±5%)	N.W/pc(kgs)	Q'ty/CTN
TL17-35W	35W	Ø100x207x301	1790-3720lm	1.53	6PCS

CCT — 2700K — 3000K — 4000K

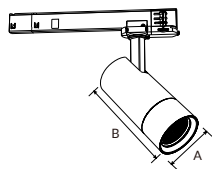
Finish — White — Black — Silver

LED Track light

Adjustable beam angle from 24°~60°



TL149 NEW Track light



TL149 Track light is lens and honeycomb louver design, adjustable lighting orientation with horizontal 350° and vertically 90° and adjustable beam angle from 24°~60°, CRI90, 3CCT, adjustable power, triac and DALI dimmable function available.

Materials of Housing : Aluminium
Materials of Optics : PC

- ▶ 24°-60° 30°-60° 350° 90° IP20
- ▶ DIM Flicker Free SAA Adjustable Power
- ▶ AC 220-240V PF≥0.9 CRI≥90
- ▶ SAA RoHS CE

Code	Watt	Size(AxBxCmm)	Lumen(±5%)	N.W/pc(kgs)	Q'ty/CTN
TL149-65-20W-A3	10W/15W/20W	Ø65x145	1600lm	1.40	12PCS
TL149-80-35W-A3	25W/30W/35W	Ø80x171	2800lm	1.60	12PCS



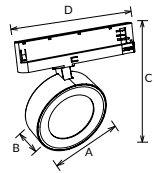
24~60° effect

CCT ——— 2700K ——— 3000K ——— 4000K

Finish ——— White Black

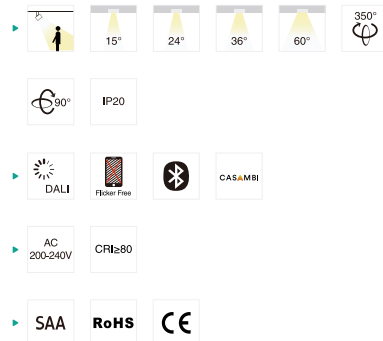


TL79 Track light



TL79 track light is an integrated design with internal driver and 3 circuit adapter. It is with interchangeable lens 15°/24°/36°/60° and Replaceable rings Black/White/Gold/Silver.

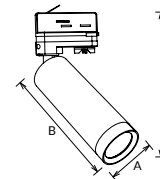
Materials of Housing : PC/Aluminium
Materials of Optics : PMMA



Code	Watt	Size(AxBxCxDmm)	Lumen(±5%)	N.W/pc(kgs)	Q'ty/CTN
TL79-10W	10W	Ø90x43x146x196	1250lm	0.44	12PCS
TL79-18W	18W	Ø90x43x146x196	2150lm	0.44	12PCS
TL79-25W	25W	Ø120x43x178x207	2950lm	0.61	12PCS
TL79-30W	30W	Ø120x43x178x207	3350lm	0.61	12PCS
TL79-13W-DA	13W	Ø90x43x146x265	1600lm	0.52	12PCS
TL79-20W-DA	20W	Ø90x43x146x265	2300lm	0.52	12PCS
TL79-25W-DA	25W	Ø120x43x176x260	2650lm	0.65	12PCS
TL79-30W-DA	30W	Ø120x43x178x260	3200lm	0.65	12PCS

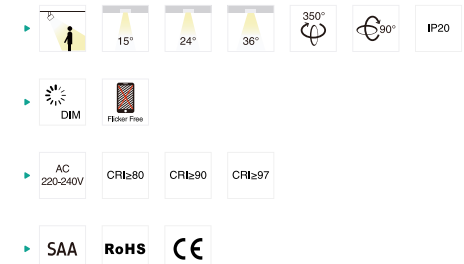
CCT — 2700K — 3000K — 4000K — Trim — White Black Silver Golden

TL40B Track light



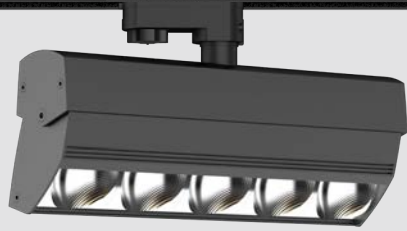
TL40B led track light adopts Citizen chip which can create a diversified and dramatic atmosphere. Adjustable lighting orientation with 350° in horizontal direction and 90° in vertical direction will bring a flexible exposure. 1-circuit and 3-circuit are all available.

Materials of Housing : Aluminium
Materials of Optics : PC

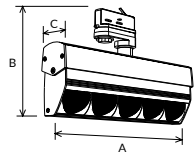


Code	Watt	Size(AxBxCmm)	Lumen(±5%)	N.W/pc(kgs)	Q'ty/CTN
TL40B-10W	10W	Ø54x162x236	1000lm	0.45	24PCS
TL40B-12W	12W	Ø54x162x236	1200lm	0.45	24PCS

CCT — 2700K — 3000K — 4000K — Finish — White Black Silver



TL121 Track light



TL121 Track light is adjustable design with horizontal rotation 355°, vertical rotation 18°. The polarized track avoids direct light from the light source and reduces the luminous area perceived by the outside world. The relatively small size can wash very wide shelves, with uniform illumination and wide irradiation range.

Materials of Housing : Aluminium

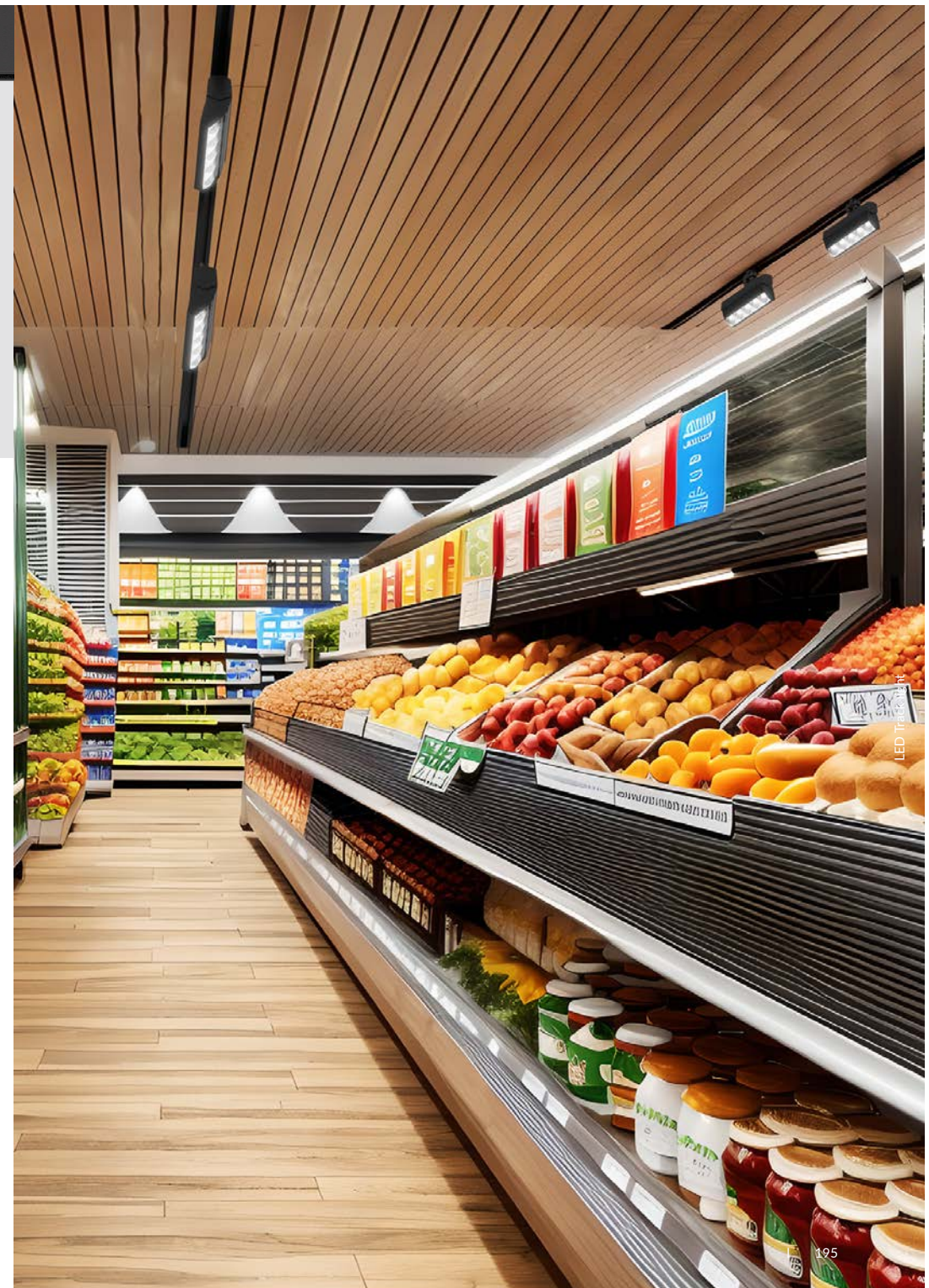
Materials of Optics : PC

- ▶ 20° 355° 18° IP20
- ▶ DIM DALI Flicker Free
- ▶ AC 200-240V PF≥0.9 CRI≥80 CRI≥90
- ▶ SAA RoHS CE

Code	Watt	Size(AxBxCmm)	Lumen(±5%)	N.W/pc(kgs)	Q'ty/CTN
TL121-35W	35W	310x118x50	3850lm	1.26	6PCS
TL121-40W	40W	310x118x50	4400lm	1.26	6PCS

CCT ——— 2700K ——— 3000K ——— 4000K

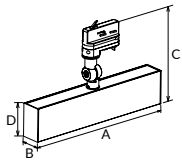
Finish ——— White Black



LED TRACKING



TL49 Track light



TL49 LED linear track light with louver reflector design. It's widely used as additional lighting compared with traditional spot track light. Adopt 2835SMD chip, louver reflector make it anti-glare, Adjustable lighting orientation with 350° in horizontal direction and 220° in vertical direction.

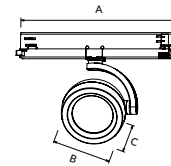
Materials of Housing : Aluminium
Materials of Optics : PC+ABS

- ▶
- ▶
- ▶
- ▶

Code	Watt	Size(AxBxCxDmm)	Lumen(±5%)	N.W/pc(kgs)	Q'ty/CTN
TL49-15W	15W	319.5x42x195.5x70	1400lm	0.74	12PCS
TL49-30W	30W	424.5x42x195.5x70	2750lm	0.92	12PCS
TL49-37W	37W	529.5x42x195.5x70	3400lm	1.15	12PCS
TL49-45W	45W	529.5x42x195.5x70	3850lm	1.15	12PCS

CCT — 3000K 4000K 5700K Finish — White Black Silver

TL110 Track light



TL110 is a compact and exquisite track light. It adopts high lumen branded COB light source, special texture designed lens lowered glare to create a comfortable visual experience. Horizontally and vertically 350 degree rotation can be freely adjusted.

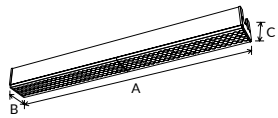
Materials of Housing : Aluminium
Materials of Optics : PMMA

- ▶
- ▶
- ▶
- ▶

Code	Watt	Size(AxBxCmm)	Lumen(±5%)	N.W/pc(kgs)	Q'ty/CTN
TL110-20W	20W	158x108x74	2350lm	0.63	12PCS
TL110-30W	30W	250x108x74	3400lm	0.67	12PCS

CCT — 2700K 3000K 4000K Finish — White Black Silver

TL151A ^{NEW} Track light



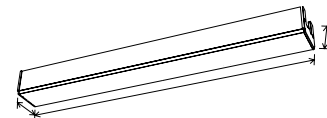
TL151A is linear track light with SMD design, lens design with symmetric beam and asymmetric beam. High lumen efficiency up to 180lm/W. It is integral driver design. Splicing is available.

Materials of Housing : Aluminium
Materials of Optics : PC

- ▶
- ▶
- ▶
- ▶
- ▶

Code	Watt	Size(AxBmm)	Lumen(±5%)	N.W/pc(kgs)	Q'ty/CTN
TL151A-600-30W-A4	20W/22W/26W/30W	605.8x79.5x61.5	5400lm	0.98	6PCS
TL151A-1200-60W-A4	39W/46W/53W/60W	1205.8x79.5x61.5	11000lm	1.95	4PCS
TL151A-1500-75W-A4	51W/59W/67W/75W	1505.8x79.5x61.5	13600lm	2.25	2PCS
TL151A-1500-100W-A4	70W/80W/90W/100W	1505.8x79.5x61.5	17500lm	2.25	2PCS

TL151B ^{NEW} Track light



TL151B linear track light is SMD design, opal diffuser with symmetric beam. High lumen efficiency up to 180lm/W. It is integral driver design. Splicing is available.

Materials of Housing : Aluminium
Materials of Optics : PC

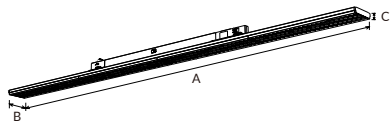
- ▶
- ▶
- ▶
- ▶
- ▶

Code	Watt	Size(AxBmm)	Lumen(±5%)	N.W/pc(kgs)	Q'ty/CTN
TL151B-600-30W-A4	20W/22W/26W/30W	605.4x78x75	5050lm	0.94	6PCS
TL151B-1200-60W-A4	39W/46W/53W/60W	1205.4x78x75	10900lm	1.95	4PCS
TL151B-1500-75W-A4	51W/59W/67W/75W	1505.4x78x75	13100lm	2.25	2PCS
TL151B-1500-100W-A4	70W/80W/90W/100W	1505.4x78x75	17400lm	2.25	2PCS

CCT — 2700K — 3000K — 4000K — Finish — White Black

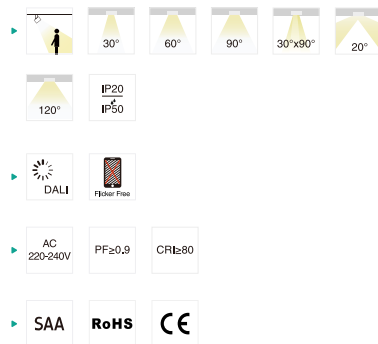
CCT — 2700K — 3000K — 4000K — Finish — White Black

TL161A ^{NEW} Track light



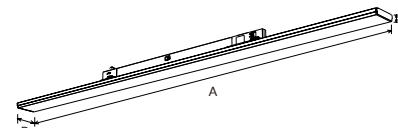
TL161A Track light is a new type of super slim high-efficiency linear track light. Type A applies a high-transmission PC optical lens, 30°/60°/90°/30°90°/double asymmetric 20° to have various lighting distribution. Type B adopts opal cover for uniform illumination. All of which support DIP switch power adjustment. It also can be flexibly combined with track spotlights on the same track rail for general lighting & accent lighting. Applicable for retrofit and new mounting with EU standard track system.

Materials of Housing : Aluminium
Materials of Optics : PC



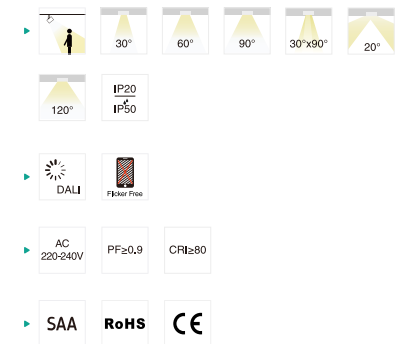
Code	Watt	Size(AxBxCmm)	Lumen(±5%)	N.W/pc(kgs)	Q'ty/CTN
TL161A-600-30W	30W	606.2x65.9x62.4	5400lm	0.85	12PCS
TL161A-1200-60W	60W	1206.2x65.9x62.4	11100lm	1.42	6PCS
TL161A-1500-75W	75W	1506.2x65.9x62.4	13600lm	1.69	6PCS

TL161B ^{NEW} Track light



TL161B Track light is a new type of super slim high-efficiency linear track light. Type A applies a high-transmission PC optical lens, 30°/60°/90°/30°90°/double asymmetric 20° to have various lighting distribution. Type B adopts opal cover for uniform illumination. All of which support DIP switch power adjustment. It also can be flexibly combined with track spotlights on the same track rail for general lighting & accent lighting. Applicable for retrofit and new mounting with EU standard track system.

Materials of Housing : Aluminium
Materials of Optics : PC



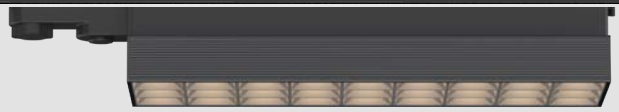
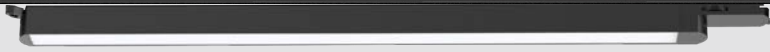
Code	Watt	Size(AxBxCmm)	Lumen(±5%)	N.W/pc(kgs)	Q'ty/CTN
TL161B-600-30W	30W	607.4x65.9x75.4	5100lm	0.70	12PCS
TL161B-1200-60W	60W	1207.4x65.9x75.4	10900lm	1.20	6PCS
TL161B-1500-75W	75W	1507.4x65.9x75.4	13100lm	1.45	6PCS

CCT ——— 2700K ——— 3000K ——— 4000K

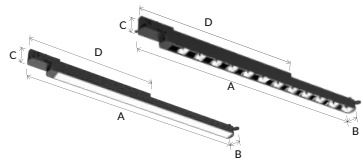
Finish ——— White ——— Black

CCT ——— 2700K ——— 3000K ——— 4000K

Finish ——— White ——— Black



TL50/B Track light



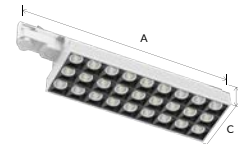
TL50 LED linear track light is a concise design with internal flicker free led driver. Adopting high lumen efficiency SMD LED. Interchangeable CCT with slide switch is available.

Materials of Housing : Aluminium
Materials of Optics : PC

- ▶ 110°
- ▶
- ▶
- ▶

Code	Watt	Size(AxBxCxDmm)	Lumen(±5%)	N.W/pc(kgs)	Q'ty/CTN
TL50/B-10W	10W	650x32.5x52x436	1000lm	0.43	12PCS
TL50/B-16W	16W	650x32.5x52x436	1560lm	0.45	12PCS
TL50/B-25W	25W	1212x32.5x52x496	2550lm	0.76	12PCS
TL50/B-30W	30W	1212x32.5x52x496	3000lm	0.76	12PCS
TL50/B-30W	30W	1493x32.5x52x496	3000lm	0.92	12PCS

TL109 Track light



TL109 track light with both high lumen efficiency and low UGR. It adopts super high lumen SMD light source, combine with honeycomb optic reflector to reach a low UGR<19. Standard European 3 circuits track and multiple beam angles for options.

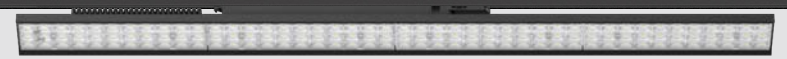
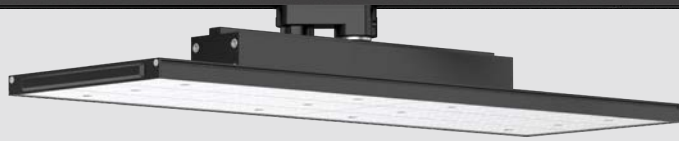
Materials of Housing : Aluminium
Materials of Optics : PC

- ▶ 15° 24° 36° 45° 35°x70°
- ▶
- ▶
- ▶

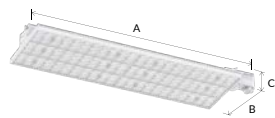
Code	Watt	Size(AxBxCmm)	Lumen(±5%)	N.W/pc(kgs)	Q'ty/CTN
TL109-52W	52W	435x123x96	7000lm	1.62	6PCS

CCT — 3000K 4000K 5700K Finish — White Black Silver

CCT — 3000K 4000K 5700K Finish — White Black



TL111 Track light



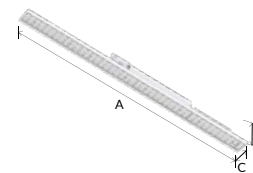
TL111 LED track light with Osram brand driver is specifically designed for supermarket aisles. Type A with an adapter at the side while type B with adapter at the back and can do 350 degree rotary. European standard three-circuit track system is suitable. High lumen efficiency 130-140lm/W is available.

Materials of Housing : Aluminium
Materials of Optics : PMMA

- ▶ IP20
- ▶
- ▶
- ▶

Code	Watt	Size(AxBxCmm)	Lumen(±5%)	N.W/pc(kgs)	Q'ty/CTN
TL111A-50W	50W	670x190x80	7040lm	2.50	6PCS
TL111A-60W	60W	670x190x80	8250lm	2.50	6PCS
TL111A-80W	80W	670x190x80	10480lm	2.50	6PCS
TL111B-50W	50W	582x190x116	7040lm	2.50	6PCS
TL111B-60W	60W	582x190x116	8250lm	2.50	6PCS
TL111B-80W	80W	582x190x116	10480lm	2.50	6PCS

TL112 Track light



TL112 a new seamless linear track lighting system, which has thin body, light weight and compact structure, suitable for European standard three-circuit track system. Multiple PMMA lens optics 30°, 60°, 90°, double asymmetric 20° for options.

Materials of Housing : Aluminium
Materials of Optics : PMMA

- ▶
- ▶
- ▶
- ▶

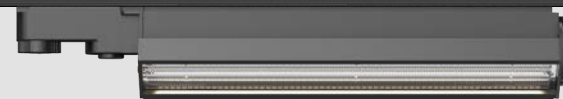
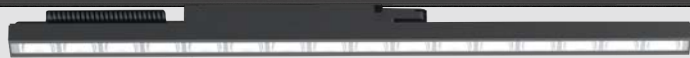
Code	Watt	Size(AxBxCmm)	Lumen(±5%)	N.W/pc(kgs)	Q'ty/CTN
TL112-40W	40W	1152x80x85	5100lm	2.17	6PCS
TL112-60W	60W	1152x80x85	7150lm	2.17	6PCS

CCT — 3000K — 4000K — 5700K

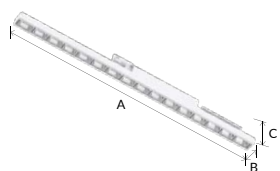
Finish — White Black

CCT — 3000K — 4000K — 5700K

Finish — White Black



TL113 Track light



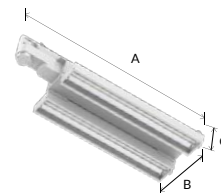
TL113 a new seamless linear track lighting system with Osram brand driver, which has thin body, light weight and compact structure, suitable for European standard three-circuit track system. Optic design combines with diffuser and reflector, which make more uniform light output.

Materials of Housing : Aluminium
Materials of Optics : PC

- ▶ 30°x60° 60°x90° IP20
- ▶ Flicker Free
- ▶ AC 220-240V PF≥0.9 CRI≥80
- ▶ SAA RoHS CE

Code	Watt	Size(AxBxCmm)	Lumen(±5%)	N.W/pc(kgs)	Q'ty/CTN
TL113-47W	47W	1142x60x98	6300lm	2.05	6PCS
TL113-63W	63W	1142x60x98	8550lm	2.05	6PCS

TL114 Track light



TL114 is designed specifically for supermarket aisles, shelves, corridors etc. The light source is divided into left and right parts, which can be rotated upwards by 90°. The unique structural design allows the product to fit different aisle widths and installation heights with high flexibility. A great compatibility with European standard 3-circuit track and convenient for group control.

Materials of Housing : Aluminium
Materials of Optics : PC

- ▶ 60°x90° 90°x100° 90° IP20
- ▶ Flicker Free
- ▶ AC 220-240V PF≥0.9 CRI≥80
- ▶ SAA RoHS CE

Code	Watt	Size(AxBxCmm)	Lumen(±5%)	N.W/pc(kgs)	Q'ty/CTN
TL114-57W	57W	416x135x60	7100lm	1.2	6PCS

CCT — 3000K 4000K 5700K

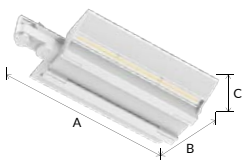
Finish — White Black

CCT — 3000K 4000K 5700K

Finish — White Black



TL115 Track light



TL115 is a two-wing bionic design and has a unique rectangular light distribution that guides users eyes to the shelf. At the same time, the illumination on the ground will not be too high, which can greatly improve the utilization rate of light and reduce energy consumption. The wings can be tilted downward by 30°, which is convenient to adjust the beam angle and meet the requirements of different aisle widths and installation heights.

Materials of Housing : Aluminium
Materials of Optics : PC

- ▶ 60°x90° 90°x100° 30° IP20
- ▶ Flicker Free
- ▶ AC 200-240V PF≥0.9 CRI≥80
- ▶ SAA RoHS CE

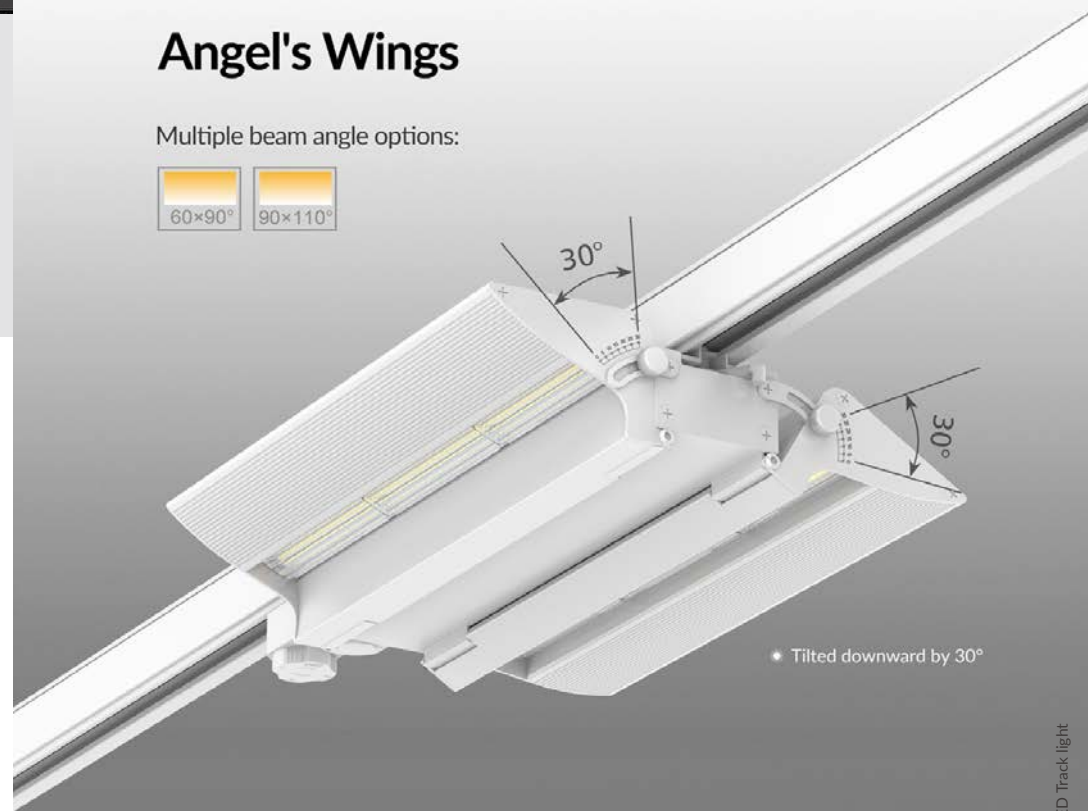
Code	Watt	Size(AxBxCmm)	Lumen(±5%)	N.W/pc(kgs)	Q'ty/CTN
TL115-57W	57W	388x218x70	5500lm	1.52	6PCS

CCT ——— 3000K ——— 4000K ——— 5700K

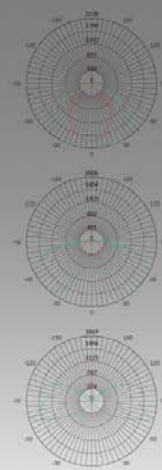
Finish ——— White Black

Angel's Wings

Multiple beam angle options:



• Tilted downward by 30°



LED Track light