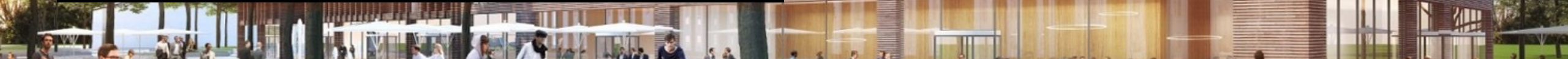


Location portfolio

# Cologne Schanzen- strasse

**DESIGN OFFICES**





# Location information

Cologne Schanzenstrasse



# Overview



**Design Offices**  
**Cologne Schanzenstrasse**  
Am Kabellager 11-13  
51063 Cologne  
[koeln.schanzenstrasse@designoffices.de](mailto:koeln.schanzenstrasse@designoffices.de)

**Staffed opening hours**  
Monday – Friday:  
8:00 am – 6:00 pm

**Contact for event queries**  
+49 221 65086-333  
[mice.nrw@designoffices.de](mailto:mice.nrw@designoffices.de)





# Highlights



1

## The new face of Schanzenstrasse

There's a lot going on in Cologne-Mülheim. On the right-hand side of the Rhine, on Mülheim's busy Schanzenstrasse street, offices, hotels, gastronomy and sports & fitness facilities are laying the foundations for a new quarter covering a gross floor area of 160,000 m<sup>2</sup>. Plans are being made here to create a new platform for modern companies, young start-ups and well-known big players at this established office location. Here, at Mülheim's former freight depot, plans are being made for over 7,000 people to work in innovative sectors.

## Perfect work-life balance

The area promises a high standard of living and working thanks to the wide range of cultural and leisure offers nearby.

2



4

## Infrastructure

The new quarter has two bus stops from where you can reach the high-speed ICE train station Cologne Messe-Deutz (Cologne Trade Fair/Deutz) and Cologne Central Station. And Cologne/Bonn Airport is just 20 minutes away.










3

## Plenty of room for New Work

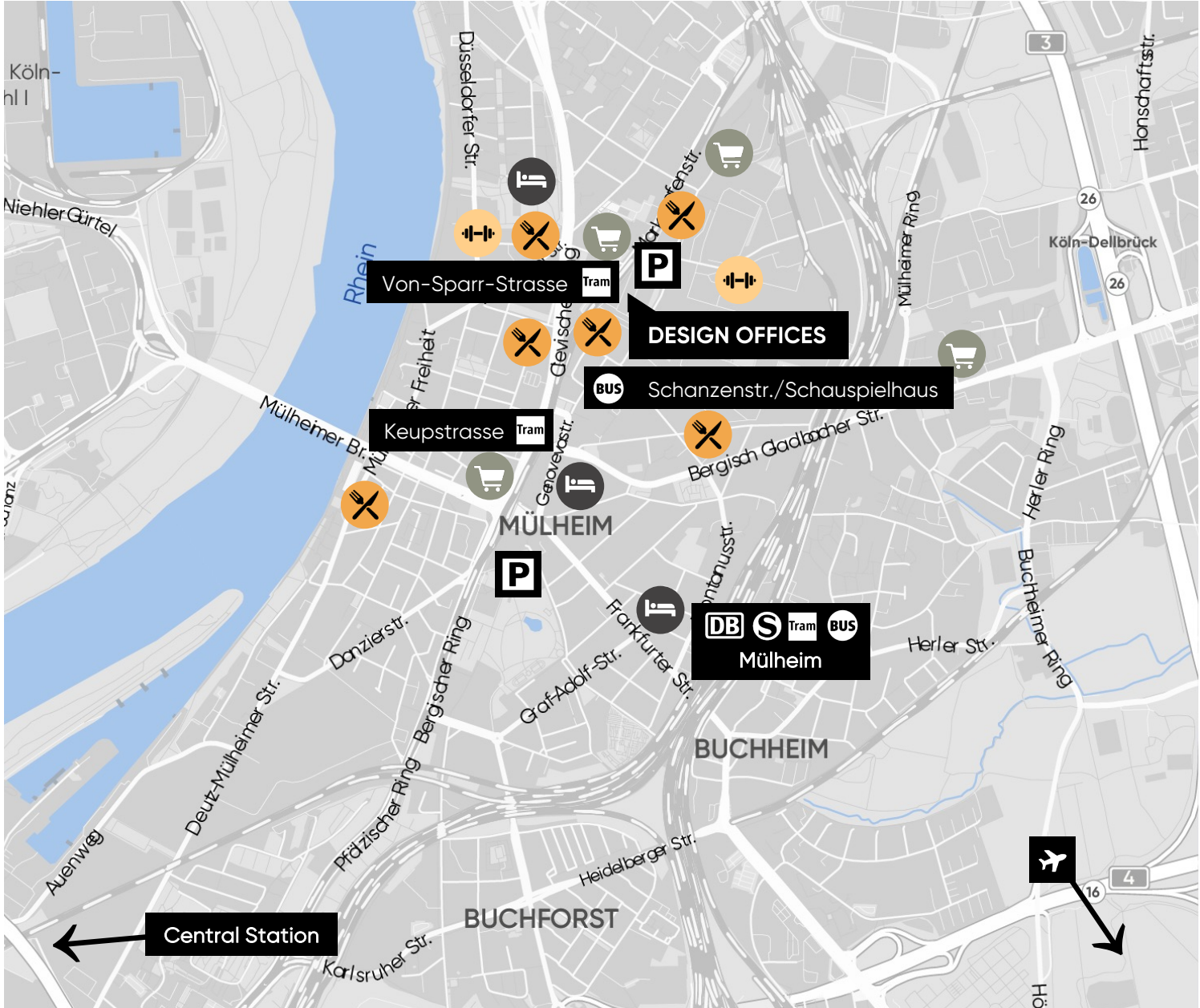
In a former freight depot that was once a cornerstone of industrialisation, Design Offices has opened its fourth location in Cologne. Located on Schanzenstrasse, the building is defined by its loft-like architecture with high ceilings, an abundance of natural light and transparency covering more than 13,000 m<sup>2</sup> – the perfect canvas on which to create flexible office and conference spaces. Due to its proximity to the former freight depot, it still exudes a unique industrial charm.



# Surroundings

-  Von-Sparr-Strasse **400 m**
-  Schanzenstr./Schauspielhaus **200 m**
-  Cologne-Mülheim **1.7 km**
-  Cologne Airport **18 km**
-  Via the **A59 and B9**
-  **Customer parking spaces**  
(Schanzenstrasse, 51063 Cologne)
-  **Multi-storey car park**  
(Schanzenstrasse, 51063 Cologne)

-  Restaurants
-  Hotels
-  Supermarket
-  Sport





# Floor plans


Cologne Schanzenstrasse



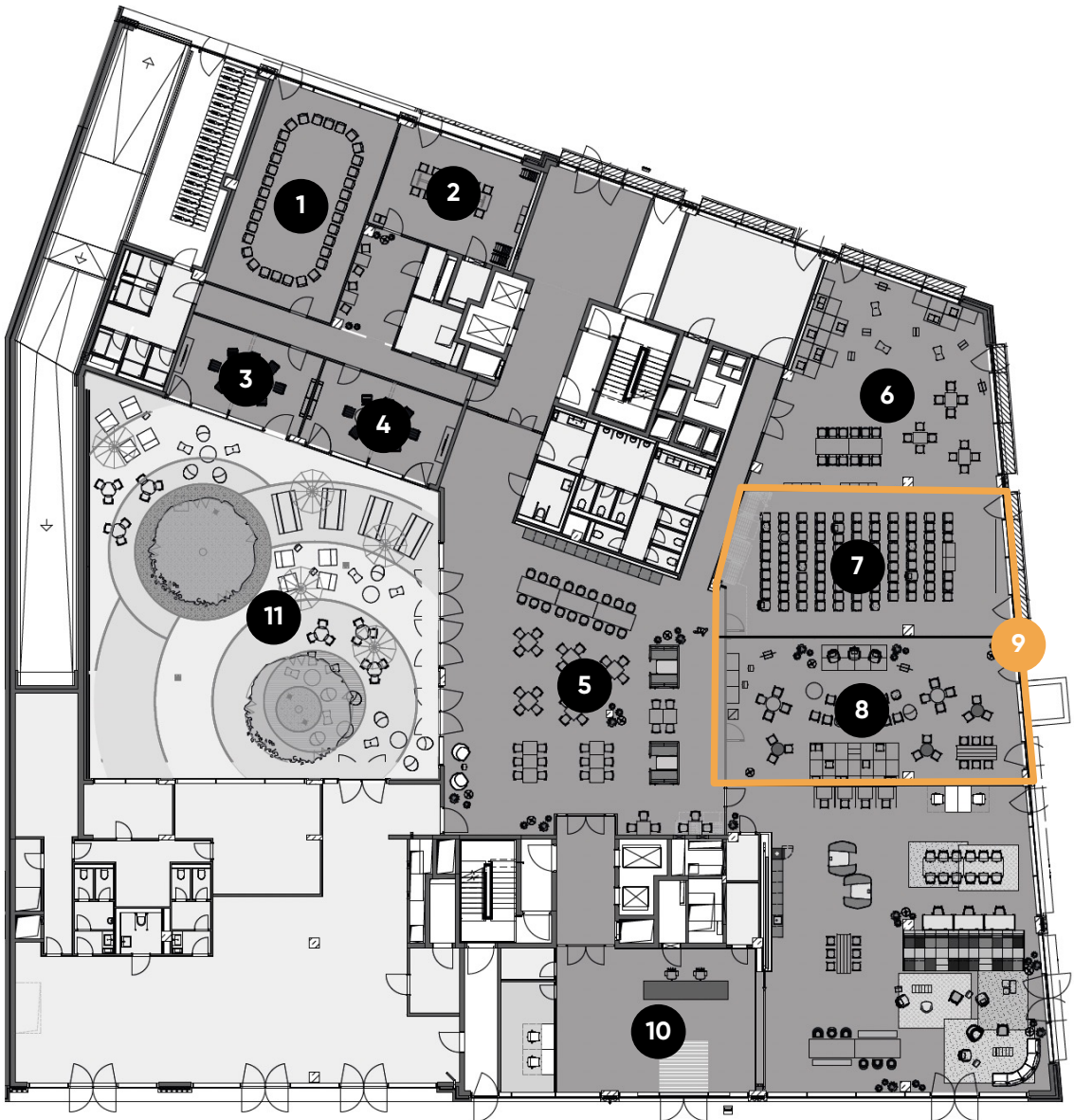


# Ground floor

Meeting & conference spaces

 With flexible walls

- 1** Training Room I
- 2** Meet & Move Room
- 3** Fireside Room I
- 4** Fireside Room II
- 5** Eatery
- 6** Work Lab
- 7** Training Room II
- 8** Training Room III
- 9** Training Room II + III
- 10** Reception
- 11** Courtyard





# Ground floor

Meeting & conference spaces

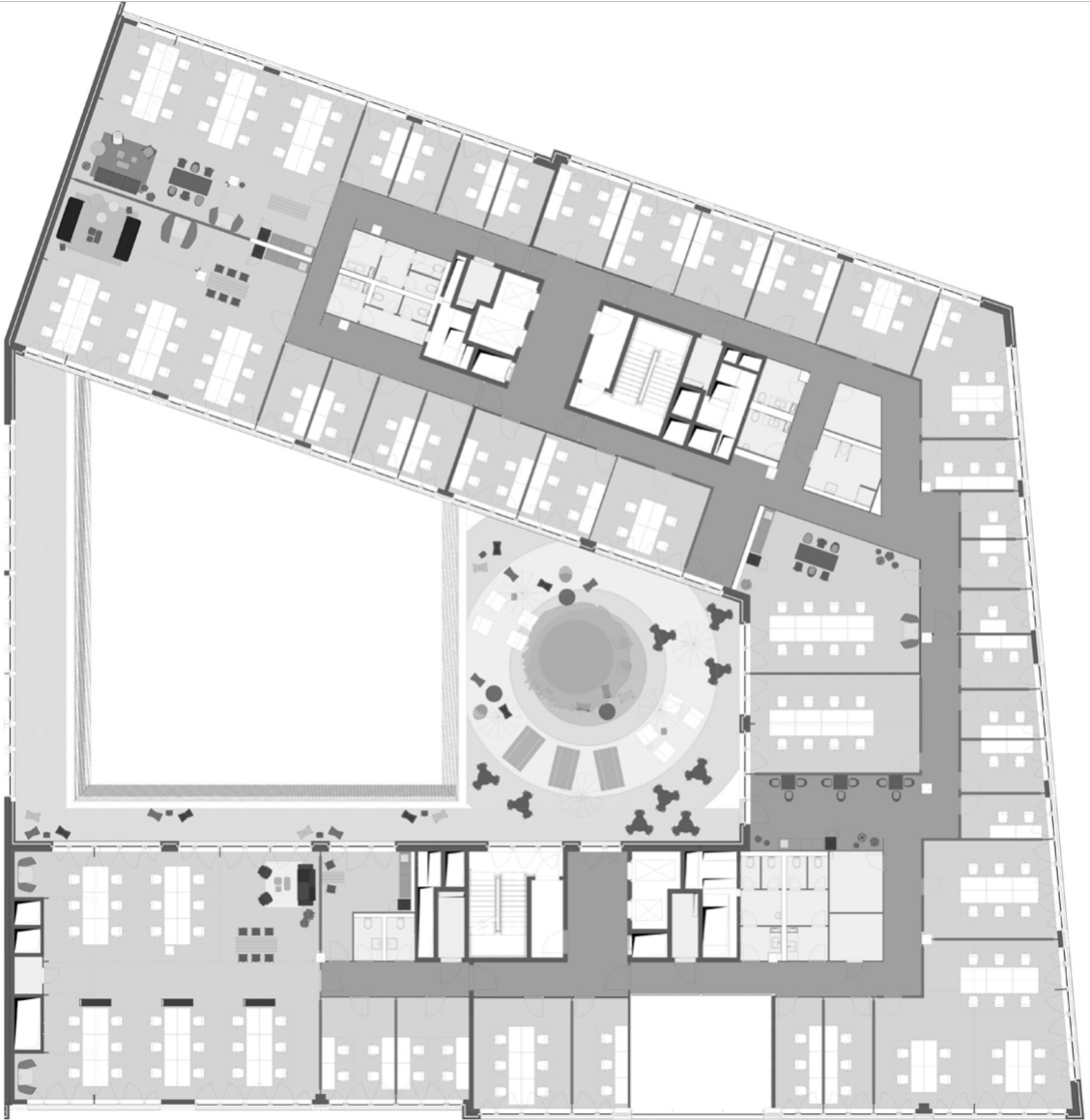


		m <sup>2</sup>	L x W x H in metres	New Work	U-shaped	Parliamentary	Theatre	Block	Circle	Banquet
1	Training Room I	86		35	20	40	60	20	20	
2	Meet & Move Room	47						12		
3	Fireside Room I	36						8		
4	Fireside Room II	37						8		
5	Eatery									
6	Work Lab	127		50	30	40	65	20	20	
7	Training Room II	122		40	20	36	65	30	20	
8	Training Room III	128		40	20	36	65	30	20	
9	Training Room II + III	250		140		80	200+			
10	Reception			Unique outdoor furniture						
11	Courtyard	86		35	20	40	60	20	20	



# 1st floor

Fixed offices





# 2nd floor

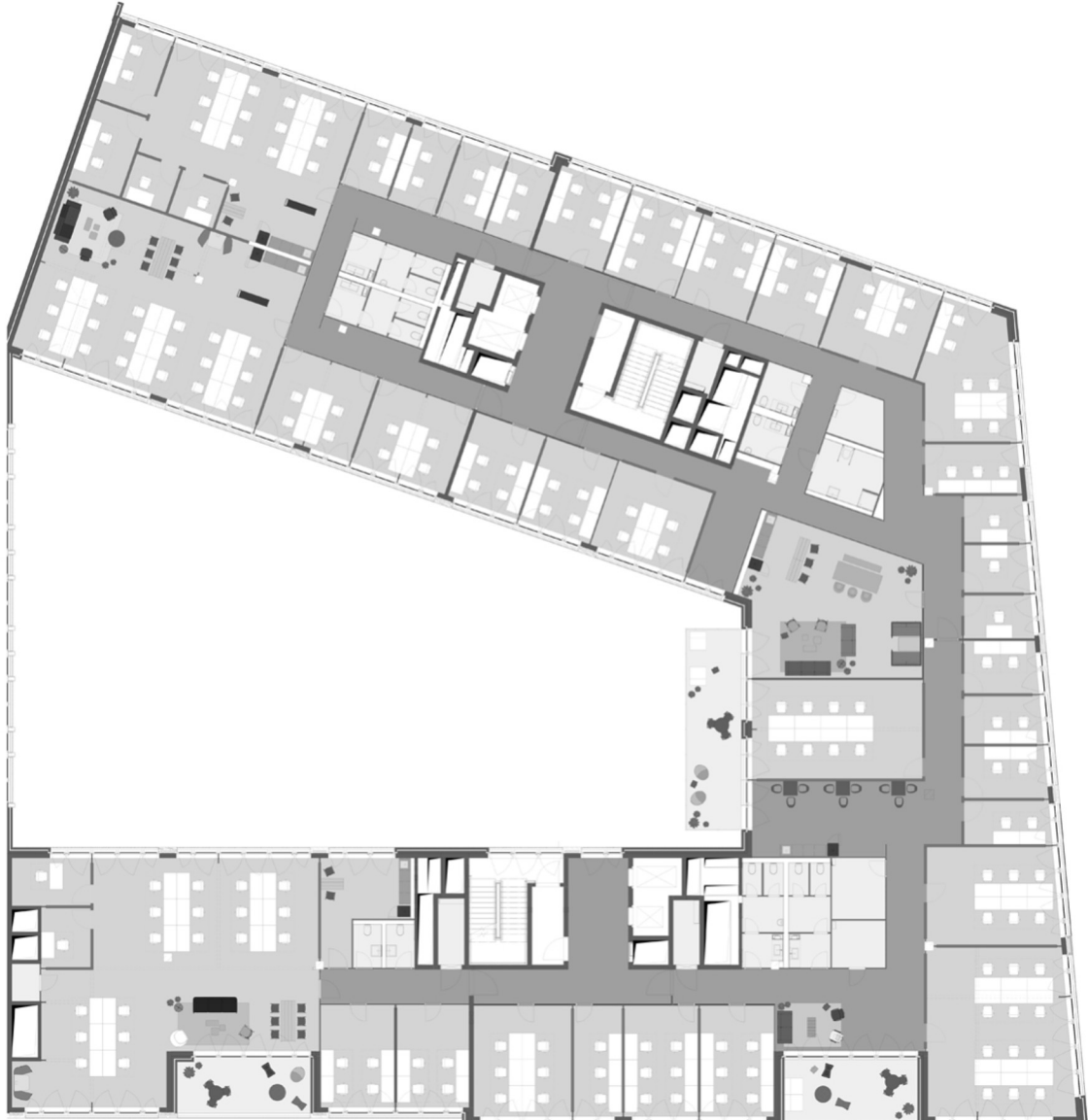
Fixed offices





# 3rd floor

Fixed offices





# 4th floor

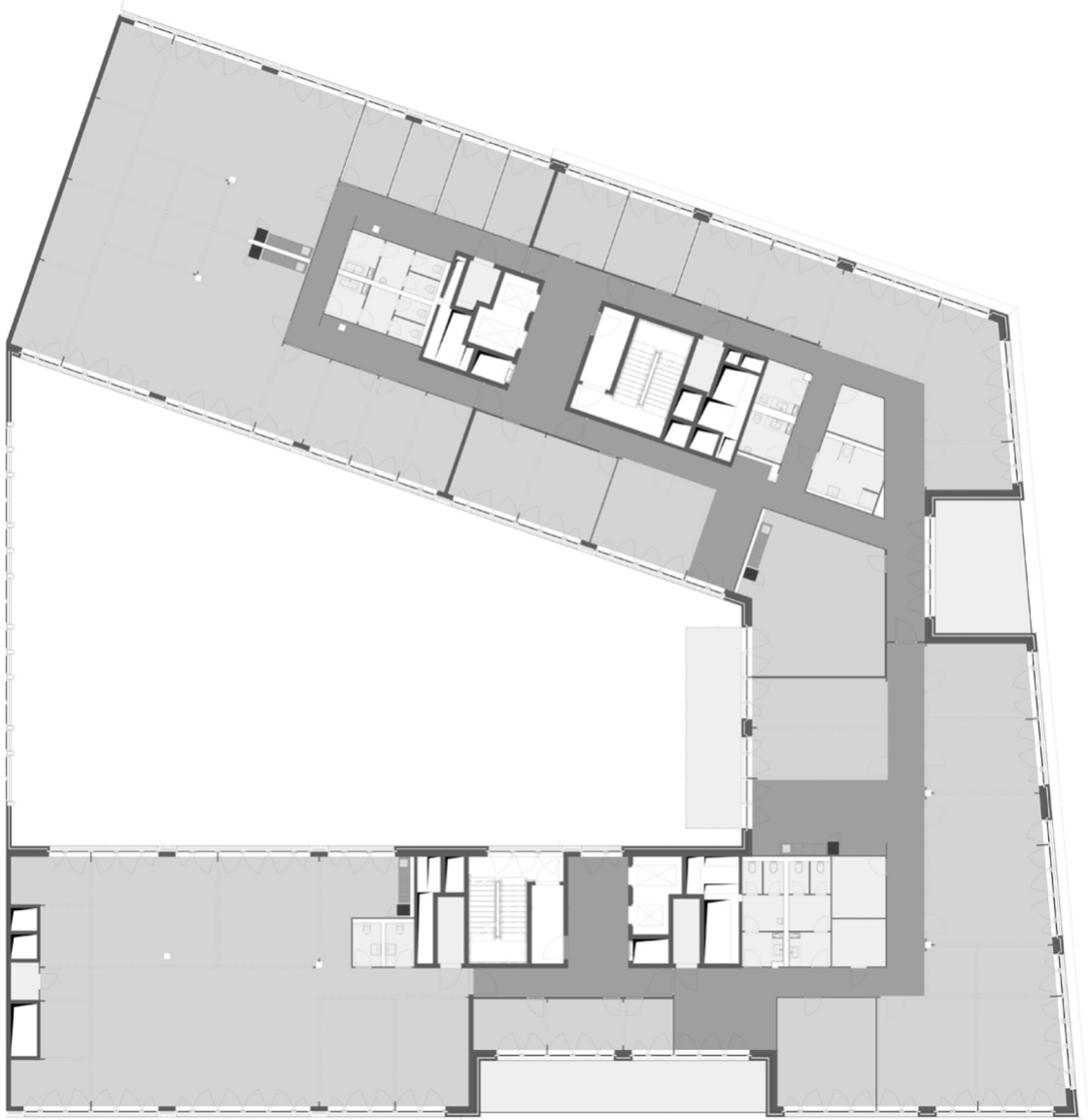
Fixed offices





# 5th floor

Fixed offices



# 6th floor

Fixed offices

