

Location portfolio

# Cologne Dominium

**DESIGN OFFICES**

# Location information

Cologne Dominium

# Overview



## Design Offices

### Cologne Dominium

Tunisstrasse 19-23

50667 Cologne

[koeln.dominium@designoffices.de](mailto:koeln.dominium@designoffices.de)

## Staffed opening hours

Monday – Friday:

8:00 am – 6:00 pm

## Contact for event queries

+49 221 65086-333

[mice.koeln@designoffices.de](mailto:mice.koeln@designoffices.de)



# Highlights



1

## Various outdoor spaces

From the leafy courtyard to the different roof terraces, a number of versatile outdoor spaces round off the New Work vibes to perfection and also offer fantastic views of Cologne Cathedral.

## Prime location

Profit from the perfect connections to regional and long-distance public transport and the airport. The neighbourhood is home to a wide range of bars, cafés and restaurants, a number of hotels and plenty of shops. Simply rent an entire floor and enjoy your own exclusive workspace for you and your team.

2



## Prestigious address close to Cologne Cathedral





Our office location Cologne Dominion is right in the heart of the city, just a few steps away from its popular landmark, Cologne Cathedral. The eye-catching building complex is a masterpiece of urban development in a prime location. From co-working desks to offices for small teams to large project spaces, there is something for everyone here. The working areas cover an impressive area of more than 9,000 m<sup>2</sup> over nine floors and provide enough space for your projects and visions.

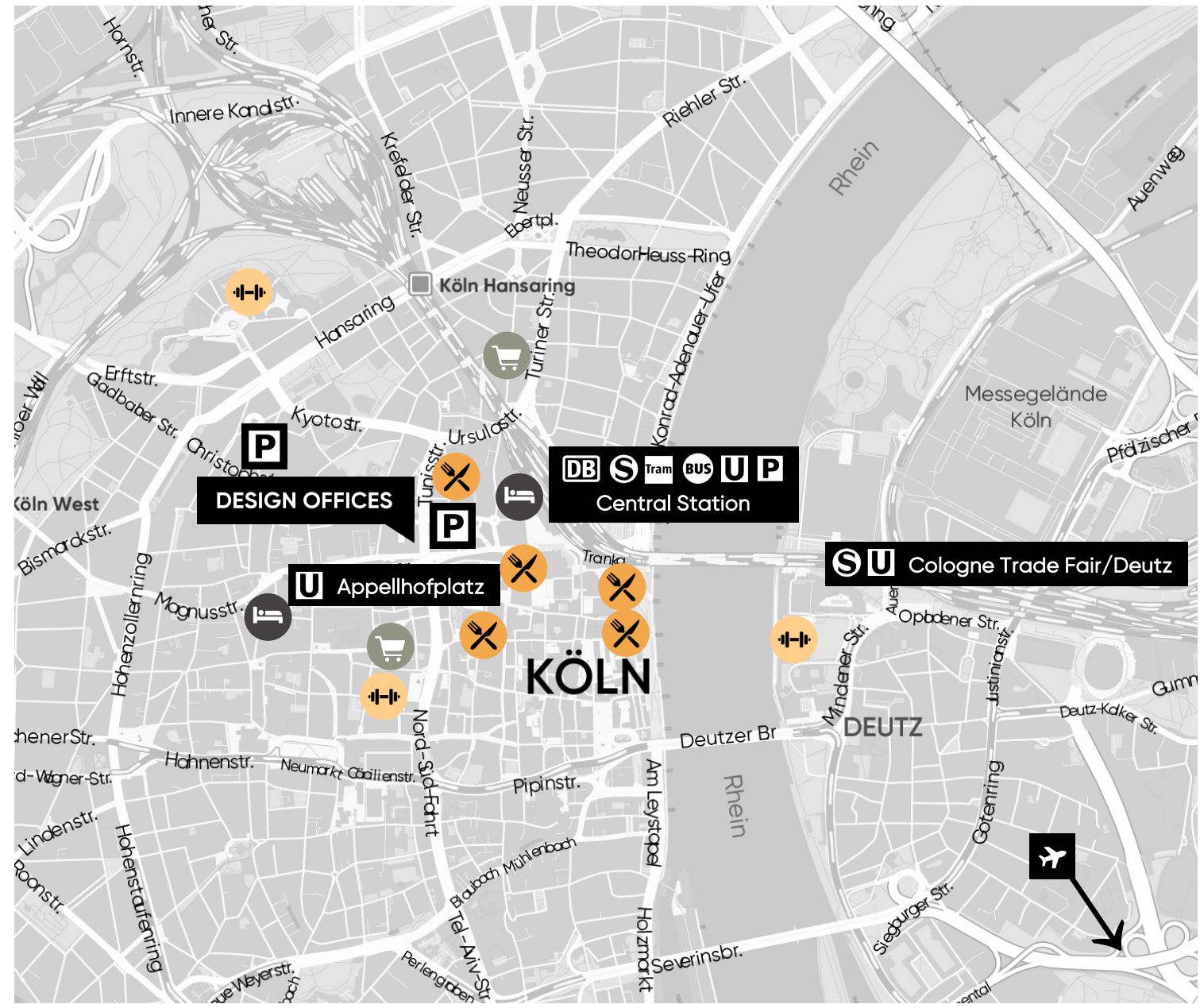


3

# Surroundings

-  Appellhofplatz **280 m**
-  Cologne Central Station **500 m**
-  Cologne/Bonn Airport **19 km**
-  Via the **A57** and **Nord-Süd-Fahrt** (North-South axis)
-  **Customer parking spaces**, Design Offices Cologne Dominion  
**Börsenplatz multi-storey car park**, **Commerzbank**, Komödienstr. 18  
**Multi-storey car park Am Dom**, access via Kurt-Hackenberg-Platz

-  Restaurants
-  Hotels
-  Supermarket
-  Sport




# Floor plans


## Cologne Dominion

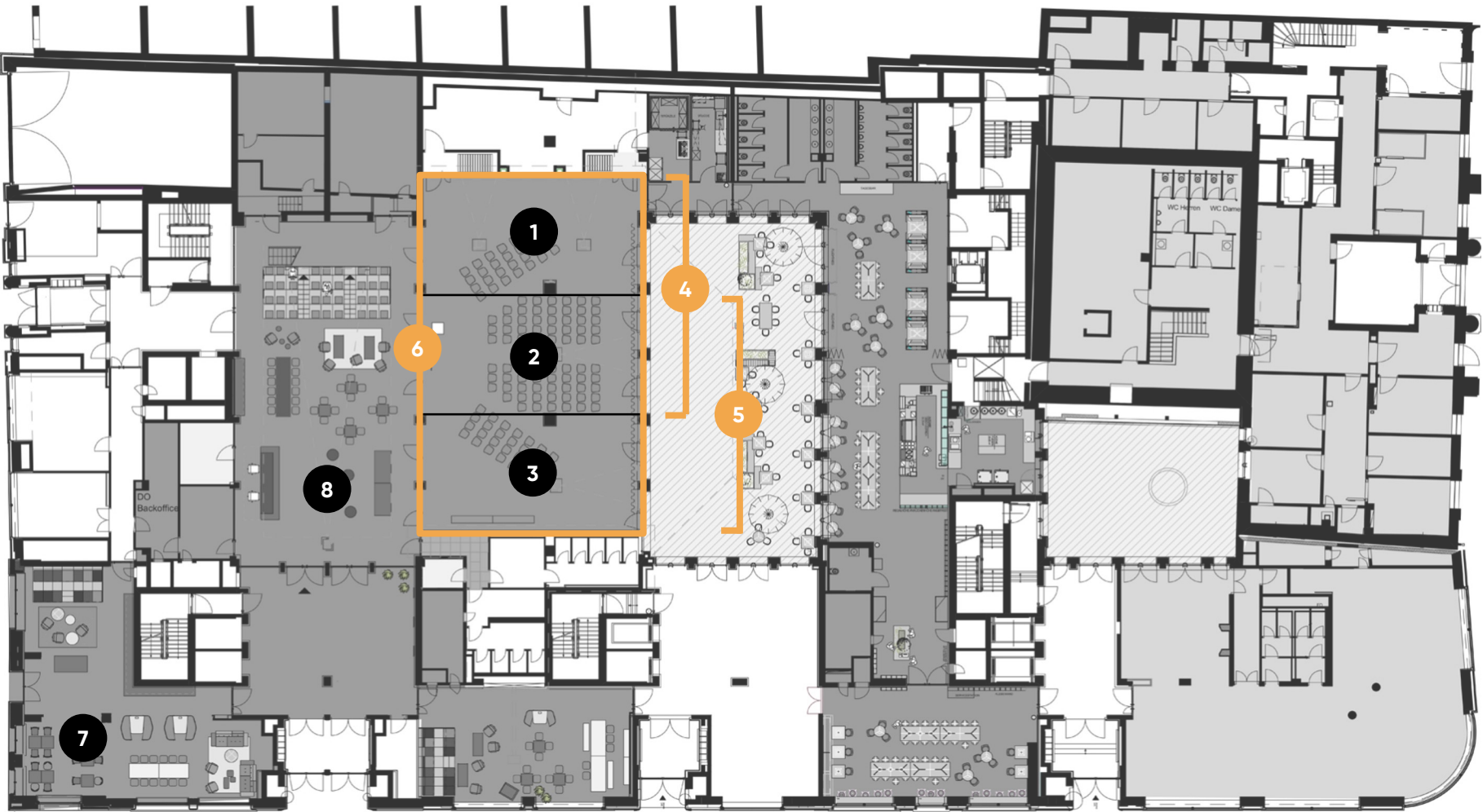


# Ground floor

Meeting & conference spaces

 With flexible walls

-  Training Room I
-  Training Room II
-  Training Room III
-  Training Room I + II
-  Training Room II + III
-  Training Room II, II, III
-  DO.Lounge
-  Reception



# Ground floor

Meeting & conference spaces

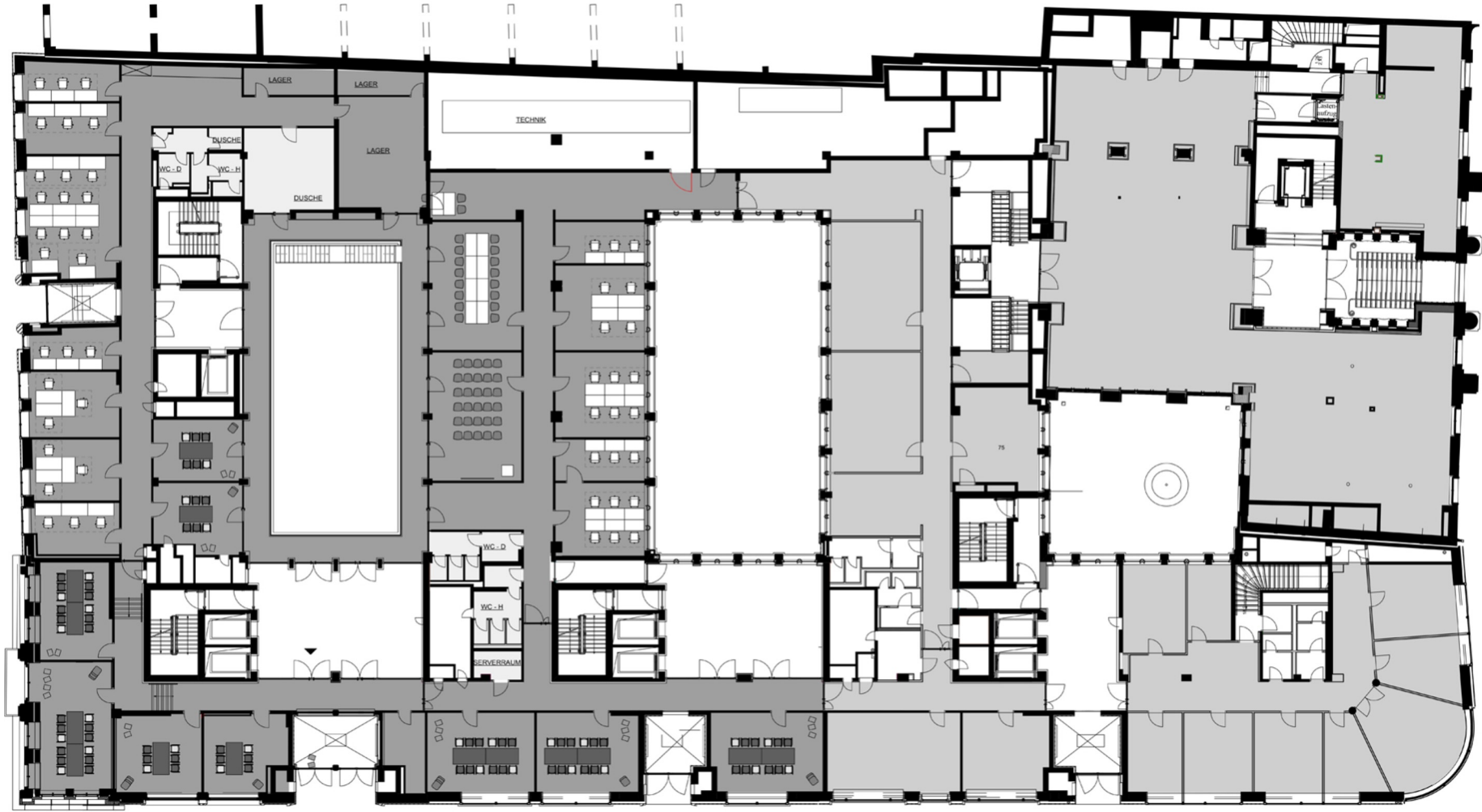


		m <sup>2</sup>	L x W x H in metres	New Work	U-shaped	Parliamentary	Theatre	Block	Circle	Banquet
1	Training Room I	94	7.0 x 13.0 x 3.1	25	24	24	70	20	15	24
2	Training Room II	100	8.0 x 13.0 x 3.1	30	24	24	70	20	17	30
3	Training Room III	91	7.0 x 13.0 x 3.1	25	24	24	70	20	15	24
4	Training Room I + II	194	15.0 x 13.0 x 3.1	80		72	120			54
5	Training Room II + III	191	15.0 x 13.0 x 3.1	80		72	120			54
6	Training Room I, II, III	285	22.0 x 13.0 x 3.1	120		90	199			54
7	DO.Lounge	94	7.0 x 13.0 x 3.1	25	24	24	70	20	15	24
8	Reception	100	8.0 x 13.0 x 3.1	30	24	24	70	20	17	30



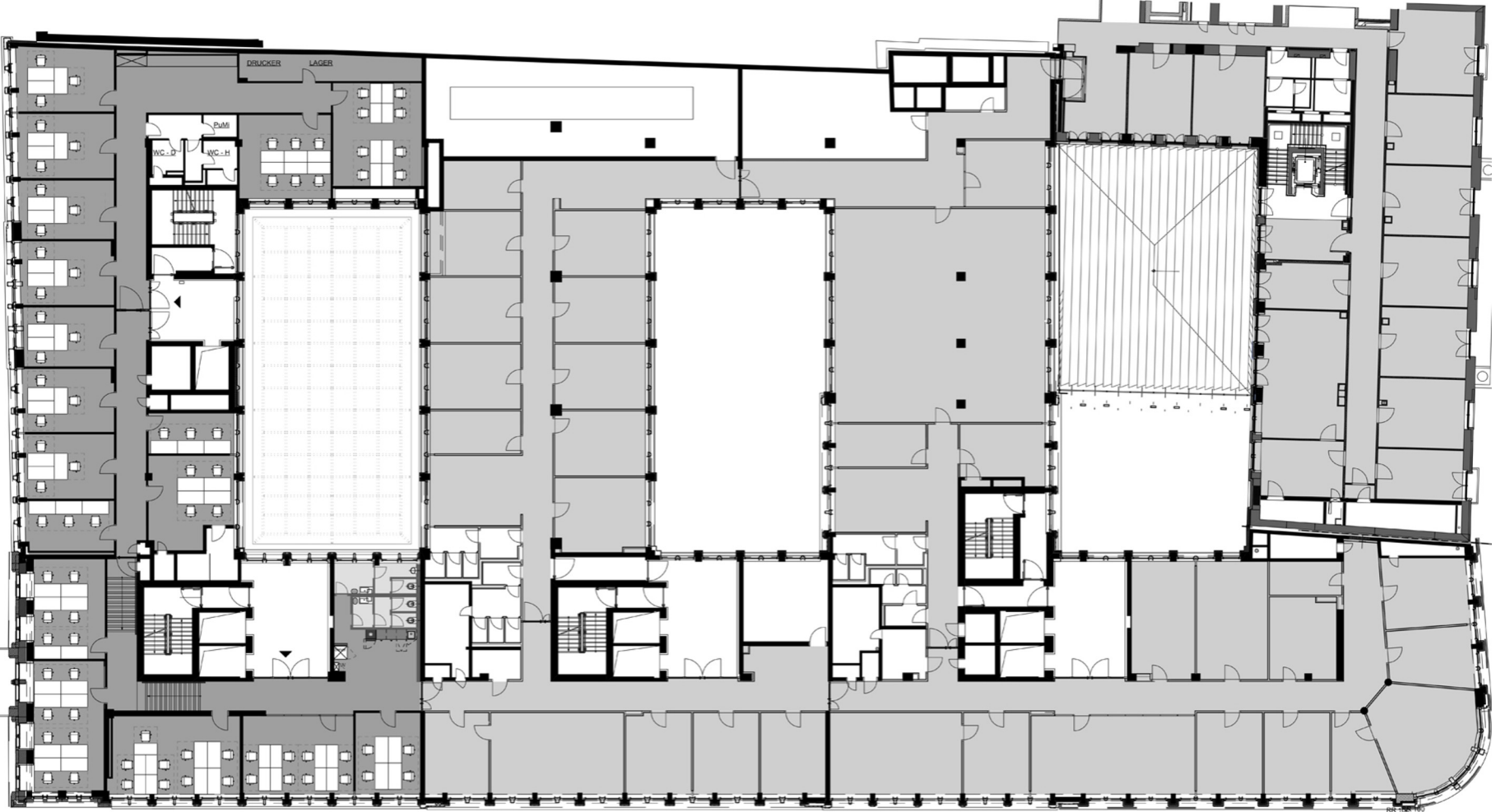
# 1st floor

Fixed offices



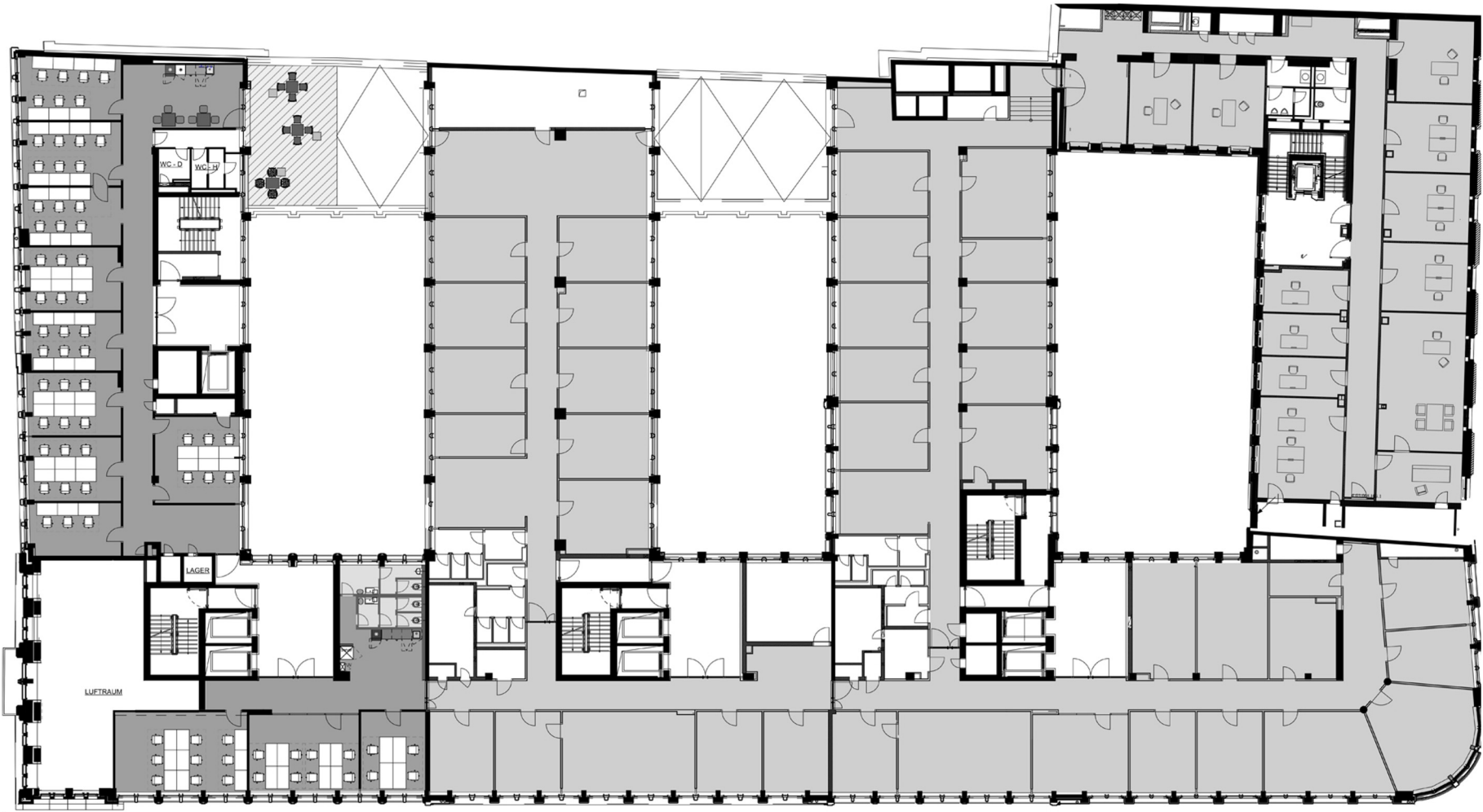
# 2nd floor

Fixed offices



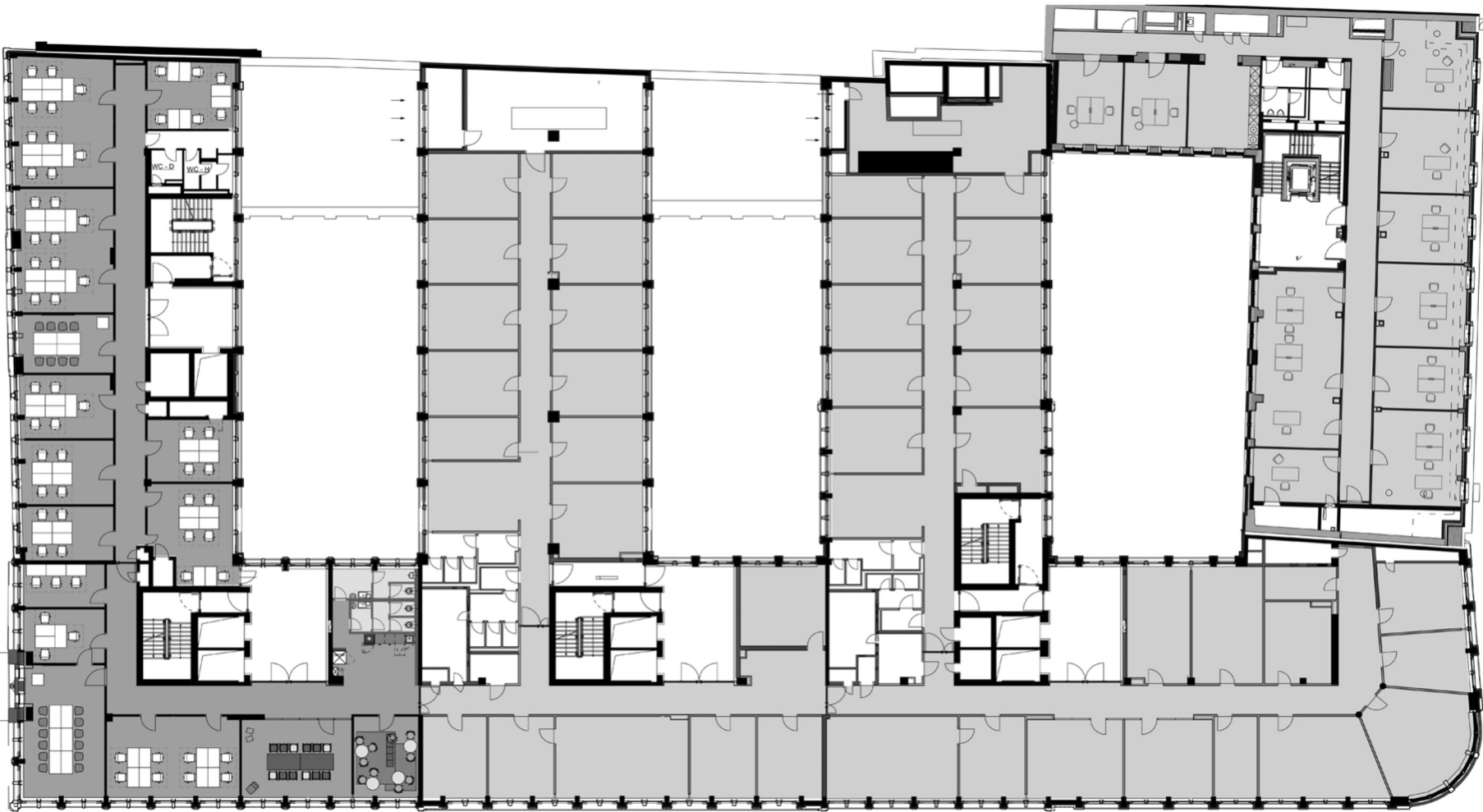
# 3rd floor

Fixed offices



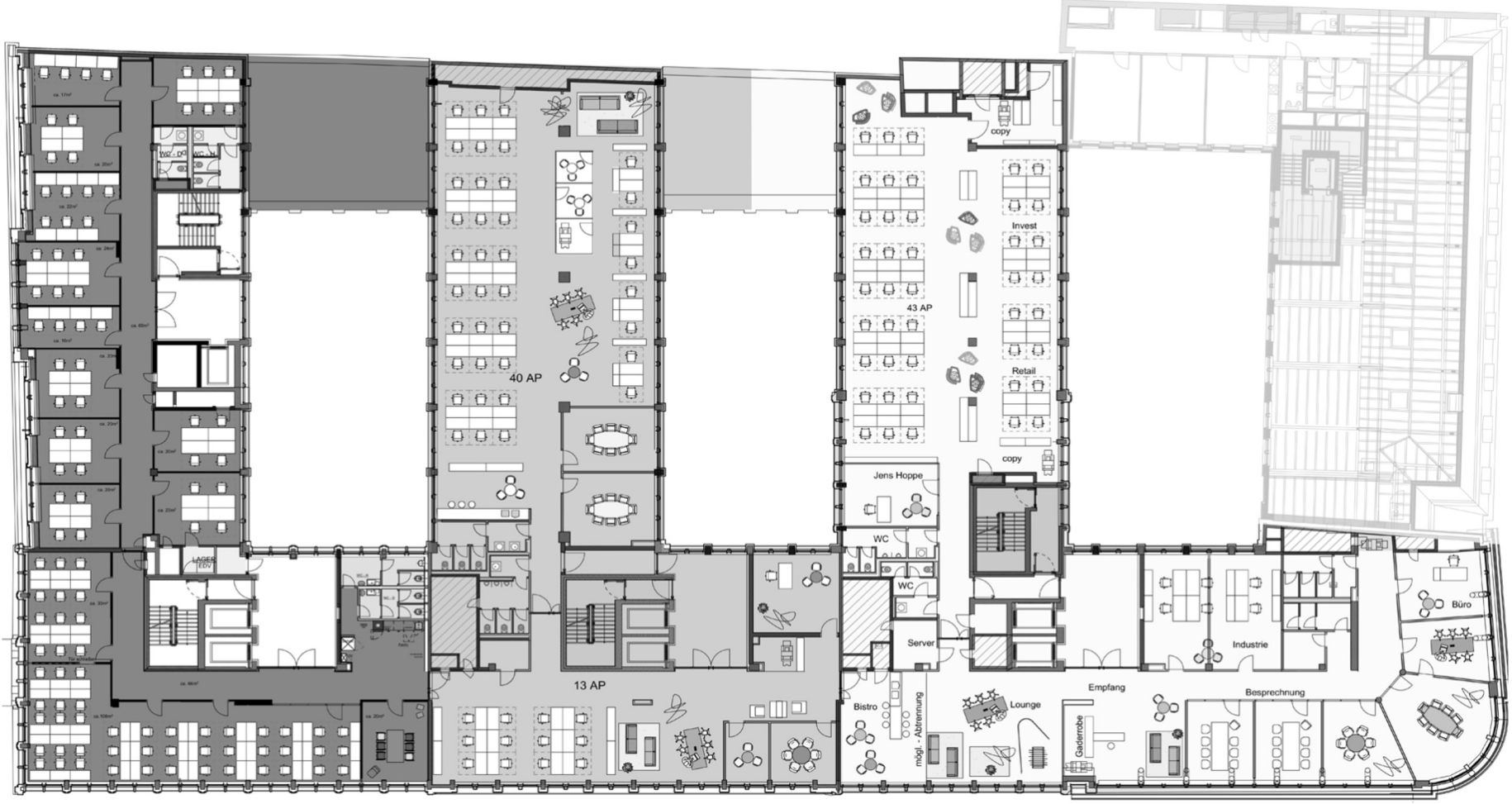
# 4th floor

Fixed offices



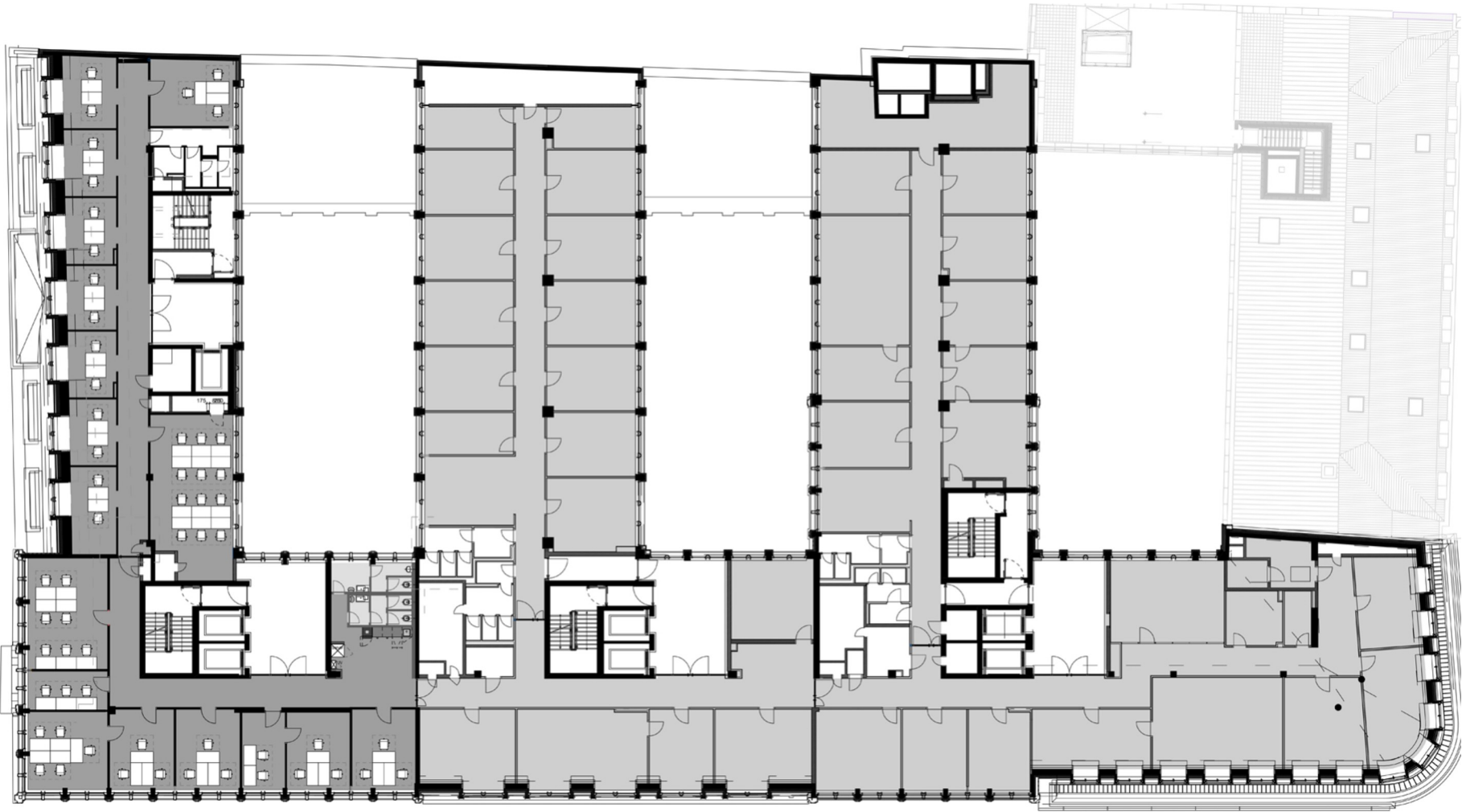
# 5th floor

Fixed offices



# 6th floor

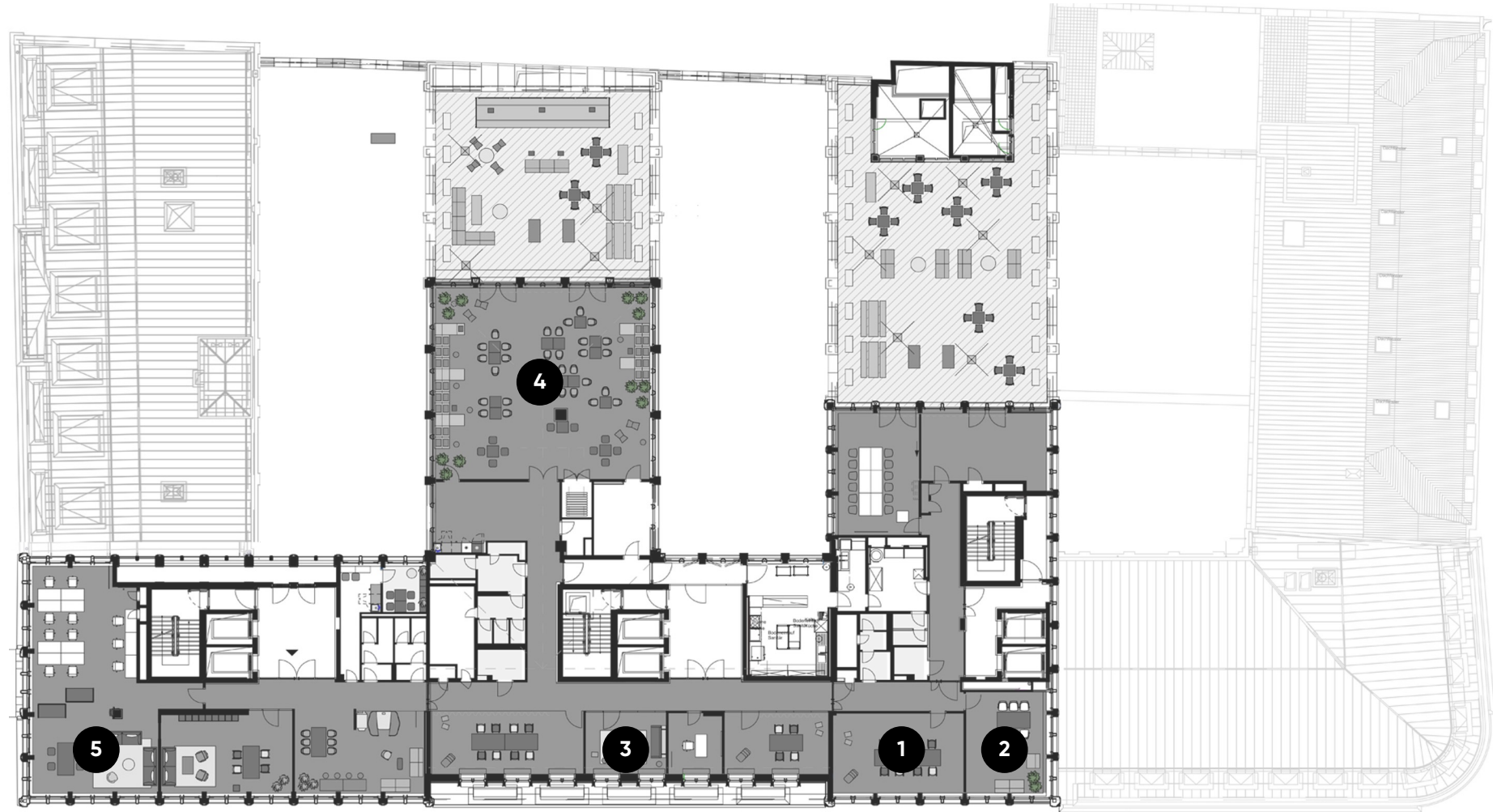
Fixed offices



# 7th floor

Meeting & conference spaces

- 1 Training Room 7.III
- 2 Fireside Room 7.II
- 3 Fireside Room 7.I
- 4 Work Lab 7.I
- 5 Training Room 7.IV



# 7th floor

Meeting & conference spaces

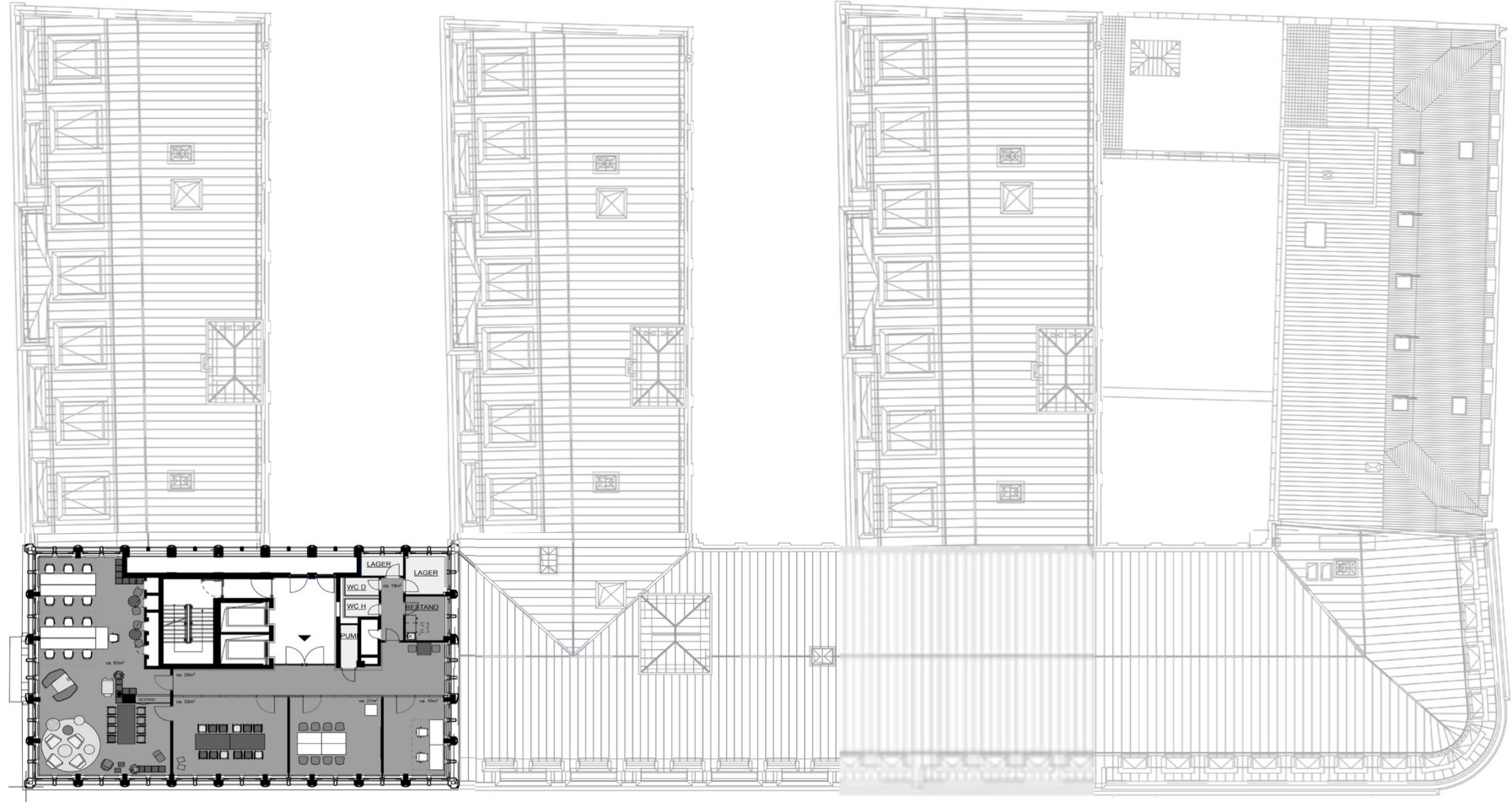


		m <sup>2</sup>	L x W x H in metres	New Work	U-shaped	Parliamentary	Theatre	Block	Circle	Banquet
1	Training Room 7.III	39	7.9 x 4.9 x 2.8	15	12	10	18	10	10	12
2	Fireside Room 7.II	29	6.2 x 4.7 x 2.8					6		
3	Fireside Room 7.I	19	4.9 x 3.8 x 2.45					6		
4	Work Lab 7.I	153	12.9 x 11.8 x 2.85	40	20	25	60	18	25	24
5	Training Room 7.IV	39	8.0 x 5.0 x 2.8					15		



# 8th floor

Fixed offices



# 9th floor

Fixed offices

