

DESIGNS THAT INSPIRE YOU












DISCOVER DESIGNS, "TEYASEER" PRE-DESIGNED

TRADITIONAL MODEL - T15

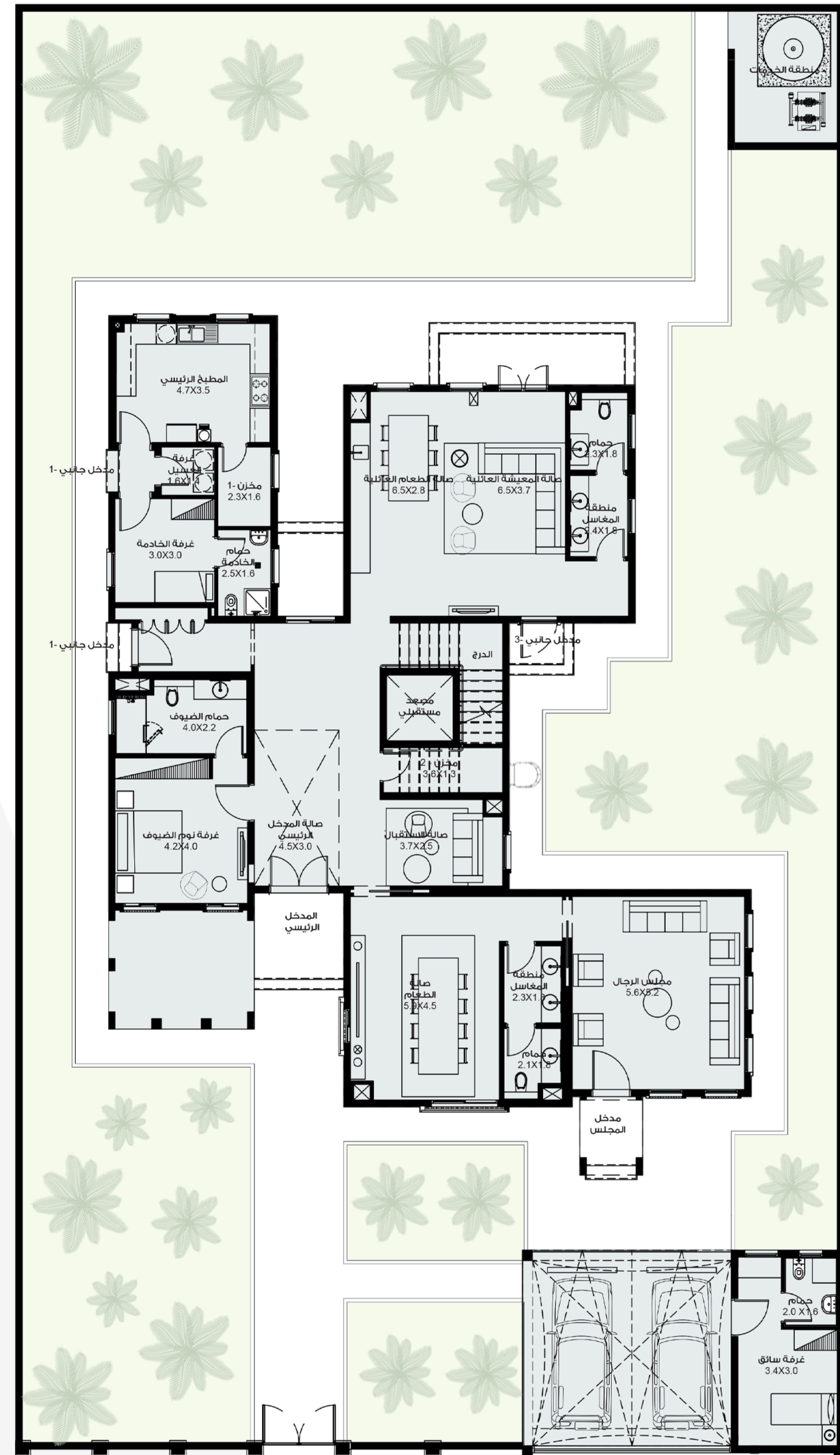
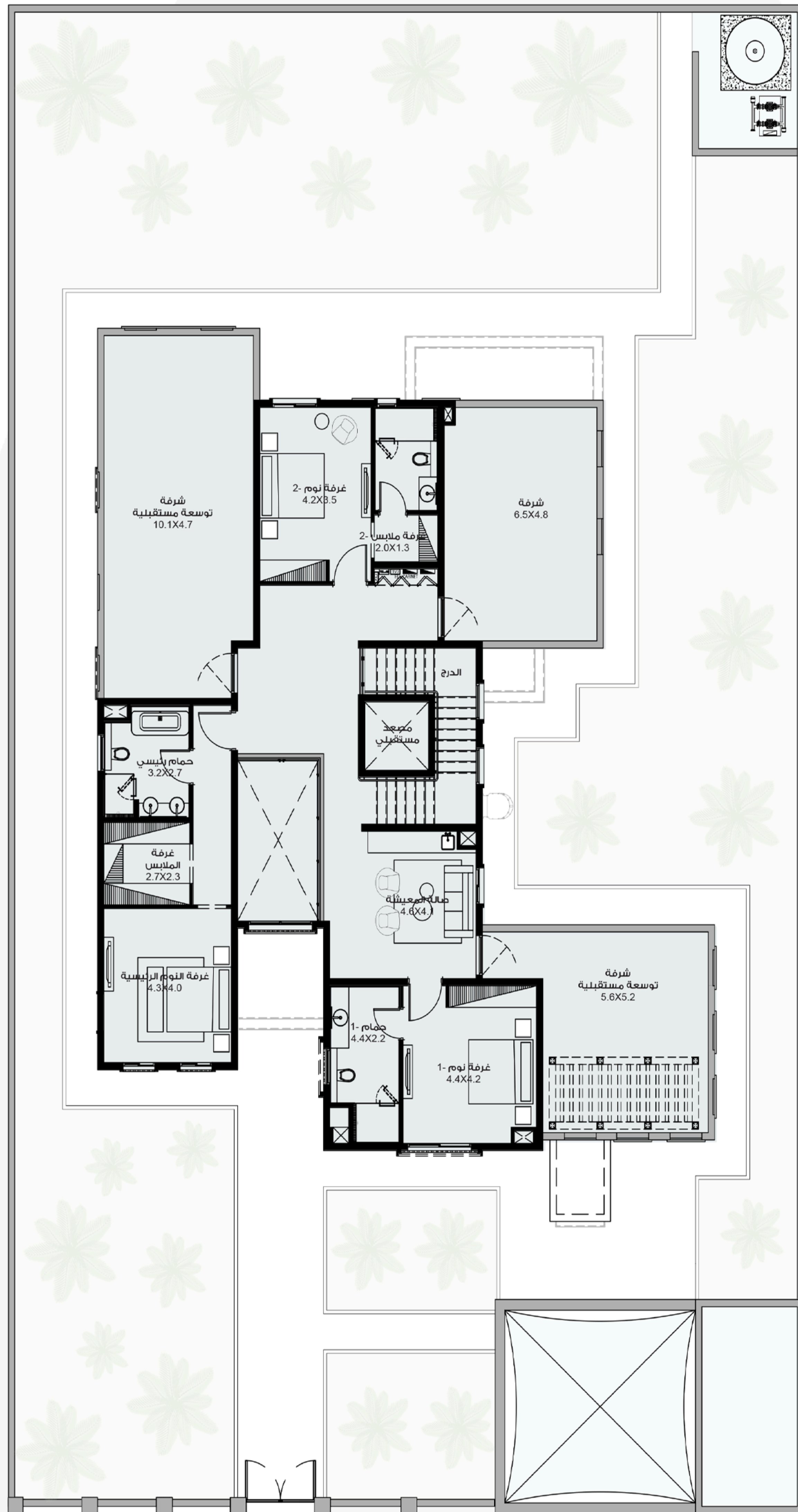


This home features an elegant traditional facade, including four bedrooms, with the possibility of adding two more rooms. This villa offers spacious areas for sitting and relaxation, providing a functional and sunny space to meet all your needs.

↗ Total Area : 503.13 Msq

- | | | | | | |
|---|---|---|---|---|---|
|  |  |  |  |  |  |
| Elevator Space | Dining Room | Parking Spaces | Majlis | Living Room | 4 Bedrooms |
|  |  |  |  |  | |
| Storage Space | Future Expansion of 2 Rooms | Maids Room | Drivers Room | Laundry Room | |

FIRST FLOOR



GROUND FLOOR

3D FLOOR PLAN GROUND FLOOR



3D FLOOR PLAN FIRST FLOOR





تياسير

TEYASEER

TEYASEER.AE

028107700

INFO@TEYASEER.AE

LOCATION



Scan the QR Code to find our location via google maps

