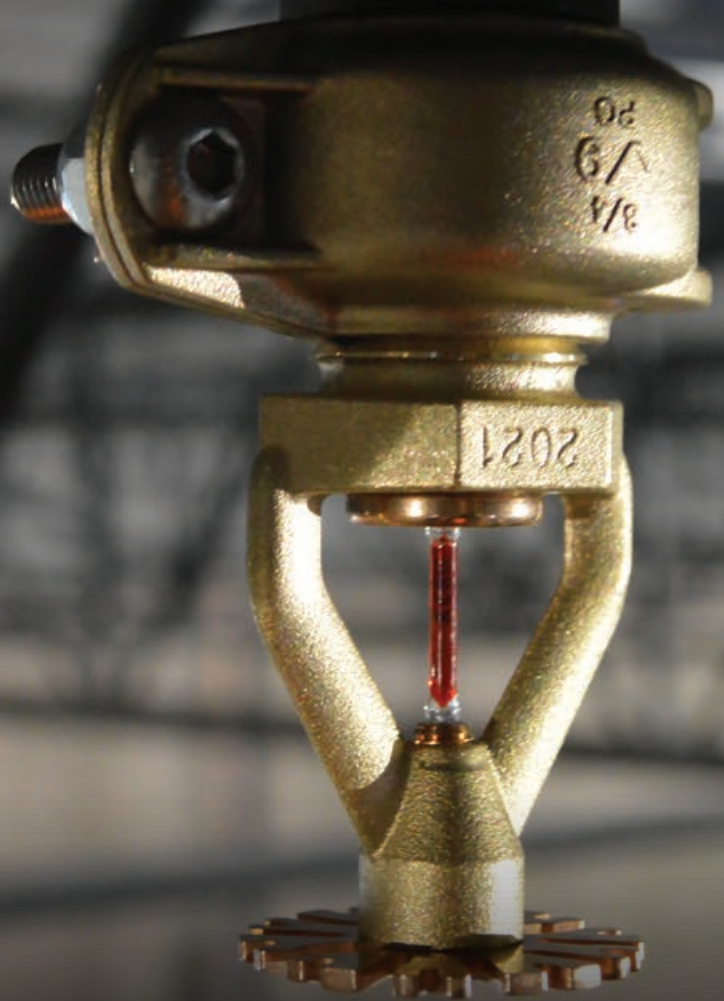


# DEFINING INNOVATION FOR FIRE PROTECTION



COMMITTED TO CHANGING THE GAME SINCE 1919



# DEFINING INNOVATION

## TABLE OF CONTENTS

- 2 FireLock™ IGS™
- 4 RG2100 Roll Grooving Tool
- 6 FireLock™ Installation-Ready™ Couplings
- 8 FireLock™ Installation-Ready™ Fittings
- 10 VicFlex™ Captured Coupling Technology
- 12 VicFlex™ Bracket Solutions
- 14 VicFlex™ Style VS1 Dry Sprinkler
- 16 VicFlex™ Style AB6 Bracket for Cold Storage
- 18 FireLock™ IGS™ Installation-Ready™ Sprinklers
- 20 FireLock NXT™ Automatic Valve Systems
- 22 Hydraulic Control Solutions
- 24 FireLock™ Fire-Pac Valve Cabinets
- 26 Victaulic Vortex™ Hybrid Fire Extinguishing System
- 28 Victaulic® System Solution for HDPE Pipe
- 30 Industrial Solutions
- 32 Victaulic Toolbar for Revit®
- 34 Defining Innovation Since 1919



# *since* 1919

Since the first patent in 1919, Victaulic has delivered innovative pipe joining solutions that help customers succeed worldwide. Look inside many of the world's most recognizable landmarks and industrial facilities, and you'll find Victaulic solutions at work making bold design innovations possible, speeding time to completion, allowing for unpredictable seismic movements and setting the stage for scalability.

As the world's leading producer of grooved mechanical pipe joining systems, Victaulic continues to deliver ground breaking solutions for the fire protection industry.



# THE BIG IDEA THAT IS CHANGING 1" SMALL DIAMETER





# INNOVATIVE GROOVE SYSTEM IGS™

## SIMPLIFY:

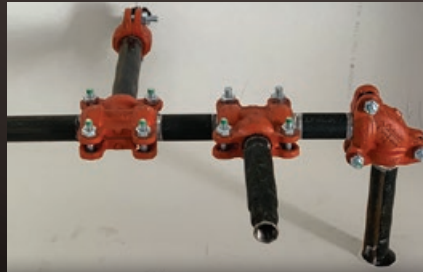
- Eliminate mess – no oil, shavings, tape, or dope
- Increase tool portability
- Use one pipe schedule (Schedule 10)

## SAVE:

- Effort – eliminate pipe wrenches
- Up to 55% less pipe prep
- Up to 2× faster to install

## CONFIRM:

- Replace threaded connections with mechanical joints
- Bolt pad to bolt pad visual confirmation
- No tool adjustment – groove within specification every time



Threading	versus	IGS™ Solutions
✗	No Oil, Shavings, Tape and Dope	✓
✗	For use with Sch. 40 – Sch. 10 pipe	✓
✗	Impact guns and no elbow injuries	✓
✗	Increased corrosion resistance	✓
✗	Minimize the potential for leaks	✓
✗	One-touch tool actuation	✓
✗	Visual Inspection – Improved system durability	✓
✗	Installs in minutes	✓

firelockIGS.com



# GROOVING INNOVATIONS

## RG2100 Roll Grooving Tool



**IGS**™

- Cold forms the unique Victaulic® IGS™ groove profile
- Hands-free process allows grooving operation to be completed in under four seconds
- Eliminates adjustment and need to measure the groove





seconds  
per pipe end

IGS™ ROLL GROOVING



seconds  
per pipe end

THREADING

2x faster

# FIRELOCK™ INSTALLATION-READY™ COUPLINGS



**STYLE 009N**

FireLock™ Two-Bolt  
Installation-Ready™  
Rigid Coupling

1¼ – 12" | DN32 – DN300



**STYLE 109**

FireLock™ One-Bolt  
Installation-Ready™  
Rigid Coupling

1¼ – 2½" | DN32 – 73.0 mm



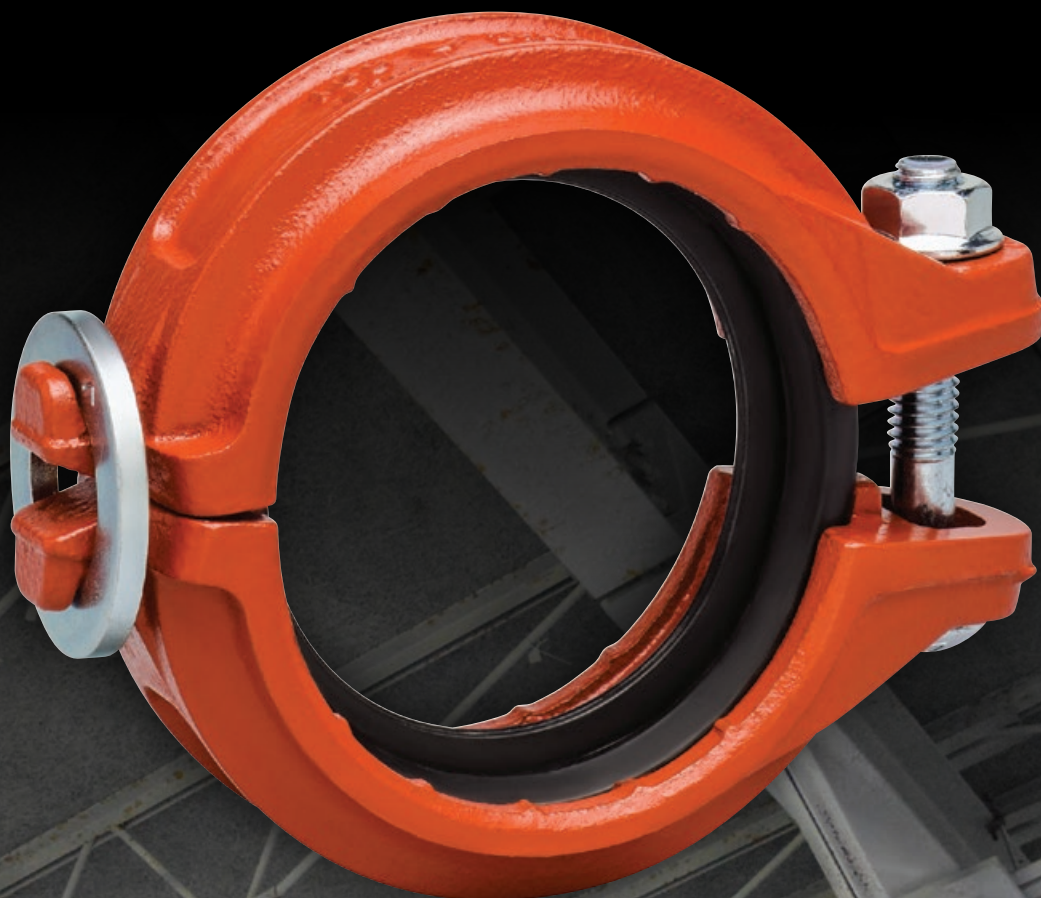
**STYLE 108**

FireLock™ IGS™  
Installation-Ready™  
Coupling

1" | DN25

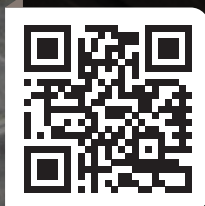
Installation-Ready™ from  
1 – 12" | DN25 – DN300





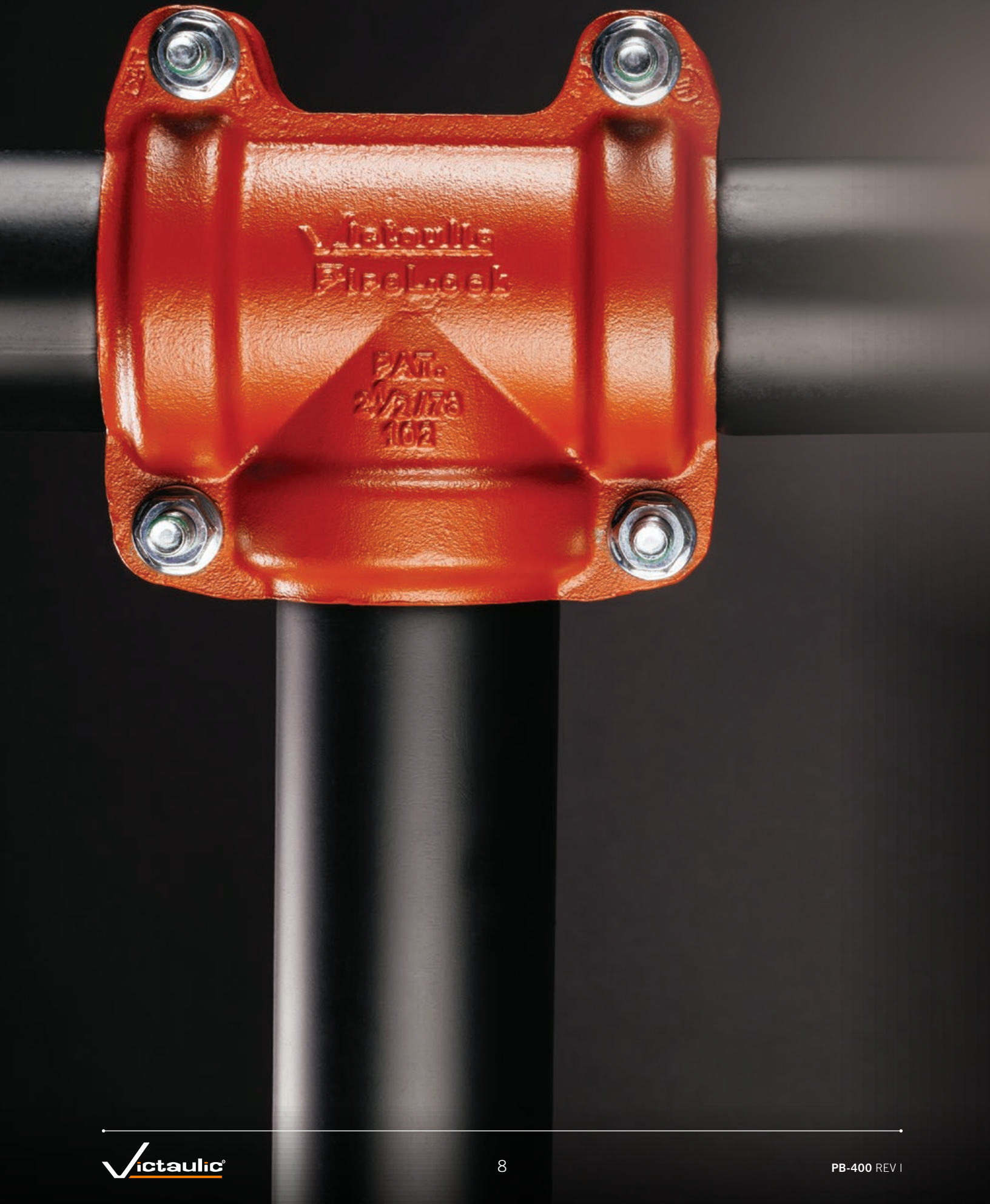
Style 109 FireLock™  
**ONE-BOLT**  
Installation-Ready™ Coupling

- Added confidence of single pad to pad visual confirmation
- Still no torque requirement
- Up to 6 times faster to install than traditional couplings
- Easy fit-up overhead with a two-piece housing
- One-bolt design eliminates alternating during tightening



[victaulic.com/style109](https://victaulic.com/style109)







# FIRELOCK™ INSTALLATION-READY™ FITTINGS

THE MOST INNOVATIVE CHANGE TO  
FIRE PROTECTION FITTINGS SINCE VICTAULIC  
ORIGINATED THE GROOVED CONCEPT.

[firelockfittings.com](http://firelockfittings.com)

15 →  
ready-to-install  
fittings



260 →  
loose parts



## NO LOOSE PARTS

- Eliminate the time needed to look for an extra coupling or bolt
- Reduce the number of times up and down the ladder or lift



## SPRINKLER FITTING SYSTEMS

# CONFIDENCE. SPEED. PERFORMANCE.



### STYLE AH2-CC HOSE

- Innovative grooved branch line connection using a captured Style 108 coupling instead of a threaded union
- Bolt pad to bolt pad visual confirmation
- Same great performance as the Style AH2 hose



### STYLE AH2 HOSE

- 2" bend radius — tightest in the industry
- Most allowable bends in the industry
- Up to 50% less friction loss than corrugated systems



FLEXIBLE FITTINGS

SUSPENDED CEILING

HARD-LID CEILING

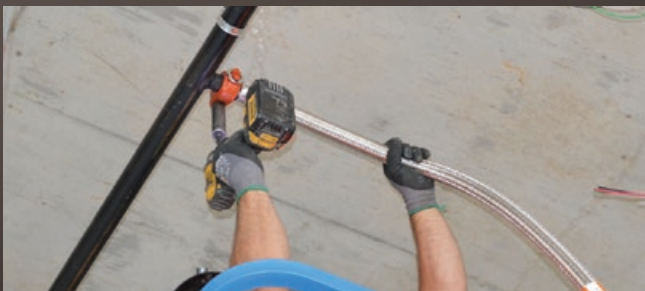
SPECIALTY APPLICATIONS

PRE-ASSEMBLED SYSTEMS



VicFlex™ is the clear choice  
for fast, dependable  
sprinkler installation.

[vicflex.com](http://vicflex.com)





SPRINKLER FITTING SYSTEMS



# FLEX TO FIT YOUR NEEDS

Brackets for every solution from standard to specialized



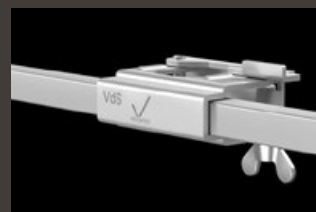
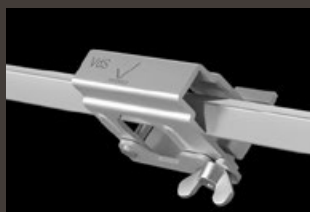
FLEXIBLE FITTINGS

SUSPENDED CEILINGS

HARD-LID CEILINGS

SPECIALTY APPLICATIONS

PRE-ASSEMBLED SYSTEMS



## STYLE AB2 WITH PATENTED, VERTICALLY-ADJUSTABLE OVER/UNDER CENTER BRACKET

- Allows installation and vertical adjustment from above or below the ceiling surface, without added steps of cutting into hard-lid material or creating an access point
- Eliminates the need to disassemble the bracket before installation
- Maintains reducer position while tightened
- Pad-to-pad visual confirmation for installation confidence



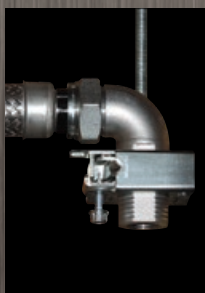
Scan code to learn more about VicFlex solutions on the VicFlex App

## LOW PROFILE SOLUTIONS



### STYLE AB11 BRACKET

- Installs in spaces with clearances down to 6" | 150 mm total takeout



### STYLE AB12 BRACKET

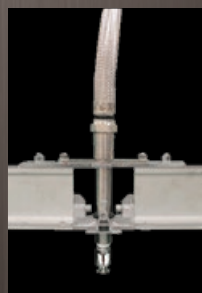
- Designed to work from 36" | 914 mm down to 4" | 100 mm clearance from face of ceiling

## SPECIALTY APPLICATIONS



### SERIES AQD

- FRP or Metal Duct Applications



### SERIES AQC-U

- Clean Room Applications



SPRINKLER FITTING SYSTEMS

# VICFLEX™ STYLE VS1 DRY SPRINKLER

[vicflex.com](http://vicflex.com)



FLEXIBLE FITTINGS

SUSPENDED CEILING

HARD-LID CEILING

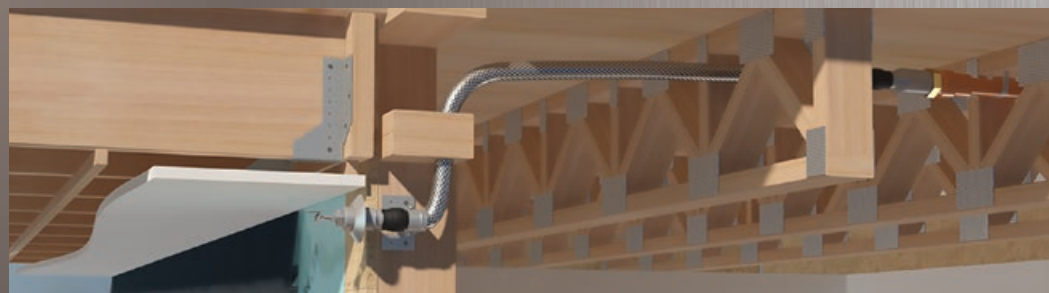
SPECIALTY APPLICATIONS

PRE-ASSEMBLED SYSTEMS

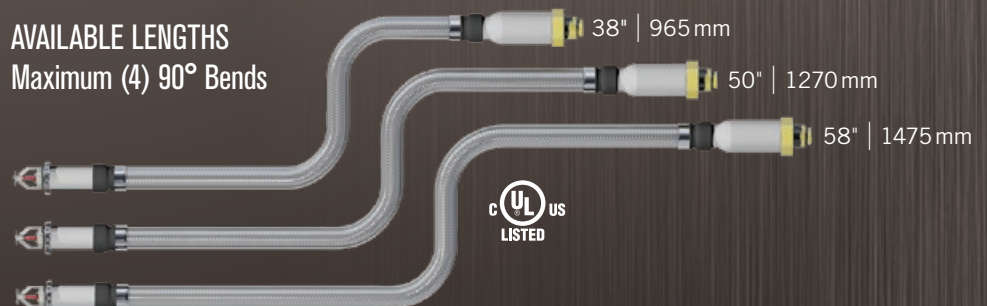


## When flexible fitting technology meets dry sprinkler technology, the result is simpler, safer sprinkler systems from Victaulic.

- Applicable wherever dry sprinklers are currently installed such as — multi-family residential, balconies and breezeways, data centers, parking garages, assisted living facilities
- Meets NFPA 13 Installation Requirements for Dry Sprinklers
- 2" cULus bend radius



AVAILABLE LENGTHS  
Maximum (4) 90° Bends





## SPRINKLER FITTING SYSTEMS

# WORK SMARTER, NOT HARDER.



Sleeve and  
Skirt Pendent



Recessed  
Pendent



Flush  
Pendent

### SUPERIOR COLD STORAGE PROTECTION

Victaulic offers an off-the-truck solution for cold storage applications that removes the guesswork of using hard pipe while also improving seal integrity. Whether it is a new project or a retrofit, using the VicFlex™ Style AB6 Bracket makes installation a one-person job and reduces the risk of condensation impeding the system.



FLEXIBLE FITTINGS

SUSPENDED CEILINGS

HARD-LID CEILINGS

SPECIALTY APPLICATIONS

PRE-ASSEMBLED SYSTEMS

# VICFLEX™ STYLE AB6 BRACKET FOR COLD STORAGE

[vicflex.com](http://vicflex.com)

## BENEFITS

- Simple, One-Person Installation. **Easy Indication of Vertical and Frame Arm Alignment from Above.**
- Eliminate Guesswork. **No Measuring or Multiple Trips to the Cooler.**
- Combats Differential Movement. **Industry Leading Seal Integrity Stays Intact, Protecting Against Condensation.**
- Flexible, Adjustable, and Adaptable. **Fits Any Ceiling or Wall Thickness While Sealing to a Variety of Surfaces.**

# INSTALLATION-READY<sup>™</sup> SPRINKLERS

FOR STORAGE FACILITIES AND EXPOSED APPLICATIONS

“REALISTICALLY YOU DON’T HAVE TO PREP  
ANYMORE, IT COMES IN A BOX AND YOU  
JUST START INSTALLING IT ON THE PIPE”

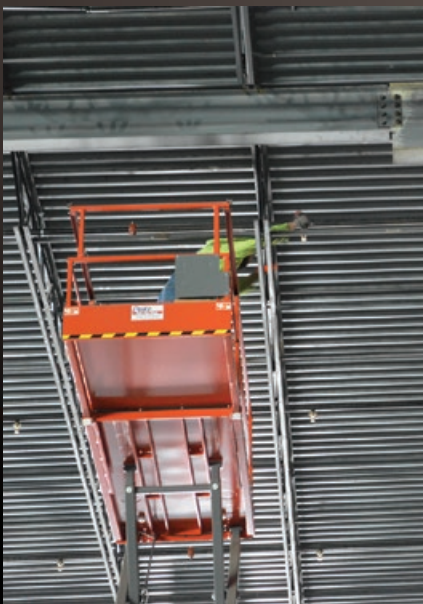
Purchasing Agent



- Zero sprinkler prep  
eliminate tape and dope
- Eliminate sprinkler wrenches  
reducing injury from repeated  
strenuous motion
- Visual inspection of proper  
installation no additional  
torque for frame alignment
- Standardize on 1" FireLock<sup>™</sup>  
IGS<sup>™</sup> outlets coupling transitions  
to 1", ¾", and ½" sprinklers

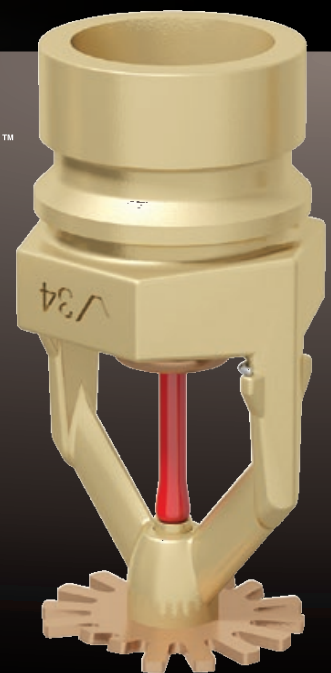


## Style V9 Sprinkler Coupling



### IT'S EASY – STAY IN THE AIR, STAY PRODUCTIVE.

Victaulic now offers solutions that eliminate prep work on the ground and keep installers in the air. But initial installation isn't the only thing that determines productivity, it's the rework required as well. Utilizing mechanical connections where possible instead of threaded connections ensures less downtime from leaks.



# FIRELOCK NXT<sup>TM</sup> AUTOMATIC VALVE SYSTEMS



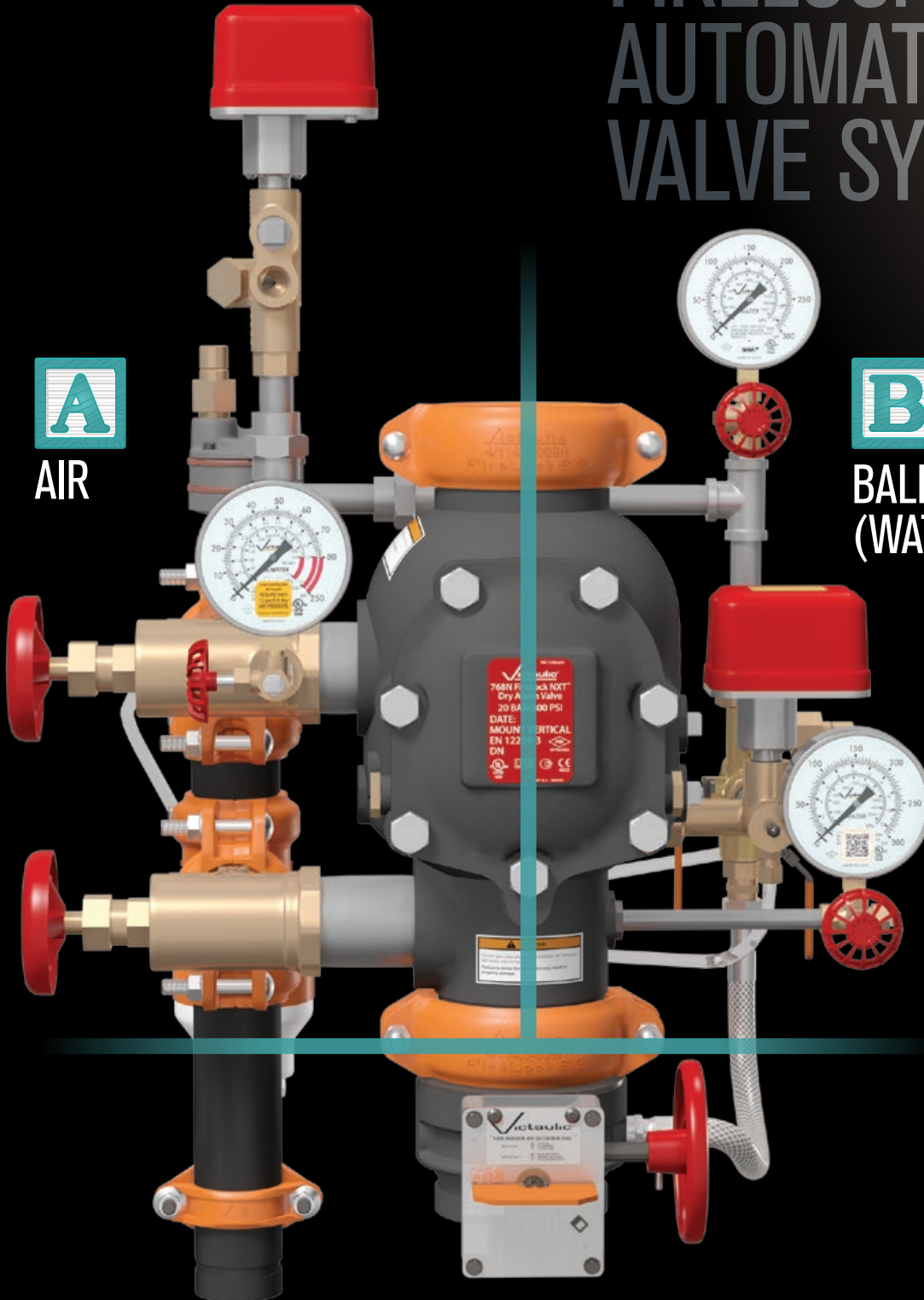
AIR



BALL VALVE  
(WATER)



CONTROL VALVE



Series 768N

- Dry Valve



# STREAMLINED SET-UP. AS EASY AS

LEFT EQUALS AIR.  
RIGHT EQUALS WATER.  
NO CONFUSION.



## Simplified Maintenance

### REFERENCE MATERIAL AT YOUR FINGERTIPS

First of its kind in the industry, instantaneously access up-to-date instructions directly from your mobile device. A quick scan is between you and installation, set-up and maintenance videos, or a call to Victaulic Customer Service.



### EVERYTHING DESIGNED WITH YOU IN MIND

Reorganized installation instructions are clear and direct. Never mix-up a strainer again, specifically designed threads only fit in their specific manifold.

### READILY ACCESSIBLE TRIM

All trim components are located on either side of the valve, and labeled clearly. No more reaching, or guesswork.



#### Series 769N

- Deluge Electric
- Deluge Dry Pilot
- Deluge Wet Pilot



#### Series 769N

- Preaction Electric
- Preaction Single Interlock Pneumatic
- Preaction Non-Interlock Pneumatic
- Preaction Double Interlock Pneumatic/Electric
- Preaction Double Interlock Pneumatic

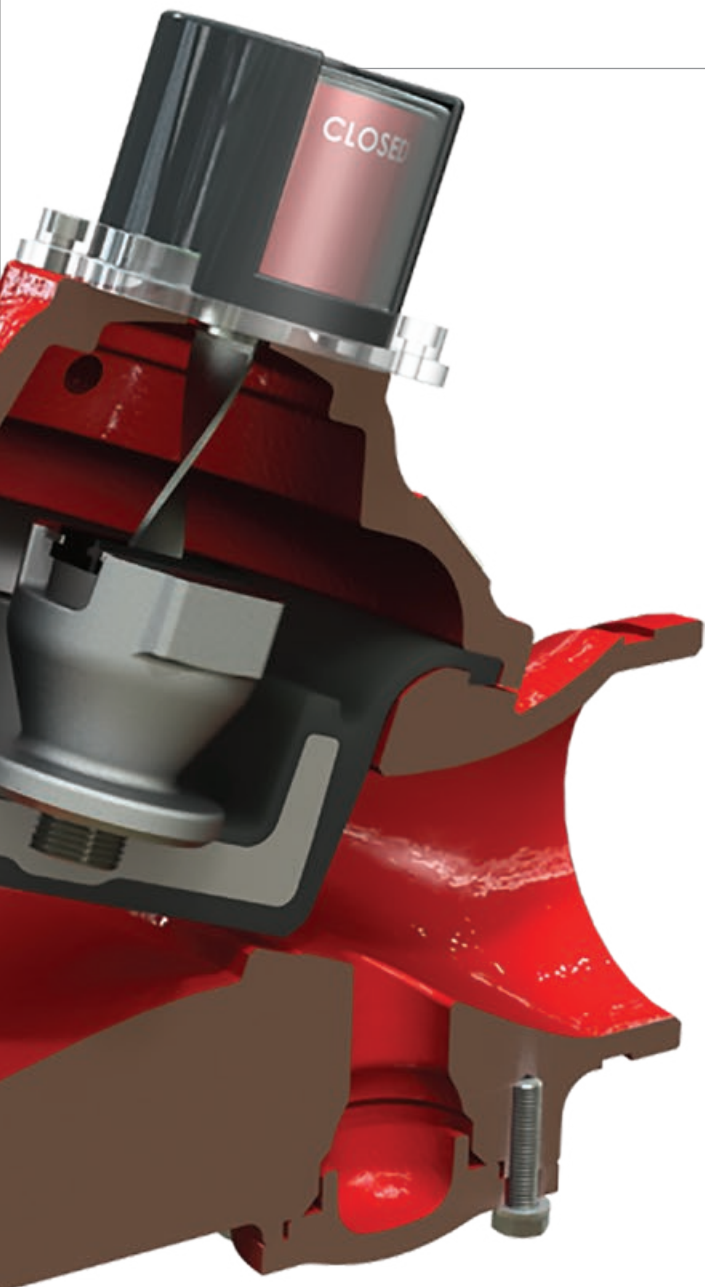
Through our exclusive partnership with BERMAD, Victaulic now offers innovative solutions for the control and management of fire protection systems specifically as it relates to water supply and pressure control.

Designing fire protection systems for high-rise and high-demand buildings presents a unique set of challenges, all of which can be addressed by leveraging BERMAD's product and technical expertise along with Victaulic's extensive system knowledge and support.



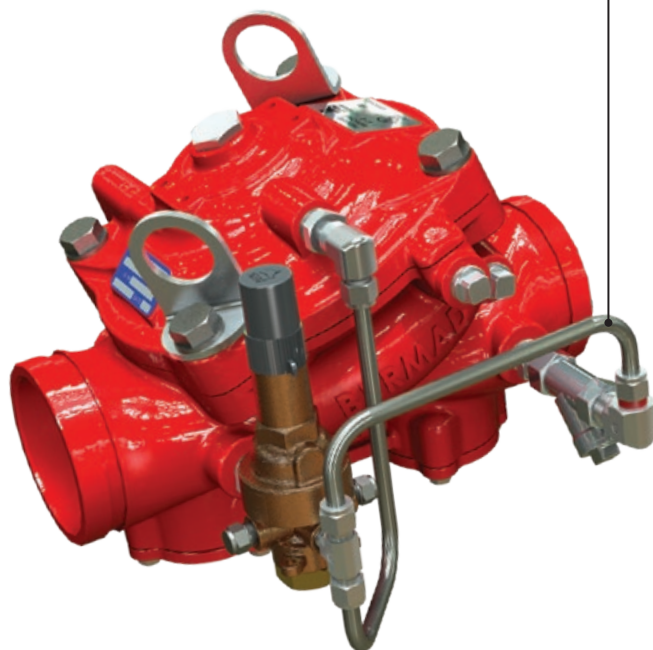
# HYDRAULIC CONTROL SOLUTIONS





### Adaptable Trim

Consistent valve body with multiple functions based on different trim configurations



## VICTAULIC® SERIES 800Y HYDRAULIC CONTROL VALVE FAMILY

Regardless of application, dependable operation and ease of service are important to your bottom line. Hydraulic control valves with improved flow capacity, decreased water hammer and simplified maintenance can increase operating life and reduce total cost of ownership for the fire protection system. Victaulic's advanced valve design does exactly that.

- Obstruction-free design increases flow capacity by up to 40% ( $C_v$  = up to 3,801)
- No water hammer at closing — smooth, cushioned operation improves operating life and eliminates noise
- Highest cULus Listed and FM Approved pressure rating for pressure reducing and pressure relief applications — 365 psi | 2517 kPa | 25 bar
- Up to eight times faster, simplified maintenance due to rolling elastomeric diaphragm design and 4-bolt cover removal
- Industry-first and industry-leading flow stability without an anti-cavitation accessory required





# MAXIMIZE BILLABLE SPACE



The **Series 745 Fire-Pac** is the ideal option for installation of Victaulic® FireLock NXT™ dry, deluge or preaction systems — especially when systems are:

- Located in high traffic areas
- Installed in series and share common supply and drain lines
- Designed in zoned control areas

# HYBRID FIRE EXTINGUISHING SYSTEM

Victaulic Vortex™ hybrid technology, utilizing both water and nitrogen, extinguishes via heat absorption and oxygen deprivation.

[victaulicvortex.com](http://victaulicvortex.com)



Victaulic Vortex 500 (optional cabinet shown)



Victaulic Vortex 1000 < 1500 and 2000 system components shown





#### VICTAULIC VORTEX™

- Water droplets are approximately 10 microns in size, with a heat-absorbing surface area 90 times greater than traditional sprinklers
- 100% green and sustainable
- Applicable for Class A, B and energized electronics fires such as data centers, turbine enclosures, “precious documents”, wet benches

# Victaulic Vortex™

---

## Hybrid Fire Extinguishing System

# SYSTEM SOLUTION FOR HDPE PIPE

THE FASTEST WAY TO JOIN HDPE PIPE –  
NO IFS, ANDS, OR BUTTS. 

[victaulic.com/hdpesolutions](http://victaulic.com/hdpesolutions)



# DESIGNED TO BE BURIED





#### INSTALLS UP TO 10× FASTER

Join HDPE pipe in half the time it takes to fuse a joint. Forget the fusion equipment. Gone are the days of waiting for plastic to heat up just to cool down. Installing in tight or vertical spaces has never been easier; Victaulic's system solution for HDPE pipe goes where no fusion machine has gone before. That's time savings you've never seen before.



#### INSTALLATION IS WEATHER INDEPENDENT

Whether it's rain, shine, or just downright frigid and fierce, Victaulic® products for HDPE pipe can be installed. No need to check the weather forecast and worry about protection for fusion equipment or project delays any longer.



#### MEETS OR EXCEEDS PRESSURE RATINGS OF HDPE PIPE

If you thought your fused joint was tough, check out *Victaulic* HDPE product performance. Small diameter solutions call for dual rows of razor-sharp teeth that sink into the O.D. of HDPE pipe, forming a sealed hold that never lets go. Bringing out the big guns? Large diameter solutions enlist a rugged double groove to seal the deal. Push it, pull it, and drag it to the max; treat it the same way you would treat fused pipe.



#### INSTALLS WITH SIMPLE TOOLS

No need to set up your fancy fusion machine because all you will need with Victaulic's system solution for HDPE pipe is a simple socket wrench. If you want to get crazy, a cordless impact driver will do the job, too! Don't worry about training certificates or learning how to use fusion equipment, just stick with the basics.



# INDUSTRIAL SOLUTIONS

## CORROSION RESISTANT COATINGS



### VC-250

Developed by Victaulic, the VC-250 is a proprietary UL/FM Approved, nickel based, multilayer corrosion resistant coating that fully encompasses each component of the sprinkler.

### COATINGS

Victaulic provides a range of corrosion resistant solutions for life safety systems. Pictured here is a Style 009N coupling featuring Installation-Ready™ technology with an optional galvanized coating and stainless steel fasteners.





### ENDSEAL™ COUPLING

For use on tank farms, fuel storage, and chemical facilities, the Gasket T607 used with the Victaulic *EndSeal* coupling has been tested and approved to the API607 standard.

The American Petroleum Institute Standard 607 provides test conditions used to evaluate materials exposed to the stringent conditions set forth by fire protection authorities in the protection of petroleum processing facilities.



## DESIGNED FOR DURABILITY

### FIRELOCK™ FIRE-PAC VALVE CABINETS

With more options available than ever before each Fire-Pac System is completely unique.

- Weatherproofing to NEMA 4 standards
- Pipe feed and drain can be located on the left, right or bottom panels
- Insulation and heating components available down to a minimum ambient temperature of 20°F | -6°C
- Compressor and nitrogen fill kit options
- Panel design options now including an addressable panel capable of networking with other intelligent devices





# VDC

# VIRTUAL & DESIGN & CONSTRUCTION



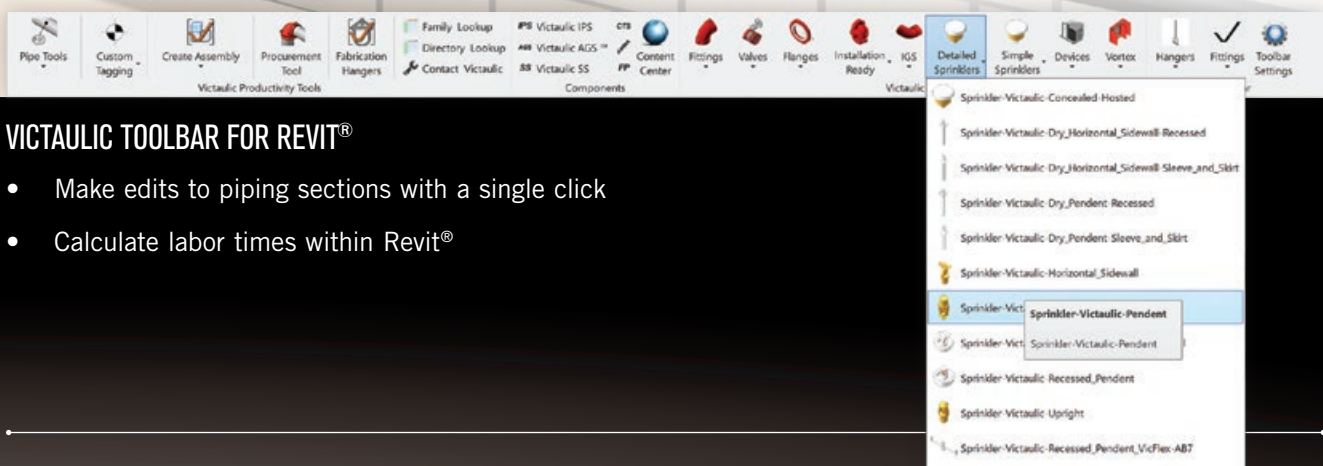
## EARLY BILLS OF MATERIAL IN REVIT® IS POSSIBLE

The procurement tool within Victaulic Tools for Revit® allows you to select an area within your model and easily create bills of material, including tags, part numbers, and finishes, eliminating the need for secondary software.



**Victaulic Tools for Revit®**  
provides an intuitive set of tools that are purposely built to improve pipe routing functionality in Autodesk Revit®. It's specifically designed to meet the needs of engineers and contractors – giving you smart tools to route piping accurately and efficiently.

[victaulicsoftware.com](http://victaulicsoftware.com)



#### VICTAULIC TOOLBAR FOR REVIT®

- Make edits to piping sections with a single click
- Calculate labor times within Revit®

# DEFINING INNOVATION *since* 1919

Since 1919, when Victaulic's first patent was filed, customers have always been able to stand on the company's commitment to quality and excellence. A century later, it's difficult to imagine a world without Victaulic. From the world's tallest building to its deepest mine, the company has evolved through a fierce determination to meet and surpass customer needs in the fields of building services, clean water and wastewater, fire protection, industrial construction, maritime, mining, oil, gas and chemical, and power generation.

Over the last 100 years Victaulic has solved the toughest challenges for its customers and set new standards for the industry.



A New York fireboat pumped water from the Hudson River through 1,000 ft | 305 m of 8" | DN200 lightweight pipe that rookie fire crews had assembled with Victaulic couplings. In 1952, Underwriters' Laboratories (UL) approved Victaulic's couplings and fittings for use with fire protection systems.



1919

Grooved End Pipe Joining  
Invented by Victaulic



1934

Victaulic® Flexible Couplings  
Gain FM Approval for Use  
in Earthquake Areas



1957

Victaulic Introduces Roll Grooving  
Method to the Fire Protection Industry



1964

Flush-Seal™ Gasket Developed  
for Dry Systems



1972

Pioneered UL Approval for  
Roll Grooving Lightwall Pipe



1975

First Mechanical Tee for Branch  
Connections Style 920

Introduced *Vic-Check*  
Check Valve



1986

First Rubber Coated Butterfly  
Valve for Fire Protection



Grooved End Pipe Joining  
Introduced in the U.S.

1925



First Grooved End Coupling  
to Achieve UL Listing

1952



Introduced First Production Roll Groover

1962



First Outlet Coupling Introduced  
First Direct Flange-to-Groove Adapter

1969



First Reducing On-The-Run  
Coupling Style 750

1974



Introduced FIT: First  
Locking Lug System  
*Vic-Tap*: First Full Port  
Hot Tapping Device  
with UL Listing

1978

*continued*

1990

FireLock™ Fittings: First Full-flow, Short-radius Fittings Designed for the Fire Protection Industry



1999

Introduced Victaulic® FireLock™ Sprinklers and Accessories



2005

FireLock EZ™: First Rigid Coupling with Installation-Ready™ Technology

FireLock NXT™ Check Valve Systems



2011

VicFlex™ Series AH2 Braided Hose and Style AB1 Bracket



2013

FireLock™ ECLH Sprinkler Model V31

VicFlex™ Hard-lid Ceiling Bracket Style AB2



2015

FireLock NXT™ Devices Style 768N

Joint Venture with BERMAD™ Hydraulic Control Valves

EndSeal™ Couplings with API607 Approved Gasket



FireLock™ Style 005 Rigid Coupling

FireLock™ Butterfly Valve Series 707: the First Valve Pre-wired and Tested for Panel Connectivity

1988



FireLock™ Check Valve Series 717:

First Extended Body Swing/Check Design

Enhanced Tracking Roll Sets for "Hands Off" Grooving

1994



FireLock NXT™ Devices Introduced

2004



Victaulic Vortex™ Hybrid Fire Extinguishing System Gains FM Approval CL-5580 for Use in Machine Spaces

2009



FireLock EZ™ Style 009N Installation-Ready Coupling Introduced

Victaulic Vortex™ 500

2012



FireLock™ Fire-Pac Series 745

Style 009N Installation-Ready™ Coupling to 8" | 200 mm

Corrosion Resistance Coating for Sprinklers VC-250

VicFlex™ Flexible Drop Style AH1

2014

*continued*




2016

FireLock™ Fittings with Installation-Ready™ Technology  
VicFlex™ Flexible Dry Sprinkler  
FireLock NXT™ Series 769N Preaction/Deluge Check Valve



2018

Style 109 FireLock™ One-Bolt Installation-Ready™ Coupling  
Style V9 FireLock™ Installation-Ready™ Sprinkler Coupling



AH2-CC First Flexible Fitting Utilizing a Mechanical Connection to the Branchline  
FireLock™ IGS™ (Innovative Groove System)


IGS™

2017



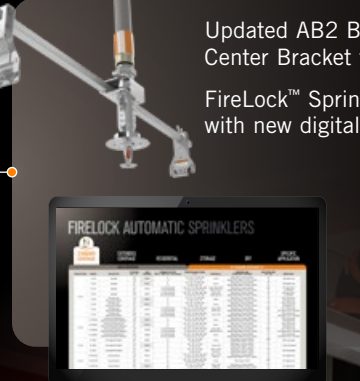
Vicflex™ Style AB6 Bracket for Cold Storage

2019



Updated AB2 Bracket with Over/Under Center Bracket for versatility  
FireLock™ Sprinkler Offering Expanded with new digital tools

2021



Creating innovative solutions for the construction industry marks Victaulic's approach – an approach which we intend to maintain and commit to for the next 100 years. Innovation has always been Victaulic's hallmark, in turn producing elegant solutions. Victaulic's intellectual property, with more than 2,000 patents granted, is the largest in the mechanical pipe joining industry. A crucial differentiator for Victaulic, inventing and applying technologies that exceed customer and industry expectations will drive future growth. Victaulic, the world leader in grooved mechanical pipe joining systems, has shaped the course of history.

# Easy search. Easy choice.



# FIRELOCK AUTOMATIC SPRINKLERS

STANDARD COVERAGE

EXTENDED COVERAGE

RESIDENTIAL

STORAGE

DRY

SPECIFIC APPLICATION

QUICK RESPONSE			STANDARD RESPONSE			EXTENDED RESPONSE				
PUBLICATION	SERIES	DEFLECTION	K-FACTOR (IMP. / U.S.)	SN. NUMBER	CONNECTION TYPE	TEMPERATURE RATING (°F)	APPROXIMATE WEIGHT (LBS.)	APPROXIMATE HEIGHT (FT.)	APPROXIMATE WIDTH (IN.)	REMARKS
#1.01	FL GR	Upright	5.6	V3001	1/2"	135, 155, 175, 200, 240	100	10	10	100 Open End
	FL GR	Upright	5.6	V3002	1/2"	135, 155, 175, 200, 240	100	10	10	100 Open End
	FL GR	Upright	5.6	V3003	1/2"	135, 155, 175, 200, 240	100	10	10	100 Open End
	FL GR	Upright	5.6	V3004	1/2"	135, 155, 175, 200, 240	100	10	10	100 Open End
	FL GR	Upright	5.6	V3005	1/2"	135, 155, 175, 200, 240	100	10	10	100 Open End
	FL GR	Upright	5.6	V3006	1/2"	135, 155, 175, 200, 240	100	10	10	100 Open End
	FL GR	Upright	5.6	V3007	1/2"	135, 155, 175, 200, 240	100	10	10	100 Open End
	FL GR	Upright	5.6	V3008	1/2"	135, 155, 175, 200, 240	100	10	10	100 Open End
	FL GR	Upright	5.6	V3009	1/2"	135, 155, 175, 200, 240	100	10	10	100 Open End
	FL GR	Upright	5.6	V3010	1/2"	135, 155, 175, 200, 240	100	10	10	100 Open End
#1.02	FL GR	Upright	5.6	V3011	1/2"	135, 155, 175, 200, 240	100	10	10	100 Open End
	FL GR	Upright	5.6	V3012	1/2"	135, 155, 175, 200, 240	100	10	10	100 Open End
	FL GR	Upright	5.6	V3013	1/2"	135, 155, 175, 200, 240	100	10	10	100 Open End
	FL GR	Upright	5.6	V3014	1/2"	135, 155, 175, 200, 240	100	10	10	100 Open End
	FL GR	Upright	5.6	V3015	1/2"	135, 155, 175, 200, 240	100	10	10	100 Open End
	FL GR	Upright	5.6	V3016	1/2"	135, 155, 175, 200, 240	100	10	10	100 Open End
	FL GR	Upright	5.6	V3017	1/2"	135, 155, 175, 200, 240	100	10	10	100 Open End
	FL GR	Upright	5.6	V3018	1/2"	135, 155, 175, 200, 240	100	10	10	100 Open End
	FL GR	Upright	5.6	V3019	1/2"	135, 155, 175, 200, 240	100	10	10	100 Open End
	FL GR	Upright	5.6	V3020	1/2"	135, 155, 175, 200, 240	100	10	10	100 Open End
#1.03	FL GR	Upright	5.6	V3021	1/2"	135, 155, 175, 200, 240	100	10	10	100 Open End
	FL GR	Upright	5.6	V3022	1/2"	135, 155, 175, 200, 240	100	10	10	100 Open End
	FL GR	Upright	5.6	V3023	1/2"	135, 155, 175, 200, 240	100	10	10	100 Open End
	FL GR	Upright	5.6	V3024	1/2"	135, 155, 175, 200, 240	100	10	10	100 Open End
	FL GR	Upright	5.6	V3025	1/2"	135, 155, 175, 200, 240	100	10	10	100 Open End
	FL GR	Upright	5.6	V3026	1/2"	135, 155, 175, 200, 240	100	10	10	100 Open End
	FL GR	Upright	5.6	V3027	1/2"	135, 155, 175, 200, 240	100	10	10	100 Open End
	FL GR	Upright	5.6	V3028	1/2"	135, 155, 175, 200, 240	100	10	10	100 Open End
	FL GR	Upright	5.6	V3029	1/2"	135, 155, 175, 200, 240	100	10	10	100 Open End
	FL GR	Upright	5.6	V3030	1/2"	135, 155, 175, 200, 240	100	10	10	100 Open End
#1.04	FL GR	Upright	5.6	V3031	1/2"	135, 155, 175, 200, 240	100	10	10	100 Open End
	FL GR	Upright	5.6	V3032	1/2"	135, 155, 175, 200, 240	100	10	10	100 Open End
	FL GR	Upright	5.6	V3033	1/2"	135, 155, 175, 200, 240	100	10	10	100 Open End
	FL GR	Upright	5.6	V3034	1/2"	135, 155, 175, 200, 240	100	10	10	100 Open End
	FL GR	Upright	5.6	V3035	1/2"	135, 155, 175, 200, 240	100	10	10	100 Open End
	FL GR	Upright	5.6	V3036	1/2"	135, 155, 175, 200, 240	100	10	10	100 Open End
	FL GR	Upright	5.6	V3037	1/2"	135, 155, 175, 200, 240	100	10	10	100 Open End
	FL GR	Upright	5.6	V3038	1/2"	135, 155, 175, 200, 240	100	10	10	100 Open End
	FL GR	Upright	5.6	V3039	1/2"	135, 155, 175, 200, 240	100	10	10	100 Open End
	FL GR	Upright	5.6	V3040	1/2"	135, 155, 175, 200, 240	100	10	10	100 Open End

Quickly find the sprinklers you need for your next project with our interactive sprinkler chart and enhanced catalog and search functionality. Featuring intuitive filters and more information with less clicks, check it out for yourself today.

[victaulic.com](http://victaulic.com)



PB-400 9317 REV I 09/2021

Victaulic and all other Victaulic marks are the trademarks or registered trademarks of Victaulic Company, and/or its affiliated entities, in the U.S. and/or other countries. All other trademarks listed herein are the property of their respective holders, in the U.S. and/or other countries. The terms "Patented" or "Patent Pending" refer to design or utility patents or patent applications for articles and/or methods of use in the United States and/or other countries. © 2021 VICTAULIC COMPANY. ALL RIGHTS RESERVED.

