



PERIMETER FENCE

PRODUCT GUIDE 2025



WALPOLEOUTDOORS.COM

TABLE OF CONTENTS

FENCE STYLES	4		
CUSTOMIZATION OPTIONS	6		
FEATURES	8		
PICKET	10	LATTICE	54
CHESTNUT HILL	14	1.5" HORIZONTAL-VERTICAL	58
NANTUCKET	16	2.5" HORIZONTAL-VERTICAL	60
SUDBURY	18	5" HORIZONTAL-VERTICAL	62
YORKTOWN	20	1.5" DIAGONAL	64
WESTCHESTER	22	2.5" DIAGONAL	65
RICHMOND	24	5" DIAGONAL	66
BRENTWOOD	26		
SCREEN	28	POST & WIRE	68
UNIVERSAL	32	SAG HARBOR	70
HORIZONTAL UNIVERSAL	34	POST & RAIL	72
CHESAPEAKE	36	MORGAN	74
LOUVERED	38		
SPACED HORIZONTAL	40	ADDITIONAL DESIGN OPTIONS	76
		PREMIUM WALK GATES	77
BOARD & TOPPER	42	ARBORS	88
HIGHLAND	46		
YORKTOWN	48	ADDITIONAL FENCE APPLICATIONS	80
24" LATTICE TOPPER	50		
18" LATTICE TOPPER	52		

Define with Distinction

Engineered for lasting beauty and performance, our perimeter fencing enhances outdoor spaces with refined design and reliable function. Explore a diverse selection of timeless styles, each customizable to harmonize with the surrounding landscape and outdoor aesthetic.





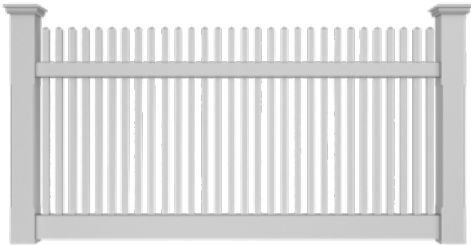
Sag Harbor fence painted Iron Ore

SIGNATURE FENCE DESIGN

When selecting a Walpole Outdoors fence, consider both its primary function—whether to provide privacy, enhance curb appeal, or ensure the safety of children and pets—and how it will harmonize with your home’s architecture and landscape design. Our extensive range includes six distinct styles, from formal and square-edged to rustic farm-inspired and sleek contemporary options, offering the perfect solution for every outdoor setting. Walpole fences stand apart with sophisticated, architecturally elegant designs and superior craftsmanship.

Our reputation for exceptional fences is well-earned, and for those seeking something truly extraordinary, Walpole Outdoors is in a class of its own. The difference lies in the details: every piece is meticulously handcrafted, and with countless customization options—such as choosing the shape of fence sections and gates, selecting single or double gates, upgrading to pillar posts, or swapping post caps for a modern flair—you can create a fence that is uniquely yours.

FENCE STYLES



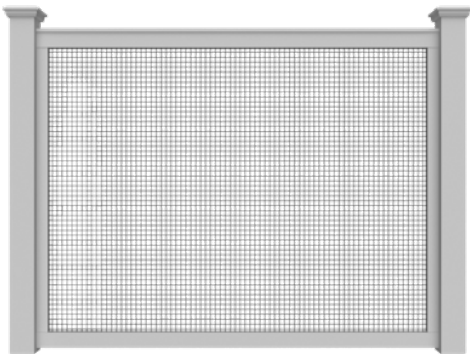
PICKET



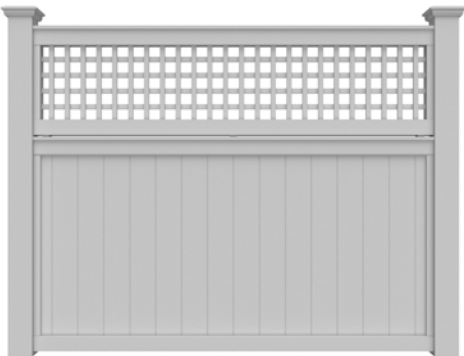
POST & RAIL



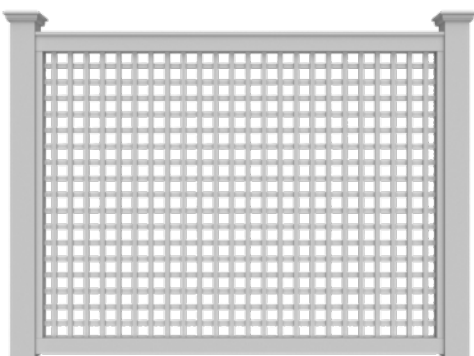
SCREEN



POST & WIRE



SEMI-SCREEN / BOARD & TOPPER



SEMI-SCREEN / LATTICE

CUSTOMIZATION OPTIONS

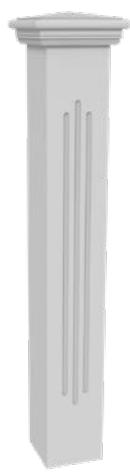
POST DECORATIONS sizes up to 5.5" sq

Our 5½" square post is the standard across most Walpole Outdoors fence styles—offering clean, classic lines and dependable support. Customers may choose to customize their 5½" sq posts with decoration: 3 flutes, 5 flutes, or eased edges.

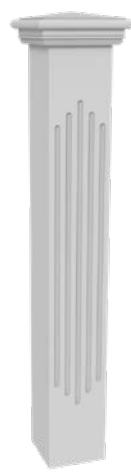
Optional 5½" Sq Post Upgrades



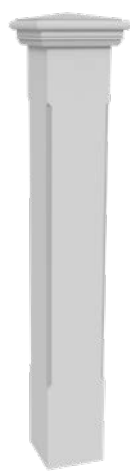
Smooth



3 Flutes



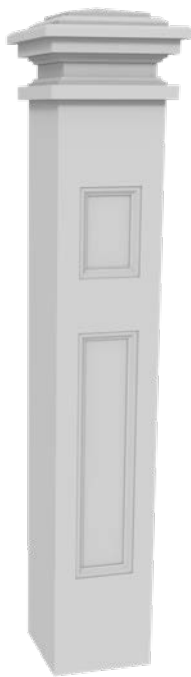
5 Flutes



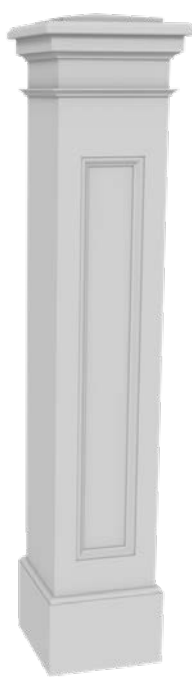
Eased Edge

PILLAR POSTS sizes of 8" sq - 16" sq (in two-inch increments)

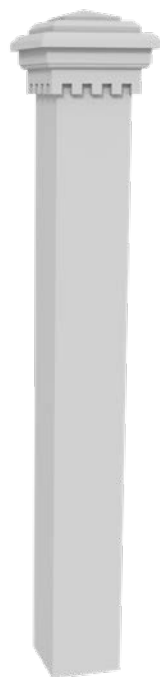
For those seeking greater architectural impact, we offer optional pillar posts ranging from 8" to 16" square (in two-inch increments). Whether anchoring a gate, flanking a driveway, or framing key sections of your fence, larger posts bring added dimension, weight, and visual sophistication.



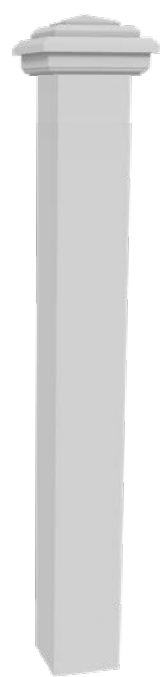
Bostonian
12" sq shown



Wenham
12" sq shown



Darien
8" sq shown



Darien -
No Dentils
8" sq shown

POST CAPS

Walpole Outdoors fences come standard with the Westport post cap, with a number of additional styles available as optional customizations. The following Post Caps are offered for both Solid Cellular Vinyl and Cedar 5.5" square posts—with the exception of the Bedford Cap, which is available only for Solid Cellular Vinyl fence posts.



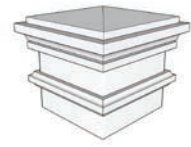
Westport



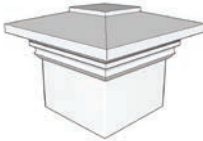
Colonial



Southport (with Copper)



Bedford (CPVC only)



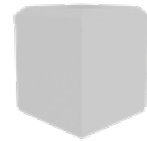
Falmouth



Contemporary



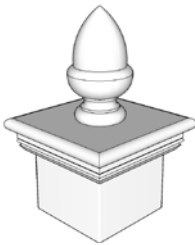
True Copper



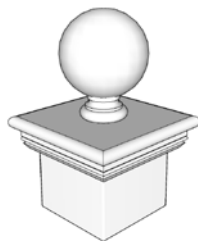
Bevel

FINIALS Solid Cellular Vinyl only

Further customize your post cap with an optional, finely crafted finial. Choose from classic decorative styles to add architectural interest to your fence.



Acorn



Sphere



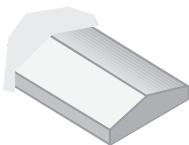
Grecian Urn



Tudor Urn

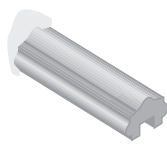
FENCE CAPS * Solid Cellular Vinyl only ** Cedar only

Expertly crafted for a refined finish, our optional fence caps—ranging from clean-lined to more ornamental styles—add lasting beauty to your fence. See below for compatible collections.



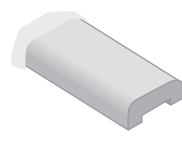
Architectural

Universal
Lattice
Sag Harbor
Lattice Toppers



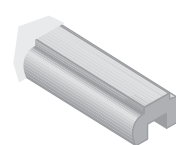
Artistic

Chesapeake
Nantucket
Sudbury*



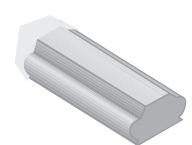
Decorative

Chesapeake**
Nantucket
Sudbury*



Essex

Chesapeake**
Nantucket
Sudbury



Yorktown

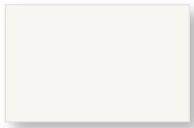
Universal
Lattice
Sag Harbor
Lattice Toppers

FEATURES

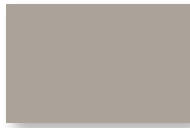
PAINT COLORS

Our quality controlled in-line coating system ensures uniform coverage on your perimeter fence and gates. We use only top quality VinylSafe paint, offered with a 25-year warranty. Products are pre-finished in white unless one of our signature paint colors (below) are specified. We can also custom mix our coatings to meet unique style needs.

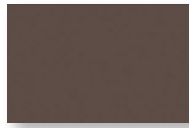
Signature paint colors



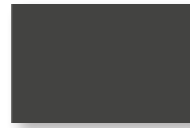
SW 7006
Extra White



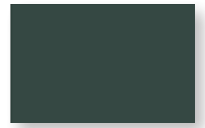
SW 7024
Functional Gray



SW 3021
Spicewood
(Woodscapes)



SW 7069
Iron Ore



SW Custom
Verde Green

MATERIALS

Each Walpole Outdoors fence is expertly handcrafted from high-quality solid cellular vinyl or select-grade northern cedar. Available material options for each fence collection are listed on the following product pages.

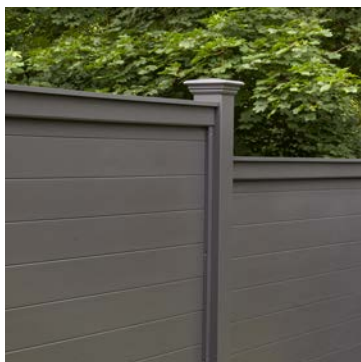
Solid Cellular Vinyl

Solid cellular vinyl is an advanced material that captures the beauty and strength of wood while resisting moisture, corrosion, and termites. Unlike the vinyl found in big box stores, Walpole Outdoors' solid cellular vinyl is engineered for lasting performance you can see and feel—and it's backed by a 25-year limited warranty.

Solid cellular vinyl fences arrive factory finished in classic white, and they can be painted a variety of vinyl-safe colors. Our Signature paint colors are shown above, or customers may request a custom color match for a personalized touch.



Chestnut Hill in White



Horizontal Universal in Iron Ore

Cedar

Our wood fences are made from select-grade Northern cedar, prized for its natural durability and timeless appeal. Walpole Outdoors' cedar fences blend seamlessly with both classic and modern styles, bringing warmth and elegance to any outdoor setting.

Cedar fences arrive unstained, allowing the wood to naturally weather to a stunning silver-gray patina. Cedar may also be stained in our signature colors.



Chesapeake in unstained Cedar
(before aging to silver-gray patina)



GATE HARDWARE

Our fence walk gates are accented with a collection of quality hardware that is crafted from low carbon steel, hot dip galvanized, and finished with a semi-gloss black powder coating. Powder-coated stainless steel options are available for coastal locations. Choose from our standard hardware kit with twisted ring latch or the contemporary kit (both shown below).

Twisted Ring Gate Latch



Front



Back

Reversible Strap Hinge Pair



Straight-Top



Straight-Bottom



Scallop-Top



Scallop-Bottom

Contemporary Ring Gate Latch



Front



Back

Contemporary Strap Hinge Pair



Top



Bottom

Custom stainless steel powder coated curve strap hinge (not pictured) is also available.



Gate Stop

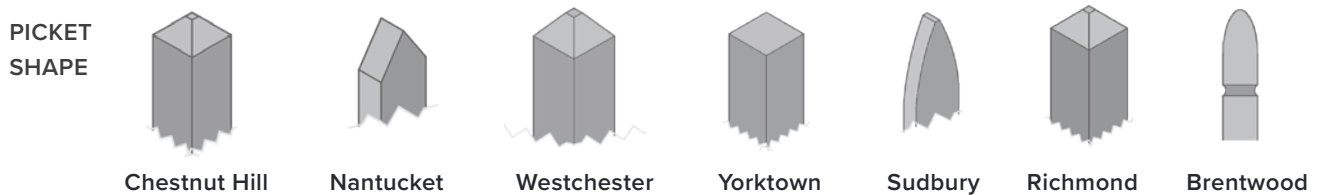
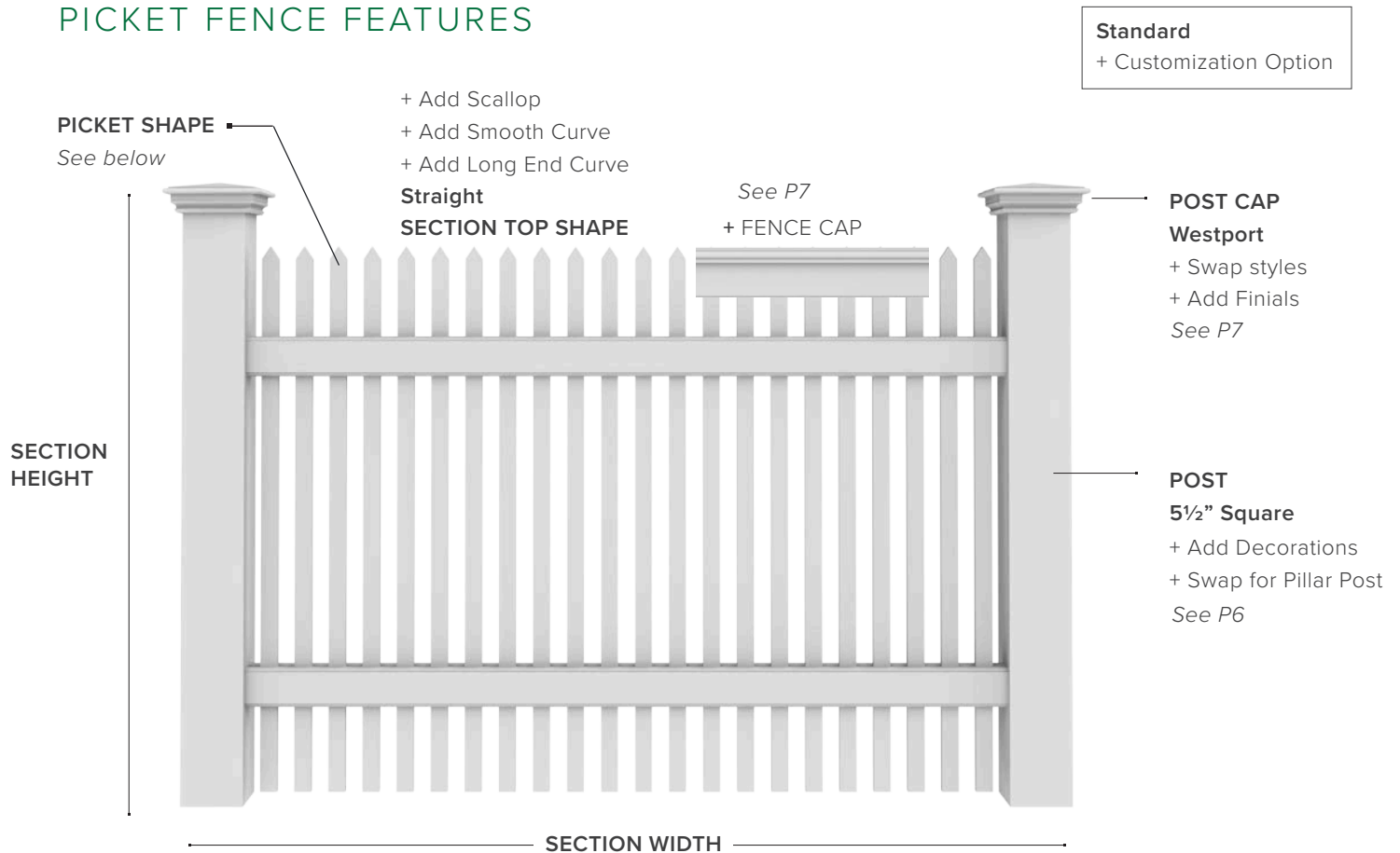


Cane Bolt
(Double Gates)

PICKET FENCE



PICKET FENCE FEATURES



SIZE & MATERIAL OPTIONS

PICKET STYLE	SECTION HEIGHT						SECTION WIDTH				MATERIAL	
	3'	3.5'	4'	4.5'	5'	6'	4'	6'	8'	10'	CPVC	Cedar
Brentwood	●	●	●		●	●*	●	●	●	●	●	
Chestnut Hill	●	●	●	●	●	●	●	●	●		●	●
Nantucket	●	●	●		●	●	●	●	●		●	●
Richmond	●	●	●		●	●	●	●	●		●	
Sudbury	●	●	●		●	●	●	●	●		●	
Westchester		●	●		●	●	●	●	●		●	
Yorktown	●	●	●		●	●	●	●	●		●	●

* 6' H section available with 4'W or 6'W only

● Solid Cellular Vinyl only

PICKET FENCE SIGNATURE STYLES

With its strong vertical lines, there’s an orderly stateliness to this popular and enduring fence style. Whether you choose the Westchester with its row of lower pickets, the bold and geometric lines of the Yorktown, the charming, wider Sudbury picket, or any of the many other styles, the picket fence is certain to create a graceful appearance that dignifies and enhances the beauty of any boundary. Ideal for defining space without closing it off, a picket fence offers openness, charm, and classic curb appeal.

BRENTWOOD

CPVC



CHESTNUT HILL

CEDAR CPVC



NANTUCKET

CEDAR CPVC



RICHMOND

CPVC



SUDBURY

CPVC



WESTCHESTER

CPVC



YORKTOWN

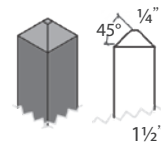
CEDAR CPVC



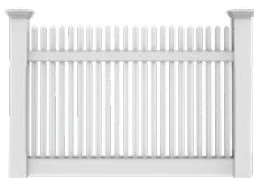
PICKET: CHESTNUT HILL

7543- CPVC 1043- Cedar

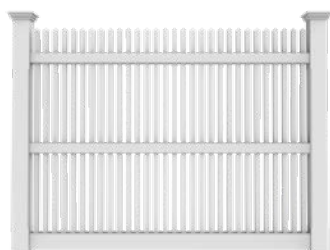
Connection:
Mortise & Tenon



SECTION SHAPES



Straight
4'H x 6'W shown

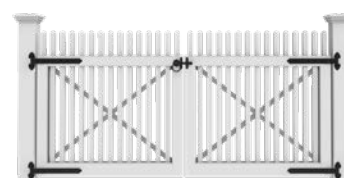


Straight
6'H x 8'W shown

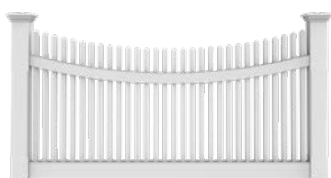
GATE SHAPES



Straight
4'H x 4'W shown



Straight
4'H x 8'W shown

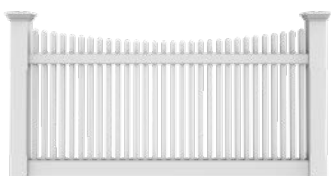
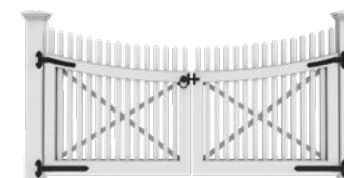


Scallop

Sections 6'H and over are shown when required to illustrate design that varies from shorter height sections



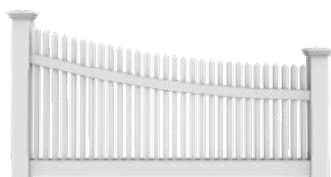
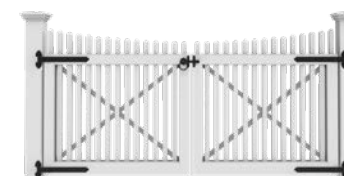
Scallop



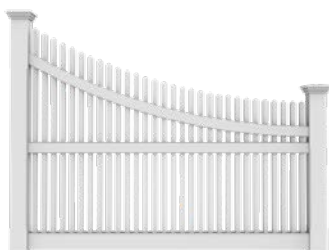
Scallop Pickets



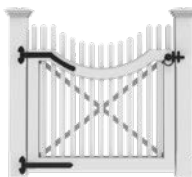
Scallop Pickets



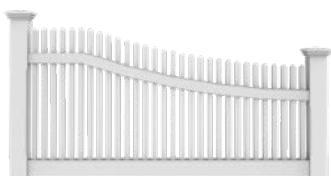
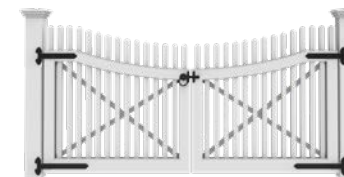
Smooth Curve 4'H



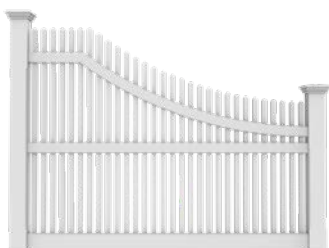
Smooth Curve 6'H



Annisquam Scallop



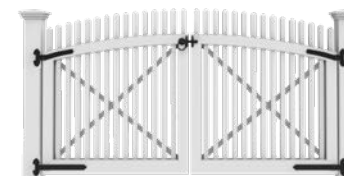
Long End Curve 4'H



Long End Curve 6'H



Arch



Annisquam Arch

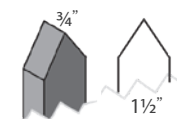


1 Chestnut Hill with straight sections and straight double gate 2 Chestnut Hill with Scallop Picket sections and Long End Curve
3 Chestnut Hill with Bostonian Pillar Post and Smooth Curve sections 4 Chestnut Hill with Bostonian Pillar detail

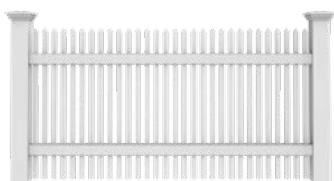
PICKET: NANTUCKET

7547- CPVC 1047- Cedar

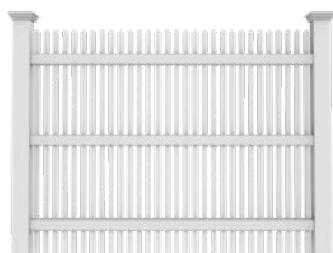
Connection:
Mortise & Tenon



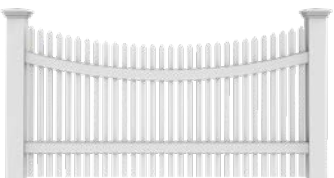
SECTION SHAPES



Straight
4'H x 8'W shown

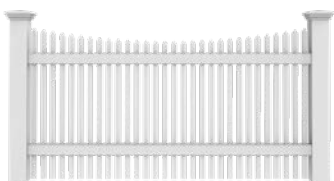


Straight
6'H x 8'W shown

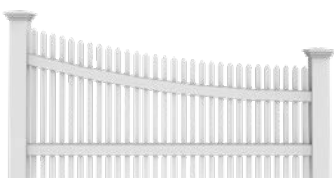


Scallop

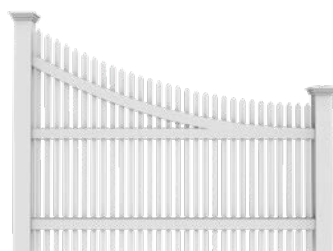
Sections 6'H and over are shown when required to illustrate design that varies from shorter height sections



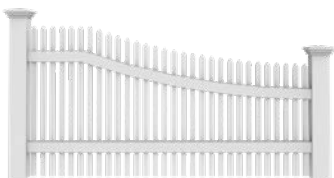
Scallop Pickets



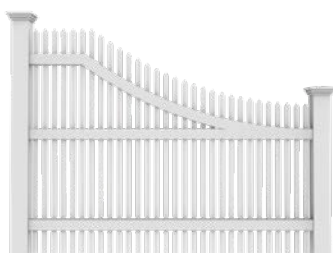
Smooth Curve 4'H



Smooth Curve 6'H



Long End Curve 4'H

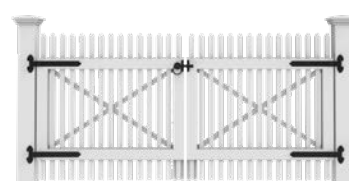


Long End Curve 6'H

GATE SHAPES



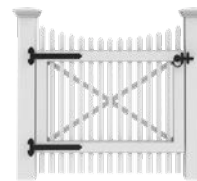
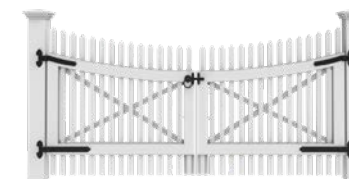
Straight
4'H x 4'W shown



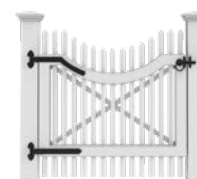
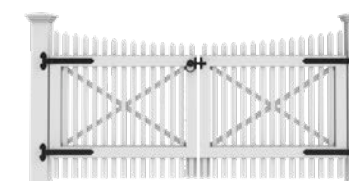
Straight
4'H x 8'W shown



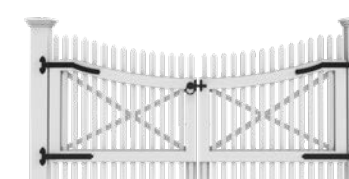
Scallop



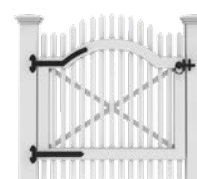
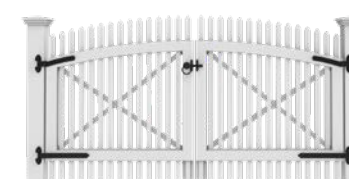
Scallop Pickets



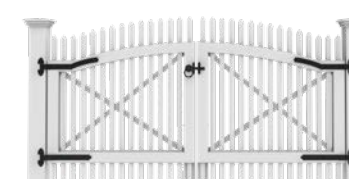
Annisquam Scallop

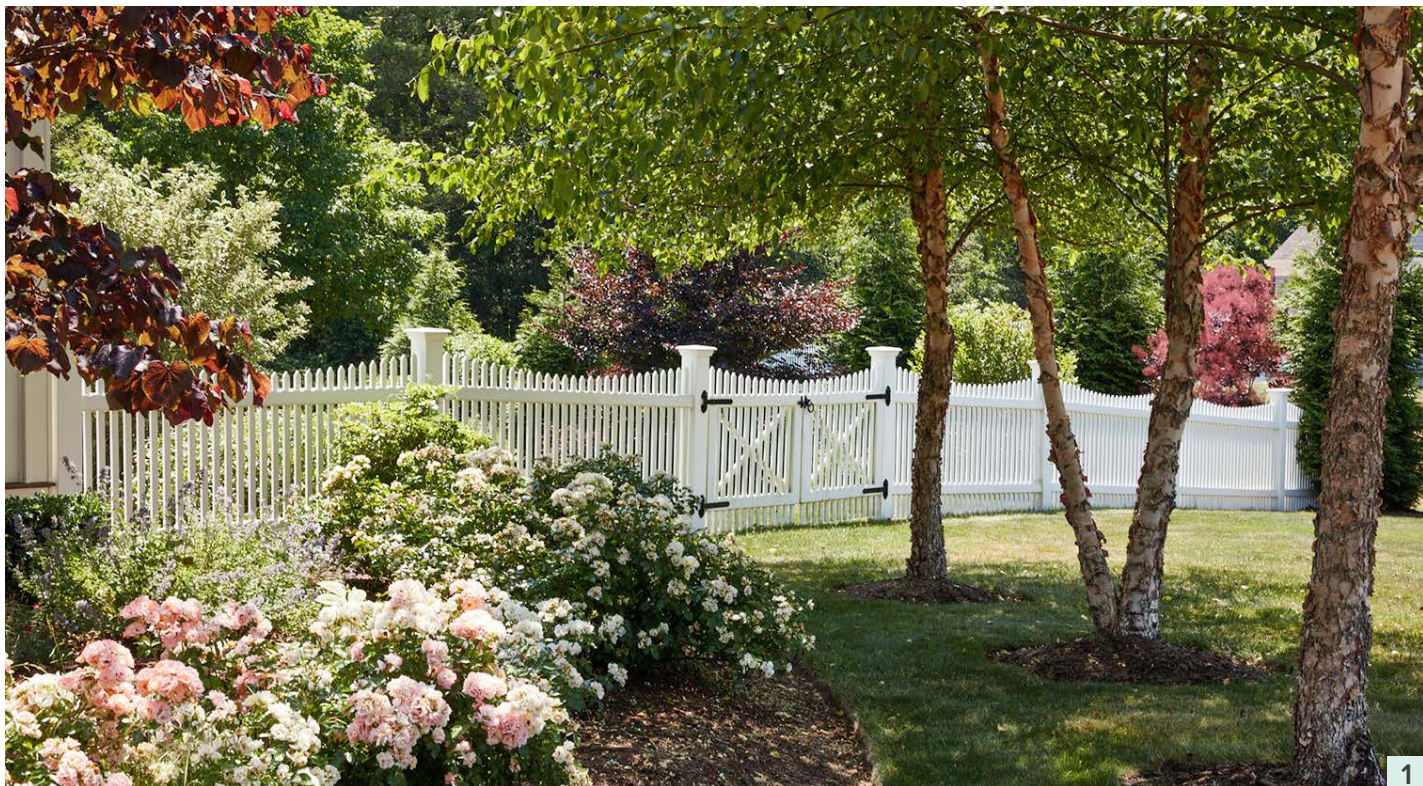


Arch



Annisquam Arch





1



2



3



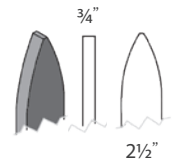
4

1 Nantucket with Scallop Picket sections and double gate 2 Nantucket with straight sections flanked at entry by granite post
3 Nantucket with straight sections in Cedar, painted Verde Green 4 Nantucket with straight sections ending in Oyster Bay curve

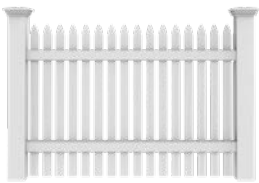
PICKET: SUDBURY

7545- CPVC

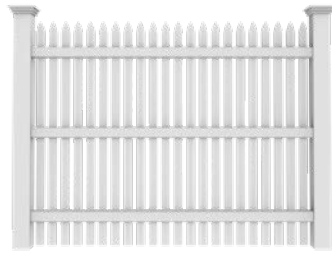
Connection:
Mortise & Tenon



SECTION SHAPES

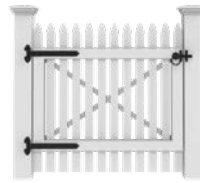


Straight
4'H x 6'W shown

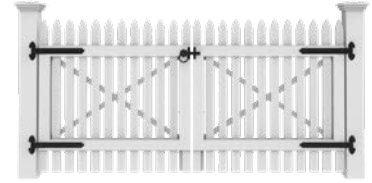


Straight
6'H x 8'W shown

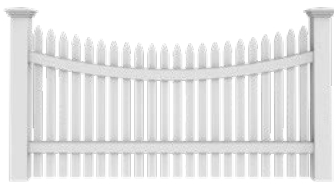
GATE SHAPES



Straight
4'H x 4'W shown



Straight
4'H x 8'W shown

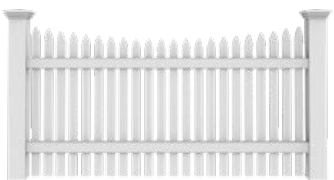
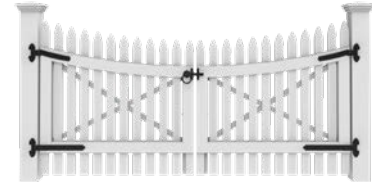


Scallop

Sections 6'H and over are shown when required to illustrate design that varies from shorter height sections



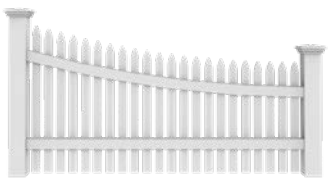
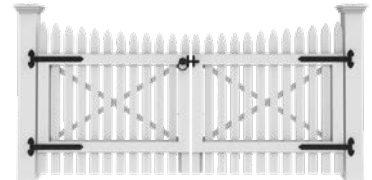
Scallop



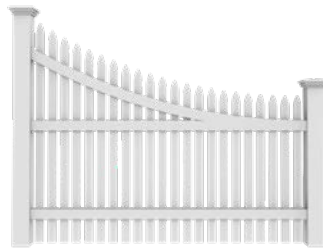
Scallop Pickets



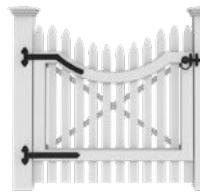
Scallop Pickets



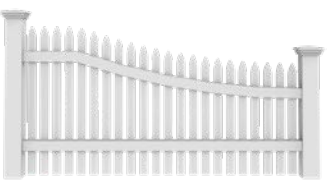
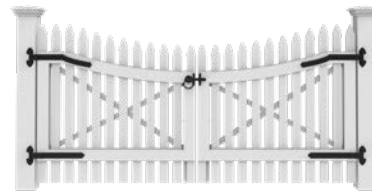
Smooth Curve 4'H



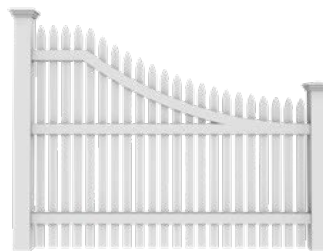
Smooth Curve 6'H



Annisquam Scallop



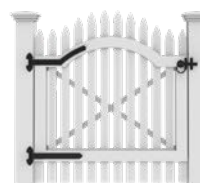
Long End Curve 4'H



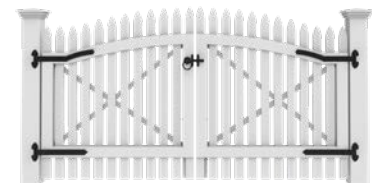
Long End Curve 6'H



Arch



Annisquam Arch





1



2



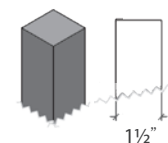
3

1 Sudbury with straight sections and Scallop single gate 2 Sudbury with straight sections and Scallop double gate with Spindle Top Arbor 3 Sudbury with Scallop Picket sections

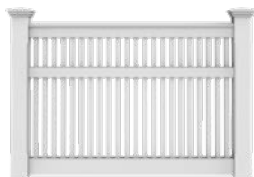
PICKET: YORKTOWN

7542- CPVC 1042- Cedar

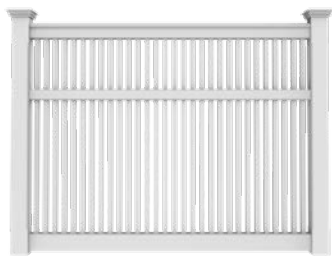
Connection:
Mortise & Tenon



SECTION SHAPES



Straight
4'H x 6'W shown

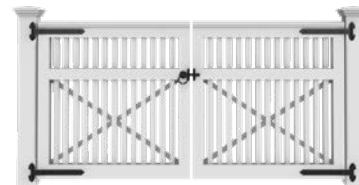


Straight
6'H x 8'W shown

GATE SHAPES



Straight
4'H x 4'W shown



Straight
4'H x 8'W shown

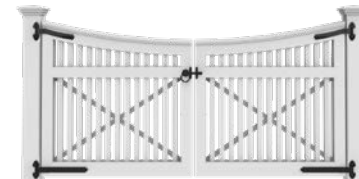


Scallop

Sections 6'H and over are shown when required to illustrate design that varies from shorter height sections



Scallop



Smooth Curve 4'H



Smooth Curve 6'H



Annisquam Scallop



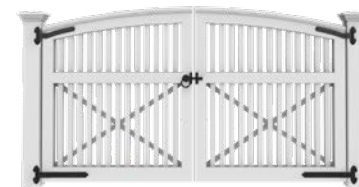
Long End Curve 4'H



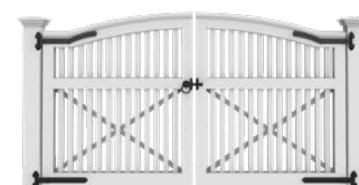
Long End Curve 6'H

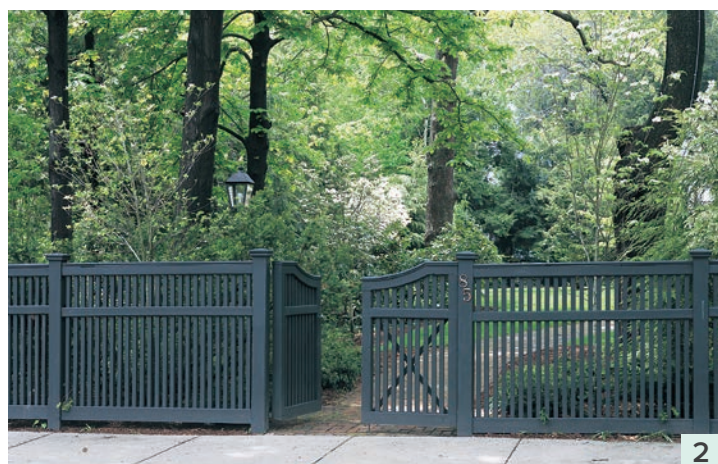


Arch



Annisquam Arch



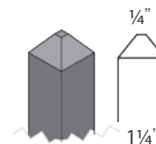


1 Yorktown with straight sections and sphere finials with double gate 2 Yorktown with straight sections and Annisquam Scallop double gate 3 Yorktown with straight sections and Arch single gate with Wenham pillar posts 4 Yorktown with straight sections

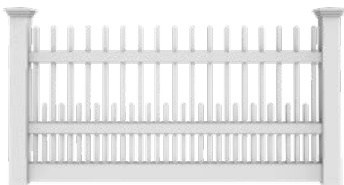
PICKET: WESTCHESTER

7540- CPVC

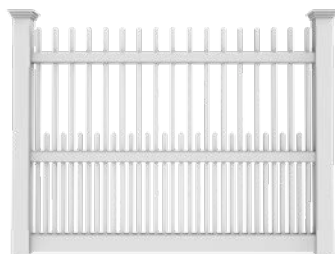
Connection:
Mortise & Tenon



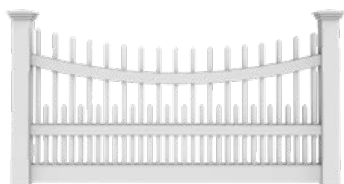
SECTION SHAPES



Straight
4'H x 8'W shown

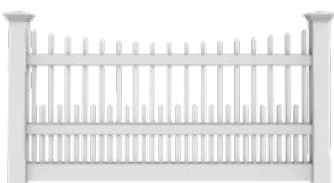


Straight
6'H x 8'W shown

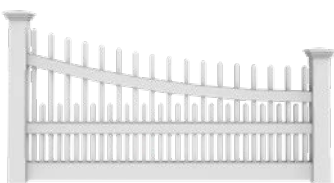


Scallop

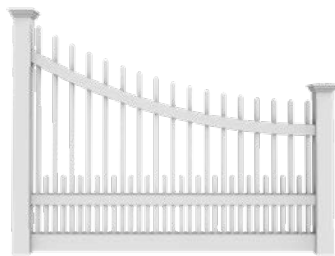
Sections 6'H and over are shown when required to illustrate design that varies from shorter height sections



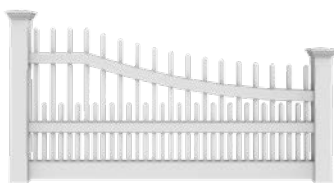
Scallop Pickets



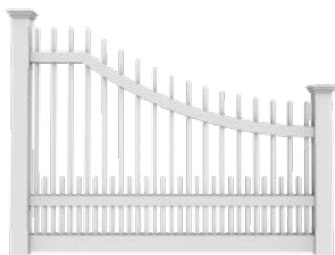
Smooth Curve 4'H



Smooth Curve 6'H

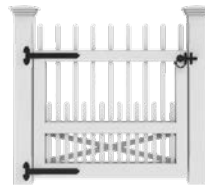


Long End Curve 4'H

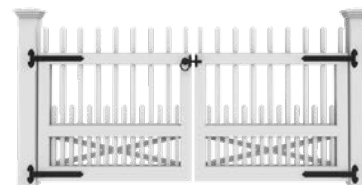


Long End Curve 6'H

GATE SHAPES



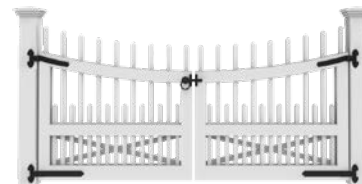
Straight
4'H x 4'W shown



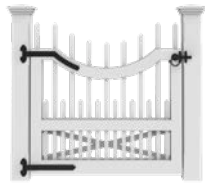
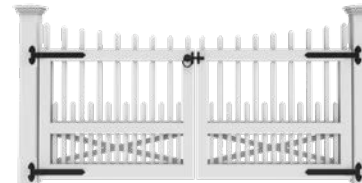
Straight
4'H x 8'W shown



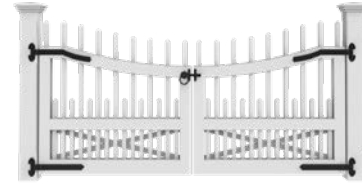
Scallop



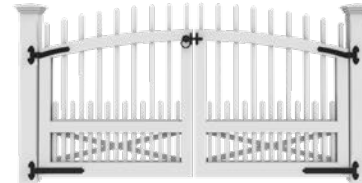
Scallop Pickets



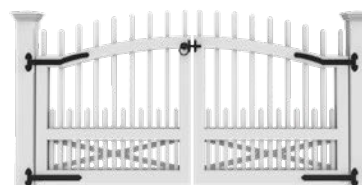
Annisquam Scallop



Arch



Annisquam Arch





1



2



3



4



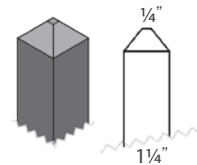
5

1 Westchester with straight sections and Annisquam Arch single gate 2 Westchester with straight sections and Bevel post caps
3 Westchester with straight sections painted Iron Ore 4 Westchester with straight sections and Annisquam Arch double gate with Arched Arbor 5 Westchester with straight sections painted custom color

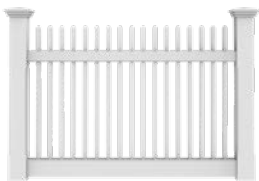
PICKET: RICHMOND

7539- CPVC

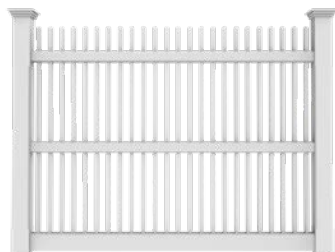
Connection:
Mortise & Tenon



SECTION SHAPES



Straight
4'H x 6'W shown

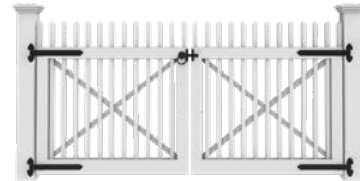


Straight
6'H x 8'W shown

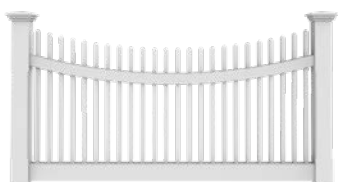
GATE SHAPES



Straight
4'H x 4'W shown



Straight
4'H x 8'W shown

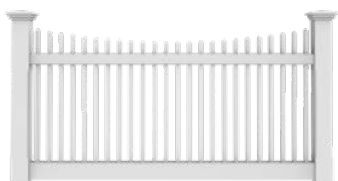
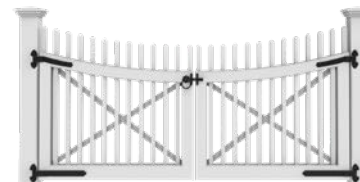


Scallop

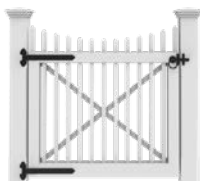
Sections 6'H and over are shown when required to illustrate design that varies from shorter height sections



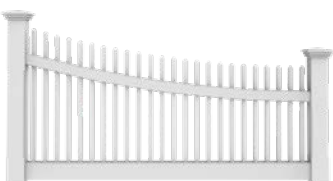
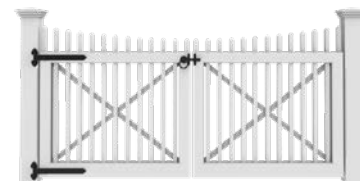
Scallop



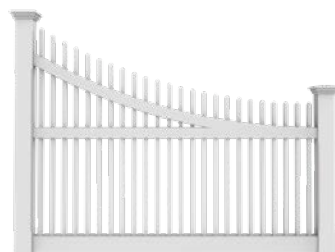
Scallop Pickets



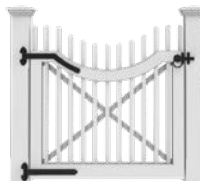
Scallop Pickets



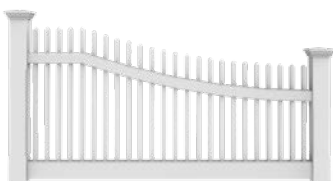
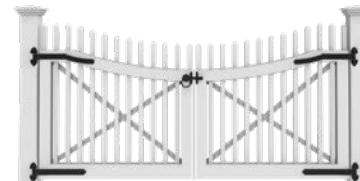
Smooth Curve 4'H



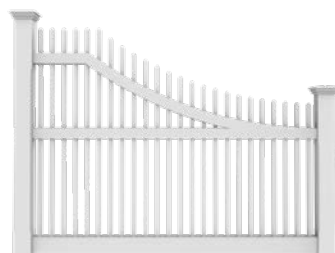
Smooth Curve 6'H



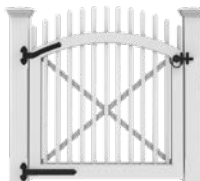
Annisquam Scallop



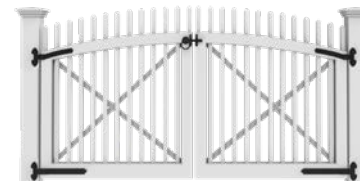
Long End Curve 4'H



Long End Curve 6'H



Arch



Annisquam Arch



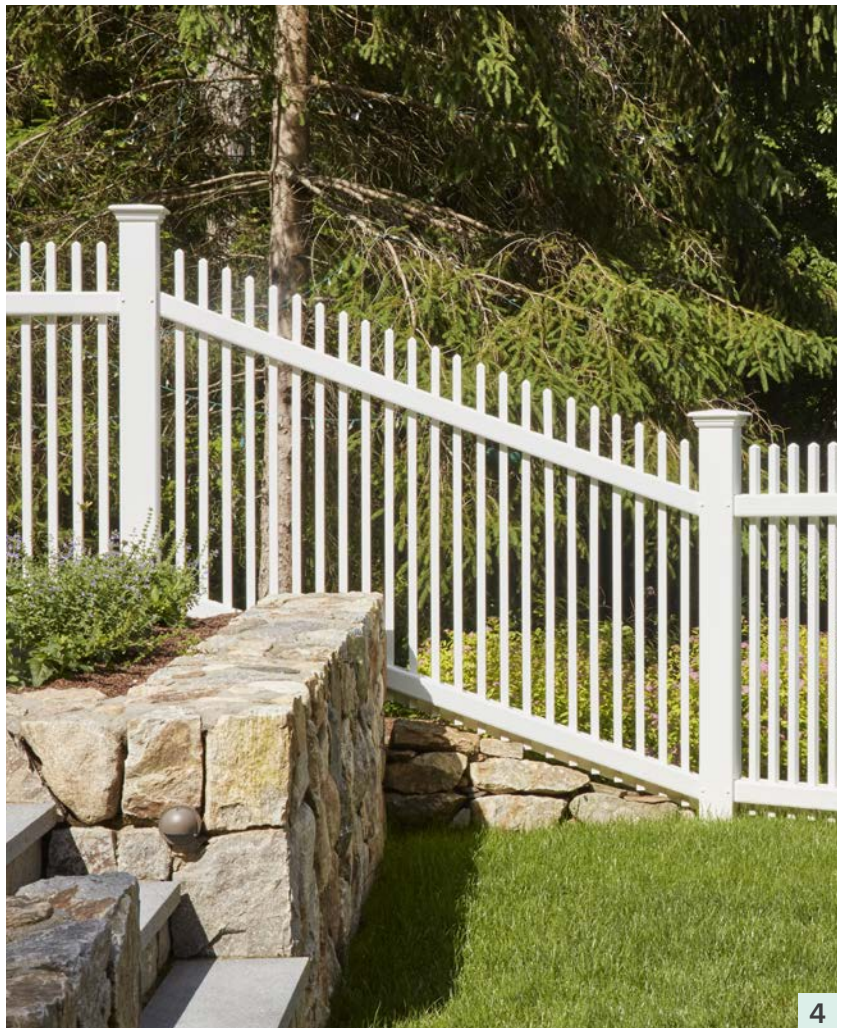
1



2



3



4

1 Richmond with straight sections and single and double gates 2 Richmond with straight sections and double gate
3 Richmond with straight sections and Spindle Top Arbor over single gate 4 Richmond with straight sections

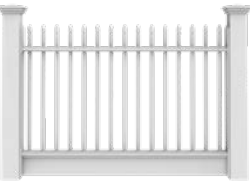
PICKET: BRENTWOOD SPINDLE

7548- CPVC

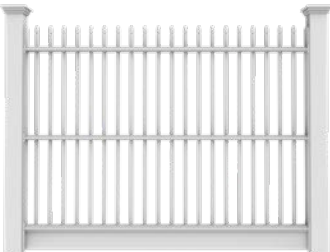
Connection:
Cleated



SECTION SHAPES



Straight
4'H x 6'W shown



Straight
6'H x 8'W shown

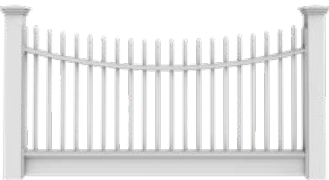
GATE SHAPES



Straight
4'H x 4'W shown



Straight
4'H x 8'W shown

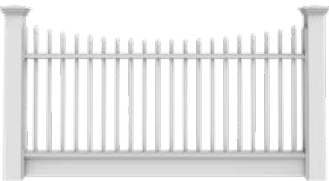


Scallop

Sections 6'H and over are shown when required to illustrate design that varies from shorter height sections



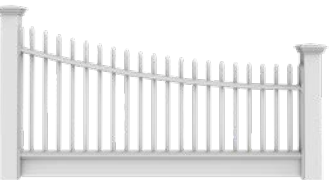
Scallop



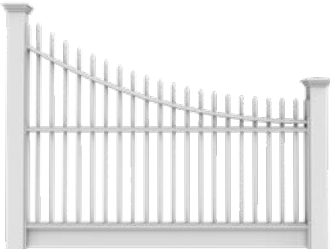
Scallop Pickets



Scallop Pickets



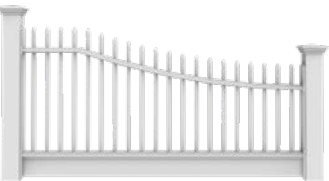
Smooth Curve 4'H



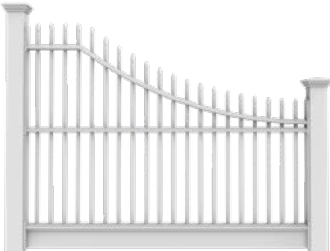
Smooth Curve 6'H



Annisquam Scallop



Long End Curve 4'H



Long End Curve 6'H

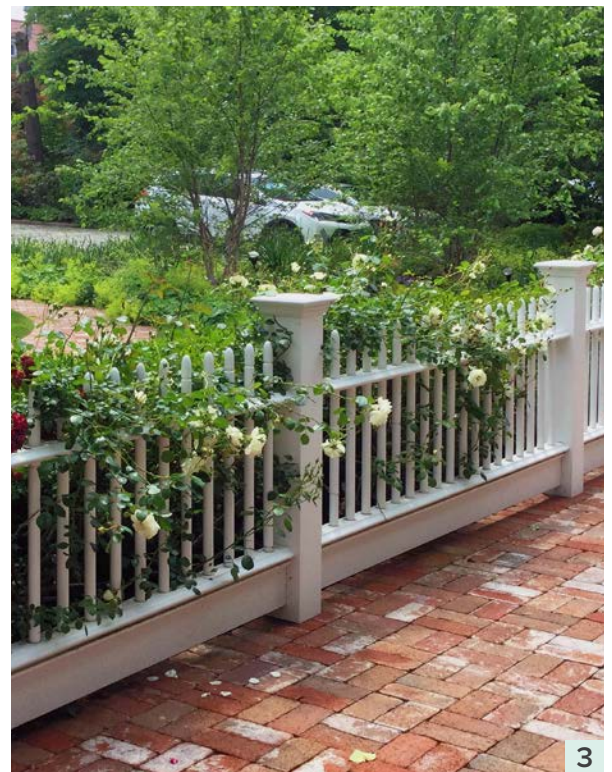
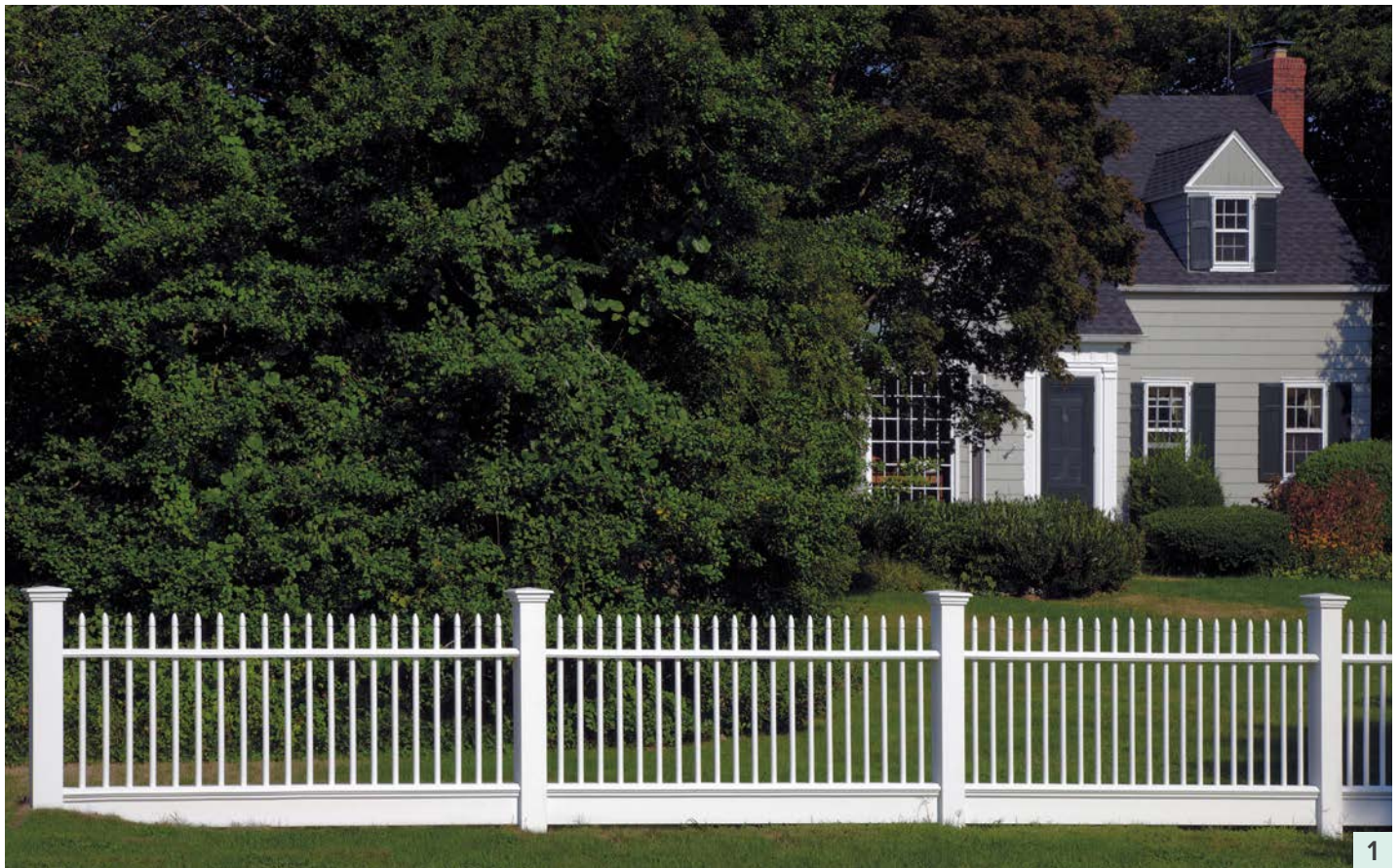


Arch



Annisquam Arch





1 Brentwood Spindle with straight sections 2 Brentwood spindle with straight sections 3 Brentwood Spindle with straight sections

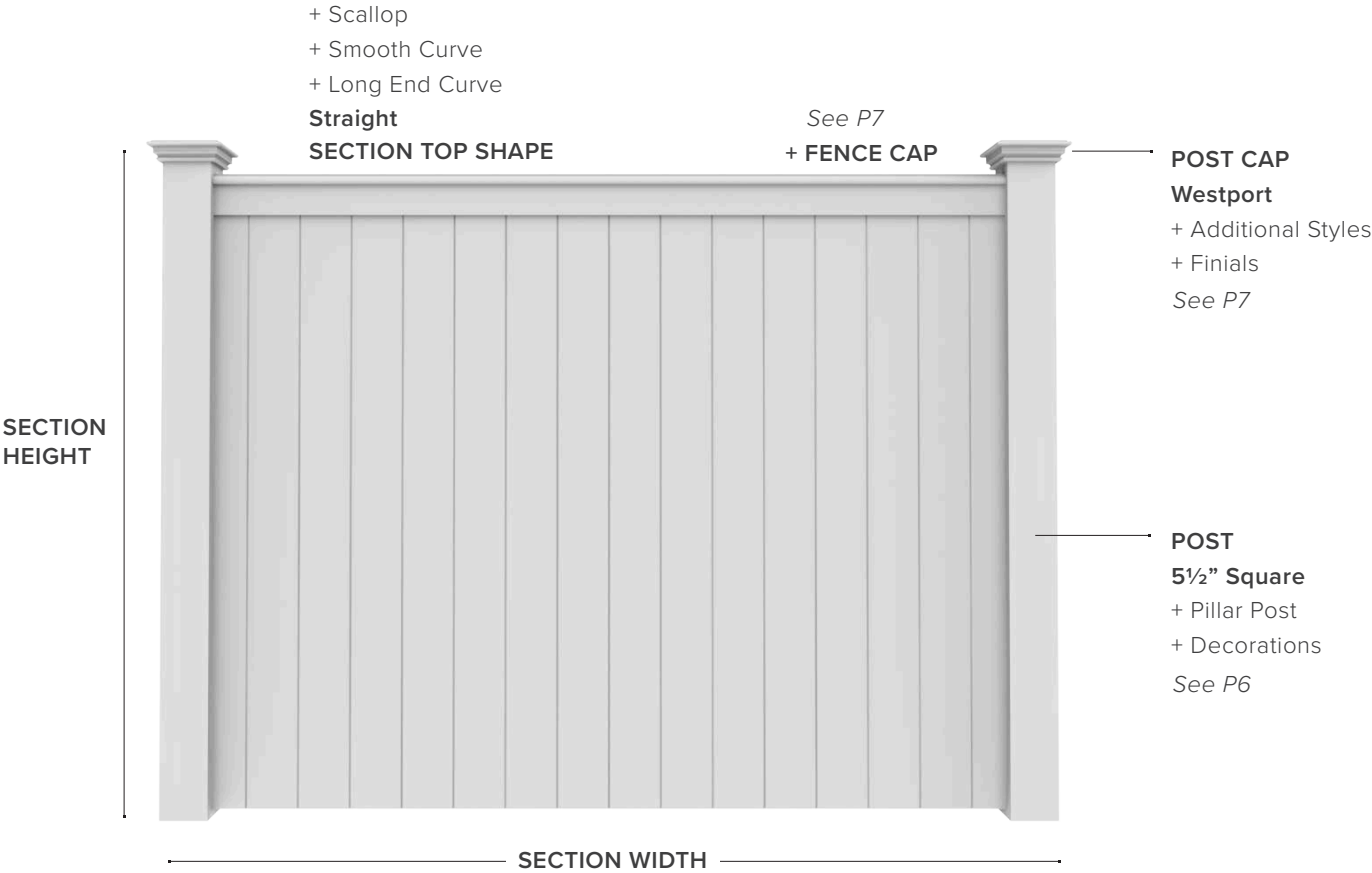
SCREEN FENCE



SCREEN FENCE FEATURES

Standard

+ Customization Option



SIZE & MATERIAL OPTIONS

SCREEN STYLE	SECTION HEIGHT						SECTION WIDTH			MATERIAL	
	3'	4'	4.5'	5'	6'	8'	4'	6'	8'	CPVC	Cedar
Chesapeake	○	●	●	●	●	○*	●	●	●	●	●
Horiz Universal		●	●	●	●		●	●	●	●	
Louvered		●		●	●		●	●	●	●	
Spaced Horizontal		●		●	●		●	●	●	●	
Universal		●	●	●	●	●*	●	●	●	●	●

* 8' H section available with 4'W or 6'W only

● Solid Cellular Vinyl only

○ Cedar only

SCREEN FENCE SIGNATURE STYLES

The screen fence provides a superb combination of privacy and security around a property or pool. These fences are solid, impressive, and built to stand the test of time. Designed with little or no space between their boards, the screen fence is an elegant and popular solution. With its clean lines and versatile style, it complements a wide range of architectural designs, from traditional to contemporary.

CHESAPEAKE

CEDAR

CPVC



HORIZONTAL UNIVERSAL

CPVC



LOUVERED

CPVC



SPACED HORIZONTAL

CPVC



UNIVERSAL

CEDAR

CPVC



SCREEN: **UNIVERSAL**

7518- CPVC 1018- Cedar

Connection:
Cleated



Straight Front
6'H shown

Front

Back

Back

SECTION SHAPES

GATE SHAPES



Back as
shown
above

Scallop



Back as
shown
above

Scallop



Back as
shown
above

Scallop



Arch



Annisquam Scallop



Annisquam Scallop



Smooth End Curve



Arch



Arch



Long End Curve



Annisquam Arch



Annisquam Arch



1



2



3



4

1 tepped Universal in Verde Green with Long End Curve 2 niversal with Single Gate in Functional Gray
3 niversal in Cedar (back shown) 4 Cedar Universal in Iron Ore stain

SCREEN: HORIZONTAL UNIVERSAL
7521- CPVC

Connection:
Cleated



Straight Front
6'H shown

Front

Back

Back

SECTION SHAPES



Back as
shown
above

Scallop



Arch



Smooth End Curve



Long End Curve

GATE SHAPES



Back as
shown
above

Scallop



Annisquam Scallop



Arch



Annisquam Arch



Back as
shown
above

Scallop



Annisquam Scallop



Arch



Annisquam Arch



1



2

1 Stepped Horizontal Universal in Iron Ore (back shown) 2 Horizontal Universal with single gate in Functional Gray

SCREEN: **CHESAPEAKE**

7520- CPVC 1016- Cedar

Connection:
Mortise & Tenon



Straight Front
6'H shown

Front

Back

Back

SECTION SHAPES

GATE SHAPES



Back as
shown
above

Scalloped



Back as
shown
above

Scalloped



Back as
shown
above

Scalloped



Arch



Annisquam Scalloped



Annisquam Scalloped



Smooth End Curve



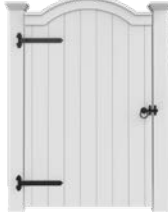
Arch



Arch



Long End Curve



Annisquam Arch



Annisquam Arch



1



2



3



4

1 Chesapeake painted Passive Gray with Scallop single gate (back shown) 2 Chesapeake with Annisquam Scallop single gate
3 Chesapeake with Annisquam Scallop single gate (back shown) 4 Cedar Chesapeake unstained (back shown)

SCREEN: **LOUVERED**
7532- CPVC

Connection:
Cleated



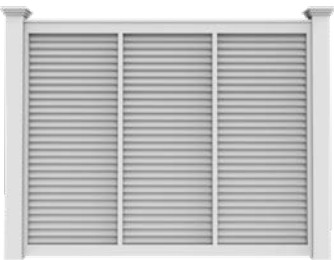
Straight Front
6'H shown

Front

Back

Back

SECTION SHAPES



Straight

Back as
shown
above

GATE SHAPES



Straight

Back as
shown
above



Straight

Back as
shown
above



1



2



3

1 Louvered with single gate painted Passive Gray 2 Louvered in Iron Ore 3 Louvered in White

SCREEN: **SPACED HORIZONTAL**
7522- CPVC

Connection:
Cleated



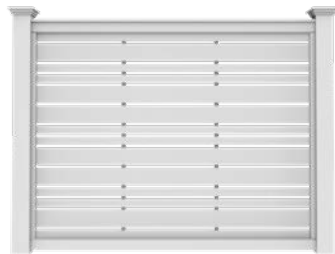
Straight Front
6'H shown

Front

Back

Back

SECTION SHAPES



Back as
shown
above

Straight

GATE SHAPES



Back as
shown
above

Straight



Back as
shown
above

Straight



1



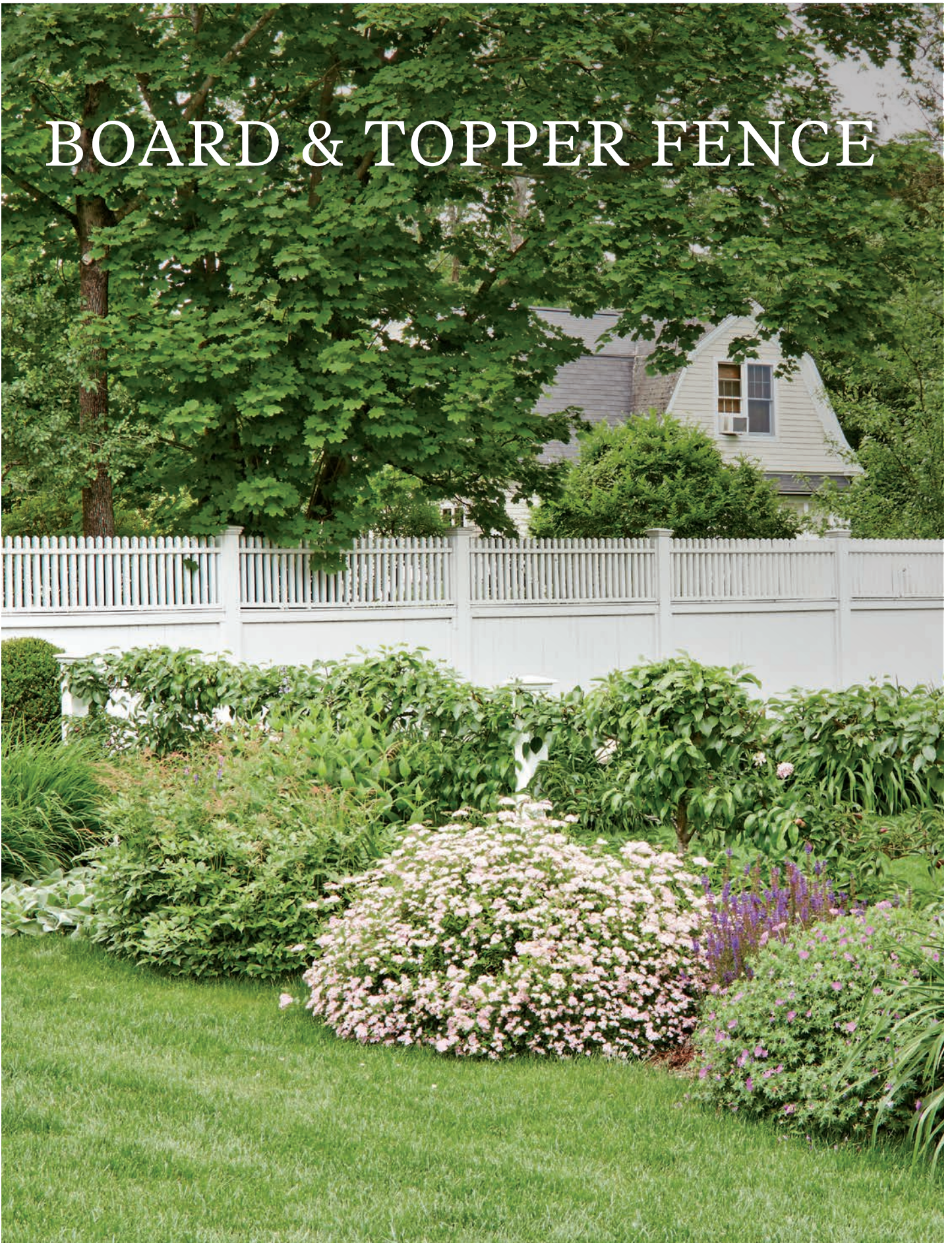
2



3

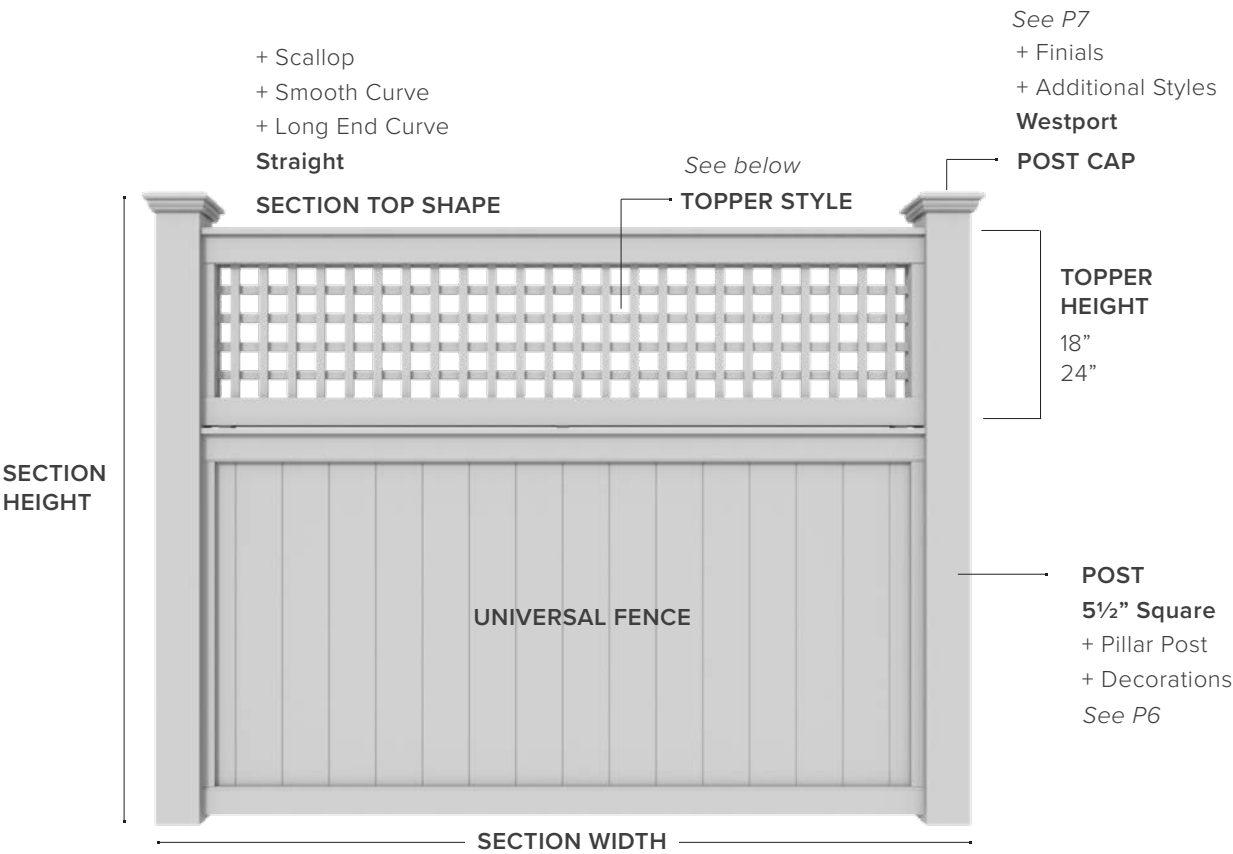
1 Spaced Horizontal in Functional Gray (back shown) 2 Spaced Horizontal 6'H in Iron Ore (back shown)
3 Spaced Horizontal with Single Gate in White (front shown)

BOARD & TOPPER FENCE



BOARD & TOPPER FENCE FEATURES

Standard
 + Customization Option



SIZE & MATERIAL OPTIONS

TOPPER STYLE	TOPPER HEIGHT		SECTION WIDTH				MATERIAL	
	18"	24"	4'	6'	8'	10'	CPVC	Cedar
Highland	●	●	●	●	●		●	●
Yorktown	●	●	●	●	●		●	●
1.5" Lattice (Diagonal, H/V)	●	●	●	●	●		●	●
2.5" Lattice (Diagonal, H/V)	●	●	●	●	●	●	●	●

● Solid Cellular Vinyl only

BOARD & TOPPER SIGNATURE STYLES

Board & Topper fences combine solid privacy with a sense of openness, thanks to their detailed, handcrafted toppers. These fences feature a Universal bottom and a variety of topper styles, allowing you to personalize the look to suit your taste and home.

1.5" HORIZONTAL-VERTICAL LATTICE TOPPER



2.5" HORIZONTAL-VERTICAL LATTICE TOPPER



HIGHLAND TOPPER



1.5" DIAGONAL LATTICE TOPPER

CEDAR CPVC



2.5" DIAGONAL LATTICE TOPPER

CEDAR CPVC



YORKTOWN TOPPER

CEDAR CPVC



BOARD & TOPPER: **HIGHLAND**

75TH- CPVC 10TH- Cedar

Connection:
Cleated



SECTION SHAPES



Scallop Pickets

Back as
shown
above



Scallop



Smooth End Curve 6" drop



12" drop



Long End Curve

GATE SHAPES



Scallop Pickets



Back as
shown
above



Scallop



Annisquam Scallop



Arch



Annisquam Arch





1 Highland Topper with straight top 2 Highland Topper with Scallop Pickets gate and sections 3 Highland Topper with straight sections and single gate 4 Highland Topper with Scallop Pickets gate and sections

BOARD & TOPPER: YORKTOWN

75TY- CPVC 10TY- Cedar

Connection:
Cleated



Straight Front

Front

Back

Back

SECTION SHAPES



Scallop

Back as
shown
above



Smooth End Curve 6" drop



12" drop



Long End Curve 6" drop



12" drop

GATE SHAPES



Scallop



Back as
shown
above



Annisquam Scallop



Arch



Annisquam Arch





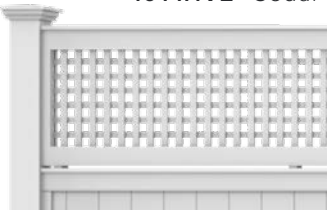
1 Yorktown Topper with straight sections 2 Yorktown Topper and Garden Arbor with Yorktown single gate
3 Yorktown Topper with Annisquam Scallop double gate

BOARD & TOPPER: 24" LATTICE TOPPER 2.5" HV Lattice shown

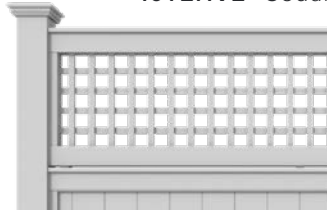


LATTICE TOPPER STYLES

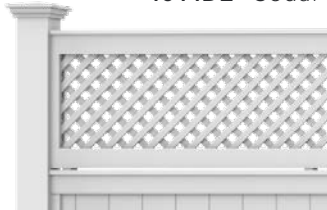
1.5" HV 75T1HV2- CPVC
10T1HV2- Cedar



2.5" HV 75T2HV2- CPVC
10T2HV2- Cedar



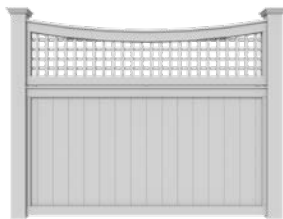
1.5" Diag 75T1D2- CPVC
10T1D2- Cedar



2.5" Diag 75T2D2- CPVC
10T2D2- Cedar

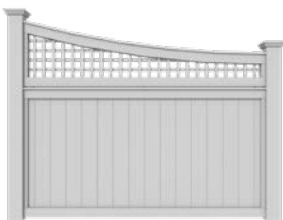


SECTION SHAPES

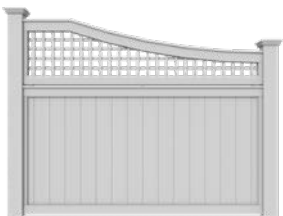


Scalloped

Back as
shown
above



Smooth End Curve

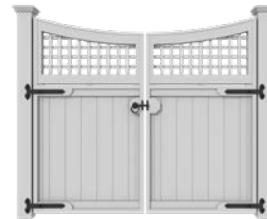


Long End Curve

GATE SHAPES



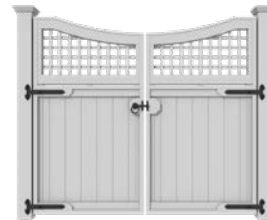
Scalloped



Back as
shown
above



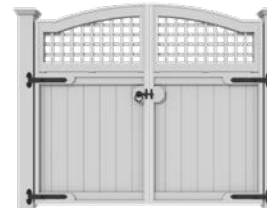
Annisquam Scalloped



Arched



Annisquam Arched



Section and Gate shapes shown on this page are available for all 24" Lattice Toppers styles.



1



2



3



4

1 24"H 2.5"-Horizontal Vertical Lattice Topper with Annisquam Scallop single gate (back shown) 2 24"H 2.5"-Diagonal Lattice Topper
3 24"H 2.5"-Diagonal Lattice Topper with Scallop gate 4 24"H 2.5"-Horizontal Vertical Lattice Topper with single gate (back shown)

BOARD & TOPPER: 18" LATTICE TOPPER

1.5" HV Lattice shown



Straight Front

Front

Back

Back

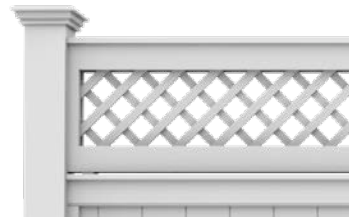
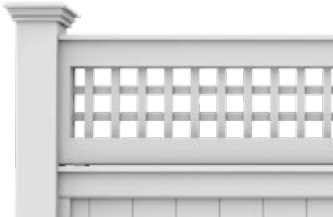
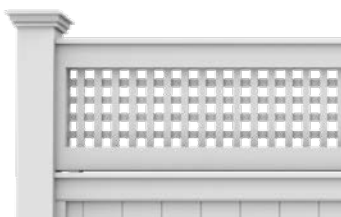
LATTICE TOPPER STYLES

1.5" HV 75T1HV15- CPVC
10T1HV15- Cedar

2.5" HV 75T2HV15- CPVC
10T2HV15- Cedar

1.5" Diag 75T1D15- CPVC
10T1D15- Cedar

2.5" Diag 75T2D15- CPVC
10T2D15- Cedar

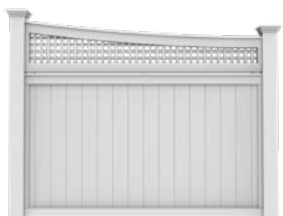


SECTION SHAPES

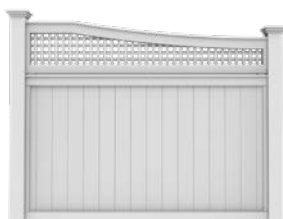


Scallop

Back as
shown
above



Smooth End Curve



Long End Curve

Section and Gate shapes shown
on this page are available for all
18" Lattice Topper styles.

GATE SHAPES



Scallop



Back as
shown
above



Annisquam Scallop

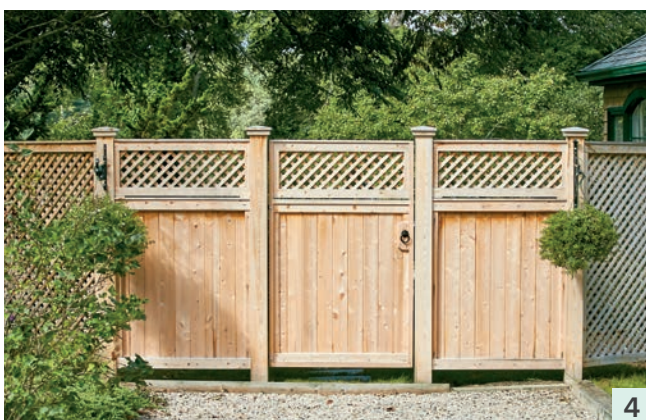
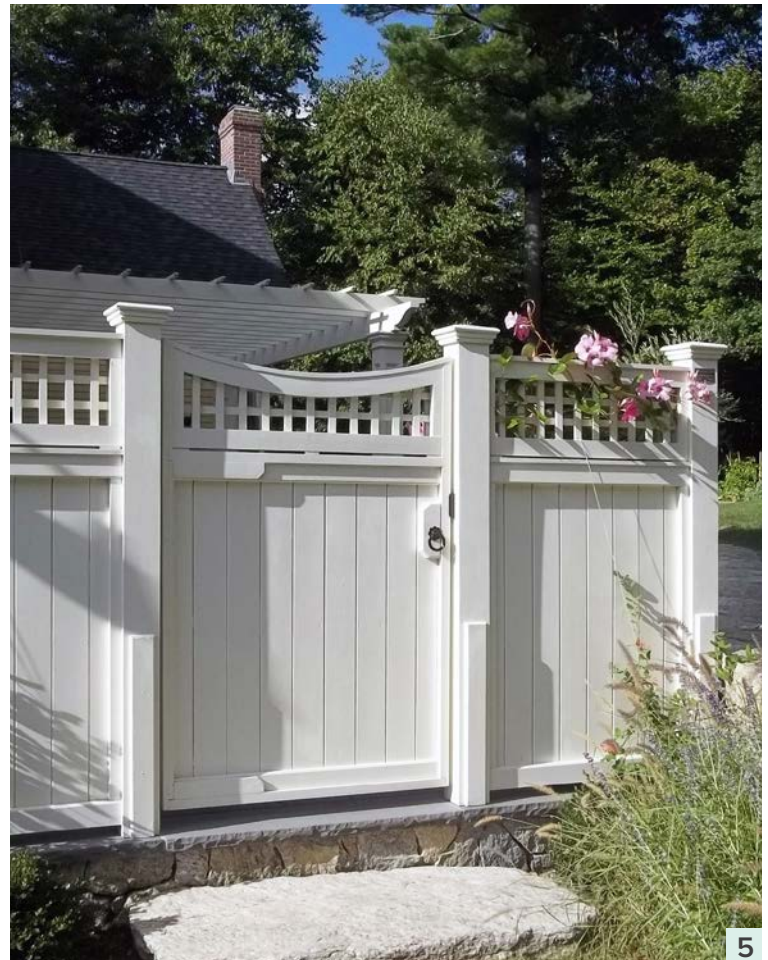
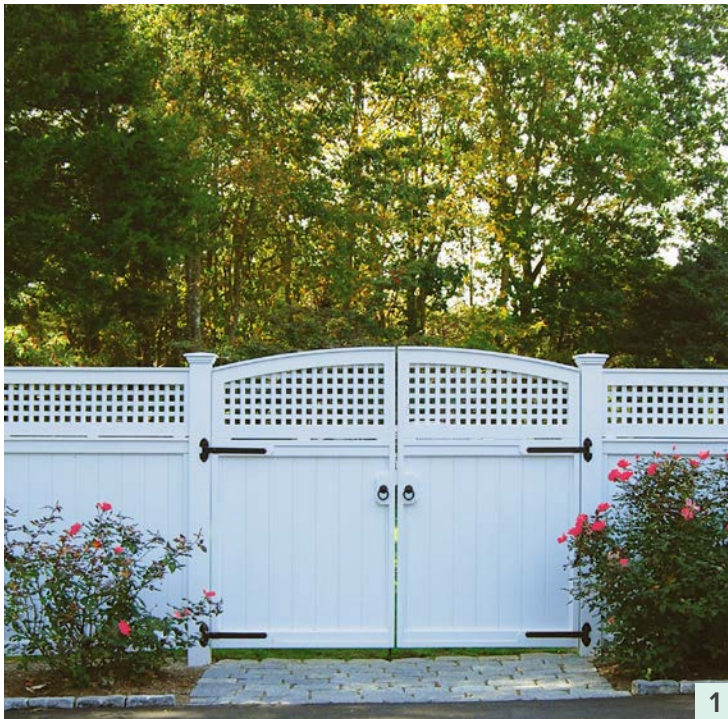


Arch



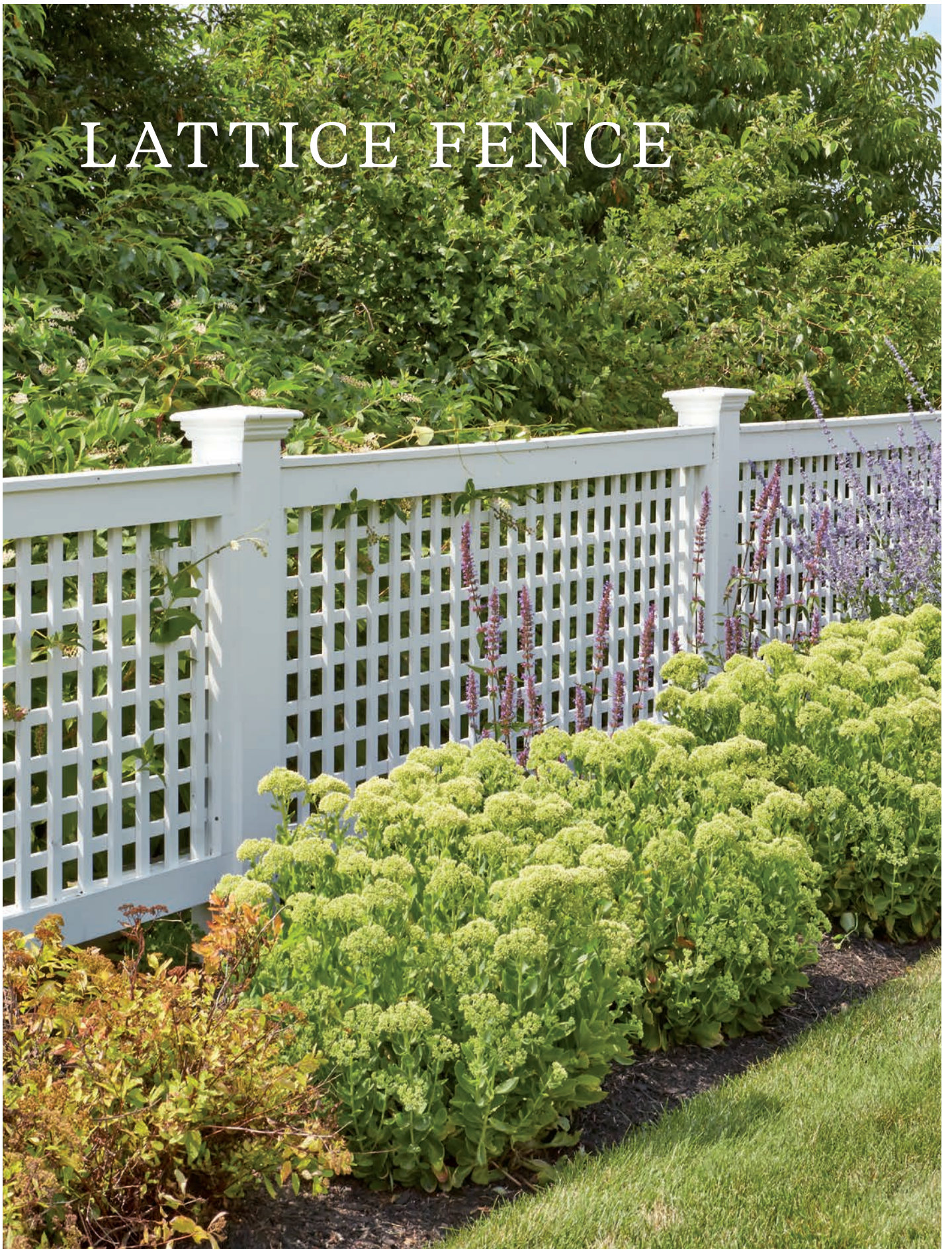
Annisquam Arch





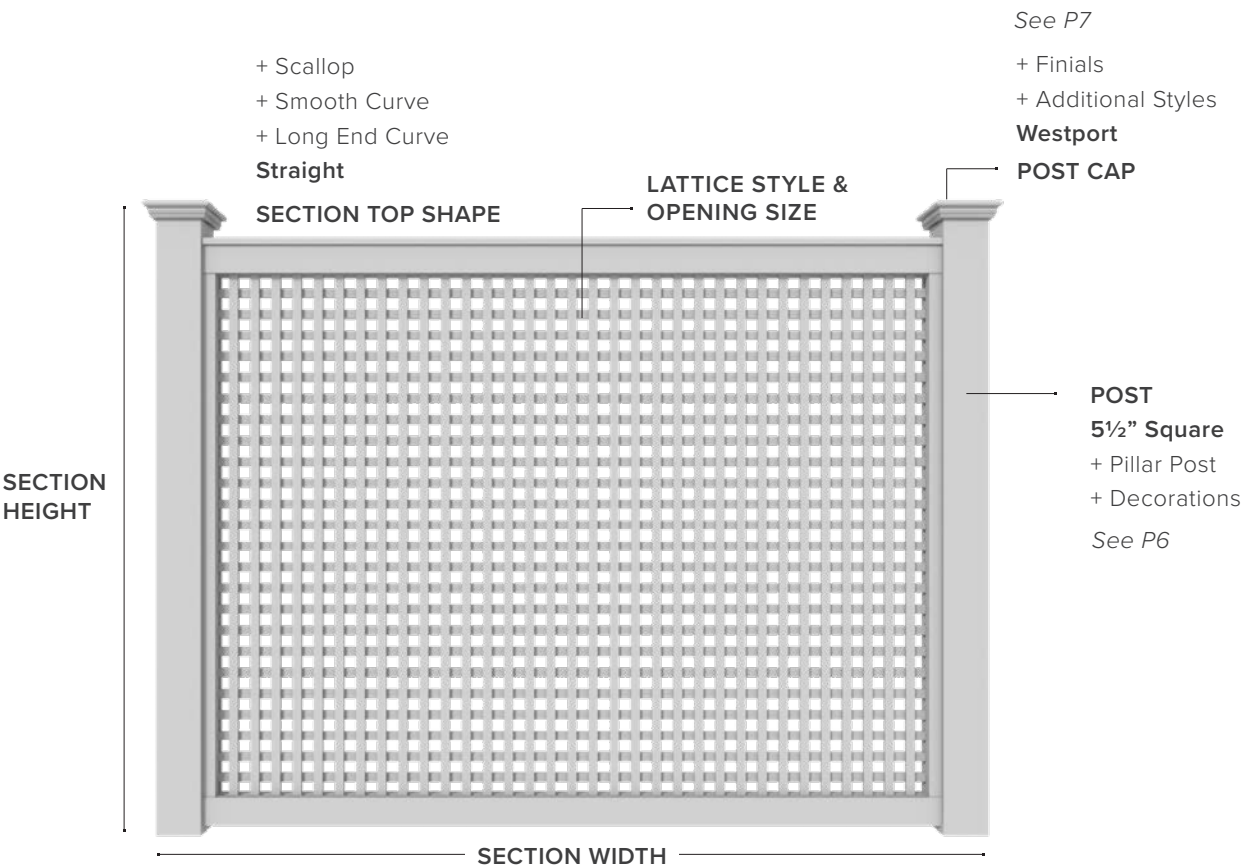
1 1.5"-Horizontal Vertical 18"H Lattice Topper with Arch double gate 2 18"H 2.5"-Diagonal Lattice Topper with Annisquam Scallop gate (back shown) 3 18"H 2.5"-Horizontal Vertical Lattice Topper 4 Cedar 1.5"-Diagonal 18"H Lattice Topper with Single Gate 5 18"H 2.5"-Horizontal Vertical Lattice Topper 18" with Scallop single gate

LATTICE FENCE



LATTICE FENCE FEATURES

Standard
 + Customization Option



SIZE & MATERIAL OPTIONS

LATTICE STYLE	SECTION HEIGHT					SECTION WIDTH				MATERIAL	
	3.5'	4'	5'	6'	8'	4'	6'	8'	10'	CPVC	Cedar
1.5" Diagonal	●	●	●	●	●*	●	●	●	●	●	●
2.5" Diagonal	●	●	●	●	●*	●	●	●	●	●	●
5" Diagonal	●	●	●	●	●*	●	●	●	●	●	●
1.5" Horiz/Vert	●	●	●	●	●*	●	●	●	●	●	●
2.5" Horiz/Vert	●	●	●	●	●*	●	●	●	●	●	●
5" Horiz/Vert	●	●	●	●	●*	●	●	●	●	●	●

* 8' H section available with 4'W or 6'W only.

● Solid Cellular Vinyl only

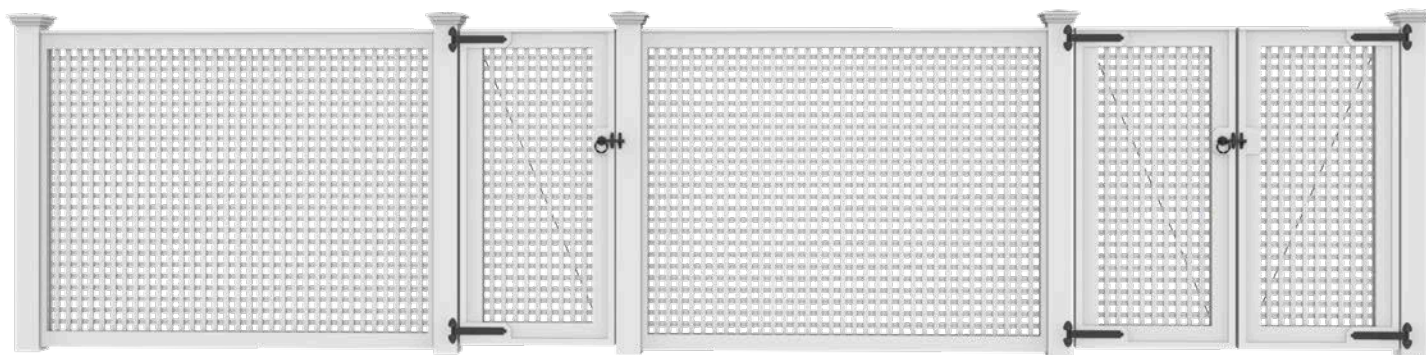
LATTICE FENCE SIGNATURE STYLES

With its neatly woven straight lines—available in horizontal-vertical or diagonal patterns—lattice has an appealing depth perspective and a subtle degree of privacy. Customers love the charming look of lattice for its light, airy feel and the way it blends seamlessly into garden landscapes.

1.5" HORIZONTAL-VERTICAL LATTICE

CEDAR

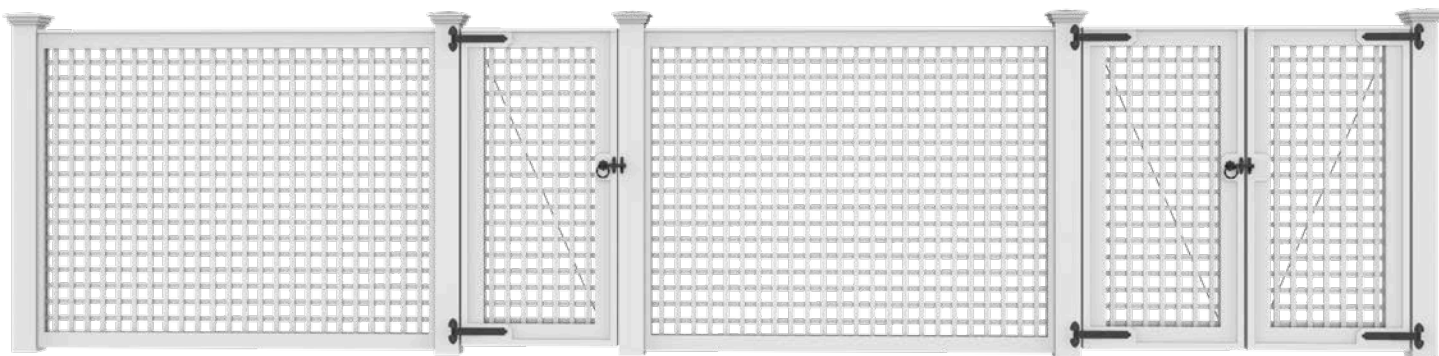
CPVC



2.5" HORIZONTAL-VERTICAL LATTICE

CEDAR

CPVC



5" HORIZONTAL-VERTICAL LATTICE

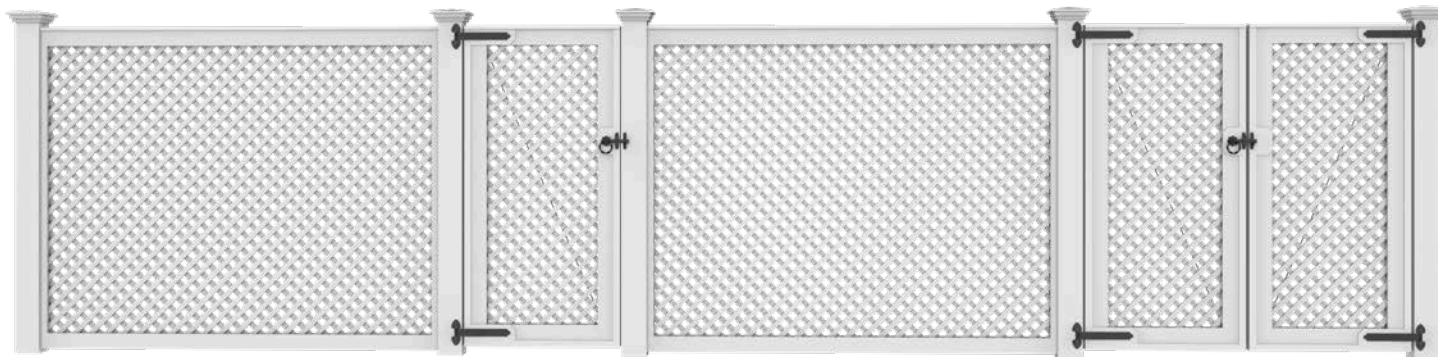
CEDAR

CPVC



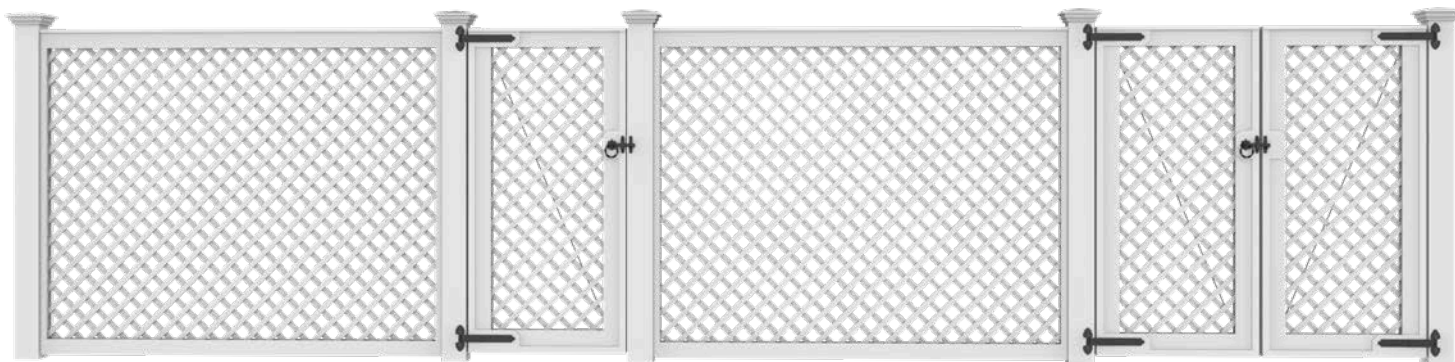
1.5" DIAGONAL LATTICE

CEDAR CPVC



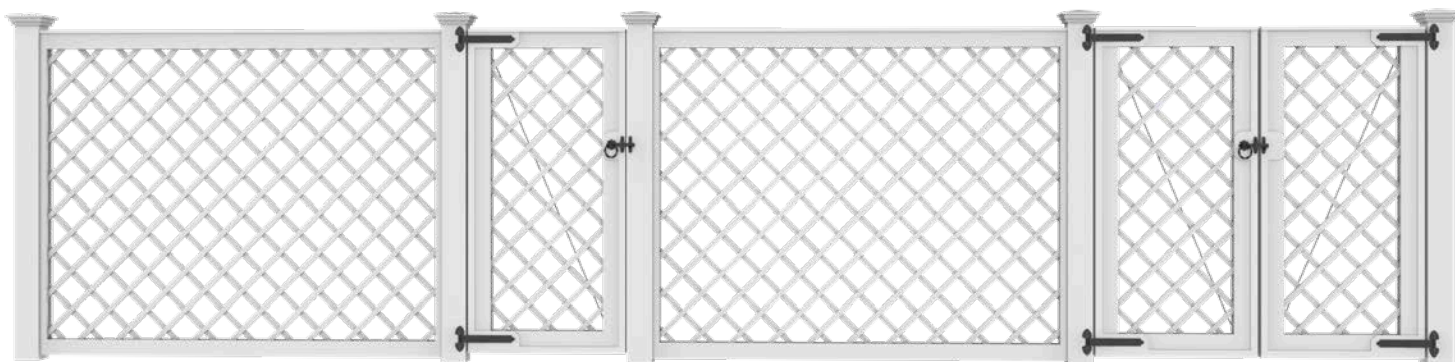
2.5" DIAGONAL LATTICE

CEDAR CPVC



5" DIAGONAL LATTICE

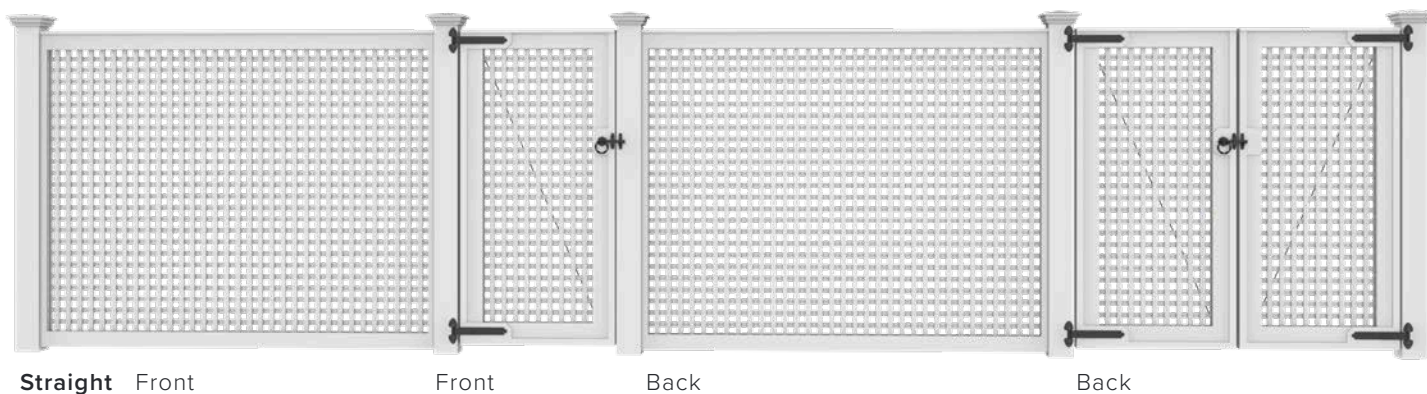
CEDAR CPVC



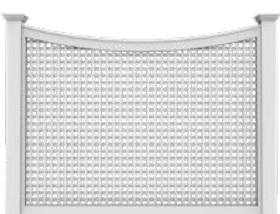
LATTICE: 1.5" HORIZONTAL VERTICAL

75301HV- CPVC 10301HV- Cedar

Connection:
Cleated

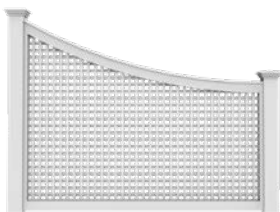


SECTION SHAPES

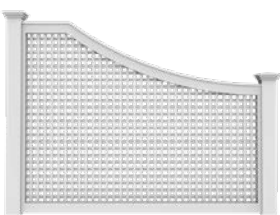


Scalloped

Back as
shown
above



Smooth End Curve

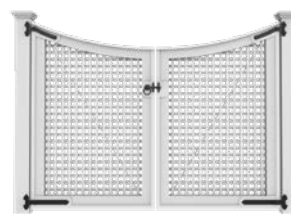


Long End Curve

GATE SHAPES



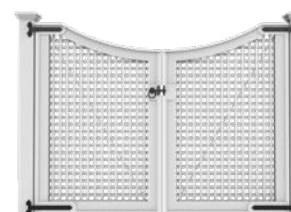
Scalloped



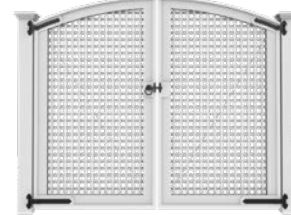
Back as
shown
above



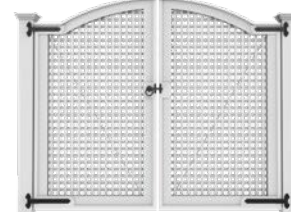
Annisquam Scalloped

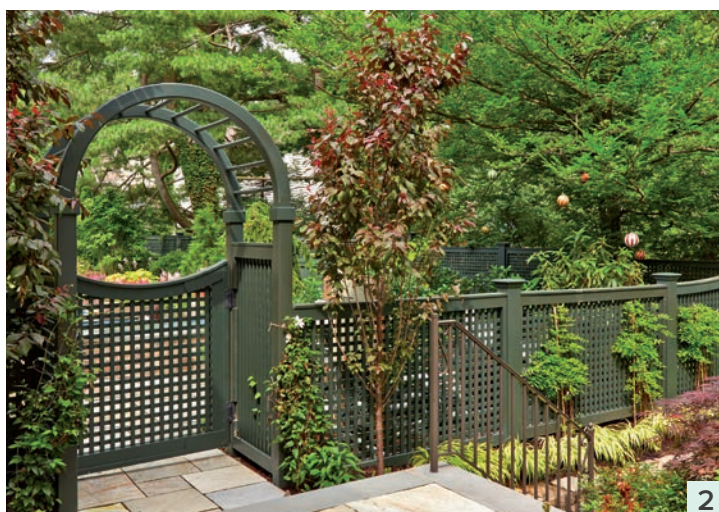


Arched



Annisquam Arched



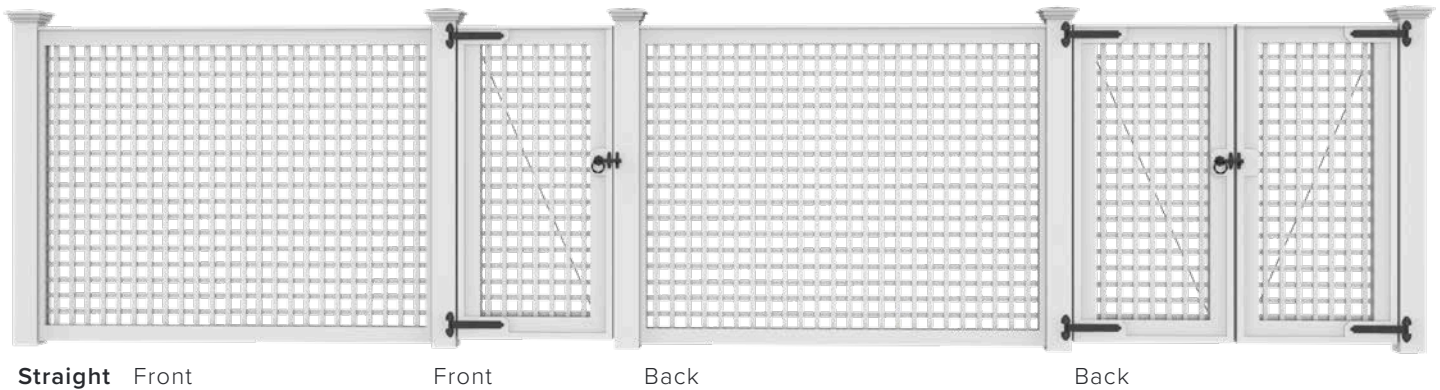


1 1.5HV Lattice with Long End Curve sections at Annisquam Scallop double gate and Spindle Top Arbor **2** 1.5HV Lattice in Verde Green with Scallop single gate and Spindle Top Arbor **3** 1.5HV Lattice with straight sections and double gate **4** 1.5HV Lattice in Verde Green on stone wall

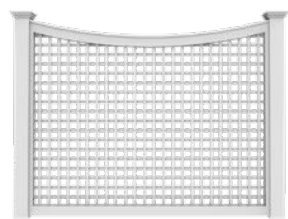
LATTICE: 2.5" HORIZONTAL VERTICAL

75302HV- CPVC 10302HV- Cedar

Connection:
Cleated

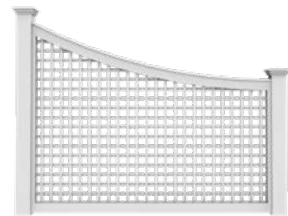


SECTION SHAPES

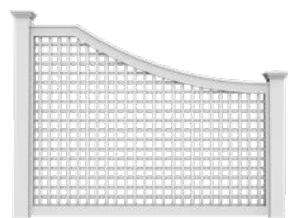


Scallop

Back as
shown
above



Smooth End Curve

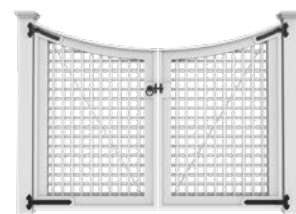


Long End Curve

GATE SHAPES



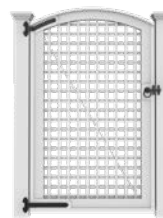
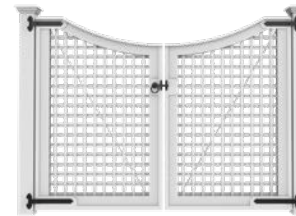
Scallop



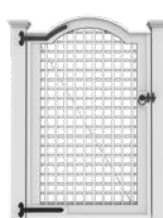
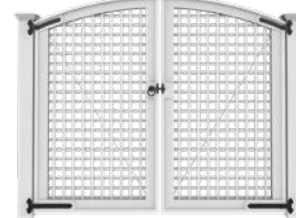
Back as
shown
above



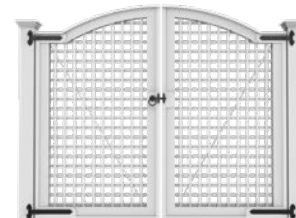
Annisquam Scallop



Arch



Annisquam Arch



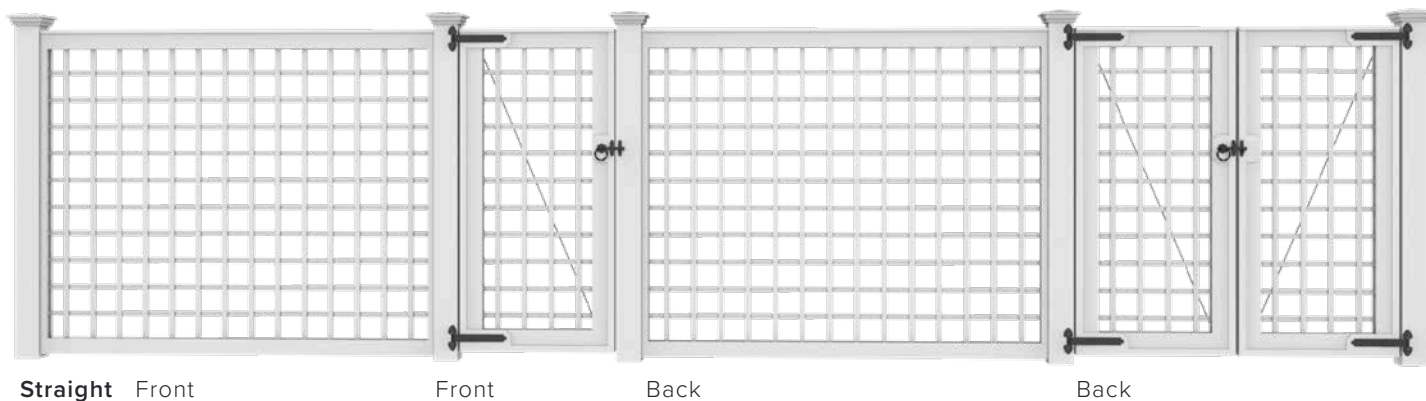


1 2.5HV Lattice fence with straight top 2 2.5HV fence and Scallop single gate with Sphere finials 3 2.5HV Lattice fence with Long End Curves at Spindle Top Arbor with Hampton Double Gate 4 2.5HV stepped Lattice fence along stone wall

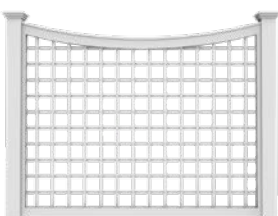
LATTICE: 5" HORIZONTAL VERTICAL

75305HV- CPVC 10305HV- Cedar

Connection:
Cleated

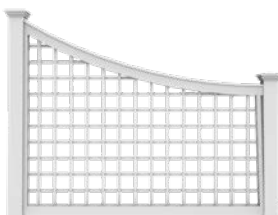


SECTION SHAPES

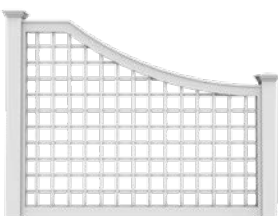


Scallop

Back as
shown
above



Smooth End Curve

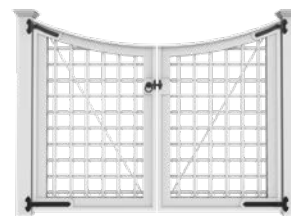


Long End Curve

GATE SHAPES



Scallop



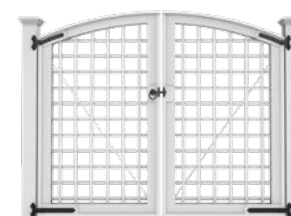
Back as
shown
above



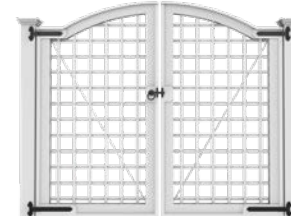
Annisquam Scallop



Arch



Annisquam Arch



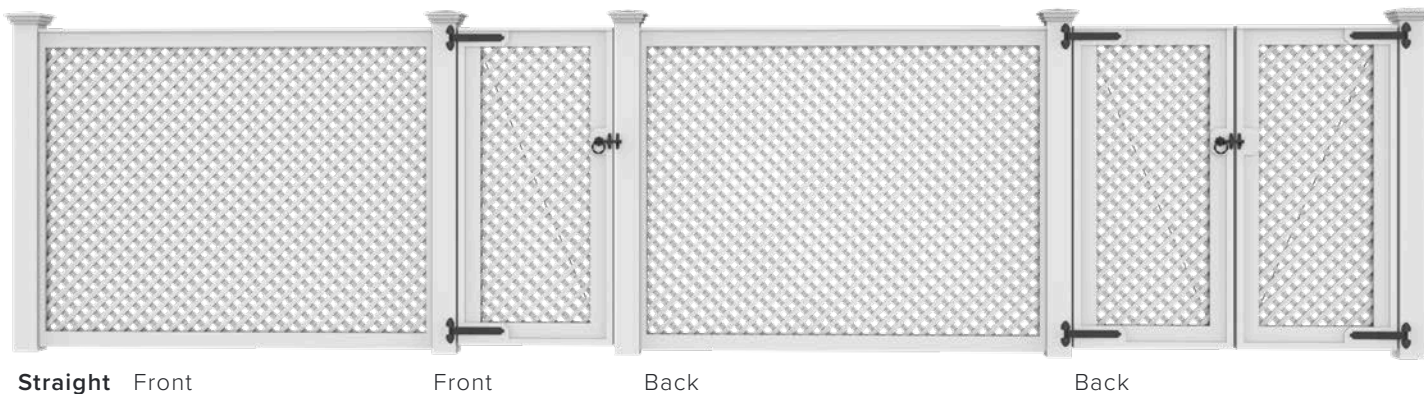


1 5HV Lattice with Long End Curves and custom double gate with custom arbor 2 Cedar 5HV Lattice Fence with Colonial post caps stained White 3 5HV Lattice with Annisquam Scallop double gate and Secret Garden Arbor
4 5HV Lattice with Bevel post caps and single gate

LATTICE: 1.5" DIAGONAL

75301D- CPVC 10301D- Cedar

Connection:
Cleated

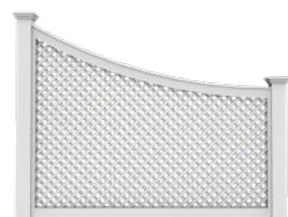


SECTION SHAPES

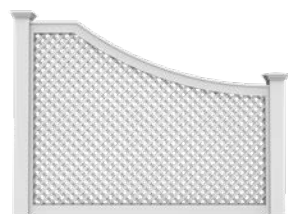


Scallop

Back as
shown
above



Smooth End Curve



Long End Curve

GATE SHAPES



Scallop



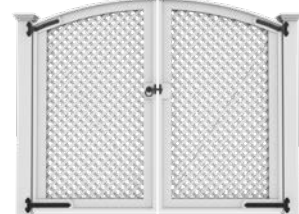
Back as
shown
above



Annisquam Scallop



Arch



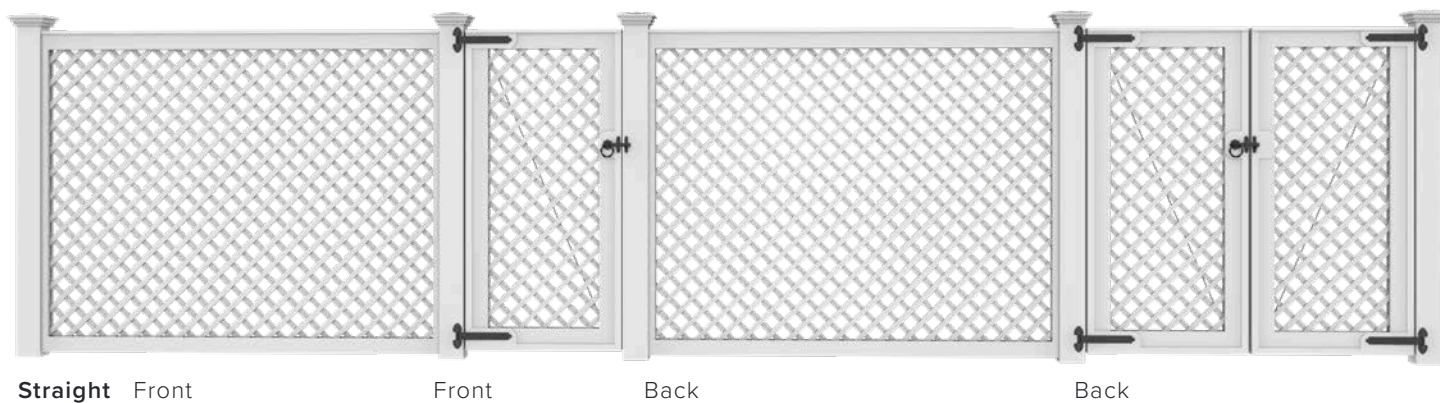
Annisquam Arch



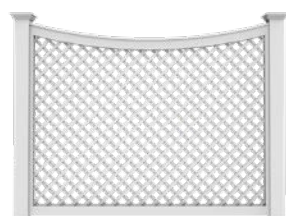
LATTICE: 2.5" DIAGONAL

75302D- CPVC 10302D- Cedar

Connection:
Cleated

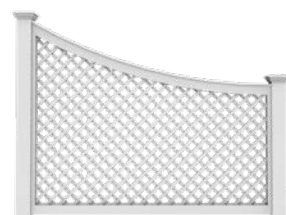


SECTION SHAPES

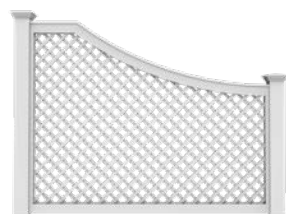


Scalloped

Back as
shown
above



Smooth End Curve

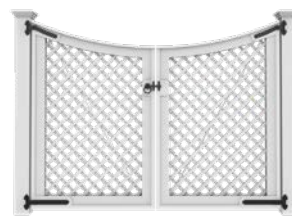


Long End Curve

GATE SHAPES



Scalloped



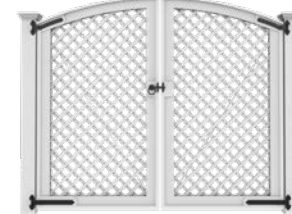
Back as
shown
above



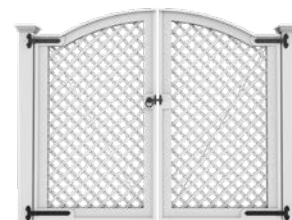
Annisquam Scalloped



Arch



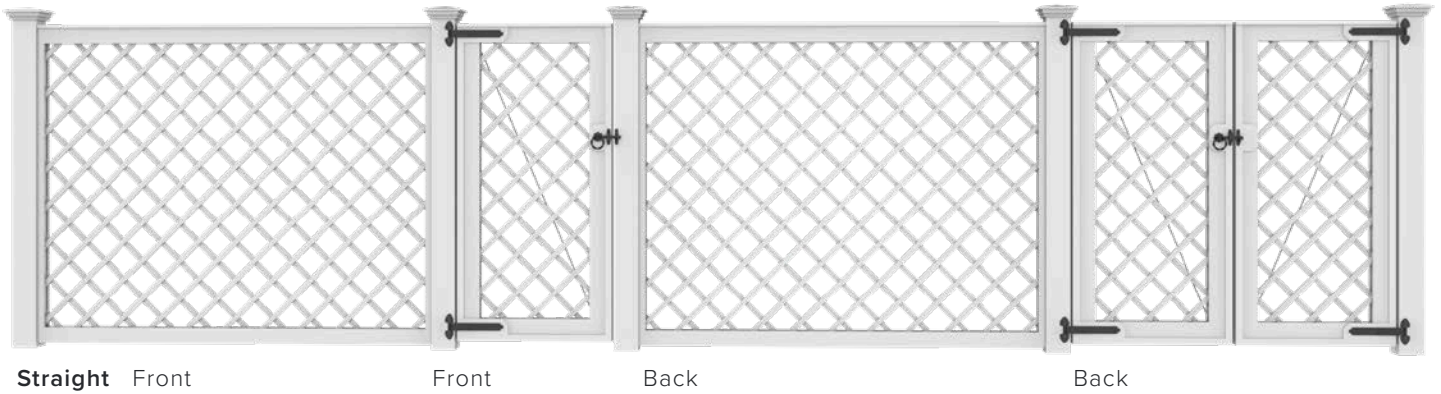
Annisquam Arch



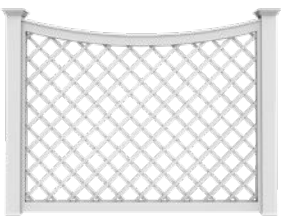
LATTICE: 5" DIAGONAL

75305D- CPVC 10305D- Cedar

Connection:
Cleated

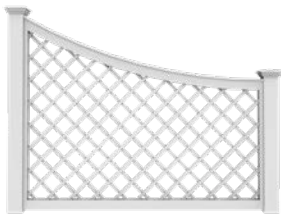


SECTION SHAPES

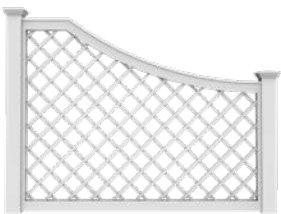


Scallop

Back as
shown
above



Smooth End Curve



Long End Curve

GATE SHAPES



Scallop



Back as
shown
above



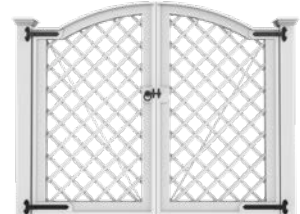
Annisquam Scallop

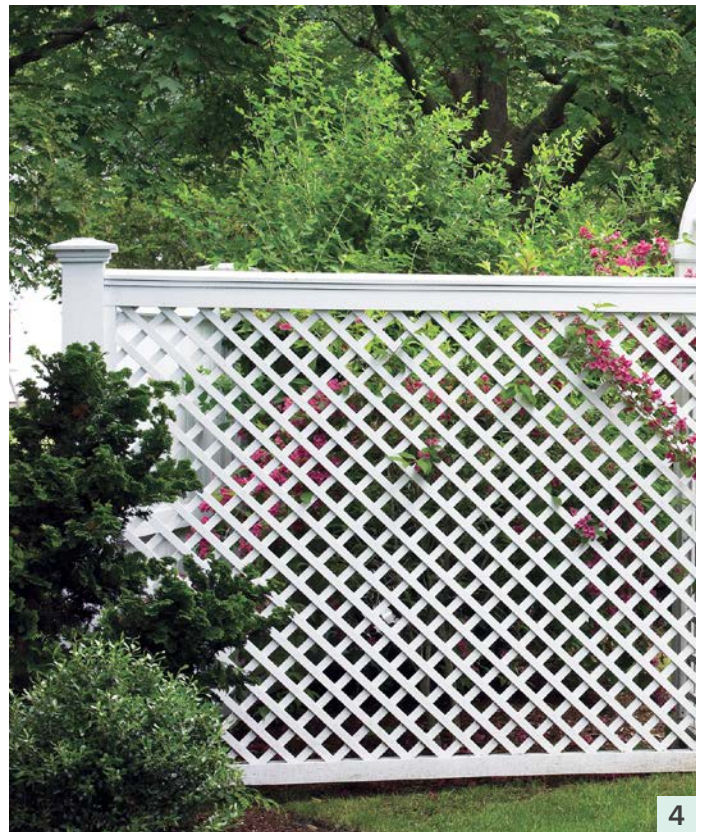


Arch

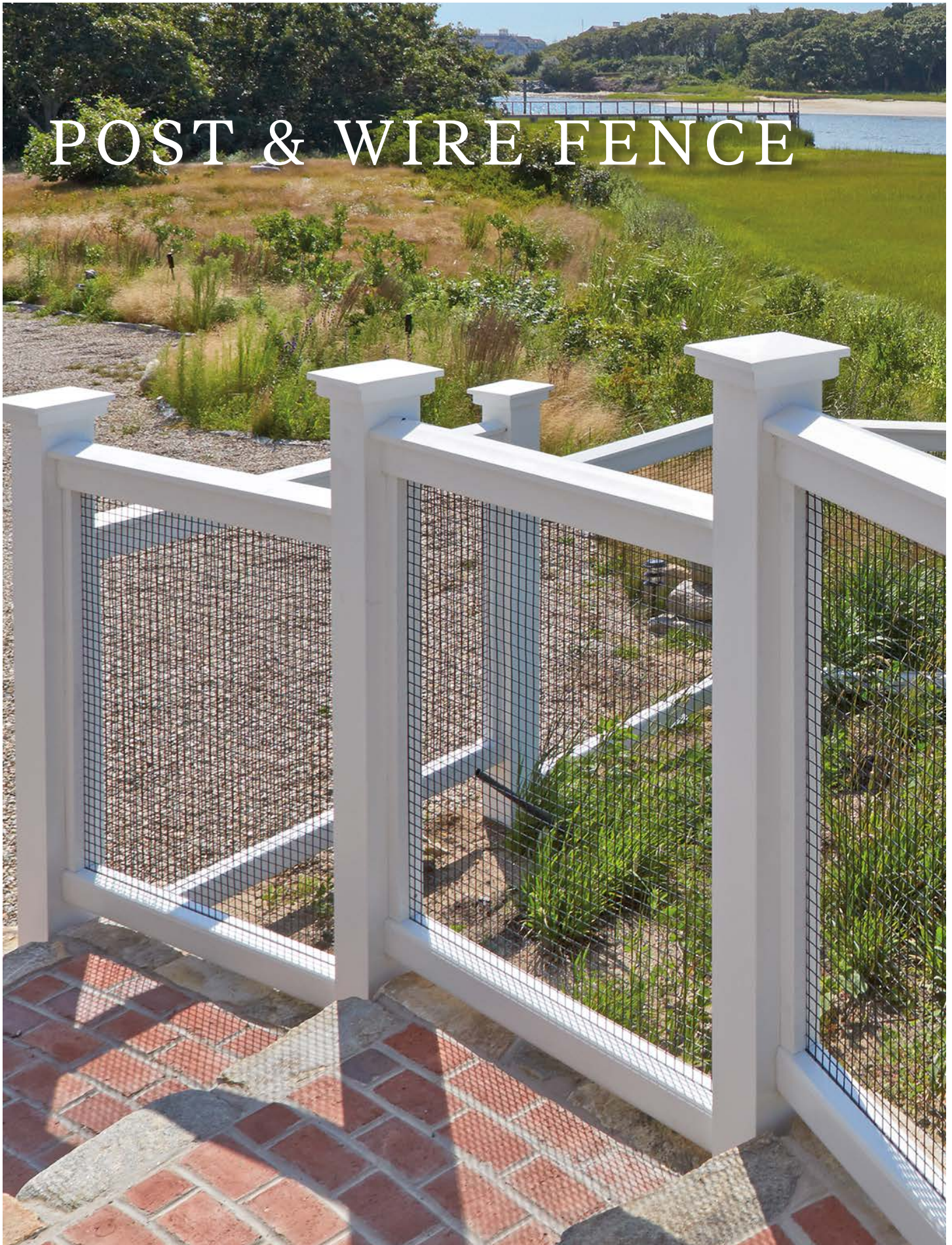


Annisquam Arch



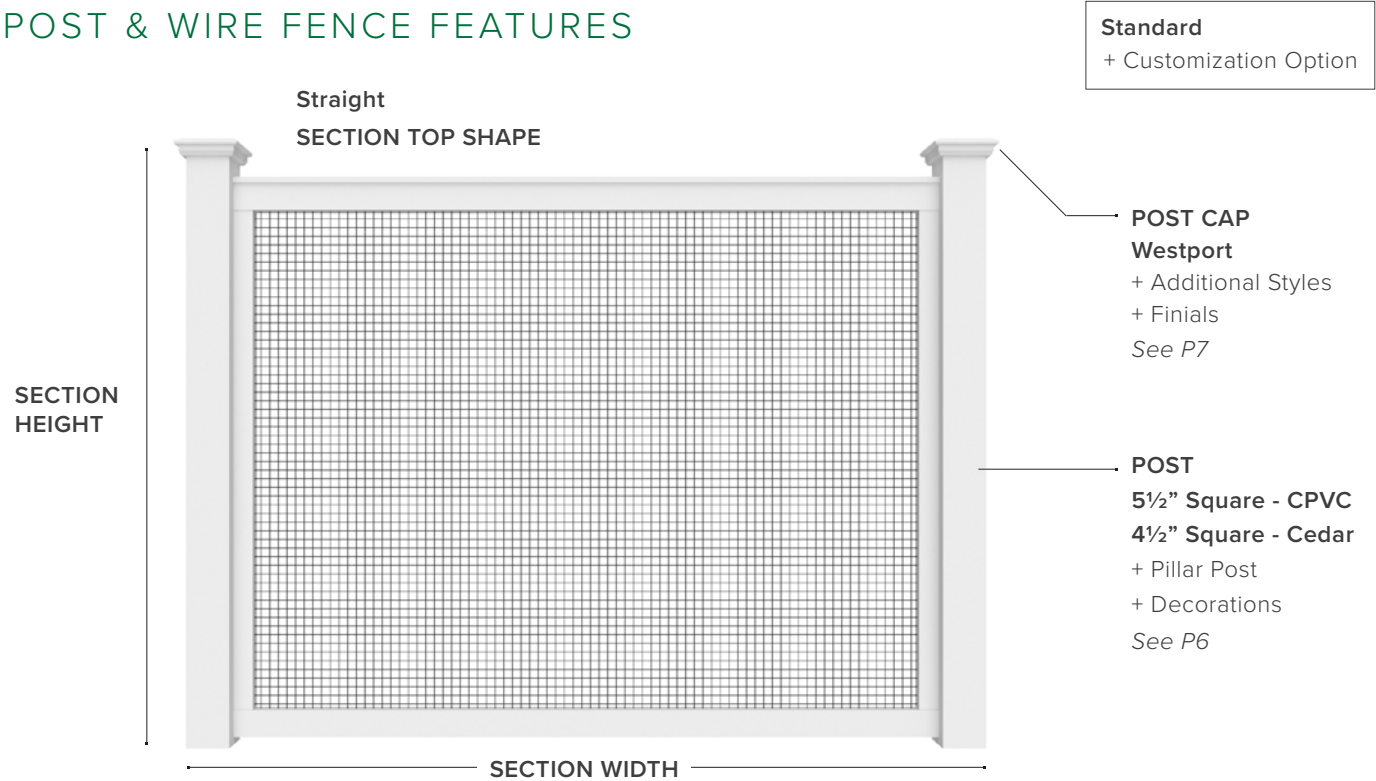


1 2.5" Diagonal Lattice with Spindle Top Arbor over Scallop single gate 2 Cedar 1.5" Diagonal Lattice stained Verde Green with Contemporary post caps 3 1.5" Diagonal Lattice with Arch double gate 4 2.5" Diagonal Lattice



POST & WIRE FENCE

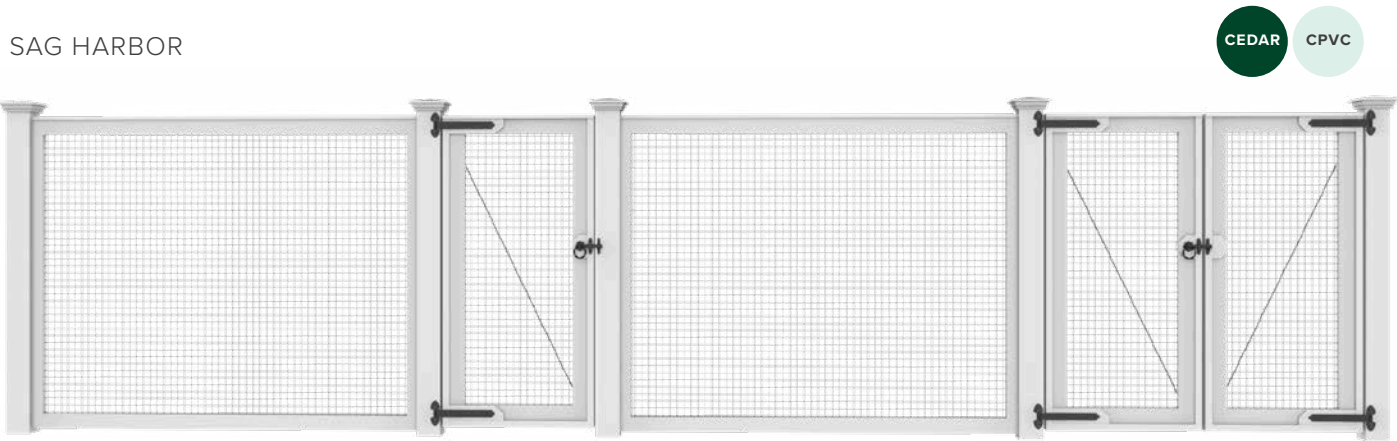
POST & WIRE FENCE FEATURES



SIGNATURE STYLE

A mesh fence with panel sections that are cleated and fastened securely to its posts, the Sag Harbor has sleek lines and contemporary framing. Durable and minimal, the mesh design allows for clear views of the landscape while still defining the space.

SAG HARBOR



SIZE & MATERIAL OPTIONS

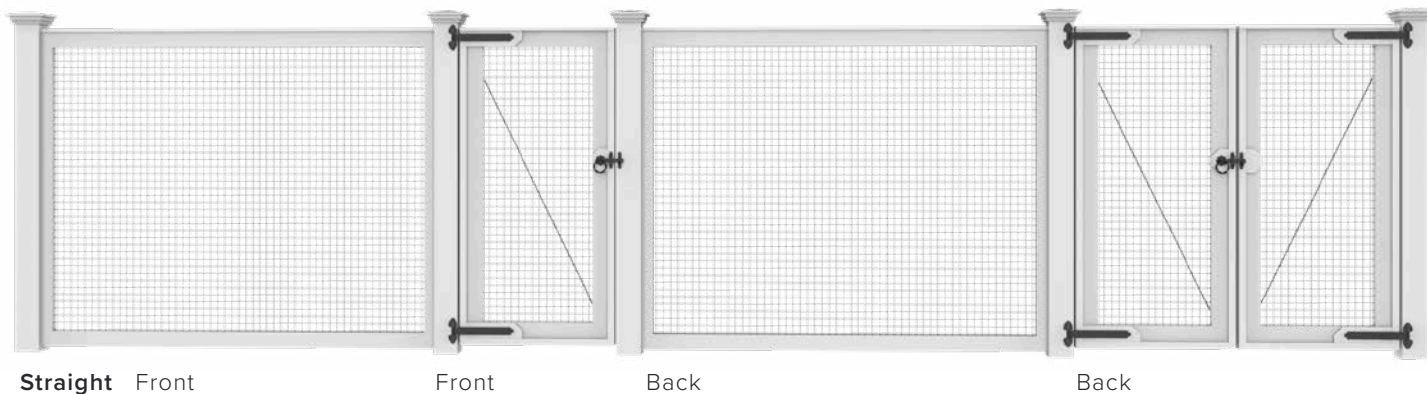
FENCE TYPE	SECTION HEIGHT					SECTION WIDTH			MATERIAL	
	3'	3.5'	4'	5'	6'	4'	6'	8'	CPVC	Cedar
Sag Harbor	○	●	●	●	●	●	●	●	●	●

○ Cedar only

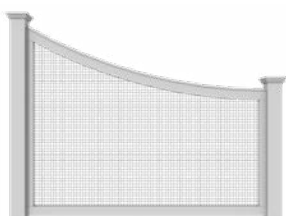
POST & WIRE: SAG HARBOR

7531- CPVC 1031- Cedar

Connection:
Cleated

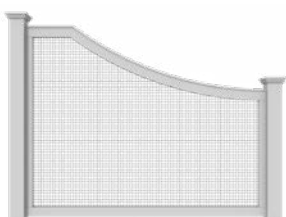


SECTION SHAPES



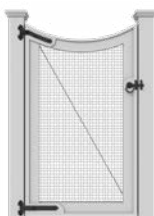
Smooth End Curve

Back as
shown
above

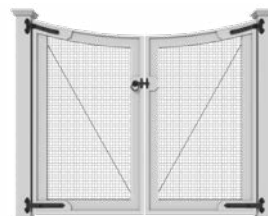


Long End Curve

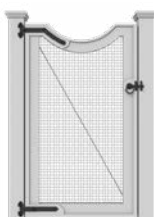
GATE SHAPES



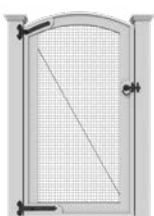
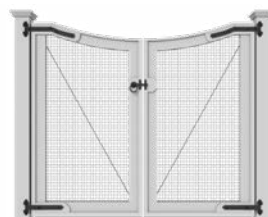
Scallop



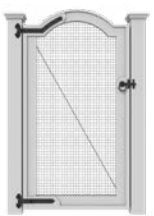
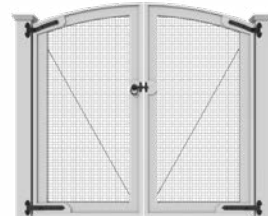
Back as
shown
above



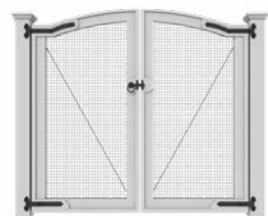
Annisquam Scallop



Arch



Annisquam Arch





1



2



4



3



5

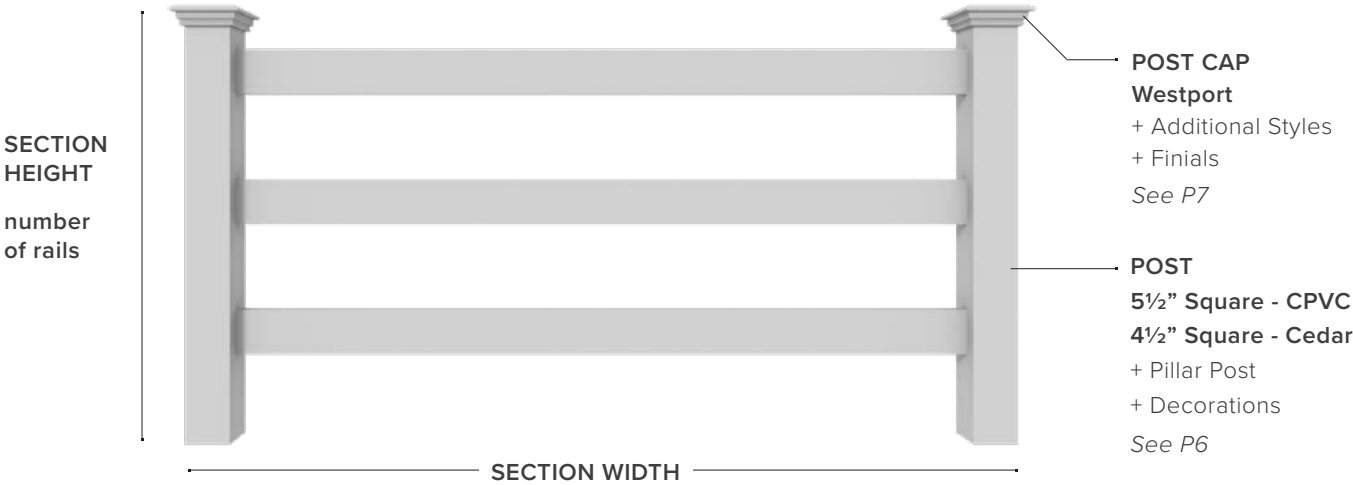
1 Sag Harbor in Iron Ore with Sunburst Wire double gate 2 Cedar Sag Harbor with single gate 3 Sag Harbor perimeter fence with double gate 4 Sag Harbor with Annisquam Arch double gate 5 Stepped Sag Harbor

POST & RAIL FENCE



POST & RAIL FENCE FEATURES

Standard
+ Customization Option

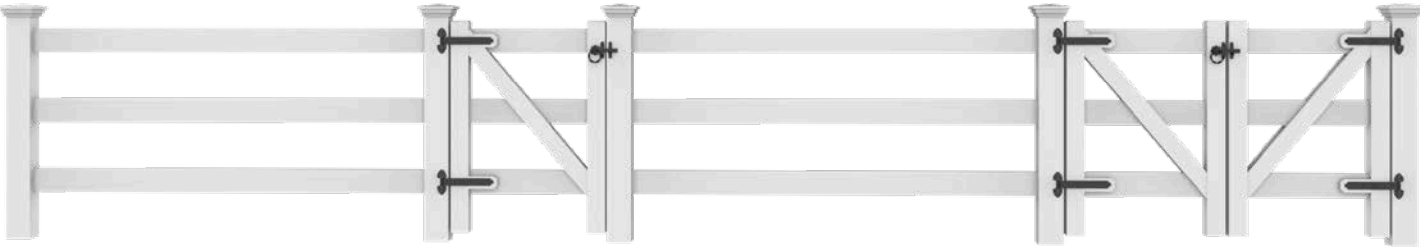


SIGNATURE STYLE

The simple elegance of a Post & Rail fence makes it a great choice for marking the boundaries of a property or containing horses and livestock. It looks friendly and welcoming, while still allowing open views. This fence style is comprised of vertical posts that stand perpendicular to two or more attached horizontal rails.

MORGAN

CEDAR CPVC



SIZE & MATERIAL OPTIONS

POST & RAIL STYLE	SECTION HEIGHT					SECTION WIDTH			MATERIAL	
	3'	3.5'	4'	5'	5'	4'	6'	8'	CPVC	Cedar
	2R	3R	3R	3R	4R					
Morgan	●	●	●	●	●	●	●	●	●	●

● Solid Cellular Vinyl only
R Railing

POST & RAIL: MORGAN

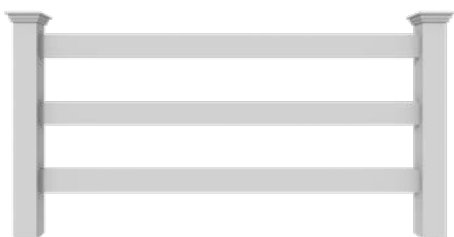
7552- CPVC 1052- Cedar



Front and Back

Rails 1½" x 5½"

SECTION SHAPES



Straight

3-Rail for heights over 3.5'



2-Rail for 3' H

GATE SHAPES



Straight



Farm

Double Gates only



1



2



4



3



5

1 3-Rail Morgan perimeter fence 2 3-Rail Morgan with single gate 3 2-Rail Morgan with double gate 4 3-Rail Morgan
5 3-Rail Morgan and double gate with Sheffield Arbor



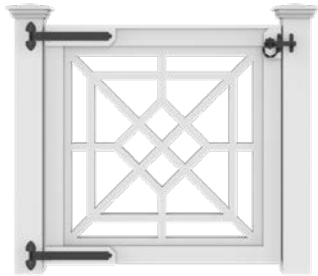
Lattice Topper fence customized with a Scallop double gate and Brookfield Arbor

ADD-ON DESIGN OPTIONS

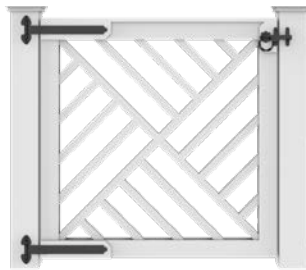
In addition to the design customizations shown on the previous pages, our Signature fence styles can also be customized with Premium Walk Gate designs and/or the addition of an Arbor over a fence gate.

PREMIUM WALK GATES

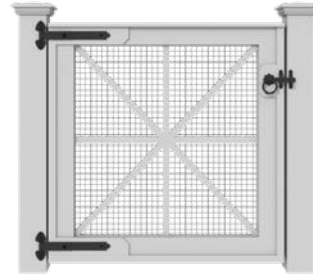
Shown below is a selection of our most popular premium walk gate styles that can be added to most fence designs. Please refer to the **Walk Gate Product Guide** for a comprehensive listing of all styles and sizes.



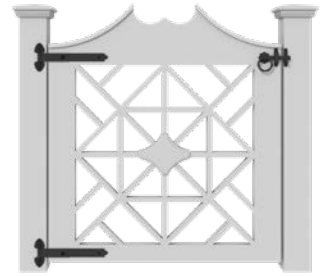
CHIPPENDALE
STAR



CHIPPENDALE



SUNBURST



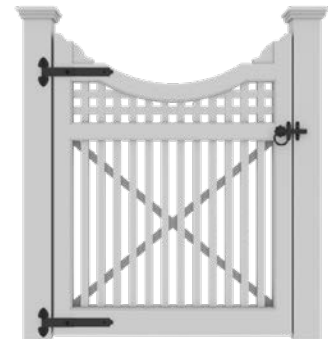
BRISTOL



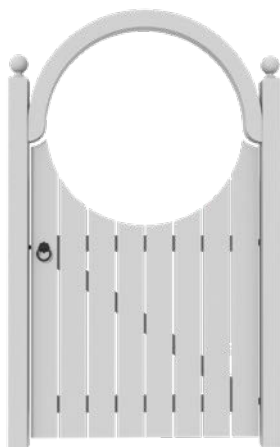
CHELSEA PICKET



FAIRVIEW



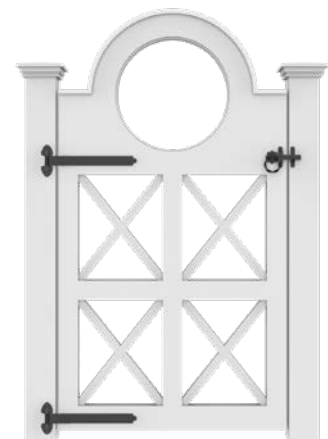
HAMPTON



BASKING RIDGE



SEAVIEW



PORTHOLE

ARBORS

Shown below is a selection of our most popular Arbor styles that can be added to most fence gates. Please refer to the **Arbor Product Guide** for a comprehensive listing of all Arbor styles and sizes.



ARCHED ARBOR

4.5' W shown



SPINDLE TOP ARBOR

4.5' W shown



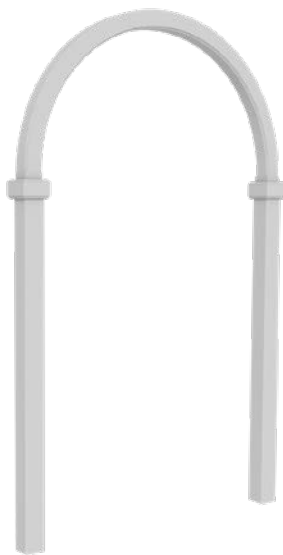
GARDEN ARBOR

4' W shown



BROOKFIELD ARBOR

4' W shown



SINGLE ARCH ARBOR

4.5' W shown



SHEFFIELD ARBOR

6' W shown



1



3



2



4



5

1 Sudbury fence with Spindle Top Arbor 2 Chestnut Hill fence with Chippendale Star gate and Wenham pillar posts
3 Sag Harbor fence with Sunburst Wire double gate 4 Chestnut Hill fence with Garden Arbor 5 2.5HV Lattice fence and Porthole Gate with Sphere finials



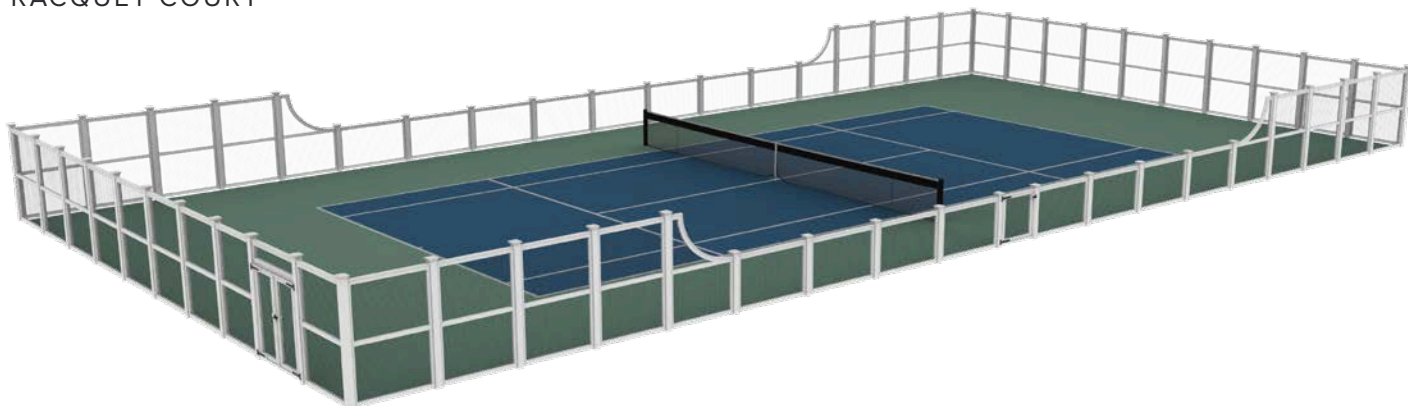
Aquidneck Racquet Court Enclosure

ADDITIONAL FENCE APPLICATIONS

Featured on the previous pages of this guide is our full range of signature perimeter fence styles. Walpole Outdoors also offers a variety of additional fence applications to enclose pools, racquet courts, gardens, and utilities. These styles are outlined on the following pages; please refer to each specific application product guide for comprehensive information about each of these additional applications.

FENCE ENCLOSURE APPLICATIONS

RACQUET COURT



POOL



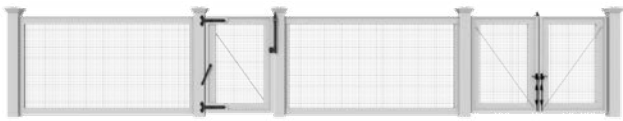
GARDEN



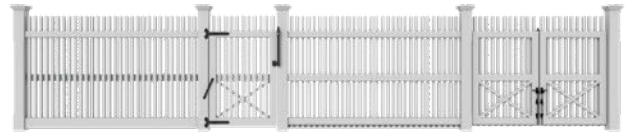
UTILITY



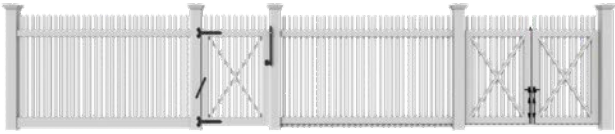
POOL ENCLOSURE STYLES



Sag Harbor



Chestnut Hill

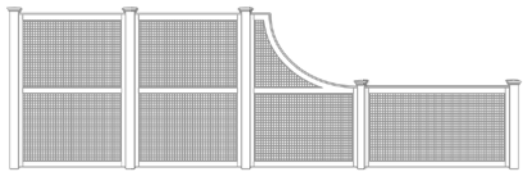


Nantucket

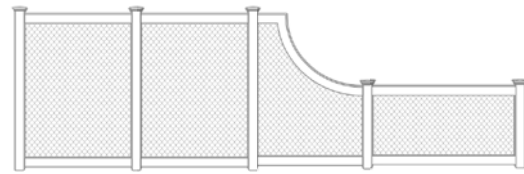


Richmond

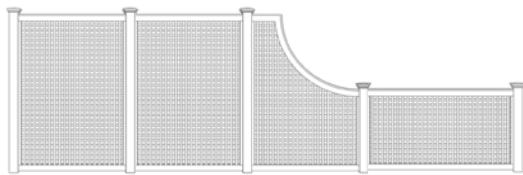
RACQUET COURT ENCLOSURE STYLES



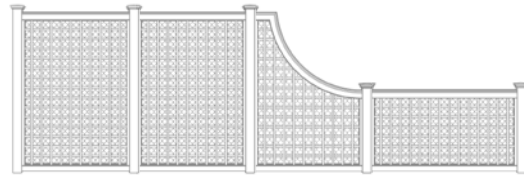
Sag Harbor



Aquidneck

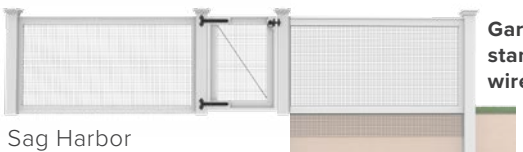


2" Horizontal-Vertical Lattice



5" Horizontal-Vertical Lattice

GARDEN ENCLOSURE STYLES



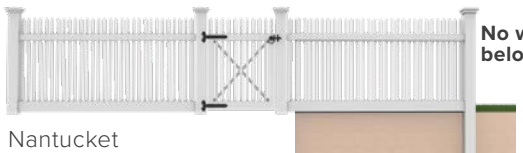
Sag Harbor

Garden style
standard with
wire below grade



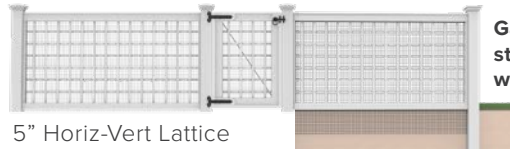
Morgan

Garden style
standard with
wire below grade



Nantucket

No wire
below grade



5" Horiz-Vert Lattice

Garden style
standard with
wire below grade

UTILITY ENCLOSURE STYLES Additional styles not shown



Universal



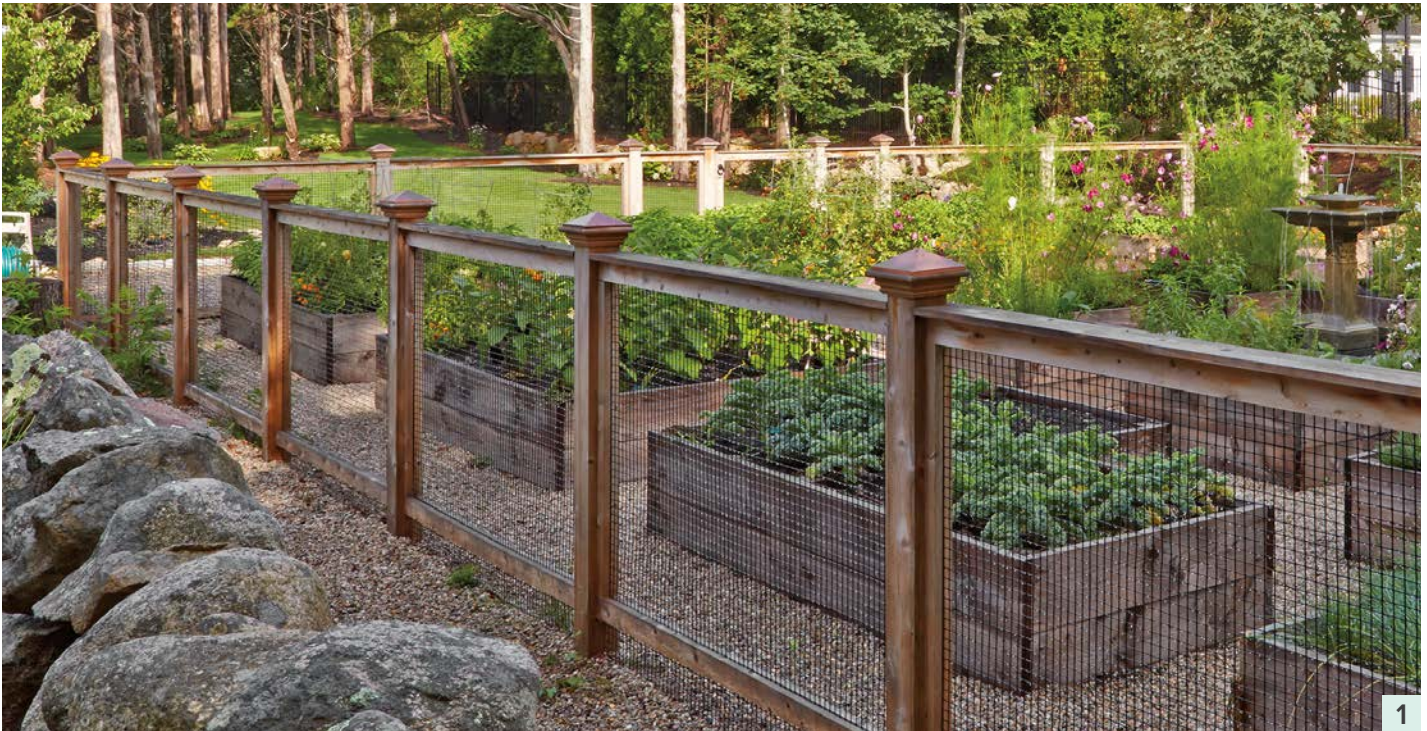
Lattice Topper



Louvered



Spaced Horizontal



1



2



4



3



5

1 Cedar Sag Harbor Garden Fence with Southport post caps 2 2" HV Lattice Utility Enclosure 3 Cedar Nantucket pool fence
4 Aquidneck tennis court fence with Basketball Corners 5 Sag Harbor Garden Fence with Chippendale Star gate

Walpole Outdoors™

255 PATRIOT PLACE, FOXBOROUGH, MA 02035



Visit walpoleoutdoors.com

Find even more inspiration, learn about our unique capabilities, and purchase items to be shipped nationwide from our online catalog.

Call (866) 447-2372

Talk to us today for more information before placing an order or to schedule a complimentary in-person or virtual design consultation.

Visit a Walpole Outdoors Design Center

Walpole Outdoors has design centers across the country where you can see our products and structures on display and speak with a knowledgeable consultant. Ask your local showrooms about installation and delivery of your products.

DESIGN CENTERS

Corporate Headquarters

255 Patriot Place, Foxborough, MA 02035
508.474.8450

Massachusetts

958 E. Falmouth Hwy, E. Falmouth, MA 02536
508.444.8016

Connecticut

181 Westport Ave, Norwalk, CT 06851
203.255.9010

Rhode Island

1350-A Bald Hill Rd, Warwick, RI 02886
401.519.7923

New York

200 Glen Cove Rd, Old Brookville, NY 11545
516.363.1290

New Jersey

540 Tabor Rd, Morris Plains, NJ 07950
973.828.8196

Virginia

102 Executive Dr, Bay C, Sterling, VA 20166
301.983.6040

PARTNERS

Florida

Treasure Cove, Sarasota, FL
MJ Weremay Design, Ormond Beach, FL
Seaside Exteriors, Hobe Sound, FL
Artisan Outdoor Living, Wildwood, FL

Massachusetts

Pine Harbor, Hyannis, MA
Pine Harbor, Harwich, MA

New Hampshire

Bedford Fields, Bedford, NH

New Jersey

Bain's Outdoor Living, Rumson, NJ

New York

Bay Gardens, East Moriches, NY

North Carolina

Structerra Outdoor, Raleigh, NC

Pennsylvania

Bucks Country Gardens, Doylestown, PA

South Carolina

Structerra, North Charleston, SC

