

Walpole Outdoors™



FENCE CATALOG



CONTENTS

WALPOLE OUTDOORS	4	POST & RAIL FENCE	56
SOLID CELLULAR VINYL	7	Morgan	58
OUR PROCESS	8	Manchester	60
SELECTING A FENCE	9	Kentucky	62
FENCE STYLES AND DETAILS	10	Yarmouth	63
STANDARD PAINT COLORS	12	Eastham	64
		Orleans	65
PICKET FENCE	14	FENCE WITH WIRE	66
Chestnut Hill	16	Sag Harbor	68
Westchester	18	METAL FENCE	70
Yorktown	20	Echelon	72
Nantucket	22	Montage	73
Potomac	23	CUSTOM DESIGN FENCE	74
Sudbury	24	RAILINGS	78
Wolcott	25	ENCLOSURES	84
Richmond	26	Shower	86
Cape Cod	27	Court	90
Brentwood	28	Pool	92
Cambridge	29	Garden	94
		Utility	96
SCREEN FENCE	30	ARBORS & PERGOLAS	98
Chesapeake	32	Arbors	100
Traditional	34	Kit Pergolas	104
Universal	36	Freestanding Pergolas	106
Horizontal Universal	38	Attached Pergolas	110
Cape Cod	39	Shade Canopies	112
Princeton	40	GATES & GATE HARDWARE	114
Chilmark	41	Walk Gates	116
		Gate Hardware	120
SEMI-SCREEN FENCE	42	Driveway Gates	122
Horizontal-Vertical Lattice	44	LATTICE & TRELLIS	128
Diagonal Lattice	46	Lattice	130
Horizontal-Vertical Lattice Topper	48	Trellis	134
Diagonal Lattice Topper	49	SELECTIONS	138
Yorktown Topper	50		
Highland Topper	51		
Spindle Topper	52		
Shadowbox	53		
Victorian Lattice	54		
Victorian Lattice Topper	55		

THE WALPOLE OUTDOORS DIFFERENCE

Handcrafted. Quality. Uncompromising.

For the artisans of Walpole Outdoors, these aren't just words. Over the past 90 years, these principles have driven us to help our customers create their best outdoor lifestyle, and they're the foundation of what we do for you today.



Universal Board Fence
with 24" Highland Topper
in Solid Cellular Vinyl

QUALITY CRAFTSMANSHIP

Exceptional Products Crafted in the USA

For almost a century, Walpole Outdoors has been creating beautifully crafted fences, pergolas, arbors, gates, and more in our North American workshop.

We combine timeless traditional methods and cutting-edge engineering in our state-of-the-art New England facilities, where we produce our wide range of classical and contemporary designs. Here the hands-on care of our very first Maine workshop lives on, combined with the most advanced technologies and techniques of precision fabrication. Whether you prefer low-maintenance solid cellular vinyl or wood, every product is shaped, mitered, and routed using the same methods that we have employed for generations. While some of our techniques and processes have been modernized for greater efficiency, we remain committed to our legacy of quality craftsmanship.

Because we design, engineer, and craft the majority of our products in-house, we control the very high level of quality that our customers experience.



CUSTOM DESIGN SOLUTIONS

Design Your Unique Outdoor Lifestyle

Our unique capabilities allow us to offer a range of beautiful design collections, as well as customized pieces and projects, that match your personal concepts, your home's architecture, or any architect's drawings.

The complimentary service of our design consultants and engineers is part of every Walpole Outdoors experience, ensuring that each customer's vision for outdoor living is brought to life with our incredible catalog of styles and infinite customization options.

Our expert staff can work from your professional drawings, simple sketches, photographs, or ideas to create the one-of-a-kind outdoor structures that perfectly complement your taste, needs, and the architecture of your home or business—and help define your home and outdoor lifestyle.

INNOVATION

90 Years of Forward Thinking

Walpole Outdoors has a proud legacy of innovation, beginning with our first wood designs and dependable outdoor structures in the 1930s. As solid cellular vinyl became known as a reliable wood alternative, Walpole Outdoors was the first to engineer a full line of structural outdoor products crafted of this material. And because it's meant to look and feel like wood, our team subsequently developed a unique, high-performance coating recognized for its aesthetic value and natural resemblance to wood.

This spirit of innovation lives on in everything we do. Whether it's determining the right siting for a backyard fence or evaluating wind uplift requirements for a rooftop pergola, our team is dedicated to finding creative and effective solutions for the most complex of situations.

Sag Harbor Fence
in Solid Cellular Vinyl
painted Iron Ore with
Custom Double Gate



TIMELESS METHODS, INNOVATIVE MATERIAL

Walpole Outdoors is the nation's largest and most advanced fabricator of solid cellular vinyl. This synthetic material is produced in an environmentally friendly process, offering the look and feel of genuine hardwood while resisting corrosion, termites, and moisture. Milling, carving, carpenter-finishing, and factory painting of our solid cellular vinyl products are handled with the same care and craftsmanship as our hardwoods—combined with the most advanced techniques of fabrication. This unequalled experience fabricating, reinforcing, and finishing with solid cellular vinyl means we are best suited to meet customer needs in crafting fences and outdoor structures in this material.

Unique Tools: Walpole's craftsmen generate maximum efficiency with our four CNC routers, including a 27-foot CNC with 12 tool heads.

Proprietary Dies: 30 proprietary dies deliver seamless beams, joists, pickets, and smooth post caps, all factory-coated with Sherwin-Williams VinylSafe® paint. Through these dies, as well as our sanding and painting techniques, we are able to minimize open cell structure issues for a smoother, cleaner finish.

Continuous Custom Forms: By heating, bending, and shaping solid cellular vinyl, we generate custom curves and creative details from one continuous piece, with no cracks or separations.

Metal Fabrication and Reinforcement: At our in-house fabrication plant, we custom build structural reinforcement and hardware for all solid cellular vinyl products—with a steel and aluminum inventory waiting for fabrication.



OUR PROCESS

1 SITE VISIT & DESIGN CONSULTATION

Our design consultants are available for in-home visits at no cost to you. This service includes everything from taking measurements to offering guidance on fence styles, gates, cap selections, and other accessories. Our experts will help you visualize your landscape in exciting new ways.



2 QUOTE & PROPOSAL

Once size, style, material, and technical requirements are finalized, your Walpole Outdoors consultant will provide a quote for approval. This detailed proposal takes into consideration the selected fence style and the measurements taken during the home visit, as well as any site constraints.



3 FABRICATION

Once the proposal is finalized, our designers produce detailed drawings and specifications. Walpole's engineering department reviews every order to ensure manufacturing accuracy before fabrication begins. In the creation of every picket, spindle, board, post, rail, top and cap, Walpole craftsmen follow exacting standards in symmetry, balance, size, and proportion. Our unique technologically advanced, in-line staining system ensures uniform coverage on your fence.



4 INSTALLATION

Our trained employees have long-since perfected the art of proper fence installation. Walpole experts make certain that posts are dug to the proper depth for the size and style of fence. The posts are tamped all the way up so the fence is perfectly straight and sturdy. Each section is carefully aligned and fastened securely to the posts. We have maintained our position as the preeminent fence company through our commitment to working with clients, ensuring that the end result is everything they expect and demand.



SELECTING A FENCE

Before you choose a particular and distinctive Walpole Outdoors fence, you should consider both the primary function it will serve—privacy, purely aesthetic, or to protect children, pets, and animals, for example—and how your choice will affect your home and landscaping. The possibilities we offer include everything from formal, square-edged, and rustic, to antique reproduction and contemporary, as well as ornamental steel and rope.

Vertical: Pickets, spindles, or boards are the upright elements. A section treatment of these can be straight, scallop, or convex scallop.

Horizontal: The rails that hold pickets uniformly in place can be straight or curved. You also have the choice to add a fence cap, which sits along the top of pickets or boards.

Posts: These are the main, sturdy fence supports. They come in a variety of different widths, heights, sizes, and detailing elements. Larger dimensional posts, such as pillar posts, create additional architectural interest.

Post Tops and Caps: Post tops can be cut to many distinctive shapes. Post caps are fixed to posts for style by adding a wider top dimension. Walpole offers many styles and custom designs.

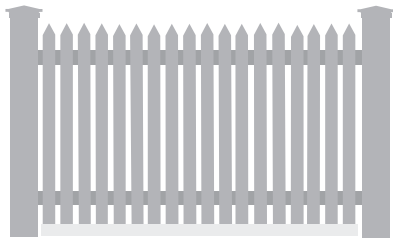
Color: With our curated collection of 18 standard paint colors, our customers can make their fence or outdoor structures unique to their own home or business. We can also provide completely custom paint colors to match any aesthetic or existing architecture.

Your fence is a matter of personal preference, and Walpole gives you a multitude of exciting options.

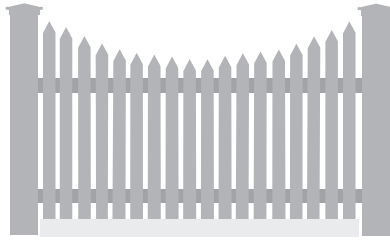


FENCE STYLES AND DETAILS

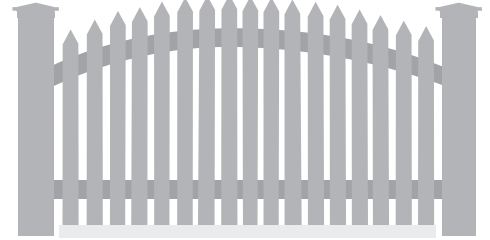
FENCE SECTION TREATMENTS



**Straight Top
with Straight Rail**



**Concave Scallop Top
with Straight Rail**

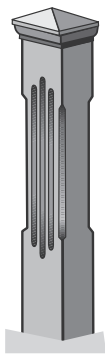


**Convex Scallop Top
with Curved Rail**

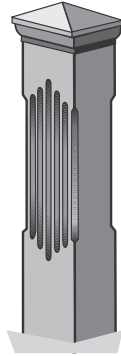
POST DECORATIONS



Smooth



3 Flutes



5 Flutes

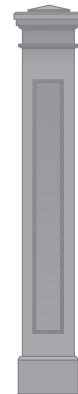
PILLAR POSTS



Bostonian



Darien



Wenham

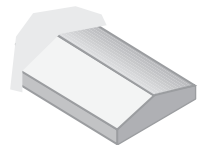


Granite

FENCE CAPS

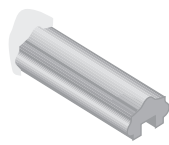
* Solid Cellular Vinyl only

** Cedar only



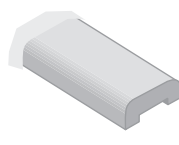
Architectural

- Universal
- Traditional
- Lattice
- Shadowbox
- Sag Harbor
- Lattice Toppers



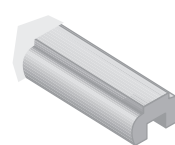
Artistic

- Princeton
- Chilmark**
- Chesapeake*
- Nantucket
- Wolcott
- Sudbury*
- Potomac*



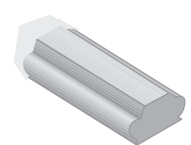
Decorative

- Princeton
- Chilmark
- Nantucket
- Wolcott
- Sudbury*
- Potomac*



Essex

- Princeton
- Chilmark**
- Nantucket
- Wolcott
- Sudbury
- Potomac*



Yorktown

- Universal
- Traditional
- Lattice
- Shadowbox
- Sag Harbor
- Lattice Toppers

POST CAPS

The following post caps are available for both Solid Cellular Vinyl and Cedar posts with the exception of the Bedford Cap, which is available only for Solid Cellular Vinyl fence posts. Hollow Vinyl fence posts may be capped with any Solid Cellular Vinyl caps, as well as the Haven in Hollow Vinyl.



Westport



Colonial



Southport
with Copper



True Copper



Bedford with
Trim Ring



Falmouth



Haven
Hollow Vinyl only

FINIALS Solid Cellular Vinyl only



Acorn



Sphere



Grecian Urn



Tudor Urn

PICKET TYPES



Brentwood



Cambridge



Cape Cod



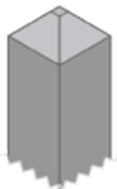
Chestnut Hill



Nantucket



Potomac



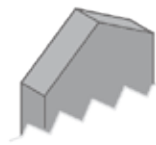
Richmond



Sudbury



Westchester



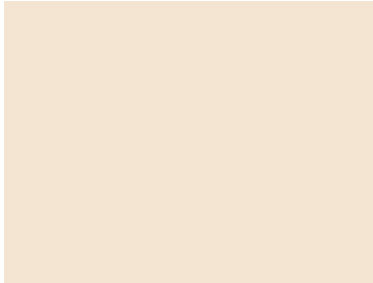
Wolcott



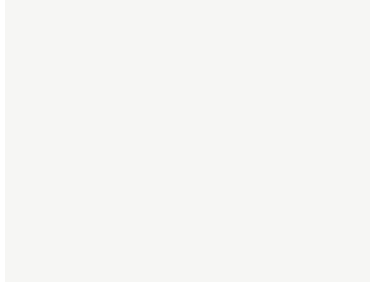
Yorktown

STANDARD PAINT COLORS

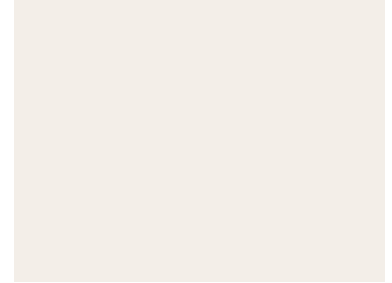
Our quality controlled in-line coating system ensures uniform coverage on your fence or outdoor structure. Through a high pressure, airless spraying operation in our New England workshop, two coats of latex stain or vinyl safe paint are applied by a high pressure, airless spraying operation with a sanding station and drying oven located between each coat. This process is far superior to staining after installation and eliminates mess in the yard and garden.



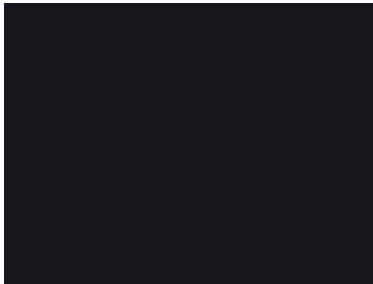
SW 6126 Navajo White



SW 7006 Extra White

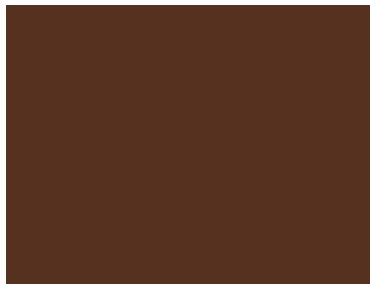


SW 7008 Alabaster

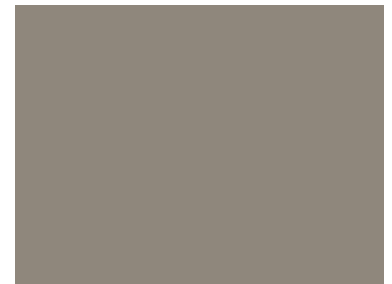


SW 6258 Tricorn Black

This color may not be suitable for all products. Please call for availability.



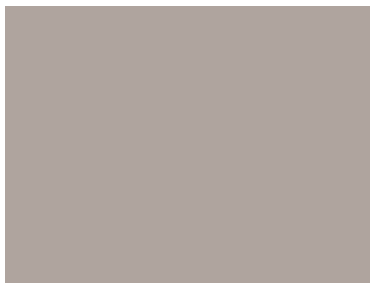
SW 6069 French Roast



SW 7046 Anonymous



SW 7069 Iron Ore



SW 7024 Functional Gray



SW 7064 Passive

Walpole Outdoors is proud to partner with Sherwin Williams, an industry leader in premium coatings for more than 150 years, to create this curated collection of standard colors. We use only top quality VinylSafe® paint, offered with a 25-year warranty, and can also custom mix our exterior coatings to meet unique style needs.



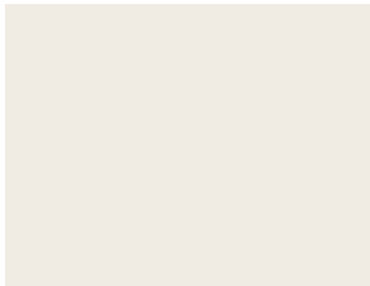
SW 6208 Pewter Green



SW 7067 Cityscape



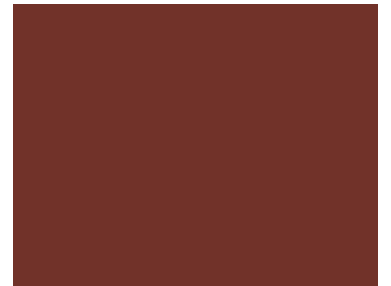
SW 0041 Dard Hunter Green



SW 7551 Greek Villa



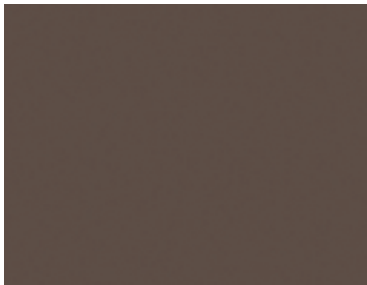
SW 7048 Urbane Bronze



SW 7593 Rustic Red



SW 3027 Driftwood (Woodscapes)



SW 3021 Spicewood (Woodscapes)



SW Custom Verde Green

NOTE: The color samples shown on these pages are digital representations to approximate actual paint colors. Environmental conditions such as heat, light, substrate, and other processes may cause the color to vary from the printed sample. Please contact Walpole Outdoors to see an actual sample.

PICKET FENCE



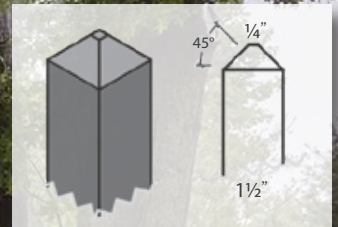
With its strong vertical lines, there's an orderly stateliness to this popular and enduring fence style. Whether you choose the Westchester with its row of lower pickets, the bold and geometric lines of the Yorktown, the charming, wide Wolcott picket or any of the many other styles, the picket fence is certain to create a graceful appearance that dignifies and enhances the beauty of any boundary.



CHESTNUT HILL
WESTCHESTER
YORKTOWN
NANTUCKET

POTOMAC
SUDBURY
WOLCOTT
RICHMOND

CAPE COD
BRENTWOOD
CAMBRIDGE



CHESTNUT HILL

A solid classic fence beautifully combines practicality with charm and grace.

CONNECTION Mortise and Tenon

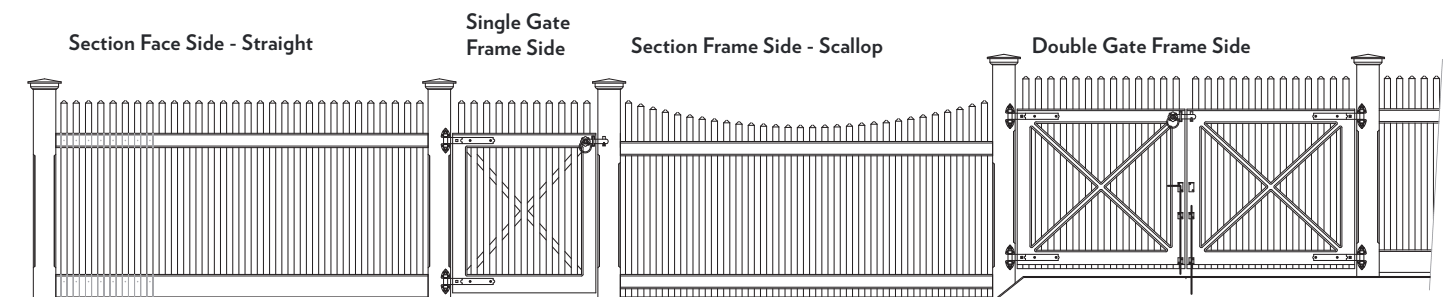
PICKETS 1 1/2" smooth square with pointed tops

POSTS 5 1/2" square

HEIGHT 3 1/2' H to 6' H

AVAILABLE IN Solid Cellular Vinyl, Cedar, Hollow Vinyl

SHOWN A 3.5' high Chestnut Hill fence with modified 3" spaced scalloped pickets blends tastefully with the home's outdoor area. The matching 35" wide Chestnut Hill walk gate features a crisscross motif for extra bracing and provides a welcoming invitation into any part of the garden.

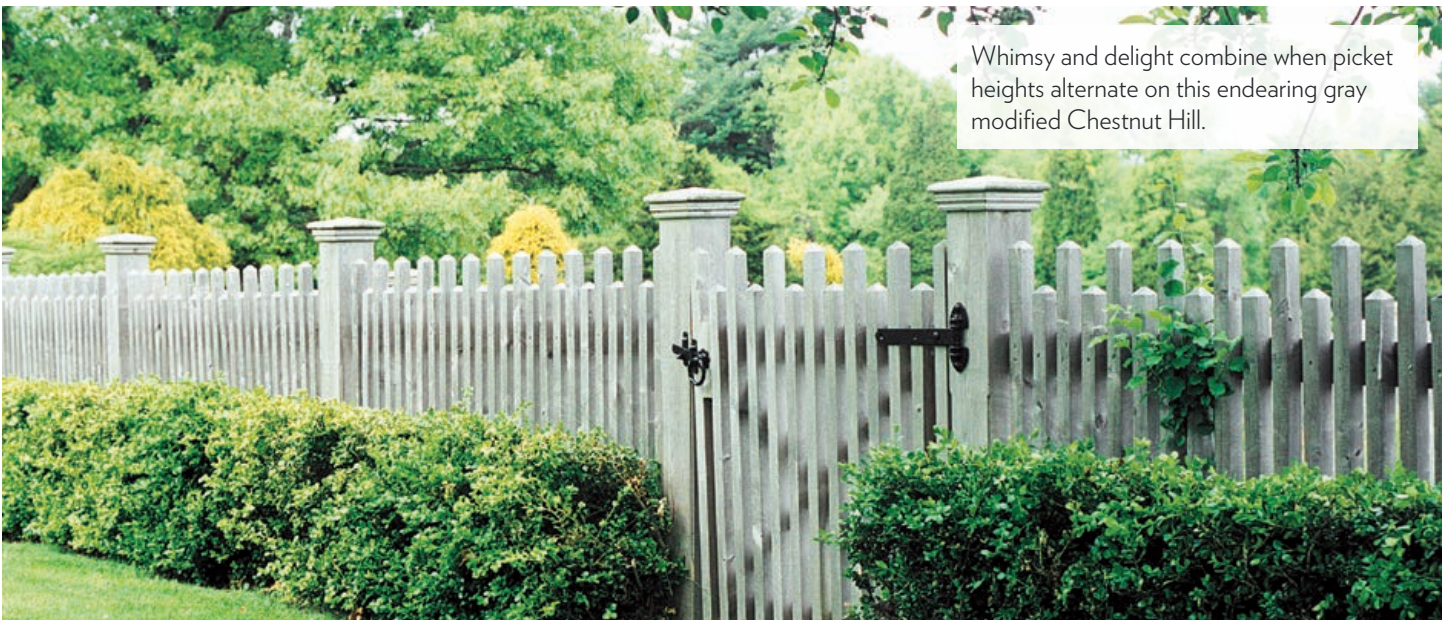




This Chestnut Hill combines practicality with charm and grace as its flowing lines meet at a handsome walk gate.



A radius Chestnut Hill fence encloses a defined area of greenery. Behind it, a straight fence includes a concave-topped walk gate.



Whimsy and delight combine when picket heights alternate on this endearing gray modified Chestnut Hill.



WESTCHESTER

With its strong vertical lines, there's an orderly stateliness to this popular and enduring style.

CONNECTION Mortise and Tenon

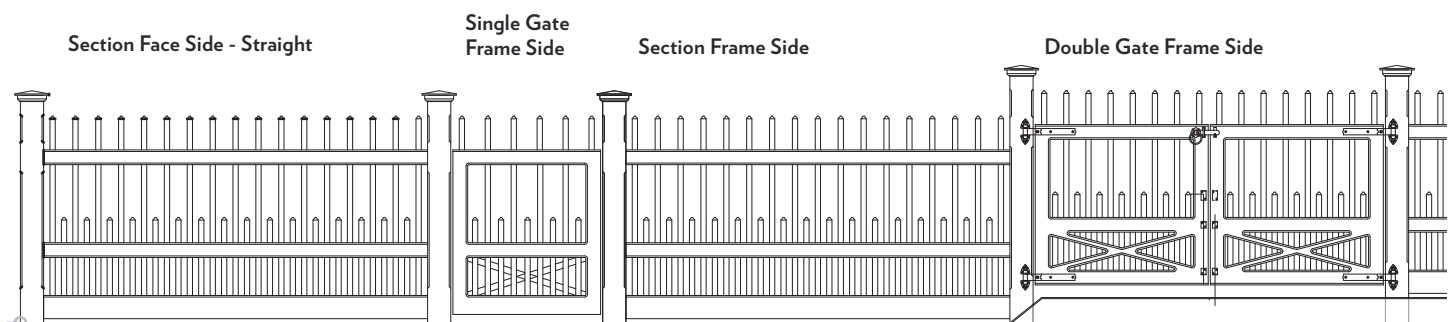
PICKETS Square picket, alternating heights

POSTS 5½" square

HEIGHT 3½' H to 6' H

AVAILABLE IN Solid Cellular Vinyl, Cedar, Hollow Vinyl

SHOWN A 3.5' high fence beautifully complements the architecture of the home while accommodating the yard's bushes and plantings. The homeowners selected Westport Caps and a matching single walk gate to complete the look.





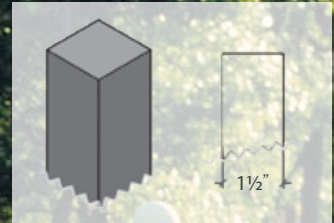
This 5' high Westchester picket fence with matching walk gate is painted Iron Ore for a dramatic effect in this Florida backyard.



A beautiful Arched Arbor provides a focal point for this elegant Westchester fence and convex scallop top double walk gate.



A classic Westchester fence and a matching driveway gate in white create a warm, welcoming entrance for the home.



YORKTOWN

Bold, geometric, and clean yet elegant lines make this fence a popular choice.

CONNECTION Mortise and Tenon

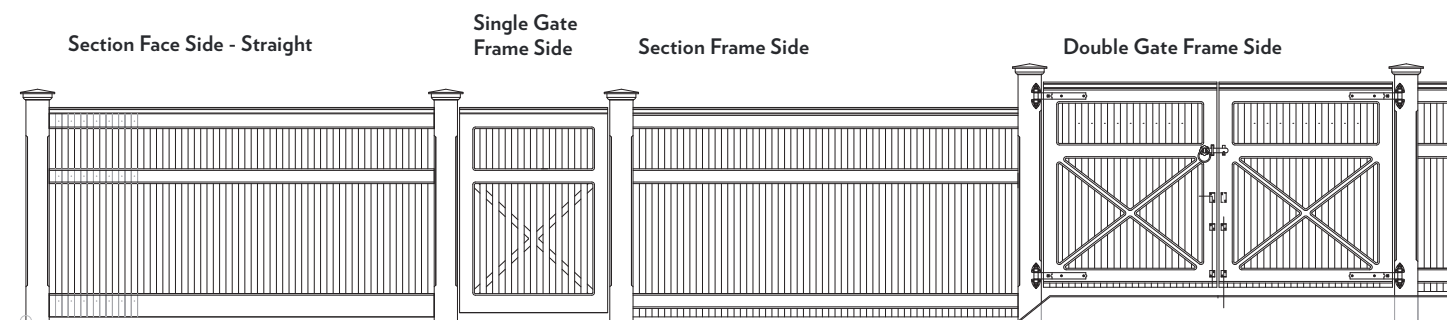
PICKETS 1 1/2" square picket with Yorktown cap

POSTS 5 1/2" square

HEIGHT 3 1/2' H to 6' H

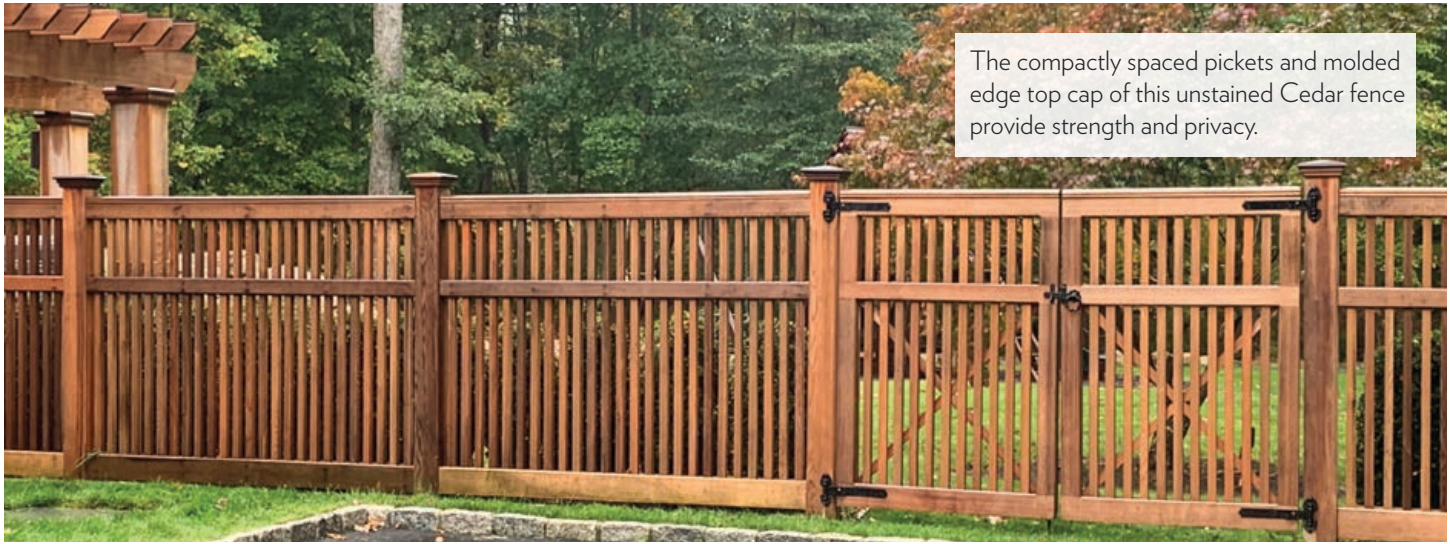
AVAILABLE IN Solid Cellular Vinyl, Cedar, Hollow Vinyl

SHOWN This imposing 5' high fence with geometric proportions, featuring Colonial cap bases with 5" spheres, creates a stately boundary for this home's perimeter.





This 4' high Yorktown fence works perfectly with the concave scalloped walk gate and Spindle Top Arbor.



The compactly spaced pickets and molded edge top cap of this unstained Cedar fence provide strength and privacy.



In harmony with the landscape is this Verde Green Yorktown fence with scallop double entry gate.

NANTUCKET



CONNECTION Mortise & Tenon

PICKETS 3/4" x 1 1/2" pointed picket

POSTS 5 1/2" square in Vinyl; 4 1/2" square in Cedar

HEIGHT 3' H to 6' H

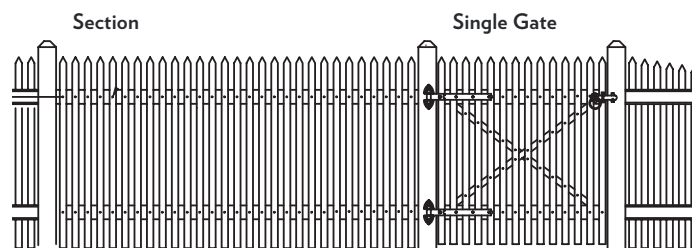
AVAILABLE IN Solid Cellular Vinyl, Cedar, Hollow Vinyl

SHOWN

Top: Airiness and light are the features of this oceanfront Nantucket picket with walk gate.

Middle: An imaginative radius section adds a graceful new dimension to this fence with optional fascias.

Bottom: A curved gate rail and arbor top complement the straight lines of this modified Nantucket with optional fascias and kickboards.



POTOMAC



STANDARD GATES

We offer a wide selection of standard walk gates, as well as the opportunity to customize a gate to suit your specific taste and needs.



Hampton Double Gate. See additional Walk Gates on Page 116.

CONNECTION Mortise & Tenon

PICKETS Square with pointed picket

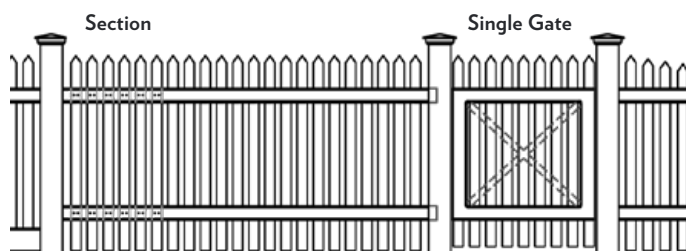
POSTS 5½" square

HEIGHT 3' H to 6' H

AVAILABLE IN Solid Cellular Vinyl

SHOWN

A beautifully precise picket fence, the Potomac enhances even the most elegant of homes and outdoor spaces.



SUDBURY



CONNECTION Mortise and Tenon

PICKETS 3/4" x 2 1/2" with rounded point

POSTS 5 1/2" square

HEIGHT 3' H to 6' H

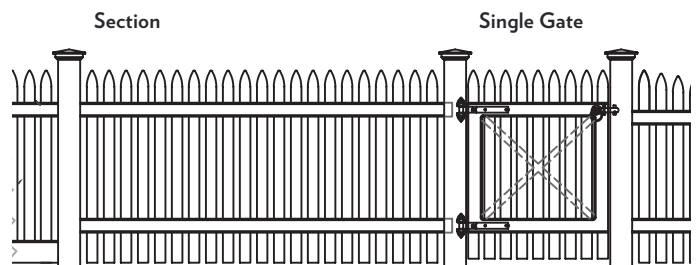
AVAILABLE IN Solid Cellular Vinyl, Hollow Vinyl

SHOWN

Top: A much admired classic picket, this Sudbury is the epitome of a gracious perimeter fence.

Middle: Stately Sudbury picket with Westport caps frames the curved edge of this property.

Bottom: A traditional island style capped Sudbury fence with concealed posts.



WOLCOTT



CONNECTION Mortise and Tenon

PICKETS 3/4" x 2 1/2" pointed picket

POSTS 5 1/2" square in Solid Cellular Vinyl; 4 1/2" square in Cedar

HEIGHT 3' H to 6' H

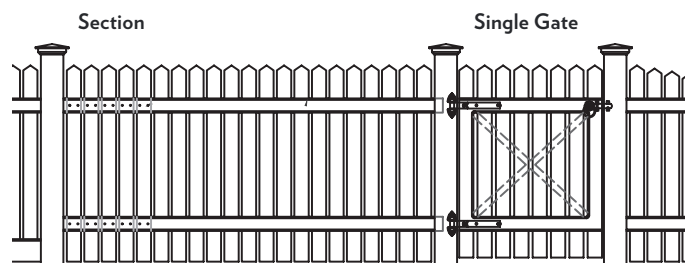
AVAILABLE IN Solid Cellular Vinyl, Cedar

SHOWN

Top: All the charm of a country cottage is captured in this Wolcott picket with Falmouth post caps and a stepped slant end section.

Middle: This Wolcott picket fence and matching single walk gate are the perfect touch to this seaside cottage.

Bottom: A standard Wolcott fence creates a gracious pool enclosure in this home's yard.



RICHMOND

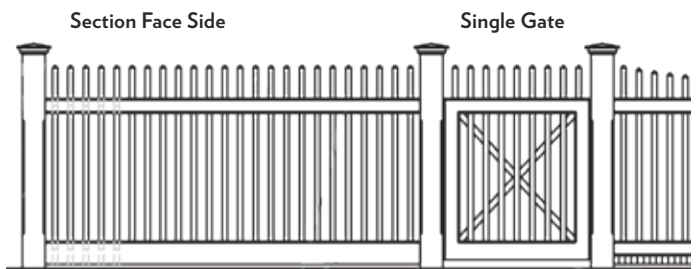


CONNECTION Mortise & Tenon
PICKETS 1 1/4" square with pointed picket
POSTS 5 1/2" square
HEIGHT 3' H to 6' H
AVAILABLE IN Solid Cellular Vinyl
SHOWN

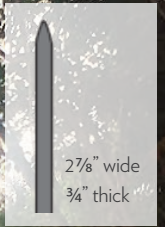
Top: This yard is protected by a standard Richmond fence and its single walk gate with top pull magna latch.

Middle: A straight top Richmond fence with Westport caps creates a distinctive boundary for this home's yard.

Bottom: With its elegant look and feel, the Richmond is often the fence of choice for pool enclosures.



CAPE COD



CONNECTION Stockade Style with 80% round backing rail

PICKETS $\frac{3}{4}$ " thick and $2\frac{7}{8}$ " wide

POSTS 5" diameter

HEIGHT 4' H to 6' H

AVAILABLE IN Cedar

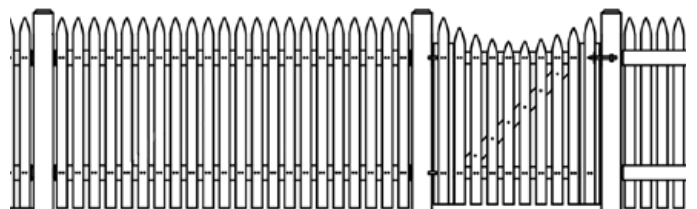
SHOWN

Top: This traditional stockade style fence can easily be tailored to your landscaping and offers sturdy perimeter privacy.

Bottom: An unstained Cape Cod picket blends naturally with the garden of this home.

Single Gate Face Side

Section Frame Side



BRENTWOOD



CONNECTION Cleated

PICKETS 1 1/4" diameter round spindle

POSTS 5 1/2" square

HEIGHT 3' H to 6' H

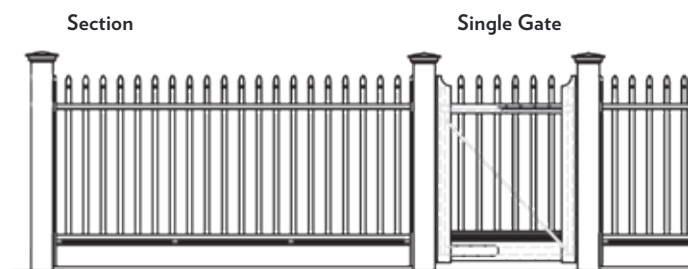
AVAILABLE IN Solid Cellular Vinyl

SHOWN

Top: A spindle fence that defines the property while capturing the spirit of classic homes.

Middle: This modified Brentwood fence in Verde Green provides the perfect frame for an oceanside pool view.

Bottom: Capturing the spirit of this Cambridge home, our Brentwood Spindle is enhanced by a curved rail walk gate.



CAMBRIDGE



CONNECTION Cleated

PICKETS 1 1/4" diameter round spindle

POSTS 5 1/2" square

HEIGHT 3' H to 5' H

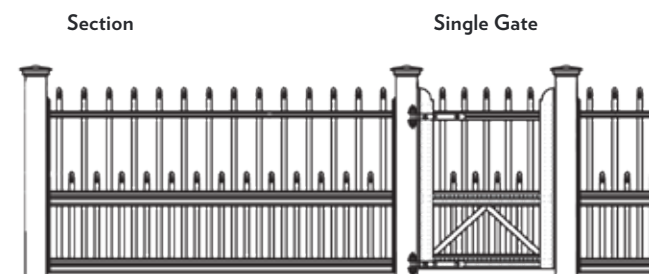
AVAILABLE IN Solid Cellular Vinyl

SHOWN

Top: To complement an historical property, the engineered curves work effortlessly with the grade.

Middle: This fence was painted a custom color to match the home's trim, and a custom gate with arched top was designed to mimic the shape of its windows.

Bottom: The Cambridge Spindle is in a class by itself, featuring unique spindle pickets that are captivating.



SCREEN FENCE



The screen fence provides a superb combination of privacy and security around a property or pool. These fences are solid, impressive, and built to stand the test of time. Designed with little or no space between their boards, the screen fence is an elegant and popular solution.



CHESAPEAKE
TRADITIONAL
UNIVERSAL
HORIZONTAL UNIVERSAL

CAPE COD
PRINCETON
CHILMARK



CHESAPEAKE

Privacy without ever compromising good taste in low maintenance solid cellular vinyl.

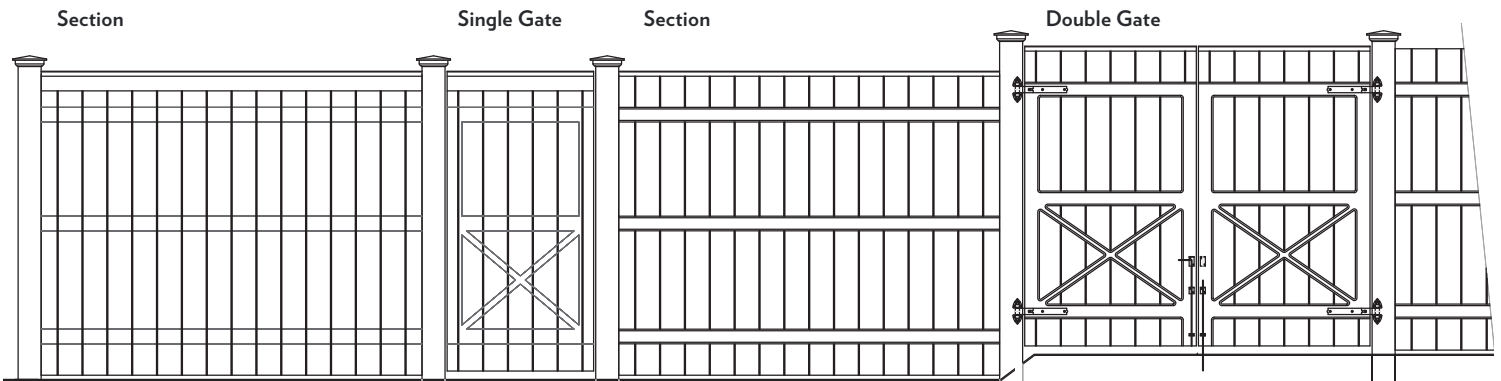
CONNECTION Mortise and Tenon

POSTS 5½" square

HEIGHT 4' H to 6' H

AVAILABLE IN Solid Cellular Vinyl

SHOWN Painted Driftwood Gray, this 6' high fence includes a scalloped walk gate. It is supported by 5½" square posts with Westport caps.





Painted Pewter, this Chesapeake privacy board fence is 6' high and has 5½" square posts with Westport caps.



This Chesapeake fence stands 6' high and has sturdy 5½" square posts with Westport caps.



A scallop topped gate with black ring gate latch affords a handsome entryway through this home's Chesapeake fencing.



TRADITIONAL

A fence that features multiple boards per section for a more defined look.

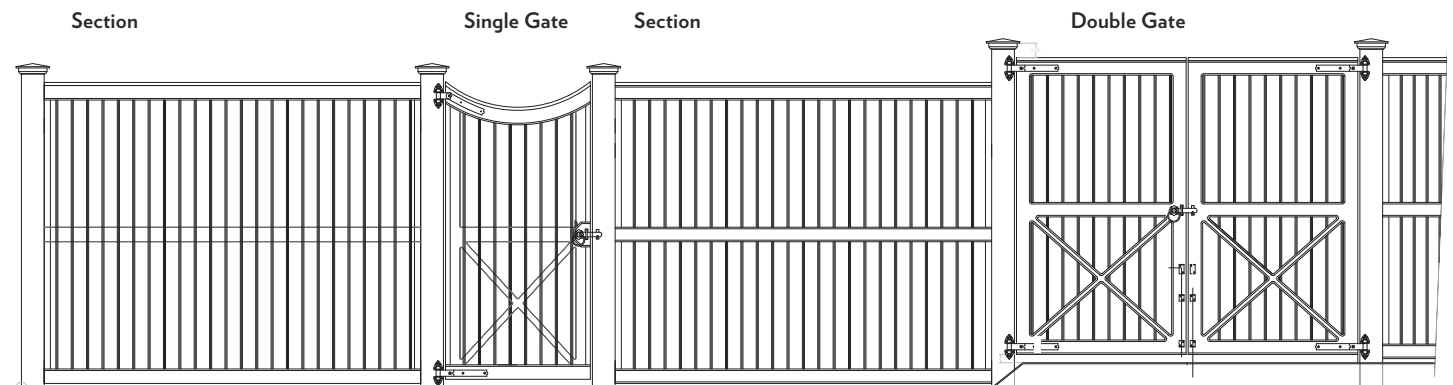
CONNECTION Cleated Fence

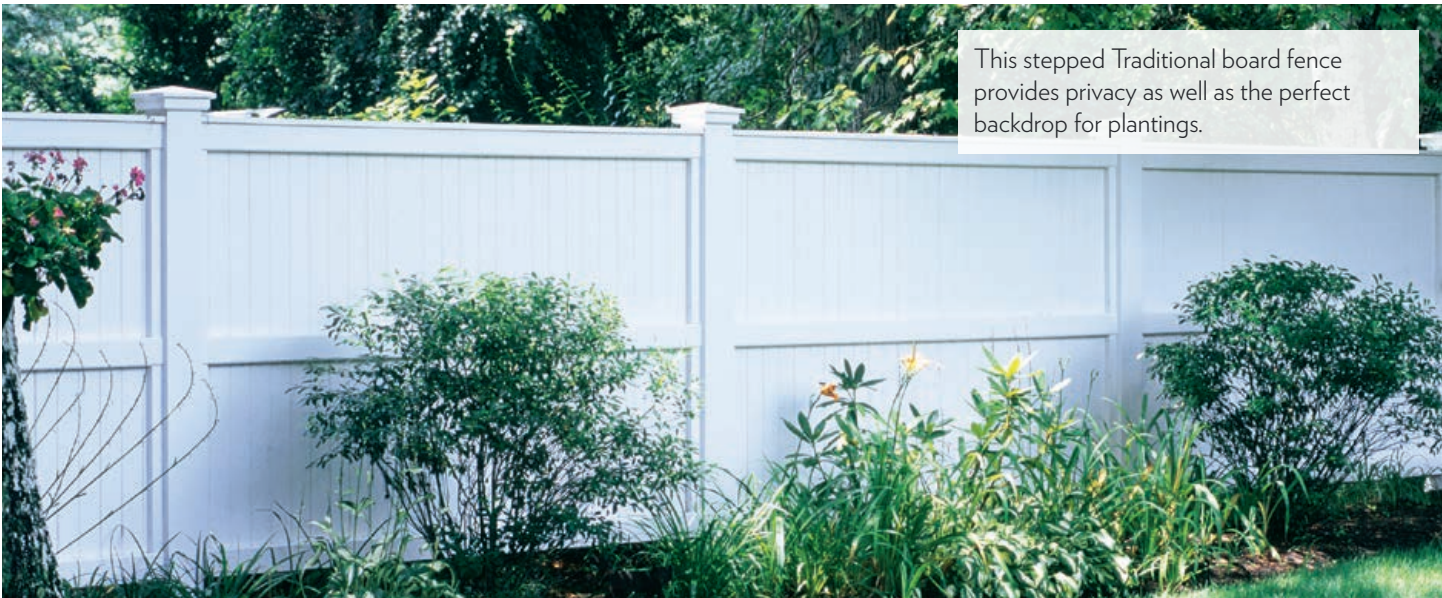
POSTS 5½" square

HEIGHT 4' H to 8' H

AVAILABLE IN Solid Cellular Vinyl, Cedar

SHOWN This 8' high Traditional screen fence with bevel top posts is stepped to follow the flow of the landscape.

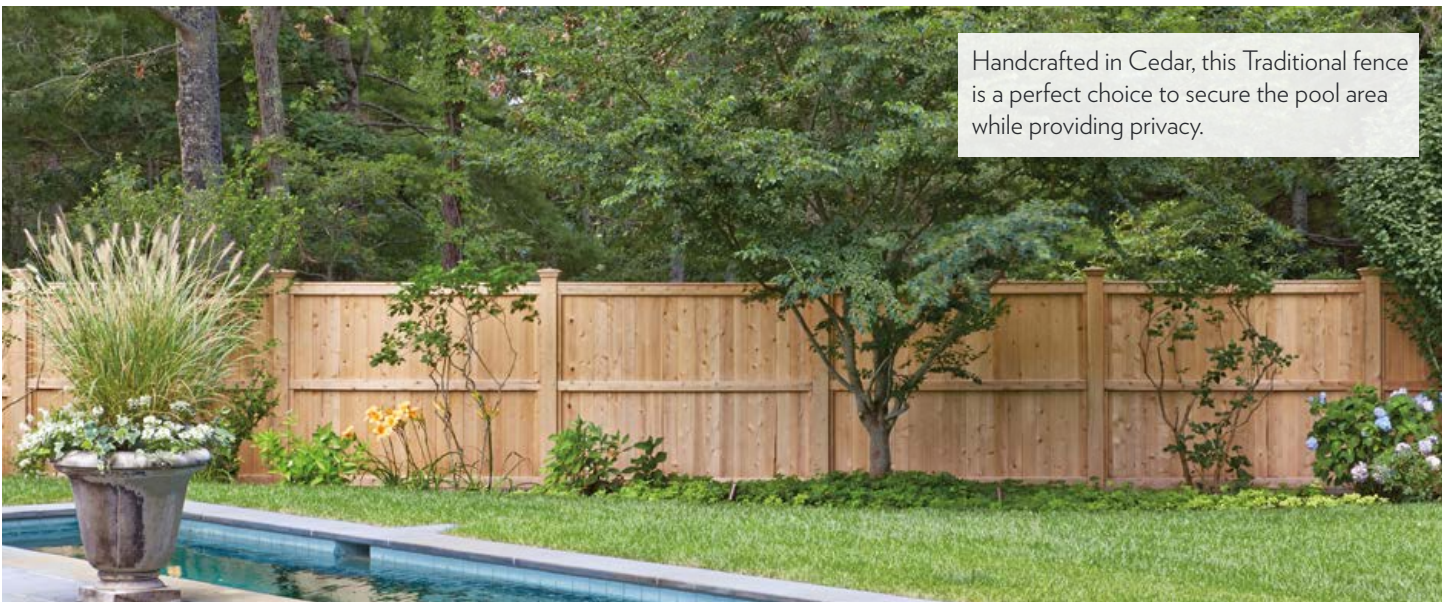




This stepped Traditional board fence provides privacy as well as the perfect backdrop for plantings.



Whether creating a secure area or marking boundaries, this handsome fence is a natural choice.



Handcrafted in Cedar, this Traditional fence is a perfect choice to secure the pool area while providing privacy.



UNIVERSAL

A solid commitment from a fence that will endure and hold its ground season upon season.

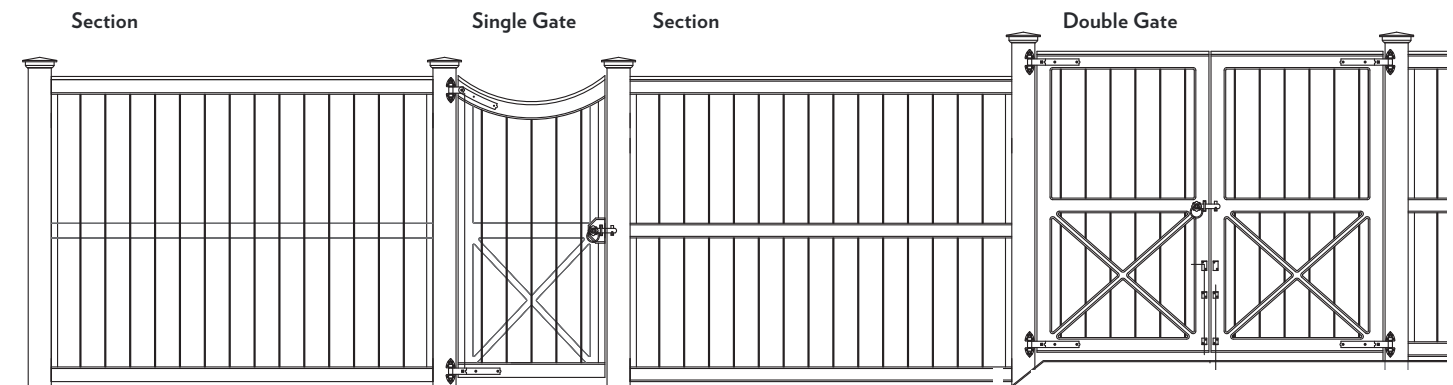
CONNECTION Cleated Fence

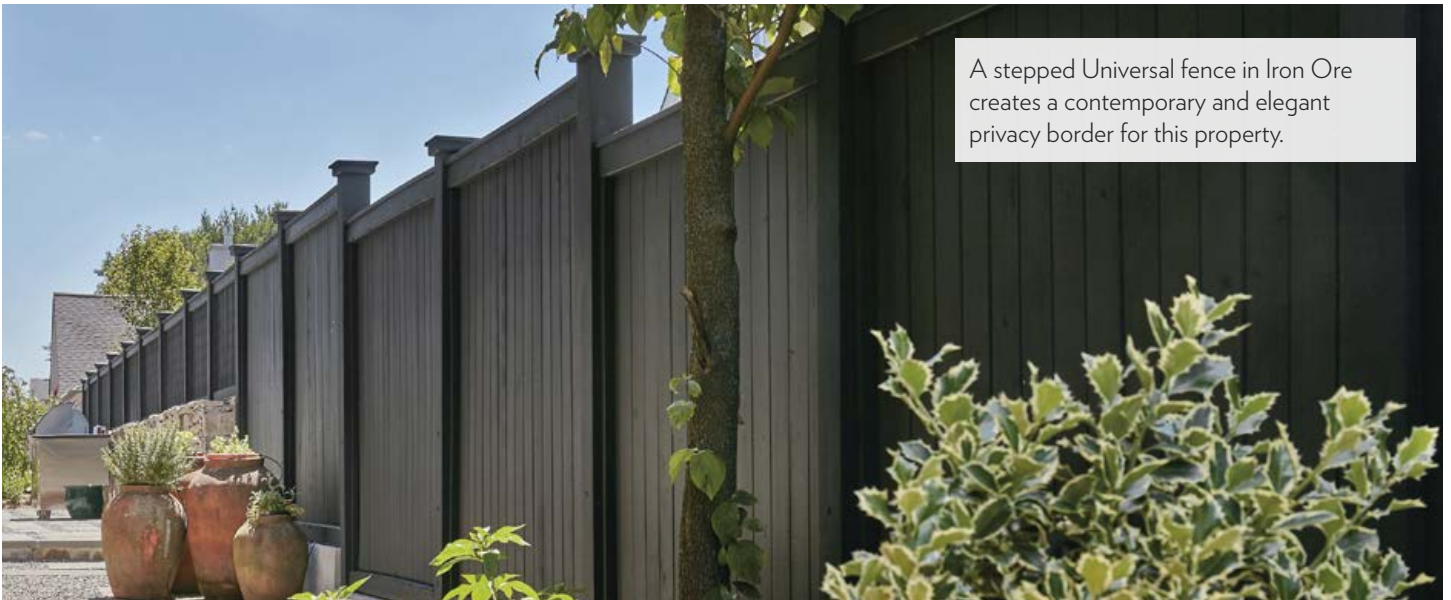
POSTS 5½" square

HEIGHT 4' H to 8' H

AVAILABLE IN Solid Cellular Vinyl, Cedar, Hollow Vinyl

SHOWN Handcrafted Walpole fences can accommodate any landscape. This Universal board fence steps securely down the slope, adding a tasteful backdrop of privacy behind the home's shrubbery.





A stepped Universal fence in Iron Ore creates a contemporary and elegant privacy border for this property.



This Universal fencing is secured to the patio's bluestone and stepped to accommodate the outdoor area's contours.



A Universal fence sits atop a stone wall for this driveway border, including a custom walk gate that matches the home's aesthetic.

HORIZONTAL UNIVERSAL



CONNECTION Cleated Fence

POSTS 5½" square

HEIGHT 4' H to 6' H

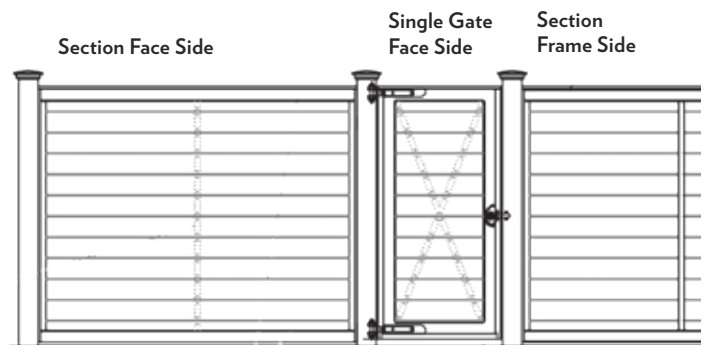
AVAILABLE IN Solid Cellular Vinyl

SHOWN

Top: This stepped horizontal board fence is a superb combination of security and contemporary elegance.

Middle: A single walk gate blends seamlessly with the clean, modern style of the horizontal board fence.

Bottom: Securing the property perimeter, this 5' high fence has also been painted to complement the home's color.



CAPE COD



CONNECTION Stockade Style with 80% round backing rail

POSTS 5" diameter

HEIGHT 4' H to 8' H

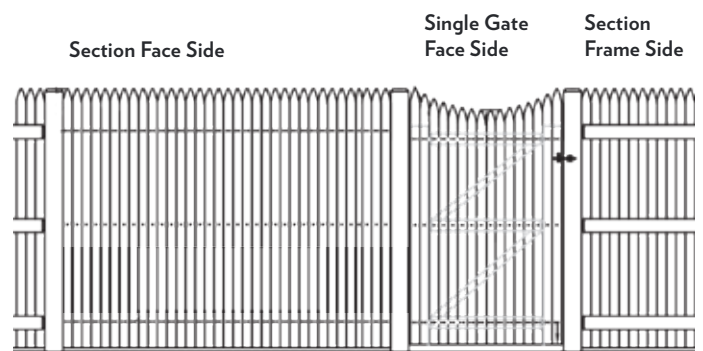
AVAILABLE IN Cedar

SHOWN

Top: A Walpole classic, this traditional screen fence can easily be tailored to your landscaping.

Middle: Detail of a Cape Cod screen fence with an 80-percent round backing rail.

Bottom: A sturdy, workman-like perimeter is presented by this durable, time-tested fence.



PRINCETON



CONNECTION Mortise and Tenon

POSTS 5½" square in Solid Cellular Vinyl; 4½" square in Cedar

HEIGHT 4' H to 8' H

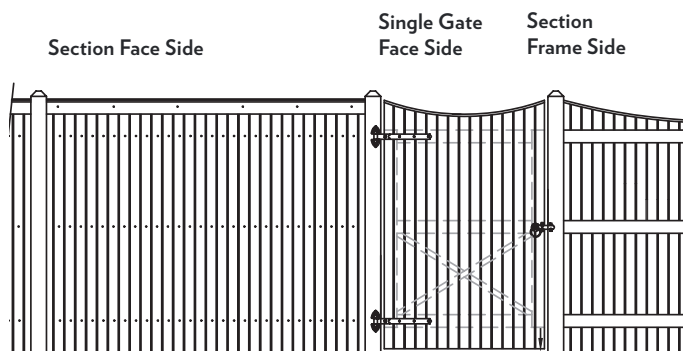
AVAILABLE IN Solid Cellular Vinyl, Cedar

SHOWN

Top: Uniformity of the straight and full sized rail ensures clean lines on the structural side of the fence.

Middle: This elegant screen fence protects your landscape and your privacy with quiet sophistication.

Bottom: Nestled quietly in the trees is a scalloped Princeton fence with beveled post tops.



CHILMARK



CONNECTION Mortise and Tenon

POSTS 4½" square and 5½" square

HEIGHT 3' H to 8' H

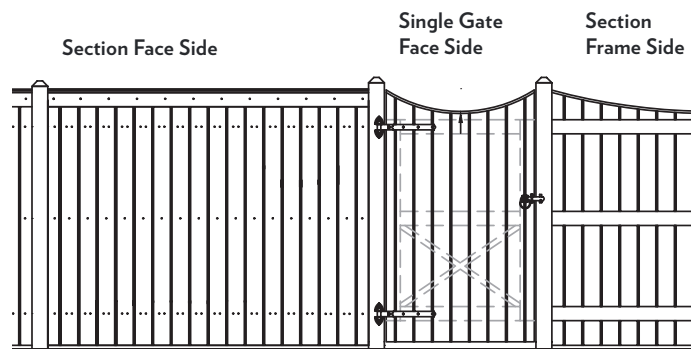
AVAILABLE IN Cedar

SHOWN

Top: Handcrafted in hardy cedar, this privacy board fence stands 6 feet high with 5.5" square mortised posts and Westport caps.

Middle: This unstained scalloped fence delivers privacy and a secure perimeter. Over time it will weather to a handsome silver gray.

Bottom: This expanse of 6' H Chilmark style fencing secures the property's perimeter while complementing the natural landscape.



SEMI-SCREEN FENCE



Walpole Outdoors' semi-screen fences offer significant privacy, but allow more light and air in to your space. These types of fences either have slender spaces or openings between panels or are board fences with toppers of picket or lattice to create that increased air flow. Whether a charming Diagonal Lattice fence or a Highland Topper on a Universal Board fence, this style presents an excellent opportunity to personalize your fence to your particular purpose.



HORIZONTAL VERTICAL LATTICE

DIAGONAL LATTICE

HORIZONTAL VERTICAL LATTICE TOPPER

DIAGONAL LATTICE TOPPER

YORKTOWN TOPPER

HIGHLAND TOPPER

SPINDLE TOPPER

SHADOWBOX

VICTORIAN LATTICE

VICTORIAN LATTICE TOPPER



HORIZONTAL-VERTICAL LATTICE

With neatly woven straight lines, this lattice has an appealing depth perspective and subtle degree of semi-privacy.

CONNECTION Cleated

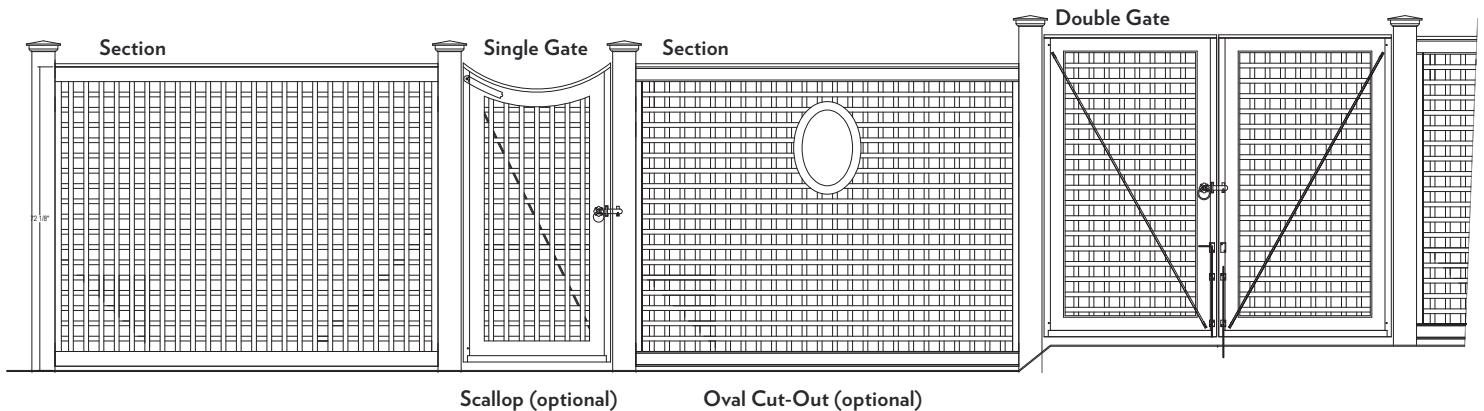
POSTS 5½" square Solid Cellular Vinyl; 4½" square Cedar

OPENINGS 1½", 2½", 3¼", 5"

HEIGHT 3½' H to 8' H

AVAILABLE IN Solid Cellular Vinyl, Cedar

SHOWN This Verde green Horizontal-Vertical Lattice fence with modified opening size blends gracefully into the natural greenery backdrop.



Scalloped (optional)

Oval Cut-Out (optional)



Meticulously crafted lattice sections follow the landscape across the rock wall and are highlighted by a double walk gate and arbor.



This handsome lattice fence with a stately arbor and custom double walk gate provides a beautiful pool safety perimeter.



This lattice fencing is bright, airy, and complements the home's landscape by following along with this stone wall.



DIAGONAL LATTICE

With a pattern of diagonal openings, this fence provides privacy and charm for outdoor spaces.

CONNECTION Cleated

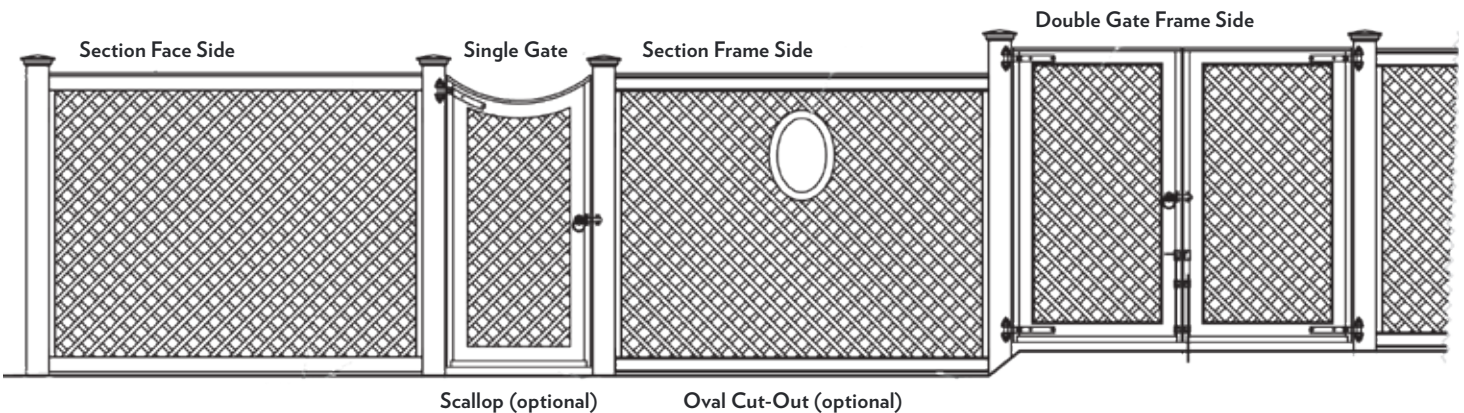
POSTS 5½" square Solid Cellular Vinyl; 4½" square Cedar

OPENINGS 1½", 2½", 3¼", 5"

HEIGHT 3½' H to 8' H

AVAILABLE IN Solid Cellular Vinyl, Cedar

SHOWN The perfect backdrop for flowering plants, this Diagonal Lattice fence features 2.5" diagonal openings and a custom walk gate.





Enclosing this beautiful garden, a Verde green Diagonal Lattice fence blends naturally with the accompanying plantings.



This 4' high Diagonal Lattice fence has 1.5" diagonal openings and features a convex scallop top double gate.



In a fluid arrangement, these Lattice fence panels with 2.5" diagonals are stepped and contoured to the grade.

HORIZONTAL-VERTICAL LATTICE TOPPER



CONNECTION Cleated Fence to sit on Universal and Traditional Fence

HEIGHT 18" and 24" (topper)

MATERIAL Solid Cellular Vinyl, Cedar

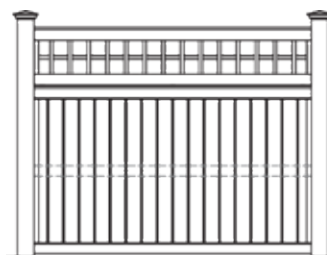
SHOWN

Top: This Universal Gate and Lattice Topper provides privacy and open airy space.

Middle: This board fence with 2' Lattice Topper is designed to create privacy around a home's patio.

Bottom: An 18" Lattice Topper with 5" openings is ideal on this unstained, stepped Universal Board fence.

Straight Top Section



Scallop Top Section



DIAGONAL LATTICE TOPPER



CONNECTION Cleated Fence to sit on Universal and Traditional Fence

HEIGHT 18" and 24" (topper)

MATERIAL Solid Cellular Vinyl, Cedar

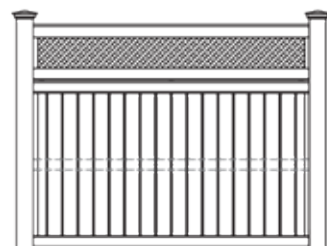
SHOWN

Top: A Universal fence with Diagonal Lattice Topper continues smoothly with a concave scallop top gate.

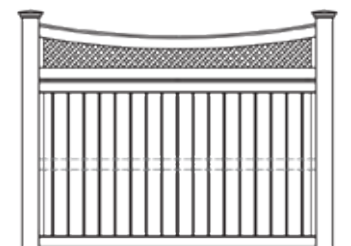
Middle: This unstained fence with 18" Diagonal Lattice Topper and straight top gate creates a light, airy privacy.

Bottom: This 2' high, 1.5" Diagonal Lattice Topper works nicely with a convex scallop gate.

Straight Top Section



Scallop Top Section



YORKTOWN TOPPER



CONNECTION Cleated Fence to sit on Universal and Traditional Fence

HEIGHT 18" and 24" (topper)

MATERIAL Solid Cellular Vinyl, Cedar

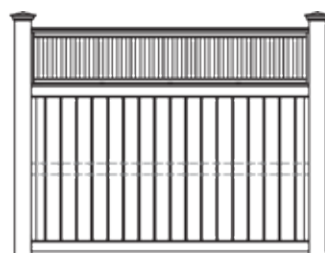
SHOWN

Top: This 4.5' high Universal Board fence with 18" Yorktown Topper features a discrete gate.

Middle: A double gate fits seamlessly with this 2' Yorktown topper that secures the property perimeter.

Bottom: A Yorktown gate with an arbor is a perfect fit for this Yorktown Topper fence.

Straight Top Section



Scalloped Top Section



HIGHLAND TOPPER



CONNECTION Cleated Fence to sit on Universal or Traditional Fence

HEIGHT 18" and 24" (topper)

MATERIAL Solid Cellular Vinyl, Hollow Vinyl, Cedar

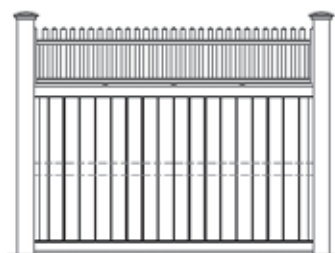
SHOWN

Top: This 4.5' high Traditional fence features an 18" scalloped Highland topper with a matching gate.

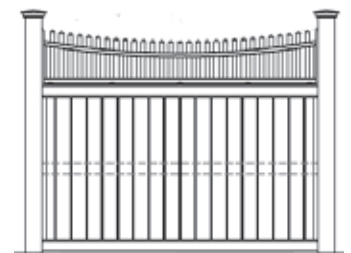
Middle: Here, a stepped Universal Board fence with 18" Highland topper features a seamless single gate.

Bottom: This 4' high Universal fence features an 18" tall Highland topper with a specially crafted slanted end section.

Straight Top Section



Scalloped Top Section



SPINDLE TOPPER



CONNECTION Cleated Fence to sit on Universal and Traditional Fence

HEIGHT 18" and 24" (topper)

MATERIAL Solid Cellular Vinyl

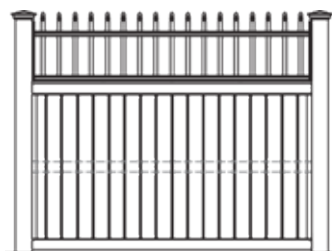
SHOWN

Top: An elegant 24" high Cambridge Spindle Topper sits atop this Universal fence.

Middle: This Cambridge Spindle Topper was designed just for this property's custom fence.

Bottom: This board fence features a spindle topper painted in a custom color, designed to complement the color and style of the home's architecture.

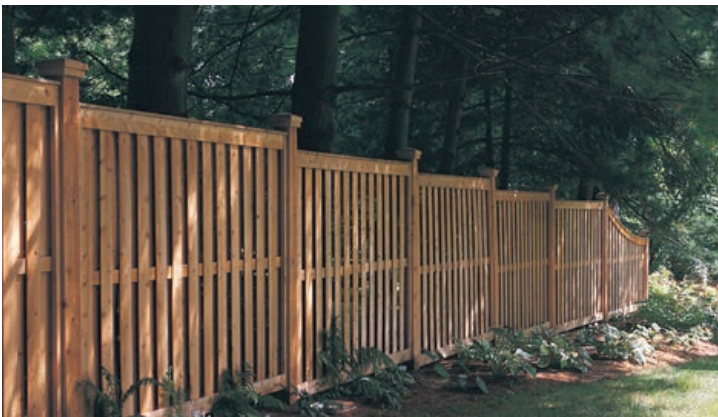
Straight Top Section



Scalloped Top Section



SHADOWBOX



CONNECTION Cleated Fence

POSTS 5½" square

HEIGHT 4' H to 6' H

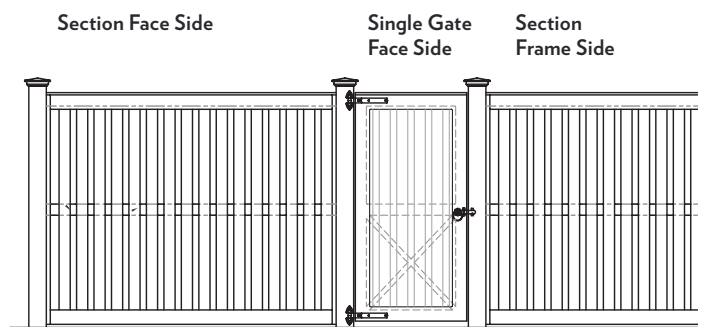
MATERIAL Solid Cellular Vinyl, Cedar

SHOWN

Top: The Shadowbox vertical boards present a charming profile. Carefully spaced, they allow ventilation and light while providing a sense of privacy.

Middle: A 6' high privacy fence steps to 4.5' to smoothly comply with the grade.

Bottom: An ideal neighborly fence where yards closely abut.



VICTORIAN LATTICE



CONNECTION Cleated Fence

POSTS 4½" square in Cedar; 5½" square in Solid Cellular Vinyl

HEIGHT 3½' H to 8' H

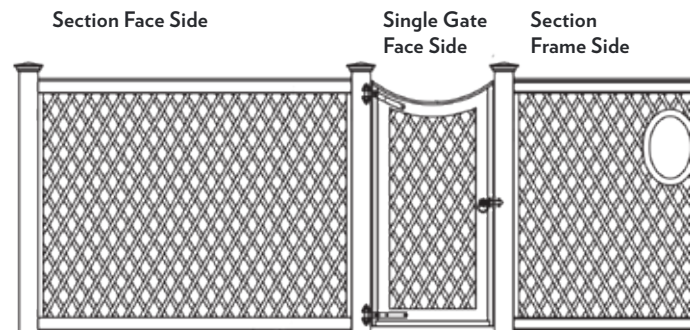
MATERIAL Solid Cellular Vinyl, Cedar

SHOWN

Top: A Verde green Victorian Lattice fence blends naturally with the accompanying plantings in this urban setting.

Middle: Featuring a double walk gate, this Victorian Lattice fence provides a charming property divider.

Bottom: This Victorian Lattice fence with 3" sphere tops is stained appropriately for an historical home.



VICTORIAN LATTICE TOPPER



HISTORICAL FENCE REPRODUCTION

Over the years, Walpole craftsmen have worked closely with local groups, government departments, and discerning private homeowners to replicate fence of historical significance that is true to the original and first quality construction.



Top: Linden House Bottom: Miss Porter's School

CONNECTION Cleated Fence to sit on Universal and Traditional Fence

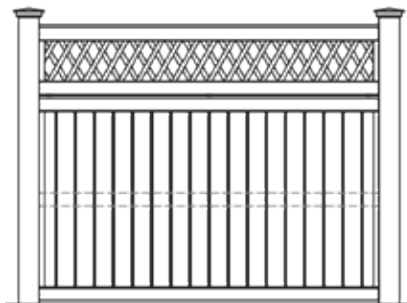
HEIGHT 18" and 24" (topper)

MATERIAL Solid Cellular Vinyl, Cedar

SHOWN

Careful consideration of this historic home's style led to a fine choice of a 2' high Victorian Topper with a stepped Universal Board fence.

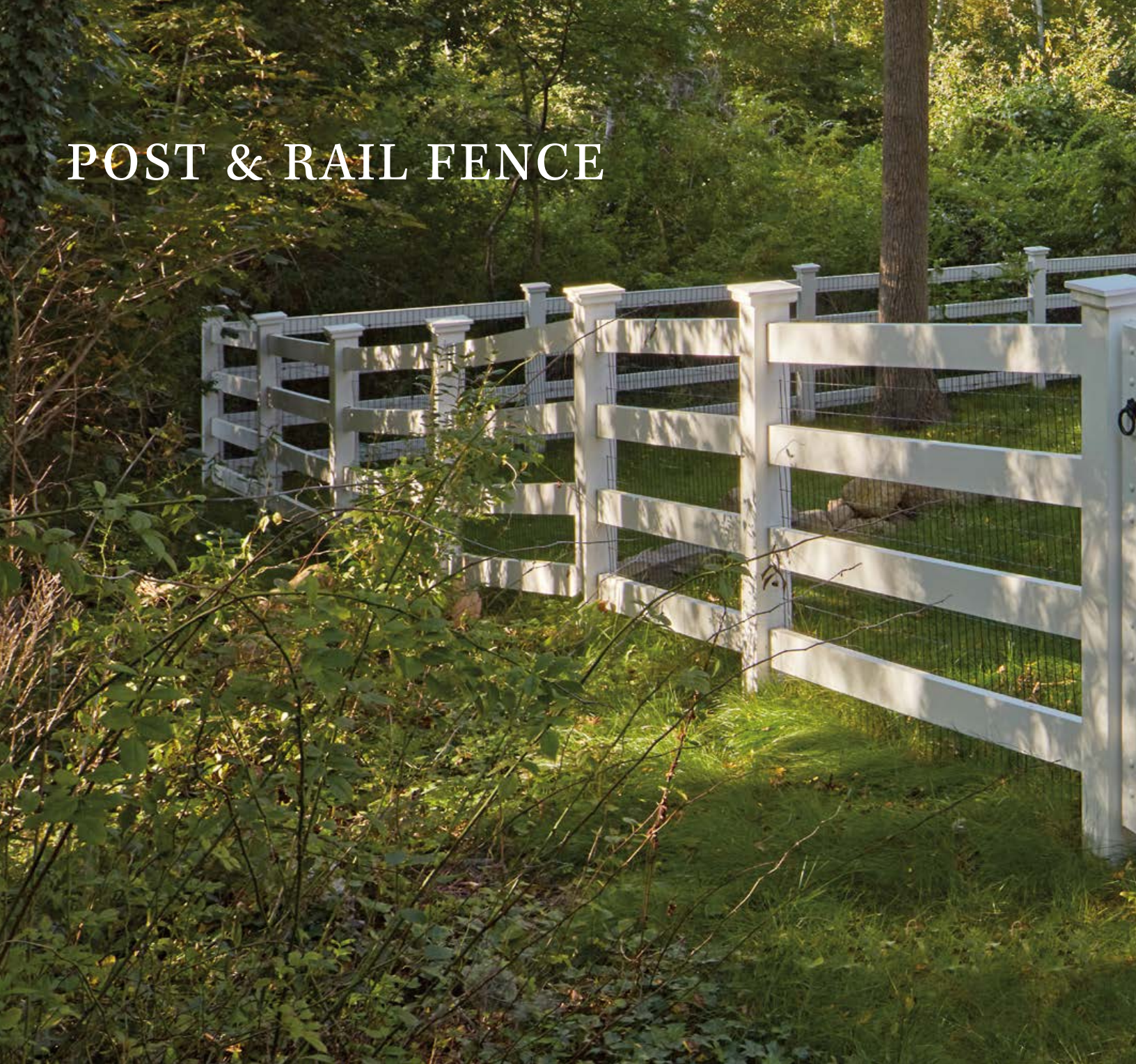
Straight Top
(also available with Scallop top)



Gate with Reverse Scallop
(as shown in photo)



POST & RAIL FENCE



The simple elegance of a Post & Rail fence makes this a great choice for marking the boundaries of a property or containing horses and livestock. It looks friendly and welcoming, while still allowing open views. This fence type, available in several styles, is comprised of large vertical posts that stand perpendicular to two or more horizontal rails attached to those posts.



MORGAN
MANCHESTER
KENTUCKY

YARMOUTH
EASTHAM
ORLEANS



MORGAN

Originally designed to contain horses or livestock, this fence is sturdy, yet beautiful enough for any pastoral setting.

RAILS 1½" x 5½"

POSTS 5½" square

OPENINGS 1½", 2½", 3¼", 5"

HEIGHT 2 Rails: 3' H; 3 Rails: 3½' H, 4' H, 5' H; 4 Rails: 5' H

AVAILABLE IN Solid Cellular Vinyl, Cedar

SHOWN Bordering this wooden property is a pool compliant modified 4-rail Morgan fence. It is reinforced with sturdy horizontal/vertical wire mesh to discourage wildlife. The fence is 5' high with 5.5" posts and Colonial style post caps, as well as a 36" single walk gate.

Three-Rail Section

Single Gate

Double Gate





With its unpretentious lines, a three-rail Post & Rail fence is a welcome addition to any pasture area.



Dignified and airy, this 3-rail fence with a double walk gate has a country look and feel that blends with a natural landscape.



The Morgan fence is a handsome example of the sturdy, reliable meadow fence found throughout our rural countryside.



MANCHESTER

A sturdy, orderly fence that defines a landscape or driveway with authority.

RAILS 3½" square

POSTS 5½" square

OPENINGS 1½", 2½", 3¼", 5"

HEIGHT 2 Rails: 2½' H; 3 Rails: 3½' H, 4'H

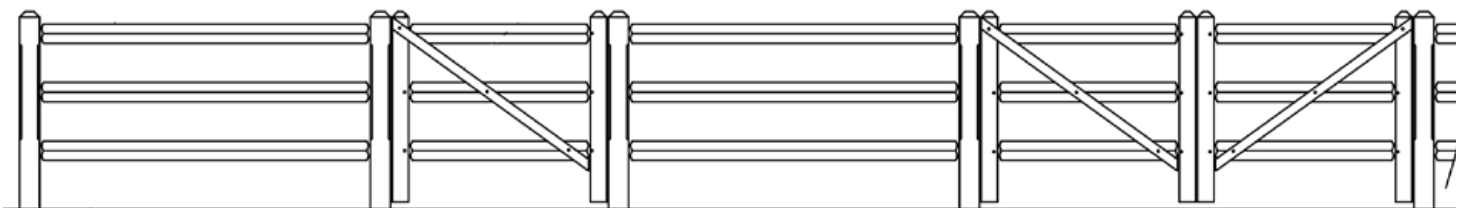
AVAILABLE IN Cedar, Hollow Vinyl

SHOWN The Manchester post-and-rail is classically proportioned perimeter fencing that defines a property line along a road, driveway, or around the garden with confidence. This impressive rail fence with Westport caps sweeps around the manicured lawn to meet the Walpole lantern post at the home's entrance.

Three-Rail Section

Single Gate

Double Gate





This 3' high hollow vinyl Manchester fence features 7" square, solid vinyl accent end posts that reflect the entranceway columns.



This two-rail cedar fence features smooth 5.5" square posts with Westport Caps and will weather gradually to a silvery gray.



With its unpretentious lines, a 3' high, two-rail Manchester fence with Southport caps defines a driveway elegantly and effectively.

KENTUCKY



RAILS 1½" x 5½"

POSTS 5½" square with X-Brace

HEIGHT 2 Rails: 3' H, 3½' H, 4' H

MATERIAL Solid Cellular Vinyl

SHOWN

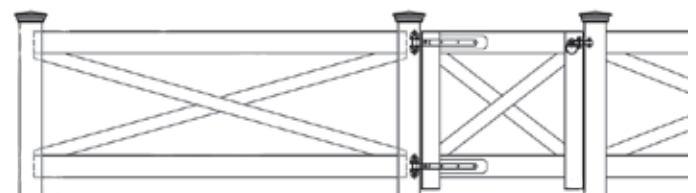
Top: This Kentucky fence subtly incorporates wire mesh to secure the family's swimming pool area. Matching double gates have pool code compliant quality strap hinges and a Magna latch.

Middle: Here the Kentucky Post & Rail accents the entryway into a residential community.

Bottom: A distinctive rhythmic pattern is the hallmark of this classically elegant fence.

Section Face Side

Single Gate



YARMOUTH



RAILS 3" to 4" diameter with tenons

POSTS 5" diameter posts with pre-drilled tenon holes

HEIGHT 2 Rails: 2½' H; 3 Rails: 3' H

MATERIAL Cedar

SHOWN

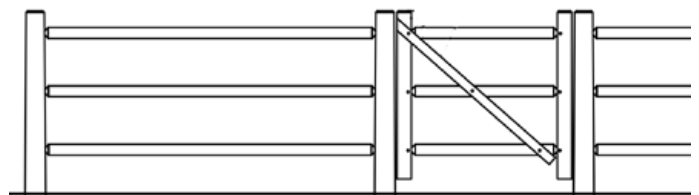
Top: The Yarmouth fence presents a country look that's sized and proportioned to fit unobtrusively into almost any setting.

Middle: The weathered gray Yarmouth fence blends naturally into this garden setting.

Bottom: A 3' high, three-rail fence encloses a garden area and creates a pathway through a series of arbor arches.

Three-Rail Section

Single Gate



EASTHAM



RAILS Split hardwood with scarfed ends

POSTS Pre-drilled Locust Posts

HEIGHT 2 Rails: 3' H; 3 Rails: 4'H

MATERIAL Cedar

SHOWN

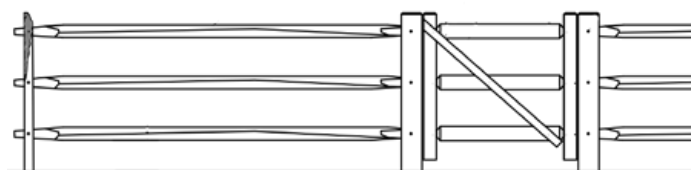
Top: This 4' high 3-rail fence and Garden Arbor with single gate create a seamless border for this serene backyard space.

Middle: With this rambling landscape, a 3-rail fence creates an unobtrusive perimeter boundary.

Bottom: This classic 3-rail Eastham fence with wire is a natural in this wooded setting.

Three-Rail Section

Single Gate



ORLEANS



RAILS 3" to 4" diameter with scarfed ends

POSTS Pre-drilled 6" diameter posts

HEIGHT 2 Rails: 3' H; 3 Rails: 4' H

MATERIAL Cedar

SHOWN

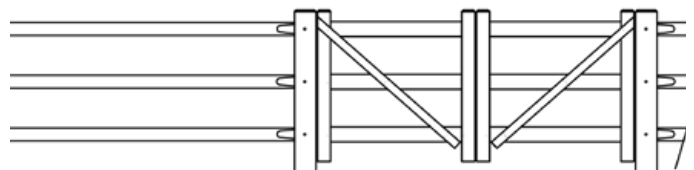
Top: The Orleans 2-rail fence with double gate works in harmony with its natural surroundings. Handcrafted in hardy cedar, the fence will weather to a handsome gray.

Middle: Rural areas throughout North America are graced by expanses of practical, sturdy, post and rail fence like this 4' high 3-rail Orleans.

Bottom: This Orleans fence naturally defines the perimeter of a wooded property. The two-rail fence has square-topped vertical posts and horizontal posts with scarfed ends for style and fit.

Three-Rail Section

Double Gate



FENCE WITH WIRE



The Fence with Wire style offers the significant benefit of unobstructed views. These mesh fences add dignity to a practical solution, featuring fabricated panel sections that are cleated and fastened securely to wood or solid cellular vinyl posts. Not only do they create views free from pickets or boards, the mesh also serves to protect gardens and plantings from foraging animals.



SAG HARBOR

POST & RAIL WITH WIRE

See previous section for examples.



SAG HARBOR

A mesh fence with panel sections, the Sag Harbor has sleek lines and contemporary framing.

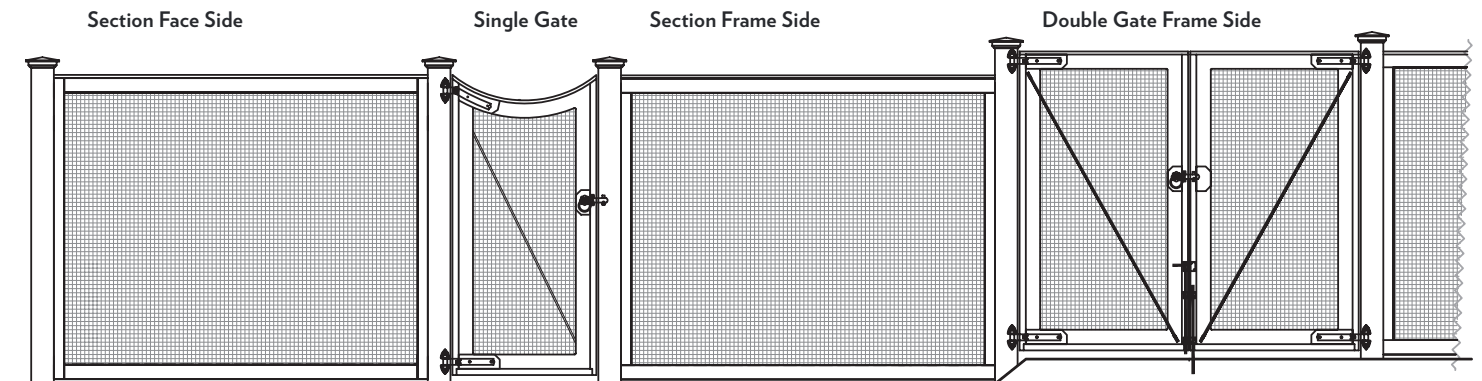
CONNECTION Cleated

POSTS 4½" square Cedar, 5½" square Solid Cellular Vinyl

HEIGHT 3.5' H - 6' H

AVAILABLE IN Solid Cellular Vinyl, Cedar

SHOWN This stepped 4' high fence in the Walpole Outdoors Sag Harbor style has 1" by 1" wire mesh securely attached to the posts and rails, ensuring that it complies with pool safety codes. The fence is fabricated in panel sections and cleated and fastened to the 5.5" square posts with Colonial post caps.





Offering an unobstructed view of the surrounding landscape, this fence has internal wrapped wire mesh inserts.



Ideal for enclosing a private outdoor space is the handsome Sag Harbor fencing, seen here with a custom double gate.



This stepped fence with 1" x 1" black wire mesh and Colonial post caps blends gracefully with the home's architecture.

METAL FENCE



Walpole Outdoors is proud to partner with Ameristar, the world's largest manufacturer of metal fence, to provide the ideal combination of beauty and security in a metal fence. Neat, trim lines make these steel and aluminum fences an ideal border for any property.



ECHELON
MONTAGE

ECHELON



PICKET ¾" square

POSTS 2½" square

HEIGHT 3' H - 6' H

MATERIAL Aluminum

SHOWN

Top: Our maintenance free three-rail Echelon Plus Conqueror has a smooth top rail with alternating picket.

Middle: A smooth top rail identifies our sturdy four-rail Majestic style. This Echelon Plus fence with attractive decorative rings is offered in heights to meet pool safety codes.

Bottom: The Echelon Plus, shown here in the Majestic style, is the strongest aluminum fence on the market.

MONTAGE



PICKET 3/4" square or 5/8" square

POSTS 2" or 2 1/2" square

HEIGHT 3' H - 6' H Residential; 7' H - 8' H Commercial

MATERIAL Steel

SHOWN

Top: If your property demands a fence with a more traditional ornamental iron appearance, the Majestic three-rail with 3/4" pickets will complement your architecture superbly.

Middle: Our welded steel Montage Classic is shown here with all terrain flexibility, allowing the fence to follow the grade of the property over rough and uneven ground.

Bottom: Following a long sweeping curve and anchored securely to brick posts, the three rail Montage Classic fence provides a sophisticated perimeter boundary.

CUSTOM DESIGN FENCE



Walpole Outdoors offers an unequalled choice in fence styles—from picket and functional post and rail, to privacy, semi-screen and more. We understand, however, that for many customers a custom design will better suit their particular style, landscape, or home architecture. Our craftsmen and expert design consultants are here to lend their skill and experience to ensure that your fence is everything you want it to be—and more.



CUSTOM DESIGN



Herringbone Design Board Fence



Custom Glass Panel Fence and Gate



Custom Lattice Over Lattice Fence in Iron Ore



Custom Horizontal Wood Privacy Fence



Louvered Privacy Fence

WalpoleOutdoors.com



RAILINGS

Add grace and elegance around your porch, balcony, pool, or terrace with secure, stylish outdoor railings crafted and installed by Walpole Outdoors. We offer contemporary and historical designs, as well as standard and customized railings and caps that complement your existing architecture or bring your creative ideas to life.



JAMESTOWN
PENDLETON

CUSTOM



RAILINGS

STANDARD DESIGN

PENDLETON

Available in widths of 3' and 3.5'

JAMESTOWN

Available in heights of 3' and 3.5'

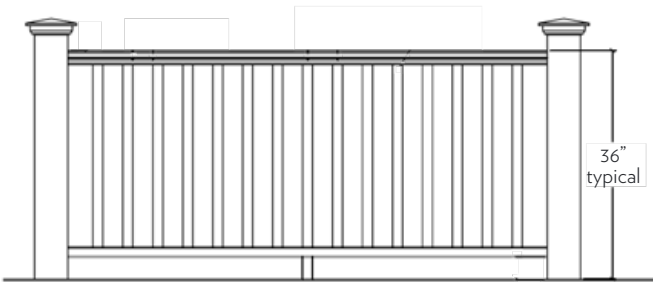
The Pendleton has thin yet sturdy rails for a look that complements homes with a more modern architecture. The Jamestown has bolder lines with defined rails top and bottom.





Pendleton

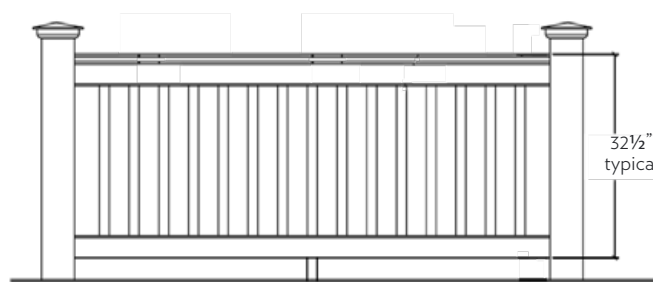
Pendleton Railing



36" typical

Any section over 6' long requires center support.

Jamestown Railing



32 1/2" typical

Any section over 6' long requires center support.

RAILINGS CUSTOM DESIGN



Chippendale Railing



Historic Replication Railing



Custom Victorian Porch Railing



Pendleton Railing with Chippendale Panels



Tri-Colored Historic Railing

WalpoleOutdoors.com



ENCLOSURES

Walpole offers handcrafted enclosures designed to meet your needs—from protecting your garden to corralling wayward tennis shots and hiding generators. These fences that follow function will more than match your outdoor requirements.



SHOWER
GARDEN
UTILITY

POOL
COURT

SHOWER ENCLOSURES

STANDARD DESIGN

BARNSTABLE

Single shower stall - 77" H, 45" W, 50.5" D

SANDWICH

Single shower stall - 77" H, 72" W, 50.5" D

CHATHAM

Single shower stall + changing area - 77" H, 96" W, 74.25" D



Barnstable Attached Shower



Sandwich Attached Shower

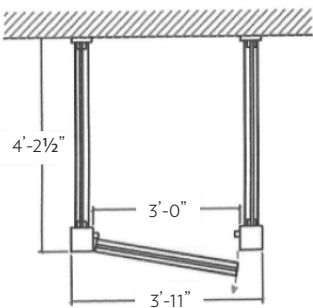


Chatham Attached Shower

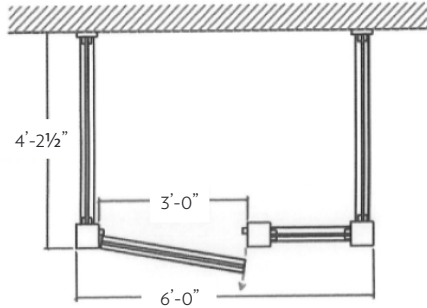


Chatham Attached Shower

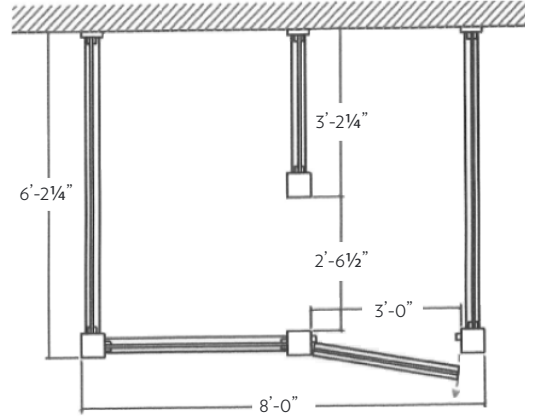
Barnstable (Attached)



Sandwich (Attached)



Chatham (Attached)



SHOWER ENCLOSURES CUSTOM DESIGN



Pergola Top Shower Enclosure



Custom Freestanding Shower Enclosure



Pergola Top Shower Enclosure



Custom Shower Enclosure with Lattice Topper

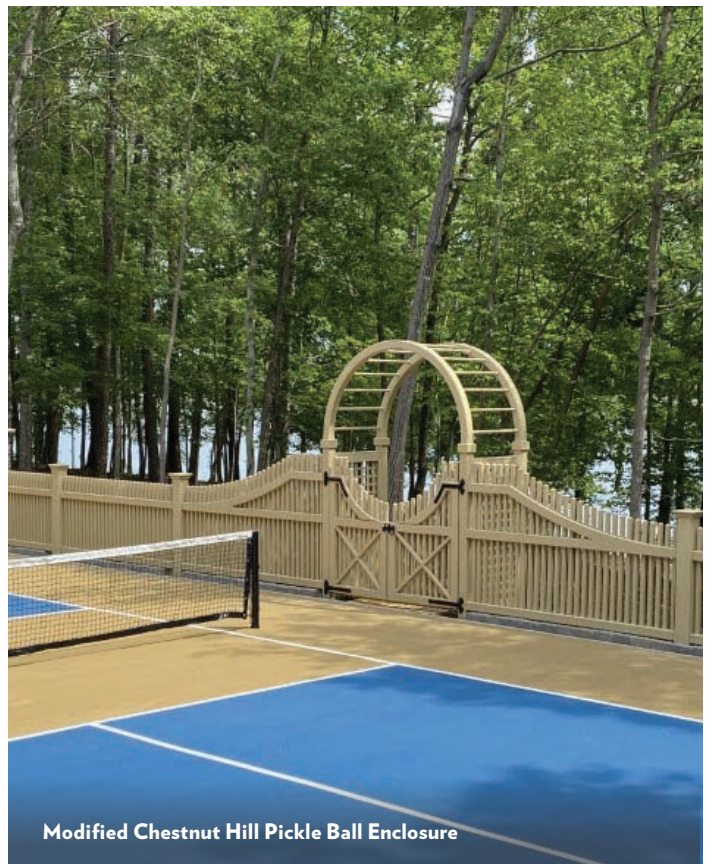
COURT ENCLOSURES



Custom Verde Green Tennis Enclosure



White Lattice Tennis Court Enclosure



Modified Chestnut Hill Pickle Ball Enclosure



Custom Western Red Cedar Tennis Enclosure

POOL ENCLOSURES



Sag Harbor Pool Enclosure



Universal Board with Lattice Topper Pool Enclosure



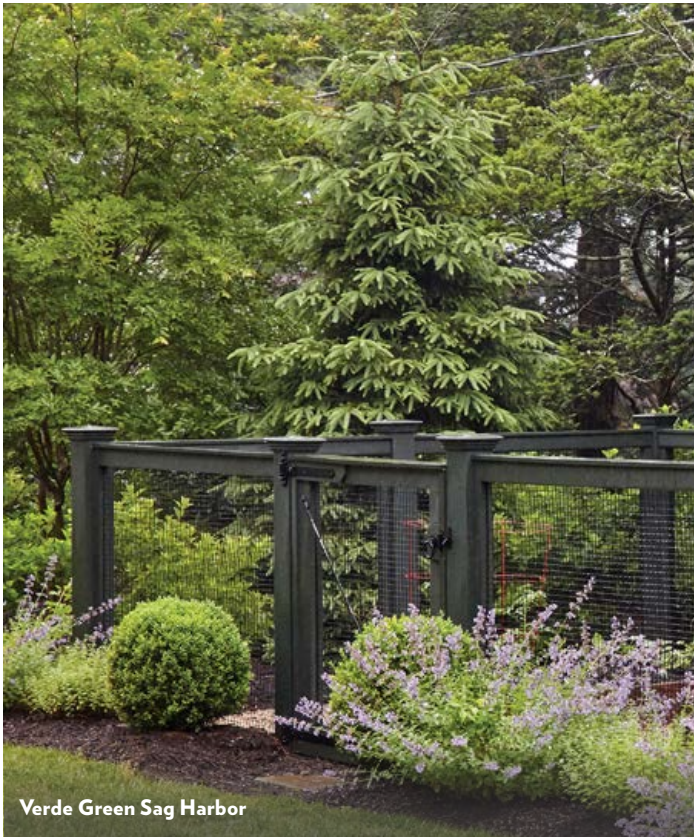
Yorktown Pool Code Fence



Richmond Picket Pool Code Fence

WalpoleOutdoors.com

GARDEN ENCLOSURES



Verde Green Sag Harbor



Sag Harbor with Chippendale Gate



Westchester Picket Fence Enclosure



Western Red Cedar Lattice Garden Enclosure

UTILITY ENCLOSURES



Horizontal Vertical Lattice Enclosure



Horizontal Universal Utility Enclosure



Universal Board with Yorktown Topper Utility Enclosure



ARBORS & PERGOLAS

From classically beautiful styles to contemporary designs or whimsical structures, Walpole arbors and pergolas capture the imagination in any outdoor location. Choose from handcrafted, made to order standard products or create a custom piece that reflects your specific vision.



STANDARD ARBORS
CUSTOM ARBORS

STANDARD PERGOLA KITS
CUSTOM PERGOLAS



Sheffield

ARBORS STANDARD DESIGN

BROOKFIELD ARBOR

Available in widths of 4', 4.5' and 6'

GARDEN ARBOR

Available in widths of 3.5', 4', 4.5' and 6'

SHEFFIELD ARBOR

Available in widths of 4.5' and 6'

SPINDLE TOP ARBOR

Available in widths of 3.5', 4', 4.5' and 6'

ARCHED ARBOR

Available in widths of 4.5' and 6'



Garden



Arched

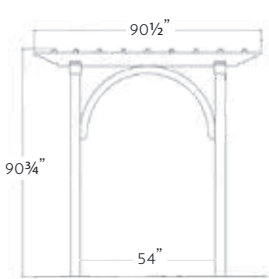


Spindle Top

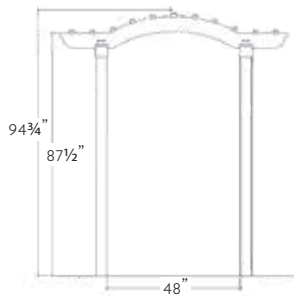


Brookfield

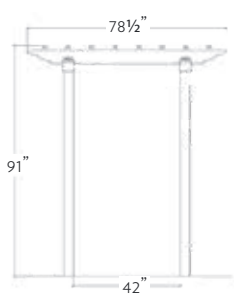
Arched Arbor 4.5' W



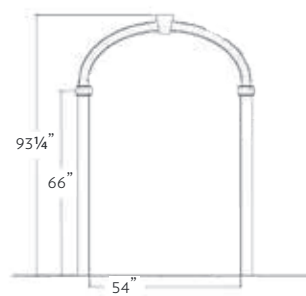
Brookfield Arbor 4' W



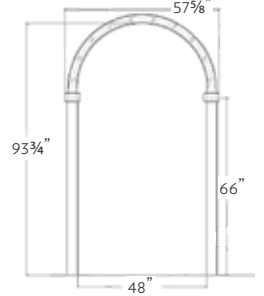
Garden Arbor 3.5' W



Sheffield Arbor 4.5' W



Spindle Top Arbor 4' W



ARBORS CUSTOM DESIGN



Single Arch Entry Arbor



Gateway Pergola Arbor



Formal Arbor with Bench



Moon Arbor and Gate



Custom Pergola with Lattice Side Panels

PERGOLA KITS

STANDARD DESIGN

APOLLO OPENING ROOF PERGOLA

Available in sizes 10'x10' to 10'x16'

ARCHED TOP FREESTANDING PERGOLA

Available with round and square columns; various sizes 10' to 15.5'

LOCKHART FREESTANDING PERGOLA

Available with privacy panel; various sizes 10' to 15.5'

NATURAL WESTERN RED CEDAR PERGOLA

Available in various sizes 10' to 14'

STRAIGHT TOP FREESTANDING PERGOLA

Available with round and square columns; various sizes 10' to 15.5'

STRAIGHT TOP ATTACHED PERGOLA

Available with round and square columns; various sizes 10' to 15.5'



Arched Top Pergola with Round Columns



Attached Straight Top Pergola with Round Columns



Straight Top Pergola with Square Columns



Lockhart Pergola with Privacy Panel



Apollo Opening Roof Pergola



Western Red Cedar Pergola

FREESTANDING PERGOLAS CUSTOM DESIGN



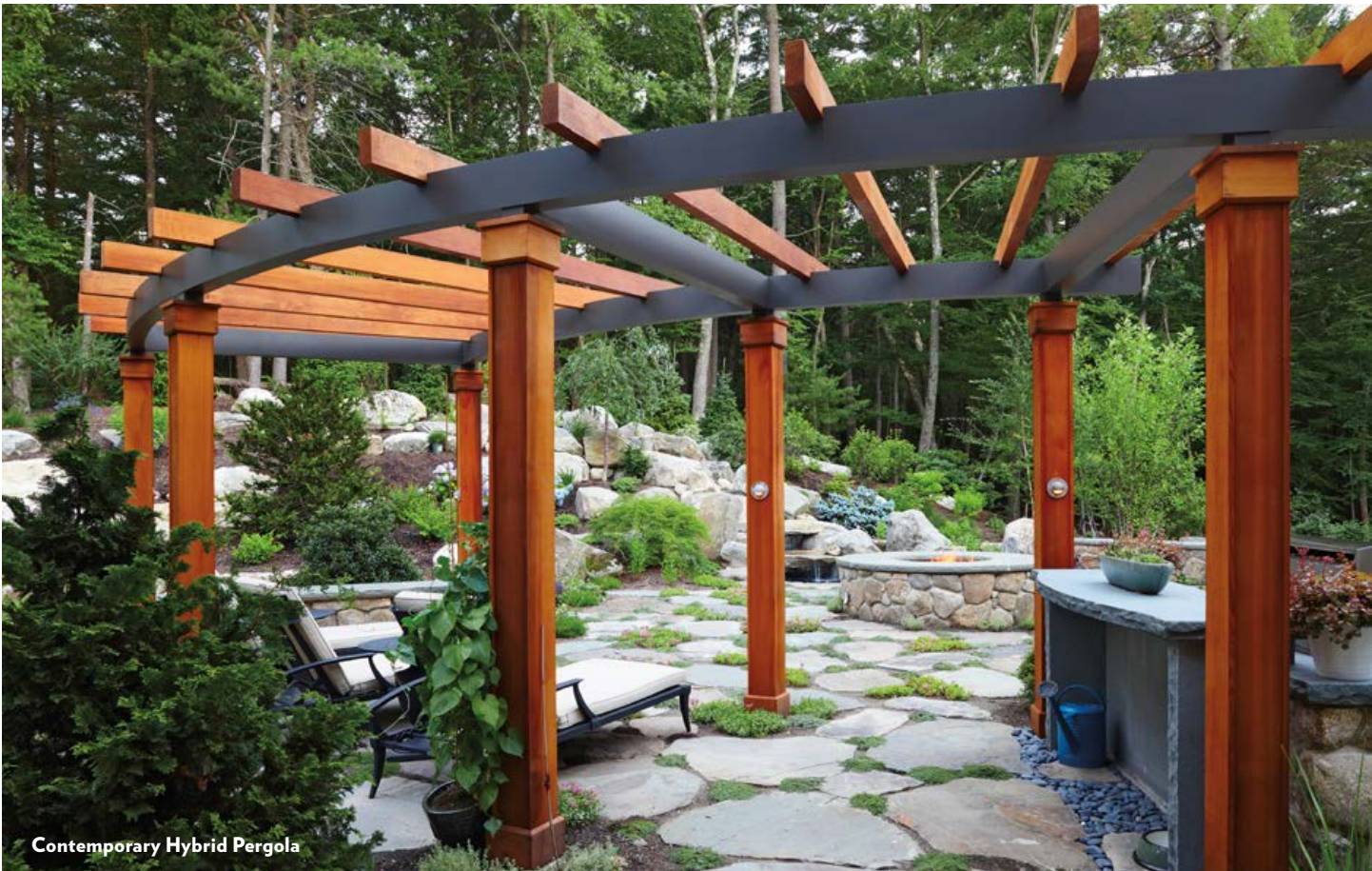
Custom Backyard Radius Pergola



Custom Freestanding Outdoor Kitchen Pergola



Custom Hybrid Apollo Pergola



Contemporary Hybrid Pergola



Custom Freestanding Pergola



Custom Stepped Pergola



Roof Deck Pergola

ATTACHED PERGOLAS CUSTOM DESIGN



Custom Attached Entrance Pergola



Custom Rooftop Attached Pergola



Custom Attached Orchid Pergola

SHADE CANOPIES

UNDERSIDE CANOPY FOR STRAIGHT TOP
Available in various sizes and colors

UNDERSIDE CANOPY FOR ARCHED TOP
Available in various sizes and colors

DROP SCREEN SIDE SHADE
Available in various sizes and colors

APOLLO MOTORIZED TOP OPENING
Available in various sizes and colors



Underside Canopy for Straight Top Pergola



Underside Canopy for Arched Top Pergola



Underside Canopy with Drop Screen Side Shades



Underside Canopies



Apollo Motorized Top Opening



Drop Screen Side Shade with Apollo Motorized Top Opening



GATES

From formal to rustic, antique reproduction to contemporary, Walpole has a gate style to welcome every entrance. Standard designs are available in several options, or our gates can be custom crafted with spindles, pickets, or boards to any size and style you choose.



STANDARD WALK GATES
CUSTOM WALK GATES
GATE HARDWARE

STANDARD DRIVE GATES
CUSTOM DRIVE GATES



SCAN TO VIEW FULL
DRIVEWAY BROCHURE



WALK GATES

STANDARD DESIGN

BASKING RIDGE GATE
5"H, 4'W and 92" overall height with arch
Available in Verde Green or White

CHELSEA PICKET GATE
With Nantucket picket
Available in widths and heights of 3' and 3.5'

HAMPTON SINGLE GATE
Available in widths of 3.5' and 4'
(pictured with Spindle Top Arbor)

HAMPTON DOUBLE GATE
Available in widths of 4.5' and 6'
(pictured with Spindle Top Arbor)





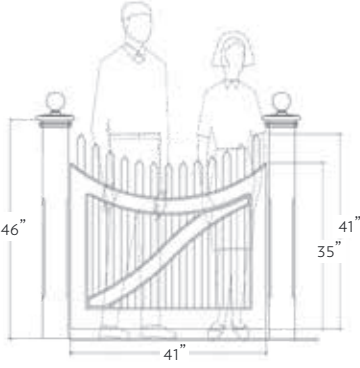
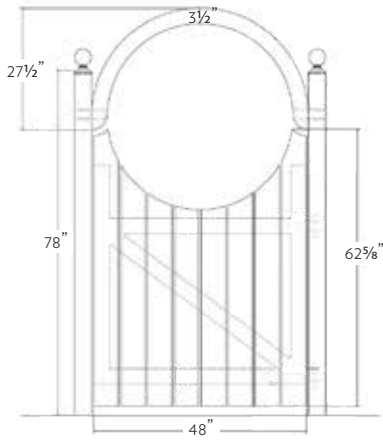
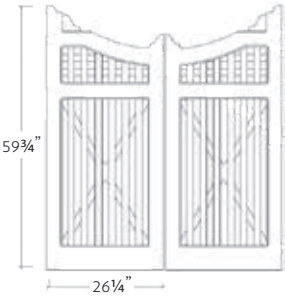
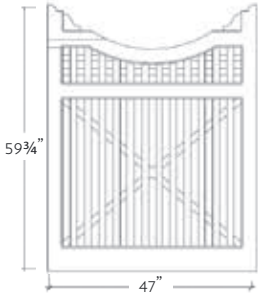
Chelsea Picket Gate

Basking Ridge Gate

Chelsea Picket Gate
3.5 W x 3.5 H

Single Hampton Gate 4' W

Double Hampton Gate 4.5' W



WALK GATES CUSTOM DESIGN





Custom Walk Gate for Urban Courtyard

GATE HARDWARE

HINGES

Curved and Straight Strap Hinge Pair in Black, 12" or 16" (A)
Straight Strap Hinge Pair in Black or Galvanized, 7" or 12" (B)

LATCHES

Top Pull Magna Latch in White or Black (C)
Gravity Latch in Black or Brushed Stainless (D)
Ring Gate Latch in Black or Galvanized (E)

GATE STOP

Powder Coated Stainless Steel Gate Stop in White or Black (F)

CANE BOLT

18" Cane Bolt in White or Black (G)

GATE CLOSERS

Canon Ball Closure in Black and Closure Post in Cedar or White (H)
Self Closing Spring in Black (I)



Canon Ball Closure in Black
Closure Post in White



Ring Gate Latch (front view) in Black
Gate Stop in Black



Curved & Straight Strap Hinge Pair in Black
Top Pull Magna Latch in White
Self Closing Spring in Black



DRIVEWAY GATES

STANDARD DESIGN

PANELED BOTTOM WITH PICKET TOP

Available in widths of 12' to 18' and heights of 4' to 8'

CHESTNUT HILL PICKET

Available in widths of 12' to 18' and heights of 4' to 8'

CAPPED PICKET

Available in widths of 12' to 18' and heights of 4' to 8'

UNIVERSAL BOARD

Available in widths of 12' to 18' and heights of 4' to 8'

CHIPPENDALE

Available in widths of 12' to 18' and heights of 4' to 8'



Paneled Bottom with Picket Top



Chestnut Hill Picket



Capped Picket



Universal Board



Chippendale

DRIVEWAY GATES

STANDARD DESIGN

WESTCHESTER PICKET

Available in widths of 12' to 18' and heights of 4' to 8'

UNIVERSAL BOARD WITH LATTICE TOPPER

Available in widths of 12' to 18' and heights of 4' to 8'

HORIZONTAL BOARD

Available in widths of 12' to 18' and heights of 4' to 8'

SINGLE ARM BARRIER

Available in widths of 12' to 20' and heights of 3' to 3.5'

POST AND RAIL

Available in widths of 12' to 20' and heights of 3' to 5'





Horizontal Board



Single Arm Barrier



Post and Rail

DRIVEWAY GATES CUSTOM DESIGN



Custom Wood Drive Gate



Custom Picket Drive Gate



Chippendale Drive Gate with Chestnut Hill Fence



Alaskan Yellow Cedar Drive Gate



Custom Lattice Drive Gate



LATTICE & TRELLIS

Add texture to bare walls or provide elegant privacy to a patio with a Walpole Outdoors lattice, and accent your architecture with a standard or custom trellis. Whether atop windows or over the garage, Walpole trellis promises maximum impact and promotes a truly dignified look.



STANDARD LATTICE
CUSTOM LATTICE

STANDARD TRELLIS
CUSTOM TRELLIS

LATTICE PANELS

STANDARD DESIGN

CAMEO LATTICE PANEL

90" high by 60" wide with 18" high and 12" wide oval cut-out

LATTICE WITH OVAL CUT-OUT

96" high by 48" wide with 18" high and 12" wide oval cut-out

MANHASSET LATTICE PANEL KIT

72" high by 32" wide, delivered in kit form

STANDARD RECTANGULAR LATTICE

Available in widths of 48.5" or 37.5" and heights of 60" or 72"

WOODBURY LATTICE PANEL

Available in widths of 48" or 60" and height of 72"



Lattice with Oval Cut-Out



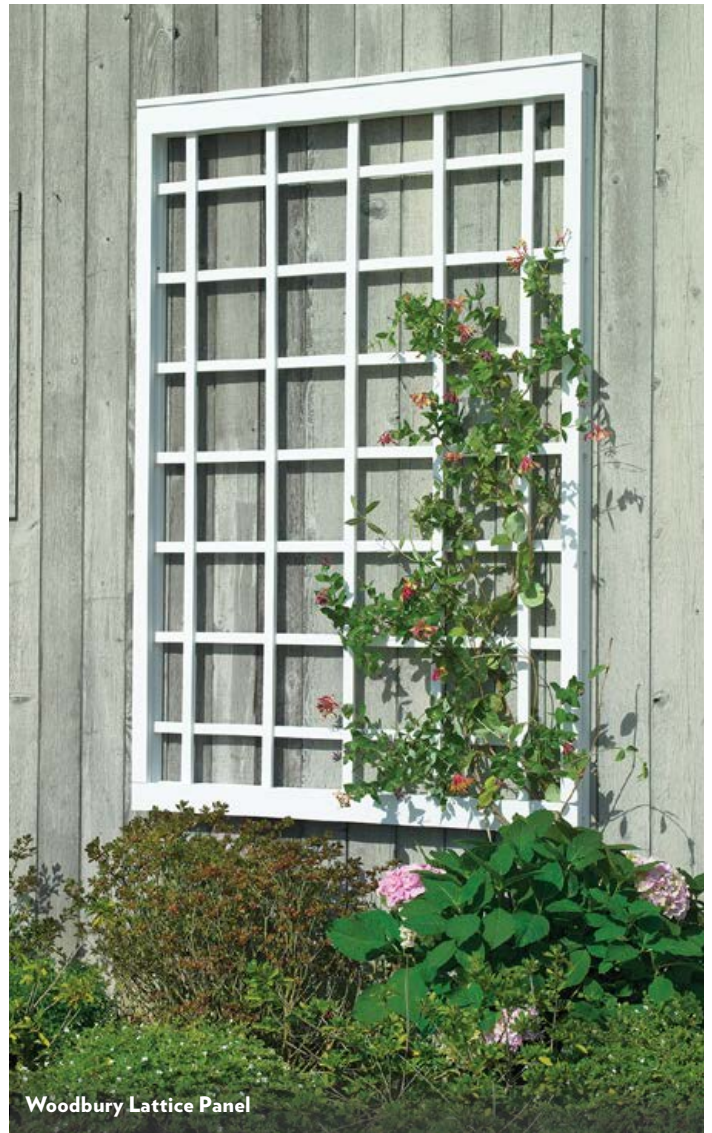
Cameo Lattice Panel



Rectangular Lattice Panel



Manhasset Lattice Panel Kit



Woodbury Lattice Panel



Decorative Ring Kit



Westbury Copper Cap

MANHASSET LATTICE KIT ACCESSORIES

Decorative Ring Kit

Set of five 4 $\frac{5}{8}$ " diameter circles that fit snugly and securely inside any panel opening in the trellis.

Westbury Copper Cap

Copper cap for Manhasset Lattice Panel 3 $\frac{1}{8}$ " H, 34 $\frac{1}{2}$ " W, 5 $\frac{1}{8}$ " D; will weather to a green patina.

LATTICE PANELS CUSTOM DESIGN



Custom Lattice Panels



Courtyard Lattice with Mirror



Custom Cedar Lattice Panel



Custom Lattice Porch Screen



Custom Courtyard Privacy Lattice Panel

TRELLIS

STANDARD DESIGN



Slant Style Trellis



Sheldon Trellis Bracket



Shelf Style Trellis Bracket

MARSTON TRELLIS SYSTEM

*Long-span beams secured by supporting brackets;
Carrying joists with decorative end cut and curved bracket
Specific sizing available*

SHELDON TRELLIS BRACKET

*5.5"W x 36"H x 2"D mounting bracket
3.5" square carrying arm projects 36"*

SHELF STYLE TRELLIS BRACKET

*1.5" x 5.5" notched arm set at 90-degree angle
attached to 21"H x 3.25"W mounting board and projects 26"*

SLANT STYLE TRELLIS BRACKET

*1.5" x 5.5" notched arm set at 35-degree angle
attached to 21"H x 3.25"W mounting board and projects 24"*



Marston Trellis System

TRELLIS CUSTOM DESIGN





Modified Marston Trellis



SELECTIONS

This Fence Catalog does not include everything available from Walpole Outdoors. Our Selections products include outdoor furniture, lights and light posts, signs and sign posts, mailboxes and mail posts, window boxes and planters, birdhouses and feeders, flagpoles, garden gifts, and much more.



SCAN TO VIEW OUR
LOOK BOOK WITH
SELECTIONS ITEMS



Hammond Light Post with Mortised Sign Bracket and Classic Lantern



Dovecote Manor Bird House



Bullnose Window Box



White Liberty Mail Post with Aluminum Strong Mailbox



Austin Light Post with Capture Post Mount Lantern and Elgin Mail Post with Waldo Mailbox



Copper Mailbox



Wimberley Square Planter



Harbor Bells Wind Chimes



Freeport Side Mount Lantern

SCHEDULE YOUR FREE DESIGN CONSULTATION

Walpole Outdoors offers you a free at-home design consultation where a Walpole professional will take measurements and assist you with styles and options, as well as provide insights into the merits of both natural wood and solid cellular vinyl. Share project details and inspiration, supply photos or sketches, and get started with our expert design consultants. Our designers produce detailed drawings and specifications so that you know exactly how your project will look once installed.

To schedule an appointment, contact our store nearest you, or call 781.725.6556.

Find even more inspiration, learn about Walpole's unique capabilities, and purchase items to be shipped nationwide from our online catalog at **WalpoleOutdoors.com**.




Scan to view and download our **2023 Look Book**.



Scan to view and download our **Driveway Gates Brochure**.







SHOWROOM LOCATIONS

Foxborough, MA

Norwalk, CT

Hobe Sound, FL

Jacksonville, FL

Naples, FL

Ormond Beach, FL

Sarasota, FL

Wildwood, FL

East Falmouth, MA

Harwich, MA

Hyannis, MA

Fenton, MO

Bedford, NH

Morris Plains, NJ

Rumson, NJ

East Moriches, NY

Old Brookville, NY

Raleigh, NC

Doylestown, PA

North Charleston, SC

Sterling, VA

Walpole Outdoors™