



Britax PMG Limited

Britax PMG Limited, Bessingby Industrial Estate,
Bridlington, Yorkshire, England YO16 4SJ
t. +44 (0) 1262 670161 f. +44 (0) 1262 605666 e. enquiries@britax-pmg.com

The products detailed in this catalogue represent our current range, and whilst every effort has been made to ensure accuracy of the information supplied, customers are requested to satisfy themselves of the suitability of any products required.

Full terms & conditions available at www.britax-pmg.com



CATAW14

Amber Warning

Beacons & LED modules
Product Catalogue



Britax

Britax is a registered trademark of and used under licence from a member of the Britax group of companies.



Amber Warning

Beacons & LED Modules



Britax PMG Limited is a world-class supplier of mandatory and auxiliary vehicle lighting, amber hazard warning lighting and rear view mirrors to both vehicle Original Equipment Manufacturers (OEMs) and the commercial vehicle after market. Our equipment can be found on all types of vehicle, including cars, vans, trucks, trailers, tractors, buses, coaches, recovery trucks and construction machinery.

Our quality range of beacons, lightbars, lamps, reflectors, switches, mirrors and wiper systems are sold all around the world through a comprehensive network of distributors. As part of the ECCO Safety Group, the company has access to manufacturing facilities in nine locations on four continents, along with an additional four international sales offices in Europe, Australia and China, together employing 900 team-members.

CHOOSING YOUR BEACON	04
THREE BOLT FIXING BEACONS	08
THREE BOLT FIXING LED BEACONS	11
SINGLE BOLT FIXING BEACONS	13
SINGLE BOLT FIXING LED BEACONS	16
PLUG IN BEACONS	19
PLUG IN LED BEACONS	21
MAGNETIC BEACONS	24
MAGNETIC LED BEACONS	27
PLUG IN FLEXI BEACONS	30
PLUG IN FLEXI LED BEACONS	30
NEW STYLE BEACONS	34
ADAPTER SOCKETS & PROTECTIVE CAGE	35
LED WARNING MODULES	36

BRITAX is the registered trademark of, and is used under licence from, a member of the BRITAX group of companies.



Britax PMG Limited
Bessingby Industrial Estate
Bridlington, YO16 4SJ
t. +44 (0)1262 670161
f. +44 (0)1262 605666
e. enquiries@britax-pmg.com
w. britax-pmg.com



Choosing Your Amber Beacon

Style

Britax offer an extensive choice of styles, shapes and fixings. The following images summarise the Britax range and show style and relative height of each of the Britax families of beacons. The heights are based on three bolt fixing options and are for guidance only. Please see the detailed drawing with your beacon of choice.

 <div>B20 SERIES HALOGEN ROTATING 150mm • Dedicated voltage • R65 approved </div>	 <div>B290 SERIES DOUBLE FLASH XENON 179mm • Dual voltage • Double flash</div>
 <div>320 SERIES HALOGEN ROTATING 165mm • Dual voltage • R65 approved </div>	 <div>B50 SERIES LED 150mm • Multi voltage • LED</div>
 <div>370 SERIES HALOGEN ROTATING 188mm • Dual voltage • R65 approved </div>	 <div>B60 SERIES LED 121mm • Multi voltage LED • Compact style</div>
 <div>390 SERIES HALOGEN ROTATING 179mm • Dual voltage • R65 approved </div>	 <div>B70 SERIES LED 188mm • Multi voltage • LED</div>
 <div>B100 SERIES HALOGEN ROTATING 143mm • Supplied less bulb • R65 approved </div>	 <div>B80 SERIES LED 165mm • Multi voltage • LED</div>
 <div>B330 SERIES SINGLE CONTACT BULB 165mm • Specify voltage • Approved for airports </div>	 <div>B90 SERIES LED 179mm • Multi voltage • LED</div>
 <div>B10 SERIES MULTI VOLTAGE XENON 121mm • AC or DC supply • Low voltage directive</div>	 <div>B150 SERIES LED 143mm • New Styling • Dual voltage</div>
 <div>270 SERIES DOUBLE FLASH XENON 188mm • Dual voltage • R65 approved </div>	 <div>B160 SERIES LED 143mm • Dual voltage • R65 approved </div>
 <div>280 SERIES DOUBLE FLASH XENON 165mm • Dual voltage</div>	 <div>B200 SERIES LED 188mm • Dual voltage • R65 approved </div>
 <div>B180 SERIES XENON 143mm • New Styling • Dual voltage</div>	 <div>B310 SERIES LED 140mm • Dual voltage • R65 approved </div>
	 <div>B320 SERIES LED 115mm • Dual voltage • R65 approved </div>

Technical Information

Fixings

BOLT ON (3 BOLT & SINGLE BOLT)
For permanent mounting on the vehicle supplied with drilling template.

PLUG-IN & FLEXI PLUG-IN
The beacon has an integral DIN plug and is mounted onto an industry standard adapter socket. See Britax 13109 series page 35.

MAGNETIC
For temporary use on vehicles with a steel roof. All Britax magnetic beacons have a 2.5mt cable and plug. Maximum speed ratings are marked on the beacon and must be observed.

All Magnetic Beacons require a mating single pole socket, see Electrical Equipment Section.

B24, 324, 394, B334, B14, 274, 284, B294, B54, B64, B74, B84, B94, B204, B314, B324 series beacons include a vehicle **cigar lighter adaptor**.

Fitting

Full fitting instructions supplied. Applicable to UK only.

Every warning beacon/lightbar shall be so mounted on the vehicle that the centre of the lamp is at a height not less than 1200mm above the ground.

The light shown from the beacon/lightbar(s) shall be visible from any point at a reasonable distance from the vehicle or any trailer being drawn by it. Amber is the ONLY permitted colour in the UK unless an emergency services vehicle (blue) or registered GMC medical practitioner (green).

The beacon/lightbar base should be parallel with the ground and fitted to the flattest part of the vehicle roof, on the longitudinal centre line across the vehicle.

When fitting a beacon/lightbar to a vehicle with Radio equipment, the distance to the aerial should not be less than 500mm.

It is good practice to route product supply cables away from sensitive cables (e.g. radio, aerials, anti-lock braking systems etc). If this is not possible, cross cables at right angles.

CAUTION - Observe current consumption and choose cable, relay, switch and fuse as required.

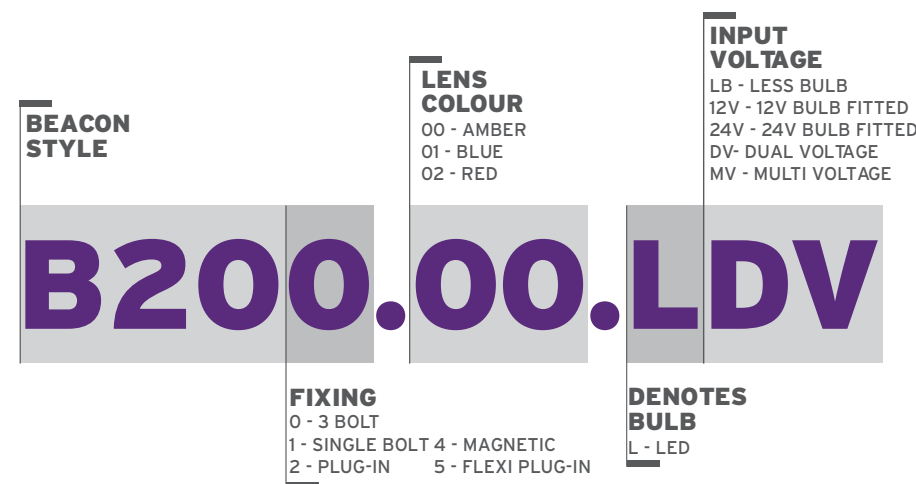
Disconnect from battery before wiring up.

Allow 5 minutes after disconnecting supply from a Xenon beacon/lightbar before touching any wiring or internal part, high voltages are generated and stored within these units. Do not touch bulb or tube glass with bare fingers. Do not over-tighten lens fixing screws.

Technical Information

Part Numbering

To assist with product selection, the diagram generally represents our part numbering system. Customers are requested to ensure the suitability of any product selected for their application.



Approval Details



Approved to ECE Regulation 65



Complies with SAE J845 USA Standard



Conforms with current applicable Electromagnetic Compatibility European Standards



Conforms to Civil Aviation Authority Specification CAP168.



Complies with Low Voltage Directive 73/23/EEC



Denotes LED Light

Technical Information

Magnetic Beacons

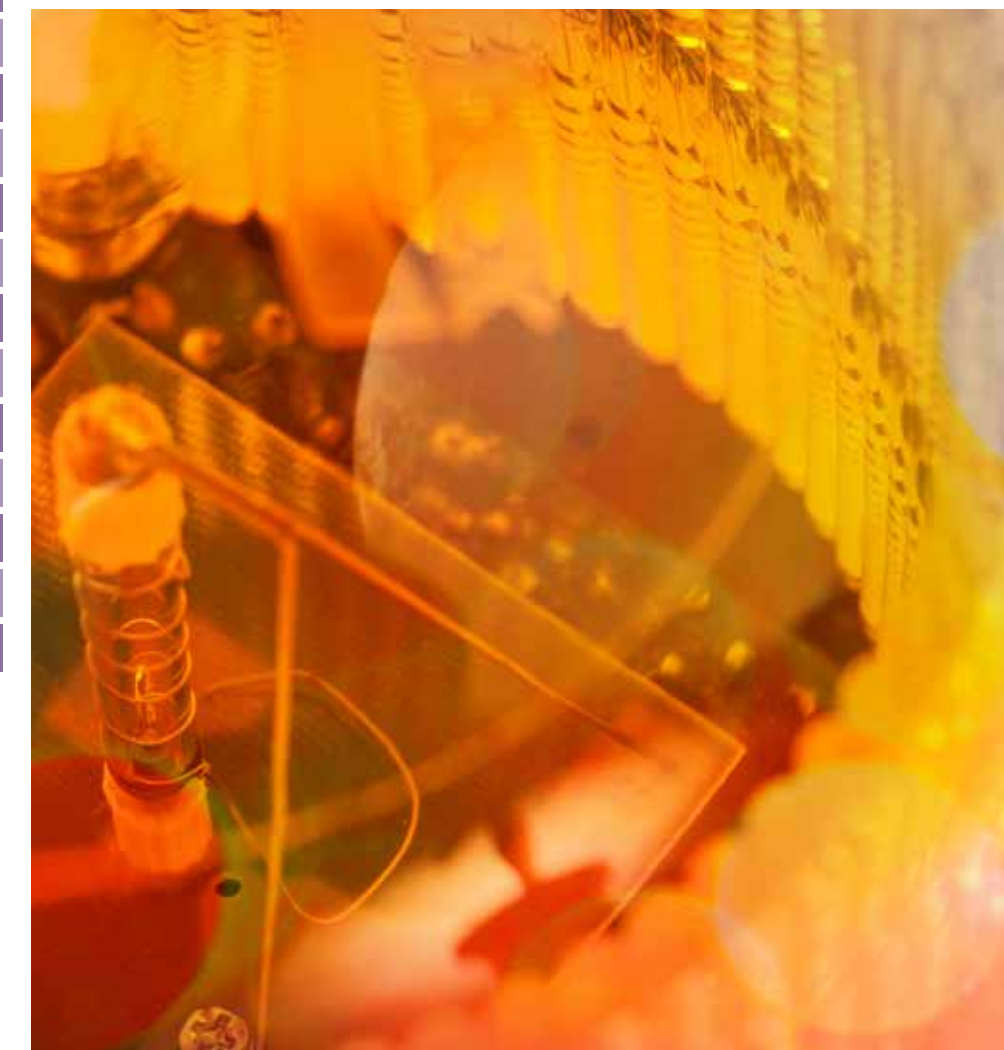
These magnetic beacons are intended for temporary use only. The product carries a recommended speed warning which should be observed. This has been established using a 3:1 safety factor from wind tunnel testing.

B.24.00	50mph/80kph
B.24.70	70mph/112kph
324.00	50mph/80kph
B334.00	50mph/80kph
374.00	40mph/64kph
394.00	50mph/80kph
394.70	70mph/112kph
274.00	40mph/64kph
B14.00.MV	50mph/80kph
284.00	50mph/80kph
B74.00	40mph/64kph
B94.70	50mph/80kph
B84.00	50mph/80kph
294.00	50mph/80kph
B64.00	50mph/80kph
B54.70	70mph/112kph
B204.00	40mph/64kph
B294.00	50mph/80kph
B314.70	70mph/112kph
B324.70	70mph/112kph

Lens Colours

Britax offer alternative lens colours. These are available as a spare part and must be ordered with the relevant amber beacon. It is the customer's responsibility to ensure vehicle lighting regulations in the country of use permit the colour selected.

Part No	Colour	Beacon Series
10514.05	Green	B20 Series
10514.14	California blue	B20 Series
10425.00	Red	330 Series
10488.05	Green	270 & 370 Series
10438.01	DIN blue	390 Series
10438.12	Red	390 Series
10449.00	Red	270 Series
10488.04	Uncoloured	B200 Series
10503.01	Red	B10 Series
10510.05	Green	A420 Series Mini bar



Three Bolt fixing Beacons

B20 THREE BOLT FIXING ROTATING HALOGEN BEACON

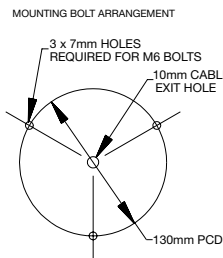
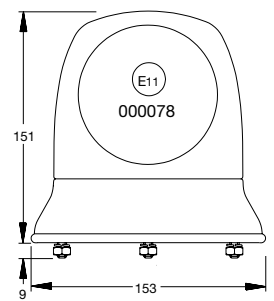
Amber, Polycarbonate Lens. Flash rate : 160 flashes per minute. Operating Temperature -30° to 50°.

B20.00.12V/.24V

Less bulb (.LB) versions available .12LB or .24LB. Specify voltage when ordering.

Spare Parts

10514.00 Amber Lens.
27031 Bulb Retaining Clip.
H448 12V (55W) Halogen Bulb.
H466 24V (70W) Halogen Bulb.



320 THREE BOLT FIXING ROTATING HALOGEN BEACON

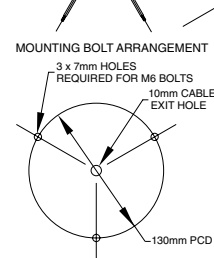
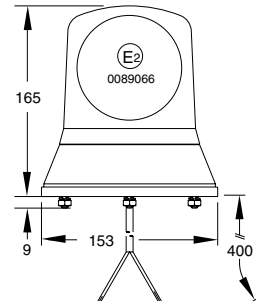
Amber, Polycarbonate Lens. Flash Rate: 160 flashes per minute. Operating Temperature -30° to 50°.

320.00.LB/.12V/.24V

Specify voltage when ordering.

Spare Parts

10398.00 Amber Lens.
15244.00 Drive Belt.
20378.00 Reflector.
27031 Bulb Retaining Clip.
29211.00 PCB Assembly.
13204.00 Motor Module Assembly.
H448 12V (55W) Halogen Bulb.
H466 24V (70W) Halogen bulb.



370 THREE BOLT FIXING ROTATING HALOGEN BEACON

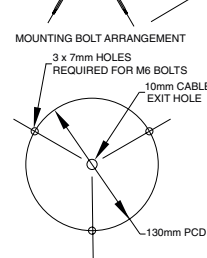
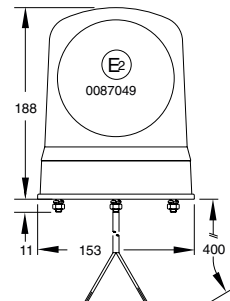
Amber, Flash Rate: 160 flashes per minute. Operating Temperature -30° to 50°

370.00.LB/.12V/.24V

Specify voltage when ordering.

Spare Parts

10240 Amber Lens.
15214 Drive Belt.
27031 Bulb Retaining Clip.
20285.8 Reflector.
13162.00 Motor Module Assembly.
H448 12V (55W) Halogen Bulb.
H466 24V (70W) Halogen Bulb.



Three Bolt fixing Beacons

390 THREE BOLT FIXING ROTATING HALOGEN BEACON

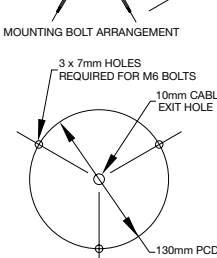
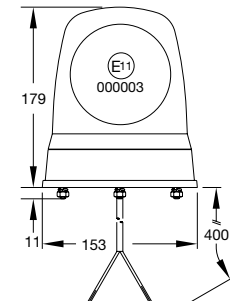
Amber. Flash Rate: 160 flashes per minute. Operating Temperature -30° to 50°.

390.00.LB/.12V/.24V

Specify voltage when ordering.

Spare Parts

10438.00 Amber Lens.
15214 Drive Belt.
13545.00 Motor Module Assembly.
20378.00 Reflector.
27031 Bulb Retaining Clip.
H448 12V (55W) Halogen Bulb.
H466 24V (70W) Halogen Bulb.



B330 THREE BOLT FIXING SINGLE CONTACT BULB BEACON

Amber. Flash Rate: 80 flashes per minute. Operating Temperature -30° - 50°

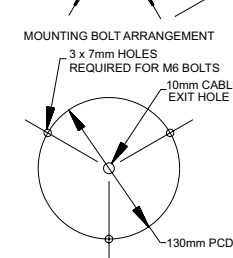
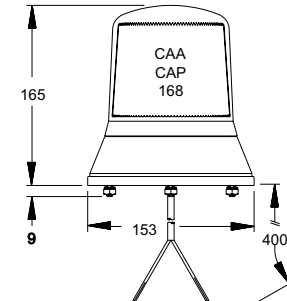
B330.00/12V/24V

Specify voltage when ordering. Fitting a bulb with the incorrect voltage or wattage, will damage the beacon.

Approved for airport use.

Spare Parts

10318.00 Amber Lens.
10085 Internal Fresnel Lens.
L2 12V 36W Bulb.
L621 24V 36W Bulb.



B10 THREE BOLT FIXING XENON-MULTI-VOLTAGE BEACON

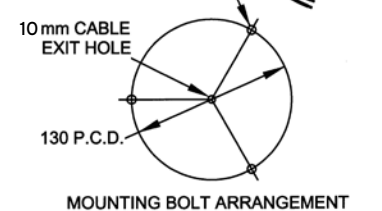
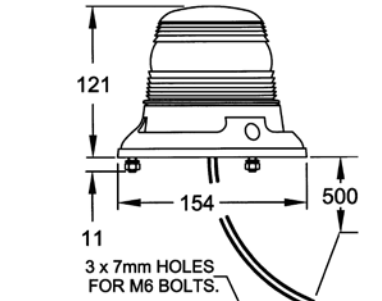
Amber. Polycarbonate Lens. Flash Rate: 75 flashes per minute. Operating Temperature -30° to 50°. Nominal power 2 watts.

B10.00.MV

10V - 100V DC. 20V - 72V AC.

Spare Parts

10503.00 Amber Lens.



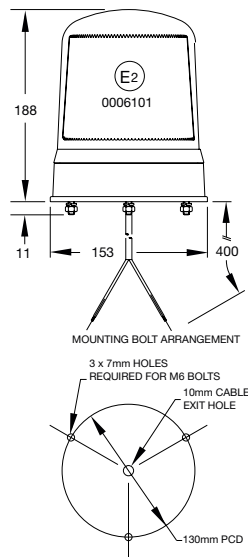
Three Bolt fixing Beacons

270 THREE BOLT FIXING XENON DOUBLE FLASH BEACON

Amber. Polycarbonate Lens. Flash Rate: 125 double flashes per minute. Operating Temperature -30° to 50°.

270.00
10V - 30V DC

Spare Parts
10493.00 Polycarbonate Lens.
18541.00 Internal Fresnel Lens.
13001.00 Xenon Module.

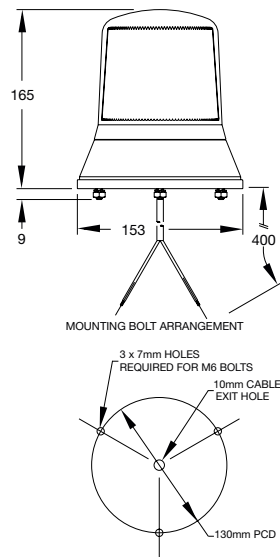


280 THREE BOLT FIXING XENON BEACON

Amber. Polycarbonate Lens. Flash Rate: 70 flashes per minute. Operating Temperature -30° to 50°.

280.00.DV
10V-30V DC

Spare Parts
10423.00 Polycarbonate Lens.
10085 Internal Fresnel Lens.
13002.00 Xenon Module.

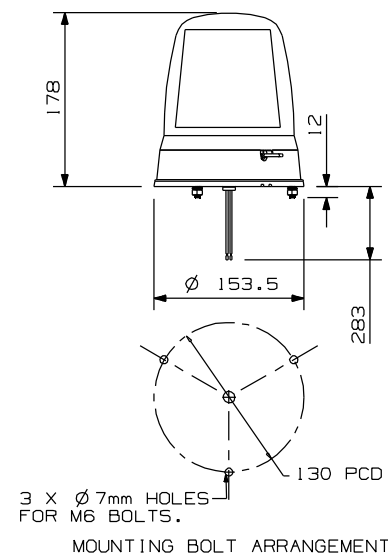


B290 THREE BOLT FIXING XENON BEACON

Acrylic Lens. Flash Pattern: double 125 per minute. Operating temperature -30° to +50°.

B290.00.DV
10V-30V DC

Spare Parts
10438.10 Amber lens



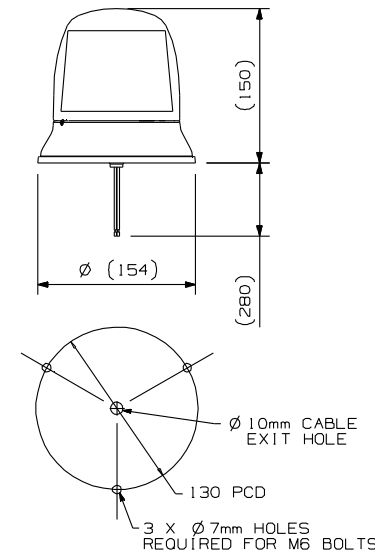
Three Bolt fixing Beacons

B50 THREE BOLT FIXING LED BEACON

Amber. Polycarbonate Lens. Flash Rate: 70 groups of 5 flashes per minute. Operating Temperature -30° to 50°.

B50.00 LMV
10V-49V DC

Spare Parts
10514.04 Amber Lens.
13605.50 Led Module.
10565.00.S Internal Fresnel Lens.

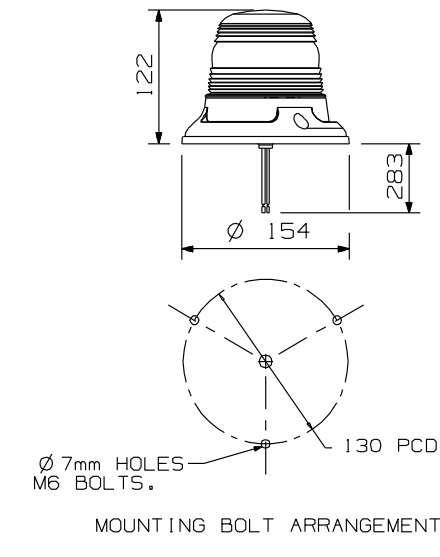


B60 THREE BOLT FIXING LED BEACON

Amber. Polycarbonate Lens. Flash Rate: 70 groups of 5 flashes per minute. Operating Temperature -30° to 50°.

B60.00 LMV
10V-49V DC

Spare Parts
10503.00 Amber Lens.
13604.50 Led Module.

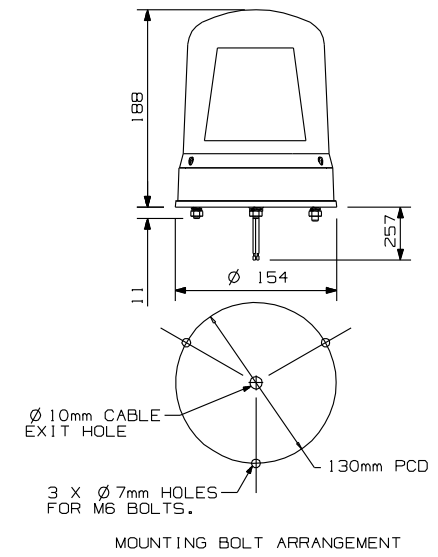


B70 THREE BOLT FIXING LED BEACON

Amber. Flash rate: 70 groups of 5 flashes per minute. Operating temperature -30° to 50°.

B70.00.LMV
10V-49V DC

Spare Parts
10422.00 Amber Lens.
13606.50 Led Module.
10565.00.S Internal Fresnel Lens.



Three Bolt fixing Beacons

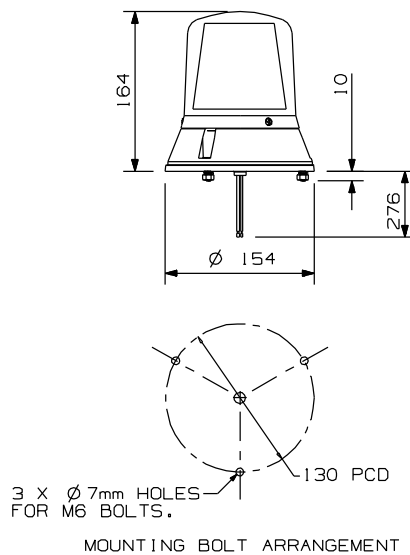
B80 THREE BOLT FIXING LED BEACON

Amber. Polycarbonate Lens. Flash rate 70 groups of 5 flashes per minute. Operating temperature: -30° to 50°.

B80.00.LMV
10V-49V DC

Spare Parts

10423.00 Amber Lens.
13606.50 Led Module.
10565.00.S Internal Fresnel Lens.



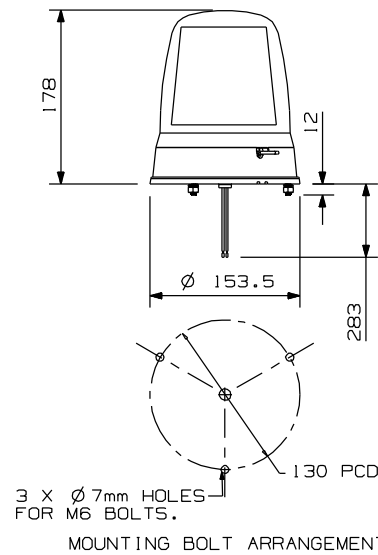
B90 THREE BOLT FIXING LED BEACON

Amber. Flash rate 70 groups of 5 flashes per minute. Operating temperature: -30° to 50°.

B90.00.LMV
10V-49V DC

Spare Parts

10438.10 Amber Lens.
13606.50 Led Module.
10565.00.S Internal Fresnel Lens.



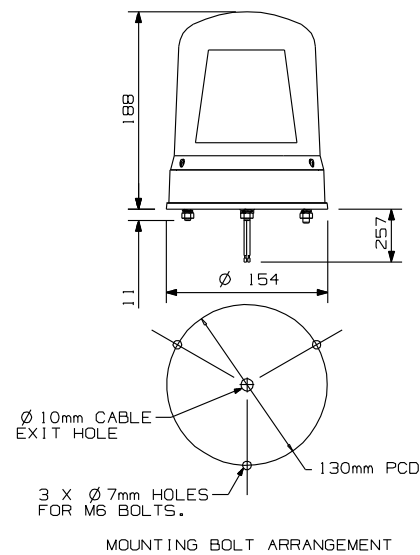
B200 THREE BOLT FIXING LED R65 BEACON

Amber. Flash Pattern: double. Operating temperature -20°C to +50°C

B200.00.LDV Amber Lens
B200.04.LDV Un-coloured Lens
10V-30V DC

Reverse polarity protected.

Uncoloured lens version is not R65 approved.



Three Bolt fixing Beacons

B310 THREE BOLT FIXING LED R65 BEACON

Amber, Polycarbonate lens. Flash rate: 13 flash patterns. Operating temperature -40°C to +70°C

B310.00.LDV Factory set double flash pattern.

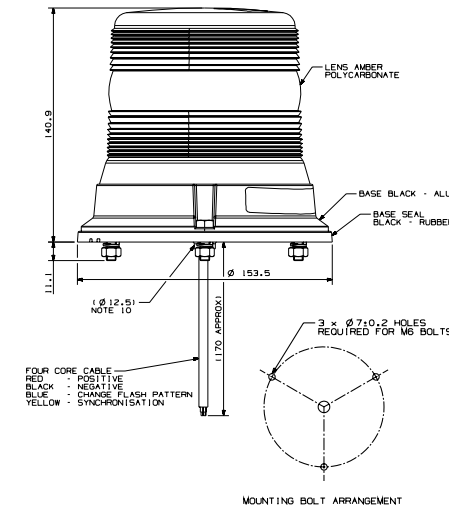
B310.00R.LDV Factory set rotating flash pattern.

10-30V DC

Reverse polarity protected. For R65 compliance select flash pattern no's 12 or 3.

Spare Parts

10449.50 Amber Lens



B320 THREE BOLT FIXING LED R65 BEACON LOW PROFILE

Amber, Polycarbonate lens. Flash rate: 13 flash patterns. Operating temperature -40°C to +70°C

B320.00.LDV Factory set double flash pattern.

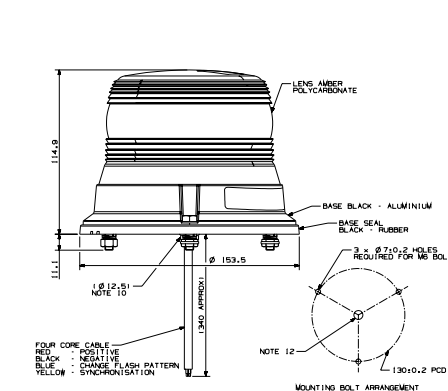
B320.00R.LDV Factory set rotating flash pattern.

10-30V DC

Reverse polarity protected. For R65 compliance select flash pattern no's 12 or 3.

Spare Parts

10449.51 Amber Lens



B21 SINGLE BOLT FIXING ROTATING HALOGEN BEACON

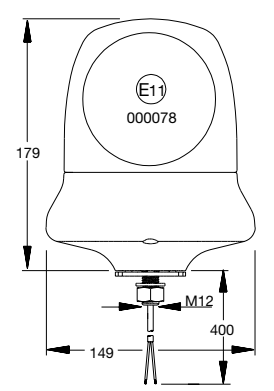
Amber. Polycarbonate Lens. Flash Rate: 160 flashes per minute. Operating Temperature -30° to 50°.

B21.00/.12V/.24V

Less Bulb (.LB) Versions are available .12LB or .24LB. Specify voltage when ordering.

Spare Parts

10514.00 Amber Lens.
27031 Bulb Retaining Clip.
H448 12V (55W) Halogen Bulb.
H466 24V (70W) Halogen Bulb.



For more detailed information or advice on any Britax product please call our **Technical Services Department.**

Single Bolt fixing Beacons

321 SINGLE BOLT FIXING ROTATING HALOGEN BEACON

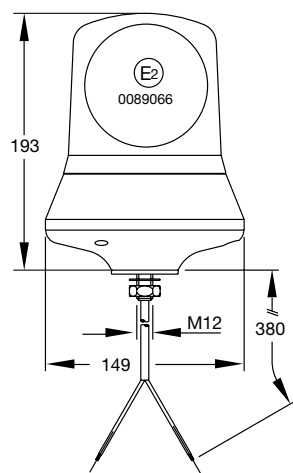
Amber. Polycarbonate Lens. Flash Rate: 160 flashes per minute. Operating Temperature -30° to 50°.

321.00.LB/.12V/.24V

Specify voltage when ordering.

Spare Parts

10398.00 Amber Lens.
15244.00 Drive Belt.
20378.00 Reflector.
27031 Bulb Retaining Clip.
29211.00 PCB Assembly.
13204.00 Motor Module Assembly.
H448 12V (55W) Halogen Bulb.
H466 24V (70W) Halogen Bulb.



371 SINGLE BOLT FIXING ROTATING HALOGEN BEACON

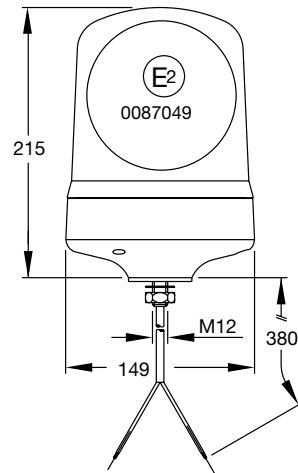
Amber. Flash Rate: 160 flashes per minute. Operating Temperature -30° to 50°.

371.00.LB/.12V/.24V

Specify voltage when ordering.

Spare Parts

10240 Amber Lens.
15214 Drive Belt.
27031 Bulb Retaining Clip.
20285.8 Reflector.
13162.00 Motor Module Assembly.
H448 12V (55W) Halogen Bulb.
H466 24V (70W) Halogen Bulb.



391 SINGLE BOLT FIXING ROTATING HALOGEN BEACON

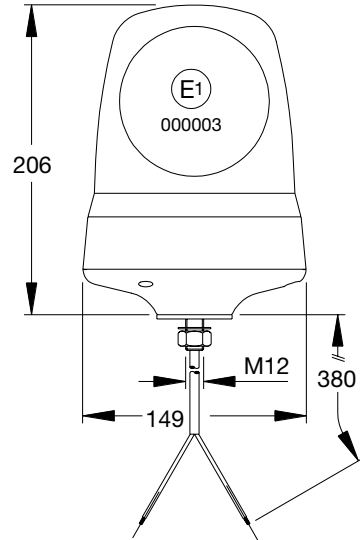
Amber. Flash Rate: 160 flashes per minute. Operating Temperature -30° to 50°.

391.00.LB/.12V/.24V

Specify voltage when ordering.

Spare Parts

10438.00 Amber Lens.
15214 Drive Belt.
13545.00 Motor Module Assembly.
20378.00 Reflector.
27031 Bulb Retaining Clip.
H448 12V (55W) Halogen Bulb.
H466 24V (70W) Halogen Bulb.



Single Bolt fixing Beacons

B331 SINGLE BOLT FIXING/ SINGLE CONTACT BULB

Amber. Flash Rate: 80 flashes per minute. Operating Temperature -30° to 50°.

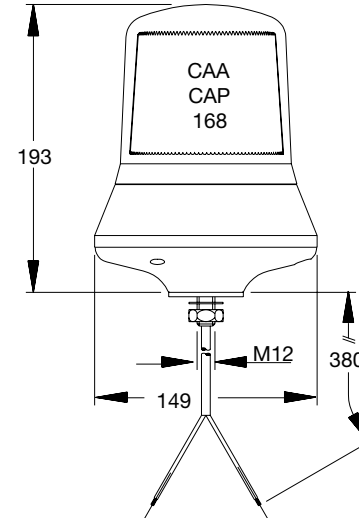
B331.00.12V/.24V

Specify voltage when ordering. Fitting a bulb with the incorrect voltage or wattage will damage the Beacon.

Approved for airport use.

Spare Parts

10318.00 Amber Lens.
10085 Internal Fresnel Lens.
L2 12V 36W Bulb.
L621 24V 36W Bulb.



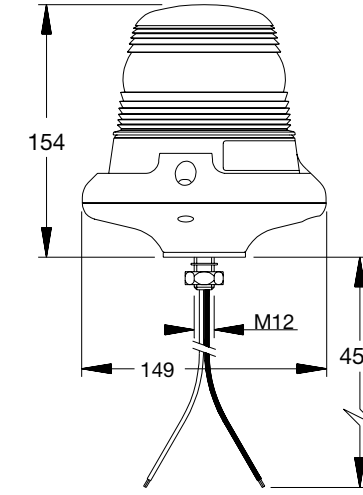
B11 SINGLE BOLT FIXING XENON MULTI-VOLTAGE BEACON

Amber. Polycarbonate Lens. Flash Rate: 75 flashes per minute. Operating Temperature -30° to 50°. Nominal Power 2 watts.

**B11.00.MV
10V-100V DC. 20V-72V AC**

Spare Parts

10503.00 Amber Lens.



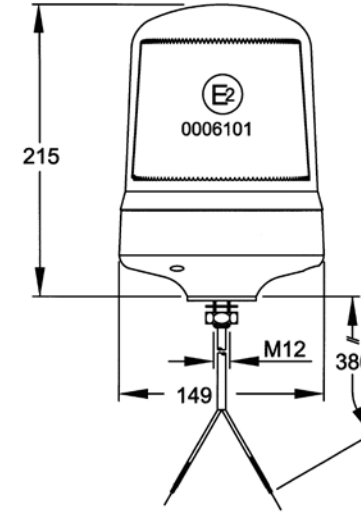
271 SINGLE BOLT FIXING XENON DOUBLE FLASH BEACON

Amber. Polycarbonate Lens. Flash Rate: 125 double flashes per minute. Operating Temperature -30° to 50°.

**271.00
10V-30V DC**

Spare Parts

10493.00 Polycarbonate Lens.
18541.00 Internal Fresnel Lens.
13001.00 Xenon Module.



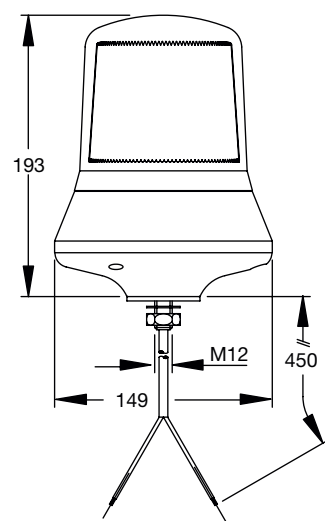
Single Bolt fixing Beacons

281 SINGLE BOLT FIXING XENON BEACON

Amber. Polycarbonate Lens. Flash Rate: 70 Flashes per minute. Operating Temperature -30° to 50°.

281.00.DV
10V-30V DC

Spare Parts
10423.00 Polycarbonate Lens.
10085 Internal Fresnel Lens.
13002.00 Xenon Module.

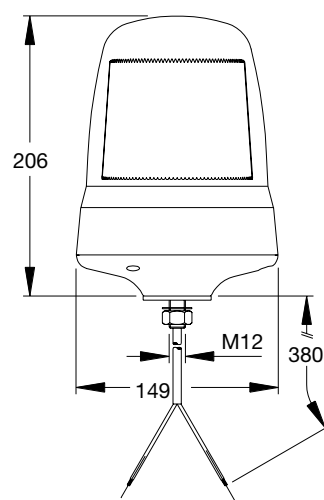


B291 SINGLE BOLT FIXING XENON BEACON

Amber Lens. Flash Pattern: double 125 per minute. Operating temperature -30°C to +50°C

B291.00.DV
Operating voltage 10-30V DC

Spare Parts
10438.10 Amber lens.

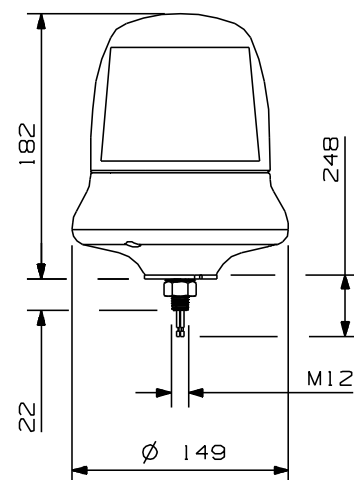


B51 SINGLE BOLT FIXING LED BEACON

Amber. Polycarbonate Lens. Flash Rate: 70 groups of 5 flashes per minute. Operating Temperature -30° to 50°.

B51.00.LMV
10V-49V DC

Spare Parts
10514.04 Amber Lens.
13605.50 Led Module.
10565.00.S Internal Fresnel Lens.



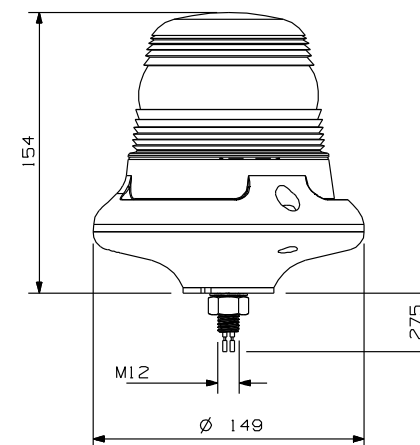
Single Bolt fixing Beacons

B61 SINGLE BOLT FIXING LED BEACON

Amber. Polycarbonate Lens. Flash Rate: 70 groups of 5 flashes per minute. Operating Temperature -30° to 50°.

B61.00.LMV
10V-49V DC

Spare Parts
10503.00 Amber Lens.
13604.50 Led Module.

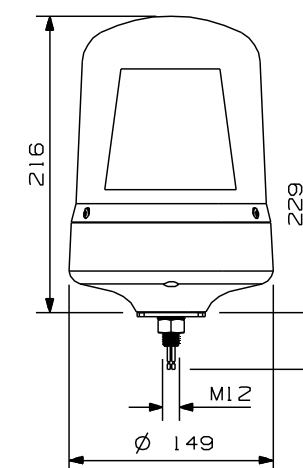


B71 SINGLE BOLT FIXING LED BEACON

Amber. Flash rate: 70 groups of 5 flashes per minute. Operating temperature -30° to 50°.

B71.00.LMV
10V-49V DC

Spare Parts
10422.00 Polycarbonate Lens.
10565.00.S Internal Fresnel Lens.
13606.50 Led Module.

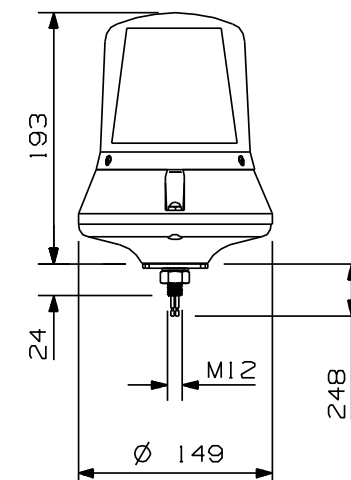


B81 SINGLE BOLT FIXING LED BEACON

Amber. Polycarbonate Lens. Flash rate 70 groups of 5 flashes per minute. Operating temperature: -30° to 50°.

B81.00.LMV
10V-49V DC

Spare Parts
10423.00 Amber Lens.
13606.50 Led Module.
10565.00.S Internal Fresnel Lens.



Single Bolt fixing Beacons

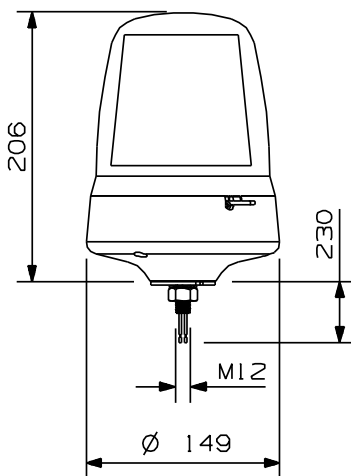
B91 SINGLE BOLT FIXING LED BEACON

Amber. Flash rate 70 groups of 5 flashes per minute. Operating temperature: -30° to 50°.

B91.00.LMV
10V-49V DC

Spare Parts

10438.10 Amber Lens.
13606.50 Led Module.
10565.00.S Internal Fresnel Lens.



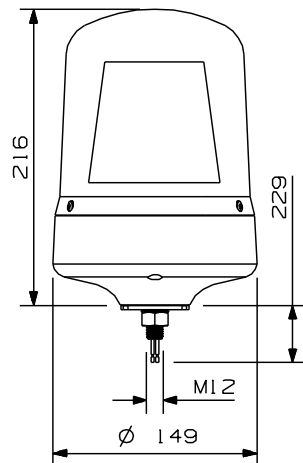
B201 SINGLE BOLT FIXING LED R65 BEACON

Amber. Flash pattern: double. Operating temperature -20°C to +50°C

B201.00.LDV Amber Lens
B201.04.LDV Uncoloured Lens
10V-30V DC

Reverse polarity protected.

Uncoloured lens version is not R65 approved.



B311 SINGLE BOLT FIXING LED R65 BEACON

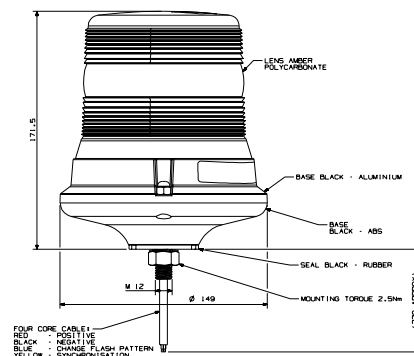
Amber, Polycarbonate lens. Flash rate: 13 flash patterns. Operating temperature -40°C to +70°C

B311.00.LDV factory set double flash pattern.
10V-30V DC

Reverse polarity protected. For R65 compliance select flash pattern no's 13 or 3

Spare Parts

10449.50 Amber Lens



Plug In Beacons

B321 SINGLE BOLT FIXING LED R65 BEACON LOW PROFILE

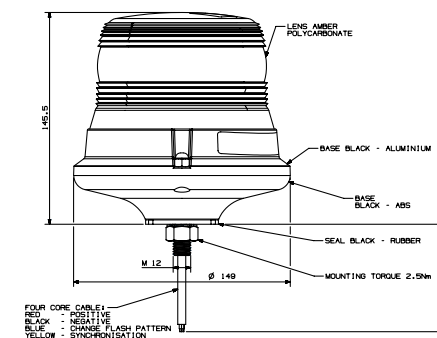
Amber, Polycarbonate lens. Flash rate: 13 flash patterns. Operating temperature -40°C to +70°C

B321.00.LDV factory set double flash pattern.
10-30V DC

Reverse polarity protected. For R65 compliance select flash pattern no's 12 or 3.

Spare Parts

10449.51 Amber Lens



B22 PLUG IN ROTATING HALOGEN BEACON

Amber. Polycarbonate Lens. Flash Rate: 160 flashes per minute. Operating Temperature -30° to 50°.

B22.00/.12V/.24V

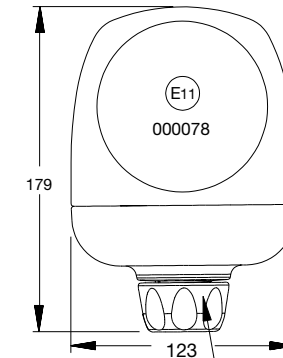
Less bulb (.LB) versions available .12LB or .24LB

Specify voltage when ordering.

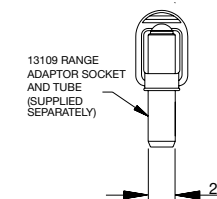
Use with 13109 series fixing socket (not supplied with beacon) see page 35.

Spare Parts

10514.00 Amber Lens.
27031 Bulb Retaining Clip.
H448 12V (55W) Halogen Bulb.
H466 24V (70W) Halogen Bulb.



SINGLE POLE PLUG TO SPEC.
DIN72591 (ISO 4165)



322 PLUG IN ROTATING HALOGEN BEACON

Amber. Polycarbonate Lens. Flash Rate: 160 flashes per minute. Operating Temperature -30° to 50°.

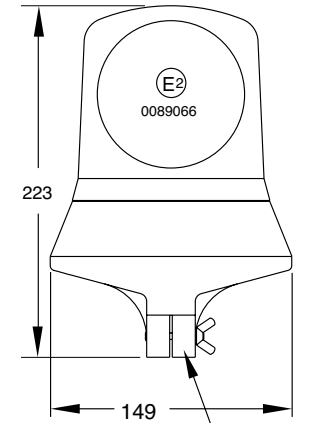
322.00.LB/.12V/.24V

Specify voltage when ordering.

Use with 13109 series fixing socket (not supplied with beacon) see page 35.

Spare Parts

10398.00 Amber lens.
15244.00 Drive belt.
20378.00 Reflector.
27031 Bulb Retaining Clip.
29211.00 PCB Assembly.
13204.00 Motor Module Assembly.
H448 12V (55W) Halogen Bulb.
H466 24V (70W) Halogen bulb.



SINGLE POLE PLUG TO SPEC.
DIN72591 (ISO 4165)

Plug In Beacons

372 PLUG IN ROTATING HALOGEN BEACON

Amber. Flash Rate: 160 flashes per minute. Operating Temperature -30° to 50°.

372.00.LB/.12V/.24V

Specify voltage when ordering.

Use with 13109 series fixing socket (not supplied with beacon) see page 35.

Spare Parts

10240 Amber Lens.
15214 Drive Belt.
27031 Retaining Clip.
20285.8 Reflector.
13162.00 Motor Module.
H448 12V(55W) Halogen Bulb.
H466 24V(70W) Halogen Bulb.

392 PLUG IN ROTATING HALOGEN BEACON

Amber. Flash Rate: 160 flashes per minute. Operating Temperature -30° to 50°.

392.00.LB/.12V/.24V

Specify voltage when ordering.

Use with 13109 series fixing socket (not supplied with beacon) see page 35.

Spare Parts

10438.00 Amber Lens.
15214 Drive Belt.
13545.00 Motor Module Assembly.
20378.00 Reflector.
27031 Bulb Retaining Clip.
H448 12V (55W) Halogen Bulb.
H446 24V (70W) Halogen Bulb.

272 PLUG IN XENON DOUBLE FLASH BEACON

Amber. Polycarbonate Lens. Flash rate 125 double flashes per minute. Operating temperature -30° to 50°.

272.00
10V-30V DC

Use with 13109 series fixing socket (not supplied with beacon) see page 35.

Spare Parts

10493.00 Polycarbonate Lens.
18541.00 Internal Fresnel Lens.
13001.00 Xenon Module.

Plug In Beacons

B292 PLUG-IN XENON BEACON

Amber. Flash Pattern: double 125 per minute. Operating temperature -30°C to +50°C

B292.00.DV
10V-30V DC

Use with 13109 series fixing socket (not supplied with beacon) see page 35.

Spare Parts

10438.10 Amber lens.

282 PLUG-IN XENON BEACON

Amber. Polycarbonate Lens. Flash rate 70 flashes per minute. Operating temperature -30° to 50°.

282.00.DV
10V-30V DC

Use with 13109 series fixing socket (not supplied with beacon) see page 35.

Spare Parts

10423.00 Polycarbonate Lens.
10085 Internal Fresnel Lens.
13002.00 Xenon Module.

B52 PLUG-IN LED BEACON

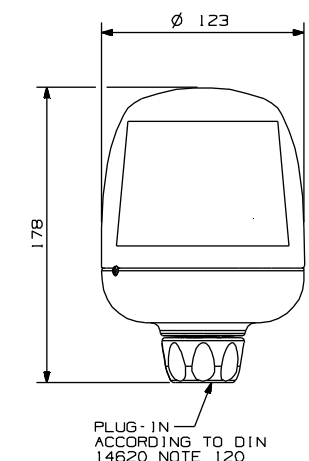
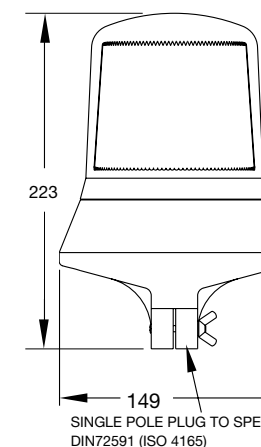
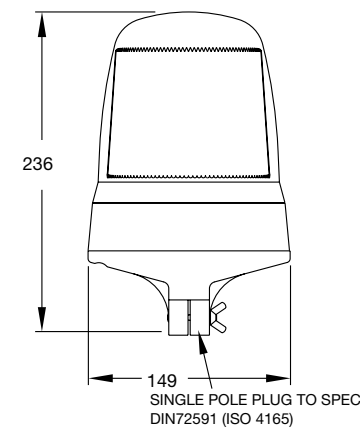
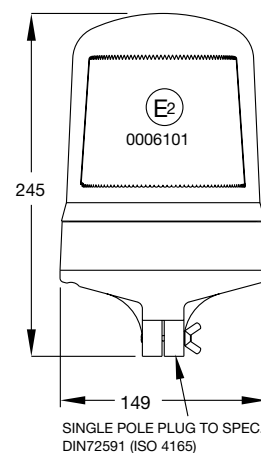
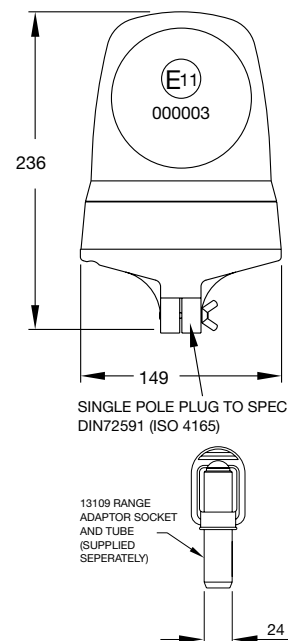
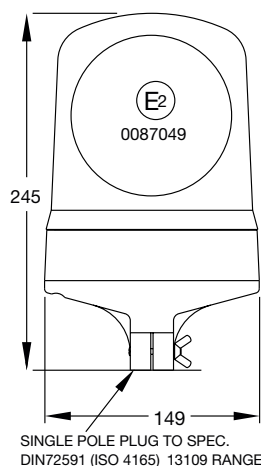
Amber. Polycarbonate Lens. Flash Rate: 70 groups of 5 flashes per minute. Operating Temperature -30° to 50°.

B52.00.LMV
10V-49V DC

Use with 13109 series fixing socket (not supplied with beacon) see page 35.

Spare Parts

10514.04 Amber Lens.
13605.51 Led Module.
10565.00.S Internal Fresnel Lens.



Please Always
Specify Voltage
When Ordering.

Plug In Beacons

B72 PLUG-IN LED BEACON

Amber. Polycarbonate Lens. Flash rate 70 groups of 5 flashes per minute. Operating temperature -30° to 50°.

B72.00.LMV
10V-49V DC

Use with 13109 series fixing socket (not supplied with beacon) see page 35.

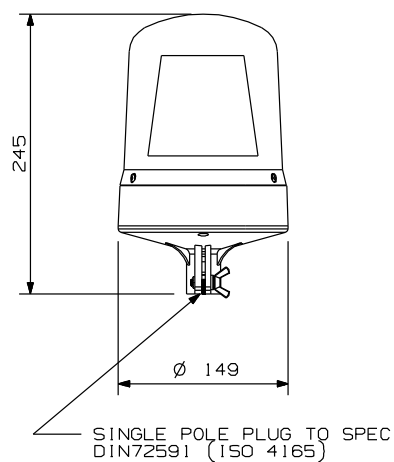
Spare Parts

10422.00 Amber Lens.
13606.50 Led Module.
10565.00.S Internal Fresnel Lens.

LED



EMC



B82 PLUG-IN LED BEACON

Amber. Polycarbonate Lens. Flash rate 70 groups of 5 flashes per minute. Operating temperature: -30° to 50°.

B82.00.LMV
10V-49V DC

Use with 13109 series fixing socket (not supplied with beacon) see page 35.

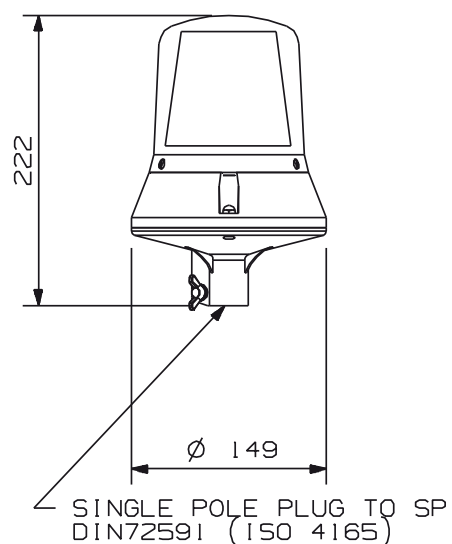
Spare Parts

10423.00 Amber Lens.
13606.50 LED Module.
10565.00.S Internal Fresnel Lens.

LED



EMC



B92 PLUG-IN LED BEACON

Amber. Flash rate 70 groups of 5 flashes per minute. Operating temperature: -30° to 50°.

B92.00.LMV
10V-49V DC

Use with 13109 series fixing socket (not supplied with beacon) see page 35.

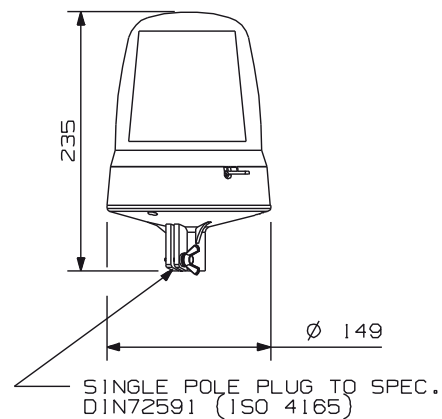
Spare Parts

10438.10 Amber Lens.
13606.50 LED Module.
10565.00.S Internal Fresnel Lens.

LED



EMC



Plug In Beacons

B202 PLUG-IN LED R65 BEACON

Amber. Flash pattern: double. Operating temperature -20°C to +50°C

B202.00.LDV
10V-30V DC

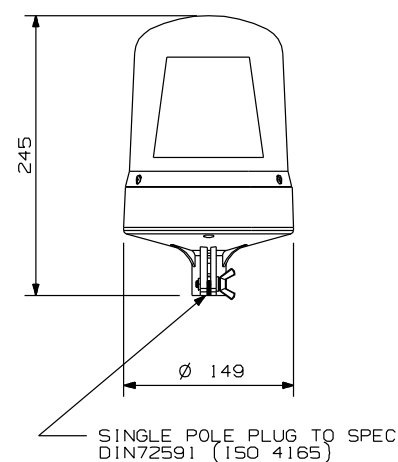
Reverse polarity protected. Use with 13109 series fixing socket (not supplied with beacon) see page 35.

LED



ECE REG 65

EMC



B312 PLUG-IN LED R65 BEACON

Amber, Polycarbonate lens. Flash pattern: double. Operating temperature -40°C to +70°C

B312.00.LDV
10V-30V DC

Reverse polarity protected. Use with 13109 series fixing socket (not supplied with beacon) see page 35.

Spare Parts

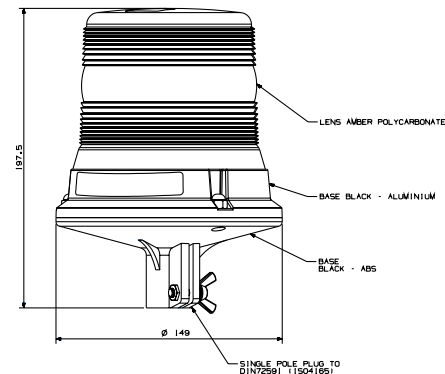
10449.50 Amber Lens

LED



ECE REG 65

EMC



B322 PLUG-IN LED R65 BEACON LOW PROFILE

Amber, Polycarbonate lens. Flash pattern: double. Operating temperature -40°C to +70°C

B322.00.LDV
10-30V DC

Reverse polarity protected. Use with 13109 series fixing socket (not supplied with beacon) see page 35.

Spare Parts

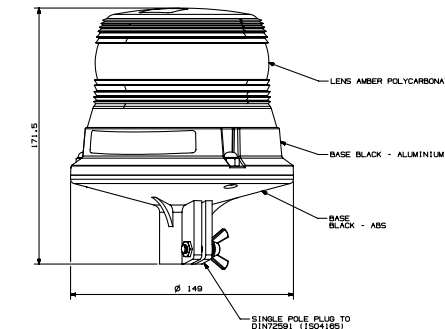
10449.51 Amber Lens

LED



ECE REG 65

EMC



Magnetic Beacons

B24 MAGNETIC (50mph/80kph) ROTATING HALOGEN BEACON

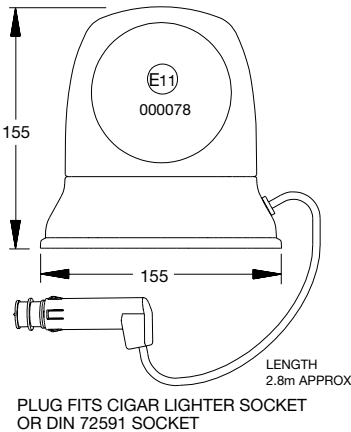
Amber. Polycarbonate Lens. Flash Rate: 160 flashes per minute. Operating Temperature -30° to 50°.

B24.00.12V/.24V AMBER
B24.05.12V GREEN

Less bulb (.LB) versions available .12LB or .24LB. Specify voltage when ordering.

For operating and fitting details see page 5.

Spare Parts
10514.00 Amber Lens.
10514.05 green Lens.
27031 Bulb Retaining Clip.
14218.00 Single Pole Plug.
H448 12V (55W) Halogen Bulb.
H466 24V(70W) Halogen Bulb



B24 MAGNETIC (70mph/112kph) ROTATING HALOGEN BEACON

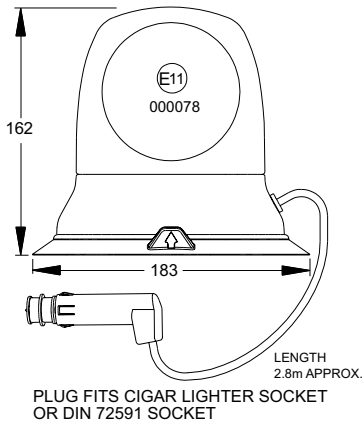
Amber. Polycarbonate Lens. Flash Rate: 160 flashes per minute. Operating Temperature -30° to 50°.

B24.70.12V/.24V

Less bulb (.LB) versions available .12LB or .24LB. Specify voltage when ordering.

For operating and fitting details see page 5.

Spare Parts
10514.00 Amber Lens.
27031 Bulb Retaining Clip.
14218.00 Single Pole Plug.
H448 12V (55W) Halogen Bulb.
H466 24V(70W) Halogen Bulb



324 MAGNETIC (50mph/80kph) ROTATING HALOGEN BEACON

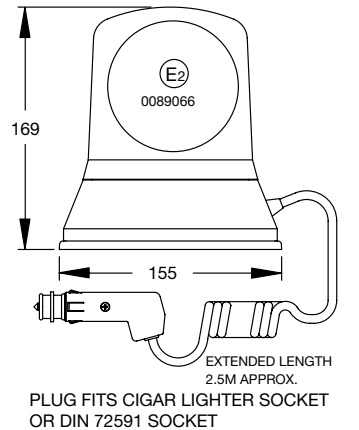
Amber. Polycarbonate Lens. Flash Rate: 160 flashes per minute. Operating Temperature -30° to 50°.

324.00.LB/.12V/.24V

For operating and fitting details see page 5.

Specify voltage when ordering.

Spare Parts
10398.00 Amber Lens.
15244.00 Drive Belt.
20378.00 Reflector.
27031 Bulb Retaining Clip.
29211.00 PCB Assembly.
13204.00 Motor Module Assembly.
H448 12V (55W) Halogen Bulb.
H466 24V (70W) Halogen Bulb.
14218.00 Single Pole Plug.



Magnetic Beacons

374 MAGNETIC (40mph/64kph) ROTATING HALOGEN BEACON

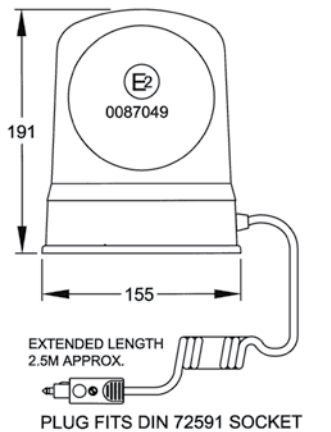
Amber. Flash Rate: 160 flashes per minute. Operating Temperature -30° to 50°.

374.00.LB/.12V/.24V

For operating and fitting details see page 5.

Specify voltage when ordering.

Spare Parts
10240 Amber Lens.
15214 Drive Belt.
27031 Bulb Retaining Clip.
20285.8 Reflector.
13162.00 Motor Module Assembly.
H448 12V (55W) Halogen Bulb.
H466 24V (70W) Halogen Bulb.
14200.00 Single Pole Plug.



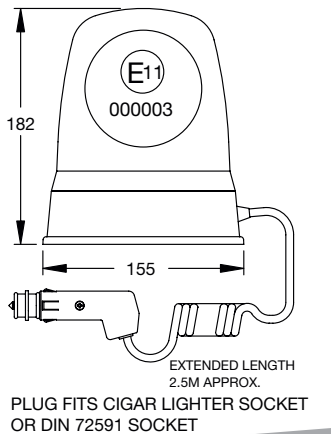
394 MAGNETIC (50mph/80kph) ROTATING HALOGEN BEACON

Amber. Flash Rate: 160 flashes per minute. Operating Temperature -30° to 50°.

394.00.LB/.12V/.24V

For operating and fitting details see page 5. Specify voltage when ordering.

Spare Parts
10438.00 Amber Lens.
15214 Drive Belt.
13545.00 Motor Module Assembly.
20378.00 Reflector.
27031 Bulb Retaining Clip.
14218.00 Single Pole Plug.
H448 12V (55W) Halogen Bulb.
H446 24V (70W) Halogen Bulb.



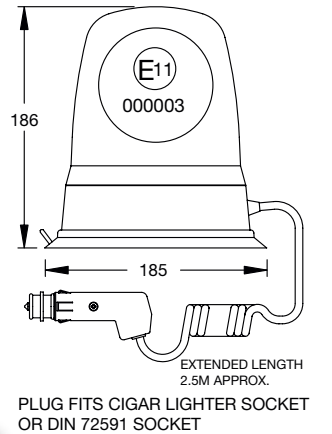
394 MAGNETIC (70mph/112kph) ROTATING HALOGEN BEACON

Amber. Flash Rate: 160 flashes per minute. Operating Temperature -30° to 50°.

394.70.LB/.12V/.24V

For operating and fitting details see page 5. Specify voltage when ordering.

Spare Parts
10438.00 Amber Lens.
15214 Drive Belt.
13545.00 Motor Module Assembly.
20378.00 Reflector.
27031 Bulb Retaining Clip.
H448 12V (55W) Halogen Bulb.
H446 24V (70W) Halogen Bulb.
14218.00 Single Pole Plug.



For Magnetic Beacons.
Operating and fitting details.
See page 5.

Magnetic Beacons

B334 MAGNETIC (50mph/80kph) SINGLE CONTACT BULB BEACON

Amber. Flash Rate: 80 flashes per minute. Operating Temperature -30° to 50°.

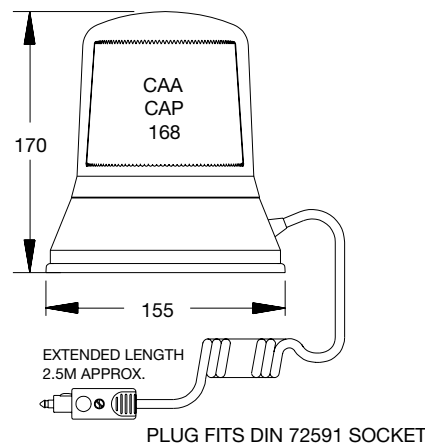
B334.00.12V/24V

For operating and fitting details see page 5.

Specify voltage when ordering. Fitting a bulb with incorrect voltage or wattage will damage the beacon.

Spare Parts

10318.00 Amber Lens.
10085 Internal Fresnel Lens.
L2 12V 36W Bulb.
L621 24V 36W Bulb.
14218.00 Single Pole Plug.



B14 MAGNETIC XENON (50mph/80kph) MULTI-VOLTAGE BEACON

Amber. Polycarbonate Lens. Flash rate 75 flashes per minute. Operating temperature -30° to 50°. Nominal power 2 watts.

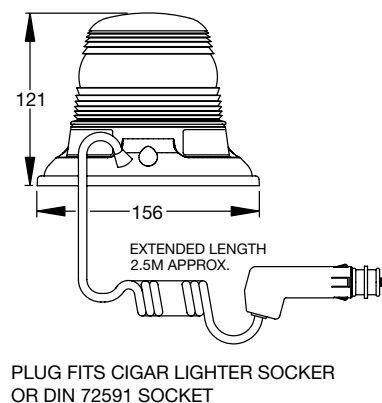
B14.00.MV

10V-100V DC 20V-72V AC

For operating and fitting details see page 5.

Spare Parts

10503.00 Amber Lens.
14218.00 Single Pole Plug.



274 MAGNETIC (40mph/64kph) XENON DOUBLE FLASH BEACON

Amber. Polycarbonate Lens. Flash rate 125 double flashes per minute. Operating temperature -30° to 50°

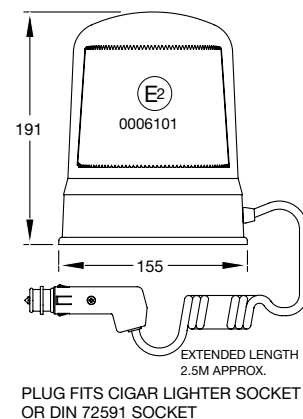
274.00

10V-30V DC

For operating and fitting details see page 5.

Spare Parts

10493.00 Amber Lens.
18541.00 Internal Fresnel Lens.
13001.00 Xenon Module.
14218.00 Single Pole Plug.



Magnetic Beacons

284 MAGNETIC (50mph/80kph) XENON BEACON

Amber. Polycarbonate Lens. Flash rate 70 flashes per minute. Operating temperature -30° to 50°

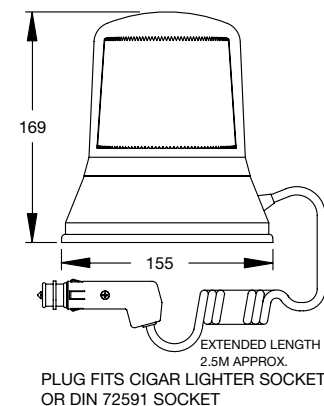
284.00.DV

10V-30V DC

For operating and fitting details see page 5.

Spare Parts

10423.00 Amber Lens.
10085 Internal Fresnel Lens.
13002.00 Xenon module.
14218.00 Single pole plug.



B294 MAGNETIC (50mph / 80kph) XENON BEACON

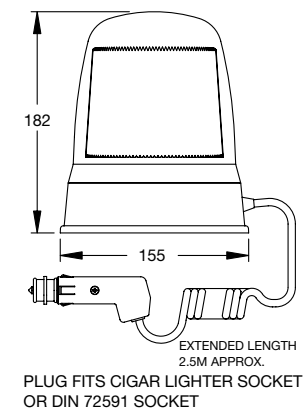
Amber. Flash Pattern: double 125 per minute. Operating temperature -30°C to +50°C

B294.00.DV

For operating and fitting details see page 5.
Operating voltage 10-30V DC

Spare Parts

10438.10 Amber lens



B54 MAGNETIC (70mph/112kph) LED BEACON

Amber. Polycarbonate Lens. Flash rate 70 groups of 5 flashes per minute. Operating temperature -30° to 50°.

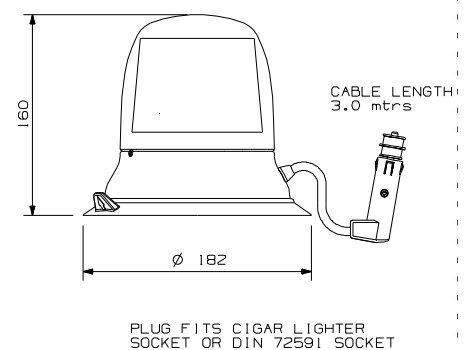
B54.70.LMV

10V-49V DC

For operating and fitting details see page 5.

Spare Parts

10514.04 Amber Lens.
13605.53 Led Module.
14218.00 Single Pole Plug.
10565.00.S Internal Fresnel Lens.



Magnetic Beacons

B64 MAGNETIC (50mph/80kph) LED BEACON

Amber. Polycarbonate Lens. Flash Rate: 70 groups of 5 flashes per minute. Operating Temperature -20° to 50°.

B64.00.LMV
10V-49V DC

Reverse polarity protected. For operating and fitting details see page 5.

Spare Parts

10503.00 Amber Lens.
13604.51 Led Module.
14218.00 Single Pole Plug.



B74 MAGNETIC (40mph/64kph) LED BEACON

Amber. Flash rate: 70 groups of 5 flashes per minute. Operating temperature -30° to 50°.

B74.00.LMV
10V-49V DC

For operating and fitting details see page 5.

Spare Parts

14218.00 Single Pole Plug.
13606.51 Led Module.
10422.00 Amber Lens.
10565.00.S Internal Fresnel Lens.



B84 MAGNETIC (50mph/80kph) LED BEACON

Amber. Polycarbonate Lens. Flash rate 70 groups of 5 flashes per minute. Operating temperature -30° to 50°.

B84.00.LMV
10V-49V DC

For operating and fitting details see page 5.

Spare Parts

10423.00 Amber Lens.
13606.51 Led Module.
14218.00 Single Pole Plug.
10565.00.S Internal Fresnel Lens.



Magnetic Beacons

B94 MAGNETIC (70mph/112kph) LED BEACON

Amber. Flash rate 70 groups of 5 flashes per minute. Operating temperature -30° to 50°.

B94.70.LMV
10V-49V DC

For operating and fitting details see page 5.

Spare Parts

10438.10 Amber Lens.
13606.51 Led Module.
14218.00 Single Pole Plug.
10565.00.S Internal Fresnel Lens.



B204 MAGNETIC (40mph / 64kph) LED R65 BEACON

Amber. Flash pattern: double. Operating temperature -20°C to +50°C

B204.00.LDV
10-30V DC

For operating and fitting details see page 5.
Reverse polarity protected.



B314 MAGNETIC (70mph / 112kph) LED R65 BEACON

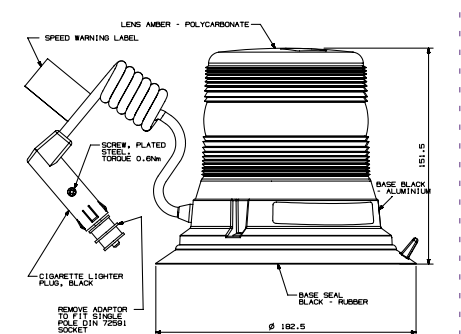
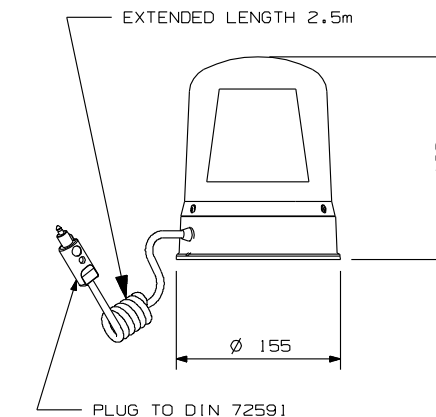
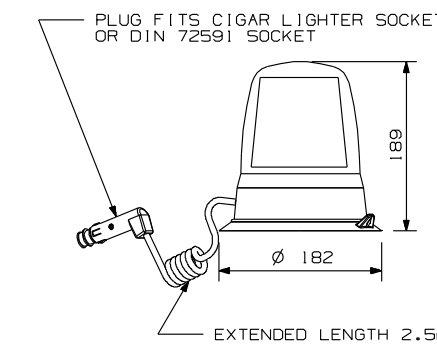
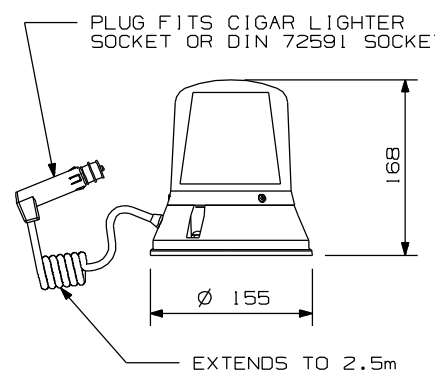
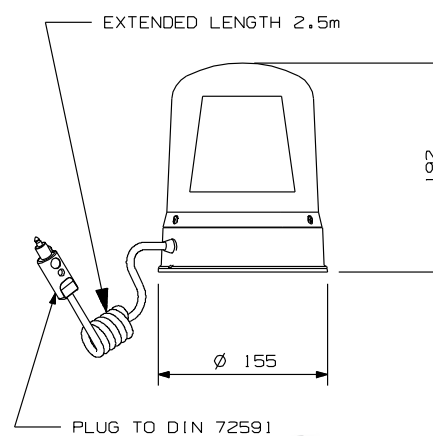
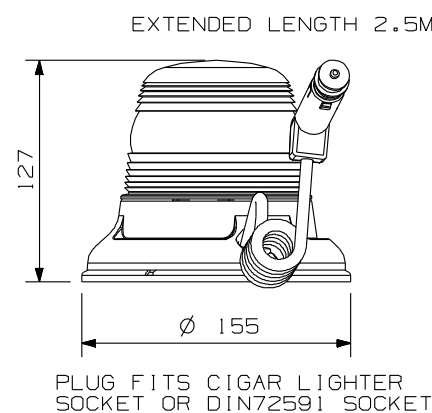
Amber, Polycarbonate lens. Flash pattern: double. Operating temperature -40°C to +70°C

B314.70.LDV
10-30V DC

For operating and fitting details see page 5.
Reverse polarity protected.

Spare Parts

10449.50 Amber Lens



For more detailed information or advice on any Britax product please call our **Technical Services Department.**

Magnetic Beacons

B324 MAGNETIC (70mph / 112kph) LED R65 BEACON

Amber, Polycarbonate lens. Flash pattern: double. Operating temperature -40°C to +70°C

B324.70.LDV
10-30V DC

For operating and fitting details see page 5. Reverse polarity protected.

Spare Parts

10449.51 Amber Lens



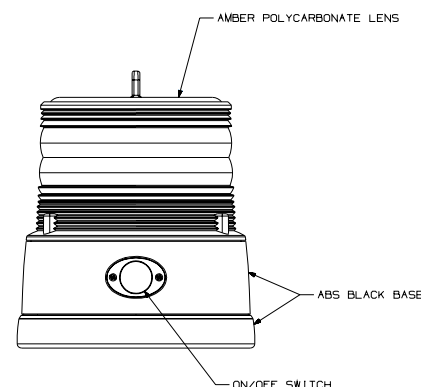
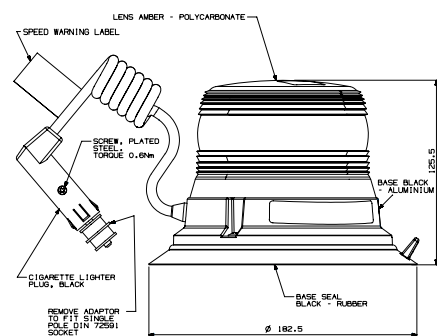
B364 MAGNETIC LED MINI BEACON BATTERY OPERATED

Amber polycarbonate lens Flash patterns = 2 single flash = 75 flashes per minute rotating flash = 125 flashes per minute. Operating temperature -20°C to +50°C

B364.00.BAT

Operating voltage: 2 x 1.5V 'D' Cell batteries (not supplied) Operating time: up to 300 hours. Supplied with PIR photocell, operated by on/off switch in base.

For temporary application on stationary vehicles only.



B25 PLUG-IN FLEXI BASE ROTATING HALOGEN BEACON

Amber, Polycarbonate Lens. Flash rate 160 flashes per minute. Operating temperature -30° to 50°.

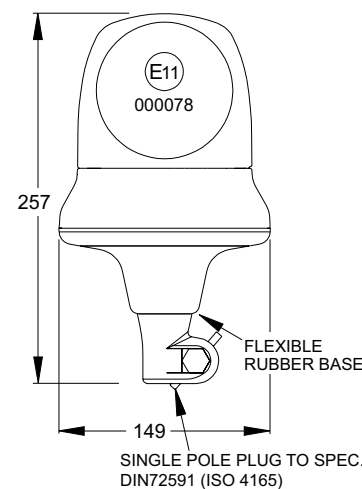
B25.12V/.24V

Use with 13109 series fixing socket (not supplied with beacon) see page 35.

Specify voltage when ordering. Less bulb (.LB) versions available .12LB or .24LB

Spare Parts

10541.00 Amber Lens.
27031 Bulb Retaining Clip.
H448 12V (55W) Halogen Bulb.
H466 24V (70W) Halogen Bulb.



Plug In Flexi Beacons

395 PLUG-IN FLEXI BASE ROTATING HALOGEN BEACON

Amber. Flash Rate: 160 flashes per minute. Operating Temperature -30° to 50°.

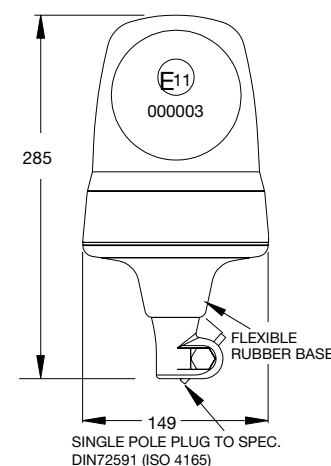
395.100.LB.PC Amber
395.100.12V.PC Amber
395.200.24V.PC Amber
395.210.24V.PC Red

Use with 13109 series fixing socket (not supplied with beacon) see page 35.

Specify voltage when ordering.

Spare Parts

10438.00 Amber Lens.
15214 Drive Belt.
13545.00 Motor Module Assembly.
20378.00 Reflector.
27031 Bulb Retaining Clip.
H448 12V (55W) Halogen Bulb.
H446 24V (70W) Halogen Bulb.



B15 PLUG-IN FLEXI BASE XENON MULTI-VOLTAGE BEACON

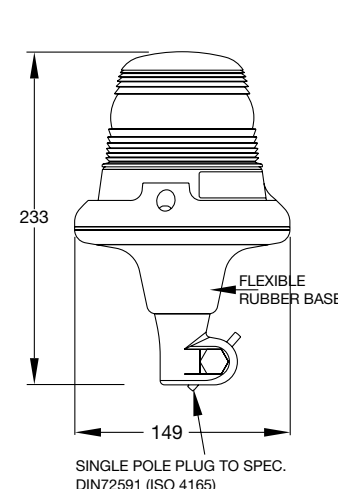
Amber. Polycarbonate Lens. Flash rate 75 flashes per minute. Operating temperature -30° to 50°. Nominal power 2 watts.

B15.00
10V-100V DC 20V-72V AC

Use with 13109 series fixing socket (not supplied with beacon) see page 35.

Spare Parts

10503.00 Amber Lens.



B295 PLUG-IN FLEXI BASE XENON BEACON

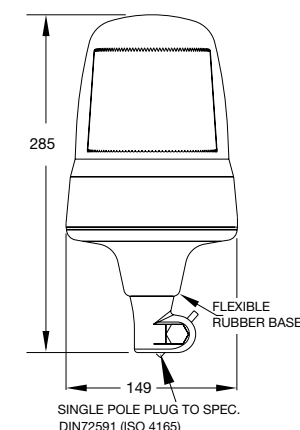
Amber, Polycarbonate lens. Flash pattern: double 125 per minute. Operating temperature -30°C to +50°C

B295.00.DV

Use with 13109 series fixing socket (not supplied with beacon) see page 35. Operating voltage 10-30V DC

Spare Parts

10438.10 Amber lens.



Plug In Flexi Beacons

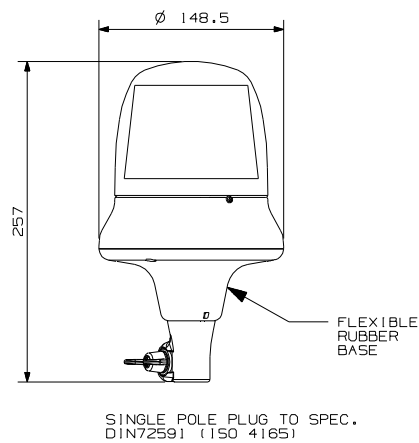
B55 PLUG-IN FLEXI BASE LED BEACON

Amber. Polycarbonate Lens. Flash rate 70 groups of 5 flashes per minute. Operating temperature: -30° to 50°.

B55.00.LMV
10V - 49V DC

Use with 13109 series fixing socket (not supplied with beacon) see page 35.

Spare Parts
10514.04 Amber Lens.
13605.52 Led Module.
10565.00.S Internal Fresnel Lens.



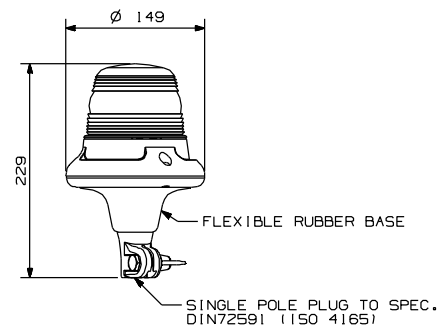
B65 PLUG-IN FLEXI BASE LED BEACON

Amber. Polycarbonate Lens. Flash Rate: 70 groups of 5 flashes per minute. Operating temperature -30° to 50°.

B65.00.LMV
10V-49V DC

Use with 13109 series fixing socket (not supplied with beacon) see page 35.

Spare Parts
10503.00 Amber Lens.
13604.52 LED Module.



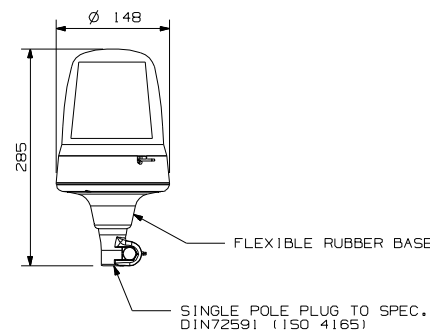
B95 PLUG-IN FLEXI BASE LED BEACON

Amber. Flash rate 70 groups of 5 flashes per minute. Operating temperature -30° to 50°.

B95.00.LMV
10V-49V DC

Use with 13109 series fixing socket (not supplied with beacon) see page 35.

Spare Parts
10438.13 Amber Lens.
13606.52 Led Module.
10565.00.S Internal Fresnel Lens.



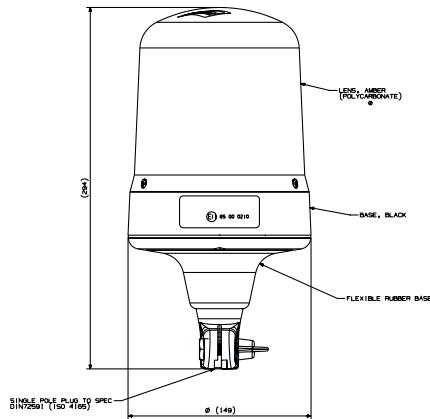
Plug In Flexi Beacons

B205 PLUG-IN FLEXI BASE LED R65 BEACON

Amber, Polycarbonate lens. Flash pattern: double. Operating temperature -20°C to +50°C

B205.00.LDV
10-30V DC

Use with 13109 series fixing socket (not supplied with beacon) see page 35. Reverse polarity protected.



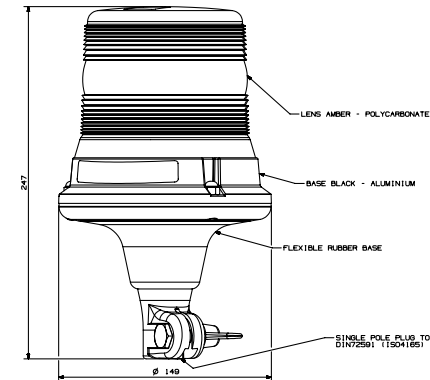
B315 PLUG-IN FLEXI BASE LED R65 BEACON

Amber, Polycarbonate lens. Flash pattern: double. Operating temperature -40°C to +70°C

B315.00.LDV
10-30V DC

Use with 13109 series fixing socket (not supplied with beacon) see page 35. Reverse polarity protected.

Spare Parts
10449.50 Amber Lens



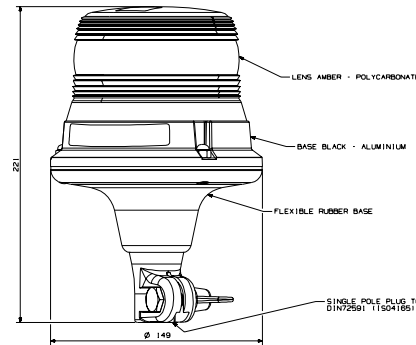
B325 PLUG-IN FLEXI BASE LED R65 BEACON

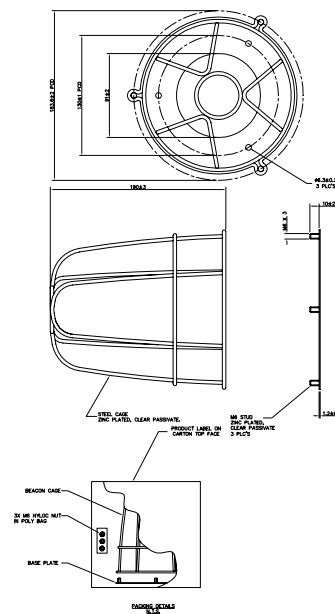
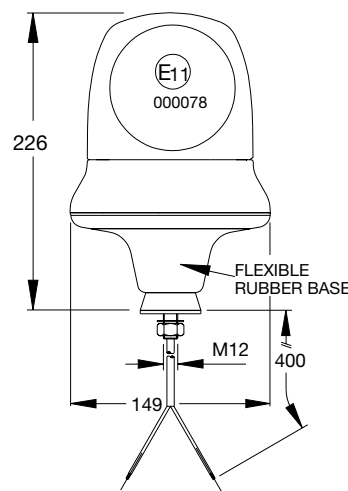
Amber, Polycarbonate lens. Flash pattern: double. Operating temperature -40°C to +70°C

B325.00.LDV
10-30V DC

Use with 13109 series fixing socket (not supplied with beacon) see page 35. Reverse polarity protected.

Spare Parts
10449.51 Amber Lens





LED Warning Modules



An extensive range of top quality modules designed to provide hazard warning solutions to aid safety and awareness in hazardous situations.

Benefits

- Low current consumption
- Sealed against water and dust ingress
- Long life
- Vibration resistance
- ECE approvals
- Dual voltage. 12v or 24v
- Additional mounting frame options available

Technical Info

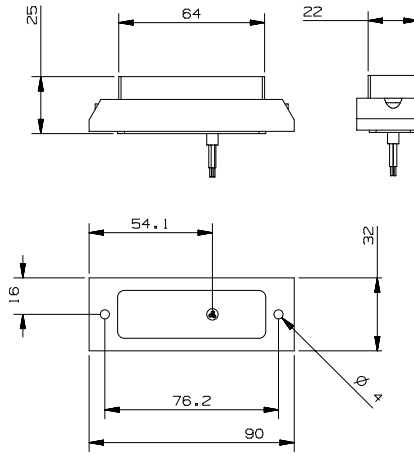
LED Modules: Please ensure connections and the rear face of the module are protected from water when mounting. Capillary action can cause moisture to travel along the cable and into the lamp. For more advice call our Technical Department.

SERIES REF	L52	L52	L54	L55	L56	L57	L59	L66	L72	L73	L76	L77	L94	L95	L96
Lens: un-coloured	•	•	•	•	•	•	•	•	•	•	•	•	•	•	•
Light colour: amber	•	•	•	•	•	•	•	•	•	•	•	•	•	•	•
blue	•	•	•	•	•	•				•					
red	•	•	•	•	•	•				•					
white	•	•	•	•	•	•				•					
green	•	•				•									
Dual voltage 12V or 24V	Dual	Dual	Dual	Dual	Dual	Dual	Dual	Dual	Dual	Dual	Dual	Dual	Dual	Dual	Dual
ECE R65 approved			•	•				•	•				•	•	•
SAE approved			•										•		
EMC compliant	•	•	•	•	•	•	•	•	•	•	•	•	•	•	•
Multiple flash patterns	•	•	•	•	•	•	•			•	•	•	•	•	•
Synchronise light heads	•	•	•	•	•	•	•	•	•	•	•	•	n/a	•	•
Aluminium housing										•	•	•		•	•
Flush mounting			•					•					•		
IP Rating	IP67	IP67	IP67	IP67	IP67	IP67	IP67	IP67	IP67	IP67	IP67	IP67	IP67	IP67	IP67

LED Warning Lamps

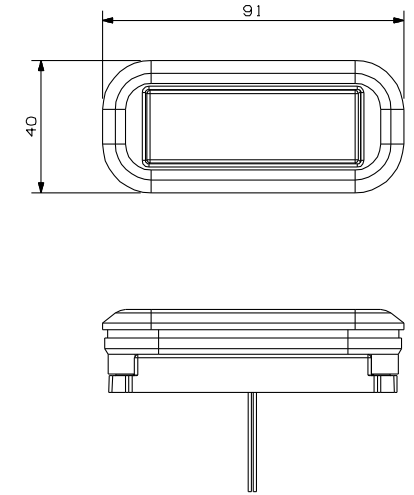
L52 LED WARNING LAMP

Lens uncoloured.
L52.00.DV amber light.
L52.01.DV blue light.
L52.02.DV red light.
L52.03.DV white light.
L52.04.DV green light.
Selectable multi-flash patterns. Lamps can be synchronised. Low current draw.
L52 3 LEDs
DUAL VOLTAGE
Spare Parts
K42.00 Nickel Finish 'L' Bracket.



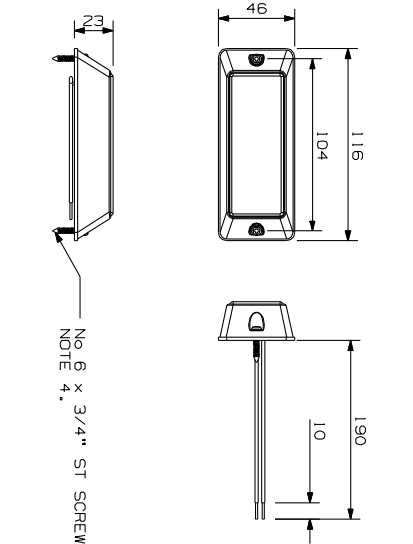
L54 LED WARNING LAMP

Lens uncoloured.
L54.00.DV amber light.
L54.02.DV red light.
L54.03.DV white light.
L54.04.DV green light.
Features as L52 type. Cut-out and mounting instructions supplied.
Ideal for flush mounting in grilles and body panels. Lamp protrudes 6mm from surface when mounted.
L54 3 LEDs FLUSH MOUNTING
DUAL VOLTAGE



L55 LED WARNING LAMP

Lens uncoloured.
L55.10.DV amber light.
L55.01.DV blue light.
L55.02.DV red light.
L55.03.DV white light.
L55.04.DV green light.
Selectable multi-flash patterns. R65 approved. (Amber)
Lamps can be synchronised. Low current draw.
L55 3 LEDs
DUAL VOLTAGE



LED Warning Lamps

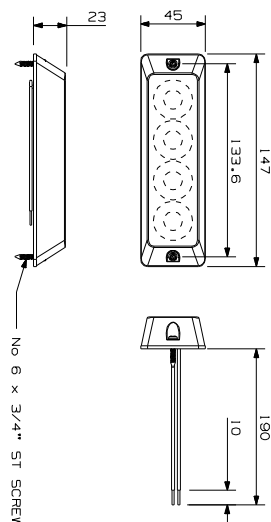
L56 LED WARNING LAMP

Lens uncoloured.

L56.00.DV amber light.
L56.01.DV blue light.
L56.02.DV red light.
L56.03.DV white light.
 Selectable multi-flash patterns.
 Lamps can be synchronised.
 Low current draw.

L56 4 LEDs
DUAL VOLTAGE

LED



L57 LED WARNING LAMP

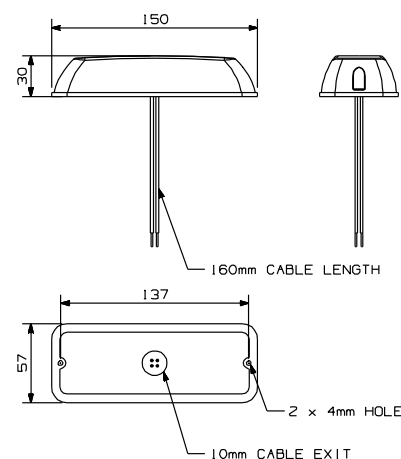
Lens uncoloured.

L57.00.DV amber light.
L57.02.DV red light.
L57.03.DV white light.
L57.04.DV green light.
 Selectable multi-flash patterns including side by side.
 Lamps can be synchronised.
 Low current draw.

L57 32 LEDs
DUAL VOLTAGE

Spare Parts
 K47.00 Black Finish 'L' Bracket

LED



L59 LED AMBER WARNING MICRO BAR

Lens uncoloured

L59.00.DV Amber light
L59.04.DV Green light

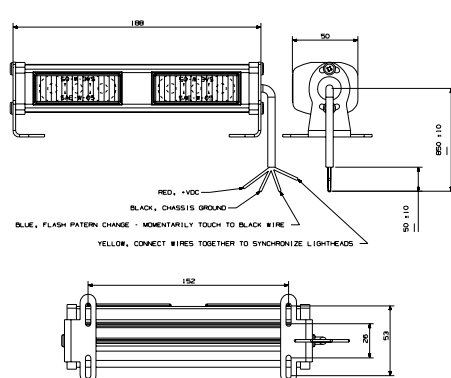
Dual Voltage

For internal or external mounting.
 Attached mounting brackets. Lamps can be synchronised. Selectable flash patterns.
 Low current draw. Dual voltage

Spare parts

No spares available
 Additional magnet mounting kit. K45.00 (2 per bar)

LED



LED Warning Lamps

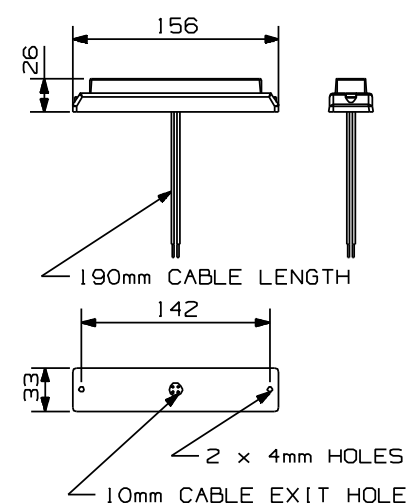
L66 LED WARNING LAMP

Amber. Lens Uncoloured. Double flash only. Lamps can be synchronised. Dual voltage.

L66.00.DV 6 LEDs
DUAL VOLTAGE

Surface mounting only.

LED



L66 LED WARNING LAMP

Lens uncoloured.

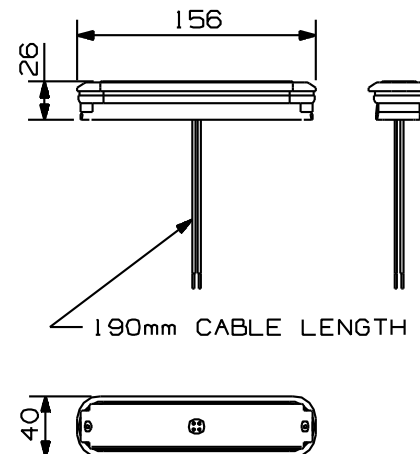
Amber light. Double flash only. Lamps can be synchronised.

L66.01.DV 6 LEDs Amber
L66.10.DV 6 LEDs Blue
DUAL VOLTAGE

Lamp only protrudes 6mm from vehicle bodywork when mounted.

Cut-out and Instructions supplied.

LED



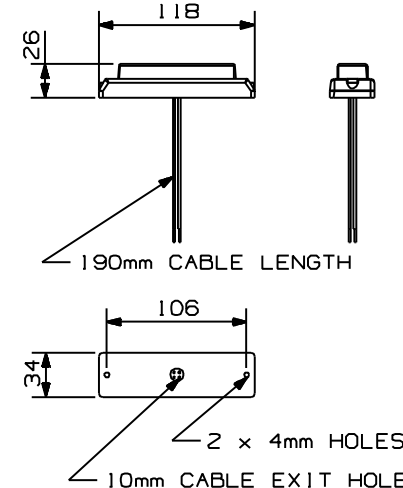
L72 LED WARNING LAMP

Lens uncoloured.

Amber light. Selectable multi-flash pattern. Lamps can be synchronised.

L72.00.LDV 4LEDs
DUAL VOLTAGE

LED



THREE BOLT FIXING

B20.....8
320.....8
370.....8
390.....9
B330.....9
B10.....9
270.....10
280.....10
290.....10

THREE BOLT FIXING LED

B50.....11
B60.....11
B70.....11
B80.....12
B90.....12
B200.....12
B310.....13
B320.....13
B21.....13

SINGLE BOLT FIXING

321.....14
371.....14
391.....14
B331.....15
B11.....15
271.....15

SINGLE BOLT FIXING LED

281.....16
B291.....16
B51.....16
B61.....17
B71.....17
B81.....17
B91.....18
B201.....18
B311.....18

PLUG-IN FIXING

B321.....19
B22.....19
322.....19
372.....20
392.....20
272.....20

PLUG-IN FIXING LED

B292.....21

282.....21
B52.....21
B72.....22
B82.....22
B92.....22

MAGNETIC FIXING

B202.....23
B312.....23
B322.....23
B24.....24
324.....24
374.....25
394.....25
B334.....26
B14.....26
274.....26

MAGNETIC FIXING LED

284.....27
B294.....27
B54.....27
B64.....28
B74.....28
B84.....28
B94.....29
B204.....29
B314.....29

PLUG-IN FLEXI FIXING

B324.....30
B364.....30
B25.....30
395.....31
B15.....31
B295.....31
B55.....32
B65.....32
B95.....32
B205.....33
B315.....33
B325.....33
B27.....34

NEW STYLE BEACONS

B100.....34
B104.....34
B150.....34
B154.....34
B160.....34
B164.....34
B180.....34
B184.....34

ADAPTORS & SOCKETS

13109.....35
K09.....35

LED WARNING LAMPS

L52.....36
L54.....36
L55.....36
L56.....36
L57.....36
L59.....36
L66.....36
L72.....36
L73.....36
L76.....36
L77.....36
L94.....36
L95.....36
L96.....36
L52.....37
L54.....37
L55.....37
L56.....38
L57.....38
L59.....38
L66.....39
L72.....39
L73.....40
L76.....40
L77.....40
L94.....41
L95.....41
L96.....41



www.britax-pmg.com

Britax PMG Ltd is part of the ECCO Safety Group, the world's largest manufacturer of back-up alarms and amber warning lights. ECCO Safety Group and its subsidiaries are worldwide market leaders in emergency lighting and audible warning equipment for commercial and emergency vehicles.

www.eccogroup.com