
 3 Bedrooms

 2½ Bathrooms

 Double Garage

THE WESTFIELD II

2224 SQ.FT.

☐ Elements Specification

☐ Elite Specification

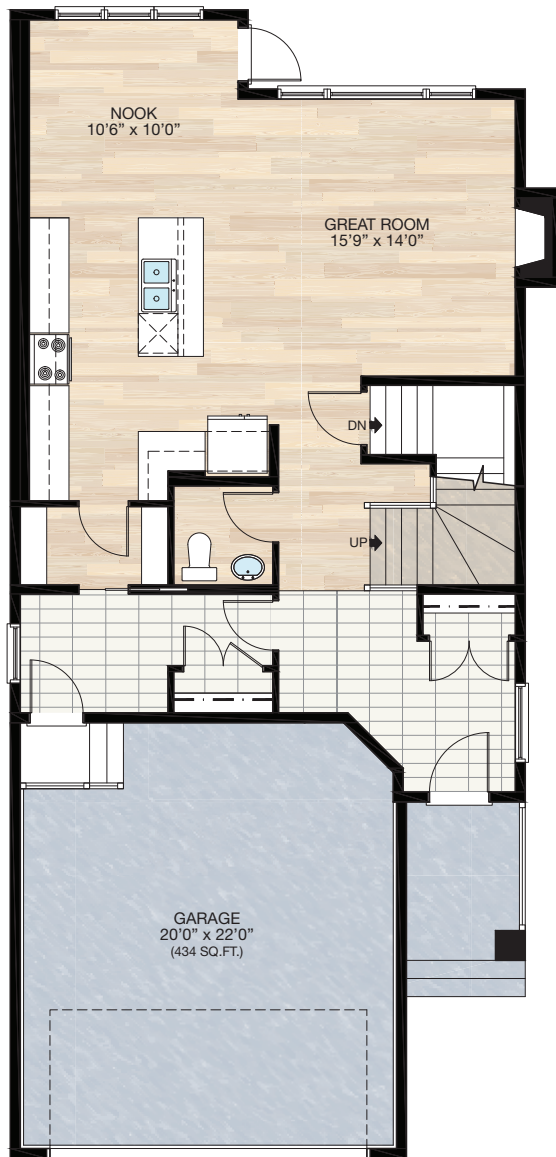
☐ Elite Plus Specification



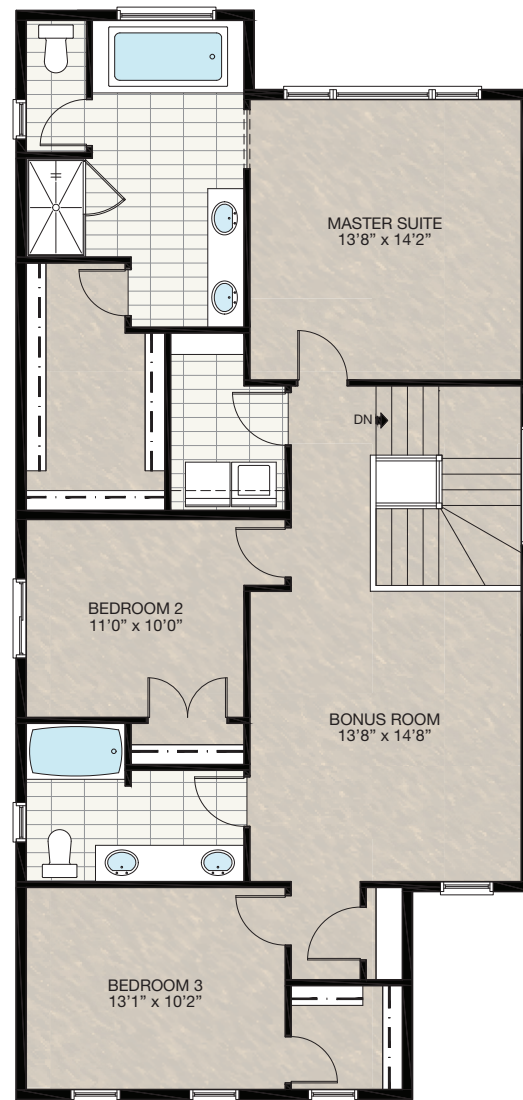
Trico Homes™
The Heart of Homebuilding®

STANDARD PLAN

THE
WESTFIELD II
2224 SQ.FT.



MAIN
919 SQ.FT.



UPPER
1305 SQ.FT.

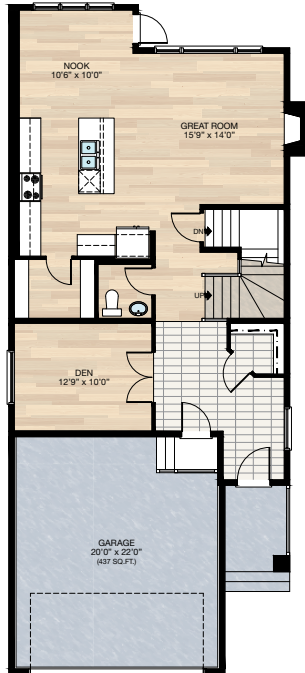
| | | | | | | |
|---------------------|------|--------|----------|------|----------|------|
| SOLID CORE PLANK | DECK | CARPET | CONCRETE | TILE | LAMINATE | LINO |
|---------------------|------|--------|----------|------|----------|------|

FEATURED WESTFIELD II OPTIONS



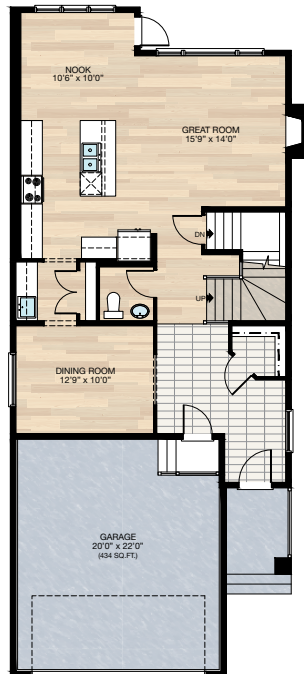
SELECT-1 DEN OPTION

- Additional 104 sq.ft. to main floor
- Extend main floor & garage out 4'0" towards the front of the house
- Extend front entry 4'6"
- Delete mudroom
- Add two 2'4" French door to den
- Delete standard closet to foyer
- Add W.I.C. to foyer
- Relocate garage entry
- Add 60" x 24" P window to den
- Delete mudroom 36" x 24" P window



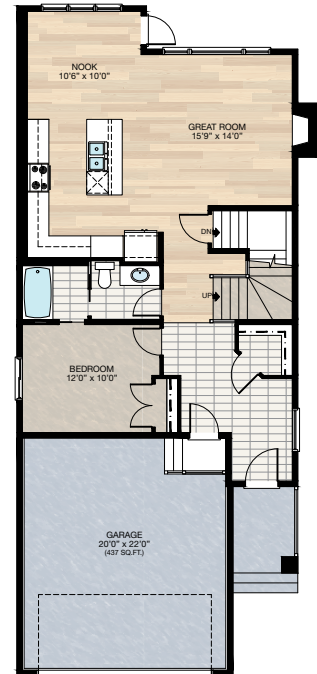
SELECT-2 DINING ROOM WITH BUTLER PANTRY OPTION

- Additional 104 sq.ft. to main floor
- Extend main floor & garage out 4'0" towards the front of the house
- Extend front entry 4'6"
- Delete mudroom
- Delete standard closet to foyer
- Add W.I.C. to foyer
- Relocate garage entry
- Add 60" x 24" P window to dining room
- Delete mudroom 36" x 24" P window
- Delete 8"-16" wire shelving in pantry
- Add 5"-12" wire shelving pantry closet
- Add 5'-5'½" upper & lower cabinets with bar sink



SELECT-3 MAIN FLOOR BEDROOM OPTION

- Additional 104 sq.ft. to main floor
- Extend main floor & garage out 4'0" towards the front of the house
- Extend front entry 4'6"
- Delete mudroom
- Delete standard closet to foyer
- Add W.I.C. to foyer
- Relocate garage entry
- Delete mudroom 36" x 24" P window
- Delete wire shelving in pantry
- Convert 3'0" of upper & lower cabinet in kitchen to pantry cabinet
- Add 48" x 40" HSL window to bedroom
- Convert ½ bath to 3-piece bath



SOLID CORE
PLANK

DECK

CARPET

CONCRETE

TILE

LAMINATE

LINO

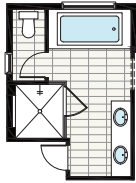
tricohomes.com

FEATURED OPTIONS

← 34' →
Min. Lot Width

SELECT-4 ENSUITE OPTION

- Delete standard 60" x 36" fiberglass shower
- Add 60" x 48" glass & tile shower with tile niches



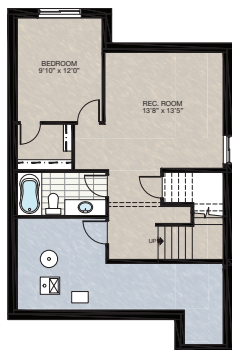
SELECT-5 MAIN BATH OPTION

- Enclosed tub & toilet area with two separate vanities
- Reduced master walk-in closet for Bedroom 2 closet

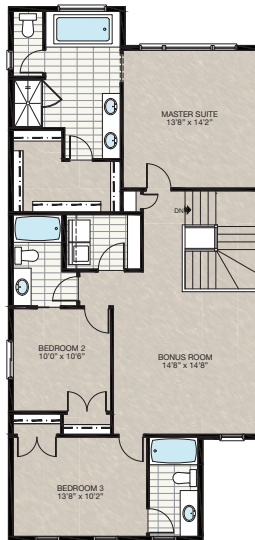


SELECT-8 BASEMENT DEVELOPMENT OPTION

- 529 Sq.Ft. of developed area
- Includes finished basement stairwell
- Delete 2'8" door at top of stairwell
- Add one riser to stairwell for 9'0" basement ceiling (8'9" headroom clearance)
- 60" x 24" Windows changed to 60" x 36"

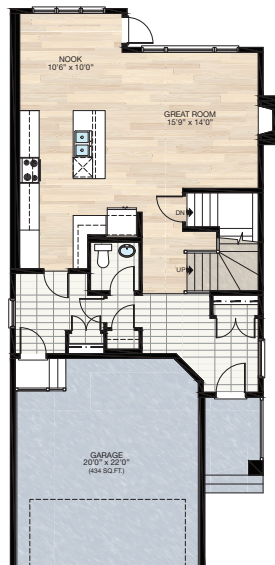


SELECT-6 SECONDARY BEDROOM ENSUITE OPTION

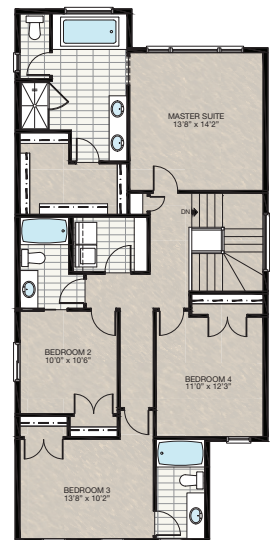


SELECT-9 KITCHEN OPTION 1

- Delete wire shelving pantry
- Add 48" cabinet pantry
- Add bedroom closet
- 1/2 Bath entry relocated
- Add one potlight to kitchen
- Relocate one light location from mudroom to hallway

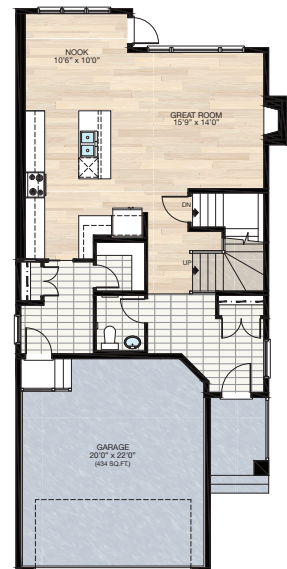


SELECT-7 UPPER FLOOR FOUR BEDROOMS OPTION



SELECT-10 PANTRY & MUDROOM OPTION

- Additional kitchen cabinetry
- Add one potlight to kitchen
- Reconfigure mudroom / pantry & 1/2 bath location



SOLID CORE
PLANK

DECK

CARPET

CONCRETE

TILE

LAMINATE

LINO

tricohomes.com

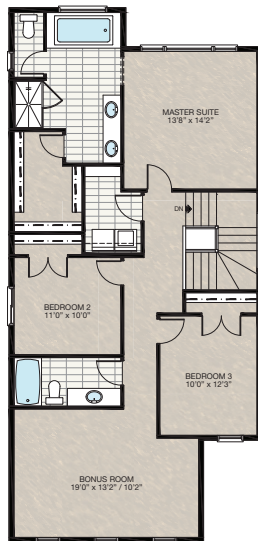
FEATURED OPTIONS

THE
WESTFIELD II
2224 SQ.FT.

SELECT-11

FRONT BONUS ROOM OPTION

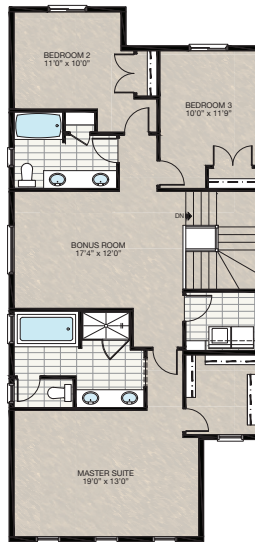
- Master bedroom walk-in closet reduced to accommodate bedroom 2 closet relocation
- Main bath vanity reduced by 24"
- Bedroom 3 standard closet in lieu of walk-in closet
- Delete hallway linen closet



SELECT-12

FRONT MASTER BEDROOM OPTION

- Delete rear window 30" x 60" VSL / 30" x 60" P / 30" x 60" P/P
- Add 48" x 40" HSL to rear for bedroom 3
- Add 60" x 24" P window to bonus room
- Delete 60" x 40" P window at ensuite
- Add 36" x 40" P window to ensuite



Trico Homes is a local home builder, with new single and multi-family homes for sale in Calgary, Okotoks, Chestermere, Cochrane, and Airdrie. Offering a great selection of starter, move-up and semi-estate models in numerous communities, you'll find the house that's just right for you! Look for this model and many others in Beacon Heights in Sherwood, Belmont, Bridgeport, Carrington, Chelsea, Coach Ridge, Cornerbrook, Cranston's Riverstone, Crestmont, D'Arcy, Evanston, Heritage Hills, Hillcrest, Lakeview, Legacy, Legacy Commons Townhomes, Midtown, Nolan Hill, Pine Creek, Redstone, Riviera, Seton, Sirocco, Unity in Seton Townhomes, Verona Townhomes & Viridian Condos in Sage Hill, Wentworth Pointe Townhomes and Wolf Willow.



Renderings are artist's conceptions only and may vary by community and lot selection. Prices, floorplans, specifications and dimensions are approximate and are subject to change without notice. E.O.E. © All rights reserved, including the right if reproduction in the whole or in part without the permission of Trico Homes.

Plan updated as of July 17, 2018



tricohomes.com