


 3 Bedrooms

 2½ Bathrooms

 Double Garage

THE KINGSTON

2321 SQ.FT.

☐ Elements Specification

☐ Elite Specification

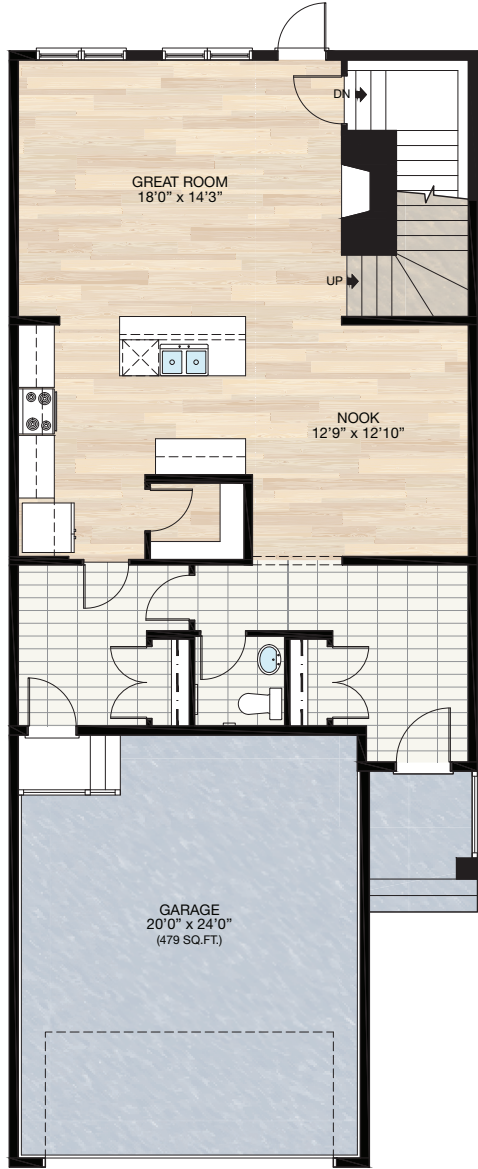
☐ Elite Plus Specification



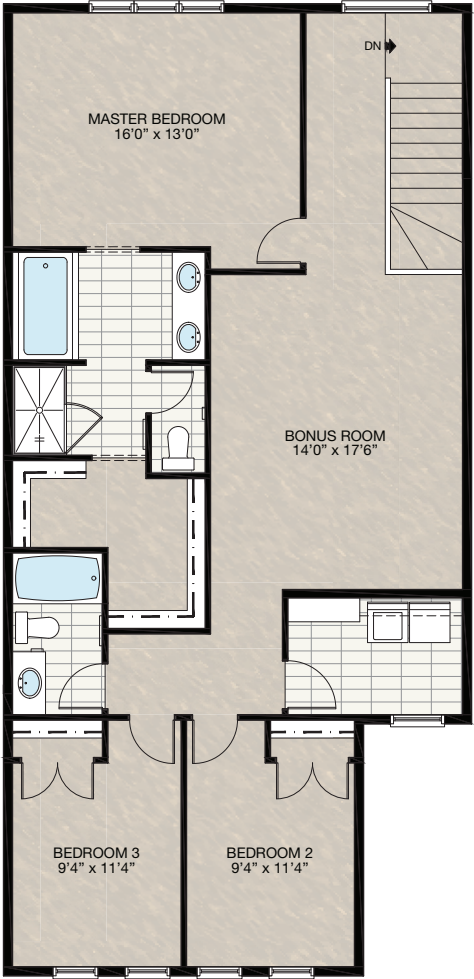
Trico Homes™
The Heart of Homebuilding®

STANDARD PLAN

THE
KINGSTON
2321 SQ.FT.



MAIN
1001 SQ.FT.



UPPER
1320 SQ.FT.

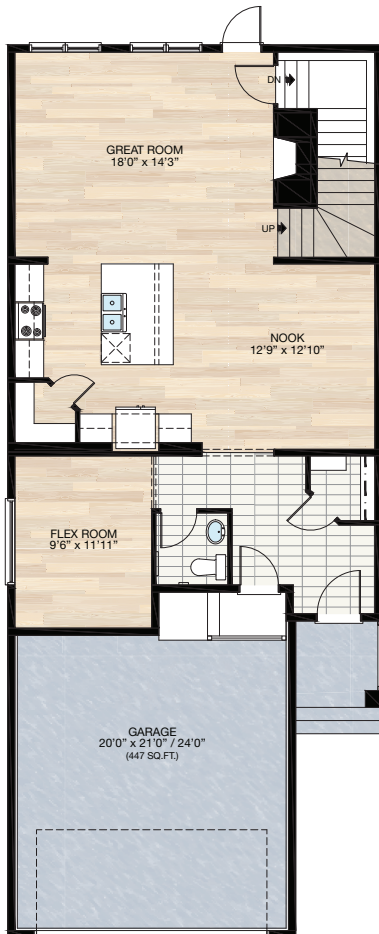
SOLID CORE PLANK	DECK	CARPET	CONCRETE	TILE	LAMINATE	LINO
------------------	------	--------	----------	------	----------	------

FEATURED OPTIONS



SELECT-1 FLEX ROOM OPTION

- Additional 32 sq.ft. to main floor
- Extend main floor space into the garage
- Reduced garage space
- Redesign kitchen
- Delete 84" x 39.5" kitchen island
- Add 84" x 60" kitchen island
- Delete mudroom closet & 48" x 18" P window
- Delete standard front entry closet
- Add W.I.C. to front entry
- Add 72" x 18" P window to flexroom

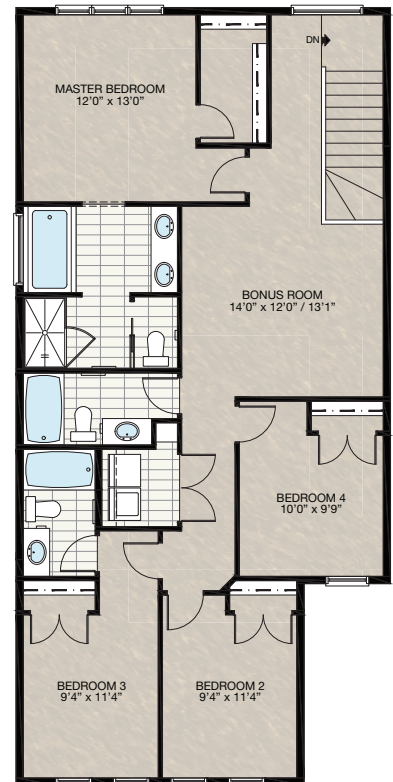


SELECT-2 MAIN FLOOR BEDROOM WITH BATH OPTION

- Additional 48 sq.ft. to main floor
- Extend main floor space into the garage
- Reduced garage space
- Delete 84" x 39.58" kitchen island
- Add 84" x 60" kitchen island
- Delete mudroom 48" x 18" P window
- Delete standard front entry closet
- Add W.I.C. to front entry
- Add 48" x 40" HSL window to bedroom
- Change bedroom flooring from hardwood to carpet
- Add 34" x 60" I PC tub / shower to bath
- Upgrade pedestal to vanity to bath

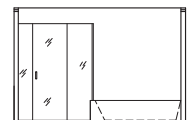
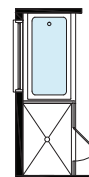


SELECT-3 UPPER FLOOR 4 BEDROOMS WITH 3 BATHS OPTION



SELECT-5 ENSUITE OPTION

- Delete standard fibreglass shower
- Add 60" x 44" tile shower with 10mm glass



SOLID CORE
PLANK

DECK

CARPET

CONCRETE

TILE

LAMINATE

LINO

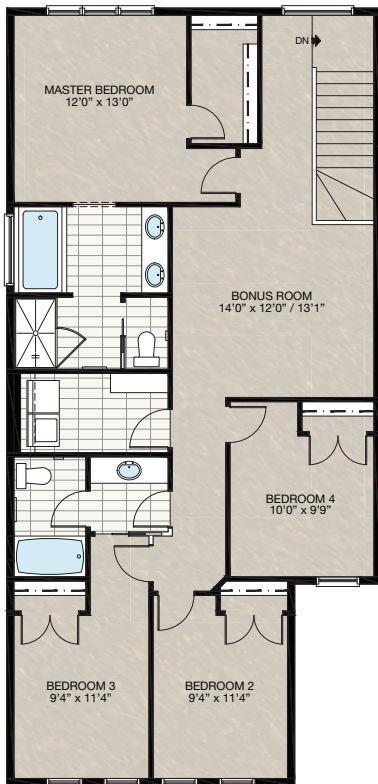
tricohomes.com

FEATURED OPTIONS

THE
KINGSTON
2321 SQ.FT.

SELECT-4

UPPER FLOOR 4 BEDROOMS WITH 2 BATHS OPTION

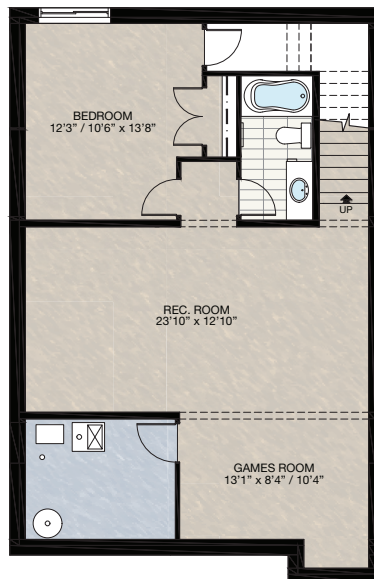


SELECT-6

BASEMENT DEVELOPMENT OPTION 1

Note: this basement development footprint is based on standard main floor layout

- 741 Sq.ft. development area
- Includes finished basement stairwell
- Delete 2'8" door at top of stairwell
- Add 1 riser to stairwell for 9'0" basement ceiling (8'9" headroom clearance)
- 60" x 24" Window changed to 60" x 36"

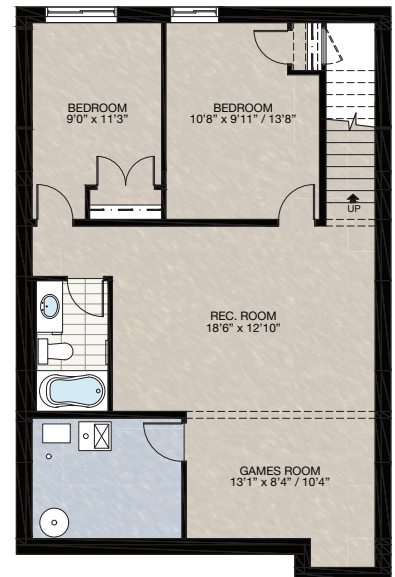


SELECT-7

BASEMENT DEVELOPMENT OPTION 2

Note: this option needs to have concrete patio in lieu of wood deck and basement development footprint is based on standard main floor layout

- 770 Sq.ft. development area
- Add 40" x 40" DHSL to rear for bedroom
- Includes finished basement stairwell
- Delete 2'8" door at top of stairwell
- Add 1 riser to stairwell for 9'0" basement ceiling (8'9" headroom clearance)
- 60" x 24" Window changed to 60" x 36"



Trico Homes is a local home builder, with new single and multi-family homes for sale in Calgary, Okotoks, Chestermere, Cochrane, and Airdrie. Offering a great selection of starter, move-up and semi-estate models in numerous communities, you'll find the house that's just right for you! Look for this model and many others in Beacon Heights in Sherwood, Belmont, Bridgeport, Carrington, Chelsea, Coach Ridge, Cornerbrook, Cranston's Riverstone, Crestmont, D'Arcy, Evanston, Heritage Hills, Hillcrest, Lakeview, Legacy, Legacy Commons Townhomes, Midtown, Nolan Hill, Pine Creek, Redstone, Riviera, Seton, Sirocco, Unity in Seton Townhomes, Verona Townhomes & Viridian Condos in Sage Hill, Wentworth Pointe Townhomes and Wolf Willow.



Renderings are artist's conceptions only and may vary by community and lot selection. Prices, floorplans, specifications and dimensions are approximate and are subject to change without notice. E.O.E. © All rights reserved, including the right if reproduction in the whole or in part without the permission of Trico Homes.

Plan updated as of Sept 28, 2018



tricohomes.com

FEATURED KINGSTON OPTIONS



SELECT-8 SPICE KITCHEN OPTION

- Delete kitchen island
- Reconfigure kitchen
- Relocate pantry
- Add switch & 2 LED downlights to spice kitchen

