

NEW GUINEA, MICRONESIA & MELANESIA

2025 - 2027 VOYAGES

AUSTRALIAN
OWNED AND
FLAGGED

UNRIVALLED
LOCAL
EXPERTISE

A TRUE
EXPEDITION
ETHOS

PURPOSE
BUILT
SHIPS

WARM
AUSTRALIAN
HOSPITALITY

UNIQUELY
DEEP
CONNECTIONS



NEW GUINEA, MELANESIA & MICRONESIA FOR TRUE EXPLORERS

Our long history of operating in remote New Guinea, Melanesia and Micronesia allows us to showcase these secluded frontiers, among the most isolated on the planet. Enjoy warm welcomes as you connect with village life and cultural traditions unchanged for millennia. Explore the famed archaeological site Nan Madol, known as the 'Venice of the Pacific'. Witness the power of nature as you gaze into the depths of an active volcano on Tanna Island. Snorkel and dive at almost every stop including world-renowned lagoons, pristine "blue holes" to remote biosphere reserves. Whilst ashore, admire intricate craft work passed down from generation to generation.

For 40 years, Coral Expeditions has operated with a single purpose - to take small groups of like-minded explorers to remote places with expert guidance and warm Australian hospitality.

There is no better way to explore and experience the spirit of Micronesia, Melanesia and Papua New Guinea than joining the unique itineraries of this epic series.

Expedition Note

These are expedition itineraries covering remote regions. Your Captain and Expedition Team will make changes to the daily schedule when necessary to maximise your experience. These itineraries are indicative - some variation may occur due to weather conditions, safety or local community requirements.

We recommend that you arrive to the embarkation port on the day prior to departure and schedule your own travel arrangements for the day following disembarkation due to unexpected changes that may occur in scheduling.

Voyage Series

- › **Frontier Lands of Papua New Guinea**
12 Nights | Cairns & Madang | Dec 2025
- › **The Louisiades, Solomons and Vanuatu**
16 Nights | Cairns to Port Vila | Jan 2026
- › **Vanuatu, Solomons, Bougainville & New Britain**
16 Nights | Port Vila to Rabaul | Jan 2026
- › **Through the Islands & Atolls of Micronesia**
21 Nights | Rabaul to Sorong | Feb 2026
- › **Papua New Guinea Discoverer**
12 Nights | Madang to Cairns | Oct 2026
- › **Frontier Lands of Papua New Guinea**
12 Nights | Cairns to Rabaul | Oct 2026 & 2027
- › **Beyond Frontier Lands of Papua New Guinea**
10 Nights | Rabaul to Port Moresby | Oct 2026 & 2027
- › **Passage through the Melanesian Arc**
14 Night | Port Moresby to Port Villa | Nov 2026 & Oct 2027



WHY CHOOSE CORAL EXPEDITIONS

Our fleet of three specialised expedition ships and tenders take guests to some of the most beautiful, yet undiscovered islands and coastal regions of the world. Our guests are attracted by our relaxed small ship atmosphere and itineraries larger ships cannot replicate.

At a time when the cruise industry is moving to larger and less personal ships with more gimmicks, we have purposefully limited the size of our ships to maximise the expedition experience. Our cuisine is prepared in small batches from our onboard galley using quality Australian produce and wine. We operate to high Australian standards of safety with qualified Australian crew wherever we go. We were the first to offer interpretive programs reflective of the destinations we visit and to employ Expedition Leaders, Guest Lecturers, Marine Biologists, and SCUBA Instructors – a tradition that continues today.

- **We focus on the destinations.** Connecting guests with nature, culture, and heritage with more time ashore in remote natural areas away from the crowds.
- **A true expedition ethos.** Small ships mean fewer guests and more intimate and personal encounters along the way. We have deep respect and strong connections with the places we visit and maintain flexibility in our planning to make impromptu stops if extraordinary opportunities in nature present.
- **Warm Australian hospitality.** Our all-Australian crew are passionate and proud to share the adventure with you. Always attentive and caring with a friendly and approachable style in keeping with our Australian values.
- **Purpose built ships.** Designed for tropical expedition access, our fleet is comfortable, safe, and manoeuvrable enabling you to get in shallow and close to nature with ease where other operators cannot. Plenty of wide-open public spaces and all outward facing staterooms connect you with the destination.
- **Our unique Xplorer tenders.** The safari jeeps of the sea; our Xplorers enable guests safe and easy access onto excursions into remote rivers, reef systems and isolated beaches. All guests get out on excursion at once with no queues or waiting. Shade canopy to protect from the tropical sun, comfortable seats, open sides and audio systems enhance the journey. These are supported by Zodiacs along the way.
- **Local expertise that is unrivalled.** Our expert guides and local crew have decades of experience to draw on regarding the tides, the charts, and the seasons. We get you to the right place at the right time and always explore in a respectful and caring manner.
- **All inclusive.** Your cruise fare covers everything that matters most including excursions, activities, meals and drinks, expert guides, taxes, and fees. Unpack once and then simply relax and enjoy the experience.
- **Our service and care.** Our friendly staff and crew have one focus – to help you enjoy the trip of a lifetime. We will always be willing to assist and with a genuine care that is part of our culture.

This is true expedition cruising. At Coral Expeditions, we have built our reputation on offering a truly immersive and authentic expedition cruise experience. It is more relevant today than ever and sets us apart from the pack.

FRONTIER LANDS OF PAPUA NEW GUINEA

BETWEEN CAIRNS & MADANG

12 NIGHTS | DEPARTS 18 & 30 DECEMBER 2025

①

Expedition Highlights

- › Throughout the voyage, enjoy high-spirited cultural welcomes and sing sings as we are invited into rarely visited villages to share stories with the locals.
- › Cruise the mighty Sepik River to Bien village, home to skilled wood carvers and renowned artefact markets.
- › Ride ashore on hand-carved outrigger canoes paddled by local guides adorned in ceremonial costumes in the Tufi fjords.
- › Enjoy the tropical waters with snorkelling and diving at the Fly Islands, and the bubbling springs reef at Dobu.
- › Visit World War II battle sites at Buna & Sanananda.
- › Enjoy a high-spirited Oro Province welcome sing sing at Morobe as we are invited into remote villages.
- › Learn of the mythical and spiritual tales of Dei Dei Hot Springs, and witness the boiling geyser bubble and steam.
- › Learn how the Trobriands became known as the 'Islands of Love'.

②

③

Includes Charter Flight*

Limited seats available

Charter Flight
Included



ITINERARY: 12 NIGHTS > BETWEEN CAIRNS & MADANG

DEPART CAIRNS

Arrive at Trinity Wharf for boarding at 7:30am for a 9:00am departure. Cruise across the Coral Sea and spend the afternoon relaxing as you are welcomed onboard *Coral Adventurer*. Join our expedition staff as they introduce you to the journey and the many experiences you will enjoy. This evening, join the Captain's welcome drinks and meet your crew and fellow guests as the sun sets.

Throughout this expedition, your Expedition Team may make changes to the itinerary in order to maximise your expeditionary experience. Visiting these remote communities is subject to approval of the local landowners. Below are the key destinations we visit.

SAMARAI ISLAND

Located off the south-eastern tip of New Guinea in the China Strait, choose to explore the colonial settlement of Samarai, with a chance to purchase pearls from a local pearl farmer, or go for a snorkel at nearby Ebuma Island.

DOBU ISLAND & DEI DEI HOT SPRINGS

We are greeted by a flotilla of canoes as we approach the Dobu anchorage. Join our Expedition Staff on a walk to Dei Dei Hot Springs, where the people share their mythical and spiritual tales of these hot water and mud springs. Learn of the history of the Kula Ring at Dobu Island and meet the local primary school children, who will welcome us with a traditional song. There will also be an opportunity to snorkel the incredible Bubbling Springs Reef.

TROBRIAND ISLANDS

Historically known as the 'Islands of Love', the Trobriand Islands offer a glimpse of traditional cultures largely unspoiled by outside influence. Be greeted at the small island of Kuiawa with an enthusiastic Trobriand's welcome.

TUFI FJORDS

Today enjoy a true highlight as we discover the scenic beauty of the Tufi Fjords. Featuring 25 individual canyons with sheer basalt cliffs, these are the only fjords in Papua New Guinea and offer a wealth of sightseeing opportunities. Aboard Xplorer, travel to the entrance of one of Tufi's most scenic fjords where you will be met by local villagers in traditional dress aboard outrigger canoes. Have the opportunity to board one of the outriggers as the locals paddle up the creek under the rainforest canopy. Here, spirits and sorcery remain integral to village life, and we will learn about bush medicines, fire making, mat weaving and traditional tattooing. Deep in the rainforest, have the chance to witness the tribesmen perform a traditional sing sing in their ceremonial dress. Later, snorkel or dive over the fjords' fringing reef systems or relax at the local resort. If weather permits, venture to the outer reefs for world class snorkelling and diving.

BUNA & SANANANDA

We land at Buna beach, home to some of the toughest fighting in the World War II Pacific campaign. Enjoy a welcome from the local residents, and then be guided through the jungle to visit the areas where Allied forces clashed with Japanese forces. In Sanananda, see the local monuments and pay tribute to fallen Australian soldiers at the war museum, located at the far end of the Kokoda Track. You'll also have the opportunity to visit the lush gardens surrounding the village.

MOROBH HARBOUR

We arrive at Morobe Harbour early in the morning and cruise in the Xplorer to view the stunning forest from the Mou River. We receive a warm Oro Province welcome and enjoy exploring the village with local guides. At high tide, we may be able to cruise further into a picturesque hidden bay.

KAMIALI (LABABIA VILLAGE) & FLY ISLANDS

In the morning, during a relaxing visit to the village, we are entertained with singing and dancing performances and join a local guide around the village. Board an outrigger canoe to explore further up the river with a guide and experience snorkelling and diving at the Biangatu Island reef off the Fly Islands.

DREGERHAFEN

At the beautiful anchorage of Dregerhafen, you will enjoy a high-spirited traditional welcome in Gingala village, and explore the market which is famous for Tami bowls and timber paddles before the chance to mingle with the locals and stroll through the village. After lunch enjoy snorkelling, diving and kayaking in the blue waters of the lagoon.

KARKAR ISLAND

Visit Busen or Maringis Villages at Karkar Island and enjoy welcome sing sings before touring the copra and cocoa processing areas. In the afternoon there is opportunity to snorkel off the fringing reef and bommies close to shore.

SEPIK MOUTH, BIEN VILLAGE & KADOVAR VOLCANO

As we arrive at the mouth of the famed Sepik River we are greeted with stunning views of the landscape and this mammoth river which cuts a swathe through lush forest. Our first stop on the Sepik River is at the village of Bien, where local villagers greet us on their canoes and follow with dance performances. There is an opportunity to purchase highly sought-after hand-crafted artefacts, masks and carvings at the Sepik market. Upon departure from the river mouth, enjoy the Captain's farewell drinks with the smoking cone of Kadovar Volcano as your backdrop.

DAY 13: ARRIVE MADANG

Arrive in Madang to disembark *Coral Adventurer* at 8:00am. For those joining our post-cruise charter flight back to Cairns, this will be a direct flight, with Coral Expeditions staff member to accompany you. Enjoy an included tour of Madang with a member of our expedition team before boarding your charter flight to Cairns.

NOTE: *The itinerary shows departing Cairns and arriving Madang. For the opposite direction, the itinerary is in reverse.*

EMBARK MADANG

Make your own way to the Cairns International Airport for check-in and charter briefing at 7:30am before joining the charter flight departing 10:30am. After the charter flight guests will be transferred from Madang Airport to Madang Resort. Light finger food and refreshments provided. There will be time to visit markets along the waterfront outside the resort before a transfer to join the ship at 4:00pm before a 5:00pm departure. This evening, join the Captain's welcome drinks and meet your crew and fellow guests as the sun sets.

DISSEMBARK CAIRNS

Disembark *Coral Adventurer* at 8:00am in Cairns and bid farewell to new-found friends, the Master and crew. A post cruise transfer to Cairns CBD hotels or the airport is included.

THE LOUISIADES, SOLOMONS & VANUATU

CAIRNS TO PORT VILA

16 NIGHTS | DEPARTS 12 JANUARY 2026

①

Expedition Highlights

- > Cruise, snorkel, and dive in the stunning and remote Louisiade Archipelago of Papua New Guinea, and swim in one of Espiritu Santo's iconic 'blue holes'.
- > Visit Skull Island in Vonavona Lagoon, one of the most sacred sites in the Solomons which is the final resting place of many slain warrior chiefs.
- > View diverse wildlife at Tetepare, the conservation jewel of the South Pacific while walking through the jungle.
- > Learn about local 'kastom' and kula ring trading during village visits and witness the famous Rom Dance performed at volcanic Ambrym, the black magic centre of Vanuatu.
- > Snorkel and dive in the world's largest double barrier enclosed reef saltwater lagoon at Marovo Lagoon, over healthy reefs teeming with fish life.

②

③

Note: No Charter Flight from Port Vila

PAPUA NEW GUINEA



ITINERARY: 16 NIGHTS > CAIRNS TO PORT VILA

DAY 1: DEPART CAIRNS, AUSTRALIA

Arrive at Trinity Wharf (berth to be advised) at 7:30am, where there is time to settle into your stateroom before our 9:00am departure.

Take the time to become acquainted with all the facilities onboard *Coral Adventurer*. There will be morning tea available upon boarding before we cruise out to the Coral Sea towards Papua New Guinea. Gather in the Bridge Deck lounge for a safety briefing, snorkelling briefings, and presentations by lecturers and expedition staff. As dusk falls, mingle with your fellow travellers, the Captain and crew for the Captain's Welcome Drinks.

This itinerary includes a total of 2 sea days.

Throughout this expedition, your Expedition Team may make changes to the itinerary in order to maximise your expeditionary experience. Visiting these remote communities is subject to approval of the local landowners. Below are the key destinations we visit.

CORAL SEA

Today we spend a relaxing day traversing the Coral Sea with presentations by our expert Guest Lecturers. Explore our extensive onboard library and spend the day with a selection of games or simply gaze over the seas.

SAMARAI ISLAND, PAPUA NEW GUINEA

Guests will be welcomed with a Sing Sing, and there will be a chance to purchase handicrafts and pearls from locals or go for a snorkel at nearby Ebuma Island. Now, as a National Historical Heritage Island, guests can stroll through remnants of its vibrant history, offering a poignant glimpse into a bygone era amidst its quiet streets.

THE LOUISIADE ARCHIPELAGO, PAPUA NEW GUINEA

Learn about the local culture before snorkelling or diving at remote reefs. Venture into Deboyne Lagoon to snorkel over the World War II wreck of a Japanese 'Zero' fighter plane. Discover the rugged beauty of the Calvados Islands, a chain of atolls characterised by their limestone karsts. In the evenings, relax with beachside drinks on idyllic islands, explore sea caves, and unwind at Panasia Island, home to one of Papua New Guinea's most stunning beaches.

LAUGHLAN (BUDIDUNA) ISLANDS, PAPUA NEW GUINEA

Laughlan Islanders specialise in canoe building and in this remote corner of the world we find seagoing canoes under construction. Interact with the friendly villagers of Budiduna who share their lifestyle of gardening, fishing, and Kula ring trading. Later, snorkel or dive on the outer reef, where we may see turtles, wrasse, and spinner dolphins in the warm, clear waters.

GIZO & NJARI REEF, SOLOMON ISLANDS

Wander through Gizo's open-air markets, which showcase a bounty of tropical fruits and fresh fish, as well as crafts by the region's legendary wood and stone carvers. In the afternoon, we cruise past Kennedy Island before enjoying water activities at Njari Reef. Njari Reef is a merge point for oceanic currents and is said to have one of the highest fish counts in the world.

VONAVONA LAGOON, SOLOMON ISLANDS

We head to Vonavona Lagoon, a large lagoon located in the New Georgia Islands of the Western Province. Teeming with colourful fish and hundreds of islets, the lagoon offers opportunities for snorkelling and scenic cruising. Guests will have a chance to visit Skull Island - a small island that is home to a shrine of some 50 male "trophy" skulls which span from 300 to 1,000 years old. Later in the day, enjoy guided jungle walks on Lola Island.

TETEPARE, SOLOMON ISLANDS

We visit Tetepare, abandoned 150 years ago, now protected by a unique conservation project run by the Tetepare Descendants Association. A vast array of plants and animals make their home on the island - it supports nesting populations of three species of turtle, the world's largest skink, hornbills, and tiny pygmy parrots.

Stroll through the forest while you learn more about how the island's traditional landowners rejected logging offers and came together to save this island's biodiversity. You will also have an opportunity to see the turtle tagging process, and finish with snorkelling over the island's flourishing reefs.

MAROVO LAGOON, SOLOMON ISLANDS

Marovo Lagoon is the world's largest double barrier enclosed saltwater lagoon. Today, you will be welcomed to this natural wonder by the locals with traditional dancing. Learn about village life and observe the work of expert woodcarvers, who are justifiably famous for the intricate pieces they create from ebony with inlays of mother-of-pearl. Spend the afternoon exploring Marovo Lagoon's coral reef ecosystems, where the waters teem with tropical fish and boast exceptional diving and snorkelling sites.

FLORIDA GROUP, SOLOMON ISLANDS

The Nggela Islands, also called the Florida Islands, were the site of some pivotal battles during World War II. We will visit Tulagi town, once the capital of the Solomon Islands, before it was moved to Honiara in World War II. Later there will be opportunities for snorkelling and diving, with time to view the MS World Discoverer shipwreck at Roderick Bay.

MAKIRA- STAR HARBOUR, SOLOMON ISLANDS

Dive into the history of Star Harbour which is at the southern end of Makira and is a sub-provincial headquarters for the Makira-Ulawa Province. Beginning with a colourful welcome in the morning, you will enjoy a cultural performance before exploring the village. Our expert guides will share the harbour's World War II history before we spend the afternoon snorkelling and birdwatching off Nafinua (frigate bird) Island.

NENDÖ, SOLOMON ISLANDS

Nendö Island is the largest of the Santa Cruz Group. Here, you can view and purchase quality artefacts created by the skilled craftsmen of the region. Later, head to Luowa village where you can enjoy a cultural performance by the locals and an opportunity to snorkel over the fringing reef.

LOH ISLAND - TORRES GROUP, VANUATU

Learn about the volcanic origin of these scenic islands which comprise of four islets: Hiu, Tegua, Loh and Toga. Immerse yourself in the culture of the leh-temet on Loh Island, where vibrant ritual headdresses called temet are utilised during special singing and dancing ceremonies to honor primordial spirits. There will also be an opportunity to dive and snorkel from the white sandy beaches.

ESPIRITU SANTO, VANUATU

Espiritu Santo is the largest island in Vanuatu. In the aftermath of World War II, the island's southeastern point earned the name, 'Million Dollar Point' after American soldiers sunk the vehicles of their retired task force after being unable to sell them. Espiritu Santo and its surrounding islands are known for their world class beaches and 'blue holes' - natural swimming pools located deep within the jungle. Here we will avoid the well-trodden locations, in favour of less touristed destinations with opportunities for snorkelling, diving and 'blue hole' swims.

AMBRYM, VANUATU

Home to majestic Benbow and Marum volcanoes, Ambrym is home to one of the most active volcanoes in the New Hebrides Arc. Despite the volcanic activity, Ambrym is home to around 7,000 inhabitants, most of which live in the 'safe zone' corners of the island that is known as the 'black magic' centre of Vanuatu. Today, witness the Rom Dance, one of the most iconic traditional dances of Vanuatu.

DAY 17: DISEMBARK PORT VILA, VANUATU

Disembark at 8:00am and enjoy complimentary transfers to Port Vila hotels and the airport.

VANUATU, SOLOMONS, BOUGAINVILLE & NEW BRITAIN

PORT VILA TO RABAU

16 NIGHTS | DEPARTS 29 JANUARY 2026

①

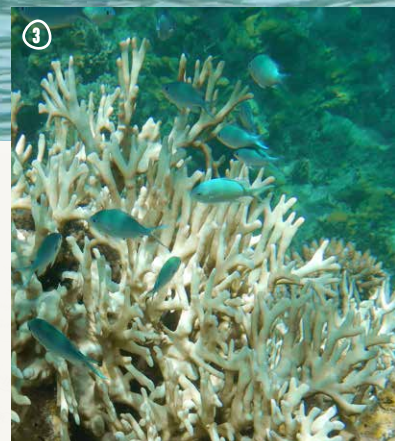
Expedition Highlights

- › Witness the power of nature as you gaze into the depths of an active volcano on Tanna Island.
- › Discover the hidden gems of Maewo Island, renowned for its pristine waterfalls and sea caves.
- › Immerse yourself in Vanuatu's rich culture with a mesmerising performance of the famous Snake Dance on Rah Island.
- › Watch the women perform the Water Dance at Marau Sound, and snorkel over colourful coral gardens enriched by the currents of the Tasi Mauri or 'weather coast'.
- › Contribute to conservation efforts by releasing turtle hatchlings at the Arnavon Islands.
- › Embark on a two-day exploration of the autonomous Region of Bougainville.
- › Tour the deserted 'ghost town' district of Rabaul before journeying to Kokopo, including visits to the war museum and volcano observatory.

②



③



Includes Charter Flight from
Rabaul to Cairns



IMAGES 1 Enjoy the women's cultural Water Dance performance | 2 Mt Yasur volcano, Tanna Island | 3 Explore the Lagoons of Nguna

ITINERARY: 16 NIGHTS > PORT VILA TO RABAU

DAY 1: PORT VILA, VANUATU

Board *Coral Adventurer* at 3:30pm for a 4:30pm departure. Settle into your cabin and relax as we set sail towards Vanuatu's outer islands. In the evening, join the Captain for welcome drinks and meet your crew and fellow guests as the sun sets.

This itinerary includes 1 day at sea.

Throughout this expedition, your Expedition Team may make changes to the itinerary in order to maximise your expeditionary experience. Visiting these remote communities is subject to approval of the local landowners. Below are the key destinations we visit.

TANNA, VANUATU

Ride a 4WD to the base of active Mt Yasur volcano and enjoy a guided walk with your Expedition Leader to the caldera's rim, witnessing breathtaking views of the volcano's smoking centre. Engage with the locals to delve deeper into the Tannese culture and unravel the enigma surrounding John Frum Cargo Cult – a revered messenger who prophesied the arrival of prosperity to the island through American forces during World War II, believed to dwell within Mt Yasur.

NGUNA, VANUATU

We make our way to Nguna Island which offers a diverse range of activities, from walks and snorkeling to immersive cultural experiences. Embark on an hour-long trek to Mt Marow or explore the local village to experience their culture. Enjoy a well-earned lunch prepared by our chefs on board before heading out to explore the Nguna-Pele Marine Protected area, showcasing vibrant coral reefs, sea grass beds, mangrove forests, and intertidal lagoons.

MALEKULA, VANUATU

Malekula is the most culturally and linguistically diverse island of Vanuatu with the primary groups clustered into Big Nambas and Small Nambas. The island's lush landscapes offer opportunities for adventure, along with its abundant flora and fauna providing a glimpse into its untouched natural beauty. Visit a local village and learn about the unique culture of this island: conclude your visit with a relaxing swim on the beach or snorkel over the stunning reef.

MAEWO, VANUATU

Today we head to Maewo, a remarkable island famed for its waterfalls and springs. Enjoy bushwalking, birdwatching and waterfall activities throughout the day before cruising up the spectacular western coastline, with the opportunity for Xplorer rides to view sea caves.

MOTO LAVA & RAH ISLAND, VANUATU

Known for its white sand beaches and coral reefs, Rah is the smallest but most well-known island in the Banks region. Experience the allure of Rah Island, renowned for hosting one of Vanuatu's most famous cultural dances – the Snake Dance, performed by the men in the village, accompanied by traditional drums and kastom songs. Challenge yourself with an optional guided climb of Mota Lava's Sleeping Mountain.

SEA DAY

Enjoy a peaceful day at sea with presentations by our expert Guest Lecturers as we make our way towards Santa Ana in the Solomon Islands.

SANTA ANA (OWARAH), SOLOMON ISLANDS

Embark on a cultural adventure at Santa Ana, a small island southeast of San Cristobal, known for its distinctive bone fishhooks and creative fishing floats. Upon arrival, receive a warm welcome from locals, greeted by village warriors wielding swords and blowing conch shell horns. Explore the island's lush landscapes on a guided walk led by a naturalist, traversing shady forests adorned with vibrant orchids, before taking to the water for snorkelling.

MARAU SOUND, SOLOMON ISLANDS

Marau Sound is a geographical crossroad separating Guadalcanal's calm northern waters from its Tasi Mauri or 'weather coast'. Start your day with the option to snorkel or kayak in the turquoise waters. In the afternoon, visit a village on Marapa Island known for its famous water dancers. Choose from walking options leading to waterfalls, perfect for spotting rainforest wildlife. Divers are treated to an incredible wall dive, while snorkelers enjoy diverse marine experiences. Relax on a sand cay where locals offer shelter, umbrellas, and coconut drinks- a perfect way to end your day.

MALAITA, SOLOMON ISLANDS

Step ashore to experience the diverse landscapes of the Solomons' most populous island, marked by its involvement in the 'Tension' dispute from 1998 to 2003. The 'saltwater people' of the lagoons live on small artificial islands built up on sand bars, where they were forced to flee from the headhunters. Visit Langa Langa Lagoon or Auki to learn about their culture and headhunting history. Later in the day, there will be opportunity for snorkelling in the lagoon.

RUSSELL ISLANDS, SOLOMON ISLANDS

Explore the World War II history of Russell Islands, where the unopposed occupation by US forces was one of the first steps in the Allied advance along the Solomon Islands. The island's abundant coconut plantations are now the largest on any Pacific Island. This is a great spot for snorkelling and diving: the sea floor is littered with World War II wreckage. Listen to a 'bamboo band' performance during a visit to a local village.

ARNAVONS, SOLOMON ISLANDS

Spend the day exploring the Arnavon Islands marine reserve, home to the largest rookery of endangered Hawksbill Turtles in the South Pacific Region. In 1995 the US based Nature Conservancy helped three local communities come together to create the Arnavon Community Marine Conservation area - it was the first protected area to be established within the Solomons and covers over 40,000 acres of land and sea. Later in the day, travel ashore at Kerehikapa Island and see the magical moment of turtle hatchlings emerging from their nests.

CHOISEUL BAY - CHOISEUL ISLAND, SOLOMON ISLANDS

Choiseul Island's northwest is our last stop in the Solomon Islands. In this beautiful bay surrounded by mountains, we will make our way to Taro Island which is known to be the oldest known site of agriculture in the Pacific. The island is also known for its white sandy beaches where you can further enjoy water activities.

TWO DAYS IN THE AUTONOMOUS REGION OF BOUGAINVILLE

Spend two days exploring the Autonomous Region of Bougainville - a truly 'off the beaten track' destination where tourism remains minimal. The region has two main islands, Bougainville being mountainous, and Buka largely characterized by flat terrain. Snorkel vibrant reefs off the coastline and tour sites of historical significance to its tumultuous past.

RABAU & DUKE OF YORK ISLANDS, PAPUA NEW GUINEA

See the ruins of Rabaul, the hot springs and Mt Tavurvur, World War II bunkers and the famous Rabaul Volcano Observatory. You have the option to embark on an ascent of Mt Tavurvur Volcano, while snorkeling excursions around the Duke of York Islands await those seeking underwater adventures.

DAY 17: RABAU, PAPUA NEW GUINEA

Disembark at 8:00am and join a tour of Kokopo, including the township, war museum and bustling markets. Finish with lunch and time to relax at the Rapopo Plantation Resort before being transferred to the airport for your charter flight to Cairns.

Note: post-cruise tour is only included for those passengers that have booked the charter flight

THROUGH THE ISLANDS & ATOLLS OF MICRONESIA

RABAU TO SORONG

21 NIGHTS | DEPARTS 14 FEBRUARY 2026

①

Expedition Highlights

- > Visit all four states of the Federated States of Micronesia including Yap, Chuuk, Pohnpei and Kosrae.
- > Traverse the fringing reefs of Ant Atoll to explore the pristine waters and spot several Micronesian birds, which the islet has been rewarded with four endemic birds: Pohnpei parakeet, Pohnpei white-eye, Pohnpei flycatcher and the Pohnpei fantail.
- > Discover some of the World War II Japanese wrecks scattered across the floor of Truk Lagoon - warships, merchant ships and aircraft.
- > Learn about the unique stone currency and construction techniques of the Yapese people.
- > Explore the famed archaeological site Nan Madol at Pohnpei, known as the 'Venice of the Pacific'.
- > Meet the locals that call small remote atolls home and learn about their culture and way of life.
- > Be welcomed by lines of happy children and receptions from village Chiefs.
- > Snorkel and dive at almost every stop - from world-famous lagoons to remote biosphere reserves.

②



③



Includes Charter Flight from Cairns to Rabaul and Sorong to Darwin

IMAGES 1 Dive in Truuk Lagoon | 2 Lelu Ruins, Kosrae
| 3 Traditional practices, Sorong



ITINERARY: 21 NIGHTS > RABAU TO SORONG

This itinerary includes a total of 8 full days and 5 half days at sea.

DAY 1: DEPART RABAU, PAUPA NEW GUINEA

Start your journey by boarding a direct flight from Cairns to Rabaul. Once you reach Rabaul, sit back and relax at the Rapopo Resort before boarding the ship at 3:00pm with departure set for 4:00pm. Guests opting for the charter flight will have pre-embarkation details outlined in the pre-cruise documentation, 3 months prior to departure. For guests not taking the charter flight, the meeting venue will be outlined in the pre-cruise departure documentation, also 3 months prior to departure.

Throughout this expedition, your Expedition Team may make changes to the itinerary in order to maximise your expeditionary experience. Visiting these remote communities is subject to approval of the local landowners. Below are the key destinations we visit.

SEA DAY

Today, you will be introduced to Micronesian culture and protocols. There will be briefings on snorkeling, diving, and other activities including presentations by guest lecturers.

KAPINGAMARANGI ATOLL, MICRONESIA

Kapingamarangi is the most southerly point of Micronesia and a Polynesian outlier, located some 740km from the main island, the state of Pohnpei. The total area of the atoll including the lagoon is 74km sq, it has 33 wooded islets on the eastern side and a population of around 500. Here, you will get to visit the local village where islanders are well known for their wooden carvings. There is also the opportunity to purchase handmade souvenirs and swim in the pristine azure waters on our visit.

SEA DAY

KOSRAE, MICRONESIA

Known as the 'island of the sleeping lady'. Explore the enigmatic Lelu Ruins site, once an impressive city covering 20 hectares with an extensive canal system, social structure and pyramidal tombs. Enjoy snorkelling and diving, or kayaking in the mangrove habitats. Explore the island by guided jungle walks and visit the Giant Clam Farm, or spend time conversing with the local people including a traditional performance.

SEA DAY

POHNPEI (KOLONIA), MICRONESIA

Visit the archaeological site of Nan Madol, a stone city with many ocean-filled canals and channels. Known as the 'Venice of the Pacific', the ancient city was a royal civilisation in the 12th century. Enjoy a walk to the Kepiho Falls and lunch.

ANT ATOLL, MICRONESIA

Walk through the Ant Atoll UNESCO biosphere preserve which is owned by the Rohsa (leader/king). Rohsa has refused all attempts to develop this area preferring it to remain in its natural state and is home to a stunning coral reef where you can snorkel or dive. Home to some of the largest colonies of terns, black noddies and frigatebirds in the Pacific, the lagoon also has a thriving population of grey reef sharks. After exploring the island, enjoy an exclusive remote BBQ lunch set up by our crew.

SEA DAY

TRUK LAGOON, MICRONESIA

With a protective reef of 225km enclosing the natural harbour, Truk lagoon was the perfect location for Japan's World War II South Pacific base. It became the site of a major USA attack called Operation Hailstone in Feb 1944, leaving behind many wrecks which now provide world-class wreck diving. This is a great opportunity for certified divers to do up to 3 dives on various wrecks. Our Expedition Leader will arrange for a historical guided walk including the abandoned Air Force base on Etten Island.

POLUWAT, MICRONESIA

At Poluwat Atoll, stroll through the local village for a guided look into the lifestyle and culture of the local people. Enjoy a relaxing afternoon swim in the crystal-clear waters and then treat yourself to afternoon tea and Mimosa's on a remote uninhabited atoll.

LAMOTREK, MICRONESIA

Be welcomed into the village with leis, local dancing and singing. Local guides will then take you around the village to learn about medicines and local crafts. Lamotrek is a coral atoll made up of three islands Falaite, Pague and Lamotrek. Here, you might witness demonstrations of weaving and the creation of traditional foods as well as you can go canoe sailing with the locals or enjoy a snorkel/swim or dive.

IFALIK, MICRONESIA

One of the most traditional villages in Micronesia, Ifalik is determined to maintain a cultural integrity that we are privileged to experience. It is located 700 km southeast of Yap Island. The total land area is 1.47sq. km but has a large lagoon for guests to visit. Learn the history behind Ifalik being known as a "warrior island". Before European contact, its warriors invaded the outer islands in Yap as well as some of the outer islands in Chuuk. Be welcomed by villagers in traditional ceremonial headdresses and later enjoy a guided walk where you can watch and try the local art of weaving and basket making. Enjoy another spectacular snorkel/swim or dive as well as bird watching on a remote beach.

SEA DAY

YAP ISLAND, MICRONESIA

Spend your day at Yap by visiting the village of Kaday with local guides - home to the Stone Money Bank. Yap State is one of the four states of the Federated States of Micronesia. The main island of Yap is famous for its stone currency - limestone discs (Rai) spanning in size from 4m to 4cm in diameter. Experience the famous Bamboo dance performed by young dancers and spend the rest of your day snorkelling or diving with local guides.

SEA DAY

PALAU, REPUBLIC OF PALAU

Officially the Republic of Palau is an Island country in the Micronesian sub region of Oceania in the western Pacific, the republic consists of 340 islands and connects the chain of the Caroline Islands with parts of the FSM. While the ship is anchored in Koror, certified divers have the opportunity to embark on 1 or 2 dives guided by locals. For those preferring snorkeling, explore the stunning Rock Island with local guides. Additionally, immerse yourself in the city's culture with a guided tour, including a visit to the excellent local museum.

SEA DAY

HELEN REEF OR SONSOROL, PALAU

Meet with local rangers for insights into turtle conservation efforts before embarking on a guided nature walk. Engage in birdwatching activities and then dive into the nearby reef systems for an unforgettable snorkelling, swimming, or diving experience. Located in the southwest Islands of Palau, Helen Reef is a large, enclosed Atoll with extensive reef flats and a large channel complex and a small island that is a critical sea turtle nesting site and a nesting site for many sea bird species.

SEA DAY

DAY 22: SORONG, INDONESIA

We arrive at Sorong and prepare for a 10:00am disembarkation. Our crew will be there to help with additional information about charter flights. Guests can opt for a local Sorong tour with our guides who can share stories about its history and culture.

CHARTER FLIGHT FROM SORONG TO DARWIN

Your fare includes a charter flight from Sorong to Darwin. Please contact our reservations team for more information.

PAPUA NEW GUINEA DISCOVERER

MADANG TO CAIRNS
12 NIGHTS | DEPARTS 13 OCTOBER 2026



①

Expedition Highlights

- > Explore the very remote southwestern tip of New Britain Island, where evidence of ancient trade dates back 3,500 years.
- > Dive and snorkel pristine coral reefs supporting community-driven marine conservation programmes.
- > Experience authentic village life among Papua New Guinea's 850 distinct tribal cultures and languages.
- > Support Dr Marianne George's traditional voyaging revival project, helping preserve endangered Pacific navigation knowledge for future generations.
- > Gain insights from our expert Guest Lecturers, who have worked alongside us in the region for over twelve years.



Includes Charter Flight
from Cairns to Madang



ITINERARY: 12 NIGHTS > MADANG TO CAIRNS

DAY 1: MADANG

Make your own way to the Cairns International Airport for check-in and charter briefing before joining the charter flight. After the charter flight guests will be transferred from Madang Airport to Madang Resort, where light finger food and refreshments will be provided.

Board *Coral Discoverer* at 4:00pm in this bustling Papua New Guinea port town, where your remote island adventure begins. Join our expedition staff as they introduce you to the journey and the many experiences you will enjoy. This evening, join the Captain's welcome drinks and meet your crew and fellow guests as the sun sets.

UMBOI & TUAM ISLAND

Discover volcanic Umboi's cultural heritage, then explore Tuam Island's rich trading history dating to the Holocene era and unique windbreak innovations.

KUMBUN ISLAND & PULIA RIVER

Cross the Dampier Strait to visit Apalo Village on New Britain Island's remote southwestern tip. Engage with local fishing life and the methods and customs that exist today. In the afternoon, cruise the jungle-flanked Pulia River by Xplorer.

LABABIA VILLAGE & BIANGATU ISLAND

Experience colourful welcome rituals and traditional bilum weaving demonstrations at this seaside village on Papua's mainland. Spend the afternoon exploring the biodiverse underwater worlds of Biangatu Island. Snorkelling and diving is available in Biangatu Island.

SEA DAY

Enjoy onboard activities and presentations as we sail towards the remote islands of southeastern Papua New Guinea. Take time to process the cultural connections you've already made on this unique voyage.

GOODENOUGH & WAGIFA ISLAND

Engage with vocational training and climate resilience projects in Bolu Bolu Village. Visit the community tourism school and enjoy water activities at nearby Wagifa Island, perfect for snorkelling and diving.

SEWA BAY & BOIA BOIA WAGA ISLAND

Choose between a moderate jungle walk to search for wildlife or visit Pwanapwana Village for a cultural experience. Later, relax on the white beaches of uninhabited Boia Boia Waga Island. Snorkelling and diving is available.

DEBOYNE ISLAND & SURROUNDING LAGOONS

The ship will be positioned for the best water activities based on conditions. The Deboyne Lagoon features diverse reefs and islands teeming with marine life, offering excellent opportunities for kayaking and snorkelling.

EXPLORATION OF THE CALVADOS CHAIN

Discover pristine atolls in the Calvados chain. Your Expedition Team will source the best locations for snorkelling, diving, swimming and kayaking amongst these remote coral formations.

TAWALI & NUAKATA ISLAND

This morning, rise early for a walk in search of endemic bird-of-paradise through uneven jungle pathways. Enjoy a traditional Mumu lunch before visiting Nuakata Island to learn about the Hale Vaka Initiative and traditional canoe building.

SAMARAI

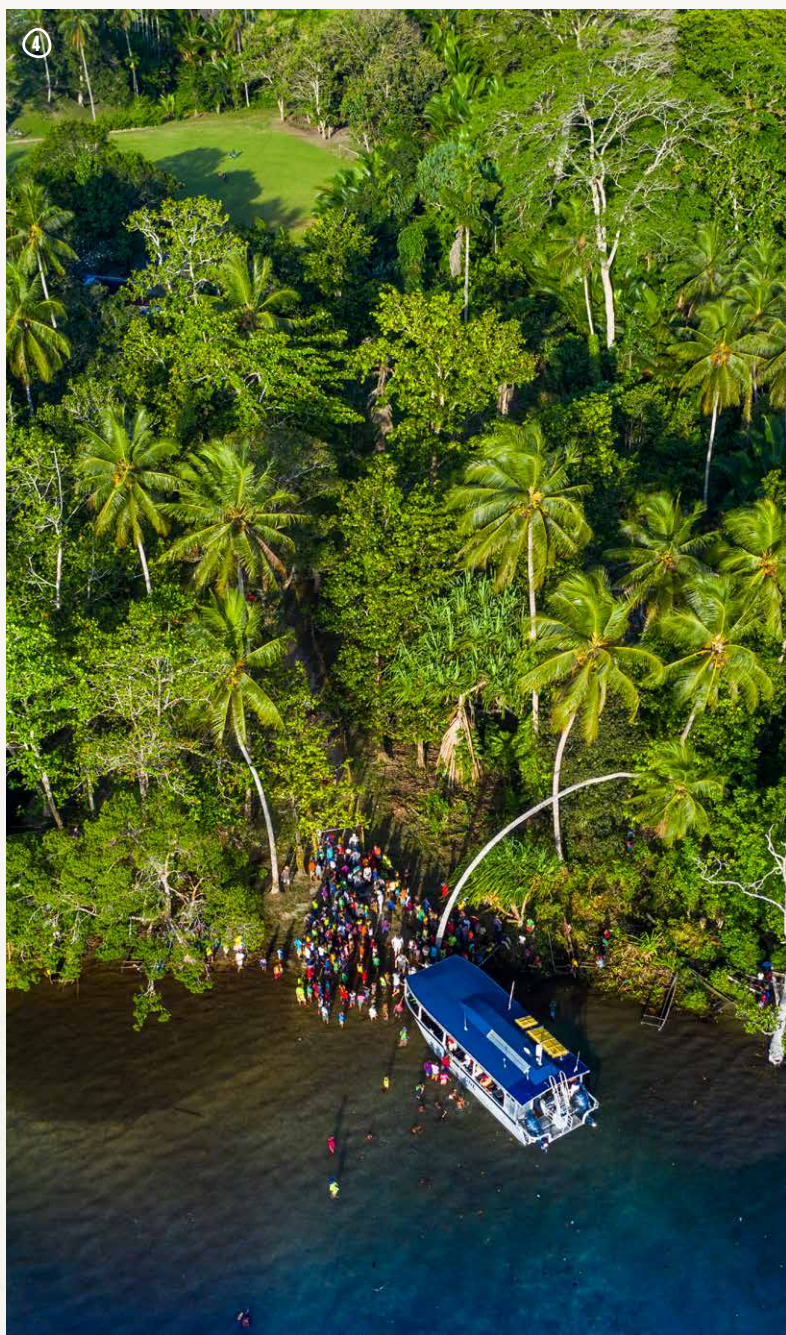
Discover the island of Samarai, once a key maritime hub connecting Australia and East Asia. Stroll through its vibrant local markets and learn about its pivotal role in regional trade and navigation before continuing towards the Coral Sea.

CORAL SEA

Enjoy a relaxing day at sea as we sail towards Australia. Reflect on your Papua New Guinea discoveries and enjoy presentations about the remarkable places you've visited.

DAY 13: ARRIVE CAIRNS

Disembark at 8:00am and enjoy complimentary transfers to Port Vila hotels and the airport.



FRONTIER LANDS OF PAPUA NEW GUINEA

CAIRNS TO RABAUL

12 NIGHTS | DEPARTS 16 OCTOBER 2026, 22 SEPTEMBER 2027

①

Expedition Highlights

- > Walk to the mythical Dei Dei Hot Springs and snorkel the bubbling springs reef at Fergusson Island.
- > Snorkel and dive the world-famous reefs of the picturesque Tufi fjords, transported ashore on outriggers.
- > Pay tribute to Australian and Japanese soldiers who lost their lives during the battle of Buna.
- > Visit the craft markets of Dregerhafen, famous for their traditional tami bowls and timber paddles.
- > Cruise up the mighty Sepik River to meet Papua New Guinea's most talented artists and carvers.
- > Explore Kimbe Bay's coral crucible, home to over 860 tropical fish species and 400 coral varieties.

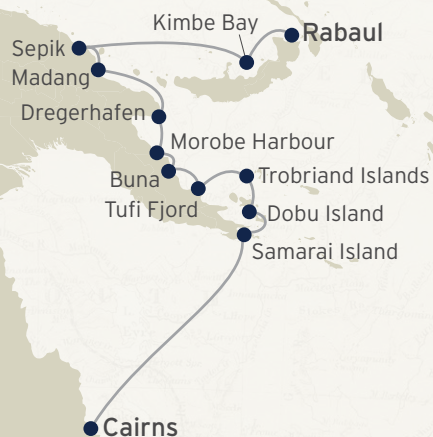
②



③



Note: No Charter Flight from Port Vila



ITINERARY: 12 NIGHTS > CAIRNS TO RABAU

DAY 1: DEPART CAIRNS

Arrive at Trinity Wharf (berth to be advised) for boarding at 7:30am for a 9:00am departure. Cruise across the Coral Sea and spend the afternoon relaxing as you are welcomed onboard *Coral Adventurer*. Join our expedition staff as they introduce you to the journey and the many experiences you will enjoy. This evening, join the Captain's welcome drinks and meet your crew and fellow guests as the sun sets.

AT SEA

Spend today relaxing onboard, listen and learn from our Guest Lecturer presentations, or enjoy an engine room or bridge tour.

SAMARAI ISLAND

Clear into Papua New Guinea at this historic former administrative capital, once the second largest settlement after Port Moresby. Choose to explore colonial Samarai and purchase pearls or snorkel at nearby Ebuma Island.

DOBU ISLAND & DEI DEI SPRINGS

Walk to the mythical Dei Dei Hot Springs, where locals share spiritual tales and still cook food in palm frond baskets. Learn about the ancient Kula Ring trading network at Dobu Island and snorkel the bubbling springs reef.

KUIAWA ISLAND | TROBRIAND ISLANDS

Visit the famous 'Islands of Love' where Trobriand Islanders employ traditional magic to grow better produce. Witness cultural performances, browse local markets and swim off pristine beaches in this Polynesian-influenced community.

TUFI FJORD

Explore the spectacular fjords of Cape Nelson, famous for tapa cloth production. Enjoy cultural demonstrations, nature walks, and world-class snorkelling and diving amongst uncharted reefs in this dramatic landscape.

BUNA & SANANANDA

Pay tribute at these significant World War II battlefields where fierce fighting occurred between Australian, American and Japanese forces. Visit the village-built War Museum and experience traditional welcomes honouring all sides.

DREGERHAFEN, MOROBE

Experience a high-spirited welcome at Gingala Village and browse the markets, famous for their traditional Tami bowls and timber paddles. Enjoy water activities in pristine lagoons surrounded by the stunning coastline of the Finschhafen district.

MADANG

Discover Madang, the capital of Madang Province, named during the late German administration in the 1890s. Visit Bilbil village for traditional clay pot demonstrations and the Coast Watchers monument, then spend the afternoon diving, relaxing at the waterside Madang Resort, or browsing the town's vibrant markets.

SEPIK RIVER

Navigate Papua New Guinea's longest river, renowned as one of the world's most prolific art-producing regions. Visit Bien village to meet master carvers, enjoy traditional performances, and cruise by Xplorer to spot a diverse array of wildlife.

AT SEA

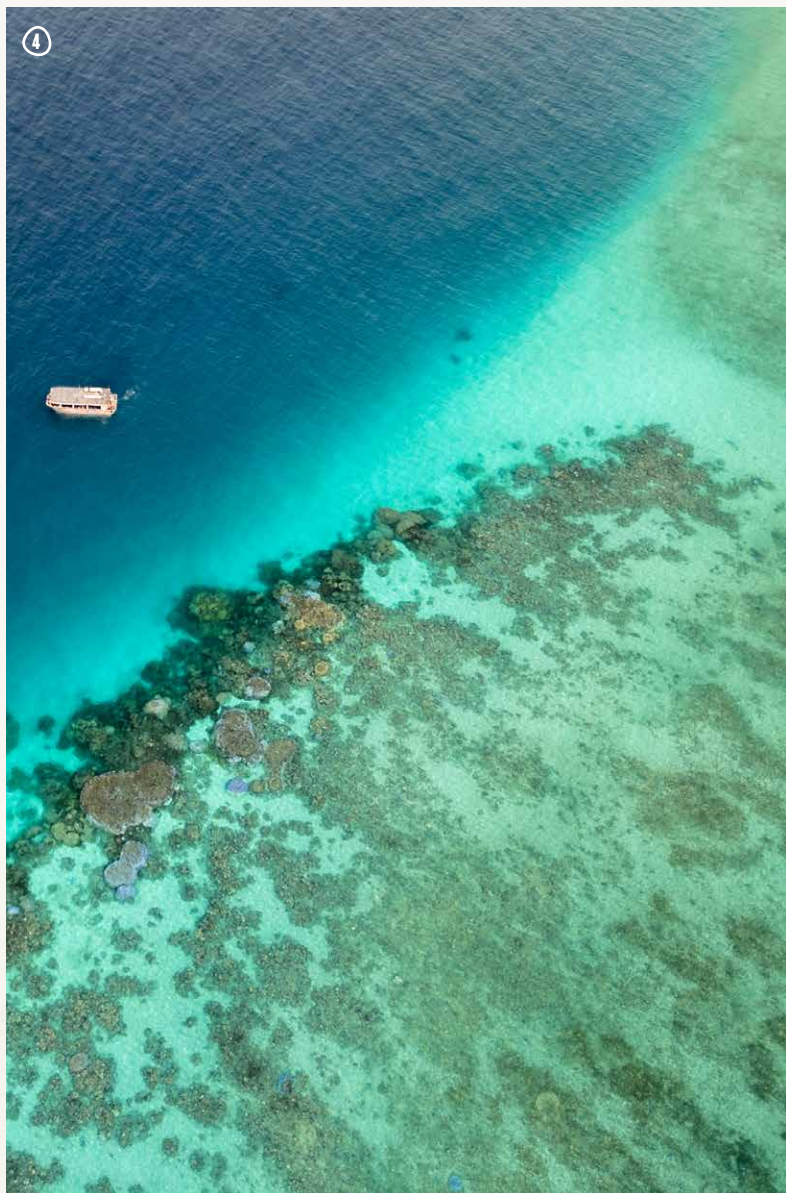
Sail towards New Britain while enjoying presentations about the remarkable coral reef systems ahead. Reflect on the incredible cultural connections you've made throughout Papua New Guinea's diverse frontier regions.

KIMBE BAY

Explore the 'coral crucible' with over 860 tropical fish species and 400 coral varieties. Join traditional sing-sings at the Catholic Mission before swimming, snorkelling and diving at the spectacular Witu Islands.

DAY 13: ARRIVE RABAU

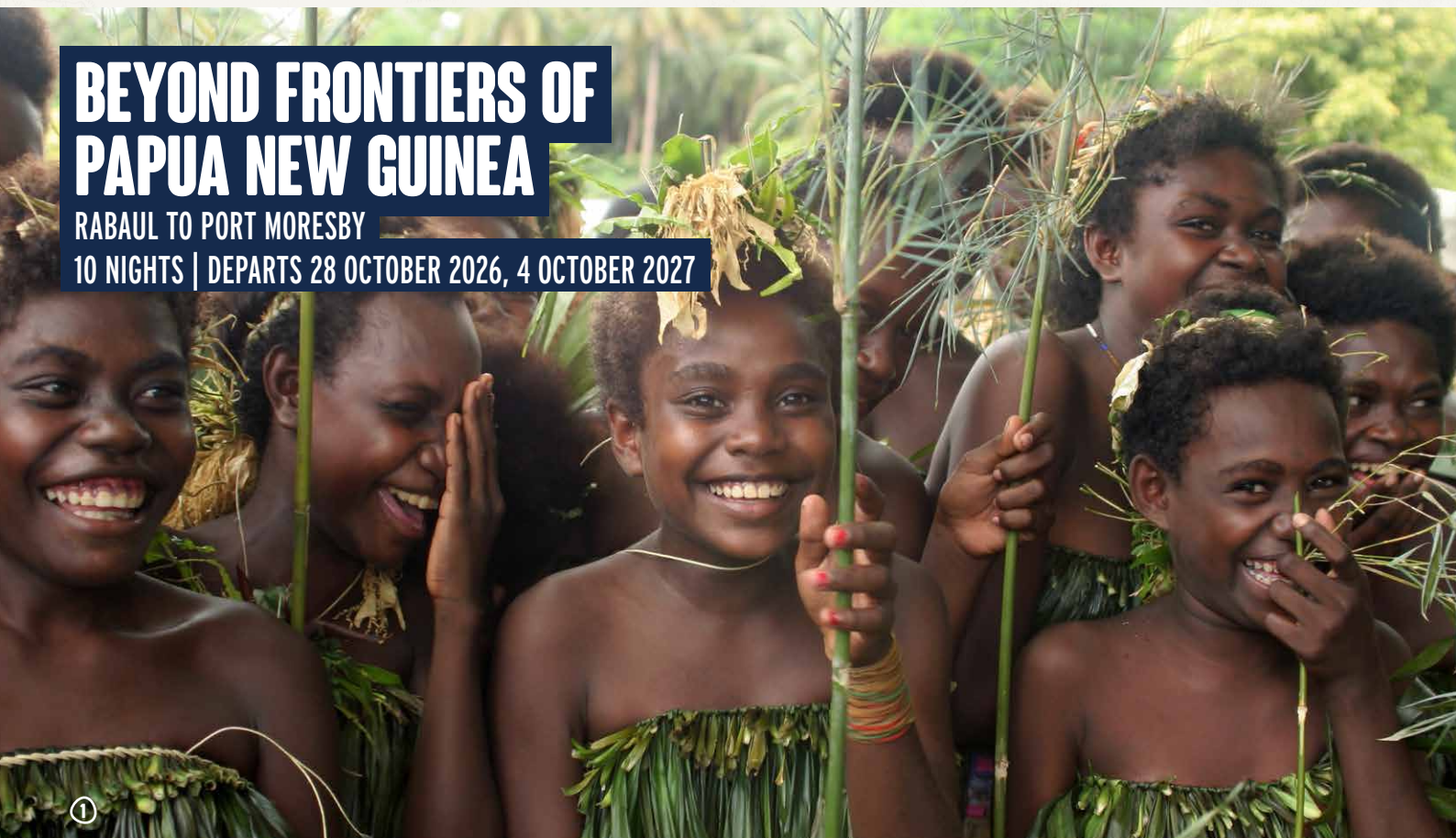
Disembark at 8:00am in this dramatic volcanic harbour town. For those wanting to explore more, consider adding on our Beyond Frontiers of Papua New Guinea voyage.



BEYOND FRONTIERS OF PAPUA NEW GUINEA

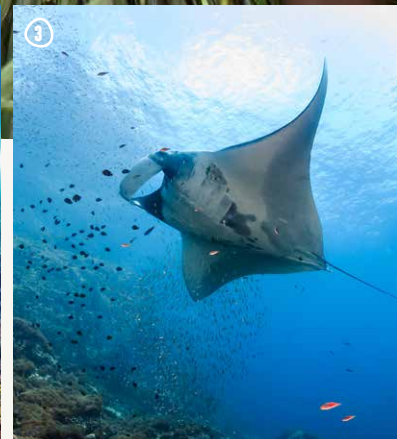
RABAU TO PORT MORESBY

10 NIGHTS | DEPARTS 28 OCTOBER 2026, 4 OCTOBER 2027



Expedition Highlights

- > Dive and snorkel remote beaches and atolls of the Solomon Sea and Milne Bay.
- > Delve into climate resilience programmes and World War II history on Nissan Island, Bougainville.
- > Enjoy a local seafood lunch with villagers and commemorate lives lost at the Tol massacre site.
- > Explore ancient traditions of the Kula Ring in remote island communities.
- > Scout temperate waters for elusive manta rays, green and hawksbill sea turtles.
- > Visit the newly erected Australian War Memorial sites honouring fallen soldiers.



Note: No Charter Flights included



ITINERARY: 10 NIGHTS > RABAU TO PORT MORESBY

DAY 1: DEPART RABAU

Board Coral Adventurer at 4:00pm in this bustling Papua New Guinea port town, where your remote island adventure begins. Join our expedition staff as they introduce you to the journey and the many experiences you will enjoy. This evening, join the Captain's welcome drinks and meet your crew and fellow guests as the sun sets.

NISSAN ISLAND (GREEN ISLAND)

Discover significant World War II history, alongside innovative climate resilience programs. Meet Andrew Buka, who facilitates community development projects, including solar power and water supply initiatives, addressing climate change impacts.

TOL, NEW BRITAIN ISLAND

Visit the memorial commemorating 160 Australian soldiers of the 2/22nd Battalion executed here in 1942. On return, enjoy a seafood lunch prepared by village women and explore Japanese caves or visit the local high school.

JACQUINOT BAY

Explore this tranquil bay with white sandy beaches and tropical palms. Visit the spectacular waterfall flowing from mountainside to beach, engage with villagers at the local carving market and cruise the Kalamalage River to a World War II flagpole.

GASMATA (LINDEN HARBOUR)

Honour fallen Australian soldiers at the newly erected 2025 memorial. Discover Dr. Andrew Forrest's connection to this location and experience cultural performances before exploring Japanese World War II wrecks and limestone karst formations—diving option available at Linden Reef, including Japanese plane wreck diving and Elsie's Reef for snorkelling.

LUSANCAY REEF

Enjoy pristine waters at this uninhabited reef perfect for swimming, diving and snorkelling. The crystal-clear waters showcase fantastic coral and marine biodiversity, making it an ideal location for beach refreshments in paradise.

NASIKWABU (ALCESTER) ISLAND

Immerse yourself in the ancient Kula ring traditions and the rich culture of Milne Bay. Experience traditional welcome ceremonies and cultural performances before enjoying water activities in these remote Kiriwina Islands.

ITAMARINA ISLAND

Visit the turtle sanctuary where conservation efforts protect nesting green and hawksbill turtles. Engage with local sea rangers working to support Papua New Guinea's blue economy through marine protection initiatives. Snorkelling and diving opportunities available.

GUNU BARA BARA ISLAND

Search for manta rays at their cleaning station on this island home to just 20 members of the Mailulu family. Discover blue economy opportunities while savouring local delicacies, such as sago fish patties.

BONA BONA ISLAND & DELIMA ISLAND

Experience village life and spot a diverse array of birdlife, including pied imperial pigeons and eclectus parrots. Learn about palm oil plantation impacts before moving to Delima Island for exceptional reef diving and snorkelling.

DAY 11: PORT MORESBY

Disembark at 8:30am in Papua New Guinea's capital, bidding farewell to new-found friends, the Captain and crew.



PASSAGE THROUGH THE MEALNESIAN ARC

PORT MORESBY TO PORT VILA

14 NIGHTS | DEPARTS 12 NOVEMBER 2026, 19 OCTOBER 2027



Expedition Highlights

- > Cruise the remote and spectacular Louisiade archipelago of Papua New Guinea.
- > Learn about local 'kastom' and kula ring trading during authentic village visits.
- > Partake in conservation efforts by helping release turtle hatchlings at the Arnarvon Islands.
- > Snorkel and dive in the world's most significant double barrier, enclosed reef saltwater lagoon at Marovo Lagoon.
- > See the iconic Rom dance at volcanic Ambrym, Vanuatu's black magic centre.
- > Delve into the ancient skills of Lakatoi artisans and their remarkable seafaring history.



Note: No Charter Flight from Port Vila



ITINERARY: 14 NIGHTS > PORT MORESBY TO PORT VILA

DAY 1: DEPART PORT MORESBY

Meet at the provided hotel (TBA) meeting room from 2:30pm for transfers to *Coral Adventurer*. Board at 4:00pm, where you will meet our expedition staff as they introduce you to the journey and the many experiences you will enjoy. This evening, join the Captain's welcome drinks and meet your crew and fellow guests as the sun sets.

AT SEA

Enjoy onboard presentations about Melanesian culture and the fascinating anthropological history of how Austronesian and Papuan peoples populated these islands through the centuries.

LOUISIADE ARCHIPELAGO

Swim over a nearly intact Japanese Zero fighter plane in Deboyne Lagoon and connect with villagers maintaining traditional subsistence lifestyles. In the afternoon, explore limestone karst caves and snorkel at spectacular Panasia Beach.

LAUGHLAN ATOLL

Witness the traditional canoe-building mastery in this remote archipelago. Meet the friendly villagers of Bodaluna and learn about their subsistence gardening, fishing and participation in the ancient Kula Ring trading network.

GHIZO & NJARI ISLAND

Enter the Solomons Islands with clearance via Kennedy Island, where former President John F Kennedy swam ashore during World War II. Snorkel the crystal-clear waters of uninhabited Njari Island, teeming with colourful corals and marine life.

KEREHIKAPA - ARNARVON ISLANDS

Participate in conservation efforts by helping to release turtle hatchlings from this important breeding sanctuary. Learn about loggerhead, green and hawksbill turtle protection in this 40,000-acre marine conservation area.

MAROVO LAGOON - UEPI ISLAND

Explore one of the world's largest double barrier enclosed lagoons, a natural wonder proposed for World Heritage listing. Meet expert carvers famous for intricate ebony pieces with rosewood and mother-of-pearl inlays.

MARAU SOUND

Experience the mesmerising Ētētung water dance performed by women in hand-woven costumes. This soothing sonic and visual performance creates hypnotic rhythms through water while singing traditional songs. Here, the Marau people depend on their natural environment, practicing subsistence farming and fishing.

SANTA ANA ISLAND

Discover this small island famous for elaborate bone fishhooks and imaginative fishing floats. Walk through forests filled with colourful orchids and learn about the Austrian anthropologist who studied this community in 1932.

AT SEA

Sail towards Vanuatu while enjoying presentations about the volcanic islands ahead and their unique cultural practices, including cargo cults and traditional dance ceremonies. Enjoy onboard program with lectures and cooking demonstration.

ESPIRITU SANTO - LUGANVILLE

As we enter Vanuatu, for divers, explore Million Dollar Point, where Americans sunk vehicles after World War II rather than sell them. Dive amongst wrecks turned into coral reefs, now home to diverse marine life and swim in the one of Malo Island's mysterious 'blue holes'.

AMBRYM ISLAND- FANLA

Witness the famous Rom dance performed in the shadow of active Benbow and Marum volcanoes. This traditional ceremony connects men to the spirit world on Vanuatu's 'black magic' island with its iconic black sand beaches.

NGUNA ISLAND

Snorkel or dive in the Ngunu-Pele Marine Protected Area amongst stunning coral gardens, sea grass beds and mangrove forests. An optional, challenging hike to extinct volcano craters Mount Tapuora and Mount Marow is recommended for the very fit.

TANNA ISLAND - WAISISI

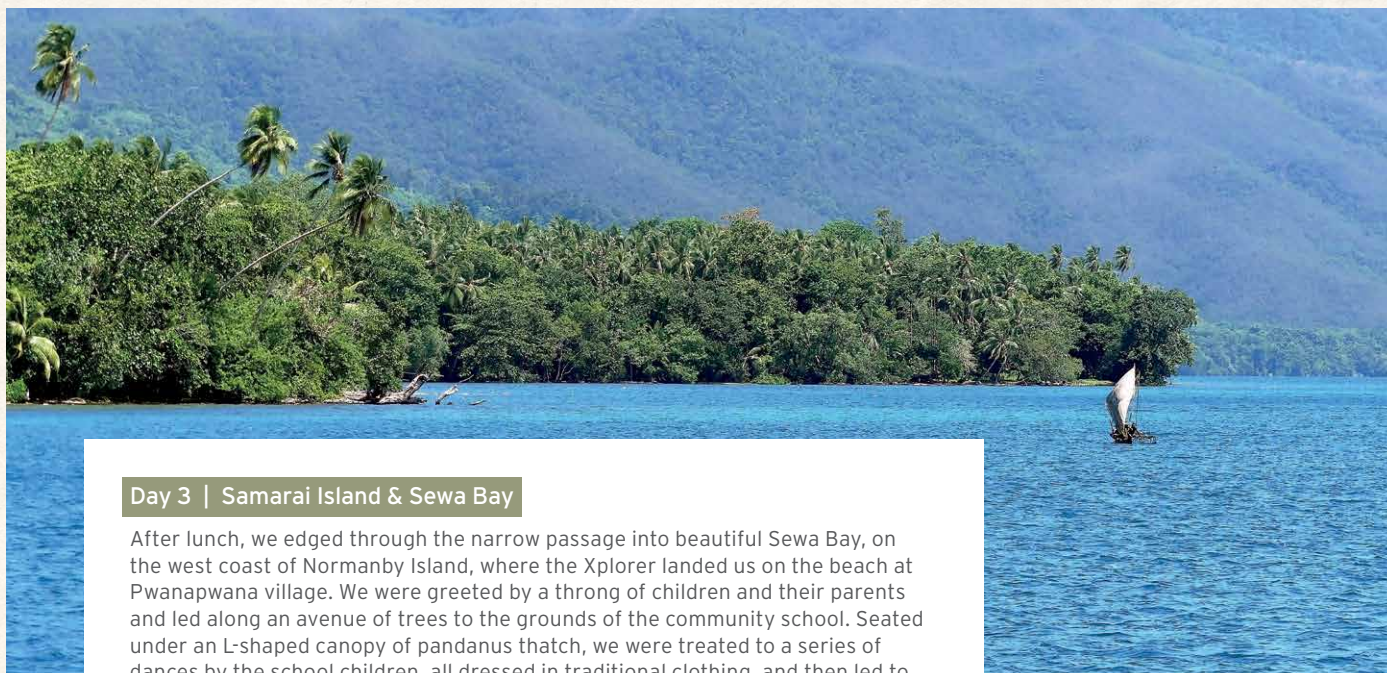
Take a 4WD trip to peer into active Mount Yasur volcano, whose glow attracted Captain Cook in 1774. Learn about the unique John Frum Cargo Cult and Tannese culture on this remarkably fertile island.

DAY 15: ARRIVE PORT VILA

Disembark at 7:00am in Vanuatu's capital. Reflect on the cultural connections you've made across Melanesia's sacred islands, carrying with you a deeper understanding of these remarkable Pacific communities.



Voyage	Frontier Lands of Papua New Guinea	Master	Jacopo Barchetti
Vessel	<i>Coral Adventurer</i>	Expedition Leader	Jamie Anderson
Depart	Cairns 30 October 2019	Guest Lecturer	Chris Ballard
Arrive	Madang 12 November 2019		



Day 3 | Samarai Island & Sewa Bay

After lunch, we edged through the narrow passage into beautiful Sewa Bay, on the west coast of Normanby Island, where the Xplorer landed us on the beach at Pwanapwana village. We were greeted by a throng of children and their parents and led along an avenue of trees to the grounds of the community school. Seated under an L-shaped canopy of pandanus thatch, we were treated to a series of dances by the school children, all dressed in traditional clothing, and then led to a series of different demonstrations of pandanus weaving, sago processing and local cooking. Many of the school teachers and children kindly guided us up the hill behind the school and into their homes, and then the entire community followed us down to the water's edge, where Bosun Bryan revved up the Xplorer's engines, showering the more adventurous kids with spray, to their absolute delight.

Day 4 | Dei Dei (Ferguson Island) & Dobu Island

We took up a position off the smaller conical volcanic island of Dobu, its ash slopes deeply scored by eroded valleys. With volcanoes to our right and left, and geysers and vents elsewhere we were now well within the Ring of Fire! We were also now in the area known as the Kula ring, a traditional network of exchange involving ancient shell and stone valuables in which Dobu Island played a central part. Senior chiefs in the hierarchical societies of these islands continue to participate in these competitive and prestige exchanges which see white armshells called mwali move in a more or less counter-clockwise direction between the D'Entrecasteaux and Trobriand Island groups, against a counter-current of bagi shell necklaces moving clockwise. Dobu is one of the most famous mission stations in PNG, with an old church bearing the name of the first missionary, William Bromilow, and where we were treated to delightful renditions of the national anthem by schoolchildren, followed by dances and a display of Kula valuables, strung out along a pole.





Day 5 | Kuiawa Island (Trobriand Islands)

At 0800 we headed ashore to magical Kuiawa on the Xplorer. Even within the Trobriand Islands, Kuiawa is relatively remote and removed from the main island of Kiriwina, and the local villagers were out in force to greet us. We were given an official welcome and then enjoyed several traditional Trobriand dances and songs performed by all age groups. The costumes, instruments and style of dancing were notably different to anything we had experienced so far. The Trobriands are expert carvers and their style is unique. Proud mothers and sisters would dash out from the crowd to hang shell necklaces over the dancers. As guests were shown through the village by enthusiastic guides there were small stalls along the way where we could purchase our own piece of the Trobriands and take home an expertly made carving or woven basket.

After lunch on board the ship, it was time to get in the water and enjoy some excellent snorkelling on the reef at the entrance to Kuiawa village. Other guests chose to return to shore and spend more time in the village.



Day 6 | Tufi Fjord & Natade Village

Traditional canoes expertly steered by children and led by a magnificent leader standing on a canoe platform to deliver his welcome, ferried us across to a welcome by black-painted warriors and girls throwing petals. On a grassy expanse in the pretty village of Natade, dancers performed for us, dressed in beaten barkcloth or tapa, decorated with ancient clan designs, and sporting elaborate headdresses topped with the plumes of Raggiana birds-of-paradise, cassowary and cockatoos. This was followed by a number of well-designed demonstrations of traditional practices, including the tattooing of women's faces, fire-making, the production and decoration of tapa, and the application of traditional medicines. A stunning range of local artefacts, including lengths of decorated tapa, shell necklaces and string bags, was available in a market that sprang up out of nowhere, and the dancers continued to beat their drums long after we had filed back to the landing and returned to the ship for lunch.

Day 7 | Buna & Sanananda

The Xplorer landed us, much like troops in the war, on the black sand beach of Buna, only we were greeted by a line of beautiful children wearing traditional costumes and placing flower garlands over our heads. We then enjoyed a powerful traditional dance by senior men beating hand drums and women holding sheets of tapa barkcloth over their heads.

From there some walked in groups along the long beach while others took the Xplorer to Buna government station, where we read a number of commemorative plaques put up in memory of fallen US and Australian soldiers. Passing an aircraft wing inserted vertically into the ground, we walked up a long straight road through Buna village, visiting the local medical aid post and a small community museum which had been opened just the day before, stocked with helmets, weapons and the other debris of war found in the surrounding fields.





INCLUSIONS

- › All excursions with our Expedition Team
- › Use of Xplorer, Zodiacs and Kayaks
- › Snorkelling equipment
- › Daily lectures and briefings with Guest Lecturers
- › All meals, chef-prepared on board
- › Captain's welcome and farewell events, and open bridge access
- › Selected wines, selected beers and house spirits, juices, and soft drinks served with lunch and dinner
- › 24-hour barista-style coffee and tea station
- › Wi-Fi access - standard speed connectivity enabling email, social image sharing, web browsing and messaging
- › All entrance fees to National Parks, ports, traditional owner fees and charges imposed by governing authorities
- › Tips and gratuities
- › Use of all onboard facilities, incl. a reference library
- › Your expedition photos captured during the voyage

CUISINE & WINE

On board you will discover a personal and relaxed atmosphere befitting our Australian heritage. We do not have formal nights, organised entertainment or designated seating. Instead, you will enjoy a convivial atmosphere shared by like-minded explorers, our experienced and friendly crew always at hand.

Enjoy freshly prepared meals from the open galley featuring local ingredients from the regions we visit. Relax in the spacious and open atmosphere of our indoor and outdoor bars and dining areas. Enjoy craft beers, artisanal spirits and wines sourced from Australia and New Zealand's finest terroirs at the end of a long day ashore.

WINE SELECTIONS

We offer two wine packages, which guests may purchase in addition to our house selection, which feature hand-selected Australian wines and French Champagne.

- › **A Taste of Australia Selection:** Six bottles featuring Australian wines - three reds, two whites and a rosé.
- › **Connoisseur Selection:** Six bottles featuring two whites, three reds and French Champagne.

IMAGES 1 Chefs at work | 2 Dinner served onboard Coral Adventurer
| 3 Sunset drinks on the Vista Deck

CORAL ADVENTURER

Passengers: 120 | Staterooms: 60
Length: 93.4m | Draught: 4.5m | Tonnage: 5,516

Our expedition vessel, *Coral Adventurer*, will be your home for this voyage. *Coral Adventurer* accommodates 110 guests in 60 spacious staterooms, with all Explorer Deck staterooms, Bridge Deck staterooms and suites offering private balconies.

With over 1000sqm of open deck space including a wrap-around promenade deck with panoramic views, *Coral Adventurer* features spacious and vibrant living spaces inspired by the company's Australian ethos and the wide-open spaces the ship visits. Multiple indoor and outdoor bars, including the Xplorer bar on the sundeck, a well-equipped gym and a passenger elevator creates an environment designed for guest comfort.

Coral Adventurer is purpose-built for comfortable ocean voyages and for exploring remote areas inaccessible to larger cruise ships. The ship's lightweight dual Xplorer expedition tenders extend the capabilities of the ship by allowing deeper exploration, on shore excursions and an easy, step-on embarkation from the ship's main deck. *Coral Adventurer* also features advanced technologies and environmentally-responsible design, including anchor-free technology and efficient water and waste recycling systems.

As an Australian flagged and crewed vessel, you can expect the highest standard of service, environmental responsibility and the intimate and personal experience of small-ship cruising on *Coral Adventurer*.

Features

- 2 Xplorer tenders, 6 Zodiacs • Navigator Lounge in Bridge • Single seat dining • Three cocktail bars • Well-equipped gym • elevator • Anchor-free technology

Stateroom Categories

Bridge Deck Balcony Suites	• 55.8sqm • Private Balcony
Bridge Deck Balcony Staterooms	• 21.4sqm • Private Balcony
Explorer Deck Balcony Staterooms	• 21.4sqm • Private Balcony
Promenade Deck Staterooms	• 17sqm • Picture Window
Coral Deck Staterooms	• 17sqm • Porthole Window





IMAGES 1 Purple queen fish, Fly Islands | 2 Preparing food, Boisa Island | 3 Lamotrek, Caroline Islands | 4 Dancer, Kofure Village

**SMALL SHIPS
FEWER THAN
120 GUESTS**

**PURPOSE-BUILT
SHIPS & UNIQUE
TENDERS**

**REMOTE
NATURE-BASED
EXPEDITIONS**

**WARM
AUSTRALIAN
HOSPITALITY**

**UNRIVALLED
LOCAL
EXPERTISE**



Contact us today or speak with your travel agent.

Online www.coralexpeditions.com
Email explore@coralexpeditions.com
Outside Australia +61 7 4040 9999

Head office PO Box 2093 Cairns 4870 QLD Australia
ABN 51 010 809 417



coralexpeditions
AUSTRALIA'S PIONEERING CRUISE LINE

Last Updated: August 19, 2025 12:42 PM