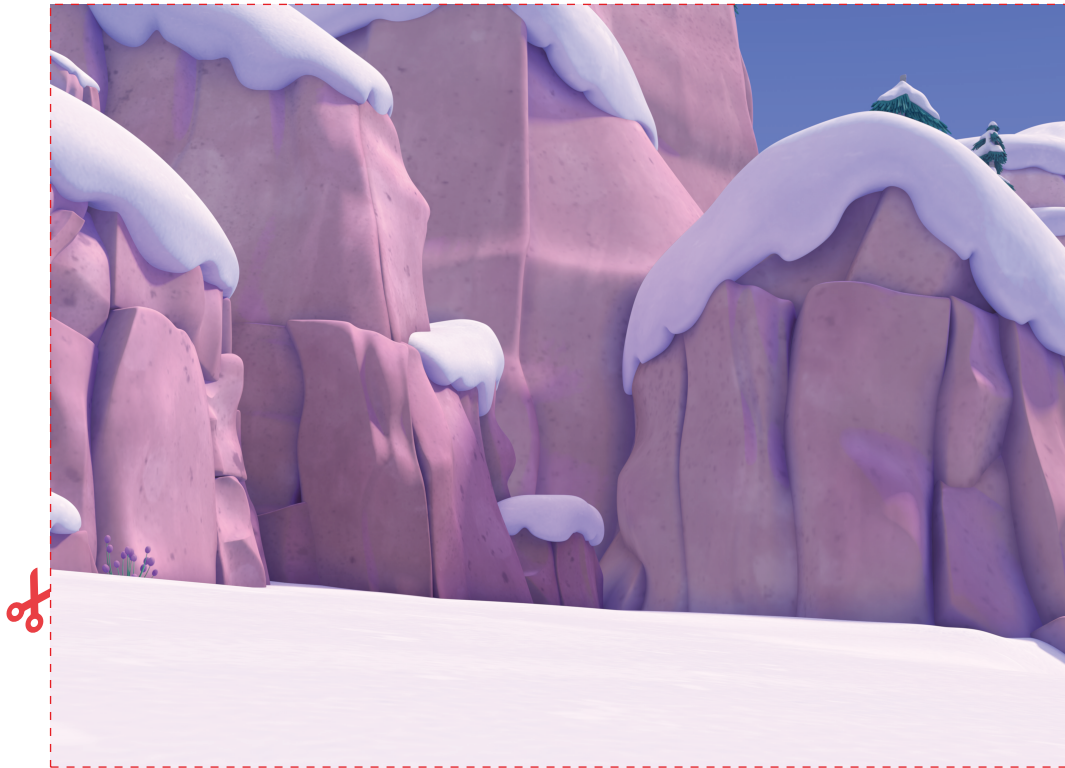


# DIY Tundra Snow Globe



Craft cutouts



Have an adult help  
you with this project



Fold here



Fold here







# Let's Make It!



Have an adult help you with this project

## DIY Tundra Snow Globe

### Gather your supplies!



- Jar with a lid
- The Creature Cases printable
- Scissors
- Packing tape
- Hot glue gun & glue stick
- Glitter
- Distilled water

#### OPTIONAL:

- Glycerin
- Waterproof materials & toys

### Eco tips!

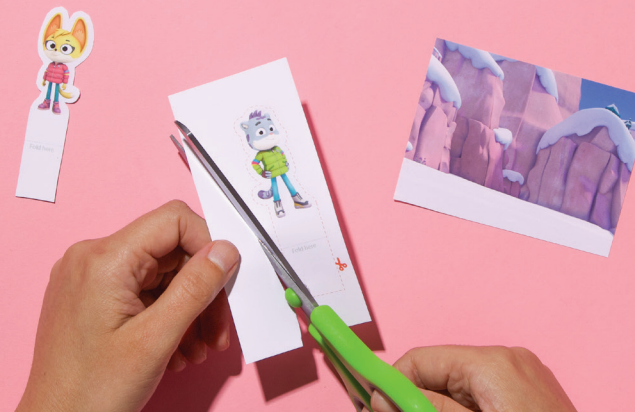
Reuse jars for all kinds of crafts



Get The Creature Cases printable here!



1



Follow the QR code to print and cut out The Creature Cases characters and wintry tundra background.

2



Completely cover your cutout Sam and Kit printables in clear packing tape, and smooth out any air bubbles. Trim the tape, leaving a border around each character.

3



Fold along the marked lines of the characters. Attach the characters and any decorations inside the jar lid using some hot glue on their bases. Let the glue fully dry.

4



Open the jar and sprinkle in some glitter. You can also add a few drops of glycerin to create a magical snowfall effect.

5



Fill the jar with distilled water, leaving some space at the top to prevent overflow. Carefully screw on the lid, making sure it's tightly sealed to prevent any leaks.

6



Tape The Creature Cases background to the outside of your new snow globe so it is facing in. You can decorate the outside of the snow globe with festive ribbons, stickers, markers, or paint. Let your creativity shine!

### Did You Know?

The tundra is a super cold type of biome. Biomes are parts of the world that have similar climates and living things. In the tundra, the temperature can drop to  $-40^{\circ}\text{F}$ !