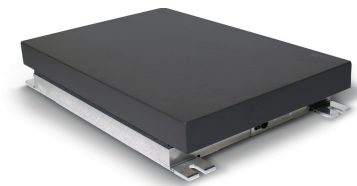


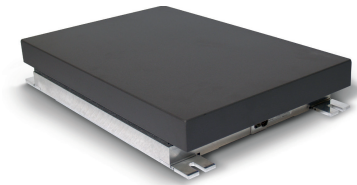
MOTIVE  
SYSTEM OPERATION, DATA CAPTURE AND MANAGEMENT

Intuitive, easy to use every day operation of the precision measurement system, with the details that matter most to clinicians and biomechanists alike. Real time workflows into Visual 3D, plug and play support for force plates, EMGs, and other digital and analog devices plus well documented workflows into Visual3D, MATLAB, and other third party biomechanics packages. **\$2,999**



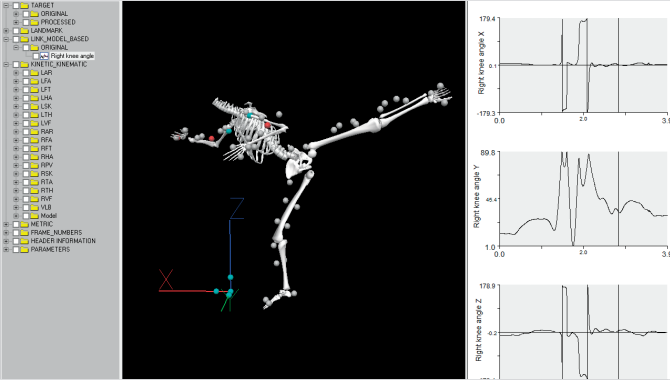
FP4060-10  
GAIT ANALYSIS

The ideal hybrid force plate (40 cm × 60 cm) with sensitive gait measurement capability and a high natural frequency. Available in standard load ranges of 5,000 N, 10,000 N, and 20,000 N.



FP4060-15  
SPORTS SCIENCE

A high impact force plate ideal (40 cm × 60 cm) for sports science studies. Available in standard load ranges of 5,000 N, 10,000 N, and 20,000 N.



VISUAL3D / MOTIONMONITOR / MATLAB  
MODELING, ANALYSIS & REPORTING

With complete integration with Visual3D, The MotionMonitor, MATLAB and others, OptiTrack's Movement Science toolset delivers a complete and easy to use pipeline for advanced biomechanics analysis and reporting.



FP4060-05-PT  
PORTABLE GAIT ANALYSIS

A portable, lightweight force plate (40 cm × 60 cm) designed to be used in the field for clinical and research gait analysis with a high natural frequency and load capacity of 5,000 N (1,000 lbs).



FP6090-PT  
PORTABLE SPORTS SCIENCE

A portable, high impact force plate ideal for sports sciences studies with a large foot print (60 cm × 90 cm) and a load capacity of 10,000 N (2,000 lbs).



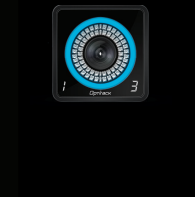
**PRIME 41**  
Combining 4.1 MP resolution with industry leading optics and image processing, the Prime 41 can measure movements <0.1 mm—ideal for the most demanding biomechanics and measurement applications. **\$5,999**

Resolution	4.1 MP
Frame Rate	180 FPS
FOV	51°
Volume	
Range	



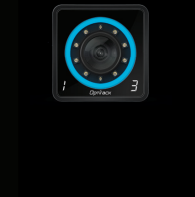
**PRIME 17W**  
Offering expansive coverage, great range, and 360 FPS capture rate, the Prime 17W is perfect for tracking fast motions throughout spaces of nearly any size. **\$3,499**

Resolution	1.7 MP
Frame Rate	360 FPS
FOV	70°
Volume	
Range	



**PRIME 13**  
Prime Series performance—including sub-mm 3D precision and high-speed 240 FPS capture—within a compact and affordable package. **\$1,999**

Resolution	1.3 MP
Frame Rate	240 FPS
FOV	56°
Volume	
Range	



**PRIME 13W**  
An ultra-wide angle variant optimized for gait labs and other applications requiring spacious volumes in very compact setup areas. **\$2,499**

Resolution	1.3 MP
Frame Rate	240 FPS
FOV	82°
Volume	
Range	



**FLEX 13**  
With 1.3 MP resolution at 120 FPS, the Flex 13 is the world's first megapixel mocap camera for under \$1k. Enjoy fantastic precision at a surprisingly affordable price. **\$999**

Resolution	1.3 MP
Frame Rate	120 FPS
FOV	56°
Volume	
Range	



**ESYNC 2** Prime Series Only  
Synchronize Prime Series cameras to almost any signal or source with the eSync 2, which offers a high speed signal to clock force plates and other DAQ devices. **\$1,999**



**NIDAQ**  
Integrate general analog devices—including triggers, EMGs, force places, accelerometers, and force transducers—via native support for USB NIDAQ devices.

1-888-965-0435 | www.optitrack.com

© 2017 NaturalPoint Inc. All rights reserved. NaturalPoint, OptiTrack, Motive, trademarked slogans and logos are the property of NaturalPoint. All other product names are trademarks or registered trademarks of their respective companies. Prices and specifications subject to change without notice. P-OT-3171803

OptiTrack®





# Why choose OptiTrack?

## INDUSTRY-LEADING ACCURACY

Delivering measurement accuracy of 0.2 mm for typical tracking studies, OptiTrack's blend of precision cameras and superior tracking software is second to none—even in very large volumes or outdoors. These levels of repeatable accuracy have validated its use for full-body kinematics and is at the heart of OptiTrack position as the world's largest motion tracking company—by any measure.

## EASY TO USE

OptiTrack systems have been engineered with the most innovative workflows available today. Features like the Prime camera's status indicator ring, the Aim Assist button on every camera, reference video from any mocap camera, plug and play force plate and EMG integration, and now, continuous calibration, make today's OptiTrack users the most efficient and versatile in the industry.

## EVERYTHING YOU NEED

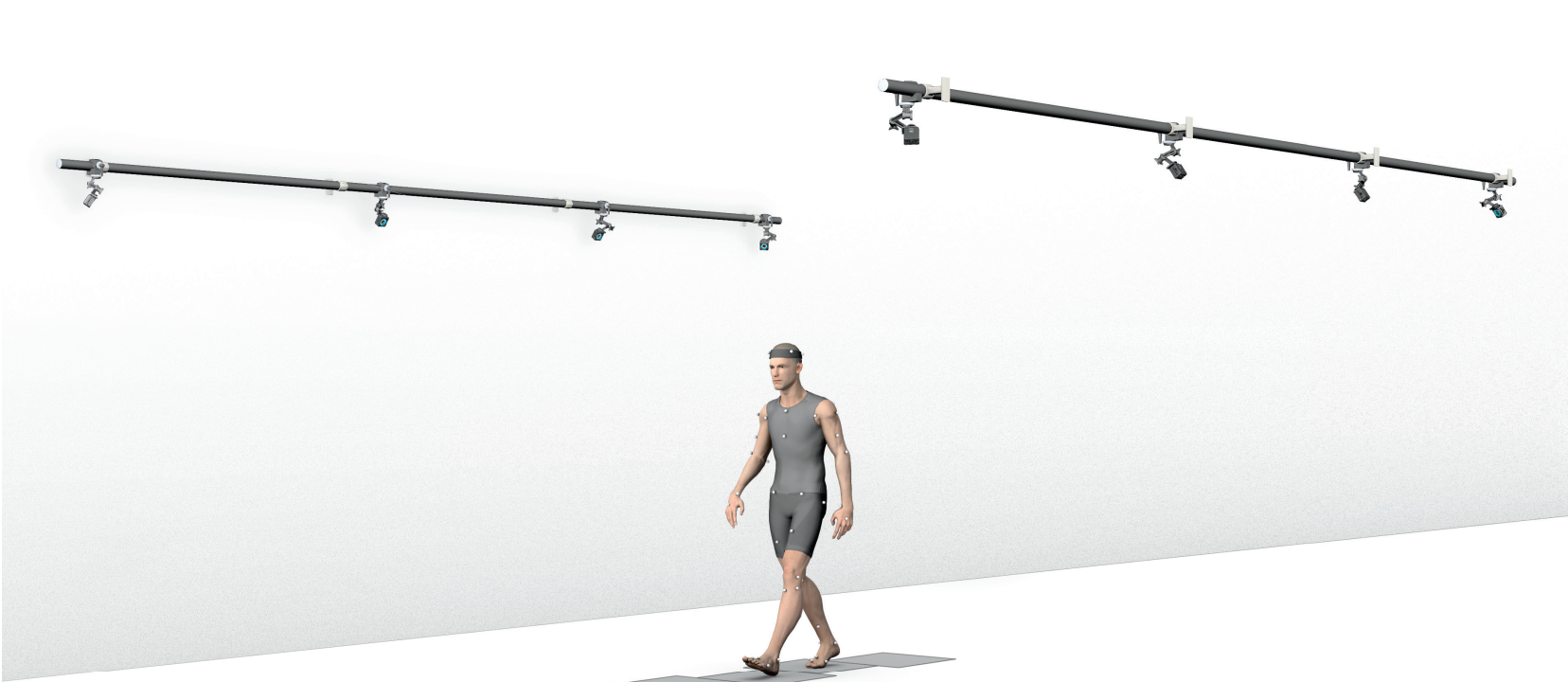
We've made motion capture for Movement Sciences exactly the way you wanted it: free, open SDK's available for download, a complete wiki with all the guides to make your tracking system sing, straight-up pricing and tech specs on the website, and the world's highest quality markers with a custom marker configurator. Build and purchase the perfect system for your application with a credit card and have it shipped within 2-3 days.

## VALIDATED BIOMECH MARKERSETS

OptiTrack supports numerous biomechanics marker sets, with a focus on the most complex and biomechanically-sound options—such as the IOR foot model—which has traditionally been difficult for motion capture systems to track.

## SURPRISINGLY AFFORDABLE PRICING

Accessible pricing is at the heart of our rise to becoming the world leader in optical tracking. You will not find engineering-grade motion capture technology priced more competitively than an OptiTrack system. If for any reason you are unsatisfied with your purchase, simply return it within 30 days and you'll receive a refund less a 10% restocking fee.



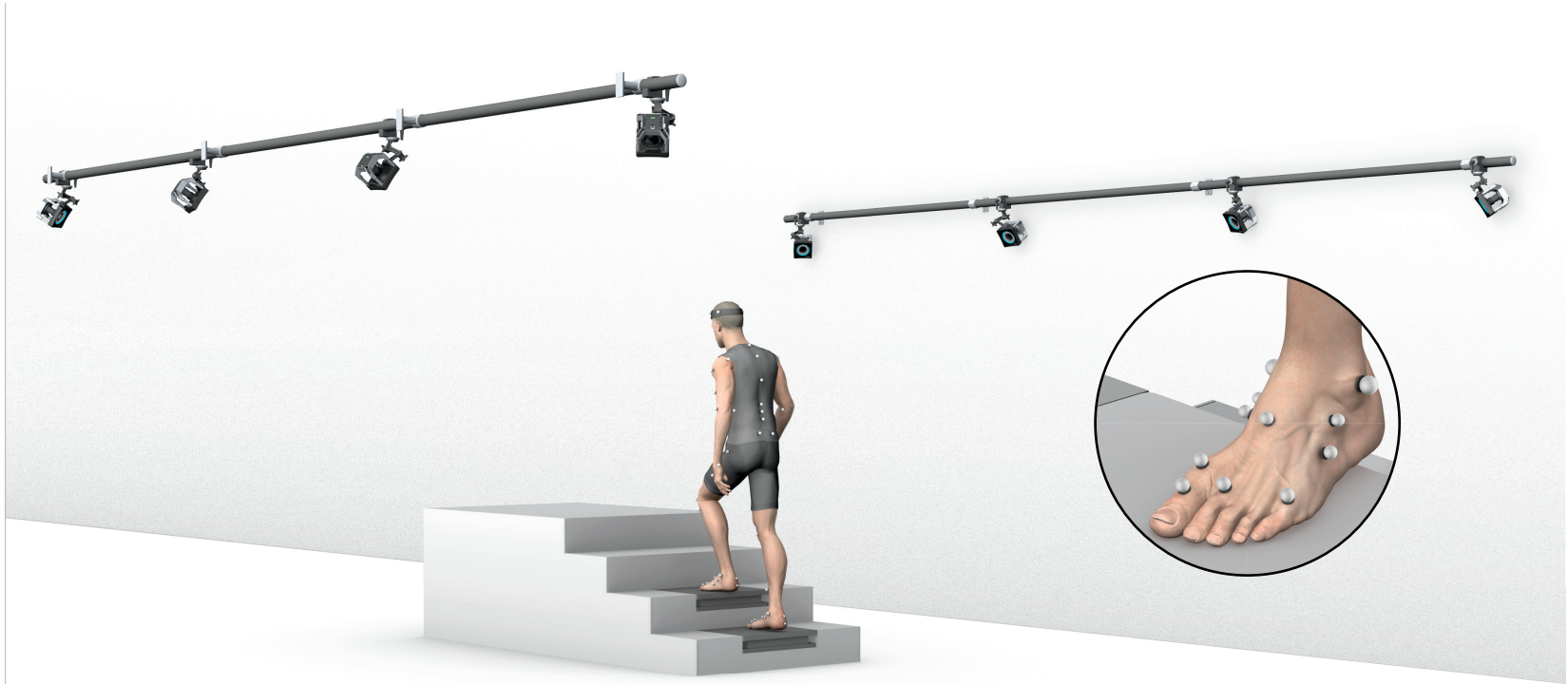
Gait Analysis

Low profile, super affordable tracking—ideal for compact spaces like gait labs and other clinical settings.



High Speed Tracking

High speed capture, excellent camera-to-marker range, and able to track outdoors in full sunlight.



High Precision Tracking

Track high-density markersets with <0.2 mm precision, for multi-segment models and exceptionally fine measurements.



Flex 13 Systems from **\$10k**



Prime 13 Systems from **\$18k**



Prime 13W Systems from **\$21k**



Prime 17W Systems from **\$34k**



Prime 41 Systems from **\$54k**