



For immediate release

October 2022

Women in Design

14+15 October 2022

Featuring:

Fluff Corp | Jessie French | Jane Bamford
Louise Wallis | Emily Taylor |
Genevieve Zoe Murray | Hilary Burden |
Lola Greeno

Design Tasmania Galleries

More info & tickets via designtasmania.com.au

Tickets:

Friday 14th	Dinner	\$110
Saturday 15th	Colloquium + Workshops	\$140

Design Tasmania's annual Colloquium, Women in Design, returns on the 14+15 October, where audiences will converge for an intimate event in Launceston for discussion and connection.

Devoted to supporting an all-female speaker list in the field of contemporary design, Women In Design's 5th iteration returns to the galleries after a COVID related hiatus. Women in Design was one of the first dedicated events to champion the pivotal role women play in growing and defining excellence within Australian culture, practice and creative thinking. The popular event has attracted professional and emerging participants from all over Australia since 2015.

Curated by Design Tasmania's own Michelle Boyde and moderated by Dr Helen Norrie, the program will deliver inspirational presentations and workshops to immerse audiences in design practice ranging from habitecture, ceramics for endangered species, cultural jewellery, native scent design, material proposals for a post-petrochemical future, as well as land and housing reform.

'I'm thrilled on behalf of Design Tasmania to be bringing together five local and four interstate inspirational Australian women working in design today, many of whom are utilising their considerable and varied design skills in purpose-driven, pioneering ways. Often working at the margins, without precedent or commercial gain, their projects are fuelled instead by a relentless desire to re-imagine the world a more care-centred, holistic and delightful place.'

Michelle Boyde

Launching with a ceremonious opening feast by Fluff Corp, audiences will be treated to an immersive dining experience combining ceramics and seasonally grown and wild-caught fare. When dinner is done, the ceramic installation will form part of a 4-week exhibition to remain open to the public in the Gary Cleveland Galleries.

Saturday's program will feature a very special workshop with Craft Australia Living Treasure Lola Greeno, a highly respected Tasmanian Indigenous shell worker, sculptor, installation and fibre artist who is sharing the knowledge of her traditional craft passed down from mother to daughter. In another Tasmanian showcase Hilary Burden of Undersong shares an aromatic story of Tasmania with her scent designs using wild, native Tasmanian plants.

Emily Taylor, from Core Collective Architects, will discuss her prototypes for rapid construction, energy efficient, permanent homes for women and children facing homelessness. An inspirational project she is working on collaboratively with the Hobart Women's Shelter, where 8 out of 10 women and 8 out of 10 accompanying children from across Tasmania, are currently turned away due to a lack of accommodation.

"Trauma-informed design has been integral to the way we have approached the brief from the Hobart Women's Shelter. Safety, security and connection to nature are all embedded in the design and are of heightened importance for women and children who have experienced trauma. The design balances the need for homes to be delivered quickly, seeking local products to avoid supply shortages and wait times for materials while ensuring that we're selecting durable materials and products that have a low energy requirement, reducing ongoing costs to the residents."

Emily Taylor

Extending the conversation around housing Genevieve Murray of Sydney's Future Method Studio seeks to reconfigure the possessive logics of property within her practice and projects.

Innovation and sustainability feature strongly, with many speakers addressing contemporary environmental challenges. Tasmanian ceramicist Jane Bamford, known for her pioneering practice, will share details of the functional forms she creates for the non-human world. Her ground breaking projects include installations to regenerate native oyster reefs in South Australia, Spotted Handfish spawning habitat in collaboration with CSIRO and nesting installations for little penguins. UTAS School of Architecture and Design lecturer Louise Wallis will share her ecological restoration project in The Midlands providing habitat for woodland birds, microbats and small biota, and Naarm/Melbourne based artist and designer Jessie French explores conscious consumption and speculative futures through her algae-based bioplastic and water-based ecologies. Recently exhibiting her work as part at the 23rd Sydney biennale, Jessie will share innovations into bioplastics through her workshop and talk, with her spectacular large scale works remaining on display for the month.

‘I’m thrilled on behalf of Design Tasmania to be bringing together five local and four interstate inspirational Australian women working in design today, many of whom are utilising their considerable and varied design skills in purpose-driven, pioneering ways. Often working at the margins, without precedent or commercial gain, their projects are fueled instead by a relentless desire to re-imagine the world a more care-centred, holistic and delightful place.’

- Michelle Boyde





Lola Greeno

Cultural Jewellery

Talk + Workshop | Saturday

Sharing her knowledge and customs of traditional shell necklace making, passed down from mother to daughter.

As a highly respected Tasmanian Indigenous shell worker, sculptor, installation and fibre artist, originally from Cape Barren Island but now living in Launceston Tasmania, Lola Greeno was awarded Craft Australia's Living Treasures Award for 2014.

With more than 30 years of traditional shell necklace making; the knowledge and customs that were passed down from mother to daughter; Lola is one of a handful of women shell stringers who have been responsible for ensuring the craft is passed on from their Elders and continued to the present day.

Although a traditional craft, Lola today works with the shell necklaces in a contemporary manner, sometimes incorporating them with woven fibre works or as parts of installations. Her work is not static or held in the past; it speaks of today's Tasmanian indigenous women.



Emily Taylor

Core Collective Architects

Talk | Saturday 15

Designing innovative homes for women and children facing homelessness.

Emily is an Associate at Core Collective Architects, a small and nimble practice based in nipaluna/Hobart, with a focus on environmentally responsible housing and community buildings. In 2020 Emily became acutely aware of the growing housing crisis and set out to learn more. Her enquiries led her to the Hobart Women's Shelter, who are having to turn away 8 out of 10 women and 8 out of 10 accompanying children from across Tasmania, due to a lack of accommodation.

Emily is working with the Hobart Women's Shelter to design a prototype of rapid construction, energy efficient, permanent homes for women and children facing homelessness. The design embraces trauma-informed principles which will ensure that the homes are dignified, safe, healthy, and healing. The project is quickly garnering support from all facets of Tasmanian government, philanthropists and the design and construction industry. The first two homes are due for construction early 2023.

Emily will share her journey on the Hobart Women's Shelter housing project, and her learnings from a process that has been humbling, highly collaborative and, ultimately, hopeful.



Fluff Corp.

Claire Lehmann + Jia Jia Chen

Serves | Friday 14

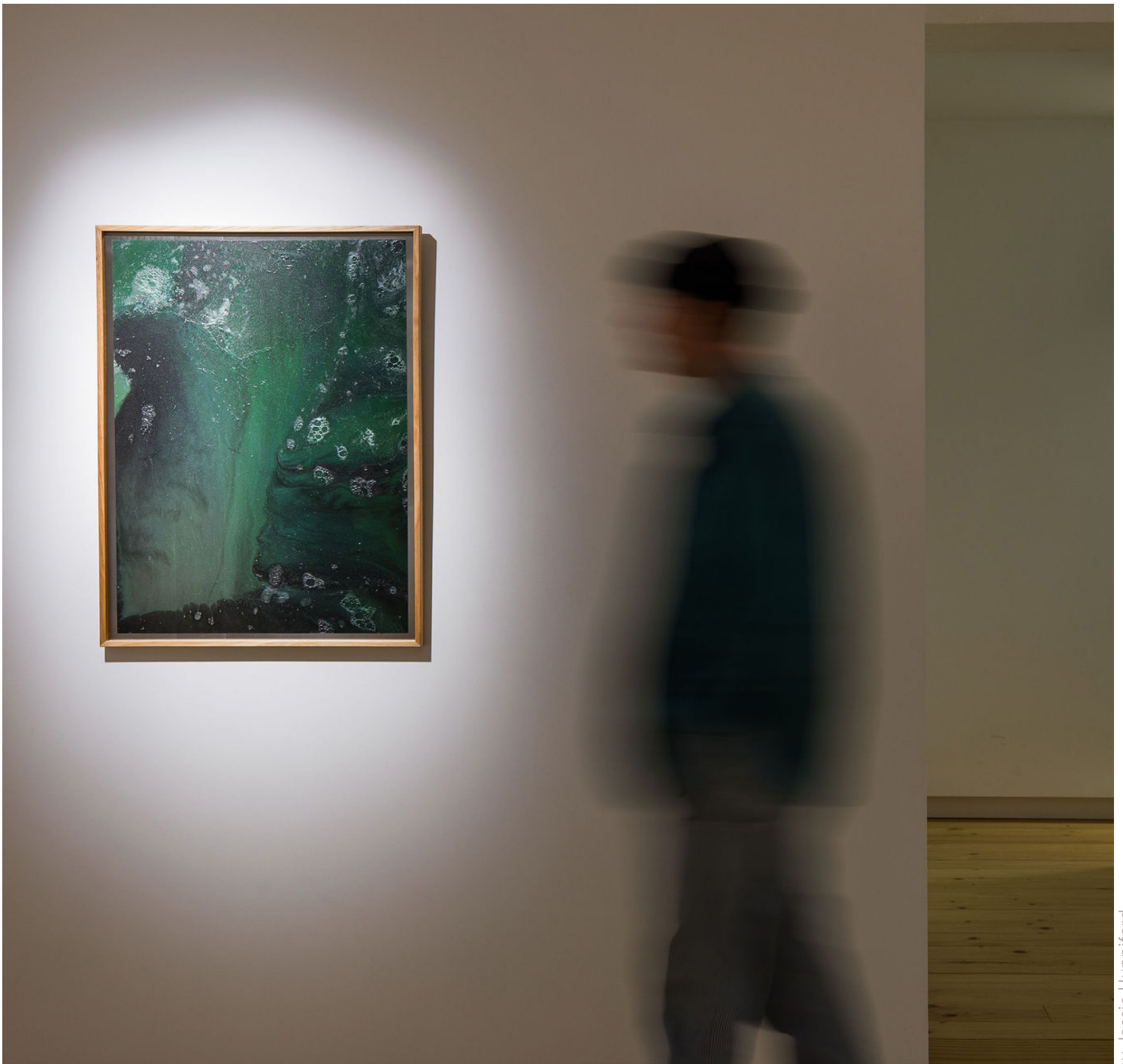
Hosting an experiential meal of wild-caught, leaf-wrapped, clay-baked food, when the food ends, the installation will remain.

Fluff Corp is the creative partnership of ceramic artists Claire Lehmann and Jia Jia Chen. Using the material's history to inform their ceramic activities, they aim to promote the connective and social potential of the medium whilst exploring its intimacy and ubiquity in daily life and its relationship to food and design culture.

Alongside immersive catering events and an object based practice, Fluff Corp has curated exhibitions for Melbourne Design Week, including an exhibition and series of clay baked dinners 'But First We Eat' in 2019 and 'The Talking Ornament' in 2021, an exhibition which investigated how objects speak and the role of public space and monuments in urban life.

Fluff Corp. continues to look at new ways of engaging with ceramic materials and the public.

Image credit: Fluff Corp. But First We Eat, photo by Kitty Wursthorn.

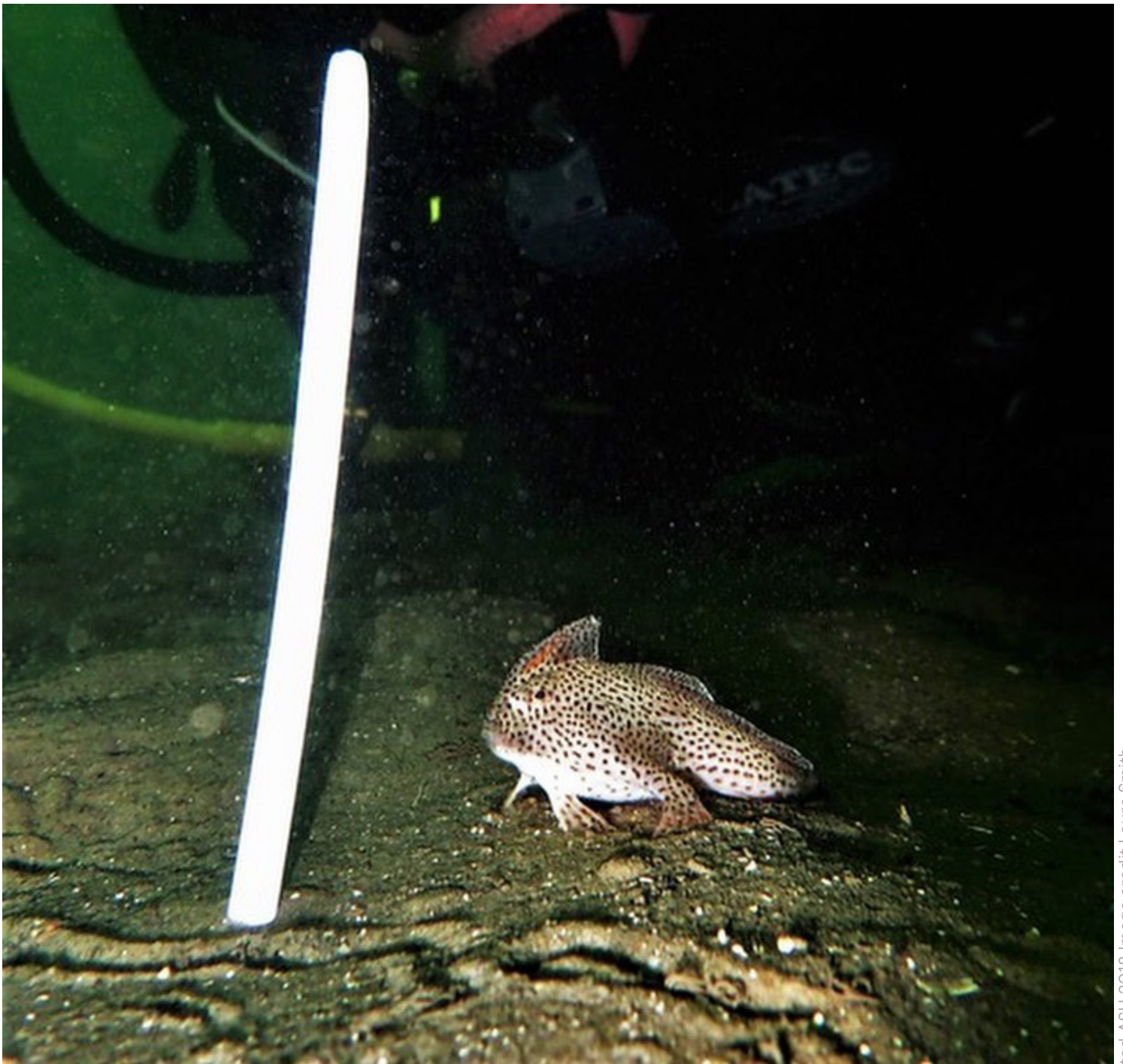


Jessie French

Workshop + Talk | Saturday 15

Consider a post-petrochemical world through algae-based bioplastic and water-based ecologies.

Based in Naarm/Melbourne, Australia, the work of Jessie French explores speculative futures through algae-based bioplastic and water-based ecologies. Housed within an ethos of consumption, sustainability and regeneration, her practice invites others to engage with the possibilities of a post-petrochemical world. Through experimenting with other materials, she explores the potential of closed-loop systems of (re)use and conscious consumption and interaction with objects. In 2020, French founded OTHER MATTER, an experimental design studio working with algae-based bioplastics which engages others in the possibilities of new materials through objects, experiences and futures. Emily will share her journey on the Hobart Women's Shelter housing project, and her learnings from a process that has been humbling, highly collaborative and, ultimately, hopeful.



Jane Bamford

Ceramicist

Talk | Saturday 15

A pioneering practice creating functional forms for the non-human world.

Bamford began studying ceramics in Japan at To En Kai studio in 1993. She subsequently completed a BFA, majoring in Ceramics at the Tasmanian College of the Arts, Hobart and was awarded the Deans' roll of excellence in 1995. Bamford was selected as an Associate at the Jam Factory Craft and Design Centre in Adelaide in 1997 and has since exhibited throughout Australia and internationally.

Bamford creates work over a range of ceramic processes including slab formed, hand built, slip cast and weaving. Her work is primarily informed from research and observation of the coastal, marine, and alpine landscapes of Tasmania. Her observation, connection to place and environmental awareness has led her to produce work on issues like climate change's impact on Tasmanian marine environments and the creation of Spotted Handfish spawning habitat in collaboration with CSIRO.

Bamford has actively pursued art/science collaborative projects, including collaborating with little penguin ecologists in both Tasmania and South Australia and has developed links to philanthropy in species support. She is currently an artist in residence at the University of Tasmania Centre for the Arts and Media creating ceramic work to be deployed in marine installations as part of a collaborative project to regenerate a series of native oyster reefs in South Australia.

Jane has become known for pioneering an arts practice around creating functional forms in species support which embody creative problem solving, functionality and compassion for the non-human world.



Louise Wallis

UTAS Learning-by-Making Studio

Talk | Saturday 15

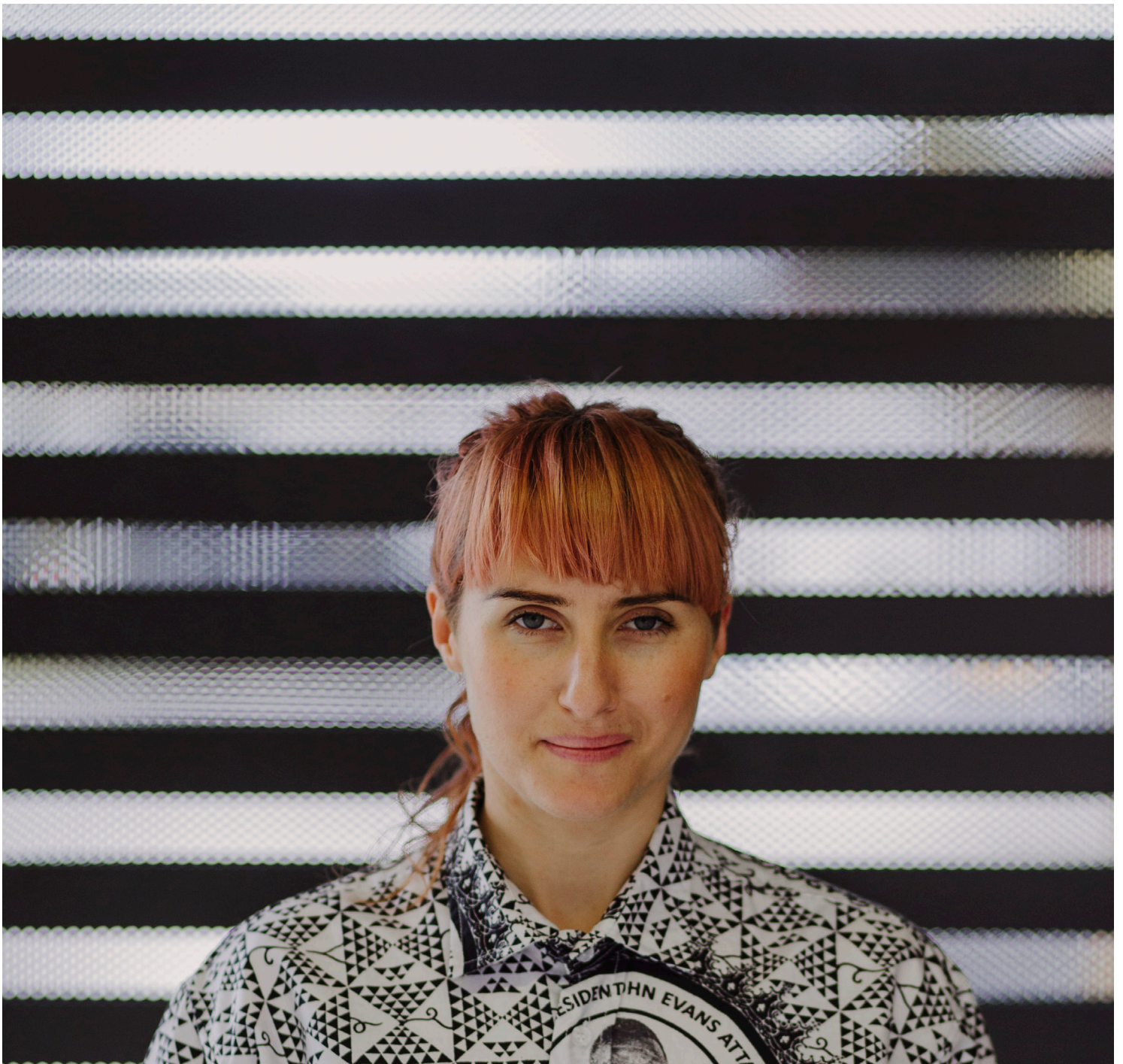
Ecological restoration in The Midlands through sculptural habitat or habitecture.

Dr Louise Wallis has over twenty years' experience at the School of Architecture and Design at the University of Tasmania. The catalyst to move to Tasmania, was the opportunity to research the educational benefits of Learning-by-Making (LBM) studios (2000). LBM provides an opportunity for design ideas to emerge from modelling and making with materials and testing the structure in a Bauhaus manner. In addition, design ideas are also informed by working through collaborative design processes with non-profit organisations, typically resulting in a unique small object or pavilion.

Louise's current LBM studio, Species Hotels, draws the community and tourists' attention to a significant ecological restoration project in The Midlands through sculptural habitat or habitecture. The Midlands is typically known for sheep and pastures with a few dead trees, then it being the only biodiversity hotspot in Tasmania recognised nationally. The sculptures include habitat for woodland birds, microbats and small biota, made from salvaged timber, simple fastenings and a lot of joy. Over 500 participants have worked together since 2016 on this project, including research scientists, artists, Greening Australia, educators, school children and first year university students.

This LBM studio is also reflective of Louise's research areas in design studio pedagogy across Australasia as well as the use and development of timber products in architecture and the industry.

Image credit: Species Hotels, courtesy of Louise Wallis.



Genevieve Zoe Murray

Future Method Studio

Talk | Saturday 15

Pushing the line between the practical and the abstract in architecture, installation and collaborative projects.

Co-Directed with Wiradjuri man Joel Sherwood-Spring, Future Method, a research and design studio, actively pushes the line between the practical and the abstract, seeking to extend and enrich the field of anti-disciplinarity and collective culture and push them into the public domain.

We have long been concerned with the ambient or latent conditions that pre-determine practice. Country is emerging in planning and architectural discourse as something we must embed, listen to, and respond to in the way we design and plan, but, Aboriginal people, the custodians of Country and the knowledge that keeps it cared for, are impacted continually and disproportionately by these processes. Future Method presents two projects that seek to reconfigure the possessive logics of property to help us imagine alternate futures.

Image credit: courtesy of Genevieve Zoe Murray



Hilary Burden

Talk + Showcase | Saturday 15

Scents that use wild, native Tasmanian plants, inspired by *Walking on Country*.

British/Tasmanian writer, editor, and broadcaster Hilary Burden worked in Sydney and London for leading publications, including *Vogue*, *Cosmopolitan*, *BEME.com*, *New Woman*, *The Sunday Times (Style)* and *The Guardian*. She has a Diploma in Gender, Society & Culture from the University of London, and a BA in English and Politics from the University of Tasmania.

In 2004, Hilary returned to northeast Tasmania to live on a farmstead, pursuing a passion for nature, food and gardens. Her best-selling Tasmanian memoir *A Story of Seven Summers* was published in 2012 by Allen & Unwin. She has worked regularly as a broadcaster for ABC Radio; as columnist for *Country Style* magazine and the *Mercury's TasWeekend*; and, as a contributor to *Gardens Illustrated UK*. Her Tasmanian stories and poetry are published by *Forty South*. In 2021 she was a judge for the Tasmanian Writers' Prize. Hilary has appeared on stage in conversation with Nigella Lawson (twice), Yotam Ottolenghi, Stephanie Alexander and Annabel Crabb. In 2019, she completed *Undersong* – the manuscript – as inaugural artist/writer in residence at Glover House, Deddington in 2019.

After graduating from a perfume masterclass in London in 2019, and inspired by subsequent visits to Grasse, France, *Undersong* – an aromatic story of Tasmania – was founded in Swansea, 2021.



Image credit: Jessie French, Some Silken Moment, photo by Jessie Hunniford

“Trauma-informed design has been integral to the way we have approached the brief from the Hobart Women’s Shelter. Safety, security and connection to nature are all embedded in the design and are of heightened importance for women and children who have experienced trauma. The design balances the need for homes to be delivered quickly, seeking local products to avoid supply shortages and wait times for materials while ensuring that we’re selecting durable materials and products that have a low energy requirement, reducing ongoing costs to the residents.”

- Emily Taylor



Corner of Brisbane and Tamar Street
PO Box 1845 Launceston
Tasmania 7250

+61 3 6331 5505
info@designtasmania.com.au

designtasmania.com.au
@designtasmania

Media Contact:

design@designtasmania.com.au



Design Tasmania

Design Tasmania acknowledges the palawa people as the traditional owners of this island - lutruwita. We recognise and respect the deep history and culture of the Tasmanian Aboriginal community; on whose unceded lands we work, gather and engage in this meeting place for design and creativity. We pay respects to Elders, past and present.