

Conservation Impact Report



S I T K A

First Edition

Contents

Philosophy
Mission
Conservation Advisory Board
Notes from Our Community
Grant Priorities
Conservation Impact

Grant Projects
Ecosystem Grants Stories
SITKA Studio





Conservation is Our Core

We define ourselves by the lasting benefit we bring to the natural world and believe that humans are an integral part of the ecosystem. The decisions we make have upstream and downstream effects. Much like how we design our gear systems, we think in terms of interconnected relationships and create innovative products that enable reconnection to the environment. We endeavor to continually improve the life experience of the hunter and create gear for people who seek - whether proactive or unbeknownst - a deep connection to nature in its rawest form.

A mature bull elk is part of a much larger story. His existence reflects an intricate food web supported by everything from soil and water to songbirds and predators. SITKA's conservation work funds projects that improve the state and function of ecosystems, protect wildlife and their habitats, and safeguard the future of outdoor access and hunting opportunity. We believe we have a responsibility to steward the wildlife and habitats that feed us, and run an annual grant program and partner with national conservation organizations to fulfill this mission. This is ecosystem thinking.



OUR
MISSION

Science & Stewardship to Fuel Natural Systems

SITKA Ecosystem Grants fund projects that improve the state and function of an ecosystem, allow for the growth of the hunting experience through access and education, and create opportunities for collaborative conservation.



Conservation Advisory Board

We are grateful for the support and dedication of SITKA's Conservation Staff and Advisory Board. Each individual represents unique and critical aspects of the conservation landscape today.



Rue Mapp
Founder and CEO of Outdoor Afro, author, speaker, waterfowler and public lands champion



Randy Newberg
Hunter, conservationist, media producer and advocate for America's public lands.



Gaspar Perricone
Political strategist, founder of the Bull Moose Sportsmen's Alliance, bowhunter, rancher and fourth-generation Coloradan



Lindsey B Davis
Director of Conservation and Advocacy, bowhunter, naturalist and ecosystem steward



Mark Healey
Professional big wave surfer, entrepreneur, bowhunter, spearfisherman, and ocean advocate



Dr. Karl Miller
Research scientist and professor of deer management, Warnell School of Forestry



Whit Fosburgh
Lifelong conservationist, policy expert, hunter and angler



Notes from our Community

"Wildlife doesn't pay their own way. It's a quote often referenced in the conservation community. Organizations like the Wild Sheep Society of British Columbia (WSSBC) rely on membership, volunteers and key partners to execute on research, habitat and public engagement dedicated towards the enhancement and protection of wild sheep.

Quite literally, nonprofits like WSSBC put dollars back on the mountain for sheep. However, without financially committed corporate partners like SITKA to fund these often costly projects, the direct impact and benefit to wild sheep would simply not be possible.

As a keystone species, sheep are sensitive to human disturbance, habitat degradation and climate change. Sheep require a wild, undisturbed landscape and often signal the overall health of the habitat. The protection of wild sheep and their habitat typically results in the protection of an entire ecosystem. "

- Adam Foss, SITKA Ambassador, WSSBC Monarch Member

"SITKA's grant program is the gold standard for the hunting industry. From supporting on-the-ground research and habitat projects to understanding that conservation is a long-term and multi-faceted goal, I have been continually impressed by their willingness to work with organizations and volunteers. If there was a nose to tail granting system – SITKA's is it. I look forward to seeing what work and storytelling comes from them in the coming years."

- Jess Johnson – Government Affairs Director, Wyoming Wildlife Federation

"I'm a SITKA supporter for life because of how I've seen the company give back to so many deserving groups like Montana Wilderness School through the years!"

- Gar Duke, Co-founder of the Montana Wilderness School

"I have spent the last decade helping companies and organizations craft narratives that connect them to their customer's values and seek to make a positive impact on issues that matter. The content of SITKA's grant program is best in class for telling stories that connect the humanity of hunters in our communities, the value of conservation, and the impact that is possible when we combine our passion with a sense of purpose."

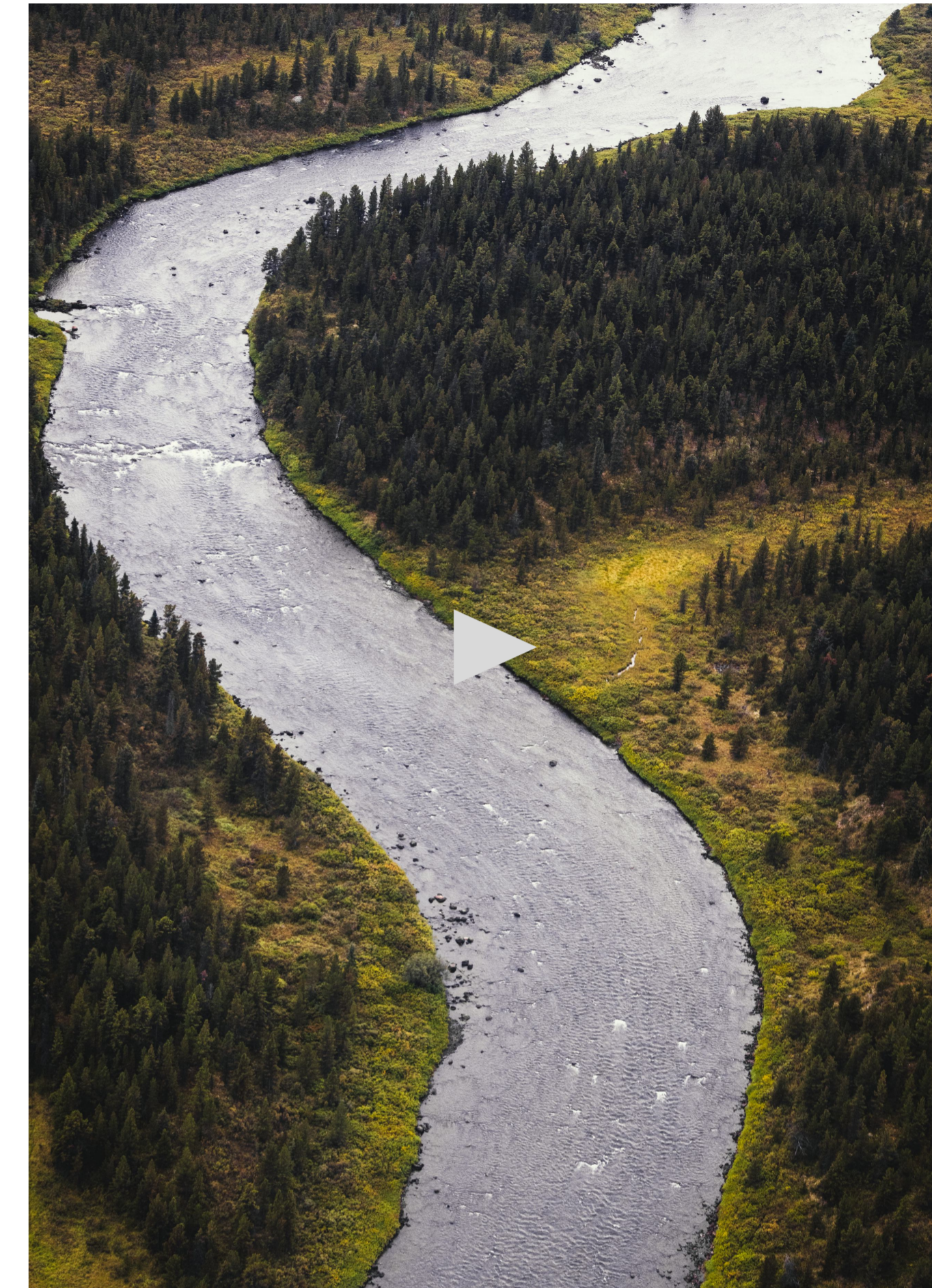
- Mario Molina, Founder, The Temis Group former Executive Director at Protect Our Winters



Our Grant Priorities



The SITKA Ecosystem Grants Program



We believe humans are an integral part of nature and that extraordinary impacts can be made not only by large organizations but also by grassroots efforts led by passionate individuals. SITKA Ecosystem Grants fund projects that improve the state and function of an ecosystem, allow for the growth of the hunting experience through access and education, and create opportunities for collaborative conservation.



1. NURTURING NATURAL SYSTEMS

- Habitat Restoration
- Biodiversity
- Conservation
- Working Landscapes



1. NURTURING NATURAL SYSTEMS

2. ENCOURAGING THE HUNTING EXPERIENCE

- Mentorship
- Access

- Education
- Well-being



1. NURTURING
NATURAL SYSTEMS

2. ENCOURAGING THE
HUNTING EXPERIENCE

3. SHARED
STEWARDSHIP

**Prioritizing whole
ecosystems through collaboration**



Conservation Impact



10 National Conservation Organizations Sponsored

21 Grants Awarded

100+ Organizations supported through donations





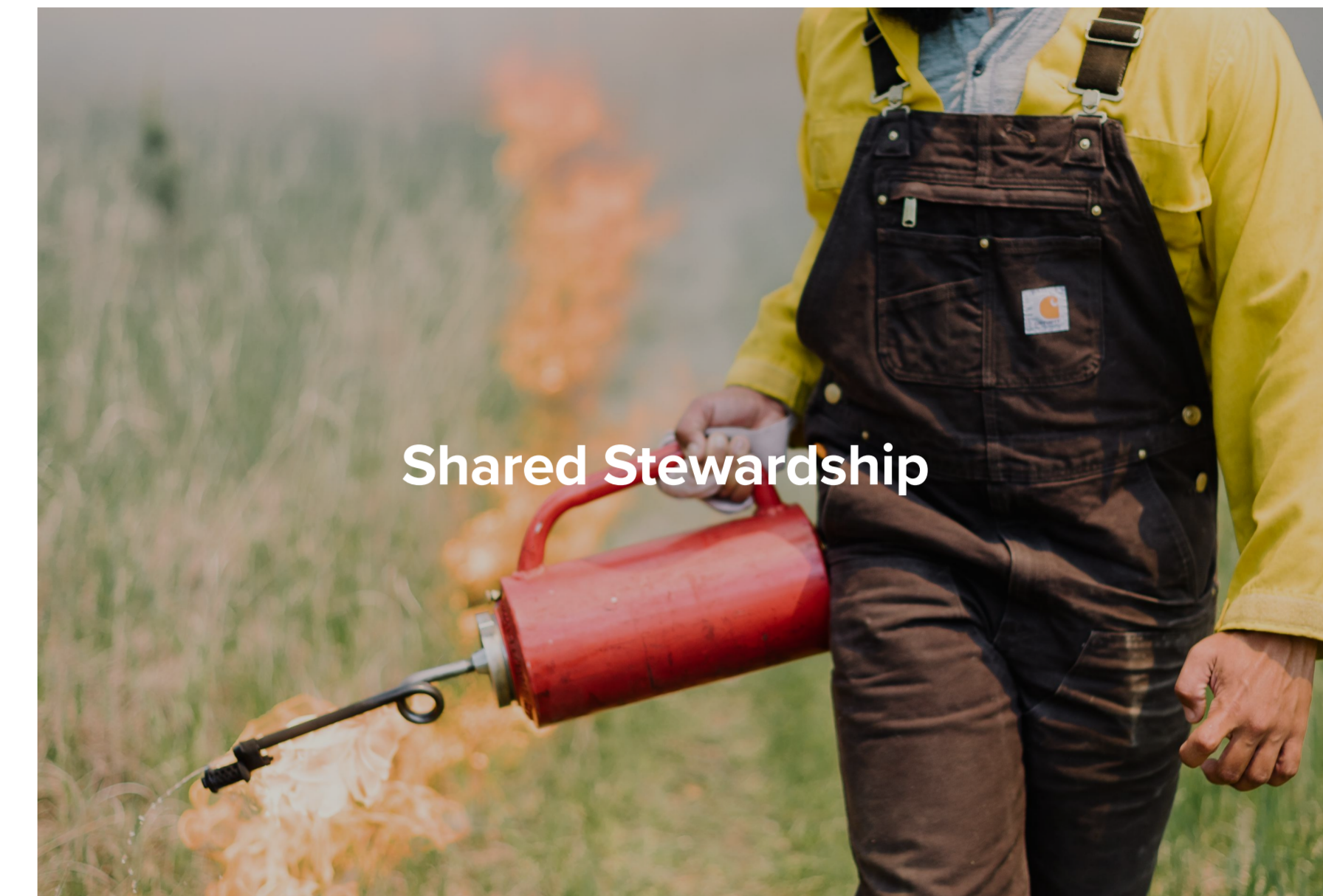
Nurturing Natural Systems

- Repairing riparian ecosystems in the Great Plains of the United States
- Advancing the pathogen surveillance and management of diseases affecting Wild Sheep
- Mapping the migration routes of Mule Deer
- Restoring a wetland in the Columbia Basin Wildlife Area
- Managing the spread of Chronic Wasting Disease
- Growing waterfowl populations through egg salvage and recovery



Encouraging The Hunting Experience

- Starting archery programs in 20 schools across the country
- Supporting the mentorship and education of over 1,000 new hunters
- Providing scholarships for 10 students' graduate studies in Waterfowl Habitat and Recreation Management
- Developing a spearfishing safety awareness and sustainability course
- Scholarships for youth to participate in backpacking and aspiring hunter skills courses



Shared Stewardship

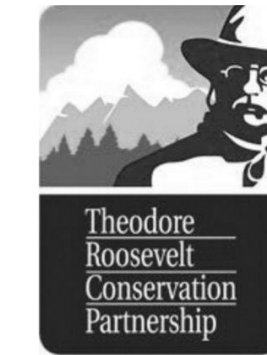
- Permanently designating a wildlife corridor for the Wyoming Range Mule Deer
- Performing the first ever wildlife surveys on the land emerging as Lake Powell recedes
- Scaling wildlife friendly fence projects in the Greater Yellowstone Ecosystem
- Developing an educational course to protect the future of Mountain Goat hunting
- Permanently protecting key habitat along the Yellowstone River



Conservation Partners



At SITKA we believe it is our duty as a hunting brand to support the national, bedrock organizations of the North American model for wildlife conservation. Without the work of these organizations, hunting opportunities and access would cease to exist. We are proud to support the efforts of the following organizations:



Grant Projects



California Waterfowl



Grantee

California Waterfowl is a 501c3 organization whose mission is to grow California's waterfowl populations, wetlands and hunter-conservationist communities. Their vision is a California with thriving waterfowl populations, vibrant wetland ecosystems and respected hunting communities.

Focus Area

The mallard population in the Sacramento Valley has declined over the last two decades due to loss of habitat and changing agricultural practices. Many hens nest in cereal wheat fields and are destroyed by harvest equipment. California Waterfowl Association rescues nests imperiled by normal and necessary farming operations. Currently, they have no way of searching for nests in wheat fields because the standard method of using ATVs and ropes would destroy the crop along with the farmer's profits.

Project

With SITKA's support, CWA was able to purchase a thermal drone to assist with nest searching and egg salvage. This allows CWA to locate nests in wheat fields and salvage them before they are at risk of being destroyed by harvesters. The drone will be used in the Delayed Wheat Program to accurately estimate the number of nests in each field and allow them to monitor nests in wheat fields to determine nest density, success, and other key metrics.





Ducks Unlimited



Grantee

Ducks Unlimited conserves, restores, and manages wetlands and associated habitats for North America's waterfowl.

Focus Area

Before the 1950s, over 670,000 acres in the Columbia Basin Wildlife Area (CBWA) were converted into irrigated croplands, altering its landscape from sagebrush shrubland-steppe to low-productivity wetlands. Despite being a historically significant area for North American waterfowl such as Mallards, northern pintails, and more, the CBWA, a vital overwintering site for hundreds of thousands of waterfowl, has lost functionality. This area is ecologically significant and is a crucial hub for North American waterfowl. Its degradation endangers the breeding, migratory, and overwintering habitats for waterfowl, shorebirds, songbirds and land birds.

Project

With SITKA's support, Ducks Unlimited and partners are working to restore wetland function and water management capabilities to maintain high quality habitat on public lands for the hundreds of thousands of waterfowl that overwinter here during the migration in the Pacific Flyway. They are capitalizing on existing, long-term partnerships in a bird-rich landscape to improve habitat in an area popular for public recreation and hunting, within other protected lands.



Five Oaks Agriculture and Research Education Center



Grantee

Five Oaks Ag Research and Education Center is a residential wetland management program that prepares young professionals with the applied skills and knowledge necessary to ensure healthy wetlands and waterfowl populations into the future.

Focus Area

Securing the future of waterfowl hunting and species management necessitates the cultivation of a new generation of natural resource experts. Effective training in science-based methods of habitat restoration and management requires Graduate Certificate Program (GSP) curriculum and mentorship to successfully transition into professional opportunities that will impact the quantity and quality of waterfowl habitat and create more opportunities for waterfowl hunting.

Project

SITKA provides scholarships to students for the GSP in Waterfowl Habitat and Recreation Management at the University of Arkansas at Monticello. Through their experience on the Five Oaks property in Humphrey, Arkansas, these trained experts will significantly influence the quantity and quality of waterfowl habitat, thereby creating more opportunities for waterfowl hunting and contributing to the broader conservation efforts in this critical ecological domain.



FreediveSafe! Hawaii



Grantee

FreediveSafe! Hawai'i was founded by a team of freediving and spearfishing industry leaders to improve the safety of the spearfishing and freediving communities in Hawai'i and worldwide.

Focus Area

Spearfishing is growing rapidly in popularity, yet there are not enough scalable education resources to protect new participants and educate on ocean sustainability. In Hawaii, 50 percent of all resident drownings are related to spearfishing, with most fatalities affecting Hawaiian subsistence spearfishermen between the ages of 12-27 years old. The risk of shallow water blackout/freediver blackout is the primary cause of these deaths.

Project

With SITKA's support, FreediveSafe! Hawaii created a 30 min safety video featuring USA National Spearfishing Champion Justin Lee, a Spearfishing Safety booklet containing key safety information, and deployed a school education program at Hawaii Schools statewide to promote spearfishing safety and sustainability. By raising awareness surrounding the dangers of the sport and scaling lifesaving educational resources to Hawaii's schools, we can ensure everyone can enjoy the sport safely and responsibly.



Georgia Wildlife Federation



Grantee

Georgia Wildlife Federation's mission is to encourage the intelligent management of the life-sustaining resources of the earth – its essential water resources – its protective forests and plant life – and its dependent wildlife – and to promote and encourage the knowledge and appreciation of these resources, their interrelationship and wise use.

Focus Area

In order to protect the future of hunting and our wildlife conservation models, there is an increasing need for access and education in hunting and shooting sports.

Project

SITKA supports the Academics Afield program - a college learn-to-hunt curriculum initiated and supported by Georgia Wildlife Federation and the Georgia R3 Initiative. The program provides mentored hunting and education experiences to college students in Georgia to remove participation barriers while providing training and opportunities to students new to target shooting and hunting. Academics Afield increases participation and the purchase of hunting licenses, ammunition, and firearms, thus increasing the available funds for conservation in Georgia, and advancing equity in hunting and the shooting sports.



Glen Canyon Institute



Grantee

Glen Canyon Institute is dedicated to the restoration of Glen Canyon and a free flowing Colorado River and actively works non river management and ecosystem restoration in the Colorado River Basin.



Focus Area

Once considered the biological heart of the Colorado River, Glen Canyon featured diverse landscapes with 79 plant, 189 bird, and 34 mammal species before 160,000 acres of land and ecosystems were dammed to create Lake Powell. Since the early 2000s, Lake Powell's record lows, driven by overuse and climate change, have once again changed the ecological dynamics of Glen Canyon. The recession of Lake Powell is leaving over 100,000 acres exposed and has unveiled canyons and riparian corridors once lost. These corridors provide vital habitat for insects, birds, amphibians, reptiles, rodents, otters, beaver, coyote, and ungulates like mule deer and bighorn sheep, and their ecological rebound poses challenges, necessitating strategic interventions to manage and restore the emergent land and ecosystems.

Project

SITKA is supporting the Glen Canyon Institute's vegetation and wildlife surveys through the Emerging Resources Documentation and Protection Program. This project will collect scientific data on the burgeoning ecosystems in Glen Canyon to inform management agencies, decision-makers, and the public about the restoration and protection of these vital riparian habitats.





Hunters of Color



Grantee

Hunters of Color is the only nationwide hunting nonprofit led by Black, Indigenous and People of Color (BIPOC) working on increasing participation in hunting for the sake of conservation, food sovereignty, and to preserve ancestral traditions.

Focus Area

There is a significant participation gap for People of Color in the hunting and conservation communities. This is attributed to a lack of education and outreach programs, access to resources, training, mentorship, and hunting opportunities for BIPOC communities. Additionally, there are stigmas and misconceptions surrounding hunting within these communities and externally.

Project

SITKA supports Hunters of Color’s mentorship program expanding into five more states and bringing on five new ‘HOC Ambassadors’ to lead outreach in their communities. These education programs help create over one thousand new hunters annually. Support will also be used to design and implement a comprehensive leadership training program tailored to BIPOC individuals. This initiative will empower underrepresented communities to take active roles in hunting, conservation, and environmental stewardship.



Montana Wilderness School



Grantee

Montana Wilderness School (MWS) provides empowering expeditionary wilderness courses to youth that foster personal growth and cultivate a conservation ethic through connecting with remote landscapes and wild places.

Focus Area

An increasing number of youth have become disconnected from nature. Modern lifestyles, dominated by technology and urbanization have created a growing gap between young individuals and the natural world. Equally, some simply lack access and opportunity to experience the wilderness. This disconnection raises concerns about the well-being and development of today's youth, alongside the future of environmental stewardship and practical pathways to hunting.

Project

SITKA sponsors the participation of 10 students in Montana Wilderness School's renowned Backpacking Skills for the Aspiring Hunter Expedition. This needs based 10-day wilderness course focuses on fostering personal growth and instilling a conservation ethic through meaningful connections with wild places. By integrating survival skills with hunting regulations and field care of game with stewardship principles, MWS provides youth with experiences empowering them with the knowledge to become hunters and stewards of the environment while cultivating a deep appreciation for the natural world.



National Archery in Schools Program



Grantee

The National Archery in the Schools Program (NASP) promotes instruction in international-style target archery as part of in-school curriculum, to improve educational performance and participation in the shooting sports among students in grades 4-12.

Focus Area

Without deliberate opportunities for archery, youth participation in shooting sports faces a concerning decline. The lack of accessible programs hampers engagement, contributing to dwindling interest and skills in archery. This decline poses challenges to the broader shooting sports community, fostering a diminished appreciation for the sport, and limiting the potential recruitment of future hunters and enthusiasts.

Project

SITKA supports the NASP by providing equipment grants to 10 new schools across the country for building archery programs in grades 4-12. Based on the program's track record, 66% of students are first time archers, 91% of which will pursue, or want to pursue, other outdoor activities because of NASP.



National Deer Association



Grantee

The National Deer Association (NDA) works to ensure the future of wild deer, wildlife habitat and hunting. NDA is North America's leading deer organization that works to empower deer hunters to be stewards of all wildlife, unite behind wise deer policy and help fight the biggest threats to deer, including diseases, loss of access and more.

Focus Area

Populations of the Red-cockaded Woodpecker have experienced massive declines since European colonization of North America. This is due to extensive habitat loss and alteration. Logging of old-growth pine forests and alteration of the fire regime throughout the historic range of the species were the primary causes of population decline.

Project

SITKA supports NDA's now 30-year commitment to identify National Forests in the Southeast that need sufficient funding and staff capacity support to both evaluate and manage habitat for Red-cockaded Woodpecker populations. With this grant NDA would provide much needed support to selected National Forests by providing assistance in both population monitoring and cavity installation. The implementation of these management strategies, represents appropriate ecosystem management in the fire-maintained pine ecosystems of the southeastern United States that will ultimately benefit a great number of additional species of plants and animals adapted to this ecosystem.



National Parks Conservation Association



Grantee

The National Parks Conservation Association (NPCA) has been a leading, independent voice to protect and enhance America's national parks for present and future generations. The NPCA works to engage with congressional and administrative leadership on a national level, while maintaining a strong local presence through its 27 regional field offices across the country that are deeply connected to individual parks and the communities and landscapes that surround them.

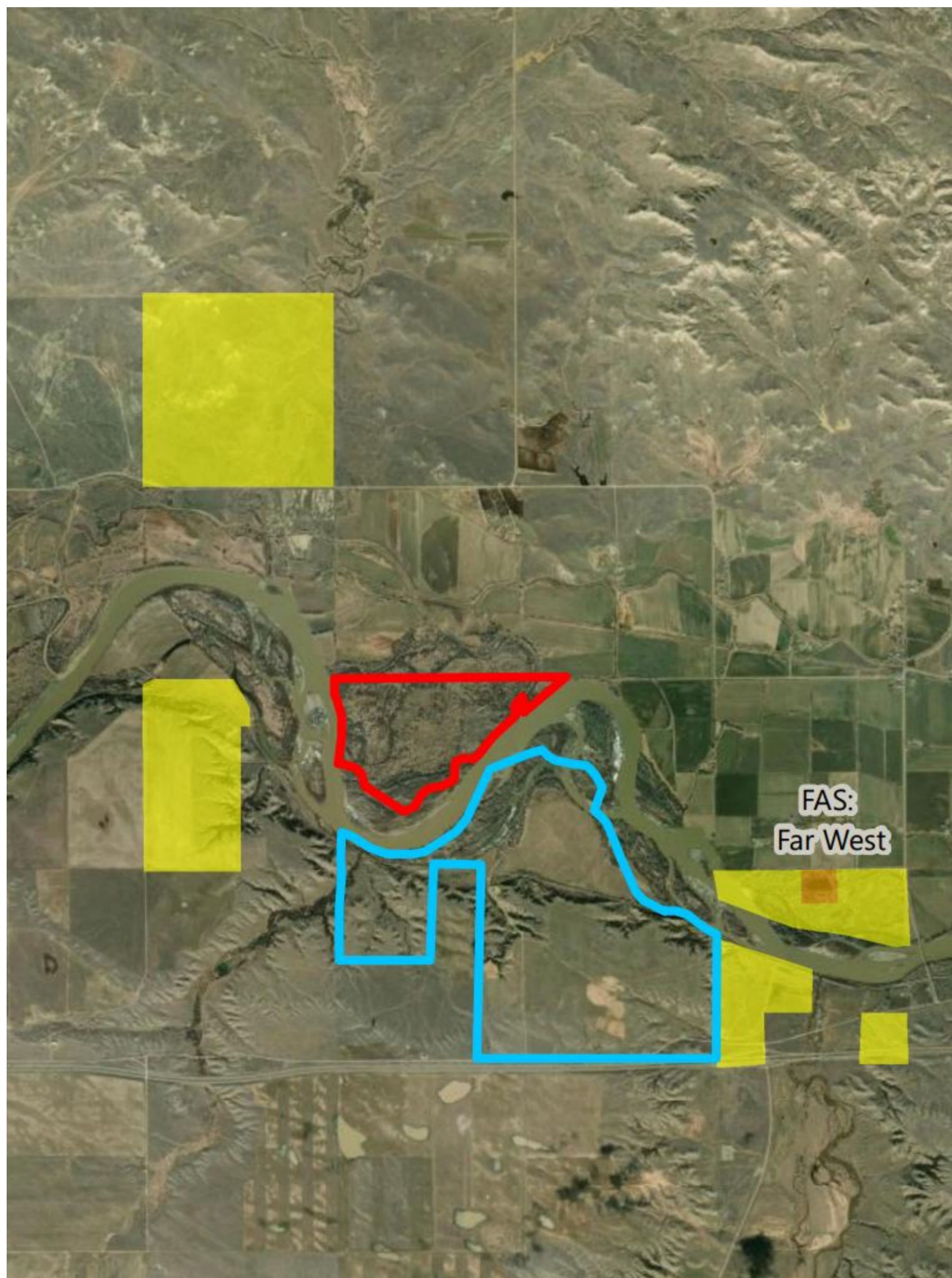
Focus Area

Migratory wildlife faces increasing connectivity issues across private and public lands in the Northern Greater Yellowstone Ecosystem. Migration routes are shifting in the face of climate change and human development, and fences have a huge impact on survival. Meanwhile, education and large landscape collaboration amongst government agencies, ranchers, non-profits and recreators is lacking in critical, park adjacent areas.

Project

SITKA supports the Yellowstone Field Office to work with private landowners, community members, decision-makers and public resource managers to protect and restore critical habitat and wildlife migration routes in Yellowstone and beyond park boundaries. The Pronghorn Program has facilitated the removal or modification of more than 55 miles of fencing and worked with over 50 private landowners. Funding supports scaling the work in three pronghorn migration corridors throughout the Northern Greater Yellowstone Ecosystem: Madison Valley, Paradise Valley, and NE Idaho.





Pheasants Forever



Grantee

Pheasants Forever conserves pheasants, quail, and other wildlife through habitat improvements, public access, education, and conservation advocacy.

Focus Area

Without public and private partnerships to acquire and permanently protect land, key habitat corridors and public access will cease to exist. There is a key riparian corridor on the Lower Yellowstone River that consists of hardwood forest and native prairie that supports numerous game species (mule and white-tailed deer, pheasants, wild turkeys, and sharp-tailed grouse among others) and a variety of nongame species that if unprotected will be converted to cropland.

Project

SITKA supports Pheasants Forever in acquiring the Wildcat North segment to secure 328-acres for permanent habitat protection and public access along the Lower Yellowstone River in southeastern Montana. This is part of a larger, strategic acquisition that will create a 2,300-acre complex of publicly accessible land with over four miles of river frontage. Most land occurring within the Lower Yellowstone River Valley is in private ownership, making this stretch of river largely inaccessible to hunters/anglers and the public. This acquisition is a high priority for both habitat protection and public access.



National Wild Turkey Federation



Grantee

The National Wild Turkey Federation (NWTF) is dedicated to the conservation of the wild turkey and the preservation of our hunting heritage. Through its team of professional conservation staff and dedicated grassroots volunteers, the NWTF works to conserve critical wildlife habitats and preserve the hunting lifestyle utilizing diverse partnerships with state and federal agencies, as well as private organizations and landowners, focusing conservation efforts in priority focal landscapes across the country.



Focus Area

Commonly referred to as riparian corridors or zones, riparian areas are natural ecosystems located along the banks of rivers, streams, creeks, or any other water network. While riparian areas make up less than 1.5 percent of the entire landscape in the Great Plains, more than 70 percent of all plains wildlife species depend on these ecosystems for water, food, cover, roosting, nesting and as travel corridors. Often described as “ribbons of life,” riparian areas support deciduous trees and shrubs in an otherwise arid and open grassland environment. Additionally, these areas provide roosting and nesting for birds, and food, cover and travel ways for a variety of animals. In the arid plains of the American West, many of these important wildlife habitats are in poor condition due to a variety of causes.

Project

SITKA supports the NWTF’s Waterways for Wildlife Initiative (W4W) which is a comprehensive, landscape-level effort to address critically urgent conservation needs in riparian ecosystems along rivers and streams in the Great Plains of the United States. The NWTF partners with landowners, governmental agencies, and other conservation organizations to restore these vitally important ecosystems across the landscape. Over the next 10 years, the program will improve 75,000 acres of wildlife habitat along 1,500 linear miles of waterways in the Great Plains landscape.



Rocky Mountain Goat Alliance



Grantee

Rocky Mountain Goat Alliance is a non-profit conservation group dedicated to mountain goat conservation that works through three program areas: citizen science, education, and research and conservation grants.

Focus Area

Mountain goats face a variety of human and environmental challenges including dangerous terrain and weather, a particular vulnerability to the impacts of a changing climate, stress from disturbance through motorized vehicles such as helicopters and drones, and through popular trails and campsites where human and mountain goat interaction is inevitable. Hunters have an added responsibility to understand their stewardship beyond other forms of mountain recreation, particularly around the selection of a target animal.

Project

SITKA supports the development of a modern, interactive education program to teach hunters the differences between male and female mountain goat biology, habitat, behavior, and hunting strategies. This education will support hunters harvesting the right animals and protecting the health of mountain goat herds to ensure the continued opportunity for hunters to draw, win, or purchase a hunting tag.



Texas Parks and Wildlife Foundation



Grantee

Texas Parks and Wildlife Foundation (TPWF) works to expand protected habitat areas statewide, foster scientific research, increase access to outdoor experiences, and cultivate stewardship opportunities to benefit present and future generations of Texans.



Focus Area

In recent years, there has been a concerning decline in new hunter registrations across various regions. Factors such as changing demographics, urbanization, and a shift in recreational preferences contribute to the dwindling numbers of individuals joining the hunting community. This decline raises important considerations for wildlife management and conservation efforts, as the recruitment of new hunters is essential for maintaining a balance in ecosystems and ensuring sustainable wildlife populations.

Project

SITKA supports the Texas Parks and Wildlife Foundation in their Stewards of the Wild program and the Mentored Hunting Initiative which provides high-touch, low-cost experiences that both inspire and provide participant's foundational skills to engage in hunting. Learning about hunting in a professional and welcoming environment, these adults feel empowered to continue participating in conservation and hunting into the future.



Theodore Roosevelt Conservation Partnership



Grantee

The Theodore Roosevelt Conservation Partnership (TRCP) is a national partnership organization of 63 hunting, fishing and conservation organizations, outdoor businesses, scientific associations, and more than 135,000 individual grassroots partners. Through its Policy Council and Corporate Councils, and a series of policy working groups, the TRCP and its partners leverage federal and state conservation solutions to ensure all Americans have access to quality places to hunt and fish.

Focus Area

Chronic wasting disease is the greatest wildlife disease challenge of our generation and an existential threat to North America's wild deer hunting traditions and conservation funding. The disease has now been detected in 31 states and is a considerable threat to wild cervid populations across the country. It continues to spread, and a coordinated campaign waged by NGOs and businesses is necessary to stem the tide of this threat.

Project

SITKA supports TRCP's work to convene stakeholders and host a series of engagement sessions to gather feedback on local issues and gain an understanding of the disease to bolster grassroots support for engagement and action. These efforts inform a national strategy to address CWD and build broader support for long-term solutions.



Kevin White - Wildlife Research Biologist

Grantee

Kevin is a wildlife research biologist jointly affiliated with the University of Alaska Southeast and the University of Victoria, where he is a PhD candidate in the Applied Conservation Science Lab. His work focuses on the ecology and conservation of mountain ecosystems with a specific interest in mountain goat population ecology in relation to weather, climate and environmental conditions.



Focus Area

Iconically described as “a climbing bearded beast the color of winter”, mountain goats are a highly valued species of North American mountain landscapes but are particularly sensitive to climate change and human disturbance. Among the climate-linked factors of critical importance are avalanches, which can impose major demographic impacts through direct mortality but may also provide important benefits through facilitation of food resource availability during critical times of the year.

Project

SITKA supports Kevin’s work to follow up on long-term studies about negative impacts of avalanches on mountain goats (i.e. high mortality), by conducting field studies to understand how avalanches may benefit the species through facilitation of “green waves” of high-quality forage during the spring, a critical period that coincides with the birth of newborn kids. Understanding these relationships will fill an important knowledge gap and aid in the ability to understand how climate-linked factors influence mountain goat populations and advance our capability to manage populations and ensure long-term sustainability. This research will broadly contribute to the understanding of how snow and avalanches impact mountain ecosystems – in both beneficial and detrimental ways.





Wild Sheep Foundation



Grantee

The Wild Sheep Foundation (WSF) is the conservation organization dedicated to restoring wild sheep populations through promoting scientific wildlife management and educating the public on the conservation benefits of hunting. Through its chapters and affiliates, WSF actively funds initiatives throughout North America and beyond to ensure that wild sheep populations and their habitats worldwide are effectively managed, accessible, utilized and supported.

Focus Area

Wild Sheep are highly susceptible to a respiratory disease when they come into contact with domestic sheep called MOvi. Exposure leads to widespread respiratory illness amongst herds, population decline, wider ecological impacts, and significant conservation and management challenges.

Project

SITKA supports the 6th year of a pathogen surveillance research project on the Frasier River which includes habitat enhancements and a disease workshop for the 13 states, provinces and first nations working on MOVI reduction in wild sheep populations.



Wyoming Migration Initiative



Grantee

The Wyoming Migration Initiative is a project of the University of Wyoming that works to advance the understanding, appreciation, and conservation of Wyoming's migratory ungulates by conducting innovative research and sharing scientific information through public outreach.

Focus Area

Mule Deer are dependent on large tracks of connected habitat in order to fulfill the many seasonal demands of their survival. Many of their critical habitat areas are affected by impediments like roads, developments, fences, etc. Understanding their required migration routes is imperative to being able to protect the future of the species.

Project

SITKA supports the continuation of the study of mule deer migrations in the Red Desert Mule Deer for the 11th consecutive year, making it one of only a few projects with over a decade of information on big game movements and populations. SITKA Ecosystem Grants funding directly supports the purchase of additional collars, winter captures, and fall fieldwork to study the migration patterns of ungulates and how they contend with the effects of human disturbance in the Red Desert – Hoback region.



Wyoming Wildlife Federation



Grantee

The Wyoming Wildlife Federation delivers leadership in conservation for the State's wildlife, hunters, anglers, and conservationists through policy, education, advocacy, and habitat projects.

Focus Area

One of the most prominent obstacles faced by migrating wildlife is roads. In Wyoming, the Kemmerer to Evanston portion of Hwy 189 is on the state's top 10 priority list for a wildlife crossing due to its high rate of deer-vehicle collisions. The main big game species impacted are Mule Deer and Pronghorn, in particular the Wyoming Range Mule Deer herd that is a Wyoming Game and Fish Department priority herd.

Project

Wildlife crossings are up to 90% effective in mitigating roadway collisions with ungulates and, while the initial cost of building a crossing is steep, the benefit they give to the wildlife and the public safety is priceless. SITKA supports the engineering and construction of a wildlife crossing on Hwy 189 so that the Wyoming Range and Uinta mule deer herds can have safe passage over this barrier and conflicts between motorists and wildlife can be reduced.



Theodore Roosevelt Conservation Partnership



Grantee

The Theodore Roosevelt Conservation Partnership (TRCP) is a national partnership organization of 63 hunting, fishing and conservation organizations, outdoor businesses, scientific associations, and more than 135,000 individual grassroots partners. Through its Policy Council and Corporate Councils, and a series of policy working groups, the TRCP and its partners leverage federal and state conservation solutions to ensure all Americans have access to quality places to hunt and fish.



Focus Area

Climate change is affecting our hunting and fishing opportunities. Hunters and anglers are often the first to witness the impacts on our nation's fish and wildlife resources, including changes in migration patterns, altered breeding seasons, shifts in home ranges, loss of habitat from sea level rise, and even loss of trail and road access due to extreme weather events such as flooding and storm surges. However, they are one of the least active groups when it comes to advocacy. Healthy habitat can help to slow and reverse these effects, making the push for conservation and restoration more relevant than ever. Sportsmen and sportswomen are essential to securing these solutions.

Project

SITKA supports TRCP in creating a web-based tool to fill the knowledge gap and develop effective issue framing to educate and empower hunters and anglers to engage on climate. The tool will deliver resources, and highlight stories and experiences by sportsmen and women in the sporting community, and demonstrate climate impacts and solutions, giving the industry and community support for engaging in the conversation.



SITKA Ecosystem Grants Stories



1. The Bridger Ridge Trail

Gallatin Valley Land Trust  

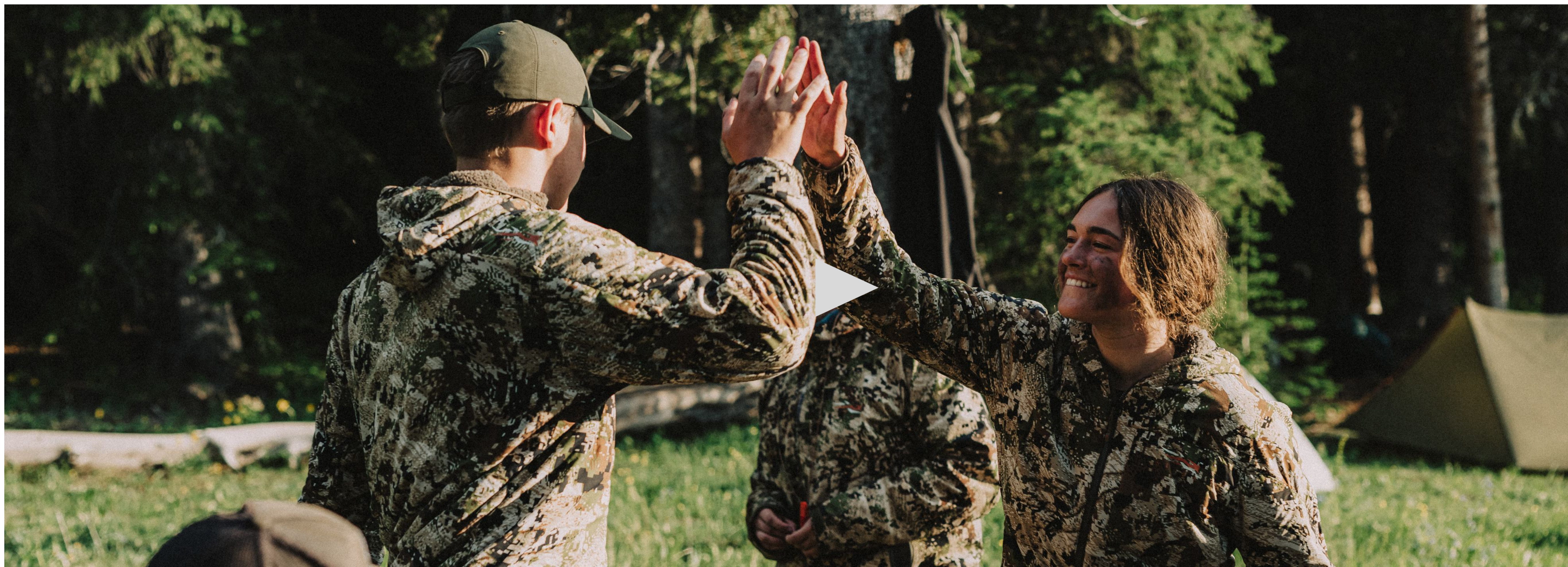
The 18.9 mil-long Bridger Ridge Trail just outside of Bozeman is an iconic path. Access to this trail was largely uninhibited, except one key section of the crossing that carried itself over a private land boundary - thankfully, these forward thinking landowners elected to allow an easement to be created. With support from the SITKA Ecosystem Grants program, the Gallatin Valley Land Trust was able to obtain and secure a clear, accessible crossing along this easement that will ensure the use of this iconic trail for all for decades to come



2. Backpacking Skills for Aspiring Hunters

Montana Wilderness School  

Montana Wilderness School facilitates multi-week expeditions with young, aspiring hunters to help them build practical outdoor skills. These experiences instill an appreciation for public lands and the wild, while setting the foundation to proficiency and confidence in the backcountry. Through the SITKA Ecosystem Grants program, we provided scholarships to every student in the course to ensure proficiency in future hunters and their foundational education in stewardship and conservation.



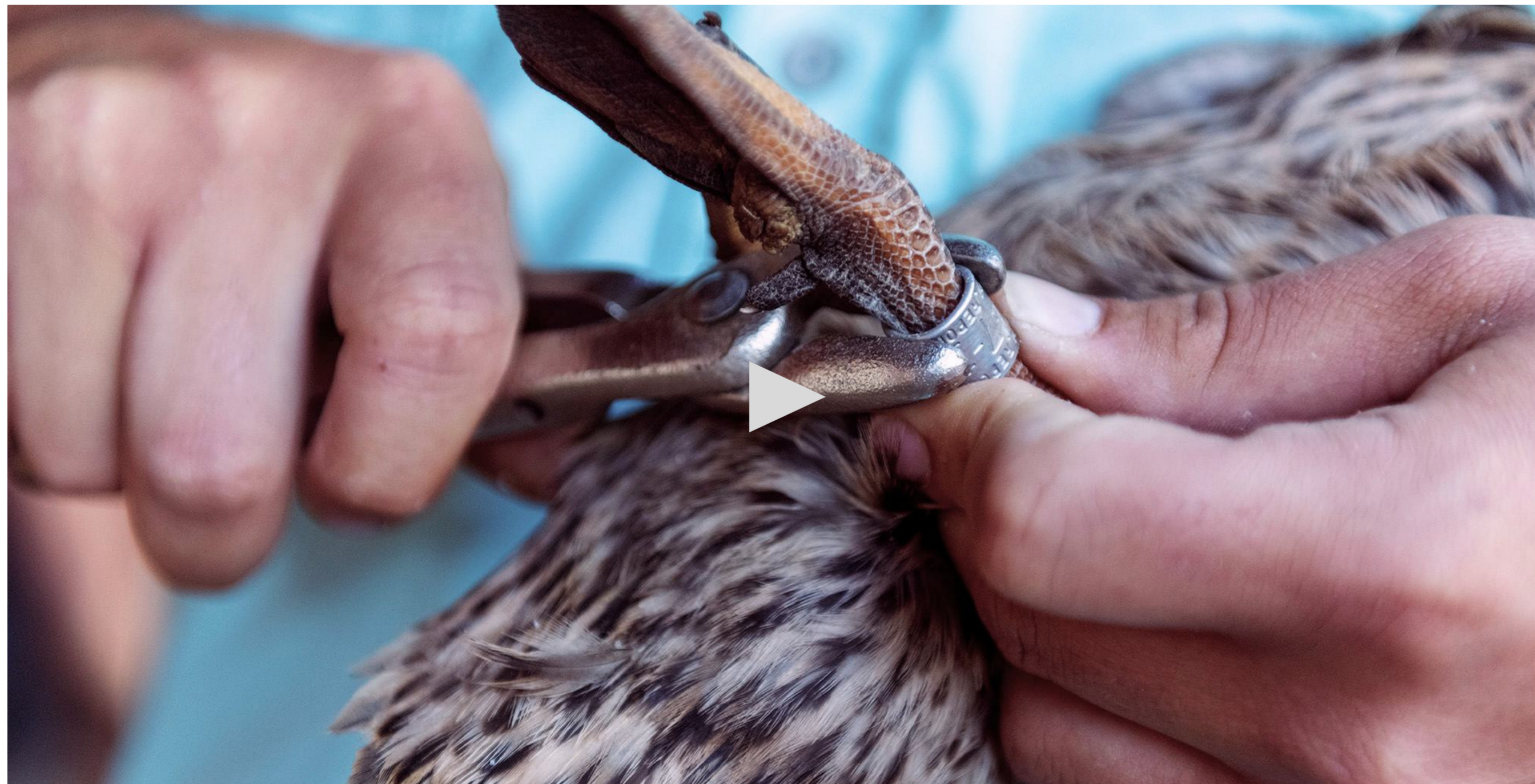
3. Salvaging Nests to Save Waterfowl

California Waterfowl Association



Every spring, hundreds of thousands of waterfowl build nests in farm fields of California's Sacramento Valley. Historically, thousands of nests have been destroyed during the harvest. SITKA Ecosystem Grants support the efforts of the California Waterfowl Association that incentivize farmers to delay their harvest to permit the collection of eggs with the help of biologists. The eggs are then raised in captivity.

Once they are old enough to be released, they are banded and put back into the wild. This program is incredibly unique and offers an opportunity for us to follow the story from egg to duck, while shining a light on the efforts made by the farmers and biologists working to preserve our waterfowl populations.



4. After Fire Comes Growth

National Wild Turkey Federation



Once a widespread landscape in North America, approximately 99.9% of the Oak Savanna habitat that existed in the US prior to European settlement has now been lost. With support from the SITKA Ecosystem Grant program, the National Wild Turkey Federation is working to protect and restore these imperiled ecosystems through controlled burning and replanting of native grasses and forbs. Like much of North America, this land was once largely an oak savanna ecosystem, a transitional habitat consisting of grassland and mature oaks. These savannas were the ideal habitat for wildflowers and

pollinators, deer and bear, insects, reptiles, turkeys, and more. Regular wildfires and Native American cultural burning kept these ecosystems in perfect balance. In collaboration with the U.S. Forest Service, the NWTF and private landowners, this grant aims to restore much of this habitat through timber removal, controlled burns, and grass and wildflower seeding. The aim is to create large contiguous corridors of oak savanna across both private and public land.



5. Flyways Collaboration

University of Arkansas, Monticello
Five Oaks Agricultural Research Education Center
California Waterfowl Association
Delta Waterfowl



SITKA Studio partnered with one of America’s oldest instrument makers, Martin Guitar, and three-time ACM Male Artist of the Year winner, Thomas Rhett, in a collaboration for conservation. Together we created a custom Martin guitar symbolizing our collective stoke for wild places, craftsmanship and music. The guitar was auctioned off to support waterfowl conservation across the nation. We matched the money raised by the auction to fund waterfowl conservation and research projects across the major migratory flyways in North America. We are honored to feature and support the work of these highly respected organizations: The University of Arkansas Monticello and the Five Oaks Agricultural Research and Education Center, The California Waterfowl Association, and Delta Waterfowl.



A COLLABORATION FOR CONSERVATION

SITKA × THOMAS RHETT ×  EST. 1833



ALL STRAIGHT LINED AND
MARSHED UP NOW
YOU ARET FOOING ME
WASNT LONG AGO WE
TORE THE ROOF OFF
THAT ONE RED LIGHT TOWN
AND HEY DARLING SIPPIN
THAT RED WINE
ALL CLASBY KICKED BACK
ON THE BENCH



1. SITKA STUDIO x Martin Guitars



SITKA STUDIO is an innovation incubator by SITKA Gear that strives to expand creative perspectives and build unique products and experiences that connect different cultures. Recent collaborations include Martin Guitar, Thomas Rhett, Black Diamond, The James Brand, and Peak Design.



Through a creative collaboration with Martin Guitars, SITKA STUDIO created a custom guitar symbolizing our collective stoke for wild places, craftsmanship and music. The guitar was auctioned off, creating a grant fund to support waterfowl conservation across the nation.

Four organizations were funded for work that is being carried out in every major flyway in North America:

California Waterfowl Association
Delta Waterfowl
Five Oaks Ag & Research Education Center
University of Arkansas, Monticello

sitkagear.com/sitkastudio,
or follow us on Instagram @sitkastudio



2. SITKA STUDIO x Peak Design

SITKA STUDIO and Peak Design came together to create unique camera accessories. As a product of the collaboration, we made a joint donation to the Theodore Roosevelt Conservation Partnership to underscore our shared value of land conservation.



Conservation is our Core



S I T K A

