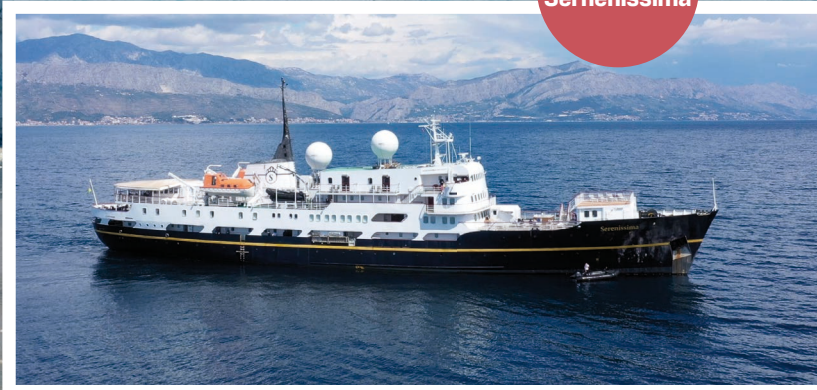


# SVALBARD ADVENTURE MINI CRUISE

The ultimate Spitsbergen experience



MS  
Sernenissima





# DISCOVER THE MS SERENISSIMA

## A classic ship for the ultimate Arctic adventure

Step aboard the MS Serenissima, a vessel that seamlessly blends the charm of a classic ocean liner with modern amenities. Originally built as the Harald Jarl for Hurtigruten in 1960 at the renowned Blohm & Voss shipyard, the ship has been meticulously renovated over the years, preserving its history while offering a comfortable and intimate cruising experience.

### Onboard Experience

Experience the warm and welcoming atmosphere aboard the MS Serenissima on your Svalbard Adventure Mini-Cruise. This classic ship blends intimate charm with modern comforts, offering the perfect setting to relax and take in the breathtaking Arctic scenery. With a capacity of just 103 guests, the MS Serenissima ensures a personalised and relaxing voyage.

Your local guides will be your constant companions throughout the journey, always present and available to answer questions and share captivating stories about the region. They continuously scout for wildlife, enhancing your experience and making every moment on board feel like a journey back in time, with all the comforts of today. Whether you're unwinding in cosy lounges or engaging with fellow travelers, you'll enjoy a truly unique and memorable Arctic adventure.

### Dining and Lounges

**Venice Restaurant:** Indulge in exquisite cuisine at the Venice Restaurant. You will enjoy a buffet-style breakfast and lunch, featuring a variety of sweet and savoury options. Dinner will be a delightful three-course meal, served to you. With a focus on great flavours and fresh ingredients, dining here is a highlight of your journey. The dining room features great views from all tables.

**Andrea Lounge:** Located at the back of the ship, the Andrea Lounge offers a cosy and elegant space to unwind. Enjoy a quiet moment with a book, socialise with fellow travellers, or simply take in the stunning views through the large windows. The lounge also features a bar, where you can enjoy a refreshing drink as you relax.

**Harald Jarl Lounge:** Situated at the front of the ship, the Harald Jarl Lounge offers comfortable seating and a warm ambiance, creating a welcoming atmosphere perfect for relaxation and conversation. Its inviting setting makes it an ideal spot to gather and unwind before dinner.

### Decks and Accommodations

The MS Serenissima features a range of accommodations to suit your preferences, from the luxurious Serenissima Suites to comfortable staterooms.

**Suites and Staterooms:** Choose from a selection of suites and staterooms, each thoughtfully designed with comfort in mind. With the exception of the inside cabins, all staterooms are outside facing, with either portholes or windows.

**Decks:** Explore the ship's decks, where you can enjoy panoramic views, soak up the sun, or take a leisurely stroll. The outdoor areas feature an expansive observation deck, offering guests panoramic 360-degree views of the ocean and the surrounding landscape. From this vantage point, visitors can descend to the front deck (deck 5), which includes an open-air bar and a compact fitness room.

### A Journey Like No Other

Sailing aboard the MS Serenissima is more than just a voyage; it's a journey into the past, where the elegance of traditional sea travel meets the excitement of modern exploration. Whether you're dining in style, relaxing in one of the inviting lounges, or taking in the views from the deck, every moment aboard the MS Serenissima is designed to enhance your Svalbard adventure.



Historic image of the ship in Magdalenefjorden, during its time as MS Harald Jarl

Photo: Knut Aune Kunstforlag. Reproduced with permission from Pictura Gruppen Norge AS





# SHIP SPECIFICATIONS

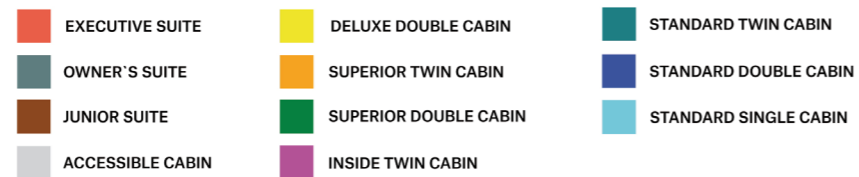
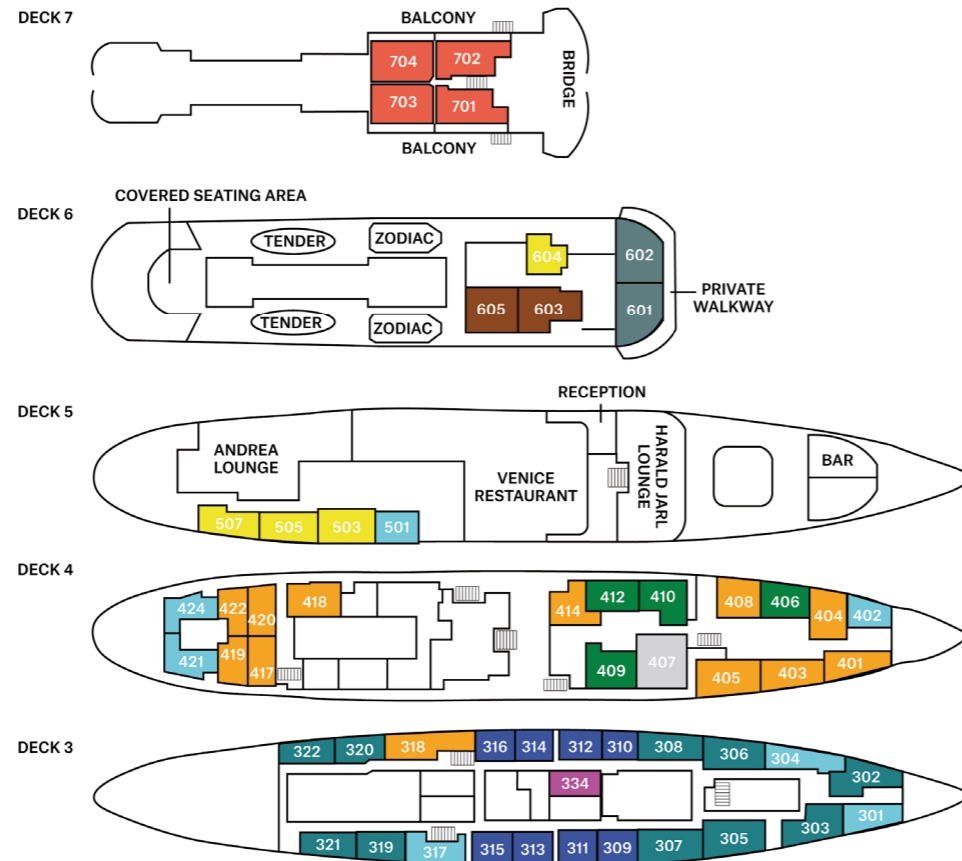
## Cabin Overview

- 4 Executive Suites
- 2 Owner's Suites
- 2 Junior Suites
- 4 Deluxe Double Cabin
- 1 Accessible Cabin
- 4 Superior Double Cabin
- 12 Superior Twin Cabin
- 8 Standard Double Cabin
- 10 Standard Twin Cabin
- 7 Standard Single Cabin
- 1 Inside Twin Cabin

Maximum capacity: 103 guests

## Facilities

- Restaurant
- Two lounges
- Fitness room
- Two bars
- Outdoor seating areas



**Executive Suite with balcony**

Passengers: 2

Cabin size: 26 m2



**Owner's Suite with private walkway**

Passengers: 2

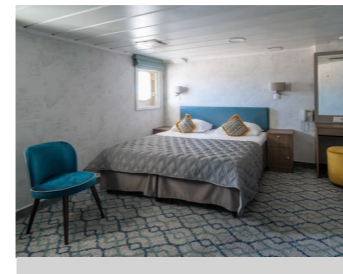
Cabin size: 23 m2



**Junior Suite**

Passengers: 2

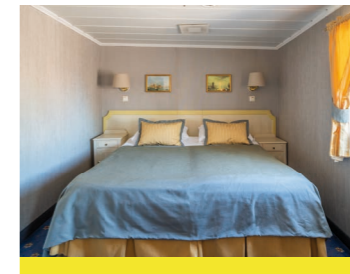
Cabin size: 21 m2



**Accessible Cabin**

Passengers: 2

Cabin size: 15 m2



**Deluxe Double Cabin**

Passengers: 2

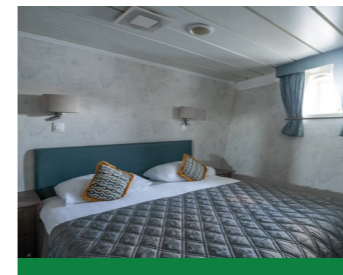
Cabin size: 15-16 m2



**Superior Twin Cabin**

Passengers: 2

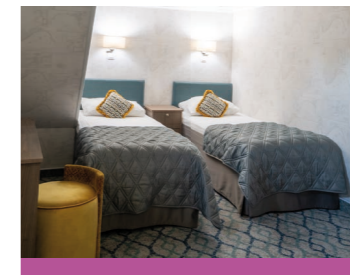
Cabin size: 12-20 m2



**Superior Double Cabin**

Passengers: 2

Cabin size: 12-20 m2



**Inside Twin Cabin**

Passengers: 2

Cabin size: 7-13 m2



**Standard Twin Cabin**

Passengers: 2

Cabin size: 10-17 m2



**Standard Double Cabin**

Passengers: 2

Cabin size: 10-17 m2



**Standard Single Cabin**

Passengers: 1

Cabin size: 7-13 m2





# EMBARK ON THE SVALBARD ADVENTURE MINI CRUISE TO THE WEST COAST OF SPITSBERGEN

Step aboard the MS Serenissima for an unforgettable journey to experience the Arctic's pristine wilderness. With two itineraries to choose from, immerse yourself in breathtaking landscapes, abundant wildlife, and rich history. Our local expert guides, fluent in English, German, Norwegian and French ensure a safe and enriching experience as we navigate through the stunning fjords and icy waters of Spitsbergen.

In addition to English, Norwegian, German and French speaking guides, additional languages are possible – please speak with our team.

## Local Expedition Team:

The expedition team on MS Serenissima consists of local expert guides ensuring a rich and informative experience. With extensive knowledge of the Arctic region, they bring the landscapes, wildlife, and history of Svalbard to life. The guides are dedicated to making your journey both engaging and unforgettable.

## Safety and quality:

Your safety is our priority. Our experienced and highly trained expert guides from Svalbard will accompany all excursions, equipped with knowledge and tools to handle encounters with polar bears. All planned activities are subject to change based on weather and ice conditions to ensure a safe and enjoyable experience for all passengers.

Hurtigruten Svalbard is proud to be ISO certified in accordance with ISO 9001:2015 and ISO 14001:2015 standards, demonstrating our commitment to quality management, environmental responsibility, and safety. As a member of both Visit Svalbard and AECO (Association of Arctic Expedition Cruise Operators), we uphold the highest standards in tourism and sustainable operations in the Arctic. These certifications ensure our guests can trust that their experience with us prioritises not only exceptional quality but also the safety and preservation of the unique Svalbard environment.

## Departure dates 2025:

|              |      |                    |
|--------------|------|--------------------|
| 15 - 19 May  | C1   | Thursday to Monday |
| 19 - 22 May  | C2   | Monday to Thursday |
| 22 - 26 May  | C3   | Thursday to Monday |
| 26 - 29 May  | C4   | Monday to Thursday |
| 29 - 2 June  | C5   | Thursday to Monday |
| 2 - 5 June   | C6   | Monday to Thursday |
| 5 - 9 June   | C7   | Thursday to Monday |
| 9 - 12 June  | C8   | Monday to Thursday |
| 12 - 16 June | C9   | Thursday to Monday |
| 16 - 19 June | C10  | Monday to Thursday |
| 19 - 23 June | C11  | Thursday to Monday |
| 23 - 26 June | C12  | Monday to Thursday |
| 26 - 30 June | C13  | Thursday to Monday |
| 30 - 3 July  | C14  | Monday to Thursday |
| 3 - 7 July   | C15  | Thursday to Monday |
| 7 - 10 July  | C16  | Monday to Thursday |
| 10 - 14 July | C17  | Thursday to Monday |
| 14 - 17 July | C18  | Monday to Thursday |
| 17 - 21 July | C19  | Thursday to Monday |
| 21 - 24 July | C20  | Monday to Thursday |
| 24 - 28 July | C21  | Thursday to Monday |
| 28 - 31 July | C22  | Monday to Thursday |
| 31 - 4 Aug   | C23  | Thursday to Monday |
| 4 - 7 Aug    | C24  | Monday to Thursday |
| 7 - 11 Aug   | C25  | Thursday to Monday |
| 11 - 14 Aug  | C26  | Monday to Thursday |
| 14 - 18 Aug  | C27  | Thursday to Monday |
| 18 - 21 Aug  | C28* | Monday to Thursday |
| 21 - 25 Aug  | C29* | Thursday to Monday |
| 25 - 28 Aug  | C30* | Monday to Thursday |
| 28 - 1 Sep   | C31* | Thursday to Monday |
| 1 - 4 Sep    | C32  | Monday to Thursday |
| 4 - 8 Sep    | C33  | Thursday to Monday |
| 8 - 11 Sep   | C34  | Monday to Thursday |

English, Norwegian, German and French guides: All departures  
Italian guides: 4 departures\*

## What's Included:

**Food and Drink:** Full board (breakfast, lunch, and dinner) with complimentary tea and coffee.

**Activities:** Guided landings with small expedition boats depending on the weather and ice conditions, onboard lectures, and informal gatherings.

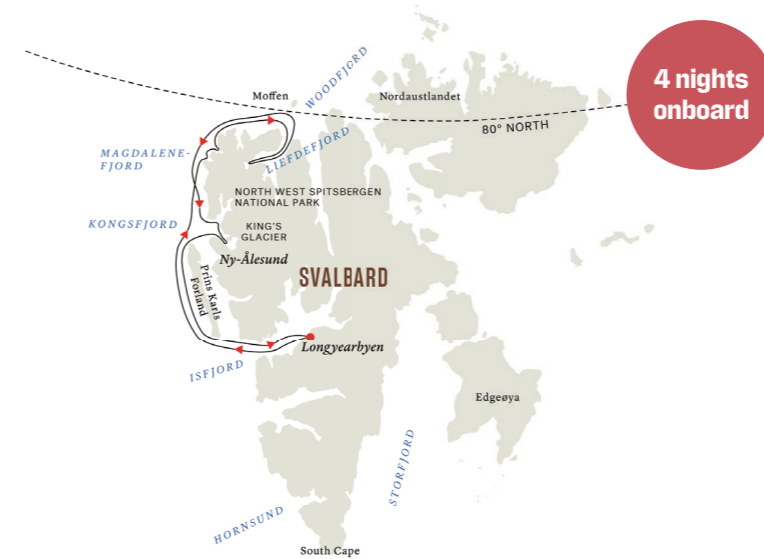
**Equipment:** Loan of trekking poles and thermal suits for activities onboard.

### Activities:

- Guided landings with small expedition boats.
- Onboard lectures by the Local Expedition Team.
- Informal gatherings for daily recaps and preparation for the day ahead.
- Trekking and wildlife spotting, including possible sightings of seals, reindeer, polar bears and walrus.

## Tentative itinerary 1:

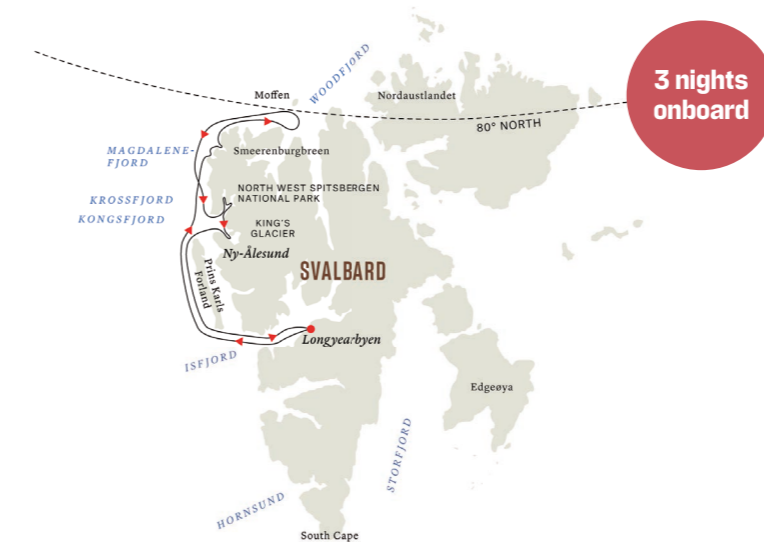
Cruise only - Thursday to Monday



- **Thursday:** Longyearbyen & Isfjorden
- **Friday:** Magdalenefjorden and the North West Corner
- **Saturday:** Woodfjorden, Liefdefjorden, Mofen, and 80° North
- **Sunday:** Kongsfjorden and Ny-Ålesund
- **Monday:** Longyearbyen

## Tentative itinerary 2:

Cruise only - Monday to Thursday



- **Monday:** Longyearbyen & Isfjorden
- **Tuesday:** Magdalenefjorden, North West Corner, Mofen, and 80° North
- **Wednesday:** Kongsfjorden and Ny-Ålesund
- **Thursday:** Isfjorden and Longyearbyen

\*Landings and activities may change or be canceled due to sea ice, weather conditions, or polar bears. Safety is always our priority, and alternative plans will be made to ensure a great experience.

## Highlights:

### Isfjorden: A Fjord of Majesty and Mystery

Sail through Isfjorden, one of the most prominent fjord systems on the Svalbard archipelago. As you glide through its icy waters, you'll be surrounded by stunning glacier fronts and U-shaped valleys carved by ancient glaciers. This fjord is a sanctuary for diverse wildlife, including Arctic foxes, reindeer, and a variety of seabirds. The dramatic landscapes and the tranquility of the fjord create a truly immersive Arctic experience.

### Magdalenefjorden: A Window to the Past

Land at Magdalenefjorden, a breathtaking site steeped in history and natural beauty. This fjord is not only known for its spectacular alpine-like scenery but also for its historical significance. Here, you'll find the remains of a 17th-century whaling station, including blubber ovens and a cemetery of 130 graves, offering a glimpse into the harsh life of early Arctic explorers. The area's scree slopes and beaches are also important breeding grounds for various bird species, adding to the fjord's vibrant natural tapestry.

### Liefdefjorden: The Heart of Arctic Wilderness (Itinerary 1 only)

Liefdefjorden, is a landscape of contrasts, where rolling red hills meet snow-capped mountains. This fjord is a paradise for nature enthusiasts, offering ample opportunities for wildlife spotting and hiking. The region is home to a variety of Arctic flora and fauna, with towering cliffs that echo with the calls of thousands of seabirds. As you explore this rugged terrain, you'll be captivated by the untouched beauty and serenity of the Arctic wilderness.

*Please note: Early in the season, ice conditions may prevent access to Liefdefjorden.*

### Mofen: A Polar Adventure Beyond the 80° Parallel

Venture above the 80° North latitude to the island of Mofen, an outpost renowned for its walrus population. As you sail under the Midnight Sun, you'll witness these impressive marine mammals lounging on the shores, a rare and unforgettable sight.

*Please note: Early in the season, ice conditions may prevent access to Mofen.*

### Kongsfjorden & Ny-Ålesund: The Pinnacle of Arctic Exploration

Discover the rich history and ongoing scientific research at Ny-Ålesund, situated in Kongsfjorden. Once a bustling coal mining settlement, Ny-Ålesund is now one of the world's northernmost research centers, hosting scientists from around the globe. Walk through this tiny community and explore its well-preserved buildings, learn about its pivotal role in Arctic exploration, and visit the northernmost post office in the world. Upon arrival in Ny-Ålesund, the ship will dock at the pier, and passengers can disembark directly from the ship onto the land.





# DISCOVER THE FLORA AND FAUNA OF SVALBARD ON YOUR ARCTIC ADVENTURE

The Arctic wilderness of Svalbard offers a unique and awe-inspiring opportunity to encounter a wide variety of plants and wildlife, both on land and in the surrounding ocean. Whether you're exploring the rugged landscapes of Longyearbyen or cruising through the icy waters aboard the MS Serenissima, each day brings new and exciting discoveries of the natural world.

## Wildlife in the Ocean

The icy waters of the Arctic Ocean surrounding Svalbard are home to a big variety of marine life, offering the chance of thrilling wildlife encounters during your cruise. Following AECO guidelines, we'll keep a safe distance to ensure we don't disturb the animals in their natural habitat. For example, we'll stay at least 300 meters from polar bears, allowing you to enjoy the incredible wildlife responsibly and respectfully. Your safety and the well-being of the wildlife are our top priorities.

- **Polar bears:** Often called the "King of the Arctic", polar bears are the most iconic wildlife you can encounter. While they primarily live on the sea ice, they are excellent swimmers and are sometimes spotted hunting seals in the water or resting on ice floes.

- **Walruses:** Known for their large tusks and social behaviour, walruses are a common sight. They can be seen lounging on ice or rocky shores, especially around Moffen Island.

- **Whales:** Several species of whales frequent the waters around Svalbard, including blue whale, fin whale, humpback whale, minke whale, beluga whale. These gentle giants are often seen feeding in the fjords, creating unforgettable moments.

- **Seals:** The Arctic is home to several species of seals, including the bearded seal, harp seal, hooded seal and ringed seal. These animals are often seen resting on ice or swimming gracefully in the cold waters.

- **Arctic birds:** The region is a paradise for birdwatchers, with species such as the Arctic tern, puffin, little auk, and black-legged kittiwake nesting on the cliffs. During the summer months, the skies are filled with these birds as they migrate to the Arctic to breed.

## Wildlife and Flora on Land

On land, Svalbard's harsh climate and unique ecosystem support a surprising variety of flora and fauna:

- **Svalbard reindeer:** This small, hardy species of reindeer is well-adapted to the Arctic environment. They can often be seen grazing on the sparse vegetation. They roam freely around Longyearbyen and are quite curious.

- **Arctic fox:** A master of camouflage, the Arctic fox is one of Svalbard's most charming residents. They are often spotted on the tundra, their white coats blending perfectly with the snow in winter and turning brown in the summer.

- **Svalbard rock ptarmigan:** The only bird species that remains in Svalbard year-round, the Svalbard rock ptarmigan changes its plumage with the seasons to blend into its environment. It's a common sight in the valleys and mountain slopes.

- **Flora:** Despite the extreme conditions, Svalbard's tundra is home to over 170 species of plants. The short summer brings a burst of color to the landscape with purple saxifrage, Arctic poppies, and tufted saxifrage blooming across the rocky terrain. These resilient plants are a vital part of the ecosystem, providing food for herbivores like the Svalbard reindeer.







## Why Stay in Longyearbyen?

- **Exciting land-based activities:** Longyearbyen is a hub of Arctic adventure, and Hurtigruten Svalbard offers a wide range of thrilling activities. Whether you're interested in dog sledding, hiking, ATV, biking or fossil hunting - there's no shortage of excitement in this remote town.
- **Culinary Delights:** Longyearbyen boasts a surprising number of high-quality restaurants and cafes, including the renowned Huset Restaurant. Known for its fine dining and extensive wine cellar, Huset offers a culinary experience that rivals the best in the world, all in the heart of the Arctic.
- **Cultural Exploration:** Dive into Svalbard's fascinating history with visits to two must-see museums: the Svalbard Museum, where you can learn about the archipelago's geology, wildlife, and human history, and the North Pole Expedition Museum, which houses artifacts from historic Arctic expeditions.

### Exceptional Accommodation:

Hurtigruten Svalbard offers three distinct hotels to suit every traveler's needs:

- **Radisson Blu Polar Hotel Spitsbergen:** The world's northernmost full-service hotel, offering stunning views of the surrounding wilderness.
- **Funken Lodge:** A boutique hotel that combines modern amenities with a historic ambiance, providing a cosy and luxurious retreat for those who want the little extra. Enjoy amazing food in Funktionærmessen Restaurant with a fantastic view of Longyearbyen.
- **Coal Miners' Cabins:** For a more rustic, yet comfortable stay, these cabins echo the town's mining past and are perfect for the adventurous spirit.

Breakfast is always included with your stay at our hotels.

Staying in Longyearbyen before or after your cruise allows you to fully immerse yourself in the unique culture and landscape of Svalbard. Whether you're indulging in activities, enjoying gourmet cuisine, exploring Arctic history, or simply soaking in the breathtaking views, Longyearbyen is the ultimate addition to your Arctic journey.

# COMBINE THE SVALBARD ADVENTURE MINI CRUISE WITH A STAY IN LONGYEARBYEN FOR THE ULTIMATE SVALBARD EXPERIENCE

The mini cruise perfectly pairs with a stay in Longyearbyen, for guests to experience the unique town at the top of the world. We offer two advertised packages including a short stay in Longyearbyen as part of the tour, or we can tailor itineraries perfectly suited to your clients needs including accommodation, transfers, activities and food and beverage experiences.

### What's Included:

**Accommodation and Transfers:** One-night stay in Longyearbyen before your voyage (and after your voyage on the Sunday to Friday package), with transfers to and from the airport, hotel, and ship.

**Food and Drink:** Full board as per the programme (breakfast, lunch, and dinner) with complimentary tea and coffee.

**Activities:** A three-hour sightseeing tour in Longyearbyen including entrance to Svalbard Museum and a visit to Camp Barentz, guided landings with small expedition boats during the voyage, onboard lectures, and informal gatherings.

**Expedition Team:** Local expert guides fluent in English, German, Norwegian and French, ensuring an informative and enjoyable trip.

**Equipment:** Loan of trekking poles and thermal suits for activities onboard.

### Activities:

- Guided landings with small expedition boats depending on the weather and ice conditions.
- Informal gatherings for daily recaps and preparation for the day ahead.
- Trekking and wildlife spotting, including possible sightings of seals, reindeer, polar bears and walrus.

1 night in Longyearbyen & 4 nights onboard

## Tentative itinerary 1:

Advertised package – Wednesday to Monday

### Day 1: Mining History and Arctic Nature

**Location:** Longyearbyen

**Summary:** Arrival in Longyearbyen, explore the town, visit the North Pole Expedition Museum, and enjoy a light dinner at your hotel restaurant. Overnight stay at either Radisson Blu Polar Hotel or Funken Lodge, depending on your cabin category.

### Day 2: Settlements of the Far North

**Location:** Longyearbyen and Isfjorden

**Summary:** Morning at leisure in Longyearbyen, guided tour including the Svalbard Museum and Camp Barentz. Embark on the MS Serenissima and sail through Isfjorden, observing Arctic wildlife and historical sites. A two-course lunch at the hotel is included.

### Day 3: Into the Arctic Wilderness

**Location:** Magdalenefjorden and the North West Corner

**Summary:** Enter remote Arctic areas with no communication signals, explore Magdalenefjorden's Alpine-like scenery, historical whaling sites, and rich birdlife. Potential landing depending on weather and ice conditions.

### Day 4: Scanning for Polar Bears

**Location:** Woodfjorden, Liefdefjorden, Mofen, and 80° North

**Summary:** Explore the diverse landscapes of Woodfjorden, Liefdefjorden, and scan for polar bears and other wildlife. If conditions allow, sail above 80° North and approach Mofen Island, known for its walrus population.

### Day 5: Fjords, Glaciers, and Research

**Location:** Kongsfjorden and Ny-Ålesund

**Summary:** Discover the scenic Kongsfjorden, hike on the tundra, and visit the research settlement of Ny-Ålesund. Learn about Arctic exploration history and send a postcard from the northernmost post office in the world. Upon arrival in Ny-Ålesund, the ship will dock at the pier, and passengers can disembark directly from the ship onto the land.

### Day 6: Flying Home from the Arctic

**Location:** Longyearbyen

**Summary:** Departure day, with a transfer from the ship to the airport for your flight home. Last opportunity to explore Longyearbyen and purchase souvenirs before leaving.



2 nights in Longyearbyen & 3 nights onboard

## Tentative itinerary 2:

Advertised package – Sunday to Friday

### Day 1: On the Edge of Wilderness

**Location:** Longyearbyen

**Summary:** Arrival in Longyearbyen. Explore the town, and enjoy a light dinner at a local restaurant. Overnight stay at either Radisson Blu Polar Hotel or Funken Lodge, depending on your preference.

### Day 2: Settlements of the Far North

**Location:** Longyearbyen and Isfjorden

**Summary:** Morning at leisure in Longyearbyen followed by a guided tour, including visits to the Svalbard Museum and Camp Barentz. Embark on the MS Serenissima and sail through Isfjorden, observing Arctic wildlife and historical sites.

### Day 3: Chances of Seeing Polar Bears

**Location:** Magdalenefjorden, North West Corner, Mofen, and 80° North

**Summary:** Enter remote Arctic areas with opportunities to see polar bears, explore Magdalenefjorden with its historical whaling sites, and possibly sail above 80° North near Mofen Island, known for its walrus population.

### Day 4: Fjords, Glaciers, and Research

**Location:** Explore the scenic Kongsfjorden, home to glaciers and rich birdlife, followed by a visit to the research settlement of Ny-Ålesund, where you can learn about Arctic exploration history and send a postcard from the northernmost post office. Upon arrival in Ny-Ålesund, the ship will dock at the pier, and passengers can disembark directly from the ship onto the land.

### Day 5: Cruising into the Isfjorden

**Location:** Isfjorden and Longyearbyen

**Summary:** Sail through Isfjorden, observing its wildlife and geology. Return to Longyearbyen, with time to explore the town's unique northernmost establishments. A light lunch at the hotel is included, along with dinner in the evening.

### Day 6: Say Goodbye to the Arctic

**Location:** Longyearbyen

**Summary:** Departure day, with a transfer from the hotel to the airport, marking the end of the Arctic adventure.





# EXCURSIONS - POLAR SUMMER SEASON

For guests extending their stay, we offer a wide range of exciting activities in and around Longyearbyen, all of which can be conveniently booked through the Hurtigruten Svalbard sales team.

MID MAY - MID AUG

## TO THE PUFFINS

### ISFJORD SAFARI

**Duration:** 4 hours  
**Minimum age:** 8  
**Degree of difficulty:** 3 - Average physical fitness

Join us on a Puffin safari on Isfjorden with an open, steady Polarcirkel boat. The trip takes us east, into the massive fjord, towards Diabas and the unique geology that creates the perfect home for our summer guests. In this small cliff we can find approximately 100 breeding pairs of Atlantic Puffins and also some of Brünnich's Guillemot. Here we will experience a rich bird life up close from the water.



Polarcirkel

15 JUN - 30 SEP

## ARCTIC CHALLENGE

### KAYAK- AND HIKE

**Duration:** 11 hours  
**Minimum age:** 18  
**Degree of difficulty:** 5 - Exceptional physical fitness

We start the tour by packing our hiking shoes in the kayaks, to then paddle about 3 km over to Hiorthamn. There we begin the beautiful hike up Hiortfjellet. On our way up, we will pass former miners' homes and facilities from the time when the mine in the mountain was in operation. The tour offers a lovely mixture of history and nature.



Kayak

MID AUG - 30 SEP

## A TASTE OF SVALBARD

### ISFJORD SAFARI

**Duration:** 4 hours  
**Minimum age:** 8  
**Degree of difficulty:** 3 - Average physical fitness

Join us on a tour on Isfjorden with an open, steady Polarcirkel boat. This tour takes you on a journey through the fascinating history of Svalbard and Spitsbergen. The guide will decide the exact route according to the weather conditions. We visit places with cultural monuments that may have history from both Norwegian and Soviet mining operations.



Polarcirkel

MID MAY - 30 SEP

## SIGHTSEEING

### WITH ELECTRIC BIKE

**Duration:** 3 hours  
**Minimum age:** 14  
**Degree of difficulty:** 3 - Average physical fitness

Electric bicycles are the perfect way to explore Longyearbyen, riding along the roads and tracks around the town. This is a comfortable and fun way to experience the Arctic, getting close to nature and see the highlights of Longyearbyen. On this tour we will make a stop by one of the famous polar bear signs, so remember to bring your camera to get the classic Svalbard holiday memory.



Electric bike

END OF AUG - 15 OCT

## SEA FISHING IN THE ARCTIC

### ISFJORD SAFARI

**Duration:** 4 hours  
**Minimum age:** 8  
**Degree of difficulty:** 3 - Average physical fitness

Over the last few years the Isfjord near Longyearbyen has been teeming with cod in the late summer and autumn, and a fishing tour is fun for all. You don't need a hunter's licence or special permissions, just a good dose of luck! This tour takes place in our sturdy boats, and the guide will provide you with all necessary equipment, including fishing rods and a floatation suit.



Polarcirkel

11 JUN - 1 NOV

## DOG SLEDDING

### ON WHEELS

**Duration:** 4 hours  
**Minimum age:** 6  
**Degree of difficulty:** 3 - Average physical fitness

Many associate dog sledding with winter and freezing temperatures, but the dogs need exercise during the summer months too, and our custom-built dog sled on wheels is a perfect way for both two- and fourlegged to get out and enjoy the beautiful Svalbard scenery. The tour goes by the road in Adventdalen. You will be surrounded by beautiful mountains and maybe you will spot some reindeers.



Dog sledding

15 MAR - 30 SEP

## WILDERNESS EVENING

### AT CAMP BARENTZ

**Duration:** 3 hours  
**Minimum age:** 8  
**Degree of difficulty:** 2 - Suitable for most

Join us for a special evening at our wilderness camp. Camp Barentz boasts an amazing location at the foot of the mountain, Breinosa in Adventdalen. Good drinks and a delicious homemade reindeer bidos will be served, together with campfire coffee and dessert. A real Svalbard meal. Enjoy the crackling fire and a lecture about the polar bear.



Camp Barentz

26 MAY - 1 OCT

## DOG SLEDDING

### BY THE SEA

**Duration:** 3 hours  
**Minimum age:** 2  
**Degree of difficulty:** 2 - Suitable for most

Enjoy the beautiful coastal scenery whilst the guide drives the big wagon, seating up to 8 guests and pulled by a large team of strong sled dogs. On this tour you should keep your eyes open - wildlife is often seen in this area! If you are lucky you may spot Svalbard reindeer, polar foxes, Svalbard grouse, seals and maybe even a walrus or whales.



Dog sledding



# EXCURSIONS - POLAR SUMMER SEASON

START JUN - 30 SEP

## HIKE TO SARKOFAGEN

HIKE

**Duration:** 5 hours  
**Minimum age:** 14  
**Degree of difficulty:** 4 - Demands good physical fitness

The hike begins in Nybyen, with a beautiful varied route taking us through the valley, up and across the glacier, and along a stony ridge to Sarkofagen. If we are lucky, we might find a fossil on our way! The glacier crossing is a simple one. The guide will go first and lead the way and you can concentrate on enjoying the spectacular views. From the summit you get a beautiful view over Longyearbyen.



Hike

MID MAY - END AUG

## HIKE FROM SEA TO SUMMIT

HIKE

**Duration:** 7 hours  
**Minimum age:** 14  
**Degree of difficulty:** 4 - Demands good physical fitness

This challenging but rewarding hike offers a different view of the landscape to those experienced from Longyearbyen. The group will jump aboard a boat for a 10 minute crossing to our starting point of Revneset. Then we hike through the valley to the top of Forkastningsfjellet for spectacular views. This is a reasonably demanding hike which covers about 10 kilometres with 400m of elevation.



Hike

11 JUN - 1 NOV

## FOSSIL HUNTING

TO LONGYEARBREEN

**Duration:** 3 hours  
**Minimum age:** 6  
**Degree of difficulty:** 2 - Suitable for most

Join us on the hunt for the most unique Svalbard souvenirs! Hidden in the moraine near Longyearbreen we can find 60 million year old fossils. The path we follow and area we explore varies each year as the glacier moraine moves with the changing seasons. It is a quite stony and uneven terrain, but the pace is kept at an easy level so we have plenty of time to look for fossils.



Hike

1 JUL - 31 AUG

## HIKE TO FOXFONNA

HIKE WITH GREEN DOG

**Duration:** 6 hours  
**Minimum age:** 10  
**Degree of difficulty:** 4 - Demands good physical fitness

This tour starts at Gruve 7 (Mine 7). We start out at about 400m above sea level, where the views are already fantastic. This tour takes you along the glacier, Foxfonnbreen, towards Foxdalen, where we will arrive at an old hunters cabin - a perfect place for an expedition lunch. After a tasty warm meal and hot drinks, we will continue on foot towards Adventdalen and Camp Barentz, where the hike will come to an end.



Hike





# WHY CHOOSE HURTIGRUTEN SVALBARD AS YOUR PARTNER?

---

**Unmatched Expertise:** As Svalbard's oldest tour operator, Hurtigruten Svalbard offers unparalleled knowledge and experience in Arctic adventures. Our certified local guides from Svalbard have the highest level of experience and safety training and are truly passionate about the region - ensuring your journey is both safe and deeply enriching.

**Authentic Arctic Experiences:** We provide a diverse range of immersive activities, each designed to showcase the true essence of Svalbard's breathtaking wilderness and rich history. At Hurtigruten Svalbard, we have experiences for all types of explorers, no matter your preferences. Whether you're seeking adventure, relaxation, or something in between, we can tailor a completely customised proposal just for you. Contact us, and we'll make sure your Svalbard journey is exactly what you dream of.

**Commitment to Sustainability:** At Hurtigruten Svalbard, we prioritise sustainability in all our operations, using eco-friendly practices and supporting the local community. Explore the Arctic with us, knowing that your adventure respects and preserves this unique environment.



## Booking

To book the packages or to request an adventure tailored to your clients' needs, please contact the Hurtigruten Svalbard sales team.

For FIT bookings (fewer than 10 passengers):  
Email [info@hurtigrutensvalbard.com](mailto:info@hurtigrutensvalbard.com)

For Group bookings (10 passengers or more):  
Email [gruppe@hurtigrutensvalbard.com](mailto:gruppe@hurtigrutensvalbard.com)