

WoodsideHomes.com

Let's get you home.

Bayview At Shoreline

LINDEN



Traditional (A)



Farmhouse (B)

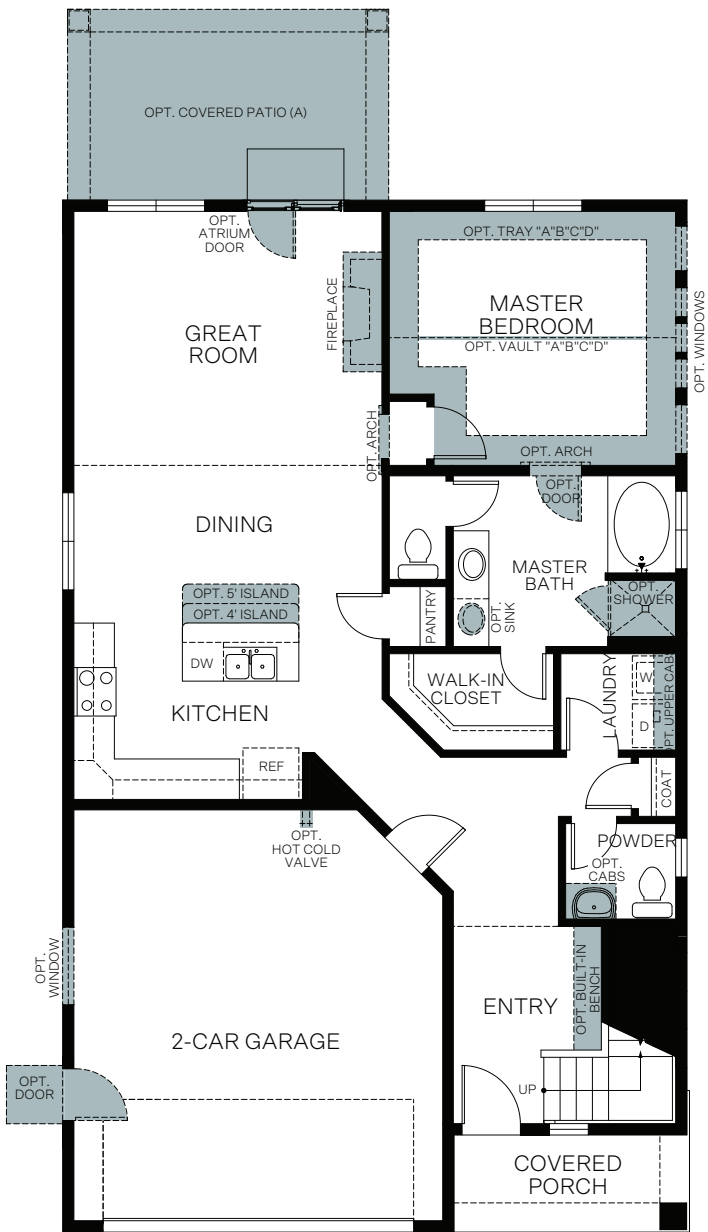


Craftsman (C)

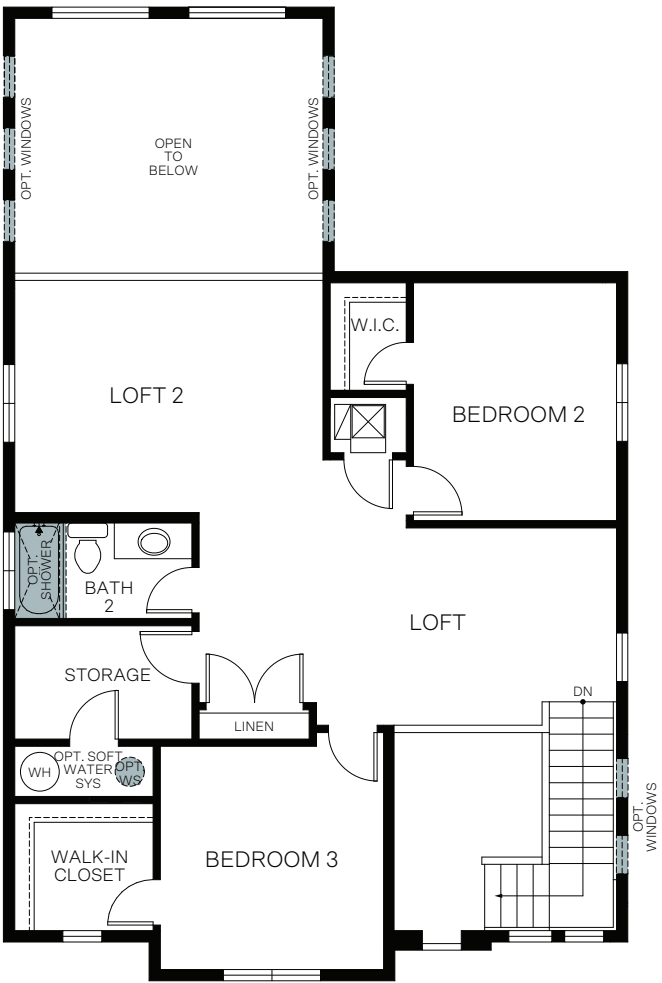


Prairie (D)

TWO-STORY 2,209 SQ. FT.



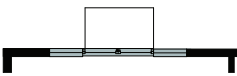
FIRST FLOOR
1,219 Sq. Ft.



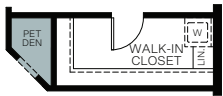
SECOND FLOOR
990 Sq. Ft.



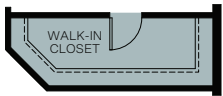
OPT. TRANSOM WINDOW PACKAGE



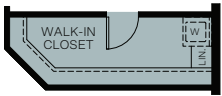
OPT. 10' SLIDER



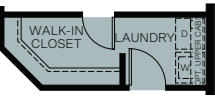
OPT. PET DEN



OPT. EXTENDED WALK-IN CLOSET



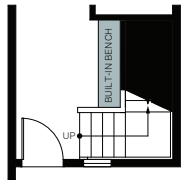
OPT. EXTENDED WALK-IN CLOSET W/ LAUNDRY SPACE



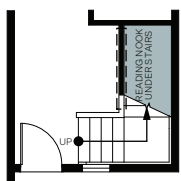
OPT. PASS THROUGH TO LAUNDRY



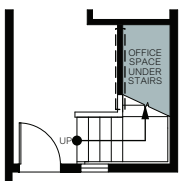
OPT. LAUNDRY 2



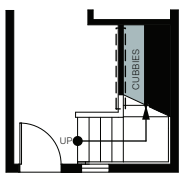
OPT. BUILT-IN BENCH AT STAIRS



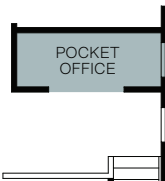
OPT. READING NOOK AT STAIRS



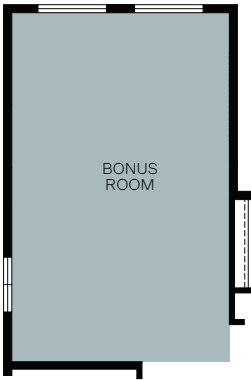
OPT. OFFICE SPACE AT STAIRS



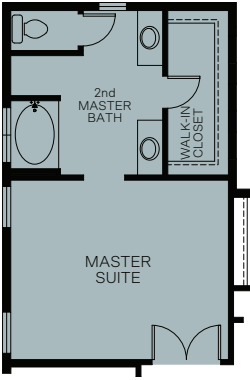
OPT. CUBBIES AT STAIRS



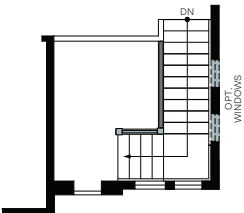
OPT. POCKET OFFICE



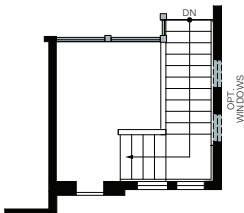
OPT. BONUS ROOM
Adds: 225 Sq.Ft



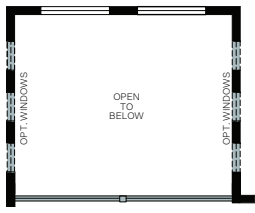
OPT. MASTER SUITE
Adds: 225 Sq.Ft



OPT. RAILING 1



OPT. RAILING 2



OPT. RAILING 3



OPT. BEDROOM 4
Adds: 225 Sq.Ft



OPT. BEDROOM 6
Adds: 225 Sq.Ft



OPT. MASTER SUITE 2
Adds: 225 Sq.Ft