

## Hampton Estate

Two-story • 2,451 Finished Sq. Ft. • 3-6 Bedrooms • 2.5-3 Baths • Volume Great Room • Living Room • Dining Room  
Opt. Extended Great Room • Loft • Opt. Upper level Bonus Room • Opt. Bedroom 4 & 5 • 2 Car Tandem Garage



Traditional (A)



Farmhouse (B)



Craftsman (C)



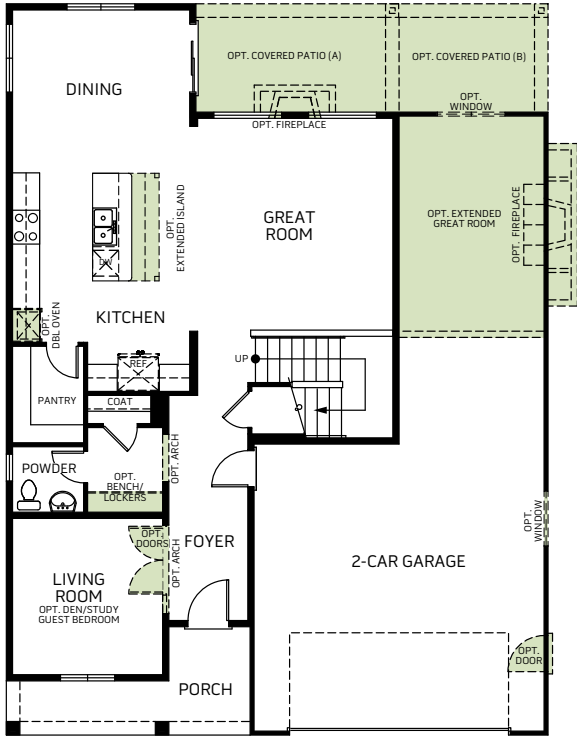
Prairie (D)

Woodside Homes reserves the right to change elevations, specifications, materials and prices without notice. All square footages are approximate. Window location, porches, ceiling heights and room dimensions vary per elevation. The availability of certain options is subject to construction status and schedule. Optional features may be predetermined and included at additional cost on select homes. Renderings are artist's conception only.

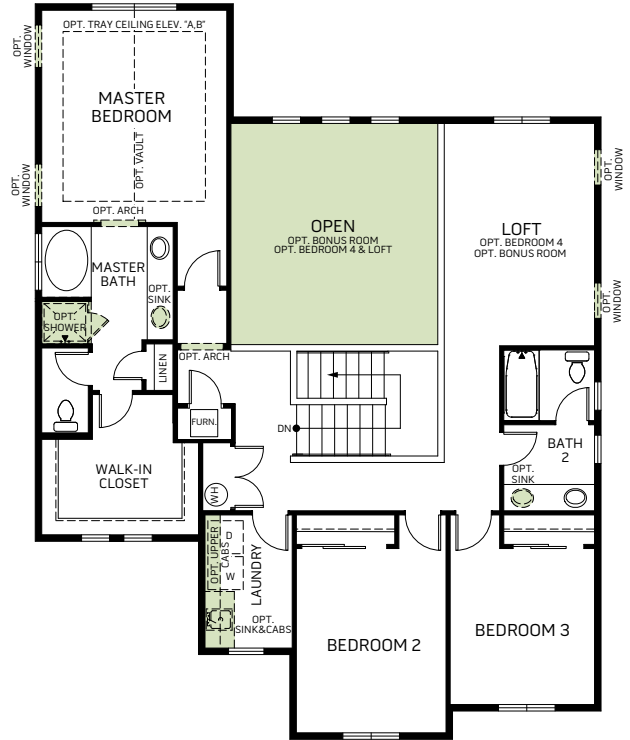


**Hampton Estate**

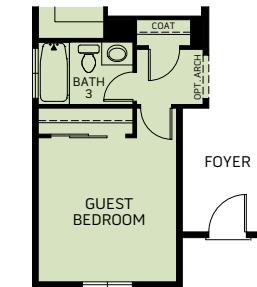
Two-story • 2,451 Finished Sq. Ft. • 3-6 Bedrooms • 2.5-3 Baths • Volume Great Room • Living Room • Dining Room • Opt. Extended Great Room • Loft • Opt. Upper level Bonus Room • Opt. Bedroom 4 & 5 • 2 Car Tandem Garage



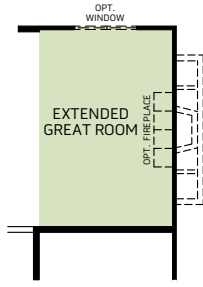
FIRST FLOOR  
1,118 Sq. Ft.



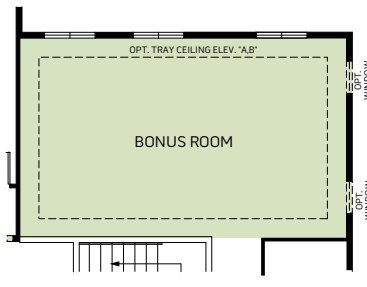
SECOND FLOOR  
1,333 Sq. Ft.



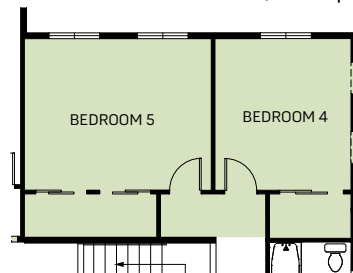
OPT. GUEST BEDROOM & FULL BATH



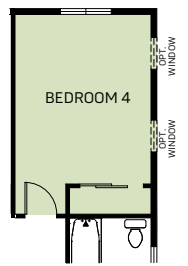
OPT. EXTENDED GREAT ROOM  
Adds: 183 Sq. Ft.



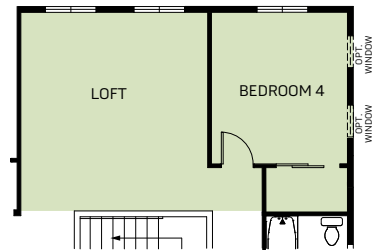
OPT. BONUS ROOM  
Adds: 238 Sq. Ft.



OPT. BEDROOM 4 & 5  
Adds: 238 Sq. Ft.



OPT. BEDROOM 4



OPT. LOFT  
Adds: 238 Sq. Ft.

Woodside Homes reserves the right to change elevations, specifications, materials and prices without notice. All square footages are approximate. Window location, porches, ceiling heights and room dimensions vary per elevation. The availability of certain options is subject to construction status and schedule. Optional features may be predetermined and included at additional cost on select homes. Renderings are artist's conception only.

