

## Ironwood / 4021 (Preliminary)

Single-Story • 2,241 Sq. Ft. • 3 Bedrooms • 2.5 Baths • Great Room • Kitchen with Island • Morning Kitchen • Walk-In Pantry • Laundry • Owner's Entry • Covered Patio • 2-Bay Garage



**Ranch (A)**



**Prairie (B)**

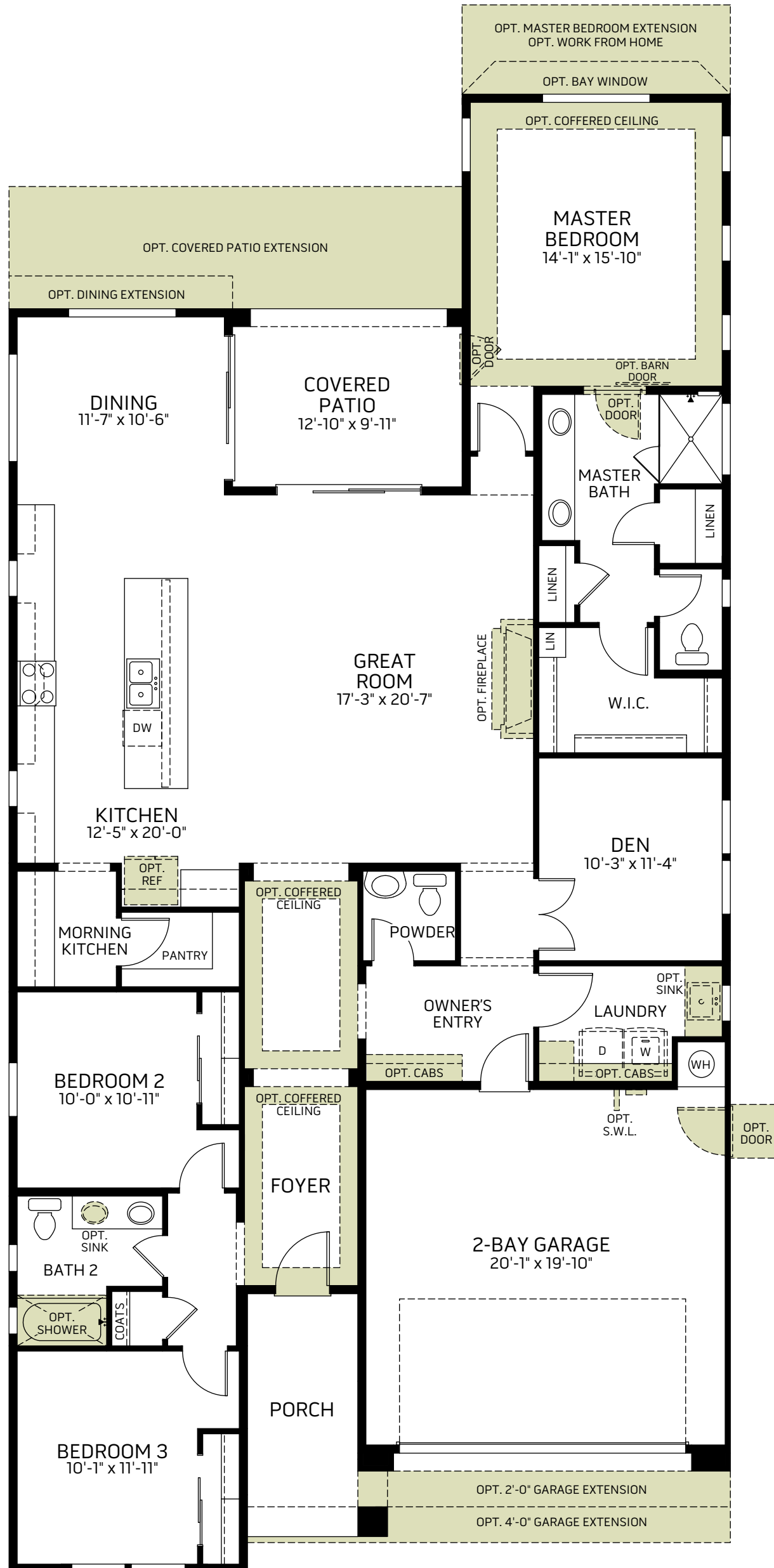


**Farmhouse (C)**

Woodside Homes reserves the right to change floor plans, maps, prices, and specifications without notice. Prices are subject to change without notice. The model information listed, including availability, floor plans, elevations, features, and other information are subject to change. Model home interior decorating, landscaping, fencing, and other amenities are for display purposes only. All renderings, floor plans, and maps are artist conceptions and are not intended to be an actual depiction of the buildings, fencing, driveways, or landscaping. Optional features may be included at additional cost and are subject to construction cut-off dates. All square foot measurements, elevations, features, and floor plans are approximate. This advertisement is for illustration purposes only and not part of a legal contract. Please see Sales Representative for full details, and additional information about options shown dashed on base floor plan. Woodside Homes Sales AZ, LLC. 10/2021



**Ironwood / 4021 (Preliminary)**



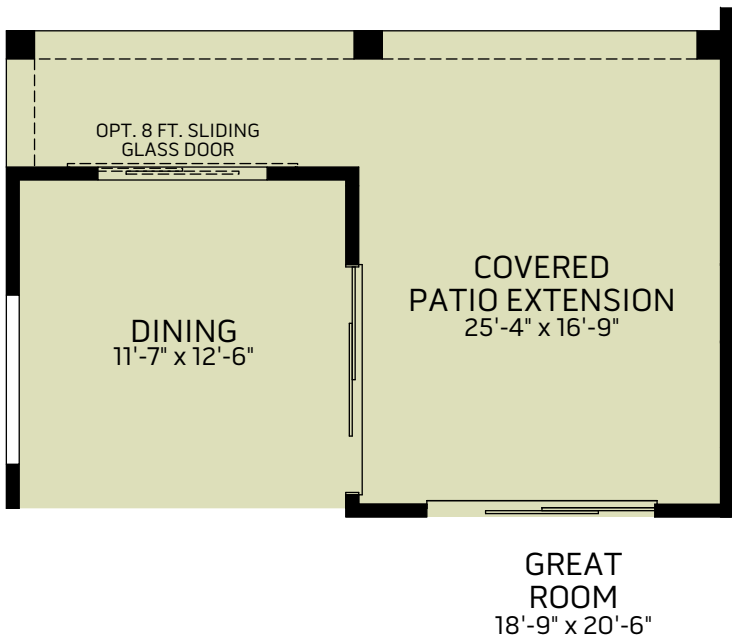
**FLOOR PLAN**

Woodside Homes reserves the right to change floor plans, maps, prices, and specifications without notice. Prices are subject to change without notice. The model information listed, including availability, floor plans, elevations, features, and other information are subject to change. Model home interior decorating, landscaping, fencing, and other amenities are for display purposes only. All renderings, floor plans, and maps are artist conceptions and are not intended to be an actual depiction of the buildings, fencing, driveways, or landscaping. Optional features may be included at additional cost and are subject to construction cut-off dates. All square foot measurements, elevations, features, and floor plans are approximate. This advertisement is for illustration purposes only and not part of a legal contract. Please see Sales Representative for full details, and additional information about options shown dashed on base floor plan. Woodside Homes Sales AZ, LLC. 10/2021

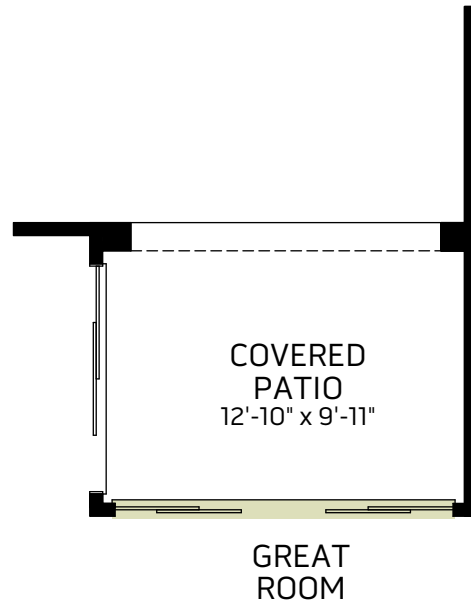


**Ironwood / 4021 (Preliminary)**

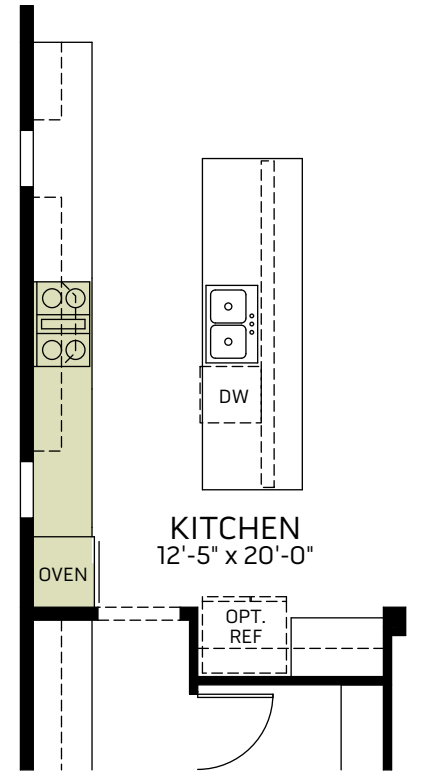
**OPTIONS**



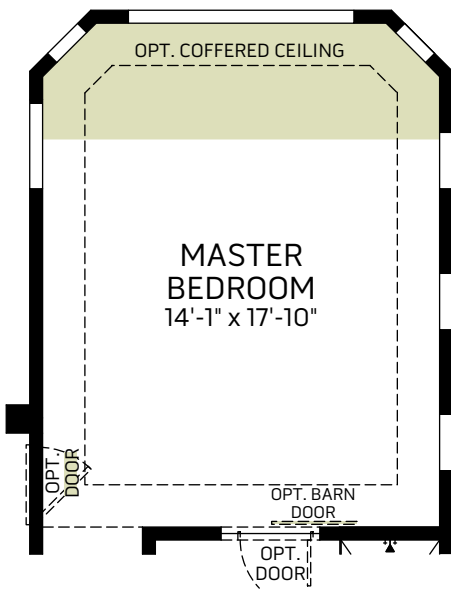
**OPTIONAL COVERED PATIO EXTENSION WITH DINING EXTENSION**  
(8 FT. SLIDING GLASS DOOR AT DINING ONLY AVAILABLE WITH COVERED PATIO EXTENSION)



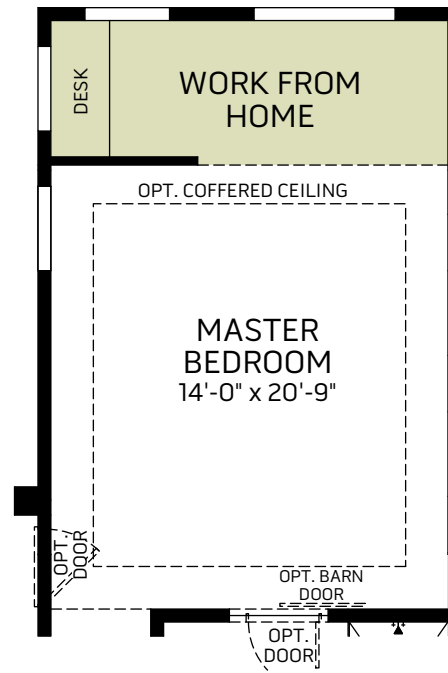
**OPTIONAL 12 FT. CENTER SLIDING GLASS DOOR AT GREAT ROOM**



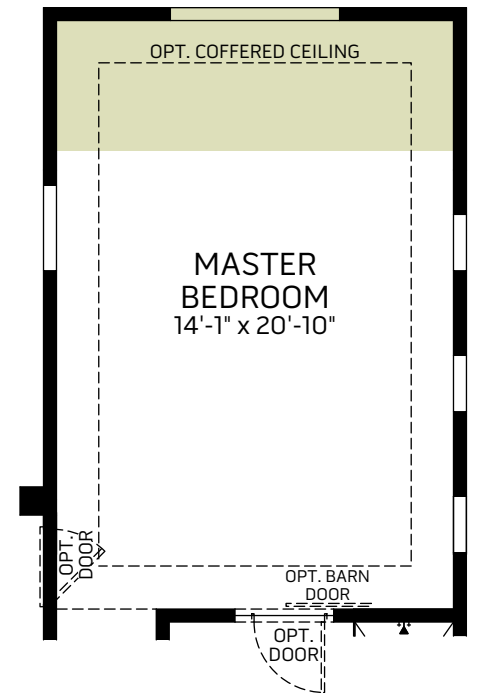
**OPTIONAL KITCHEN APPLIANCE LAYOUT**



**OPTIONAL BAY WINDOW AT MASTER BEDROOM**  
(NOT AVAILABLE WITH MASTER BEDROOM EXTENSION OR WORK FROM HOME AT MASTER BEDROOM)



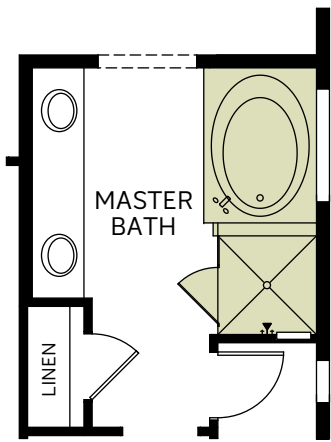
**OPTIONAL WORK FROM HOME AT MASTER BEDROOM**  
(NOT AVAILABLE WITH MASTER BEDROOM EXTENSION OR BAY WINDOW)



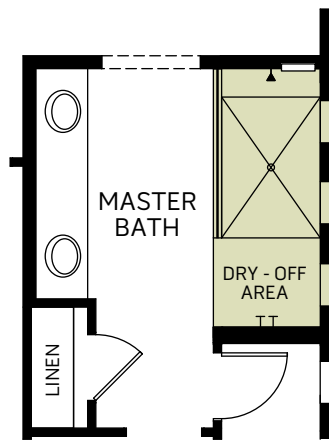
**OPTIONAL MASTER BEDROOM EXTENSION**  
(NOT AVAILABLE WITH BAY WINDOW OR WORK FROM HOME AT MASTER BEDROOM)

**Ironwood / 4021 (Preliminary)**

**OPTIONS**



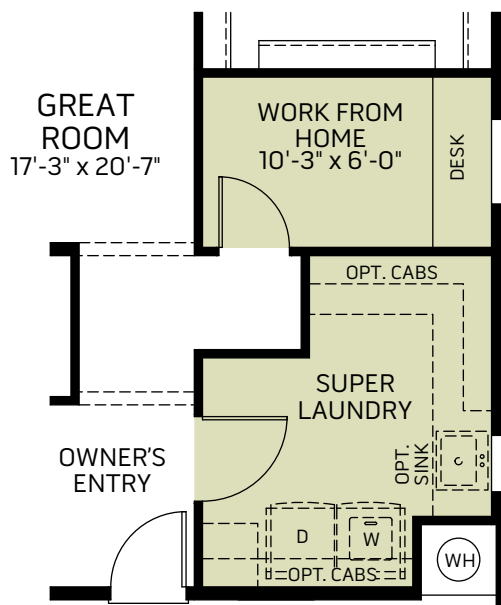
OPTIONAL SEPARATE TUB/SHOWER AT MASTER BATHROOM



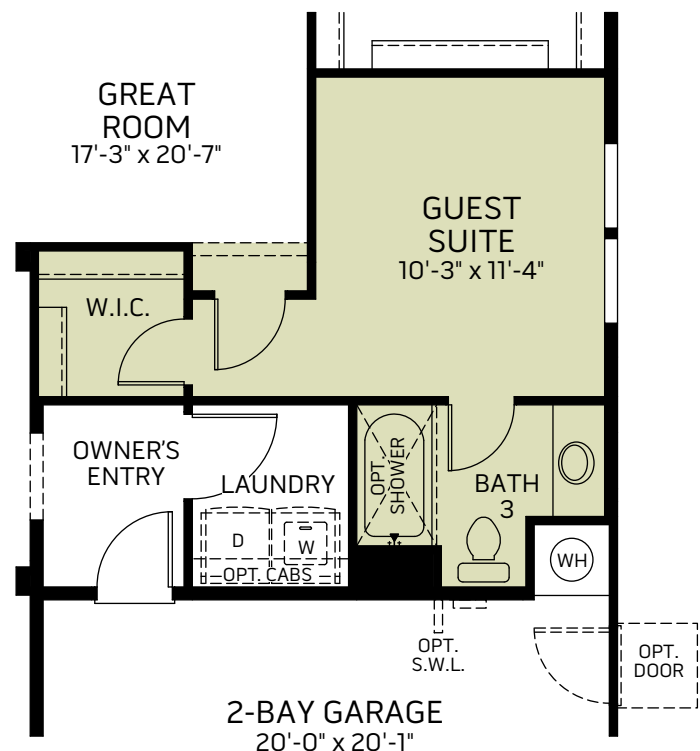
OPTIONAL EXTENDED SHOWER WITH FULL GLASS AT MASTER BATHROOM



OPTIONAL EXTENDED SHOWER WITH HALF WALL AT MASTER BATHROOM



OPTIONAL SUPER LAUNDRY WITH WORK FROM HOME (NOT AVAILABLE WITH GUEST SUITE)



OPTIONAL GUEST SUITE (NOT AVAILABLE WITH SUPER LAUNDRY WITH WORK FROM HOME)