

# The Trails

## Zephyr



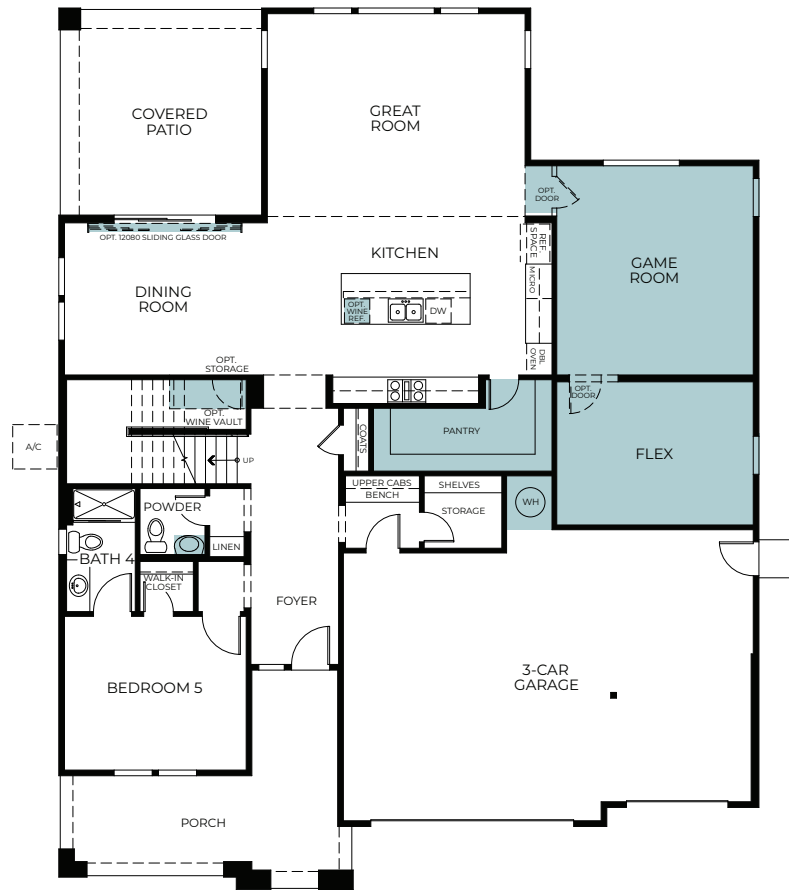
Two Story 3,952 Sq. Ft.



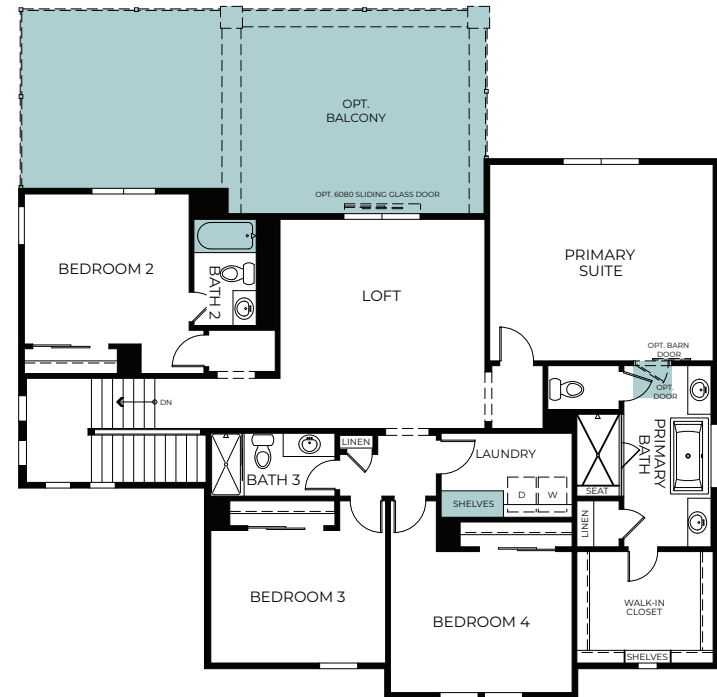
# ZEPHYR

TWO STORY

3,952 Finished Sq. Ft. • 5-7 Bedrooms • 4.5-6.5 Baths



FIRST FLOOR



SECOND FLOOR



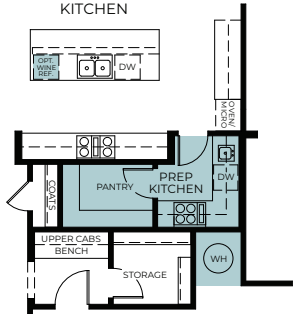
Woodside Homes reserves the right to change floor plans, features, elevations, prices, materials and specifications without notice. All square footages and measurements are approximate. Please see Sales Professional for full details. 07/2023



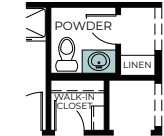
# ZEPHYR - OPTIONS

TWO STORY

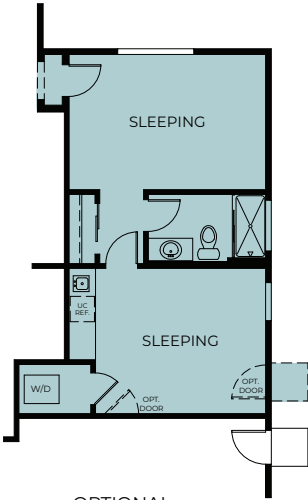
3,952 Finished Sq. Ft. • 5-7 Bedrooms • 4.5-6.5 Baths



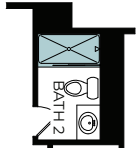
OPTIONAL  
PREP KITCHEN & PANTRY



OPTIONAL  
VANITY AT POWDER



OPTIONAL  
HOME + ILO GAME  
ROOM AND MEDIA



OPTIONAL  
BATH 2 SHOWER  
ILO TUB



OPTIONAL  
UPPER AND LOWER CABS



OPTIONAL  
SINK AND CABINETS



Woodside Homes reserves the right to change floor plans, features, elevations, prices, materials and specifications without notice. All square footages and measurements are approximate. Please see Sales Professional for full details. 07/2023

