

WoodsideHomes.com

Let's get you home.

Bayview At Shoreline

CEDAR



Traditional (A)



Farmhouse (B)

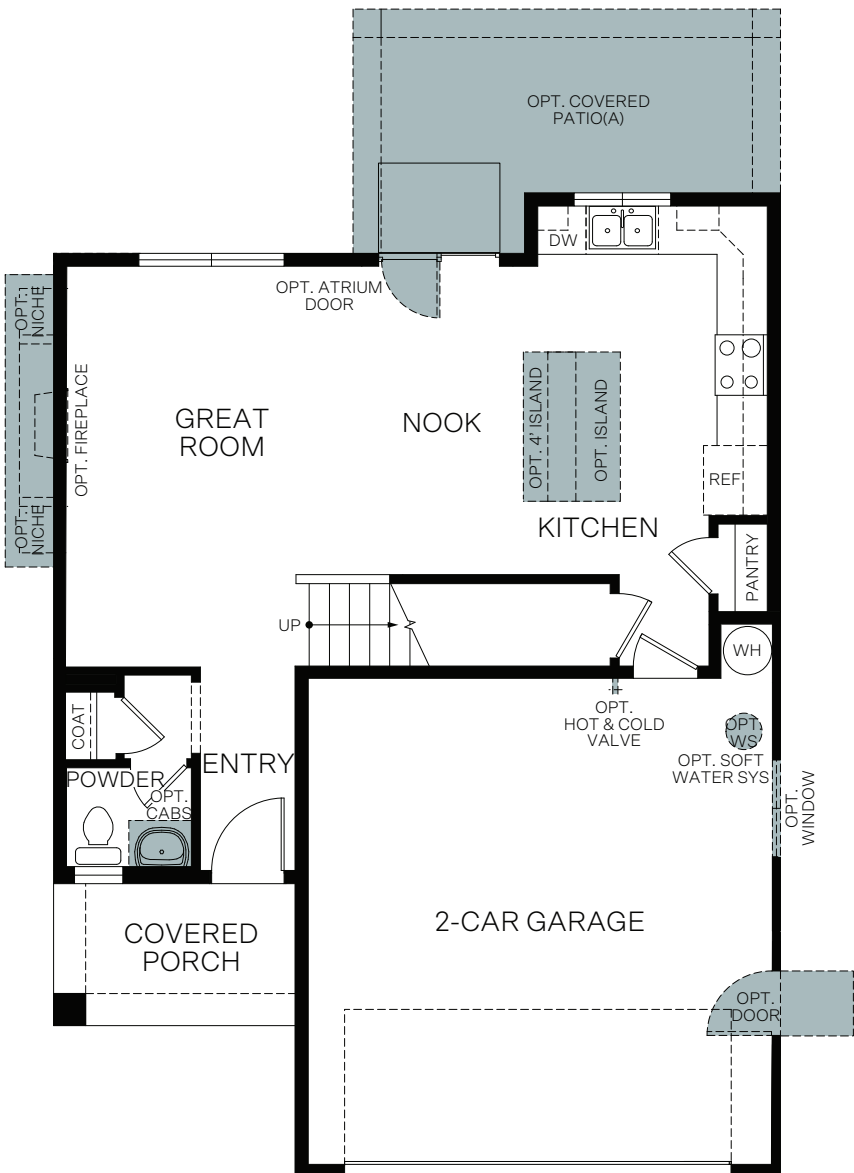


Craftsman (C)

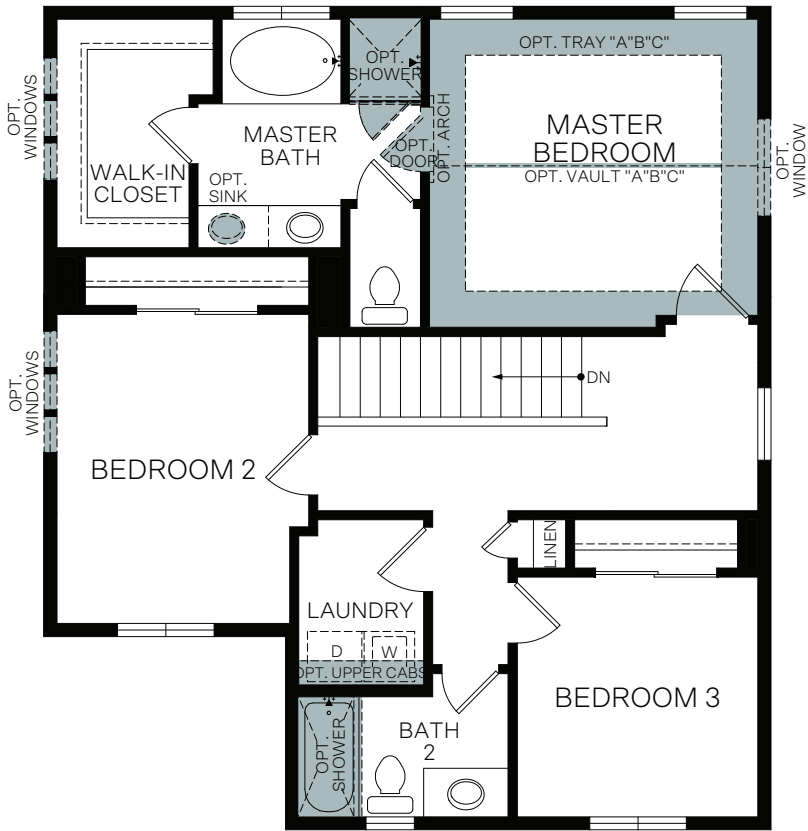


Prairie (D)

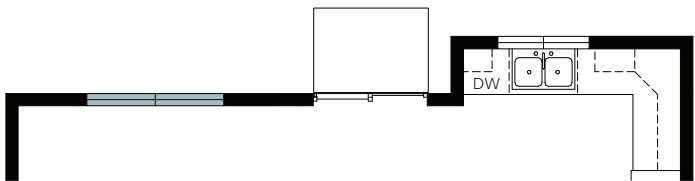
TWO-STORY 1,529 SQ. FT.



FIRST FLOOR
629 Sq. Ft.



SECOND FLOOR
900 Sq. Ft.



OPT. TRANSOM WINDOW PACKAGE



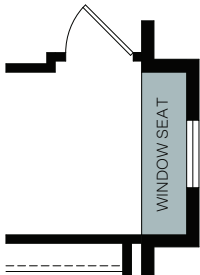
OPT. PET DEN



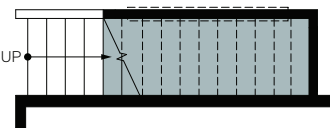
OPT. CHARGING STATION



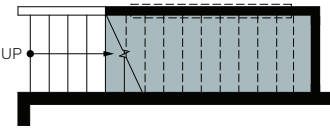
OPT. CHARGING STATION
WITH SHELVES



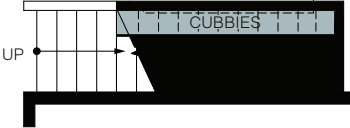
OPT. WINDOW SEAT
Adds: 16 Sq. Ft.



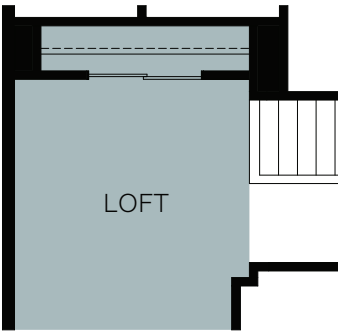
OPT. OFFICE SPACE
AT STAIRS



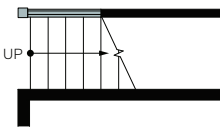
OPT. READING NOOK
AT STAIRS



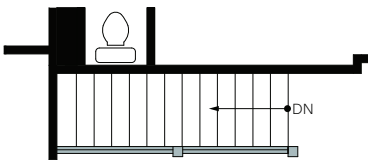
OPT. CUBBIES AT STAIRS



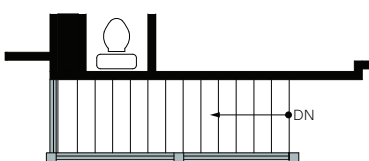
OPT. LOFT



OPT. RAILING 1



OPT. RAILING 2



OPT. RAILING 3