

Amesbury

Two-story • 1,732 Finished Sq. Ft. • 2,674 Total Sq. Ft. • 3-5 Bedrooms • 2.5-3.5 Baths • Open Great Room • Opt. Covered Patio • Opt. Bonus Room • Opt. Loft & Bedroom 4 • 2 Car Garage



Traditional (A)



Farmhouse (B)



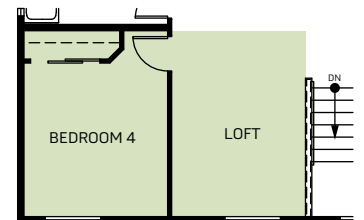
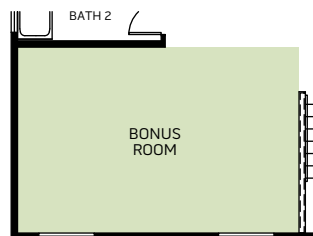
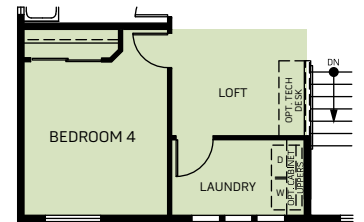
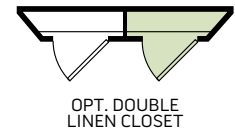
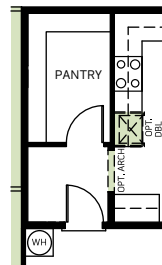
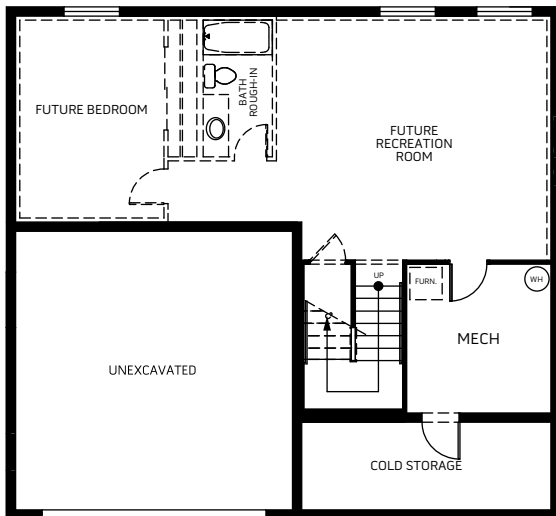
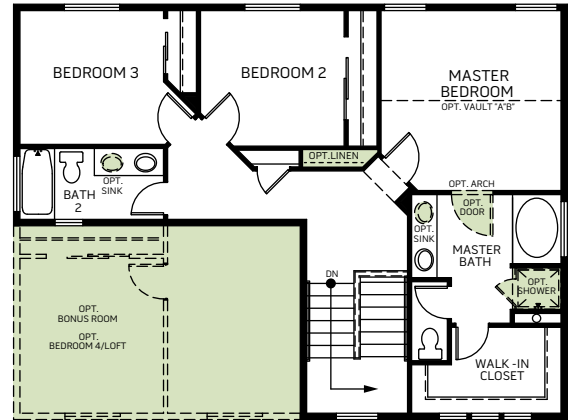
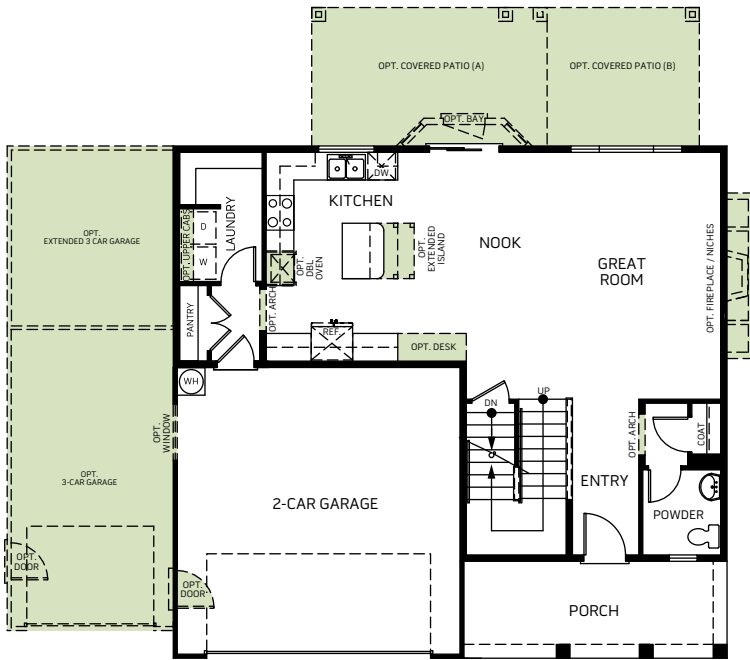
Prairie (D)

Woodside Homes reserves the right to change elevations, specifications, materials and prices without notice. All square footages are approximate. Window location, porches, ceiling heights and room dimensions vary per elevation. The availability of certain options is subject to construction status and schedule. Optional features may be predetermined and included at additional cost on select homes. Renderings are artist's conception only.
Rev. 05/21



Amesbury

Two-story • 1,732 Finished Sq. Ft • 2,674 Total Sq. Ft. • 3-5 Bedrooms • 2.5-3.5 Baths • Open Great Room • Opt. Covered Patio • Opt. Bonus Room • Opt. Loft & Bedroom 4 • 2 Car Garage



Woodside Homes reserves the right to change elevations, specifications, materials and prices without notice. All square footages are approximate. Window location, porches, ceiling heights and room dimensions vary per elevation. The availability of certain options is subject to construction status and schedule. Optional features may be predetermined and included at additional cost on select homes. Renderings are artist's conception only.
Rev. 05/21



Amesbury Bonus Room

Two-story • 2,022 Finished Sq. Ft. • 2,964 Total Sq. Ft. • 3-5 Bedrooms • 2.5-3.5 Baths
Open Great Room • Opt. Covered Patio • Opt. Loft & Bedroom 4 • 2 Car Garage



Traditional (A)



Farmhouse (B)

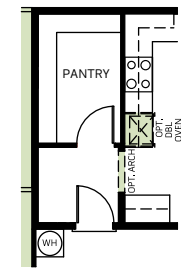
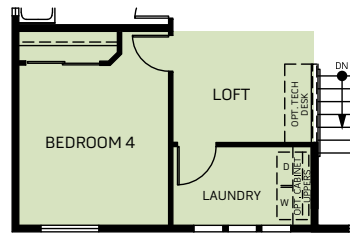
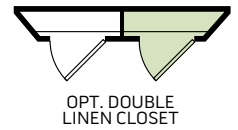
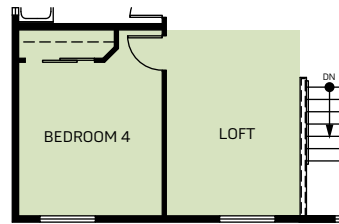
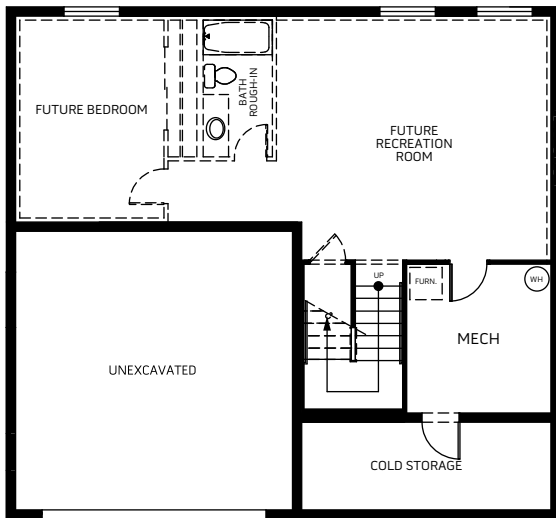
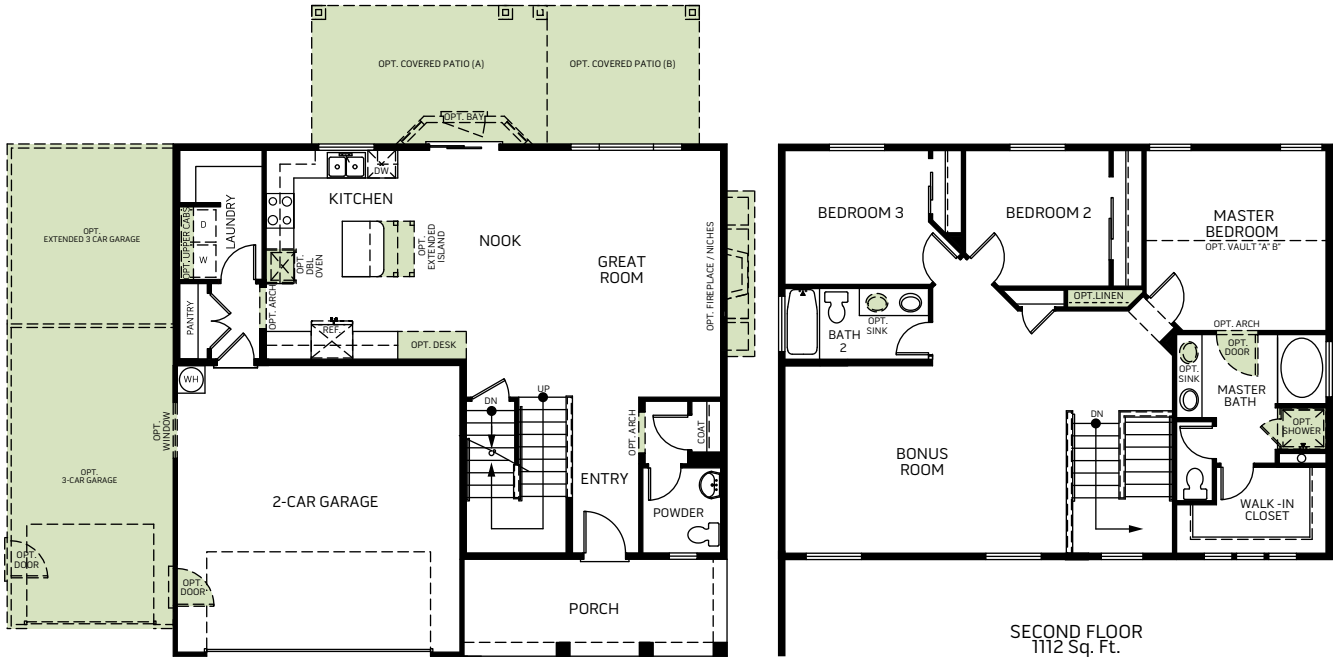


Prairie (D)

Woodside Homes reserves the right to change elevations, specifications, materials and prices without notice. All square footages are approximate. Window location, porches, ceiling heights and room dimensions vary per elevation. The availability of certain options is subject to construction status and schedule. Optional features may be predetermined and included at additional cost on select homes. Renderings are artist's conception only.
Rev. 05/21

Amesbury Bonus Room

Two-story • 2,022 Finished Sq. Ft. • 2,964 Total Sq. Ft. • 3-5 Bedrooms • 2.5-3.5 Baths
Open Great Room • Opt. Covered Patio • Opt. Loft & Bedroom 4 • 2 Car Garage



Woodside Homes reserves the right to change elevations, specifications, materials and prices without notice. All square footages are approximate. Window location, porches, ceiling heights and room dimensions vary per elevation. The availability of certain options is subject to construction status and schedule. Optional features may be predetermined and included at additional cost on select homes. Renderings are artist's conception only.
Rev. 05/21

